



# DAILY INFORMATION BULLETIN

ISSUED BY GOVERNMENT INFORMATION SERVICES  
BEACONSFIELD HOUSE, HONG KONG. TEL.: 842 8777

FRIDAY, JANUARY 21, 1994

<u>CONTENTS</u>	<u>PAGE NO.</u>
FURTHER FUNDING FOR PROVISIONAL AIRPORT AUTHORITY APPROVED ..	1
FC'S DECISION ON AIRPORT FUNDING WELCOMED .....	3
CONSUMER PRICE INDICES FOR DECEMBER .....	3
RECOMMENDATIONS ON WITNESS PROTECTION TO BE IMPLEMENTED .....	9
BANK NOTE TRANSACTIONS BETWEEN LICENSED BANKS .....	10
GOVT PROPOSES TO SET UP SEWAGE SERVICE TRADING FUND .....	11
LEGAL AMENDMENTS TO EFFECT CONTINUED CEMETERY MANAGEMENT .....	12
EXPATRIATE OFFICERS ASSOCIATION URGED TO STAY COOL .....	13
BILL TO BETTER REGULATE COMPANIES IN THE PIPELINE .....	14
AUSTRALIA POST ISSUES LUNAR NEW YEAR STAMPS .....	15
REVISION TO COMPOSITE INDUSTRIAL-OFFICE BUILDING GUIDELINES ANNOUNCED .....	16
FEEs FOR DANGEROUS GOODS SERVICES REVISED .....	17
IMPROVEMENT WORKS FOR LUNG CHEUNG AND CHING CHEUNG ROADS .....	18
COMPANY GETS FUND FOR RESEARCH .....	19
REVISION OF FEES .....	20
DREDGING WORKS OFF TAI TAM BAY .....	20
WATER SUPPLIES DEPARTMENT CUSTOMER LIAISON GROUP MEETS .....	21

/ADULT EDUCATION .....



DAILY INFORMATION BULLETIN

<u>CONTENTS</u>	<u>PAGE NO.</u>
ADULT EDUCATION COURSE FEES REVISED .....	22
AIRMAIL SERVICES TO AFGHANISTAN SUSPENDED .....	22
FOOTBRIDGES FOR YUEN LONG AND SHEUNG SHUI PROPOSED .....	22
EMPLOYMENT SERVICE OFFICE ON MOVE .....	24
EXTENSION OF KAU SAI PIER PROPOSED .....	24
POSSESSING ENDANGERED PLANTS DEFIES LAW .....	25
LUNAR NEW YEAR LIGHTING IN SHA TIN .....	25
TENDERS INVITED FOR CONSTRUCTION OF SITE OFFICES .....	26
CLOSURE OF SHAM SHUI PO ILLEGAL STRUCTURES .....	27
BLANKETS TO STREET-SLEEPERS .....	27
HONG KONG GOVERNMENT EXCHANGE FUND MONEY MARKET OPERATIONS ..	28

## FURTHER FUNDING FOR PROVISIONAL AIRPORT AUTHORITY APPROVED

\* \* \* \* \*

THE FINANCIAL SECRETARY, SIR HAMISH MACLEOD, THIS (FRIDAY) EVENING WELCOMED THE STRONG SUPPORT SHOWN BY MEMBERS OF THE FINANCE COMMITTEE FOR THE AIRPORT PROJECT WHEN, BY 38 VOTES TO TWO, THEY APPROVED \$1.7 BILLION OF FURTHER FUNDING FOR THE PROVISIONAL AIRPORT AUTHORITY (PAA).

DURING THE MEETING, IN ANSWER TO QUESTIONS FROM MEMBERS OF THE FINANCE COMMITTEE, SIR HAMISH SAID:

"BACK IN MARCH AND APRIL 1992, WE PUT FORWARD PLANS FOR EQUITY IN THE TWO CORPORATIONS. WE PROPOSED \$20.3 BILLION INITIAL EQUITY AND UP TO \$21 BILLION OF CALLABLE EQUITY TO MEET ANY DOWNSIDE RISKS THAT MIGHT COME UP.

"UNFORTUNATELY, WE WERE UNABLE TO SECURE AN AGREEMENT ON THAT BASIS. THERE THEN FOLLOWED, IN SEPTEMBER 1992, A WELL-PUBLICISED SUGGESTION BY A CHINESE OFFICIAL THAT WE SHOULD USE THE PREMIUM REVENUE FROM THE AIRPORT RAILWAY LAND GRANTS TO FUND THE AIRPORT AND AIRPORT RAILWAY CONSTRUCTION.

"BUILDING ON THAT IDEA, WE FORMULATED A SECOND FINANCIAL PROPOSAL THAT MAINTAINED THE \$20.3 BILLION PAID-UP EQUITY IN OUR FIRST PROPOSAL, BUT DROPPED THE CALLABLE EQUITY ELEMENT.

"WE PROPOSED THAT ALL OF THE REVENUE FROM THE AIRPORT RAILWAY LAND GRANTS - SOME \$40 BILLION TO BE RECEIVED BETWEEN 1992 AND THE COMPLETION OF THE RAILWAY - SHOULD ALSO BE PUT IN ADDITION AS EQUITY INTO THE TWO CORPORATIONS. IN OTHER WORDS, THAT WOULD HAVE INVOLVED BOTH THE HONG KONG GOVERNMENT SHARE AND THE LAND FUND'S SHARE OF THE PREMIA IN EQUAL SHARES - THAT IS \$20 BILLION FROM EACH.

"OUR AGREEMENT TO PUT IN OUR SHARE OF THE LAND REVENUE WAS ON THE UNDERSTANDING THAT OUR NORMAL LAND SALES REVENUE OVER THE PERIOD WAS NOT TO BE REDUCED BY CUTTING THE ANNUAL LAND DISPOSAL PROGRAMMES AGREED EACH YEAR IN THE SINO-BRITISH LAND COMMISSION. SO, THIS AMOUNTED TO \$20.3 BILLION FROM OUR RESERVES, AND ABOUT \$40 BILLION FROM ADDITIONAL RAILWAY LAND REVENUE.

"UNFORTUNATELY, THIS PROPOSAL WAS NOT ABLE TO SECURE US AN AGREEMENT, EITHER. THERE WAS A RELUCTANCE TO SEE THE LAND FUND SHARE OF THE LAND PREMIA USED FOR THIS PURPOSE.

"MOVING TO THE MOST RECENT PROPOSAL, IN THE SUMMER OF LAST YEAR, WE DECIDED THAT IT WOULD BE APPROPRIATE TO MAKE A FURTHER EFFORT TO BREAK THE LOG-JAM IN OUR DISCUSSIONS.

"AT THE END OF JUNE WE TOLD THE CHINESE SIDE THAT WE WOULD BE PREPARED TO INJECT THE HONG KONG GOVERNMENT SHARE OF LAND PREMIUM REVENUE FROM THE RAILWAY LAND INTO THE TWO CORPORATIONS, NAMELY ABOUT \$20 BILLION. THAT WAS SUBJECT TO THE CHINESE SIDE CONFIRMING OUR UNDERSTANDING THAT OUR FORECAST LAND SALES REVENUE WOULD NOT BE REDUCED BY A SIMILAR AMOUNT BECAUSE OF HAVING FUTURE LAND DISPOSAL PROGRAMMES LIMITED BY THE LAND COMMISSION. WE OFFERED A FURTHER SUBSTANTIAL AMOUNT FROM OUR RESERVES TO SUPPLEMENT THE \$20.3 BILLION EQUITY WE HAD ORIGINALLY PROPOSED.

"DURING THE MANY MONTHS THAT HAVE ELAPSED SINCE OUR LAST PROPOSAL AT THE END OF JUNE LAST YEAR, WE HAVE HELD INFORMAL EXPERT-LEVEL DISCUSSION WITH THE CHINESE SIDE, AND AN AIRPORT COMMITTEE IN AUGUST. HOWEVER, A FULL AGREEMENT STILL ELUDES US. IT HAS NOT PROVED POSSIBLE IN RECENT MONTHS TO HOLD FORMAL TALKS ON THE LAND ASPECTS.

"IN ORDER TO TAKE STOCK OF THE SITUATION, AND TO SEE WHAT FURTHER PROGRESS COULD BE MADE, WE FORMALLY ASKED THE CHINESE SIDE ON MONDAY TO AGREE TO ANOTHER FULL MEETING OF THE AIRPORT COMMITTEE IN THE NEAR FUTURE."

IN ANSWER TO A QUESTION ABOUT WHETHER THE GOVERNMENT HAD ALSO PUT UP A FURTHER \$5 BILLION, SIR HAMISH ALSO SAID: "SINCE YOU ASK THAT QUESTION, I CAN CONFIRM THAT THE ADDITIONAL AMOUNT WAS \$5 BILLION FROM THE RESERVES, SO THAT IS \$20.3 BILLION PLUS \$5 BILLION FROM THE RESERVES AND THEN THE \$20 BILLION FROM OUR SHARE OF THE LAND PREMIUM OF THE AIRPORT RAILWAY. THAT'S OUR LATEST PROPOSAL."

ASKED ABOUT SUGGESTIONS BY THE CHINESE SIDE THAT THE GOVERNMENT HAD BREACHED THE MEMORANDUM OF UNDERSTANDING (MOU), SIR HAMISH SAID: "WE HAVE OPERATED CONSISTENTLY WITHIN THE MOU. THE FINANCIAL PROPOSALS WE HAVE MADE ARE CONSISTENT WITH THE MOU. OUR REPEATED ATTEMPTS TO DISCUSS ISSUES WITH THE CHINESE SIDE ARE CONSISTENT WITH THE MOU, AND SO ARE OUR CONTINUING EFFORTS TO COMPLETE AS MUCH OF THE AIRPORT CORE PROGRAMME AS POSSIBLE BY MID-1997."

A GOVERNMENT SPOKESMAN SAID: "TO SUMMARISE WHAT THE FINANCIAL SECRETARY SAID IN ANSWERS TO QUESTIONS FROM FINANCE COMMITTEE MEMBERS TODAY, THE FINANCING PROPOSALS MADE BY THE HONG KONG GOVERNMENT CONSIST OF:

\* THE GOVERNMENT'S ORIGINAL FINANCING PLAN, IN EARLY 1992, INVOLVED THE INJECTION OF \$3.7 BILLION (MONEY OF THE DAY) PAID-UP EQUITY INTO THE MTRC AND \$16.6 BILLION INTO THE PAA - MAKING A TOTAL OF \$20.3 BILLION - PLUS A TOTAL OF \$21 BILLION CALLABLE EQUITY.

\* IN SEPTEMBER 1992, THE HONG KONG GOVERNMENT RESPONDED TO AN IDEA FROM THE CHINESE SIDE AND PROPOSED THAT ALL THE \$40 BILLION OF LAND PREMIA TO BE PAID BY THE MTRC BEFORE COMPLETION OF THE RAILWAY SHOULD BE USED AS ADDITIONAL PAID-UP EQUITY IN THE TWO CORPORATIONS.

\* THAT WOULD INVOLVE USING BOTH THE HONG KONG GOVERNMENT'S AND THE SPECIAL ADMINISTRATIVE REGION GOVERNMENT (SARG) LAND FUND'S SHARES OF THE PREMIA IN EQUAL \$20 BILLION SHARES - ON THE UNDERSTANDING THAT THE LAND INVOLVED WOULD BE ADDITIONAL TO HONG KONG'S NORMAL LAND DISPOSAL PROGRAMME. THE TOTAL PAID-UP EQUITY IN THE TWO CORPORATIONS WOULD THEN BE \$60.3 BILLION. THE PREVIOUS \$21 BILLION CALLABLE EQUITY PROPOSALS WERE CANCELLED.

\* LAST SUMMER THE GOVERNMENT OFFERED TO PUT IN ITS \$20 BILLION SHARE OF THE LAND SALE PREMIA, WITHOUT THE SARG LAND FUND'S \$20 BILLION SHARE BEING USED. THAT REMAINED CONDITIONAL ON THIS BEING ADDITIONAL TO HONG KONG'S NORMAL LAND DISPOSAL PROGRAMME. IT ALSO OFFERED A FURTHER \$5 BILLION, BRINGING THE TOTAL PAID-UP EQUITY IN THE TWO CORPORATIONS TO \$45.3 BILLION.

## FC'S DECISION ON AIRPORT FUNDING WELCOMED

\* \* \* \* \*

THE DEPUTY TO THE GOVERNOR, MRS ANSON CHAN, THIS EVENING SAID SHE WAS VERY PLEASED THAT THE FINANCE COMMITTEE HAD AGREED AT ITS MEETING TODAY TO PROVIDE MORE FUNDS FOR THE NEW AIRPORT PROJECT.

SPEAKING TO REPORTERS AFTER ATTENDING THE DUTCH BUSINESS ASSOCIATION NEW YEAR'S RECEPTION, MRS CHAN NOTED THAT THE FINANCE COMMITTEE HAD VOTED FOR THE FUNDING IN ABSOLUTE MAJORITY SO AS TO ENABLE THE PROVISIONAL AIRPORT AUTHORITY TO CONTINUE WORKS OF THE AIRPORT PROJECT.

ASKED WHETHER THE NEW FUNDING WOULD MAKE FUTURE AIRPORT TALKS MORE DIFFICULT, MRS CHAN SAID THE BRITISH SIDE HAD ALL ALONG HOPED TO CONTINUE TO DISCUSS WITH THE CHINESE SIDE FINANCIAL ARRANGEMENTS FOR THE NEW AIRPORT THROUGH THE AIRPORT COMMITTEE.

"WE HAVE RECENTLY PROPOSED TO THE CHINESE SIDE THAT THE AIRPORT COMMITTEE SHOULD MEET AS SOON AS POSSIBLE. WE HOPE THAT THROUGH THE COMMITTEE, BOTH SIDES CAN SIT DOWN AND DISCUSS IN WHAT WAY AN AGREEMENT ON THE FINANCIAL ARRANGEMENTS CAN BE REACHED,

"UNTIL AN AGREEMENT CAN BE REACHED, THE BRITISH SIDE WILL ACT FULLY IN ACCORDANCE WITH THE MEMORANDUM OF UNDERSTANDING, THAT IS TO COMPLETE THE NEW AIRPORT AS FAR AS POSSIBLE BEFORE 1997," SHE SAID.

- - - - 0 - - - -

## CONSUMER PRICE INDICES FOR DECEMBER

\* \* \* \* \*

THE CONSUMER PRICE INDEX (A) IN DECEMBER LAST YEAR WAS 8.6% HIGHER THAN IN DECEMBER 1992, ACCORDING TO FIGURES RELEASED TODAY (FRIDAY) BY THE CENSUS AND STATISTICS DEPARTMENT.

THIS WAS SLIGHTLY HIGHER THAN THE CORRESPONDING INCREASE OF 8.4% IN NOVEMBER 1993.

A GOVERNMENT SPOKESMAN NOTED THAT THE HIGHER RATE OF INCREASE IN THE CPI(A) IN DECEMBER WAS MAINLY DUE TO FASTER INCREASES IN FOOD PRICES, PARTICULARLY THOSE OF SALT-WATER FISH AND FRESH FRUIT.

PRICES OF MANY OTHER COMPONENTS, SUCH AS HOUSING AND CLOTHING AND FOOTWEAR, SHOWED A SLOWER INCREASE IN DECEMBER THAN IN NOVEMBER WHEN COMPARED WITH THE SAME MONTH IN 1992.

THE SPOKESMAN FURTHER POINTED OUT THAT, FOR 1993 AS A WHOLE, THE YEAR-ON-YEAR RATE OF INCREASE IN THE CPI(A) AVERAGED AT 8.5%, SAME AS THE NOVEMBER UPDATED FORECAST.

THIS WAS SIGNIFICANTLY LOWER THAN THE AVERAGES OF 12.0% RECORDED IN 1991 AND 9.4% IN 1992.

THE CPI(B) AND THE HANG SENG CPI WERE HIGHER BY 8.5% AND 10.2% RESPECTIVELY IN DECEMBER 1993 THAN IN DECEMBER 1992. THE CORRESPONDING INCREASES IN NOVEMBER 1993 WERE 8.4% AND 9.5%.

THE COMPOSITE CPI, WHICH IS COMPILED BASED ON THE COMBINED EXPENDITURE PATTERN OF HOUSEHOLDS COVERED BY THE THREE CPIS, SHOWED AN INCREASE OF 9% IN DECEMBER 1993 OVER THE SAME MONTH IN 1992.

THIS WAS ALSO HIGHER THAN THE CORRESPONDING INCREASE OF 8.7% IN NOVEMBER 1993.

COMPARING DECEMBER 1993 WITH DECEMBER 1992, RELATIVELY SLOWER INCREASES IN PRICES WERE RECORDED FOR FUEL AND LIGHT (2.8% IN THE CPI(A) AND 2.9% IN THE CPI(B)); DURABLE GOODS (3.4% IN BOTH CPI(A) AND CPI(B)); CLOTHING AND FOOTWEAR (6.5% IN THE CPI(A) AND 6.7% IN THE CPI(B)); AND MISCELLANEOUS GOODS (6.8% AND 6.1%).

ON THE OTHER HAND, RELATIVELY FASTER INCREASES IN PRICES WERE RECORDED FOR TRANSPORT (10.6% IN THE CPI(A) AND 10.1% IN THE CPI(B)); HOUSING (9.9% AND 10.4%); MISCELLANEOUS SERVICES (9.7% AND 9.1%); AND FOOD EXCLUDING MEALS AT RESTAURANTS (9.1% AND 8.7%).

AS FOR MEALS AT RESTAURANTS AND ALCOHOLIC DRINKS AND TOBACCO, THEIR CORRESPONDING INCREASES WERE 8.2% AND 8.9% IN THE CPI(A) AND 8.2% AND 8.3% IN THE CPI(B).

COMPARING DECEMBER 1993 WITH NOVEMBER 1993, THE CPI(A) AND CPI(B) BOTH INCREASED BY 0.7%. HOWEVER, THIS COMPARISON COULD HAVE BEEN AFFECTED BY SEASONAL FACTORS.

FOR THE THREE MONTHS ENDING DECEMBER 1993, THE CPI(A) AND CPI(B) WERE, ON AVERAGE, HIGHER BY 8.7% AND 8.6% RESPECTIVELY THAN IN THE THREE MONTHS ENDING DECEMBER 1992.

FOR 1993 AS A WHOLE, THE CPI(A) AND CPI(B) WERE, ON AVERAGE, HIGHER BY 8.5% AND 8.7% RESPECTIVELY THAN IN 1992.

SEASONALLY ADJUSTED SERIES ARE ALSO AVAILABLE FOR THE CPIS. THE DESEASONALISED CPI(A) AND CPI(B) BOTH INCREASED AT AN AVERAGE RATE OF 0.8% PER MONTH DURING THE THREE MONTHS ENDING DECEMBER 1993.

#### THE CONSUMER PRICE INDEX REPORT

---

MORE DETAILS ARE GIVEN IN THE "CONSUMER PRICE INDEX REPORT" FOR DECEMBER 1993, WHICH IS AVAILABLE AT \$12 A COPY FROM:

- \* THE GOVERNMENT PUBLICATIONS CENTRE, GROUND FLOOR, GENERAL POST OFFICE BUILDING, CONNAUGHT PLACE, HONG KONG; OR
- \* THE PUBLICATIONS SECTION OF THE CENSUS AND STATISTICS DEPARTMENT, 19TH FLOOR, WAN CHAI TOWER, 12 HARBOUR ROAD, WAN CHAI, HONG KONG.

FOR LOCAL AND OVERSEAS MAILINGS, CONTACT SHOULD BE MADE WITH THE INFORMATION SERVICES DEPARTMENT, FRENCH MISSION BUILDING, 1 BATTERY PATH, HONG KONG.

FOR ENQUIRIES ABOUT THE INDICES, PLEASE TELEPHONE THE CONSUMER PRICE INDEX SECTION OF THE CENSUS AND STATISTICS DEPARTMENT ON 805 6403.

DETAILS REGARDING THE HANG SENG CPI ARE CONTAINED IN THE HANG SENG CPI REPORT ISSUED BY THE ECONOMIC RESEARCH DEPARTMENT OF HANG SENG BANK LTD.

Table 1 Consumer Price Indices and Rates of Increase for December 1993  
(Oct. 89 - Sep. 90 = 100)

Component	CPI(A)		CPI(B)		Hang Seng CPI		Composite CPI	
	Index for Dec. 93	% change over Dec. 92	Index for Dec. 93	% change over Dec. 92	Index for Dec. 93	% change over Dec. 92	Index for Dec. 93	% change over Dec. 92
Food	135.7	+8.6	137.3	+8.4	138.9	+9.7	136.9	+8.7
Meals bought away from home	144.0	+8.2	144.0	+8.2	144.6	+10.5	144.1	+8.7
Food, excluding meals bought away from home	127.4	+9.1	128.1	+8.7	129.2	+8.0	128.0	+8.8
Housing	155.3	+9.9	156.5	+10.4	159.3	+13.4	157.0	+11.2
Fuel and light	121.4	+2.8	120.7	+2.9	120.8	+3.1	121.0	+2.9
Alcoholic drinks and tobacco	181.5	+8.9	170.8	+8.3	166.2	+8.2	175.6	+8.6
Clothing and footwear	133.3	+6.5	134.7	+6.7	147.1	+12.7	138.6	+8.7
Durable goods	111.4	+3.4	111.1	+3.4	116.9	+3.8	112.9	+3.6
Miscellaneous goods	128.1	+6.8	125.1	+6.1	123.5	+5.8	125.8	+6.3
Transport	140.4	+10.6	139.8	+10.1	139.2	+8.4	139.9	+9.8
Miscellaneous services	149.8	+9.7	145.4	+9.1	138.1	+8.2	144.6	+9.0
All items	140.4	+8.6	140.9	+8.5	143.3	+10.2	141.3	+9.0

The 1989/90-based consumer price indices are based on the expenditure patterns derived from the 1989/90 Household Expenditure Survey. The CPI(A) is based on the expenditure pattern of about 50% of urban households in Hong Kong, which had an average monthly expenditure of \$2,500-\$9,999 in 1989/90. The CPI(B) is based on the expenditure pattern of the next 30% of urban households, which had an average monthly expenditure of \$10,000-\$17,499 in the same period. The Hang Seng CPI is based on the expenditure pattern of the next 10% of urban households, which had an average monthly expenditure of \$17,500-\$37,499 in 1989/90.

Whereas the CPI(A), CPI(B) and Hang Seng CPI are based on the expenditure patterns of groups of households with different magnitudes of household expenditure, the Composite CPI is compiled based on the expenditure pattern of all these households taken together. Thus, while the CPI(A), CPI(B) and Hang Seng CPI show the impact of consumer price changes on different groups of households, the Composite CPI shows the impact of consumer price changes on the household sector generally.

Table 2 Consumer Price Indices for January 1991 - December 1993  
(Oct. 89 - Sep. 90 = 100)

<u>Year/month</u>	<u>CPI(A)</u>	<u>CPI(B)</u>	<u>Hang Seng CPI</u>	<u>Composite CPI</u>
1991 January	108.3	108.4	108.6	108.4
February	110.3	110.1	110.2	110.2
March	111.9	111.1	110.7	111.3
April	113.9	113.0	112.0	113.1
May	114.0	113.6	113.4	113.7
June	114.6	114.1	113.9	114.2
July	115.4	114.8	113.9	114.8
August	116.0	115.3	114.6	115.4
September	116.8	116.1	115.8	116.3
October	117.2	116.8	117.4	117.1
November	117.7	117.6	118.7	117.9
December	118.1	118.3	118.5	118.3
1992 January	119.7	119.3	119.4	119.5
February	121.8	121.2	121.0	121.4
March	122.5	121.9	121.8	122.1
April	124.0	123.4	122.9	123.5
May	124.0	123.8	124.2	124.0
June	125.3	125.1	125.2	125.2
July	125.5	125.4	125.4	125.4
August	125.6	125.9	125.8	125.8
September	128.3	127.9	127.5	128.0
October	128.4	128.4	128.6	128.5
November	128.5	129.0	129.9	129.0
December	129.3	129.8	130.0	129.7
1993 January	131.8	131.6	131.5	131.7
February	132.4	132.2	132.0	132.2
March	132.0	132.2	133.1	132.4
April	133.5	133.9	134.5	133.9
May	134.5	134.8	136.3	135.1
June	136.0	135.9	137.1	136.3
July	135.8	136.1	136.9	136.2
August	136.3	136.6	137.4	136.7
September	138.4	138.3	139.2	138.6
October	140.0	139.6	140.7	140.0
November	139.4	139.9	142.2	140.3
December	140.4	140.9	143.3	141.3

Chart 1 Year-on-year Rates of Increase  
in CPI(A)

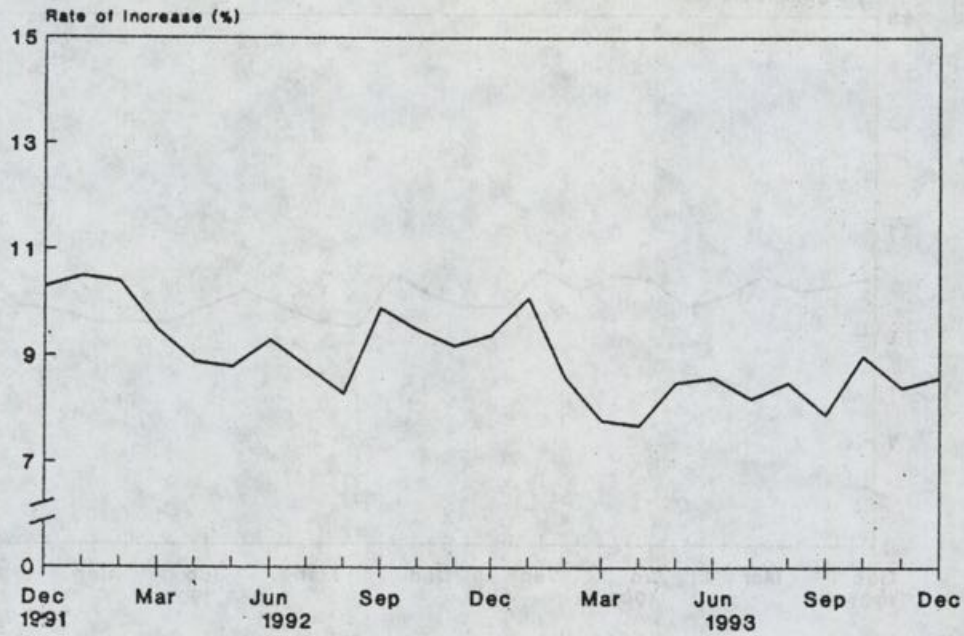
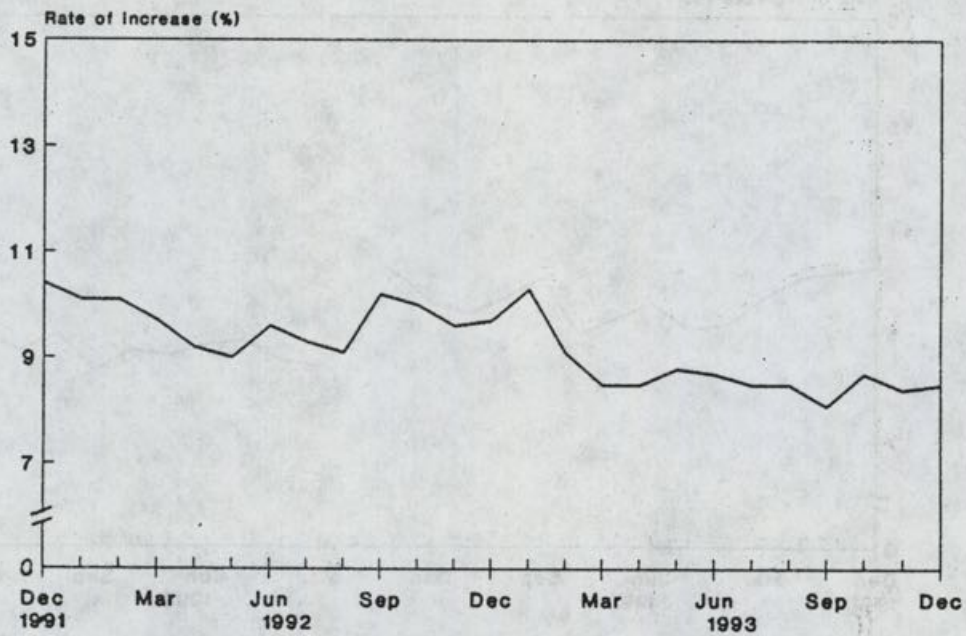


Chart 2 Year-on-year Rates of Increase  
in CPI(B)



/Chart 3 .....

Chart 3 Year-on-year Rates of Increase in Hang Seng CPI

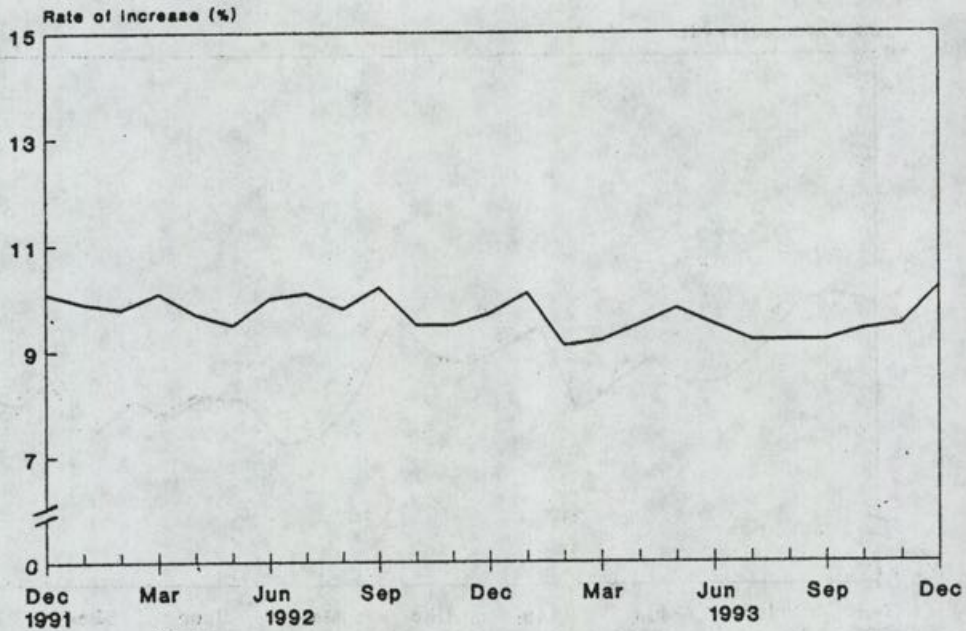
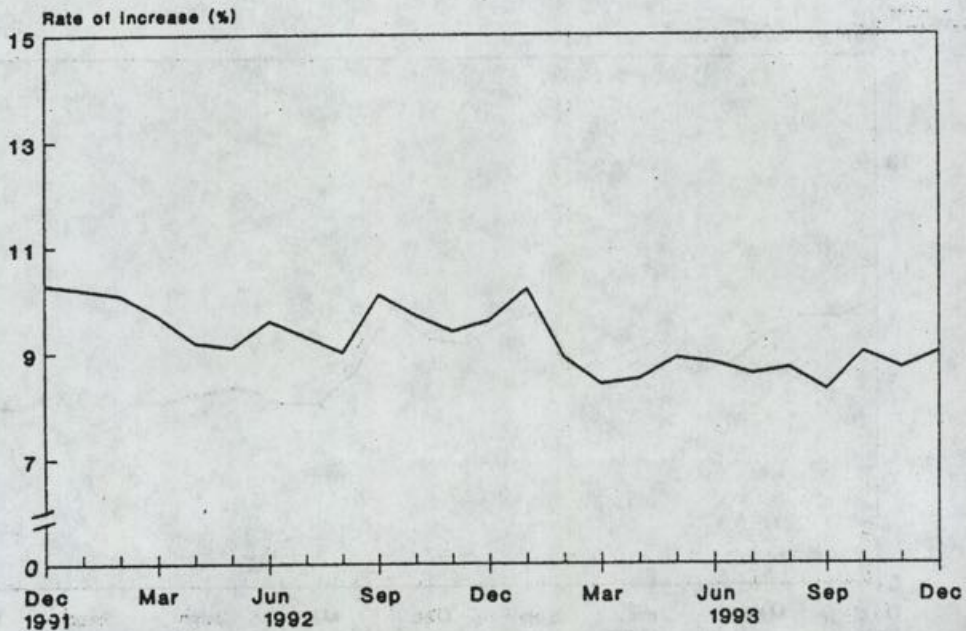


Chart 4 Year-on-year Rates of Increase in Composite CPI



RECOMMENDATIONS ON WITNESS PROTECTION TO BE IMPLEMENTED

\* \* \* \* \*

THE GOVERNMENT WILL IMPLEMENT A NUMBER OF RECOMMENDATIONS ON WITNESS PROTECTION MADE BY THE COMMISSION OF INQUIRY INTO WITNESS PROTECTION AND THE FIGHT CRIME COMMITTEE.

THE COMMISSION WAS APPOINTED BY THE GOVERNOR IN COUNCIL IN JANUARY LAST YEAR TO EXAMINE EXISTING WITNESS PROTECTION ARRANGEMENTS, FOLLOWING THE COLLAPSE OF A MURDER TRIAL IN OCTOBER 1992 BECAUSE A KEY VIETNAMESE PROSECUTION WITNESS DECLINED TO GIVE EVIDENCE.

THE FIGHT CRIME COMMITTEE SET UP AN AD HOC COMMITTEE TO EXAMINE THIS ISSUE IN LATE 1992.

A GOVERNMENT SPOKESMAN SAID TODAY (FRIDAY) A CENTRAL WITNESS PROTECTION UNIT WOULD BE ESTABLISHED WITHIN THE POLICE HEADQUARTERS AS PROPOSED BY THE FIGHT CRIME COMMITTEE.

"IT WOULD NOT BE COST-EFFECTIVE FOR OTHER LAW ENFORCEMENT AGENCIES, SUCH AS THE CUSTOMS AND EXCISE AND IMMIGRATION DEPARTMENTS, TO SET UP THEIR OWN CENTRAL PROTECTION UNITS AT THE SAME TIME, BECAUSE OF THEIR INFREQUENT NEED FOR WITNESS PROTECTION," THE SPOKESMAN SAID.

"HOWEVER, WHEN THEY REQUIRE WITNESS PROTECTION, WE RECOMMEND THAT THEY APPROACH THE POLICE FOR ADVICE AND ASSISTANCE TO ENSURE THAT ANY ARRANGEMENTS THEY ADOPT ARE SIMILAR TO THOSE ADOPTED BY THE POLICE," HE SAID.

OTHER RECOMMENDATIONS ADOPTED BY THE GOVERNMENT INCLUDE:

- (A) THE ESTABLISHMENT OF A WITNESS PROTECTION PROGRAMME TO PROVIDE PROTECTION TO HIGH RISK WITNESSES;
- (B) THE PROVISION OF SUFFICIENT FUNDING FOR EACH WITNESS PROTECTION PROGRAMME;
- (C) THE PROVISION FOR CHANGING THE IDENTITY OF WITNESSES;
- (D) THE ESTABLISHMENT OF LINKS WITH OTHER AGENCIES OUTSIDE HONG KONG TO DEAL WITH THE RELOCATION OF WITNESSES OVERSEAS;
- (E) THE ESTABLISHMENT OF PRACTICAL METHODS TO PROTECT A WITNESS WHEN GIVING EVIDENCE IN COURT;
- (F) MAKING ARRANGEMENTS TO ENSURE THAT A WITNESS IS NOT INTERFERED WITH PRIOR TO GIVING EVIDENCE;
- (G) IMPROVEMENTS TO THE EXISTING WITNESS ASSURANCE AND ASSISTANCE ARRANGEMENTS;
- (H) THE PROVISION OF OUT-OF-POCKET EXPENSES INCURRED BY WITNESSES;
- (I) SHORTENING THE TIME BETWEEN PLEA AND EVENTUAL TRIAL FOR NOT GUILTY PLEAS;

(J) A REVIEW OF THE STANDARD OF ACCOMMODATION FOR WITNESSES IN ALL CRIMINAL COURTS;

(K) THE PROVISION OF SEPARATE ACCOMMODATION FOR WITNESSES IN CUSTODY; AND

(L) LAUNCHING AN EFFECTIVE PUBLICITY STRATEGY AND EDUCATION PROGRAMME TO INFORM THE PUBLIC OF THE WITNESS PROTECTION PROGRAMME AND THE ASSURANCE AND ASSISTANCE ARRANGEMENTS.

RECOMMENDATIONS (F), (G), (K) AND (L) ABOVE WILL BE CARRIED OUT IMMEDIATELY; OTHERS HAVE RESOURCE IMPLICATIONS OR REQUIRE LEGISLATION, AND WILL BE EXAMINED WITH A VIEW TO IMPLEMENTATION AS SOON AS PRACTICABLE.

THE SPOKESMAN SAID IT WOULD NOT BE APPROPRIATE TO SET UP A CENTRALISED WITNESS PROTECTION AUTHORITY WITHIN THE SECURITY BRANCH, AS RECOMMENDED BY THE COMMISSION OF INQUIRY.

"THE SECURITY BRANCH CANNOT, AND SHOULD NOT, BE THE OPERATIONAL AUTHORITY FOR WITNESS PROTECTION ARRANGEMENTS AS THESE ARE MORE PROPERLY THE RESPONSIBILITIES OF THE INVESTIGATING AGENCIES AND THE PROSECUTING AUTHORITY.

"IT WOULD BE EXPENSIVE AND TIME-CONSUMING TO ADD YET ANOTHER LAYER ON TOP OF OPERATIONAL WITNESS PROTECTION ARRANGEMENTS IN THE VARIOUS DEPARTMENTS.

"ADDITIONAL RESOURCES WOULD HAVE TO BE FOUND FOR SETTING UP THE AUTHORITY IN THE SECURITY BRANCH, YET THERE WOULD BE NO CORRESPONDING SAVINGS FROM DEPARTMENTS."

WITNESS PROTECTION MEASURES IN OTHER JURISDICTIONS, FOR EXAMPLE, AUSTRALIA AND CANADA, REST WITH THE POLICE, HE EXPLAINED.

- - - - 0 - - - -

#### BANK NOTE TRANSACTIONS BETWEEN LICENSED BANKS

\* \* \* \* \*

THE THREE NOTE-ISSUING BANKS, THE HONG KONG AND SHANGHAI BANKING CORPORATION LIMITED, STANDARD CHARTERED BANK AND BANK OF CHINA, TODAY (FRIDAY) ANNOUNCED THAT:

FOLLOWING CONSULTATION WITH THE HONG KONG MONETARY AUTHORITY (HKMA), ALL BANK NOTE TRANSACTIONS BETWEEN THEMSELVES AND WITH OTHER LICENSED BANKS WOULD, WITH EFFECT FROM MONDAY (JANUARY 24), BE FOR HONG KONG DOLLAR VALUE.

AS FROM THE SAME DATE, THE NOTE-ISSUING BANKS WOULD STOP CHARGING HANDLING FEES FOR THE DEPOSIT OF LARGE AMOUNTS OF BANK NOTES BY CUSTOMERS.

THE THREE NOTE-ISSUING BANKS WILL INFORM THE COMMITTEE OF THE HONG KONG ASSOCIATION OF BANKS OF THEIR DECISION TODAY.

THEY EXPECTED THAT OTHER LICENSED BANKS WOULD SIMILARLY STOP CHARGING BANK NOTE HANDLING FEES.

CHIEF EXECUTIVE OF HKMA, MR JOSEPH YAM, WELCOMED THE DECISION BY THE THREE NOTE-ISSUING BANKS.

"I AM PLEASED THAT THE PROBLEM OF BANK NOTE HANDLING CHARGES HAS BEEN RESOLVED SATISFACTORILY," HE SAID.

"THE HKMA HAS STUDIED THE NEW ARRANGEMENT CAREFULLY AND IS SATISFIED THAT IT WOULD NOT ADVERSELY AFFECT EXCHANGE RATE STABILITY.

"HONG KONG DOLLAR BANK NOTES WILL CONTINUE TO BE 100 PER CENT BACKED BY U.S. DOLLARS AT THE FIXED RATE OF 7.80. NOTE-ISSUING BANKS WILL CONTINUE TO PLACE U.S. DOLLARS WITH THE EXCHANGE FUND IN ORDER TO ACQUIRE THE CERTIFICATES OF INDEBTEDNESS NECESSARY FOR BACKING THE BANK NOTES THAT THEY ISSUE," HE ADDED.

THE FINANCIAL SECRETARY, SIR HAMISH MACLEOD, ALSO WELCOMED THE NOTE-ISSUING BANKS' DECISION TO INTRODUCE THE NEW ARRANGEMENT AND ABOLISH BANK NOTE HANDLING CHARGES.

"THIS IS GOOD NEWS FOR BANK CUSTOMERS. I AM GRATEFUL TO THE THREE BANKS IN QUESTION FOR CO-OPERATING TOGETHER, AND WITH THE MONETARY AUTHORITY, TO PRODUCE THIS POSITIVE RESULT," SIR HAMISH SAID.

- - - - 0 - - - -

GOVT PROPOSES TO SET UP SEWAGE SERVICE TRADING FUND

\* \* \* \* \*

THE GOVERNMENT PROPOSES TO SET UP A SEWAGE SERVICES TRADING FUND IN THE DRAINAGE SERVICES DEPARTMENT BY MARCH 1 SO THAT AN EARLY START COULD BE MADE ON THE SEWERAGE PROJECTS OF THE HIGH PRIORITY PROGRAMME THAT WILL REDUCE POLLUTION IN THE HARBOUR BY ABOUT 70 PER CENT.

THIS WAS STATED BY THE SECRETARY FOR WORKS, MR JAMES BLAKE, WHEN HE BRIEFED MEMBERS OF THE LEGISLATIVE COUNCIL'S ENVIRONMENTAL AFFAIRS PANEL AND THE FINANCE, TAXATION AND MONETARY AFFAIRS PANEL AT A MEETING TODAY (FRIDAY).

MR BLAKE SAID THE MAIN FUNCTIONS OF THE TRADING FUND WERE TO HOLD AND MANAGE THE GOVERNMENT'S CAPITAL INJECTION FOR FUNDING THE PLANNING, DESIGN AND CONSTRUCTION OF THE HIGH PRIORITY PROGRAMME DUE FOR COMPLETION BY 1997 AND TO HANDLE BILLING AND COLLECTION OF CHARGES UPON THE INTRODUCTION OF A SEWAGE CHARGING SCHEME.

HE MADE IT CATEGORICALLY CLEAR THAT THE COSTS FOR PROVIDING EXISTING STORMWATER DRAINAGE, FLOOD PREVENTION AND RIVER CONTROL SERVICES WOULD CONTINUE TO BE FUNDED DIRECTLY BY THE GOVERNMENT.

THEY WOULD BE SEPARATE FROM THE COSTS OF SEWAGE SERVICES PROVIDED BY THE TRADING FUND.

/MR BLAKE .....

MR BLAKE ALSO SAID A SUBMISSION WOULD BE MADE TO THE FINANCE COMMITTEE OF THE LEGISLATIVE COUNCIL TO ALLOCATE INITIALLY \$6.8 BILLION AS GOVERNMENT CAPITAL INJECTION INTO THE TRADING FUND.

THE GOVERNMENT AIMED TO START AWARDING CONTRACTS FOR THE HIGH PRIORITY PROGRAMME IN MARCH.

THE GOVERNMENT WILL FUND THE \$12 BILLION CAPITAL PROGRAMME IN FULL, WHICH WILL INCLUDE \$8 BILLION FOR THE HIGH PRIORITY PROGRAMME AND \$4 BILLION FOR OTHER SEWERAGE PROJECTS.

THE TRADING FUND WILL ESTABLISHED BY RESOLUTION OF THE LEGISLATIVE COUNCIL UNDER THE TRADING FUNDS ORDINANCE.

- - - - 0 - - - -

LEGAL AMENDMENTS TO EFFECT CONTINUED CEMETERY MANAGEMENT  
\* \* \* \* \*

THE GOVERNMENT PROPOSES LEGAL AMENDMENTS TO ENABLE THE COMMONWEALTH WAR GRAVES COMMISSION (CWGC) TO CONTINUE ITS INDEPENDENT OPERATION AND MANAGEMENT OF ITS CEMETERIES IN HONG KONG.

THE PROPOSAL, CONTAINED IN THE PUBLIC HEALTH AND MUNICIPAL SERVICES (AMENDMENT) BILL 1994, WAS GAZETTED TODAY (FRIDAY).

A GOVERNMENT SPOKESMAN SAID: "THE CWGC, AN INTER-GOVERNMENTAL ORGANISATION FOUNDED IN 1917 BY THE ROYAL CHARTER, IS RESPONSIBLE FOR THE MANAGEMENT AND CARE OF GRAVES AND MEMORIALS OF THOSE WHO DIED WHILE SERVING IN COMMONWEALTH FORCES IN THE TWO WORLD WARS."

IT MAINTAINS INDEPENDENTLY IN HONG KONG TWO WAR CEMETERIES - THE SAI WAN WAR CEMETERY AND THE STANLEY MILITARY CEMETERY.

SIMILAR TO ALL OTHER LOCAL CEMETERIES, WHETHER PUBLIC OR PRIVATE, THESE TWO CWGC CEMETERIES ARE REGULATED AND CONTROLLED UNDER THE PUBLIC HEALTH AND MUNICIPAL SERVICES ORDINANCE AND ITS SUBSIDIARY LEGISLATION.

THE SPOKESMAN SAID: "IN THIS LEGISLATION, LITTLE DISTINCTION IS MADE BETWEEN THE POWERS OF THE AUTHORITIES IN RESPECT OF PUBLIC CEMETERIES AND THOSE OF THE CWGC IN RESPECT OF THE CWGC CEMETERIES.

"HOWEVER, IN PRACTICE, THERE HAS NEVER BEEN ANY INTERFERENCE WITH THE CWGC'S INDEPENDENT OPERATION AND MANAGEMENT OF THE CEMETERIES IN QUESTION."

THEREFORE, IT IS CONSIDERED APPROPRIATE TO AMEND THE LEGISLATION TO REFLECT AS FAR AS POSSIBLE THE EXISTING LONG-STANDING PRACTICE OF MANAGEMENT AND CONTROL OF THESE WAR GRAVES, HE ADDED.

THE PROPOSED BILL WILL BE INTRODUCED INTO THE LEGISLATIVE COUNCIL ON FEBRUARY 2.

- - - - 0 - - - -

FRIDAY, JANUARY 21, 1994

- 13 -

EXPATRIATE OFFICERS ASSOCIATION URGED TO STAY COOL

\* \* \* \* \*

A GOVERNMENT SPOKESMAN TODAY (FRIDAY) URGED THE ASSOCIATION OF EXPATRIATE CIVIL SERVANTS (AECS) TO PROCEED CAUTIOUSLY AND NOT TO RUSH INTO LEGAL ACTION OVER TRANSFERS OF OVERSEAS OFFICERS TO LOCAL CONDITIONS.

"TO DO SO WOULD ONLY RAISE THE TEMPERATURE AND COMPLICATE MATTERS FURTHER," HE SAID. "BUT, IF THEY DO GO AHEAD, WE BELIEVE WE HAVE A DEFENSIBLE POSITION AND WE WILL ACT ACCORDINGLY."

THE SPOKESMAN WAS COMMENTING ON THE ASSOCIATION'S LATEST MOVE IN ITS LEGAL ACTION AGAINST THE GOVERNMENT'S LOCALISATION POLICY.

HE SAID THE AECS APPEARED TO BE DRAWING SOME VERY SWEEPING CONCLUSIONS ON THE BASIS OF A RELATIVELY SMALL NUMBER OF CASES WHICH HAD BEEN PROCESSED SO FAR.

"WE DO NOT ACCEPT THAT THE CHANGE OF POLICY INTRODUCED LAST JULY IS A 'SHAM'," THE SPOKESMAN SAID.

"WE ARE COMMITTED TO THE NEW INTERIM POLICY AND SINCERELY BELIEVE THAT IT IS CORRECT.

"JUDGING BY THE REACTIONS IN OTHER QUARTERS, IT IS SELF-EVIDENT THAT LOCAL STAFF ASSOCIATIONS AND MANY MEMBERS OF THE LEGISLATIVE COUNCIL ALSO DO NOT REGARD IT AS A 'SHAM'."

THE SPOKESMAN BELIEVED THERE WAS NOTHING REALLY NEW IN THE AECS'S LATEST ANNOUNCEMENT AND THAT THEY SHOULD WAIT AND SEE HOW THE NEW POLICY DEVELOPED.

THE GOVERNMENT'S APPROACH ALL ALONG HAS BEEN TO TRY TO BE FAIR AND TO ACT ACCORDING TO THE LAW.

"WE WILL CONTINUE DOWN THIS TRACK. BUT IF THE AECS HAS PARTICULAR PROBLEMS, WE WOULD BE PREPARED TO DISCUSS WITH THEM IN A REASONABLE WAY.

"THIS IS A SENSITIVE AND COMPLEX ISSUE AND ALL SIDES SHOULD EXERCISE RESTRAINT.

"A MORE POSITIVE WAY FORWARD IS FOR ALL PARTIES CONCERNED TO SIT DOWN AND DISCUSS A MUTUALLY ACCEPTABLE SOLUTION FOR BOTH THE SHORT-TERM MEASURE AND ALSO THE LONGER TERM ARRANGEMENTS FOR A COMMON SET OF TERMS AND CONDITIONS OF SERVICE FOR LOCAL AND OVERSEAS STAFF," THE SPOKESMAN STRESSED.

AS AT JANUARY 17, THE TOTAL NUMBER OF APPLICATIONS RECEIVED FROM OVERSEAS OFFICERS FOR EMPLOYMENT ON LOCAL CONDITIONS WAS 108.

OF THESE, FOUR HAVE SO FAR BEEN ACCEPTED, OR IN THE PROCESS OF BEING ACCEPTED; 16 HAVE BEEN REJECTED (INCLUDING THREE ON GROUNDS OF INELIGIBILITY FOR PERMANENT RESIDENT STATUS); AND TWO HAVE BEEN WITHDRAWN.

- - - - - 0 - - - - -

/14 .....

BILL TO BETTER REGULATE COMPANIES IN THE PIPELINE

\* \* \* \* \*

WORK ON A BILL TO BETTER REGULATE COMPANIES IS NOW PROCEEDING WITH A VIEW TO BRINGING IT FORWARD DURING THE CURRENT SESSION OF THE LEGISLATIVE COUNCIL, THE SECRETARY FOR FINANCIAL SERVICES, MR MICHAEL CARTLAND, SAID THIS (FRIDAY) EVENING.

MR CARTLAND WAS ADDRESSING THE ANNUAL DINNER OF THE INSTITUTE OF CHARTERED SECRETARIES AND ADMINISTRATORS IN HONG KONG.

HE SAID THE BILL, WHICH AIMED AT EXTENDING IMMUNITY AGAINST ANY BREACH OF CONFIDENTIALITY TO AUDITORS OF LISTED AND RELATED COMPANIES WHO REPORTED SUSPECTED FRAUD OR OTHER IRREGULARITIES TO THE APPROPRIATE REGULATOR, WAS MENTIONED BY THE GOVERNOR IN HIS POLICY ADDRESS LAST OCTOBER.

"THE PROPOSED LEGISLATION IS SIMILAR TO THAT ALREADY IN PLACE IN RESPECT OF AUDITORS OF FINANCIAL INSTITUTIONS," HE SAID.

MR CARTLAND NOTED, HOWEVER, THAT THE PUSH FOR BETTER CORPORATE DISCIPLINE COULD NOT AND SHOULD NOT STOP AT LISTED COMPANIES.

"I HOPE AND BELIEVE THAT SOME OF THE LESSONS OF SOUND CORPORATE MANAGEMENT APPLICABLE TO LISTED COMPANIES WILL FILTER DOWN THROUGH THE BUSINESS COMMUNITY AT LARGE," HE SAID.

HE ADDED THAT THE GOVERNMENT WAS GIVING SERIOUS THOUGHT TO THE SUGGESTION THAT IMMUNITY TO AUDITORS OF LISTED COMPANIES AGAINST POTENTIAL BREACHES OF CLIENT CONFIDENTIALITY SHOULD BE EXTENDED TO AUDITORS OF ALL COMPANIES.

ON DIRECTORS' DUTIES AND RESPONSIBILITIES, MR CARTLAND SAID THE GOVERNMENT SUPPORTED WHOLEHEARTEDLY AN INITIATIVE BY THE LOCAL BRANCH OF THE INSTITUTE OF DIRECTORS TO DRAW UP A SET OF GUIDELINES FOR DIRECTORS.

"I BELIEVE THAT THERE IS A GENUINE LACK OF KNOWLEDGE AND AWARENESS ON THE PART OF MANY COMPANY DIRECTORS AND A CODE OF CONDUCT CAN OFFER SOME GUIDANCE," HE SAID.

MR CARTLAND SAID THE GOVERNMENT LOOKED FOR SUPPORT OF PROFESSIONAL ASSOCIATIONS TO LEAD BY EXAMPLE AND TO IMPROVE STANDARDS OF ADMINISTRATION AND ETHICAL PRACTICE WITHIN COMPANIES OF ALL KINDS.

"WE ARE HAPPY TO WORK CLOSELY WITH ORGANISATIONS WILLING TO EMBRACE THIS ROLE AND THEREBY TO HELP HONG KONG RETAIN ITS POSITION IN THE INTERNATIONAL COMMUNITY IN THE YEARS AHEAD," HE SAID.

FRIDAY, JANUARY 21, 1994

- 15 -

AUSTRALIA POST ISSUES LUNAR NEW YEAR STAMPS

\* \* \* \* \*

THE YEAR OF THE DOG MINIATURE SHEET AND FIRST DAY COVER TO BE ISSUED BY AUSTRALIA POST FOR CHRISTMAS ISLAND TO CELEBRATE THE LUNAR NEW YEAR WILL BE PLACED ON SALE AT THE FOLLOWING POST OFFICES NEXT FRIDAY (JANUARY 28):

GENERAL POST OFFICE

TSIM SHA TSUI POST OFFICE

BEACONSFIELD HOUSE POST OFFICE

GRANVILLE ROAD POST OFFICE

SHA TIN CENTRAL POST OFFICE

PEAK POST OFFICE

THE POSTMASTER GENERAL, MR MIKE PAGLIARI, SAID THE MINIATURE SHEET FEATURED A COLOUR ILLUSTRATION OF A TRADITIONAL LION DANCE AND CONTAINED TWO STAMPS SHOWING DIFFERENT DOGS.

THE FIRST DAY COVER SERVICED WITH A MINIATURE SHEET WILL CARRY AN AUSTRALIAN POSTMARK OF JANUARY 20, 1994, BEING THE FIRST DAY OF ISSUE OF THE STAMPS.

"AUSTRALIA POST HAS STATED ITS INTENTION TO ISSUE A FULL CYCLE OF LUNAR NEW YEAR STAMPS COMMENCING WITH THE YEAR OF THE DOG," HE SAID.

CHRISTMAS ISLAND IS LOCATED IN THE INDIAN OCEAN. ABOUT HALF OF ITS POPULATION IS OF CHINESE DESCENT AND THE LUNAR NEW YEAR IS A MAJOR CELEBRATION ON THE ISLAND.

"ITS ISSUE OF LUNAR NEW YEAR STAMPS NOT ONLY COMPLEMENTS THE POPULAR CHINESE FESTIVAL BUT ALSO ENRICHES THE THEMATIC COLLECTION OF LUNAR NEW YEAR STAMPS," MR PAGLIARI SAID.

THE MINIATURE SHEET AND SERVICED COVER ARE AVAILABLE AT \$5 AND \$6 RESPECTIVELY.

----- 0 -----

/16 .....

FRIDAY, JANUARY 21, 1994

- 16 -

REVISION TO COMPOSITE INDUSTRIAL-OFFICE  
BUILDING GUIDELINES ANNOUNCED

\* \* \* \* \*

THE TOWN PLANNING BOARD ANNOUNCED TODAY (FRIDAY) REVISION TO THE GUIDELINES FOR APPLICATION FOR COMPOSITE INDUSTRIAL-OFFICE (I-O) BUILDING IN "INDUSTRIAL" ZONE.

COMPOSITE I-O BUILDINGS ARE DUAL PURPOSE BUILDINGS IN WHICH EVERY UNIT CAN BE USED FLEXIBLY FOR BOTH INDUSTRIAL AND OFFICE PURPOSES.

PREVIOUSLY THE TYPE OF OFFICES TO BE ACCOMMODATED IN AN I-O BUILDING SHOULD BE ANCILLARY TO THE INDUSTRIAL/GODOWN ACTIVITIES WITHIN THE SAME INDUSTRIAL AREA.

"FROM NOW ON, THE TYPE OF OFFICES ESTABLISHED WITHIN I-O BUILDINGS HAVE TO BE ANCILLARY AND DIRECTLY RELATED TO INDUSTRIAL OPERATIONS, BUT THERE IS NO REQUIREMENT THAT SUCH INDUSTRIAL OPERATIONS HAVE TO BE WITHIN THE SAME INDUSTRIAL AREA," A SPOKESMAN OF THE BOARD SAID.

THE REVISION HAS TAKEN INTO ACCOUNT THE STRUCTURAL CHANGE OF HONG KONG'S INDUSTRY AND CATERS FOR THE NEED OF THE INDUSTRIAL SECTOR.

IT IS RECOGNISED THAT INDUSTRIALISTS HAVE BEEN MOVING THEIR PRODUCTION LINES TO CHINA AND OTHER SOUTHEAST ASIAN COUNTRIES LEAVING THE ADMINISTRATION, MARKETING, RESEARCH AND DEVELOPMENT, DESIGN, QUALITY CONTROL AND PACKAGING OF THEIR INDUSTRIAL OPERATIONS IN HONG KONG.

BY REVISING THE GUIDELINES, THE BOARD AIMS TO PROVIDE SUITABLE ACCOMMODATION FOR THOSE INDUSTRIES WITH SUCH OFFICE FUNCTIONS REMAINING IN HONG KONG.

UNDER THE I-O CONCEPT, AN ANCILLARY OFFICE IS A "SATELLITE OFFICE" SUPPORTING AN INDUSTRIAL OPERATION ELSEWHERE.

OFFICES WHICH ARE NOT WITHIN THE SCOPE OF THIS DEFINITION, FOR EXAMPLE, LEGAL FIRMS, TRAVEL AGENTS, PROPERTY AGENTS, ACCOUNTING AND ARCHITECTURAL FIRMS, WILL NOT BE ALLOWED TO ESTABLISH AN OFFICE IN I-O BUILDINGS, UNLESS WITH PLANNING PERMISSION.

THE GUIDELINES FOR I-O BUILDINGS WERE FIRST PROMULGATED IN EARLY 1990 AND WERE LAST REVISED IN OCTOBER 1993.

COPIES OF THE REVISED GUIDELINES ARE AVAILABLE FREE OF CHARGE AT THE PLANNING DEPARTMENT, 16TH FLOOR, MURRAY BUILDING, GARDEN ROAD, HONG KONG.

- - - - 0 - - - -

/17 .....

FRIDAY, JANUARY 21, 1994

- 17 -

FEEES FOR DANGEROUS GOODS SERVICES REVISED

\* \* \* \* \*

FEEES FOR GOVERNMENT SERVICES RELATING TO MINING AND THE MANUFACTURE, STORAGE, CONVEYANCE AND USAGE OF EXPLOSIVES HAVE BEEN REVISED FROM TODAY (FRIDAY).

THE FEEES ARE SET OUT IN FOUR REGULATIONS - THE DANGEROUS GOODS (GENERAL) (AMENDMENT) REGULATION 1994, MINING (GENERAL) (AMENDMENT) REGULATION 1994, MINES (SAFETY) (AMENDMENT) REGULATION 1994, AND DANGEROUS GOODS (GOVERNMENT EXPLOSIVES DEPOTS) (AMENDMENT) REGULATION 1994.

A SPOKESMAN FOR THE CIVIL ENGINEERING DEPARTMENT, WHICH ENFORCES THE REGULATIONS, SAID THE OLD FEEES HAD BEEN REVISED TO BRING THEM IN LINE WITH THE RISING ADMINISTRATIVE AND OPERATING COSTS IN THE PAST YEARS.

HE POINTED OUT THAT THE FEEES CHARGED FOR THE REGULATION OF BLASTING AND EXPLOSIVES WERE LAST REVIEWED IN 1990, BUT THE REVISION ONLY TOOK PLACE IN OCTOBER 1992 OWING TO THE MORATORIUM IN 1991.

THE NEW FEEES ARE EXPECTED TO HAVE ONLY MINIMAL EFFECT ON THE CONSTRUCTION INDUSTRY AS THEY FORM ONLY A VERY SMALL PORTION OF ITS TOTAL COST.

THE OLD AND NEW FEEES FOR SOME OF THE SERVICES SET OUT IN THE FOUR REGULATIONS ARE:

	OLD	NEW
	---	---
* PERMIT FOR DISCHARGE OF EXPLOSIVES	\$18,830	\$25,025
* DUPLICATE LICENCE	\$190	\$209
* CERTIFICATE OF MINE BLASTING	\$645	\$857
* STORAGE OF EXPLOSIVES PER 50 KILOGRAMS	\$126.5	\$168
* DELIVERY OF EXPLOSIVES NOT EXCEEDING 50 KILOGRAMS (INCLUDING REMOVAL PERMIT)	\$1,685	\$2,240

THE DANGEROUS GOODS STANDING COMMITTEE, WHICH HAS REPRESENTATIVES FROM THE PRIVATE SECTOR INCLUDING THOSE FROM THE CHEMICAL, SHIPPING, PETROLEUM AND GODOWN INDUSTRIES, HAD BEEN CONSULTED ON THE REVISION.

- - - - 0 - - - -

FRIDAY, JANUARY 21, 1994

- 18 -

IMPROVEMENT WORKS FOR LUNG CHEUNG AND CHING CHEUNG ROADS

\* \* \* \* \*

THE GOVERNOR IN COUNCIL HAS AUTHORISED IMPROVEMENT WORKS FOR THE EXISTING LUNG CHEUNG ROAD AND CHING CHEUNG ROAD.

THE OBJECTIVES OF THE WORKS ARE TO IMPROVE VEHICULAR TRAFFIC CONDITIONS AND TO INCREASE THE TRAFFIC CAPACITY ALONG LUNG CHEUNG ROAD AND CHING CHEUNG ROAD WHICH FORM ONE OF THE MOST IMPORTANT EAST AND WEST LINKS ALONG THE KOWLOON PENINSULAR.

ABOUT FIVE KILOMETRES OF ROAD STRETCHING FROM BUTTERFLY VALLEY IN THE WEST TO LION ROCK TUNNEL IN THE EAST ARE TO BE WIDENED FROM DUAL TWO-LANE TO DUAL THREE-LANE.

FROM TAI PO ROAD INTERCHANGE TO BEACON HEIGHTS, WHERE WIDENING IS NOT ACHIEVED BECAUSE OF SITE CONSTRAINTS, A ONE-KILOMETRE LONG ELEVATED ROAD OFF LUNG CHEUNG ROAD MAINLINE WILL BE BUILT.

THE ENTIRE PROJECT IS EXPECTED TO START IN MID-1994 AND WILL BE COMPLETED BY MID-1997.

A NOTICE ABOUT THE PROPOSED WORKS IS GAZETTED TODAY (FRIDAY).

PLANS SHOWING THE ROAD WORK PROJECT CAN BE SEEN AT:

- \* THE CENTRAL AND WESTERN DISTRICT OFFICE, PUBLIC ENQUIRY SERVICE CENTRE, GROUND FLOOR, HARBOUR BUILDING, 38 PIER ROAD, CENTRAL, HONG KONG;
- \* THE DISTRICT LANDS OFFICE/KOWLOON WEST AND THE DISTRICT LANDS OFFICE/KOWLOON EAST, BOTH AT YAU MA TEI CAR PARK BUILDING, 10TH FLOOR, 250 SHANGHAI STREET, KOWLOON;
- \* THE DISTRICT LANDS OFFICE/KWAI TSING, 10TH FLOOR, TSUEN WAN STATION MULTI-STOREY CARPARK BUILDING, 174-208 CASTLE PEAK ROAD, TSUEN WAN, NEW TERRITORIES;
- \* THE SHAM SHUI PO DISTRICT OFFICE, SIXTH FLOOR, 290 UN CHAU STREET, SHAM SHUI PO, KOWLOON;
- \* THE KOWLOON CITY DISTRICT OFFICE, 141-143 KAU PUI LUNG ROAD, FIRST FLOOR, KOWLOON AND THE KWAI TSING DISTRICT OFFICE, 10TH FLOOR, KWAI HING GOVERNMENT OFFICES BUILDING, 166-174 HING FONG ROAD, KWAI CHUNG, NEW TERRITORIES.

- - - - - 0 - - - - -

/19 .....

COMPANY GETS FUND FOR RESEARCH

\* \* \* \* \*

ANOTHER LOCAL COMPANY HAS BEEN GIVEN FUNDING SUPPORT FOR ITS RESEARCH AND DEVELOPMENT (R AND D) PROJECT UNDER THE GOVERNMENT'S APPLIED R AND D SCHEME, THE DIRECTOR-GENERAL OF INDUSTRY, MISS DENISE YUE, SAID TODAY (FRIDAY).

NOTING THAT THIS WAS THE SECOND CONTRACT SIGNED SINCE THE \$200 MILLION SCHEME WAS LAUNCHED IN FEBRUARY LAST YEAR, MISS YUE SAID GOOD PROGRESS HAD BEEN MADE IN VETTING APPLICATIONS FOR THE SCHEME.

"AT PRESENT TWO MORE PROJECTS WERE IN THE PIPELINE AND WE HOPE TO BE ABLE TO CONCLUDE AN AGREEMENT WITH THE APPLICANT COMPANIES SOON," SHE SAID.

UNDER THE SECOND AGREEMENT SIGNED, THE COMPANY WILL RECEIVE A LOAN PAYMENT OF \$909,500 AT PRIME INTEREST RATE FOR THE DEVELOPMENT OF AN ENVIRONMENTAL-FRIENDLY AND DEGRADABLE PACKING MATERIAL (CL-P).

IF THE PROJECT COULD BE SUCCESSFULLY CARRIED OUT, THE PRODUCT MIGHT BE A GOOD SUBSTITUTE TO POLYFOAM WHICH WOULD BE BANNED FROM BEING MANUFACTURED, IMPORTED OR USED BY MANY EUROPEAN COUNTRIES AND JAPAN BY 1995, MISS YUE NOTED.

SHE SAID THE COMPANY HAD ALSO SOLICITED THE SUPPORT OF THE BIOTECHNOLOGY RESEARCH INSTITUTE OF THE HONG KONG UNIVERSITY OF SCIENCE AND TECHNOLOGY (HKUST) IN CARRYING OUT PART OF THE RESEARCH WORK.

"A MEMBER OF THE COMPANY'S PROJECT TEAM IN CHINA WILL BE SECONDED TO HONG KONG TO UNDERTAKE RESEARCH JOINTLY WITH THE RESEARCHERS AT THE HKUST.

"SUCH AN ARRANGEMENT WILL NOT ONLY ENHANCE THE TECHNOLOGICAL CAPABILITY OF THE COMPANY, BUT WILL ALSO PROVIDE A GOOD OPPORTUNITY FOR TECHNOLOGY EXCHANGES BETWEEN HONG KONG'S ACADEMIC INSTITUTION AND CHINA'S RESEARCH EXPERT, AND HENCE FURTHER BOOST THE R AND D CLIMATE IN HONG KONG," MISS YUE SAID.

SHE SAID THAT UP TO NOW, A TOTAL OF 20 APPLICATIONS FOR FUNDING SUPPORT HAD BEEN RECEIVED UNDER THE APPLIED R AND D SCHEME, SET UP BY THE GOVERNMENT WITH AN AIM TO INCREASE THE APPLIED R AND D ACTIVITY IN HONG KONG.

APART FROM THE FOUR WHICH HAVE BEEN APPROVED, 10 ARE BEING PROCESSED, FOUR WERE REJECTED, ONE HAD WITHDRAWN AND ONE WERE INELIGIBLE.

MISS YUE SAID INDIVIDUALS OR COMPANIES FROM ALL INDUSTRIAL SECTORS WITH BRIGHT IDEAS FOR APPLIED R AND D SHOULD LOSE NO TIME AND SUBMIT THEIR APPLICATIONS IF THEY WOULD LIKE TO SECURE AN ADDITIONAL SOURCE OF FINANCING FOR THEIR PROJECTS.

IN ASSESSING THE APPLICATIONS, THE PROJECT'S VIABILITY, TECHNICAL FEASIBILITY AND COMMERCIAL POTENTIAL WERE THE MAIN FACTORS OF CONSIDERATION, SHE ADDED.

FRIDAY, JANUARY 21, 1994

- 20 -

APPLICATION FORMS FOR THE SCHEME CAN BE OBTAINED FROM THE HONG KONG APPLIED R AND D FUND COMPANY LIMITED AT ROOM 1445, 14TH FLOOR, OCEAN CENTRE, 5 CANTON ROAD, KOWLOON.

COMPLETED FORMS CAN BE RETURNED BY POST OR BY HAND TO THE COMPANY. ENQUIRIES CAN BE MADE ON TEL 737 2206.

- - - - 0 - - - -

#### REVISION OF FEES

\* \* \* \* \*

THE FEES CHARGED FOR THE ISSUE OF DUPLICATE BUSINESS REGISTRATION CERTIFICATES AND DUPLICATE BRANCH REGISTRATION CERTIFICATES WILL BE REVISED FROM MARCH 1.

THE BUSINESS REGISTRATION (AMENDMENT) REGULATION 1994, WHICH GIVES EFFECT TO THE REVISION, WAS GAZETTED TODAY (FRIDAY).

THE FEE FOR THE ISSUE OF A DUPLICATE BUSINESS REGISTRATION CERTIFICATE OR A DUPLICATE BRANCH REGISTRATION CERTIFICATE WAS LAST REVISED IN 1992.

TAKING ACCOUNT OF THE INCREASE IN THE COSTS OF PROVIDING THE SERVICE SINCE THE LAST REVIEW, THE FEE WILL BE REVISED FROM \$30 TO \$33, A GOVERNMENT SPOKESMAN SAID.

THE SPOKESMAN EXPLAINED THAT THE FEE REVISION WAS A ROUTINE ADJUSTMENT AIMED AT RECOVERING THE INCREASED ADMINISTRATIVE COSTS INCURRED.

- - - - 0 - - - -

#### DREDGING WORKS OFF TAI TAM BAY

\* \* \* \* \*

DREDGING OF 6.3 HECTARES OF FORESHORE AND SEABED TO FORM A CHANNEL FROM THE SHORELINE OF SHEK O QUARRY TO TAI TAM BAY HAS BEEN AUTHORISED BY THE GOVERNOR IN COUNCIL.

THE CHANNEL WILL PROVIDE A TEMPORARY MOORING FOR IMMersed TUBE UNITS TO BE USED IN THE WESTERN HARBOUR CROSSING.

THE EXTENT OF THE AREA AFFECTED IS DESCRIBED IN A GAZETTE NOTICE PUBLISHED TODAY (FRIDAY).

/THE NOTICE, .....

THE NOTICE, TOGETHER WITH ITS RELATED PLAN, CAN BE SEEN AT THE LANDS DEPARTMENT SURVEY AND MAPPING OFFICE, 14TH FLOOR, MURRAY BUILDING, GARDEN ROAD, AND THE SOUTHERN DISTRICT OFFICE, SHOP 25, GROUND FLOOR, MEI FUNG COURT, ABERDEEN CENTRE, 7-11 NAM NING STREET, HONG KONG.

ANY PERSON WHO CONSIDERS THAT HIS INTEREST, RIGHT OR EASEMENT IN OR OVER THE FORESHORE AND SEABED INVOLVED WILL BE AFFECTED BY THE PROPOSED UNDERTAKING MAY SUBMIT HIS CLAIM FOR COMPENSATION TO THE DIRECTOR OF LANDS BY JANUARY 21 NEXT YEAR.

- - - - 0 - - - -

#### WATER SUPPLIES DEPARTMENT CUSTOMER LIAISON GROUP MEETS

\* \* \* \* \*

THE CUSTOMER LIAISON GROUP OF THE WATER SUPPLIES DEPARTMENT HELD ITS THIRD MEETING THIS (FRIDAY) EVENING.

THE GROUP WAS FORMED IN JULY LAST YEAR TO PROMOTE BETTER UNDERSTANDING BETWEEN THE WATER SUPPLIES DEPARTMENT AND ITS CUSTOMERS AS PART OF THE DEPARTMENT'S EFFORT TO FURTHER IMPROVE ITS SERVICES.

THE MEETING WAS CHAIRED BY ACTING DEPUTY DIRECTOR OF WATER SUPPLIES, MR KO CHAN-GOCK, AND WAS ALSO ATTENDED BY THREE ASSISTANT DIRECTORS, THE BUSINESS MANAGER AND OTHER STAFF OF THE DEPARTMENT.

DURING THE MEETING, MEMBERS WERE BRIEFED ON THE SERVICES PROVIDED BY THE DEPARTMENT'S CUSTOMER ENQUIRY CENTRES AND TELEPHONE ENQUIRY UNIT AND ON THE PERFORMANCE PLEDGE SCHEME LAUNCHED BY THE DEPARTMENT IN MARCH LAST YEAR.

MEMBERS WERE ALSO INFORMED THAT A NEW AUTOMATED 24-HOUR TELEPHONE ENQUIRY SYSTEM WOULD SOON BE INTRODUCED BY THE DEPARTMENT.

FOLLOWING THAT, A NUMBER OF CONSTRUCTIVE SUGGESTIONS AND COMMENTS ON THESE TOPICS AND OTHER SERVICES PROVIDED BY THE DEPARTMENT WERE RAISED BY THE MEMBERS FOR DISCUSSION.

THE MEETING WAS FOLLOWED BY A DINNER HOSTED BY THE CHAIRMAN.

- - - - 0 - - - -

ADULT EDUCATION COURSE FEES REVISED

\* \* \* \* \*

TUITION FEES FOR ADULT EDUCATION COURSES HAVE BEEN REVISED AND GAZETTED, A GOVERNMENT SPOKESMAN ANNOUNCED TODAY (FRIDAY).

BUT CONTINUING TO BE OFFERED FREE OF CHARGE ARE THE SECONDARY 1-3 GOVERNMENT EVENING AND GENERAL BACKGROUND ADULT EDUCATION COURSES, THE SPOKESMAN SAID.

THE REVISION INCLUDES SECONDARY 4-5 GOVERNMENT EVENING COURSES. THE FEES WILL BE REVISED TO \$93 A MONTH FOR THE 10-MONTH 1994/95 SCHOOL YEAR.

REVISIONS HAVE BEEN MADE TO THE FEES FOR THE PRIMARY, SECONDARY AND GCE 'O' LEVEL ENGLISH COURSES, WHICH WILL RANGE FROM TWO INSTALMENTS OF \$410 TO \$675 EACH.

FEES FOR HOBBY GROUP SHORT COURSES, WHICH PROVIDE PERSONAL ENJOYMENT BUT LEAD TO NO FORMAL QUALIFICATIONS, HAVE BEEN REVISED TO \$470 PER COURSE.

"DESPITE THE REVISION, THE FEES ARE STILL REASONABLE. NO STUDENTS WILL BE PAYING MORE THAN A FAIR SHARE OF THE COST OF PROVIDING THE COURSE," THE SPOKESMAN SAID.

- - - - 0 - - - -

AIRMAIL SERVICES TO AFGHANISTAN SUSPENDED

\* \* \* \* \*

THE POSTMASTER GENERAL, MR MIKE PAGLIARI, ANNOUNCED TODAY (FRIDAY) THAT OWING TO THE CLOSURE OF KABUL AIRPORT, AFGHANISTAN, ALL AIRMAIL SERVICES TO AFGHANISTAN, INCLUDING AIR LETTER AND AIR PARCEL, ARE TEMPORARILY SUSPENDED WITH IMMEDIATE EFFECT.

A FURTHER ANNOUNCEMENT WILL BE MADE AS AND WHEN SERVICES RESUME.

- - - - 0 - - - -

FOOTBRIDGES FOR YUEN LONG AND SHEUNG SHUI PROPOSED

\* \* \* \* \*

THE TERRITORY DEVELOPMENT DEPARTMENT IS PLANNING TO CONSTRUCT A GRADE-SEPARATED FOOTBRIDGE SYSTEM IN YUEN LONG.

THE SYSTEM WOULD FACILITATE PEDESTRIAN MOVEMENT FROM THE SOUTH-EASTERN PART OF YUEN LONG TOWN TO THE YUEN LONG LIGHT RAIL TRANSIT INTERCHANGE AND BUS TERMINUS.

THE WORKS INVOLVE THE BUILDING OF A 270-METRE-LONG, 3.8-METRE-WIDE FOOTBRIDGE AT THE YUEN LONG LIGHT RAIL TRANSIT INTERCHANGE ACROSS CASTLE PEAK ROAD TOGETHER WITH AN ASSOCIATED RAMP AND ASSOCIATED STAIRCASES.

OTHER WORKS INCLUDE THE CONSTRUCTION OF A 12-METRE-LONG, 3.6-METRE-WIDE FOOTBRIDGE ACROSS THE YUEN LONG EASTERN NULLAH; THE MODIFICATION OF AN EXISTING BICYCLE PARKING AREA, A VAN TRACK, CYCLE TRACKS, FOOTPATHS AND VERGES AFFECTED BY THE PROPOSED WORKS.

THE PLAN AND SCHEME SHOWING THE PROPOSED WORKS CAN BE SEEN DURING OFFICE HOURS AT:

- \* THE PUBLIC ENQUIRIES SERVICE CENTRE OF THE CENTRAL AND WESTERN DISTRICT OFFICE, GROUND FLOOR, HARBOUR BUILDING, 38 PIER ROAD, CENTRAL;
- \* YUEN LONG DISTRICT LANDS OFFICE, NINTH TO 11TH FLOOR, YUEN LONG GOVERNMENT OFFICES, 2 KIU LOK STREET, YUEN LONG, NEW TERRITORIES; AND
- \* YUEN LONG DISTRICT OFFICE, YUEN LONG DISTRICT BRANCH OFFICES BUILDING, 269 CASTLE PEAK ROAD, YUEN LONG, NEW TERRITORIES.

ANY PERSON WISHING TO OBJECT TO THE PROPOSALS SHOULD WRITE TO THE SECRETARY FOR TRANSPORT, CENTRAL GOVERNMENT OFFICES, EAST WING, SECOND FLOOR, LOWER ALBERT ROAD, NO LATER THAN MARCH 22, THIS YEAR DESCRIBING HIS INTEREST AND MANNER IN WHICH HE WILL BE AFFECTED.

MEANWHILE, THE GOVERNOR IN COUNCIL HAS GIVEN AUTHORISATION FOR THE DEPARTMENT TO CONSTRUCT TWO FOOTBRIDGES IN SHEUNG SHUI AREA 7B NEAR SHEK WU HUI AS PART OF THE DEVELOPMENT OF SHEUNG SHUI/FANLING NEW TOWN.

ONE OF THE FOOTBRIDGES WILL BE BUILT ACROSS LUNG SUM AVENUE AND ANOTHER ACROSS SAN WAN ROAD.

THE FOOTBRIDGES WOULD IMPROVE PEDESTRIAN ACCESS TO KOWLOON-CANTON RAILWAY SHEUNG SHUI STATION, SHEK WU HUI, CHOI YUEN ESTATE AND NEW DEVELOPMENTS IN THE SURROUNDING AREA, A DEPARTMENT SPOKESMAN SAID TODAY (FRIDAY).

WORKS WILL BEGIN IN JULY FOR COMPLETION IN 14 MONTHS.

DURING THE CONSTRUCTION PERIOD, THE EXISTING VEHICULAR AND PEDESTRIAN ACCESS ALONG LUNG SUM ROAD AND SAN WAN ROAD WILL BE FULLY MAINTAINED, THE SPOKESMAN ADDED.

NOTICES OF THE PROPOSED FOOTBRIDGE CONSTRUCTION IN YUEN LONG AND SHUENG SHUI/FANLING WERE GAZETTED TODAY (FRIDAY).

EMPLOYMENT SERVICE OFFICE ON MOVE  
\* \* \* \* \*

LABOUR DEPARTMENT'S LOCAL EMPLOYMENT SERVICE (LES) WAN CHAI OFFICE WILL BE REPROVISIONED TO NEW PREMISES IN HARBOUR BUILDING IN CENTRAL TOMORROW (SATURDAY).

THE LES WAN CHAI OFFICE SERVES EMPLOYERS AND JOB-SEEKERS IN CAUSEWAY BAY, WAN CHAI, CENTRAL AND WESTERN DISTRICTS, AS WELL AS THE OUTLYING ISLANDS.

IT IS RESPONSIBLE FOR PROVIDING FREE EMPLOYMENT ASSISTANCE TO JOB-SEEKERS INCLUDING RETRAINEES, AND FREE RECRUITMENT SERVICE TO EMPLOYERS.

EMPLOYERS CAN PLACE THEIR VACANCY ORDERS BY PHONE OR BY FACSIMILE TO THE LES OFFICE WHILE JOB-SEEKERS CAN REGISTER WITH THE OFFICE IN PERSON.

STARTING FROM MONDAY (JANUARY 24), EMPLOYERS WISHING TO PLACE VACANCIES CAN CONTACT THE OFFICE ON TEL 852 4202 OR BY FAX AT 542 4382.

JOB-SEEKERS CAN APPROACH THE NEW OFFICE WHICH IS ON THE FIRST FLOOR, HARBOUR BUILDING, 38 PIER ROAD, CENTRAL.

- - - - 0 - - - -

EXTENSION OF KAU SAI PIER PROPOSED  
\* \* \* \* \*

THE GOVERNMENT PROPOSES EXTENDING THE PIER AT KAU SAI, SAI KUNG, FOR THE CONVENIENCE OF LOCAL RESIDENTS AND TOURISTS.

THE WORK WILL AFFECT ABOUT 336 SQUARE METRES OF FORESHORE AND SEABED. DETAILS WERE GAZETTED TODAY (FRIDAY).

THE NOTICE AND ITS RELATED PLAN CAN BE SEEN ON NOTICE BOARDS POSTED NEAR THE SITE.

THE PLAN CAN ALSO BE SEEN AT THE LANDS DEPARTMENT SURVEY AND MAPPING OFFICE, 14TH FLOOR, MURRAY BUILDING, GARDEN ROAD (WHERE COPIES CAN BE PURCHASED) AND AT THE SAI KUNG DISTRICT OFFICE, SECOND FLOOR, SAI KUNG GOVERNMENT OFFICES, 34 CHAN MAN STREET, SAI KUNG, NEW TERRITORIES.

ANY PERSON WHO CONSIDERS THAT HIS INTEREST, RIGHT OR EASEMENT IN OR OVER THE FORESHORE AND SEABED MAY BE AFFECTED CAN SUBMIT A WRITTEN OBJECTION TO THE DIRECTOR OF LANDS WITHIN TWO MONTHS OF PUBLICATION OF THE GAZETTE NOTICE.

- - - - 0 - - - -

POSSESSING ENDANGERED PLANTS DEFIES LAW

\* \* \* \* \*

IT IS AGAINST THE LAW TO POSSESS ENDANGERED PLANTS WITHOUT THE PRIOR PERMISSION BY THE AGRICULTURE AND FISHERIES DEPARTMENT.

THE REMINDER WAS ISSUED TODAY (FRIDAY) BY SENIOR CONSERVATION OFFICER OF THE DEPARTMENT, MR CHAN JEE-KEUNG, AFTER A LARGE QUANTITY OF SUSPECTED WILD ORCHIDS WERE SEIZED FROM A NURSERY IN YUEN LONG EARLY THIS MONTH.

UNDER THE ANIMALS AND PLANTS (PROTECTION OF ENDANGERED SPECIES) ORDINANCE, IT IS AN OFFENCE TO POSSESS, IMPORT OR EXPORT ANY ENDANGERED SPECIES, WHETHER ANIMALS OR PLANTS, WITHOUT THE PRIOR PERMISSION OF THE DIRECTOR OF AGRICULTURE AND FISHERIES.

"FAILURE TO COMPLY WITH THESE REQUIREMENTS MAY RESULT IN A MAXIMUM FINE OF \$25,000 ON THE FIRST OFFENCE AND \$50,000 PLUS SIX MONTHS' IMPRISONMENT FOR A REPEATED OFFENCE," MR CHAN SAID.

THE ORDINANCE GIVES EFFECT TO THE CONVENTION ON INTERNATIONAL TRADE IN ENDANGERED SPECIES OF WILD FAUNA AND FLORA WHICH IS ALSO KNOWN AS THE WASHINGTON CONVENTION.

AT PRESENT, MORE THAN 8,000 SPECIES OF ANIMALS AND PLANTS, WHETHER ALIVE, DEAD, STUFFED SPECIMEN, PARTS OR DERIVATIVES, ARE LISTED IN THE ORDINANCE.

THE CASE WAS UNCOVERED ON JANUARY 7. ACTING ON INFORMATION, STAFF OF THE DEPARTMENT RAIDED A NURSERY IN YUEN LONG AND SEIZED MORE THAN 6,000 PIECES OF SUSPECTED WILD ORCHIDS IN 74 TRAYS.

THIS IS THE LARGEST SEIZURE EVER MADE IN HONG KONG BY THE DEPARTMENT OF SUSPECTED WILD ORCHIDS, BELIEVED TO HAVE SMUGGLED INTO THE TERRITORY FROM SOUTH-WESTERN CHINA.

- - - - 0 - - - -

LUNAR NEW YEAR LIGHTING IN SHA TIN

\* \* \* \* \*

CHINESE NEW YEAR ILLUMINATIONS WILL BE SWITCHED ON IN SHA TIN THIS SUNDAY (JANUARY 23).

THIS YEAR'S FESTIVE LIGHTING, MADE UP OF 60,000 BULBS, WILL BE ON DISPLAY ALONG SAND MARTIN BRIDGE, LEK YUEN BRIDGE, SHING MUN BRIDGE, TSUI YUNG BRIDGE AND SHA TIN CENTRAL PARK.

THE DISPLAY WILL BE TURNED UP DAILY FROM 6.30 PM TO MIDNIGHT BETWEEN JANUARY 23 AND FEBRUARY 8 AND BETWEEN FEBRUARY 13 AND 23. FROM FEBRUARY 9 TO 12 AND ON FEBRUARY 24, IT WILL BE SWITCHED ON THROUGHOUT THE NIGHT.

FRIDAY, JANUARY 21, 1994

- 26 -

THE FESTIVE LIGHTING DECORATION IS ORGANISED BY THE PLANNING COMMITTEE ON FESTIVE LIGHTING IN SHA TIN AND CO-ORGANISED BY THE SHA TIN DISTRICT OFFICE AND THE REGIONAL SERVICES DEPARTMENT.

IT IS SPONSORED BY THE SHA TIN DISTRICT BOARD, THE REGIONAL COUNCIL AND SUN HUNG KAI PROPERTIES COMPANY.

THE PLANNING COMMITTEE HAS ALSO ORGANISED A PHOTOGRAPH COMPETITION TO CAPTURE THE BEST OF THE ILLUMINATIONS.

THE COMPETITION IS DIVIDED INTO STUDENT AND OPEN DIVISIONS, AND EACH PARTICIPANT CAN SUBMIT A MAXIMUM OF TWO PHOTOGRAPHS.

THE ENTRIES SHOULD BE 5R OR 8R COLOUR PHOTOGRAPH.

ENTRY FORMS ARE NOW AVAILABLE AT SHA TIN DISTRICT OFFICE'S PUBLIC ENQUIRY SERVICES CENTRE ON THE FIRST FLOOR OF KOWLOON-CANTON RAILWAY HOUSE, SHA TIN.

ENQUIRIES CAN BE MADE ON TEL 604 8078 EXT. 33.

- - - - -

ATTENTION NEWS EDITORS:

THE SECRETARY FOR ECONOMIC SERVICES, MR GORDON SIU; THE SHA TIN DISTRICT OFFICER, MR DAVID BROWNING; THE DEPUTY DIRECTOR OF REGIONAL SERVICES DEPARTMENT, MR BENJAMIN TANG; AND THE CHAIRMAN OF SHA TIN DISTRICT BOARD, MR CHOY KAN-PUI, WILL OFFICIATE AT THE SWITCHING-ON CEREMONY OF THE CHINESE LUNAR NEW YEAR FESTIVE LIGHTING AT SHA TIN CENTRAL PARK.

THE CEREMONY INCLUDES DRAGON AND LIONS DANCES AND WILL BEGIN ON SUNDAY AT 5 PM.

YOU ARE INVITED TO COVER THE EVENT.

- - - - 0 - - - -

TENDERS INVITED FOR CONSTRUCTION OF SITE OFFICES  
\* \* \* \* \*

THE DRAINAGE SERVICES DEPARTMENT IS INVITING TENDERS FOR THE CONSTRUCTION, SERVICING AND MAINTENANCE OF TEMPORARY SITE OFFICES OF THE STRATEGIC SEWAGE DISPOSAL SCHEME STAGE 1 (SSDS).

THE SITE OFFICES WILL BE LOCATED ON STONECUTTERS ISLAND, AND AT TSING YI, KWAI CHUNG, TO KWA WAN, KWUN TONG, SHAU KEI WAN, CHAI WAN AND TSEUNG KWAN O.

THE CONTRACT ALSO INCLUDES THE PROVISION OF OTHER SERVICES FOR THE RESIDENT SITE STAFF SUPERVISING THE SCHEME.

/THE STAGE .....

THE STAGE 1 OF THE SSDS IS TO COLLECT AND TREAT SEWAGE FROM KOWLOON BETWEEN TSUEN WAN AND TSEUNG KWAN O AND FROM THE NORTH-EASTERN PART OF HONG KONG ISLAND WITH A VIEW TO IMPROVING THE WATER QUALITY IN VICTORIA HARBOUR.

THE WORKS ARE SCHEDULED TO BEGIN IN APRIL AND THE SITE OFFICES WILL BE PROVIDED WITHIN 18 MONTHS.

A NOTICE OF THE TENDER INVITATION WAS GAZETTED TODAY (FRIDAY).

TENDER FORMS AND FURTHER PARTICULARS MAY BE OBTAINED FROM THE OFFICE OF THE CONSULTING ENGINEERS, MONTGOMERY WATSON HONG KONG LIMITED, 1911 WINDSOR HOUSE, 311 GLOUCESTER ROAD, CAUSEWAY BAY.

THE TENDER CLOSING DATE IS NOON ON FEBRUARY 18.

- - - - 0 - - - -

CLOSURE OF SHAM SHUI PO ILLEGAL STRUCTURES

\* \* \* \* \*

THE BUILDING AUTHORITY IS SEEKING TO CLOSE TWO UNAUTHORISED STRUCTURES AT A BUILDING IN SHAM SHUI PO SO THAT THEY CAN BE DEMOLISHED WITHOUT CAUSING DANGER TO OCCUPIERS AND THE PUBLIC.

THE UNAUTHORISED SINGLE-STOREY STRUCTURES, ON THE ROOF AT 34 BOUNDARY STREET, KOWLOON, ARE USED FOR DWELLING.

NOTICE OF INTENTION TO APPLY FOR A CLOSURE ORDER FROM THE HONG KONG DISTRICT COURT UNDER THE BUILDINGS ORDINANCE ON APRIL 15 WAS POSTED ON THE PREMISES TODAY (FRIDAY).

DEMOLITION WORK IS EXPECTED TO START AS SOON AS THE CLOSURE ORDER IS ISSUED.

- - - - 0 - - - -

BLANKETS TO STREET-SLEEPERS

\* \* \* \* \*

THE SOCIAL WELFARE DEPARTMENT LAST (THURSDAY) NIGHT DISTRIBUTED 505 BLANKETS TO 448 STREET-SLEEPERS IN VARIOUS PARTS OF THE TERRITORY.

ONE HUNDRED AND THIRTY-FOUR STREET-SLEEPERS ON HONG KONG ISLAND, 247 IN WEST KOWLOON, 17 IN EAST KOWLOON, 23 IN THE NEW TERRITORIES WEST AND 27 IN THE NEW TERRITORIES EAST WERE BENEFITTED.

A SPOKESMAN FOR THE DEPARTMENT SAID THE DEPARTMENT WOULD GIVE OUT BLANKETS TO STREET-SLEEPERS WHEN THE TEMPERATURE IS TO DROP TO BELOW 10 DEGREES CELSIUS.

THE EXERCISE MOUNTED YESTERDAY WAS THE THIRD OF ITS KIND TO HELP THE NEEDY IN THE STREETS THIS WINTER, HE ADDED.

- - - - 0 - - - -

FRIDAY, JANUARY 21, 1994

- 28 -

HONG KONG GOVERNMENT EXCHANGE FUND  
MONEY MARKET OPERATIONS

\* \* \* \* \*

	\$ MILLION
	-----
OPENING BALANCE IN THE ACCOUNT	1,240
REVERSAL OF LAF	+2,760
BALANCE AFTER REVERSAL OF LAF	4,000
NET INJECTION/WITHDRAWAL TODAY	NIL
EFFECT OF LAF TODAY	NIL
CLOSING BALANCE IN THE ACCOUNT	4,000
LAF RATE 2.00 BID/4.00 OFFER	TWI 127.2 *-0.2* 21.1.94

HONG KONG GOVERNMENT EXCHANGE FUND

EF BILLS		EF NOTES/HONG KONG GOVERNMENT BONDS				
TERMS	YIELD	TERM	ISSUE	COUPON	PRICE	YIELD
1 WEEK	2.01	13 MONTHS	2502	4.75	101.36	3.47
1 MONTH	2.56	16 MONTHS	2505	3.75	100.15	3.66
3 MONTHS	2.90	19 MONTHS	2508	4.625	101.25	3.83
6 MONTHS	3.06	22 MONTHS	2511	4.15	100.27	4.03
12 MONTHS	3.36	33 MONTHS	3610	4.20	99.29	4.52

TOTAL TURNOVER OF BILLS AND BONDS - 38,821 MN

CLOSED 21 JANUARY 1994

-----0-----