



DAILY INFORMATION BULLETIN

ISSUED BY GOVERNMENT INFORMATION SERVICES
BEACONSFIELD HOUSE, HONG KONG. TEL.: 842 8777

TUESDAY, DECEMBER 21, 1993

<u>CONTENTS</u>	<u>PAGE NO.</u>
BEST DEAL FOR ELDERLY ASSURED: GOVERNOR	1
GOVERNOR SPEAKS TO REPORTERS	2
CONSUMER PRICE INDICES FOR NOVEMBER	3
SAFETY FIRST, REVELLERS TOLD	9
BOOKLET EXPLAINS CONTINGENCY PLAN FOR DAYA BAY	10
GREATEST ASSET IN SOCIETY IS PEOPLE: THE GOVERNOR	11
CYC TREAT FOR STAMP COLLECTORS	11
HONG KONG AND NORWAY SIGN TEXTILES AGREEMENT	12
MANUFACTURER FINED FOR ILLEGAL CANDLE TRANSHIPMENT	13
COURT OF APPEAL JUDGE APPOINTED	13
YOUTH ORCHESTRA RECRUITS NEW MEMBERS	14
CHRISTMAS HOLIDAY CLINIC SERVICE	14
328 VMS RETURN TODAY	15
SALT WATER CUT ON TSING YI	15
HONG KONG GOVERNMENT EXCHANGE FUND TENDER RESULTS	15
HONG KONG GOVERNMENT EXCHANGE FUND MONEY MARKET OPERATIONS ..	16

TUESDAY, DECEMBER 21, 1993

- 1 -

BEST DEAL FOR ELDERLY ASSURED: GOVERNOR

* * * * *

THE GOVERNOR, THE RT HON CHRISTOPHER PATTEN, TODAY (TUESDAY) SAID WHAT HE WANTED TO SEE WAS THE BEST POSSIBLE DEAL FOR THE ELDERLY OF HONG KONG AT THE MOST REASONABLE PRICE AND THAT WAS WHAT EVERYBODY WANT TO SEE.

RESPONDING TO PRESS QUESTIONS ABOUT THE PROPOSED RETIREMENT SCHEME AFTER LAYING THE FOUNDATION STONE FOR THE LINGNAN COLLEGE'S NEW CAMPUS IN TUEN MUN, MR PATTEN SAID:

"THE DECISIONS WE ARE TAKING ARE EXTREMELY IMPORTANT ONES FOR THE COMMUNITY. THEY ARE GOING TO NEED A LOT OF DISCUSSION."

ASKED ABOUT THE COUNTER PROPOSAL FOR THE RETIREMENT SCHEME BY THE THREE POLITICAL PARTIES, THE GOVERNOR SAID EVERY PROPOSAL FOR HELPING THE RETIRED WOULD NEED VERY CAREFUL CONSIDERATION.

"I THINK THAT THOSE WHO PUT THE PROPOSAL FORWARD WILL WANT TO DISCUSS IT WITH THE SECRETARY FOR EDUCATION AND MANPOWER AND IN DUE COURSE WITH THE CHIEF SECRETARY AND THE FINANCIAL SECRETARY.

"IT SEEMS TO ME A LITTLE CURIOUS TO CRITICISE THE PROPOSAL WE PUT FORWARD AS REPRESENTING AN EXAMPLE OF THE WORST SORT OF WELFARE STATISM AND THEN TO PROPOSE ONESELF ARRANGEMENTS WHICH WILL INVOLVE A HUGE CONTRIBUTION FROM THE TAXPAYERS WITHOUT ANY CAP ON IT."

THE GOVERNOR REITERATED THAT THE MAIN ARGUMENTS WHICH THE WHOLE COMMUNITY HAD BETTER RECOGNISED AGAINST A CENTRAL PROVIDENT FUND WERE THAT THE CONTRIBUTIONS THAT PEOPLE WOULD HAVE TO MAKE WOULD BE HIGHER AND THE BENEFITS LOWER, NOT A VERY GOOD BARGAIN FOR THE COMMUNITY.

"THIS IS WHY I SUSPECT THAT WHEN THE COMMUNITY HAS A GOOD LOOK AT THE FIGURES, IT WILL REJECT IT," HE ADDED.

ELABORATING ON THE MEASURES TO HELP THE RETIRED COVERING HOUSING, HEALTH AND WELFARE SERVICES, MR PATTEN SAID A WORKING PARTY HAD BEEN SET UP TO TRY TO POOL TOGETHER ALL THE VARIOUS ASPECTS OF POLICY ON THE ELDERLY.

"BUT WE NEED A MORE COMPREHENSIVE SET OF ARRANGEMENTS AND THAT'S WHAT WE ARE NOW DISCUSSING.

"WE HAVE STARTED ON THE BUSINESS OF GIVING THE ELDERLY OF HONG KONG THE SERVICES WHICH THEY NEED, MORE SHELTERED ACCOMMODATION, BETTER HEALTH CARE PARTICULARLY AS PEOPLE LIVE FOR LONGER, BETTER WELFARE FACILITIES.

"ALL THOSE THINGS MATTER. ALL OF THEM ARE COSTLY BUT ALL OF THEM ARE DESERVED BY THE OLD PEOPLE OF HONG KONG," HE SAID.

- - - - 0 - - - -

/2

GOVERNOR SPEAKS TO REPORTERS

* * * * *

THE FOLLOWING IS THE TRANSCRIPT OF THE GOVERNOR, THE RT HON CHRISTOPHER PATTEN, SPEAKING TO REPORTERS AFTER THE FOUNDATION STONE LAYING CEREMONY FOR THE LINGNAN COLLEGE NEW CAMPUS IN TUEN MUN TODAY (TUESDAY):

GOVERNOR: I AM DELIGHTED TO HAVE BEEN ABLE TO ATTEND THE LAYING OF THIS FOUNDATION STONE. LINGNAN COLLEGE IS ONE OF OUR MOST IMPORTANT TERTIARY EDUCATION INSTITUTIONS. IT PROVIDES A MARVELLOUS EDUCATION FOR STUDENTS AND, I AM SURE, WILL CONTINUE TO DO SO ON THIS MAGNIFICENT NEW SITE AND THE SUN IS ALWAYS GOING TO SHINE HERE.

QUESTION: MR PATTEN, WHAT IS YOUR FEEDBACK TO THE COUNTER PROPOSAL FOR THE RETIREMENT SCHEME BY THE THREE POLITICAL PARTIES? DO YOU THINK THE PROPOSAL IS CLEAR AND SENSIBLE TO THE SOCIETY?

GOVERNOR: I THINK THAT THOSE WHO PUT THE PROPOSAL FORWARD WILL WANT TO DISCUSS IT WITH THE SECRETARY FOR EDUCATION AND MANPOWER AND IN DUE COURSE WITH THE CHIEF SECRETARY AND THE FINANCIAL SECRETARY. EVERY PROPOSAL FOR HELPING THE RETIRED WILL NEED VERY CAREFUL CONSIDERATION BUT I'D JUST LIKE TO MAKE TWO POINTS. IT SEEMS TO ME A LITTLE CURIOUS TO CRITICISE THE PROPOSAL WE PUT FORWARD AS REPRESENTING AN EXAMPLE OF THE WORST SORT OF WELFARE STATISM AND THEN TO PROPOSE ONESELF ARRANGEMENTS WHICH WILL INVOLVE A HUGE CONTRIBUTION FROM THE TAXPAYERS WITHOUT ANY CAP ON IT. SECONDLY, I REPEAT WHAT I'VE SAID BEFORE, THE MAIN ARGUMENTS WHICH THE WHOLE COMMUNITY HAD BETTER RECOGNISED AGAINST A CPF ARE THAT THE CONTRIBUTIONS THAT PEOPLE WOULD HAVE TO MAKE WOULD BE HIGHER AND THE BENEFITS LOWER, NOT A VERY GOOD BARGAIN FOR THE COMMUNITY WHICH IS WHY I SUSPECT THAT WHEN THE COMMUNITY HAS A GOOD LOOK AT THE FIGURES, IT WILL REJECT IT. THERE WAS AN EXCELLENT ARTICLE ON THE SUBJECT IN MING PAO YESTERDAY WHICH, I THINK, DREW ATTENTION TO SOME OF THESE ARGUMENTS. BUT I REPEAT WHAT WE'VE STARTED IS AN IMPORTANT DEBATE. PEOPLE WHO THOUGHT THIS WAS AN OPEN AND SHUT ISSUE, I THINK, NOW LEARNING THAT IT'S NOT. IT DEMANDS A GOOD DEAL OF DISCUSSION AND A GOOD DEAL OF DISCUSSION, I HOPE, WITHOUT SOME OF THE MISLEADING THINGS WHICH HAVE BEEN SAID IN THE LAST FEW DAYS. THE FIRST STEP SHOULD BE FOR THOSE WHO PUT FORWARD OTHER PROPOSALS TO DISCUSS THEM WITH THE SECRETARY FOR EDUCATION AND MANPOWER AND LET'S SEE HOW THE FIGURES ACTUALLY STAND UP WHEN THEY ARE EXAMINED IN DETAIL. ANYTHING ELSE.

QUESTION: YOU SAID THAT THE LEGISLATIVE COUNCIL IS QUITE CREDIBLE AND REPRESENTS PEOPLE'S IDEA, SO DO YOU MEAN THAT NOW THEIR PROPOSAL IS CONTRADICTORY TO THE PEOPLE'S DESIRE?

GOVERNOR: WHAT I BELIEVE IN IS AN EXECUTIVE WHICH IS ACCOUNTABLE TO THE LEGISLATURE. THAT MEANS YOU HAVE TO PROCEED BY GIVING A LEAD AND THEN GETTING INVOLVED IN DIALOGUE. IT DOESN'T MEAN THAT YOU DO THINGS WHICH YOU BELIEVE ARE WRONG. BUT, THE DECISIONS WE ARE TAKING ARE EXTREMELY IMPORTANT ONES FOR THE COMMUNITY. THEY ARE GOING TO NEED A LOT OF DISCUSSION. EVERYBODY KNOWS THEY ARE GOING TO NEED A LOT OF DISCUSSION. WHAT I WANT TO SEE IS THE BEST POSSIBLE DEAL FOR THE ELDERLY OF HONG KONG AT THE MOST REASONABLE PRICE AND THAT'S WHAT EVERYBODY MUST WANT TO SEE. ONE MORE.

/QUESTION

QUESTION: BUT IF THERE IS A STANDSTILL THAT THE LEGISLATORS DON'T PASS THE BILL PROPOSED BY THE GOVERNMENT, WILL YOU BACK TO THE, I MEAN, THE VOLUNTARY RETIREMENT SCHEME NOW?

GOVERNOR: WE ARE A LONG WAY FROM TALKING ABOUT LEGISLATION. THERE IS A LOT OF DISCUSSION TO DO. THERE IS A LOT OF STUDY OF THE FIGURES TO DO. AND I THINK EVERYBODY RECOGNISES THAT WE ALSO NEED TO DISCUSS THESE MATTERS WITH CHINESE OFFICIALS. THERE IS ONE OTHER POINT THAT I WOULD ADD. WE SET OUT IN MY SPEECH TO THE LEGISLATIVE COUNCIL IN OCTOBER A SERIES, A COMPREHENSIVE SERIES OF MEASURES TO HELP THE RETIRED, COVERING HOUSING, COVERING HEALTH, COVERING WELFARE SERVICES. WE ALSO SET UP A WORKING PARTY TO TRY TO POOL TOGETHER ALL THE VARIOUS ASPECTS OF POLICY ON THE ELDERLY. NOW, ONE OF THOSE POLICIES IS THE WHOLE QUESTION OF THE INCOME WHICH THE ELDERLY RECEIVE WHEN THEY ARE IN RETIREMENT, THE INCREASE THE AMOUNT THAT THEY RECEIVE, THE ALLOWANCES THAT THEY RECEIVE THIS YEAR. BUT WE NEED A MORE COMPREHENSIVE SET OF ARRANGEMENTS AND THAT'S WHAT WE ARE NOW DISCUSSING. WE HAVE STARTED ON THE BUSINESS OF GIVING THE ELDERLY OF HONG KONG THE SERVICES WHICH THEY NEED, MORE SHELTERED ACCOMMODATION, BETTER HEALTH CARE PARTICULARLY AS PEOPLE LIVE FOR LONGER, BETTER WELFARE FACILITIES. ALL THOSE THINGS MATTER. ALL OF THEM ARE COSTLY BUT ALL OF THEM ARE DESERVED BY THE OLD PEOPLE OF HONG KONG.

QUESTION: MR PATTEN, WILL YOU HAVE MEETING WITH DOUGLAS HURD AND JOHN MAJOR WHEN YOU GO TO LONDON TO ATTEND THE HEARING?

GOVERNOR: I ALWAYS HAVE MEETINGS WITH DOUGLAS HURD AND JOHN MAJOR. I WILL HAVE MEETINGS WITH THEM, FIRST OF ALL, BECAUSE OF MY RESPONSIBILITY IN HONG KONG AND SECONDLY, BECAUSE THEY ARE TWO OF MY CLOSEST FRIENDS. THANKS VERY MUCH.

- - - - 0 - - - -

CONSUMER PRICE INDICES FOR NOVEMBER

* * * * *

THE CONSUMER PRICE INDEX (A) IN NOVEMBER WAS 8.4% HIGHER THAN IN THE SAME MONTH LAST YEAR, ACCORDING TO FIGURES RELEASED TODAY (TUESDAY) BY THE CENSUS AND STATISTICS DEPARTMENT.

THIS WAS APPRECIABLY LOWER THAN THE CORRESPONDING INCREASE OF 9% IN OCTOBER.

THE SLOWER INCREASE IN THE CPI(A) IN NOVEMBER WAS MAINLY DUE TO A MODERATION IN THE PRICES OF FRESH VEGETABLES, FOLLOWING THE EARLIER SURGE DUE TO BAD WEATHER CONDITIONS.

A GOVERNMENT SPOKESMAN NOTED THAT TAKING THE FIRST 11 MONTHS TOGETHER, THE YEAR-ON-YEAR RATE OF INCREASE IN THE CPI(A) AVERAGED AT 8.5%.

THIS WAS THE SAME AS THE RECENTLY REVISED FORECAST INFLATION RATE FOR 1993 AS A WHOLE, AND WAS CONSIDERABLY LOWER THAN THE AVERAGES OF 12% RECORDED IN 1991 AND 9.4% IN 1992.

THE CPI(B) AND THE HANG SENG CPI WERE HIGHER BY 8.4% AND 9.5% RESPECTIVELY IN NOVEMBER THAN IN THE SAME MONTH LAST YEAR. THE CORRESPONDING INCREASES IN OCTOBER WERE 8.7% AND 9.4%.

THE COMPOSITE CPI, WHICH IS COMPILED BASED ON THE COMBINED EXPENDITURE PATTERN OF HOUSEHOLDS COVERED BY THE THREE CPIS, SHOWED AN INCREASE OF 8.7% IN NOVEMBER OVER THE SAME MONTH LAST YEAR. THIS WAS LOWER THAN THE CORRESPONDING INCREASE OF 9% IN OCTOBER.

COMPARING NOVEMBER 1993 WITH NOVEMBER 1992, RELATIVELY SLOWER INCREASES IN PRICES WERE RECORDED FOR FUEL AND LIGHT (3.2% IN THE CPI(A) AND 3.4% IN THE CPI(B)); DURABLE GOODS (3.9% AND 3.8%); MISCELLANEOUS GOODS (6.4% AND 5.9%); FOOD EXCLUDING MEALS AT RESTAURANTS (6.9% IN BOTH CPI(A) AND CPI(B)); AND CLOTHING AND FOOTWEAR (7.7% IN THE CPI(A) AND 7.9% IN THE CPI(B)).

ON THE OTHER HAND, RELATIVELY FASTER INCREASES IN PRICES WERE RECORDED FOR HOUSING (10.9% IN THE CPI(A) AND 10.7% IN THE CPI(B)); MISCELLANEOUS SERVICES (9.9% AND 9.5%); AND TRANSPORT (9.7% AND 9%).

AS FOR MEALS AT RESTAURANTS AND ALCOHOLIC DRINKS AND TOBACCO, THEIR CORRESPONDING INCREASES WERE 8.3% AND 8.7% IN THE CPI(A) AND 8.3% AND 8.1% IN THE CPI(B).

COMPARING NOVEMBER 1993 WITH OCTOBER 1993, THE CPI(A) DECREASED BY 0.5% WHILE THE CPI(B) INCREASED BY 0.2%. HOWEVER, THIS COMPARISON COULD HAVE BEEN AFFECTED BY SEASONAL FACTORS.

FOR THE THREE MONTHS ENDING NOVEMBER 1993, THE CPI(A) AND CPI(B) WERE, ON AVERAGE, HIGHER BY 8.5% AND 8.4% RESPECTIVELY THAN IN THE THREE MONTHS ENDING NOVEMBER 1992.

FOR THE PERIOD FROM JANUARY TO NOVEMBER 1993, THE CPI(A) AND CPI(B) WERE, ON AVERAGE, HIGHER BY 8.5% AND 8.7% RESPECTIVELY THAN IN THE CORRESPONDING PERIOD IN 1992.

FOR THE 12 MONTHS ENDING NOVEMBER 1993, THE CPI(A) AND CPI(B) WERE, ON AVERAGE, HIGHER BY 8.6% AND 8.8% RESPECTIVELY THAN IN THE PRECEDING 12-MONTH PERIOD.

SEASONALLY ADJUSTED SERIES ARE ALSO AVAILABLE FOR THE CPIS. THE DESEASONALISED CPI(A) AND CPI(B) BOTH INCREASED AT AN AVERAGE RATE OF 0.8% PER MONTH DURING THE THREE MONTHS ENDING NOVEMBER 1993.

THE CONSUMER PRICE INDEX REPORT

MORE DETAILS ARE GIVEN IN THE "CONSUMER PRICE INDEX REPORT" FOR NOVEMBER 1993, WHICH IS AVAILABLE AT \$12 A COPY FROM THE GOVERNMENT PUBLICATIONS CENTRE, GENERAL POST OFFICE BUILDING, GROUND FLOOR, CONNAUGHT PLACE, HONG KONG; OR FROM THE PUBLICATIONS SECTION OF THE CENSUS AND STATISTICS DEPARTMENT, 19TH FLOOR, WANCHAI TOWER, 12 HARBOUR ROAD, WAN CHAI, HONG KONG.

FOR LOCAL AND OVERSEAS MAILINGS, CONTACT SHOULD BE MADE WITH THE INFORMATION SERVICES DEPARTMENT, FRENCH MISSION BUILDING, 1 BATTERY PATH, HONG KONG.

FOR ENQUIRIES ABOUT THE INDICES, PLEASE TELEPHONE THE CONSUMER PRICE INDEX SECTION OF THE CENSUS AND STATISTICS DEPARTMENT ON 805 6403.

DETAILS REGARDING THE HANG SENG CPI ARE CONTAINED IN THE HANG SENG CPI REPORT ISSUED BY THE ECONOMIC RESEARCH DEPARTMENT OF HANG SENG BANK LTD.

Table 1 Consumer Price Indices and Rates of Increase for November 1993
(Oct. 89 - Sep. 90 = 100)

Component	CPI(A)		CPI(B)		Hang Seng CPI		Composite CPI	
	Index for Nov 93	% change over Nov 92	Index for Nov 93	% change over Nov 92	Index for Nov 93	% change over Nov 92	Index for Nov 93	% change over Nov 92
Food	134.1	+7.6	136.0	+7.7	136.2	+7.7	135.2	+7.7
Meals bought away from home	143.6	+8.3	143.6	+8.3	141.5	+8.3	143.1	+8.3
Food, excluding meals bought away from home	124.6	+6.9	125.5	+6.9	127.1	+6.7	125.4	+6.9
Housing	154.3	+10.9	154.8	+10.7	156.7	+13.2	155.3	+11.5
Fuel and light	120.4	+3.2	119.7	+3.4	119.3	+3.6	119.9	+3.3
Alcoholic drinks and tobacco	181.2	+8.7	170.7	+8.1	166.2	+8.0	175.4	+8.4
Clothing and footwear	133.4	+7.7	134.9	+7.9	152.8	+10.2	140.6	+8.7
Durable goods	111.6	+3.9	111.3	+3.8	117.1	+4.3	113.1	+4.0
Miscellaneous goods	127.8	+6.4	124.9	+5.9	123.6	+5.6	125.6	+6.0
Transport	139.1	+9.7	138.3	+9.0	137.7	+7.6	138.4	+8.9
Miscellaneous services	149.6	+9.9	145.2	+9.5	138.0	+8.7	144.4	+9.4
All items	139.4	+8.4	139.9	+8.4	142.2	+9.5	140.3	+8.7

The 1989/90-based consumer price indices are based on the expenditure patterns derived from the 1989/90 Household Expenditure Survey. The CPI(A) is based on the expenditure pattern of about 50% of urban households in Hong Kong, which had an average monthly expenditure of \$2,500-\$9,999 in 1989/90. The CPI(B) is based on the expenditure pattern of the next 30% of urban households, which had an average monthly expenditure of \$10,000-\$17,499 in the same period. The Hang Seng CPI is based on the expenditure pattern of the next 10% of urban households, which had an average monthly expenditure of \$17,500-\$37,499 in 1989/90.

Whereas the CPI(A), CPI(B) and Hang Seng CPI are based on the expenditure patterns of groups of households with different magnitudes of household expenditure, the Composite CPI is compiled based on the expenditure pattern of all these households taken together. Thus, while the CPI(A), CPI(B) and Hang Seng CPI show the impact of consumer price changes on different groups of households, the Composite CPI shows the impact of consumer price changes on the household sector generally.

Table 2 Consumer Price Indices for January 1991 - November 1993
(Oct. 89 - Sep. 90 = 100)

<u>Year/month</u>	<u>CPI(A)</u>	<u>CPI(B)</u>	<u>Hang Seng CPI</u>	<u>Composite CPI</u>
1991 January	108.3	108.4	108.6	108.4
February	110.3	110.1	110.2	110.2
March	111.9	111.1	110.7	111.3
April	113.9	113.0	112.0	113.1
May	114.0	113.6	113.4	113.7
June	114.6	114.1	113.9	114.2
July	115.4	114.8	113.9	114.8
August	116.0	115.3	114.6	115.4
September	116.8	116.1	115.8	116.3
October	117.2	116.8	117.4	117.1
November	117.7	117.6	118.7	117.9
December	118.1	118.3	118.5	118.3
1992 January	119.7	119.3	119.4	119.5
February	121.8	121.2	121.0	121.4
March	122.5	121.9	121.8	122.1
April	124.0	123.4	122.9	123.5
May	124.0	123.8	124.2	124.0
June	125.3	125.1	125.2	125.2
July	125.5	125.4	125.4	125.4
August	125.6	125.9	125.8	125.8
September	128.3	127.9	127.5	128.0
October	128.4	128.4	128.6	128.5
November	128.5	129.0	129.9	129.0
December	129.3	129.8	130.0	129.7
1993 January	131.8	131.6	131.5	131.7
February	132.4	132.2	132.0	132.2
March	132.0	132.2	133.1	132.4
April	133.5	133.9	134.5	133.9
May	134.5	134.8	136.3	135.1
June	136.0	135.9	137.1	136.3
July	135.8	136.1	136.9	136.2
August	136.3	136.6	137.4	136.7
September	138.4	138.3	139.2	138.6
October	140.0	139.6	140.7	140.0
November	139.4	139.9	142.2	140.3

Chart 1 Year-on-year Rates of Increase in CPI(A)

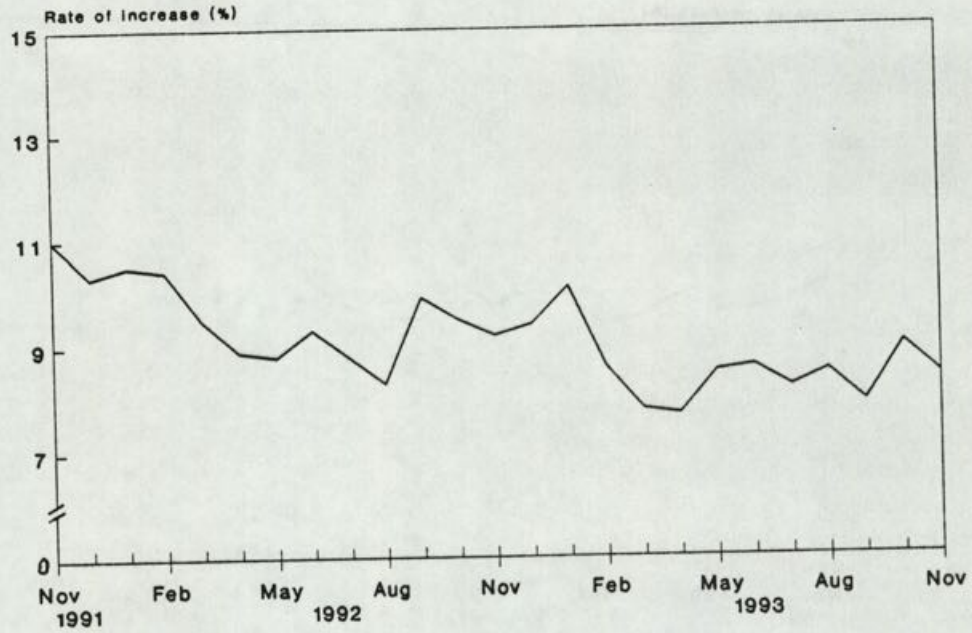


Chart 2 Year-on-year Rates of Increase in CPI(B)

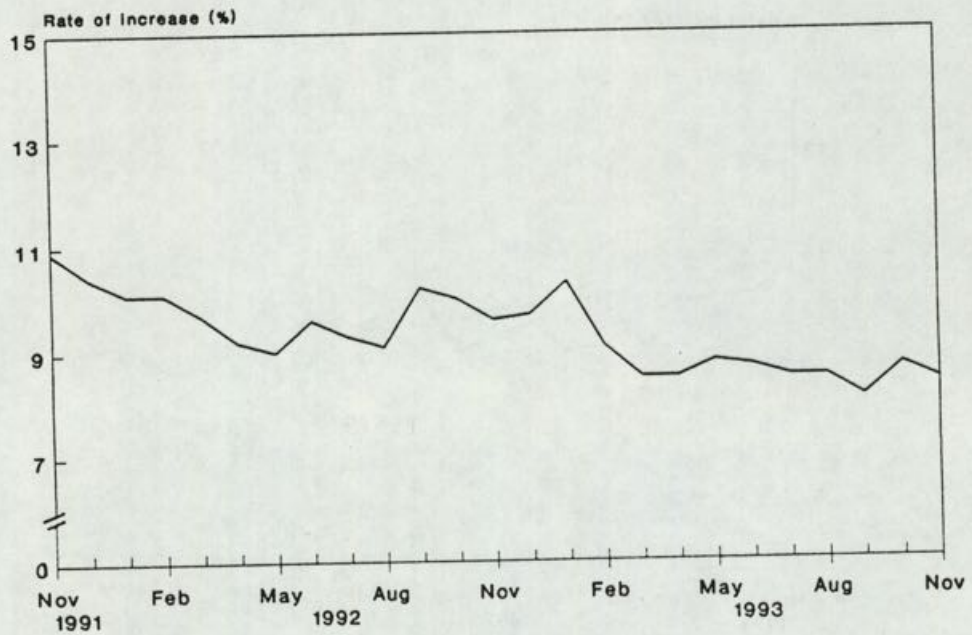


Chart 3 Year-on-year Rates of Increase in Hang Seng CPI

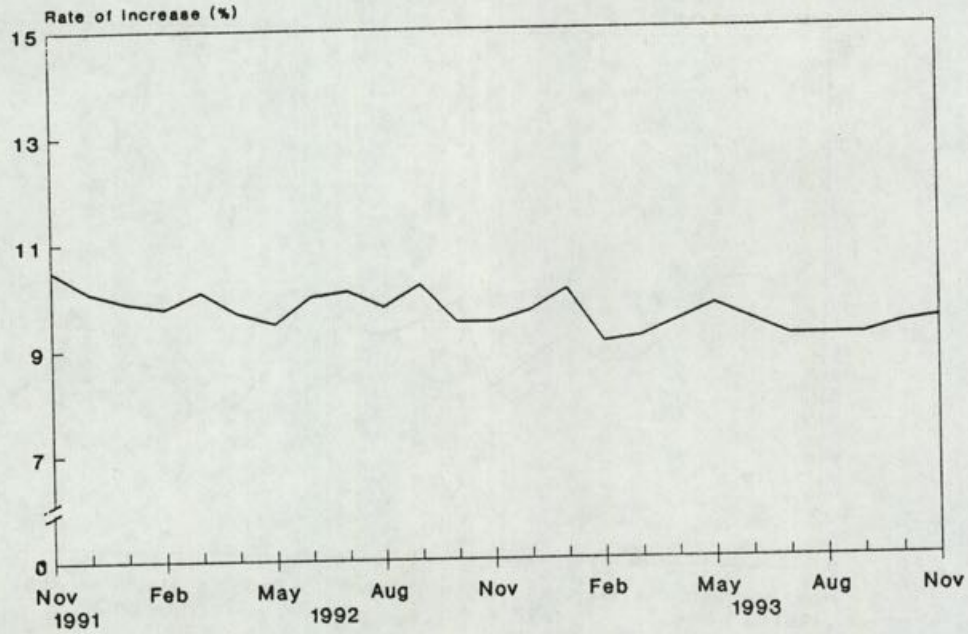
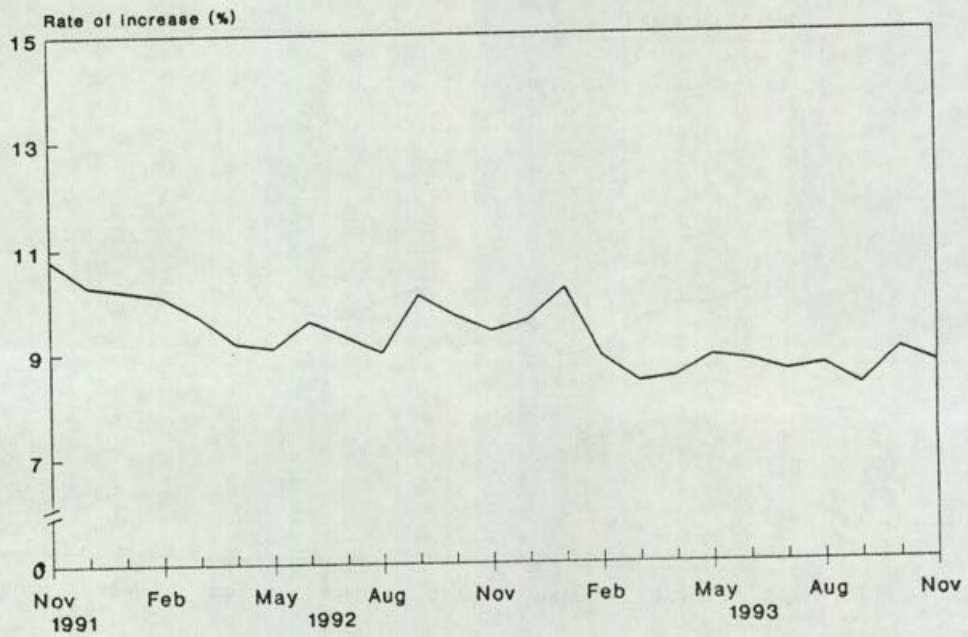


Chart 4 Year-on-year Rates of Increase in Composite CPI



TUESDAY, DECEMBER 21, 1993

- 9 -

SAFETY FIRST, REVELLERS TOLD

* * * * *

POLICE TODAY (TUESDAY) APPEALED TO MEMBERS OF THE PUBLIC TO BE COURTEOUS, PATIENT AND TO EXERCISE RESTRIANT WHILE VISITING LAN KWAI FONG DURING THE FORTHCOMING CHRISTMAS EVE AND NEW YEAR'S EVE.

CENTRAL DISTRICT COMMANDER, MR CHEUNG CHI-SHUM, SAID IN A PRESS CONFERENCE THIS AFTERNOON THAT THOUSANDS OF PEOPLE WOULD BE EXPECTED TO VISIT LAN KWAI FONG AND ITS VICINITY ON BOTH THE NIGHTS OF DECEMBER 24 (FRIDAY) AND DECEMBER 31 (FRIDAY).

BASED ON THE SUCCESSFUL CROWD CONTROL ARRANGEMENTS IN LAN KWAI FONG IN THE RECENT HALLOWEEN, ABOUT 235 POLICE OFFICERS WOULD BE DEPLOYED TO MAINTAIN CROWD CONTROL IN THE COMING FESTIVE PERIODS.

HE POINTED OUT THAT THE DEPLOYMENT OF POLICE OFFICERS WOULD ALSO BE ADJUSTED ACCORDING TO THE REAL SITUATION ON CHRISTMAS DAY, BOXING DAY AND NEW YEAR.

MR CHEUNG NOTED THAT POLICE WOULD TAKE ACTION TO RESTRICT THE INFLOW OF THE PEOPLE INTO LAN KWAI FONG WHENEVER THE NUMBER OF VISITORS WITHIN THE AREA REACHED UP TO 5,000.

"PEOPLE WILL ONLY BE ALLOWED TO ENTER THE AREA THROUGH THE LOWER ENTRANCE AT THE JUNCTION OF D'AGUILAR STREET AND WELLINGTON STREET," HE ADDED.

SIMULTANEOUSLY, PEOPLE WILL BE ABLE TO LEAVE VIA THE EXIT POINTS AT THE JUNCTION OF WAI TAK LANE AND WELLINGTON STREET, AND AT THE JUNCTION OF D'AGUILAR STREET AND WYNDHAM STREET.

MR CHEUNG STRESSED THAT PUBLIC SAFETY WAS THE MAIN CONCERN OF POLICE. THEREFORE, POLICE WOULD RESTRICT PEOPLE FROM ENTERING LAN KWAI FONG IF THE AREA WAS CONSIDERED TO BE OVERCROWDED.

HE ALSO REMINDED THE PUBLIC THAT PARKING FACILITIES AT 10 STREETS WITHIN THE AREA WOULD BE TEMPORARILY SUSPENDED STARTING FROM 6 PM ON CHRISTMAS EVE AND NEW YEAR'S EVE.

THESE INCLUDED: ARBUTHNOT ROAD, WYNDHAM STREET, GLENEALY, D'AGUILAR STREET, WELLINGTON STREET, LOWER ALBERT STREET, ICE HOUSE STREET, STANLEY STREET AND QUEEN'S ROAD CENTRAL.

HE SAID DISTRICT ENFORCEMENT WOULD BE IMPLEMENTED, INCLUDING TOWING OF VEHICLES WITHOUT PRIOR NOTICE.

MEDICAL TEAMS AND AMBULANCES WILL BE IN ATTENDANCE, PROVIDED BY THE ST JOHN'S AMBULANCE BRIGADE AND THE AUXILIARY MEDICAL SERVICE.

"WE WANT PEOPLE TO HAVE A GOOD TIME SO POLICE WILL ADOPT A FLEXIBLE ATTITUDE TOWARDS MAINTAINING ORDER BUT WE WILL TAKE FIRM ACTION AGAINST TROUBLE-MAKERS," MR CHEUNG ADDED.

- - - - 0 - - - -

/10

BOOKLET EXPLAINS CONTINGENCY PLAN FOR DAYA BAY

* * * * *

THE GOVERNMENT HAS PUBLISHED A BOOKLET TO FURTHER EXPLAIN TO THE PUBLIC THE VARIOUS COUNTER-MEASURES TO BE TAKEN IN THE UNLIKELY EVENT OF AN ACCIDENT AT THE GUANGDONG NUCLEAR POWER STATION (GNPS).

COPIES OF THE BOOKLET, IN CHINESE AND ENGLISH, ARE NOW AVAILABLE FOR COLLECTION AT DISTRICT OFFICES AND THE GOVERNMENT PUBLICATIONS CENTRE, GENERAL POST OFFICE BUILDING, GROUND FLOOR, CONNAUGHT PLACE, CENTRAL, A GOVERNMENT SPOKESMAN SAID TODAY (TUESDAY).

IN ACCORDANCE WITH INTERNATIONAL PRACTICE, THE GOVERNMENT HAS DRAWN UP A COMPREHENSIVE CONTINGENCY PLAN TO ENSURE THAT THERE WILL BE A QUICK AND TIMELY RESPONSE TO MINIMISE ANY POSSIBLE HEALTH RISKS TO THE HONG KONG PUBLIC IN THE UNLIKELY EVENT OF AN ACCIDENT AT THE GNPS WHICH MAY LEAD TO A RADIOACTIVE RELEASE AFFECTING HONG KONG.

IN NOVEMBER 1990, AND AGAIN IN MAY THIS YEAR, THE PLAN UNDERWENT COMPREHENSIVE TESTING UNDER THE OBSERVATION OF THE INTERNATIONAL ATOMIC ENERGY AGENCY (IAEA).

"THESE EXERCISES HAVE SHOWN THAT THE PLAN IS SOUND AND ALL THE DEPARTMENTS AND AGENCIES INVOLVED ARE FULLY PREPARED TO RESPOND IF THERE IS A RELEASE OF RADIOACTIVE MATERIAL FROM THE GNPS," THE SPOKESMAN SAID.

THE BOOKLET OUTLINES THE PRINCIPAL ELEMENTS OF THE PLAN, WHICH COVER:

- (A) EARLY NOTIFICATION TO HONG KONG BY THE CHINESE EMERGENCY AUTHORITIES OF ACCIDENTS AT THE GNPS WHICH MAY GIVE RISE TO AN OFF-SITE RADIOLOGICAL RELEASE;
- (B) CONTINUOUS TERRITORY-WIDE RADIATION MONITORING;
- (C) RAPID ASSESSMENT OF THE INFORMATION GATHERED THROUGH (A), (B) OR OTHER MEANS, AND CONSIDERATION OF NECESSARY COUNTER-MEASURES;
- (D) RAPID ALERT OF ALL DEPARTMENTS INVOLVED IN THE ACTIVATION AND IMPLEMENTATION OF THE PLAN;
- (E) THE IMPLEMENTATION OF COUNTER-MEASURES TO MITIGATE THE EFFECTS OF ANY RADIOLOGICAL EXPOSURE; AND
- (F) THE PROVISION OF ACCURATE AND TIMELY INFORMATION TO THE PUBLIC ON THE DEVELOPING SITUATION, AND OF ADVICE ON WHAT TO DO.

THE PUBLICATION IS IN ADDITION TO A LEAFLET PUBLISHED IN SEPTEMBER THIS YEAR, COPIES OF WHICH HAVE BEEN DISTRIBUTED THROUGH ALL DISTRICT OFFICES, PUBLIC HOUSING ESTATE OFFICES AND SCHOOLS.

GREATEST ASSET IN SOCIETY IS PEOPLE: THE GOVERNOR

* * * * *

THE GREATEST ASSET A SOCIETY CAN HAVE IS PEOPLE INSPIRED WITH LIVELY HABITS OF LEARNING AND THINKING, WITH WELL-DEVELOPED PERSONALITIES AND WITH COMMITMENT TO SERVE THE COMMUNITY, THE GOVERNOR, THE RT HON CHRISTOPHER PATTEN, SAID TODAY (TUESDAY).

OFFICIATING AT THE FOUNDATION STONE LAYING CEREMONY FOR LINGNAN COLLEGE'S NEW CAMPUS DEVELOPMENT IN TUEN MUN, THE GOVERNOR SAID THIS BELIEF HAS BEEN PUT INTO PRACTICE THROUGH THE DETERMINATION OF LINGNAN'S TEACHERS AND ADMINISTRATORS TO PROVIDE PROGRAMMES OF STUDIES OF HIGH STANDARD.

MR PATTEN SAID THE NEW TUEN MUN CAMPUS FOR LINGNAN COLLEGE MARKED THE START OF AN ASSOCIATION THAT WOULD WORK TO THE ADVANTAGE BOTH OF LINGNAN COLLEGE AND OF THIS TREMENDOUS NEW TOWN.

THE GOVERNOR SAID: "BOTH THIS NEW TOWN AND THIS NEW CAMPUS ARE BEING BUILT TO PROVIDE AN ENVIRONMENT THAT GIVES OPPORTUNITY AND ENCOURAGEMENT TO PEOPLE TO BUILD A BETTER FUTURE FOR THEMSELVES."

- - - - 0 - - - -

CYC TREAT FOR STAMP COLLECTORS

* * * * *

STAMP COLLECTORS WILL HAVE A NEW COLLECTION - THE COMMUNITY YOUTH CLUB'S SOUVENIR COVER - FROM THURSDAY (DECEMBER 23) TO COMMEMORATE THE CLUB'S CONTRIBUTION TO SOCIETY.

ON SALE WILL BE THREE SOUVENIR COVERS - ORDINARY BLANK WITHOUT THE SPECIAL COMMUNITY CHEST STAMPS (\$5); ORDINARY BLANK WITH THE SPECIAL STAMP (\$20); AND GOLD-BLOCKED WITH THE STAMP (\$100).

"PROCEEDS FROM THE SALE OF THE COVERS WILL BE DONATED TO THE COMMUNITY CHEST," A SPOKESMAN FOR THE EDUCATION DEPARTMENT SAID TODAY (TUESDAY).

THE SPECIAL COVER DEPICTS THE CLUB'S WORLD RECORD-BREAKING GIANT POSTER ASSEMBLED BY ITS MEMBERS ON OCTOBER 26, AN EVENT OFFICIALLY RECORDED BY THE GUINNESS BOOK OF RECORDS.

"THE EVENT WAS PART OF A SERIES OF ACTIVITIES TO CELEBRATE THE 15TH ANNIVERSARY OF THE CLUB," THE SPOKESMAN EXPLAINED.

THE DIRECTOR OF EDUCATION, MR DOMINIC S W WONG; THE POSTMASTER GENERAL, MR M PAGLIARI; THE CHAIRMAN OF THE GREENING FOR THE CHEST ORGANISING COMMITTEE, MRS LOUISE MOK, AND CLUB MEMBERS WILL SELL THE SOUVENIR COVERS TO MEMBERS OF THE PUBLIC AT A SPECIAL BOOTH AT THE GENERAL POST OFFICE IN CONNAUGHT PLACE FROM 9.35 AM ON DECEMBER 30 (THURSDAY).

ARRANGEMENTS HAVE ALSO BEEN MADE WITH THE POSTMASTER GENERAL TO PROVIDE HAND-BACKED SERVICE FOR THE STAMPING OF A SPECIAL POSTMARK ON THE SOUVENIR COVERS ON DECEMBER 30 AT:

- BEACONSFIELD HOUSE POST OFFICE, CENTRAL DISTRICT;
- GENERAL POST OFFICE, CENTRAL DISTRICT;
- GRANVILLE ROAD POST OFFICE, TSIM SHA TSUI;
- PEAK ROAD POST OFFICE, THE PEAK;
- SHA TIN CENTRAL POST OFFICE; AND
- TSIM SHA TSUI POST OFFICE.

- - - - 0 - - - -

HONG KONG AND NORWAY SIGN TEXTILES AGREEMENT
* * * * *

REPRESENTATIVES OF HONG KONG AND THE NORWEGIAN GOVERNMENTS TODAY (TUESDAY) SIGNED A NEW AGREEMENT THAT WILL GIVE CERTAIN HONG KONG TEXTILE AND CLOTHING PRODUCTS BETTER ACCESS TO THE NORWEGIAN MARKET.

THE NEW AGREEMENT, WHICH WILL COME INTO FORCE ON JANUARY 1 NEXT YEAR ON EXPIRY OF THE CURRENT AGREEMENT, WAS SIGNED BY THE SECRETARY FOR TRADE AND INDUSTRY, MR T H CHAU AND THE ACTING NORWEGIAN CONSUL-GENERAL, MR LARS I ALMKLOV.

IT EXTENDS THE CURRENT AGREEMENT FOR A MAXIMUM OF TWO YEARS UNTIL DECEMBER 31, 1995.

THREE CATEGORIES AS AT PRESENT, NAMELY WOVEN JACKETS (CATEGORY 1), WOVEN TROUSERS (CATEGORY 2) AND BED LINEN (CATEGORY 7), REMAIN UNDER QUOTA RESTRAINT.

HONG KONG WILL ALSO CONTINUE TO PROVIDE NORWAY WITH QUARTERLY EXPORT LICENSING STATISTICS ON THE EXPORTS OF FISHING NETS (CATEGORY 70).

"THE NEW AGREEMENT IS AN IMPROVEMENT OVER THE EXISTING ONE BECAUSE IT PROVIDES FOR HIGHER GROWTH RATES AND IMPROVED FLEXIBILITY," MR CHAU SAID.

CONSULTATIONS BETWEEN HONG KONG AND NORWAY ON THE NEW AGREEMENT WERE HELD IN OSLO FROM OCTOBER 13 TO 15.

DETAILS OF THE NEW HONG KONG/NORWAY TEXTILES AGREEMENT AND THE RELATED QUOTA ALLOCATION AND CONTROL ARRANGEMENTS HAVE BEEN ANNOUNCED IN TRADE DEPARTMENT'S NOTICE TO EXPORTERS SERIES 3 NO. 109/93 OF DECEMBER 8.

- - - - 0 - - - -

MANUFACTURER FINED FOR ILLEGAL CANDLE TRANSHIPMENT

* * * * *

A CANDLE MANUFACTURER WAS FINED \$270,000 AT TUEN MUN MAGISTRACY YESTERDAY (MONDAY) FOR ILLEGALLY TRANSHIPPING \$980,000 WORTH OF CANDLES.

THE DEFENDANT, TSOI WAN-WAH, OWNER OF NO. 1 CHEMICAL (CANDLE) MANUFACTORY, PLEADED GUILTY TO THREE SUMMONSES OF GIVING FALSE INFORMATION IN APPLICATIONS FOR CERTIFICATES OF HONG KONG ORIGIN AND TWO SUMMONSES OF EXPORTING GOODS BEARING A FALSE TRADE DESCRIPTION.

THE GOODS INVOLVED WERE 942,000 PIECES OF CANDLES FOR EXPORT TO THE USA.

THE COURT HEARD THAT ACTING ON INFORMATION SUPPLIED BY THE U.S. CUSTOMS, HONG KONG CUSTOMS OFFICERS CONDUCTED THE INVESTIGATION AND REVEALED THAT BETWEEN AUGUST AND SEPTEMBER THIS YEAR, THE DEFENDANT'S COMPANY HAS EXPORTED TO THE USA TWO SHIPMENTS OF CHINA-ORIGIN CANDLES BEARING A FALSE "MADE IN HONG KONG" LABEL UNDER THREE CERTIFICATES OF HONG KONG ORIGIN.

THE SHIPMENTS WERE SEIZED BY THE U.S. CUSTOMS UPON ARRIVAL.

A CUSTOMS SPOKESMAN SAID THE OFFENCES WERE SERIOUS.

"THE CUSTOMS AND EXCISE DEPARTMENT WOULD STEP UP THEIR ENFORCEMENT ACTIONS TO CRACK DOWN ILLEGAL TRANSHIPMENTS SO THAT THE CONFIDENCE OF ITS TRADING PARTNERS IN HONG KONG'S CERTIFICATION CONTROL SYSTEM WOULD NOT BE UNDERMINED BY SOME DISHONEST BUSINESSMEN," HE SAID.

HE ADDED THAT THE MAXIMUM PENALTY FOR ILLEGAL TRANSHIPMENT IS A FINE OF \$500,000 AND TWO YEARS OF IMPRISONMENT ON EACH COUNT OF THE CERTIFICATION OFFENCE.

- - - - 0 - - - -

COURT OF APPEAL JUDGE APPOINTED

* * * * *

THE HON MR JUSTICE GODFREY HAS BEEN APPOINTED A JUSTICE OF APPEAL WITH EFFECT FROM TODAY (TUESDAY).

MR JUSTICE GODFREY WAS BORN IN ENGLAND ON JULY 30, 1933. HE WAS CALLED TO THE BAR BY THE HONOURABLE SOCIETY OF LINCOLN'S INN IN 1954 AND IN 1978 WAS ELECTED A BENCHER OF THE INN. IN 1971, HE WAS APPOINTED QUEEN COUNSEL.

FROM 1956 TO 1986, MR JUSTICE GODFREY WAS IN PRIVATE PRACTICE AT THE CHANCERY BAR. HE WAS APPOINTED A JUDGE OF THE HIGH COURT IN 1986.

- - - - 0 - - - -

TUESDAY, DECEMBER 21, 1993

- 14 -

YOUTH ORCHESTRA RECRUITS NEW MEMBERS

* * * *

THE HONG KONG YOUTH SYMPHONY ORCHESTRA OF THE MUSIC OFFICE OF THE RECREATION AND CULTURE BRANCH IS RECRUITING NEW MEMBERS FOR 1993/94.

THE ORCHESTRA WAS FORMED IN 1978 WITH THE AIM OF PROVIDING TRAINEES OF THE MUSIC OFFICE WITH ORCHESTRAL TRAINING.

OVER THE YEARS, THE ORCHESTRA HELD REGULAR CONCERTS IN HONG KONG AND GAVE PERFORMANCES OVERSEAS, INCLUDING AUSTRALIA, CYPRUS, FRANCE, ISRAEL, CHINA, THE UNITED KINGDOM, USA AND SINGAPORE.

APPLICANTS SHOULD BE UNDER 25 YEARS OF AGE AND HAVE ATTAINED GRADE VII OR ABOVE IN THE ROYAL SCHOOLS OF MUSIC EXAMINATION OR EQUIVALENT, IN AT LEAST ONE ORCHESTRAL MUSICAL INSTRUMENTS.

THE DEADLINE FOR APPLICATIONS IS JANUARY 7, NEXT YEAR. QUALIFIED APPLICANTS WILL BE INVITED TO ATTEND AN AUDITION ON JANUARY 23.

APPLICATION FORMS ARE NOW AVAILABLE AT ALL MUSIC CENTRES OF THE MUSIC OFFICE. COMPLETED FORMS SHOULD BE RETURNED TO THE HONG KONG MUSIC CENTRE, NINTH FLOOR, HONG KONG ARTS CENTRE, 2 HARBOUR ROAD, HONG KONG.

ENQUIRIES CAN BE MADE ON TEL 802 0657.

- - - - 0 - - - -

CHRISTMAS HOLIDAY CLINIC SERVICE

* * * * *

EIGHT GENERAL OUT-PATIENT CLINICS WILL REMAIN OPEN BETWEEN 9 AM AND 1 PM ON DECEMBER 27, WHICH IS THE FIRST WEEK-DAY AFTER CHRISTMAS DAY, THE DEPARTMENT OF HEALTH ANNOUNCED TODAY (TUESDAY).

THEY ARE: THE VIOLET PEEL HEALTH CENTRE AND SHAU KEI WAN JOCKEY CLUB CLINIC ON HONG KONG ISLAND; THE KWUN TONG JOCKEY CLUB HEALTH CENTRE, ROBERT BLACK HEALTH CENTRE AND YAU MA TEI JOCKEY CLUB CLINIC IN KOWLOON; THE LADY TRENCH POLYCLINIC, SHEK WU HUI JOCKEY CLUB CLINIC AND YUEN LONG JOCKEY CLUB HEALTH CENTRE IN THE NEW TERRITORIES.

THERE WILL BE NO HOLIDAY CLINIC SERVICE ON THE CHRISTMAS DAY.

- - - - 0 - - - -

/15

TUESDAY, DECEMBER 21, 1993

- 15 -

328 VMS RETURN TODAY

* * * * *

TWO GROUPS OF 328 VIETNAMESE MIGRANTS TODAY (TUESDAY) RETURNED TO VIETNAM UNDER THE VOLUNTARY REPATRIATION PROGRAMME OF THE UNITED NATIONS HIGH COMMISSIONER FOR REFUGEES.

COMPRISING 117 MEN, 89 WOMEN, 58 BOYS AND 64 GIRLS, THEY WERE THE 190TH BATCH TO GO BACK UNDER THE PROGRAMME.

THIS GROUP BROUGHT TO 12,076 THE TOTAL NUMBER OF VIETNAMESE MIGRANTS WHO HAVE RETURNED VOLUNTARILY THIS YEAR, AND TO 38,388 THE TOTAL NUMBER OF RETURNEES SINCE THE PROGRAMME STARTED IN MARCH 1989.

- - - - 0 - - - -

SALT WATER CUT ON TSING YI

* * * * *

SALT WATER SUPPLY TO ALL PREMISES ON TSING YI ISLAND WILL GO OFF FROM 10 AM ON THURSDAY (DECEMBER 23) TO 10 AM THE FOLLOWING DAY TO FACILITATE CONNECTION WORK ON WATERMAINS.

- - - - 0 - - - -

HONG KONG GOVERNMENT EXCHANGE FUND TENDER RESULTS

* * * * *

TENDER DATE	21 DEC 93	21 DEC 93
PAPER ON OFFER	EF BILLS	EF BILLS
ISSUE NUMBER	Q351	H380
AMOUNT APPLIED	HKD2,440 MN	HKD1,170 MN
AMOUNT ALLOTTED	HKD1,000 MN	HKD400 MN
AVERAGE YIELD ACCEPTED	3.07 PCT	3.19 PCT
HIGHEST YIELD ACCEPTED	3.08 PCT	3.21 PCT
PRO RATA RATIO	ABOUT 58 PCT	ABOUT 70 PCT
AVERAGE TENDER YIELD	3.09 PCT	3.23 PCT

/HONG KONG

HONG KONG GOVERNMENT EXCHANGE FUND

TENDERS TO BE HELD IN THE WEEK BEGINNING 27 DEC 1993 -

TENDER DATE	28 DEC 93	28 DEC 93
PAPER ON OFFER	EF BILLS	EF BILLS
ISSUE NUMBER	Q352	Y397
ISSUE DATE	29 DEC 93	29 DEC 93
MATURITY DATE	30 MAR 94	28 DEC 94
TENOR	91 DAYS	364 DAYS
AMOUNT ON OFFER	HKD1,000 + 200 MN	HKD300 + 90 MN
	- - - - 0 - - - -	

HONG KONG GOVERNMENT EXCHANGE FUND
MONEY MARKET OPERATIONS
* * * * *

	\$ MILLION

OPENING BALANCE IN THE ACCOUNT	4,110
REVERSAL OF LAF	-110
BALANCE AFTER REVERSAL OF LAF	4,000
NET INJECTION/WITHDRAWAL TODAY	NIL
EFFECT OF LAF TODAY	+206
CLOSING BALANCE IN THE ACCOUNT	4,206
LAF RATE 2.00 BID/4.00 OFFER TWI 113.9 **0.1* 21.12.93	

HONG KONG GOVERNMENT EXCHANGE FUND

EF BILLS			EF NOTES/HONG KONG GOVERNMENT BONDS			
TERMS	YIELD	TERM	ISSUE	COUPON	PRICE	YIELD
1 WEEK	3.18 PCT	14 MONTHS	2502	4.75	101.36	3.57
1 MONTH	3.11 PCT	17 MONTHS	2505	3.75	99.96	3.81
3 MONTHS	3.05 PCT	20 MONTHS	2508	4.625	101.04	4.01
6 MONTHS	3.20 PCT	23 MONTHS	2511	4.15	99.97	4.21
12 MONTHS	3.46 PCT	34 MONTHS	3610	4.20	98.91	4.66
TOTAL TURNOVER OF BILLS AND BONDS - 7,155 MN						
CLOSED 21 DECEMBER 1993						