



DAILY INFORMATION BULLETIN

ISSUED BY GOVERNMENT INFORMATION SERVICES
BEACONSFIELD HOUSE, HONG KONG. TEL.: 842 8777

FRIDAY, FEBRUARY 28, 1992

<u>CONTENTS</u>	<u>PAGE NO.</u>
UNEQUIVOCAL SUPPORT TO POLICE LEADERSHIP	1
OVER 98,000 VACANCIES AVAILABLE TO LOCAL WORKERS	2
CONSUMER PRICE INDICES FOR JANUARY 1992	3
PROVISIONAL TRADE FIGURES FOR JANUARY 1992	10
BANKRUPTCY (AMENDMENT) BILL 1992 GAZETTED	12
INLAND REVENUE (AMENDMENT)(NO. 2) BILL 1992	13
PAC TO RECOVENE HEARING ON UNIVERSITY FINANCES	14
NEW WATER CONTROL ZONE DECLARED	15
TENDER INVITATION FOR WESTERN HARBOUR CROSSING FRANCHISE	16
STUDY TO EXPLORE PORT DEVELOPMENT AT TSEUNG KWAN O	16
RECLAMATION TO BE CARRIED OUT AT TSEUNG KWAN O	17
TENDERS FOR WESTERN WHOLESALE MARKET PHASE-2	18
TENDERS INVITED FOR WORKS ON HOSPITAL FACILITIES	18
OPERATION TO WEED OUT DANGEROUS STRUCTURES	19
TENDERS FOR EXTENSION WORKS ON LION ROCK TUNNEL ADMINISTRATION BLOCK ..	20
UNAUTHORISED BUILDING WORKS TO BE CLOSED	21
1991 POPULATION CENSUS DATA CREMATED	21
120 VMS RETURN TO VIETNAM	22
PLACES AVAILABLE AT GOVERNMENT PRIMARY SCHOOLS	22
WITHDRAWAL OF FERRY SERVICES FOR OUTLYING ISLANDS	23
POSTMAN AWARDED IMPERIAL SERVICE MEDAL	23
MAIN BUILDING OF ST STEPHEN'S GIRLS' COLLEGE DECLARED MONUMENT	24
CLOSURE OF IMMIGRATION ABERDEEN OFFICE	25
HONG KONG GOVERNMENT EXCHANGE FUND MONEY MARKET OPERATIONS	25

FRIDAY, FEBRUARY 28, 1992

- 1 -

UNEQUIVOCAL SUPPORT TO POLICE LEADERSHIP

* * * * *

THE FOLLOWING IS A STATEMENT ISSUED BY THE POLICE HEADQUARTERS:

"ACTING COMMISSIONER OF POLICE JOHN THORPE, DEPUTY COMMISSIONERS JOHN SHEPPARD AND KEITH LOMAS, AND POLICE ADMINISTRATION OFFICER MIKE PAGLIARI STRONGLY REFUTE THE CRITICISM OF SENIOR FORCE MANAGEMENT AND IN PARTICULAR OF THE COMMISSIONER OF POLICE MR. LI KWAN-HA FOR WHOSE LEADERSHIP THEY EXPRESSED THEIR UNEQUIVOCAL SUPPORT.

SINCE MR LI HAS BEEN COMMISSIONER AND IN AT TIMES DIFFICULT CIRCUMSTANCES, HE HAS SHOWN UNSWERVING COMMITMENT TO THE CONTINUED DEVELOPMENT OF THE ROYAL HONG KONG POLICE. IN HIS NEGOTIATIONS WITH THE GOVERNMENT FOR IMPROVED PAY AND CONDITIONS OF SERVICE FOR MEMBERS OF THE FORCE AND IN HIS REPRESENTATIONS TO THE ADMINISTRATION FOR LIMITATIONS ON THE CUTBACKS AFFECTING PERSONNEL AND OTHER ISSUES MR LI AND HIS SENIOR STAFF HAVE WORKED EXTREMELY HARD AND WITH A GOOD MEASURE OF SUCCESS.

THE FORCE IS AND WILL REMAIN IN THE FUTURE AN ORGANISATION OF THE HIGHEST PROFESSIONAL CAPABILITY UPON WHICH THE COMMUNITY AS A WHOLE CAN RELY. THERE ARE IN EXISTENCE GOOD PROCEDURES FOR PERSONNEL OF THE FORCE TO MAKE KNOWN THEIR VIEWS AND GRIEVANCES. MATTERS CONCERNING THE FUTURE AND OTHER ISSUES SUCH AS PAY AND CONDITIONS OF SERVICE, PENSIONS, WORKING HOURS AND QUARTERS HAD BEEN FULLY REPRESENTED TO FORCE MANAGEMENT AND WERE BEING DEALT WITH AT ALL THE APPROPRIATE LEVELS BOTH WITHIN THE FORCE AND ELSEWHERE IN THE GOVERNMENT.

SENIOR FORCE MANAGEMENT IS INDEED WELL AWARE OF THE GOOD JOB BEING DONE BY THE FORCE AND ARE IN DAILY TOUCH WITH ALL MAJOR FORMATIONS TO MONITOR, GUIDE AND COMMAND UNIT AND INDIVIDUAL PERFORMANCE WHERE APPROPRIATE.

MENTION HAS BEEN MADE IN ONE ENGLISH LANGUAGE DAILY NEWSPAPER THAT SENIOR MANAGEMENT GAVE A 'MUTED RESPONSE' TO AN INCIDENT IN NIM WAN AND IN THE CASE OF AN ANTI-SMUGGLING OPERATION IN DECEMBER. THESE INCIDENTS WERE DEALT WITH AT THE HIGHEST DIPLOMATIC LEVELS AND IT WAS WHOLLY INAPPROPRIATE FOR SENIOR MANAGEMENT TO ENGAGE IN 'DRUM BEATING' OVER SUCH INCIDENTS."

----- 0 -----

/2

FRIDAY, FEBRUARY 28, 1992

- 2 -

OVER 98,000 VACANCIES AVAILABLE TO LOCAL WORKERS

* * * * *

THE LABOUR DEPARTMENT HAS RECEIVED 98,018 JOB VACANCIES FROM 8,807 EMPLOYERS INTENDING TO BRING IN FOREIGN WORKERS UNDER THE GENERAL IMPORTATION OF LABOUR SCHEME AT THE CLOSE OF APPLICATION TODAY (FRIDAY).

THESE VACANCIES INCLUDED 23,294 IN THE CATERING INDUSTRY, 18,474 IN THE CLOTHING INDUSTRY, 11,303 IN THE WHOLESALE AND RETAIL INDUSTRY AND 10,273 IN THE CONSTRUCTION INDUSTRY.

THE OTHERS ARE DISTRIBUTED IN VARIOUS INDUSTRIES IN THE MANUFACTURING AND SERVICE SECTORS.

"THESE VACANCIES WILL BE OFFERED FIRST TO JOB-SEEKERS REGISTERED WITH OUR LOCAL EMPLOYMENT SERVICE (LES), AS REQUIRED UNDER THE SCHEME," ASSISTANT COMMISSIONER FOR LABOUR MR ALFRED CHAN SAID.

"OUR STAFF ARE NOW GOING THROUGH RECORDS OF JOB-REGISTRANTS TO IDENTIFY SUITABLE CANDIDATES FOR REFERRAL TO PROSPECTIVE EMPLOYERS," MR CHAN SAID.

HE STRESSED THAT WHEN PROCESSING VACANCIES, LES STAFF WOULD CAREFULLY CONSIDER THE JOB SPECIFICATIONS AND CRITERIA SET FOR LOCAL WORKERS IN EACH CASE TO SEE IF THEY MATCH AND WOULD SUBMIT A REPORT TO THE EMPLOYMENT VISA CO-ORDINATING COMMITTEE (EVCC) WITH ITS ASSESSMENT AND RECOMMENDATIONS.

"IF AN EMPLOYER IS FOUND TO HAVE DELIBERATELY SET EXCESSIVELY RESTRICTIVE CRITERIA NOT COMMENSURATE WITH THE NATURE OF THE JOB FOR LOCAL WORKERS, OR REFUSES TO TAKE ON LOCAL WORKERS WITHOUT GOOD REASONS, HIS APPLICATION FOR QUOTA ALLOCATION UNDER THE SCHEME MAY BE REJECTED," HE SAID.

"THIS IS TO ENSURE THAT ALL LOCAL WORKERS ARE GIVEN A FAIR CHANCE TO CHOOSE A JOB BEFORE APPROVAL IS GIVEN FOR EMPLOYERS TO IMPORT WORKERS," HE ADDED.

COMMENTING ON REPORTS THAT SOME EMPLOYERS MAY OVERSTATE THEIR REQUIREMENTS FOR IMPORTED WORKERS, MR CHAN SAID THE EVCC WOULD TAKE INTO ACCOUNT AN APPLICANT'S SCALE OF OPERATION WHEN CONSIDERING HIS APPLICATION.

"THE SIZE OF A QUOTA TO BE ALLOCATED TO AN EMPLOYER UNDER THE SCHEME WILL HAVE NO DIRECT BEARING ON THE NUMBER OF IMPORTED WORKERS HE APPLIES FOR," MR CHAN SAID, ADDING THAT THE EVCC IS CONCERNED ONLY WITH AN APPLICANT'S ACTUAL REQUIREMENT.

HE ALSO REMINDED EMPLOYERS THAT SHOULD THEY BE ALLOCATED A QUOTA EVENTUALLY, THEY WILL HAVE TO PAY A LUMP SUM LEVY IN RESPECT OF EACH IMPORTED WORKER.

/"THE LEVY,

"THE LEVY, WHICH AMOUNTS TO \$9,600 FOR A TWO-YEAR CONTRACT, IS NON-REFUNDABLE AND WILL BE PAYABLE UPON THE ISSUE OF EMPLOYMENT VISA," HE ADDED.

"THIS LUMP SUM PAYMENT WILL BE USED AS ADDITIONAL FUNDS FOR ENHANCING RETRAINING PROGRAMMES FOR LOCAL WORKERS," MR CHAN SAID.

- - - - 0 - - - -

CONSUMER PRICE INDICES FOR JANUARY 1992

* * * * *

THE CONSUMER PRICE INDEX (A) IN JANUARY THIS YEAR WAS 10.5% HIGHER THAN IN JANUARY LAST YEAR, FIGURES RELEASED TODAY (FRIDAY) BY THE CENSUS AND STATISTICS DEPARTMENT SHOWED.

THE CPI(B) AND THE HANG SENG CPI WERE HIGHER BY 10.1% AND 9.9% RESPECTIVELY.

COMMENTING ON THE CPI(A), THE GOVERNMENT ECONOMIST, MR K. Y. TANG, SAID THE YEAR-ON-YEAR RATE OF INCREASE WAS SLIGHTLY HIGHER THAN IN DECEMBER, BUT WAS STILL BELOW THAT FOR THE FOURTH QUARTER OF LAST YEAR AS A WHOLE, CONSISTENT WITH THE DOWNWARD TREND WHICH EMERGED AFTER APRIL LAST YEAR.

"CONSUMER PRICES IN JANUARY 1992 WERE AFFECTED BY THE TIMING OF THE LUNAR NEW YEAR, WHICH WAS ADVANCED FROM MID-FEBRUARY LAST YEAR TO EARLY FEBRUARY THIS YEAR. THE SEASONAL VARIATIONS IN CONSUMER PRICES OCCURRED EARLIER THAN IN THE PREVIOUS YEAR," HE SAID.

MR TANG POINTED OUT THAT A COMPOSITE CPI WAS COMPILED BASED ON THE EXPENDITURE PATTERNS OF HOUSEHOLDS COVERED BY THE THREE CPIS.

"BECAUSE IT HAS A COVERAGE OF EXPENDITURE PATTERNS WHICH IS WIDER THAN ANY OF THOSE REPRESENTED BY THE INDIVIDUAL INDICES, THE COMPOSITE INDEX IS MORE REPRESENTATIVE OF THE OVERALL CONSUMER PRICE TREND," HE SAID.

THE COMPOSITE CPI SHOWED AN INCREASE OF 10.2% IN JANUARY THIS YEAR OVER THE SAME MONTH LAST YEAR.

FOLLOWING IS A FULLER STATEMENT FROM THE CENSUS AND STATISTICS DEPARTMENT ANALYSING THE VARIOUS COMPONENTS OF CONSUMER PRICE INDICES FOR JANUARY 1992:

THE CONSUMER PRICE INDEX (A) IN JANUARY THIS YEAR WAS 10.5% HIGHER THAN IN JANUARY LAST YEAR, A SPOKESMAN FOR THE CENSUS AND STATISTICS DEPARTMENT SAID TODAY (FRIDAY).

THE CPI(B) AND THE HANG SENG CPI WERE HIGHER BY 10.1% AND 9.9% RESPECTIVELY.

COMBINING THE EXPENDITURE PATTERNS OF HOUSEHOLDS COVERED BY THE THREE CPIS A COMPOSITE CPI HAD BEEN COMPILED. THIS INDEX SHOWED AN INCREASE OF 10.2% IN JANUARY 1992 OVER THE SAME MONTH IN 1991.

COMPARING JANUARY 1992 WITH JANUARY 1991, THE FUEL AND LIGHT COMPONENT REGISTERED A MARGINAL DECLINE IN BOTH THE CPI(A) AND CPI(B). THIS WAS MAINLY DUE TO LOWER CHARGE FOR TOWNGAS AS A RESULT OF REDUCED FUEL COST AND LOWER PRICE OF KEROSENE.

RELATIVELY SLOWER INCREASES IN PRICES WERE RECORDED FOR DURABLE GOODS (1.7% IN CPI(A) AND 1.8% IN CPI(B)); CLOTHING AND FOOTWEAR (5.6% IN CPI(A) AND 5.4% IN CPI(B)); AND MISCELLANEOUS GOODS (6.1% IN CPI(A) AND 5.4% IN CPI(B)).

MEANWHILE, RELATIVELY FASTER INCREASES IN PRICES WERE RECORDED FOR TRANSPORT (9.8% IN CPI(A) AND 8.4% IN CPI(B)); MEALS AT RESTAURANTS (10.7% IN BOTH CPI(A) AND CPI(B)); SERVICES (11.2% IN CPI(A) AND 11.0% IN CPI(B)); HOUSING (11.4% IN CPI(A) AND 12.4% IN CPI(B)); FOOD (EXCLUDING RESTAURANT MEALS) (12.6% IN CPI(A) AND 12.1% IN CPI(B)); AND ALCOHOLIC DRINKS AND TOBACCO (33.4% IN CPI(A) AND 26.8% IN CPI(B)).

THE INCREASE IN THE FOOD COMPONENT (EXCLUDING RESTAURANT MEALS) WAS PARTLY DUE TO HIGHER PRICES OF FRESH VEGETABLES IN JANUARY 1992 COMPARED WITH THE SAME MONTH IN 1991.

THE INCREASE IN THE ALCOHOLIC DRINKS AND TOBACCO COMPONENT WAS LARGELY DUE TO HIGHER PRICES OF CIGARETTES.

AS FROM JANUARY 1992, THE 1989/90-BASED CPI SERIES HAD BEEN USED IN PLACE OF THE 1984/85-BASED CPI SERIES IN PRESENTING THE YEAR-ON-YEAR COMPARISONS.

THE RATES OF CHANGE CALCULATED UNDER THE OLD AND THE NEW BASES SHOWED ONLY SMALL DIFFERENCES.

"THE NEW BASE REFERS TO THE MORE UP-TO-DATE CONSUMER EXPENDITURE PATTERNS AS DERIVED FROM THE 1989/90 HOUSEHOLD EXPENDITURE SURVEY," THE SPOKESMAN SAID.

COMPARING JANUARY 1992 WITH DECEMBER 1991, THE CPI(A) WAS HIGHER BY 1.3%, THE CPI(B) BY 0.8%, AND THE HANG SENG CPI BY 0.7%.

THIS COMPARISON IS, HOWEVER, AFFECTED BY SEASONAL FACTORS.

THE INCREASES IN THE INDICES WERE MAINLY DUE TO HIGHER PRICES OF FRESH VEGETABLES, HIGHER CHARGES FOR MEALS AT RESTAURANTS AND HIGHER RENTS FOR PRIVATE HOUSING.

ON THE OTHER HAND, PRICES OF CLOTHING AND FOOTWEAR RECORDED A DECREASE.

FOR THE THREE MONTHS ENDED JANUARY 1992, THE CPI(A) AND CPI(B) WERE, ON AVERAGE, HIGHER BY 10.6% AND 10.4% RESPECTIVELY THAN IN THE THREE MONTHS ENDED JANUARY 1991.

FOR THE 12 MONTHS ENDED JANUARY 1992, THE CPI(A) AND CPI(B) WERE, ON AVERAGE, HIGHER BY 12.0% AND 11.6% RESPECTIVELY THAN IN THE PRECEDING 12-MONTH PERIOD.

ON A SEASONALLY ADJUSTED BASIS, BOTH THE CPI(A) AND CPI(B) INCREASED AT AN AVERAGE RATE OF 0.8% PER MONTH DURING THE THREE MONTHS ENDED JANUARY 1992.

THIS WAS HIGHER THAN THE CORRESPONDING RATE OF INCREASE RECORDED DURING THE THREE MONTHS ENDED OCTOBER 1991, AT 0.5% FOR BOTH THE CPI(A) AND CPI(B).

THIS RISE WAS MAINLY DUE TO HIGHER PRICES OF FRESH VEGETABLES, WHICH ACCOUNTED FOR AROUND HALF OF THE INCREASES RECORDED IN THE INDICES FOR THE MONTH OF JANUARY.

FURTHER DETAILS ARE SHOWN IN TABLES 1 AND 2 AND CHARTS 1-4.

THE CONSUMER PRICE INDEX REPORT

MORE DETAILS ARE GIVEN IN THE "CONSUMER PRICE INDEX REPORT" FOR JANUARY 1992, WHICH IS AVAILABLE AT \$9.0 PER COPY FROM THE GOVERNMENT PUBLICATIONS SALES CENTRE, GROUND FLOOR, GENERAL POST OFFICE BUILDING; CONNAUGHT PLACE, CENTRAL, HONG KONG; OR FROM THE CENSUS AND STATISTICS DEPARTMENT, 19TH FLOOR, WANCHAI TOWER 1, 12 HARBOUR ROAD, WAN CHAI, HONG KONG; OR FROM THE INFORMATION SERVICES DEPARTMENT, FRENCH MISSION BUILDING, 1 BATTERY PATH, HONG KONG FOR LOCAL AND OVERSEAS MAILINGS.

WITH THE AVAILABILITY OF THE 1989/90-BASED CPIS, COMPILATION OF THE 1984/85-BASED CONSUMER PRICE INDEX NUMBERS WILL BE DISCONTINUED AFTER MARCH 1992.

FOR ENQUIRIES ABOUT THE INDICES, PLEASE TELEPHONE THE CONSUMER PRICE INDEX SECTION OF THE CENSUS AND STATISTICS DEPARTMENT ON TEL. 805 6403.

DETAILS REGARDING THE HANG SENG CPI ARE CONTAINED IN THE HANG SENG CPI REPORT ISSUED BY THE ECONOMIC RESEARCH DEPARTMENT OF HANG SENG BANK LTD.

NOTE TO EDITORS:

TABLE 1 SHOWS THE CONSUMER PRICE INDICES AND RATES OF INCREASE FOR JANUARY 1992. TABLE 2 SHOWS THE CONSUMER PRICE INDICES FOR OCT 1990 - JAN 1992. CHART 1 SHOWS THE YEAR-ON-YEAR RATES OF INCREASE IN CPI(A). CHART 2 SHOWS THE YEAR-ON-YEAR RATES OF INCREASE IN CPI(B), CHART 3 SHOWS YEAR-ON-YEAR RATES OF INCREASE IN HANG SENG CPI WHILE CHART 4 SHOWS YEAR-ON-YEAR RATES OF INCREASE IN COMPOSITE CPI.

Table 1 Consumer Price Indices and Rates of Increase for January 1992
(Oct. 89 - Sep. 90 = 100)

<u>Component</u>	<u>CPI(A)</u>		<u>CPI(B)</u>		<u>Hang Seng CPI</u>		<u>Composite CPI</u>	
	<u>Index for Jan.92</u>	<u>% change over Jan.91</u>	<u>Index for Jan.92</u>	<u>% change over Jan.91</u>	<u>Index for Jan.92</u>	<u>% change over Jan.91</u>	<u>Index for Jan.92</u>	<u>% change over Jan.91</u>
Food	119.7	+11.6	120.3	+11.3	119.4	+11.1	119.9	+11.4
Meals bought away from home	122.8	+10.7	122.8	+10.7	120.4	+10.7	122.2	+10.7
Food, excluding meals bought away from home	116.6	+12.6	117.0	+12.1	117.9	+12.0	117.0	+12.3
Housing	123.3	+11.4	123.8	+12.4	125.1	+11.3	124.1	+11.7
Fuel and light	113.2	-0.2	112.6	-0.3	113.2	-0.1	113.0	-0.2
Alcoholic drinks and tobacco	145.7	+33.4	139.4	+26.8	136.2	+23.4	142.2	+29.7
Clothing and footwear	110.0	+5.6	110.5	+5.4	114.8	+11.9	111.8	+7.6
Durable goods	105.4	+1.7	104.6	+1.8	106.7	+4.7	105.5	+2.6
Miscellaneous goods	112.4	+6.1	110.7	+5.4	109.9	+4.7	111.1	+5.5
Transport	119.8	+9.8	119.5	+8.4	120.7	+7.9	119.9	+8.8
Services	123.3	+11.2	121.7	+11.0	118.2	+9.2	121.1	+10.5
All items	119.7	+10.5	119.3	+10.1	119.4	+9.9	119.5	+10.2

The 1989/90-based consumer price indices are based on the expenditure patterns derived from the 1989/90 Household Expenditure Survey. The CPI(A) is based on the expenditure pattern of about 50% of urban households in Hong Kong, which had an average monthly expenditure of \$2,500-\$9,999 a month in 1989/90. The CPI(B) is based on the expenditure pattern of the next 30% of urban households, which had an average monthly expenditure of \$10,000-\$17,499 in the same period. The Hang Seng CPI is based on the expenditure pattern of the next 10% of urban households, which had an average monthly expenditure of \$17,500-\$37,499 in 1989/90.

Whereas the CPI(A), CPI(B) and Hang Seng CPI are based on the expenditure patterns of groups of households with different magnitudes of household expenditure, the Composite CPI is compiled based on the expenditure pattern of all these households taken together. Thus, while the CPI(A), CPI(B) and Hang Seng CPI show the impact of consumer price changes on different groups of households, the Composite CPI shows the impact of consumer price changes on the household sector generally.

Table 2 Consumer Price Indices for Oct. 1990 - Jan. 1992
(Oct. 89 - Sep. 90 = 100)

<u>Year/month</u>	<u>CPI(A)</u>	<u>CPI(B)</u>	<u>HSCPI</u>	<u>Composite CPI</u>
1990 Oct	105.8	105.9	106.7	106.1
Nov	106.5	106.7	107.8	106.9
Dec	107.4	107.6	108.1	107.7
1991 Jan	108.3	108.4	108.6	108.4
Feb	110.3	110.1	110.2	110.2
Mar	111.9	111.1	110.7	111.3
Apr	113.9	113.0	112.0	113.1
May	114.0	113.6	113.4	113.7
Jun	114.6	114.1	113.9	114.2
Jul	115.4	114.8	113.9	114.8
Aug	116.0	115.3	114.6	115.4
Sep	116.8	116.1	115.8	116.3
Oct	117.2	116.8	117.4	117.1
Nov	117.7	117.6	118.7	117.9
Dec	118.1	118.3	118.5	118.3
1992 Jan	119.7	119.3	119.4	119.5

/Chart 1

Chart 1 Year-on-year Rates of Increase in CPI(A)

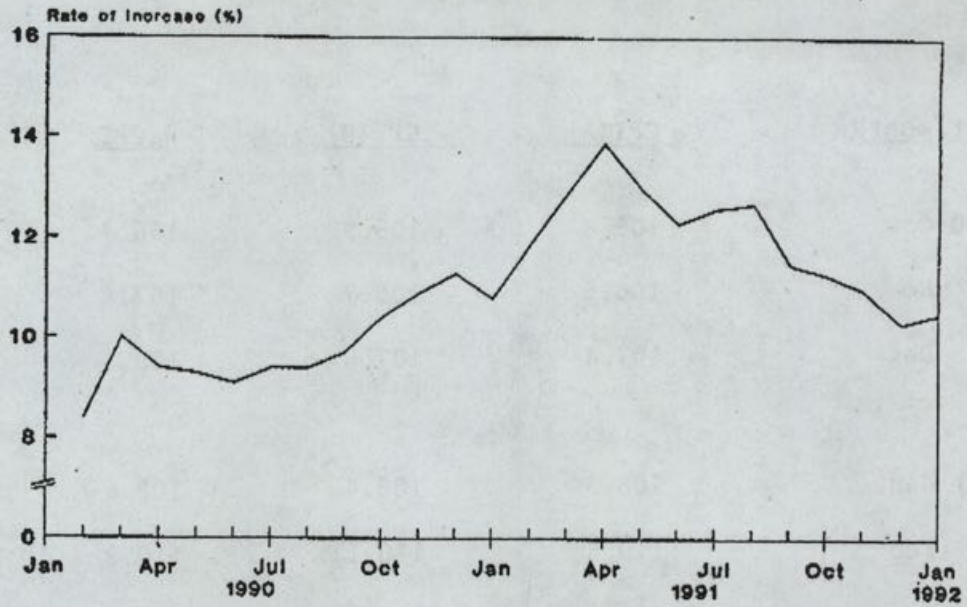
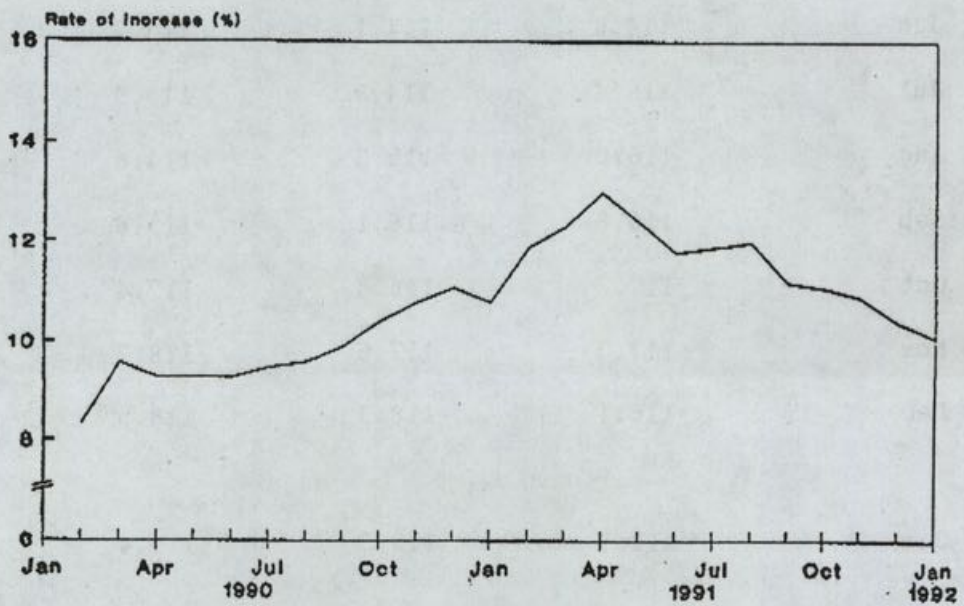


Chart 2 Year-on-year Rates of Increase in CPI(B)



/Chart 3

Chart 3 Year-on-year Rates of Increase in Hang Seng CPI

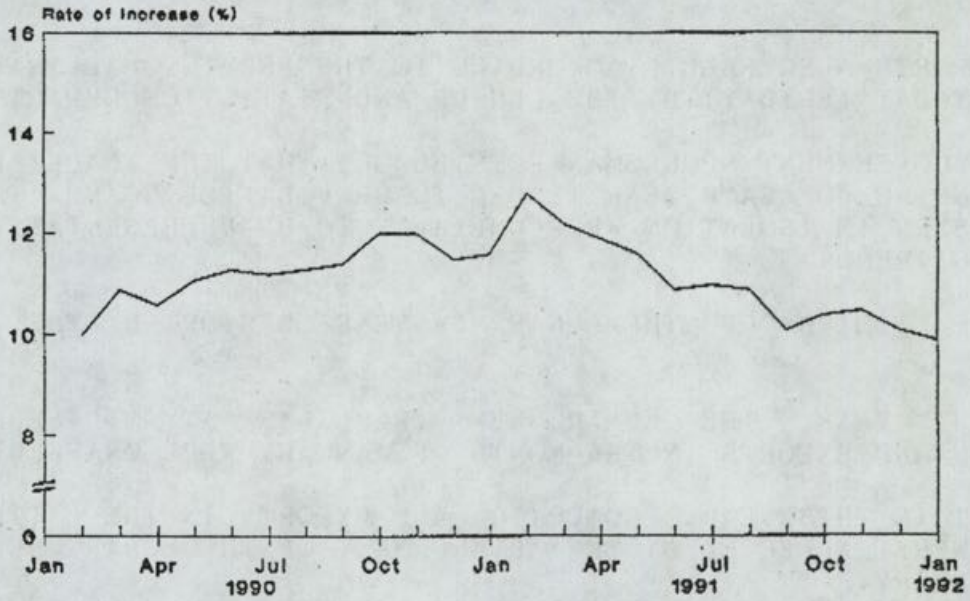
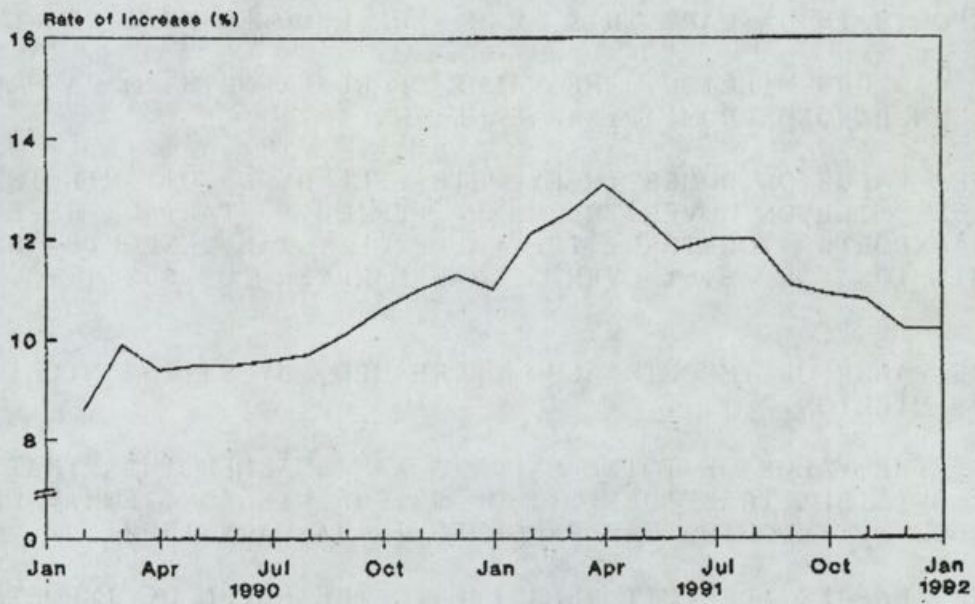


Chart 4 Year-on-year Rates of Increase in Composite CPI



FRIDAY, FEBRUARY 28, 1992

- 10 -

PROVISIONAL TRADE FIGURES FOR JANUARY 1992

* * * * *

DUE TO THE INFLUENCE OF CERTAIN SPECIAL FACTORS FOR THE MONTH OF JANUARY THIS YEAR, RE-EXPORTS SHOWED NO INCREASE WHILE DOMESTIC EXPORTS DECLINED MARKEDLY WHEN COMPARED WITH JANUARY LAST YEAR.

IMPORTS ALSO FELL, ACCORDING TO THE PROVISIONAL TRADE FIGURES RELEASED TODAY (FRIDAY) BY THE CENSUS AND STATISTICS DEPARTMENT.

A GOVERNMENT SPOKESMAN POINTED OUT THAT THE TRADE FIGURES AT THE BEGINNING OF EACH YEAR TENDED TO BE VOLATILE, AND THE JANUARY FIGURES SEEN IN ISOLATION WERE UNLIKELY TO BE REPRESENTATIVE OF THE UNDERLYING TREND.

THE TIMING OF THE LUNAR NEW YEAR DISTORTED THE COMPARISON SOMEWHAT.

LAST YEAR, THE LUNAR NEW YEAR WAS AT MID-FEBRUARY, AND PRODUCTION AND EXPORTS IN THE MONTH OF JANUARY WERE UNAFFECTED.

BUT IN THIS YEAR, PRODUCTION AND EXPORTS IN THE LATTER PART OF JANUARY WERE AFFECTED BY THE ADVANCEMENT OF THE LUNAR NEW YEAR TO EARLY FEBRUARY.

ADDITIONALLY, THERE WAS AN UPSURGE IN SHIPMENTS IN DECEMBER LAST YEAR AS EXPORTERS STRIVED TO ADVANCE THEIR DELIVERIES TO THE UNITED STATES IN ORDER TO AVOID BEING HIT BY ANY POSSIBLE U.S. SPECIAL 301 ACTION ON CHINA.

EXPORTS IN JANUARY THIS YEAR WERE REDUCED AS A RESULT.

AT \$39,009 MILLION, THE VALUE OF RE-EXPORTS IN JANUARY 1992 WAS VIRTUALLY UNCHANGED FROM A YEAR EARLIER.

THE VALUE OF DOMESTIC EXPORTS FELL BY \$5,011 MILLION OR 26.1% TO \$14,165 MILLION OVER THE SAME PERIOD. TAKING RE-EXPORTS AND DOMESTIC EXPORTS TOGETHER, THE VALUE OF TOTAL EXPORTS DECLINED BY \$5,023 MILLION OR 8.6% OVER A YEAR EARLIER TO \$53,174 MILLION IN JANUARY.

THE VALUE OF IMPORTS ALSO DECREASED, BY \$4,752 MILLION OR 7.8% TO \$55,909 MILLION.

AS THE VALUE OF TOTAL EXPORTS WAS SMALLER THAN THAT OF TOTAL IMPORTS, A VISIBLE TRADE DEFICIT OF \$2,735 MILLION, EQUIVALENT TO 4.9% OF THE VALUE OF IMPORTS, WAS RECORDED IN JANUARY 1992.

THE LARGER DEFICIT RELATIVE TO THE LEVEL OF IMPORTS FOR THE MONTH OF JANUARY WAS LARGELY SEASONAL.

AS A COMPARISON, THE DEFICIT RECORDED IN JANUARY 1991 WAS \$2,464 MILLION, EQUIVALENT TO 4.1% OF THE VALUE OF IMPORTS.

/IN VIEW

IN VIEW OF THE VOLATILITY IN THE JANUARY FIGURES, IT IS USEFUL TO MAKE COMPARISONS OVER A LONGER PERIOD.

THE VALUE OF TOTAL EXPORTS IN THE 12 MONTHS ENDING JANUARY 1992 AMOUNTED TO \$760,863 MILLION, MADE UP OF RE-EXPORTS OF \$534,829 MILLION AND DOMESTIC EXPORTS OF \$226,034 MILLION.

COMPARED WITH THE PRECEDING 12 MONTHS, THE VALUE OF RE-EXPORTS ROSE BY \$109,770 MILLION OR 25.8% WHILE THAT OF DOMESTIC EXPORTS DECREASED BY \$2,380 MILLION OR 1%.

THE VALUE OF TOTAL EXPORTS THUS INCREASED BY \$107,390 MILLION OR 16.4%. THE VALUE OF IMPORTS ROSE BY \$112,130 MILLION OR 16.9% TO \$774,230 MILLION.

A VISIBLE TRADE DEFICIT OF \$13,367 MILLION, EQUIVALENT TO 1.7% OF THE VALUE OF IMPORTS, WAS RECORDED IN THE 12 MONTHS ENDING JANUARY 1992.

THE DEFICIT RECORDED IN THE PRECEDING 12 MONTHS ENDING JANUARY 1991 WAS \$8,627 MILLION, EQUIVALENT TO 1.3% OF THE VALUE OF IMPORTS.

THE FOLLOWING TABLE PRESENTS THE PROVISIONAL TRADE FIGURES FOR JANUARY 1992:

THE CENSUS AND STATISTICS DEPARTMENT HAS RELEASED THE FOLLOWING PROVISIONAL MERCHANDISE TRADE FIGURES FOR JANUARY:-

MERCHANDISE: DOMESTIC EXPORTS :	\$14,165 MILLION	
RE-EXPORTS :	\$39,009 MILLION	
TOTAL EXPORTS :	\$53,174 MILLION	
IMPORTS :	\$55,909 MILLION	
TRADE BALANCE :	\$2,735 MILLION	(IN DEFICIT)

COMPARATIVE FIGURES

LATEST 3 MONTHS	NOV 91 TO	NOV 90 TO	INCREASE	
	JAN 92	JAN 91	HK\$ MN.	%
	HK\$ MN.	HK\$ MN.		
DOMESTIC EXPORTS	56,921	61,266	-4,345	-7.1
RE-EXPORTS	143,795	118,487	25,308	21.4
TOTAL EXPORTS	200,716	179,753	20,963	11.7
IMPORTS	203,598	184,115	19,483	10.6
TRADE BALANCE	-2,882	-4,362	1,480	

SAME MONTH LAST YEAR	JANUARY	JANUARY	INCREASE	
	1992	1991	HK\$ MN.	%
	HK\$ MN.	HK\$ MN.		
DOMESTIC EXPORTS	14,165	19,176	-5,011	-26.1
(% OF TOTAL EXPORTS)	(26.6%)	(33.0%)		
RE-EXPORTS	39,009	39,021	-12	0.0
TOTAL EXPORTS	53,174	58,197	-5,023	-8.6
IMPORTS	55,909	60,661	-4,752	-7.8
TRADE BALANCE	-2,735	-2,464	-271	

/LAST MONTH

- 12 -

LAST MONTH	JANUARY	DECEMBER	INCREASE	
	1992	1991	HK\$ MN.	%
	HK\$ MN.	HK\$ MN.		
DOMESTIC EXPORTS	14,165	22,299	-8,134	-36.5
(% OF TOTAL EXPORTS)	(26.6%)	(29.8%)		
RE-EXPORTS	39,009	52,487	-13,478	-25.7
TOTAL EXPORTS	53,174	74,786	-21,612	-28.9
IMPORTS	55,909	76,974	-21,065	-27.4
TRADE BALANCE	-2,735	-2,188	-547	

LAST 12 MONTHS	FEB 91 TO	FEB 90 TO	INCREASE	
	JAN 92	JAN 91	HK\$ MN.	%
	HK\$ MN.	HK\$ MN.		
DOMESTIC EXPORTS	226,034	228,414	-2,380	-1.0
RE-EXPORTS	534,829	425,059	109,770	25.8
TOTAL EXPORTS	760,863	653,473	107,390	16.4
IMPORTS	774,230	662,100	112,130	16.9
TRADE BALANCE	-13,367	-8,627	-4,740	

- - - - 0 - - - -

BANKRUPTCY (AMENDMENT) BILL 1992 GAZETTED

* * * * *

THE BANKRUPTCY (AMENDMENT) BILL 1992 WHICH SEEKS TO PROVIDE A LEGAL BASIS FOR THE ESTABLISHMENT OF THE OFFICIAL RECEIVER'S OFFICE (ORO) AS A SEPARATE DEPARTMENT, IS GAZETTED TODAY (FRIDAY).

THE INSOLVENCY DIVISION OF THE REGISTRAR GENERAL'S DEPARTMENT (RGD) IS PRESENTLY CHARGED WITH THE FULL RESPONSIBILITY FOR INSOLVENCY MATTERS UNDER THE BANKRUPTCY ORDINANCE AND FOR THE COMPULSORY WINDING-UP OF COMPANIES UNDER THE COMPANIES ORDINANCE.

"AS PART OF THE REORGANISATION PROGRAMME OF THE RGD, AND IN ORDER TO ALLOW MORE EFFECTIVE MANAGEMENT, IT HAS BEEN DECIDED THAT THIS DIVISION SHOULD BE ESTABLISHED AS A SEPARATE LEGAL ENTITY," A GOVERNMENT SPOKESMAN SAID.

"THE REORGANISATION WILL IMPROVE EFFICIENCY THROUGH THE INTRODUCTION OF A NEW GRADE OF INSOLVENCY OFFICERS, WHO WILL BE RESPONSIBLE FOR THE OVERALL MANAGEMENT OF INDIVIDUAL CASES, AND THROUGH GREATER SPECIALISATION BY LEGAL OFFICERS," HE SAID.

"THE NEW OFFICE, WHICH WILL BE HEADED BY THE OFFICIAL RECEIVER (OR), IS TENTATIVELY SCHEDULED TO BEGIN OPERATIONS ON JUNE 1 THIS YEAR," THE SPOKESMAN SAID.

THE BANKRUPTCY ORDINANCE IS THE PRINCIPAL LEGISLATION GOVERNING THE OPERATION OF THE ORO.

"SECTIONS 75 AND 76 PROVIDE FOR THE APPOINTMENT OF AN OFFICIAL RECEIVER BY THE GOVERNOR AND DEFINE HIS POWERS AND STATUS," THE SPOKESMAN SAID.

"IN ORDER THAT THE NEW OR CAN DISCHARGE HIS DUTIES EFFECTIVELY FOLLOWING ESTABLISHMENT OF THE NEW OFFICE, THE ORDINANCE NEEDS TO BE AMENDED TO ENABLE HIM TO DELEGATE HIS POWERS TO CERTAIN SPECIFIED OFFICERS WHO CAN ACT ON HIS BEHALF AND CARRY OUT HIS STATUTORY FUNCTIONS AS RECEIVER AND TRUSTEE OF THE ESTATE OF DEBTORS," HE SAID.

THE SPECIFIED OFFICERS MAY ALSO REPRESENT THE OR IN THE SUPREME COURT IN HEARINGS ON PETITIONS OR CIVIL LITIGATION PROCEEDINGS, AND CONDUCT PROSECUTIONS RELATING TO INSOLVENCY OFFENCES IN THE MAGISTRATE COURTS.

THE PROPOSED SECTION 75(3), THEREFORE, REQUIRES THE RELEVANT OFFICERS TO BE LEGALLY QUALIFIED. THEY ALSO NEED TO BE AUTHORISED TO TAKE AFFIDAVITS.

"TRANSITIONAL PROVISIONS ARE INCLUDED TO ENSURE CONTINUITY AND CERTAINTY REGARDING ACTIONS TAKEN RESPECTIVELY BY OFFICERS OF RGD AND ORO IMMEDIATELY BEFORE AND AFTER THE DATE OF TRANSFER OF FUNCTIONS," THE SPOKESMAN ADDED.

"CLAUSES 7 TO 13 OF THE BILL CONTAIN AMENDMENTS TO OTHER LEGISLATION CONSEQUENT UPON THE ESTABLISHMENT OF THE ORO AND THE CESSATION OF RG'S RESPONSIBILITY AS OR," HE SAID.

THE ESTABLISHMENT OF THE NEW DEPARTMENT WILL NOT ENTAIL ANY SIGNIFICANT CHANGES IN STATUTORY PROCEDURES OR COSTS, AND THE NEW ORO WILL RETAIN THE PREMISES CURRENTLY USED BY THE INSOLVENCY DIVISION OF THE RGD.

- - - - 0 - - - -

INLAND REVENUE (AMENDMENT)(NO. 2) BILL 1992

* * * * *

A BILL WHICH PROPOSES TO EXEMPT FROM TAX THE PROFITS FROM CARRIAGE OF PASSENGERS AND FREIGHT FROM HONG KONG EARNED BY OWNERS OF OCEAN-GOING SHIPS REGISTERED IN HONG KONG, IS GAZETTED TODAY (FRIDAY).

THE EXEMPTION WOULD ALSO APPLY TO CHARTER HIRE RECEIVED BY ALL OCEAN-GOING SHIPS, IRRESPECTIVE OF THEIR PLACE OF REGISTRATION.

"THE AMENDMENTS CONTAINED IN THE INLAND REVENUE (AMENDMENT) (NO. 2) BILL 1992 ARE INTENDED TO ENCOURAGE SHIPOWNERS TO REGISTER THEIR SHIPS ON HONG KONG'S SHIPPING REGISTER. THEY WOULD REMOVE TAX DISINCENTIVES TO THE DEVELOPMENT OF HONG KONG AS A SHIPPING MANAGEMENT CENTRE," A GOVERNMENT SPOKESMAN SAID.

/"WITH THE

- 14 -

"WITH THE AMENDMENTS, OUR SHIPPING TAXATION POLICY WOULD BE COMPETITIVE WITH THAT IN OTHER MAJOR WORLD SHIP REGISTRATION CENTRES, WHICH DO NOT CHARGE TAX ON PROFITS MADE BY OWNERS OF SHIPS REGISTERED WITH THEM," HE EXPLAINED.

"THE COST TO REVENUE OF THE EXEMPTIONS WOULD BE SOME \$28 MILLION. HOWEVER, WE EXPECT THE LOSS TO BE MADE UP BY THE REGISTRATION AND TONNAGE FEES PAYABLE BY NEW SHIPS ATTRACTED ONTO THE HONG KONG REGISTER. THERE WOULD ALSO BE SIGNIFICANT INDIRECT BENEFITS TO THE BANKING, INSURANCE AND OTHER SHIPPING-RELATED SECTORS OF THE ECONOMY," THE SPOKESMAN SAID.

"IF THE BILL IS ENACTED, THE PROVISIONS RELATING TO THE TAX EXEMPTIONS WILL COME INTO FORCE RETROACTIVELY WITH EFFECT FROM DECEMBER 3, 1990, WHEN THE NEW HONG KONG SHIPPING REGISTER WAS ESTABLISHED," HE SAID.

- - - - 0 - - - -

PAC TO RECONVENE HEARING ON UNIVERSITY FINANCES

* * * * *

THE PUBLIC ACCOUNTS COMMITTEE WILL RECONVENE THE PUBLIC HEARING ON "PLANNING AND FINANCIAL CONTROL BY THE GOVERNMENT ON BUILDING THE HONG KONG UNIVERSITY OF SCIENCE AND TECHNOLOGY" ON MONDAY (MARCH 2) IN THE LEGISLATIVE COUNCIL CHAMBER, BEGINNING AT 9.30 AM.

INVITED TO THE HEARING WILL BE CHIEF SECRETARY SIR DAVID FORD, ADMINISTRATIVE ASSISTANCE TO CHIEF SECRETARY MS EMMA LAU, SIR GORDON MACWHINNIE, MAJOR GENERAL GUY WATKINS, SIR S.Y. CHUNG, MR I.F.C. MACPHERSON, SECRETARY FOR EDUCATION AND MANPOWER MR JOHN CHAN, DEPUTY SECRETARY FOR EDUCATION AND MANPOWER MISS CHRISTINE CHOW, MR K.Y. YEUNG, MR M. PAGLIARI, MR JOSE LEI AND DIRECTOR OF ARCHITECTURAL SERVICES MR P.J. CORSER.

MEMBERS OF THE PUBLIC ARE WELCOME TO RESERVE SEATS IN THE PUBLIC GALLERY OF THE LEGISLATIVE COUNCIL CHAMBER BY TELEPHONING 869 9492.

- - - - 0 - - - -

FRIDAY, FEBRUARY 28, 1992

- 15 -

NEW WATER CONTROL ZONE DECLARED

* * * * *

THE NORTH WESTERN PART OF THE HONG KONG'S WATERS WAS DECLARED A WATER CONTROL ZONE (WCZ) UNDER THE WATER POLLUTION CONTROL (NORTH WESTERN WATER CONTROL ZONE) ORDER GAZETTED TODAY (FRIDAY).

THE RELATED ORDER BY WHICH THE GOVERNOR APPOINTED THE RESPECTIVE DATES FOR THE CONTROLS TO TAKE EFFECT AND THE STATEMENT OF WATER QUALITY OBJECTIVES ESTABLISHED BY THE SECRETARY FOR PLANNING, ENVIRONMENT AND LANDS WERE ALSO GAZETTED.

"UNDER THE WATER POLLUTION CONTROL ORDINANCE, CONTROLS ON NEW DISCHARGES TAKE EFFECT FROM THE FIRST APPOINTED DAY ON APRIL 1," A GOVERNMENT SPOKESMAN SAID.

LICENCE APPLICATIONS COVERING EXISTING DISCHARGES SHOULD BE SUBMITTED BETWEEN THE FIRST APPOINTED DAY AND THE SECOND APPOINTED DAY ON OCTOBER 1.

THE WCZ IS THE SEVENTH OF ITS KIND DECLARED SO FAR UNDER THE WATER POLLUTION CONTROL ORDINANCE AFTER TOLO HARBOUR AND CHANNEL (COMMENCED ON APRIL 1987), SOUTHERN WATER (JULY 1988), PORT SHELTER AND JUNK BAY (JULY 1989), AND MIRS BAY AND DEEP BAY (DECEMBER 1990).

THE NORTH WESTERN WATER CONTROL ZONE INCLUDES BOTH INLAND AND MARINE WATER BODIES IN THE NORTHERN PART OF LANTAU AND EXTENDS TO THE MAINLAND TO COVER TUEN MUN DISTRICT, INCLUDING THE COASTAL AREAS BETWEEN TAI LAM KOK TO LAN KOK TSUI.

ACCORDING TO THE WATER POLLUTION CONTROL (AMENDMENT) ORDINANCE WHICH BECAME EFFECTIVE ON DECEMBER 1, 1990, A PERSON WHO DISCHARGES ANY WASTE OR POLLUTING MATTER IN A WCZ COMMITS AN OFFENCE AND IS LIABLE TO PROSECUTION BY THE DIRECTOR OF ENVIRONMENTAL PROTECTION.

THE SPOKESMAN SAID ENFORCEMENT PRIORITY WOULD BE DIRECTED AGAINST THOSE DISCHARGES THAT HAVE CAUSED SERIOUS IMPACT ON THE ENVIRONMENT.

"DISCHARGERS SHOULD THEREFORE OBTAIN AND COMPLY WITH A LICENCE GRANTED BY THE DIRECTOR OF ENVIRONMENTAL PROTECTION UNDER THE ORDINANCE WHICH IS THE ONLY CERTAIN WAY OF AVOIDING PROSECUTION," HE ADDED.

- - - - 0 - - - -

FRIDAY, FEBRUARY 28, 1992

- 16 -

TENDER INVITATION FOR WESTERN HARBOUR CROSSING FRANCHISE

* * * * *

THE GOVERNMENT IS INVITING THE PRIVATE SECTOR TO TENDER FOR THE WESTERN HARBOUR CROSSING FRANCHISE ON THE BASIS OF A "BUILD, OPERATE AND TRANSFER" ARRANGEMENT.

"THE WESTERN HARBOUR CROSSING IS ONE OF THE KEY PROJECTS UNDER THE AIRPORT CORE PROGRAMME WHICH AIMS AT PROVIDING A THIRD ROAD CROSSING CONNECTING WEST KOWLOON AND THE WESTERN DISTRICT OF HONG KONG ISLAND BY MID 1997," A GOVERNMENT SPOKESMAN SAID TODAY (FRIDAY).

TENDERS WILL BE REQUIRED TO BE SUBMITTED ON THE BASIS OF A PROJECT BRIEF. A BOOKLET CONTAINING INFORMATION ON THE PROJECT, TENDERING REQUIREMENTS, AND GUIDANCE FOR COLLECTION OF THE PROJECT BRIEF IS OBTAINABLE FROM THE TRANSPORT BRANCH, GOVERNMENT SECRETARIAT.

INTERESTED PARTIES SHOULD PRODUCE A COMPANY LETTER IN ORDER TO COLLECT THE BOOKLET.

THE PROJECT BRIEF WILL BE READY FOR COLLECTION FROM MARCH 6 BY PARTIES WHICH HAVE COMPLIED WITH TENDER DEPOSIT REQUIREMENTS. TENDER WILL CLOSE ON JULY 3 THIS YEAR.

- - - - 0 - - - -

STUDY TO EXPLORE PORT DEVELOPMENT AT TSEUNG KWAN O

* * * * *

THE GOVERNMENT TODAY (FRIDAY) COMMISSIONED A CONSULTANCY STUDY ON THE ENGINEERING FEASIBILITY OF THE DEVELOPMENT OF THE SOUTHEASTERN PART OF TSEUNG KWAN O AS A BASE FOR DEEP WATERFRONT INDUSTRIES.

THE \$5.2 MILLION STUDY WAS INITIATED AS PART OF THE PORT AND AIRPORT STRATEGY TO PROVIDE PORT FACILITIES IN TSEUNG KWAN O.

IT WILL BE CARRIED OUT IN AREA 137 OF THE NEW TOWN WHICH IS LOCATED TO THE SOUTHEAST OF FAT TONG CHAU STRETCHING ALONG THE COASTAL AREA FROM SHEK MUI WAN AND THE PROPOSED TSEUNG KWAN O INDUSTRIAL ESTATE IN THE NORTH TO TIT CHAM CHAU IN THE SOUTH.

UNDER THE GOVERNMENT PLAN, THE AREA IS TO BE RECLAIMED TO PROVIDE 120 HECTARES OF LAND FOR DEEP WATERFRONT INDUSTRIES OF WHICH 20 HECTARES ARE FOR POTENTIALLY HAZARDOUS INSTALLATIONS.

THE FEASIBILITY STUDY WILL ASSESS DETAILED ENGINEERING FEASIBILITY OF THE PROPOSALS, WHICH INCLUDES ENVIRONMENTAL, MARITIME AND TRAFFIC IMPACTS OF THE PROPOSED DEVELOPMENT AND THE EXTENT TO WHICH CONSTRAINTS OR ABATEMENT MEASURES MAY NEED TO BE APPLIED.

/THE NEED

THE NEED TO MAKE ANY ADJUSTMENT TO EXISTING LAND USE PLANS IN TSEUNG KWAN O AND THE SERVICES REQUIRED WILL ALSO BE EXAMINED.

AN IMPLEMENTATION PROGRAMME WILL THEN BE PREPARED WITH FORECASTS ON THE ANTICIPATED REVENUE AND EXPENDITURE.

THE RECOMMENDATION FOR AN OPTIMUM ALIGNMENT FOR THE CONNECTION OF A PROPOSED WESTERN COAST ROAD IN TSEUNG KWAN O TO EAST KOWLOON ALSO CONSTITUTES A MAIN ISSUE OF THE STUDY.

ON COMPLETION, THE STUDY REPORT WILL PROVIDE DETAILED LAYOUT PLANS TO ALLOW PROGRESSION TO DETAILED PLANNING AND ENGINEERING DESIGN OF THE DEVELOPMENT.

THE AGREEMENT ON THE STUDY, WHICH IS EXPECTED TO BE COMPLETED IN FEBRUARY NEXT YEAR, WAS SIGNED BY THE TERRITORY DEVELOPMENT DEPARTMENT'S PROJECT MANAGER OF THE SOUTHEAST NEW TERRITORIES DEVELOPMENT OFFICE, DR. CHOI YU-LUK ON BEHALF OF THE GOVERNMENT, WITH REPRESENTATIVES OF A JOINT CONSULTING FIRM.

- - - - 0 - - - -

RECLAMATION TO BE CARRIED OUT AT TSEUNG KWAN O

* * * * *

THE GOVERNMENT INTENDS TO CARRY OUT RECLAMATION AT SIU CHIK SHA, TSEUNG KWAN O, TO PROVIDE LAND FOR THE EXTENSION OF THE TSEUNG KWAN O LANDFILL.

THE RECLAMATION, TO BE CARRIED OUT WITHIN AN AREA OF ABOUT 18.9 HECTARES OF FORESHORE AND SEA-BED OF THE AREA, WILL ENABLE THE TIPPING OF ADDITIONAL QUANTITIES OF SOLID WASTE AT THE LANDFILL.

THE WORKS WILL ALSO COMPRISE THE CONSTRUCTION OF AN 840-METRE SEAWALL.

WORKS ARE SCHEDULED TO START IN SEPTEMBER THIS YEAR AND BE COMPLETED BY FEBRUARY 1994.

ANY PERSON WHO CONSIDERS THAT HE HAS AN INTEREST, RIGHT OR EASEMENT IN OR OVER THE FORESHORE AND SEA-BED MAY SUBMIT A WRITTEN OBJECTION TO THE DIRECTOR OF BUILDINGS AND LANDS ON OR BEFORE APRIL 27, THIS YEAR.

MEANWHILE, THE GOVERNMENT HAS BEEN AUTHORISED TO PERMIT BAYNARD LIMITED, OWNER OF TUEN MUN TOWN LOT 238, TO LAY A SEWER OF 250 MILLIMETRES IN DIAMETER WITHIN AN AREA OF ABOUT 520 SQUARE METRES OF FORESHORE AND SEA-BED BETWEEN BEAULIEU PENINSULA AND PEARL ISLAND TO DISCHARGE TREATED EFFLUENT FROM THE LOT.

ALL WRITTEN CLAIMS FOR COMPENSATION SHOULD REACH THE DIRECTOR OF BUILDINGS AND LANDS ON OR BEFORE FEBRUARY 27, NEXT YEAR.

NOTICES DESCRIBING THE EXTENT OF THE AREAS AFFECTED WERE GAZETTED TODAY (FRIDAY).

- - - - 0 - - - -

FRIDAY, FEBRUARY 28, 1992

- 18 -

TENDERS FOR WESTERN WHOLESALE MARKET PHASE-2

* * * * *

THE ARCHITECTURAL SERVICES DEPARTMENT IS INVITING TENDERS FOR THE CONSTRUCTION OF THE WESTERN WHOLESALE MARKET, PHASE-2 IN KENNEDY TOWN.

A NOTICE OF TENDER WAS GAZETTED TODAY (FRIDAY).

WORKS UNDER THE CONTRACT WILL INCLUDE THE CONSTRUCTION OF THE VEGETABLE AND POULTRY WHOLESALE MARKETS AND THE INSTALLATION OF MECHANICAL LIFTING EQUIPMENT ON THE TWO PIERS TO SERVE THE MARKET.

WORKS ARE EXPECTED TO START IN JUNE AND BE COMPLETED BY JANUARY 1994.

FORMS OF TENDER AND FURTHER PARTICULARS MAY BE OBTAINED FROM THE ARCHITECTURAL SERVICES DEPARTMENT, 34TH FLOOR, QUEENSWAY GOVERNMENT OFFICES, 66 QUEENSWAY HONG KONG.

DEADLINE FOR SUBMISSION IS NOON, MARCH 27.

- - - - 0 - - - -

TENDERS INVITED FOR WORKS ON HOSPITAL FACILITIES

* * * * *

THE ARCHITECTURAL SERVICES DEPARTMENT IS INVITING TENDERS FOR A NUMBER OF EXPANSION AND REPROVISIONING WORKS FOR THE PRINCE OF WALES HOSPITAL IN SHA TIN, TO COPE WITH THE RAPID POPULATION GROWTH IN THE NEW TERRITORIES EAST REGION.

THE CONTRACT WILL INVOLVE THE EXPANSION OF THE DELIVERY SUITE OF THE HOSPITAL WITH ONE ADDITIONAL OPERATING THEATRE, LABOUR ROOMS AND A NEW WARD; THE REPROVISIONING OF THE OFFICE OF THE OBSTETRICS AND GYNAECOLOGY DEPARTMENT AS WELL AS THE CONSTRUCTION OF A TEMPORARY OPERATING THEATRE.

WORKS ON THE CONTRACT ARE EXPECTED TO START IN MAY AND WILL TAKE ABOUT A YEAR TO COMPLETE.

MEANWHILE, TENDERS ARE ALSO INVITED FOR ANOTHER PROJECT IN THE NEW TERRITORIES WHICH INVOLVES THE CONSTRUCTION OF AN X-RAY UNIT FOR ACCIDENT AND EMERGENCY SERVICES AT THE TAI PO JOCKEY CLUB CLINIC.

FORMS OF TENDER AND FURTHER PARTICULARS OF THE TWO PROJECTS MAY BE OBTAINED FROM THE ARCHITECTURAL SERVICES DEPARTMENT, 34TH FLOOR, QUEENSWAY GOVERNMENT OFFICES, 66 QUEENSWAY HONG KONG.

THE DEADLINE FOR SUBMITTING TENDERS IS NOON, MARCH 20.

- - - - 0 - - - -

OPERATION TO WEED OUT DANGEROUS STRUCTURES

* * * * *

THE PRINCIPAL GOVERNMENT BUILDING SURVEYOR OF THE BUILDINGS AND LANDS DEPARTMENT, MR ANTHONY SAMSON, TODAY (FRIDAY) VISITED FOUR BUILDINGS IN MONG KOK TO SEE FOR HIMSELF THE IMPLEMENTATION OF "OPERATION CATHERINE WHEEL" - AN INITIATIVE OF THE BUILDINGS ORDINANCE OFFICE (BOO) AIMED AT WEEDING OUT DANGEROUS STRUCTURES THROUGH THE USE OF ADVISORY LETTERS.

DURING THE OPERATION, BOO STAFF DELIVERED 364 ADVISORY LETTERS TO FLAT OWNERS AND OCCUPIERS IN THE FOUR BUILDINGS URGING THEM TO VOLUNTARILY REMOVE DANGEROUS PROJECTIONS SUCH AS CANOPIES, CAGES AND FLOWER RACKS FROM THEIR PREMISES.

THE FOUR BUILDINGS ARE AMONG A BATCH OF 52 TARGETED IN THE OPERATION WHICH WAS LAUNCHED IN NOVEMBER LAST YEAR FOLLOWING THE SUCCESS OF "OPERATION APPENDAGES" - AN ENFORCEMENT OPERATION MOUNTED TO CRACK DOWN ON DANGEROUS STRUCTURES BY ISSUING REMOVAL ORDERS.

MR SAMSON, WHO HEADS THE BOO, SAID THE MAIN PURPOSE OF THE LATEST OPERATION WAS AGAIN TO MAKE BUILDINGS SAFER, NOT ONLY FOR THE RESIDENTS BUT ALSO FOR THE GENERAL PUBLIC, NOTING THAT MOST OF THE DANGEROUS PROJECTIONS WERE ABOVE CROWDED STREETS.

HE SAID THE HIGH PERCENTAGE OF VOLUNTARY COMPLIANCE UNDER "OPERATION APPENDAGES" HAD CLEARLY INDICATED THAT THE MAJORITY OF BUILDING OWNERS AND RESIDENTS WISHED TO KEEP THEIR BUILDINGS SAFE.

"OPERATION CATHERINE WHEEL" IS THEREFORE DESIGNED TO SPEED UP THE REMOVAL PROCESS BY TAKING FULL ADVANTAGE OF THE PRESENT MOOD OF THE COMMUNITY WHO ARE PROVING VERY SUPPORTIVE OF OUR PRESENT ACTIONS.

"THEREFORE, INSTEAD OF ISSUING REMOVAL ORDERS TO THE OWNERS CONCERNED, ADVISORY LETTERS ARE BEING SENT IN THE FIRST INSTANCE, ASKING FOR VOLUNTARY REMOVAL OF ALL DANGEROUS STRUCTURES.

"AT THE SAME TIME, OWNERS' CORPORATIONS AND MUTUAL AID COMMITTEES WILL BE ASKED TO THROW THEIR WEIGHT BEHIND THE OPERATION AND TO HELP MOBILISE THE OWNERS AND OCCUPANTS.

"IN THE CASE OF THOSE WHO DO NOT RESPOND TO THE ADVISORY LETTERS, REMOVAL ORDERS WILL BE SERVED ON THEM, AND THE UNAUTHORISED BUILDING WORKS WILL BE REMOVED BY GOVERNMENT CONTRACTORS IF NECESSARY," HE SAID.

THE GOVERNMENT WILL LATER RECOUP THE COSTS INCURRED IN THE REMOVAL FROM THE OWNERS.

HOWEVER, MR SAMSON POINTED OUT THAT SO FAR THE RESPONSE FROM THOSE OWNERS AND OCCUPIERS OF THE TARGETED BUILDINGS WHO HAD ALREADY RECEIVED THE ADVISORY LETTERS HAD BEEN VERY ENCOURAGING. IF THIS CO-OPERATION CONTINUED, CASES REQUIRING ENFORCEMENT ACTION WOULD BE MINIMAL.

/HE SAID

FRIDAY, FEBRUARY 28, 1992

- 20 -

HE SAID INSPECTIONS BY STAFF OF BOO HAD LOCATED SOME 11,150 UNAUTHORISED BUILDING WORKS IN 6,730 FLATS IN THE 52 BUILDINGS TARGETED IN THE LATEST OPERATION, WHICH WERE GENERALLY IN CLOSE PROXIMITY TO THOSE BUILDINGS COVERED BY "OPERATION APPENDAGES".

THE FOUR BUILDINGS COVERED BY TODAY'S OPERATION WERE YUET YUEN MANSION AT 17-19 MONG KOK ROAD, CHEUNG HING MANSION AT 15 CHEUNG WONG ROAD, TAK LEE MANSION AT 1-5 ARGYLE STREET AND KAI WAN MANSION AT 7-13 ARGYLE STREET.

- - - - 0 - - - -

TENDERS FOR EXTENSION WORKS ON LION ROCK TUNNEL
ADMINISTRATION BLOCK

* * * * *

THE ARCHITECTURAL SERVICES DEPARTMENT IS INVITING TENDERS FOR THE EXTENSION WORKS TO THE LION ROCK TUNNEL ADMINISTRATION BUILDING AT SHA TIN, NEW TERRITORIES.

THE PROJECT WILL PROVIDE ADDITIONAL OFFICE ACCOMMODATION TO THE EXISTING LION ROCK TUNNEL ADMINISTRATION BUILDING TO MEET THE OPERATIONAL NEEDS ARISING FROM THE INCREASING TRAFFIC FLOW THROUGH THE TUNNEL.

THE WORKS WILL INVOLVE THE CONSTRUCTION OF AN ADDITIONAL FLOOR AREA OF ABOUT 200 SQUARE METRES WITH ACCOMMODATION FOR GENERAL OFFICE, ACCOUNTS OFFICE, TOLL-RECORDER ROOM, LOCKER ROOMS, CANTEEN AND KITCHEN.

IT WILL ALSO PROVIDE ACCOMMODATION FOR MAINTENANCE STAFF STATIONED THERE.

THE PROJECT IS EXPECTED TO BEGIN IN MAY AND BE COMPLETED IN SEVEN MONTHS.

THE CLOSING DATE FOR SUBMISSION OF TENDERS IS NOON, MARCH 20.

FORMS OF TENDER AND FURTHER PARTICULARS MAY BE OBTAINED FROM THE ARCHITECTURAL SERVICES DEPARTMENT, 34TH FLOOR, QUEENSWAY GOVERNMENT OFFICES, 66 QUEENSWAY HONG KONG.

- - - - 0 - - - -

UNAUTHORISED BUILDING WORKS TO BE CLOSED

* * * * *

THE BUILDING AUTHORITY IS SEEKING TO CLOSE A NUMBER OF UNAUTHORISED BUILDING WORKS SO THAT THEY CAN BE CLOSED WITHOUT DANGER TO THE OCCUPIERS AND THE PUBLIC.

THE UNAUTHORISED STRUCTURES ARE LOCATED AT THE ROOF OVER FLAT C, 22ND FLOOR OF NO. 29-33 SOARES AVENUE, MONG KOK, KOWLOON; THE ROOF OVER FLATS A, B, C, D, E, F AND G ON THE EIGHTH FLOOR OF NOS. 39-49 HANG ON STREET, KWUN TONG, KOWLOON; AND THE REAR LANE OF LUCKY HOUSE, AT NO. 17-21 BURROWS STREET, NO. 149 WAN CHAI ROAD AND NO. 11 CROSS LANE, WAI CHAI, HONG KONG.

NOTICES OF INTENTION TO APPLY FOR CLOSURE ORDERS UNDER THE BUILDINGS ORDINANCE FROM THE HONG KONG DISTRICT COURT ON APRIL 29, MAY 26 AND JUNE 11 RESPECTIVELY WERE POSTED ON THE PREMISES TODAY (FRIDAY).

IT IS EXPECTED THAT DEMOLITION WORKS WILL START AS SOON AS THE CLOSURE ORDERS ARE ISSUED.

- - - - 0 - - - -

1991 POPULATION CENSUS DATA CREMATED

* * * * *

QUESTIONNAIRES CONTAINING DATA ON INDIVIDUAL PERSONS, HOUSEHOLDS AND LIVING QUARTERS COLLECTED IN THE 1991 POPULATION CENSUS WERE BURNT THIS (FRIDAY) MORNING AT THE KENNEDY TOWN INCINERATOR UNDER THE CLOSE SUPERVISION OF STAFF OF THE CENSUS AND STATISTICS DEPARTMENT.

THE POPULATION CENSUS WAS CONDUCTED IN MID MARCH 1991.

A SPOKESMAN FOR THE DEPARTMENT EXPLAINED THAT UNDER THE CENSUS AND STATISTICS ORDINANCE, DATA ON INDIVIDUAL PERSONS, HOUSEHOLDS AND LIVING QUARTERS OBTAINED FROM THE 1991 POPULATION CENSUS MUST BE TREATED IN STRICT CONFIDENCE AND ALL QUESTIONNAIRES CONTAINING SUCH INFORMATION MUST BE DESTROYED WITHIN ONE YEAR AFTER THE CENSUS.

HE STRESSED THAT AT ALL STAGES OF THE CENSUS OPERATION, STEPS WERE TAKEN TO ENSURE THAT CONFIDENTIALITY OF THE DATA WAS STRICTLY MAINTAINED.

"OTHER THAN THOSE DIRECTLY INVOLVED IN THE CENSUS OPERATION, NO ONE WITHIN OR OUTSIDE THE DEPARTMENT CAN HAVE ACCESS TO DATA ON INDIVIDUAL PERSONS, HOUSEHOLDS OR LIVING QUARTERS. ALL CENSUS OFFICERS ARE UNDER AN OATH OF SECRECY NOT TO DISCLOSE SUCH INFORMATION.

"QUESTIONNAIRES COMPLETED IN THE CENSUS WERE DESTROYED IN ORDER TO DISPEL ANY POSSIBLE ANXIETY WHICH THE PUBLIC MIGHT HAVE OVER THEIR FUTURE USE," HE SAID.

ANY IDENTIFICATIONS OF ENUMERATED INDIVIDUAL PERSONS OR HOUSEHOLDS FROM THE QUESTIONNAIRES WERE NOT ENTERED INTO COMPUTER, THE SPOKESMAN ADDED.

- - - - 0 - - - -

120 VMS RETURN TO VIETNAM

* * * * *

A GROUP OF 120 VIETNAMESE MIGRANTS TODAY (FRIDAY) RETURNED TO VIETNAM UNDER THE UNHCR'S VOLUNTARY REPATRIATION PROGRAMME.

COMPRISING 56 MEN, 26 WOMEN, 21 BOYS AND 17 GIRLS, THEY WERE THE 92ND BATCH TO GO BACK UNDER THE PROGRAMME.

THIS GROUP BROUGHT TO 2,085 THE TOTAL NUMBER OF VIETNAMESE MIGRANTS WHO HAVE RETURNED VOLUNTARILY THIS YEAR, AND TO 16,064 THE TOTAL NUMBER OF RETURNEES SINCE THE PROGRAMME STARTED IN MARCH 1989.

- - - - 0 - - - -

PLACES AVAILABLE AT GOVERNMENT PRIMARY SCHOOLS

* * * * *

A NUMBER OF PLACES IN PRIMARY TWO TO SIX CLASSES WILL BE AVAILABLE FOR CHILDREN AT VARIOUS GOVERNMENT PRIMARY SCHOOLS IN THE NEXT ACADEMIC YEAR STARTING SEPTEMBER.

AN EDUCATION DEPARTMENT SPOKESMAN SAID CHILDREN AGED SIX YEARS AND EIGHT MONTHS OR OVER ON SEPTEMBER 1 THIS YEAR COULD APPLY FOR ADMISSION.

A NOTICE INDICATING THE PRIMARY TWO TO SIX VACANCIES WILL BE PUT UP AT THE MAIN ENTRANCE OF THESE SCHOOLS. APPLICATION FORMS WILL BE AVAILABLE FROM THESE SCHOOLS FROM MARCH 3 (TUESDAY) TO MARCH 10, EXCEPT SUNDAY.

THE SPOKESMAN ADVISED PARENTS TO RETURN THE COMPLETED FORMS TO THE SCHOOL OF THEIR CHOICE ON OR BEFORE MARCH 10.

SELECTION OF APPLICANTS WILL BE MADE ON MARCH 17.

"CHILDREN WILL NORMALLY BE ADMITTED TO SCHOOLS IN THE DISTRICT WHERE THEY LIVE," HE SAID.

"CONSIDERATION WILL ALSO BE TAKEN TO ENSURE CHILDREN FROM THE SAME FAMILY WILL NOT BE SEPARATED," HE ADDED.

APPLICATION FORMS ARE FREE AND NO ENTRANCE FEE IS CHARGED FOR ADMISSION TO GOVERNMENT SCHOOLS.

- - - - 0 - - - -

FRIDAY, FEBRUARY 28, 1992

- 23 -

WITHDRAWAL OF FERRY SERVICES FOR OUTLYING ISLANDS

* * * * *

THE TRANSPORT DEPARTMENT ANNOUNCED TODAY (FRIDAY) THAT THREE FERRY SERVICES FOR OUTLYING ISLANDS OPERATED BY THE HONG KONG AND YAUMATI FERRY COMPANY LTD WILL BE WITHDRAWN SHORTLY.

THE SAI WAN HO TO SAM KA TSUEN FERRY SERVICE WILL BE WITHDRAWN FROM SUNDAY (MARCH 1).

BOTH THE MA LIU SHUI TO TAP MUN (VIA SHAP SZE HEUNG, SHAM CHUNG, LAI CHI CHONG, TAI TAN, CHEK KENG AND KO LAU WAN) AND THE MA LIU SHUI TO PING CHAU (MIRS BAY) FERRY SERVICES WILL BE WITHDRAWN FROM MONDAY (MARCH 2).

REPLACEMENT LICENSED FERRY SERVICES USING SMALLER VESSELS WILL BE INTRODUCED AT THE SAME TIME TO SERVE FERRY PASSENGERS.

- - - - 0 - - - -

POSTMAN AWARDED IMPERIAL SERVICE MEDAL

* * * * *

A POSTMAN, MR SO YAU-CHAN, HAS BEEN AWARDED THE IMPERIAL SERVICE MEDAL BY HER MAJESTY THE QUEEN ON HIS RETIREMENT AFTER SERVING IN THE HONG KONG POST OFFICE FOR OVER 36 YEARS.

THE AWARD OF THE MEDAL TO MR SO WAS GAZETTED TODAY (FRIDAY).

MR SO, AGED 60, FOLLOWED THE FOOTSTEPS OF HIS FATHER, FORMERLY A POSTMAN, AND JOINED THE HONG KONG POST OFFICE IN 1954. HE WAS PROMOTED TO THE RANK OF POSTMAN IN 1957. HE WILL LEAVE THE SERVICE NEXT MONTH.

MR SO HAS UNDERTAKEN POSTAL DELIVERY WORK IN THE YAU MA TEI DISTRICT FOR MORE THAN 30 YEARS.

THE POSTMASTER GENERAL, MR DOMINIC S.W. WONG, SAID MR SO'S LONG SERVICE WAS MARKED BY LOYALTY, DILIGENCE AND EFFICIENCY.

"HIS POSITIVE COMMITMENT TO THE PROVISION OF QUALITY SERVICE TO THE PUBLIC HAS EARNED A GOOD REPUTATION FOR THE DEPARTMENT, AND HAS SET A WORTHY EXAMPLE FOR OTHER STAFF," MR WONG SAID.

MR SO RECEIVED WARM CONGRATULATIONS FROM THE GOVERNOR, LORD WILSON; THE POSTMASTER GENERAL, MR DOMINIC S.W. WONG, AND HIS COLLEAGUES.

- - - - 0 - - - -

FRIDAY, FEBRUARY 28, 1992

- 24 -

MAIN BUILDING OF ST STEPHEN'S GIRLS' COLLEGE
DECLARED MONUMENT

* * * * *

THE MAIN BUILDING OF ST STEPHEN'S GIRLS' COLLEGE AT NO. 2 LYTTTELTON ROAD, HONG KONG ISLAND WAS TODAY (FRIDAY) GAZETTED AS A HISTORICAL BUILDING UNDER THE ANTIQUITIES AND MONUMENTS ORDINANCE.

ST STEPHEN'S GIRLS' COLLEGE IS ONE OF THE FIRST SCHOOLS TO DEVOTE ITSELF TO THE EDUCATION OF GIRLS IN HONG KONG. MANY OF ITS STUDENTS BECAME PROMINENT MEMBERS OF THE LOCAL COMMUNITY, INCLUDING SOME OF THE FIRST FEMALE GRADUATES OF HONG KONG UNIVERSITY.

MANAGED BY THE CHURCH MISSIONARY SOCIETY, THE COLLEGE WAS ESTABLISHED AND SUPPORTED WITH THE HELP OF SUBSTANTIAL FINANCIAL CONTRIBUTIONS FROM THE LOCAL CHINESE COMMUNITY.

THE COLLEGE WAS ORIGINALLY LOCATED AT 27 CAINE ROAD BUT MOVED TO ITS PRESENT LOCATION AT LYTTTELTON ROAD IN 1923.

THE FOUNDATION STONE OF THE BUILDING, LOCATED AT WEST END PARK, WAS LAID ON APRIL 7, 1922 BY THE VISITING PRINCE OF WALES AND THE BUILDING WAS OFFICIALLY DECLARED OPEN ON JANUARY 25, 1924 BY LADY STUBBS, WIFE OF THE THEN GOVERNOR, SIR REGINALD STUBBS.

THE ORIGINAL PLAN FOR THE COLLEGE WAS THE WORK OF THE ARCHITECTURAL FIRM, MESSRS LITTLE, ADAMS & WOOD (NOW NO LONGER IN BUSINESS). THE WEST WING AND THE CENTRAL PORTION OF THE BUILDING WERE COMPLETED IN 1923 WHILE THE EAST WING WAS BUILT IN 1928.

THE BUILDING IS A FOUR-STOREYED STRUCTURE ENCLOSING A SCHOOL HALL IN THE CENTRE.

THE DESIGN CONCEPT AND LAYOUT OF THIS EUROPEAN BUILDING IS OF PARTICULAR INTEREST BECAUSE OF ITS SIMILARITIES IN STYLE TO A TRADITIONAL CHINESE COURTYARD HOUSE.

THE LOAD BEARING WALLS WERE BUILT OF TWO DIFFERENT MATERIALS, WITH MASONRY WORK BENEATH THE GROUND FLOOR LEVEL AND BRICKWORK ABOVE IT. THE PITCHED ROOF IS OF TIMBER CONSTRUCTION WITH CHINESE PAN AND ROLL TILES.

OWING TO SUBSEQUENT EXPANSION, OTHER BUILDINGS WERE ADDED TO THE COLLEGE COMPOUND. THE STRUCTURE NOW DECLARED IS THE MAIN BUILDING.

THE BUILDING WILL BE PROPERLY MAINTAINED BY THE GOVERNMENT AND WILL CONTINUE TO BE USED BY THE COLLEGE.

- - - - 0 - - - -

FRIDAY, FEBRUARY 28, 1992

- 25 -

CLOSURE OF IMMIGRATION ABERDEEN OFFICE

* * * * *

THE IMMIGRATION DEPARTMENT TODAY (FRIDAY) REMINDED THE PUBLIC THAT THE ABERDEEN OFFICE AND ABERDEEN MARRIAGE REGISTRY CURRENTLY SITUATED AT ABERDEEN CENTRE, HONG KONG WILL BE CLOSED FROM MONDAY (MARCH 2).

"IN AN EFFORT TO MAXIMISE THE UTILISATION OF ITS RESOURCES, THE IMMIGRATION DEPARTMENT HAS RECENTLY COMPLETED A REVIEW OF ITS BRANCH OFFICE STRATEGY. AS A RESULT, A NUMBER OF BRANCH OFFICES WILL BE CLOSED AND RESOURCES REDEPLOYED TO OTHERS SO THAT SERVICES IN GENERAL CAN BE IMPROVED," A SPOKESMAN FOR THE IMMIGRATION DEPARTMENT SAID.

"THIS WILL ALLOW US TO PROVIDE A BETTER SERVICE TO MORE PEOPLE," THE SPOKESMAN ADDED.

MEMBERS OF THE PUBLIC MAY APPROACH THE IMMIGRATION HEADQUARTERS OR OTHER BRANCH OFFICES FOR DOCUMENTS AND REGISTRATION OF PERSONS SERVICES.

FOR MARRIAGE REGISTRATION SERVICE, THE PUBLIC MAY MAKE USE OF OTHER MARRIAGE REGISTRIES IN CENTRAL OR SAI WAN HO.

FOR ENQUIRIES, THE PUBLIC MAY TELEPHONE 824 6111.

- - - - 0 - - - -

HONG KONG GOVERNMENT EXCHANGE FUND
MONEY MARKET OPERATIONS

* * * * *

	DATE	\$ MILLION
	----	-----
CLOSING BALANCE IN THE ACCOUNT ON	27.2.92	600
EFFECT OF FORWARDS TO BE SETTLED ON	28.2.92	+169
EFFECT OF OPERATIONS THIS MORNING		-169
EFFECT OF OPERATIONS THIS AFTERNOON		+500*

* LATE O/N ASSISTANCE,
TO BE REVERSED ON 2 MAR 92

TRADE WEIGHTED INDEX 111.5 *-0,1* 28.2.92

/HONG KONG

FRIDAY, FEBRUARY 28, 1992

- 26 -

HONG KONG GOVERNMENT EXCHANGE FUND

EF BILLS

HONG KONG GOVERNMENT BONDS

TERMS	YIELD	TERM	ISSUE	COUPON	PRICE	YIELD
1 WEEK	3.89 PCT	21 MONTHS	2311	6.25	100.83	5.81
1 MONTH	3.82 PCT	24 MONTHS	2402	5.50	99.40	5.91
3 MONTHS	3.82 PCT					
6 MONTHS	4.03 PCT					
12 MONTHS	4.68 PCT					

TOTAL TURNOVER OF BILLS AND BONDS - 7,970 MN

CLOSED 28 FEBRUARY 1992

----- 0 -----