



DAILY INFORMATION BULLETIN

ISSUED BY GOVERNMENT INFORMATION SERVICES
BEACONSFIELD HOUSE, HONG KONG. TEL.: 842 8777

FRIDAY, FEBRUARY 14, 1992

<u>CONTENTS</u>	<u>PAGE NO.</u>
GOVERNOR'S NEW TITLE ANNOUNCED	1
FS DISMISSES BUDGET SPECULATION	1
HK'S EXTERNAL TRADE PERFORMANCE IN DECEMBER AND WHOLE YEAR OF 1991	2
PRELIMINARY FIGURES OF PROPERTY REVIEW 1992 RELEASED	8
FESTIVAL TO FOSTER HONG KONG-CANADA TIES	15
JANUARY AIR QUALITY REPORT RELEASED	16
FIVE LAND LOTS FOR SALE BY AUCTION	19
NEW PUMPING STATION FOR TRANSFERRING CHINA WATER	20
TWO INSHORE WORKS TO START IN NEW TERRITORIES	20
ROADWORKS PROPOSED TO IMPROVE WONG TAI SIN TRAFFIC	21
TENDERS FOR INDOOR GAMES HALL AND RURAL CENTRE	22
TENDERS INVITED FOR BUS LANE WORKS	23
OLD-TYPE IDENTITY CARDS DECLARED INVALID	23
TWO DRIVING TEST CENTRES CLOSED	24
EXHIBITION ON LOCAL LAW AND LEGAL SYSTEM	24
WAN CHAI ROAD SAFETY CARNIVAL	25
EFFORTS ON WORK SAFETY STEPPED UP	26
FUN FAIR FOR YUEN LONG RESIDENTS	26
HONG KONG GOVERNMENT EXCHANGE FUND MONEY MARKET OPERATIONS	27

FRIDAY, FEBRUARY 14, 1992

- 1 -

GOVERNOR'S NEW TITLE ANNOUNCED

* * * * *

A GOVERNMENT SPOKESMAN ANNOUNCED TODAY (FRIDAY) THAT THE GOVERNOR'S NEW TITLE IS TO BE LORD WILSON OF TILLYORN.

THE FOLLOWING ANNOUNCEMENT WILL APPEAR IN THE LONDON GAZETTE:

"THE QUEEN HAS BEEN PLEASED BY LETTERS PATENT UNDER THE GREAT SEAL OF THE REALM DATED THE 14TH FEBRUARY 1992 TO CONFER THE DIGNITY OF A BARONY OF THE UNITED KINGDOM FOR LIFE UPON SIR DAVID CLIVE WILSON, G.C.M.G., BY THE NAME, STYLE AND TITLE OF BARON WILSON OF TILLYORN, OF FINZEAN IN THE DISTRICT OF KINCARDINE AND DEESIDE AND OF FANLING IN HONG KONG."

THE GOVERNOR WILL USE HIS NEW TITLE FROM TODAY.

IN CHOOSING THE NEW TITLE, THE GOVERNOR WANTED TO REFLECT HIS LINKS WITH BOTH SCOTLAND AND HONG KONG.

TILLYORN IS THE NAME OF LORD AND LADY WILSON'S FAMILY HOME IN ABERDEENSHIRE.

FINZEAN IS THE NAME OF THE VALLEY WHERE THE HOUSE IS - IN AN AREA WITH WHICH LORD WILSON HAS A FAMILY ASSOCIATION DATING FROM THE EARLY 18TH CENTURY.

FANLING WAS CHOSEN BECAUSE FANLING LODGE HAS BEEN THE COUNTRY HOME OF SEVERAL GOVERNORS AND IT REPRESENTS ONE OF THE MANY PLACES IN HONG KONG TO WHICH THE GOVERNOR AND HIS FAMILY HAVE BECOME VERY ATTACHED.

- - - - 0 - - - -

FS DISMISSES BUDGET SPECULATION

* * * * *

THE FINANCIAL SECRETARY, MR HAMISH MACLEOD, TODAY (FRIDAY) REFUTED SUGGESTIONS THAT THE GOVERNMENT HAD BEEN FLYING TRIAL BALLOONS ABOUT REVENUE PROPOSALS IN THE BUDGET.

"WE DO NOT COMMENT ON SPECULATIVE REPORTS ABOUT BUDGET PROPOSALS, BUT I WISH TO STRESS THAT NEITHER MYSELF NOR MY COLLEAGUES HAVE DISCLOSED TO ANYBODY DETAILS OF REVENUE PROPOSALS.

"ANY REPORTS ON REVENUE PROPOSALS WHICH MAY APPEAR BEFORE MY PRESENTATION OF THE BUDGET TO THE LEGISLATIVE COUNCIL ON MARCH 4 ARE MERE SPECULATION AND SHOULD BE TREATED AS SUCH," HE SAID.

ON RECENT MEDIA REPORTS OF PLANS TO ESTABLISH A COMMITTEE TO REVIEW TAXATION, MR MACLEOD SAID THE GOVERNMENT HAS NOT MADE A DECISION ON THE MATTER.

"THERE IS NO TRUTH IN REPORTS OF THE COMMITTEE'S EXISTENCE OR THAT IT IS IN THE PROCESS OF BEING SET UP," HE SAID.

- - - - 0 - - - -

HK'S EXTERNAL TRADE PERFORMANCE IN DECEMBER AND WHOLE YEAR OF 1991

* * * * *

TOTAL MERCHANDISE TRADE IN DECEMBER LAST YEAR, AT \$151,760 MILLION, GREW BY 30% IN VALUE AS COMPARED WITH DECEMBER 1990, ACCORDING TO STATISTICS RELEASED TODAY (FRIDAY) BY THE CENSUS AND STATISTICS DEPARTMENT.

AMONG THE DIFFERENT TYPES OF TRADE, RE-EXPORTS SHOWED THE STRONGEST GROWTH, BY 43% OVER DECEMBER 1990, TO \$52,487 MILLION IN DECEMBER 1991.

THE VALUE OF DOMESTIC EXPORTS INCREASED BY 10% TO \$22,299 MILLION, BRINGING THE VALUE OF TOTAL EXPORTS TO \$74,786 MILLION IN DECEMBER 1991, 31% ABOVE THAT IN DECEMBER 1990.

THE VALUE OF IMPORTS INCREASED BY 30% TO \$76,974 MILLION.

FOR THE YEAR 1991 AS A WHOLE, THE VALUE OF TOTAL MERCHANDISE TRADE, AT \$1,544,868 MILLION, INCREASED BY 20% AS COMPARED WITH THE YEAR 1990.

OVER THE SAME PERIOD OF COMPARISON, THE VALUE OF DOMESTIC EXPORTS INCREASED BY 2% TO \$231,045 MILLION, WHILE THAT OF RE-EXPORTS INCREASED BY 29% TO \$534,841 MILLION.

THUS, THE VALUE OF TOTAL EXPORTS INCREASED BY 20% TO \$765,886 MILLION. THE VALUE OF IMPORTS INCREASED BY 21% TO \$778,982 MILLION.

THE CHANGES IN THE VALUE OF DOMESTIC EXPORTS TO THE 10 MAJOR MARKETS ARE SHOWN IN TABLE 1.

COMPARING DECEMBER 1991 WITH DECEMBER 1990, SUBSTANTIAL INCREASES WERE RECORDED IN THE VALUE OF DOMESTIC EXPORTS TO CHINA AND TAIWAN, BY 35% AND 28% RESPECTIVELY.

THOSE TO THE USA, SINGAPORE, CANADA AND JAPAN INCREASED BY 15%, 12%, 2% AND 2% RESPECTIVELY.

HOWEVER, THE VALUE OF DOMESTIC EXPORTS TO THE FEDERAL REPUBLIC OF GERMANY, FRANCE, THE UNITED KINGDOM AND THE NETHERLANDS DECREASED BY 12%, 10%, 9% AND 4% RESPECTIVELY.

COMPARING THE YEAR 1991 WITH THE YEAR 1990, INCREASES WERE RECORDED IN THE VALUE OF DOMESTIC EXPORTS TO CHINA, SINGAPORE, THE FEDERAL REPUBLIC OF GERMANY, TAIWAN, THE NETHERLANDS, FRANCE AND THE UNITED KINGDOM, BY 15%, 13%, 7%, 6%, 6%, 2% AND 2% RESPECTIVELY.

HOWEVER, THE VALUE OF DOMESTIC EXPORTS TO CANADA, THE USA AND JAPAN DECREASED BY 7%, 5% AND 3% RESPECTIVELY.

TABLE 2 SHOWS THE CHANGES IN THE VALUE OF DOMESTIC EXPORTS OF THE MAJOR COMMODITY DIVISIONS.

COMPARING THE YEAR 1991 WITH THE YEAR 1990, INCREASES IN THE VALUE OF DOMESTIC EXPORTS WERE REGISTERED FOR CLOTHING (BY \$3,669 MILLION OR 5%); ELECTRICAL MACHINERY, APPARATUS AND APPLIANCES, AND ELECTRICAL PARTS THEREOF (BY \$2,087 MILLION OR 12%); OFFICE MACHINES AND AUTOMATIC DATA PROCESSING EQUIPMENT (BY \$2,042 MILLION OR 13%); AND TEXTILES (BY \$724 MILLION OR 4%).

HOWEVER, DECREASES IN THE VALUE OF DOMESTIC EXPORTS WERE RECORDED IN PHOTOGRAPHIC APPARATUS, EQUIPMENT AND SUPPLIES, OPTICAL GOODS, WATCHES AND CLOCKS (BY \$2,420 MILLION OR 11%), AND MISCELLANEOUS MANUFACTURED ARTICLES (BY \$1,696 MILLION OR 7%).

THE CHANGES IN THE VALUE OF IMPORTS FROM THE 10 MAJOR SUPPLIERS ARE SUMMARISED IN TABLE 3.

COMPARING DECEMBER 1991 WITH DECEMBER 1990, INCREASES WERE RECORDED IN THE VALUE OF IMPORTS FROM ALL MAJOR SUPPLIERS. THE VALUE OF IMPORTS FROM THE USA, TAIWAN, ITALY, THE FEDERAL REPUBLIC OF GERMANY, CHINA, JAPAN AND THE REPUBLIC OF KOREA INCREASED SUBSTANTIALLY, BY 43%, 38%, 34%, 33%, 31%, 29% AND 23% RESPECTIVELY.

THOSE FROM THE UNITED KINGDOM, SINGAPORE AND SWITZERLAND ALSO INCREASED BY 11%, 6% AND 6% RESPECTIVELY.

COMPARING THE YEAR 1991 WITH THE YEAR 1990, INCREASES WERE RECORDED IN THE VALUE OF IMPORTS FROM MOST MAJOR SUPPLIERS.

THE VALUE OF IMPORTS FROM TAIWAN, CHINA, THE REPUBLIC OF KOREA, JAPAN AND SINGAPORE INCREASED SUBSTANTIALLY, BY 28%, 24%, 24%, 23% AND 21% RESPECTIVELY.

THOSE FROM THE UNITED KINGDOM, THE USA, THE FEDERAL REPUBLIC OF GERMANY AND ITALY INCREASED BY 17%, 14%, 12% AND 8% RESPECTIVELY. HOWEVER, THE VALUE OF IMPORTS FROM SWITZERLAND DECREASED BY 6%.

TABLE 4 SHOWS THE CHANGES IN THE VALUE OF IMPORTS OF THE MAJOR COMMODITY DIVISIONS.

COMPARING THE YEAR 1991 WITH THE YEAR 1990, CONSIDERABLE INCREASES IN THE VALUE OF IMPORTS WERE RECORDED IN ELECTRICAL MACHINERY, APPARATUS AND APPLIANCES, AND ELECTRICAL PARTS THEREOF (BY \$15,973 MILLION OR 25%); TEXTILES (BY \$14,676 MILLION OR 18%); CLOTHING (BY \$12,978 MILLION OR 24%); AND TELECOMMUNICATIONS AND SOUND RECORDING AND REPRODUCING APPARATUS AND EQUIPMENT (BY \$10,688 MILLION OR 22%).

HOWEVER, DECREASES IN THE VALUE OF IMPORTS WERE REGISTERED FOR CORK AND WOOD MANUFACTURES (BY \$164 MILLION OR 4%), AND ANIMAL AND VEGETABLE OILS AND FATS, PROCESSED, AND WAXES OF ANIMAL OR VEGETABLE ORIGIN (BY \$63 MILLION OR 51%).

THE CHANGES IN THE VALUE OF HONG KONG'S RE-EXPORTS TO THE 10 MAJOR MARKETS ARE SHOWN IN TABLE 5.

COMPARING DECEMBER 1991 WITH DECEMBER 1990, THE VALUE OF RE-EXPORTS TO ALL MAJOR MARKETS INCREASED.

SIGNIFICANT INCREASES WERE RECORDED IN THE VALUE OF RE-EXPORTS TO CHINA, THE USA, CANADA, FRANCE, JAPAN, THE UNITED KINGDOM AND TAIWAN, BY 59%, 50%, 48%, 40%, 39%, 37% AND 34% RESPECTIVELY.

THE VALUE OF RE-EXPORTS TO THE REPUBLIC OF KOREA AND SINGAPORE ALSO GREW, BY 20% AND 19% RESPECTIVELY, WHILE THAT TO THE FEDERAL REPUBLIC OF GERMANY RECORDED A SLIGHT GROWTH OF 2%.

COMPARING THE YEAR 1991 WITH THE YEAR 1990, THE VALUE OF RE-EXPORTS TO MOST MAJOR MARKETS INCREASED.

SIGNIFICANT INCREASES WERE RECORDED IN THE VALUE OF RE-EXPORTS TO FRANCE, CHINA, THE FEDERAL REPUBLIC OF GERMANY, CANADA, THE USA, JAPAN AND THE UNITED KINGDOM, BY 41%, 38%, 37%, 30%, 26%, 21% AND 21% RESPECTIVELY.

THE VALUE OF RE-EXPORTS TO TAIWAN AND THE REPUBLIC OF KOREA INCREASED BY 17% AND 12% RESPECTIVELY. HOWEVER, THE VALUE OF RE-EXPORTS TO SINGAPORE DECREASED BY 4%.

TABLE 6 SHOWS THE CHANGES IN THE VALUE OF RE-EXPORTS OF THE MAJOR COMMODITY DIVISIONS.

COMPARING THE YEAR 1991 WITH THE YEAR 1990, CONSIDERABLE INCREASES IN THE VALUE OF RE-EXPORTS WERE REGISTERED FOR CLOTHING (BY \$15,879 MILLION OR 33%); MISCELLANEOUS MANUFACTURED ARTICLES (BY \$14,943 MILLION OR 27%); TEXTILES (BY \$11,390 MILLION OR 24%); AND FOOTWEAR (BY \$9,727 MILLION OR 71%).

HOWEVER, DECREASES IN THE VALUE OF RE-EXPORTS WERE RECORDED IN FISH, CRUSTACEANS AND MOLLUSCS, AND PREPARATIONS THEREOF (BY \$477 MILLION OR 12%), AND RAW HIDES, SKINS AND FURSKINS (BY \$65 MILLION OR 9%).

ALL THE TRADE STATISTICS DESCRIBED HERE ARE MEASURED AT CURRENT PRICES AND NO ACCOUNT HAS BEEN TAKEN OF THE CHANGES IN PRICES BETWEEN THE PERIODS OF COMPARISON.

A SEPARATE ANALYSIS OF THE PRICE AND VOLUME MOVEMENTS OF EXTERNAL TRADE IN DECEMBER 1991 WILL BE RELEASED EARLY NEXT MONTH.

DETAILED STATISTICS ON TRADE VALUE BY COMMODITY AND BY COUNTRY ARE PUBLISHED IN TRADE STATISTICS REPORTS.

THE DECEMBER 1991 ISSUE OF THE "HONG KONG EXTERNAL TRADE" WITH DETAILED ANALYSES ON IMPORTS, EXPORTS AND RE-EXPORTS IN DECEMBER 1991 WILL BE AVAILABLE FOR SALE AROUND FEBRUARY 21, AT THE GOVERNMENT PUBLICATIONS SALES CENTRE, GROUND FLOOR, GENERAL POST OFFICE BUILDING, CONNAUGHT PLACE, CENTRAL AT \$33.50 PER COPY.

ENQUIRIES REGARDING REGULAR SUBSCRIPTION TO THIS REPORT MAY BE DIRECTED TO THE INFORMATION SERVICES DEPARTMENT AT FRENCH MISSION BUILDING, 1 BATTERY PATH, HONG KONG (TEL. NO. 842 8802) AND ENQUIRIES ON TRADE STATISTICS TO THE CENSUS AND STATISTICS DEPARTMENT (TEL. NO. 582 4915).

TABLE 1: DOMESTIC EXPORTS TO THE 10 MAJOR MARKETS

MAJOR MARKET	DEC 1991 (HKD MN.)	DEC 91 OVER DEC 90 (%)	JAN-DEC 1991 (HKD MN.)	JAN-DEC 91 OVER JAN-DEC 90 (%)
USA	6,338	+ 15	62,870	- 5
CHINA	5,428	+ 35	54,404	+ 15
F.R. OF GERMANY	1,916	- 12	19,318	+ 7
UK	1,322	- 9	13,706	+ 2
JAPAN	949	+ 2	11,666	- 3
SINGAPORE	772	+ 12	8,794	+ 13
TAIWAN	580	+ 28	6,066	+ 6
NETHERLANDS	507	- 4	5,238	+ 6
CANADA	520	+ 2	5,014	- 7
FRANCE	365	- 10	3,710	+ 2

TABLE 2: DOMESTIC EXPORTS OF THE MAJOR COMMODITY DIVISIONS

COMMODITY DIVISION	DEC 1991 (HKD MN.)	DEC 91 OVER DEC 90 (%)	JAN-DEC 1991 (HKD MN.)	JAN-DEC 91 OVER JAN-DEC 90 (%)
ARTICLES OF APPAREL AND CLOTHING ACCESSORIES	8,271	+ 11	75,834	+ 5
MISCELLANEOUS MANUFACTURED ARTICLES (MAINLY JEWELLERY, GOLDSMITHS' AND SILVERSMITHS' WARES)	2,122	+ 9	24,318	- 7
ELECTRICAL MACHINERY, APPARATUS AND APPLIANCES, AND ELECTRICAL PARTS THEREOF	1,775	+ 22	19,380	+ 12
PHOTOGRAPHIC APPARATUS, EQUIPMENT AND SUPPLIES, OPTICAL GOODS, WATCHES AND CLOCKS	1,808	- 12	19,077	- 11

OFFICE MACHINES AND AUTOMATIC DATA PROCESSING EQUIPMENT	1,609	+ 21	18,292	+ 13
TEXTILE YARN, FABRICS, MADE-UP ARTICLES AND RELATED PRODUCTS	1,603	+ 17	17,630	+ 4

TABLE 3: IMPORTS FROM THE 10 MAJOR SUPPLIERS

MAJOR SUPPLIER	DEC 1991 (HKD MN.)	DEC 91 OVER DEC 90 (%)	JAN-DEC 1991 (HKD MN.)	JAN-DEC 91 OVER JAN-DEC 90 (%)
CHINA	29,242	+ 31	293,356	+ 24
JAPAN	12,731	+ 29	127,402	+ 23
TAIWAN	7,467	+ 38	74,591	+ 28
USA	5,943	+ 43	58,837	+ 14
REP OF KOREA	3,284	+ 23	34,944	+ 24
SINGAPORE	2,886	+ 6	31,525	+ 21
F.R. OF GERMANY	1,674	+ 33	16,641	+ 12
UK	1,505	+ 11	16,545	+ 17
ITALY	1,165	+ 34	11,729	+ 8
SWITZERLAND	1,120	+ 6	10,781	- 6

TABLE 4: IMPORTS OF THE MAJOR COMMODITY DIVISIONS

COMMODITY DIVISION	DEC 1991 (HKD MN.)	DEC 91 OVER DEC 90 (%)	JAN-DEC 1991 (HKD MN.)	JAN-DEC 91 OVER JAN-DEC 90 (%)
TEXTILE YARN, FABRICS, MADE-UP ARTICLES AND RELATED PRODUCTS	9,196	+ 22	94,258	+ 18
ELECTRICAL MACHINERY, APPARATUS AND APPLIANCES, AND ELECTRICAL PARTS THEREOF	7,621	+ 42	79,768	+ 25

ARTICLES OF APPAREL AND CLOTHING ACCESSORIES	7,342	+ 49	66,823	+ 24
TELECOMMUNICATIONS AND SOUND RECORDING AND REPRODUCING APPARATUS AND EQUIPMENT	5,639	+ 25	60,094	+ 22
MISCELLANEOUS MANUFACTURED ARTICLES (MAINLY BABY CARRIAGES, TOYS, GAMES AND SPORTING GOODS)	4,987	+ 18	55,198	+ 19
PHOTOGRAPHIC APPARATUS, EQUIPMENT AND SUPPLIES, OPTICAL GOODS, WATCHES AND CLOCKS	4,113	+ 21	38,501	+ 11

TABLE 5: RE-EXPORTS TO THE 10 MAJOR MARKETS

MAJOR MARKET	DEC 1991 (HKD MN.)	DEC 91 OVER DEC 90 (%)	JAN-DEC 1991 (HKD MN.)	JAN-DEC 91 OVER JAN-DEC 90 (%)
CHINA	16,080	+ 59	153,318	+ 38
USA	10,528	+ 50	110,802	+ 26
F.R. OF GERMANY	3,015	+ 2	32,073	+ 37
JAPAN	2,960	+ 39	29,574	+ 21
TAIWAN	2,353	+ 34	24,765	+ 17
UK	1,418	+ 37	14,663	+ 21
REP OF KOREA	1,168	+ 20	14,631	+ 12
SINGAPORE	1,130	+ 19	12,094	- 4
FRANCE	844	+ 40	9,038	+ 41
CANADA	785	+ 48	8,498	+ 30

/TABLE 6:

TABLE 6: RE-EXPORTS OF THE MAJOR COMMODITY DIVISIONS

COMMODITY DIVISION	DEC 1991 (HKD MN.)	DEC 91 OVER DEC 90 (%)	JAN-DEC 1991 (HKD MN.)	JAN-DEC 91 OVER JAN-DEC 90 (%)
MISCELLANEOUS MANUFACTURED ARTICLES (MAINLY BABY CARRIAGES, TOYS, GAMES AND SPORTING GOODS)	6,028	+ 23	71,128	+ 27
ARTICLES OF APPAREL AND CLOTHING ACCESSORIES	6,904	+ 58	63,700	+ 33
TEXTILE YARN, FABRICS, MADE-UP ARTICLES AND RELATED PRODUCTS	5,670	+ 32	58,533	+ 24
TELECOMMUNICATIONS AND SOUND RECORDING AND REPRODUCING APPARATUS AND EQUIPMENT	4,222	+ 30	45,079	+ 24
ELECTRICAL MACHINERY, APPARATUS AND APPLIANCES, AND ELECTRICAL PARTS THEREOF	4,104	+ 39	43,469	+ 17
FOOTWEAR	2,298	+ 58	23,502	+ 71

- - - - 0 - - - -

PRELIMINARY FIGURES OF PROPERTY REVIEW 1992 RELEASED

* * * * *

THE PRELIMINARY FINDINGS OF THE PROPERTY REVIEW 1992, WHICH COVERS THE YEAR ENDING DECEMBER 31, 1991, SHOW THAT SUPPLY LAST YEAR IN THE DOMESTIC AND OFFICE SECTORS WAS UP ON 1990 LEVELS, SIGNIFICANTLY SO IN THE OFFICE SECTOR, BUT WAS DOWN IN THE COMMERCIAL AND FLATTED FACTORY SECTORS.

TAKE-UP IN 1991 OF OFFICE SPACE WAS HIGHER THAN THAT IN 1990, WHILE THE REVERSE WAS TRUE FOR DOMESTIC, COMMERCIAL AND FLATTED FACTORY PREMISES.

VACANCY AT THE END OF 1991 WAS GENERALLY UP OVERALL COMPARED WITH 1990, WITH THE EXCEPTION OF LARGE DOMESTIC UNITS AND THE COMMERCIAL SECTOR WHERE VACANCY DROPPED MARGINALLY.

/PRIVATE DOMESTIC

PRIVATE DOMESTIC - SMALL UNITS (LESS THAN 100 SQUARE METRES)

AROUND 31,650 FLATS WERE COMPLETED IN 1991, SOME 4,250 MORE THAN IN 1990, AND, AS EXPECTED, 55 PER CENT OF THESE WERE IN THE NEW TERRITORIES, PREDOMINANTLY IN TSUEN WAN AND TUEN MUN.

TAKE-UP, AT 21,900, WAS DOWN BY 26 PER CENT, RESULTING IN VACANCY AT THE YEAR END RISING TO ABOUT 29,450, OR 4.1 PER CENT OF STOCK.

SUPPLY IN 1992 IS FORECAST TO REMAIN AT MUCH THE SAME LEVEL AS IN 1991, WITH THE AMOUNT COMPLETED IN THE NEW TERRITORIES EXPECTED TO RISE TO 60 PER CENT, BUT IN 1993, IS EXPECTED TO INCREASE TO 36,200 FLATS, ONE THIRD OF WHICH WILL BE IN TUEN MUN AND SHA TIN.

PRIVATE DOMESTIC - LARGE UNITS (100 SQUARE METRES AND OVER)

SUPPLY OF LARGE DOMESTIC UNITS IN 1991, AT 1,750, DROPPED BY ABOUT 13 PER CENT COMPARED WITH 1990.

MID-LEVELS ON HONG KONG ISLAND ACCOUNTED FOR MORE THAN 700 OF THESE. TAKE-UP, HOWEVER, WAS UP ON THE PRECEDING YEAR, BY AROUND 400, RESULTING IN A MARGINAL DROP IN VACANCY TO 3,550, OR 5.9 PER CENT OF STOCK.

FORECASTS FOR 1992 AND 1993 STAND AT RELATIVELY LOW LEVELS, 1,650 AND 1,900 UNITS RESPECTIVELY.

OFFICES

IN 1991, OVERALL SUPPLY OF OFFICE SPACE, AT 459,000 SQUARE METRES WAS LESS THAN FORECAST, BUT WAS NEVERTHELESS 130 PER CENT UP ON 1990 LEVELS.

TAKE-UP AT 239,000 SQUARE METRES WAS ALSO WELL UP COMPARED TO 1990, BUT STILL FELL SHORT OF SUPPLY, RESULTING IN VACANCY RISING AT THE YEAR END TO 505,000 SQUARE METRES, OR 9.1 PER CENT OF STOCK.

VACANCY AS A PERCENTAGE OF STOCK IS THE HIGHEST SINCE 1985. HOWEVER, THIS IS WELL BELOW THE 21 PER CENT IN 1983.

FORECASTS INDICATE A MASSIVE SUPPLY OF 747,000 SQUARE METRES AND 519,000 SQUARE METRES IN 1992 AND 1993 RESPECTIVELY.

EARLY ESTIMATES ARE THAT A SUBSTANTIAL, ALTHOUGH REDUCED, SUPPLY IS EXPECTED FOR 1994 (APPROXIMATELY 350,000 SQUARE METRES).

THE 1992 TO 1994 SUPPLY IS EXPECTED TO AMOUNT TO ABOUT 30 PER CENT OF THE TOTAL STOCK OF OFFICE SPACE AT THE END OF 1991.

GRADE A:

SUPPLY OF GRADE A SPACE IN 1991 WAS 281,000 SQUARE METRES, REPRESENTING ABOUT 60 PER CENT OF TOTAL OFFICE SUPPLY.

THE BULK WAS LOCATED ON HONG KONG ISLAND, INCLUDING 47,000 SQUARE METRES IN CENTRAL, 118,000 SQUARE METRES IN WAN CHAI/CAUSEWAY BAY AND 38,000 SQUARE METRES IN NORTH POINT.

TAKE-UP OF GRADE A SPACE IN THE YEAR WAS 151,000 SQUARE METRES, AND VACANCY STOOD AT 280,000 SQUARE METRES, OR 9.2 PER CENT OF STOCK.

IN 1992, SUPPLY OF GRADE A SPACE IS FORECAST TO RISE TO 440,000 SQUARE METRES, WITH AROUND 109,000 SQUARE METRES EXPECTED IN CENTRAL, 124,000 SQUARE METRES IN WAN CHAI/CAUSEWAY BAY AND 89,000 SQUARE METRES IN NORTH POINT.

IN 1993, SUPPLY IS EXPECTED TO FALL BACK TO 115,000 SQUARE METRES ONLY 8,000 SQUARE METRES OF WHICH WILL BE IN CENTRAL.

THE BULK, AROUND 86,000 SQUARE METRES IS EXPECTED IN WAN CHAI/CAUSEWAY BAY.

GRADE B:

SUPPLY OF GRADE B SPACE IN 1991 WAS 131,000 SQUARE METRES, REPRESENTING ABOUT 30 PER CENT OF TOTAL OFFICE SUPPLY IN THE YEAR.

HONG KONG ISLAND AGAIN ACCOUNTED FOR THE MAJORITY OF THE SPACE, WITH AROUND 35,000 SQUARE METRES AND 34,000 SQUARE METRES IN WAN CHAI/CAUSEWAY BAY AND NORTH POINT RESPECTIVELY.

TAKE-UP WAS 49,000 SQUARE METRES AND VACANCY AMOUNTED TO 151,000 SQUARE METRES, OR 11.2 PER CENT OF STOCK.

LOOKING AHEAD, SUPPLY LEVELS LOOK SET TO RISE IN 1992 AND 1993, TO 163,000 SQUARE METRES AND 253,000 SQUARE METRES RESPECTIVELY. NEARLY A QUARTER OF THE 2 YEARS' OUTPUT IS EXPECTED TO BE IN KOWLOON BAY.

GRADE C:

THE REMAINING 10 PER CENT OF TOTAL OFFICE SUPPLY IN 1991 WAS GRADE C SPACE, AMOUNTING TO 47,000 SQUARE METRES.

TAKE-UP OF GRADE C ACCOMMODATION WAS AROUND 39,000 SQUARE METRES AND VACANCY STOOD AT 74,000 SQUARE METRES, OR 6.6 PER CENT OF STOCK.

FORECASTS FOR 1992 AND 1993 INDICATE A SIGNIFICANT INCREASE ON 1991 LEVELS, TO 144,000 SQUARE METRES IN 1992 AND 151,000 SQUARE METRES IN 1993. THIS WILL BE PREDOMINANTLY ON HONG KONG ISLAND.

COMMERCIAL PREMISES

SUPPLY OF COMMERCIAL SPACE IN 1991 WAS AROUND 205,000 SQUARE METRES, ABOUT 14 PER CENT LESS THAN SUPPLY IN 1990.

JUST OVER 50 PER CENT OF THIS WAS IN THE NEW TERRITORIES, PREDOMINANTLY IN TSUEN WAN.

TAKE-UP WAS ALSO DOWN ON 1990 LEVELS, AND AT 177,000 SQUARE METRES FELL SHORT OF SUPPLY FOR THE YEAR. NEVERTHELESS, VACANCY DROPPED MARGINALLY TO 351,000 SQUARE METRES, OR 4.7 PER CENT OF STOCK.

LOOKING AHEAD TO 1992 AND 1993, SUPPLY IS FORECAST TO RISE SUBSTANTIALLY, TO 363,000 SQUARE METRES IN 1992, OF WHICH 161,000 SQUARE METRES IS EXPECTED IN KWUN TONG, AND TO 378,000 SQUARE METRES IN 1993, WHEN WAN CHAI, WITH 57,000 SQUARE METRES, WILL PREDOMINATE.

FLATTED FACTORIES

FLATTED FACTORY SPACE COMPLETED IN 1991 AMOUNTED TO 521,000 SQUARE METRES, 11 PER CENT LESS THAN THAT COMPLETED IN 1990. AROUND 54 PER CENT WAS IN THE NEW TERRITORIES, SOME 150,000 SQUARE METRES BEING IN TSUEN WAN AND TUEN MUN. ELSEWHERE, 60,000 SQUARE METRES WAS IN SHAU KEI WAN. TAKE-UP WAS DOWN BY AROUND 31 PER CENT, AND AS A RESULT, VACANCY ROSE TO 1,054,000 SQUARE METRES, OR 6.2 PER CENT OF STOCK.

FORECASTS INDICATE THAT SUPPLY WILL CONTINUE TO FALL IN 1992 AND 1993, TO 499,000 SQUARE METRES AND 452,000 SQUARE METRES RESPECTIVELY. OF THE TWO YEARS' SUPPLY, TSUEN WAN IS EXPECTED TO ACCOUNT FOR ALMOST 38 PER CENT.

NOTE TO EDITORS:

IT SHOULD BE NOTED THAT THE FIGURES QUOTED ARE PRELIMINARY ONLY. FULL AND FINAL FIGURES WILL BE SHOWN IN THE PROPERTY REVIEW 1992 WHICH IS EXPECTED TO BE AVAILABLE IN MARCH.

Private Domestic

	No. of units			
	<u>Supply</u>	<u>Take-up</u>	<u>Vacancy</u>	<u>%*</u>
<u>All Units</u>				
1989	36 500	23 750	30 300	4.2
1990	29 400	30 700	26 150	3.5
1991	33 400	23 350	33 000	4.2
1992	[33 500]			
1993	[38 100]			
<u>Small Units (less than 100m²)</u>				
1989	33 800	21 050	27 200	4.1
1990	27 400	29 650	22 550	3.2
1991	31 650	21 900	29 450	4.1
1992	[31 850]			
1993	[36 200]			
<u>Large Units (100m² and over)</u>				
1989	2 700	2 700	3 100	5.4
1990	2 000	1 050	3 600	6.2
1991	1 750	1 450	3 550	5.9
1992	[1 650]			
1993	[1 900]			

'Private domestic' excludes flats built under the Home Ownership Scheme and the Private Sector Participation Scheme.

* Vacancy at the end of the year as a percentage of stock.

[forecast figures]

Offices

	('000 m ²)			%*
	<u>Supply</u>	<u>Take-up</u>	<u>Vacancy</u>	
<u>All Grades</u>				
1989	269	102	261	5.3
1990	200	135	308	6.1
1991	459	239	505	9.1
1992	[747]			
1993	[519]			
<u>Grade A</u>				
1991	281	151	280	9.2
1992	[440]			
1993	[115]			
<u>Grade B</u>				
1991	131	49	151	11.2
1992	[163]			
1993	[253]			
<u>Grade C</u>				
1991	47	39	74	6.6
1992	[144]			
1993	[151]			

* Vacancy at the end of the year as a percentage of stock.

[forecast figures]

N.B. A review of office grades was carried out in 1991, the principal change being the removal of the location factor. The figures for Grade A, B and C above have been compiled in accordance with revised criteria which principally reflect quality of construction, finishes, facilities and management.

Commercial

	('000 m ²)			
	<u>Supply</u>	<u>Take-up</u>	<u>Vacancy</u>	<u>%*</u>
1989	197	126	395	5.6
1990	239	194	382	5.2
1991	205	177	351	4.7
1992	[363]			
1993	[378]			

Platted Factories

	('000 m ²)			
	<u>Supply</u>	<u>Take-up</u>	<u>Vacancy</u>	<u>%*</u>
1989	864	672	833	5.1
1990	586	385	886	5.3
1991	521	265	1054	6.2
1992	[499]			
1993	[452]			

* Vacancy at the end of the year as a percentage of stock.

[forecast figures]

FRIDAY, FEBRUARY 14, 1992

- 15 -

FESTIVAL TO FOSTER HONG KONG-CANADA TIES

* * * * *

HONG KONG AND CANADA, WITH STRONG LASTING TIES IN PLACE, WILL BE ABLE TO WORK TOGETHER TOWARDS A PROSPEROUS AND BRIGHT FUTURE NOT JUST FOR THE TWO COMMUNITIES, BUT FOR THE ASIA PACIFIC REGION AS A WHOLE.

THE SECRETARY FOR RECREATION AND CULTURE, MR JAMES SO, SAID THIS WHEN ADDRESSING THE HONG KONG-CANADA BUSINESS ASSOCIATION AT A LUNCHEON MEETING IN OTTAWA YESTERDAY (THURSDAY).

MR SO, WHO IS ALSO THE CHAIRMAN OF A STEERING GROUP ON A FESTIVAL TO BE HELD IN FIVE CANADIAN CITIES IN SEPTEMBER-OCTOBER THIS YEAR, IS CURRENTLY ON A TWO-WEEK VISIT IN CANADA TO LAY THE GROUND WORKS FOR THE FESTIVAL.

"HONG KONG FESTIVAL '92 AIMS TO FOSTER A BETTER UNDERSTANDING AND MORE LASTING RELATIONSHIP BETWEEN THE PEOPLES OF HONG KONG AND CANADA," HE SAID.

"IT IS OUR INTENTION TO BUILD A SOLID AND STURDY FOUNDATION FOR A BRIDGE THAT LINKS OUR TWO COMMUNITIES ACROSS THE PACIFIC," HE ADDED.

IN HIS SPEECH TITLED "HONG KONG-CANADA, BRIDGE ACROSS THE PACIFIC", MR SO SAID CANADIANS HAD FULLY REALISED THE IMPORTANCE OF HONG KONG IN THE REGION TO BUILD UP A STRONG TRADING PARTNERSHIP.

HE STRESSED THAT THE LINK BETWEEN HONG KONG AND CANADA HAD GONE WELL BEYOND TRADE AND COMMERCE.

HE POINTED OUT THAT CANADA WAS PROBABLY THE MOST SOUGHT-AFTER COUNTRY FOR HONG KONG STUDENTS SEEKING EDUCATION ABROAD AND BEING ONE OF THE MOST POPULAR DESTINATIONS FOR HONG KONG EMIGRANTS.

AT THE SAME TIME, HONG KONG WAS HOME TO AN ESTIMATED 35,000 CANADIANS, THE BIGGEST CANADIAN COMMUNITY IN ASIA, HE ADDED.

"HONG KONG IS NOW RECEIVING MORE VISITS BY CANADIAN CULTURAL PERFORMING GROUPS THAN ANYWHERE ELSE IN ASIA.

"WE ARE ALSO AMONG THE FIRST TO ENTER A JOINT CO-OPERATION WITH CANADA ON FILM AND TELEVISION CO-PRODUCTION WHEN WE SIGNED A MEMORANDUM OF UNDERSTANDING WITH CANADA IN JUNE LAST YEAR," THE SECRETARY SAID.

ON THE FUTURE OF THE TERRITORY, MR SO SAID POST-1997 HONG KONG WOULD RETAIN ALL THE INGREDIENTS THAT HAD MADE IT THE DYNAMIC AND VIBRANT COMMUNITY OF TODAY.

MR SO WILL LEAVE CANADA TODAY (FRIDAY) FOR LONDON TO ATTEND TWO CONFERENCES ON TELEVISION AND SATELLITE BROADCASTING BEFORE RETURNING TO HONG KONG ON FEBRUARY 21.

- - - - 0 - - - -

FRIDAY, FEBRUARY 14, 1992

- 16 -

JANUARY AIR QUALITY REPORT RELEASED

* * * * *

THE ENVIRONMENTAL PROTECTION DEPARTMENT (EPD) TODAY (FRIDAY) RELEASED AIR QUALITY INFORMATION FOR LAST MONTH AS OBTAINED AT ITS MONG KOK, CENTRAL/WESTERN AND KWAI CHUNG MONITORING STATIONS.

THIS IS THE SEVENTH MONTHLY ANNOUNCEMENT MADE BY THE DEPARTMENT. SIMILAR ANNOUNCEMENTS WILL BE MADE REGULARLY.

THE REPORTED AIR POLLUTANTS INCLUDE SULPHUR DIOXIDE (SO₂) AND NITROGEN DIOXIDE (NO₂) WHICH ARE MONITORED CONTINUOUSLY ROUND THE CLOCK, AND TOTAL SUSPENDED PARTICULATES (TSP) AND RESPIRABLE SUSPENDED PARTICULATES (RSP) WHICH ARE SAMPLED FOR 24 HOURS EVERY SIX DAYS.

THE GENERAL NITROGEN DIOXIDE LEVEL WITHIN LAST MONTH WAS HIGHER THAN DECEMBER LAST YEAR. ONE MEASUREMENT EXCEEDED THE DAILY AIR QUALITY OBJECTIVE AT MONG KOK STATION ON JANUARY 25.

DUST MONITORING AT THE CENTRAL/WESTERN STATION WAS SUSPENDED LAST MONTH DUE TO CONSTRUCTION WORKS AT THE MONITORING STATION. DUST LEVELS (TSP AND RSP) IN AIR MEASURED AT THE OTHER TWO STATIONS WITHIN LAST MONTH WERE SIMILAR TO DECEMBER LAST YEAR.

THE SPOKESMAN SAID THE PURPOSE OF THE ANNOUNCEMENT IS TO MAKE THE PUBLIC MORE AWARE OF THE GENERAL AIR QUALITY LEVELS TO WHICH THEY MIGHT BE EXPOSED, AND THE ATMOSPHERIC AND OTHER FACTORS THAT AFFECT AIR QUALITY.

THESE AIR POLLUTANTS MAINLY COME FROM COMBUSTION OF FUEL IN INDUSTRIAL PLANTS AND MOTOR VEHICLES ENGINES. TSP AND RSP ARE ALSO GENERATED BY CONSTRUCTION ACTIVITIES AND SOME MANUFACTURING PROCESSES.

THE DAILY HONG KONG AIR QUALITY OBJECTIVES OF SO₂ AND NO₂, TSP AND RSP ARE 350, 150, 260 AND 180 MICROGRAMS PER CUBIC METRES RESPECTIVELY.

THESE OBJECTIVES ARE COMPARABLE TO INTERNATIONALLY RECOGNISED AIR QUALITY STANDARDS RECOMMENDED FOR THE PROTECTION OF THE HEALTH OF THE GENREAL PUBLIC.

HIGH LEVELS OF SO₂ CAUSE RESPIRATORY ILLNESS, REDUCE LUNG FUNCTION AND INCREASE MORTALITY RATE.

NO₂ CAUSES RESPIRATORY IRRITATION, INCREASES SUSCEPTIBILITY TO RESPIRATORY INFECTION AND IMPAIRS LUNG DEVELOPMENT.

TSP ACTS SYNERGISTICALLY WITH OTHER GASEOUS POLLUTANTS. RSP CAUSES RESPIRATORY ILLNESS AND REDUCES LUNG FUNCTION. SOME FORMS OF RSP MAY CAUSE CANCER.

/THE MONG

FRIDAY, FEBRUARY 14, 1992

- 17 -

THE MONG KOK, CENTRAL/WESTERN AND KWAI CHUNG STATIONS BROADLY REPRESENT AIR QUALITY AT LOCATIONS CLOSE TO ROAD TRAFFIC IN BUILT-UP URBAN DISTRICT; COMBINED COMMERCIAL AND RESIDENTIAL DISTRICTS; AND DISTRICT CLOSE TO INDUSTRIAL AREAS RESPECTIVELY.

CURRENTLY THE EPD OPERATES A TOTAL OF 11 FIXED AIR QUALITY MONITORING STATIONS, INCLUDING THE THREE MENTIONED ABOVE.

THE OTHER EIGHT STATIONS ARE AT KWUN TONG, SHAM SHUI PO, TSIM SHA TSUI, TSEUNG KWAN O, TSUEN WAN, HONG KONG SOUTH, TAI PO AND SHA TIN.

- - - - -

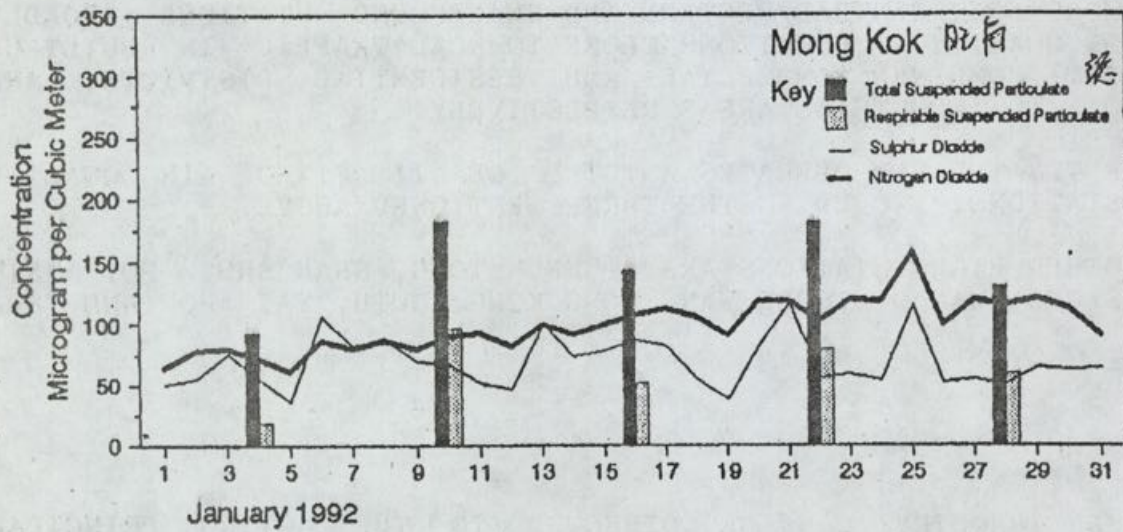
NOTE OF EDITORS:

FURTHER ENQUIRY CAN BE DIRECTED TO THE ACTING PRINCIPAL ENVIRONMENTAL PROTECTION OFFICER MR W.S. TSUI ON TEL. 810 3049.

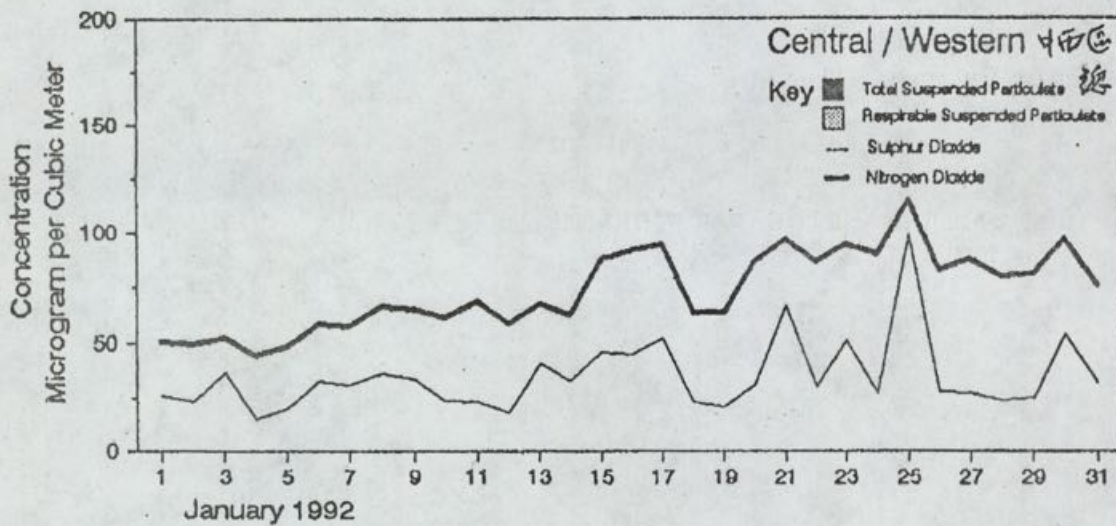
- - - - -

/18

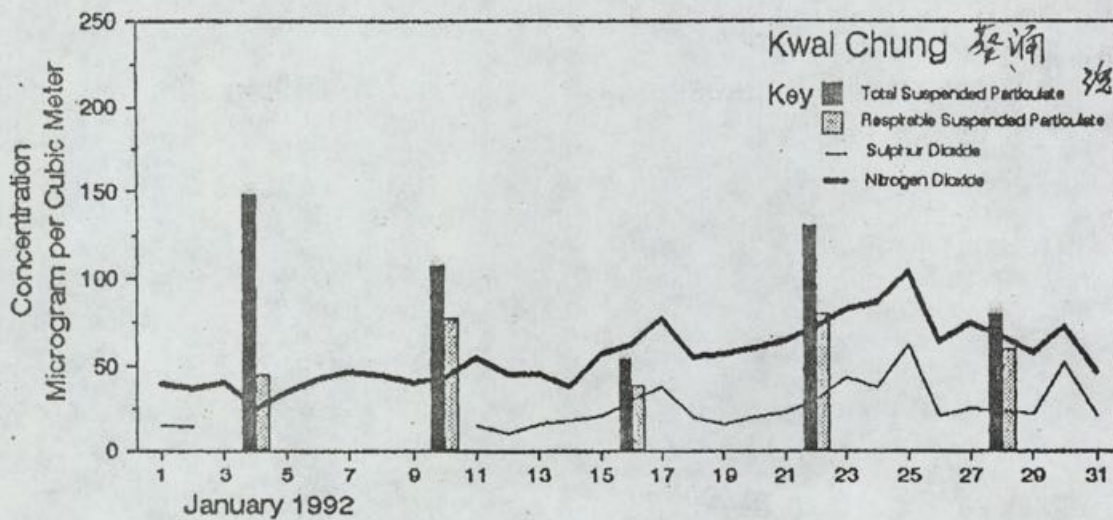
一九九二年一月份空氣質素報告
 Hong Kong Air Quality Report for January 1992



總懸浮粒子
 可吸入懸浮粒子
 二氧化硫
 二氧化氮



總懸浮粒子
 可吸入懸浮粒子
 二氧化硫
 二氧化氮



總懸浮粒子
 可吸入懸浮粒子
 二氧化硫
 二氧化氮

FRIDAY, FEBRUARY 14, 1992

- 19 -

FIVE LAND LOTS FOR SALE BY AUCTION

* * * * *

THE BUILDINGS AND LANDS DEPARTMENT WILL OFFER FIVE LAND LOTS FOR SALE IN THE LAST AUCTION OF THIS FINANCIAL YEAR ON MARCH 13.

THE AUCTION, TO BE HELD IN THE CITY HALL THEATRE, WILL START AT 2.30 PM.

THE FIRST LOT, A 5,320-SQUARE-METRE SITE AT MA TIN ROAD, YUEN LONG, IS DESIGNATED FOR NON-INDUSTRIAL (EXCLUDING GODOWN) PURPOSES.

ACCORDING TO THE BUILDING COVENANT, THE DEVELOPER IS REQUIRED TO COMPLETE A GROSS FLOOR AREA OF NOT LESS THAN 17,000 SQUARE METRES ON OR BEFORE MARCH 31, 1996.

THE SECOND LOT, LOCATED IN AREA 14B, SHA TIN, MEASURES ABOUT 9,500 SQUARE METRES. IT IS FOR GODOWN (EXCLUDING THE STORAGE OF DANGEROUS GOODS) AND PUBLIC LORRY PARK PURPOSES.

A GROSS FLOOR AREA OF NOT LESS THAN 28,500 SQUARE METRES MUST BE COMPLETED ON OR BEFORE MARCH 31, 1996.

THE THIRD LOT, A PRIVATE RESIDENTIAL SITE AT 30 SEVERN ROAD, THE PEAK, MEASURES ABOUT 2,239 SQUARE METRES.

UPON REDEVELOPMENT, THE DEVELOPER SHOULD COMPLETE A GROSS FLOOR AREA OF 921 SQUARE METRES AT THE MAXIMUM WITHIN THREE YEARS OF DEMOLITION ON THE EXISTING STRUCTURES.

THE OTHER TWO LOTS, ALSO FOR PRIVATE RESIDENTIAL DEVELOPMENT, ARE IN THE NEW TERRITORIES.

LOCATED IN AREA 15, SHUI WAI, TAI PO AND MA LING PATH, KAU TO, SHA TIN, AREA 46, THE LOTS MEASURE ABOUT 19,830 AND 7,700 SQUARE METRES RESPECTIVELY.

THE DEVELOPER FOR THE LOT IN TAI PO IS REQUIRED TO COMPLETE A GROSS FLOOR AREA OF NOT LESS THAN 25,000 SQUARE METRES ON OR BEFORE MARCH 31, 1996.

FOR THE SHA TIN LOT, A GROSS FLOOR AREA OF NOT LESS THAN 1,848 SQUARE METRES MUST BE COMPLETED ON OR BEFORE MARCH 31, 1995.

FULL PARTICULARS AND CONDITIONS OF SALE MAY BE OBTAINED FROM AND SALE PLANS INSPECTED AT THE BUILDINGS AND LANDS DEPARTMENT, 14TH FLOOR, MURRAY BUILDING, GARDEN ROAD, HONG KONG AND THE KOWLOON DISTRICT LANDS OFFICES, YAU MA TEI CAR PARK BUILDING, 10TH FLOOR, 250 SHANGHAI STREET, KOWLOON.

- - - - 0 - - - -

/20

NEW PUMPING STATION FOR TRANSFERRING CHINA WATER

* * * * *

THE WATER SUPPLIES DEPARTMENT IS INVITING TENDERS FOR THE CIVIL ENGINEERING AND BUILDING WORKS OF THE MUK WU 'C' PUMPING STATION IN TA KWU LING, A KEY INSTALLATION NEAR THE BORDER FOR RECEIVING AND DISTRIBUTING ADDITIONAL WATER SUPPLY FROM CHINA.

WITH AN ULTIMATE INSTALLED PUMPING CAPACITY OF 2.3 MILLION CUBIC METRES PER DAY, THE PUMPING STATION, THE SECOND LARGEST YET FOR HONG KONG, IS PART OF A \$2,092 MILLION PROJECT TO EXPAND THE FACILITIES FOR TRANSFERRING CHINA WATER.

WORKS UNDER THE CONTRACT WILL INCLUDE THE CONSTRUCTION OF A PUMPING STATION/RECEPTION TANK COMPLEX, LARGE DIAMETER INLET PIPELINES ACROSS THE SHENZHEN RIVER, AN ELECTRICAL SUBSTATION AND OTHER ASSOCIATED WORKS. WORKS ARE EXPECTED TO START IN MAY AND WILL TAKE ABOUT 30 MONTHS TO COMPLETE.

THESE WORKS FORM PART OF STAGE I IN THE PUBLIC WORKS PROGRAMME TO RECEIVE AND DISTRIBUTE WATER SUPPLY FROM CHINA BEYOND 1994.

THIS CONTRACT IS THE THIRD OF A SERIES OF SUCH CONTRACTS.

ON COMPLETION OF THE STAGED EXPANSION, THE RECEPTION AND TRANSFER CAPACITY WILL BE INCREASED FROM THE EXISTING 620 MILLION CUBIC METRES PER YEAR TO 1,100 MILLION CUBIC METRES PER YEAR.

STAGE I OF THE PROJECT COVERS ALL THE MAJOR WORKS REQUIRED FOR COMMISSIONING BY JANUARY 1, 1995.

NOTICE OF TENDER WAS PUBLISHED IN THE GOVERNMENT GAZETTE TODAY (FRIDAY).

FORMS OF TENDER AND FURTHER PARTICULARS MAY BE OBTAINED FROM PHH/SWK WATER CONSULTANTS AT THIRD FLOOR, ASIAN HOUSE, 1 HENNESSY ROAD, HONG KONG.

THE DEADLINE FOR SUBMISSION IS NOON, MARCH 13.

- - - - 0 - - - -

TWO INSHORE WORKS TO START IN NEW TERRITORIES

* * * * *

THE GOVERNMENT GAZETTE TODAY (FRIDAY) PUBLISHED SEPARATE NOTICES DESCRIBING THE EXTENT OF TWO FORESHORE AND SEA-BED AREAS IN THE NEW TERRITORIES WHICH WOULD BE AFFECTED BY INSHORE WORKS.

IN SHAM TSENG, TSUEN WAN, THE GOVERNMENT INTENDS TO PERMIT A PRIVATE COMPANY TO CARRY OUT DREDGING WORKS WITHIN AN AREA OF ABOUT 1,040 SQUARE METRES OF FORESHORE AND SEA-BED FOR THE LAYING OF EFFLUENT DISCHARGE PIPEWORK IN MAY THIS YEAR.

/OFF THE

FRIDAY, FEBRUARY 14, 1992

- 21 -

OFF THE WEST COAST OF TSING YI ISLAND, PERMISSION HAS ALSO BEEN GIVEN BY THE GOVERNMENT FOR AN OIL COMPANY TO START DREDGING WORKS NEXT MONTH WITHIN AN AREA OF ABOUT 3.52 HECTARES OF SEA-BED TO PROVIDE AN APPROACH CHANNEL TO A PIER.

ANY PERSON WHO CONSIDERS THAT HE WOULD BE AFFECTED BY SUCH WORKS MAY SUBMIT EITHER A WRITTEN OBJECTION (FOR THE SHAM TSENG PROJECT) OR A WRITTEN CLAIM FOR COMPENSATION (FOR THE TSING YI PROJECT) TO THE DIRECTOR OF BUILDINGS AND LANDS ON OR BEFORE APRIL 13, THIS YEAR AND FEBRUARY 13, 1993 RESPECTIVELY.

THE NOTICES (IN BOTH ENGLISH AND CHINESE) TOGETHER WITH ITS RELATED PLANS CAN BE SEEN AT THE BUILDINGS AND LANDS DEPARTMENT SURVEY AND MAPPING OFFICE, 14TH FLOOR, MURRAY BUILDING, GARDEN ROAD, HONG KONG (WHERE COPIES CAN BE PURCHASED ON ORDER), AND AT THE RESPECTIVE DISTRICT OFFICES.

- - - - 0 - - - -

ROADWORKS PROPOSED TO IMPROVE WONG TAI SIN TRAFFIC

* * * * *

THE GOVERNMENT PROPOSES TO CONSTRUCT A NEW ROAD CONNECTING SHUNG WAH STREET TO PO KONG VILLAGE ROAD AS PART OF THE PHASE TWO REDEVELOPMENT OF TSZ LOK ESTATE IN WONG TAI SIN, KOWLOON.

A NOTICE CONCERNING THE ROADWORKS IS GAZETTED TODAY (FRIDAY).

THE PROJECT INCLUDES TRAFFIC IMPROVEMENT WORKS TO SHEUNG FUNG STREET, SHUNG WAH STREET AND WAN WAH STREET.

THE PROPOSED ROADWORKS IS SCHEDULED TO START IN DECEMBER NEXT YEAR AND IS EXPECTED TO TAKE ABOUT 32 MONTHS TO COMPLETE.

DURING THE CONSTRUCTION PERIOD, PART OF THE WORKS AREA WILL BE CLOSED TO TRAFFIC, BUT THROUGH VEHICULAR AND PEDESTRIAN TRAFFIC WILL BE MAINTAINED ALONG SHEUNG FUNG STREET, SHUNG WAH STREET AND WAN WAH STREET.

THE PLAN AND SCHEME SHOWING THE PROPOSED ROADWORKS CAN BE SEEN AT THE FOLLOWING GOVERNMENT OFFICES DURING OFFICE HOURS:

* CENTRAL AND WESTERN DISTRICT OFFICE, PUBLIC ENQUIRY SERVICE CENTRE, GROUND FLOOR, HARBOUR BUILDING, 38 PIER ROAD, CENTRAL, HONG KONG;

* DISTRICT LANDS OFFICE, KOWLOON EAST, YAU MA TEI CAR PARK BUILDING, 10TH FLOOR, 250 SHANGHAI STREET, KOWLOON;

/* WCNG TAI SIN

- 22 -

* WONG TAI SIN DISTRICT OFFICE, TSZ WAN SHAN SUB-OFFICE, TSZ WAN SHAN SOUTH ESTATE COMMUNITY CENTRE, SHUNG WAH STREET, FIRST FLOOR, KOWLOON.

ANY PERSON OBJECTING TO THE PROPOSED ROADWORKS SHOULD WRITE TO THE SECRETARY FOR TRANSPORT, CENTRAL GOVERNMENT OFFICES, EAST WING, SECOND FLOOR, LOWER ALBERT ROAD, HONG KONG NOT LATER THAN APRIL 14, THIS YEAR, DESCRIBING HIS INTEREST AND THE MANNER IN WHICH HE ALLEGES HE WILL BE AFFECTED BY THE PROPOSAL.

- - - - 0 - - - -

TENDERS FOR INDOOR GAMES HALL AND RURAL CENTRE

* * * * *

THE ARCHITECTURAL SERVICES DEPARTMENT IS INVITING TENDERS FOR THE CONSTRUCTION OF AN INDOOR GAMES HALL IN LAM TIN SOUTH, KOWLOON AND A RURAL CENTRE IN TA KWU LING, THE NEW TERRITORIES.

NOTICES OF THE TWO TENDERS WERE GAZETTED TODAY (FRIDAY).

WORKS UNDER THE CONTRACT FOR THE INDOOR GAMES CENTRE WILL INCLUDE THE CONSTRUCTION OF A THREE-STOREY GAMES HALL AND THE ADJACENT EXTERNAL LANDSCAPE WORKS.

THE HALL WILL ACCOMMODATE SEVEN SQUASH COURTS, CHANGING ROOMS AND THE ADMINISTRATION OFFICE ON THE GROUND FLOOR, A GAMES ROOM AND A DANCE ROOM ON THE FIRST FLOOR AND THE MULTI-PURPOSE ARENA ON THE SECOND FLOOR.

WORKS FOR THE PROJECT ARE EXPECTED TO START IN MAY AND WILL TAKE ABOUT 18 MONTHS TO COMPLETE.

THE RURAL CENTRE PROJECT WILL INCLUDE THE CONSTRUCTION OF A THREE-STOREY GOVERNMENT BUILDING COMPRISING A MULTI-PURPOSE HALL, A JUNIOR POLICE CALL ACTIVITIES CENTRE, A CLINIC, A POLICE REPORTING COUNTER, A SOCIAL WELFARE DEPARTMENT SUB-OFFICE, A LIBRARY AND A SUB-OFFICE FOR THE NORTH DISTRICT OFFICE.

WORKS FOR THIS PROJECT ARE EXPECTED TO START IN APRIL AND WILL TAKE ABOUT A YEAR TO COMPLETE.

FORMS OF TENDER AND FURTHER PARTICULARS ON THE TWO PROJECTS MAY BE OBTAINED FROM THE ARCHITECTURAL SERVICES DEPARTMENT, 34TH FLOOR, QUEENSWAY GOVERNMENT OFFICES, 66 QUEENSWAY, HONG KONG.

DEADLINE FOR SUBMISSION FOR BOTH TENDERS IS NOON, MARCH 6.

- - - - 0 - - - -

FRIDAY, FEBRUARY 14, 1992

- 23 -

TENDERS INVITED FOR BUS LANE WORKS

* * * * *

THE HIGHWAYS DEPARTMENT IS INVITING TENDERS FOR THE LINKING OF THE EXISTING BUS ONLY LANES AT HUNG MUI KUK INTERCHANGE, SHA TIN.

THE WORKS MAINLY INCLUDE THE WIDENING OF A 300-METRE SECTION OF THE KOWLOON-BOUND LANE OF HUNG MUI KUK ROAD AND LION ROCK TUNNEL ROAD AT THE INTERCHANGE SO AS TO FURTHER SHORTEN THE BUS JOURNEY TIME.

CONSTRUCTION IS SCHEDULED TO START IN APRIL THIS YEAR AND IS EXPECTED TO TAKE 10 MONTHS TO COMPLETE.

THE TENDER NOTICE IS GAZETTED TODAY (FRIDAY).

TENDER FORMS AND FURTHER PARTICULARS MAY BE OBTAINED FROM REGIONAL HIGHWAY ENGINEER/NEW TERRITORIES, HIGHWAYS DEPARTMENT ON 11TH FLOOR, CANTON ROAD GOVERNMENT OFFICES, 393 CANTON ROAD, KOWLOON.

TENDERS MUST BE ADDRESSED TO THE CHAIRMAN, PUBLIC WORKS TENDER BOARD, AND PLACED IN THE PUBLIC WORKS TENDER BOX ON 34TH FLOOR, QUEENSWAY GOVERNMENT OFFICES, 66 QUEENSWAY, HONG KONG BEFORE NOON ON FRIDAY, MARCH 6, 1992.

- - - - 0 - - - -

OLD-TYPE IDENTITY CARDS DECLARED INVALID

* * * * *

THE IMMIGRATION DEPARTMENT ANNOUNCED TODAY (FRIDAY) THAT ALL OLD-TYPE IDENTITY CARDS ISSUED BEFORE JULY 1, 1987 TO WOMEN BORN IN 1928 OR BEFORE WILL BECOME INVALID FROM FEBRUARY 24.

A NOTICE TO THIS EFFECT WAS PUBLISHED IN THE GOVERNMENT GAZETTE TODAY.

THIS IS THE 11TH BATCH OF OLD-TYPE IDENTITY CARDS ISSUED BEFORE JULY 1, 1987 TO BE DECLARED INVALID.

A SPOKESMAN FOR THE IMMIGRATION DEPARTMENT SAID. ONCE AN OLD CARD WAS DECLARED INVALID, IT WOULD NOT BE ACCEPTED FOR ANY PURPOSE. FOR EXAMPLE, WOMEN OF THE ABOVE AGE GROUP HOLDING AN INVALID OLD-TYPE IDENTITY CARD WOULD NOT BE ABLE TO USE IT FOR TRAVELLING ABROAD OR APPLYING FOR A TRAVEL DOCUMENT.

"THOSE WHO HAVE NOT YET RENEWED THEIR OLD-TYPE IDENTITY CARDS DUE TO ABSENCE FROM HONG KONG OR OTHER REASONS SHOULD IMMEDIATELY GO TO A REGISTRATION OF PERSONS OFFICE (EXCEPT MA TAU WAI OFFICE) FOR RENEWAL," THE SPOKESMAN SAID.

/"THESE CASES

"THESE CASES WILL BE LOOKED INTO AND DEALT WITH ON THEIR OWN MERITS," HE ADDED.

THE SPOKESMAN REITERATED THAT THERE WOULD BE NO AMNESTY FOR ILLEGAL IMMIGRANTS.

- - - - 0 - - - -

TWO DRIVING TEST CENTRES CLOSED

* * * * *

THE EASTERN HOSPITAL ROAD AND SO KUN PO DRIVING TEST CENTRES ADMINISTERED BY THE TRANSPORT DEPARTMENT WILL BE CLOSED FROM APRIL 6 TO FACILITATE THE RE-DEVELOPMENT OF THE HONG KONG STADIUM.

DUE TO THE CLOSURE, APPLICATIONS FOR DRIVING TESTS WILL NOT BE SCHEDULED AT THESE CENTRES WITH IMMEDIATE EFFECT, A SPOKESMAN FOR THE DEPARTMENT SAID TODAY (FRIDAY).

DRIVING TEST CANDIDATES WHO HAD BEEN SCHEDULED TO TAKE THEIR TESTS AT THESE TWO CENTRES BEYOND APRIL 6 WOULD BE NOTIFIED INDIVIDUALLY ON REVISED ARRANGEMENTS, THE SPOKESMAN ADDED.

ENQUIRIES CAN BE MADE ON TEL. 801 5980 OR AT THE HONG KONG DRIVING TEST OFFICE AT GROUND FLOOR, 2 MURRAY ROAD, CENTRAL.

- - - - 0 - - - -

EXHIBITION ON LOCAL LAW AND LEGAL SYSTEM

* * * * *

AN EXHIBITION TO ENHANCE PUBLIC UNDERSTANDING OF THE LOCAL LAW AND LEGAL SYSTEM WILL BE OPENED AT THE QUEENSWAY EXHIBITION HALL, WAN CHAI, AT NOON TOMORROW (SATURDAY).

THE TWO-DAY EXHIBITION IS JOINTLY ORGANISED BY THE LOCAL CROWN COUNSEL ASSOCIATION AND THE COMMUNITY YOUTH CLUB OF THE EDUCATION DEPARTMENT. IT IS SPONSORED BY THE LAW'S FOUNDATION.

MORE THAN 150 STUDENTS FROM 16 SECONDARY SCHOOLS HAD, OVER THE PAST FEW MONTHS, HELPED PREPARE THE EXHIBITION MATERIALS UNDER THE GUIDANCE OF MEMBERS OF THE ASSOCIATION AND THE DEPARTMENT.

THE CHIEF JUSTICE, SIR TI LIANG YANG; THE ATTORNEY-GENERAL, MR JEREMY MATHEWS; AND THE LAW'S FOUNDATION CHAIRMAN MR RAYMOND LAW KA-KUI; WILL OFFICIATE AT THE OPENING CEREMONY OF THE EXHIBITION.

- 25 -

THE OPENING HOURS WILL BE FROM NOON TO 4 PM TOMORROW AND FROM 10.30 AM TO 4 PM ON SUNDAY.

- - - - -

ATTENTION NEWS EDITORS:

MEDIA REPRESENTATIVES ARE INVITED TO COVER THE OPENING CEREMONY OF THE SECONDARY SCHOOL STUDENTS' LAW EXHIBITION AT THE EXTRANCE HALL, SECOND FLOOR, QUEENSWAY EXHIBITION HALL, WAN CHAI STARTING AT 11 AM.

- - - - 0 - - - -

WAN CHAI ROAD SAFETY CARNIVAL

* * * * *

A WAN CHAI CARNIVAL TO SPREAD ROAD SAFETY MESSAGES WILL BE HELD IN SOUTHORN PLAYGROUND FROM 2 PM TO 5 PM TOMORROW (SATURDAY).

THE CARNIVAL IS ORGANISED BY THE WAN CHAI DISTRICT BOARD, DISTRICT OFFICE AND THE POLICE. ADMISSION IS FREE.

THE AUXILIARY MEDICAL SERVICES WILL STAGE A MARCHING BAND PERFORMANCE TO BE FOLLOWED BY LION DANCES, SINGING AND TAEKWONDO DEMONSTRATION BY JUNIOR POLICE CALL MEMBERS.

THERE WILL ALSO BE 10 GAME STALLS AND A ROAD SAFETY QUIZ TO ENHANCE PARTICIPANTS' AWARENESS ON THE IMPORTANCE OF OBSERVING ROAD RULES.

THE WAN CHAI DISTRICT OFFICER, MR PETER MANN; WAN CHAI DB CHAIRMAN, MRS PEGGY LAM; THE DISTRICT'S POLICE COMMANDER, MR LAM KIN AND THE SENIOR STAFF OFFICER, TRAFFIC (HONG KONG ISLAND), MR DANNY ROBINSON, WILL OFFICIATE AT THE OPENING CEREMONY, BEGINNING AT 2.30 PM.

- - - - -

ATTENTION NEWS EDITORS:

YOUR REPRESENTATIVES ARE INVITED TO COVER THE WAN CHAI DISTRICT ROAD SAFETY CARNIVAL OPENING CEREMONY AT 2.30 PM TOMORROW (SATURDAY) AT SOUTHORN PLAYGROUND, WAN CHAI.

- - - - 0 - - - -

FRIDAY, FEBRUARY 14, 1992

- 26 -

EFFORTS ON WORK SAFETY STEPPED UP
* * * * *

LABOUR DEPARTMENT OFFICERS MADE MORE THAN 17,800 VISITS TO FACTORIES IN NOVEMBER AND DECEMBER LAST YEAR TO PROMOTE FIRE PREVENTION AND SAFE USE OF CHEMICALS IN INDUSTRY.

CHIEF FACTORY INSPECTOR CHAN TAT-KING SAID TODAY (FRIDAY) THAT DURING THE TWO-MONTH FIRE AND CHEMICAL SAFETY CAMPAIGN, FACTORY INSPECTORS REMINDED EMPLOYERS AND WORKERS OF THEIR DUTIES UNDER THE SAFETY REGULATIONS AND ASSISTED THEM IN MEETING THE REQUIREMENTS.

IN ADDITION, MR CHAN SAID, 5,300 SPECIALLY-DESIGNED NOTICES ON THE SAFE HANDLING OF CHEMICALS WERE DISTRIBUTED TO FACTORY MANagements FOR DISPLAY AT PROMINENT POSITIONS IN THE WORKPLACE.

HE SAID 400 SUMMONSES WERE ISSUED AGAINST OFFENDING EMPLOYERS UNDER THE FACTORIES AND INDUSTRIAL UNDERTAKINGS (FIRE PRECAUTIONS IN NOTIFIABLE WORKPLACES) AND (DANGEROUS SUBSTANCES) REGULATIONS AND OTHER RELATED REGULATIONS.

HE CALLED ON FACTORY PROPRIETORS TO STEP UP THEIR EFFORTS IN FIRE PREVENTION AND SAFE HANDLING OF DANGEROUS CHEMICALS WHICH POSED HIGH FIRE AND EXPLOSION RISKS PARTICULARLY DURING THE DRY, WINTER SEASON.

FURTHER INFORMATION ON CHEMICAL SAFETY AND FIRE PREVENTION CAN BE OBTAINED FROM THE INDUSTRIAL SAFETY TRAINING CENTRE AT HARBOUR BUILDING, 13TH FLOOR, 38 PIER ROAD, CENTRAL, OR FROM ANY BRANCH OFFICE OF THE FACTORY INSPECTORATE.

- - - - 0 - - - -

FUN FAIR FOR YUEN LONG RESIDENTS
* * * * *

A LUNAR NEW YEAR FUN FAIR SPECIALLY FOR YUEN LONG RESIDENTS WILL BE HELD ON SUNDAY (FEBRUARY 16) AFTERNOON AT THE LONG PING ESTATE HEXAGONAL SQUARE.

THE CARNIVAL, FEATURING SINGING PERFORMANCES, LION DANCES, MAGIC SHOWS AND GAME STALLS, WILL BEGIN AT 2 PM. ADMISSION IS FREE.

THE YUEN LONG DISTRICT BOARD CHAIRMAN, MR TAI KUEN; DISTRICT OFFICER, MR ROBIN IP, AND THE DISTRICT SOCIAL WELFARE OFFICER, MR PETER LIN, WILL OFFICIATE.

/THE FUNCTION

FRIDAY, FEBRUARY 14, 1992

- 27 -

THE FUNCTION HAS BEEN ORGANISED BY THE YUEN LONG DISTRICT OFFICE, THE MUTUAL AID COMMITTEES OF LONG PING ESTATE, AND THE YUEN LONG TOWN HALL.

- - - - -

ATTENTION NEWS EDITORS:

MEDIA REPRESENTATIVES ARE INVITED TO COVER THE LUNAR NEW YEAR FUN FAIR TO BE HELD AT THE LONG PING ESTATE HEXAGONAL SQUARE, YUEN LONG ON SUNDAY (FEBRUARY 16), BEGINNING AT 2 PM.

- - - - 0 - - - -

HONG KONG GOVERNMENT EXCHANGE FUND
MONEY MARKET OPERATIONS
* * * * *

	DATE	\$ MILLION
	----	-----
CLOSING BALANCE IN THE ACCOUNT ON	13.2.92	600
EFFECT OF FORWARDS TO BE SETTLED ON	14.2.92	+1446
EFFECT OF OPERATIONS THIS MORNING		-1446
EFFECT OF OPERATIONS THIS AFTERNOON		NEUTRAL

TRADE WEIGHTED INDEX 111.2 *+0.3* 14.2.92

HONG KONG GOVERNMENT EXCHANGE FUND

EF BILLS			HONG KONG GOVERNMENT BONDS			
TERMS	YIELD	TERM	ISSUE	COUPON	PRICE	YIELD
1 WEEK	3.87 PCT	21 MONTHS	2311	6.25	101.47	5.43
1 MONTH	3.90 PCT					
3 MONTHS	3.93 PCT					
6 MONTHS	4.05 PCT					
12 MONTHS	4.52 PCT					

TOTAL TURNOVER OF BILLS AND BONDS - 5,715 MN

CLOSED 14 FEBRUARY 1992

- - - - 0 - - - -