



## DAILY INFORMATION BULLETIN

ISSUED BY GOVERNMENT INFORMATION SERVICES  
BEACONSFIELD HOUSE, HONG KONG. TEL: 5-233191

THURSDAY, MAY 1, 1986

<u>CONTENTS</u>	<u>PAGE NO.</u>
FEBRUARY RETAIL SALES SURVEY RESULTS OUT .....	1
EXPO '86 -- HONG KONG SAYS IT WITH POSTCARDS .....	5
PHYSICAL CLOSURE OF UNLICENSED FOOD PREMISES .....	6
RUNDOWN ON URBCO'S PLANNED CIVIC PROJECTS .....	6
FOUR-DAY SUSPENSION OF FOOD SHOP LICENCE UPHELD .....	8
CHANGE TO LOOK AT WORKING WORLD .....	9
VISION OF RELIEF TO LION ROCK CONGESTION .....	9
SUMMER WORK FOR TECHNICAL INSTITUTE STUDENTS .....	10
CIVIC EDUCATION CARTOONS ON DISPLAY .....	11
ROUTE FOR CHARITY WALK .....	11
DETAILS OF TV PROGRAMME .....	12

THURSDAY, MAY 1, 1986

- 1 -

FEBRUARY RETAIL SALES SURVEY RESULTS OUT  
\* \* \* \* \*

THE VALUE OF TOTAL RETAIL SALES IN FEBRUARY 1986, ESTIMATED AT \$5 547 MILLION, WAS 5 PER CENT LOWER THAN IN FEBRUARY 1985, WHILE THEIR VOLUME WAS 8 PER CENT LOWER, ACCORDING TO THE PROVISIONAL SURVEY RESULTS RELEASED TODAY (THURSDAY) BY THE CENSUS AND STATISTICS DEPARTMENT.

THIS COMPARISON, HOWEVER, IS AFFECTED BY THE DIFFERENT TIMING OF THE LUNAR NEW YEAR, WHICH COMMENCED ON FEBRUARY 9 THIS YEAR BUT ON FEBRUARY 20 LAST YEAR.

COMPARED WITH FEBRUARY 1985, RETAIL SALES OF FUELS INCREASED BY 1 PER CENT IN BOTH VALUE AND VOLUME TERMS. HOWEVER, CONSUMER DURABLES RECORDED DECREASES OF 3 PER CENT IN SALES VALUE AND 7 PER CENT IN SALES VOLUME. CLOTHING, FOOTWEAR AND ALLIED PRODUCTS FELL BY 4 PER CENT IN SALES VALUE AND 9 PER CENT IN SALES VOLUME.

RETAIL SALES OF FOODSTUFFS, ALCOHOLIC DRINKS AND TOBACCO DROPPED BY 5 PER CENT IN VALUE AND 6 PER CENT IN VOLUME. +OTHER CONSUMER GOODS+ WENT DOWN BY 7 PER CENT IN SALES VALUE AND 10 PER CENT IN SALES VOLUME.

ANALYSED BY SELECTED TRADES, RETAIL SALES OF SUPERMARKETS INCREASED SLIGHTLY IN BOTH VALUE AND VOLUME TERMS. MOTOR VEHICLES REGISTERED A RISE IN SALES VALUE BUT A FALL IN SALES VOLUME.

RETAIL SALES OF CONSUMER DURABLES OTHER THAN MOTOR VEHICLES SHOWED SLIGHT DECREASES, WHILE THOSE OF DEPARTMENT STORES EXPERIENCED MODERATE DECREASES IN BOTH VALUE AND VOLUME TERMS.

COMPARING THE THREE-MONTH PERIOD DECEMBER 1985-FEBRUARY 1986 WITH THE SAME PERIOD 12 MONTHS PREVIOUSLY, TOTAL RETAIL SALES INCREASED BY 2 PER CENT IN VALUE BUT FELL BY 1 PER CENT IN VOLUME. RETAIL SALES OF CLOTHING, FOOTWEAR AND ALLIED PRODUCTS ROSE BY 8 PER CENT IN VALUE AND 3 PER CENT IN VOLUME. CONSUMER DURABLES WENT UP BY 4 PER CENT IN SALES VALUE BUT RECORDED NO CHANGE IN SALES VOLUME. FUELS RECORDED INCREASES OF 2 PER CENT IN SALES VALUE AND 1 PER CENT IN SALES VOLUME. FOODSTUFFS, ALCOHOLIC DRINKS AND TOBACCO SHOWED A 2 PER CENT INCREASE IN SALES VALUE BUT NO CHANGE IN SALES VOLUME.

RETAIL SALES OF +OTHER CONSUMER GOODS+ FELL BY 1 PER CENT IN SALES VALUE AND 3 PER CENT IN SALES VOLUME. RETAIL SALES BY SUPERMARKETS INCREASED MODERATELY IN BOTH VALUE AND VOLUME TERMS WHILE THOSE OF MOTOR VEHICLES ROSE MODERATELY IN VALUE AND SLIGHTLY IN VOLUME.

/CONSUMER DURABLES .....

CONSUMER DURABLES OTHER THAN MOTOR VEHICLES SHOWED A SLIGHT INCREASE IN SALES VALUE BUT A SLIGHT DROP IN SALES VOLUME. DEPARTMENT STORES HAD SLIGHT DECREASES IN BOTH SALES VALUE AND VOLUME.

WHEN COMPARED WITH JANUARY 1986, AND BEARING IN MIND THAT THIS COMPARISON IS AFFECTED BY SEASONAL FACTORS, TOTAL RETAIL SALES FOR FEBRUARY 1986 DECLINED BY 10 PER CENT IN VALUE AND 11 PER CENT IN VOLUME. RETAIL SALES OF FOODSTUFFS, ALCOHOLIC DRINKS AND TOBACCO REMAINED UNCHANGED IN VALUE BUT DECREASED BY 3 PER CENT IN VOLUME. FUELS AND CLOTHING, FOOTWEAR AND ALLIED PRODUCTS HAD DECREASES OF 11 PER CENT IN BOTH SALES VALUE AND VOLUME.

+OTHER CONSUMER GOODS+ FELL BY 11 PER CENT IN SALES VALUE AND 12 PER CENT IN SALES VOLUME. CONSUMER DURABLES DROPPED BY 17 PER CENT IN SALES VALUE AND 18 PER CENT IN SALES VOLUME.

IN BOTH VALUE AND VOLUME TERMS, RETAIL SALES OF SUPERMARKETS INCREASED MODERATELY WHILE THOSE OF MOTOR VEHICLES AND OF CONSUMER DURABLES OTHER THAN MOTOR VEHICLES RECORDED MODERATE DECREASES. A SUBSTANTIAL DECLINE IN SALES VALUE AND VOLUME WAS REGISTERED BY DEPARTMENT STORES.

TABLE 1 PRESENTS THE REVISED TOTAL SALES FIGURE FOR JANUARY 1986 AND THE PROVISIONAL FIGURE FOR FEBRUARY 1986.

TABLE 2 SHOWS THE VALUE AND VOLUME INDEXES OF RETAIL SALES BY MAJOR TRADE GROUPS AND SELECTED TRADES (WHICH FORM PART OF THE RELEVANT MAJOR TRADE GROUPS), WITH AVERAGE MONTHLY RETAIL SALES IN 1980 TAKEN AS 100. COMPARISONS OF FEBRUARY 1986 RESULTS WITH THOSE OF JANUARY 1986 AND FEBRUARY 1985 AND COMPARISONS OF TOTAL RETAIL SALES IN THE THREE-MONTH PERIOD DECEMBER 1985 - FEBRUARY 1986 WITH THOSE IN THE SAME PERIOD 12 MONTHS PREVIOUSLY ARE ALSO GIVEN. GRAPHS 1 AND 2 DEPICT THE INDEX MOVEMENTS OF TOTAL RETAIL SALES FROM JANUARY 1983 TO JANUARY 1986.

THE REPORT CONTAINING THE ANALYSIS OF THE FEBRUARY 1986 SURVEY RESULTS IS ON SALE AT THE GOVERNMENT PUBLICATION SALES CENTRE, GENERAL POST OFFICE BUILDING, CONNAUGHT PLACE, AT \$1 PER COPY.

ENQUIRIES ABOUT THE SURVEY RESULTS MAY BE DIRECTED TO THE WHOLESALE AND RETAIL TRADE STATISTICS SECTION OF THE CENSUS AND STATISTICS DEPARTMENT (TEL. NO.: 3-7216024).

- - - - -

TABLE 1 : TOTAL RETAIL SALES

Total Retail Sales for February 1986 (Provisional Figure) = HK\$5 547 million  
for January 1986 (Revised Figure) = HK\$6 147 million

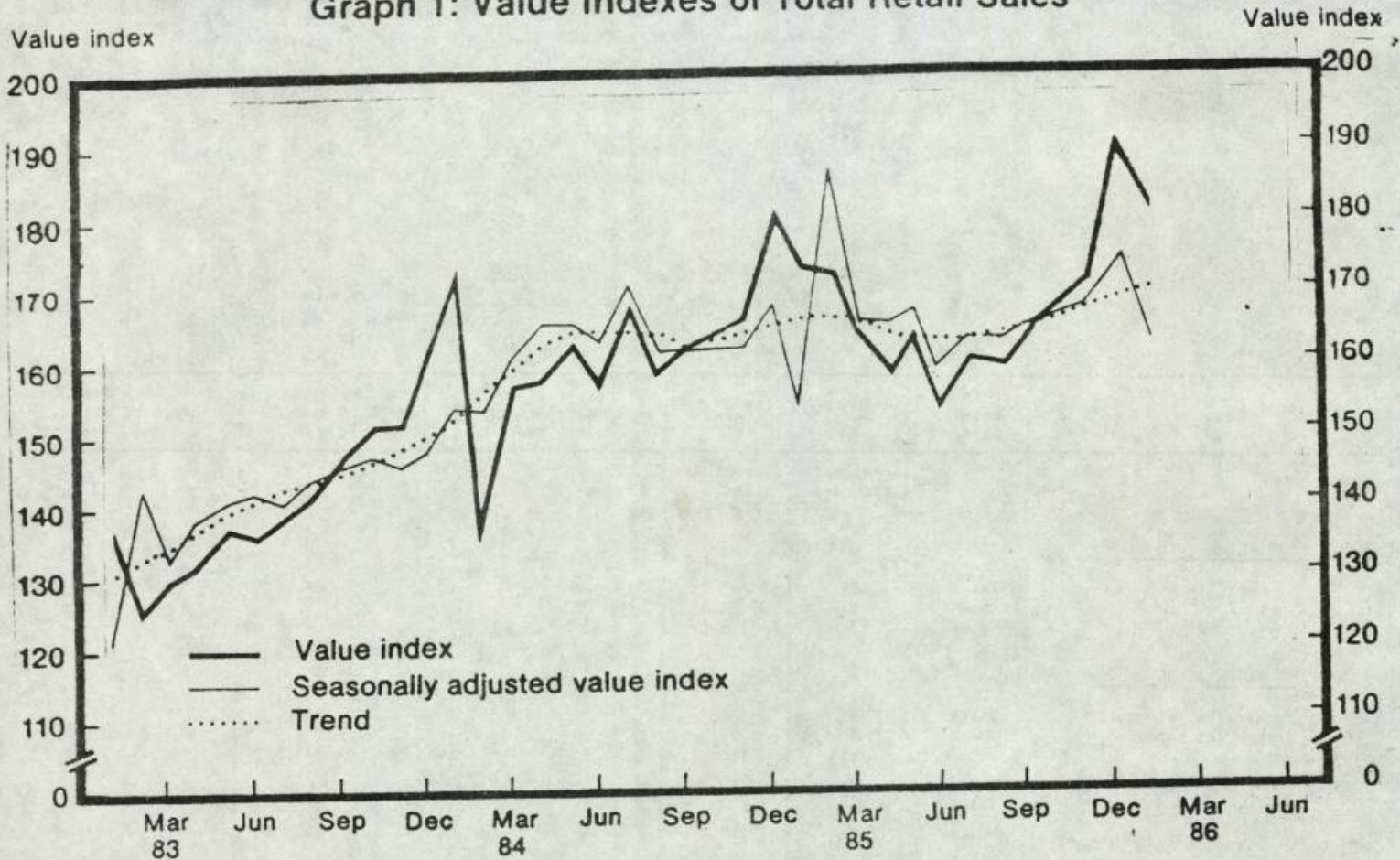
TABLE 2 : VALUE AND VOLUME INDEXES OF RETAIL SALES  
FOR JANUARY AND FEBRUARY 1986

(Monthly average of 1980 = 100)

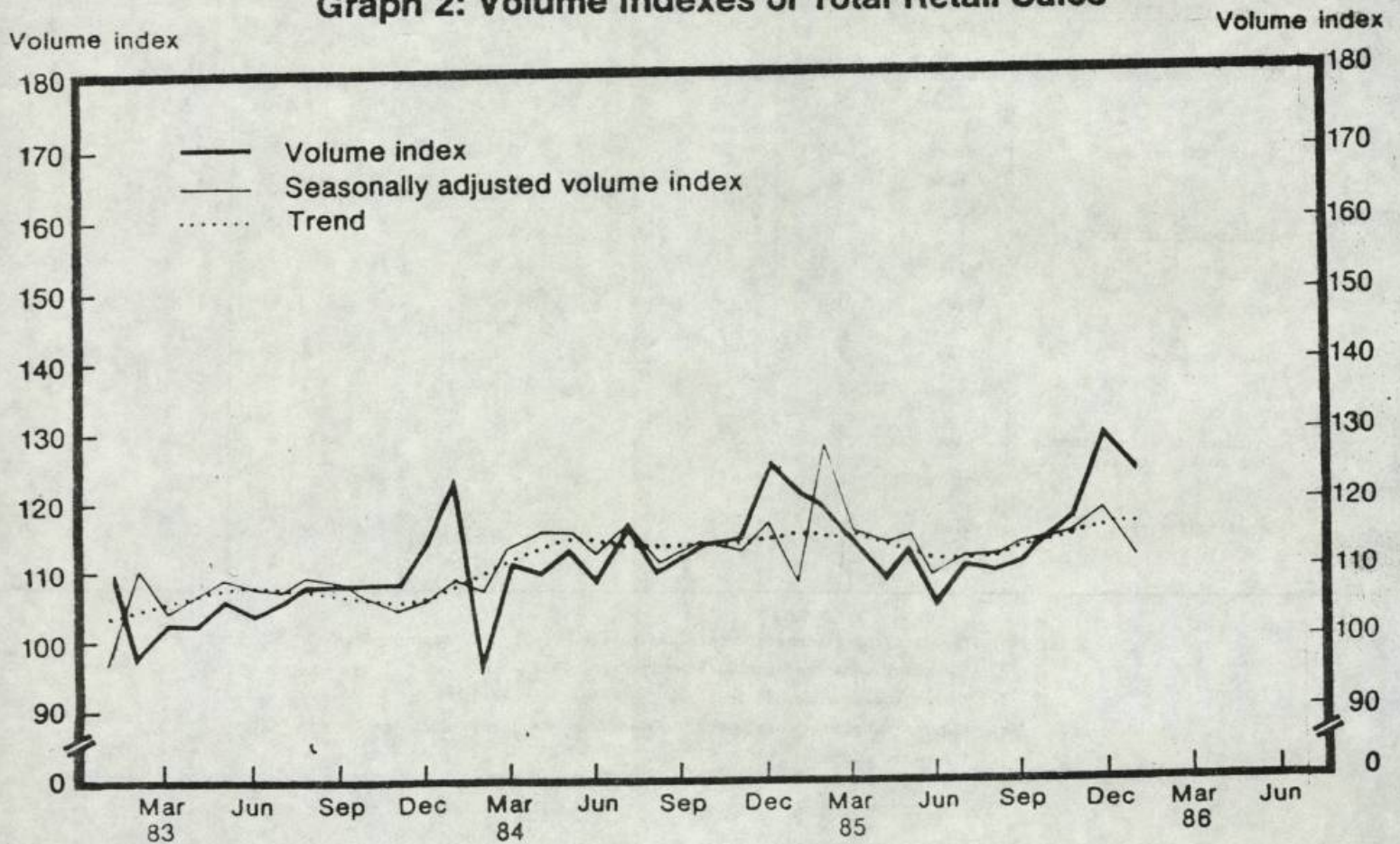
Item	Index of Retail Sales	January 1986	February 1986	February 1986 compared with January 1986		February 1986 compared with February 1985		Dec. 85 - Feb. 86 compared with Dec. 84 - Feb. 85	
		(Revised figures)	(Provisional figures)	Points	%	Points	%	Points	%
<b>(A) FOR ALL RETAIL TRADES</b>									
	Value	181	163	- 18	- 10	- 9	- 5	+ 3	+ 2
	Volume	123	110	- 13	- 11	- 10	- 8	- 1	- 1
<b>(B) BY MAJOR TRADE GROUPS</b>									
Foodstuffs, alcoholic drinks and tobacco	Value	184	184	*	*	- 9	- 5	+ 3	+ 2
	Volume	121	118	- 3	- 3	- 8	- 6	*	*
Fuels	Value	192	170	- 22	- 11	+ 2	+ 1	+ 3	+ 2
	Volume	124	110	- 14	- 11	+ 1	+ 1	+ 1	+ 1
Clothing, footwear and allied products	Value	265	235	- 30	- 11	+ 9	- 4	+ 20	+ 8
	Volume	162	145	- 18	- 11	- 14	- 9	+ 4	+ 3
Consumer durables	Value	170	140	- 30	- 17	- 5	- 3	+ 5	+ 4
	Volume	121	99	- 22	- 18	- 7	- 7	*	*
Other consumer goods	Value	168	150	- 18	- 11	- 12	- 7	- 2	- 1
	Volume	118	104	- 14	- 12	- 12	- 10	- 4	- 3
<b>(C) BY SELECTED TRADES</b>									
Supermarkets	Value	333	375	+ 42	+ 13	+ 24	+ 7	+ 46	+ 15
	Volume	200	225	+ 25	+ 12	+ 8	+ 4	+ 22	+ 12
Motor vehicles	Value	111	91	- 20	- 18	+ 6	+ 7	+ 11	+ 12
	Volume	61	50	- 12	- 19	- 1	- 2	+ 3	+ 5
Consumer durables other than motor vehicles	Value	210	174	- 36	- 17	- 12	- 6	+ 2	+ 1
	Volume	162	133	- 28	- 17	- 12	- 8	- 1	- 1
Department stores	Value	212	158	- 53	- 25	- 30	- 16	- 5	- 3
	Volume	149	111	- 39	- 26	- 25	- 19	- 8	- 5

- Notes :**
- "Foodstuffs, alcoholic drinks and tobacco" includes "supermarkets".
  - "Consumer durables" includes "motor vehicles".
  - "Other consumer goods" includes "department stores".
  - Figures denoting changes are derived from the unrounded index figures.
  - \* denotes no change.

Graph 1: Value Indexes of Total Retail Sales



Graph 2: Volume Indexes of Total Retail Sales



Notes: (1) Monthly average of 1980 = 100.

(2) The seasonally adjusted value and volume indexes and Henderson trends are compiled using the X-11 variant seasonal adjustment program of the U.S. Bureau of the Census.

THURSDAY, MAY 1, 1986

EXPO '86 -- HONG KONG SAYS IT WITH POSTCARDS

\* \* \* \* \*

WITH A COLLECTIVE VOICE, HONG KONG PEOPLE ARE TELLING THE WORLD THEY ARE HAPPY TO LIVE HERE AND VALUE WHAT THEY HAVE ACHIEVED.

AND THEY'RE SAYING IT WITH POSTCARDS -- IN PROSE AND IN ART FORM.

OFFICIATING THIS (THURSDAY) MORNING AT THE FOUR-DAY EXHIBITION OF THE BEST POSTCARDS SUBMITTED SO FAR IN THE 'HONG KONG IN TOUCH WITH THE WORLD' PROJECT, THE SECRETARY FOR ADMINISTRATIVE SERVICES AND INFORMATION, MR JAMES SO, SAID THE GENERAL PUBLIC, IN PARTICULAR SCHOOLS, WERE QUICK TO SUPPORT THE IDEA.

THE MASSIVE PEN-FRIEND OPERATION, GEARED FOR THE ESTIMATED 17 MILLION VISITORS TO EXPO '86 IN VANCOUVER BETWEEN MAY 2 AND OCTOBER 13, HAS DRAWN AN OVERWHELMING RESPONSE WITH MORE THAN 330 000 CARDS RECEIVED SO FAR.

OF THE EXHIBITION, MR SO SAID +ON DISPLAY IS A REPRESENTATIVE SAMPLE OF THE QUALITY OF CARDS WE HAVE RECEIVED. WHAT WILL STRIKE ANY OBSERVER IS THE LOVE AND PRIDE THE DRAWINGS ON THESE CARDS EXPRESS -- LOVE FOR HONG KONG AND PRIDE IN BELONGING TO THIS VERY SPECIAL COMMUNITY.+

HE ADDED THAT PEOPLE OF ALL AGES HAD SENT IN CARDS, EACH AN INDIVIDUAL EXPRESSION OF THE PREVAILING SENTIMENT OF GOODWILL WITH WHICH THE COMMUNITY WAS ENDOWED.

MR SO POINTED OUT THAT THE DRIVE FOR CONTRIBUTION TO THIS +NEW FORM+ OF GLOBAL COMMUNICATION WAS CONTINUING.

+WE ARE HOPING THAT THE IDEA WILL CATCH ON EVEN MORE WIDELY THAN IT ALREADY HAS, AND THAT THOSE WHO HAVE NOT YET JOINED IT WILL DO SO,+ MR SO SAID.

MEANWHILE, A SPOKESMAN FOR THE ORGANISERS SAID BLANK POSTCARDS WOULD BE AVAILABLE UP TO THE END OF SEPTEMBER AND COULD BE COLLECTED FROM THREE POINTS -- THE MAIN ENTRANCE TO THE GOVERNMENT INFORMATION SERVICE HEADQUARTERS, QUEEN'S ROAD, ITS CO-ORDINATING CENTRE ON THE FIRST FLOOR, WEST WING AND AT THE GOVERNMENT PUBLICATIONS CENTRE IN THE GENERAL POST OFFICE BUILDING IN CONNAUGHT PLACE.

DURING THE FOUR-DAY EXHIBITION, A FOURTH DISPENSING-COLLECTION BOOTH WOULD BE AVAILABLE AT THE LANDMARK'S WEST BRIDGE.

- - - - 0 - - - -

PHYSICAL CLOSURE OF UNLICENSED FOOD PREMISES

\* \* \* \*

THE URBAN SERVICES DEPARTMENT WILL SEEK DRAFTING APPROVAL FROM THE SECRETARY FOR MUNICIPAL SERVICES FOR THE NECESSARY AMENDMENT TO THE LAW TO ENABLE PHYSICAL CLOSURE OF UNLICENSED FOOD PREMISES.

THIS WAS AGREED TODAY BY THE URBAN COUNCIL'S FOOD HYGIENE SELECT COMMITTEE, CHAIRED BY MISS CECILIA YEUNG, AT ITS MONTHLY OPEN MEETING.

THE COMMITTEE WAS TOLD THAT UNDER THE PUBLIC HEALTH AND MUNICIPAL SERVICES ORDINANCE, A MAGISTRATE'S COURT WAS EMPOWERED TO MAKE EITHER A CLOSURE ORDER OR A PROHIBITION ORDER AGAINST UNLICENSED FOOD PREMISES.

PREVIOUSLY, THE DEPARTMENT'S PRACTICE WAS TO OBTAIN A CLOSURE ORDER AND AT THE SAME TIME AN ORDER FROM THE COURT ADDRESSED TO THE DEPARTMENT AND THE POLICE REQUIRING THEM TO PHYSICALLY CLOSE THE FOOD PREMISES CONCERNED.

HOWEVER, DOUBTS WERE EXPRESSED AS TO THE LEGALITY OF THIS PRACTICE.

SUBSEQUENTLY, THE EXISTING PRACTICE OF THE DEPARTMENT WAS TO APPLY FOR PROHIBITION ORDERS ONLY AGAINST THE USE OF PREMISES FOR FOOD BUSINESS WITHOUT A LICENCE.

COMMITTEE MEMBERS WERE TOLD THAT THIS WAS NOT PROVEN TO BE AN EFFECTIVE DETERRENT TO THE CONTINUED OPERATION OF SUCH PREMISES ALTHOUGH A BREACH OF SUCH AN ORDER INVOLVED A GREATER MAXIMUM PENALTY THAN THE MERE CARRYING ON OF THE UNLICENSED BUSINESS.

IN 1985, THERE WERE 25 SUSPENDED PRISON SENTENCES AND SIX ACTUAL PRISON SENTENCES IMPOSED IN CASES INVOLVING SUCH BREACHES.

- - - - 0 - - - -

RUNDOWN ON URBCO'S PLANNED CIVIC PROJECTS

\* \* \* \* \*

THE URBAN COUNCIL THIS AFTERNOON BEGAN ITS TWO-MONTH CONSULTATION EXERCISE WITH ALL 10 URBAN DISTRICT BOARDS ON THE COUNCIL'S CAPITAL WORKS PROGRAMME.

THE ASSISTANT DIRECTOR (PLANNING AND DEVELOPMENT) OF THE URBAN SERVICES DEPARTMENT, MISS ELLE SHUM, GAVE MEMBERS OF THE MONG KOK DISTRICT BOARD A HIGHLY DETAILED RUNDOWN ON THE VARIOUS CAPITAL AND MINOR WORKS PROJECTS PLANNED BY THE COUNCIL FOR THE DISTRICT OVER THE NEXT FIVE YEARS.

/IN ALL, .....

IN ALL, THERE ARE SIX CAPITAL WORKS AND 15 MINOR WORKS PROJECTS IN THE PLANNING PIPELINE FOR MONG KOK, OF WHICH OVER 70 PER CENT ARE RELATED TO RECREATION AND SPORT ACTIVITIES.

THE MULTI-MILLION DOLLAR PROGRAMME, INCLUDING FIVE PROJECTS UNDER CONSTRUCTION, COVERS A WIDE FIELD RANGING FROM MARKET COMPLEXES, COOKED-FOOD CENTRES, INDOOR GAMES HALLS AND PLAYGROUNDS TO SITTING-OUT AREAS AND REFUSE COLLECTION POINTS.

MISS SHUM SAID THE CURRENT CONSULTATION EXERCISE WAS VERY USEFUL IN THAT IT GAVE THE COUNCIL AND THE DEPARTMENT A BETTER IDEA OF THE NEEDS AND THE TYPES OF FACILITIES BEST-SUITED FOR A DISTRICT AS ITS DISTRICT BOARD MEMBERS SAW THEM.

SHE ALSO EXPLAINED TO MEMBERS THE CONSTRAINTS AND COMPLICATIONS INVOLVED IN THE PLANNING AND BUILDING OF THE VERY WIDE RANGE OF PROJECTS.

IN THE ENSUING DISCUSSIONS, MEMBERS TOOK A KEEN INTEREST IN THE SAI YEE STREET COMPLEX PROJECT AND URGED THAT IT BE UPGRADED AS SOON AS POSSIBLE.

MISS SHUM EXPLAINED THAT DUE TO SHORTAGE OF LAND RESOURCES IN THE DISTRICT AND IN ORDER TO MAKE THE FULLEST USE OF THE SITE FOR A COMPLEX, INCLUDING MARKET FACILITIES, THE PROJECT WOULD HAVE TO AWAIT THE OUTCOME OF CONSULTATIONS ON THE COUNCIL'S HAWKER REPORT.

UNDER THE COUNCIL'S WORKS PROGRAMME FOR EACH DISTRICT, PROJECTS ARE CLASSIFIED INTO FOUR CATEGORIES -- COMMITTED, APPROVED, ADVANCED PLANNING AND PRELIMINARY PLANNING. EXCEPT FOR THE COMMITTED PROJECTS, EACH ITEM IS TENTATIVELY GIVEN A HIGH, MEDIUM OR LOW PRIORITY.

FOLLOWING THE CONSULTATION EXERCISE, A FINALISED DRAFT CAPITAL WORKS PROGRAMME WILL BE PRESENTED TO THE URBAN COUNCIL FOR APPROVAL.

THEN, AFTER RATIFICATION BY THE COUNCIL, THE RESPECTIVE DISTRICT BOARDS WILL BE INFORMED OF THE FINALISED DEVELOPMENT PLANS FOR THEIR DISTRICTS.

THURSDAY, MAY 1, 1986

- 8 -

FOUR-DAY SUSPENSION OF FOOD SHOP LICENCE UPHELD  
\* \* \* \* \*

THE URBAN COUNCIL'S FOOD HYGIENE SELECT COMMITTEE TODAY UPHELD AN EARLIER DECISION TO SUSPEND FOR FOUR DAYS THE LICENCE OF A SIU MEI AND LO MEI SHOP IN SHANGHAI STREET, KOWLOON.

THIS WAS DECIDED AFTER THE COMMITTEE, CHAIRED BY MISS CECILIA YEUNG, HEARD AN APPEAL BY THE LICENSEE, MISS CHONG KIT-FONG.

THE COMMITTEE WAS TOLD MISS CHONG HAD WRITTEN TO CLAIM THAT THE SHOP LICENCE WAS TRANSFERRED TO HER LAST AUGUST AND THAT ALL PREVIOUS OFFENCES COMMITTED BY THE FORMER LICENSEE SHOULD NOT BE BROUGHT FORWARD TO COUNT AGAINST HER FOR THE PURPOSE OF IMPOSING A SUSPENSION ORDER.

THE LICENCE WAS FIRST SUSPENDED FOR TWO DAYS LAST JUNE FOLLOWING THREE OFFENCES RESULTING IN CONVICTIONS FOR CONTRAVENING THE PROVISIONS OF THE FOOD BUSINESS BY-LAWS WITHIN A PERIOD OF 12 MONTHS.

ANOTHER SUSPENSION ORDER FOR FOUR DAYS WAS MADE AFTER THREE FURTHER OFFENCES RESULTING IN CONVICTIONS WERE REGISTERED AGAINST THE SHOP WITHIN A PERIOD OF 12 MONTHS. BUT THE ORDER WAS HELD IN ABEYANCE ON RECEIPT OF THE NOTIFICATION OF TRANSFER OF THE LICENCE TO MISS CHONG LAST SEPTEMBER.

FOLLOWING INVESTIGATIONS BY STAFF OF THE URBAN SERVICES DEPARTMENT, RECOMMENDATIONS WERE MADE TO ENFORCE THE EARLIER FOUR-DAY SUSPENSION ORDER ON THE BASIS OF THE TRANSFER BEING AN INGENUINE ONE.

FOR EXAMPLE, THE COMMITTEE WAS TOLD, NO SIGN OF ALTERATION HAD BEEN ERECTED AND THE BUSINESS HAD BEEN CARRIED ON AS USUAL ON THE PREMISES UNDER THE SAME SHOP SIGN DURING AND AFTER THE TRANSFER.

THE FOUR-DAY SUSPENSION WILL GO INTO FORCE AT A DATE TO BE FIXED.

- - - - 0 - - - -

/9 .....

- 9 -

CHANCE TO LOOK AT WORKING WORLD

\* \* \* \*

THE YOUTH EMPLOYMENT ADVISORY SERVICE OF THE LABOUR DEPARTMENT IS ORGANISING A MONTH-LONG WORK ORIENTATION PROGRAMME FOR STUDENTS TO SEE THE REAL WORLD OF WORK.

MORE THAN 700 STUDENTS FROM 28 SECONDARY SCHOOLS IN YUEN LONG, TSUEN WAN, KWAI CHUNG, TSING YI AND SAI KUNG WILL TAKE PART IN THE PROGRAMME WHICH STARTS ON TUESDAY (MAY 6).

THE PROGRAMME INCLUDES VISITS TO VARIOUS ESTABLISHMENTS IN THE PUBLIC AND PRIVATE SECTORS SUCH AS VOCATIONAL TRAINING CENTRES, TELEVISION AND RADIO STATIONS, HOTELS AND TOYS AND GARMENT FACTORIES.

A DEPARTMENT SPOKESMAN SAID THE PROGRAMME WHICH WAS LAUNCHED LAST YEAR WAS AIMED AT PROVIDING STUDENTS WITH FIRST-HAND INFORMATION ON VARIOUS OCCUPATIONS AND TO SEE ACTUAL WORKING ENVIRONMENT.

+THE VISITS WILL BE CONDUCTED BY SPECIALLY ASSIGNED PERSONNEL OF EACH ESTABLISHMENT AND EXPLANATIONS WILL BE GIVEN TO STUDENTS WITH THE USE OF AUDIO-VISUAL AIDS WHERE NECESSARY,+ THE SPOKESMAN SAID.

+IT IS HOPED THAT BY ACTUALLY EXPERIENCING THE REAL ENVIRONMENT OF THE WORKPLACE AND OBSERVING PEOPLE AT WORK, STUDENTS WOULD BE ABLE TO DEVELOP A MORE REALISTIC UNDERSTANDING OF THE WORKING WORLD THUS FACILITATING THEIR EVENTUAL TRANSITION FROM SCHOOL TO THE SOCIETY,+ HE ADDED.

- - - - 0 - - - -

VISION OF RELIEF TO LION ROCK CONGESTION

\* \* \* \*

THE LONGEST ROAD TUNNEL IN HONG KONG - A FOUR-KILOMETRE TUBE UNDER TATE'S CAIRN COSTING \$1 200 MILLION - IS LIKELY TO RESULT FROM A FEASIBILITY STUDY COMMISSIONED BY THE GOVERNMENT TODAY (THURSDAY).

THE HIGHWAYS OFFICE OF THE ENGINEERING DEVELOPMENT DEPARTMENT HAS APPOINTED CONSULTANTS MOTT, HAY AND ANDERSON HONG KONG LTD. TO CARRY OUT THE SEVEN-MONTH STUDY INTO THE PROJECT WHICH WOULD LINK SHA TIN AND THE NORTHEAST NEW TERRITORIES WITH EAST KOWLOON.

IT WOULD ALSO RELIEVE PRESENT CONGESTION AT THE LION ROCK TUNNEL.

/IF THE .....

THURSDAY, MAY 1, 1986

- 10 -

IF THE GO-AHEAD IS GIVEN THE TUNNEL WOULD TAKE THREE TO FOUR YEARS TO BUILD. IT IS EXPECTED THAT ITS SOUTHERN PORTAL WOULD BE IN DIAMOND HILL WITH CONNECTING ROADS TO LUNG CHEUNG ROAD AND PRINCE EDWARD ROAD EAST.

AT THE SHA TIN END THE TUNNEL WOULD BE CONNECTED TO THE TRUNK ROAD AND LOCAL ROAD SYSTEM AT A POINT TO BE DETERMINED.

IT IS TO DECIDE SUCH POINTS AS CONNECTION TO EXISTING ROAD SYSTEMS AND THE BEST ROUTE FOR THE TUNNEL THAT THE STUDY HAS BEEN COMMISSIONED.

THE STUDY WILL ALSO DECIDE WHAT ELECTRICAL, MECHANICAL AND TRAFFIC CONTROL SYSTEMS WOULD BE NECESSARY FOR THE TUNNEL'S SAFE OPERATION.

- - - - 0 - - - -

#### SUMMER WORK FOR TECHNICAL INSTITUTE STUDENTS

\* \* \* \* \*

EMPLOYERS IN THE INDUSTRY, COMMERCE AND SERVICE SECTORS ARE URGED TO OFFER ATTACHMENT PLACES FOR SOME 1 400 TECHNICAL INSTITUTE STUDENTS THIS SUMMER.

FULL-TIME STUDENTS FROM THE FIVE TECHNICAL INSTITUTES WILL BE SENT TO WORK IN ESTABLISHMENTS RELATED TO CLOTHING, TEXTILES, COMMERCIAL, COMPUTING, DESIGN, ELECTRICAL ENGINEERING, MECHANICAL ENGINEERING AND PRINTING INDUSTRIES.

+PRACTICAL EXPERIENCE IS A VITAL PART OF THE CURRICULUM OF TECHNICAL EDUCATION AND EXPOSURE TO INDUSTRIAL OR REAL-LIFE WORKING ENVIRONMENT WILL HELP STUDENTS TO APPLY WHAT THEY HAVE LEARNED,+ A SPOKESMAN FOR THE VOCATIONAL TRAINING COUNCIL SAID.

THE SUMMER ATTACHMENT SCHEME WOULD BENEFIT BOTH STUDENTS AND EMPLOYERS IN THE LONG RUN, HE ADDED.

EMPLOYERS ABLE TO OFFER PRACTICAL TRAINING OPPORTUNITIES TO STUDENTS BETWEEN MID-JULY AND MID-SEPTEMBER SHOULD CONTACT THE TECHNICAL INSTITUTES DIRECT DURING OFFICE HOURS AT THE FOLLOWING NUMBERS: MORRISON HILL (5-745321), KWAI CHUNG (0-246221), KWUN TONG (3-7274331), HAKING WONG (3-615161) AND LEE WAI LEE (3-383611).

- - - - 0 - - - -

CIVIC EDUCATION CARTOONS ON DISPLAY

\* \* \* \*

WINNING ENTRIES IN THE CIVIC EDUCATION CARTOON DRAWING COMPETITION FOR MONG KOK DISTRICT ARE BEING PUT ON A MONTH-LONG DISPLAY AT THE SYCAMORE OPEN-AIR ART GALLERY STARTING TODAY (THURSDAY).

LOCAL RESIDENTS AND MEMBERS OF THE PUBLIC ARE INVITED TO SEE THE EXHIBITION IN THE GALLERY LOCATED AT AN ACCESS LANE BOUNDED BY BOUNDARY STREET AND SYCAMORE STREET.

THE COMPETITION WAS ORGANISED BY THE TAI KOK TSUI AREA COMMITTEE AND THE TAI KOK TSUI YOUTH CENTRE OF THE HONG KONG FEDERATION OF YOUTH GROUPS TO ENHANCE RESIDENTS' AWARENESS OF THEIR CIVIC RIGHTS AND DUTIES.

COMPETITORS WERE REQUIRED TO DEPICT THE MAIN THEMES OF IDENTIFYING THE DISTRICT'S CHARACTERISTICS AND PROMOTING RESIDENTS' CONCERN FOR PUBLIC PROPERTY AND HELPFULNESS.

+THE CARTOONS HAD BEEN VERY SUCCESSFUL IN ILLUSTRATING THE THEMES AND CONVEYING THE IMPORTANCE OF CIVIC EDUCATION IN VIVID AND SIMPLISTIC DRAWINGS,+ A SPOKESMAN FOR THE AREA COMMITTEE SAID.

+THE COMMITTEE HOPED THAT THROUGH THE DISPLAY OF DRAWINGS AT THE GALLERY THE CIVIC AWARENESS MESSAGE COULD BE MORE WIDELY SPREAD TO PEOPLE IN THE DISTRICT,+ HE SAID.

THIRTY WINNING CARTOONS WERE SELECTED FOR DISPLAY. THEY HAVE ALSO BEEN PUBLISHED IN A BOOKLET, COPIES OF WHICH ARE BEING DISTRIBUTED TO SCHOOLS AND COMMUNITY ORGANISATIONS IN THE DISTRICT.

- - - - 0 - - - -

ROUTE FOR CHARITY WALK

\* \* \*

MOTORISTS IN SAU MAU PING SHOULD TAKE SPECIAL CARE DURING A CHARITY WALK THERE FROM 10.30 AM TO 1 PM ON SUNDAY (MAY 4), THE TRANSPORT DEPARTMENT HAS ADVISED.

THE WALK WILL TAKE IN HIP WO STREET, SAU MAU PING ROAD AND HIU KWONG STREET.

THE CHARITY WALK IS ORGANISED BY THE UNITED CHRISTIAN HOSPITAL EXTENSION FUND RAISING ORGANISING COMMITTEE.

- - - - 0 - - - -

THURSDAY, MAY 1, 1986

- 12 -

DETAILS OF TV PROGRAMME  
\* \* \*

THE SOUTHERN DISTRICT OFFICE AND HONG KONG TELEVISION BROADCASTS LIMITED WILL SOON BE JOINTLY PRESENTING A TWO-HOUR PROGRAMME, +GOOD MORNING SOUTHERN DISTRICT+, PORTRAYING THE DIFFERENT ASPECTS AND CHARACTERISTICS OF THE DISTRICT.

A PRESS CONFERENCE TO ANNOUNCE DETAILS OF THE PROGRAMME WILL BE HELD AT 3 PM TOMORROW (FRIDAY) IN THE LOTUS ROOM OF THE ROYAL GARDEN HOTEL, TSIM SHA TSUI EAST.

SOUTHERN DISTRICT OFFICER, MR SIMON LORD, DISTRICT BOARD CHAIRMAN, MR JASPER LAM, DEPUTY PRODUCTION MANAGER OF TVB, MISS SOPHIA CHAN, AND EXECUTIVE PRODUCER OF THE +GOOD MORNING HONG KONG+ PROGRAMME, MR JOHNNY WONG, WILL ATTEND THE CONFERENCE.

- - - - -

NOTE TO EDITORS:

YOU ARE INVITED TO ATTEND THE PRESS CONFERENCE.

- - - - - 0 - - - - -