



# DAILY INFORMATION BULLETIN

ISSUED BY GOVERNMENT INFORMATION SERVICES  
BEACONSFIELD HOUSE, HONG KONG. TEL.: 842 8777

MONDAY, JANUARY 27, 1992

<u>CONTENTS</u>	<u>PAGE NO.</u>
CONSUMER PRICE INDEXES FOR DECEMBER 1991 .....	1
PROVISIONAL TRADE FIGURES FOR DECEMBER 1991 ANNOUNCED .....	6
GOVT TO SPEND \$102.4 BILLION ON CAPITAL WORKS PROJECTS .....	8
GOVT TO ESTABLISH INDUSTRIAL TECHNOLOGY CENTRE .....	9
STUDY ON SCIENCE PARK TO BE COMMISSIONED .....	10
NEW WHOLESALE FOOD MARKET OPENS IN WESTERN .....	11
CHANCE FOR YOUNG MUSICIANS TO ATTEND MUSIC CAMP IN USA .....	13
SPRING SCROLLS PUBLICISE DB MEET-THE-PUBLIC SCHEME .....	14
WATER STORAGE FIGURE .....	14
HONG KONG GOVERNMENT EXCHANGE FUND MONEY MARKET OPERATIONS .....	15

MONDAY, JANUARY 27, 1992

- 1 -

CONSUMER PRICE INDEXES FOR DECEMBER 1991

\* \* \* \* \*

THE RATE OF INCREASE IN THE CONSUMER PRICE INDEX (A) FOR DECEMBER LAST YEAR WAS THE LOWEST RECORDED IN THE ENTIRE YEAR, AND WAS 3.6 PERCENTAGE POINTS DOWN FROM THE PEAK FIGURE OF 13.9% IN APRIL.

THE RATE OF INCREASE IN THE CONSUMER PRICE INDEX (B) FOR DECEMBER 1991 WAS ALSO THE LOWEST RECORDED IN 1991, AND WAS 2.6 PERCENTAGE POINTS DOWN FROM THE PEAK FIGURE OF 13.0% IN APRIL.

ACCORDING TO THE FIGURES RELEASED BY THE CENSUS AND STATISTICS DEPARTMENT TODAY (MONDAY), THE CPI(A) FOR DECEMBER LAST YEAR WAS 10.3% HIGHER THAN THAT FOR DECEMBER 1990, AND THE CPI(B) WAS 10.4% HIGHER.

THE FINANCIAL SECRETARY, MR HAMISH MACLEOD, COMMENTED THAT THE CONTINUED DOWNWARD TREND IN INFLATION FROM 13.9% TO 10.3% WAS VERY WELCOMED.

FOR 1991 AS A WHOLE, THE AVERAGE CPI(A) AND AVERAGE CPI(B) WERE 12.0% AND 11.6% RESPECTIVELY HIGHER THAN THOSE IN 1990.

FOR DECEMBER 1991, THE 1984/85-BASED HANG SENG CPI WAS 10.1% HIGHER THAN THAT FOR DECEMBER 1990. FOR 1991 AS A WHOLE, THE AVERAGE HANG SENG CPI ROSE BY 11.1% COMPARED WITH THAT IN 1990.

THE CONTINUED SLOWDOWN IN THE YEAR-ON-YEAR RATES OF INCREASE IN CPI(A) AND CPI(B) FOR DECEMBER WAS MAINLY DUE TO A FURTHER MODERATION OF THE INCREASE IN FOOD PRICES.

WHILE THE PRICES OF FRESH VEGETABLES DECREASED FURTHER IN DECEMBER 1991 OVER THE SAME MONTH IN 1990, CHARGES FOR MEALS AT RESTAURANTS AND THE PRICES OF LIVE POULTRY AND FRESH FRUIT ALSO SHOWED MORE MODERATE INCREASES OVER THE SAME PERIOD.

MOREOVER, THE PRICES OF OIL PRODUCTS AND THE CHARGES FOR SOME TRANSPORT SERVICES, WHICH WERE RAISED NEAR THE END OF 1990, REMAINED STABLE IN DECEMBER 1991.

COMPARED WITH A YEAR EARLIER, THE FUEL AND LIGHT COMPONENT IN THE CPI(A) RECORDED A DECREASE OF 2.3% FOR DECEMBER 1991.

AS REGARDS THE OTHER MAJOR COMPONENTS IN CPI(A), INCREASES BELOW THE OVERALL AVERAGE WERE RECORDED IN THE DURABLE GOODS COMPONENT (3.3%); FOLLOWED BY CLOTHING AND FOOTWEAR (7.1%); MISCELLANEOUS GOODS (7.6%); FOOD (EXCLUDING MEALS AT RESTAURANTS) (8.9%); AND HOUSING (10.0%).

ON THE OTHER HAND, INCREASES FASTER THAN THE OVERALL AVERAGE WERE RECORDED IN TRANSPORT AND VEHICLES (10.4%); MEALS AT RESTAURANTS (11.5%); SERVICES (13.4%); AND ALCOHOLIC DRINKS AND TOBACCO FOR HOME CONSUMPTION (37.4%).

THE 1989/90-BASED CPI(A) AND CPI(B) FOR DECEMBER 1991 INCREASED BY 0.3% AND 0.6% RESPECTIVELY WHEN COMPARED WITH NOVEMBER 1991. THESE RATES OF INCREASE WERE SLIGHTLY LOWER THAN THOSE RECORDED IN NOVEMBER 1991, BEING 0.4% FOR CPI(A) AND 0.7% FOR CPI(B) OVER OCTOBER 1991.

THE INCREASES IN THE INDEXES FOR DECEMBER 1991 WERE MAINLY DUE TO HIGHER RENT FOR PRIVATE HOUSING, HIGHER CHARGES FOR MEALS AT RESTAURANTS, AND HIGHER PRICES OF WINTER OUTERCLOTHING.

IN ADDITION, CHARGES FOR ELECTRICITY AND TOWNGAS IN THE FUEL AND LIGHT COMPONENT ALSO REGISTERED AN INCREASE.

THE INDEX FOR THE FOOD COMPONENT REMAINED STABLE IN BOTH CPI(A) AND CPI(B). WITHIN THIS COMPONENT, PRICES OF FRESH VEGETABLES WERE LOWER IN DECEMBER THAN IN NOVEMBER 1991, WHILE CHARGES FOR MEALS AT RESTAURANTS AND THE RETAIL PRICES OF SHRIMPS AND CRABS RECORDED MODERATE INCREASES.

WITHIN THE HOUSING COMPONENT, PRIVATE HOUSING RENTALS INCREASED FURTHER, BUT PUBLIC HOUSING RENTALS REMAINED STABLE.

FOR THE SERVICES COMPONENT, HIGHER CHARGES FOR MEDICAL SERVICES AND HAIRDRESSING AND HIGHER ADMISSION CHARGES FOR SOME ENTERTAINMENTS WERE RECORDED.

THE 1989/90-BASED HANG SENG CPI FOR DECEMBER 1991 DECREASED BY 0.1% WHEN COMPARED WITH NOVEMBER 1991.

THE CENSUS AND STATISTICS DEPARTMENT WILL CONTINUE TO RELEASE THE 1984/85-BASED CPI(A) AND CPI(B) IN PARALLEL WITH THE NEW SERIES OF 1989/90-BASED CPI(A) AND CPI(B) UNTIL MARCH THIS YEAR, AFTER WHICH THE FORMER SERIES WILL BE DISCONTINUED.

MORE DETAILS ARE GIVEN IN THE "CONSUMER PRICE INDEX REPORT" FOR DECEMBER 1991, WHICH IS AVAILABLE AT \$7 PER COPY FROM THE GOVERNMENT PUBLICATIONS SALES CENTRE, GROUND FLOOR, GENERAL POST OFFICE BUILDING, CONNAUGHT PLACE, CENTRAL; OR FROM THE CENSUS AND STATISTICS DEPARTMENT, 19TH FLOOR, WANCHAI TOWER 1, 12 HARBOUR ROAD, WAN CHAI, HONG KONG; OR FROM THE INFORMATION SERVICES DEPARTMENT, FRENCH MISSION BUILDING, 1 BATTERY PATH, HONG KONG FOR LOCAL AND OVERSEAS MAILINGS.

FOR ENQUIRIES ABOUT THE INDEXES, PLEASE TELEPHONE THE CONSUMER PRICE INDEX SECTION OF THE CENSUS AND STATISTICS DEPARTMENT ON TEL. 805 6403.

DETAILS REGARDING THE HANG SENG CPI ARE CONTAINED IN THE HANG SENG CPI REPORT ISSUED BY THE ECONOMIC RESEARCH DEPARTMENT OF HANG SENG BANK LTD.

TABLE 1 CONSUMER PRICE INDEXES (A) AND (B) (OCT. 84 - SEP. 85 = 100)  
FOR DECEMBER 1991 COMPARED WITH DECEMBER 1990

SECTION	(OCTOBER 1984 TO SEPTEMBER 1985 = 100) CPI(A)		CPI(B)	
	INDEX FOR DEC. 91	% CHANGE OVER DEC. 90	INDEX FOR DEC. 91	% CHANGE OVER DEC. 90
FOOD	163.7	+10.2	166.5	+10.5
MEALS BOUGHT AWAY FROM HOME	186.5	+11.5	187.1	+11.5
FOOD, EXCLUDING MEALS BOUGHT AWAY FROM HOME	144.2	+8.9	146.2	+9.3
HOUSING	154.8	+10.0	149.5	+11.5
FUEL AND LIGHT	114.2	-2.3	113.5	-1.9
ALCOHOLIC DRINKS AND TOBACCO (FOR HOME CONSUMPTION)	223.8	+37.4	222.0	+35.3
CLOTHING AND FOOTWEAR	164.9	+7.1	169.5	+7.3
DURABLE GOODS	132.8	+3.3	131.7	+3.4
MISCELLANEOUS GOODS	156.8	+7.6	155.8	+7.6
TRANSPORT AND VEHICLES	177.5	+10.4	176.1	+9.6
SERVICES	193.8	+13.4	191.8	+13.1
ALL ITEMS	163.9	+10.3	163.6	+10.4

THE 1984/85-BASED CONSUMER PRICE INDEXES ARE BASED ON THE EXPENDITURE PATTERNS DERIVED FROM THE 1984/85 HOUSEHOLD EXPENDITURE SURVEY.

THE CPI(A) IS BASED ON THE EXPENDITURE PATTERN OF ABOUT 50% OF URBAN HOUSEHOLDS IN HONG KONG, WHICH HAD AN AVERAGE MONTHLY EXPENDITURE OF \$2,000-\$6,499 A MONTH IN 1984/85.

THE CPI(B) IS BASED ON THE EXPENDITURE PATTERN OF THE NEXT 30% OF URBAN HOUSEHOLDS, WHICH HAD AN AVERAGE MONTHLY EXPENDITURE OF \$6,500-\$9,999 IN THE SAME PERIOD.

(THE 1984/85-BASED HANG SENG CPI IS BASED ON THE EXPENDITURE PATTERN OF ABOUT 10% OF URBAN HOUSEHOLDS WHICH HAD AN AVERAGE MONTHLY EXPENDITURE OF \$10,000-\$24,999 IN 1984/85.)

TABLE 2 CONSUMER PRICE INDEXES (A) AND (B) (OCT. 89 - SEP. 90 = 100)  
FOR DECEMBER 1991 COMPARED WITH NOVEMBER 1991

SECTION	(OCTOBER 1989 TO SEPTEMBER 1990 = 100)			
	CPI(A)		CPI(B)	
	INDEX FOR DEC. 91	% CHANGE OVER NOV. 91	INDEX FOR DEC. 91	% CHANGE OVER NOV. 91
FOOD	116.5	-0.0*	117.7	+0.2
MEALS BOUGHT AWAY FROM HOME	121.1	+0.3	121.2	+0.4
FOOD, EXCLUDING MEALS BOUGHT AWAY FROM HOME	112.0	-0.4	113.0	-0.1
HOUSING	122.0	+0.8	122.5	+1.2
FUEL AND LIGHT	111.1	+1.2	110.7	+1.3
ALCOHOLIC DRINKS AND TOBACCO (FOR HOME CONSUMPTION)	145.6	-0.2	139.4	-0.2
CLOTHING AND FOOTWEAR	114.9	+1.2	116.1	+1.2
DURABLE GOODS	105.4	+0.1	105.2	-0.1
MISCELLANEOUS GOODS	113.0	+0.4	111.4	+0.5
TRANSPORT AND VEHICLES	119.5	+0.1	118.9	+0.1
SERVICES	122.1	+0.5	120.5	+0.8
ALL ITEMS	118.1	+0.3	118.3	+0.6

\* LESS THAN 0.05%

THE 1989/90-BASED CONSUMER PRICE INDEXES ARE BASED ON THE EXPENDITURE PATTERNS DERIVED FROM THE 1989/90 HOUSEHOLD EXPENDITURE SURVEY.

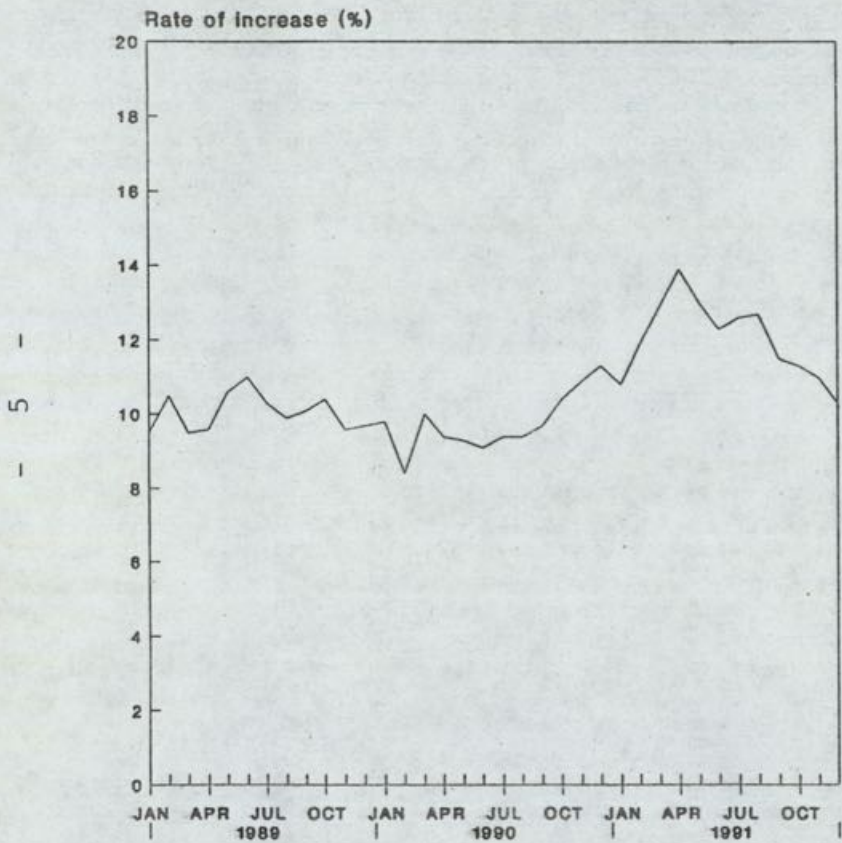
THE CPI(A) IS BASED ON THE EXPENDITURE PATTERN OF ABOUT 50% OF URBAN HOUSEHOLDS IN HONG KONG, WHICH HAD AN AVERAGE MONTHLY EXPENDITURE OF \$2,500-\$9,999 A MONTH IN 1989/90.

THE CPI(B) IS BASED ON THE EXPENDITURE PATTERN OF THE NEXT 30% OF URBAN HOUSEHOLDS, WHICH HAD AN AVERAGE MONTHLY EXPENDITURE OF \$10,000-\$17,499 IN THE SAME PERIOD.

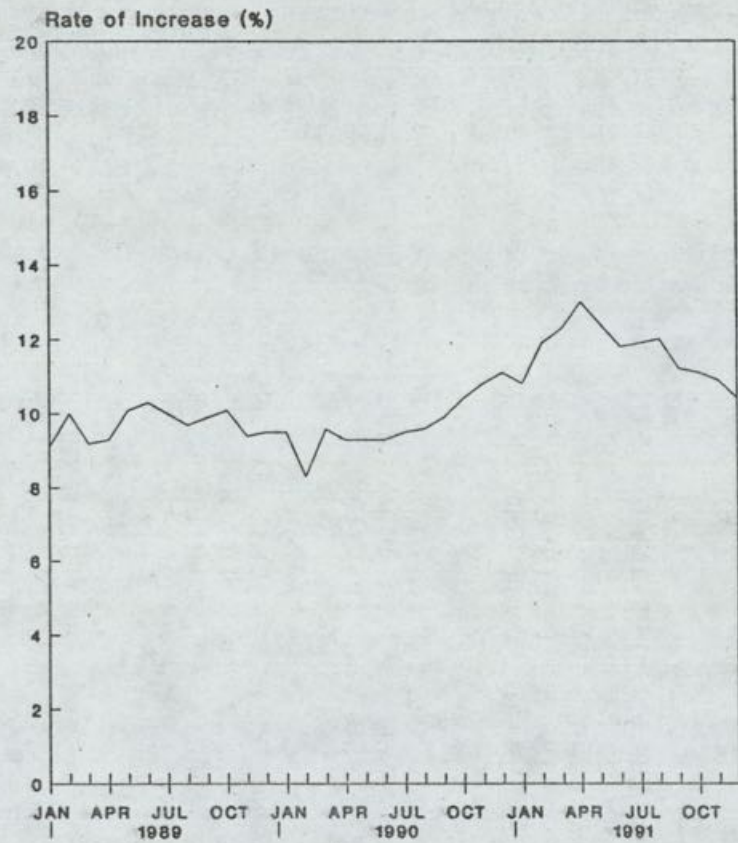
(THE 1989/90-BASED HANG SENG CPI IS BASED ON THE EXPENDITURE PATTERN OF ABOUT 10% OF URBAN HOUSEHOLDS WHICH HAD AN AVERAGE MONTHLY EXPENDITURE OF \$17,500-\$37,499 IN 1989/90.)

-----

Year-on-year Rates of Increase  
in the 1984/85-based CPI(A)



Year-on-year Rates of Increase  
in the 1984/85-based CPI(B)



1  
-  
-  
0  
-  
-  
-

MONDAY, JANUARY 27, 1992

- 6 -

PROVISIONAL TRADE FIGURES FOR DECEMBER 1991 ANNOUNCED

\* \* \* \* \*

IN DECEMBER LAST YEAR, RE-EXPORTS CONTINUED TO SURGE, WHILE DOMESTIC EXPORTS ROSE SIGNIFICANTLY. IMPORTS ALSO REGISTERED A MARKED INCREASE.

THESE ARE SHOWN IN THE PROVISIONAL TRADE FIGURES RELEASED TODAY (MONDAY) BY THE CENSUS AND STATISTICS DEPARTMENT.

THE VALUE OF RE-EXPORTS IN DECEMBER 1991 ROSE BY \$15,726 MILLION OR 42.8% OVER A YEAR EARLIER TO \$52,487 MILLION. THE VALUE OF DOMESTIC EXPORTS ALSO ROSE, BY \$2,087 MILLION OR 10.3% TO \$22,299 MILLION.

TAKING RE-EXPORTS AND DOMESTIC EXPORTS TOGETHER, THE VALUE OF TOTAL EXPORTS GREW BY \$17,813 MILLION OR 31.3% OVER A YEAR EARLIER TO \$74,786 MILLION IN DECEMBER 1991. OVER THE SAME PERIOD, THE VALUE OF IMPORTS ROSE BY \$17,616 MILLION OR 29.7% TO \$76,974 MILLION.

AS THE VALUE OF TOTAL EXPORTS WAS SMALLER THAN THAT OF TOTAL IMPORTS, A VISIBLE TRADE DEFICIT OF \$2,188 MILLION, EQUIVALENT TO 2.8% OF THE VALUE OF IMPORTS, WAS RECORDED IN DECEMBER 1991. THE DEFICIT RECORDED IN DECEMBER 1990 WAS \$2,385 MILLION, EQUIVALENT TO 4.0% OF THE VALUE OF IMPORTS.

FOR 1991 AS A WHOLE, THE VALUE OF TOTAL EXPORTS AMOUNTED TO \$765,886 MILLION, MADE UP OF RE-EXPORTS OF \$534,841 MILLION AND DOMESTIC EXPORTS OF \$231,045 MILLION.

COMPARED WITH 1990, TOTAL EXPORTS GREW BY \$126,012 MILLION OR 19.7% IN VALUE TERMS, WITH RE-EXPORTS RISING BY \$120,842 MILLION OR 29.2% AND DOMESTIC EXPORTS BY \$5,170 MILLION OR 2.3%. OVER THE SAME PERIOD, THE VALUE OF IMPORTS ROSE BY \$136,452 MILLION OR 21.2% TO \$778,982 MILLION.

FOR 1991 AS A WHOLE, THERE WAS A TRADE DEFICIT OF \$13,096 MILLION, EQUIVALENT TO 1.7% OF THE VALUE OF IMPORTS. THE DEFICIT RECORDED IN 1990 WAS \$2,656 MILLION, EQUIVALENT TO 0.4% OF THE VALUE OF IMPORTS.

A GOVERNMENT SPOKESMAN COMMENTED THAT THE LARGE INCREASE IN EXPORTS IN DECEMBER 1991 WAS DUE IN PART TO A RUSH FOR SHIPMENT TOWARDS THE YEAR END TO MEET THE SEASONAL DEMAND. ALSO, THE UNCERTAINTIES BROUGHT ABOUT BY THE POSSIBLE U.S. SPECIAL 301 ACTION ON CHINA OVER THE LAST MONTH OR SO MIGHT HAVE LED TO THE ADVANCEMENT OF SOME OF THE RE-EXPORT SHIPMENTS TO THE U.S. MARKET.

COMMENTING ON THE TRADE PERFORMANCE FOR THE WHOLE YEAR, THE SPOKESMAN POINTED OUT THAT THE ROBUST RE-EXPORT GROWTH WAS MAINLY ATTRIBUTABLE TO THE CONTINUED RAPID INCREASE IN RE-EXPORTS INVOLVING CHINA IN BOTH DIRECTIONS.

/WHILE DOMESTIC .....

WHILE DOMESTIC EXPORTS SHOWED A SIGNIFICANT INCREASE IN DECEMBER, THEIR PERFORMANCE FOR THE YEAR AS A WHOLE WAS STILL WEAK. THE RELATIVE SHIFT FROM DOMESTIC EXPORTS TO RE-EXPORTS THUS CONTINUED, AND THIS WAS RELATED TO A CONSIDERABLE EXTENT TO OUTWARD PROCESSING ACTIVITIES ACROSS THE BORDER.

THE SPOKESMAN ALSO NOTED THAT IMPORTS RETAINED FOR DOMESTIC USES RESUMED POSITIVE GROWTH IN DECEMBER. FOR 1991 AS A WHOLE, RETAINED IMPORTS ROSE SIGNIFICANTLY, BY 10.8% IN VALUE TERMS.

THE FOLLOWING TABLE PRESENTS THE PROVISIONAL TRADE FIGURES FOR DECEMBER 1991:

MERCHANDISE:	DOMESTIC EXPORTS :	\$22,299 MILLION	
	RE-EXPORTS :	\$52,487 MILLION	
	TOTAL EXPORTS :	\$74,786 MILLION	
	IMPORTS :	\$76,974 MILLION	
	TRADE BALANCE :	\$2,188 MILLION	[IN DEFICIT]

## COMPARATIVE FIGURES

LATEST 3 MONTHS	OCT 91 TO	OCT 90 TO	INCREASE	
	DEC 91	DEC 90	HK\$ MN.	%
	HK\$ MN.	HK\$ MN.		
DOMESTIC EXPORTS	64,052	64,275	-223	-0.3
RE-EXPORTS	155,885	121,305	34,580	28.5
TOTAL EXPORTS	219,937	185,580	34,357	18.5
IMPORTS	216,971	186,662	30,309	16.2
TRADE BALANCE	2,966	-1,082	4,048	

SAME MONTH LAST YEAR	DECEMBER	DECEMBER	INCREASE	
	1991	1990	HK\$ MN.	%
	HK\$ MN.	HK\$ MN.		
DOMESTIC EXPORTS	22,299	20,212	2,087	10.3
(% OF TOTAL EXPORTS)	(29.8%)	(35.5%)		
RE-EXPORTS	52,487	36,761	15,726	42.8
TOTAL EXPORTS	74,786	56,973	17,813	31.3
IMPORTS	76,974	59,358	17,616	29.7
TRADE BALANCE	-2,188	-2,385	197	

LAST MONTH	DECEMBER	NOVEMBER	INCREASE	
	1991	1991	HK\$ MN.	%
	HK\$ MN.	HK\$ MN.		
DOMESTIC EXPORTS	22,299	20,456	1,843	9.0
(% OF TOTAL EXPORTS)	(29.8%)	(28.1%)		
RE-EXPORTS	52,487	52,300	187	0.4
TOTAL EXPORTS	74,786	72,756	2,030	2.8
IMPORTS	76,974	70,715	6,259	8.9
TRADE BALANCE	-2,188	2,041	-4,229	

LAST 12 MONTHS	JAN-DEC	JAN-DEC	INCREASE	
	1991	1990	HK\$ MN.	%
	HK\$ MN.	HK\$ MN.		
DOMESTIC EXPORTS	231,045	225,875	5,170	2.3
(% OF TOTAL EXPORTS)	(30.2%)	(35.3%)		
RE-EXPORTS	534,841	413,999	120,842	29.2
TOTAL EXPORTS	765,886	639,874	126,012	19.7
IMPORTS	778,982	642,530	136,452	21.2
TRADE BALANCE	-13,096	-2,656	-10,440	

----- 0 -----

### GOVT TO SPEND \$102.4 BILLION ON CAPITAL WORKS PROJECTS

\* \* \* \* \*

THE GOVERNMENT HAD ALLOCATED \$102.4 BILLION FOR CAPITAL WORKS PROJECTS SPENDING BETWEEN NOW AND 1995, THE SECRETARY FOR WORKS, MR JAMES BLAKE, SAID TODAY (MONDAY).

SPEAKING AT THE LLOYD GEORGE MANAGEMENT INVESTMENT CONFERENCE LUNCHEON AT THE MANDARIN ORIENTAL HOTEL, MR BLAKE SAID SPENDING BY GOVERNMENT ON CAPITAL WORKS PROJECTS FOR THE YEAR 1995 TO 2000 WAS EXPECTED TO CONTINUE AT AN ANNUAL RATE EQUIVALENT TO THAT FOR THE PERIOD UP TO 1995.

"IN ADDITION TO THIS, SUBSTANTIAL EXPENDITURE WILL BE INCURRED BY THE PRIVATE SECTOR, AND BY THOSE AGENCIES WHICH SECURE THEIR OWN FUNDS FROM INTERNATIONAL CAPITAL MARKETS WITH THE HONG KONG GOVERNMENT IN SUPPORT. PLANNED EXPENDITURE WITHIN THIS DECADE IS \$73 BILLION," HE SAID.

APART FROM THE \$43.6 BILLION NEW AIRPORT AT CHEK LAP KOK AND RELATED CORE PROJECTS, MR BLAKE SAID ABOUT \$40 BILLION WOULD BE SPENT ON NEW TOWN INFRASTRUCTURE CONSTRUCTION AND SERVICING, PRIMARILY FOR TSEUNG KWAN O AND TIN SHUI WAI WHICH WILL HAVE A TOTAL POPULATION OF ABOUT 600,000.

"A MAJOR PROGRAMME OF UPGRADING AND NEW DRAINAGE SYSTEMS FOR SEWAGE AND STORMWATER WILL INVOLVE EXPENDITURE OF SOME \$20 BILLION OVER THE NEXT 10 YEARS," HE SAID.

IN ADDITION, MR BLAKE SAID \$2.8 BILLION WOULD BE SPENT ON EXTENDING OUR RECEIVING, TREATMENT AND DISTRIBUTION SYSTEM FOR WATER FROM CHINA'S EAST RIVER TO COPE WITH FURTHER ANTICIPATED INCREASE IN SUPPLY.

HE SAID THREE STRATEGIC LANDFILL OPERATIONS WOULD BE FRANCHISED FOR BUILDING AND OPERATION AT AN ESTIMATED COST OF SOME \$12.8 BILLION, TO COPE WITH OUR PRESENT NEED TO DISPOSE OF SOME 23,000 TONNES PER DAY.

"FROM THE FOREGOING, YOU WILL HAVE NO DIFFICULTY IN BELIEVING THAT AN ENGINEER'S VIEW OF 1997 IS A VERY POSITIVE ONE.

"IT HAPPENS TO REPRESENT THE TARGET DATE FOR COMMISSIONING THE FIRST RUNWAY OF OUR NEW AIRPORT AT CHEK LAP KOK, WITH A VAST AMOUNT OF OTHER INFRASTRUCTURE WORK EITHER TO BE COMPLETED OR WELL IN HAND," HE ADDED.

- - - - 0 - - - -

GOVT TO ESTABLISH INDUSTRIAL TECHNOLOGY CENTRE

\* \* \* \* \*

THE GOVERNMENT WAS ESTABLISHING THE INDUSTRIAL TECHNOLOGY CENTRE TO ASSIST MANUFACTURERS IN TECHNOLOGY UPGRADING IN THE FACE OF EVER-INCREASING COMPETITION IN THE WORLD MARKETS, THE DIRECTOR-GENERAL OF INDUSTRY, MR T.H. BARMA, SAID TODAY (MONDAY).

SPEAKING AT THE TOPPING-OUT CEREMONY OF THE NEW PLANT OF SONOPRESS PAN ASIA LIMITED AT TAI PO INDUSTRIAL ESTATE, MR BARMA SAID THE CENTRE WOULD PROVIDE SUITABLE ACCOMMODATION AND SUPPORTING FACILITIES TO STIMULATE THE GROWTH OF INNOVATIVE NEW TECHNOLOGY-BASED FIRMS.

"IT WILL ALSO FACILITATE THE TRANSFER OF TECHNOLOGIES RELEVANT TO HONG KONG'S INDUSTRIAL GROWTH," HE SAID.

MR BARMA SAID THE GOVERNMENT ALSO SAW THE DEVELOPMENT OF A LOCAL RESEARCH AND DEVELOPMENT CAPABILITY CRUCIAL IF TECHNOLOGIES WERE GOING TO BE USEFULLY APPLIED IN HONG KONG'S OWN INDUSTRIAL ENVIRONMENT AND CIRCUMSTANCES.

"AN APPLIED RESEARCH AND DEVELOPMENT SCHEME WILL BE LAUNCHED SOON TO PROVIDE GOVERNMENT FUNDING AS A CATALYST FOR INCREASING THE VOLUME OF CORPORATE RESEARCH AND DEVELOPMENT UNDERTAKEN IN HONG KONG," HE SAID.

SONOPRESS IS A SUBSIDIARY OF BERTELSMANN, WHICH IS EUROPE'S LARGEST PUBLISHING AND MEDIA GROUP. PAN ASIA IS A HIGHLY ESTEEMED PRODUCER, MANUFACTURER AND DISTRIBUTOR OF COMPACT DISCS IN HONG KONG.

"THEY HAVE BROUGHT TOGETHER THEIR EXPERIENCE AND KNOWHOW IN THIS JOINT VENTURE TO SERVE THE HONG KONG AND ASIA PACIFIC MARKETS," MR BARMA SAID.

MR BARMA SAID THE SUBSTANTIAL INVESTMENT MADE BY SONOPRESS PAN ASIA IN THE GROWING COMPACT DISC BUSINESS IN HONG KONG SERVED TO SUPPORT THE GOVERNMENT'S VIEW ABOUT THE NEED FOR HONG KONG'S MANUFACTURING INDUSTRIES TO UPGRADE AND MOVE INTO HIGHER VALUE-ADDED PRODUCTS.

"IT ALSO TESTIFIES TO THE UNIQUE ADVANTAGES OF HONG KONG AS A HIGH-TECHNOLOGY MANUFACTURING CENTRE, AS WELL AS A DISTRIBUTION CENTRE," HE SAID.

- - - - 0 - - - -

STUDY ON SCIENCE PARK TO BE COMMISSIONED

\* \* \* \* \*

THE INDUSTRY DEPARTMENT WOULD SOON COMMISSION A CONSULTANCY STUDY TO EXAMINE THE CASE FOR DEVELOPING A SCIENCE PARK IN HONG KONG, THE DEPUTY DIRECTOR-GENERAL OF INDUSTRY, MR WILFRED WONG, SAID THIS (MONDAY) MORNING.

SPEAKING AT A CONFERENCE ON "INVESTMENT FOR THE FUTURE : SCIENCE PARK IN HONG KONG", MR WONG SAID THIS WAS THE FIRST OF A TWO-PART STUDY ON THE FEASIBILITY OF ESTABLISHING A SCIENCE PARK IN HONG KONG.

HE SAID THE FINANCE COMMITTEE OF THE LEGISLATIVE COUNCIL HAD APPROVED A SUM OF \$4.5 MILLION TO COVER PART ONE OF THE STUDY.

"THE STUDY IS EXPECTED TO COMMENCE SOON AND TO TAKE ABOUT SIX MONTHS TO COMPLETE," HE SAID.

MR WONG SAID PART ONE OF THE STUDY WOULD REQUIRE THE CONSULTANTS TO UNDERTAKE AN IN-DEPTH ANALYSIS OF THE PRESENT AND LIKELY FUTURE TECHNOLOGICAL INFRASTRUCTURE IN HONG KONG AND THE ASIAN REGION, AND THE EXPERIENCE OF DEVELOPING SCIENCE PARKS ELSEWHERE.

ALSO INCLUDED IN THE ANALYSIS WILL BE A COMPREHENSIVE MARKET SURVEY CONDUCTED BOTH LOCALLY AND OVERSEAS TO IDENTIFY THE DEMAND FOR A SCIENCE PARK IN HONG KONG AND THE SERVICES THAT FUTURE TENANTS MIGHT REQUIRE.

THERE WILL ALSO BE AN OVERALL ECONOMIC/TECHNOLOGICAL ASSESSMENT OF THE BENEFITS THAT MIGHT BE GAINED BY HONG KONG THROUGH THE DEVELOPMENT OF A SCIENCE PARK.

"AS A RESULT OF THIS WORK, THE CONSULTANTS WILL BE REQUIRED TO RECOMMEND CLEARLY WHETHER A SCIENCE PARK SHOULD OR SHOULD NOT BE DEVELOPED AND, IF SO, DEFINE WHAT THIS MIGHT MEAN IN THE CONTEXT OF HONG KONG," HE SAID.

MR WONG SAID DURING THE COURSE OF THE STUDY THE CONSULTANTS WOULD BE REQUIRED TO PRESENT THEIR FINDINGS TO VARIOUS INDUSTRIAL AND TRADE ORGANISATIONS AND TERTIARY ACADEMIC INSTITUTIONS IN ORDER TO SEEK AND INCORPORATE THEIR COMMENTS BEFORE PRESENTATION OF THEIR FINAL REPORT TO THE NEWLY-FORMED INDUSTRY AND TECHNOLOGY DEVELOPMENT COUNCIL (ITDC).

"IF THE ITDC CONSIDERS THAT THE NEED FOR A SCIENCE PARK HAS BEEN CLEARLY DEMONSTRATED BY THE CONSULTANTS' FINDINGS, FUNDS WILL BE SOUGHT FROM THE FINANCE COMMITTEE TO UNDERTAKE PART TWO OF THE STUDY.

"PART TWO OF THE STUDY WILL REQUIRE THE CONSULTANTS TO EXAMINE WHERE AND HOW THE SCIENCE PARK MIGHT BE ESTABLISHED THE FINANCIAL AND ECONOMIC IMPLICATIONS AND THE DEGREE TO WHICH BOTH THE TERTIARY ACADEMIC INSTITUTIONS AND THE PRIVATE SECTOR MIGHT BE INVOLVED," HE SAID.

EXPLAINING THE NEED FOR A SCIENCE PARK IN HONG KONG, MR WONG SAID NOTWITHSTANDING THE MANY AND VARIED SUPPORT FACILITIES AND SERVICES BEING PROVIDED TO THE INDUSTRY, IT WAS ESSENTIAL FOR HONG KONG TO HAVE THE RIGHT PHYSICAL INFRASTRUCTURE IN PLACE TO ENCOURAGE TECHNOLOGICAL INNOVATION.

"BASED ON EXPERIENCE ELSEWHERE, A SCIENCE PARK COULD BE A LOGICAL ADDITION TO THE TECHNOLOGICAL INFRASTRUCTURE OF HONG KONG," HE SAID.

MR WONG NOTED THAT THE NEW HONG KONG INDUSTRIAL TECHNOLOGY CENTRE UNDER DEVELOPMENT WAS ALREADY AN IMPORTANT STEP IN STIMULATING TECHNOLOGICAL INNOVATION, BUT THE SCOPE OF THE CENTRE WAS LIMITED.

HE SAID AS THE MAIN FUNCTION OF THE TECHNOLOGY CENTRE WAS TO PROVIDE ACCOMMODATION FOR SMALL "START-UP" COMPANIES, THE MAJORITY OF FUTURE TENANTS OF THE CENTRE WOULD OCCUPY UNITS OF ONLY 20 TO 100 SQUARE METRES IN AREA.

"WHEN TENANTS OF THE TECHNOLOGY CENTRE GROW AND THEIR BUSINESSES EXPAND, SOME WILL NO DOUBT WANT TO GO INTO A FACTORY ENVIRONMENT TO MANUFACTURE PRODUCTS THEY HAVE DEVELOPED.

"THOSE WHO ARE STILL RESEARCH OR SERVICE ORIENTED (SUCH AS COMPUTER SOFTWARE DESIGNERS AND LABORATORY TESTING FACILITIES) WILL ALSO WANT TO MOVE INTO LARGER ACCOMMODATION.

"A SCIENCE PARK, IF DEVELOPED, COULD PROVIDE THE EXTRA SPACE THEY NEED," HE SAID.

MOREOVER, MR WONG ADDED, A SCIENCE PARK COULD PROVIDE SUITABLE ACCOMMODATION FOR EXISTING MANUFACTURERS WHO WANTED TO SUBSTANTIALLY DEVELOP THEIR RESEARCH AND DEVELOPMENT CAPABILITY.

- - - - 0 - - - -

#### NEW WHOLESALE FOOD MARKET OPENS IN WESTERN

\* \* \* \* \*

THE WESTERN WHOLESALE FOOD MARKET OF THE AGRICULTURE AND FISHERIES DEPARTMENT, WHEN FULLY COMPLETED, WOULD BE THE FIRST OF ITS KIND IN HONG KONG INTEGRATING THE WHOLESALE MARKETING OF FIVE KINDS OF FRESH PRODUCE UNDER ONE ROOF AND HANDLING A DESIGNED THROUGHPUT OF 354,000 TONNES A YEAR.

THIS WAS SAID TODAY (MONDAY) BY THE SECRETARY FOR ECONOMIC SERVICES, MRS ANSON CHAN, AT THE OPENING CEREMONY OF PHASE I OF THE WESTERN WHOLESALE FOOD MARKET.

MRS CHAN SAID: "FOR MANY YEARS, WESTERN DISTRICT HAS BEEN A CENTRE FOR THE WHOLESALE MARKETING OF FRESH FOODSTUFFS ON HONG KONG ISLAND, NOTABLY THROUGH THE URBAN SERVICES DEPARTMENT'S IMPORTED VEGETABLE AND FRESHWATER FISH MARKETS IN KENNEDY TOWN; THE PRIVATE FRUIT AND POULTRY MARKETS IN THE SAME AREA AND THE PRIVATE EGG MARKET IN SAI YING PUN.

"IN RESPONSE TO THE NEEDS OF A RAPIDLY GROWN URBAN COMMUNITY, THE GOVERNMENT DECIDED SOME YEARS AGO TO ACCEPT RESPONSIBILITY FOR THE CONSTRUCTION AND MANAGEMENT OF MODERN AND INTEGRATED WHOLESALE MARKET COMPLEXES."

SHE POINTED OUT THAT AS A FIRST STEP, THE GOVERNMENT CONSTRUCTED TWO TEMPORARY MARKETS ON WESTERN RECLAMATION AS A QUICK AND INTERIM MEANS OF ADDRESSING THE PRESSING NEED TO REMOVE AND ACCOMMODATE THE OLD POULTRY AND FRUIT MARKETS AT KENNEDY TOWN.

"TODAY, WE SEE THE FORMAL OPENING OF PHASE I OF THE WESTERN WHOLESALE FOOD MARKET, PROVIDING PERMANENT TRADING FACILITIES FOR FRUIT, EGGS AND FRESHWATER FISH," SHE SAID.

THE NEW FACILITIES COMPRISE 254 MARKET STALLS AND 204 LORRY AND CONTAINER VEHICLE PARKING SPACES AND ARE DESIGNED TO HANDLE 195,000 TONNES OF FOODSTUFFS A YEAR.

THERE ARE ALSO THREE PURPOSE DESIGNED AND EQUIPPED PIERS TO MEET THE REQUIREMENTS OF THE DIFFERENT TRADES.

ANCILLARY FACILITIES SUCH AS BANKS, A REFRESHMENT KIOSK, A RESTAURANT, TRADE OFFICES AND GENERAL AMENITIES ARE ALSO PROVIDED.

MRS CHAN NOTED THAT THE OPENING OF THE NEW MARKET WOULD ALSO BENEFIT RESIDENTS OF WESTERN DISTRICT IN THAT THE GOVERNMENT WOULD BE BETTER PLACED TO RESOLVE THE ENVIRONMENTAL, OBSTRUCTION AND TRAFFIC CONGESTION PROBLEMS THAT HAD BEEN ASSOCIATED WITH SOME OF THE OLD MARKETS NOW RELOCATED IN THE NEW BUILDING.

SHE SAID PHASE II OF THE MARKET WAS ALREADY UNDER CONSTRUCTION ON THE SITE OF THE FORMER TEMPORARY FRUIT MARKET.

"IT IS DUE FOR COMPLETION IN 1994 AND WILL PROVIDE PERMANENT TRADING FACILITIES FOR POULTRY AND IMPORTED VEGETABLES.

"THAT WILL FURTHER IMPROVE THE WHOLESALE FACILITIES ON HONG KONG ISLAND AND THE GENERAL ENVIRONMENT IN WESTERN DISTRICT," SHE SAID.

ALSO PRESENT AT TODAY'S OPENING CEREMONY WAS THE DIRECTOR OF AGRICULTURE AND FISHERIES, DR LAWRENCE LEE.

EARLIER IN HIS SPEECH, DR LEE SAID THE WELL-DESIGNED AND STRATEGICALLY LOCATED MARKET WAS THE FIRST PERMANENT WHOLESALE MARKET FOR FRESH FOODSTUFFS TO BE BUILT BY THE GOVERNMENT.

HE SAID: "IT REPRESENTS THE CULMINATION OF MANY YEARS OF PLANNING AND WORK TO GROUP TOGETHER THE DIFFERENT WHOLESALE MARKETING TRADES UNDER ONE ROOF TO FORM A MARKET COMPLEX."

HE THANKED THOSE WHO HAD PARTICIPATED OVER THE YEARS IN THE PLANNING, DESIGN AND REALISATION OF THE MARKET COMPLEX; AS WELL AS THE MARKET TENANTS, THE TRANSPORTERS AND THE BUYERS FOR THEIR SUPPORT IN HELPING TO MAKE THE MARKET A SUCCESS.

MONDAY, JANUARY 27, 1992

- 13 -

CHANCE FOR YOUNG MUSICIANS TO ATTEND MUSIC CAMP IN USA

\* \* \* \* \*

A TALENTED YOUNG STRING PLAYER FROM HONG KONG WILL HAVE AN OPPORTUNITY TO RECEIVE INTENSIVE TRAINING IN SYMPHONIC MUSIC PERFORMANCE BY BECOMING A MEMBER OF THE WORLD YOUTH SYMPHONY ORCHESTRA IN THE 1992 NATIONAL MUSIC CAMP.

THE ANNUAL MUSIC CAMP AT INTERLOCHEN, MICHIGAN, USA IS RECOGNISED AS THE PREMIER FINE ARTS CAMP IN THE WORLD. THIS YEAR THE CAMP WILL BE HELD FROM JUNE 21 TO AUGUST 17.

THERE WILL BE MASTERCLASSES, WORKSHOPS AND PERFORMANCES BY SOME OF THE MOST RENOWNED ARTISTS IN THE WORLD.

THE MUSIC OFFICE IS INVITING INTERESTED MUSICIANS AGED BETWEEN 14 AND 18, WHO HAVE RESIDED IN HONG KONG FOR NOT LESS THAN THREE YEARS, AND HAVE ATTAINED GRADE VIII (PRACTICAL) IN THE ROYAL SCHOOLS OF MUSIC EXAMINATION OR EQUIVALENT TO APPLY FOR PARTICIPATION IN THE CAMP.

PREFERENCE WILL BE GIVEN TO THOSE WITH ORCHESTRAL EXPERIENCE AND A REASONABLE COMMAND OF ENGLISH.

APPLICANTS WILL HAVE TO ATTEND AN AUDITION ARRANGED BY THE MUSIC OFFICE IN MID MARCH.

THE SUCCESSFUL CANDIDATE WILL BE PROVIDED WITH FREE RETURN AIR PASSAGE DONATED BY THE CATHAY PACIFIC AIRWAY COMPANY LTD. AND A LOCAL ORGANISATION.

THE FEES FOR THE NATIONAL MUSIC CAMP WILL BE MET BY THE CAMP ORGANISER.

THE SELECTED CANDIDATE, HOWEVER, WILL HAVE TO PAY FOR HIS PERSONAL INSURANCE ABROAD, AND TO PLACE A SUM OF US\$300 IN HIS PERSONAL ACCOUNT WITH THE NATIONAL MUSIC CAMP TO MEET MINOR PERSONAL EXPENSES.

THE FINAL DECISION REGARDING THE SELECTION OF PARTICIPANT RESTS WITH THE MUSIC OFFICE.

APPLICATION FORMS ARE NOW AVAILABLE AT ALL MUSIC CENTRES OF THE MUSIC OFFICE, AND SHOULD BE COMPLETED AND RETURNED TO THE KWUN TONG MUSIC CENTRE, THIRD FLOOR, NGAU TAU KOK GOVERNMENT OFFICES, 21 ON WAH STREET, NGAU TAU KOK, BY FEBRUARY 17.

FURTHER ENQUIRIES CAN BE MADE ON TEL. 796 2891.

- - - - 0 - - - -

MONDAY, JANUARY 27, 1992

- 14 -

SPRING SCROLLS PUBLICISE DB MEET-THE-PUBLIC SCHEME  
\* \* \* \* \*

SPRING SCROLLS OR "FAI CHUNS" TO PUBLICISE THE NORTH DISTRICT BOARD'S MEET-THE-PUBLIC SCHEME ARE NOW AVAILABLE FREE OF CHARGE IN THE DISTRICT OFFICE ON A FIRST COME, FIRST SERVED BASIS.

PREPARED BY THE NORTH DISTRICT BOARD, THE "FAI CHUNS" SERVE THE DUAL PURPOSE OF BEING AN USEFUL ITEM FOR LUNAR NEW YEAR DECORATION AND REMINDING RESIDENTS TO MAKE USE OF THE BOARD'S MEET-THE-PUBLIC SCHEME.

THEY CAN BE OBTAINED FROM THE NORTH DISTRICT OFFICE'S FANLING PUBLIC ENQUIRY SERVICE CENTRE ON PIK FUNG ROAD, ITS CHOI YUEN SUB-OFFICE ON THE THIRD FLOOR OF CHOI YUK HOUSE, THE NORTH DISTRICT BOARD SECRETARIAT ON THE THIRD FLOOR OF NORTH GOVERNMENT OFFICES AND THE SHA TAU KOK COMMUNITY HALL.

SINCE ITS INTRODUCTION IN FEBRUARY 1983, THE MEET-THE-PUBLIC SCHEME OF THE NORTH DISTRICT BOARD HAS BECOME A CHANNEL OF COMMUNICATION BETWEEN RESIDENTS AND BOARD MEMBERS.

EVERY THURSDAY FROM 6 PM TO 8 PM, TWO DISTRICT BOARD MEMBERS WILL ANSWER RESIDENTS' ENQUIRIES, RECEIVE COMPLAINTS, HEAR SUGGESTIONS AND OFFER ASSISTANCE AT THE MEMBERS' INTERVIEW ROOM AT THE FANLING PUBLIC ENQUIRY SERVICE CENTRE ON PIK FUNG ROAD.

LAST YEAR, THE NORTH DISTRICT BOARD MEMBERS HANDLED A TOTAL OF 44 CASES, OF WHICH 37 HAD ALREADY BEEN RESOLVED.

THESE CASES WERE MAINLY RELATED TO HOUSING, TRAFFIC AND TRANSPORT, ENVIRONMENTAL, LAND AND PERSONAL PROBLEMS.

ANY PERSON WHO WISHES TO MEET THE NORTH DISTRICT BOARD MEMBERS CAN MAKE AN APPOINTMENT BY CALLING 675 1578.

- - - - 0 - - - -

WATER STORAGE FIGURE  
\* \* \* \* \*

STORAGE IN HONG KONG'S RESERVOIRS AT 9 AM TODAY (MONDAY) STOOD AT 29.9 PER CENT OF CAPACITY OR 175.476 MILLION CUBIC METRES.

THIS TIME LAST YEAR, THE RESERVOIRS CONTAINED 169.816 MILLION CUBIC METRES OF WATER, REPRESENTING 29 PER CENT OF CAPACITY.

A SPOKESMAN FOR THE WATER SUPPLIES DEPARTMENT ADVISED THE PUBLIC TO DO EVERYTHING THEY COULD TO CONSERVE WATER AND AVOID WASTAGE.

- - - - 0 - - - -

MONDAY, JANUARY 27, 1992

- 15 -

HONG KONG GOVERNMENT EXCHANGE FUND  
MONEY MARKET OPERATIONS  
\* \* \* \* \*

	DATE	\$ MILLION
	----	-----
CLOSING BALANCE IN THE ACCOUNT ON	25.1.92	1,100
EFFECT OF FORWARDS TO BE SETTLED ON	27.1.92	+813 *
EFFECT OF OPERATIONS THIS MORNING		-1,313
EFFECT OF OPERATIONS THIS AFTERNOON		+500 **
* O/N ASSISTANCE TO BE REVERSED	-500 MN	
OTHER FORWARDS TO BE SETTLED	+1313 MN	

\*\* O/N ASSISTANCE TO BE REVERSED ON 28 JANUARY 1992

TRADE WEIGHTED INDEX 110.4 \*\*0.3\* 27.1.92

HONG KONG GOVERNMENT EXCHANGE FUND

EF BILLS		HONG KONG GOVERNMENT BONDS				
TERMS	YIELD	TERM	ISSUE	COUPON	PRICE	YIELD
1 WEEK	4.73 PCT	23 MONTHS	2311	6.25	101.33	5.54
1 MONTH	4.45 PCT					
3 MONTHS	4.23 PCT					
6 MONTHS	4.23 PCT					
12 MONTHS	4.59 PCT					

TOTAL TURNOVER OF BILLS AND BONDS - 6,648 MN

CLOSED 27 JANUARY 1992

----- 0 -----