



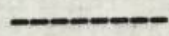
DAILY INFORMATION BULLETIN

MONDAY, MAY 24, 1976

CONTENTS

PAGE NO.

PRIVATE DONATIONS TOWARDS MEDICAL AND HEALTH SERVICES	1
EMPLOYMENT FIGURES UP IN MANUFACTURING INDUSTRY	2
FURTHER EXTENSION OF SPEEDPOST SERVICE	3
REDUNDANT TEACHERS REGISTERED FOR PLACEMENT	4
MINOR TRAFFIC DIVERSIONS IN MONG KOK FOR MTR CONSTRUCTION	5
TWO MAJOR HOUSING ESTATES NEARING COMPLETION	6



MONDAY, MAY 24, 1976.

- 1 -

PRIVATE DONATIONS TOWARDS MEDICAL AND HEALTH SERVICES
* * * * *

THERE HAS BEEN AND CONTINUES TO BE A ROLE FOR PRIVATE DONATIONS TOWARDS MEDICAL AND HEALTH SERVICES IN HONG KONG, THE SECRETARY FOR HOME AFFAIRS AND INFORMATION, MR. DENIS BRAY, SAID TODAY.

SPEAKING AT THE OPENING CEREMONY OF THE TANG CHI NGONG SPECIALIST CLINIC, HE SAID THESE DONATIONS WOULD SERVE TO SPEED UP THE GOVERNMENT'S BASIC PROGRAMME, +FOR WHATEVER PACE THE GOVERNMENT ACTS IT IS CONSTRAINED BY OTHER DEMANDS ON THE PUBLIC PURSE.+

MR. BRAY SAID THAT SIR SHIU KIN TANG, WHO HAD RENDERED UNFAILING SUPPORT TO THE MEDICAL DEVELOPMENT OF HONG KONG FOR MANY YEARS, HAD BEEN RESPONSIBLE EITHER IN WHOLE OR IN PART FOR THE FINANCIAL PROVISIONS OF AT LEAST EIGHT MAJOR PROJECTS, INCLUDING THE NEW CLINIC.

THE FOLLOWING IS THE FULL TEXT OF MR. BRAY'S SPEECH:-

+LADIES AND GENTLEMEN,

+MEDICAL AND HEALTH SERVICES IN HONG KONG HAVE BENEFITED MUCH FROM DONATIONS RECEIVED FROM A NUMBER OF VOLUNTARY ORGANISATIONS AND INDIVIDUALS. NOWADAYS THE GOVERNMENT ACCEPTS THE RESPONSIBILITY TO FINANCE MEDICAL SERVICES FROM GENERAL REVENUE. THERE HAS BEEN AND CONTINUES TO BE A ROLE FOR PRIVATE DONATIONS. THESE SERVE TO SPEED UP THE GOVERNMENT'S BASIC PROGRAMME, FOR WHATEVER PACE THE GOVERNMENT ACTS IT IS CONSTRAINED BY OTHER DEMANDS ON THE PUBLIC PURSE. WE RECOGNISE THERE IS ALWAYS ROOM FOR A SPEEDING UP AND SO PLAN THAT WHEN A DONATION IS RECEIVED IT MAKES A REAL AND VALUABLE CONTRIBUTION TO SERVICES WE BELIEVE THE PUBLIC WANTS. FOR MANY YEARS SIR SHIU KIN TANG HAS RENDERED UNFAILING SUPPORT TO THE MEDICAL DEVELOPMENT OF THE COLONY. HE HAS BEEN RESPONSIBLE EITHER IN WHOLE OR IN PART FOR THE CAPITAL FINANCIAL PROVISIONS OF AT LEAST EIGHT MAJOR PROJECTS OF A MEDICAL NATURE, INCLUDING THIS ONE.

+IT WAS FIVE YEARS AGO WHEN SIR DAVID TRENCH LAID THE FOUNDATION STONE OF THIS CLINIC ON MAY 20, 1971, BUT THE PLANNING OF THE CLINIC DATES BACK TO 1968. FROM THE VERY START, SIR SHIU KIN HAD OFFERED TO DONATE \$500,000 TO THE PROJECT AND WHEN THE COST WAS LATER REVISED TO MORE THAN \$6 MILLION, SIR SHIU KIN INCREASED HIS CONTRIBUTION TO \$1.4 MILLION. THIS CLINIC IS NAMED, IN ACCORDANCE WITH SIR SHIU KIN'S WISH, AFTER HIS LATE FATHER, MR. TANG CHI-NGONG.

+THE TANG CHI NGONG SPECIALIST CLINIC IS AN EIGHT-STOREY BUILDING AND WILL PROVIDE SPECIALIST OUT-PATIENT FACILITIES FOR MEDICINE, SURGERY, OPHTHALMOLOGY, GYNAECOLOGY, EAR, NOSE AND THROAT SURGERY, SPECIAL SKIN AS WELL AS ANCILLARY AND ADMINISTRATIVE SERVICES. IT WILL DEAL WITH PATIENTS REFERRED FROM GENERAL OUT-PATIENT CLINICS AND OTHER DOCTORS FOR SPECIALIST OPINIONS AND SPECIAL FOLLOW-UP TREATMENT AND IN ADDITION, THE EXAMINATION OF PATIENTS DISCHARGED FROM HOSPITALS. THE CLINIC IS INTENDED TO REPROVISION THE OPHTHALMIC CLINIC AND THE PART-TIME SPECIALIST OUT-PATIENT CLINIC CURRENTLY HELD AT VIOLET PEEL POLYCLINIC AND WILL CATER FOR THE EASTERN PART OF THE ISLAND. VIOLET PEEL POLYCLINIC WILL THEREAFTER BE TURNED INTO A GENERAL OUT-PATIENT CLINIC, WITH DAY AND EVENING SESSIONS.

/+SIMILAR

MONDAY, MAY 24, 1976

- 2 -

+SIMILAR SPECIALIST CLINIC FACILITIES ARE PROVIDED BY THE SAI YING PUN JOCKEY CLUB POLYCLINIC IN ISLAND WEST, AND IN KOWLOON, BY THE SPECIALIST CLINIC AT QUEEN ELIZABETH HOSPITAL AND THE YAUMATI POLYCLINIC. IN ORDER TO MEET THE INCREASING NEEDS OF THE RESIDENTS FOR CONSULTATIONS IN NORTH-WEST KOWLOON, KWAI CHUNG, TSUEN WAN AND TSING YI, AND TO SERVE AS A SPECIALIST CLINIC FOR THE PRINCESS MARGARET HOSPITAL, THE SOUTH KWAI CHUNG JOCKEY CLUB POLYCLINIC WHICH INCORPORATES A SPECIALIST CLINIC WILL BE PUT INTO OPERATION IN THE LATTER HALF OF 1976.

+IT IS MY GREAT PLEASURE TO BE HERE TODAY TO PERFORM THE OPENING CEREMONY OF THE TANG CHI NGONG SPECIALIST CLINIC. I NOW DECLARE IT OPEN.+

- - - - 0 - - - -

EMPLOYMENT UP IN MANUFACTURING INDUSTRY
* * * * *

THE NUMBER OF PEOPLE EMPLOYED IN MANUFACTURING ESTABLISHMENTS IN HONG KONG IN THE MIDDLE OF MARCH THIS YEAR WAS 698,787. THIS REPRESENTED AN INCREASE OF 19,930 OR 2.9 PER CENT WHEN COMPARED WITH THE FIGURE OF 678,857 FOR DECEMBER LAST YEAR.

THE LATEST STATISTICS ARE THE RESULT OF A SURVEY CARRIED OUT BY THE CENSUS AND STATISTICS DEPARTMENT.

AT THE INDUSTRY SECTOR LEVEL, MAIN INCREASES WERE RECORDED IN GARMENTS (+10,821), COTTON WEAVING (+1,789), PLASTIC TOYS (+1,589), MISCELLANEOUS PLASTIC PRODUCTS (+1,148) AND HANDBAGS (+612). DECREASES WERE RECORDED IN COTTON SPINNING (-379), METAL WRIST WATCH BANDS (-333), BLEACHING AND DYEING (-315), GLOVES (-280) AND RUBBER FOOTWEAR (-271).

IN TERMS OF EMPLOYMENT, THE FIVE LARGEST INDUSTRY GROUPS REMAINED WEARING APPAREL (249,883), TEXTILES (114,973), ELECTRICAL MACHINERY, APPLIANCES AND SUPPLIES (67,224), PLASTIC PRODUCTS (66,485) AND FABRICATED METAL PRODUCTS (58,221).

WHEN COMPARED WITH A TOTAL OF 591,659 PERSONS ENGAGED IN MARCH 1975, THE NUMBER OF PEOPLE EMPLOYED IN MANUFACTURING INDUSTRY IN MARCH THIS YEAR SHOWED AN INCREASE OF 107,128 PERSONS OR 18 PER CENT.

- - - - 0 - - - -

/3

MONDAY, MAY 24, 1976

- 3 -

FURTHER EXTENSION OF SPEEDPOST SERVICE
* * * * *

THE POST OFFICE IS TO EXTEND SPEEDPOST SERVICE TO FRANCE FROM NEXT MONDAY (MAY 31).

ANNOUNCING THIS TODAY, A SPOKESMAN FOR THE POST OFFICE SAID THIS FOLLOWED THE SUCCESSFUL INTRODUCTION OF THE SERVICE TO BRITAIN, THE UNITED STATES, BRAZIL, JAPAN, BELGIUM AND AUSTRALIA.

HE SAID THAT UNDER THIS ARRANGEMENT, INTERNATIONAL PACKAGES OF BUSINESS PAPERS, DOCUMENTS, AND SAMPLES WOULD BE GIVEN FAST AND RELIABLE DOOR TO DOOR COLLECTION AND DELIVERY SERVICE.

+TIMES OF COLLECTION AND DELIVERY ARE SPECIFIED AND AGREED WITH THE CUSTOMER UTILISING PRE-DETERMINED FLIGHTS, AND SPECIAL FACILITIES ARE GIVEN BY THE FRENCH POSTAL ADMINISTRATION IN DELIVERING THE PACKAGES,+ THE SPOKESMAN SAID.

+PACKAGES COLLECTED IN HONG KONG WHEN NORMAL COMMERCIAL BUSINESS IS COMPLETED FOR THE DAY WILL BE DESPATCHED ON A FLIGHT LEAVING KAI TAK IN THE SAME EVENING AND ARRIVE IN PARIS ON THE AFTERNOON OF THE FOLLOWING DAY, FOR SUBSEQUENT SPECIAL DELIVERY IN FRANCE.+

THE COST OF THE SERVICE, WHICH WILL BE ON A CONTRACT BASIS, WILL BE A BASIC HK\$80 FOR THE FIRST POUND, PLUS HK\$15 FOR EACH SUBSEQUENT POUND OR PART OF A POUND.

CUSTOMERS WISHING MORE INFORMATION ABOUT THE SERVICE ARE ASKED TO CONTACT THE POST OFFICE REPRESENTATIVE ON 5-245992.

- - - - 0 - - - -

/4

MONDAY, MAY 24, 1976

- 4 -

REDUNDANT TEACHERS REGISTERED FOR PLACEMENT
* * * * *

THE EDUCATION DEPARTMENT'S PLACEMENT SERVICE TODAY BEGAN REGISTERING REDUNDANT TEACHERS AS A RESULT OF THE CLOSURE OF UNDER-UTILISED CLASSES IN SUBSIDISED PRIMARY SCHOOLS.

UP TO 5 P.M. 37 TEACHERS HAD PRESENTED THEMSELVES FOR REGISTRATION.

ALL TEACHERS CONCERNED HAVE BEEN NOTIFIED IN WRITING THAT THEY MUST REGISTER BY 5 P.M. ON MAY 28 (FRIDAY).

MR. LEE TZE-CHUN, SENIOR EDUCATION OFFICER IN CHARGE OF THE PLACEMENT SERVICE, SAID THAT HE WAS CONFIDENT THAT ALL THE ESTIMATED 220 REDUNDANT TEACHERS WOULD BE FOUND ALTERNATIVE POSTS IN OTHER SUBSIDIZED PRIMARY SCHOOLS WHERE THERE WERE VACANCIES ARISING FROM THE OPENING OF NEW CLASSES, RETIREMENT AND NORMAL WASTAGE.

MR. LEE SAID THAT 316 NEW CLASSES WOULD BE OPENED IN NEW AND DEVELOPING SUBSIDISED PRIMARY SCHOOLS THROUGHOUT HONG KONG, KOWLOON AND THE NEW TERRITORIES IN THE ACADEMIC YEAR BEGINNING SEPTEMBER 1976.

HE POINTED OUT THAT THE NUMBER OF UNDER-UTILISED CLASSES TO BE PHASED OUT WAS 216.

MR. LEE SAID THAT AS FROM JUNE 1 HIS PLACEMENT SERVICE WOULD START REFERRING REDUNDANT TEACHERS TO THE MANAGEMENT COMMITTEES OF OTHER SUBSIDISED PRIMARY SCHOOLS FOR CONSIDERATION OF APPOINTMENT.

HE ANTICIPATED THAT THE PLACEMENT OF THE TEACHERS CONCERNED WOULD BE COMPLETED BY THE END OF JULY.

THE ASSISTANT DIRECTOR OF EDUCATION (PRIMARY), MR. LAM TAT-LAU, WENT TO THE OFFICE OF THE PLACEMENT SERVICE AT 405, NATHAN ROAD, KOWLOON, THIS AFTERNOON.

HE SAID AFTERWARDS THAT REGISTRATION WAS PROCEEDING SMOOTHLY.

MR. LAM ADDED: +I AM SURE THAT WITH THE CLOSE CO-OPERATION OF SCHOOL SPONSORS NOT A SINGLE REDUNDANT TEACHER WOULD BE OUT OF A JOB.+

- - - - 0 - - - -

/5

MONDAY, MAY 24, 1976

- 5 -

MINOR TRAFFIC DIVERSIONS IN MONG KOK FOR MTR CONSTRUCTION
* * * * *

THE NORTHBOUND TRAFFIC LANE IN NATHAN ROAD BETWEEN MONG KOK ROAD AND PRINCE EDWARD ROAD WILL BE RE-ROUTED SOUTHBOUND FROM 10 A.M. ON WEDNESDAY, MAY 26, 1976. THE CHANGE WILL IN EFFECT MAKE THIS SECTION OF NATHAN ROAD ONE-WAY SOUTHBOUND.

ACCESS TO ARRAN STREET AND LAI CHI KOK ROAD WILL BE AFTER WEDNESDAY BY MEANS OF A RIGHT TURN FROM NATHAN ROAD SOUTHBOUND.

THE TRAFFIC RE-ROUTINGS ARE NECESSARY TO ALLOW THE MASS TRANSIT RAILWAY CONTRACTOR TO CARRY OUT THE DIVERSION OF UTILITIES AND OTHER PRELIMINARY WORK PRIOR TO THE BEGINNING OF MAJOR CONSTRUCTION ON PRINCE EDWARD STATION.

MOTORISTS WHOSE DESTINATIONS ARE IN LAI CHI KOK ROAD BETWEEN NATHAN ROAD AND SHANGHAI STREET SHOULD NOTE THAT FROM WEDNESDAY THEY CANNOT TURN LEFT FROM MONG KOK ROAD INTO NATHAN ROAD NORTHBOUND.

INSTEAD THEY SHOULD CONTINUE EASTWARDS IN MONG KOK ROAD TO SAI YEE STREET WHERE THEY SHOULD TURN LEFT AND PROCEED NORTHWARD TO PRINCE EDWARD ROAD.

IN PRINCE EDWARD ROAD, THEY SHOULD PROCEED WESTWARD TO NATHAN ROAD, TURN LEFT INTO NATHAN ROAD, PROCEED SOUTHWARDS TO LAI CHI KOK ROAD AND TURN RIGHT INTO LAI CHI KOK ROAD.

APPROPRIATE TRAFFIC SIGNS WILL BE SET UP TO GUIDE MOTORISTS.

- - - - 0 - - - -

/6

MONDAY, MAY 24, 1976

- 6 -

TWO MAJOR HOUSING ESTATES NEARING COMPLETION
* * * * *

HONG KONG'S HOUSING PROGRAMME PASSED ANOTHER MILESTONE THIS MONTH WITH THE COMPLETION OF TWO NEW MAJOR ESTATES BY THE PUBLIC WORKS DEPARTMENT'S ARCHITECTURAL OFFICE.

THE TWO LATEST HOUSING COMPLEXES ARE THE \$50 MILLION LEK YUEN ESTATE AT SHA TIN AND THE \$53 MILLION HING WAH ESTATE AT CHAI WAN, WHICH TOGETHER PROVIDE HOMES FOR SOME 37,700 PEOPLE.

AND THE LAST FEW BLOCKS OF TWO OTHERS -- LAI KING AND KWAI SHING -- NOW NEARING COMPLETION AT KWAI CHUNG SHOULD BE READY IN THE NEXT TWO MONTHS TO HOUSE ANOTHER 57,000 PEOPLE.

THESE FOUR ESTATES ARE AMONG EIGHT BEING BUILT BY THE P.W.D.'S ARCHITECTURAL OFFICE UNDER THE HOUSING AUTHORITY'S 10-YEAR HOUSING PLAN.

THE REMAINING IN THE P.W.D.'S BUILDING PROGRAMME ARE SHUN LEE TSUEN AT CLEARWATER BAY ROAD, YU WAN AT CHAI WAN, PAK TIN AT SHEK KIP MEI, AND TAI HING AT TUEN MUN -- ALL OF WHICH ARE UNDER VARIOUS STAGES OF CONSTRUCTION.

+ALL THESE ESTATES ARE BASED ON THE NEW CONCEPT OF PROVIDING AN INTEGRATED COMMUNITY, RATHER THAN MERELY BASIC ACCOMMODATION,+ MR. JOSEPH LEI, CHIEF P.W.D. ARCHITECT, SAID TODAY.

+THIS MEANS NOT ONLY BUILDING HIGHER STANDARD ACCOMMODATION, BUT INCORPORATING ALL BASIC COMMUNITY AND COMMERCIAL FACILITIES THAT ARE AN ESSENTIAL PART OF A BALANCED COMMUNITY.

+TO THIS END, LARGE RECREATIONAL AREAS WITH REST GARDENS AND PLAYGROUNDS, WELFARE CENTRES, SHOPPING AND MARKET CENTRES, CARPARKS, RESTAURANTS, AS WELL AS SCHOOLS AND CLINICS ARE PROVIDED AS INTEGRAL PARTS OF OUR NEW HOUSING ESTATES,+ HE SAID.

THE P.W.D. ARCHITECTURAL OFFICE IS NOW IN THE PROCESS OF HANDING OVER THE NEWLY-COMPLETED ESTATES TO THE HOUSING AUTHORITY, AND IT IS EXPECTED THAT TENANTS WILL BE MOVING IN SOON.

LEK YUEN ESTATE COMPRISES SEVEN DOMESTIC BLOCKS AND COVERS AN AREA OF 10 HECTARES (25 ACRES). IT IS A SELF-CONTAINED DEVELOPMENT WITH ITS OWN SHOPPING CENTRE, COMMUNITY FACILITIES AND PUBLIC TRANSPORT SERVICES.

TWO OF THE SEVEN BLOCKS WERE COMPLETED AND HANDED OVER EARLY THIS YEAR AND ARE ALREADY PARTLY OCCUPIED. THE REMAINING FIVE BLOCKS WERE FINISHED AT THE BEGINNING OF THIS MONTH.

THE ESTATE PROVIDES A TOTAL OF 3,250 FLATS OF THREE BASIC SIZES FOR FAMILIES WITH FIVE, SEVEN AND NINE PERSONS.

/THE LARGEST

MONDAY, MAY 24, 1976

- 7 -

THE LARGEST FLAT IS 320 SQUARE FEET AND THE SMALLEST 178 SQUARE FEET, EXCLUDING KITCHEN, TOILET AND BALCONY. THE DEEPEMED BALCONY AREA ALSO PROVIDES A MORE REGULAR SHAPED USEFUL AREA FOR TENANTS.

THE ESTATE INCORPORATES A WIDE RANGE OF FACILITIES, INCLUDING TWO ESTATE SCHOOLS WITH 24 CLASSROOMS EACH, A WELFARE HALL, A CLINIC, LIBRARY, MARKET FACILITIES AND TWO RESTAURANTS.

FOR THE CONVENIENCE OF THE RESIDENTS, P.W.D. ARCHITECTS HAVE GROUPED RETAIL FACILITIES AROUND A CENTRALLY LOCATED COURT ON AN ELEVATED DECK, WITH PARKING, SERVICE AREAS AND STORAGE FACILITIES AT A LOWER, PARTIALLY UNDERGROUND LEVEL.

A TWO-STOREY SHOPPING CENTRE, WHICH IS FULLY AIR-CONDITIONED, IS LOCATED AT THE HEART OF THE ESTATE AND PROVIDES A TOTAL OF 30,100 SQUARE FEET OF COMMERCIAL SPACE FOR SUPERMARKETS AND SHOPS.

A NEW FEATURE, INTRODUCED IN LOCAL HOUSING ESTATES BY P.W.D. ARCHITECTS, IS A SYSTEM OF COVERED WALKWAYS LINKING THE DOMESTIC BLOCKS WITH THE COMMERCIAL COMPLEX PROVIDING TENANTS WITH DIRECT ACCESS TO THE SHOPPING CENTRE WITHOUT HAVING TO STEP OUTSIDE OR WORRY ABOUT CARS AND BAD WEATHER.

TO CATER FOR THE RECREATIONAL NEEDS OF THE RESIDENTS, ABOUT TWO HECTARES (5 ACRES) OF OPEN SPACE IS PROVIDED IN AND AROUND THE ESTATE WITH REST GARDENS, PLAYGROUNDS, SOCCER PITCHES AND BASKETBALL COURTS. A LARGE SITE HAS ALSO BEEN RESERVED FOR A POSSIBLE SWIMMING POOL.

PUBLIC TRANSPORT REQUIREMENTS ARE ALSO ADEQUATELY PROVIDED FOR WITH A BUS SUB-STATION AND A PUBLIC LIGHT BUS TERMINUS IN THE CENTRE OF THE ESTATE.

HING WAH ESTATE AT CHAI WAN, THE SECOND COMPLETED ESTATE NOW BEING HANDED OVER, COMPRISES EIGHT MULTI-STOREY DOMESTIC BLOCKS WHICH WILL HOUSE A TOTAL OF 22,700 PEOPLE.

LIKE LEK YUEN, IT IS A SELF-CONTAINED ESTATE WITH TWO ESTATE SCHOOLS, A WELFARE HALL, MARKET, RESTAURANT AND LARGE AREAS OF OPEN SPACE WITH PLAYGROUNDS AND REST GARDENS.

THE FIRST TWO BLOCKS OF HING WAH ESTATE WERE COMPLETED ON FEBRUARY 20 THIS YEAR -- SIX WEEKS AHEAD OF SCHEDULE -- UNDER A CRASH BUILDING PROGRAMME LAUNCHED BY THE P.W.D. ARCHITECTURAL OFFICE FOLLOWING THE ALDRICH BAY FIRE.

UNDER THE EMERGENCY PLAN, EIGHT WEEKS OF WORKS WERE CONDENSED INTO JUST TWO-AND-A-HALF WEEKS, AND ENABLED THE HOUSING AUTHORITY TO ARRANGE FOR THE EARLY REHOUSING OF SOME OF THE 3,200 PEOPLE WHO LOST THEIR HOMES IN THE FIRE.

- - - - - 0 - - - - -