



DAILY INFORMATION BULLETIN

ISSUED BY GOVERNMENT INFORMATION SERVICES
BEACONSFIELD HOUSE, HONG KONG. TEL.: 842 8777

TUESDAY, OCTOBER 27, 1992

<u>CONTENTS</u>	<u>PAGE NO.</u>
CONSUMER PRICE INDICES FOR SEPTEMBER	1
FS COMMENTS ON CONSUMER PRICE INDICES	7
GOVERNOR CONGRATULATES PARALYMPIC ATHLETES	9
NEW DIRECTOR OF LEGAL AID APPOINTED	9
SEVEN MORE HIV INFECTED CASES CONFIRMED	10
DOWNS SYNDROME BOY OFFERED ADOPTIVE HOME IN U.S.	12
UNIFIED SALARY SCALE FOR HOME HELPERS	13
VALUE ADDED DATA AND FAX SERVICES EXTENDED TO AUSTRALIA	14
SURVEY ON TIMBER INDUSTRY PLANNED	15
STUDY TOUR ON FISHERIES	15
FRESH WATER CUT IN SAI KUNG	16
UNAUTHORISED BUILDING WORKS TO BE CLOSED	16
198 VMS RETURNED TODAY	17
HONG KONG GOVERNMENT EXCHANGE FUND TENDER RESULTS	17
HONG KONG GOVERNMENT EXCHANGE FUND MONEY MARKET OPERATIONS ..	18

TUESDAY, OCTOBER 27, 1992

- 1 -

CONSUMER PRICE INDICES FOR SEPTEMBER

* * * * *

THE CONSUMER PRICE INDEX (A) IN SEPTEMBER 1992 WAS 9.9% HIGHER THAN IN SEPTEMBER 1991, ACCORDING TO THE FIGURES RELEASED TODAY (TUESDAY) BY THE CENSUS AND STATISTICS DEPARTMENT.

THIS WAS HIGHER THAN THE FIGURE OF 8.3% IN THE PRECEDING MONTH.

THE CPI(B) AND THE HANG SENG CPI WERE BOTH HIGHER BY 10.2% IN SEPTEMBER 1992 THAN IN SEPTEMBER LAST YEAR. THE CORRESPONDING INCREASES IN AUGUST 1992 WERE 9.1% AND 9.8%.

THE COMPOSITE CPI, WHICH WAS COMPILED BASED ON THE COMBINED EXPENDITURE PATTERN OF HOUSEHOLDS COVERED BY THE THREE CPIS, SHOWED AN INCREASE OF 10.1% IN SEPTEMBER 1992 OVER THE SAME MONTH IN 1991. THE CORRESPONDING INCREASE IN AUGUST 1992 WAS 9.0%.

THE HIGHER YEAR-ON-YEAR RATES OF INCREASE IN THE CPIS IN SEPTEMBER THAN IN AUGUST THIS YEAR WERE MAINLY DUE TO A SHARP INCREASE IN THE PRICES OF FRESH VEGETABLES AND HIGHER RENT FOR SOME PUBLIC HOUSING ESTATES AND PRIVATE HOUSING UNITS.

MOREOVER, SEPTEMBER 1991 WAS A RELATIVELY LOW BASE FOR COMPARISON.

COMPARING SEPTEMBER 1992 WITH SEPTEMBER 1991, RELATIVELY SLOWER INCREASES IN PRICES WERE RECORDED FOR DURABLE GOODS (2.3% IN THE CPI(A) AND 2.4% IN THE CPI(B)); TRANSPORT (6.5% AND 7.0%); FUEL AND LIGHT (7.0% AND 6.8%); FOOD (EXCLUDING MEALS AT RESTAURANTS) (7.1% AND 6.8%); AND MISCELLANEOUS GOODS (7.4% AND 7.0%).

ON THE OTHER HAND, RELATIVELY FASTER INCREASES IN PRICES WERE RECORDED FOR CLOTHING AND FOOTWEAR (10.0% IN THE CPI(A) AND 10.1% IN THE CPI(B)); MEALS AT RESTAURANTS (10.4% IN BOTH CPIS); ALCOHOLIC DRINKS AND TOBACCO (11.5% IN BOTH CPIS); SERVICES (12.1% IN THE CPI(A) AND 10.8% IN THE CPI(B)); AND HOUSING (14.6% AND 15.0%).

COMPARING SEPTEMBER 1992 WITH AUGUST 1992, THE CPI(A) INCREASED BY 2.2% WHILE THE CPI(B) AND THE HANG SENG CPI INCREASED BY 1.6% AND 1.3% RESPECTIVELY. THIS COMPARISON WAS, HOWEVER, AFFECTED BY SEASONAL FACTORS.

THE INCREASES WERE LARGELY DUE TO A SIGNIFICANT RISE IN THE PRICES OF FRESH VEGETABLES, HIGHER RENT FOR SOME PUBLIC AND PRIVATE HOUSING UNITS, AND THE ANNUAL INCREASE IN SCHOOL FEES.

FOR THE THREE MONTHS ENDING SEPTEMBER 1992, THE CPI(A) WAS, ON AVERAGE, HIGHER BY 9.0% THAN IN THE SAME PERIOD LAST YEAR. THE CORRESPONDING FIGURE FOR THE CPI(B) WAS 9.5%.

/FOR THE

FOR THE PERIOD FROM JANUARY TO SEPTEMBER 1992, THE CPI(A) AND THE CPI(B) WERE, ON AVERAGE, HIGHER BY 9.4% AND 9.6% RESPECTIVELY THAN IN THE CORRESPONDING PERIOD IN 1991.

FOR THE 12 MONTHS ENDING SEPTEMBER 1992, THE CPI(A) AND THE CPI(B) WERE, ON AVERAGE, HIGHER BY 9.7% AND 9.8% RESPECTIVELY THAN IN THE PRECEDING TWELVE-MONTH PERIOD.

SEASONALLY ADJUSTED SERIES ARE ALSO AVAILABLE FOR THE INDICES.

THE DESEASONALISED CPI(A) AND CPI(B) BOTH INCREASED AT AN AVERAGE RATE OF 0.7% PER MONTH DURING THE THREE MONTHS ENDING SEPTEMBER 1992.

THE CONSUMER PRICE INDEX REPORT

MORE DETAILS ARE GIVEN IN THE "CONSUMER PRICE INDEX REPORT" FOR SEPTEMBER 1992, WHICH IS AVAILABLE AT \$9 A COPY FROM THE GOVERNMENT PUBLICATIONS SALES CENTRE, GENERAL POST OFFICE BUILDING, GROUND FLOOR, CONNAUGHT PLACE, HONG KONG; OR FROM THE CENSUS AND STATISTICS DEPARTMENT, 19TH FLOOR, WANCHAI TOWER I, 12 HARBOUR ROAD, WAN CHAI, HONG KONG; OR FROM THE INFORMATION SERVICES DEPARTMENT, FRENCH MISSION BUILDING, 1 BATTERY PATH, HONG KONG FOR LOCAL AND OVERSEAS MAILINGS.

FOR ENQUIRIES ABOUT THE INDICES, PLEASE TELEPHONE THE CONSUMER PRICE INDEX SECTION OF THE CENSUS AND STATISTICS DEPARTMENT ON TEL 805 6403.

DETAILS REGARDING THE HANG SENG CPI ARE CONTAINED IN THE HANG SENG CPI REPORT ISSUED BY THE ECONOMIC RESEARCH DEPARTMENT OF HANG SENG BANK LTD.

- - - - -

Table 1 Consumer Price Indices and Rates of Increase for September 1992
(Oct. 89 - Sep. 90 = 100)

Component	CPI(A)		CPI(B)		Hang Seng CPI		Composite CPI	
	Index for Sep 92	% change over Sep 91	Index for Sep 92	% change over Sep 91	Index for Sep 92	% change over Sep 91	Index for Sep 92	% change over Sep 91
Food	127.2	+8.8	127.8	+8.9	126.3	+10.0	127.3	+9.1
Meals bought away from home	131.8	+10.4	131.8	+10.4	128.0	+11.9	131.0	+10.7
Food, excluding meals bought away from home	122.6	+7.1	122.3	+6.8	123.3	+6.9	122.6	+7.0
Housing	136.3	+14.6	136.4	+15.0	135.5	+11.8	136.1	+13.9
Fuel and light	116.4	+7.0	115.8	+6.8	115.6	+6.3	116.0	+6.8
Alcoholic drinks and tobacco	161.8	+11.5	154.2	+11.5	150.9	+11.9	157.6	+11.5
Clothing and footwear	118.1	+10.0	119.3	+10.1	125.5	+13.9	121.1	+11.4
Durable goods	107.1	+2.3	106.7	+2.4	110.6	+4.5	108.0	+3.0
Miscellaneous goods	116.2	+7.4	115.1	+7.0	114.4	+6.3	115.3	+6.9
Transport	126.4	+6.5	126.4	+7.0	127.7	+7.3	126.7	+6.9
Services	135.6	+12.1	132.1	+10.8	126.5	+10.0	131.5	+11.0
All items	128.3	+9.9	127.9	+10.2	127.5	+10.2	128.0	+10.1

The 1989/90-based consumer price indices are based on the expenditure patterns derived from the 1989/90 Household Expenditure Survey. The CPI(A) is based on the expenditure pattern of about 50% of urban households in Hong Kong, which had an average monthly expenditure of \$2,500-\$9,999 a month in 1989/90. The CPI(B) is based on the expenditure pattern of the next 30% of urban households, which had an average monthly expenditure of \$10,000-\$17,499 in the same period. The Hang Seng CPI is based on the expenditure pattern of the next 10% of urban households, which had an average monthly expenditure of \$17,500-\$37,499 in 1989/90.

Whereas the CPI(A), CPI(B) and Hang Seng CPI are based on the expenditure patterns of groups of households with different magnitudes of household expenditure, the Composite CPI is compiled based on the expenditure pattern of all these households taken together. Thus, while the CPI(A), CPI(B) and Hang Seng CPI show the impact of consumer price changes on different groups of households, the Composite CPI shows the impact of consumer price changes on the household sector generally.

Table 2 Consumer Price Indices for October 1990 - September 1992
(Oct. 89 - Sep. 90 = 100)

<u>Year/month</u>	<u>CPI(A)</u>	<u>CPI(B)</u>	<u>Hang Seng CPI</u>	<u>Composite CPI</u>
1990 October	105.8	105.9	106.7	106.1
November	106.5	106.7	107.8	106.9
December	107.4	107.6	108.1	107.7
1991 January	108.3	108.4	108.6	108.4
February	110.3	110.1	110.2	110.2
March	111.9	111.1	110.7	111.3
April	113.9	113.0	112.0	113.1
May	114.0	113.6	113.4	113.7
June	114.6	114.1	113.9	114.2
July	115.4	114.8	113.9	114.8
August	116.0	115.3	114.6	115.4
September	116.8	116.1	115.8	116.3
October	117.2	116.8	117.4	117.1
November	117.7	117.6	118.7	117.9
December	118.1	118.3	118.5	118.3
1992 January	119.7	119.3	119.4	119.5
February	121.8	121.2	121.0	121.4
March	122.5	121.9	121.8	122.1
April	124.0	123.4	122.9	123.5
May	124.0	123.8	124.2	124.0
June	125.3	125.1	125.2	125.2
July	125.5	125.4	125.4	125.4
August	125.6	125.9	125.8	125.8
September	128.3	127.9	127.5	128.0

/Chart 1

Chart 1 Year-on-year Rates of Increase
in CPI(A)

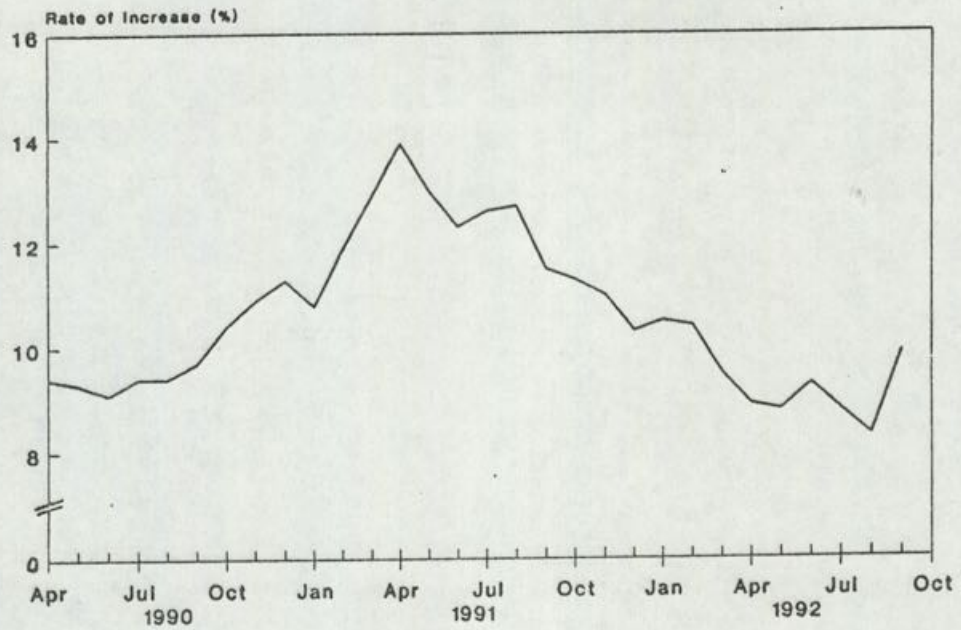
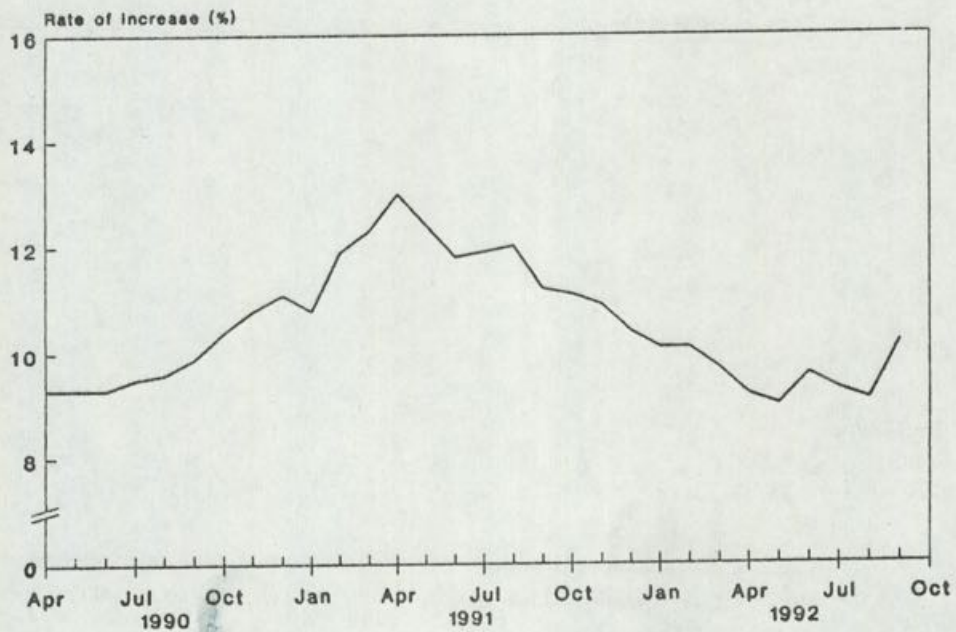


Chart 2 Year-on-year Rates of Increase
in CPI(B)



/Chart 3

Chart 3 Year-on-year Rates of Increase in Hang Seng CPI

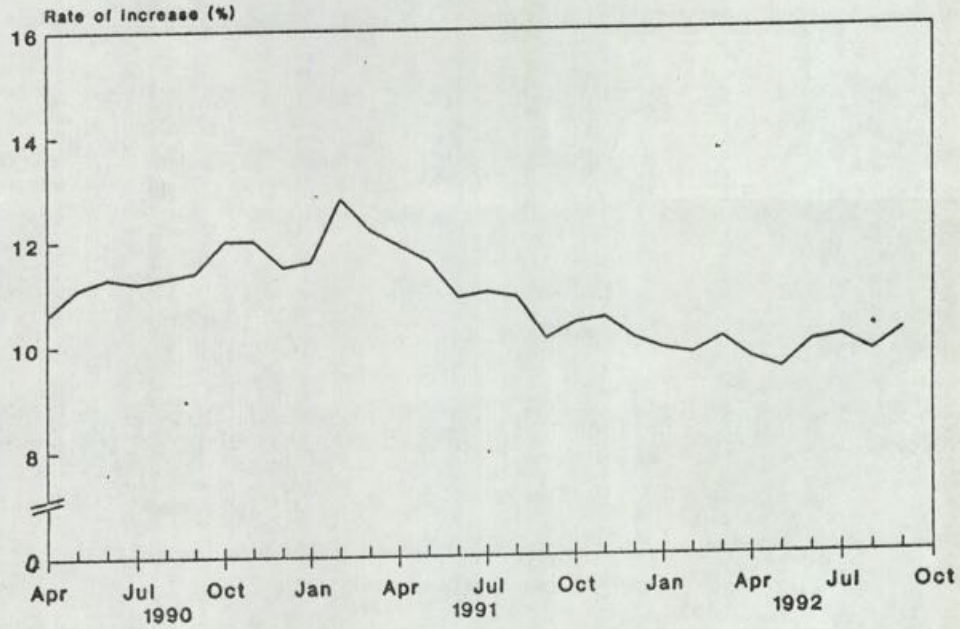
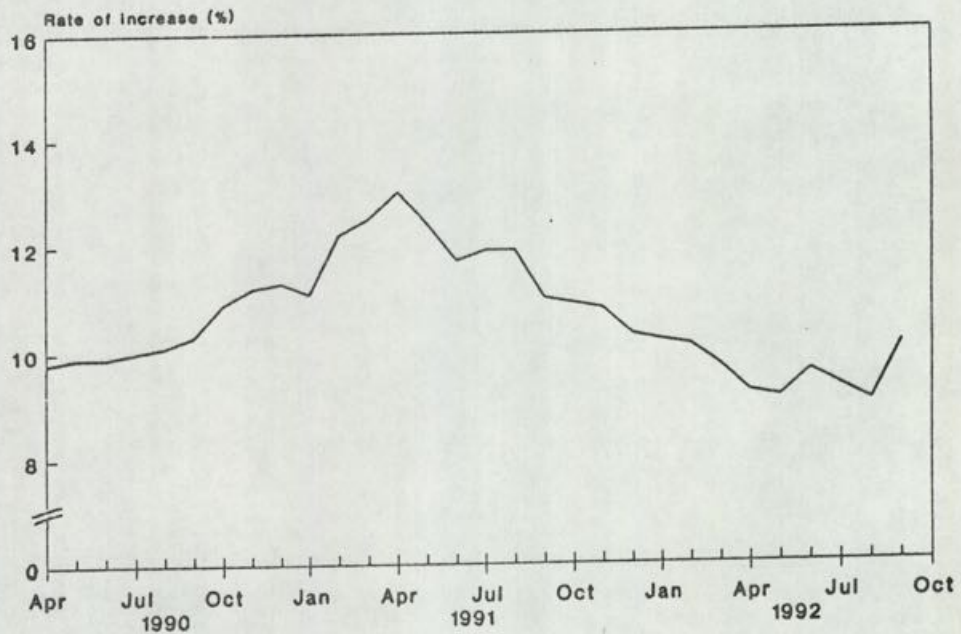


Chart 4 Year-on-year Rates of Increase in Composite CPI



TUESDAY, OCTOBER 27, 1992

- 7 -

FS COMMENTS ON CONSUMER PRICE INDICES

* * * * *

COMMENTING ON THE CONSUMER PRICE INDICES FOR SEPTEMBER, THE FINANCIAL SECRETARY, MR HAMISH MACLEOD, SAID TODAY (TUESDAY):

"SPECIAL FACTORS AFFECTING YEAR-ON-YEAR COMPARISONS OF VEGETABLE PRICES, PLUS INCREASES IN PUBLIC HOUSING RENTS, DISTORTED THE FIGURES LAST MONTH.

"THIS RELAPSE IN OUR INFLATION FIGURES IS CERTAINLY DISAPPOINTING, BUT WE ARE STILL ON TARGET FOR OUR 9.5% FORECAST OF THE AVERAGE ANNUAL RATE OF INFLATION FOR THE WHOLE YEAR.

"WE MUST NOT BE TOO DISPIRITED BY ONE MONTH'S FIGURES, AND THE ISSUE OF INFLATION MUST ALSO BE SEEN IN THE CONTEXT OF OUR CONTINUED STRONG ECONOMIC GROWTH WHICH WAS UNDERLINED BY THE GOOD TRADE FIGURES RELEASED YESTERDAY.

"COMPARED WITH MUCH OF THE REST OF THE WORLD, WE HAVE A WELL-BALANCED AND PROSPEROUS ECONOMY WITH FULL EMPLOYMENT AND STRONG ECONOMIC GROWTH," MR MACLEOD SAID.

"OUR EFFORTS AGAINST INFLATION WILL OF COURSE CONTINUE," MR MACLEOD ADDED.

"THE GOVERNOR ANNOUNCED A MIDDLE INCOME HOUSING SCHEME IN HIS LEGISLATIVE COUNCIL ADDRESS, WHICH WILL HELP PROTECT THE MIDDLE CLASS AGAINST THE IMPACT OF PROPERTY PRICE INCREASES, AND THERE ARE ALSO SIGNS THAT SPECULATION ON DOMESTIC PROPERTY HAS EASED.

"LAST MONTH'S RELAPSE SHOULD BE SEEN AGAINST THIS MORE HOPEFUL BACKGROUND," HE SAID.

GOVERNMENT STUDIES SHOW THAT THE UNUSUALLY SHARP RISES IN VEGETABLE PRICES, TOGETHER WITH INCREASES IN SOME PUBLIC HOUSING RENTS, WERE THE MAIN FACTORS CONTRIBUTING TO UPWARD MOVEMENTS LAST MONTH (SEPTEMBER) IN YEAR-ON-YEAR CONSUMER PRICE INDICES.

CONSUMER PRICE INDICES RELEASED TODAY SHOW THAT THE CPI(A) IN SEPTEMBER WAS 9.9% HIGHER THAN A YEAR EARLIER. CORRESPONDING YEAR-ON-YEAR INCREASES WERE 8.3% IN AUGUST, 8.8% IN JULY AND 9.3% IN JUNE.

THE GOVERNMENT ECONOMIST, MR K Y TANG, SAID: "TAKING THE FIRST NINE MONTHS OF 1992 TOGETHER, THE AVERAGE YEAR-ON-YEAR INCREASE IN THE CPI(A) WAS 9.4%, WHICH IS CLOSE TO OUR FORECAST OF AN AVERAGE OF 9.5% FOR THE WHOLE OF THIS YEAR.

"THE CPI FIGURES FOR SEPTEMBER, COMPARED WITH THE SAME MONTH LAST YEAR, HAVE BEEN HEAVILY DISTORTED BY FACTORS AFFECTING THE DEMAND, SUPPLY, AND HENCE THE PRICES OF VEGETABLES.

/"BASIC FOODSTUFFS

"BASIC FOODSTUFFS HAVE A HEAVY WEIGHTING IN THE CPI(A), AND WE ESTIMATE THAT VEGETABLE PRICES ACCOUNT FOR NEARLY 1 PERCENTAGE POINT OF THE 1.6 PERCENTAGE POINT DIFFERENCE BETWEEN THE YEAR-ON-YEAR INFLATION RATES OF 9.9% IN SEPTEMBER AND 8.3% IN AUGUST.

"NOW HOWEVER VEGETABLE PRICES HAVE FALLEN THIS MONTH AND, ALTHOUGH IT IS TOO EARLY TO PRODUCE FIRM ESTIMATES, WE EXPECT THIS MONTH'S INFLATION RATE TO BE LOWER," HE SAID.

MR TANG EXPLAINED THAT VEGETABLE PRICES ROSE SHARPLY LAST MONTH BECAUSE STRONG DEMAND FOR THE MID-AUTUMN FESTIVAL COINCIDED WITH REDUCED SUPPLIES.

MOREOVER, THE SIZE OF THE INCREASE WAS DISTORTED IN COMPARISON WITH SEPTEMBER LAST YEAR WHEN PRICES WERE UNUSUALLY LOW FOR THE TIME OF YEAR: THEY HAD JUST DROPPED SHARPLY FROM THE HIGH PRICES IN AUGUST, CAUSED BY SEVERE FLOODING IN CHINA, HE ADDED.

"NORMALLY VEGETABLE PRICES TEND TO PEAK IN SEPTEMBER, SO YEAR ON YEAR WE CAN COMPARE LIKE WITH LIKE," MR TANG SAID.

"THIS YEAR OUR SEPTEMBER INFLATION FIGURE IS DISTORTED BECAUSE WE ARE COMPARING THIS YEAR'S PEAK VEGETABLE PRICES WITH A POST-PEAK FALL LAST YEAR," HE SAID.

EXPLAINING THE OTHER MAIN FACTOR AFFECTING THE INDICES, MR TANG SAID: "INCREASES IN SOME PUBLIC HOUSING RENTS LAST MONTH ADD ANOTHER 0.3% OF A PERCENTAGE POINT TO THE INCREASE IN THE CPI(A)."

THERE WAS LITTLE CHANGE BETWEEN AUGUST AND SEPTEMBER FOR OTHER CPI(A) COMPONENTS SUCH AS RESTAURANT MEALS, FUEL AND LIGHT, ALCOHOLIC DRINKS AND TOBACCO, CLOTHING AND FOOTWEAR, DURABLE GOODS, AND TRANSPORT AND SERVICES.

"THUS IT IS CLEAR THAT THE RELAPSE LAST MONTH WAS CONCENTRATED IN A FEW ITEMS AND WAS NOT WIDESPREAD," MR TANG SAID.

MR TANG ADDED THAT THE RELAPSE WAS LESS EVIDENT IN THE OTHER TWO PRICE INDICES - CPI(B) AND HANG SENG CPI - WHICH GIVE A LOWER WEIGHTING TO BASIC FOODSTUFFS AND RENTS.

THE YEAR-ON-YEAR INCREASE WAS 10.2% IN THE CPI(B), COMPARED WITH 9.1% IN AUGUST. IN THE HANG SENG CPI IT WAS ALSO 10.2%, COMPARED WITH 9.8% IN AUGUST.

TUESDAY, OCTOBER 27, 1992

- 9 -

GOVERNOR CONGRATULATES PARALYMPIC ATHLETES

* * * * *

THE GOVERNOR, THE RT HON CHRISTOPHER PATTEN, TONIGHT (TUESDAY) HOSTED A RECEPTION IN THE GOVERNMENT HOUSE FOR THE HONG KONG DELEGATION TO THE NINTH PARALYMPIC GAMES HELD IN BARCELONA IN SEPTEMBER.

ACCOMPANIED BY THE SECRETARY FOR RECREATION AND CULTURE, MR JAMES SO, THE GOVERNOR GREETED EACH OF THE PARALYMPIC ATHLETES WHO HAD DISPLAYED AN EXTRAORDINARY PERFORMANCE IN BARCELONA.

THEY WON THREE GOLD, FOUR SILVER AND FOUR BRONZE MEDALS IN TABLE-TENNIS, FENCING AND ATHLETIC EVENTS.

THIS IS THE HIGHEST ACHIEVEMENT IN SPORTS MADE BY HONG KONG DISABLED ATHLETES.

OTHER GUESTS ATTENDING THE RECEPTION INCLUDED MEMBERS AND OFFICIALS OF THE HONG KONG SPORTS ASSOCIATION FOR THE PHYSICALLY DISABLED, THE HONG KONG SPORTS INSTITUTE BOARD AND THE SPORTS DEVELOPMENT BOARD.

- - - - 0 - - - -

NEW DIRECTOR OF LEGAL AID APPOINTED

* * * * *

THE GOVERNMENT ANNOUNCED TODAY (TUESDAY) THAT LADY PAULINE CHEUNG CHENG PO-LIN HAS BEEN APPOINTED TO SUCCEED MR PATRICK MOSS AS DIRECTOR OF LEGAL AID WITH EFFECT FROM NOVEMBER 16 THIS YEAR.

MR MOSS WILL PROCEED ON LEAVE ON THAT DATE ON COMPLETION OF HIS SERVICE WITH THE GOVERNMENT.

LADY CHEUNG, AGED 56, IS AT PRESENT THE DEPUTY DIRECTOR OF LEGAL AID RESPONSIBLE FOR POLICY, ADMINISTRATION AND LEGAL SUPPORT SERVICES.

SHE WAS FIRST APPOINTED IN 1968 TO THE POST OF ASSISTANT REGISTRAR, SUPREME COURT (LEGAL AID), AND PROMOTED TO HER PRESENT RANK IN NOVEMBER 1984.

LADY CHEUNG HAS ACTED AS DIRECTOR OF LEGAL AID ON SEVERAL OCCASIONS.

- - - - 0 - - - -

TUESDAY, OCTOBER 27, 1992

- 10 -

SEVEN MORE HIV INFECTED CASES CONFIRMED

* * * * *

SEVEN MORE PERSONS INCLUDING A WOMAN WERE FOUND TO BE POSITIVE FOR THE HIV ANTIBODY TEST LAST MONTH (SEPTEMBER), BRINGING THE NUMBER OF HIV INFECTED PERSONS IN HONG KONG TO 317.

REVIEWING THE LATEST AIDS SITUATION AT A MONTHLY MEDIA MEETING THIS (TUESDAY) AFTERNOON, THE DEPARTMENT OF HEALTH'S CONSULTANT PHYSICIAN (SPECIAL PREVENTIVE PROGRAMME), DR S S LEE, SAID ONE OF THE NEW HIV INFECTED BATCH HAD ALSO BEEN CONFIRMED AS AIDS PATIENT DURING THE MONTH.

IN ADDITION, ONE PERSON WHO HAD RECENTLY BEEN HIV INFECTED DIED IN THE SAME MONTH.

THIS BRINGS TO 69 CONFIRMED AIDS CASES WITH 44 DEATHS. THE 25 OTHERS ARE EITHER UNDER COUNSELLING AND TREATMENT OR HAVE LEFT THE TERRITORY.

OF THE 317 HIV INFECTED, 61 WERE HAEMOPHILIACS, 217 ACQUIRED THE INFECTION SEXUALLY, SIX WERE DRUG ABUSERS, AND THREE ACQUIRED THE INFECTION THROUGH BLOOD TRANSFUSION BEFORE 1985 WHEN HIV ANTIBODY TEST WAS NOT AVAILABLE.

FOR THE REMAINING 30, THE INFORMATION AVAILABLE WAS INADEQUATE FOR CLASSIFICATION.

UNDER THE HIV SURVEILLANCE PROGRAMME WHICH STARTED IN 1985, A TOTAL OF 248,901 BLOOD SPECIMENS HAVE BEEN TESTED FOR THE HIV ANTIBODY.

THE HONG KONG RED CROSS BLOOD TRANSFUSION SERVICE HAS ALSO SCREENED ALL BLOOD DONORS FOR AIDS.

UP TO LAST MONTH, 1,140,474 UNITS OF BLOOD HAD BEEN TESTED AND 26 DONORS WERE FOUND POSITIVE.

TURNING TO THE TELEPHONE COUNSELLING SERVICE (780 2211) BEING PROVIDED BY THE AIDS COUNSELLING AND HEALTH EDUCATION SERVICE SINCE NOVEMBER 1985, DR LEE SAID IT PLAYED A SIGNIFICANT ROLE IN PROMOTING AIDS EDUCATION.

MANNED BY EXPERIENCED NURSE-COUNSELLORS, MORE THAN 90,000 CALLS HAVE SO FAR BEEN MADE TO THE SERVICE WITH AN AVERAGE OF SOME 1,000 CALLS FOR EACH MONTH.

"THE NUMBER OF CALLS RECEIVED SO FAR THIS YEAR HAS SHOWN A STEADY INCREASE COMPARED WITH THAT OF THE PAST THREE YEARS," HE ADDED.

- - - - -

愛滋病毒抗體檢驗
 AIDS Virus (HIV) Antibody Testing
 病毒組 衛生署
 Virus Unit, Department of Health

	Apr 85-Aug 92		Sep 92		Total	
	No. tested*	No. +ve	No. tested*	No. +ve	No. tested*	No. +ve
經由政府診所及公立醫院轉介 Referrals from Public hospitals and clinics	31620	131	474	5	32094	136
經由私家醫生轉介 Referrals from private practitioners	1929	62	12	2	1941	64
衛生局衛生科求診人次 Attendances at social hygiene clinics	203060	54	2565	0	205625	54
血友病患者 Haemophiliacs	629	61	2	0	631	61
使用靜脈注射毒品者 IV drug users	6959	1	76	0	7035	1
由家庭計劃指導者轉介 Referrals from Family Planning Association	243	0	0	0	243	0
健康護理人員 Health care personnel	1295	0	37	0	1332	0
總數 TOTAL	245735	309	3166	7	248901	316

此乃驗血樣本數字, 並非人數, 因某些人士的檢驗是重複的。

* This indicates the number of specimens and not persons as tests are repeated for certain individuals.

	Aug 85-Aug 92		Sep 92		Total	
	No. tested	No. +ve	No. tested	No. +ve	No. tested	No. +ve
香港紅十字會輸血服務 Hong Kong Red Cross Blood transfusion Service	1125709	26	14765	0	1140474	26

Department of Health
October 1992

TUESDAY, OCTOBER 27, 1992

- 12 -

DOWN'S SYNDROME BOY OFFERED ADOPTIVE HOME IN U.S.

* * * * *

LITTLE AH-CHI TURNED A NEW PAGE IN HIS LIFE TODAY (TUESDAY) WHEN HIS PROSPECTIVE ADOPTIVE PARENTS CAME TO MEET HIM FROM THEIR DISTANT HOMETOWN IN THE UNITED STATES.

THE FOUR-YEAR-OLD BOY WAS FOUND SUFFERING FROM DOWN'S SYNDROME AT BIRTH. HE WAS THEN MADE A WARD OF THE DIRECTOR OF SOCIAL WELFARE.

AT A PARTY TO BID FAREWELL TO AH-CHI THIS AFTERNOON, CHIEF SOCIAL WORK OFFICER (FAMILY AND CHILD CARE SERVICES) OF THE SOCIAL WELFARE DEPARTMENT, MRS KATHERINE SHIN YEUNG KWAN-MAN, SAID HE WOULD BENEFIT UNDER THE CONSISTENT LOVE, CARE AND NURTURE OF AN ADOPTIVE FAMILY.

"HIS PROSPECTIVE ADOPTIVE PARENTS THE BRANDTS ARE CHILD-LOVING. BOTH BEING FAMILY PHYSICIANS, THEY ARE WELL AWARE OF THE SPECIAL NEEDS OF A DOWN'S SYNDROME CHILD," SHE SAID.

THE ADOPTIVE MOTHER SAID SHE WOULD TAKE AN EXTENDED LEAVE FROM WORK WHEN AH-CHI ARRIVED HOME, ADDING THAT SHE HAD ALSO PLANNED TO REDUCE HER WORKING HOURS TO GIVE BETTER CARE TO AH-CHI AND HER OTHER CHILDREN.

WHEN AH-CHI WAS A FEW MONTHS OLD, HIS NATURAL PARENTS RELINQUISHED THEIR RIGHTS AND HE WAS PUT UNDER THE CARE OF THE SOCIAL WELFARE DEPARTMENT.

THE ADOPTION UNIT OF THE DEPARTMENT LATER BEGAN LOOKING FOR PROSPECTIVE ADOPTERS FOR AH-CHI BOTH LOCALLY AND OVERSEAS.

AT THE AGE OF TWO, THE CHILD WAS TRANSFERRED TO THE WEE CARE CENTRE OF "MOTHER'S CHOICE" WHERE HE WAS BROUGHT UP IN A FAMILY-LIKE SETTING.

THE VISION BEHIND THE WEE CARE CENTRE IS TO SERVE CHILDREN AWAITING REUNION WITH THEIR BIOLOGICAL FAMILY OR ADOPTION PLACEMENT.

ITS MAIN OBJECTIVE IS TO PROVIDE A HOME-LIKE ENVIRONMENT THAT GIVES EACH CHILD PERSONALISED CARE TO MEET HIS OR HER INDIVIDUAL EMOTIONAL AND PHYSICAL NEEDS. AH-CHI, FOR EXAMPLE, MADE SIGNIFICANT PROGRESS UNDER THE CENTRE'S CARE.

EARLY THIS YEAR THE AMERICAN COUPLE SHOWED INTEREST IN ADOPTING AH-CHI. AFTER A THOROUGH HOME STUDY INVESTIGATION, THE FAMILY HAS BEEN FOUND TO BE SUITABLE IN EVERY WAY FOR BRINGING UP THE CHILD.

THEIR APPLICATION WAS THEN RECOMMENDED TO THE SOCIAL WELFARE DEPARTMENT IN HONG KONG THROUGH THE INTERNATIONAL SOCIAL SERVICE. PLACEMENT WAS LATER APPROVED.

/AH-CHI WOULD

AH-CHI WOULD HAVE TO STAY WITH BRANDT FAMILY FOR A PERIOD BEFORE AN ADOPTION ORDER COULD BE GRANTED BY THE COURT. THIS HELPS TO ENSURE THAT HE IS WELL SETTLED WITH THE FAMILY, AND THAT ADOPTION WOULD BE IN HIS BEST INTERESTS.

MRS SHIN SAID CHILDREN WITH SPECIAL NEEDS IN HONG KONG GENERALLY DID NOT RECEIVE PROPER ATTENTION.

RARELY WOULD ADOPTIVE PARENTS EXPRESS A WISH TO TAKE CHILDREN WITH SPECIAL NEEDS, SHE SAID, ADDING THAT MANY OF THEM HAD TO STAY INDEFINITELY IN INSTITUTIONS.

"THUS ADOPTIONS OF SPECIAL NEEDS CHILDREN FROM HONG KONG MOSTLY HAVE HAD TO BE ARRANGED OVERSEAS," SHE NOTED.

THE ADOPTION UNIT GENERALLY KEEPS A CLOSE LIAISON WITH VOLUNTARY AGENCIES LIKE THE INTERNATIONAL SOCIAL SERVICE ON ARRANGEMENTS OF ADOPTION OF LOCAL CHILDREN BY OVERSEAS FAMILIES.

THE LATTER SERVES AS A MEDIUM FOR RECOMMENDING SUITABLE FAMILIES TO THE FORMER, AND ARRANGES ESCORT OF THE CHILD TO JOIN THE PROSPECTIVE ADOPTERS.

MRS SHIN SAID "SPECIAL NEEDS" CHILDREN WITHOUT PARENTS WERE DOUBLY VULNERABLE. RECENTLY THE DEPARTMENT HAD NOTED THAT MORE ADOPTIVE PARENTS IN HONG KONG WERE WILLING TO CONSIDER TAKING THESE CHILDREN.

"NEVERTHELESS, AT PRESENT WE STILL HAVE 23 'SPECIAL NEEDS' CHILDREN AND ONE OTHER NORMAL AND HEALTHY CHILD AWAITING FOR ADOPTION," SHE SAID.

SHE URGED COUPLES WHO WERE INTERESTED TO BECOME PROSPECTIVE ADOPTERS TO CALL ON THE ADOPTION UNIT OF THE SOCIAL WELFARE DEPARTMENT.

ENQUIRIES CAN BE MADE ON 852 3107.

- - - - 0 - - - -

UNIFIED SALARY SCALE FOR HOME HELPERS

* * * * *

THE SOCIAL WELFARE DEPARTMENT CONSIDERED THAT A UNIFIED SALARY SCALE FOR HOME HELPERS SHOULD BE INTRODUCED SUBJECT TO THE AVAILABILITY OF FUNDS, IN ACCORDANCE WITH THE RECOMMENDATION OF THE SOCIAL WELFARE ADVISORY COMMITTEE.

A SPOKESMAN FOR THE DEPARTMENT CONFIRMED THAT THE DEPARTMENT HAD ALREADY PUT IN A BID FOR FUNDS ALLOCATION IN 1993/94 FOR THE PURPOSE.

"WE HOPE TO IMPLEMENT THE NEW SALARY SCALE FOR HOME HELPERS NEXT FINANCIAL YEAR," HE SAID.

- 14 -

HOME HELP SERVICE HELPS INDIVIDUALS AND FAMILIES WHO ARE NOT CAPABLE OF LOOKING AFTER THEMSELVES OR MAINTAINING THE NORMAL FUNCTIONING OF THEIR HOUSEHOLDS.

THERE ARE 15 NON-GOVERNMENTAL WELFARE ORGANISATIONS WITH A TOTAL OF 64 TEAMS PROVIDING HOME HELP SERVICE. ENQUIRIES CAN BE MADE ON THE DEPARTMENT'S HOTLINE 343 2255.

THE SPOKESMAN EXPLAINED THAT HOME HELP SERVICE CATERED FOR THREE MAJOR CLIENT GROUPS, NAMELY, THE ELDERLY, THE DISABLED AND FAMILIES WITH SOCIAL NEEDS.

"SERVICES CURRENTLY OFFERED BY HOME HELP TEAMS INCLUDE GENERAL PERSONAL CARE, MEAL SERVICE, ESCORT SERVICE, HOME MANAGEMENT, PURCHASE AND DELIVERY OF DAILY NECESSITIES, LAUNDRY SERVICE AND OTHER SERVICES," HE SAID.

"ONE OF THE OBJECTIVES IS TO SUPPORT AND STRENGTHEN A FAMILY TO PREVENT FAMILY DISRUPTION OR BREAKDOWN.

"IT ALSO AIMS TO PROVIDE A COMMUNITY CARE SERVICE TO INDIVIDUALS AND FAMILIES IN NEED," HE SAID.

SINCE LAST YEAR, THE HOME HELP SERVICE HAS BEEN EXTENDED TO SATURDAY AFTERNOONS, SUNDAYS, PUBLIC HOLIDAYS AND DURING TYPHOONS, HE ADDED.

- - - - 0 - - - -

VALUE ADDED DATA AND FAX SERVICES EXTENDED TO AUSTRALIA
* * * * *

VALUE ADDED DATA AND FACSIMILE SERVICES BETWEEN HONG KONG AND AUSTRALIA MAY NOW BE PROVIDED USING INTERNATIONAL PRIVATE LEASED CIRCUITS (IPLCS), A GOVERNMENT SPOKESMAN ANNOUNCED TODAY (TUESDAY).

THIS FOLLOWS DISCUSSIONS WITH TELECOMMUNICATIONS OFFICIALS OF THE DEPARTMENT OF TRANSPORT AND COMMUNICATIONS IN AUSTRALIA.

"THE SERVICES INVOLVED WILL BE PROVIDED ON IPLCS LEASED AT THE NORMAL FLAT RATES FROM HONG KONG TELECOM INTERNATIONAL LTD AT THE HONG KONG END AND FROM AUSTRALIAN INTERNATIONAL CARRIERS AT THE AUSTRALIAN END," THE SPOKESMAN SAID.

"WE HAVE MADE SIMILAR ARRANGEMENTS WITH THE UNITED STATES, THE UNITED KINGDOM AND JAPAN LAST YEAR, AND THE SCOPE OF SERVICES PERMITTED BETWEEN HONG KONG AND AUSTRALIA WILL BE EXACTLY THE SAME AS THOSE COVERED IN THE U.S., UK AND JAPAN ARRANGEMENTS," HE SAID.

ENQUIRIES ABOUT THE SCOPE OF SERVICES COVERED BY THE ARRANGEMENT AND THE LICENSING PROCEDURES APPLICABLE IN HONG KONG SHOULD BE DIRECTED TO THE TELECOMMUNICATIONS BRANCH, HONG KONG POST OFFICE, FIFTH FLOOR, SINCERE BUILDING, 173 DES VOEUX ROAD, CENTRAL, HONG KONG.

- - - - 0 - - - -

- 15 -

SURVEY ON TIMBER INDUSTRY PLANNED

* * * *

INDUSTRY DEPARTMENT OFFICIALS MET THIS (TUESDAY) MORNING WITH A LEGISLATIVE COUNCIL MEMBER, MR CHAN WAI-YIP, AND THE CHAIRMAN AND REPRESENTATIVES OF THE HONG KONG AND KOWLOON TIMBER MERCHANTS ASSOCIATION.

AT THE MEETING, THE INDUSTRY DEPARTMENT INFORMED THE ASSOCIATION REPRESENTATIVES THAT THE DEPARTMENT PLANNED TO CARRY OUT A QUESTIONNAIRE SURVEY TO GATHER MORE INFORMATION ABOUT THEIR INDUSTRY.

A SPOKESMAN FOR THE DEPARTMENT SAID THE SURVEY WOULD HELP THE DEPARTMENT ESTABLISH THE IMPORTANCE OF THEIR INDUSTRY TO HONG KONG.

"THE ASSOCIATION HAS ASSURED US OF THEIR FULL CO-OPERATION IN THE SURVEY," THE SPOKESMAN SAID.

"THE RESULTS OF THE SURVEY WILL ASSIST IN THE PLANNING OF FUTURE LAND USE BY GOVERNMENT," HE ADDED.

- - - - 0 - - - -

STUDY TOUR ON FISHERIES

* * * * *

A 17-MEMBER DELEGATION FROM LOCAL FISHING COMMUNITY WILL DEPART THIS THURSDAY (OCTOBER 29) FOR SINGAPORE AND NORTHEAST AUSTRALIA TO STUDY THEIR MODERN FISHING, PROCESSING TECHNOLOGY AND MARKETING SYSTEMS.

TO MARK THE DELEGATION'S DEPARTURE, THE DIRECTOR OF AGRICULTURE AND FISHERIES, DR LAWRENCE LEE, PRESENTED A BANNER TO A REPRESENTATIVE, MR CHENG FOR-YAU, AT A CEREMONY AT THE DEPARTMENT'S HEADQUARTERS TODAY (TUESDAY).

SPEAKING AT THE CEREMONY, DR LEE SAID THE AGRICULTURE AND FISHERIES DEPARTMENT AND THE FISH MARKETING ORGANISATION HAD ARRANGED 10 SIMILAR OVERSEAS STUDY TOURS TO OTHER PARTS OF THE WORLD SINCE 1981.

COUNTRIES VISITED BY PREVIOUS STUDY GROUPS INCLUDED THE UNITED KINGDOM, NORWAY, DENMARK, THE NETHERLANDS, GERMANY, AUSTRALIA, JAPAN, SOUTH KOREA, SINGAPORE, CHINA AND THE UNITED STATES.

DR LEE WAS PLEASED TO NOTE THAT RESPONSE TO EACH OF THESE TOURS HAD BEEN ENCOURAGING AND THAT THE VISITS DID BENEFIT THE TERRITORY'S FISHERIES DEVELOPMENT.

THIS YEAR, DR LEE SAID, THE 12-DAY TOUR TO SINGAPORE AND QUEENSLAND IN NORTHEAST AUSTRALIA HAS BEEN ARRANGED WITH THE HELP OF THE RESPECTIVE GOVERNMENT OFFICES IN HONG KONG.

TUESDAY, OCTOBER 27, 1992

- 16 -

THE GROUP WILL VISIT WHOLESAL FISH MARKETS, SEAFOOD PROCESSORS, FISHERMEN'S ORGANISATIONS AND GOVERNMENT INSTITUTES IN THESE TWO COUNTRIES.

IT WILL ALSO VISIT A LARGE-SCALE EXHIBITION - THE FISHASIA '92, IN SINGAPORE.

DR LEE HOPED THAT GROUP MEMBERS WOULD MAKE FULL USE OF THIS OPPORTUNITY TO GAIN UP-TO-DATE KNOWLEDGE AND SHARE THEIR EXPERIENCE WITH OTHER FISHERMEN TO FURTHER DEVELOP THE LOCAL FISHING INDUSTRY.

- - - - 0 - - - -

FRESH WATER CUT IN SAI KUNG

* * * * *

FRESH WATER SUPPLY TO SOME PREMISES IN SAI KUNG WILL GO OFF FROM 10 PM ON THURSDAY (OCTOBER 29) TO 6 AM THE FOLLOWING DAY TO FACILITATE CONNECTION WORK ON WATER MAINS.

THE SUSPENSION WILL AFFECT ALL PREMISES AT A SECTION OF CLEAR WATER BAY ROAD BETWEEN PIK UK AND SHAW'S STUDIO, INCLUDING PIK UK TSUEN, TA KU LING SAN TSUEN, AIR HOUSE, PIK SHUI SAN TSUEN, CHUK KOK TSUEN AND TAI PO TSAI TSUEN.

- - - - 0 - - - -

UNAUTHORISED BUILDING WORKS TO BE CLOSED

* * * * *

THE BUILDING AUTHORITY IS SEEKING TO CLOSE THE UNAUTHORISED BUILDING WORKS AT A BUILDING IN WAN CHAI SO THAT THEY CAN BE DEMOLISHED WITHOUT DANGER TO THE OCCUPANTS AND THE PUBLIC.

THE UNAUTHORISED WORKS ARE LOCATED ON FLAT A OF THE 14TH FLOOR AND THE ROOF OVER FLAT B OF THE 13TH FLOOR OF NO. 8-10 MORRISON HILL ROAD.

NOTICE OF INTENTION TO APPLY FOR A CLOSURE ORDER UNDER THE BUILDINGS ORDINANCE FROM THE HONG KONG DISTRICT COURT ON FEBRUARY 9, 1993, WAS POSTED ON THE PREMISES TODAY (TUESDAY).

DEMOLITION WORKS ARE EXPECTED TO START AS SOON AS THE CLOSURE ORDER IS ISSUED.

- - - - 0 - - - -

/17

TUESDAY, OCTOBER 27, 1992

- 17 -

198 VMS RETURNED TODAY

* * * * *

A GROUP OF 198 VIETNAMESE MIGRANTS TODAY (TUESDAY) RETURNED TO VIETNAM UNDER THE UNHCR'S VOLUNTARY REPATRIATION PROGRAMME.

COMPRISING 96 MEN, 41 WOMEN, 33 BOYS AND 28 GIRLS, THEY WERE THE 130TH BATCH TO GO BACK UNDER THE PROGRAMME.

THIS GROUP BROUGHT TO 9,918 THE TOTAL NUMBER OF VIETNAMESE MIGRANTS WHO HAVE RETURNED VOLUNTARILY THIS YEAR, AND TO 23,898 THE TOTAL NUMBER OF RETURNEES SINCE THE PROGRAMME STARTED IN MARCH 1989.

- - - - 0 - - - -

HONG KONG GOVERNMENT EXCHANGE FUND
TENDER RESULTS

* * * * *

TENDER DATE	27 OCT 92	27 OCT 92
PAPER ON OFFER	EF BILLS	EF BILLS
ISSUE NUMBER	Q244	H276
AMOUNT APPLIED	HKD 1,545 MN	HKD 780 MN
AMOUNT ALLOTTED	HKD 800 MN	HKD 300 MN
AVERAGE YIELD ACCEPTED	3.55 PCT	3.58 PCT
HIGHEST YIELD ACCEPTED	3.62 PCT	3.60 PCT
PRO RATA RATIO	ABOUT 50 PCT	ABOUT 53 PCT
AVERAGE TENDER YIELD	3.61 PCT	3.64 PCT

HONG KONG GOVERNMENT EXCHANGE FUND

TENDERS TO BE HELD IN THE WEEK BEGINNING 2 NOVEMBER 1992 --

TENDER DATE	3 NOV 92	3 NOV 92
PAPER ON OFFER	EF BILLS	EF BILLS
ISSUE NUMBER	Q245	Y296
ISSUE DATE	4 NOV 92	4 NOV 92
MATURITY DATE	3 FEB 93	3 NOV 93
TENOR	91 DAYS	364 DAYS
AMOUNT ON OFFER	HKD 800+160 MN	HKD 200+60 MN

- - - - 0 - - - -

TUESDAY, OCTOBER 27, 1992

- 18 -

HONG KONG GOVERNMENT EXCHANGE FUND
MONEY MARKET OPERATIONS
* * * * *

	\$ MILLION -----
OPENING BALANCE IN THE ACCOUNT	2,500
REVERASL OF LAF	-1,000
BALANCE AFTER REVERSAL OF LAF	1,500
NET INJECTION/WITHDRAWAL TODAY	NIL
EFFECT OF LAF TODAY	+500
CLOSING BALANCE IN THE ACCOUNT	2,000

LAF RATE 2.00 BID/4.00 OFFER TWI 111.8 *+0.3* 27.10.92

HONG KONG GOVERNMENT EXCHANGE FUND

EF BILLS			HONG KONG GOVERNMENT BONDS			
TERMS	YIELD	TERM	ISSUE	COUPON	PRICE	YIELD
1 WEEK	3.56 PCT	13 MONTHS	2311	6.25	102.16	4.19
1 MONTH	3.54 PCT	16 MONTHS	2402	5.50	101.26	4.54
3 MONTHS	3.56 PCT	19 MONTHS	2405	5.502	101.26	4.71
6 MONTHS	3.58 PCT	22 MONTHS	2408	4.375	99.30	4.84
12 MONTHS	4.17 PCT					

TOTAL TURNOVER OF BILLS AND BONDS - 11,328 MN

CLOSED 27 OCTOBER 1992

- - - - 0 - - - -