



# DAILY INFORMATION BULLETIN

ISSUED BY GOVERNMENT INFORMATION SERVICES  
BEACONSFIELD HOUSE, HONG KONG. TEL.: 842 8777

FRIDAY, OCTOBER 21, 1994

<u>CONTENTS</u>	<u>PAGE NO.</u>
FINAL REPORT ON CANOPY COLLAPSE OUT .....	1
REPORT OF WORKING GROUP ON CARE FOR ELDERLY RELEASED .....	3
HONG KONG DELEGATION ARRIVES IN ATLANTA .....	4
PUBLIC MORE WILLING TO MANAGE THEIR OWN AFFAIRS: RS .....	5
RESIDENTIAL MORTGAGE SURVEY RESULTS FOR SEPTEMBER 1994 .....	6
CONSUMER PRICE INDICES FOR SEPTEMBER 1994 .....	8
LICENCE FEES FOR EMPLOYMENT AGENCIES REVISED .....	14
TOWN PLANNING REGULATION GAZETTED .....	14
PORT FACILITIES FOR TSEUNG KWAN O .....	15
CAUSEWAY BAY ZONING PLAN AMENDED FOR LIBRARY DEVELOPMENT .....	16
DRAFT TIN SHUI WAI OUTLINE ZONING PLAN PUBLISHED .....	17
BOARD AMENDS TSEUNG KWAN O OUTLINE ZONING PLAN .....	18
LAND TO BE RESUMED FOR WATER WORKS AND VILLAGE IMPROVEMENT .....	19
DRAINAGE CHANNELS PLANNED FOR NGAU TAM MEI .....	20

/TENDER INVITED .....

19

CONTENTS

PAGE NO.

TENDERS INVITED FOR WEST KOWLOON RECLAMATION DRAINAGE WORKS .....	21
TENDERS INVITED FOR TWO SPORTS PROJECTS IN NEW TOWN .....	21
RECONSTRUCTION OF TAK WAH STREET PROPOSED .....	22
CONSTRUCTION OF LAM FUNG STREET .....	22
48 GURKHA INFANTRY BRIGADE TO DISBAND .....	23
YUEN LONG DISTRICT BOARD CHAIRMAN ELECTED .....	28
NO NOMINATION RECEIVED TODAY FOR REGCO BY-ELECTION .....	28
A COMPANY DIRECTOR FINED FOR MAKING INCORRECT TAX RETURNS .....	28
EX-CHINA VIETNAMESE ILLEGAL IMMIGRANTS RETURNED .....	29
BETTER AMBULANCE SERVICE .....	29
HONG KONG MONETARY AUTHORITY MONEY MARKET OPERATIONS ....	30

FINAL REPORT ON CANOPY COLLAPSE OUT

\* \* \* \* \*

THE BUILDINGS DEPARTMENT TODAY (FRIDAY) PUBLISHED THE FINAL REPORT OF ITS INVESTIGATION INTO THE COLLAPSE OF A CANOPY IN ABERDEEN ON AUGUST 1 THIS YEAR.

THE DIRECTOR OF BUILDINGS, MRS HELEN YU, POINTED OUT THAT THE REPORT CONTAINED NOT ONLY AN ANALYSIS OF THE CAUSES OF THE CANOPY COLLAPSE BUT ALSO RECOMMENDATIONS AND FOLLOW-UP ACTIONS THAT HAD BEEN OR WOULD BE TAKEN BY THE BUILDINGS DEPARTMENT.

SPEAKING ON THE CAUSES, SHE SAID THE INTERIM REPORT RELEASED IN MID-AUGUST HAD IDENTIFIED THE CAUSE OF THE COLLAPSE TO BE CORROSION OF STEEL REINFORCEMENT IN THE CANOPY. THE FINAL REPORT HAD ESTABLISHED THE CONTRIBUTING FACTORS TO BE:

- \* MISPLACEMENT OF STEEL BARS CAUSING STRESS BEYOND THEIR DESIGN LIMITS AND THE CANOPY TO CRACK AT ITS JUNCTION WITH THE MAIN BUILDING;
- \* ADDITIONAL SCREEDING OVER 21 YEARS INCREASING THE LOADING ON THE CANOPY AND AGGRAVATING THE CRACKING PROCESS;
- \* THE FISH-TANK CONSTRUCTION ALSO INCREASING THE LOADING LOCALLY ON THE CANOPY SLAB;
- \* RAINWATER, POSSIBLY ALSO SEA-WATER DRAINED FROM THE FISH-TANK, AND DIRT ENTERING THE CRACK BETWEEN THE CANOPY AND THE MAIN BUILDING CAUSING CORROSION OF THE STEEL REINFORCEMENT; AND
- \* THE ADDITIONAL SCREEDING, THE FISH-TANK AND AN UNAUTHORISED DOORWAY ONTO THE CANOPY RESULTING IN THE CANOPY BEING USED FOR PURPOSES FOR WHICH IT WAS NOT DESIGNED.

"HOWEVER, EVEN WITHOUT THE FISH-TANK CONSTRUCTION, THE SAFETY OF THE CANOPY SLAB HAD BEEN SIGNIFICANTLY REDUCED AS A RESULT OF THE MISPLACEMENT OF THE REINFORCING BARS, THE REDUCED THICKNESS OF THE CANOPY SLAB AND THE ADDITIONAL LOADING DUE TO THE WEIGHT OF SCREEDING," MRS YU STRESSED.

SHE SAID THE RECOMMENDATIONS IN THE FINAL REPORT INCLUDE:

- \* IMPROVEMENT TO ADMINISTRATIVE AND ENFORCEMENT PROCEDURES, INCLUDING THOSE RELATING TO RESTAURANT LICENCE APPLICATIONS;
- \* LEGISLATIVE REVIEW OF:
  - (I) REQUIREMENTS FOR SITE SUPERVISION;
  - (II) REQUIREMENTS AND PROCEDURES FOR REGISTRATION OF CONTRACTORS;

/(III) ADEQUACY OF .....

- (III) ADEQUACY OF OFFENCES AND PENALTIES; AND
- (IV) PRACTICABILITY OF A CERTIFICATION SCHEME TO REQUIRE BUILDING OWNERS TO HAVE THEIR PROPERTY REGULARLY INSPECTED BY AUTHORISED PROFESSIONALS;
- \* THE NEED FOR ADDITIONAL RESOURCES FOR BUILDINGS DEPARTMENT TO STRENGTHEN ITS CAPABILITY FOR MONITORING SITES WITH WORKS IN PROGRESS; AND
- \* A PROPOSAL FOR A CONDITION SURVEY OF BUILDINGS WITH CANTILEVERED STRUCTURES CONSTRUCTED BETWEEN 1959 AND 1980.

"WE ARE CONSULTING THE ATTORNEY GENERAL'S CHAMBERS TO DETERMINE WHAT ACTION MAY BE TAKEN AGAINST PERSONS WHO HAD CARRIED OUT WORKS IN CONTRAVENTION OF THE BUILDINGS ORDINANCE," MRS YU SAID.

THE BUILDINGS DEPARTMENT IS ALSO TAKING OTHER ACTIONS. THESE ARE MEASURES:

- \* TO CLEAR UNAUTHORISED BUILDING WORKS IN ALBERT HOUSE WHERE THE CANOPY COLLAPSE OCCURRED;
- \* TO SPECIFY FIRMER AND MORE STRINGENT REQUIREMENTS FOR THE DESIGN, CONSTRUCTION AND SITE SUPERVISION OF CONCRETE CANTILEVERED CANOPIES; AND
- \* TO STRENGTHEN PUBLIC EDUCATION EFFORTS TO ENHANCE BUILDING OWNERS' AWARENESS OF THEIR RESPONSIBILITIES AS REGARDS THE DANGERS OF CARRYING OUT UNAUTHORISED BUILDING WORKS AND THE NEED FOR PREVENTIVE MAINTENANCE OF THEIR PROPERTY, IN PARTICULAR CANOPIES AND BALCONIES.

"OWNERS OF PRIVATE PROPERTY HAVE A RESPONSIBILITY TO THEMSELVES, THEIR FAMILIES AND THEIR NEIGHBOURS TO ENSURE PREVENTIVE MAINTENANCE AND TIMELY REPAIRS," SHE STRESSED.

MRS YU ADDED THAT THE POLICE WERE CONDUCTING PARALLEL INVESTIGATION AS DEATH HAD RESULTED FROM THE COLLAPSE, AND FINDINGS IN THE FINAL REPORT WOULD FORM PART OF THE BASIS OF POLICE CONCLUSION AND RECOMMENDATION.

FRIDAY, OCTOBER 21, 1994

- 3 -

REPORT OF WORKING GROUP ON CARE FOR ELDERLY RELEASED  
\* \* \* \* \*

THE WORKING GROUP ON CARE FOR THE ELDERLY, WHICH WAS APPOINTED BY THE GOVERNOR, RELEASED ITS REPORT TODAY (FRIDAY).

THE WORKING GROUP, CHAIRED BY THE SECRETARY FOR HEALTH AND WELFARE, LISTED 71 RECOMMENDATIONS IN ITS REPORT TARGETED AT IMPROVING SERVICES AND BENEFITS FOR THE ELDERLY.

A GOVERNMENT SPOKESMAN POINTED OUT THAT IN THE POLICY COMMITMENTS RELEASED ON OCTOBER 5, THE SECRETARY FOR HEALTH AND WELFARE HAD COMMITTED TO IMPLEMENT THE WORKING GROUP'S RECOMMENDATIONS WHICH HAD THE FOLLOWING KEY OBJECTIVES:

- \* TO PROVIDE A NETWORK OF CARE FOR THE ELDERLY;
- \* TO ASSIST ELDERLY PERSONS TO LIVE IN THE COMMUNITY WITH DIGNITY FOR AS LONG AS POSSIBLE;
- \* TO PROVIDE A RANGE OF COMMUNITY SUPPORT SERVICES FOR ELDERLY PERSONS AND THEIR CARERS;
- \* TO PROVIDE A RANGE OF RESIDENTIAL CARE FOR THOSE ELDERLY PERSONS WHO CANNOT BE CARED FOR AT HOME.

THE SPOKESMAN OUTLINED THE MAJOR RECOMMENDATIONS OF THE REPORT AS FOLLOWS:

- \* TO ESTABLISH AN ELDERLY SERVICES DIVISION UNDER THE HEALTH AND WELFARE BRANCH TO CO-ORDINATE AND OVERSEE THE OVERALL POLICY ON CARING FOR ELDERLY PEOPLE;
- \* TO SET UP AN ELDERLY SERVICES DEVELOPMENT FUND OF \$200 MILLION TO PROVIDE GRANTS TO NON-GOVERNMENTAL ORGANISATIONS TO HELP THEM IMPLEMENT NON-PROFIT-MAKING SELF-FINANCING WELFARE PROJECTS FOR ELDERLY PEOPLE;
- \* TO IMPROVE SERVICES PROVIDED BY DAY CENTRES AND SOCIAL CENTRES;
- \* TO EXPAND HOME HELP SERVICES;
- \* TO CONDUCT A STUDY OF THE RESIDENTIAL CARE AND COMMUNITY SUPPORT NEEDS OF ELDERLY PEOPLE IN HONG KONG;
- \* TO MOBILISE ELDERLY PEOPLE TO BECOME VOLUNTEERS THEMSELVES, AND RECRUIT MORE VOLUNTEERS TO WORK IN ELDERLY SERVICES; AND
- \* TO FORM FOUR ADDITIONAL COMMUNITY GERIATRIC TEAMS AND FOUR ADDITIONAL PSYCHOGERIATRIC TEAMS.

THE WORKING GROUP HAS ALSO ENDORSED THE RECOMMENDATIONS OF THE AD HOC COMMITTEE ON HOUSING FOR THE ELDERLY.

/"WE INTEND .....

"WE INTEND TO IMPLEMENT ALL 71 RECOMMENDATIONS OF THE WORKING GROUP IN FULL BY 1998-99. IN RECURRENT TERMS, THIS WILL COST \$36.7 MILLION IN 1995-96 RISING TO \$141.7 MILLION IN 1999-2000. THE TOTAL ONE-OFF CAPITAL COST IS \$326.5 MILLION," THE SPOKESMAN SAID.

HE POINTED OUT THAT THERE HAD BEEN A CONSIDERABLE EXPANSION OF SERVICES FOR ELDERLY PEOPLE IN RECENT YEARS. "FOR 1994-95, THE GOVERNMENT WILL SPEND ABOUT \$7 BILLION ON SERVICES AND BENEFITS FOR ELDERLY PERSONS. THE WORKING GROUP PACKAGE WILL BE IN ADDITION TO THIS AMOUNT," HE SAID.

THE GOVERNOR, IN HIS POLICY ADDRESS TO THE LEGISLATIVE COUNCIL LAST YEAR, ANNOUNCED THE APPOINTMENT OF A WORKING GROUP ON CARE FOR THE ELDERLY TO CONDUCT A GENERAL REVIEW OF SERVICES FOR ELDERLY PEOPLE IN SOCIETY AND TO ADVISE ON THE FORMULATION OF A STRATEGY FOR THE DEVELOPMENT OF FUTURE POLICIES AND SERVICES.

IN NOVEMBER 1993, THE SECRETARY FOR HEALTH AND WELFARE WAS APPOINTED THE CHAIRMAN AND THE DIRECTOR OF SOCIAL WELFARE THE ALTERNATE CHAIRMAN.

MEMBERS INCLUDED MR Y F HUI, MR VINCENT CHENG, PROFESSOR NELSON CHOW, DR EDGAR CHENG, DR OWEN WONG, MR STEPHEN NG, DR E K YEOH AND REPRESENTATIVES FROM RELEVANT POLICY BRANCHES AND DEPARTMENTS.

THE REPORT HAS BEEN DISTRIBUTED TO MEMBERS OF THE LEGISLATIVE COUNCIL AND DISTRICT BOARDS AND INTERESTED PARTIES.

- - - - 0 - - - -

#### HONG KONG DELEGATION ARRIVES IN ATLANTA

\* \* \* \* \*

HONG KONG'S BIGGEST EVER PROMOTION IN THE UNITED STATES MOVED TO THE SOUTHERN CITY OF ATLANTA TODAY - THE FIRST TIME SUCH A LARGE SCALE EVENT FROM HONG KONG HAS BEEN STAGED IN THE CITY WHICH WILL BE HOSTING THE 1996 OLYMPIC GAMES.

ATLANTA IS ALSO THE FINAL STOP ON THE THREE-CITY PROMOTION SPEAR-HEADED BY THE CHIEF SECRETARY, MRS ANSON CHAN. SHE IS BEING ACCOMPANIED BY A DELEGATION OF HONG KONG'S BUSINESS LEADERS AND GOVERNMENT OFFICIALS.

EARLIER, MRS CHAN GAVE A KEYNOTE ADDRESS TO 500 MEMBERS OF THE BUSINESS COMMUNITY IN CHICAGO.

SPEAKING AS SOMEONE WHO INTENDS TO STAY AND HOPEFULLY PLAY A PART IN POST -1997 HONG KONG, MRS CHAN SET OUT TO DEMONSTRATE THAT IT WILL BE "BUSINESS AS USUAL" AFTER THE CHANGE OF SOVEREIGNTY.

SHE ALSO OUTLINED HONG KONG'S ADVANTAGES AS AN INTERNATIONAL FINANCIAL, TRADING AND MANUFACTURING CENTRE.

DURING A QUESTION AND ANSWER SESSION FOLLOWING THE LUNCHEON SPEECH, THE CHIEF SECRETARY WAS ASKED ABOUT HUMAN RIGHTS AND INDIVIDUAL FREEDOMS.

/SHE SAID: .....

- 5 -

SHE SAID: "WHAT WE WOULD LIKE TO ACHIEVE WITHIN THE ADMINISTRATION IS TO HAVE IN PLACE A DURABLE, PRACTICAL SET OF PROPOSALS THAT WILL ENSURE HUMAN RIGHTS CAN CONTINUE TO BE PROTECTED AND RESPECTED AFTER 1997."

SHE SAID THE GOVERNMENT WAS AWARE OF SENSITIVITIES OVER THE ISSUE. THERE WAS A NEED TO CONVINCE THE CHINESE THAT PART OF HONG KONG'S STRENGTH AND ECONOMIC GROWTH WERE A RESULT OF HONG KONG PEOPLE BEING ABLE TO ENJOY HUMAN RIGHTS AND INDIVIDUAL FREEDOMS,... "AND THAT IN THE INTEREST OF BOTH CHINA AND HONG KONG, IT IS CRUCIALLY IMPORTANT THAT THESE FREEDOMS ARE MAINTAINED".

MRS CHAN ALSO HAD A MEETING WITH THE LIEUTENANT GOVERNOR OF ILLINOIS, MR BOB KUSTRA, DURING WHICH THE BUSINESS LINKS BETWEEN HONG KONG AND CHICAGO, AND THE STATE IN GENERAL, WERE STRESSED.

DURING THE DELEGATION'S STOPOVER IN ATLANTA, THERE WILL BE A SEMINAR FOR THE BUSINESS COMMUNITY OF GEORGIA.

IN ADDITION, MRS CHAN WILL OFFICIALLY OPEN A SPECIAL HONG KONG SHOWCASE EXHIBITION FEATURING A PHOTOGRAPHIC DISPLAY OF EVERYDAY LIFE IN THE TERRITORY TOGETHER WITH DISPLAYS OF SOME OF THE MORE TRADITIONAL CHINESE COSTUMES, INCLUDING WEDDING GOWNS.

- - - - 0 - - - -

PUBLIC MORE WILLING TO MANAGE THEIR OWN AFFAIRS: RS

\* \* \* \* \*

THE RECENT DISTRICT BOARD ELECTIONS HAVE DEMONSTRATED THAT HONG KONG PEOPLE ARE WILLING TO PLAY A MORE ACTIVE PART IN MANAGING THEIR OWN AFFAIRS, THE REGIONAL SECRETARY FOR HONG KONG AND KOWLOON, MISS CHRISTINE CHOW, SAID TODAY (FRIDAY).

OFFICIATING AT A KAIFONG FESTIVAL, MISS CHOW SAID THE SUCCESS OF THE POLLS ALSO INDICATED THE PEOPLE'S CONFIDENCE THAT THEY COULD CHOOSE THEIR REPRESENTATIVES THROUGH AN OPEN AND FAIR ELECTION SYSTEM.

SHE SAID: "ALTHOUGH IN PERCENTAGE TERMS, THE VOTER TURNOUT RATE OF 33.1 PER CENT WAS ONLY SLIGHTLY HIGHER THAN THE PREVIOUS POLLS, THE ACTUAL NUMBER OF PEOPLE WHO HAD CAST THEIR BALLOTS REPRESENTED AN INCREASE OF 63.5 PER CENT OVER THAT RECORDED IN 1991."

ON THE ROLE OF KAIFONG ASSOCIATIONS IN HONG KONG'S POLITICAL DEVELOPMENT, MISS CHOW SAID THEY HAD PLAYED AN IMPORTANT ROLE IN ASSISTING THE PUBLIC TO GET TO KNOW THE VYING CANDIDATES.

THESE ASSOCIATIONS, SHE ADDED, ENCOURAGED VOTERS TO ACTIVELY VOTE ON ELECTION DAY.

SHE ALSO NOTED THAT THE NUMBER OF KAIFONG ASSOCIATIONS HAD CONTINUED TO GROW SINCE ITS INCEPTION 45 YEARS AGO AND STRESSED THAT THESE BODIES HAD BECOME AN ESSENTIAL PART OF THE TERRITORY'S COMMUNITY BUILDING PROGRAMME.

- - - - 0 - - - -

RESIDENTIAL MORTGAGE SURVEY RESULTS FOR SEPTEMBER 1994

\* \* \* \* \*

THE GROWTH IN RESIDENTIAL MORTGAGE LOANS FOR THE PURCHASE OF PROPERTIES IN HONG KONG REMAINED MODEST IN SEPTEMBER, ACCORDING TO THE LATEST MONTHLY SURVEY CONDUCTED BY THE HONG KONG MONETARY AUTHORITY (HKMA).

THE LATEST FIGURES SHOWED THAT THE TOTAL AMOUNT OF OUTSTANDING MORTGAGE LENDING BY THE 33 INSTITUTIONS IN THE SURVEY INCREASED BY 0.71 PER CENT IN SEPTEMBER (0.65 PER CENT IN AUGUST) TO \$241.6 BILLION FROM \$239.9 BILLION. THE GROWTH RATE IS BELOW THE MONTHLY AVERAGE OF 1.0 PER CENT OVER THE LAST 12 MONTHS.

"THE GROWTH RATE FOR SEPTEMBER IS IN LINE WITH OUR EXPECTATIONS," THE DEPUTY CHIEF EXECUTIVE (BANKING) OF HKMA, MR DAVID CARSE, SAID.

"GIVEN THE RAPID INCREASE IN MORTGAGE LENDING IN THE PAST, WE BELIEVE THAT THIS IS A HEALTHY TREND WHICH SHOULD NOT BE SEEN AS A SIGNAL TO RELAX CONTROL OVER SUCH LENDING."

THE ANNUALISED RATE OF GROWTH IN LENDING OVER THE LAST THREE MONTHS HAS FURTHER DROPPED TO 7.3 PER CENT, COMPARED WITH 11.9 PER CENT IN THE THREE-MONTH PERIOD TO AUGUST.

MOREOVER, THE 12-MONTH AVERAGE OF OUTSTANDING LOANS HAS FURTHER SLOWED TO AN ANNUALISED GROWTH RATE OF 12.5 PER CENT COMPARED WITH 13.4 PER CENT IN AUGUST.

NEW LOANS APPROVED BUT NOT YET DRAWN DECREASED SLIGHTLY BY \$0.1 BILLION OR 2.4 PER CENT TO \$4.0 BILLION IN SEPTEMBER.

"THESE FIGURES SUGGEST THAT THE GROWTH OF OUTSTANDING LOANS IN OCTOBER WILL CONTINUE TO BE MODEST," MR CARSE SAID.

LENDING FOR THE PURCHASE OF PROPERTIES IN CHINA ROSE BY \$115 MILLION (2.8 PER CENT) IN SEPTEMBER TO \$4.21 BILLION FROM \$4.09 BILLION, COMPARED WITH THE 0.3 PER CENT GROWTH IN AUGUST.

AS IN AUGUST, THE INCREASE WAS WHOLLY DUE TO LENDING FOR RESIDENTIAL PROPERTIES.

GROSS LOANS MADE IN SEPTEMBER INCREASED IN BOTH NUMBER (TO 431 FROM 251) AND AMOUNT (TO \$162 MILLION FROM \$104 MILLION).

HOWEVER, NEW LOANS APPROVED IN SEPTEMBER FELL IN BOTH NUMBER (TO 160 FROM 237) AND AMOUNT (TO \$87 MILLION FROM \$113 MILLION).

- - - - -

**Residential Mortgage Loans in Hong Kong**  
**Results of Survey for September 1994**

	<u>Sep</u> <u>1994</u> HK\$ Mn	<u>Aug</u> <u>1994</u> HK\$ Mn
<b><u>33 authorised institutions</u></b>		
<b>1. <u>Outstanding lending</u></b>		
a. Amount	241,589	239,885
b. Monthly change	0.71%	0.65%
c. Twelve-month change	12.6%	12.9%
d. Average change (annualized)		
Latest three months	7.3%	11.9%
Latest twelve months	12.5%	13.4%
<b>2. <u>Gross loans made during month</u></b>		
a. Amount	5,707	5,825
b. Number	4242	4587
<b>3. <u>New loans approved during month</u></b>		
a. Amount	6,083	6,388
b. Number	4373	4680
<b>4. <u>New loans approved during month but not yet drawn</u></b>		
a. Amount	4,030	4,127
b. Number	2853	2871

----- 0 -----

## CONSUMER PRICE INDICES FOR SEPTEMBER 1994

\* \* \* \* \*

CONSUMER PRICE INFLATION MODERATED IN SEPTEMBER AFTER A TEMPORARY UPSURGE IN JULY AND AUGUST.

THE CONSUMER PRICE INDEX (A) IN SEPTEMBER WAS 8.6% HIGHER THAN IN SEPTEMBER 1993, ACCORDING TO FIGURES RELEASED TODAY (FRIDAY) BY THE CENSUS AND STATISTICS DEPARTMENT. THIS REPRESENTED A SIGNIFICANT MODERATION FROM THE CORRESPONDING INCREASE OF 9.8% IN AUGUST.

COMMENTING ON THE CPI FIGURES, A GOVERNMENT SPOKESMAN POINTED OUT THAT "THE SLOWER INCREASE IN THE CPI(A) IN SEPTEMBER WAS MAINLY DUE TO A SIGNIFICANT MODERATION IN THE PRICES OF VEGETABLES.

"AFTER THE DISRUPTION IN JULY AND AUGUST CAUSED BY THE FLOODING IN SOUTH CHINA AND THE SEVERAL HEAVY RAINSTORMS IN HONG KONG, SUPPLY AND HENCE THE PRICES OF VEGETABLES RETURNED QUITE PROMPTLY TO A MORE NORMAL LEVEL IN SEPTEMBER," HE SAID.

THE PRICES OF VEGETABLES RECORDED AN AVERAGE INCREASE OF 10% IN SEPTEMBER 1994 WHEN COMPARED WITH SEPTEMBER 1993. THE CORRESPONDING INCREASE IN AUGUST WAS 62%.

"THE VOLATILE FOOD COMPONENT APART, THE PATTERN OF CONSUMER PRICE INFLATION IN SEPTEMBER REMAINED BROADLY SIMILAR TO THAT IN THE PREVIOUS FEW MONTHS.

"THOSE COMPONENTS IN THE CPI WHICH RECORDED RATHER RAPID PRICE INCREASES THEREBY CONTRIBUTING MUCH TO THE RELATIVE HIGH INFLATION RATE OVERALL, CONTINUED TO BE HOUSING RENTALS, VARIOUS CONSUMER SERVICES, TRANSPORT AND MORE RECENTLY ALSO CLOTHING," THE SPOKESMAN SAID.

"TAKING THE FIRST NINE MONTHS TOGETHER, THE INCREASE IN THE CPI(A) AVERAGED AT 8.0%. THIS WAS STILL LOWER THAN THE AVERAGE INCREASE OF 8.5% IN 1993 AND THE OFFICIAL FORECAST ALSO OF 8.5% FOR 1994 AS A WHOLE," HE ADDED.

THE YEAR-ON-YEAR RATES OF INCREASE IN THE CONSUMER PRICE INDEX (B) AND THE HANG SENG CPI ALSO MODERATED, TO 9.0% AND 10.2% RESPECTIVELY IN SEPTEMBER 1994. THIS COMPARED WITH THE CORRESPONDING INCREASES OF 9.5% AND 10.4% IN AUGUST 1994.

THE COMPOSITE CPI, WHICH IS COMPILED BASED ON THE COMBINED EXPENDITURE PATTERN OF HOUSEHOLDS COVERED BY THE THREE CPIS, SHOWED AN INCREASE OF 9.2% IN SEPTEMBER 1994 OVER THE SAME MONTH IN 1993. THIS WAS ALSO LOWER THAN THE CORRESPONDING INCREASE OF 9.8% IN AUGUST.

COMPARING SEPTEMBER THIS YEAR WITH THE SAME MONTH LAST YEAR, RELATIVELY SLOWER PRICE INCREASES THAN THE OVERALL AVERAGE WERE RECORDED FOR DURABLE GOODS (2.7% IN THE CPI(A) AND 2.9% IN THE CPI(B)); FUEL AND LIGHT (4.0% IN BOTH THE CPI(A) AND THE CPI(B)); ALCOHOLIC DRINKS AND TOBACCO (4.4% IN THE CPI(A) AND 5.4% IN THE CPI(B)); MISCELLANEOUS GOODS (5.9% AND 5.2%); FOOD (EXCLUDING MEALS BOUGHT AWAY FROM HOME) (7.0% AND 6.7%); AND MEALS BOUGHT AWAY FROM HOME (7.4% AND 7.3%).

ON THE OTHER HAND, RELATIVELY FASTER PRICE INCREASES THAN THE OVERALL AVERAGE WERE RECORDED FOR HOUSING (11.8% IN THE CPI(A) AND 12.7% IN THE CPI(B)); MISCELLANEOUS SERVICES (11.8% AND 10.8%); CLOTHING AND FOOTWEAR (10.6% AND 11.2%); AND TRANSPORT (9.4% AND 9.3%).

COMPARING SEPTEMBER 1994 WITH AUGUST 1994, THE CPI(A) AND CPI(B) INCREASED BY 0.5% AND 0.8% RESPECTIVELY.

IN THE THIRD QUARTER OF THIS YEAR, THE CPI(A) AND CPI(B) WERE, ON AVERAGE, HIGHER BY 8.9% AND 9.1% RESPECTIVELY THAN IN THE SAME QUARTER LAST YEAR.

FOR THE 12 MONTHS ENDED SEPTEMBER 1994, THE CPI(A) AND CPI(B) WERE, ON AVERAGE, HIGHER BY 8.2% AND 8.4% RESPECTIVELY THAN IN THE PRECEDING 12-MONTH PERIOD.

SEASONALLY ADJUSTED SERIES ARE ALSO AVAILABLE FOR THE CPIS. THE DESEASONALISED CPI(A) AND CPI(B) INCREASED AT AN AVERAGE RATE OF 0.8% AND 0.9% RESPECTIVELY PER MONTH DURING THE THREE MONTHS ENDED SEPTEMBER 1994.

MORE DETAILS ARE GIVEN IN THE "CONSUMER PRICE INDEX REPORT" FOR SEPTEMBER 1994, WHICH IS AVAILABLE AT \$16.5 A COPY FROM THE GOVERNMENT PUBLICATIONS CENTRE, GENERAL POST OFFICE BUILDING, GROUND FLOOR, CONNAUGHT PLACE, HONG KONG; OR FROM THE PUBLICATIONS SECTION OF THE CENSUS AND STATISTICS DEPARTMENT, 19TH FLOOR, WANCHAI TOWER, 12 HARBOUR ROAD, WAN CHAI, HONG KONG.

FOR LOCAL AND OVERSEAS MAILINGS, CONTACT SHOULD BE MADE WITH THE INFORMATION SERVICES DEPARTMENT, FRENCH MISSION BUILDING, 1 BATTERY PATH, HONG KONG.

FOR ENQUIRIES ABOUT THE INDICES, PLEASE TELEPHONE THE CONSUMER PRICE INDEX SECTION OF THE CENSUS AND STATISTICS DEPARTMENT ON 805 6403. DETAILS REGARDING THE HANG SENG CPI ARE CONTAINED IN THE HANG SENG CPI REPORT ISSUED BY THE ECONOMIC RESEARCH DEPARTMENT OF HANG SENG BANK LTD.

-----  
/Table 1 .....

Table 1 Consumer Price Indices and Rates of Increase for September 1994  
(Oct. 89 - Sep. 90 = 100)

Component	CPI (A)		CPI (B)		Hang Seng CPI		Composite CPI	
	Index for Sept. 94	% change over Sept. 93	Index for Sept. 94	% change over Sept. 93	Index for Sept. 94	% change over Sept. 93	Index for Sept. 94	% change over Sept. 93
Food	144.6	+7.2	145.8	+7.0	147.7	+8.8	145.6	+7.4
Meals bought away from home	153.3	+7.4	153.1	+7.3	154.2	+10.1	153.4	+7.9
Food, excluding meals bought away from home	135.9	+7.0	135.6	+6.7	136.5	+6.3	135.9	+6.8
Housing	169.9	+11.8	171.5	+12.7	177.6	+15.4	172.9	+13.3
Fuel and light	125.8	+4.0	125.1	+4.0	125.3	+4.4	125.5	+4.1
Alcoholic drinks and tobacco	187.0	+4.4	177.8	+5.4	173.3	+5.6	181.8	+4.9
Clothing and footwear	140.1	+10.6	142.2	+11.2	143.2	+5.2	142.0	+8.9
Durable goods	112.9	+2.7	112.6	+2.9	118.1	+3.5	114.3	+3.0
Miscellaneous goods	131.6	+5.9	128.9	+5.2	127.5	+4.9	129.5	+5.4
Transport	150.2	+9.4	148.9	+9.3	148.2	+8.9	149.1	+9.2
Miscellaneous services	166.5	+11.8	160.3	+10.8	150.2	+9.5	159.2	+10.7
All items	150.3	+8.6	150.8	+9.0	153.4	+10.2	151.3	+9.2

Monthly consumer price indices are compiled on the basis of (a) expenditure patterns of relevant households and (b) prices collected currently in the month. The expenditure patterns underlying the 1989/90-based consumer price indices are based on those patterns derived from the 1989/90 Household Expenditure Survey. The CPI(A) is based on the expenditure pattern of about 50% of households in Hong Kong, which had an average monthly expenditure of \$2,500-\$9,999 in 1989/90 (equivalent to \$3,600-\$14,599 at 1994 prices). The CPI(B) is based on the expenditure pattern of the next 30% of households, which had an average monthly expenditure of \$10,000-\$17,499 in 1989/90 (\$14,600-\$25,999 at 1994 prices). The Hang Seng CPI is based on the expenditure pattern of the next 10% of households, which had an average monthly expenditure of \$17,500-\$37,499 in 1989/90 (\$26,000-\$55,999 at 1994 prices).

Whereas the CPI(A), CPI(B) and Hang Seng CPI are based on the expenditure patterns of groups of households with different magnitudes of household expenditure, the Composite CPI is compiled based on the expenditure pattern of all these households taken together. Thus, while the CPI(A), CPI(B) and Hang Seng CPI show the impact of consumer price changes on different groups of households, the Composite CPI shows the impact of consumer price changes on the household sector generally.

Table 2 Consumer Price Indices for January 1992 - September 1994  
(Oct. 89 - Sep. 90 = 100)

<u>Year/month</u>	<u>CPI(A)</u>	<u>CPI(B)</u>	<u>Hang Seng CPI</u>	<u>Composite CPI</u>
1992 January	119.7	119.3	119.4	119.5
February	121.8	121.2	121.0	121.4
March	122.5	121.9	121.8	122.1
April	124.0	123.4	122.9	123.5
May	124.0	123.8	124.2	124.0
June	125.3	125.1	125.2	125.2
July	125.5	125.4	125.4	125.4
August	125.6	125.9	125.8	125.8
September	128.3	127.9	127.5	128.0
October	128.4	128.4	128.6	128.5
November	128.5	129.0	129.9	129.0
December	129.3	129.8	130.0	129.7
1993 January	131.8	131.6	131.5	131.7
February	132.4	132.2	132.0	132.2
March	132.0	132.2	133.1	132.4
April	133.5	133.9	134.5	133.9
May	134.5	134.8	136.3	135.1
June	136.0	135.9	137.1	136.3
July	135.8	136.1	136.9	136.2
August	136.3	136.6	137.4	136.7
September	138.4	138.3	139.2	138.6
October	140.0	139.6	140.7	140.0
November	139.4	139.9	142.2	140.3
December	140.4	140.9	143.3	141.3
1994 January	140.0	140.7	143.4	141.1
February	142.7	142.9	144.9	143.3
March	142.5	143.0	145.3	143.4
April	143.8	144.8	147.9	145.2
May	145.0	146.1	150.0	146.7
June	146.2	146.9	151.0	147.7
July	147.3	147.9	150.5	148.3
August	149.6	149.6	151.7	150.1
September	150.3	150.8	153.4	151.3

Chart 1 Year-on-year Rates of Increase in CPI(A)

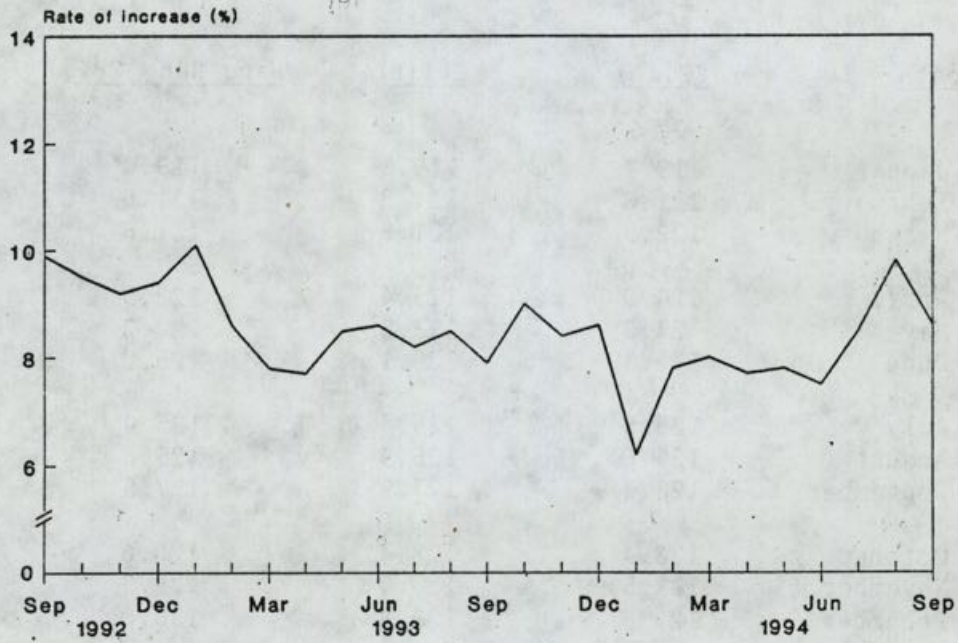
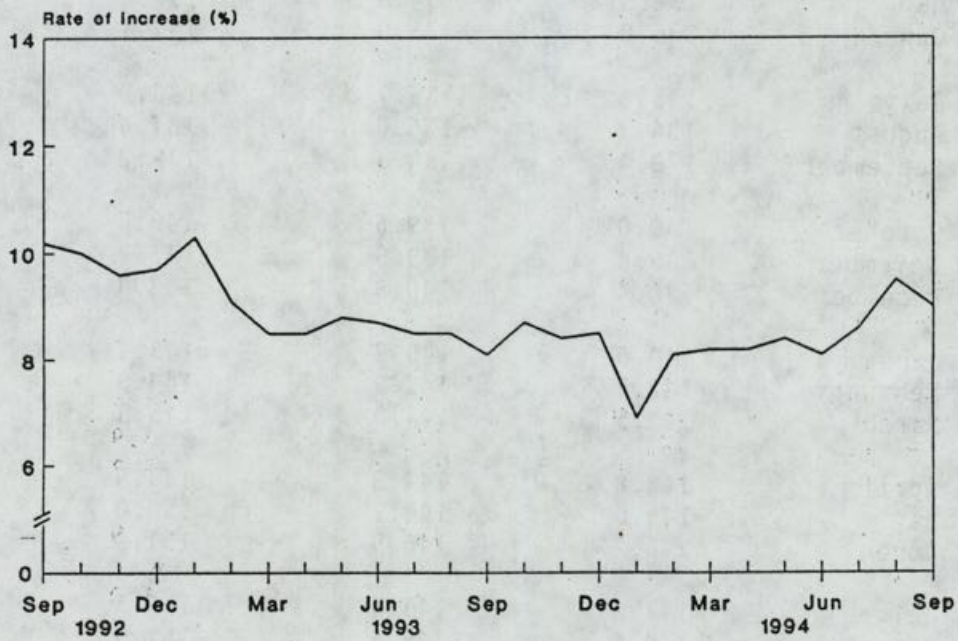


Chart 2 Year-on-year Rates of Increase in CPI(B)



/Chart 3 .....

Chart 3 Year-on-year Rates of Increase in Hang Seng CPI

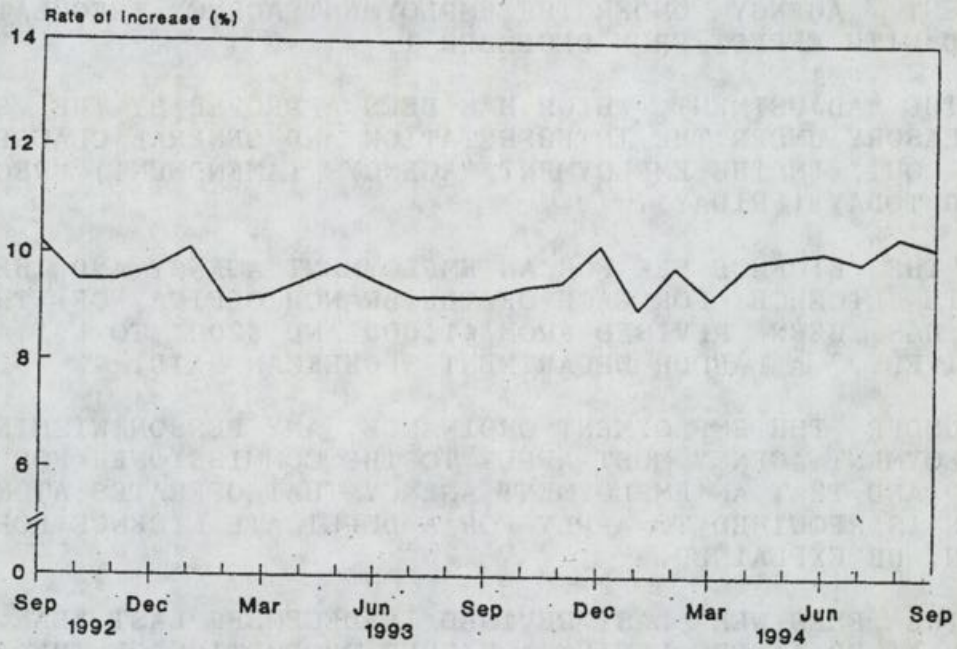
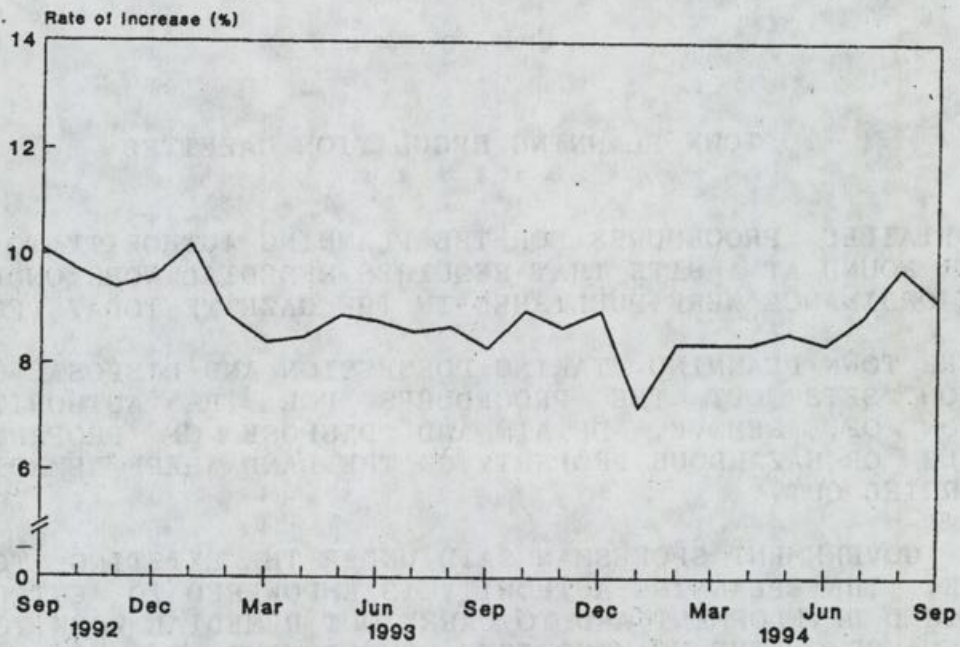


Chart 4 Year-on-year Rates of Increase in Composite CPI



LICENCE FEES FOR EMPLOYMENT AGENCIES REVISED

\* \* \* \* \*

THE FEE FOR THE ISSUE OR RENEWAL OF LICENCE FOR AN EMPLOYMENT AGENCY UNDER THE EMPLOYMENT AGENCY REGULATION WILL BE ADJUSTED WITH EFFECT FROM DECEMBER 1.

THE ADJUSTMENT, WHICH HAS BEEN APPROVED BY THE SECRETARY FOR THE TREASURY UNDER THE INTERPRETATION AND GENERAL CLAUSES ORDINANCE, IS SET OUT IN THE EMPLOYMENT AGENCY (AMENDMENT) REGULATION 1994 GAZETTED TODAY (FRIDAY).

"THE LICENCE FEE FOR AN EMPLOYMENT AGENCY AND THE FEE FOR THE DUPLICATE LICENCE FOR EACH OF THE BRANCH OFFICE OF THE EMPLOYMENT AGENCY HAS BEEN REVISED FROM \$1,000 AND \$200 TO \$1,400 AND \$280 RESPECTIVELY," A LABOUR DEPARTMENT SPOKESMAN SAID.

UNDER THE EMPLOYMENT ORDINANCE, ANY PERSON WISHING TO OPERATE AN EMPLOYMENT AGENCY MUST APPLY TO THE COMMISSIONER FOR LABOUR FOR A LICENCE AND THAT AN EMPLOYMENT AGENCY THAT OPERATES AT MORE THAN ONE LOCATION IS REQUIRED TO APPLY FOR A DUPLICATE LICENCE FOR EACH BRANCH LOCATION, HE EXPLAINED.

THE FEES WERE LAST REVISED IN DECEMBER LAST YEAR. THE PRESENT REVISION AIMED AT RECOVERING A HIGHER PROPORTION OF THE ADMINISTRATIVE COST INCURRED.

ENQUIRIES ABOUT THE LICENCE FEES MAY BE DIRECTED TO THE EMPLOYMENT AGENCY ADMINISTRATION OF THE LABOUR DEPARTMENT ON 852 3535 OR 852 3540.

- - - - 0 - - - -

TOWN PLANNING REGULATION GAZETTED

\* \* \* \* \*

DETAILED PROCEDURES FOR THE PLANNING AUTHORITY TO DISPOSE OF PROPERTY FOUND AT A SITE THAT REQUIRES REMEDIAL WORK UNDER THE TOWN PLANNING ORDINANCE WERE PUBLISHED IN THE GAZETTE TODAY (FRIDAY).

THE TOWN PLANNING (TAKING POSSESSION AND DISPOSAL OF PROPERTY) REGULATION SETS OUT THE PROCEDURES FOR THE AUTHORITY TO TAKE POSSESSION OF, REMOVE, DETAIN AND DISPOSE OF PROPERTY INCLUDING PERISHABLE OR HAZARDOUS PROPERTY ON THE LAND WHERE REMEDIAL WORK HAS TO BE CARRIED OUT.

A GOVERNMENT SPOKESMAN SAID UNDER THE EXISTING TOWN PLANNING ORDINANCE, THE PLANNING AUTHORITY IS EMPOWERED TO ENTER LAND WITH UNAUTHORISED DEVELOPMENT AND TO CARRY OUT REMEDIAL WORK TO ENSURE THE DISCONTINUANCE OF THE UNAUTHORISED DEVELOPMENT, TO PREVENT THE ADVERSE EFFECTS ASSOCIATED WITH SUCH DEVELOPMENT OR TO REINSTATE THE LAND.

"TO MAKE WAY FOR THE CARRYING OUT OF THE NECESSARY REMEDIAL WORK, THE PLANNING AUTHORITY MAY NEED TO REMOVE SUCH PROPERTIES AS SCRAP METAL AND ABANDONED VEHICLES REMAINING ON THE LAND," THE SPOKESMAN SAID.

FRIDAY, OCTOBER 21, 1994

- 15 -

THE REGULATION IS NOT INTENDED TO DEAL WITH IMMOVABLE PROPERTY SUCH AS BUILDING.

IT COVERS THE REQUIREMENTS FOR SERVING REMOVAL AND DISPOSAL NOTICES, INFORMATION TO BE CONTAINED IN THESE NOTICES, PROVISIONS FOR AN OWNER TO CLAIM BACK THE PROPERTY OR THE PROCEEDS OF SALE FROM THE AUTHORITY, AND THE DISPOSAL OF UNCLAIMED PROPERTY, HE SAID.

- - - - 0 - - - -

PORT FACILITIES FOR TSEUNG KWAN O

\* \* \* \* \*

THE GOVERNMENT WILL UNDERTAKE A RANGE OF RECLAMATION AND RELATED WORKS TO PROVIDE LAND AND PORT FACILITIES FOR DEEP WATERFRONT INDUSTRIES AND POTENTIALLY HAZARDOUS MATERIAL STORAGE FACILITIES.

IT WILL INVOLVE CONSTRUCTING SOME 2,400 METRES OF SEAWALL, 4,800 METRES OF ROADS AND 3,700 METRES OF BOX CULVERT, DREDGING AND RECLAIMING ABOUT 100 HECTARES OF LAND WITHIN AN AREA OF ABOUT 140 HECTARES OF FORESHORE AND SEA-BED AT AREA 137, TSEUNG KWAN O.

THE WORK WILL COMMENCE IN OCTOBER 1995 AND WILL BE COMPLETED BY ABOUT JUNE 2000.

THE EXTENT OF THE AREA AFFECTED IS GAZETTED TODAY (FRIDAY).

THE NOTICE AND ITS RELATED PLAN CAN BE SEEN AT THE LANDS DEPARTMENT'S SURVEY AND MAPPING OFFICE, 14TH FLOOR, MURRAY BUILDING, GARDEN ROAD, CENTRAL, HONG KONG AND AT THE SAI KUNG DISTRICT OFFICE, SECOND FLOOR, SAI KUNG GOVERNMENT OFFICES, 34 CHAN MAN STREET, SAI KUNG, NEW TERRITORIES.

ANY PERSON WHO BELIEVES THAT HIS INTEREST, RIGHT OR EASEMENT IN OR OVER THE FORESHORE AND SEA-BED INVOLVED WILL BE AFFECTED BY THE WORK MAY SUBMIT A WRITTEN CLAIM FOR COMPENSATION TO THE DIRECTOR OF LANDS ON OR BEFORE OCTOBER 21, 1995.

HE SHOULD STATE IN HIS SUBMISSION THE SUM OF MONEY HE IS WILLING TO ACCEPT IN FULL AND FINAL SETTLEMENT OF HIS CLAIM AND SHOULD SUBMIT SUCH PARTICULARS WHICH HE POSSESSES TO SUBSTANTIATE HIS CLAIM.

- - - - 0 - - - -

CAUSEWAY BAY ZONING PLAN AMENDED FOR LIBRARY DEVELOPMENT

\* \* \* \* \*

THE TOWN PLANNING BOARD TODAY (FRIDAY) ANNOUNCED AMENDMENTS TO THE APPROVED CAUSEWAY BAY OUTLINE ZONING PLAN (NO. S/H6/2).

THE MAJOR AMENDMENT IS TO REZONE A SITE ADJACENT TO THE CAUSEWAY BAY RECREATION GROUND NEAR MORETON TERRACE FROM 'OPEN SPACE' TO 'OTHER SPECIFIED USES' ANNOTATED 'LIBRARY' FOR THE DEVELOPMENT OF THE HONG KONG CENTRAL LIBRARY.

IT WILL BE A MAIN LIBRARY FOR THE URBAN COUNCIL'S LIBRARY NETWORK PROVIDING A FULL RANGE OF LIBRARY SERVICES FOR THE WHOLE TERRITORY.

MEANWHILE, SOME TECHNICAL AMENDMENTS TO THE NOTES OF THE PLAN HAVE ALSO BEEN MADE.

THE AMENDMENT PLAN (NO.S/H6/3) IS AVAILABLE FOR PUBLIC INSPECTION UNTIL DECEMBER 21 FROM:

- \* PLANNING DEPARTMENT,  
16TH FLOOR, MURRAY BUILDING,  
GARDEN ROAD, HONG KONG;
- \* HONG KONG DISTRICT PLANNING OFFICE,  
11TH FLOOR, LEIGHTON CENTRE,  
77 LEIGHTON ROAD, CAUSEWAY BAY,  
HONG KONG; AND
- \* WAN CHAI DISTRICT OFFICE,  
GROUND FLOOR, 2 O'BRIEN ROAD,  
WAN CHAI,  
HONG KONG.

ANY PERSON AFFECTED BY THE AMENDMENT PLAN MAY SUBMIT WRITTEN OBJECTIONS TO THE SECRETARY OF THE TOWN PLANNING BOARD, C/O PLANNING DEPARTMENT, 13TH FLOOR, MURRAY BUILDING, BEFORE DECEMBER 21.

COPIES OF THE AMENDMENT PLAN CAN BE BOUGHT AT THE SURVEY AND MAPPING OFFICE, LANDS DEPARTMENT, 14TH FLOOR, MURRAY BUILDING, AND THE KOWLOON MAP SALES OFFICE, 382 NATHAN ROAD, KOWLOON.

DRAFT TIN SHUI WAI OUTLINE ZONING PLAN PUBLISHED  
\* \* \* \* \*

THE TOWN PLANNING BOARD TODAY (FRIDAY) ANNOUNCED THE PUBLICATION OF THE DRAFT TIN SHUI WAI OUTLINE ZONING PLAN (OZP) (NO. S/TSW/1).

THE PLAN COVERS AN AREA OF ABOUT 345 HECTARES BOUNDED BY THE SITE OF SPECIAL SCIENTIFIC INTEREST AT INNER DEEP BAY TO THE EAST, MONG TSENG TSUEN TO THE NORTH, SHA KONG WAI TO THE WEST AS WELL AS KIU TAU WAI AND SHEUNG CHEUNG WAI TO THE SOUTH.

THE EXISTING DEVELOPMENT OF TIN SHUI WAI IS CONCENTRATED IN THE SOUTHERN PORTION WITH THE NORTHERN PORTION, KNOWN AS THE TIN SHUI WAI RESERVE ZONE, BEING HELD AS A LAND RESERVE FOR LONG-TERM STRATEGIC GROWTH.

THE SOUTHERN PORTION WILL ACCOMMODATE A POPULATION OF ABOUT 149,000 BY THE END OF 1997 WHILE THE RESERVE ZONE MAY ACCOMMODATE AN ADDITIONAL POPULATION OF UP TO 150,000 IN THE LONG TERM.

"PLANNING FOR THE RESERVE ZONE IS CURRENTLY BEING STUDIED BY CONSULTANTS. LAND USE PROPOSALS WILL ONLY BE FIRMED UP WHEN THE FINDINGS OF THE STUDY ARE AVAILABLE.

"THE TIN SHUI WAI OZP IS TO EXTEND STATUTORY LAND USE CONTROL TO THE TIN SHUI WAI NEW TOWN AND TO GUIDE DETAILED PLANNING AND DEVELOPMENT," A SPOKESMAN FOR THE TOWN PLANNING BOARD SAID.

ON THE PLAN, TWO SITES MEASURING ABOUT 2.8 HECTARES IN THE SOUTHERN PORTION OF TIN SHUI WAI HAVE BEEN ZONED FOR COMMERCIAL DEVELOPMENT WHICH IS INTENDED TO SERVE AS A TOWN CENTRE PROVIDING RETAILING AND COMMERCIAL FACILITIES.

ABOUT 58.6 HECTARES OF LAND HAVE BEEN ZONED "RESIDENTIAL (GROUP A)" FOR PUBLIC RENTAL HOUSING AND HOME OWNERSHIP SCHEME HOUSING DEVELOPMENT. ANOTHER 30.4 HECTARES HAVE ALSO BEEN ZONED "RESIDENTIAL (GROUP B)" FOR PRIVATE RESIDENTIAL DEVELOPMENT.

TO SERVE THE NEEDS OF THE LOCAL RESIDENTS, 18.7 HECTARES OF LAND HAVE BEEN RESERVED FOR "GOVERNMENT/INSTITUTION/COMMUNITY" USE. SOME 5.7 HECTARES HAVE ALSO BEEN ZONED "OTHER SPECIFIED USES" FOR USES SUCH AS TELEPHONE EXCHANGE, BUS DEPOT, SEWAGE PUMPING STATIONS, BUS TERMINUS AND LIGHT RAIL TRANSIT (LRT) TERMINUS.

MEANWHILE, ABOUT 22.5 HECTARES OF LAND HAVE BEEN ZONED "OPEN SPACE" TO PROVIDE FOR BOTH ACTIVE AND PASSIVE RECREATIONAL USES.

AN AREA OF 24.7 HECTARES HAS ALSO BEEN ZONED "GREEN BELT" TO SERVE AS A BUFFER BETWEEN THE RURAL AREAS OF LAU FAU SHAN AND FUTURE DEVELOPMENTS IN THE RESERVE ZONE.

SOME 171.8 HECTARES OF LAND WHICH INCLUDE A LARGE PART OF THE RESERVE ZONE AND THE LRT AND BUS TERMINUSES HAVE BEEN DESIGNATED FOR UNDETERMINED USES PENDING FURTHER FEASIBILITY STUDIES AND THE FINDINGS OF THE TERRITORIAL DEVELOPMENT STRATEGY REVIEW AND THE NORTH WEST NEW TERRITORIES DEVELOPMENT STRATEGY REVIEW.

FRIDAY, OCTOBER 21, 1994

- 18 -

THE DRAFT PLAN IS AVAILABLE FOR PUBLIC INSPECTION UNTIL DECEMBER 21 AT:

- \* PLANNING DEPARTMENT,  
16TH FLOOR, MURRAY BUILDING,  
GARDEN ROAD, HONG KONG;
- \* TUEN MUN AND YUEN LONG DISTRICT PLANNING OFFICE,  
LEVEL 11, METROPLAZA TOWER 1,  
223 HING FONG ROAD, KWAI FONG,  
THE NEW TERRITORIES; AND
- \* YUEN LONG DISTRICT OFFICE,  
GROUND FLOOR, YUEN LONG DISTRICT BRANCH OFFICES BUILDING,  
269 CASTLE PEAK ROAD, YUEN LONG,  
THE NEW TERRITORIES.

ANY PERSON AFFECTED BY THE DRAFT PLAN MAY SUBMIT WRITTEN OBJECTION TO THE SECRETARY OF THE TOWN PLANNING BOARD, C/O PLANNING DEPARTMENT, 13TH FLOOR, MURRAY BUILDING BEFORE DECEMBER 21.

COPIES OF THE DRAFT PLAN CAN BE BOUGHT AT THE SURVEY AND MAPPING OFFICE, LANDS DEPARTMENT, 14TH FLOOR, MURRAY BUILDING, AND THE KOWLOON MAP SALES OFFICE, 382 NATHAN ROAD, KOWLOON.

- - - - 0 - - - -

BOARD AMENDS TSEUNG KWAN O OUTLINE ZONING PLAN

\* \* \* \* \*

THE TOWN PLANNING BOARD TODAY (FRIDAY) ANNOUNCED AMENDMENTS TO THE DRAFT TSEUNG KWAN O OUTLINE ZONING PLAN (NO. S/TKO/2).

ONE OF THE AMENDMENTS IS TO REZONE PARTS OF AREAS 37 AND 44 FROM 'GOVERNMENT/INSTITUTION/COMMUNITY' (GIC) TO 'RESIDENTIAL (GROUP A)' (R(A)) FOR PRIVATE RESIDENTIAL DEVELOPMENT AND HOME OWNERSHIP SCHEME HOUSING DEVELOPMENT RESPECTIVELY.

MEANWHILE, A SITE TO THE SOUTH OF PO HONG ROAD IN AREA 13 HAS ALSO BEEN REZONED FROM 'OPEN SPACE' (O) TO 'R(A)' SO THAT IT CAN BE REDEVELOPED FOR SANDWICH CLASS HOUSING WITH ITS ADJOINING 'R(A)' SITE.

OTHER AMENDMENTS INCLUDE THE REZONING OF A SITE TO THE SOUTH OF PO HONG ROAD IN AREA 16 FROM 'GIC' TO 'OTHER SPECIFIED USES' ANNOTATED 'PETROL FILLING STATION', A SITE AT PO NING ROAD IN AREA 44 FROM 'O' TO 'GIC' FOR THE DEVELOPMENT OF AN INDOOR RECREATION CENTRE, AND A SITE AT THE JUNCTION OF ROAD P1 AND P2 IN AREA 40 FROM 'GIC' TO 'O' FOR INTEGRATING WITH THE 'O' SITE TO ITS NORTHWEST FOR A MORE COHERENT OPEN SPACE DEVELOPMENT.

/THE AMENDMENT .....

FRIDAY, OCTOBER 21, 1994

- 19 -

THE AMENDMENT PLAN (NO. S/TKO/3) IS AVAILABLE FOR PUBLIC INSPECTION UNTIL NOVEMBER 11 FROM:

- \* PLANNING DEPARTMENT,  
16TH FLOOR, MURRAY BUILDING,  
GARDEN ROAD, HONG KONG;
- \* SAI KUNG AND TSEUNG KWAN O DISTRICT PLANNING OFFICE,  
12TH FLOOR, CHINACHEM GOLDEN PLAZA,  
77 MODY ROAD, TSIM SHA TSUI EAST,  
KOWLOON; AND
- \* SAI KUNG DISTRICT OFFICE,  
GROUND FLOOR, SAI KUNG GOVERNMENT OFFICES BUILDING,  
34 CHAN MAN STREET, SAI KUNG,  
THE NEW TERRITORIES.

ANY PERSON AFFECTED BY THE AMENDMENT PLAN MAY SUBMIT WRITTEN OBJECTION TO THE SECRETARY OF THE TOWN PLANNING BOARD, C/O PLANNING DEPARTMENT, 13TH FLOOR, MURRAY BUILDING, BEFORE NOVEMBER 11.

COPIES OF THE AMENDMENT PLAN CAN BE BOUGHT AT THE SURVEY AND MAPPING OFFICE, LANDS DEPARTMENT, 14TH FLOOR, MURRAY BUILDING, AND THE KOWLOON MAP SALES OFFICE, 382 NATHAN ROAD, KOWLOON.

- - - - 0 - - - -

#### LAND TO BE RESUMED FOR WATER WORKS AND VILLAGE IMPROVEMENT

\* \* \* \* \*

THE GOVERNMENT IS TO RESUME 132 PRIVATE AGRICULTURAL LOTS ON LANTAU ISLAND FOR THE CONSTRUCTION OF WATER MAINS BETWEEN THE TUNG CHUNG SERVICE RESERVOIR AND TUNG CHUNG DEVELOPMENT PHASE I AREA.

LOCATED IN TUNG CHUNG, THE AGRICULTURAL LOTS COVER A TOTAL AREA OF ABOUT 21,655 SQUARE METRES.

THE CONSTRUCTION IS SCHEDULED TO START EARLY FEBRUARY NEXT YEAR AND WILL TAKE ABOUT 15 MONTHS TO COMPLETE.

MEANWHILE, THE GOVERNMENT WILL ALSO RESUME LAND IN TUEN MUN FOR THE EXPANSION AND IMPROVEMENT OF CHUNG UK TSUEN.

THE RESUMPTION WILL INVOLVE 74 PRIVATE AGRICULTURAL LOTS WITH A TOTAL AREA OF ABOUT 25,768 SQUARE METRES.

THE RESUMPTION PROGRAMME CAN SERVE THE FOLLOWING PURPOSES:

- \* CLEARING OF THE AREA WHICH IS AGRICULTURAL LAND OCCUPIED BY NON-PERMITTED STRUCTURES OR STRUCTURES UNDER TEMPORARY WAIVERS, IN LINE WITH GOVERNMENT'S POLICY OF IMPROVING HOUSING STANDARDS AND THE ENVIRONMENT IN VILLAGES AND ENSURING A PLANNED AND MORE ORDERLY DEVELOPMENT OF VILLAGE ENVIRONMENTS;

/\* PROVIDING NEW .....

FRIDAY, OCTOBER 21, 1994

- 20 -

- \* PROVIDING NEW ACCESS ROADS AND DRAINAGE SYSTEMS FOR CHUNG UK TSUEN; AND
- \* GRANTING OF PART OF THE AREA AFTER RE-DEVELOPMENT TO THE INDIGENOUS VILLAGERS FOR CONSTRUCTION OF SMALL HOUSES, IN COMPATIBILITY WITH THE DEVELOPMENT OF THE RURAL AREA AND TO MEET THE GROWING HOUSING NEEDS OF THE VILLAGERS.

THE RELATED WORKS ARE SCHEDULED TO BEGIN IN FEBRUARY NEXT YEAR FOR COMPLETION IN 15 MONTHS.

RESUMPTION NOTICES WERE GAZETTED TODAY (FRIDAY) AND THE LAND CONCERNED WILL BE REVERTED TO THE GOVERNMENT THREE MONTHS LATER.

- - - - 0 - - - -

DRAINAGE CHANNELS PLANNED FOR NGAU TAM MEI  
\* \* \* \* \*

THE GOVERNMENT IS PLANNING THE CONSTRUCTION OF DRAINAGE CHANNELS IN NGAU TAM MEI, YUEN LONG, TO ALLEVIATE THE FLOODING PROBLEMS IN THE AREA.

THE CHANNELS WILL BE BUILT WITHIN AN AREA OF ABOUT 1.48 HECTARES OF FORESHORE AND SEABED.

THE WORKS WILL BEGIN IN EARLY 1996 FOR COMPLETION IN EARLY 1999.

THE EXTENT OF THE AREA AFFECTED IS GAZETTED TODAY (FRIDAY).

A NOTICE AND A RELATED PLAN CAN BE SEEN ON THE NOTICE BOARD POSTED NEAR THE SITE.

THE PLAN CAN ALSO BE SEEN AT THE LANDS DEPARTMENT'S SURVEY AND MAPPING OFFICE, 14TH FLOOR, MURRAY BUILDING, GARDEN ROAD, HONG KONG AND THE YUEN LONG DISTRICT OFFICE, GROUND FLOOR, YUEN LONG DISTRICT BRANCH OFFICES BUILDING, 269 CASTLE PEAK ROAD, YUEN LONG, NEW TERRITORIES.

ANY PERSON WHO CONSIDERS THAT HE HAS AN INTEREST, RIGHT OR EASEMENT IN OR OVER THE FORESHORE AND SEABED INVOLVED MAY SUBMIT A WRITTEN OBJECTION TO THE DIRECTOR OF LANDS BY DECEMBER 21.

- - - - 0 - - - -

/21 .....

FRIDAY, OCTOBER 21, 1994

- 21 -

TENDERS INVITED FOR WEST KOWLOON RECLAMATION DRAINAGE WORKS  
\* \* \* \* \*

THE TERRITORY DEVELOPMENT DEPARTMENT IS INVITING TENDERS FOR THE SECOND PACKAGE OF SEWERAGE WORKS FOR THE WEST KOWLOON RECLAMATION.

THE WORKS MAINLY COMPRISE CONSTRUCTION OF TWO PUMPING STATIONS, TRUNK SEWERS AND AN ACCESS ROAD.

THE PROJECT FORMS PART OF PERMANENT SEWERAGE FACILITIES FOR THE WEST KOWLOON RECLAMATION AND WILL SERVE A NUMBER OF EXISTING AS WELL AS FUTURE DEVELOPMENTS ON THE RECLAMATION.

THE WORKS ARE SCHEDULED TO BEGIN IN JANUARY 1995 FOR COMPLETION IN JANUARY 1997.

A NOTICE INVITING TENDERS WAS GAZETTED TODAY (FRIDAY).

TENDER FORMS AND OTHER PARTICULARS MAY BE OBTAINED FROM THE OFFICE OF MOTT MACDONALD HONG KONG LIMITED, 12TH FLOOR, SUN HUNG KAI CENTRE, 30 HARBOUR ROAD, WAN CHAI, HONG KONG.

THE TENDER CLOSING DATE IS NOON ON DECEMBER 16.

- - - - 0 - - - -

TENDERS INVITED FOR TWO SPORTS PROJECTS IN NEW TOWNS  
\* \* \* \* \*

THE ARCHITECTURAL SERVICES DEPARTMENT IS INVITING TENDERS FOR THE CONSTRUCTION OF A SWIMMING POOL COMPLEX IN AREA 100, MA ON SHAN, THE NEW TERRITORIES.

THE COMPLEX HAS A STANDARD MAIN POOL, THREE TEACHING POOLS, A TODDLER POOL, AN INTEGRATED LEISURE POOL WITH WATER SLIDES, A STAND FOR 1,200 SPECTATORS, TWO SINGLE-STOREY SERVICE BUILDINGS AS WELL AS THE ASSOCIATED DRAINAGE AND EXTERNAL WORKS.

MEANWHILE, THE DEPARTMENT IS ALSO CALLING FOR TENDERS FOR THE SUPPLY AND INSTALLATION OF ALL WEATHER ATHLETIC SURFACING FOR 11-A-SIDE SOCCER PITCH-CUM-ATHLETIC FACILITIES IN AREA 14, TUEN MUN, THE NEW TERRITORIES.

WORKS FOR THE TWO PROJECTS ARE EXPECTED TO START IN JANUARY FOR COMPLETION BY MARCH 1996 AND DECEMBER 1995 RESPECTIVELY.

TENDER FORMS AND FURTHER PARTICULARS CAN BE OBTAINED FROM THE ARCHITECTURAL SERVICES DEPARTMENT, 34TH FLOOR, QUEENSWAY GOVERNMENT OFFICES, 66 QUEENSWAY, HONG KONG.

TENDER OFFERS WILL CLOSE AT NOON ON NOVEMBER 11.

- - - - 0 - - - -

RECONSTRUCTION OF TAK WAH STREET PROPOSED

\* \* \* \* \*

THE NEW TERRITORIES WEST DEVELOPMENT OFFICE OF THE TERRITORY DEVELOPMENT DEPARTMENT HAS PROPOSED RECONSTRUCTING AND REALIGNING TAK WAH STREET IN TSUEN WAN TO ALLEVIATE TRAFFIC CONGESTION.

THE WORKS ALSO INCLUDE THE CONSTRUCTION OF A PUBLIC LIGHT BUS STAND AND A LOADING/UNLOADING BAY ON THE NORTH AND SOUTH SIDES OF THE STREET RESPECTIVELY.

THE WORKS ARE SCHEDULED TO BEGIN EARLY NEXT YEAR FOR COMPLETION IN 12 MONTHS.

A NOTICE ON THE PROPOSED ROAD WORKS WAS GAZETTED TODAY (FRIDAY).

THE PLAN AND SCHEME MAY BE INSPECTED DURING OFFICE HOURS AT:

\* THE PUBLIC ENQUIRY SERVICES CENTRE OF THE CENTRAL AND WESTERN DISTRICT OFFICE, GROUND FLOOR, HARBOUR BUILDING, 38 PIER ROAD, CENTRAL, HONG KONG;

\* TSUEN WAN DISTRICT LANDS OFFICE, AND TSUEN WAN DISTRICT OFFICE, BOTH AT TSUEN WAN MTR STATION MULTI-STOREY CARPARK BUILDING, 174-208 CASTLE PEAK ROAD, TSUEN WAN.

ANY ONE WISHING TO OBJECT TO THE PROPOSAL SHOULD WRITE TO THE SECRETARY FOR TRANSPORT, CENTRAL GOVERNMENT OFFICES, EAST WING, SECOND FLOOR, LOWER ALBERT ROAD, HONG KONG NO LATER THAN DECEMBER 20, DESCRIBING HIS INTEREST AND MANNER IN WHICH HE WILL BE AFFECTED.

- - - - 0 - - - -

CONSTRUCTION OF LAM FUNG STREET

\* \* \* \* \*

THE HIGHWAYS DEPARTMENT IS INVITING TENDER FOR THE CONSTRUCTION OF LAM FUNG STREET, REMAINING PORTION OF WANG TAI ROAD, WANG YUEN STREET AND KAI SHUN ROAD.

THE WORKS ARE EXPECTED TO START IN JANUARY AND TO BE COMPLETED IN DECEMBER NEXT YEAR.

THE WORKS HAVE BEEN DESIGNED AND CONSTRUCTION WILL BE SUPERVISED BY THE HIGHWAYS DEPARTMENT.

A NOTICE ON TENDER INVITATION HAS BEEN GAZETTED TODAY (FRIDAY).

FORMS OF TENDER AND FURTHER PARTICULARS MAY BE OBTAINED FROM REGIONAL HIGHWAY ENGINEER/KOWLOON, HIGHWAYS DEPARTMENT, ROOM NO. 1321, 13TH FLOOR, NAN FUNG COMMERCIAL CENTRE, 19 LAM LOK STREET, KOWLOON BAY, KOWLOON. ENQUIRIES CAN BE MADE ON TEL 707 7438.

/TENDERS MUST .....

FRIDAY, OCTOBER 21, 1994

- 23 -

TENDERS MUST BE ADDRESSED TO THE CHAIRMAN, CENTRAL TENDER BOARD, AND PLACED IN THE GOVERNMENT SECRETARIAT TENDER BOX AT THE LIFT LOBBY ON THE LOWER GROUND FLOOR OF THE CENTRAL GOVERNMENT OFFICES, EAST WING, LOWER ALBERT ROAD, HONG KONG, BEFORE NOON ON NOVEMBER 11.

LATE TENDERS WILL NOT BE ACCEPTED.

- - - - 0 - - - -

#### 48 GURKHA INFANTRY BRIGADE TO DISBAND

\* \* \* \* \*

AFTER MORE THAN 50 YEARS SERVICE, HONG KONG'S OWN 48 GURKHA INFANTRY BRIGADE IS TO DISBAND.

THE BRIGADE, WHICH HAS ITS HEADQUARTERS AT SEK KONG, HAS EXERCISED OPERATIONAL CONTROL OVER THE ARMY COMBAT UNITS OF THE HONG KONG GARRISON.

THE OCCASION WILL BE MARKED BY A PARADE FEATURING THE COMBINED PIPES AND DRUM BANDS OF 1ST AND 2ND ROYAL GURKHA RIFLES WHO WILL PERFORM ESSENTIALLY THE SAME MUSIC AS WAS PLAYED AT THE BRIGADE'S FORMATION PARADE IN OCTOBER 1941.

FOLLOWING THE PARADE, THERE WILL BE A REVIEW OF THE BRIGADE'S HISTORY AND ITS VICTORIA CROSSES (VC) CITATIONS.

THE LOWERING OF THE BRIGADE FLAG, FOR THE LAST TIME, WILL BE ACCOMPANIED BY PIPERS FROM THE QUEEN'S GURKHA SIGNALS. THE EVENING WILL FINISH WITH A SHORT FIREWORK DISPLAY.

THE BRIGADE DISTINGUISHED ITSELF DURING THE CAMPAIGN IN BURMA DURING THE SECOND WORLD WAR AND AGAIN DURING OPERATIONS IN MALAYA.

THE LIST OF THOSE WHO HAVE COMMANDED INCLUDES WELL KNOWN SOLDIERS SUCH AS: MAJOR GENERAL MIKE CARLTON-SMITH, LIEUTENANT GENERAL SIR PETER DUFFELL AND FIELD MARSHALL SIR JOHN CHAPPLE.

- - - - -

#### NOTE TO EDITORS:

YOU ARE INVITED TO COVER THE PARADE AND FLAG LOWERING CEREMONY ON TUESDAY (OCTOBER 25). THOSE WISHING TO ATTEND SHOULD REPORT TO THE MAIN GATE OF BORNEO LINES, SEK KONG, NEW TERRITORIES, NO LATER THAN 7.45 PM. MILITARY PRESS OFFICERS WILL BE ON HAND TO ASSIST.

ATTACHED IS A CHRONOLOGY, A LIST OF BATTLE HONOURS AND A LIST OF VC WINNERS FROM 48 BRIGADE, WHICH MAY BE USEFUL FOR BACKGROUND INFORMATION.

/CHRONOLOGY OF .....

## CHRONOLOGY OF 48 GURKHA INFANTRY BRIGADE

\* \* \* \* \*

OCTOBER 1941	FORMED AS 48 INDIAN INFANTRY BRIGADE SECUNDERABAD.
JANUARY 1942	SHIPPED TO BURMA. JOINED 17 INDIAN DIVISION ON 8 FEBRUARY.
MAY 1942	CROSSED THE BORDER INTO INDIA DURING THE WITHDRAWAL FROM BURMA.
MARCH 1943 - MARCH 1944	OPERATIONS IN THE TIDDIM/CHIN HILLS AREAS.
MARCH - MAY 1944	THE DEFENCE OF IMPHAL.
JULY - DECEMBER 1944	TRAINING AND RE-EQUIPPING IN THE RANCHI AREA.
DECEMBER 1944 - FEBRUARY 1945	IMPHAL.
FEBRUARY 1945	RETURN TO BURMA.
MARCH 1945	MEIKTILA CAPTURED.
APRIL - AUGUST 1945	ADVANCE TO RANGOON.
SEPTEMBER 1945	THE JAPANESE SURRENDER.
NOVEMBER 1945 - MAY 1947	GARRISON DUTIES IN BURMA.
MAY 1947	48 INDIAN INFANTRY BRIGADE DISBANDED.
DECEMBER 1949	48 GURKHA INFANTRY BRIGADE REFORMED AT MENTAKAB, MALAYA.
JUNE 1950	MOVE TO KUALA LIPIS, MALAYA.
APRIL 1952	MOVE TO IPOH, MALAYA.
NOVEMBER 1954	MOVE TO SEK KONG, HONG KONG.
DECEMBER 1976	48 GURKHA INFANTRY BRIGADE WERE DISBANDED WHEN GURKHA FIELD FORCE WAS FORMED BY THE AMALGAMATION OF 48 GURKHA INFANTRY BRIGADE AND 51 INFANTRY BRIGADE UNITS.
DECEMBER 1986	GURKHA FIELD FORCE DISBANDED. 48 GURKHA INFANTRY BRIGADE REFORMED.
NOVEMBER 1994	48 GURKHA INFANTRY BRIGADE DISBAND AT SEK KONG AS A PART OF THE UNDOWN OF BRITISH FORCES IN HONG KONG.

48 GURKHA INFANTRY BRIGADE  
BATTLE HONOURS

\* \* \* \* \*

HMAWZA 1 APRIL 1942  
-----

AFTER BEING ENCIRCLED AT HMAWZA, NORTH OF PROME, 48 BRIGADE REPULSED ITS ASSAILANTS, INFLECTING HEAVY LOSSES BY ATTACKING THEM IN THE FLANK. THE BRIGADE THEN WITHDREW TO THE NORTH.

KOKKOGWA 11/12 APRIL 1942  
-----

DURING THE NIGHT OF 12TH APRIL THE JAPANESE LAUNCHED REPEATED HEAVY ATTACKS ON THE BRIGADE POSITION. AT DAWN AFTER HAND TO HAND FIGHTING THE JAPANESE WERE FINALLY REPULSED AND THE WITHDRAWAL CONTINUED.

KYAUKSE 29/30 APRIL 1942  
-----

AT 2200 HRS ON 29 APRIL THE JAPANESE LAUNCHED A FIERCE ATTACK AGAINST THE BRIGADE POSITIONS ASTRIDE THE ROAD TO MANDALAY AT KYAUKSE. THE GURKHAS HELD THEIR FIRE UNTIL THE ENEMY WERE WITHIN 150 YARDS OF THEIR POSITIONS. THE JAPANESE LOST OVER 500 KILLED FOR THE LOSS OF ONLY 10 KILLED AND WOUNDED IN 48 BRIGADE. THE ATTACK CONTINUED UNTIL 1700 HRS ON 30 APRIL WHEN THE BRIGADE BROKE CONTACT AND WITHDREW.

SHWEGYIN 8 MAY 1942  
-----

DURING THE FINAL WITHDRAWAL OF THE ARMY AT SHWEGYIN ACROSS THE CHINDWIN RIVER, 48 BRIGADE HELD A DEFENSIVE POSITION AGAINST THE JETTY AND WERE HEAVILY ATTACKED BY THE ENEMY. THEY HELD THEIR POSITION LONG ENOUGH FOR THE REMAINDER OF THE ARMY TO ESCAPE ON FOOT UP A MULE TRACK BEFORE THEMSELVES FOLLOWING ALONG THE SAME TRACK.

CHIN HILLS 1943  
-----

48 BRIGADE WERE DEPLOYED IN THE CHIN HILLS FOR MOST OF 1943, HOLDING AND BUILDING THE ROAD INTO THE IMPHAL PLAIN IN THE AREA OF TIDDIM. THEY FOUGHT A SMALL BUT CONTINUOUS AND BITTER WAR AGAINST THE JAPANESE 33RD DIVISION.

MILESTONE 109, TIDDIM ROAD 21/22 MARCH 1944  
-----

DURING THE WITHDRAWAL TO IMPHAL AT MILESTONE 109 48 BRIGADE BROKE THROUGH A STRONGLY HELD JAPANESE DEFENSIVE POSITION ASTRIDE THE ROAD. THIS CLEARED THE WAY FOR THE REMAINDER OF 17 DIVISION TO WITHDRAW AND PREVENTED THEIR DESTRUCTION BY THE ENEMY.

/PALEL HILLS .....

PALEL HILLS 6-8 MAY 1944  
-----

THE PALEL HILLS WERE CLEARED BY 48 BRIGADE AFTER A SERIES OF SHORT ACTIONS AROUND LLANGOL. THIS RELIEVED THE JAPANESE PRESSURE ON IMPHAL FROM THE EAST.

MILESTONE 33, TIDDIM ROAD 15-30 MAY 1944  
-----

48 BRIGADE INFILTRATED BEHIND THE ENEMY AT IMPHAL AND FORMED A ROAD BLOCK AT MILESTONE 33. THEY HELD THE ROAD BLOCK AND PREVENTED ENEMY REINFORCEMENTS MOVING UP TO IMPHAL WHILE AT THE SAME TIME CAUSING A VERY LARGE NUMBER OF CASUALTIES TO THE JAPANESE. AS A RESULT THE REMAINDER OF 17 DIVISION WERE ABLE TO DESTROY THE ENEMY 33RD DIVISION PIECEMEAL IN FRONT OF IMPHAL.

MEIKTILA EAST 2 MARCH 1945  
-----

THE JAPANESE LAST OPPORTUNITY TO HALT THE ADVANCE INTO BURMA WAS AT MEIKTILA. 48 BRIGADE IN CONJUNCTION WITH 225 INDIAN TANK BRIGADE CAPTURED THE EASTERN HALF OF MEIKTILA TOWN AFTER A VERY HEAVY FIGHT.

DEFENCE OF MEIKTILA 5-29 MARCH 1945  
-----

THE JAPANESE THREW ALL OF THEIR RESERVES INTO AN ATTACK ON MEIKTILA IN AN ATTEMPT TO RECAPTURE THE TOWN AND REGAIN THE INITIATIVE. THE BATTLE WAS HARD FOUGHT WITH MANY CASUALTIES ON EACH SIDE.

PYAWBWE 10-17 APRIL 1945  
-----

IN PYAWBWE 48 BRIGADE CLEARED THE CANTONMENT AREA OF THE TOWN IN FIERCE HAND TO HAND FIGHTING.

PEGU 26-30 APRIL 1945  
-----

PEGU WAS THE LAST MAJOR BATTLE OF THE BURMA WAR AND WAS THE SITE OF 48 BRIGADE'S FIRST BATTLE AFTER THE SITTANG DISASTER IN 1942 WHEN THEY BROKE THROUGH THE JAPANESE ENCIRCLEMENT AT THE BEGINNING OF THE WITHDRAWAL FROM BURMA.

RANGOON ROAD MARCH - APRIL 1945  
-----

48 BRIGADE WAS INVOLVED IN NUMEROUS ACTIONS ALONG THE RANGOON ROAD DURING THIS PERIOD. THE REMNANTS OF THE JAPANESE ARMY WERE DESTROYED AS THEY LEFT THE COVER OF THE PEGU YOMAS HILLS.

- 27 -

BURMA CAMPAIGN 1942-1945  
-----

MALAYA 1949 - 1954  
-----

48 BRIGADE WAS REFORMED IN 1949 FOR OPERATIONS AGAINST THE COMMUNIST TERRORISTS IN MALAYA. FOR FIVE YEARS UNITS OF THE BRIGADE MOUNTED CONTINUOUS AND SUCCESSFUL OPERATIONS AGAINST THE TERRORISTS.

VICTORIA CROSSES WON BY MEMBERS OF  
48 GURKHA INFANTRY BRIGADE

\* \* \* \* \*

HAVILDAR GAJE GHALE, 5TH ROYAL GURKHA RIFLES (FRONTIER FORCE)  
26 MAY 1943

SERGEANT HANSON VICTOR TURNER (POSTHUMOUS), THE WEST YORKSHIRE  
REGIMENT (PRINCE OF WALES' OWN)  
7 JUNE 1944

RIFLEMAN GUNJU LAMA, 7TH GURKHA RIFLES  
12 JUNE 1944

SUBEDAR NETRABAHADUR THAPA (POSTHUMOUS), 5TH ROYAL GURKHARIFLES  
(FRONTIER FORCE)  
25 JUNE 1944

NAIK AGANSING RAI, 5TH ROYAL GURKHA RIFLES (FRONTIER FORCE)  
26 JUNE 1944

LIEUTENANT WILLIAM BASIL WESTON (POSTHUMOUS), THE GREEN HOWARDS  
ATTACHED TO THE WEST YORKSHIRE REGIMENT (PRINCE OF WALES' OWN)  
3 MARCH 1945

THE SEVERITY OF THE BATTLE FOR IMPHAL IS ILLUSTRATED BY THE FACT THAT FOUR OF THE BRIGADE'S SIX VICTORIA CROSSES WERE WON IN THAT BATTLE IN THE MONTH OF JUNE 1944.

- - - - 0 - - - -

YUEN LONG DISTRICT BOARD CHAIRMAN ELECTED

\* \* \* \* \*

MR TAI KUEN AND MR LAI KWOK-IU WERE RE-ELECTED UNOPPOSED AS CHAIRMAN OF THE YUEN LONG DISTRICT BOARD AND THE BOARD'S REPRESENTATIVE TO THE REGIONAL COUNCIL RESPECTIVELY AT A MEETING TODAY (FRIDAY).

MEANWHILE, SIX FUNCTIONAL COMMITTEE CHAIRMEN OF THE YUEN LONG DISTRICT BOARD HAVE ALSO BEEN NAMED.

THEY ARE MR TANG KI-TAT OF THE CULTURE, RECREATION AND SPORTS COMMITTEE; MR LO YUK-FAN OF THE ENVIRONMENTAL IMPROVEMENT COMMITTEE; MR TANG PUI-HON OF THE FINANCE COMMITTEE; MR WONG KIN-WING OF THE SOCIAL SERVICES AND PUBLICITY COMMITTEE; MR TANG CHI-LEUNG OF THE TOWN PLANNING AND DEVELOPMENT COMMITTEE AND MR MAN FOR-TAI OF THE TRAFFIC AND TRANSPORT COMMITTEE.

- - - - 0 - - - -

NO NOMINATION RECEIVED TODAY FOR REGCO BY-ELECTION

\* \* \* \* \*

THERE IS NO NOMINATION FOR THE REGIONAL COUNCIL BY-ELECTION IN RESPECT OF THE KWAI CHUNG EAST CONSTITUENCY TODAY (FRIDAY), THE FIRST DAY OF THE TWO-WEEK NOMINATION PERIOD.

NOMINATIONS ARE BEING CALLED FOR UNTIL NOVEMBER 3. THE BY-ELECTION IS SCHEDULED FOR DECEMBER 4.

- - - - 0 - - - -

A COMPANY DIRECTOR FINED FOR MAKING INCORRECT TAX RETURNS

\* \* \* \* \*

A COMPANY DIRECTOR PLEADED GUILTY IN THE KWUN TONG MAGISTRACY TO MAKING INCORRECT STATEMENTS IN HIS SALARIES TAX RETURNS WITHOUT REASONABLE EXCUSE, CONTRARY TO SECTION 80 (2) (B) OF THE INLAND REVENUE ORDINANCE.

THE DEFENDANT, KONG PAN, WAS CHARGED WITH MAKING INCORRECT CLAIMS FOR DEPENDENT PARENT ALLOWANCE IN HIS TAX RETURNS FOR THE YEARS OF ASSESSMENT 1991/92 AND 1992/93.

DESPITE THE DEATH OF HIS MOTHER ON DECEMBER 23, 1990, THE DEFENDANT STILL PUT DOWN HIS MOTHER'S NAME ON HIS TAX RETURNS AND CLAIMED FOR THE DEPENDENT PARENT ALLOWANCE.

THE DEFENDANT WAS FINED A TOTAL OF \$25,625.

A SPOKESMAN FOR THE INLAND REVENUE DEPARTMENT TODAY (FRIDAY) REMINDED THE TAXPAYERS THAT THEY MUST FILE CORRECT TAX RETURNS.

UNDER THE INLAND REVENUE ORDINANCE, A TAX EVADER IS LIABLE TO A MAXIMUM SENTENCE OF THREE YEARS' IMPRISONMENT AND A FINE OF \$20,000 ON EACH CHARGE, IN ADDITION TO A FURTHER FINE EQUIVALENT TO THREE TIMES THE AMOUNT OF TAX UNDERCHARGED.

- - - - 0 - - - -

EX-CHINA VIETNAMESE ILLEGAL IMMIGRANTS RETURNED

\* \* \* \* \*

A TOTAL OF 89 EX-CHINA VIETNAMESE ILLEGAL IMMIGRANTS (ECVIIS), COMPRISING 38 MEN, 21 WOMEN, 18 BOYS AND 12 GIRLS, WERE RETURNED TO NANNING, GUANGXI BY AIR THIS (FRIDAY) MORNING.

DISCUSSIONS ARE CONTINUING WITH THE CHINESE AUTHORITIES ON THE REPATRIATION OF THE 550 ECVIIS STILL REMAINING IN HONG KONG.

- - - - 0 - - - -

BETTER AMBULANCE SERVICE

\* \* \* \* \*

HONG KONG PEOPLE WILL ENJOY HIGHER QUALITY AND MORE EFFICIENT AMBULANCE SERVICE AS MORE AND MORE AMBULANCE PERSONNEL WILL BE EQUIPPED WITH EMERGENCY MEDICAL ASSISTANT (EMA) QUALIFICATION.

THE CHIEF AMBULANCE OFFICER, MR MAK KWAI-PUI, SAID THIS TODAY (FRIDAY) AT A PRESENTATION CEREMONY OF COMMENDATIONS TO 16 AMBULANCEMEN AT SAI WAN HO AMBULANCE DEPOT.

"THE PARAMEDIC AMBULANCE SERVICE, INTRODUCED LAST YEAR, HAS ENABLED AMBULANCE PERSONNEL TO RENDER COMPREHENSIVE ASSESSMENT ON THE INJURIES OF THE PATIENTS OR CASUALTIES, AND TO ADMINISTER DEFIBRILLATION, INTRAVENOUS INFUSION OR SPECIFIED MEDICINES TREATMENT ON THEM," HE SAID.

MR MAK DESCRIBED THE RESULTS AS "VERY ENCOURAGING", ADDING THAT THE IMPLEMENTATION OF THIS HIGHER QUALITY SERVICE WOULD MARK A NEW CHAPTER OF HONG KONG'S AMBULANCE SERVICE.

HE ALSO PRAISED THE COMMENDATION RECIPIENTS FOR THEIR PROFESSIONAL SKILLS AND EXEMPLARY PERFORMANCES WHICH HELPED SAVE THE LIVES OF SEVERAL PEOPLE IN THE PAST FOUR MONTHS, WITH THE APPLICATION OF DEFIBRILLATION AND CARDIO-PULMONARY RESUSCITATION.

THE RECIPIENTS ARE PRINCIPAL AMBULANCEMEN WAN KAM-HUNG, CHAN CHIN-HUNG, LEUNG PONG-CHI; SENIOR AMBULANCEMEN LEUNG MIN-WAH, HUI HON-KEUNG, WONG SHU-PUI, LAM SHUNG-LAI; AND AMBULANCEMEN NG KIN-SANG, WONG WANG-SHUN, WONG HOU-MAN, LEUNG WAI-KWONG, TSE CHOY, WONG KAR-CHOI, LAM SING-BO, HA KWOK-WAH AND LAI CHE-WAI.

- - - - 0 - - - -

FRIDAY, OCTOBER 21, 1994

- 30 -

HONG KONG MONETARY AUTHORITY  
MONEY MARKET OPERATIONS  
\* \* \* \* \*

	\$ MILLION	TIME (HOURS)	CUMULATIVE CHANGE (\$ MILLION)
	-----	-----	-----
OPENING BALANCE IN THE ACCOUNT	2,131	0930	+1,353
CLOSING BALANCE IN THE ACCOUNT	2,569	1000	+1,353
CHANGE ATTRIBUTABLE TO :		1100	+1,363
MONEY MARKET ACTIVITY	+1,363	1200	+1,363
LAF TODAY	-925	1500	+1,363
		1600	+1,363
LAF RATE 3.00 BID/5.00 OFFER	TWI 120.6	*-0.3*	21.10.94

HONG KONG MONETARY AUTHORITY

EF BILLS

EF NOTES/HONG KONG GOVERNMENT BONDS

TERMS	YIELD	TERM	ISSUE	COUPON	PRICE	YIELD
1 WEEK	4.45	19 MONTHS	2605	6.35	99.97	6.47
1 MONTH	4.64	22 MONTHS	2608	6.15	99.28	6.68
3 MONTHS	5.02	30 MONTHS	3704	6.15	97.87	7.21
6 MONTHS	5.32	33 MONTHS	3707	6.95	99.25	7.38
12 MONTHS	5.90	59 MONTHS	5909	7.45	97.59	8.21

TOTAL TURNOVER OF BILLS AND BONDS - 20,742 MN

CLOSED 21 OCTOBER 1994

- - - 0 - - - -