



## DAILY INFORMATION BULLETIN

ISSUED BY GOVERNMENT INFORMATION SERVICES  
BEACONSFIELD HOUSE, HONG KONG. TEL: 5-233191

THURSDAY, JULY 31, 1986

<u>CONTENTS</u>	<u>PAGE NO.</u>
COMPLEX COMMERCIAL CRIME REPORT WELCOMED .....	1
FINAL REGISTER OF LEGCO ELECTORS OUT TOMORROW .....	2
RETAIL SALES SURVEY RESULTS FOR MAY RELEASED .....	3
BAN ON IMPORTS OF GOLD COINS FROM SOUTH AFRICA .....	7
DECISIONS ON AIR LICENCES ANNOUNCED .....	8
TEXTILE INDUSTRY MAKES GAINS IN FINISHING .....	8
BANNED HORMONES IN FOOD: PENALTIES SPELT OUT .....	9
ISLAND COUNTRY PARKS PERMANENTLY DESIGNATED .....	10
YAN OI TONG PRAISED FOR COMMUNITY SERVICES .....	11
NEW LANDLORD AND TENANT ORDINANCE IN OPERATION .....	11
DB MEMBERS VISIT CONTAINER TERMINAL .....	12
NEW DO GETTING TO KNOW TAI PO .....	13
SECOND LITTERBUG BLITZ ON THE WAY .....	13
DETAILS OF SPORTS SCHEME .....	14
OFFICES ON THE MOVE .....	14
PROHIBITED ZONE IN MOUNT DAVIS ROAD .....	14
NEW GREEN MINIBUS ROUTE INTRODUCED .....	15
TEMPORARY ROAD CLOSURE .....	15

THURSDAY, JULY 31, 1986

- 1 -

COMPLEX COMMERCIAL CRIME REPORT WELCOMED

\* \* \* \* \*

A LEGAL DEPARTMENT SPOKESMAN TODAY (THURSDAY) WELCOMED THE REPORT ON THE PROSECUTION AND TRIAL OF COMPLEX COMMERCIAL CRIMES COMPLETED BY A LEGCO SELECT COMMITTEE UNDER THE CHAIRMANSHIP OF PETER C. WONG.

THE SPOKESMAN SAID THAT THE ADMINISTRATION WAS APPRECIATIVE OF THE CAREFUL EXAMINATION WHICH THE LEGCO GROUP HAD GIVEN TO THIS IMPORTANT AREA OF THE LAW.

COMMERCIAL CRIME WAS A MATTER OF GRAVE CONCERN IN HONG KONG, BOTH IN TERMS OF THE SIZE AND NUMBER OF CASES INVOLVED.

IT WAS APPROPRIATE THAT THE PROBLEMS POSED BY THE PROSECUTION AND TRIAL OF COMPLEX COMMERCIAL CRIME SHOULD HAVE BEEN THE SUBJECT OF SUCH THOROUGH SCRUTINY.

THE REPORT WOULD NEED TO BE STUDIED IN DETAIL BEFORE A COMPREHENSIVE RESPONSE COULD BE GIVEN BUT IN THE MEANTIME THE LEGAL DEPARTMENT SPOKESMAN COMMENDED THE PROPOSAL TO DISPENSE WITH COMMITTAL PROCEEDINGS IN COMPLEX COMMERCIAL CRIME CASES.

HE WAS ALSO PLEASED TO NOTE THAT THE COMMITTEE HAD AGREED WITH THE APPROACH ADOPTED IN THE ROSKILL REPORT IN ENGLAND IMPOSING A REQUIREMENT ON THE DEFENCE TO OUTLINE THE NATURE OF THEIR CASE AT THE PREPARATORY STAGE.

THIS WAS A REFORM WHICH HAD BEEN STRONGLY SUPPORTED BY THE ATTORNEY GENERAL IN HIS EVIDENCE TO THE SELECT COMMITTEE AND THE LEGAL DEPARTMENT SPOKESMAN PRAISED THE COMMITTEE FOR RECOGNISING THE MERITS OF THIS PROPOSAL.

THE SPOKESMAN NOTED THAT THE SELECT COMMITTEE REPORT FAVOURED THE RETENTION OF JURY TRIALS IN COMPLEX COMMERCIAL CRIMES.

HE POINTED OUT THAT THE ATTORNEY GENERAL HAD ADVOCATED SUCH AN APPROACH BOTH IN THE LEGISLATIVE COUNCIL AND IN HIS EVIDENCE TO THE SELECT COMMITTEE WHEN HE SAID +IT WOULD IN MY JUDGMENT BE FRAUGHT WITH DANGER TO INTRODUCE A MODE OF TRIAL THAT DID NOT COMMAND BROAD SUPPORT. IT IS NO LONGER A QUESTION OF WHETHER THE BILL'S PROPOSALS ARE GOOD ONES OR THE BEST OF THE ALTERNATIVES, IT IS A QUESTION OF WHETHER THEY WOULD GENERALLY BE REGARDED AS A BASIS FOR A FAIR TRIAL IF THEY WERE PASSED INTO LAW+.

THE SELECT COMMITTEE'S RECOMMENDATION ON THIS WOULD BE CAREFULLY CONSIDERED BY THE EXECUTIVE COUNCIL.

THE SPOKESMAN ADDED THAT THE WHOLE OF THE SELECT COMMITTEE'S REPORT WOULD HAVE TO BE STUDIED IN DETAIL. IT WOULD BE FOR THE EXECUTIVE COUNCIL TO DECIDE WHETHER TO WITHDRAW THE TRIAL OF COMMERCIAL CRIMES BILL AND PROCEED WITH A NEW BILL OR TO AMEND THE BILL AT PRESENT BEFORE THE LEGISLATIVE COUNCIL.

- - - - 0 - - - -

/2 .....

THURSDAY, JULY 31, 1986

- 2 -

FINAL REGISTER OF LEGCO ELECTORS OUT TOMORROW  
\* \* \* \* \*

A FINAL REGISTER OF LEGISLATIVE COUNCIL ELECTORS, 1986 WILL BE RELEASED FOR PUBLIC INSPECTION FROM TOMORROW (FRIDAY) AT ALL DISTRICT OFFICES AND AT THE REGISTRATION AND ELECTORAL DIVISION OF THE GOVERNMENT SECRETARIAT.

PARTICULARS OF 5 137 CORPORATE ELECTORS AND 37 727 INDIVIDUAL ELECTORS ARE LISTED IN THE REGISTER WHICH WILL REMAIN IN FORCE FOR THE NEXT 12 MONTHS, A GOVERNMENT SPOKESMAN SAID.

+WHILE AMENDMENTS CAN STILL BE MADE, THERE WILL NOT BE ANY ADDITIONS TO THE REGISTER DURING THIS PERIOD. ANY CHANGE OF ADDRESS OF ELECTORS OR CHANGE OF AUTHORISED REPRESENTATIVES OF CORPORATE ELECTORS SHOULD BE REPORTED TO THE REGISTRATION OFFICER AT HARBOUR CENTRE, TENTH FLOOR, 25 HARBOUR ROAD, HONG KONG,+ THE SPOKESMAN ADDED.

NAMES OF 501 NEW ELECTORS WERE ADDED THIS YEAR WHILE 4 715 NAMES WERE OMITTED FROM THE 1985 REGISTER. THE OMISSIONS WERE MAINLY INDIVIDUALS WHO FAILED TO REGISTER ON THE GENERAL ELECTORAL ROLL DURING LAST YEAR'S REGISTRATION EXERCISE.

A COMPARISON OF THE 1985 AND 1986 REGISTERS IS AS FOLLOWS:

	FINAL REGISTER 1985	PROVISIONAL REGISTER 1986	FINAL REGISTER 1986
	-----	-----	-----
TOTAL NO. OF ELECTORS IN THE 12 ELECTORAL COLLEGE CONSTITUENCIES	433	435	436
TOTAL NO. OF CORPORATE ELECTORS IN FUNCTIONAL CONSTITUENCIES	5 130	5 090	5 137
TOTAL NO. OF INDIVIDUAL ELECTORS IN FUNCTIONAL CONSTITUENCIES	41 515	37 244	37 291
TOTAL	47 078	42 769	42 864

ELIGIBLE PERSONS WHO ARE NOT YET ON THE LEGCO ELECTORS REGISTER SHOULD FIRST APPLY FOR REGISTRATION AS AN ELECTOR FOR THE URBAN COUNCIL/REGIONAL COUNCIL AND DISTRICT BOARD ELECTIONS BETWEEN AUGUST 15 AND SEPTEMBER 30 THIS YEAR.

THEN THEY CAN APPLY FOR ENROLMENT AS LEGISLATIVE COUNCIL ELECTORS IN APRIL 1987. APPLICATION FORMS CAN BE OBTAINED FROM ALL DISTRICT OFFICES AND THE REGISTRATION AND ELECTORAL DIVISION DURING THE RESPECTIVE PERIODS.

- - - - 0 - - - -

/3 .....

THURSDAY, JULY 31, 1986

- 3 -

RETAIL SALES SURVEY RESULTS FOR MAY RELEASED  
\*\*\*\*\*

THE VALUE OF TOTAL RETAIL SALES IN MAY 1986, PROVISIONALLY ESTIMATED, AT \$5 745 MILLION, WAS 3 PER CENT HIGHER THAN IN MAY 1985 WHICH THEIR VOLUME REMAINED ALMOST UNCHANGED, ACCORDING TO THE PROVISIONAL RESULTS OF A SURVEY RELEASED TODAY BY THE CENSUS AND STATISTICS DEPARTMENT.

COMPARED WITH MAY 1985, RETAIL SALES OF CLOTHING, FOOTWEAR AND ALLIED PRODUCTS INCREASED BY 18 PER CENT IN VALUE AND 9 PER CENT IN VOLUME. FOODSTUFFS, ALCOHOLIC DRINKS AND TOBACCO WENT UP BY 5 PER CENT IN BOTH SALES VALUE AND VOLUME.

FUELS DROPPED BY 15 PER CENT IN SALES VALUE BUT REMAINED ALMOST UNCHANGED IN SALES VOLUME. RETAIL SALES OF +OTHER CONSUMER GOODS+ ROSE BY 3 PER CENT IN VALUE BUT RECORDED ALMOST NO CHANGE IN VOLUME WHILE THOSE OF CONSUMER DURABLES SHOWED DECREASES OF 1 PER CENT AND 9 PER CENT IN VALUE AND VOLUME RESPECTIVELY.

ANALYSED BY SELECTED TRADES, THE SALES VALUE OF MOTOR VEHICLES AND PARTS INCREASED SLIGHTLY WHILE THAT OF CONSUMER DURABLES, OTHER THAN MOTOR VEHICLES AND PARTS, DECREASED SLIGHTLY. BOTH SHOWED A MODERATE DECREASE IN SALES VOLUME.

DEPARTMENT STORES RECORDED A SLIGHT INCREASE IN SALES VALUE BUT A SLIGHT DROP IN SALES VOLUME WHILE SUPERMARKETS EXPERIENCED SLIGHT FALLS IN BOTH SALES VALUE AND VOLUME.

COMPARING THE THREE-MONTH PERIOD MARCH-MAY 1986 WITH THE SAME PERIOD 12 MONTHS PREVIOUSLY, TOTAL RETAIL SALES RECORDED AN INCREASE OF 3 PER CENT IN VALUE BUT A NEGLIGIBLE CHANGE IN VOLUME.

RETAIL SALES OF CLOTHING, FOOTWEAR AND ALLIED PRODUCTS REGISTERED INCREASES OF 15 PER CENT IN VALUE AND 7 PER CENT IN VOLUME. FOODSTUFFS, ALCOHOLIC DRINKS AND TOBACCO ROSE BY 4 PER CENT IN BOTH SALES VALUE AND VOLUME.

ON THE OTHER HAND, RETAIL SALES OF CONSUMER DURABLES AND OF +OTHER CONSUMER GOODS+ WENT UP BY 2 PER CENT AND 3 PER CENT RESPECTIVELY IN VALUE BUT FELL BY 5 PER CENT AND 1 PER CENT RESPECTIVELY IN VOLUME.

FUELS SHOWED A DECREASE OF 9 PER CENT IN SALES VALUE BUT ALMOST NO CHANGE IN SALES VOLUME.

RETAIL SALES OF MOTOR VEHICLES AND PARTS RECORDED A MODERATE INCREASE IN VALUE BUT A MODERATE DROP IN VOLUME. SUPERMARKETS EXPERIENCED MODERATE INCREASES IN BOTH SALES VALUE AND VOLUME.

CONSUMER DURABLES, OTHER THAN MOTOR VEHICLES AND PARTS RECORDED ALMOST NO CHANGE IN SALES VALUE WHILE DEPARTMENT STORES HAD A SLIGHT INCREASE IN SALES VALUE. HOWEVER, THEY BOTH EXPERIENCED A SLIGHT DECREASE IN SALES VOLUME.

/WHEN COMPARED .....

THURSDAY, JULY 31, 1986

- 4 -

WHEN COMPARED WITH APRIL 1986, AND BEARING IN MIND THAT THIS COMPARISON IS AFFECTED BY SEASONAL FACTORS, TOTAL RETAIL SALES FOR MAY 1986 ROSE BY 3 PER CENT IN BOTH VALUE AND VOLUME TERMS. RETAIL SALES OF CONSUMER DURABLES INCREASED BY 7 PER CENT AND 6 PER CENT RESPECTIVELY IN VALUE AND VOLUME. THE CORRESPONDING INCREASES FOR CLOTHING, FOOTWEAR AND ALLIED PRODUCTS WERE 5 PER CENT AND 4 PER CENT.

+OTHER CONSUMER GOODS+ WENT UP BY 3 PER CENT IN BOTH SALES VALUE AND VOLUME WHILE FOODSTUFFS, ALCOHOLIC DRINKS AND TOBACCO RECORDED NEGLIGIBLE CHANGES IN SALES VALUE AND VOLUME. RETAIL SALES OF FUELS FELL BY 3 PER CENT IN VALUE BUT ROSE BY 2 PER CENT IN VOLUME.

ANALYSED BY SELECTED TRADES, RETAIL SALES OF CONSUMER DURABLES, OTHER THAN MOTOR VEHICLES AND PARTS, SHOWED MODERATE INCREASES IN BOTH VALUE AND VOLUME TERMS.

MOTOR VEHICLES AND PARTS SHOWED A MODERATE INCREASE IN SALES VALUE AND A SLIGHT INCREASE IN SALES VOLUME. SUPERMARKETS HAD SLIGHT INCREASES IN BOTH SALES VALUE AND VOLUME WHILE DEPARTMENT STORES HAD ALMOST NO CHANGE IN EITHER.

TWO TABLES AND TWO GRAPHS WILL BE SENT BY FACSIMILE NETWORK AND ALSO BOXED FOR COLLECTION.

TABLE 1 PRESENTS THE REVISED TOTAL RETAIL SALES FIGURE FOR APRIL 1986 AND THE PROVISIONAL FIGURE FOR MAY 1986.

TABLE 2 SHOWS THE VALUE AND VOLUME INDEXES OF RETAIL SALES IN APRIL 1986 AND MAY 1986 A) FOR ALL RETAIL TRADES, B) BY MAJOR TRADE GROUPS AND C) BY SELECTED TRADES (WHICH FORM PART OF THE RELEVANT MAJOR TRADE GROUPS), WITH AVERAGE MONTHLY RETAIL SALES IN 1980 TAKEN AS 100.

COMPARISONS OF MAY 1986 RESULTS WITH THOSE OF APRIL 1986 AND WITH THOSE OF MAY 1985 AND COMPARISONS OF TOTAL RETAIL SALES IN THE THREE-MONTH PERIOD MARCH-MAY 1986 WITH THOSE IN THE SAME PERIOD 12 MONTHS PREVIOUSLY ARE ALSO GIVEN.

GRAPHS 1 AND 2 DEPICT RESPECTIVELY THE MOVEMENTS OF THE VALUE AND VOLUME INDEXES OF TOTAL RETAIL SALES, INCLUDING THE SEASONALLY ADJUSTED INDEXES AND TRENDS, FROM JANUARY 1983 TO APRIL 1986.

THE REPORT CONTAINING THE ANALYSIS OF THE MAY 1986 SURVEY RESULTS IS NOW ON SALE AT THE GOVERNMENT PUBLICATION SALES CENTRE, GENERAL POST OFFICE BUILDING, CONNAUGHT PLACE, AT \$1 PER COPY.

ENQUIRIES ABOUT THE SURVEY RESULTS MAY BE DIRECTED TO THE WHOLESALE AND RETAIL TRADE STATISTICS SECTION OF THE CENSUS AND STATISTICS DEPARTMENT ON 3-7216024.

/TABLE 1 : .....

TABLE 1 : TOTAL RETAIL SALES

Total Retail Sales for May 1986 (Provisional Figure) = HK\$5 745 million  
for April 1986 (Revised Figure) = HK\$5 578 million

TABLE 2 : VALUE AND VOLUME INDEXES OF RETAIL SALES FOR APRIL AND MAY 1986

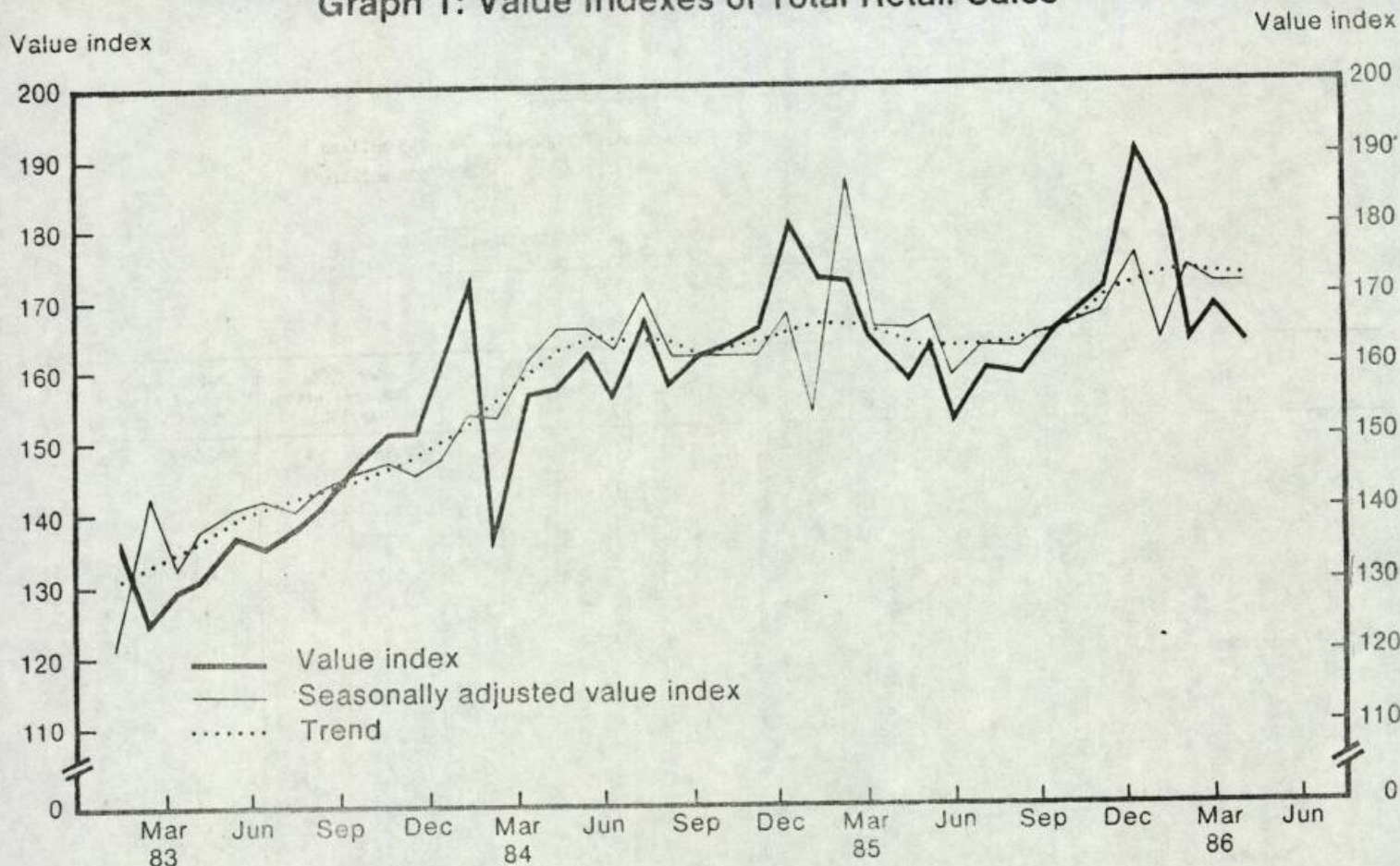
(Monthly average of 1980 = 100)

Item	Index of Retail Sales	April 1986	May 1986	May 1986 compared with April 1986		May 1986 compared with May 1985		March - May 86 compared with March - May 85	
		(Revised figures)	(Provisional figures)	Points	%	Points	%	Points	%
<b>(A) FOR ALL RETAIL TRADES</b>									
	Value	164	169	+ 5	+ 3	+ 5	+ 3	+ 5	+ 3
	Volume	110	113	+ 3	+ 3	*	*	*	*
<b>(B) BY MAJOR TRADE GROUPS</b>									
Foodstuffs, alcoholic drinks and tobacco	Value	184	184	*	*	+ 9	+ 5	+ 7	+ 4
	Volume	120	120	*	*	+ 6	+ 5	+ 5	+ 4
Fuels	Value	175	169	- 6	- 3	- 30	- 15	- 18	- 9
	Volume	124	127	+ 3	+ 2	- 1	*	*	*
Clothing, footwear and allied products	Value	225	238	+ 12	+ 5	+ 36	+ 18	+ 29	+ 15
	Volume	130	135	+ 5	+ 4	+ 12	+ 9	+ 9	+ 7
Consumer durables	Value	152	163	+ 11	+ 7	- 2	- 1	+ 3	+ 2
	Volume	104	110	+ 6	+ 6	- 11	- 9	- 5	- 5
Other consumer goods	Value	148	152	+ 5	+ 3	+ 5	+ 3	+ 4	+ 3
	Volume	102	104	+ 3	+ 3	*	*	- 1	- 1
<b>(C) BY SELECTED TRADES</b>									
Supermarkets	Value	309	325	+ 16	+ 5	- 4	- 1	+ 20	+ 6
	Volume	185	193	+ 8	+ 4	- 5	- 2	+ 10	+ 5
Motor vehicles and parts	Value	98	106	+ 8	+ 8	+ 5	+ 5	+ 6	+ 7
	Volume	52	54	+ 2	+ 5	- 6	- 9	- 3	- 6
Consumer durables, other than motor vehicles and parts	Value	189	202	+ 13	+ 7	- 7	- 3	*	*
	Volume	140	149	+ 9	+ 6	- 14	- 9	- 7	- 4
Department stores	Value	147	147	*	*	+ 1	+ 1	+ 4	+ 3
	Volume	101	101	*	*	- 3	- 2	- 1	- 1

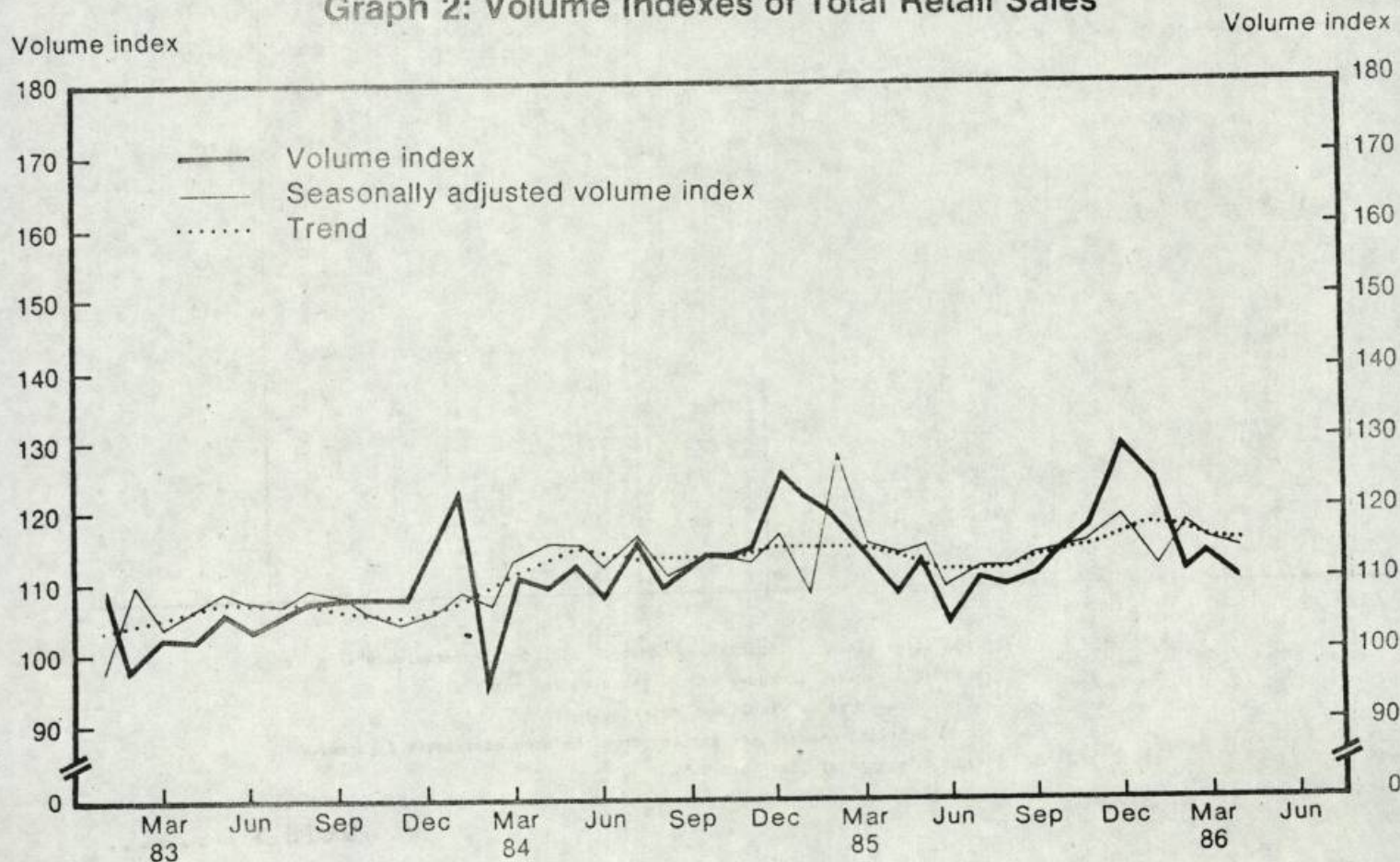
- Notes : 1. "Foodstuffs, alcoholic drinks and tobacco" includes "supermarkets".  
2. "Consumer durables" includes "motor vehicles and parts".  
3. "Other consumer goods" includes "department stores".  
4. Figures denoting changes are derived from the unrounded index figures.  
5. \* denotes change of less than 0.5.

/GRAPH 1 : .....

Graph 1: Value Indexes of Total Retail Sales



Graph 2: Volume Indexes of Total Retail Sales



Notes: (1) Monthly average of 1980 = 100.

(2) The seasonally adjusted value and volume indexes and Henderson trends are compiled using the X-11 variant seasonal adjustment program of the U.S. Bureau of the Census.

THURSDAY, JULY 31, 1986

- 7 -

BAN ON IMPORTS OF GOLD COINS FROM SOUTH AFRICA

\* \* \* \* \*

THE GOVERNOR-IN-COUNCIL DECIDED EARLIER THIS WEEK TO BAN IMPORTS OF GOLD COINS MINTED IN SOUTH AFRICA AND CONSIGNED TO HONG KONG FROM THAT COUNTRY WITH EFFECT FROM AUGUST 8 THIS YEAR.

EXPLAINING THE IMPORT PROHIBITION (SOUTH AFRICA) REGULATIONS 1986, A GOVERNMENT SPOKESMAN SAID THAT THE BAN HAD BEEN IMPOSED AFTER CAREFUL CONSIDERATION OF ALL RELEVANT FACTORS APPLICABLE TO HONG KONG IN THIS REGARD, INCLUDING SIMILAR ACTIONS TAKEN BY OTHER COUNTRIES, PARTICULARLY THE COMMONWEALTH AND LESS DEVELOPED COUNTRIES.

THE SPOKESMAN SAID THAT THE BAN WOULD APPLY TO ALL GOLD COINS MINTED IN SOUTH AFRICA, INCLUDING KRUGERRANDS AND THE NEW PROTEA COINS, AND IMPORTED TO HONG KONG FROM THAT COUNTRY.

LOCAL DEALINGS IN KRUGERRANDS AND OTHER GOLD COINS MINTED IN SOUTH AFRICA AND IMPORTS OF SUCH COINS FROM THIRD COUNTRIES WOULD NOT, HOWEVER, BE AFFECTED.

THE IMPORT PROHIBITION (SOUTH AFRICA) REGULATIONS CONTAIN PROVISIONS FOR THE DIRECTOR OF TRADE TO GRANT A LICENCE FOR THE IMPORT OF SUCH GOLD COINS FROM SOUTH AFRICA IN CERTAIN SPECIAL CIRCUMSTANCES, SUCH AS FOR THOSE WHICH ARE ALREADY ON THEIR WAY TO HONG KONG BEFORE AUGUST 8.

ANYONE WHO CONTRAVENES THE REGULATIONS IS LIABLE TO A FINE OF \$500 000 AND IMPRISONMENT FOR TWO YEARS.

THE SPOKESMAN POINTED OUT THAT BOTH THE VALUE AND MARKET SHARE OF SOUTH AFRICA'S GOLD COINS IN HONG KONG'S IMPORTS HAD DECREASED DRASTICALLY SINCE 1985.

IN 1984, \$1 112 MILLION WORTH OF GOLD COINS, OR 93 PER CENT OF SUCH IMPORTS INTO HONG KONG, WERE FROM SOUTH AFRICA. THE CORRESPONDING FIGURES DROPPED TO \$447 MILLION AND 55 PER CENT RESPECTIVELY IN 1985.

THERE HAS BEEN NO RECORDS OF IMPORTS OF GOLD COINS FROM SOUTH AFRICA IN RECENT MONTHS.

- - - - 0 - - - -

/8 .....

THURSDAY, JULY 31, 1986

- 8 -

DECISIONS ON AIR LICENCES ANNOUNCED  
\* \* \* \* \*

THE AIR TRANSPORT LICENSING AUTHORITY TODAY (THURSDAY) ANNOUNCED ITS DECISIONS ON THE THREE LICENCE APPLICATIONS BY CATHAY PACIFIC AIRWAYS AND THE ONE BY HONG KONG DRAGON AIRLINES WHICH WERE THE SUBJECT OF A PUBLIC INQUIRY STARTING ON JUNE 30.

CATHAY PACIFIC HAS BEEN GRANTED LICENCES TO SERVE AMSTERDAM AND MANCHESTER. DRAGONAIR'S APPLICATION FOR LICENCES TO OPERATE A SERVICE TO LONDON AND ANOTHER TO MANCHESTER AND AMSTERDAM, IN BOTH CASES VIA NEW DELHI OR SHARJAH, HAS BEEN REFUSED.

- - - - 0 - - - -

TEXTILE INDUSTRY MAKES GAINS IN FINISHING  
\* \* \* \* \*

THE TEXTILE INDUSTRY TRAINING BOARD OF THE VOCATIONAL TRAINING COUNCIL IS OPTIMISTIC THAT THE TEXTILE INDUSTRY WILL CONTINUE TO BE A MAJOR ECONOMIC SECTOR IN HONG KONG AND PROVIDE RELIABLE AND ESSENTIAL SUPPORT TO THE CLOTHING INDUSTRY, DESPITE THE DECLINE OF ITS WEAVING AND SPINNING BRANCHES IN THE LAST TWO YEARS.

AS A RESULT OF THE DECLINE OF THE TWO BRANCHES CAUSED BY SLUGGISH BUSINESS, PROTECTIONISM AND STRONG COMPETITION, THE TOTAL WORKFORCE OF THE TEXTILE INDUSTRY DROPPED BY 4 000 FROM 54 000 IN 1983 TO 50 000 IN 1985, ACCORDING TO A SURVEY CONDUCTED BY THE BOARD LAST SEPTEMBER.

HOWEVER, EMPLOYMENT IN THE FINISHING BRANCH OF THE INDUSTRY HAD GROWN FROM 16 000 TO 18 000. THIS REPRESENTED AN ANNUAL INCREASE OF 6.8 PER CENT, A BOARD SPOKESMAN SAID.

THE BOARD NOTED IN ITS SURVEY REPORT THAT THE INCREASED DEMAND FOR DYED YARNS AND FINISHED FABRICS FROM THE LOCAL CLOTHING INDUSTRY AND FROM CHINA HAD CONTRIBUTED TO THE GROWTH OF MANPOWER IN THE FINISHING BRANCH.

THE BOARD CONSIDERED THAT THE FINISHING BRANCH, TOGETHER WITH THE KNITTING BRANCH, WOULD CONTINUE TO HAVE POTENTIAL FOR FURTHER DEVELOPMENT.

IN VIEW OF TECHNOLOGICAL CHANGES, THE BOARD STRESSED THAT THE INDUSTRY MUST INVEST IN MODERN PLANT AND MACHINERY TO IMPROVE PRODUCTIVITY AND QUALITY SO AS TO REMAIN COMPETITIVE.

/+CONCOMITANT .....

+CONCOMITANT WITH THIS, THE INDUSTRY NEEDS INCREASINGLY BETTER TRAINED TECHNICAL MANPOWER,+ THE SPOKESMAN SAID.

THE BOARD FORECAST THAT THE INDUSTRY WOULD NEED TO TRAIN AT LEAST 20 TECHNOLOGISTS, 110 TECHNICIANS AND 390 CRAFTSMEN ANNUALLY FROM 1986 TO 1991 TO COPE BOTH WITH MANPOWER WASTAGE AND WITH GROWTH.

THE SURVEY REPORT ALSO CONTAINS MANY OTHER MANPOWER STATISTICS ON THE INDUSTRY. IT IS ON SALE AT THE GOVERNMENT PUBLICATIONS SALES CENTRE IN CONNAUGHT PLACE, CENTRAL, AT \$24 A COPY.

- - - - 0 - - - -

BANNED HORMONES IN FOOD: PENALTIES SPELT OUT  
\* \* \* \* \*

ANY PERSON SELLING FISH, MEAT OR POULTRY (INCLUDING LIVE POULTRY) CONTAINING ANY OF THE BANNED SYNTHETIC HORMONES WILL BE LIABLE TO A FINE OF \$10 000 AND TO IMPRISONMENT OF SIX MONTHS UNDER THE HARMFUL SUBSTANCES IN FOOD (AMENDMENT) REGULATIONS 1986, WHICH WILL COME INTO EFFECT ON NOVEMBER 1 THIS YEAR.

THE NEW REGULATIONS, TO BE GAZETTED TOMORROW (FRIDAY), ARE DESIGNED FOR THE BETTER PROTECTION OF PUBLIC HEALTH. THEY WILL ENSURE THAT ANYONE SELLING FOOD FOR HUMAN CONSUMPTION WILL HAVE THE RESPONSIBILITY AS TO THE HEALTH ASPECTS OF THE FOOD SOLD.

THE REGULATIONS MAKE IT AN OFFENCE UNDER THE PUBLIC HEALTH AND MUNICIPAL SERVICES ORDINANCE TO SELL, CONSIGN OR DELIVER FOR SALE FOR HUMAN CONSUMPTION, ANY FISH, MEAT OR POULTRY (INCLUDING LIVE POULTRY) WHICH CONTAINS SPECIFIED SYNTHETIC HORMONES.

A SPOKESMAN FOR THE MUNICIPAL SERVICES BRANCH SAID TODAY (THURSDAY) THAT RETAILERS SHOULD INSIST ON WARRANTIES WHEN THEY BUY POULTRY FROM WHOLESALERS OR PRODUCERS.

+IF THIS OCCURS THROUGHOUT THE NETWORK OF SUPPLY, NOT ONLY WILL CONTAMINATED POULTRY BECOME LESS MARKETABLE, BUT HONEST HOLDERS OF WARRANTIES WILL HAVE A DEFENCE UNDER SECTION 71 OF THE ORDINANCE,+ HE SAID.

HE ADDED THAT UNDER THE REVISED REGULATIONS, MANY RETAILERS AND WHOLESALERS WILL WISH TO ASK THEIR SUPPLIERS OR IMPORTERS TO PROVIDE THEM WITH WRITTEN CERTIFICATIONS TO THE EFFECT THAT EACH CONSIGNMENT OF LIVE POULTRY OR POULTRY MEAT IS FREE FROM HORMONE RESIDUES.

THE THREE MONTHS PERIOD BEFORE THE REGULATIONS COME INTO EFFECT IS INTENDED TO ALLOW THE TRADE SUFFICIENT TIME TO COMPLY WITH THE NEW REQUIREMENTS.

- - - - 0 - - - -

THURSDAY, JULY 31, 1986

- 10 -

ISLAND COUNTRY PARKS PERMANENTLY DESIGNATED  
\* \* \* \*

THE GOVERNMENT ANNOUNCED TODAY (THURSDAY) THE LIFTING OF THE SEVEN-YEAR LIMITATION OF THE DESIGNATION OF THE POK FU LAM, SHEK O AND QUARRY BAY EXTENSION OF TAI TAM COUNTRY PARKS, THREE OF THE FIVE COUNTRY PARKS ON HONG KONG ISLAND.

THE DECISION WAS TAKEN BY THE EXECUTIVE COUNCIL EARLIER THIS WEEK FOLLOWING A REVIEW OF THE PRESENT POSITION OF THE THREE COUNTRY PARKS.

AMONG THE LAST PARKS PUT FORWARD FOR DESIGNATION UNDER THE COUNTRY PARKS PROGRAMME, THE THREE WERE FIRST DESIGNATED IN SEPTEMBER 1979 FOR A PERIOD OF SEVEN YEARS.

A SPOKESMAN FOR THE AGRICULTURE AND FISHERIES DEPARTMENT SAID THAT WHEN THEIR DESIGNATION WAS CONSIDERED IN 1979, PREPARATION OF A DEVELOPMENT STRATEGY FOR THE TERRITORY WAS STILL AT AN EARLY STAGE, AND THE POTENTIAL FOR DEVELOPMENT ON HONG KONG ISLAND HAD NOT BEEN INVESTIGATED IN DETAIL.

+THE REASONS FOR THE SEVEN-YEAR DESIGNATION WERE BECAUSE THERE WAS CONCERN THAT THESE PARKS, BEING NEAR TO BUILT-UP AREAS, WOULD UNDULY CONSTRAIN RESIDENTIAL, HIGHWAY AND OTHER URBAN RECREATIONAL DEVELOPMENTS,+ THE SPOKESMAN SAID.

SINCE THEIR DESIGNATION IN 1979, THE THREE COUNTRY PARKS HAVE BEEN WELL UTILISED BY THE PUBLIC AND DEVELOPMENT OF RECREATIONAL FACILITIES HAS GONE AHEAD, PARTICULARLY IN THE QUARRY BAY EXTENSION OF THE TAI TAM COUNTRY PARK, WHERE THE PARK IS CLOSE TO SUBSTANTIAL EXISTING AND FUTURE RESIDENTIAL AREAS.

THE SPOKESMAN SAID THAT RECREATIONAL DEVELOPMENT OF THE POK FU LAM COUNTRY PARK HAD BEEN AT A SLIGHTLY LOWER LEVEL IN VIEW OF ITS JOINT STATUS AS COUNTRY PARK AND SPECIAL NATURE CONSERVATION AREA.

THE SHEK O COUNTRY PARK IS THE LEAST DEVELOPED OF THE THREE IN RECREATIONAL TERM AND REMAINS AN UNSPOILT SCENIC AREA OF NATURE CONSERVATION INTEREST.

+WITH THE GROWTH IN POPULATION IN THE EASTERN PARTS OF THE ISLAND, AND IMPROVEMENTS IN PUBLIC TRANSPORT, IT IS LIKELY THAT THE SHEK O COUNTRY PARK WILL ALSO COME IN FOR HEAVIER RECREATIONAL USE,+ THE SPOKESMAN SAID.

IN REVIEWING THE DESIGNATION OF THE THREE COUNTRY PARKS, ALL INTERESTED DEPARTMENTS WHO HAVE BEEN CONSULTED HAVE ADVISED THAT THE TIME LIMITATION SHOULD BE LIFTED AND THAT THEY SHOULD BE PERMANENTLY DESIGNATED AS COUNTRY PARKS, HE ADDED.

- - - - 0 - - - -

THURSDAY, JULY 31, 1986

- 11 -

YAN OI TONG PRAISED FOR COMMUNITY SERVICES

\* \* \* \* \*

THE REGIONAL SECRETARY FOR THE NEW TERRITORIES, DR JAMES HAYES, TODAY (THURSDAY) PRAISED THE YAN OI TONG, A CHARITABLE ORGANISATION, FOR ITS PERSISTENCE IN THE PROVISION OF COMMUNITY SERVICES TO RESIDENTS IN TUEN MUN.

+ALBEIT THE CHANGES IN SOCIETY WITH THE PASSAGE OF TIME, THE YAN OI TONG WITH ITS LONG TRADITION, WAS ABLE TO CONTINUE PROVIDING VARIOUS SERVICES IN THE SPIRIT OF MUTUAL CARE AND READINESS TO HELP,+ HE SAID.

SPEAKING AT THE INAUGURATION CEREMONY OF THE SEVENTH TERM OFFICE-BEARERS OF THE YAN OI TONG BOARD OF DIRECTORS, DR HAYES SAID THAT WITH CHANGING TIMES AND THE EVOLUTION OF INDUSTRIAL NEW TOWNS SOME TRADITIONAL LOCAL ORGANISATIONS HAVE DISAPPEARED.

+IT WAS INDEED A MIRACLE THAT THE YAN OI TONG, AS ONE OF THE EXCEPTIONS, SURVIVED AND HAD EMERGED AS A MODEL FOR SIMILAR ORGANISATIONS OF ITS TIME TO FOLLOW,+ HE ADDED.

THIS WAS MADE POSSIBLE WITH THE HEALTHY ORGANISATIONAL SET-UP AND THE FAR-SIGHTEDNESS OF YAN OI TONG'S BOARD OF DIRECTORS WHICH ENABLED THE INSTITUTION TO DEVELOP AND EXPAND ITS SERVICES TO COPE WITH URBANISATION AND INDUSTRIALISATION OF THE NEW TOWNS.

+OVER THE YEARS, THE YAN OI TONG HAD CONTRIBUTED MUCH TO RESIDENTS BY PROVIDING A COMPREHENSIVE RANGE OF SERVICES SUCH AS MEDICAL CARE, EDUCATIONAL AND WELFARE SERVICES, AND RECREATION AND SPORTS FACILITIES,+ DR HAYES SAID.

+THE TONG OPERATES CLINICS, KINDERGARTENS, PRIMARY AND SECONDARY SCHOOLS AND VARIOUS OTHER FACILITIES IN THE DEVELOPING NEW TOWN OF TUEN MUN,+ HE ADDED.

DR HAYES NOTED THAT FUTURE PLANS OF THE TONG INCLUDE EXPANDING THE SCOPE OF SERVICES FOR THE ELDERLY AND YOUNG CHILDREN.

- - - - 0 - - - -

NEW LANDLORD AND TENANT ORDINANCE IN OPERATION

\* \* \* \* \*

THE LANDLORD AND TENANT (CONSOLIDATION)(AMENDMENT) ORDINANCE 1986, GAZETTED ON JULY 4, COMES INTO OPERATION TOMORROW (FRIDAY).

HOWEVER, THE PROVISION UNDER PART II RELATING TO THE RAISING OF THE MINIMUM RENT FROM 55 PER CENT TO 60 PER CENT OF THE PREVAILING MARKET RENT IN THE RENT INCREASE SYSTEM WILL NOT BECOME OPERATIVE UNTIL DECEMBER 19.

/A SPOKESMAN .....

A SPOKESMAN OF THE RATING AND VALUATION DEPARTMENT SAID THAT THE MAIN AMENDMENT TO TAKE EFFECT IS THE RAISING OF THE PERMITTED RENT OF PRE-WAR DOMESTIC PREMISES FROM 27 TO 30 TIMES THE STANDARD RENT.

THERE ARE ALSO SOME TECHNICAL AMENDMENTS UNDER PARTS III AND VI TO UPDATE THE MONETARY LIMITS IN THE EXISTING SIMPLIFIED PROCEDURES FOR RECOVERY OF SMALL PREMISES IN CERTAIN CIRCUMSTANCES.

EXPLANATORY PAMPHLETS ON THE PROVISIONS OF THE ORDINANCE, BOTH IN ENGLISH AND CHINESE, HAVE BEEN PUBLISHED. THESE ARE NOW AVAILABLE, FREE OF CHARGE, FROM THE RATING AND VALUATION DEPARTMENT, 17TH FLOOR, HENNESSY CENTRE, 500 HENNESSY ROAD, OR DISTRICT OFFICES.

THE SPOKESMAN ADDED THAT ANYONE HAVING ENQUIRIES ON THE PROVISIONS OF THE ORDINANCE CAN OBTAIN ASSISTANCE FROM RENT OFFICERS OF THE DEPARTMENT (TEL: 5-7957888) OR STAFF OF DISTRICT OFFICES.

- - - - 0 - - - -

DB MEMBERS VISIT CONTAINER TERMINAL  
\* \* \* \* \*

KWUN TONG DISTRICT BOARD MEMBERS YESTERDAY (WEDNESDAY) AFTERNOON VISITED THE MODERN TERMINALS LIMITED (MTL) CONTAINER FACILITY IN KWAI CHUNG TO GAIN A BETTER UNDERSTANDING OF ITS OPERATIONS.

THE VISIT WAS PART OF A CONTINUING PROGRAMME FOR BOARD MEMBERS TO FAMILIARISE THEMSELVES WITH THE WORK AND OPERATIONS OF TRAFFIC AND TRANSPORT AGENCIES.

LED BY KWUN TONG DISTRICT BOARD CHAIRMAN, MR LAM HANG-FAI, AND DISTRICT OFFICER, MR EDDY CHAN, THE PARTY WAS MET BY THE MTL OPERATIONS MANAGER, MR C.Y. HO, WHO GAVE AN AUDIO-VISUAL PRESENTATION ON CONTAINER OPERATIONS.

THE MANAGING DIRECTOR OF THE MTL, MR MARK LEESE, ALSO BRIEFED MEMBERS ON DEVELOPMENT OF THE KWAI CHUNG CONTAINER TERMINAL.

AFTER THE BRIEFINGS, THE PARTY TOURED THE TERMINAL CONTROL TOWER, THE CONTAINER FREIGHT STATION OPERATION AND THE TERMINAL MAINTENANCE FACILITIES.

- - - - 0 - - - -

THURSDAY, JULY 31, 1986

- 13 -

NEW DO GETTING TO KNOW TAI PO  
\* \* \* \*

NEWLY-APPOINTED TAI PO DISTRICT OFFICER, MR JOHN BURRETT, HAS BEGUN A SERIES OF FAMILIARISATION VISITS TO LEARN MORE ABOUT THE DISTRICT, AND TODAY (THURSDAY) HE VISITED TWO RURAL COMMITTEES AND THE MAN MO TEMPLE.

MR BURRETT FIRST VISITED THE TAI PO RURAL COMMITTEE WHERE HE WAS MET BY THE CHAIRMAN, MR HO YUNG-SANG, AND EXECUTIVE COMMITTEE MEMBERS, AND WAS BRIEFED ON THE COMMITTEE'S WORK.

HE THEN CALLED ON THE TSAT YEUK RURAL COMMITTEE WHOSE TEMPORARY OFFICE IS SITUATED IN THE MAN MO TEMPLE. AFTER A MEETING WITH COMMITTEE MEMBERS, MR BURRETT LOOKED THROUGH THE TEMPLE.

MR BURRETT HAS ALREADY BEEN TO LAM TSUEN RIVER, ISLAND HOUSE, VARIOUS COMMUNITY CENTRES AND VILLAGES.

HE WILL BE VISITING THE TAI PO MERCHANTS ASSOCIATION, THE SAI KUNG NORTH RURAL COMMITTEE AND THE TAI PO FRATERNAL SOCIETIES ASSOCIATION IN THE NEAR FUTURE.

- - - - 0 - - - -

SECOND LITTERBUG BLITZ ON THE WAY  
\* \* \* \*

A FOLLOW-UP PROSECUTION SWEEP OF FIVE URBAN COUNCIL BEACHES WILL TAKE PLACE THIS SATURDAY (AUGUST 2).

URBAN SERVICES DEPARTMENT STAFF WILL BE LOOKING FOR LITTERBUGS ON DEEP WATER BAY, REPULSE BAY, SHEK O, STANLEY AND BIG WAVE BAY.

- - - - -

NOTE TO EDITORS:

YOU ARE INVITED TO COVER THE ACTION ON DEEP WATER BAY WHERE URBAN COUNCILLOR, MR JOSEPH CHAN, WILL BE OVERSEEING THE OPERATION BEGINNING AT 2 PM.

TRANSPORT TO THE BEACH, A VAN UC18, WILL BE LEAVING FROM THE URBAN COUNCIL CHAMBERS AT EDINBURGH PLACE BY 1 PM.

- - - - 0 - - - -

THURSDAY, JULY 31, 1986

- 14 -

DETAILS OF SPORTS SCHEME  
\* \* \* \*

A PRESS CONFERENCE WILL BE HELD TOMORROW (FRIDAY) TO ANNOUNCE  
DETAILS OF THE TSUEN WAN SPORTS NUTURE SCHEME.

IT WILL BE HELD AT NOON IN THE MAXIM'S CHINESE RESTAURANT  
AT LUK YUEN SUN CHUEN (MTR STATION) IN TSUEN WAN.

THE SPORTS SCHEME IS ORGANISED BY THE TSUEN WAN DISTRICT  
BOARD. MEMBERS AND COACHES OF THE EXECUTIVE COMMITTEE OF THE  
SPORTS NUTURE SCHEME WILL ATTEND THE PRESS CONFERENCE.

- - - -

NOTE TO EDITORS:

YOU ARE INVITED TO COVER THE PRESS CONFERENCE.

- - - - 0 - - - -

OFFICES ON THE MOVE  
\* \* \* \*

THE HEADQUARTERS AND HONG KONG OFFICE OF THE LEGAL AID  
DEPARTMENT WHICH IS AT PRESENT LOCATED AT SINCERE BUILDING,  
WILL BE MOVING TO THE QUEENSWAY GOVERNMENT OFFICES ON SATURDAY  
(AUGUST 2) AND SUNDAY.

THE FOUR DIVISIONS OF THE HONG KONG OFFICE - THE  
APPLICATION AND GENERAL ADMINISTRATION DIVISION, THE GENERAL  
AND MATRIMONIAL LITIGATION DIVISION, THE PERSONAL INJURIES  
LITIGATION DIVISION AND THE CRIMINAL LITIGATION DIVISION -  
WILL BE OCCUPYING THE 24TH, 25TH, 26TH AND 27TH FLOOR IN THE  
NEW BUILDING.

FOR ENQUIRIES, TELEPHONE 5-8623030.

- - - - 0 - - - -

PROHIBITED ZONE IN MOUNT DAVIS ROAD  
\* \* \* \* \*

FROM 10 AM ON SATURDAY (AUGUST 2), NO VEHICLE OTHER THAN  
FRANCHISED BUSES WILL BE ALLOWED TO ENTER THE NORTHERN KERBSIDE  
LANE OF MOUNT DAVIS ROAD FROM ITS JUNCTION WITH VICTORIA ROAD  
TO A POINT ABOUT 35 METRES EAST OF THE SAME JUNCTION 24 HOURS  
DAILY.

- - - - 0 - - - -

THURSDAY, JULY 31, 1986

- 15 -

NEW GREEN MINIBUS ROUTE INTRODUCED  
\* \* \* \* \*

A NEW GREEN MINIBUS CIRCULAR ROUTE, NO. 52, PLYING BETWEEN CHUK YUEN ESTATE IN WONG TAI SIN AND SAN PO KONG WILL BE INTRODUCED FROM TOMORROW (FRIDAY).

THE SERVICE IS DESIGNED TO MEET THE PASSENGER DEMAND FROM CHUK YUEN ESTATE AND TO PROVIDE A CONVENIENT LINK BETWEEN THE ESTATE AND THE INDUSTRIAL AREA IN SAN PO KONG.

THE ROUTE WILL OPERATE FROM 7 AM TO 10 PM AT AN EIGHT-MINUTE INTERVAL. THE FARE WILL BE \$1.5 PER SINGLE JOURNEY.

- - - - 0 - - - -

TEMPORARY ROAD CLOSURE  
\* \* \* \* \*

TUNG CHAU STREET IN TAI KOK TSUI, BETWEEN PRINCE EDWARD ROAD WEST AND WALNUT STREET, WILL BE CLOSED FROM MIDNIGHT TO 6 AM FROM AUGUST 2 (SATURDAY) TO AUGUST 5 TO FACILITATE DRAINAGE WORK ALONG TUNG CHAU STREET.

MOTORISTS ON PRINCE EDWARD ROAD WEST HEADING FOR TUNG CHAU STREET NORTHBOUND ARE ADVISED TO USE SYCAMORE STREET AND TAI KOK TSUI ROAD.

- - - - 0 - - - -