



# DAILY INFORMATION BULLETIN

ISSUED BY GOVERNMENT INFORMATION SERVICES  
BEACONSFIELD HOUSE, HONG KONG. TEL.: 842 8777

FRIDAY, MARCH 27, 1992

<u>CONTENTS</u>	<u>PAGE NO.</u>
CONSUMER PRICE INDICES FOR FEBRUARY .....	1
HOSPITAL AND CLINIC FEES TO BE ADJUSTED FROM APRIL .....	7
BAN ON COMMERCIAL ORGAN TRADING AND TRANSPLANTS .....	8
SECOND QUARTER RATES NOTICES .....	9
SHEK KONG ENQUIRY COMPLETED .....	10
BILL TO BETTER DEFINE BUILDING AUTHORITY'S POWERS GAZETTED .....	10
MORE PROTECTION AGAINST CHILD ABUSE .....	11
PROVISIONAL TRADE FIGURES FOR FEBRUARY .....	12
WAYS TO IMPROVE MEDICAL SERVICES FOR HK .....	15
WORKSHOPS ON TAXI POLICY REVIEW .....	16
TOWN PLANNING BOARD APPOINTMENTS ANNOUNCED .....	17
WUN SHA STREET PLAYGROUND TO BE UPGRADED .....	18
TENDERS INVITED FOR SERVICE RESERVOIR WORKS .....	19
PROPOSALS TO ALTER PROPERTY RATEABLE VALUE INVITED .....	19
TOURISM VITAL TO HONG KONG .....	20
INSHORE WORKS FOR AIRPORT-RELATED PROJECTS .....	20
FILM AND TV CO-PRODUCTIONS WITH CANADA ENCOURAGED .....	21
NON-GOVT GROUPS PLAY IMPORTANT ROLE IN ELDERLY SERVICES .....	22
INVITATION TO ENROL IN CONTRACTOR LIST FOR WASTE RECYCLING FACILITIES PROVISION .....	23
MACAU DELEGATION TO SEE YOUTH SERVICES IN HK .....	24
HONG KONG GOVERNMENT EXCHANGE FUND MONEY MARKET OPERATIONS .....	25

- 1 -

## CONSUMER PRICE INDICES FOR FEBRUARY

\* \* \* \* \*

THE CONSUMER PRICE INDEX (A) IN FEBRUARY 1992 WAS 10.4% HIGHER THAN IN FEBRUARY 1991, ACCORDING TO THE FIGURES RELEASED TODAY (FRIDAY) BY THE CENSUS AND STATISTICS DEPARTMENT.

THE CPI(B) AND THE HANG SENG CPI WERE HIGHER BY 10.1% AND 9.8% RESPECTIVELY.

THE COMPOSITE CPI, WHICH WAS COMPILED BASED ON THE COMBINED EXPENDITURE PATTERN OF HOUSEHOLDS COVERED BY THE THREE CPIS, SHOWED AN INCREASE OF 10.1% IN FEBRUARY 1992 OVER THE SAME MONTH IN 1991.

THESE YEAR-ON-YEAR RATES OF INCREASE IN THE CPIS WERE GENERALLY LOWER THAN THOSE IN JANUARY 1992.

COMPARING FEBRUARY 1992 WITH FEBRUARY 1991, RELATIVELY SLOWER INCREASES IN PRICES WERE RECORDED FOR FUEL AND LIGHT (0.3% IN CPI(A) AND 0.1% IN CPI(B)); DURABLE GOODS (2.2% AND 2.0%); MISCELLANEOUS GOODS (6.7% AND 5.8%); AND CLOTHING AND FOOTWEAR (6.9% AND 6.5%).

MEANWHILE, RELATIVELY FASTER INCREASES IN PRICES WERE RECORDED FOR FOOD (EXCLUDING RESTAURANT MEALS) (10.3% IN CPI(A) AND 9.9% IN CPI(B)); TRANSPORT (10.6% AND 9.6%); SERVICES (10.6% AND 10.4%); HOUSING (11.0% AND 11.8%); MEALS AT RESTAURANTS (12.3% AND 12.1%); AND ALCOHOLIC DRINKS AND TOBACCO (33.7% AND 27.2%).

COMPARING FEBRUARY 1992 WITH JANUARY 1992, THE CPI(A) WAS HIGHER BY 1.8%, THE CPI(B) BY 1.6%, AND THE HANG SENG CPI BY 1.4%.

THIS COMPARISON IS, HOWEVER, AFFECTED BY SEASONAL FACTORS.

THE INCREASES IN THE INDICES WERE MAINLY DUE TO HIGHER PRICES OF FRESH SEA PRODUCTS, FRESH FRUIT, PORK AND LIVE POULTRY AND HIGHER CHARGES FOR HAIRDRESSING AROUND THE LUNAR NEW YEAR.

MOREOVER, CHARGES FOR MEALS AT RESTAURANTS, TAXI FARES, AND RENT FOR SOME PRIVATE HOUSING UNITS ALSO INCREASED IN FEBRUARY. ON THE OTHER HAND, RETAIL PRICES OF FRESH VEGETABLES RECORDED A DECREASE.

FOR THE THREE MONTHS ENDED FEBRUARY 1992, THE CPI(A) WAS, ON AVERAGE, HIGHER BY 10.4% THAN IN THE THREE MONTHS ENDED FEBRUARY 1991. THE CORRESPONDING FIGURE WAS 10.2% FOR CPI(B).

FOR THE 12 MONTHS ENDED FEBRUARY 1992, THE CPI(A) WAS, ON AVERAGE, HIGHER BY 11.8% THAN IN THE PRECEDING 12-MONTH PERIOD. THE CORRESPONDING FIGURE WAS 11.4% FOR CPI(B).

ON A SEASONALLY ADJUSTED BASIS, THE CPI(A) AND CPI(B) INCREASED AT AN AVERAGE RATE OF 1.0% AND 0.9% RESPECTIVELY PER MONTH DURING THE THREE MONTHS ENDED FEBRUARY 1992.

/THESE RATES .....

THESE RATES WERE HIGHER THAN THE CORRESPONDING RATES OF INCREASE RECORDED DURING THE THREE MONTHS ENDED NOVEMBER 1991, AT 0.6% FOR CPI(A) AND 0.7% FOR CPI(B).

THIS RISE WAS MAINLY DUE TO HIGHER PRICES OF FRESH VEGETABLES, HIGHER CHARGES FOR MEALS AT RESTAURANTS AND HIGHER RENTS FOR PRIVATE DWELLINGS, WHICH ACCOUNTED FOR OVER 60% OF THE INCREASES RECORDED IN THE INDICES FOR THE MONTH OF FEBRUARY.

#### THE CONSUMER PRICE INDEX REPORT

-----

MORE DETAILS ARE GIVEN IN THE "CONSUMER PRICE INDEX REPORT" FOR FEBRUARY 1992, WHICH IS AVAILABLE AT \$9.0 PER COPY FROM THE GOVERNMENT PUBLICATIONS SALES CENTRE, GROUND FLOOR, GENERAL POST OFFICE BUILDING, CONNAUGHT PLACE, HONG KONG; OR FROM THE CENSUS AND STATISTICS DEPARTMENT, 19TH FLOOR, WANCHAI TOWER 1, 12 HARBOUR ROAD, WAN CHAI, HONG KONG; OR FROM THE INFORMATION SERVICES DEPARTMENT, FRENCH MISSION BUILDING, 1 BATTERY PATH, HONG KONG FOR LOCAL AND OVERSEAS MAILINGS.

FOR ENQUIRIES ABOUT THE INDICES, PLEASE CALL THE CONSUMER PRICE INDEX SECTION OF THE CENSUS AND STATISTICS DEPARTMENT ON TEL. 805 6403.

DETAILS REGARDING THE HANG SENG CPI ARE CONTAINED IN THE HANG SENG CPI REPORT ISSUED BY THE ECONOMIC RESEARCH DEPARTMENT OF HANG SENG BANK LTD.

TABLE 1: CONSUMER PRICE INDICES AND RATES OF INCREASE FOR FEBRUARY 1992

-----

(OCT. 89 - SEP. 90 = 100)

COMPONENT	CPI(A)		CPI(B)		HANG SENG CPI		COMPOSITE CPI	
	INDEX FOR FEB.92	% CHANGE OVER FEB.91	INDEX FOR FEB.92	% CHANGE OVER FEB.91	INDEX FOR FEB.92	% CHANGE OVER FEB.91	INDEX FOR FEB.92	% CHANGE OVER FEB.91
FOOD	123.8	+11.3	124.2	+11.2	122.0	+9.9	123.6	+11.0
MEALS BOUGHT AWAY FROM HOME	126.1	+12.3	125.9	+12.1	121.6	+9.5	125.1	+11.6
FOOD, EXCLUDING MEALS BOUGHT AWAY FROM HOME	121.5	+10.3	121.8	+9.9	122.7	+10.5	121.8	+10.2

/HOUSING .....

HOUSING	123.9	+11.0	124.3	+11.8	125.9	+11.1	124.7	+11.4
FUEL AND LIGHT	113.2	+0.3	112.6	+0.1	113.1	+0.3	113.0	+0.2
ALCOHOLIC DRINKS AND TOBACCO	146.2	+33.7	140.1	+27.2	137.3	+24.1	142.8	+30.1
CLOTHING AND FOOTWEAR	109.3	+6.9	109.5	+6.5	116.5	+14.2	111.8	+9.2
DURABLE GOODS	105.9	+2.2	105.1	+2.0	107.3	+4.5	106.0	+2.8
MISCELLANEOUS GOODS	113.2	+6.7	111.7	+5.8	110.9	+5.1	112.0	+6.0
TRANSPORT	122.0	+10.6	122.1	+9.6	123.3	+8.4	122.4	+9.6
SERVICES	125.0	+10.6	123.5	+10.4	120.1	+9.1	123.0	+10.1
ALL ITEMS	121.8	+10.4	121.2	+10.1	121.0	+9.8	121.4	+10.1

THE 1989/90-BASED CONSUMER PRICE INDICES ARE BASED ON THE EXPENDITURE PATTERNS DERIVED FROM THE 1989/90 HOUSEHOLD EXPENDITURE SURVEY.

THE CPI(A) IS BASED ON THE EXPENDITURE PATTERN OF ABOUT 50% OF URBAN HOUSEHOLDS IN HONG KONG, WHICH HAD AN AVERAGE MONTHLY EXPENDITURE OF \$2,500-\$9,999 A MONTH IN 1989/90.

THE CPI(B) IS BASED ON THE EXPENDITURE PATTERN OF THE NEXT 30% OF URBAN HOUSEHOLDS, WHICH HAD AN AVERAGE MONTHLY EXPENDITURE OF \$10,000-\$17,499 IN THE SAME PERIOD.

THE HANG SENG CPI IS BASED ON THE EXPENDITURE PATTERN OF THE NEXT 10% OF URBAN HOUSEHOLDS, WHICH HAD AN AVERAGE MONTHLY EXPENDITURE OF \$17,500-\$37,499 IN 1989/90.

WHEREAS THE CPI(A), CPI(B) AND HANG SENG CPI ARE BASED ON THE EXPENDITURE PATTERNS OF GROUPS OF HOUSEHOLDS WITH DIFFERENT MAGNITUDES OF HOUSEHOLD EXPENDITURE, THE COMPOSITE CPI IS COMPILED BASED ON THE EXPENDITURE PATTERN OF ALL THESE HOUSEHOLDS TAKEN TOGETHER.

THUS, WHILE THE CPI(A), CPI(B) AND HANG SENG CPI SHOW THE IMPACT OF CONSUMER PRICE CHANGES ON DIFFERENT GROUPS OF HOUSEHOLDS, THE COMPOSITE CPI SHOWS THE IMPACT OF CONSUMER PRICE CHANGES ON THE HOUSEHOLD SECTOR GENERALLY.

TABLE 2: CONSUMER PRICE INDICES FOR OCT. 1990 - FEB. 1992

(OCT. 89 - SEP. 90 = 100)

YEAR/MONTH	CPI(A)	CPI(B)	HANG SENG CPI	COMPOSITE CPI
1990 OCT	105.8	105.9	106.7	106.1
NOV	106.5	106.7	107.8	106.9
DEC	107.4	107.6	108.1	107.7
1991 JAN	108.3	108.4	108.6	108.4
FEB	110.3	110.1	110.2	110.2
MAR	111.9	111.1	110.7	111.3
APR	113.9	113.0	112.0	113.1
MAY	114.0	113.6	113.4	113.7
JUN	114.6	114.1	113.9	114.2
JUL	115.4	114.8	113.9	114.8
AUG	116.0	115.3	114.6	115.4
SEP	116.8	116.1	115.8	116.3
OCT	117.2	116.8	117.4	117.1
NOV	117.7	117.6	118.7	117.9
DEC	118.1	118.3	118.5	118.3
1992 JAN	119.7	119.3	119.4	119.5
FEB	121.8	121.2	121.0	121.4

Chart 1 Year-on-year Rates of Increase  
in CPI(A)

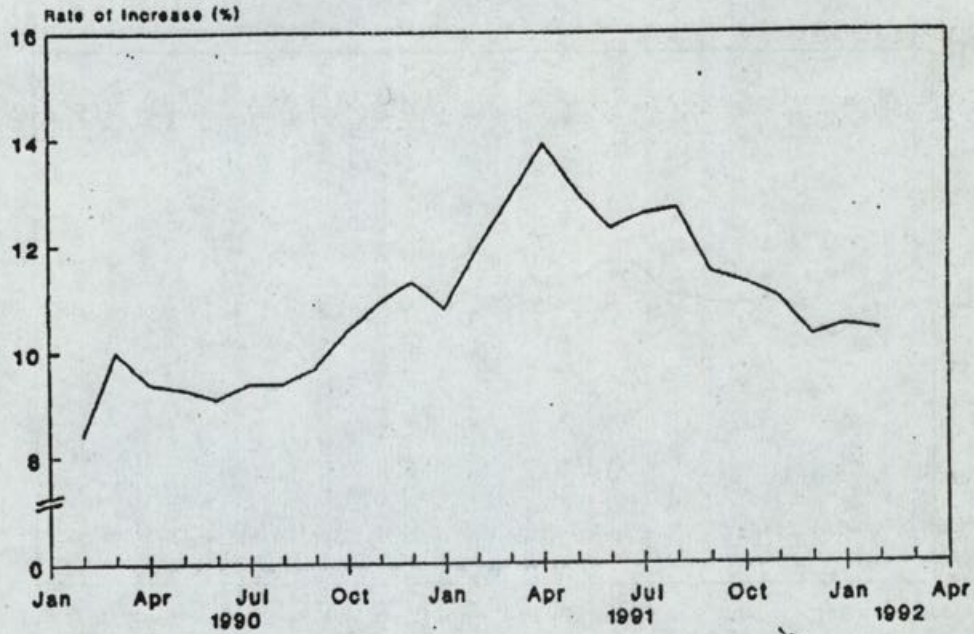
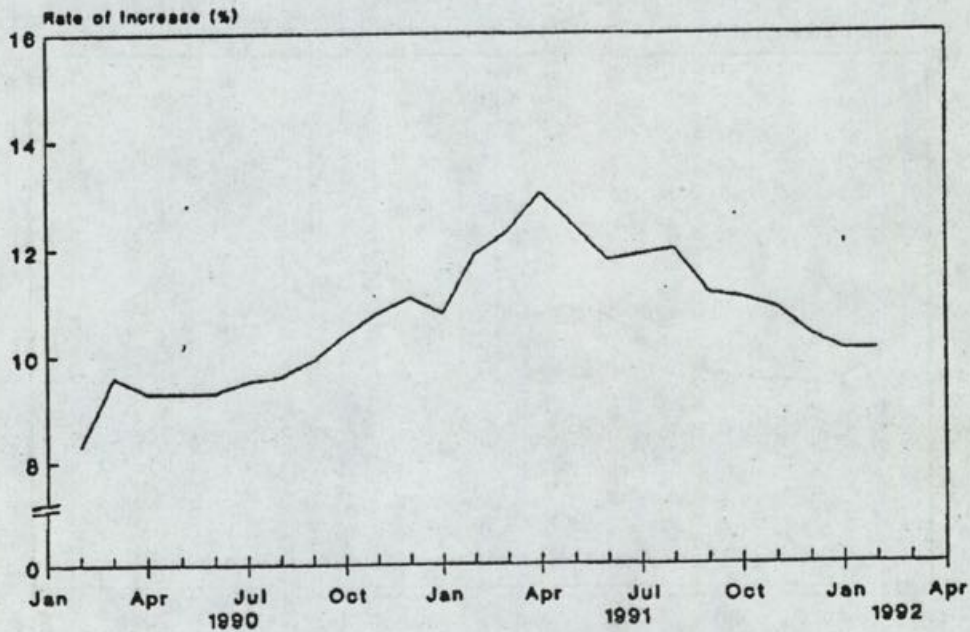


Chart 2 Year-on-year Rates of Increase  
in CPI(B)



/Chart 3 .....

Chart 3 Year-on-year Rates of Increase in Hang Seng CPI

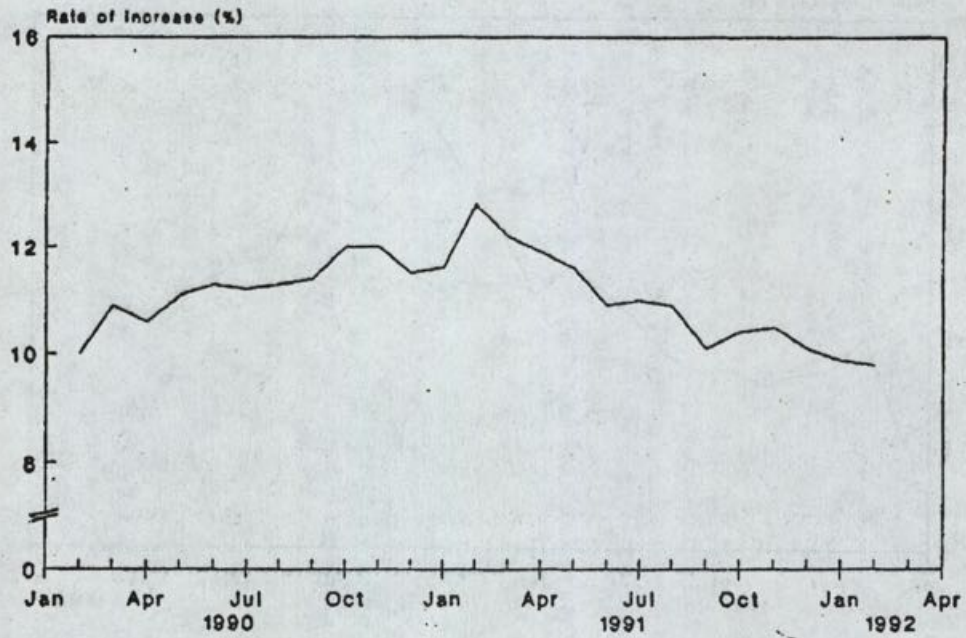
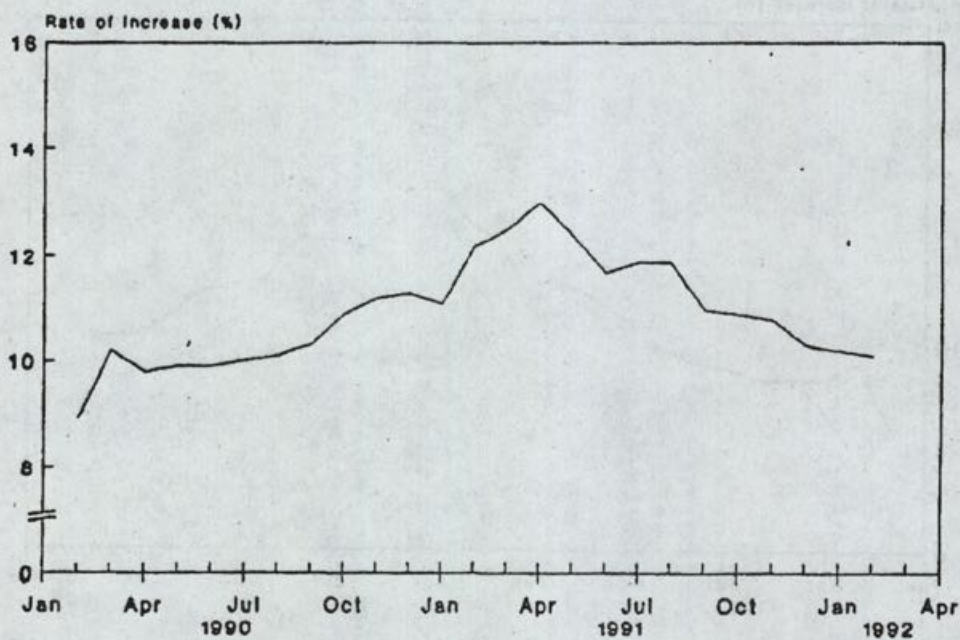


Chart 4 Year-on-year Rates of Increase in Composite CPI



## HOSPITAL AND CLINIC FEES TO BE ADJUSTED FROM APRIL

\* \* \* \* \*

THE FEES AND CHARGES AT FORMER GOVERNMENT HOSPITALS NOW UNDER THE MANAGEMENT OF THE HOSPITAL AUTHORITY (HA) AND GOVERNMENT CLINICS UNDER THE DEPARTMENT OF HEALTH WILL BE ADJUSTED WITH EFFECT FROM WEDNESDAY (APRIL 1) IN ACCORDANCE WITH CURRENT POLICY.

ANNOUNCING THIS TODAY (FRIDAY), A GOVERNMENT SPOKESMAN SAID THE FEES AND CHARGES FOR SERVICES AT SOME PUBLIC HOSPITALS, NAMELY FORMER GOVERNMENT HOSPITALS NOW UNDER HA, AND GOVERNMENT CLINICS ARE REVIEWED ANNUALLY TO REFLECT INCREASED COST FOR PROVISION OF MEDICAL SERVICES.

THE CURRENT LEVELS OF FEES AND CHARGES WERE INTRODUCED IN 1990, SOME TWO YEARS AGO.

THERE HAS BEEN NO REVISION SINCE THEN DUE TO THE MORATORIUM ON GOVERNMENT FEES AND CHARGES WHICH EXPIRED ON FEBRUARY 29 THIS YEAR.

THE SPOKESMAN SAID THE NEW RATES WERE CALCULATED BY THE HOSPITAL AUTHORITY AND THE DEPARTMENT OF HEALTH.

THE SECRETARY FOR HEALTH AND WELFARE WAS SATISFIED THAT THE CALCULATION WAS CONSISTENT WITH THE ESTABLISHED METHODOLOGY.

"AT THE NEW RATES, THE SERVICES CONTINUE TO BE HEAVILY SUBSIDISED BY PUBLIC FUNDS," THE SPOKESMAN SAID.

"THE NEW CHARGE FOR ATTENDANCE AT GENERAL OUT-PATIENT CLINICS IS \$21 COMPARED WITH THE ACTUAL COST OF \$111, AND THAT FOR A BED IN A PUBLIC WARD IS \$43 COMPARED WITH THE AVERAGE BED COST OF \$1,312 PER DAY."

THE SPOKESMAN POINTED OUT THAT IN ACCORDANCE WITH EXISTING POLICY, FULL OR PARTIAL REMISSION OF CHARGES WAS AVAILABLE TO PATIENTS WHO ARE IN GENUINE HARDSHIP AND CANNOT AFFORD TO PAY.

THE GOVERNMENT IS COMMITTED TO THE POLICY THAT NO ONE SHOULD BE PREVENTED, THROUGH LACK OF MEANS, FROM GETTING ADEQUATE MEDICAL TREATMENT.

DETAILS OF THE NEW FEES AND CHARGES ARE PUBLISHED FOR GENERAL INFORMATION IN TODAY'S GAZETTE. THE MAIN FEATURES ARE DESCRIBED BELOW:

	PRESENT FEE	NEW FEE
	-----	-----
IN-PATIENT (PER BED DAY)	(\$)	(\$)
-----		
- PUBLIC WARD	34	43
- PRIVATE WARD		
1ST CLASS	1,570	2,055
2ND CLASS	1,045	1,370

/- PRIVATE PSYCHIATRIC .....

- 8 -

- PRIVATE PSYCHIATRIC WARD		
1ST CLASS	360	465
2ND CLASS	240	310
- TSAN YUK HOSPITAL (SPECIAL CLASS)	880	1,370
OUT-PATIENT (PER ATTENDANCE)		
-----		
- GENERAL OUT-PATIENT	18	21
- SPECIALIST OUT-PATIENT	28	33
- DRESSING AND INJECTION	7	9
- GERIATRIC DAY CENTRE	27	34
- PSYCHIATRIC DAY CENTRE	27	34
COMMUNITY NURSING (PER VISIT)		
-----		
- GENERAL	27	34
- PSYCHIATRIC	27	34

THE SPOKESMAN POINTED OUT THAT THE NEW FEES WOULD APPLY ONLY TO ENTITLED PERSONS, THAT WAS THOSE WHO HOLD A HONG KONG IDENTITY CARD OR A BRITISH PASSPORT.

PATIENTS NOT HOLDING A HONG KONG IDENTITY CARD OR A BRITISH PASSPORT WILL CONTINUE TO PAY THE FULL COST OF THE MEDICAL SERVICES PROVIDED, WHICH HAS ALSO BEEN ADJUSTED.

THE HOSPITAL AUTHORITY AND THE DEPARTMENT OF HEALTH STAND READY TO ANSWER QUESTIONS ON THESE NEW FEES.

- - - - 0 - - - -

### 3 BAN ON COMMERCIAL ORGAN TRADING AND TRANSPLANTS \* \* \* \* \*

A BILL WHICH SEEKS TO PROHIBIT COMMERCIAL TRADING IN HUMAN ORGANS AND ORGAN TRANSPLANTS IN THE TERRITORY WAS GAZETTED TODAY (FRIDAY).

COMMERCIAL ORGAN TRADING HAS BEEN CONDEMNED INTERNATIONALLY AS AN UNETHICAL AND MORALLY REPUGNANT PRACTICE. THE BILL AIMS TO PREVENT THIS AND TO SAFEGUARD THE PUBLIC.

UNDER THE HUMAN ORGAN TRANSPLANT BILL, IT WILL BE AN OFFENCE FOR ANY PERSON TO BE INVOLVED IN THE SALE AND PURCHASE OF HUMAN ORGANS, WHETHER REMOVED FROM A LIVING OR DEAD PERSON.

THE BILL ALSO SEEKS TO BAN ALL ADVERTISEMENTS AND SOLICITATION RELATING TO COMMERCIAL ORGAN TRADING AND TO REGULATE THE USE OF ORGANS FROM LIVING DONORS.

"TRANSPLANT OF ORGANS FROM A LIVING DONOR WILL BE PROHIBITED UNLESS THE DONOR IS GENETICALLY RELATED TO OR MARRIED TO THE PROSPECTIVE RECIPIENT, OR UNLESS APPROVAL IS OBTAINED FROM A HUMAN ORGAN TRANSPLANT BOARD, IF THE BILL BECOMES LAW," A PRINCIPAL ASSISTANT SECRETARY OF THE HEALTH AND WELFARE BRANCH, MR DEREK GOULD, SAID.

"FAILURE TO COMPLY WITH THIS STIPULATION WOULD ATTRACT A FINE OF \$10,000 FOR FIRST CONVICTION AND \$25,000 AND ONE YEAR IMPRISONMENT FOR SUBSEQUENT CONVICTION."

COMMERCIAL DEALINGS IN HUMAN ORGANS INTENDED FOR TRANSPLANT PURPOSES AND ADVERTISEMENTS OFFERING TO BUY OR SELL SUCH ORGANS WILL ALSO BE PROHIBITED.

THE PENALTY FOR INITIATING OR NEGOTIATING ANY ARRANGEMENT INVOLVING PAYMENT FOR AN ORGAN IS \$10,000 FOR FIRST CONVICTION AND \$25,000 PLUS ONE YEAR IMPRISONMENT UPON SUBSEQUENT CONVICTION.

A MULTI-MEDIA CAMPAIGN TO MOTIVATE MORE PEOPLE IN OUR COMMUNITY TO DONATE ORGANS WILL SOON BE LAUNCHED BY THE DEPARTMENT OF HEALTH.

MR GOULD OBSERVED THAT HONG KONG PEOPLE ARE VERY CARING AND THERE IS UNQUESTIONABLY A LARGE POOL OF POTENTIAL ORGAN DONORS.

"WE HAVE FOUND, HOWEVER, THAT MOST PEOPLE STILL PREFER A SYSTEM OF CONSENSUAL DONATION," HE SAID.

"WE ARE TARGETTING OUR EFFORTS TO PROVIDE MORE INFORMATION ON ORGAN DONATION. WE ARE ALSO AIMING TO INCREASE PUBLIC ACCEPTANCE TO THE IDEA OF TRANSPLANTS AND DONATION GENERALLY."

THE BILL WILL BE INTRODUCED INTO THE LEGISLATIVE COUNCIL ON APRIL 8, 1992.

- - - - 0 - - - -

SECOND QUARTER RATES NOTICES  
\* \* \* \* \*

IN RESPONSE TO PRESS ENQUIRIES, A SPOKESMAN FOR THE RATING AND VALUATION DEPARTMENT SAID TODAY (FRIDAY) THAT THE TREASURY WAS ISSUING THE RATES DEMANDS FOR THE SECOND QUARTER OF 1992.

THESE ARE NORMALLY DESPATCHED A FEW DAYS BEFORE THE BEGINNING OF THE QUARTER IN ORDER TO ENSURE THAT RATEPAYERS HAVE PLENTY OF TIME TO PAY THEM BY THE DUE DATE.

THE DEMANDS NOW BEING ISSUED ARE CHARGED AT SIX PER CENT OF THE RATEABLE VALUES WHICH REFLECTS THE INCREASE IN RATES PROPOSED BY THE FINANCIAL SECRETARY IN HIS RECENT BUDGET SPEECH.

- 10 -

THIS HAS BEEN GIVEN LEGAL EFFECT BY A REVENUE PROTECTION ORDER SIGNED BY THE GOVERNOR AND PUBLISHED IN THE GAZETTE ON MARCH 4 THIS YEAR, PENDING THE INTRODUCTION OF A RESOLUTION INTO THE LEGISLATIVE COUNCIL IN APRIL.

RATEPAYERS SHOULD PAY THE AMOUNT SHOWN ON THE DEMANDS ON OR BEFORE APRIL 30 THIS YEAR.

- - - - 0 - - - -

SHEK KONG ENQUIRY COMPLETED

\* \* \* \* \*

THE GOVERNOR, LORD WILSON, HAS TODAY (FRIDAY) RECEIVED MR JUSTICE KEMPSTER'S REPORT ON THE DISTURBANCE AND FIRE AT THE SHEK KONG DETENTION CENTRE ON THE NIGHT OF FEBRUARY 3 TO 4.

A GOVERNMENT SPOKESMAN CONFIRMED THAT AS PREVIOUSLY STATED, THE FINDINGS OF MR JUSTICE KEMPSTER'S REPORT WOULD BE MADE PUBLIC.

BEFORE THIS WAS DONE, THE GOVERNMENT WOULD WISH TO CONSIDER THE REPORT CAREFULLY TO ENSURE THAT WHAT IS MADE PUBLIC DOES NOT PREJUDICE THE CRIMINAL PROCEEDINGS NOW UNDERWAY.

- - - - 0 - - - -

BILL TO BETTER DEFINE BUILDING AUTHORITY'S POWERS GAZETTED

\* \* \* \* \*

A BILL WHICH SEEKS TO BETTER DEFINE THE POWERS OF THE BUILDING AUTHORITY AND TO STREAMLINE SOME OF ITS OPERATING PROCEDURES WAS GAZETTED TODAY (FRIDAY).

ONE OF THE PROVISIONS IN THE BUILDINGS (AMENDMENT) BILL 1992 IS TO REQUIRE THAT PRIOR APPROVAL SHOULD BE OBTAINED FROM THE BUILDING AUTHORITY FOR CARRYING OUT GROUND INVESTIGATION AND UNDERGROUND DRAINAGE WORKS WITHIN THE MTR PROTECTION AREAS.

A BUILDINGS ORDINANCE OFFICE SPOKESMAN SAID: "THE REQUIREMENT IS DESIGNED TO PROTECT MTR UNDERGROUND STRUCTURES FROM POSSIBLE DAMAGE CAUSED BY SUCH WORKS WHICH ARE NOT COVERED IN THE SCHEDULE OF CONTROL IN THE EXISTING ORDINANCE."

THE BILL ALSO SEEKS TO INTRODUCE MORE EFFECTIVE CONTROL BY THE BUILDING AUTHORITY TO TAKE ACTION AGAINST DEFECTIVE OR INSANITARY DRAINS AND TO RECOVER COSTS OF WORKS IN DEFAULT CASES.

ANOTHER PROVISION IN THE BILL WILL REQUIRE THE 2,200 CONTRACTORS NOW ON THE BUILDING AUTHORITY'S REGISTER TO PAY AN ANNUAL FEE TO RETAIN THEIR NAMES ON THE REGISTER.

"THE REQUIREMENT AIMS TO ENSURE THAT THE BUILDING AUTHORITY'S RECORDS ARE UP-TO-DATE AND THE REGISTERED CONTRACTORS ARE INDEED PRACTISING THEIR TRADE," THE SPOKESMAN SAID.

OTHER PROVISIONS IN THE BILL WILL INCLUDE:

- \* STRENGTHENING OF THE BUILDING AUTHORITY'S POWERS TO REMOVE PROJECTIONS OVER STREETS;
- \* EMPOWERING THE BUILDING AUTHORITY TO RECOVER THE COSTS OF ABORTIVE VISITS MADE BY GOVERNMENT'S CONTRACTORS WHO INTEND TO CARRY OUT WORKS ON BEHALF OF THE BUILDING AUTHORITY; AND
- \* AUTHORISING THE BUILDINGS ORDINANCE OFFICE TO DESTROY OR DISPOSE OF PLANS AND OTHER BUILDING DOCUMENTS AFTER MICROFILMING.

THE BILL WILL BE INTRODUCED INTO THE LEGISLATIVE COUNCIL NEXT MONTH.

- - - - 0 - - - -

#### MORE PROTECTION AGAINST CHILD ABUSE

\* \* \* \* \*

THE PROTECTION OF WOMEN AND JUVENILES (AMENDMENT) BILL 1992 WHICH SEEKS TO WIDEN THE CIRCUMSTANCES IN WHICH A CHILD MAY BE CONSIDERED TO BE IN NEED OF CARE OR PROTECTION WAS GAZETTED TODAY (FRIDAY).

UNDER THE PROPOSED BILL, THE EFFECTS OF PSYCHOLOGICAL ABUSE AND NEGLECT WILL ALSO BE INCLUDED AS GROUNDS FOR CARE OR PROTECTION.

COMMENTING ON THE BILL, A GOVERNMENT SPOKESMAN SAID THE BILL AIMED TO BRING THE PRINCIPAL ORDINANCE MORE IN LINE WITH COMMUNITY VALUES AND ATTITUDES ON THE PROBLEM OF CHILD ABUSE.

"THERE IS NOW MUCH GREATER AWARENESS AND UNDERSTANDING IN THE COMMUNITY OF THE PROBLEM OF CHILD ABUSE THAN BEFORE, AND THE PROCEDURES FOR DEALING WITH CHILD ABUSE CASES NEED TO BE REVIEWED AND REFINED," THE SPOKESMAN SAID.

"THE WIDELY PUBLICISED KWOK AH NUI CASE HAS HAD A MAJOR INFLUENCE ON THE PRESENT REVIEW.

"IT ILLUSTRATED THE INFLEXIBLE NATURE OF THE POWERS OF INTERVENTION AND INVESTIGATION VESTED IN THE DIRECTOR OF SOCIAL WELFARE UNDER THE ORDINANCE AND THE PROBLEM OF THE DEFINITION OF CHILD ABUSE," HE SAID.

THE BILL THEREFORE SEEKS TO PROVIDE THE DIRECTOR OF SOCIAL WELFARE WITH MORE FLEXIBLE POWERS OF INTERVENTION AND INVESTIGATION WITHOUT ALWAYS HAVING TO FIRST REMOVE A CHILD FROM HOME.

/THE DIRECTOR .....

- 12 -

THE DIRECTOR WILL BE ENABLED TO OBTAIN A MEDICAL OR PSYCHOLOGICAL ASSESSMENT OF A CHILD BY ISSUING A CHILD ASSESSMENT NOTICE TO THE CHILD'S PARENT REQUIRING HIM OR HER TO BRING THE CHILD FOR AN ASSESSMENT BY A DOCTOR OR CLINICAL PSYCHOLOGIST.

THE BILL ALSO STIPULATES THAT THE DIRECTOR OF SOCIAL WELFARE WILL BE REQUIRED TO MAKE APPLICATION TO A COURT WITHIN 48 HOURS, INSTEAD OF EIGHT DAYS, OF ANY REMOVAL OR DETENTION OF A CHILD OR JUVENILE UNDER THE PRINCIPAL ORDINANCE.

IN ADDITION, ALL REFERENCES TO SPECIAL PROTECTION FOR WOMEN IN THE PRINCIPAL ORDINANCE WILL BE REMOVED SO THAT IT WILL APPLY EQUALLY TO FEMALE AND MALE CHILDREN AND JUVENILES.

THE BILL WILL BE INTRODUCED INTO THE LEGISLATIVE COUNCIL ON APRIL 8 THIS YEAR.

- - - - 0 - - - -

## PROVISIONAL TRADE FIGURES FOR FEBRUARY

\* \* \* \* \*

IN FEBRUARY 1992, BOTH EXPORTS AND IMPORTS RECORDED SUBSTANTIAL INCREASES OVER A YEAR EARLIER, THESE ARE SHOWN IN THE PROVISIONAL TRADE FIGURES RELEASED TODAY (FRIDAY) BY THE CENSUS AND STATISTICS DEPARTMENT.

THE VALUE OF RE-EXPORTS ROSE SHARPLY BY \$17,920 MILLION OR 57.0% OVER A YEAR EARLIER TO \$49,381 MILLION IN FEBRUARY.

THE VALUE OF DOMESTIC EXPORTS ALSO SHOWED A MARKED INCREASE, BY \$3,144 MILLION OR 21.9% TO \$17,490 MILLION OVER THE SAME PERIOD.

TAKING RE-EXPORTS AND DOMESTIC EXPORTS TOGETHER, THE VALUE OF TOTAL EXPORTS, AT \$66,871 MILLION IN FEBRUARY 1992, WAS \$21,064 MILLION OR 46.0% HIGHER THAN A YEAR EARLIER.

MEANWHILE, THE VALUE OF IMPORTS INCREASED MARKEDLY BY \$23,166 MILLION OR 51.5% TO \$68,175 MILLION.

AS THE VALUE OF TOTAL EXPORTS WAS SMALLER THAN THAT OF TOTAL IMPORTS, A VISIBLE TRADE DEFICIT OF \$1,304 MILLION, EQUIVALENT TO 1.9% OF THE VALUE OF IMPORTS, WAS RECORDED IN FEBRUARY 1992.

THIS COMPARES WITH THE SURPLUS OF \$798 MILLION, EQUIVALENT TO 1.8% OF THE VALUE OF IMPORTS, RECORDED IN FEBRUARY 1991.

IN VIEW OF THE VOLATILITY OF THE TRADE FIGURES AT THE BEGINNING OF A YEAR, IT IS USEFUL TO MAKE COMPARISONS OVER A LONGER PERIOD.

IN THE THREE MONTHS ENDING FEBRUARY 1992, THE VALUE OF RE-EXPORTS AMOUNTED TO \$140,876 MILLION, \$33,633 MILLION OR 31.4% HIGHER THAN A YEAR EARLIER.

/THE VALUE .....

THE VALUE OF DOMESTIC EXPORTS INCREASED BY \$220 MILLION OR 0.4% TO \$53,954 MILLION OVER THE SAME PERIOD.

TAKING RE-EXPORTS AND DOMESTIC EXPORTS TOGETHER, THE VALUE OF TOTAL EXPORTS IN THE THREE MONTHS ENDING FEBRUARY 1992, AT \$194,830 MILLION, WAS \$33,853 MILLION OR 21.0% HIGHER THAN A YEAR EARLIER.

MEANWHILE, THE VALUE OF IMPORTS INCREASED BY \$36,030 MILLION OR 21.8% TO \$201,057 MILLION.

A VISIBLE TRADE DEFICIT OF \$6,227 MILLION, EQUIVALENT TO 3.1% OF THE VALUE OF IMPORTS, WAS RECORDED IN THE THREE MONTHS ENDING FEBRUARY 1992. THIS COMPARES WITH A DEFICIT OF \$4,050 MILLION, EQUIVALENT TO 2.5% OF THE VALUE OF IMPORTS, RECORDED IN THE THREE MONTHS ENDING FEBRUARY 1991.

A GOVERNMENT SPOKESMAN CAUTIONED THAT LIKE JANUARY, THE TRADE PERFORMANCE IN FEBRUARY WAS ALSO AFFECTED BY THE TIMING OF THE CHINESE NEW YEAR HOLIDAY, THOUGH PROBABLY IN A DIFFERENT DIRECTION.

SOME SHIPMENTS THAT SHOULD HAVE BEEN PLACED IN JANUARY WERE POSTPONED TO FEBRUARY, AFTER THE HOLIDAY.

TRADE FIGURES FOR A LONGER PERIOD INDICATED THAT WHILE GROWTH OF RE-EXPORTS REMAINED ROBUST, THAT OF DOMESTIC EXPORTS WAS MUCH SLOWER.

THIS REFLECTED LARGELY THE CONTINUED RELATIVE SHIFT FROM DOMESTIC EXPORTS TO RE-EXPORTS AS LOCAL PRODUCTION PROCESSES MOVED TO SOUTH CHINA, RESULTING IN MORE GOODS BEING SHIPPED OUT AS RE-EXPORTS OF CHINA ORIGIN RATHER THAN AS DOMESTIC EXPORTS.

ON THE OTHER HAND, THE SUSTAINED INCREASE IN RETAINED IMPORTS, BY 10.9% IN VALUE TERMS IN THE THREE MONTHS ENDING FEBRUARY 1992 OVER A YEAR EARLIER, WAS IN LINE WITH THE CONTINUED GROWTH IN DOMESTIC DEMAND.

THE FOLLOWING TABLE PRESENTS THE PROVISIONAL TRADE FIGURES FOR FEBRUARY 1992:

TRADE FIGURES FOR FEBRUARY, 1992

MERCHANDISE: DOMESTIC EXPORTS :	\$17,490 MILLION	
RE-EXPORTS :	\$49,381 MILLION	
TOTAL EXPORTS :	\$66,871 MILLION	
IMPORTS :	\$68,175 MILLION	
TRADE BALANCE :	\$1,304 MILLION	(IN DEFICIT)

-----  
COMPARATIVE FIGURES

LATEST 3 MONTHS	DEC 91 TO	DEC 90 TO	INCREASE	
	FEB 92	FEB 91	HK\$ MN.	%
	HK\$ MN.	HK\$ MN.		
DOMESTIC EXPORTS	53,954	53,734	220	0.4
RE-EXPORTS	140,876	107,243	33,633	31.4
TOTAL EXPORTS	194,830	160,977	33,853	21.0
IMPORTS	201,057	165,027	36,030	21.8
TRADE BALANCE	-6,227	-4,050	-2,177	

/SAME MONTH .....

FRIDAY, MARCH 27, 1992

- 14 -

SAME MONTH LAST YEAR	FEBRUARY	FEBRUARY	INCREASE	
	1992	1991	HK\$ MN.	%
	HK\$ MN.	HK\$ MN.		
DOMESTIC EXPORTS	17,490	14,346	3,144	21.9
(% OF TOTAL EXPORTS)	(26.2%)	(31.3%)		
RE-EXPORTS	49,381	31,461	17,920	57.0
TOTAL EXPORTS	66,871	45,807	21,064	46.0
IMPORTS	68,175	45,009	23,166	51.5
TRADE BALANCE	-1,304	798	-2,102	

LAST MONTH	FEBRUARY	JANUARY	INCREASE	
	1992	1992	HK\$ MN.	%
	HK\$ MN.	HK\$ MN.		
DOMESTIC EXPORTS	17,490	14,165	3,325	23.5
(% OF TOTAL EXPORTS)	(26.2%)	(26.6%)		
RE-EXPORTS	49,381	39,009	10,372	26.6
TOTAL EXPORTS	66,871	53,174	13,697	25.8
IMPORTS	68,175	55,909	12,266	21.9
TRADE BALANCE	-1,304	-2,735	1,431	

CALENDAR YEAR TO-DATE	JAN-FEB	JAN-FEB	INCREASE	
	1992	1991	HK\$ MN.	%
	HK\$ MN.	HK\$ MN.		
DOMESTIC EXPORTS	31,655	33,522	-1,867	-5.6
(% OF TOTAL EXPORTS)	(26.4%)	(32.2%)		
RE-EXPORTS	88,389	70,482	17,907	25.4
TOTAL EXPORTS	120,044	104,004	16,040	15.4
IMPORTS	124,084	105,669	18,415	17.4
TRADE BALANCE	-4,040	-1,665	-2,375	

LAST 12 MONTHS	MAR 91 TO	MAR 90 TO	INCREASE	
	FEB 92	FEB 91	HK\$ MN.	%
	HK\$ MN.	HK\$ MN.		
DOMESTIC EXPORTS	229,178	229,449	-271	-0.1
RE-EXPORTS	552,748	432,075	120,673	27.9
TOTAL EXPORTS	781,926	661,524	120,402	18.2
IMPORTS	797,396	666,636	130,760	19.6
TRADE BALANCE	-15,470	-5,112	-10,358	

- - - - 0 - - - -

/15 .....

WAYS TO IMPROVE MEDICAL SERVICES FOR HK

\* \* \* \* \*

A GOOD PRIMARY HEALTH CARE SYSTEM GOES A LONG WAY TO ENHANCING THE GENERAL HEALTH OF THE POPULATION, THE SECRETARY FOR HEALTH AND WELFARE, MRS ELIZABETH WONG, SAID TODAY (FRIDAY).

PRIMARY HEALTH CARE IS PREVENTIVE, PROMOTIVE AND THUS PARTICIPATORY CARE.

"IN MANY WAYS, IT IS ALSO MORE EFFECTIVE," MRS WONG SAID, "IT LAYS A FIRM FOUNDATION FOR AN EFFICIENT AND COST-EFFECTIVE SECONDARY AND TERTIARY HEALTH CARE SYSTEM."

MRS WONG WAS SPEAKING ON WAYS TO IMPROVE MEDICAL SERVICES FOR HONG KONG AT THE HONG KONG ASSOCIATION OF THE PHARMACEUTICAL INDUSTRY LUNCHEON.

SHE SAID THE GOVERNMENT HAD ACCEPTED THE REPORT BY THE WORKING PARTY ON PRIMARY HEALTH CARE WHICH PROVIDED A CLEAR AND COMPREHENSIVE GUIDANCE FOR FORMULATING A LONG-TERM HEALTH CARE STRATEGY FOR THE COMING DECADE.

"WE HAVE GENERALLY ADOPTED THE 102 RECOMMENDATIONS IN THE REPORT AND ARE COMMITTED TO IMPLEMENTATION IN PHASES," SHE ADDED.

THE GOVERNOR HAS ALSO APPOINTED A HEALTH AND MEDICAL DEVELOPMENT ADVISORY COMMITTEE TO PROVIDE A FORUM FOR THE DIFFERENT INTERESTS INVOLVED TO GET TOGETHER AND TO ADVISE THE GOVERNMENT ON THE DEVELOPMENT OF HEALTH CARE AND THE INTERFACE BETWEEN HEALTH AND HOSPITAL SERVICES.

AS THE PROVISION OF BETTER SERVICES AT THE HOSPITAL AND PRIMARY HEALTH CARE LEVELS REQUIRES A CORPS OF DOCTORS WITH ADVANCED TRAINING IN THE VARIOUS MEDICAL SPECIALTIES, AN ACADEMY OF MEDICINE FOR POSTGRADUATE AND CONTINUING EDUCATION WOULD BE SET UP TO PRODUCE SUCH SPECIALISTS.

ON NEW REFORMS, MRS WONG SAID A STUDY GROUP HAD LOOKED AT OPTIONS FOR HEALTH FINANCING, INCLUDING MEDICAL INSURANCE, IN HONG KONG WHILE ANOTHER GROUP WAS CURRENTLY REVIEWING THE PRESENT ARRANGEMENTS ON FEES AND WAIVER TO WORK OUT A LONG-TERM STRATEGY.

PROPOSALS ON THESE ISSUES WILL BE PUBLISHED IN A GREEN PAPER FOR PUBLIC CONSULTATION IN A FEW MONTHS' TIME.

TURNING TO THE HOSPITAL AUTHORITY WHICH WAS FORMALLY ESTABLISHED ON DECEMBER 1, 1990, MRS WONG POINTED OUT THAT IT HAD DESIGNATED EIGHT "CANDIDATE" HOSPITALS WHERE MANAGEMENT REFORMS WOULD BE INTRODUCED.

NINE CENTRES OF EXCELLENCE WILL ALSO BE SET UP IN MAJOR HOSPITALS TO PROVIDE ADVANCED TREATMENT FOR PATIENTS, TO OFFER OPPORTUNITIES AND FACILITIES FOR HIGHER PROFESSIONAL TRAINING AND RESEARCH, AS WELL AS TO ENHANCE THE STATUS OF INDIVIDUAL HOSPITALS AND THEIR STAFF.

/IN ADDITION, .....

IN ADDITION, THE AUTHORITY HAS SET UP HOSPITAL GOVERNING COMMITTEES TO OVERSEE THE MANAGEMENT OF 23 EX-SUBVENTED INSTITUTIONS; INITIATED A COMPREHENSIVE REVIEW OF THE DEMANDS FOR HOSPITAL BEDS IN THE TERRITORY; AND PLANNED TO DEVELOP A SYSTEM OF PERFORMANCE INDICATORS TO ASSESS EFFICIENCY IN THE DELIVERY OF SERVICES AND TO HIGHLIGHT PRIORITY AREAS FOR IMPROVEMENT.

THE DEPARTMENT OF HEALTH HAS ALSO TAKEN MEASURES TO IMPROVE GENERAL OUT-PATIENT SERVICES THROUGH THE INTRODUCTION OF INDIVIDUAL MEDICAL RECORDS, LABELLING OF DRUGS AND MEDICATION AND A BETTER APPOINTMENT SYSTEM FOR CONTINUITY OF CARE TO PATIENTS.

MRS WONG SAID A PILOT SCHEME TO GROUP CLINICS TOGETHER WITHIN EACH DISTRICT TO INTEGRATE AND NETWORK PREVENTIVE, PROMOTIVE, CURATIVE AND REHABILITATIVE SERVICES, HAD JUST KICKED OFF IN KWUN TONG.

IN THE LIGHT OF EXPERIENCE WITH THIS PILOT, SHE ADDED, THE SCHEME WOULD BE EXTENDED TO TUEN MUN.

- - - - 0 - - - -

#### WORKSHOPS ON TAXI POLICY REVIEW

\* \* \* \* \*

THE TRANSPORT ADVISORY COMMITTEE WORKING GROUP ON TAXI POLICY REVIEW MET WITH THE TAXI ASSOCIATIONS TODAY (FRIDAY), A TRANSPORT BRANCH SPOKESMAN SAID.

THE WORKING GROUP IS SET UP UNDER THE TRANSPORT ADVISORY COMMITTEE TO REVIEW THE CURRENT TAXI POLICY.

TO FACILITATE PUBLIC DISCUSSIONS ON THE SUBJECT, TWO SEPARATE WORKSHOPS WERE HELD TODAY FOR THE TAXI OWNERS AND DRIVERS ASSOCIATIONS.

AT THE WORKSHOPS, REPRESENTATIVES OF THE TAXI ASSOCIATIONS EXPRESSED THEIR VIEWS ON THE ROLE OF TAXIS, THE LICENSING SYSTEMS, THE TAXI FARE STRUCTURE, THE QUALITY OF TAXI SERVICES AND SO ON.

THE WORKING GROUP WILL TAKE INTO ACCOUNT THEIR COMMENTS BEFORE REPORTING TO THE TRANSPORT ADVISORY COMMITTEE IN JUNE.

ANOTHER WORKSHOP WILL BE HELD FOR THE DISTRICT BOARD REPRESENTATIVES ON APRIL 6 THIS YEAR, THE SPOKESMAN ADDED.

MEMBERS OF THE PUBLIC ARE REMINDED TO SUBMIT THEIR COMMENTS ON CURRENT TAXI POLICY AND PRACTICES BY MARCH 31, THIS YEAR TO THE SECRETARY OF THE TRANSPORT ADVISORY COMMITTEE WORKING GROUP ON TAXI POLICY REVIEW, C/O TRANSPORT BRANCH, GOVERNMENT SECRETARIAT, CENTRAL GOVERNMENT OFFICES (EAST WING), LOWER ALBERT ROAD, HONG KONG.

SUBSEQUENT VIEWS AND SUGGESTIONS AFTER MARCH 31 ARE ALSO WELCOME.

- - - - 0 - - - -

FRIDAY, MARCH 27, 1992

- 17 -

TOWN PLANNING BOARD APPOINTMENTS ANNOUNCED  
\* \* \* \* \*

OFFICIAL AND NON-OFFICIAL MEMBERS HAVE BEEN APPOINTED TO THE TOWN PLANNING BOARD FOR A PERIOD OF TWO YEARS STARTING FROM APRIL 1, 1992.

THE APPOINTMENTS WERE PUBLISHED IN THE GOVERNMENT GAZETTE TODAY (FRIDAY).

THE MEMBERS ARE:

SECRETARY FOR PLANNING, ENVIRONMENT AND LANDS  
(CHAIRMAN)

DIRECTOR OF PLANNING (VICE-CHAIRMAN)

MR CHARLES NICHOLAS BROOKE

MISS ANN CHIANG LAI-WAN

MR CHAN KA-KUI

MISS ESTHER CHAN WAI-FONG

MR ALFRED CHAN WING-KIN

MR CARLOS CHEUNG HON-KAU

MS JENNIFER CHOW KIT-BING

MR WINSTON CHU KA-SUN

MR E J DAVISON

MR FUNG SHIU-WING

MR DANIEL HEUNG CHEUK-KEI

MR ANDREW LEE KING-FUN

PROFESSOR LEUNG CHI-KEUNG

MR DAVID LUNG PING-YEE

MR EDWARD PONG CHONG

MR J C SHAW

MR VICTOR SO HING-WOH

MR HENRY TANG YING-YEN

MR WILLIAM WAN HON-CHEUNG

/DR SAMUEL WONG .....

FRIDAY, MARCH 27, 1992

- 18 -

DR SAMUEL WONG PING-WAI  
PROFESSOR ANTHONY WALKER  
MR ANTHONY WONG LUEN-KIN  
PROFESSOR YEUNG YUE-MAN  
MR EDMUND YOUNG KAK-SUN  
DIRECTOR OF BUILDINGS AND LANDS  
SECRETARY FOR HOME AFFAIRS  
DEPUTY SECRETARY FOR TRANSPORT (TRANSPORT MANAGEMENT)  
DIRECTOR OF ENVIRONMENTAL PROTECTION  
PRINCIPAL GOVERNMENT TOWN PLANNER (DISTRICT)  
(SECRETARY)

MEANWHILE, APPOINTMENTS FROM AMONG THE MEMBERS OF THE TOWN PLANNING BOARD AS MEMBERS OF METRO PLANNING COMMITTEE AND THE RURAL AND NEW TOWN PLANNING COMMITTEE OF THE BOARD WERE ALSO ANNOUNCED.

THE APPOINTMENTS ARE ALSO FOR TWO YEARS BEGINNING FROM APRIL 1, 1992

BOTH COMMITTEES ARE CHAIRED BY THE DIRECTOR OF PLANNING.

- - - - 0 - - - -

WUN SHA STREET PLAYGROUND TO BE UPGRADED

\* \* \* \*

THE ARCHITECTURAL SERVICES DEPARTMENT IS INVITING TENDERS FOR IMPROVEMENT WORKS TO THE WUN SHA STREET PLAYGROUND IN CAUSEWAY BAY.

NOTICE OF THE TENDER WAS GAZETTED TODAY (FRIDAY).

WORKS UNDER THE CONTRACT WILL INCLUDE UPGRADING THE EXISTING SITTING-OUT AREA AND THE HALF-SIZED BASKETBALL COURT.

THE PROJECT IS EXPECTED TO START IN JUNE THIS YEAR AND BE COMPLETED BY DECEMBER.

FORMS OF TENDER AND FURTHER PARTICULARS MAY BE OBTAINED FROM THE ARCHITECTURAL SERVICES DEPARTMENT ON THE 34TH FLOOR OF QUEENSWAY GOVERNMENT OFFICES, 66 QUEENSWAY, HONG KONG.

DEADLINE FOR SUBMISSION OF TENDERS IS NOON, APRIL 24.

- - - - 0 - - - -

/19 .....

FRIDAY, MARCH 27, 1992

- 19 -

TENDERS INVITED FOR SERVICE RESERVOIR WORKS

\* \* \* \* \*

THE WATER SUPPLIES DEPARTMENT IS INVITING TENDERS FOR THE CONSTRUCTION OF THE SECOND PORTION OF THE TUEN MUN WEST FRESH WATER SERVICE RESERVOIR.

THE EXTENDED PORTION, WITH A CAPACITY OF 37,000 CUBIC METRES, IS PART OF THE SCHEME TO IMPROVE THE WATER SUPPLY TO THE AREA IN CONJUNCTION WITH THE NEW TOWN DEVELOPMENT.

THE FIRST PORTION, WITH A CAPACITY OF 14,000 CUBIC METRES, HAS BEEN IN SERVICE SINCE 1988.

WORKS FOR THE SECOND PORTION ARE SCHEDULED TO START IN JULY AND TAKE ABOUT 18 MONTHS TO COMPLETE.

THE DEADLINE FOR SUBMISSION OF TENDERS IS NOON ON APRIL 24.

FORMS OF TENDER AND PARTICULARS MAY BE OBTAINED FROM THE WATER SUPPLIES DEPARTMENT, 44TH FLOOR, WANCHAI TOWER II, 7 GLOUCESTER ROAD, WAN CHAI, HONG KONG.

- - - - 0 - - - -

PROPOSALS TO ALTER PROPERTY RATEABLE VALUE INVITED

\* \* \* \* \*

THE RATING AND VALUATION DEPARTMENT TODAY (FRIDAY) PUBLISHED A NOTICE IN THE GAZETTE REMINDING THE PUBLIC THAT IF THEY WISH TO MAKE A PROPOSAL TO ALTER THE RATEABLE VALUE OF THEIR PROPERTY FOR THE YEAR STARTING APRIL 1, 1992, THEY MAY DO SO DURING THE MONTHS OF APRIL AND MAY.

FORMS FOR THIS PURPOSE MAY BE OBTAINED FROM THE DEPARTMENT AT HENNESSY CENTRE, 17TH FLOOR, 500 HENNESSY ROAD, CAUSEWAY BAY, HONG KONG AND FROM DISTRICT OFFICES.

PROPOSALS MUST BE LODGED WITH THE DEPARTMENT WITHIN THE MONTHS OF APRIL AND MAY. THEY CANNOT BE ACCEPTED IF SERVED BEFORE APRIL 1 OR AFTER MAY 31.

A SPOKESMAN FOR THE DEPARTMENT POINTED OUT THAT RATEABLE VALUES FOR THE NEXT FINANCIAL YEAR WILL BE THE SAME AS FOR THIS YEAR.

WHERE AN ALTERATION WAS MADE TO THE RATEABLE VALUE AS A RESULT OF A PROPOSAL LODGED LAST YEAR, THE REVISED FIGURE WILL APPLY NEXT YEAR AND SO NO FURTHER PROPOSALS ARE NEEDED TO BE MADE.

HE STRESSED THAT NOTWITHSTANDING THE LODGING OF A PROPOSAL OR APPEAL, RATES MUST STILL BE PAID BY THE DUE DATE.

- - - - 0 - - - -

FRIDAY, MARCH 27, 1992

- 20 -

TOURISM VITAL TO HONG KONG  
\* \* \* \* \*

THE SECRETARY FOR HOME AFFAIRS, MR MICHAEL SUEN, TODAY (FRIDAY) SAID TOURISM HAD AN IMPORTANT BEARING ON ALL PEOPLE IN HONG KONG.

SPEAKING AT THE OPENING CEREMONY OF THE "TOURISM AND YOU" ROVING EXHIBITION IN CENTRAL, HE POINTED OUT THAT HONG KONG HAD BECOME ONE OF THE MOST IMPORTANT TOURIST DESTINATIONS IN THE WORLD WITH OVER SIX MILLION TOURISTS COMING TO THE TERRITORY LAST YEAR, CONTRIBUTING \$40 BILLION TO THE LOCAL ECONOMY.

HONG KONG HAD MUCH MORE TO OFFER TO THE TOURISTS THAN JUST THOSE STANDARD ATTRACTIONS SUCH AS THE PEAK TRAM, STAR FERRY, OCEAN PARK, FOOD AND SHOPPING, HE SAID.

"FOR INSTANCE, THERE ARE TRADITIONAL FESTIVALS SUCH AS THE DRAGON BOAT FESTIVAL; THERE ARE THE MANY TEMPLES, THE ANTIQUE STORES AND THE STREET MARKETS; AND THERE ARE THE MANY MODERN SHOPPING CENTRES.

"ALL OF THESE HAVE ONE THING IN COMMON - THEY ARE NOT MERELY TOURIST ORIENTED BUT ARE AN INTEGRAL PART OF OUR DAILY LIFE," HE SAID.

TURNING TO THE EXHIBITION, MR SUEN NOTED THAT IT HAD BEEN ORGANISED BY THE HONG KONG TOURIST ASSOCIATION WITH ASSISTANCE FROM VARIOUS DISTRICT OFFICES AND DISTRICT BOARDS, AND HAD BEEN ON DISPLAY IN ALL DISTRICTS OVER THE LAST FEW MONTHS.

HE SAID THE EXHIBITION HAD ALSO ALLOWED LOCAL PEOPLE TO BECOME AWARE OF THE TOURIST ATTRACTIONS IN THEIR OWN DISTRICT, AND TO UNDERSTAND THE IMPORTANCE OF TOURISM TO HONG KONG PEOPLE.

DURING TODAY'S CEREMONY, THE CHAIRMEN OF THE 19 DISTRICT BOARDS ALSO RECEIVED COMMEMORATIVE TROPHIES FROM THE HONG KONG TOURIST ASSOCIATION'S CHAIRMAN, MR MARTIN BARROW, FOR THEIR PARTICIPATION IN THE PROJECT.

- - - - 0 - - - -

INSHORE WORKS FOR AIRPORT-RELATED PROJECTS  
\* \* \* \* \*

THE GOVERNMENT IS TO GO AHEAD WITH TWO INSHORE WORKS RESPECTIVELY ON LANTAU AND TSING YI IN CONJUNCTION WITH AIRPORT-RELATED PROJECTS.

ON LANTAU, AN AREA OF ABOUT 1.5 HECTARES OF FORESHORE AND SEA-BED AT TSING CHAU WAN WILL BE RECLAIMED TO PROVIDE LAND FOR THE FORMATION OF A RESERVE FOR THE FUTURE AIRPORT RAILWAY.

/IN THE .....

IN THE NORTH OF TSING YI, THE GOVERNMENT IS TO DREDGE AND BACKFILL WITHIN AN AREA OF ABOUT 1.05 HECTARES OF FORESHORE AND SEA-BED AT NGAU KOK WAN.

THE AREA WILL BE RECLAIMED LATER TO PROVIDE A BARGING AREA FOR SURPLUS MATERIAL EXCAVATED FROM THE LANTAU FIXED CROSSING/ROUTE 3 INTERCHANGE PROJECT.

THE EXTENT OF THE AREAS AFFECTED BY THE TWO INSHORE WORKS WAS DESCRIBED IN SEPARATE NOTICES OF AUTHORISATION GAZETTED TODAY (FRIDAY).

ANY PERSON WHO CONSIDERS THAT HIS INTEREST, RIGHT OR EASEMENT IN OR OVER THE FORESHORE AND SEA-BED INVOLVED WILL BE AFFECTED BY SUCH UNDERTAKINGS MAY DELIVER TO THE DIRECTOR OF BUILDINGS AND LANDS A WRITTEN CLAIM FOR COMPENSATION ON OR BEFORE MARCH 26, 1993.

THE NOTICES, IN BOTH ENGLISH AND CHINESE, TOGETHER WITH THEIR RELATED PLANS CAN BE SEEN AT THE BUILDINGS AND LANDS DEPARTMENT'S SURVEY AND MAPPING OFFICE, 14TH FLOOR, MURRAY BUILDING, GARDEN ROAD, HONG KONG (WHERE COPIES CAN BE PURCHASED ON ORDER) AND AT THE RESPECTIVE DISTRICT OFFICES.

- - - - 0 - - - -

FILM AND TV CO-PRODUCTIONS WITH CANADA ENCOURAGED

\* \* \* \* \*

FILM AND TELEVISION CO-PRODUCTION OPPORTUNITIES IN HONG KONG AND CANADA UNDER THE MEMORANDUM OF UNDERSTANDING (MOU) SIGNED BY THE TWO GOVERNMENTS LAST YEAR WERE EXPLAINED TO LOCAL FILM-MAKERS AND THE TELEVISION INDUSTRY AT A SEMINAR TODAY (FRIDAY).

SPEAKING AT THE OPENING OF THE SEMINAR, WHICH WAS ORGANISED BY THE CERTIFYING BODY SET UP TO IMPLEMENT THE MOU, THE SECRETARY FOR RECREATION AND CULTURE, MR JAMES SO, SAID NEW MARKETS WERE BEING CREATED FOR FILMS DUE TO INCREASING AFFLUENCE AND STRONG DEMAND FOR ENTERTAINMENT IN THE ASIAN REGION AND THROUGHOUT THE WORLD.

"THE SALE OF FILMS WHETHER FOR THE CINEMA OR TELEVISION CAN BE AN IMPORTANT EXPORT INDUSTRY AND WE SHOULD DO ALL WE CAN TO ENCOURAGE ITS GROWTH," MR SO SAID.

THE SECRETARY SAID THE MOU ON FILM AND TELEVISION CO-PRODUCTION BETWEEN HONG KONG AND CANADA WOULD FACILITATE THE ENTRY OF TECHNICAL PERSONNEL, ACTORS, PERFORMERS AND PRODUCERS AND ALL THE EQUIPMENT NECESSARY FOR CO-PRODUCTION INTO BOTH PLACES.

"THE MOU ENABLES HONG KONG AND CANADIAN PRODUCERS OF FILM AND TELEVISION PROGRAMMES TO POOL THEIR RESOURCES TO CO-PRODUCE FILM AND TELEVISION PROGRAMMES," MR SO SAID.

"CO-PRODUCTIONS UNDER THE MOU WILL BE TREATED BY THE GOVERNMENTS OF HONG KONG AND CANADA AS LOCAL PRODUCTIONS AND WILL BE ENTITLED TO UNRESTRICTED MARKET ACCESS IN THESE TWO PLACES."

"IN ADDITION HONG KONG PRODUCERS MAY BECOME ELIGIBLE THROUGH THEIR CANADIAN PARTNERS FOR VARIOUS PUBLIC AND PRIVATE FUNDING OPPORTUNITIES AVAILABLE IN CANADA FOR CO-PRODUCTIONS," HE ADDED.

THE CERTIFYING BODY CHAIRED BY THE DEPUTY SECRETARY FOR RECREATION AND CULTURE, AND COMPRISING REPRESENTATIVES FROM THE FILM AND TELEVISION INDUSTRIES WAS SET UP IN NOVEMBER 1991 TO RECEIVE AND EVALUATE APPLICATIONS FOR CO-PRODUCTIONS AND TO MAKE RECOMMENDATIONS TO THE SECRETARY FOR RECREATION AND CULTURE.

"THE CERTIFYING BODY IS ALSO ACTIVELY PROMOTING CO-PRODUCTION OPPORTUNITIES UNDER THE MOU IN HONG KONG AND CANADA," MR SO SAID.

"IT IS PLANNING ANOTHER SEMINAR TO BE HELD IN CANADA LATER THIS YEAR AS ONE OF THE HIGHLIGHTS OF THE HONG KONG FILM FESTIVAL UNDER THE BANNER OF FESTIVAL HONG KONG '92," HE ADDED.

THE SECRETARY THANKED THE HONG KONG, KOWLOON AND NEW TERRITORIES MOTION PICTURE INDUSTRY ASSOCIATION (MPIA) FOR PROVIDING SECRETARIAT SUPPORT FOR THE OPERATION OF THE CERTIFYING BODY.

AN INFORMATION PAMPHLET ON THE APPLICATION PROCEDURES UNDER THE MOU HAS BEEN PRODUCED FOR DISTRIBUTION TO THE PUBLIC THROUGH THE MPIA.

ALSO SPEAKING AT THE OPENING OF THE SEMINAR WAS THE COMMISSIONER FOR CANADA, MR JOHN HIGGINBOTHAM.

THE HALF-DAY SEMINAR WAS PRESENTED BY FINANCIAL EXPERTS, TAX CONSULTANTS AND LAWYERS IN INTERNATIONAL LAW, AS WELL AS LOCAL FILM DIRECTORS AND PRODUCERS.

THEY WERE MR PHILIP MARCOVICI, MR STEPHEN SHIN, MR LAWRENCE CHENG, MR TOMMY LEUNG AND MISS ANNE CHAN.

THEY SPOKE ON TOPICS INCLUDING HONG KONG OPPORTUNITIES FOR GLOBAL FILM FINANCE, TAX ADVANTAGED FINANCING ARRANGEMENTS FOR HONG KONG AND CANADA CO-PRODUCTIONS, INTELLECTUAL, PROPERTY PROTECTION, THE FILM ENTERTAINMENT INDUSTRY IN SOUTHEAST ASIA AND FILMING EXPERIENCE IN CANADA.

- - - - 0 - - - -

NON-GOVT GROUPS PLAY IMPORTANT ROLE IN ELDERLY SERVICES

\* \* \* \* \*

NON-GOVERNMENT ORGANISATIONS WERE URGED TODAY (FRIDAY) TO SUPPORT THE GOVERNMENT IN PROVIDING RESIDENTIAL FACILITIES FOR THE ELDERLY.

THE APPEAL WAS MADE BY THE DEPUTY DIRECTOR OF SOCIAL WELFARE, MRS ROSE GOODSTADT, AT THE OPENING CEREMONY OF THE BENEVOLENT SOCIETY LAU MUI HIN HOME FOR THE ELDERLY ON TSING YI.

/MRS GOODSTADT .....

MRS GOODSTADT SAID SOCIAL WELFARE EXPENDITURE FOR THE NEXT FISCAL YEAR HAD A 3.9 PER CENT REAL GROWTH.

"APART FROM MAINTAINING EXISTING SERVICES, THE DEPARTMENT ALSO EARMARKED \$44.3 MILLION FOR IMPLEMENTATION OF 84 NEW SERVICE UNITS.

"THESE INCLUDED SEVEN ELDERLY SOCIAL CENTRES, ONE ELDERLY COMMUNITY SERVICE CENTRE, THREE DAY-CARE CENTRES, ONE HOME FOR THE AGED AND TWO CARE-AND-ATTENTION HOMES FOR THE ELDERLY.

"WHILE WE ARE MAKING EFFORTS TO MEET THE SHORTFALL IN RESIDENTIAL PLACES FOR OUR SENIOR CITIZENS, THE NON-GOVERNMENT ORGANISATIONS' PARTICIPATION ALSO PLAYS AN IMPORTANT ROLE," SHE ADDED.

MRS GOODSTADT POINTED OUT THAT THE SOCIAL WELFARE DEPARTMENT HAD TAKEN A SERIES OF MEASURES TO TACKLE THE PROBLEM BY INTRODUCING BOUGHT-PLACE SCHEME, ENCOURAGING NON-PROFIT MAKING ORGANISATION TO OPERATE SELF-FINANCING PROJECTS, AND TURNING SOME RESIDENTIAL PLACES INTO MEAL PLACES AND CARE-AND-ATTENTION PLACES.

- - - - 0 - - - -

INVITATION TO ENROL IN CONTRACTOR LIST FOR  
WASTE RECYCLING FACILITIES PROVISION  
\* \* \* \* \*

THE CIVIL ENGINEERING DEPARTMENT IS INVITING CONTRACTORS TO SUBMIT APPLICATION FOR INCLUSION IN A LIST OF INTERESTED PARTIES FOR THE PROVISION OF CONSTRUCTION WASTE RECYCLING FACILITIES.

THE EXERCISE IS AIMED AT PROVIDING FOR THE PROPER RE-USE AND DISPOSAL OF CONSTRUCTION WASTE.

IT IS INTENDED THAT CONSTRUCTION WASTE WILL NOT BE ACCEPTED FOR DISPOSAL AT LANDFILLS.

THE PROPOSED RECYCLING FACILITIES WOULD PROCESS THE WASTE FOR RECLAIMING LAND AND OTHER USES.

AFTER PROCESSING, MATERIALS NOT SUITABLE FOR RE-USE WILL BE DISPOSED OF AT LANDFILLS.

THE ESSENTIAL OPERATIONS INCLUDE:

- \* SORTING TO SEPARATE FLOATABLE AND BIODEGRADABLE MATERIALS FROM THE INERT MATRIX OF THE WASTE;
- \* SEPARATION OF METALLIC MATERIALS FROM THE WASTE MATRIX;
- \* CRUSHING AND SCREENING TO PROVIDE SUITABLY-SIZED INERT MATERIAL FOR RE-USE, PRIMARILY FOR RECLAIMING LAND; AND

FRIDAY, MARCH 27, 1992

- 24 -

\* TRANSPORTATION OF SUITABLE MATERIALS TO RECLAMATIONS FOR RE-USE AND REJECTED MATERIALS TO LANDFILLS FOR DISPOSAL.

SUBMISONS SHOULD BE MADE IN WRITING TO CHIEF ENGINEER/SOLID WASTE, CIVIL ENGINEERING DEPARTMENT, 101 PRINCESS MARGARET ROAD, HO MAN TIN, KOWLOON, BEFORE APRIL 16.

FURTHER INFORMATION CAN BE OBTAINED FROM THE DEPARTMENT.

- - - - 0 - - - -

MACAU DELEGATION TO SEE YOUTH SERVICES IN HK

\* \* \* \* \*

A 39-MEMBER DELEGATION FROM MACAU, LED BY THE HEAD OF THE YOUTH DEPARTMENT OF THE EDUCATION SERVICE, DR JOAO QUEIROGA, WILL PAY A TWO-DAY VISIT TO HONG KONG TO FAMILIARISE THEMSELVES WITH THE VARIOUS YOUTH SERVICES IN THE TERRITORY.

ANNOUNCING THIS TODAY (FRIDAY), A SPOKESMAN FOR THE CITY AND NEW TERRITORIES ADMINISTRATION (CNTA) SAID THE GROUP WOULD ARRIVE TOMORROW (SATURDAY) MORNING.

THEY WILL FIRST TOUR THE CARITAS SHEK TONG TSUI CHILDREN AND YOUTH CENTRE AND VISIT THE SOCIAL WELFARE DEPARTMENT'S GROUP WORK UNIT IN THE NORTH DISTRICT COMMUNITY CENTRE AND TOWN HALL.

ON SUNDAY, THEY WILL MEET THE CHAIRMAN OF THE COMMISSION ON YOUTH, MR ERIC LI KA-CHEUNG, AND REPRESENTATIVES FROM THE CNTA, THE SOCIAL WELFARE DEPARTMENT AND THE HONG KONG COUNCIL OF SOCIAL SERVICE TO EXCHANGE VIEWS ON YOUTH MATTERS.

THE DELEGATION WILL THEN SEE AN EXHIBITION ON YOUTH'S LEGAL KNOWLEDGE AND AWARENESS ORGANISED BY THE HONG KONG FEDERATION OF YOUTH GROUPS IN KOWLOON PARK.

BEFORE CONCLUDING THE VISIT, THE GROUP WILL TOUR THE DUKE OF EDINBURGH AWARD TRAINING CAMP IN FANLING TO LEARN MORE ABOUT THE SCHEME'S OPERATIONS.

- - - - 0 - - - -

FRIDAY, MARCH 27, 1992

- 25 -

HONG KONG GOVERNMENT EXCHANGE FUND  
MONEY MARKET OPERATIONS  
\* \* \* \* \*

	DATE ----	\$ MILLION -----
CLOSING BALANCE IN THE ACCOUNT ON	26.3.92	1,400
EFFECT OF FORWARDS TO BE SETTLED ON	27.3.92	-640
EFFECT OF OPERATIONS THIS MORNING		-60
EFFECT OF OPERATIONS THIS AFTERNOON		+300
* O/N ASSISTANCE TO BE REVERSED	-700MN	
* OTHER FORWARDS TO BE SETTLED	+60MN	
** O/N ASSISTANCE TO BE REVERSED ON	30.3.92	

TRADE WEIGHTED INDEX 112.8 \*+0.2\* 27.3.92

HONG KONG GOVERNMENT EXCHANGE FUND

EF BILLS		HONG KONG GOVERNMENT BONDS				
TERMS	YIELD	TERM	ISSUE	COUPON	PRICE	YIELD
1 WEEK	4.32 PCT	20 MONTHS	2311	6.25	100.50	6.01
1 MONTH	4.03 PCT	23 MONTHS	2402	5.50	98.82	6.26
3 MONTHS	4.10 PCT					
6 MONTHS	4.41 PCT					
12 MONTHS	4.81 PCT					

TOTAL TURNOVER OF BILLS AND BONDS - 7,079 MN

CLOSED 27 MARCH 1992

----- 0 -----