



Received by PRO
on 26 JUL 1993

DAILY INFORMATION BULLETIN

ISSUED BY GOVERNMENT INFORMATION SERVICES
BEACONSFIELD HOUSE, HONG KONG. TEL.: 842 8777

THURSDAY, JULY 22, 1993

<u>CONTENTS</u>	<u>PAGE NO.</u>
NINTH ROUND OF TALKS ON ELECTION ARRANGEMENTS	1
GOVERNOR WILL HAVE EXTENSIVE DISCUSSIONS IN LONDON	1
GOVT SUPPORTS CHARTER FOR YOUTH	2
GOVERNOR MEETS DISTRICT BOARD MEMBERS	3
PHASED PROGRAMME TO APPLY FOR BN(O) PASSPORTS	4
CONSUMER PRICE INDICES FOR JUNE	5
COMPANIES REGISTRY FIGURES FOR FIRST HALF YEAR RELEASED	12
UNITED NATIONS SANCTIONS AGAINST HAITI	13
CONTROLS ON IMPORTS AND EXPORTS OF OZONE DEPLETING SUBSTANCES	14
GOODS FORFEITURE PROCEEDINGS REVISED	15
ELECTORAL REGISTRATION FOR 93 PUBLISHED	18
LABOUR DEPARTMENT GIVES ADVICE TO JOB-SEEKERS	22
APPEALS TO SOCIAL SECURITY BOARD ON THE RISE	22
DOCTORS INVITED TO JOIN SCHOOL MEDICAL SCHEME	23
25 PASS MEDICAL LICENTIATE EXAM	24
262 YOUNG HEALTH LEADERS TRAINED	24
MUSIC ADMINISTRATOR MEETS STAFF AND PARENTS	25
FINANCE COMMITTEE MEETING	26
HONG KONG GOVERNMENT EXCHANGE FUND MONEY MARKET OPERATIONS .	26

THURSDAY, JULY 22, 1993

- 1 -

NINTH ROUND OF TALKS ON ELECTION ARRANGEMENTS

* * * * *

THE BRITISH SIDE AND THE CHINESE SIDE HAVE AGREED THAT THE BRITISH GOVERNMENT REPRESENTATIVE, SIR ROBIN MCLAREN, BRITISH AMBASSADOR TO CHINA, AND THE CHINESE GOVERNMENT REPRESENTATIVE, MR JIANG ENZHU, VICE FOREIGN MINISTER OF THE PEOPLE'S REPUBLIC OF CHINA, WILL HOLD THEIR NINTH ROUND OF TALKS IN BEIJING ON 16 AND 17 AUGUST 1993 ON THE ARRANGEMENTS FOR THE 1994/95 ELECTIONS IN HONG KONG IN ACCORDANCE WITH THE SINO-BRITISH JOINT DECLARATION, THE PRINCIPLE OF CONVERGENCE WITH THE BASIC LAW AND THE RELEVANT AGREEMENTS AND UNDERSTANDINGS REACHED BETWEEN BRITAIN AND CHINA.

- - - - 0 - - - -

GOVERNOR WILL HAVE EXTENSIVE DISCUSSIONS IN LONDON

* * * * *

THE GOVERNOR, THE RT HON CHRISTOPHER PATTEN, WILL BE HAVING EXTENSIVE DISCUSSIONS WHEN HE VISITS LONDON NEXT WEEK.

MR PATTEN WILL HAVE MEETINGS WITH THE SECRETARY OF STATE FOR FOREIGN AND COMMONWEALTH AFFAIRS, MR DOUGLAS HURD, MINISTERS AND OTHER OFFICIALS THERE.

"THE PURPOSE OF MY MEETING WITH DOUGLAS HURD AND OTHER OFFICIALS IS TO HAVE A REGULAR EXCHANGE ON HONG KONG, TO REVIEW THE PROGRESS THAT WE'VE BEEN MAKING IN THE TALKS ON POLITICAL DEVELOPMENT, AND TO AGREE ON THE STRATEGY FOR THE FUTURE.

"BUT OBVIOUSLY, I'D LIKE TO TAKE REGULAR OPPORTUNITIES OF MEETING MR HURD AND OTHER SENIOR OFFICIALS AND MINISTERS, AND I'LL BE HAVING QUITE EXTENSIVE DISCUSSIONS WHEN I AM IN LONDON," THE GOVERNOR TOLD REPORTERS AFTER OPENING THE CHARTER FOR YOUTH PROMULGATION CONFERENCE TODAY (THURSDAY).

MR PATTEN WILL TRAVEL TO LONDON ON JULY 27. HE WILL MEET MR HURD ON JULY 29 BEFORE STARTING HIS ANNUAL LEAVE. HE WILL RETURN TO HONG KONG ON AUGUST 31.

- - - - 0 - - - -

GOVT SUPPORTS CHARTER FOR YOUTH

* * * * *

THE GOVERNOR, THE RT HON CHRISTOPHER PATTEN, PROCLAIMES THAT THE GOVERNMENT SUBSCRIBES TO THE CHARTER FOR YOUTH AND WILL WORK TO ENSURE THAT THE GOALS SET OUT IN THE CHARTER ARE MET.

SPEAKING AT THE CHARTER'S PROMULGATION CONFERENCE TODAY (THURSDAY), MR PATTEN SAID YOUNG PEOPLE MUST BE GIVEN THE HOPE, SKILLS AND OPPORTUNITIES TO MAKE HONG KONG'S NEXT 50 YEARS AS SUCCESSFUL AS THEIR PARENTS HAD MADE THE LAST 50 YEARS.

ALMOST ONE-THIRD OF THE POPULATION IS YOUNG PEOPLE AGED BETWEEN 10 AND 29.

"THEY ARE THE GENERATION THAT WILL LIVE THEIR LIVES AND LEAD THEIR CAREERS VERY LARGELY IN THE HONG KONG SPECIAL ADMINISTRATIVE REGION," HE SAID.

"ONLY THOSE COMMUNITIES THAT RESPOND DYNAMICALLY TO ECONOMIC AND SOCIAL DEVELOPMENTS OFFER THEIR CITIZENS THE GREATEST OPPORTUNITIES FOR FULFILMENT, AND, IN RETURN, BENEFIT FROM THE COMMITMENT AND THE SUPPORT OF THEIR CITIZENS," MR PATTEN SAID.

THE CHARTER FOR YOUTH SETS OUT THE PRINCIPLES THAT WILL BE FOLLOWED TO ALLOW YOUNG PEOPLE TO DEVELOP THEMSELVES AS INDIVIDUALS AND IN THEIR ROLE IN THE COMMUNITY, AND THE PRINCIPLES FOR THE COMMUNITY TO PROVIDE SUPPORT TO YOUNG PEOPLE.

MR PATTEN SAID THE COMMISSION ON YOUTH HAD WORKED HARD TO ENSURE THAT THE PRINCIPLES SET OUT IN THE CHARTER MEET THE SOCIAL ASPIRATIONS AND THE NEEDS OF YOUNG PEOPLE:

- * FAMILY WELFARE POLICY WILL AIM TO PRESERVE AND STRENGTHEN THE FAMILY TO PROVIDE THE CARE AND THE EXAMPLE OF LOVING RELATIONSHIPS THAT YOUNG PEOPLE NEED.
- * HONG KONG CAN BE PROUD OF THE EXTENT OF EDUCATIONAL OPPORTUNITY AVAILABLE TO YOUNG PEOPLE, BUT THERE IS MUCH TO BE DONE TO IMPROVE THE QUALITY OF TEACHING AT PRIMARY AND SECONDARY LEVEL.
- * A TREMENDOUS RANGE OF VOLUNTARY AND FULL-TIME SOCIAL WORK ORGANISATIONS PROVIDE VARIETIES OF OUTLETS AND ACTIVITIES FOR YOUNG PEOPLE.

EARLIER, THE CHAIRMAN OF THE COMMISSION ON YOUTH, MR ERIC LI KA-CHEUNG, CALLED ON MEMBERS OF THE PUBLIC, ESPECIALLY YOUNG PEOPLE, TO SUPPORT THE DOCUMENT WHICH HAS AN IMPORTANT BEARING ON THE FUTURE DEVELOPMENT OF YOUTHS IN HK.

"NOW THAT THE GOVERNMENT HAS TAKEN THE LEAD TO SUPPORT THE DOCUMENT BY BECOMING THE FIRST SUBSCRIBER, WE HOPE THE CHARTER WOULD BE IMPLEMENTED TO THE FULL.

THURSDAY, JULY 22, 1993

- 3 -

"WITH THE SOLIDARITY AND UNFAILING EFFORTS OF ALL SUBSCRIBERS, WE WILL BUILD OUR YOUNG PEOPLE INTO MATURE AND RESPONSIBLE CITIZENS, READY TO FACE LIFE CHALLENGES AHEAD OF THEM," HE SAID.

MORE THAN 260 ORGANISATIONS AND SOME 150 INDIVIDUALS, INCLUDING GOVERNMENT OFFICIALS, LEGISLATORS AND PROMINENT PUBLIC PERSONALITIES, HAVE ALSO PLEDGED THEIR SUPPORT FOR THE CHARTER.

- - - - 0 - - - -

GOVERNOR MEETS DISTRICT BOARD MEMBERS

* * * * *

THE GOVERNOR, THE RT HON CHRISTOPHER PATTEN, TODAY (THURSDAY) MET A GROUP OF DISTRICT BOARD MEMBERS TO HEAR THEIR VIEWS ON HONG KONG'S POLITICAL DEVELOPMENT AND A RANGE OF LIVELIHOOD ISSUES.

MR PATTEN SAID HE WAS GRATEFUL FOR THEIR VIEWS AND SAID IT WAS IMPORTANT THAT SUCH DIALOGUE CONTINUE.

"IT IS VITAL IN AN OPEN SOCIETY LIKE HONG KONG THAT THE GOVERNMENT LISTEN TO ALL STRANDS OF PUBLIC OPINION.

"ALTHOUGH THERE HAS BEEN STRONG MAJORITY SUPPORT IN THE COMMUNITY FOR THE GOVERNMENT'S PROPOSALS FOR THE 1994/95 ELECTIONS AND THE THROUGH TRAIN, IT IS IMPORTANT TO LISTEN TO OTHER VIEWS."

MR PATTEN CONGRATULATED THE GROUP ON THEIR RECENT VISIT TO PEKING WHERE THEY MET CHINESE OFFICIALS.

HE SAID SUCH MEETINGS WERE IMPORTANT IN KEEPING THE CHINESE GOVERNMENT IN TOUCH WITH THE FULL RANGE OF HONG KONG OPINION.

HE ADDED THAT PERHAPS THE DISTRICT BOARD MEMBERS WOULD AGREE THAT CHINESE OFFICIALS MIGHT FIND IT USEFUL TO MEET THE MANY OTHER POLITICAL GROUPS IN HONG KONG, INCLUDING THE UNITED DEMOCRATS OF HONG KONG, WITH WHICH THEY MIGHT NOT HAVE AN IDENTITY OF VIEWS.

THE DISTRICT BOARD MEMBERS PRESENTED THEIR VIEWS ON A RANGE OF LIVELIHOOD ISSUES AND THE GOVERNOR UNDERTOOK TO CONSIDER THESE AND RESPOND IN WRITING.

HE ALSO UNDERTOOK TO LET THE DISTRICT BOARD MEMBERS HAVE A SUMMARY OF PUBLISHED PUBLIC OPINION POLLS IN RECENT MONTHS.

- - - - 0 - - - -

THURSDAY, JULY 22, 1993

- 4 -

PHASED PROGRAMME TO APPLY FOR BN(O) PASSPORTS
* * * * *

THE GOVERNMENT ANNOUNCED TODAY (THURSDAY) THE DETAILED ARRANGEMENTS FOR THE PHASED PROGRAMME FOR ELIGIBLE PERSONS TO APPLY FOR BN(O) PASSPORTS.

IN ORDER TO ENSURE ALL HONG KONG BRITISH DEPENDENT TERRITORIES CITIZENS (BDTCS) WHO WISH TO CONTINUE TO TRAVEL ON BRITISH PASSPORTS BEYOND 1997 WILL RECEIVE BRITISH NATIONAL (OVERSEAS) (BN(O)) PASSPORTS BEFORE JULY 1, 1997, THE BRITISH PARLIAMENT HAD ON JULY 20, THIS YEAR APPROVED THE HONG KONG (BRITISH NATIONALITY) (AMENDMENT) ORDER 1993 WHICH IMPOSES CUT-OFF DATES FOR BN(O) PASSPORT APPLICATIONS ACCORDING TO AGE GROUPS.

THE CUT-OFF DATES AS SPECIFIED IN THE 1993 ORDER ARE AS FOLLOWS:

PHASE	YEAR OF BIRTH OF BDTCS	FINAL DATE FOR RECEIPT OF APPLICATIONS
1	1967 TO 1971	OCTOBER 30, 1993
2	1962 TO 1966	MARCH 31, 1994
3	1957 TO 1961	AUGUST 31, 1994
4	1947 TO 1956	FEBRUARY 28, 1995
5	PRIOR TO 1947	JUNE 30, 1995
6	1972 TO 1976	OCTOBER 31, 1995
7	1977 TO 1981	MARCH 30, 1996
8	1982 TO 1986	JUNE 29, 1996
9	1987 TO 1991	SEPTEMBER 30, 1996
10	1992 TO 1995	DECEMBER 31, 1996
11	1996	MARCH 31, 1997
12	1997 (BEFORE JULY 1)	SEPTEMBER 30, 1997

ELIGIBLE APPLICANTS BORN BETWEEN 1967 AND 1971 WHO BELONG TO THE FIRST PHASE MUST SUBMIT THEIR APPLICATIONS ON OR BEFORE OCTOBER 30, THIS YEAR.

ONLY IN SPECIAL CIRCUMSTANCES WILL AN APPLICATION MADE AFTER THE RELEVANT FINAL DATE BE ACCEPTED.

THOSE WHO DO NOT COMPLY WITH THE RELEVANT CUT-OFF DATES WILL NOT BE ABLE TO TRAVEL ON BRITISH PASSPORTS BEYOND 1997.

TO SAVE TIME IN QUEUING UP AT IMMIGRATION OFFICES, ELIGIBLE APPLICANTS ARE ADVISED TO SEND IN THEIR APPLICATIONS BY POST OR MAKE USE OF THE DROP-IN BOX SERVICE.

DROP-IN BOXES ARE INSTALLED AT THE IMMIGRATION HEADQUARTERS AND BRANCH OFFICES THROUGHOUT THE TERRITORY.

ONLY BDTCS WHO ARE NOT HOLDING PERMANENT IDENTITY CARDS, WHO HAVE LOST THEIR PREVIOUS PASSPORTS, OR WHO NEED THE PASSPORT FOR URGENT TRAVEL SHOULD APPLY IN PERSON. THOSE ALREADY HOLDING BN(O) PASSPORTS NEED NOT APPLY AGAIN.

/HONG KONG

HONG KONG BDTCS LIVING, WORKING OR STUDYING ABROAD, ARE ALSO REQUIRED TO OBSERVE THE CUT-OFF DATES IF THEY WANT TO APPLY FOR A BN(O) PASSPORT.

HOWEVER, THEY ARE NOT REQUIRED TO RETURN TO HONG KONG FOR THEIR APPLICATIONS. THEY SHOULD SUBMIT THEIR APPLICATIONS TO THE NEAREST BRITISH PASSPORT ISSUING OFFICE EITHER BY POST OR IN PERSON. THE REQUIRED OVERSEAS APPLICATION FORMS ARE OBTAINABLE FROM THOSE OFFICES.

TO ENSURE THAT ALL ELIGIBLE PERSONS ARE AWARE OF THE ARRANGEMENTS AND THE CUT-OFF DATES, AN INTENSIVE PUBLICITY CAMPAIGN HAS ALREADY BEEN LAUNCHED BOTH IN HONG KONG AND OVERSEAS.

THE GOVERNMENT IS ALSO CONSIDERING SETTING UP AN APPEAL PANEL TO ADVISE THE GOVERNOR ON THOSE LATE APPLICATIONS WHICH HAVE BEEN REJECTED BY THE IMMIGRATION DEPARTMENT.

AS PROVIDED BY THE 1993 ORDER, PERSONS WHO ARE NATURALISED OR REGISTERED AS HONG KONG BDTCS AFTER THEIR RESPECTIVE CUT-OFF DATES WILL BE GIVEN AN ADDITIONAL THREE MONTHS WITHIN WHICH THEY MAY APPLY FOR REGISTRATION AS BN(O)S.

TO ENSURE THAT ALL BN(O) PASSPORT APPLICATIONS CAN BE FINALISED BEFORE 1997, THE ORDER ALSO PRESCRIBES THAT APPLICATIONS FOR NATURALISATION AND REGISTRATION AS HONG KONG BDTCS MUST BE MADE ON OR BEFORE MARCH 31, 1996. LATE APPLICATIONS WILL NOT BE ACCEPTED.

- - - - 0 - - - -

CONSUMER PRICE INDICES FOR JUNE

* * * * *

THE CONSUMER PRICE INDEX (A) IN JUNE WAS 8.6% HIGHER THAN IN THE SAME MONTH LAST YEAR, ACCORDING TO FIGURES RELEASED TODAY (THURSDAY) BY THE CENSUS AND STATISTICS DEPARTMENT.

THIS WAS NEARLY THE SAME AS THE CORRESPONDING INCREASE OF 8.5% IN MAY.

COMMENTING ON THE LATEST CPI FIGURES, THE FINANCIAL SECRETARY, MR HAMISH MACLEOD, SAID CONSUMER PRICE INFLATION HAD STABILISED IN RECENT MONTHS.

"ALTHOUGH FOOD PRICES HAD RISEN FASTER IN JUNE, THERE WERE LESS RAPID PRICE INCREASES FOR A NUMBER OF OTHER ITEMS. IT IS ENCOURAGING TO SEE THAT THE MODERATION IN CONSUMER PRICE INFLATION WAS NOT NARROWLY BASED," HE SAID.

"THE YEAR-ON-YEAR RATE OF INCREASE IN THE CPI(A) AVERAGED 8.5% IN THE FIRST HALF OF 1993. THIS IS LOWER THAN OUR FORECAST OF 9.5% FOR THE YEAR AS A WHOLE" HE ADDED.

THE CPI(B) AND THE HANG SENG CPI WERE HIGHER BY 8.7% AND 9.5% RESPECTIVELY IN JUNE THAN IN THE SAME MONTH LAST YEAR. THE CORRESPONDING INCREASES IN MAY WERE 8.8% AND 9.8%.

THE SLOWER YEAR-ON-YEAR RATES OF INCREASE IN THE CPI(B) AND THE HANG SENG CPI IN JUNE THAN IN MAY WAS MAINLY DUE TO MORE MODERATE INCREASES IN THE RENT FOR PRIVATE DWELLINGS AND CHARGES FOR MEALS AT RESTAURANTS, WHICH MORE THAN OFFSET THE EFFECT OF HIGHER PRICES OF FRESH VEGETABLES.

THE COMPOSITE CPI, WHICH WAS COMPILED BASED ON THE COMBINED EXPENDITURE PATTERN OF HOUSEHOLDS COVERED BY THE THREE CPIS, SHOWED AN INCREASE OF 8.8% IN JUNE OVER THE SAME MONTH LAST YEAR, WHICH WAS ALSO MARGINALLY SLOWER THAN THE INCREASE OF 8.9% IN MAY.

COMPARING JUNE 1993 WITH JUNE 1992, RELATIVELY SLOWER INCREASES IN PRICES WERE RECORDED FOR DURABLE GOODS (1.6% IN THE CPI(A) AND 1.5% IN THE CPI(B)); FUEL AND LIGHT (3.2% AND 3.1%); MISCELLANEOUS GOODS (7.3% AND 6.6%); FOOD EXCLUDING MEALS AT RESTAURANTS (7.3% AND 6.7%); AND CLOTHING AND FOOTWEAR (7.4% AND 8.0%).

ON THE OTHER HAND, RELATIVELY FASTER INCREASES IN PRICES WERE RECORDED FOR HOUSING (12.4% IN THE CPI(A) AND 12.9% IN THE CPI(B)); ALCOHOLIC DRINKS AND TOBACCO (9.6% AND 8.9%); AND TRANSPORT (9.0% AND 8.3%).

AS FOR MEALS AT RESTAURANTS AND SERVICES, THEIR CORRESPONDING INCREASES WERE 8.5% AND 8.4% IN THE CPI(A) AND 8.5% AND 7.7% IN THE CPI(B).

COMPARING JUNE 1993 WITH MAY 1993, THE CPI(A) AND CPI(B) INCREASED BY 1.1% AND 0.8% RESPECTIVELY. THIS COMPARISON WAS, HOWEVER, AFFECTED BY SEASONAL FACTORS.

IN THE SECOND QUARTER OF 1993, THE CPI(A) WAS, ON AVERAGE, HIGHER BY 8.2% THAN IN THE SAME QUARTER LAST YEAR. THE CORRESPONDING FIGURE FOR THE CPI(B) WAS 8.7%.

IN THE FIRST HALF OF 1993, THE CPI(A) AND CPI(B) WERE, ON AVERAGE, HIGHER BY 8.5% AND 9.0% RESPECTIVELY THAN IN THE FIRST HALF OF 1992.

FOR THE 12 MONTHS ENDING JUNE 1993, THE CPI(A) AND CPI(B) WERE, ON AVERAGE, HIGHER BY 8.8% AND 9.3% RESPECTIVELY THAN IN THE PRECEDING 12-MONTH PERIOD.

SEASONALLY ADJUSTED SERIES ARE ALSO AVAILABLE FOR THE INDICES. THE DESEASONALISED CPI(A) AND CPI(B) INCREASED AT AN AVERAGE RATE OF 0.9% AND 0.8% RESPECTIVELY PER MONTH DURING THE THREE MONTHS ENDING JUNE 1993.

THURSDAY, JULY 22, 1993

- 7 -

THE CONSUMER PRICE INDEX REPORT

MORE DETAILS ARE GIVEN IN THE "CONSUMER PRICE INDEX REPORT" FOR JUNE 1993, WHICH IS AVAILABLE AT \$12 A COPY FROM:

* THE GOVERNMENT PUBLICATIONS CENTRE, GENERAL POST OFFICE BUILDING, GROUND FLOOR, CONNAUGHT PLACE, HONG KONG; OR

* THE PUBLICATIONS SECTION OF THE CENSUS AND STATISTICS DEPARTMENT, 19TH FLOOR, WANCHAI TOWER, 12 HARBOUR ROAD, WAN CHAI, HONG KONG.

FOR LOCAL AND OVERSEAS MAILINGS, CONTACT SHOULD BE MADE WITH THE INFORMATION SERVICES DEPARTMENT, FRENCH MISSION BUILDING, 1 BATTERY PATH, HONG KONG.

FOR ENQUIRIES ABOUT THE INDICES, PLEASE TELEPHONE THE CONSUMER PRICE INDEX SECTION OF THE CENSUS AND STATISTICS DEPARTMENT ON 805 6403. DETAILS REGARDING THE HANG SENG CPI ARE CONTAINED IN THE HANG SENG CPI REPORT ISSUED BY THE ECONOMIC RESEARCH DEPARTMENT OF HANG SENG BANK LTD.

/TABLE 1

Table 1 Consumer Price Indices and Rates of Increase for June 1993
(Oct. 89 - Sep. 90 = 100)

Component	CPI(A)		CPI(B)		Hang Seng CPI		Composite CPI	
	Index for Jun 93	% change over Jun 92	Index for Jun 93	% change over Jun 92	Index for Jun 93	% change over Jun 92	Index for Jun 93	% change over Jun 92
Food	134.6	+7.9	135.3	+7.8	134.5	+8.2	134.8	+7.9
Meals bought away from home	140.2	+8.5	140.0	+8.5	137.5	+9.3	139.5	+8.7
Food, excluding meals bought away from home	129.0	+7.3	128.7	+6.7	129.3	+6.4	129.0	+6.9
Housing	146.7	+12.4	147.7	+12.9	149.6	+13.9	148.0	+13.0
Fuel and light	119.7	+3.2	119.1	+3.1	119.4	+3.5	119.4	+3.2
Alcoholic drinks and tobacco	177.0	+9.6	167.3	+8.9	163.2	+8.8	171.6	+9.3
Clothing and footwear	129.1	+7.4	130.8	+8.0	141.7	+9.5	134.1	+8.4
Durable goods	109.1	+1.6	108.7	+1.5	114.7	+4.0	110.6	+2.3
Miscellaneous goods	123.7	+7.3	121.8	+6.6	121.1	+6.5	122.3	+6.8
Transport	136.4	+9.0	135.3	+8.3	135.5	+7.8	135.7	+8.4
Services	138.4	+8.4	135.5	+7.7	129.9	+6.5	134.7	+7.6
All items	136.0	+8.6	135.9	+8.7	137.1	+9.5	136.3	+8.8

The 1989/90-based consumer price indices are based on the expenditure patterns derived from the 1989/90 Household Expenditure Survey. The CPI(A) is based on the expenditure pattern of about 50% of urban households in Hong Kong, which had an average monthly expenditure of \$2,500-\$9,999 in 1989/90. The CPI(B) is based on the expenditure pattern of the next 30% of urban households, which had an average monthly expenditure of \$10,000-\$17,499 in the same period. The Hang Seng CPI is based on the expenditure pattern of the next 10% of urban households, which had an average monthly expenditure of \$17,500-\$37,499 in 1989/90.

Whereas the CPI(A), CPI(B) and Hang Seng CPI are based on the expenditure patterns of groups of households with different magnitudes of household expenditure, the Composite CPI is compiled based on the expenditure pattern of all these households taken together. Thus, while the CPI(A), CPI(B) and Hang Seng CPI show the impact of consumer price changes on different groups of households, the Composite CPI shows the impact of consumer price changes on the household sector generally.

Table 2 Consumer Price Indices for January 1991 - June 1993
(Oct. 89 - Sep. 90 = 100)

<u>Year/month</u>	<u>CPI (A)</u>	<u>CPI (B)</u>	<u>Hang Seng CPI</u>	<u>Composite CPI</u>
1991 January	108.3	108.4	108.6	108.4
February	110.3	110.1	110.2	110.2
March	111.9	111.1	110.7	111.3
April	113.9	113.0	112.0	113.1
May	114.0	113.6	113.4	113.7
June	114.6	114.1	113.9	114.2
July	115.4	114.8	113.9	114.8
August	116.0	115.3	114.6	115.4
September	116.8	116.1	115.8	116.3
October	117.2	116.8	117.4	117.1
November	117.7	117.6	118.7	117.9
December	118.1	118.3	118.5	118.3
1992 January	119.7	119.3	119.4	119.5
February	121.8	121.2	121.0	121.4
March	122.5	121.9	121.8	122.1
April	124.0	123.4	122.9	123.5
May	124.0	123.8	124.2	124.0
June	125.3	125.1	125.2	125.2
July	125.5	125.4	125.4	125.4
August	125.6	125.9	125.8	125.8
September	128.3	127.9	127.5	128.0
October	128.4	128.4	128.6	128.5
November	128.5	129.0	129.9	129.0
December	129.3	129.8	130.0	129.7
1993 January	131.8	131.6	131.5	131.7
February	132.4	132.2	132.0	132.2
March	132.0	132.2	133.1	132.4
April	133.5	133.9	134.5	133.9
May	134.5	134.8	136.3	135.1
June	136.0	135.9	137.1	136.3

Chart 1 Year-on-year Rates of Increase in CPI(A)

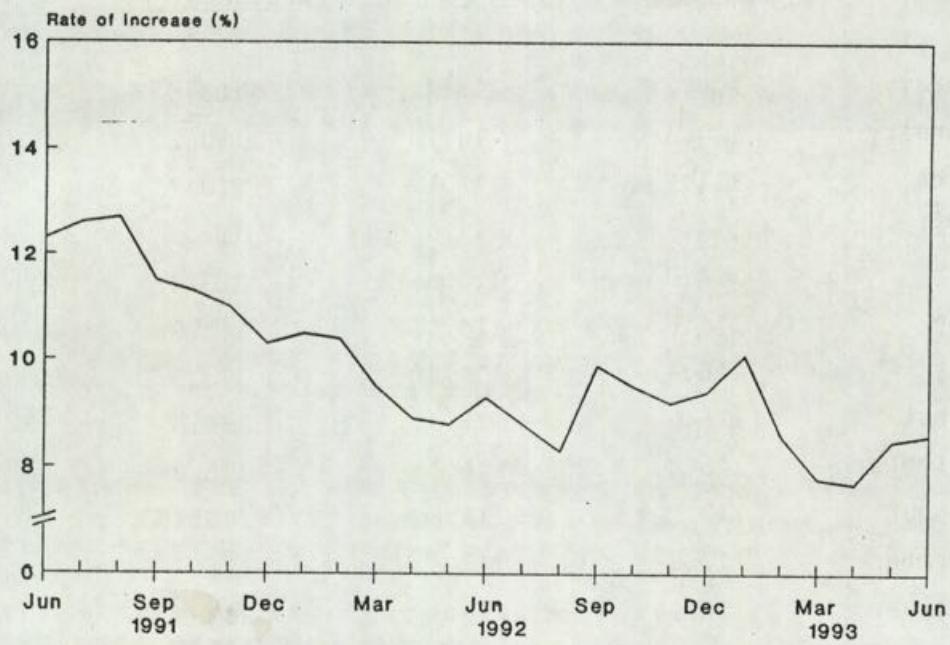


Chart 2 Year-on-year Rates of Increase in CPI(B)

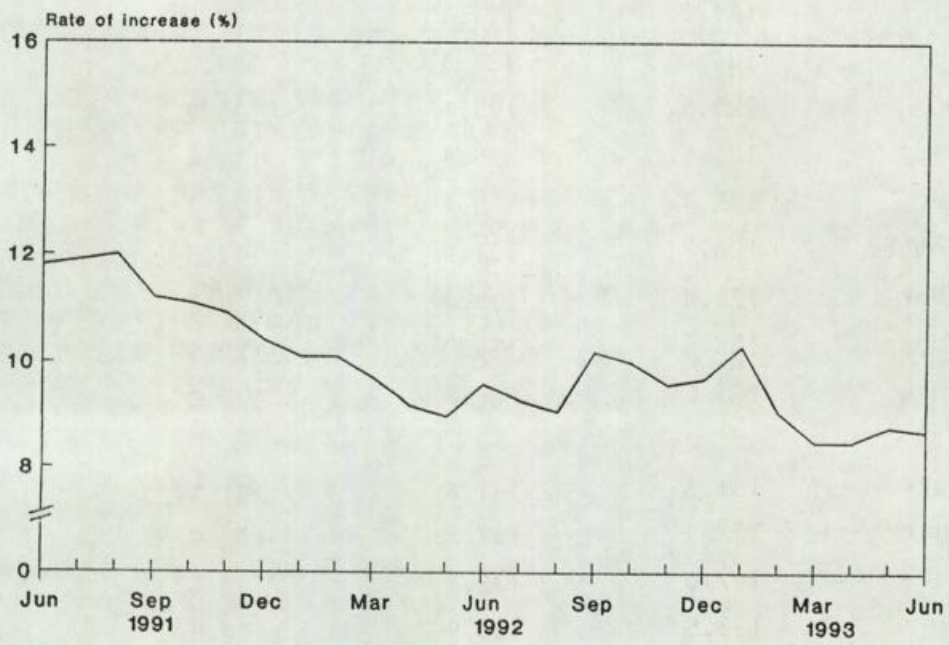


Chart 3 Year-on-year Rates of Increase in Hang Seng CPI

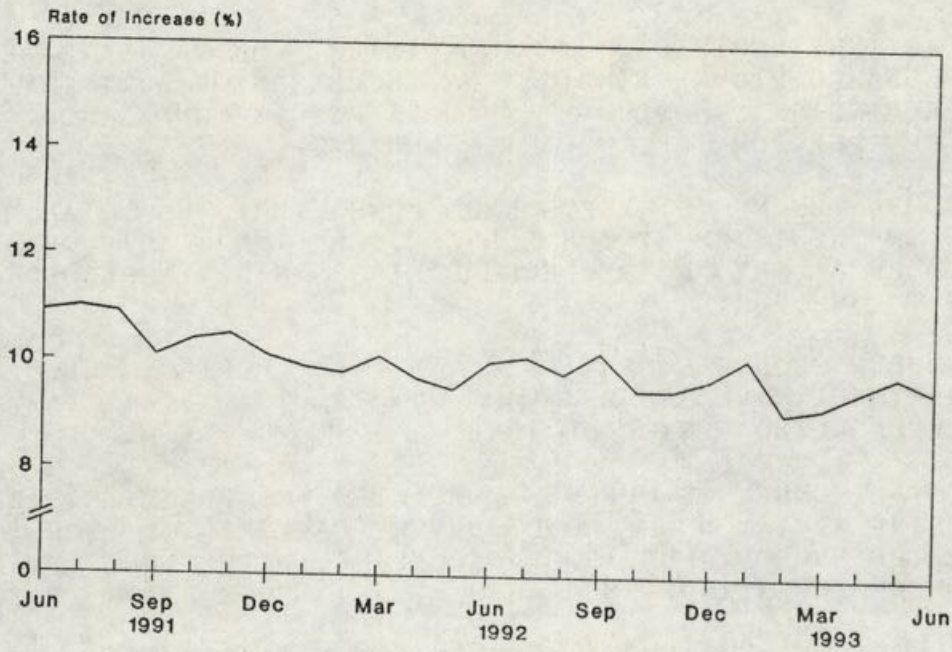
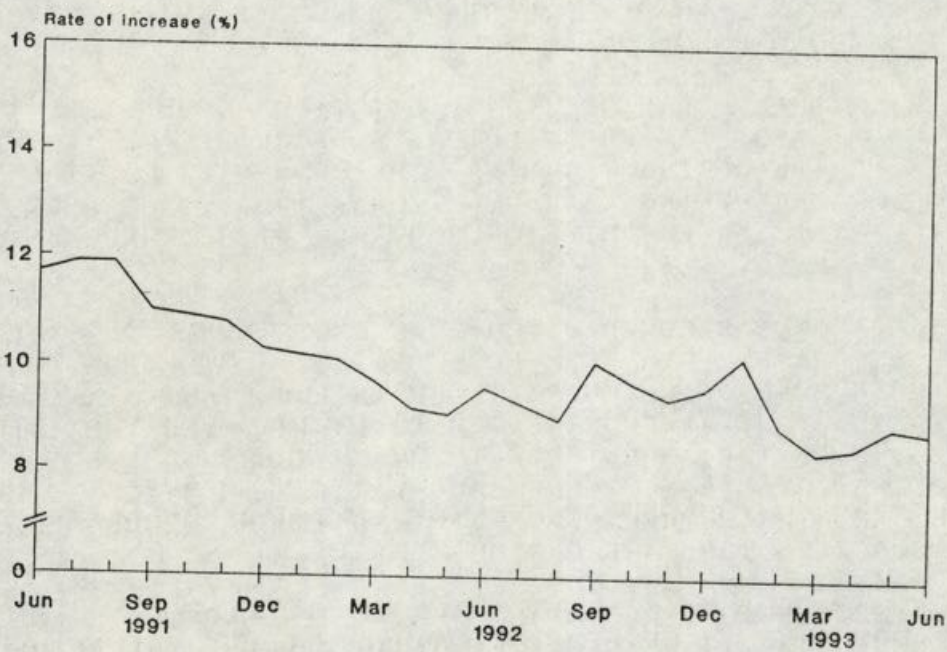


Chart 4 Year-on-year Rates of Increase in Composite CPI



COMPANIES REGISTRY FIGURES FOR FIRST HALF YEAR RELEASED

* * * * *

THE ACTING REGISTRAR OF COMPANIES, MR A H PATEL, TODAY (THURSDAY) RELEASED FIGURES INDICATING INCREASES OF ACTIVITY IN MOST AREAS FOR THE FIRST SIX MONTHS OF THIS YEAR BY COMPARISON WITH THE SAME PERIOD OF 1992 FOR THE COMPANIES REGISTRY.

THE COMPANIES REGISTRY FIGURES SHOWED THAT THE TOTAL NUMBER OF COMPANIES ON THE REGISTER AT THE END OF JUNE 1993 AS COMPARED WITH THE TOTAL NUMBER AT THE END OF DECEMBER 1992 HAD INCREASED BY 8.8% FROM 358,129 TO 389,688.

THE NUMBER OF NEW COMPANIES REGISTERED DURING THE FIRST SIX MONTHS OF 1993 HAD INCREASED 26% FROM 26,472 TO 33,477 AS COMPARED WITH THE CORRESPONDING PERIOD OF 1992.

THE TOTAL NUMBER OF OVERSEA COMPANIES WHICH HAD ESTABLISHED A PLACE OF BUSINESS IN HONG KONG UNDER PART XI OF THE COMPANIES ORDINANCE AT THE END OF JUNE 1993 AS COMPARED WITH THE TOTAL NUMBER AT THE END OF DECEMBER 1992 INCREASED BY 4.4% FROM 3,193 TO 3,334.

THE NUMBER OF NEW OVERSEA COMPANIES ESTABLISHING A PLACE OF BUSINESS IN HONG KONG UNDER PART XI DURING THE FIRST SIX MONTHS OF 1993 WAS 224, A DECREASE OF 12% COMPARED WITH THE FIRST SIX MONTHS OF 1992.

NO SEPARATE STATISTICS ARE MAINTAINED ON HOW MANY OVERSEA COMPANIES INCORPORATE LOCAL SUBSIDIARIES OR TAKE UP A MAJORITY SHAREHOLDING IN A HONG KONG COMPANY.

IN THE FIRST HALF YEAR OF 1993 EXISTING COMPANIES INCREASED THEIR NOMINAL CAPITAL BY \$19,392 MILLION, A DECREASE OF 11% COMPARED WITH THE SAME PERIOD OF 1992, WHILE THE NOMINAL CAPITAL OF NEW COMPANIES INCORPORATED DURING JANUARY - JUNE 1993 INCREASED BY 86% FROM \$1,987 MILLION TO \$3,704 MILLION COMPARED WITH THE SAME PERIOD IN 1992.

THE TOTAL AMOUNT SECURED BY CHARGES REGISTERED ON THE ASSETS OF COMPANIES DECREASED BY 38% FROM \$47,234 MILLION TO \$29,377 MILLION, AND THE NUMBER OF CHARGES FILLED IN THE FIRST SIX MONTHS OF 1993 HAD DECREASED BY 9.7 % FROM 16,758 TO 15,134 OVER THE FIRST SIX MONTHS OF 1992, WHILE THE AMOUNT REPAID ON CHARGES, AS EVIDENCED BY CERTIFICATES OF SATISFACTION, INCREASED BY 23% FROM \$5,231 MILLION TO \$6,450 MILLION, AND THE NUMBER OF CERTIFICATES HAD DECREASED BY 11% FROM 9,631 TO 8,558 IN THE SAME PERIOD.

DURING THE PERIOD, A TOTAL OF 78 PROSPECTUSES OF PUBLIC COMPANIES, INCLUDING 34 IN RESPECT OF MUTUAL FUNDS, WERE REGISTERED AS AGAINST 92 PROSPECTUSES, INCLUDING 31 IN RESPECT OF MUTUAL FUNDS, DURING THE CORRESPONDING PERIOD IN 1992.

THE NUMBER OF DOCUMENTS RECEIVED FOR FILING DURING THE FIRST SIX MONTHS OF 1993 AS COMPARED WITH THAT FOR THE SAME PERIOD IN 1992 INCREASED BY 8% FROM 616,230 TO 666,497.

THE NUMBER OF SEARCHES MADE UNDER THE MICROFILM SYSTEM DURING THE FIRST SIX MONTHS OF 1993 AS COMPARED WITH THAT FOR THE SAME PERIOD IN 1992 INCREASED BY 10% FROM 783,976 TO 861,977.

THE TOTAL NUMBER OF SUMMONSES ISSUED BY THE REGISTRAR OF COMPANIES AGAINST COMPANIES AND THEIR DIRECTORS FOR BREACHES OF THE COMPANIES ORDINANCE, MAINLY FOR FAILURE TO FILE ANNUAL RETURNS WITH ACCOUNTS, IN THE FIRST SIX MONTHS OF 1993 WAS 101, COMPARED WITH 66 DURING THE SAME PERIOD IN 1992.

DURING THE PERIOD, TWO SUMMONSES WERE WITHDRAWN (FOR EXAMPLE, BECAUSE OF NON-SERVICE), 68 RESULTED IN CONVICTIONS COMPARED WITH 41 IN THE SAME PERIOD OF 1992 AND 28 REMAIN TO BE HEARD BY THE COURT (48 IN THE SAME PERIOD OF 1992).

THE TOTAL AMOUNT OF FINES IMPOSED FOR CONVICTIONS IN THE FIRST HALF YEAR OF 1993 WAS \$283,505, COMPARED WITH \$290,000 IN THE CORRESPONDING PERIOD IN 1992.

THE COMPANIES REGISTRY WAS PREVIOUSLY A DIVISION OF THE REGISTRAR GENERAL'S DEPARTMENT, BUT HAS SINCE MAY 1, 1993 BECOME A SEPARATE GOVERNMENT DEPARTMENT. THE REGISTRAR OF COMPANIES ALSO OPERATES THE MONEY LENDERS REGISTRY.

- - - - 0 - - - -

UNITED NATIONS SANCTIONS AGAINST HAITI
* * * * *

ON JUNE 16, THE UNITED NATIONS SECURITY COUNCIL ADOPTED RESOLUTION 841 IMPOSING A RANGE OF SANCTIONS AGAINST HAITI.

THE RESOLUTION CAME INTO FORCE ON JUNE 23.

SPECIFIC POWERS FOR THE BETTER IMPLEMENTATION OF THE RESOLUTION BY THE HONG KONG GOVERNMENT HAVE BEEN PROVIDED IN A UNITED KINGDOM ORDER IN COUNCIL WHICH COMES INTO FORCE ON JULY 22.

THE ORDER IMPOSES RESTRICTIONS ON THE EXPORT TO HAITI AND THE SUPPLY TO PERSONS CONNECTED WITH HAITI OF ARMS AND RELATED MATERIAL, AND PETROLEUM AND PETROLEUM PRODUCTS.

IT RESTRICTS CERTAIN RELATED ACTIVITIES INCLUDING THE CARRIAGE OF PROHIBITED GOODS IN SHIPS, AIRCRAFT AND VEHICLES.

THE ORDER ALSO PLACES RESTRICTIONS ON CERTAIN ACTIONS MAKING AVAILABLE OR OTHERWISE TRANSFERRING FUNDS OR OTHER FINANCIAL OR ECONOMIC RESOURCES TO OR FOR THE BENEFIT OF THE DE FACTO AUTHORITIES IN HAITI.

THE GOVERNMENT WILL TAKE ALL NECESSARY MEASURES TO IMPLEMENT FULLY OUR OBLIGATIONS UNDER THE ORDER IN COUNCIL.

ENQUIRIES ON THE SUBJECT SHOULD BE DIRECTED TOWARDS THE RESPECTIVE GOVERNMENT DEPARTMENT AS FOLLOWS:

GENERAL AND PRESS ENQUIRIES:
DUTY OFFICER, GOVERNMENT INFORMATION SERVICES
(TEL NO: 842 8747)

TRADE RELATED MATTERS:
TRADE DEPARTMENT
(TEL NO: 398 5556 OR 398 5572)
CUSTOMS & EXCISE DEPARTMENT
(TEL NO: 852 3303)

MARINE MATTERS:
MARINE DEPARTMENT
(TEL NO: 852 4402)

FLIGHTS & AVIATION RELATED MATTERS:
CIVIL AVIATION DEPARTMENT
(TEL NO: 867 4210 OR 867 4211)

FINANCIAL RELATED MATTERS
FINANCIAL SERVICES BRANCH
(TEL NO: 528 2139 OR 527 1893)

- - - - 0 - - - -

CONTROLS ON IMPORTS AND EXPORTS OF OZONE DEPLETING SUBSTANCES
* * * * *

IMPORTS AND EXPORTS OF 1,1,1-TRICHLOROETHANE, 10 OTHER CFCS AND CARBON TETRACHLORIDE FROM AND TO NON-PARTIES OF THE MONTREAL PROTOCOL ON SUBSTANCES THAT DEplete THE OZONE LAYER WILL BE PROHIBITED WITH EFFECT FROM AUGUST 10 THIS YEAR.

A SPOKESMAN FOR THE ENVIRONMENTAL PROTECTION DEPARTMENT (EPD) SAID HONG KONG HAD BEEN COMPLYING WITH THE REQUIREMENTS OF THE MONTREAL PROTOCOL THROUGH THE LICENSING SYSTEM OPERATING UNDER THE OZONE LAYER PROTECTION ORDINANCE (OLPO) SINCE 1989.

APART FROM THE ORIGINAL FIVE KINDS OF CFCS (CFC-11, 12, 113, 114, AND 115) AND THREE KINDS OF HALONS (1211, 1301 AND 2402), IMPORTS AND EXPORTS OF 1,1,1-TRICHLOROETHANE AND 10 OTHER CFCS HAVE BEEN SUBJECTED TO LICENSING CONTROL OF THE OLPO SINCE JANUARY 1 THIS YEAR.

THE CONTROL WILL BE EXTENDED TO CARBON TETRACHLORIDE WITH EFFECT FROM AUGUST 10 THIS YEAR.

"NO IMPORT OR EXPORT LICENCES UNDER THE OLPO WILL BE ISSUED BY THE TRADE DEPARTMENT FOR CONSIGNMENTS OF THESE CHEMICALS WHICH ORIGINATE FROM OR ARE DESTINED FOR COUNTRIES WHICH ARE NON-PARTIES TO THE PROTOCOL AFTER AUGUST 10," THE SPOKESMAN SAID.

BOTH 1,1,1-TRICHLOROETHANE AND CARBON TETRACHLORIDE ARE MAINLY USED AS SOLVENT IN THE ELECTRONICS AND TEXTILE INDUSTRIES.

SUBSTITUTE CHEMICALS AND ALTERNATIVE PROCESSES ARE AVAILABLE FOR MOST OF THE APPLICATIONS AND THE AFFECTED INDUSTRIES AND IMPORTERS HAVE BEEN CONSULTED AND ADVISED OF THESE ADDITIONAL CONTROLS.

MOREOVER, SINCE MOST OF THESE CHEMICALS USED IN HONG KONG ARE BEING IMPORTED FROM PARTY COUNTRIES, THE EFFECT OF THESE ADDITIONAL CONTROLS ON THE LOCAL INDUSTRIES SHOULD BE MINIMUM.

THE SPOKESMAN SAID STARTING FROM JANUARY 1 THIS YEAR THE ANNUAL CONSUMPTION OF 1,1,1-TRICHLOROETHANE AND THE 10 OTHER CFCS HAD BEEN LIMITED AT 100 PER CENT AND 80 PER CENT OF HONG KONG'S 1989 CONSUMPTION LEVEL RESPECTIVELY.

THE ANNUAL CONSUMPTION OF CARBON TETRACHLORIDE WILL ALSO BE CUT TO 15 PER CENT OF 1989'S CONSUMPTION LEVEL BY 1995.

ACCORDING TO THE REVISED CONTROL SCHEDULE OF THE MONTREAL PROTOCOL AGREED AT COPENHAGEN LAST NOVEMBER, THE RETAINED IMPORTS OF 1,1,1-TRICHLOROETHANE AND 10 OTHER CFCS WILL BE FURTHER CUT TO 50 PER CENT AND 25 PER CENT RESPECTIVELY BY NEXT YEAR.

THESE CHEMICALS, TOGETHER WITH CARBON TETRACHLORIDE, WILL HAVE TO BE COMPLETELY PHASED OUT BY 1996.

ENQUIRIES REGARDING THE REQUIREMENTS OF THE OLPO AND THE CONTROL SCHEDULE OF THE MONTREAL PROTOCOL CAN BE MADE TO THE AIR CONTROL GROUP OF THE EPD ON 33RD FLOOR, REVENUE TOWER, 5 GLOUCESTER ROAD, WAN CHAI OR ON TEL 594 6242 OR 594 6243 DURING OFFICE HOURS.

ENQUIRIES REGARDING THE APPLICATION PROCEDURES FOR REGISTRATION AND IMPORT OR EXPORT LICENSES SHOULD BE MADE TO THE TRADE LICENSING (NON-TEXTILES) BRANCH OF THE TRADE DEPARTMENT ON FOURTH FLOOR, TRADE DEPARTMENT TOWER, 700 NATHAN ROAD, KOWLOON OR ON TEL 398 5559, 398 5560 OR 398 5592.

- - - - 0 - - - -

GOODS FORFEITURE PROCEEDINGS REVISED

* * * * *

THE DUTIABLE COMMODITIES (AMENDMENT) (NO.2) ORDINANCE 1993, WHICH REVISES PROCEEDINGS OF FORFEITURE OF SEIZED GOODS, WILL COME INTO EFFECT TOMORROW (FRIDAY).

A SPOKESMAN FOR THE CUSTOMS AND EXCISE DEPARTMENT SAID THE PURPOSE OF THE ORDINANCE WAS TO REMOVE OPERATIONAL DIFFICULTIES FACING THE COMMISSIONER OF CUSTOMS AND EXCISE IN ENFORCING THE PROVISIONS RELATING TO THE FORFEITURE OF SEIZED GOODS.

"THE PROCEDURES ARE NOW STREAMLINED. THIS WOULD SAVE STAFF TIME AND STORAGE SPACE WITHOUT COMPROMISING THE FAIRNESS OF THE SYSTEM TO THE PUBLIC," THE SPOKESMAN SAID.

THE REVISED PROCEEDINGS PROVIDE THAT THE COMMISSIONER WILL, EXCEPT UNDER CERTAIN CIRCUMSTANCES, GIVE A NOTICE OF SEIZURE WITHIN 30 DAYS TO THE OWNER OF THE SEIZED ARTICLES, IF SUCH ARE SEIZED FOR FORFEITURE.

NO SUCH NOTICE WILL BE GIVEN IF THE ARTICLES ARE SEIZED IN THE PRESENCE OF THE SUSPECTED OFFENDER, THEIR OWNER OR THE OWNER'S EMPLOYEE OR AGENT, OR AN OWNER WHO DOES NOT HAVE A PERMANENT ADDRESS IN HONG KONG.

IF THE COMMISSIONER BELIEVES THAT THE SEIZED ARTICLES ARE STOLEN GOODS, HE WILL SERVE A NOTICE ON THE PERSON WHOM HE BELIEVES TO BE AN OWNER OF THE GOODS.

NOTICE OF SEIZURE WILL NORMALLY BE DELIVERED IN PERSON OR SENT BY REGISTERED POST ADDRESSED TO THE CONCERNED PERSON'S USUAL OR LAST KNOWN PLACE OF ABODE OR BUSINESS.

IF SUCH A NOTICE CANNOT BE DELIVERED, A NOTICE OF THE SEIZURE WILL BE EXHIBITED AT THE PUBLIC WAITING HALL OF THE PERMIT OFFICE, CUSTOMS AND EXCISE DEPARTMENT ON THE FIRST FLOOR OF HARBOUR BUILDING, 38 PIER ROAD, CENTRAL WITHIN 30 DAYS AFTER THE SEIZURE FOR A PERIOD OF SEVEN DAYS.

ANY PERSON WHO CLAIMS THAT THE SEIZED ARTICLES ARE NOT LIABLE TO FORFEITURE SHALL WITHIN 30 DAYS FROM THE DATE OF SEIZURE GIVE A NOTICE OF CLAIM IN WRITING TO THE COMMISSIONER, WHETHER OR NOT A NOTICE OF SEIZURE HAS BEEN SERVED ON HIM.

THE SEIZED ARTICLES ARE DEEMED TO BE FORFEITED IF NO SUCH NOTICE IS RECEIVED BY THE COMMISSIONER ON THE EXPIRATION OF THE 30-DAY PERIOD.

THE NOTICE OF CLAIM SHALL CONTAIN THE CLAIMANT'S OR HIS SOLICITOR'S FULL NAME AND ADDRESS IN HONG KONG. WITHOUT SUCH INFORMATION, THE NOTICE SHALL BE REGARDED AS IF IT HAD NOT BEEN GIVEN.

FORFEITURE PROCEEDINGS AND CRIMINAL PROCEEDINGS AGAINST A DEFENDANT ARE SEPARATE COURT HEARINGS.

WHERE THERE IS A CLAIM AND IF THE CLAIMANT IS THE DEFENDANT AND THERE IS NO OTHER CLAIMANT, THE COMMISSIONER WILL APPLY FOR THE FORFEITURE OF THE SEIZED GOODS IMMEDIATELY FOLLOWING THE HEARING OF THE CRIMINAL PROCEEDINGS. OTHERWISE THIS WILL BE DONE AS SOON AS POSSIBLE.

IN THE LATTER CASE, THE CLAIMANT WILL RECEIVE A SUMMONS ISSUED BY A MAGISTRATE, NOTIFYING HIM THE TIME AND PLACE OF THE HEARING.

IN THE FORFEITURE PROCEEDINGS, THE MAGISTRATE WILL ALSO HEAR REPRESENTATION FROM ANY INTERESTED PARTY WHO HAS NOT BEEN SERVED WITH A NOTICE OF SEIZURE AND WAS NOT PRESENT WHEN THE ARTICLES WERE SEIZED, OR WHOSE IDENTITY WAS NOT KNOWN TO THE COMMISSIONER WHEN THE ARTICLES WERE SEIZED.

WHERE THE SEIZED ARTICLES ARE OF A PERISHABLE NATURE, THE COMMISSIONER IS EMPOWERED TO ORDER THE ARTICLES TO BE SOLD OR DESTROYED.

IF THE ARTICLES ARE OF SUCH A NATURE THAT THEY ARE DIFFICULT TO STORE OR ARE LIKELY TO DETERIORATE BEFORE THE CONCLUSION OF THE FORFEITURE PROCEEDINGS, THE COMMISSIONER CAN APPLY TO A MAGISTRATE FOR THE ARTICLES TO BE SOLD.

IN EITHER CASE, THE COMMISSIONER MAY RETURN THE ARTICLES TO THE OWNER OR A PERSON ENTITLED TO MAKE A CLAIM UPON PAYMENT TO THE COMMISSIONER OF A SECURITY NOT LESS THAN THE VALUE OF SUCH ARTICLES.

IF THE ARTICLES ARE SOLD, THE PROCEEDS OF SALE WILL BE RETAINED BY THE COMMISSIONER PENDING AN ORDER FROM THE MAGISTRATE HEARING THE FORFEITURE APPLICATION.

THE REVISED PROCEEDINGS ALSO PROVIDE FOR THE CLAIMANT TO APPLY TO A MAGISTRATE FOR THE RELEASE OF A SEIZED SHIP, VEHICLE OR AIRCRAFT BEFORE THE HEARING OF THE FORFEITURE APPLICATION.

HOWEVER, IF THE APPLICATION IS GRANTED, HE IS REQUIRED TO FURNISH A SECURITY OF A SUM OF MONEY NOT LESS THAN THE VALUE OF THE SHIP, VEHICLE OR AIRCRAFT, AND ALSO TO PAY THE COST OF ASSESSING THE VALUE OF THE SHIP, VEHICLE OR AIRCRAFT AS ORDERED BY THE MAGISTRATE.

HE IS FURTHER REQUIRED TO REDELIVER THE SHIP, VEHICLE OR AIRCRAFT INTO THE CUSTODY OF THE COMMISSIONER BEFORE THE DATE OF THE HEARING OF THE APPLICATION FOR FORFEITURE.

A CLAIMANT MAY PETITION THE GOVERNOR AGAINST THE DECISION OF THE COURT. IN DOING SO HE SHOULD GIVE A NOTICE IN WRITING TO THE COMMISSIONER WITHIN SIX WEEKS OF THE DECISION AND THEREAFTER LODGE THE PETITION WITH THE CHIEF SECRETARY WITHIN ONE MONTH.

THE SPOKESMAN ALSO SAID THE NEW PROCEDURES WILL SHORTEN THE TIME REQUIRED FOR FORFEITURE PROCEEDINGS FROM AN AVERAGE OF ABOUT 12 MONTHS TO SIX MONTHS.

IT ALSO RECTIFIES THE PRESENT SITUATION IN WHICH AN APPLICATION FOR FORFEITURE CANNOT BE HEARD DUE TO PROCEDURAL PROBLEMS, INCLUDING DIFFICULTIES IN SERVING SUMMONSES TO SOME OF THE CLAIMANTS.

PEOPLE HAVING QUERIES ON THE NEW PROCEDURES CAN CONTACT SENIOR STAFF OFFICER, MR MICHAEL LEE, ON TEL 852 3303.

THURSDAY, JULY 22, 1993

- 18 -

ELECTORAL REGISTRATION FOR 93 PUBLISHED

* * * * *

THE FINAL ELECTORAL REGISTER FOR 1993 HAS BEEN PUBLISHED AND IS AVAILABLE FOR PUBLIC INSPECTION AT THE REGISTRATION AND ELECTORAL OFFICE AND RESPECTIVE DISTRICT OFFICES FROM TOMORROW (FRIDAY).

THE FINAL REGISTER CARRIES 1,944,680 ENTRIES, REPRESENTING A NET INCREASE OF 10,859 ELECTORS OVER 1992.

THE GROSS FIGURES FOR ADDITIONS AND OMISSIONS ARE RESPECTIVELY 36,194 AND 25,335; AND THE OVERALL REGISTRATION RATE REMAINS AT 52.4% (52.5% IN 1992).

THE MOVEMENT OF POPULATION FROM THE URBAN AREA TO THE NEW TERRITORIES CONTINUES, AND ACCOUNTS FOR A NET INCREASE OF 23,226 ELECTORS IN THE REGIONAL COUNCIL AREA AND A NET REDUCTION OF 12,367 ELECTORS IN THE URBAN COUNCIL AREA.

THE TOTAL REGISTERED ELECTORATE IN THE REGIONAL COUNCIL AREA STANDS AT 805,773 (48.7% OF TERRITORY TOTAL) AND THE URBAN COUNCIL AREA AT 1,138,907 (55.7% OF TERRITORY TOTAL).

THE FINAL REGISTER FOR FUNCTIONAL CONSTITUENCIES OF THE LEGISLATIVE COUNCIL HAS ALSO BEEN PUBLISHED WITH 70,400 ENTRIES. THERE IS A NET INCREASE OF 424 ELECTORS OVER LAST YEAR.

- - - - -

NOTE TO EDITORS:

THEY ARE ON: THE 1993 FINAL REGISTER OF GENERAL ELECTION ROLL, CHANGES IN THE SIZE OF THE GENERAL ELECTORAL ROLL; AND THE 1993 FINAL REGISTER OF THE LEGCO ELECTORAL ROLL FOR FUNCTIONAL CONSTITUENCIES.

- - - - -

/REGISTRATION STATISTICS

Registration Statistics by Districts
1993 FINAL REGISTER

(a)

District	Estimated Population #	Estimated Potential Electorate	No. of Electors in the 1993 Final Register	Registration Rate
A Islands	47,500	30,600	23,701	77.5%
B North	184,400	118,700	59,554	50.2%
C Sai Kung	161,200	103,800	47,244	45.5%
D Sha Tin	512,100	329,700	166,112	50.4%
E Tai Po	262,800	169,200	73,372	43.4%
F Tsuen Wan	262,900	169,200	85,262	50.4%
G Tuen Mun	425,900	274,200	127,312	46.4%
H Yuen Long	273,300	175,900	80,708	45.9%
J Kwai Tsing	440,400	283,500	142,508	50.3%
Regional Council Area Sub-total	2,570,500	1,654,800	805,773	48.7%
M Central & Western	257,500	165,800	77,794	46.9%
N Wan Chai	184,600	118,800	58,831	49.5%
P Eastern	544,800	350,700	202,821	57.8%
Q Southern	249,600	160,700	95,735	59.6%
R Kowloon City	374,300	240,900	125,722	52.2%
S Kwun Tong	539,100	347,000	210,602	60.7%
T Mong Kok	167,100	107,600	46,177	42.9%
U Sham Shui Po	360,800	232,300	124,920	53.8%
V Wong Tai Sin	376,600	242,400	160,914	66.4%
W Yau Tsim	124,100	79,900	35,391	44.3%
Urban Council Area Sub-total	3,178,500	2,046,100	1,138,907	55.7%
Marine Population	19,300	12,300	*	-
Grand Total	5,768,300	3,713,200	1,944,680	52.4%
1992 FINAL REGISTER	5,752,100	3,681,200	1,933,821	52.5%

based on the Population Forecasts by District Board Districts (1992-2001) by Planning Department, Hong Kong, December 1992.

* incorporated in the District figures above.

Registration and Electoral Office,
Constitutional Affairs Branch,
Government Secretariat.
July 1993

Ref: K3RSDP52

Date: 19-Jul-93

Changes in the Size of the General Electoral Roll

District	No. of Electors in the 1992 Final Register	No. of Deletions	No. of Additions	Gain/Loss in inter-district movement of electors	No. of Electors in the 1993 Final Register	Net Increase/ Decrease
A Islands	24,030	537	233	-25	23,701	-329 -1%
B North	57,050	774	1,482	1,796	59,554	2,504 4%
C Sai Kung	42,701	377	2,119	2,801	47,244	4,543 11%
D Sha Tin	161,803	1,080	3,157	2,232	166,112	4,309 3%
E Tai Po	68,293	579	2,033	3,625	73,372	5,079 7%
F Tsuen Wan	84,892	930	1,505	-205	85,262	370 0%
G Tuen Mun	125,958	998	2,599	-247	127,312	1,354 1%
H Yuen Long	76,674	1,260	2,615	2,679	80,708	4,034 5%
J Kwai Tsing	141,146	1,813	2,333	842	142,508	1,362 1%
Regional Council Area Sub-total	782,547	8,348	18,076	13,498	805,773	23,226 3%
M Central & Western	78,439	1,178	1,826	-1293	77,794	-645 -1%
N Wan Chai	60,648	1,190	986	-1613	58,831	-1817 -3%
P Eastern	203,717	2,569	3,425	-1752	202,821	-896 0%
Q Southern	94,166	1,215	1,552	1,232	95,735	1,569 2%
R Kowloon City	127,057	1,782	2,110	-1663	125,722	-1335 -1%
S Kwun Tong	215,386	2,914	3,201	-5071	210,602	-4784 -2%
T Mong Kok	48,779	840	803	-2565	46,177	-2602 -5%
U Sham Shui Po	125,998	2,140	1,889	-827	124,920	-1078 -1%
V Wong Tai Sin	159,847	2,268	1,733	1,602	160,914	1,067 1%
W Yau Tsim	37,237	891	593	-1548	35,391	-1846 -5%
Urban Council Area Sub-total	1,151,274	16,987	18,118	-13498	1,138,907	-12367 -1%
Total	1,933,821	25,335	36,194	0	1,944,680	10,859 1%

Registration and Electoral Office,
Constitutional Affairs Branch,
Government Secretariat.
July 1993
Ref : K3SGER52

	1992	1993
Potential Electorate	3,681,200	3,713,200
Registered Electorate	1,933,821	1,944,680
Registration Rate	52.5%	52.4%

LEGISLATIVE COUNCIL ELECTORAL ROLL
1993 FINAL REGISTER

JULY 1993

Constituency Code	Constituency	Electoral Division	1992 Final Register	1993 Deletions	1993 Additions	1993 Change of Constituency	1993 FINAL Register	Eligible Electorate	1993 Registration Rate
51	Commercial	First Commercial	1,440	103	120	+10	1,467	3,026	48.48%
52	Commercial	Second Commercial	2,315	27	5	-2	2,291	5,378	42.60%
		(corporate)	1504	14	5	-2	1493	3128	47.73%
		(individual)	811	13	0	0	798	2250	35.47%
53	Industrial	First Industrial	441	40	12	+2	415	729	56.93%
54	Industrial	Second Industrial	1,239	24	12	-2	1,225	2,141	57.22%
55	Finance & Financial Services	Finance	228	5	5	-1	227	366	62.02%
56	Labour	--	383	3	6	0	386	493	78.30%
57	Social Services	--	179	1	1	0	179	207	86.47%
58	Tourism	--	845	28	6	0	823	1,345	61.19%
59	Real Estate & Construction	--	376	9	1	-5	363	746	48.66%
		(corporate)	314	9	1	-5	301	544	55.33%
		(individual)	62	0	0	0	62	202	30.69%
60	Finance & Financial Services	Financial Services	668	48	27	-3	644	1,043	61.75%
		(corporate)	431	16	27	-2	440	733	60.03%
		(individual)	237	32	0	-1	204	310	65.81%
Sub-Total :			8,114	288	195	-1	8,020	15,474	51.83%
81	Medical & Health Care	Medical	4,099	5	76	0	4,170	7,397	56.37%
82	Teaching	--	38,805	103	96	-2	38,791	55,710	69.63%
83	Legal	--	1,291	4	28	0	1,315	3,088	42.58%
84	Engineering, Architectural, Surveying and Planning	Engineering	2,786	4	45	-2	2,825	3,794	74.46%
85	Medical & Health Care	Health Care	10,736	7	177	0	10,906	19,752	55.21%
86	Accountancy	--	2,405	24	264	+4	2,649	6,000	44.15%
87	Engineering, Architectural, Surveying and Planning	Architectural, Surveying, and Planning	1,553	27	15	+1	1,542	2,601	59.28%
88	Urban Council	--	40	0	0	0	40	40	100.00%
89	Regional Council	--	35	1	1	0	35	36	97.22%
90	Rural	--	112	5	0	0	107	139	76.98%
Sub-Total :			61,862	185	702	+1	62,380	98,557	63.20%
Functional Constituency Total			69,976	473	897	0	70,400	114,031	61.74%

Registration and Electoral Office

LABOUR DEPARTMENT GIVES ADVICE TO JOB-SEEKERS

* * * * *

STUDENTS INTENDING TO TAKE UP EMPLOYMENT OR TEMPORARY WORK ARE REMINDED TO SEEK ADVICE FROM THE LABOUR DEPARTMENT IF THEY HAVE DOUBTS ON JOB OFFERS.

A SPOKESMAN FOR THE DEPARTMENT GAVE THE ADVICE TODAY (THURSDAY) FOLLOWING RECENT ENQUIRIES FROM STUDENTS SEEKING ADVICE ON EMPLOYMENT AND SUMMER JOBS.

HE SAID NOT ONLY SHOULD THE STUDENTS UNDERSTAND THE JOB NATURE, DUTIES AND CONDITIONS OF EMPLOYMENT, THEY SHOULD ALSO TAKE INTO ACCOUNT FACTORS SUCH AS PERSONAL INTEREST AND ABILITY.

"STUDENTS SHOULD PAY EXTRA CARE BEFORE SIGNING ANY CONTRACT OR ACCEPTING ANY DEMANDS FROM THE EMPLOYER IN TERMS OF MONETARY GUARANTEE, OR PAYMENT OF CASH EITHER FOR TRAINING OR FOR BUYING GOODS INTENDED FOR SALE," HE SAID.

"THEY SHOULD AVOID ACCEPTING JOBS WITH IMMORAL IMPLICATION, DANGEROUS JOBS ON CONSTRUCTION SITES OR JOBS THAT REQUIRE THE HANDLING OF CHEMICALS AND HEAVY MECHANICAL EQUIPMENT.

"STUDENTS HAVING DOUBTS ON THE JOB OFFERED OR ENCOUNTERING ANY PROBLEM SHOULD CONSULT THEIR PARENTS, CAREER TEACHERS OR STAFF OF THE LABOUR DEPARTMENT'S LOCAL EMPLOYMENT SERVICE (LES)," HE ADDED.

ENQUIRIES CAN BE MADE EITHER IN PERSON OF THE 10 LES BRANCH OFFICES THROUGHOUT THE TERRITORY OR BY TELEPHONE ON 557 3924.

- - - - 0 - - - -

APPEALS TO SOCIAL SECURITY BOARD ON THE RISE

* * * * *

THE SOCIAL SECURITY APPEAL BOARD RECEIVED A TOTAL OF 161 APPEALS IN 1992/93, REPRESENTING AN INCREASE OF 29 CASES, OR 22 PER CENT, AS COMPARED WITH THE PRECEDING YEAR.

OF THE APPEALS, 11 WERE ON PUBLIC ASSISTANCE, 148 ON DISABILITY ALLOWANCE, AND TWO RELATED TO THE TRAFFIC ACCIDENT VICTIMS ASSISTANCE SCHEME.

ACCORDING TO THE LATEST ANNUAL REPORT OF THE BOARD, ALL APPEALS WERE HEARD BY MEMBERS OF THE BOARD WHO ARE ALL UNOFFICIALS APPOINTED BY THE GOVERNOR.

THEY ACT AS AN INDEPENDENT BODY TO PROVIDE A MEANS OF REDRESS FOR PERSONS NOT SATISFIED WITH THE DECISION OF THE SOCIAL WELFARE DEPARTMENT IN RESPECT OF ELIGIBILITY AND PAYMENT OF SOCIAL SECURITY BENEFITS.

/THE BOARD

THE BOARD HAD SO FAR HEARD 95 CASES FOR THE YEAR AND ANOTHER 52 CASES BROUGHT FORWARD FROM THE PRECEDING YEAR.

OF THESE 147 APPEALS HEARD DURING THE YEAR, THE BOARD SUBSTANTIATED THE DECISION OF THE DEPARTMENT IN 72 CASES AND OVERRULED ITS DECISION IN 75 CASES.

TO KEEP MEMBERS OF THE PUBLIC WELL AWARE OF THE WORK OF THE BOARD, POSTERS ABOUT THE APPEAL BOARD ARE DISPLAYED AT THE DEPARTMENT'S SOCIAL SECURITY FIELD UNITS AND THE TRAFFIC ACCIDENT VICTIMS ASSISTANCE SECTION.

EXPLANATORY LEAFLETS ARE ALSO AVAILABLE FOR COLLECTION AT THESE OFFICES.

IN ADDITION, WHENEVER A PERSON IS NOTIFIED IN WRITING BY THE DEPARTMENT OF THE RESULT OF HIS APPLICATION FOR SOCIAL SECURITY BENEFITS, HE IS ALSO INFORMED OF HIS RIGHT TO APPEAL TO THE BOARD IF HE IS DISSATISFIED WITH THE DEPARTMENT'S DECISION.

- - - - 0 - - - -

DOCTORS INVITED TO JOIN SCHOOL MEDICAL SCHEME

* * * * *

THE SCHOOL MEDICAL SERVICE BOARD HAS SENT OUT LETTERS TO ALL REGISTERED PRIVATE MEDICAL PRACTITIONERS CURRENTLY PRACTISING IN HONG KONG, INVITING THEM TO JOIN THE SCHEME FOR THE SCHOOL YEAR 1993/94.

ENCOURAGING DOCTORS TO TAKE PART IN THE COMMUNITY SERVICE, A SPOKESMAN FOR THE BOARD SAID: "DOCTORS PARTICIPATING IN THE CURRENT YEAR HAVE TO RENEW THEIR CONTRACT WITH THE BOARD IF THEY WISH TO CONTINUE DOING SO."

THE REMUNERATION IS \$156 PER PUPIL A YEAR.

IN ADDITION, A PER VISIT CHARGE OF \$18 MAY BE LEVIED ON EACH PUPIL, WITH MEDICINE SUPPLIED FREE FOR TWO DAYS IF MEDICATION IS REQUIRED.

THE SPOKESMAN SAID NO OTHER CHARGES MUST BE LEVIED ON STUDENTS.

THOSE WHO WISH TO PARTICIPATE AND HAVE NOT RECEIVED THE INVITATION LETTER MAY CONTACT THE BOARD'S SECRETARIAT ON TEL 894 9603, 576 4765 OR 576 3545.

CLOSING DATE FOR JOINING THE SCHEME IS AUGUST 2.

- - - - 0 - - - -

25 PASS MEDICAL LICENTIATE EXAM
* * * * *

THE LICENTIATE COMMITTEE OF THE MEDICAL COUNCIL OF HONG KONG ANNOUNCED TODAY (THURSDAY) THAT 25 CANDIDATES HAD PASSED THE FINAL PART OF THE LICENTIATE EXAMINATION FOR UNREGISTRABLE DOCTORS HELD EARLIER THIS MONTH.

FORTY-SEVEN CANDIDATES HAD FAILED THE EXAMINATION.

THIS PART OF THE EXAMINATION WAS AN ORAL TEST TO TRY OUT THE CANDIDATES' ABILITY TO APPLY PROFESSIONAL KNOWLEDGE TO CLINICAL PROBLEMS.

CANDIDATES WERE EXAMINED BY TWO PANELS OF EXAMINERS IN EACH OF THE THREE DISCIPLINES: MEDICINE, SURGERY AND OBSTETRICS AND GYNAECOLOGY.

THE SUCCESSFUL CANDIDATES WILL BE REQUIRED TO UNDERGO 18 MONTHS OF ASSESSMENT AND TRAINING IN HOSPITALS APPROVED BY THE MEDICAL COUNCIL STARTING IN SEPTEMBER THIS YEAR.

- - - - 0 - - - -

262 YOUNG HEALTH LEADERS TRAINED
* * * * *

TWO HUNDRED AND SIXTY-TWO FORM 3 STUDENTS HAVE SUCCESSFULLY COMPLETED THIS YEAR'S YOUNG HEALTH LEADERS TRAINING PROJECT JOINTLY ORGANISED BY THE DEPARTMENT OF HEALTH AND THE EDUCATION DEPARTMENT.

THIS BRINGS TO 2,352 THE TOTAL NUMBER OF STUDENTS TRAINED UNDER THE PROJECT SINCE IT STARTED 10 YEARS AGO.

THE PURPOSE OF THE PROJECT IS TO TRAIN SELECTED STUDENTS ON HEALTH EDUCATION, COMMUNICATION SKILL AND LEADERSHIP SO THAT THEY CAN HELP SEND PROPER HEALTH MESSAGES AMONG THEIR SCHOOLMATES, FRIENDS, FAMILY MEMBERS AND NEIGHBOURS, AND DRIVE THEM TO TURN TO HEALTHY LIFE STYLE.

"THIS YEAR, WE HAVE SPECIALLY INVITED MORE PROFESSIONALS SUCH AS CLINICAL PSYCHOLOGISTS TO GIVE TALKS TO THE TRAINEES," A SPOKESMAN FOR THE DEPARTMENT OF HEALTH SAID TODAY (THURSDAY).

AFTER THE TRAINING, THE YOUNG HEALTH LEADERS WILL BE REQUIRED TO CARRY OUT HEALTH EDUCATION PROJECTS IN THEIR SCHOOLS AND WILL BE GIVEN HELP AND GUIDANCE BY THE CENTRAL HEALTH EDUCATION UNIT OF THE DEPARTMENT, HE ADDED.

AN INTAKE OF 273 STUDENTS WERE SELECTED THIS YEAR TO TAKE ABOUT TWO WEEKS OF FULL-DAY TRAINING UNDER THE PROJECT.

- - - - 0 - - - -

MUSIC ADMINISTRATOR MEETS STAFF AND PARENTS

* * * * *

THE MUSIC ADMINISTRATOR OF THE MUSIC OFFICE, MR BRIAN LAU, TODAY (THURSDAY) MET REPRESENTATIVES OF THE GOVERNMENT MUSIC OFFICER GRADE STAFF ASSOCIATION AND THE MUSIC OFFICE PARENTS' ASSOCIATION.

HE EXPLAINED TO THEM THE ADMINISTRATION'S PRELIMINARY VIEWS ON THE FUTURE OF THE MUSIC OFFICE.

SUBJECT TO EXECUTIVE COUNCIL'S APPROVAL, ITS WORK WOULD BE TRANSFERRED TO A NON-GOVERNMENT ORGANISATION, HE SAID.

INTERESTED ORGANISATIONS WOULD BE INVITED TO SUBMIT DETAILED PROPOSALS TO THE GOVERNMENT FOR CONSIDERATION.

DETAILED ARRANGEMENTS WOULD THEN BE WORKED OUT WITH THE CHOSEN ORGANISATION.

THE WHOLE PROCESS OF TRANSFER WAS ENVISAGED TO TAKE UP TO TWO OR THREE YEARS.

MR LAU NOTED THE GOVERNMENT MUSIC OFFICER GRADE STAFF ASSOCIATION'S VIEW THAT THE WORK OF THE MUSIC OFFICE SHOULD BE TRANSFERRED IN ITS ENTIRETY AND THE STAFF CONCERNED SHOULD BE ABLE TO MAINTAIN THEIR STATUS AS CIVIL SERVANTS.

HE ASSURED THEM THAT THEIR VIEWS WOULD BE TAKEN INTO ACCOUNT WHEN THE ADMINISTRATION CONSIDERED WHICH NON-GOVERNMENT ORGANISATION SHOULD TAKE OVER THE MUSIC OFFICE'S WORK.

THE STAFF ASSOCIATION HAD BEEN SPECIFICALLY INVITED TO FORWARD THEIR VIEWS AND PROPOSALS ON STAFFING ARRANGEMENTS.

MR LAU REASSURED THEM THAT ALL STAFF WOULD BE CONSULTED ONCE CONCRETE PROPOSALS CONCERNING THE STAFFING ARRANGEMENTS HAD BEEN DRAWN UP.

HE ALSO REAFFIRMED TO THE PARENTS THAT THE STANDARD AND LEVEL OF ACTIVITIES OF THE MUSIC OFFICE AND ITS REGIONAL MUSIC CENTRES WOULD BE MAINTAINED AFTER THE TRANSFER.

THE CHOSEN NON-GOVERNMENT ORGANISATION WOULD BE REQUIRED TO DEMONSTRATE THAT THEY COULD ALLAY THE PARENTS' WORRIES AND INSTIL CONFIDENCE IN THEM.

SUBJECT TO THE AGREEMENT OF THE ORGANISATION, TRIPARTITE MEETINGS BETWEEN THE PARENTS, THE ORGANISATION AND THE RECREATION AND CULTURE BRANCH/MUSIC OFFICE WOULD BE ARRANGED AT A LATER STAGE SO THAT THE PARENTS CAN DIRECTLY PASS ON THEIR VIEWS.

MR LAU EMPHASISED THAT THE ADMINISTRATION'S VIEWS WERE STILL QUITE PRELIMINARY AT THIS STAGE PENDING APPROVAL OF THE EXECUTIVE COUNCIL.

HE WOULD REGULARLY MEET THE STAFF ASSOCIATION AND PARENTS' ASSOCIATION TO KEEP THEM INFORMED AND EXCHANGE VIEWS.

FINANCE COMMITTEE MEETING

* * * * *

THE FINANCE COMMITTEE WILL HOLD A MEETING AT 2.30 PM TOMORROW (FRIDAY) AT THE LEGISLATIVE COUNCIL CHAMBER.

MEMBERS OF THE PUBLIC ARE WELCOME TO OBSERVE THE PROCEEDINGS FROM THE PUBLIC GALLERY. THEY MAY RESERVE SEATS BY CALLING 869 9492.

- - - - -

ATTENTION NEWS EDITORS:

YOUR REPRESENTATIVES ARE INVITED TO COVER THE MEETING.

ADVANCE COPIES OF THE PAPERS FOR THE MEETING WILL BE AVAILABLE FROM 2.30 PM TODAY (THURSDAY) IN THE PRESS ROOM OF THE LEGISLATIVE COUNCIL BUILDING, JACKSON ROAD, CENTRAL. PLEASE NOTE THAT THE CONTENT OF THE PAPERS ARE NOT FOR USE UNTIL THE MEETING IS OVER.

- - - - 0 - - - -

HONG KONG GOVERNMENT EXCHANGE FUND
MONEY MARKET OPERATIONS

* * * * *

	\$ MILLION

OPENING BALANCE IN THE ACCOUNT	1,980
REVERSAL OF LAF	+20
BALANCE AFTER REVERSAL OF LAF	2,000
NET INJECTION/WITHDRAWAL TODAY	NIL
EFFECT OF LAF TODAY	-490
CLOSING BALANCE IN THE ACCOUNT	1,510
LAF RATE 2.00 BID/4.00 OFFER	TWI 112.6 *+0.0* 22.7.93

HONG KONG GOVERNMENT EXCHANGE FUND

EF BILLS		EF NOTES/HONG KONG GOVERNMENT BONDS				
TERMS	YIELD	TERM	ISSUE	COUPON	PRICE	YIELD
1 WEEK	2.25 PCT	13 MONTHS	2408	4.375	100.58	3.85
1 MONTH	2.72 PCT	16 MONTHS	2411	4.625	100.75	4.07
3 MONTHS	3.15 PCT	19 MONTHS	2502	4.75	100.74	4.30
6 MONTHS	3.43 PCT	22 MONTHS	2505	3.75	98.72	4.54
12 MONTHS	3.79 PCT					

TOTAL TURNOVER OF BILLS AND BONDS - 24,455MN

CLOSED 22 JULY 1993

- - - - 0 - - - -