

	<u>TABLE-NO.</u>
VI. <u>Clinic-Services</u>	
Total Out-patient Attendances at Government and Government-assisted Institutions 1988	58
Total Attendances at Specialist Clinics in Government and Government-assisted Institutions 1988	59
Psychiatric Day-patients and Out-patients 1988	60
Work of Ophthalmic Service 1987 and 1988	61
Causes for Permanent Blindness Registration 1987 and 1988	62
Work of Ear-Nose-Throat Service 1987 and 1988	63
Work of General Dental Service 1984 to 1988	64
Work of Child Assessment Service 1987 and 1988	65
District Midwifery Service 1987 and 1988	66
School Medical Service 1988/89	67
Medical Clinics Registration as at 31 March 1989	68
VII. <u>Special-Services</u>	
Work of the Institute of Pathology 1987 and 1988 (excluding Prince of Wales Hospital)	69
Work of the Institute of Pathology at Prince of Wales Hospital 1987 and 1988	69(a)
Work of Blood Banks 1988	70
Work of Public Mortuaries 1987 and 1988	71
Work of Diagnostic Radiology Division 1988	72
Work of Radiotherapy Division 1987 and 1988	73
Work of Forensic Pathology Laboratories 1987 and 1988	74
VIII. <u>Other-Services</u>	
Work of Community Nursing Service 1988	75
Work of Pharmaceutical Service 1987/88 and 1988/89	76
Work of Physiotherapy Service 1988	77
Work of Occupational Therapy Service 1988	78
Work of Prosthetic-Orthotic Service 1988	79
Work of Medical Examination Board 1987 and 1988	80

	<u>TABLE-NO.</u>
IX. <u>Training-Programme</u>	
Training of Nursing Staff in 1988	81
Overseas Courses of Instruction 1988/89	82
Departmental Training 1988/89	83
X. <u>Medical-Development</u>	
Building Programme 1988/89	84
XI. <u>Miscellaneous</u>	
Attendance at Overseas Conferences etc. 1988/89	85
Overseas Visitors 1988/89	86
Publications 1988/89	87
Samaritan Fund 1988/89	88
List of Donations Received for the Year Ended 31 March 1989	89

TABLE 1 ESTABLISHMENT OF MEDICAL & HEALTH DEPARTMENT AS AT 31 MARCH 1989

Grade	Zone	Hospitals							Total	Strength on 31.3.1989		
		Headquarters & Health/Miscellaneous Services	Kowloon Hospital	Prince of Wales Hospital	Princess Margaret Hospital	Queen Elizabeth Hospital	Queen Mary Hospital	Tuen Mun Hospital			Medical Services	Mental Health Service
Director of Medical & Health Services		1									1	1
#Deputy Director of Medical & Health Services		2									2	3
Senior Assistant Director of Medical & Health Services		4									4	3
Assistant Director of Medical & Health Services		4									4	4
#Consultant (Incl Dental)		13	1	1	16	25	10			15	90	88
Principal Medical & Health Officer		14	1	1	1	1	1			2	21	14
#Senior Medical & Health Officer/Medical & Health Officer		234	15	162	205	332	161	60		369	1 622	1 520
Nursing Director		1									1	1
#Nursing Staff (Incl Psychiatric Nursing Staff)		1 014	477	1 710	1 323	1 761	2 017	929	1058	1 303	11 592	11 229
Senior Inoculator/Inoculator		107									107	81
Midwife		152			17		12		154		335	234
#*Principal Dental Officer/Senior Dental Officer/Dental Officer		139	3	2	3	3	2			4	156	156
Dental Hygienist/Student Dental Hygienist		8									8	5
Dental Inspector		2									2	2
Senior Dental Surgery Assistant/Dental Surgery Assistant		153	3	3	4	4	3			4	174	155

TABLE 1 (Cont'd)

Grade	Zone	Hospitals							Total	Strength on 31.3.1989		
		Headquarters & Health/Miscellaneous Service	Kowloon Hospital	Prince of Wales Hospital	Princess Margaret Hospital	Queen Elizabeth Hospital	Queen Mary Hospital	Tuen Mun Hospital			Medical Services	Mental Health Service
Senior Dental Technologist/Dental Technologist		3									3	3
Dental Technician I/Dental Technician II		53					1				57	55
Tutor Dental Therapist/Senior Dental Therapist/Dental Therapist/Student Dental Therapist		269									269	261
#*Chief Medical Technologist/Senior Medical Technologist/Medical Technologist/Medical Laboratory Technician I/Medical Laboratory Technician II/Student Medical Laboratory Technician				95	84	100	12	4	236	7	538	540
#Superintendent Occupational Therapist/Senior Occupational Therapist/Occupational Therapist I/Occupational Therapist II/Occupational Therapy Assistant			18	32	19	21	9		50	151	300	300
#*Chief Pharmacist/Senior Pharmacist/Pharmacist/Chief Dispenser/Senior Dispenser/Dispenser/Student Dispenser		41	7	41	33	43	36		454	12	667	645
Superintendent Physiotherapist/Senior Physiotherapist/Physiotherapist I/Physiotherapist II			20	38	21	38	24		99	6	246	230
*Senior Physicist/Physicist		4		7		7	3	7			28	25
#*Superintendent Radiographer/Senior Radiographer/Radiographer I/Radiographer II/Student Radiographer		1	9	80	33	100	60	29	53	3	368	360

TABLE 1 (Cont'd)

Zone	Headquarters & Health/Miscellaneous Services	Kowloon Hospital	Prince of Wales Hospital	Princess Margaret Hospital	Queen Elizabeth Hospital	Queen Mary Hospital	Tuen Mun Hospital	Medical Services	Mental Health Services	Total	Strength on 31.3.1989
Mould Laboratory Technologist/Senior Mould Laboratory Technician/Mould Laboratory Technician/Student Mould Laboratory Technician			7		9	5	8			29	29
Senior X-ray Assistant/X-ray Assistant			7	1	4	4	1	34		34	33
X-ray Mechanic			7					1		18	17
Audiology Technician I/Audiology Technician II				2				7		7	6
Chiropodist I/Chiropodist II			2					2		6	6
Senior Clinical Psychologist/Clinical Psychologist			1					4	12	17	15
Senior Dietitian/Dietitian	4	2	5	4	5	4		1	4	29	23
Senior Electrical Technician/Electrical Technician	1		13	2	8	5	2	3		34	29
#Senior Foreman/Foreman	10	1	1	4	14	7	3	2	3	31	32
*Principal Hospital Administrator/Chief Hospital Administrator/Senior Hospital Administrator/Hospital Administrator I/Hospital Administrator II	52	2	4	4	8	7		5	8	93	85
#*Chief Hospital Foreman/Senior Hospital Foreman/Hospital Foreman	10	5	8	5	5	8	1	12	14	68	65

TABLE 1 (Cont'd)

Zone	Headquarters & Health/Miscellaneous Services	Kowloon Hospital	Prince of Wales Hospital	Princess Margaret Hospital	Queen Elizabeth Hospital	Queen Mary Hospital	Tuen Mun Hospital	Medical Services	Mental Health Service	Total	Strength on 31.3.1989
Laundry Manager/Assistant Laundry Manager	3				3					6	6
Linen Production Unit Manager/Linen Production Unit Supervisor	5				1					6	6
Machinist	58									58	44
Mortuary Supervisor			1	1	2	1		4		9	8
Mortuary Technician			1	1	1	1		4		8	8
Orthoptist I/Orthoptist II								8		8	7
Senior Optical Technician/Optical Technician								8		8	6
Photographer I/Photographer II	1		2	1	2	1		3		10	9
Senior Prosthetist/Prosthetist I/Prosthetist II/Student Prosthetist		3	12		6	6	10	30		67	62
#Scientific Officer (Medical)	1		10	2	5		2	13		33	29
Speech Therapist			1					8		9	9
Tailor	2									2	1
Chief Training Officer/Senior Training Officer/Training Officer I	2									2	1
Assistant Transport Supervisor		1				1				2	2
Computer Operator II/Student Computer Operator								2		2	2

TABLE 1 (Cont'd)

Zone		Headquarters & Health/Miscellaneous Services	Kowloon Hospital	Prince of Wales Hospital	Princess Margaret Hospital	Queen Elizabeth Hospital	Queen Mary Hospital	Tuen Mun Hospital	Medical Services	Mental Health Service	Total	Strength on 31.3.1989
Grade		4+2@	43	172	126	218	121	4	403	111	2 042	2 026
Administrative Officer Staff Grade 'B'/ Administrative Officer Staff Grade 'C'/ Senior Administrative Officer/Administrative Officer Chauffeur		1				1					4+2@	5
#*Principal Executive Officer/Chief Executive Officer/ Senior Executive Officer/Executive Officer I/ Executive Officer II		42+2@									43+2@	52
Senior Chinese Language Officer/Chinese Language Officer I/Chinese Language Officer II		4									4	4
#*General Grade Staff		844									2 042	2 026
Senior Health Inspector/Health Inspector I/ Health Inspector II		11									11	11
Chief Librarian/Librarian/Assistant Librarian I		3			1	1					5	5
Senior Statistician/Statistician/Statistical Officer I/ Statistical Officer II/Student Statistical Officer		24		1	1	2	1				29	29
Chief Supplies Officer/Senior Supplies Officer/ Supplies Officer/Assistant Supplies Officer/ Supplies Supervisor I/Supplies Supervisor II/ Supplies Assistant		45	6	14	12	13	10	2	31	14	147	142

TABLE 1 (Cont'd)

Zone		Headquarters & Health/Miscellaneous Services	Kowloon Hospital	Prince of Wales Hospital	Princess Margaret Hospital	Queen Elizabeth Hospital	Queen Mary Hospital	Tuen Mun Hospital	Medical Services	Mental Health Service	Total	Strength on 31.3.1989
Grade		2	5	7	7	8	7		21	11	68	58
Telephone Operator												
*Chief Treasury Accountant/Senior Treasury Accountant/ Treasury Accountant/Accounting Officer I/ Accounting Officer II		24									24	29
#*Minor Staff		939	465	1107	862	1282	859	4	1476	1258	8252	7970
Total		4311+4@	1087	3549	2792	4034	3392	1066	4572	3018	27821+4@	26787

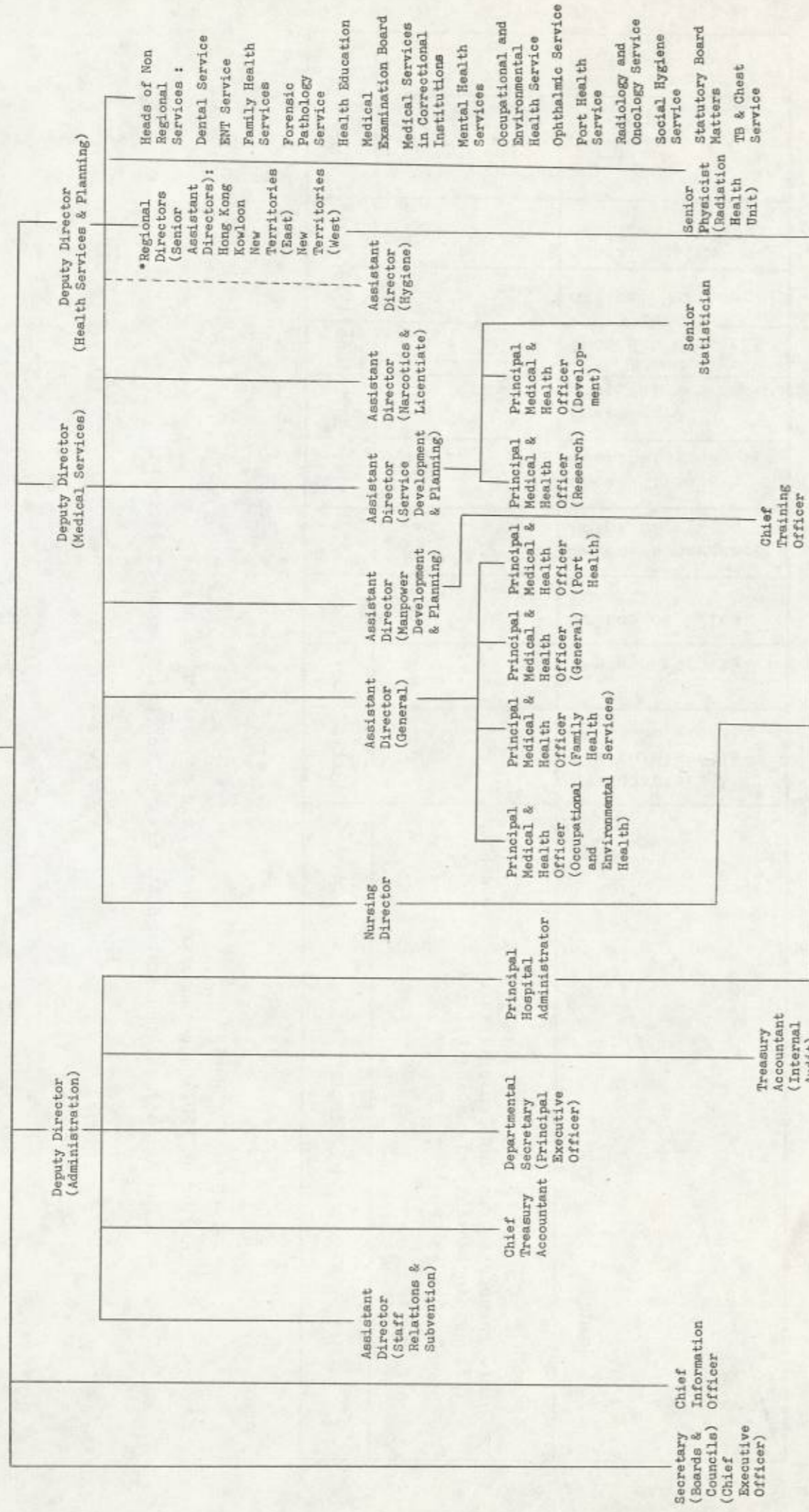
@ Supernumerary posts.

* Excluding (707) supernumerary posts held against other posts.

Excluding (64) supernumerary posts created for short leave replacement.

TABLE 2 ORGANISATION OF MEDICAL & HEALTH DEPARTMENT - AS AT 31 March 1989

Director of Medical & Health Services



HONG KONG, KOWLOON AND NEW TERRITORIES REGIONS

* Organisation of a Region is shown at Table 2(a).

TABLE 2(a) ORGANISATION OF A REGION

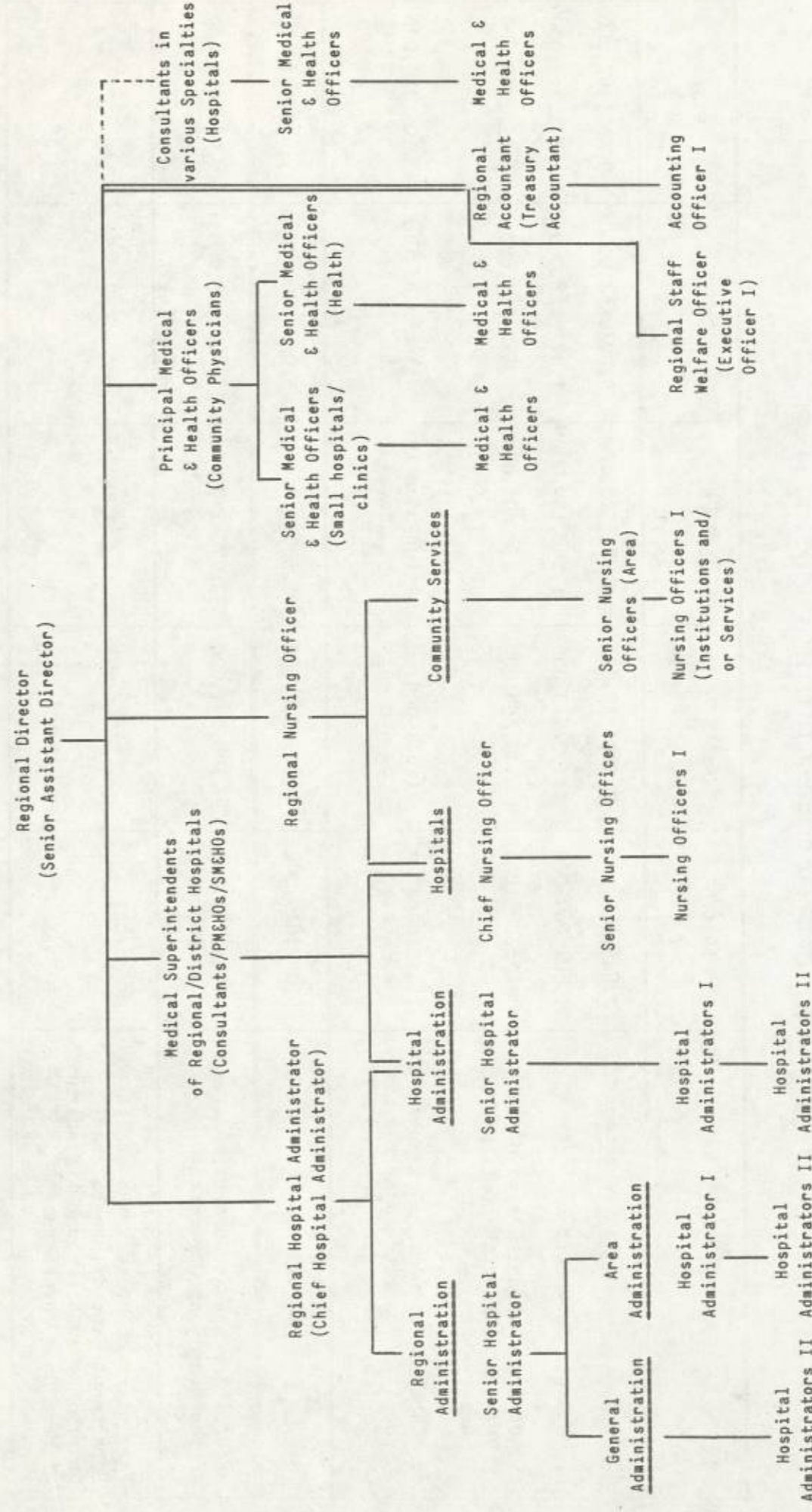


TABLE 3 STATEMENT OF EXPENDITURE FROM 1984/85 TO 1988/89

Particular	1984/85 \$	1985/86 \$	1986/87 \$	1987/88 \$	1988/89 \$
a. Medical and Health Department	2,085,483,000	2,387,752,000	2,774,528,000	3,094,564,000	3,507,197,000
b. Medical Subventions	1,004,069,000	1,132,118,000	1,268,149,000	1,425,248,000	1,521,712,000
c. Capital Expenditure on Medical Projects under the Capital Works Reserve Fund	178,267,000	249,558,000	458,205,000	532,714,000	552,052,000
d. Capital Expenditure on Subvented Medical Projects under the Capital Works Reserve Fund	(included in b. above)	(included in b. above)	(included in b. above)	(included in b. above)	103,223,000
TOTAL	3,267,819,000	3,769,428,000	4,500,882,000	5,052,526,000	5,684,184,000
General Revenue Account Expenditure of the Hong Kong Government	36,901,751,000	39,798,204,000	39,927,727,000	44,021,965,000	48,952,628,000
Percentage of Medical and Health Department Expenditure to the General Revenue Account Expenditure of Hong Kong Government	8.86%	9.47%	11.27%	11.48%	11.61%

TABLE 4 LEGISLATION OF MEDICAL AND HEALTH IMPORTANCE

APRIL 1988 TO MARCH 1989

ORDINANCE

Hong Kong Tuberculosis, Chest and Heart Diseases Association Incorporation (Amendment) Ordinance 1988, No. 43

Mental Health (Amendment) Ordinance 1988, No. 46

Occupational Safety and Health Council Ordinance 1988, No. 73

Pharmacy and Poisons (Amendment) Ordinance 1989, No. 60

Pneumoconiosis Compensation (Amendment) Ordinance 1988, No. 35

Queen Elizabeth Foundation for the Mentally Handicapped Ordinance 1988, No. 74

Undesirable Medical Advertisements (Amendment) Ordinance 1988, No. 65

RULES AND REGULATIONS

Mental Health Ordinance, Chapter 136 :

Mental Health Review Tribunal Rules 1988

Mental Health Review Tribunal (Amendment) Rules 1989

Occupational Safety and Health Council Ordinance 1988, No. 73 of 1988 :

Occupational Safety and Health Council Levy (Rate of Levy) Order 1988

Occupational Safety and Health Council Ordinance 1988 (Commencement) Notice 1988

Pneumoconiosis (Compensation) Ordinance, Chapter 360 :

Pneumoconiosis (Compensation) (Computer of Earnings) (Amendment) Regulation 1988

Resolution amending the rate of levy

Quarantine and Prevention of Disease (Scale of Charges) (Amendment) Regulation 1988

Supplementary Medical Professions, Midwives Registration and Nurses Registration (Amendment) Ordinance 1985, No. 67 of 1985 :

Supplementary Medical Professions, Midwives Registration and Nurses Registration (Amendment) Ordinance 1985

(Commencement of Section 3 and 15) Notice 1988

(Commencement of Part II of the Schedule to Section 16) Notice 1988

Supplementary Medical Professions Ordinance, Chapter 359 :

Supplementary Medical Professions Ordinance (Application of Part II) Order 1988

Undesirable Medical Advertisements (Amendment) Ordinance 1988, No. 65 of 1988 :

Undesirable Medical Advertisements (Amendment) Ordinance 1988 (Commencement) Notice 1988

TABLE 5 WORK OF STATUTORY COUNCILS - APRIL 1988 TO MARCH 1989

WORK	COUNCIL	MEDICAL		DENTAL			
		Local List	Overseas List	Dentists		Dental Hygienists	
				Local List	Overseas List		
Number on the register on 31.3.1989		5 351	510	1 323	90	80	
Number of registrations	Registration (Full) Provisional Registration (Intern) Provisional Registration (Extern)	364 212 *30	23	125	14	-	
Number of examinations held	Multiple-Choice Question Paper Oral Written	*1 *1 *2	- - -	1 2 (Practical) 1 (Clinical)	- - -	- - -	
Number of candidates examined	Multiple-Choice Question Paper Oral Written	*138 *83 *29	- - -	58 55 (Practical) 11 (Clinical)	- - -	- - -	
Number of successful candidates	Multiple-Choice Question Paper Oral Written	*19 *30 *25	- - -	11 8 (Practical) 3 (Clinical)	- - -	- - -	
Disciplinary hearings held	No. of hearings No. of persons charged	6 6	- -	5 4	- -	- -	
Number of removals from register		119	56	56	29	-	

Number of Meetings held : Medical Council & its Related Committees/Working Parties - 15
Dental Council & its Related Committees/Working Parties - 13
Licentiate Committee & its Sub-Committees - 13

* Licentiate Scheme for unregistrable doctors

TABLE 6 WORK OF STATUTORY BOARDS - APRIL 1988 TO MARCH 1989

WORK	BOARD	Nursing							Midwives	Pharmacy & Poisons
		Registered			Enrolled					
		General	Mental	Mentally Sub-normal	Sick Children	General	Mental			
Number on the Register on 31.3.1989		17 284	1 134	10	2	6 212	502	9 495	667	
Number of applications for registration		928	65	-	-	344	19	324	93	
Number of registrations granted		898	65	-	-	344	19	313	46	
Number of examinations held		3	3	-	-	3	3	4	2	
Number of candidates examined		883	59	-	-	354	15	295	90	
Number of successful candidates		845	52	-	-	325	15	293	28	
Disciplinary hearings held		-	-	-	-	-	-	-	-	
No. of hearings		-	-	-	-	-	-	-	-	
No. of persons charged		-	-	-	-	-	-	-	-	
Appeal hearings held		-	-	-	-	-	-	-	4	
No. of appeals		-	-	-	-	-	-	-	4	
Number of removals from register		1	-	-	-	-	-	-	18	
Number of restoration to register		-	-	-	-	-	-	-	5	

Number of Meetings held : Nursing Board & its Related Committee - 90
Midwives Board & its Related Committee - 4
Pharmacy and Poisons Board - 0
Poisons Committee - 3

TABLE 6(a) SUPPLEMENTARY MEDICAL PROFESSIONS COUNCIL
APRIL 1988 TO MARCH 1989

Number of meetings held :-

Supplementary Medical Professions Council	2
Medical Laboratory Technologists Board	-
Physiotherapists Board	3
Radiographers Board	1
Occupational Therapists Board	1
Optometrists Board	2

TABLE 6(b) DETAILS OF LICENCES ISSUED BY THE RADIATION BOARD
APRIL 1988 TO MARCH 1989

	Irradiating Apparatus		Radioactive Substances
	Possess & Operate	Possess	
Total number of licences remained in force as at 31.3.1989	1 177	82	713
Number of applications for licences	213	-	113
Number of new licences granted	185	157	106
Number of licences cancelled	94	174	115

TABLE 7 ESTIMATED POPULATION BY AGE GROUP AT MID-1988

Age Group	Male	Female	Total
0	37 400	34 900	72 300
1 - 4	166 900	154 000	320 900
5 - 9	223 900	208 200	432 100
10 - 14	225 300	206 600	431 900
15 - 19	229 100	208 300	437 400
20 - 24	270 700	262 400	533 100
25 - 29	320 100	308 300	628 400
30 - 34	293 500	276 300	569 800
35 - 39	244 400	220 600	465 000
40 - 44	171 300	145 100	316 400
45 - 49	132 500	109 500	242 000
50 - 54	146 000	125 100	271 100
55 - 59	138 700	124 500	263 200
60 - 64	115 500	112 900	228 400
65 - 69	87 100	92 500	179 600
70 - 74	60 200	72 400	132 600
75 - 79	33 600	49 700	83 300
80 & over	20 300	53 500	73 800
Total	2 916 500	2 764 800	5 681 300

TABLE 8. VITAL STATISTICS -- HONG KONG (Absolute Number) 1956 to 1988

Year	Population (1)	Registered# Live Births (2)	Registered# Deaths (3)	Late Foetal Deaths (Still Births) (4)	Early Neo Deaths (5)	Late Neo Deaths (6)	Post Neo Deaths (7)	Peri- Natal Deaths (8)=(4)+(5)	Neo- Natal Deaths (9)= (5)+(6)	Infant# Deaths (10)=(5)+ (6)+(7)	Maternal Deaths (11)
1956	2 614 600	96 746	19 295	988	1 303	1 039	3 553	2 291	2 342	5 895	88
1957	2 736 300	97 834	19 365	1 245	1 323	1 007	3 106	2 568	2 330	5 436	105
1958	2 854 100	106 624	20 554	1 297	1 413	1 079	3 294	2 710	2 492	5 786	92
1959	2 967 400	104 579	20 250	1 393	1 335	888	2 831	2 728	2 223	5 054	77
1960	3 075 300	110 667	19 146	1 680	1 309	1 003	2 279	2 989	2 312	4 591	55
1961	3 165 100	108 726(110 884)	18 735(19 325)	1 683	1 226	1 054	1 818	2 909	2 280	4 098(4 106)	50
1962	3 305 200	111 905(112 503)	20 324(20 933)	1 560	1 260	1 109	1 761	2 820	2 369	4 130(4 139)	54
1963	3 420 900	115 263(114 550)	19 748(20 340)	1 633	1 206	972	1 623	2 839	2 178	3 801(3 810)	34
1964	3 504 600	108 519(107 625)	18 113(18 657)	1 485	1 115	684	1 071	2 600	1 799	2 870(2 881)	42
1965	3 597 900	102 195(101 110)	17 621(18 150)	1 363	1 017	537	871	2 380	1 554	2 425(2 435)	34
1966	3 629 900	92 476 (91 832)	18 700(19 261)	1 246	1 011	407	882	2 257	1 418	2 300(2 308)	40
1967	3 722 800	88 171 (88 215)	19 644(20 234)	999	958	440	862	1 957	1 398	2 260(2 268)	27
1968	3 802 700	82 992 (82 685)	19 319(19 444)	832	843	404	664	1 675	1 247	1 911(1 919)	12
1969	3 863 900	79 329 (82 482)	18 730(19 256)	757	810	373	548	1 567	1 183	1 731(1 740)	12
1970	3 959 000	77 465 (79 132)	20 763(19 996)	726	734	252	535	1 460	986	1 521(1 527)	15
1971	4 045 300	76 818 (79 789)	20 253(20 374)	656	716	254	440	1 372	970	1 410(1 415)	11
1972	4 123 600	79 053 (80 344)	21 145(21 397)	736	740	174	466	1 476	914	1 380(1 396)	16
1973	4 241 600	80 147 (82 252)	21 360(21 251)	681	724	157	464	1 405	881	1 345(1 351)	8
1974	4 377 800	81 879 (83 581)	22 050(21 879)	621	717	184	520	1 338	901	1 421(1 407)	13
1975	4 461 600	78 200 (79 790)	21 191(21 597)	565	671	133	369	1 236	804	1 173(1 192)	2
1976	4 518 000	76 342 (78 511)	23 195(22 633)	521	564	127	401	1 085	691	1 092(1 077)	14
1977	4 583 700	78 807 (80 022)	23 459(23 346)	528	565	140	388	1 093	705	1 093(1 081)	13
1978	4 667 500	79 173 (80 957)	22 843(23 830)	431	539	115	280	970	654	934 (956)	5
1979	4 929 700	82 157 (81 975)	26 179(25 125)	389	570	124	398	959	694	1 092(1 011)	7
1980	5 063 100	85 406 (85 290)	25 987(25 008)	483	532	135	341	1 015	667	1 008 (956)	4
1981	5 183 400	87 104 (86 751)	24 978(24 832)	475	471	104	271	946	575	846 (839)	7
1982	5 264 500	86 036 (86 120)	25 460(25 396)	438	482	116	255	920	598	853 (854)	1
1983	5 345 100	82 015 (83 293)	26 485(26 522)	386	465	109	256	851	574	830 (822)	6
1984	5 397 900	77 635 (77 297)	25 580(25 520)	330	393	109	207	723	502	709 (683)	5
1985	5 456 200	76 433 (76 126)	25 325(25 258)	295	296	83	201	591	379	580 (572)	4
1986	5 532 600	72 211 (71 620)	26 030(25 912)	292	303	80	170	595	383	553 (554)	2
1987	5 613 400	70 152 (69 958)	26 959(26 916)	291	257	81	187	548	338	525 (515)	3
1988	5 681 300	73 030 (75 412)	27 376(27 659)	310	260	90	206	570	350	556 (559)	3

Figures in brackets denote adjusted births and deaths for 1961-1968 and known births and deaths for 1969 onwards. Vietnamese boat people are excluded from all known birth and death figures.

TABLE 9. VITAL STATISTICS -- HONG KONG (Rate) 1956 to 1988

Year	Crude# Birth Rate (1)	Crude# Death Rate (2)	Late Foetal Mort (3)	Early Neo Mort (4)	Late Neo Mort (5)	Peri- Natal Mort (7)	Neo- Natal Mort (8)=(4)+(5)	Infant# Mort (9)=(4)+(5)+(6)	Maternal Mort (10)
1956	37.0	7.4	10.1	13.5	10.7	23.4	24.2	60.9	0.90
1957	35.8	7.1	12.6	13.5	10.3	25.9	23.8	55.6	1.06
1958	37.4	7.2	12.0	13.3	10.1	25.1	23.4	54.3	0.85
1959	35.2	6.8	13.1	12.8	8.5	25.7	21.3	48.3	0.73
1960	36.0	6.2	15.0	11.8	9.1	26.6	20.9	41.5	0.49
1961	34.3 (35.0)	5.9 (6.1)	15.2	11.3	9.7	26.3	21.0	37.7 (37.0)	0.45
1962	33.6 (34.0)	6.1 (6.3)	13.7	11.3	9.9	24.9	21.2	36.9 (36.8)	0.45
1963	33.7 (33.5)	5.8 (5.9)	14.0	10.5	8.4	24.3	18.9	33.0 (33.3)	0.29
1964	31.0 (30.7)	5.2 (5.3)	13.5	10.3	6.3	23.6	16.6	26.4 (26.5)	0.38
1965	28.4 (28.1)	4.9 (5.0)	13.2	10.0	5.3	23.0	15.2	23.7 (24.1)	0.33
1966	25.5 (25.3)	5.2 (5.3)	13.3	10.9	4.4	24.1	15.3	24.9 (25.1)	0.43
1967	23.6 (23.7)	5.3 (5.4)	11.2	10.9	4.0	21.9	15.9	25.6 (25.7)	0.30
1968	21.8 (21.7)	5.1 (5.1)	9.9	10.2	4.9	20.0	15.0	23.0 (23.2)	0.14
1969	20.5 (21.3)	4.8 (5.0)	9.5	10.2	4.7	19.6	14.9	21.8 (21.1)	0.15
1970	19.6 (20.0)	5.2 (5.1)	9.3	9.5	3.3	18.7	12.7	19.6 (19.3)	0.19
1971	19.0 (19.7)	5.0 (5.0)	8.5	9.3	3.3	17.7	12.6	18.4 (17.7)	0.14
1972	19.2 (19.5)	5.1 (5.2)	9.2	9.4	2.2	18.5	11.6	17.5 (17.4)	0.20
1973	18.9 (19.4)	5.0 (5.0)	8.4	9.0	2.0	17.4	11.0	16.8 (16.4)	0.10
1974	18.7 (19.1)	5.0 (5.0)	7.5	8.8	2.2	16.2	11.0	17.4 (16.8)	0.16
1975	17.5 (17.9)	4.7 (4.8)	7.2	8.6	1.7	15.7	10.3	15.0 (14.9)	0.03
1976	16.9 (17.4)	5.1 (5.0)	6.8	7.4	1.7	14.1	9.1	14.3 (13.7)	0.15
1977	17.2 (17.5)	5.1 (5.1)	6.7	7.2	1.8	13.8	8.9	13.9 (13.5)	0.16
1978	17.0 (17.3)	4.9 (5.1)	5.4	6.8	1.5	12.2	8.3	11.8 (11.8)	0.06
1979	16.7 (16.8)	5.3 (5.2)	4.7	6.9	1.5	11.6	8.4	13.3 (12.3)	0.08
1980	16.9 (17.0)	5.1 (5.0)	5.6	6.2	1.6	11.8	7.8	11.8 (11.2)	0.05
1981	16.8 (16.8)	4.8 (4.8)	5.4	5.4	1.2	10.8	6.6	9.7 (9.7)	0.08
1982	16.3 (16.4)	4.8 (4.8)	5.1	5.6	1.3	10.6	7.0	9.9 (9.9)	0.01
1983	15.3 (15.6)	5.0 (5.0)	4.7	5.7	1.3	10.3	7.0	10.1 (9.9)	0.07
1984	14.4 (14.4)	4.7 (4.7)	4.2	5.1	1.4	9.3	6.5	9.1 (8.8)	0.06
1985	14.0 (14.0)	4.6 (4.6)	3.8	3.9	1.1	7.7	5.0	7.6 (7.5)	0.05
1986	13.1 (13.0)	4.7 (4.7)	4.0	4.2	1.1	8.2	5.3	7.7 (7.7)	0.03
1987	12.5 (12.5)	4.8 (4.8)	4.1	3.7	1.2	7.8	4.8	7.5 (7.4)	0.04
1988	12.9 (13.3)	4.8 (4.9)	4.2	3.6	1.2	7.8	4.8	7.6 (7.4)	0.04

Rates : (1) & (2) : per 1 000 population; (4), (5), (6), (8) & (9) : per 1 000 live births;

Figures in brackets were calculated by using adjusted births & deaths figures for 1961-1968 and known births & deaths from 1969 onwards. Vietnamese refugees are excluded from all known birth and death figures.

TABLE 10 HONG KONG DEATH RATES 1974 TO 1988 (Deaths per 1 000 population)

	1974	1975	1976	1977	1978	1979	1980	1981	1982	1983	1984	1985	1986	1987	1988
Standardised* Death Rate	10.55	10.19	10.60	10.49	10.18	10.06	9.61	9.09	8.97	9.13	8.52	8.17	8.11	8.06	7.84
Crude Death Rate	5.04	4.75	5.13	5.12	4.89	5.31	5.13	4.82	4.84	4.96	4.74	4.64	4.70	4.80	4.82
Age Specific Death Rate															
0	17.37	14.38	14.31	13.78	11.85	13.05	12.04	9.94	9.65	9.62	8.64	7.42	7.28	7.15	7.69
1 - 4	1.09	0.77	0.84	0.78	0.62	1.01	0.69	0.54	0.53	0.55	0.45	0.39	0.38	0.37	0.37
5 - 9	0.39	0.38	0.40	0.31	0.23	0.34	0.29	0.22	0.24	0.18	0.24	0.20	0.18	0.16	0.19
10 - 14	0.36	0.28	0.32	0.33	0.27	0.29	0.29	0.31	0.25	0.24	0.21	0.21	0.23	0.18	0.18
15 - 19	0.53	0.44	0.56	0.45	0.36	0.50	0.47	0.40	0.39	0.39	0.31	0.31	0.34	0.28	0.34
20 - 24	0.94	0.73	0.79	0.71	0.60	0.86	0.81	0.59	0.57	0.56	0.49	0.43	0.44	0.40	0.40
25 - 29	1.16	0.89	1.00	0.99	0.76	1.11	1.00	0.80	0.72	0.61	0.60	0.58	0.50	0.52	0.48
30 - 34	1.71	1.22	1.57	1.15	1.09	1.28	1.25	1.01	0.92	0.78	0.80	0.72	0.75	0.71	0.64
35 - 39	1.78	1.58	1.81	1.84	1.53	1.71	1.64	1.39	1.30	1.18	1.00	1.05	1.08	0.98	1.03
40 - 44	3.06	2.85	2.83	2.75	2.19	2.70	2.37	2.27	2.36	2.09	2.02	1.82	1.82	1.49	1.56
45 - 49	4.52	4.08	4.56	4.24	3.86	4.32	4.08	3.79	3.65	3.28	3.26	3.10	2.88	3.01	2.65
50 - 54	7.23	6.71	6.99	6.36	6.55	6.58	6.19	5.87	6.02	5.88	5.41	5.40	5.21	5.06	4.75
55 - 59	10.84	10.75	10.77	10.59	10.08	10.74	10.61	9.49	9.07	9.18	8.50	8.41	7.78	7.97	7.85
60 - 64	18.43	16.85	17.79	17.63	15.59	16.41	15.24	14.68	15.07	15.44	14.31	13.28	13.03	12.42	12.21
65 - 69	26.21	25.57	27.62	27.26	25.64	26.56	25.28	23.38	22.33	22.58	21.54	20.84	20.87	20.78	20.01
70 - 74	38.10	35.82	39.30	37.55	37.10	37.79	35.85	34.11	34.65	36.82	34.46	32.54	31.90	31.70	30.23
75 - 79	53.13	53.33	59.98	56.94	52.71	55.47	53.10	51.04	49.10	48.07	48.49	47.05	49.72	49.77	48.77
80+	102.57	98.59	104.01	108.19	102.49	103.98	101.00	93.24	93.45	97.74	87.45	83.36	81.96	83.75	82.56

*Basing on population figures for England and Wales 1980 (Reference : United Nations Demographic Year-Book 1981)

TABLE 11 MAJOR CAUSES OF INFANT DEATHS 1984 TO 1988

Disease Group	Detailed List No. 9th Revision (1975)	1984	1985	1986	1987	1988
Meningitis	320,322	1	4	4	2	3
Bronchitis	466, 490-491	-	-	-	3	1
Viral pneumonia	480	-	1	-	-	-
Other bacterial pneumonia	482	-	-	-	1	-
Bronchopneumonia, organism unspecified	485	35	22	10	10	11
Pneumonia, organism specified	486	14	11	5	7	11
Gastroenteritis, colitis & other diarrheal disease	558, 009	-	-	4	-	1
Congenital anomalies	740-759	236	203	205	218	208
Obstetric complications & birth trauma	761-763, 767	2	3	-	-	1
Intrauterine hypoxia and birth asphyxia	768	65	50	47	35	38
Respiratory distress syndrome	769	95	49	87	70	69
Other respiratory conditions of fetus and newborn	770	56	39	20	20	29
Disorders relating to short gestation and unspecified low birthweight	765	43	66	52	42	56

TABLE 11 (Cont'd)

Disease Group	Detailed List No. 9th Revision (1975)	1984	1985	1986	1987	1988
Fetus or newborn affected by maternal conditions which may be unrelated to present pregnancy	760	-	-	-	1	-
Infections specific to perinatal period	771	17	19	23	7	5
Fetal and neonatal haemorrhage	772	28	11	8	19	10
Haemolytic disease of fetus or newborn due to isoimmunization and other perinatal jaundice	773-774	5	2	1	3	1
Endocrine and metabolic disturbances specific to the fetus and newborn	775	1	5	2	1	1
Haematological disorders of fetus and newborn	776	6	4	2	2	5
Perinatal disorders of digestive system	777	9	5	6	8	21
Conditions involving the integument and temperature regulation of fetus and newborn	778	28	24	34	29	12
Others	Residues of 001-999	68	62	43	47	73
All Causes	001-999	709	580	553	525	556

TABLE 12 NEONATAL AND POST NEONATAL DEATHS BY CAUSE 1984 to 1988

Disease Group	Detailed List No. 9th Revision	1984	1985	1986	1987	1988
<u>Neonatal Deaths (Birth - under 4 weeks)</u>						
All causes	001-999	502	379	383	338	350
Congenital abnormalities	740-759	164	120	118	131	128
Short gestation or unspecified low birthweight and respiratory distress syndrome	765, 769	132	104	130	97	106
Asphyxia and trauma during labour	767-768	67	51	43	32	37
Other specific perinatal disorders (e.g. infections, blood group incompatibilities etc)	760-764, 766, 773-779	45	37	43	42	31
All other causes	Residue of 001-999	94	67	49	36	48
<u>Post Neonatal Deaths (4 weeks - under 1 year)</u>						
All causes	001-999	207	201	170	187	206
Determined in the 'Perinatal Period':						
Congenital abnormalities	740-759	72	83	87	87	80
Short gestation or unspecified low birthweight and respiratory distress syndrome	765, 769	6	11	9	15	19
Birth trauma, asphyxia; and intra-uterine hypoxia	767-768	-	-	4	3	1
Other perinatal disorder (e.g. infections, haemolytic disease etc)	760-764, 766, 770-779	19	15	11	15	18
Acquired after Birth:						
Neoplasms	140-239	3	5	1	1	3
Sudden unexpected death	798	3	4	5	6	3
Injury and Poisoning	800-999	16	11	5	4	8
Other acquired diseases	001-139, 240-739, 780-797, 799	88	72	48	56	74

TABLE 13 MAJOR CAUSES OF MATERNAL DEATHS 1961, 1978 AND 1984 TO 1988

Detailed list No. 9th (1975) Revision	Pregnancy with abortive outcome other than spontaneous or legally induced abortion	Toxaemia of pregnancy	Haemorrhage of pregnancy & childbirth	Major puerperal infection	Ectopic pregnancy	Others	Total
Year							
1961	4	10	17	2	3	14	50
1978	-	1	1	-	-	3	5
1984	1	-	1	-	3	-	5
1985	-	2	1	-	-	1	4
1986	-	-	2	-	-	-	2
1987	-	-	1	-	-	2	3
1988	1	-	1	-	-	1	3

TABLE 14 PROPORTIONATE MORTALITY BY DISEASE GROUP 1961, 1978 AND 1984 TO 1988
(As Percentage of Total Deaths)

Disease Group	Detailed List No. 9th Revision	1961	1978	1984	1985	1986	1987	1988
Infective and parasitic	001 - 139	16.2	2.8	3.0	3.0	3.0	3.1	3.1
Neoplasms	140 - 239	12.3	26.2	28.8	29.8	31.0	30.7	30.0
Endocrine, nutritional, metabolic, immunity disorders and blood	240 - 289	0.9	1.5	1.1	1.1	1.1	1.0	0.9
Nervous system, sense organs and mental disorders	290 - 389	0.8@	0.8	0.7	0.8	0.7	0.9	0.7
Circulatory system	390 - 459	18.2	31.1	29.1	29.2	28.9	29.2	29.0
Respiratory system	460 - 519	16.3	14.4	16.5	16.3	15.8	16.3	17.5
Digestive system	520 - 579	7.7	4.4	4.3	4.3	4.1	4.0	4.1
Genitourinary system	580 - 629	2.0	3.6	4.3	4.4	4.6	4.5	4.5
Pregnancy, childbirth and puerperium	630 - 676	0.3	+	+	+	+	+	+
Skin, subcutaneous tissue and musculo-skeletal system	680 - 739	0.2	0.3	0.2	0.3	0.3	0.2	0.2
Congenital anomalies and conditions originating in the perinatal period	740 - 779	8.8	3.5	2.5	2.0	2.0	1.8	1.8
Symptoms, signs and ill-defined conditions	780 - 799	10.4	6.3	3.3	2.5	2.4	2.4	2.5
Injury and poisoning	800 - 999	5.9	5.1	6.2	6.3	6.1	5.9	5.7
All causes	001 - 999	100.0	100.0	100.0	100.0	100.0	100.0	100.0

@ Excluding Cerebrovascular Disease (formerly Vascular Lesion Affecting Central Nervous System under the Nervous System and Sense Organs) : 7.5% in 1961
+ Denote less than 0.05.

TABLE 15 THE TEN LEADING CAUSES OF DEATH BY AGE AND SEX 1988

Rank	Cause of Death	Detailed List No. 9th Revision	Sex	Age Group							Unknown
				All ages	0	1-4	5-14	15-44	45-64	65+	
	All causes	001-999	M F X T	15 164 12 206 6 27 376	315 238 3 556	63 56 - 119	94 66 1 161	1 297 703 1 2 001	4 697 2 087 - 6 784	8 694 9 055 - 17 749	4 1 1 6
1	Malignant neoplasms	140-208	M F T	5 040 3 137 8 177	2 1 3	8 7 15	26 20 46	418 286 704	2 134 913 3 047	2 452 1 910 4 362	- - -
2	Heart diseases, including hypertensive heart disease	390-429	M F T	2 414 2 185 4 599	2 1 3	2 2 4	8 5 13	95 44 139	618 304 922	1 688 1 829 3 517	1 - 1
3	Cerebrovascular disease	430-438	M F T	1 456 1 689 3 145	- 1 1	- - -	2 1 3	42 26 68	414 262 676	998 1 398 2 396	- 1 1
4	Pneumonia, all forms	480-486	M F T	1 007 1 006 2 013	13 9 22	6 8 14	2 6 8	40 26 66	190 57 247	756 900 1 656	- - -
5	Injury and poisoning	800-999	M F T	972 579 1 551	5 8 13	20 8 28	32 18 50	469 195 664	237 138 375	208 212 420	1 - 1
6	Nephritis, nephrotic syndrome and nephrosis	580-589	M F T	484 523 1 007	2 3 5	1 1 2	- 1 1	19 13 32	133 112 245	329 393 722	- - -

TABLE 15 (Cont'd)

Rank	Cause of Death	Detailed List No. 9th Revision	Sex	Age Group							Unknown
				All ages	0	1-4	5-14	15-44	45-64	65+	
7	Bronchitis, chronic and unspecified, emphysema & asthma	490-493	M F T	325 189 514	- - -	- 1 1	1 1 2	22 13 35	106 32 138	196 142 338	- - -
8	Septicaemia	038	M F T	180 229 409	4 1 5	2 2 4	1 1 2	11 5 16	48 25 73	114 195 309	- - -
9	Tuberculosis (including late effects of tuberculosis)	010-018, 137	M F T	290 98 388	1 - 1	- 1 1	1 2 3	20 9 29	87 17 104	181 69 250	- - -
10	Chronic liver diseases and cirrhosis	571	M F T	213 89 302	- - -	- - -	- - -	19 4 23	128 32 160	65 53 118	1 - 1
	Certain conditions originating in the perinatal period	760-779	M F X T	157 90 1 248	157 90 1 248	- - - -	- - - -	- - - -	- - - -	- - - -	- - - -
	Diabetes mellitus	250	M F T	90 121 211	- - -	- - -	- - -	3 3 6	21 17 38	66 101 167	- - -
	All other causes	Residue of 001-999	M F X T	2 536 2 271 5 4 812	129 124 2 255	24 26 - 50	21 11 1 33	139 79 1 219	581 178 - 759	1 641 1 853 - 3 494	1 - 1 2

Note : X indicates unknown sex.

TABLE 15(a) SUPPLEMENTARY CLASSIFICATION OF EXTERNAL CAUSES OF INJURY AND POISONING 1988

External Cause of Death	Detailed List No. 9th Revision	Sex	Age Group							
			All ages	0	1-4	5-14	15-44	45-64	65+	Unknown
All accidents, poisonings and violence	E800-E999	M	977	5	20	32	470	239	210	1
		F	582	9	8	18	196	138	213	-
		T	1 559	14	28	50	666	377	423	1
Transport accidents	E800-E848	M	184	-	3	10	89	40	42	-
		F	123	-	1	7	26	27	62	-
		T	307	-	4	17	115	67	104	-
Accidental poisonings	E850-E869	M	46	-	-	-	31	10	5	-
		F	14	1	-	-	7	4	2	-
		T	60	1	-	-	38	14	7	-
Other accidents, misadventures & adverse effect	E870-E949	M	277	1	11	19	114	78	53	1
		F	99	6	6	7	18	12	50	-
		T	376	7	17	26	132	90	103	1
Suicide and self-inflicted injury	E950-E959	M	317	-	-	1	144	80	92	-
		F	262	-	-	1	104	77	80	-
		T	579	-	-	2	248	157	172	-
Homicide and injury purposely inflicted by other persons	E960-E969	M	45	3	6	2	26	7	1	-
		F	16	2	1	2	7	2	2	-
		T	61	5	7	4	33	9	3	-
Other violence	E970-E999	M	108	1	-	-	66	24	17	-
		F	68	-	-	1	34	16	17	-
		T	176	1	-	1	100	40	34	-

TABLE 16 LEADING CAUSES OF DEATH 1961, 1978 AND 1988 (Ranking According to 1988 Data)

Cause of Death	Number of Deaths			Percentage of Deaths from all causes			Rate per 100 000 population		
	1961	1978	1988	1961	1978	1988	1961	1978	1988
<u>All ages</u>									
All causes	18 738	22 843	27 376	100.0	100.0	100.0	591.5	489.4	481.9
1. Malignant neoplasms	2 280	5 978	8 177	12.2	26.2	29.9	72.0	128.1	143.9
2. Heart diseases, including hypertensive heart disease	1 866	3 893	4 599	9.9	17.1	16.8	58.9	83.4	81.0
3. Cerebrovascular disease	1 401	3 081	3 145	7.5	13.5	11.5	44.2	66.0	55.4
4. Pneumonia, all forms	2 665	2 087	2 013	14.2	9.1	7.3	84.1	44.7	35.4
5. Injury and poisoning	1 100	1 173	1 551	5.9	5.1	5.7	34.7	25.1	27.3
All other causes	9 426	6 631	7 891	50.3	29.0	28.8	297.6	142.1	138.9
<u>0 years</u>									
All causes	4 098	934	556	100.0	100.0	100.0	3 840.7	1 185.5	768.6
1. Congenital anomalies	157	306	208	3.8	32.8	37.4	147.1	388.4	287.5
2. Hypoxia, birth asphyxia & other respiratory conditions	142	172	136	3.4	18.4	24.5	133.1	218.3	188.0
3. Immaturity	1 142	141	56	27.9	15.1	10.1	1 070.3	179.0	77.4
4. Haemolytic disease of fetus or newborn, perinatal jaundice & other causes of perinatal morbidity	204	87	55	5.0	9.3	9.9	191.2	110.4	76.0
5. Pneumonia, all forms	1 166	103	22	28.5	11.0	3.9	1 092.8	130.7	30.4
All other causes	1 287	125	79	31.4	13.4	14.2	1 206.2	158.7	109.2

TABLE 16 (Cont'd)

Cause of Death	Number of Deaths			Percentage of Deaths from all causes			Rate per 100 000 population		
	1961	1978	1988	1961	1978	1988	1961	1978	1988
	<u>1-4 years</u>								
All causes	1 805	198	119	100.0	100.0	100.0	427.5	62.1	37.1
1. Injury and poisoning	107	49	28	5.9	24.8	23.5	25.3	15.4	8.7
2. Malignant neoplasms	18	25	15	1.0	12.6	12.6	4.3	7.8	4.7
3. Diseases of nervous system	18	21	15	1.0	10.6	12.6	4.3	6.6	4.7
4. Pneumonia, all forms	603	26	14	33.4	13.1	11.8	142.8	8.2	4.4
5. Congenital anomalies	14	33	10	0.8	16.7	8.4	3.3	10.4	3.1
All other causes	1 045	44	37	57.9	22.2	31.1	247.5	13.8	11.5
<u>5-14 years</u>									
All causes	587	226	161	100.0	100.0	100.0	77.7	25.1	18.6
1. Injury and poisoning	177	65	50	30.2	28.8	31.0	23.4	7.2	5.8
2. Malignant neoplasms	40	69	46	6.8	30.5	28.6	5.3	7.6	5.3
3. Heart disease, including hypertensive heart disease	33	7	13	5.6	3.1	8.1	4.4	0.8	1.5
4. Diseases of nervous system	29	16	12	5.0	7.1	7.5	3.8	1.8	1.4
5. Pneumonia, all forms	83	17	8	14.1	7.5	5.0	11.0	1.9	0.9
All other causes	225	52	32	38.3	23.0	19.9	29.8	5.8	3.7

TABLE 16 (Cont'd)

Cause of Death	Number of Deaths			Percentage of Deaths from all causes			Rate per 100 000 population		
	1961	1978	1988	1961	1978	1988	1961	1978	1988
	<u>15-44 years</u>								
All causes	2 665	2 004	2 001	100.0	100.0	100.0	201.6	90.5	67.8
1. Malignant neoplasms	512	624	704	19.2	31.1	35.2	38.7	28.2	23.9
2. Injury and poisoning	465	524	664	17.4	26.2	33.2	35.2	23.7	22.5
3. Heart diseases, including hypertensive heart disease	246	166	139	9.2	8.3	6.9	18.6	7.5	4.7
4. Cerebrovascular Diseases	74	73	68	2.8	3.6	3.4	5.6	3.3	2.3
5. Pneumonia, all forms	100	98	66	3.8	4.9	3.3	7.6	4.4	2.2
All other causes	1 268	519	360	47.6	25.9	18.0	95.9	23.4	12.2
<u>45-64 years</u>									
All causes	5 041	7 231	6 784	100.0	100.0	100.0	1 089.9	829.4	675.2
1. Malignant neoplasms	1 204	2 832	3 047	23.9	39.2	44.9	260.3	324.8	303.3
2. Heart diseases, including hypertensive heart disease	762	1 225	922	15.1	16.9	13.6	164.8	140.5	91.8
3. Cerebrovascular disease	569	918	676	11.3	12.7	10.0	123.0	105.3	67.3
4. Injury and poisoning	216	299	375	4.3	4.1	5.5	46.7	34.3	37.3
5. Pneumonia, all forms	278	374	247	5.5	5.2	3.6	60.1	42.9	24.6
All other causes	2 012	1 583	1 517	39.9	21.9	22.4	435.0	181.6	151.0

TABLE 16 (Cont'd)

Cause of Death	Number of Deaths			Percentage of Deaths from all causes			Rate per 100 000 population		
	1961	1978	1988	1961	1978	1988	1961	1978	1988
<u>65-years and over</u>									
All causes	4 524	12 223	17 749	100.0	100.0	100.0	4 519.5	4 339.9	3 782.7
1. Malignant neoplasms	503	2 421	4 362	11.1	19.8	24.6	502.5	859.6	929.6
2. Heart diseases, including hypertensive heart disease	817	2 492	3 517	18.1	20.4	19.8	816.2	884.8	749.6
3. Cerebrovascular disease	747	2 082	2 396	16.5	17.0	13.5	746.3	739.2	510.6
4. Pneumonia, all forms	435	1 469	1 656	9.6	12.0	9.3	434.6	521.6	352.9
5. Nephritis, nephrotic syndrome and nephrosis	88	189	722	1.9	1.6	4.1	87.9	67.1	153.9
All other causes	1 934	3 570	5 096	42.8	29.2	28.7	1 932.1	1 267.6	1 086.1

TABLE 17 NUMBER OF CANCER DEATHS BY AGE AND SEX 1988

T-List	Detailed List Number 9th Revision	Cause Group	Sex	All Ages	0-9	10-	20-	30-	35-	40-	45-	50-	55-	60-	65-	70-	75+	Unk
T080 (part)	147	Malignant neoplasm of nasopharynx	M F	341 101	- -	1 1	6 4	16 8	26 9	30 13	40 13	64 12	66 9	27 10	26 11	24 6	15 5	- -
T090	150	Malignant neoplasm of oesophagus	M F	317 62	- -	- -	- -	- -	4 1	- -	14 2	33 2	68 5	66 3	65 10	34 17	33 22	- -
T091	151	Malignant neoplasm of stomach	M F	317 187	- -	- -	1 2	5 5	3 6	12 6	9 2	17 5	40 16	50 19	64 24	49 25	67 77	- -
T093	153	Malignant neoplasm of colon	M F	269 257	- -	1 1	6 2	5 9	5 4	6 6	10 4	14 11	29 26	46 34	41 35	53 33	53 92	- -
T094	154	Malignant neoplasm of rectum, rectosigmoid junction and anus	M F	143 130	- -	- -	- 2	2 3	1 3	2 4	5 3	11 11	28 13	27 9	20 16	17 17	30 49	- -
T095	155	Malignant neoplasm of liver and intrahepatic bile ducts	M F	877 227	2 -	3 -	10 5	13 5	32 4	48 4	58 3	80 12	146 23	142 21	149 33	92 36	102 81	- -
T096	157	Malignant neoplasm of pancreas	M F	119 105	- -	- -	- -	2 2	1 2	4 2	5 1	11 7	14 10	18 13	21 18	18 17	25 33	- -
T100	161	Malignant neoplasm of larynx	M F	86 10	- -	- -	- -	1 -	- -	2 -	5 -	9 -	9 -	11 3	13 4	18 2	18 1	- -
T101	162	Malignant neoplasm of trachea, bronchus and lung	M F	500 861	- -	1 -	1 -	4 4	16 13	19 10	40 9	109 33	188 64	257 98	275 150	286 153	304 327	- -

TABLE 17 (Cont'd)

T-List	Detailed List Number 9th Revision	Cause Group	Sex	All Ages	0-9	10-	20-	30-	35-	40-	45-	50-	55-	60-	65-	70-	75+	Unk
T110	170	Malignant neoplasm of bone and articular cartilage	M F	22 13	-	4 1	3	1	1	2	1	2	1	2	2	2	3	-
T112	172	Malignant melanoma of skin	M F	4 9	-	-	-	-	-	-	-	-	2	1	1	-	2 3	-
T113	173	Other malignant neoplasm of skin	M F	9 5	-	-	2	1	-	-	-	1	-	-	1	1	3 3	-
T114	174	Malignant neoplasm of female breast	F	260	-	-	2	3	13	13	23	30	33	29	34	24	56	-
T120	180	Malignant neoplasm of cervix uteri	F	124	-	-	2	2	9	1	3	9	13	27	21	13	24	-
T122	179, 182	Malignant neoplasm of uterus, other and unspecified	F	44	-	-	-	-	3	1	1	3	3	11	6	2	14	-
T123	183	Malignant neoplasm of ovary and other uterine adnexa	F	90	1	2	2	1	2	2	3	15	11	8	13	17	13	-
T124	185	Malignant neoplasm of prostate	M	60	-	-	1	-	-	1	-	2	1	3	5	10	37	-
T125	186	Malignant neoplasm of testis	M	2	-	-	-	-	-	1	-	-	1	-	-	-	-	-

TABLE 17 (Cont'd)

T-List	Detailed List Number 9th Revision	Cause Group	Sex	All Ages	0-9	10-	20-	30-	35-	40-	45-	50-	55-	60-	65-	70-	75+	Unk
T126	188	Malignant neoplasm of bladder	M F	112 54	-	-	-	-	-	1	4	4	7	19	30	17	31	-
T131 (part)	193	Malignant neoplasm of thyroid gland	M F	9 24	-	-	1	-	-	-	1	-	2	1	1	-	4 9	-
T140	201	Hodgkin's disease	M F	1 1	-	-	1	-	-	-	-	-	-	1	-	-	-	-
T141 (part)	200, 202	Non-Hodgkin's lymphoma	M F	86 73	3	3	2	3	2	3	4	8	7	13	14	12	15	-
T141 (part)	203	Multiple myeloma and immunoproliferative neoplasms	M F	21 23	-	-	-	-	-	-	2	1	3	4	4	4	3	-
T142	204-208	Leukaemia	M F	123 88	12 7	7 11	17 3	8 5	9 2	6 4	11 3	8 4	8 10	10 11	6 6	9 7	12 15	-
T080-T142	140-146, 148-149, 152, 156, 158-160, 163-165, 171, 175, 181, 184, 187, 189-192, 194-199	Malignant neoplasm of other and unspecified sites	M F	622 389	9 9	10 4	15 103	8 10	16 9	24 11	23 9	54 20	70 32	88 47	89 56	103 62	119 105	-
	140-208	All forms of cancer	M F T	5040 3137 8177	26 19 45	29 23 52	59 44 103	68 64 132	115 83 198	157 81 238	232 84 316	428 187 615	688 279 967	786 363 1149	827 459 1286	749 462 1211	876 989 1865	-

TABLE 18 MAIN CAUSES OF DEATH FROM CANCER IN HONG KONG 1979 TO 1988

CAUSE OF DEATH Detailed List Number 9th Revision	Sex	1979		1980		1981		1982		1983		1984		1985		1986		1987		1988	
		D	R	D	R	D	R	D	R	D	R	D	R	D	R	D	R	D	R	D	R
ALL FORMS OF CANCER (140-208)	M	3774	148.2	4001	152.2	4025	149.1	4214	154.1	4539	163.8	4535	162.4	4590	163.0	4921	172.7	5075	175.8	5040	172.8
	F	2429	101.9	2429	99.8	2561	103.1	2596	102.6	2687	104.4	2812	107.9	2945	111.5	3133	116.8	3183	116.7	3137	113.5
Malignant neoplasm of nasopharynx (147)	M	360	14.1	349	13.3	360	13.3	361	13.2	370	13.4	346	12.4	316	11.2	324	11.4	329	11.4	341	11.7
	F	126	5.3	118	4.8	109	4.4	121	4.8	102	4.0	103	4.0	94	3.6	114	4.2	113	4.1	101	3.7
Malignant neoplasm of oesophagus (150)	M	264	10.4	287	10.9	265	9.8	272	9.9	281	10.1	278	10.0	319	11.3	316	11.1	310	10.7	317	10.9
	F	66	2.8	61	2.5	54	2.2	61	2.4	78	3.0	60	2.3	65	2.5	59	2.2	61	2.2	62	2.2
Malignant neoplasm of stomach (151)	M	286	11.2	295	11.2	278	10.3	290	10.6	309	11.2	284	10.2	265	9.4	325	11.4	316	10.9	317	10.9
	F	167	7.0	167	6.9	188	7.6	172	6.8	212	8.2	164	6.3	184	7.0	227	8.5	228	8.4	187	6.8
Malignant neoplasm of colon (153)	M	136	5.3	147	5.6	171	6.3	187	6.8	217	7.8	229	8.2	217	7.7	231	8.1	267	9.2	269	9.2
	F	154	6.5	161	6.6	163	6.6	183	7.2	184	7.1	207	7.9	231	8.7	213	7.9	243	8.9	257	9.3
Malignant neoplasm of rectum, rectosigmoid junction and anus (154)	M	118	4.6	103	3.9	127	4.7	107	3.9	146	5.3	160	5.7	140	5.0	155	5.4	145	5.0	143	4.9
	F	107	4.5	93	3.8	84	3.4	108	4.3	108	4.2	114	4.4	104	3.9	111	4.1	142	5.2	130	4.7
Malignant neoplasm of liver and intrahepatic bile ducts (155)	M	691	27.1	689	26.2	731	27.1	689	25.2	783	28.3	780	27.9	740	26.3	830	29.1	820	28.4	877	30.1
	F	178	7.5	204	8.4	201	8.1	198	7.8	232	9.0	212	8.1	229	8.7	224	8.3	234	8.6	227	8.2
Malignant neoplasm of trachea, bronchus and lung (162)	M	1062	41.7	1223	46.5	1200	44.4	1263	46.2	1370	49.4	1393	49.9	1457	51.7	1537	53.9	1609	55.7	1500	51.4
	F	600	25.2	583	24.0	626	25.2	699	27.6	632	24.6	735	28.2	766	29.0	811	30.2	856	31.4	861	31.1
Malignant neoplasm of breast (174 & 175)	M	1	*	1	*	-	-	2	0.1	1	*	-	-	4	0.1	5	0.2	2	0.1	2	0.1
	F	205	8.6	190	7.8	227	9.1	202	8.0	219	8.5	250	9.6	262	9.9	243	9.1	262	9.6	260	9.4
Malignant neoplasm of cervix uteri (180)	F	146	6.1	141	5.8	155	6.2	108	4.3	140	5.4	127	4.9	141	5.3	150	5.6	129	4.7	124	4.5

* Denote less than 0.05.

D - No. of Deaths.

R - Mortality Rate per 100 000 population.

TABLE 19 NEW CASES OF CANCER NOTIFIED TO THE CANCER REGISTRY BY AGE AND SEX 1985

T-List	Detailed List Number 9th Revision	Cause Group	Sex	All Ages	0-9	10-	20-	30-	35-	40-	45-	50-	55-	60-	65-	70-	75+	Unk
T080 (part)	147	Malignant neoplasm of nasopharynx	M F	763 318	-	4 2	46 24	64 28	83 47	75 33	104 34	114 30	94 37	75 26	53 19	29 26	19 12	3 -
T090	150	Malignant neoplasm of oesophagus	M F	487 119	-	-	2 -	2 1	3 -	12 -	26 4	54 11	73 8	87 13	93 26	76 19	57 37	2 -
T091	151	Malignant neoplasm of stomach	M F	524 343	1 -	2 -	2 9	6 8	14 12	13 13	24 12	55 16	72 37	84 36	84 51	91 39	75 107	1 3
T093	153	Malignant neoplasm of colon	M F	507 478	-	2 2	12 5	12 6	12 19	15 8	23 22	44 39	64 61	67 62	97 65	74 70	83 118	2 1
T094	154	Malignant neoplasm of rectum, rectosigmoid junction and anus	M F	346 244	-	1 -	5 4	9 3	6 10	12 8	25 11	45 19	34 23	46 36	65 26	47 35	49 67	2 2
T095	155	Malignant neoplasm of liver and intrahepatic bile ducts	M F	829 244	-	4 -	9 8	32 3	38 3	41 8	83 14	122 18	130 23	122 38	107 34	73 39	61 54	7 1
T096	157	Malignant neoplasm of pancreas	M F	93 85	1 -	-	1 1	-	2 -	1 1	7 3	5 6	12 12	18 14	15 18	16 12	15 18	-
T100	161	Malignant neoplasm of larynx	M F	244 29	-	-	2 -	1 -	2 -	5 -	14 2	23 -	37 4	57 5	43 6	32 3	28 8	-
T101	162	Malignant neoplasm of trachea, bronchus and lung	M F	1923 901	-	7 3	8 18	13 8	31 12	44 15	99 36	207 56	278 90	367 139	336 152	281 147	248 220	4 5

TABLE 19 (Cont'd)

T-List	Detailed List Number 9th Revision	Cause Group	Sex	All Ages	0-9	10-	20-	30-	35-	40-	45-	50-	55-	60-	65-	70-	75+	Unk
T110	170	Malignant neoplasm of bone and articular cartilage	M F	45 32	1 4	4 4	5 3	1 1	3 3	2 1	2 5	7 -	4 1	6 4	3 -	4 2	3 4	- -
T112	172	Malignant melanoma of skin	M F	24 26	- -	2 4	3 4	2 1	- 1	3 -	- -	5 -	3 2	3 3	- 4	2 6	1 3	2 -
T113	173	Other malignant neoplasm of skin	M F	135 125	- -	- -	4 3	4 -	4 4	5 5	14 11	15 7	17 6	22 12	13 15	12 20	16 38	9 4
T114	174	Malignant neoplasm of female breast	F	908	-	1	31	37	64	65	102	88	102	103	98	104	106	7
T120	180	Malignant neoplasm of cervix uteri	F	508	-	-	6	28	35	33	60	73	74	72	53	38	35	1
T122	179, 182	Malignant neoplasm of uterus, other and unspecified	F	204	-	3	3	8	15	7	22	36	31	24	25	13	16	1
T123	183	Malignant neoplasm of ovary and other uterine adnexa	F	184	-	10	13	9	14	14	12	20	25	21	12	16	18	-
T124	185	Malignant neoplasm of prostate	M	173	-	1	1	-	-	-	1	6	8	18	31	40	66	1
T125	186	Malignant neoplasm of testis	M	27	4	2	7	3	5	-	1	1	2	1	-	-	-	1

TABLE 19 (Cont'd)

T-List	Detailed List Number 9th Revision	Cause Group	Sex	All Ages	0-9	10-	20-	30-	35-	40-	45-	50-	55-	60-	65-	70-	75+	Unk
T126	188	Malignant neoplasm of bladder	M F	371 155	- -	1 1	1 1	3 -	8 3	5 2	13 2	22 5	35 14	56 19	70 19	71 32	86 53	1 4
T131 (part)	193	Malignant neoplasm of thyroid gland	M F	44 162	- -	1 3	6 27	5 19	4 18	2 10	5 12	4 15	6 16	9 11	2 8	- 12	- 9	- 2
T140	201	Hodgkin's disease	M F	16 12	4 -	4 1	2 4	1 1	- 1	- -	2 -	- 2	2 1	- -	- -	1 -	- 1	- 1
T141 (part)	200, 202	Non-Hodgkin's lymphoma	M F	226 174	7 5	13 1	15 13	11 8	5 8	14 6	12 9	28 18	24 15	19 17	29 22	29 19	18 33	2 -
T141 (part)	203	Multiple myeloma and immunoproliferative neoplasms	M F	44 45	- -	- -	- 1	- -	1 -	3 -	3 -	4 3	6 4	9 7	8 6	2 7	7 16	1 1
T142	204-208	Leukaemia	M F	206 188	29 26	25 24	29 24	9 14	12 10	13 8	7 15	17 10	18 16	13 13	13 6	11 11	9 10	1 1
	140-146, 148-149, 152, 156, 158-160, 163-165, 171, 175, 181, 184, 187, 189-192, 194-199	Malignant neoplasm of other and unspecified sites	M F	1080 832	17 23	18 15	35 39	23 27	27 40	54 19	66 39	85 73	150 83	174 87	160 107	141 94	118 180	12 6
T080-T142	140-208	All forms of cancer	M F T	8107 6316 14423	64 59 123	88 72 160	195 241 436	201 210 411	260 319 579	319 256 575	531 427 958	863 545 1408	1069 685 1754	1253 762 2015	1222 772 1994	1032 764 1796	959 1163 2122	51 41 92

TABLE 20 NEW OVERSEAS CASES OF CANCER DIAGNOSED IN HONG KONG 1985

T-List	Detailed List Number 9th Revision	Cause Group	Sex	All Ages	0-9	10-	20-	30-	35-	40-	45-	50-	55-	60-	65-	70-	75+
T080 (part)	141-144	Malignant neoplasm of oral cavity	M	3	-	-	-	-	-	-	-	-	-	1	2	-	-
T080 (part)	147	Malignant neoplasm of nasopharynx	M	24	-	-	3	3	5	1	4	3	3	-	1	1	-
T090	150	Malignant neoplasm of oesophagus	F	4	-	-	1	-	-	1	-	1	-	-	1	-	-
T096	157	Malignant neoplasm of pancreas	M	1	-	-	-	-	-	-	-	-	-	1	-	-	-
T100	161	Malignant neoplasm of larynx	M	1	-	-	-	-	-	-	-	1	-	-	-	-	-
T101	162	Malignant neoplasm of trachea, bronchus and lung	M	7	-	-	-	-	-	-	3	-	1	1	2	-	-
T111	171	Malignant neoplasm of connective and other soft tissue	M	1	-	1	-	-	-	-	-	-	-	-	-	-	-
T113	173	Other malignant neoplasm of skin	M	2	-	-	-	-	1	-	-	1	-	-	-	-	-
T114	174	Malignant neoplasm of female breast	F	5	-	-	-	-	-	1	-	-	2	1	1	-	-
T120	180	Malignant neoplasm of cervix uteri	F	7	-	-	-	-	-	1	1	2	-	3	-	-	-
T126	188	Malignant neoplasm of bladder	M	1	-	-	-	-	-	-	-	-	-	-	1	-	-
T130	191	Malignant neoplasm of brain	M	2	1	1	1	-	-	-	-	-	-	-	-	-	-
T130	191	Malignant neoplasm of brain	F	1	-	-	1	-	-	-	-	-	-	-	-	-	-
T130	160, 182, 193, 199, 200	Malignant neoplasm of other and unspecified sites	M	3	-	-	-	-	-	-	-	-	1	-	-	-	1
T130	160, 182, 193, 199, 200	Malignant neoplasm of other and unspecified sites	F	4	-	-	1	1	-	-	-	-	1	1	1	-	-
T080-T142	140-208	ALL forms of cancer	M	46	1	2	3	3	6	1	7	5	5	3	7	1	2
T080-T142	140-208	ALL forms of cancer	F	21	-	-	3	1	-	3	1	3	3	5	2	-	2
T080-T142	140-208	ALL forms of cancer	T	67	1	2	6	4	6	4	8	8	8	8	9	1	2

TABLE 21 DEATHS FROM HEART DISEASES BY AGE AND SEX 1988
(Including Hypertensive Disease)

I-List No.	Cause (with detailed list no.)	Sex	All Ages	0-	10-	20-	30-	35-	40-	45-	50-	55-	60-	65-	70-	75+	Unk
T250	ACUTE RHEUMATIC FEVER (390-392)	M	-	-	-	-	-	-	-	-	-	-	-	-	-	-	-
T250	ACUTE RHEUMATIC FEVER (390-392)	F	-	-	-	-	-	-	-	-	-	-	-	-	-	-	-
T251	CHRONIC RHEUMATIC HEART DISEASES (393-398)	M	56	-	-	3	-	3	2	2	3	7	5	9	7	15	-
T251	CHRONIC RHEUMATIC HEART DISEASES (393-398)	F	120	-	-	1	2	3	1	4	9	16	16	10	16	42	-
T260	Diseases of mitral valve (394)	M	16	-	-	-	-	-	-	1	2	3	2	4	2	3	-
T260	Diseases of mitral valve (394)	F	35	-	-	-	-	2	1	2	-	4	2	4	6	14	-
T260	HYPERTENSIVE HEART DISEASES (402, 404)	M	424	-	-	-	-	5	-	7	15	28	55	78	82	154	-
T260	HYPERTENSIVE HEART DISEASES (402, 404)	F	374	-	-	-	1	2	-	-	6	16	32	46	73	198	-
T261	OTHER HYPERTENSIVE DISEASES (401, 403, 405)	M	95	-	-	-	-	2	2	-	4	10	14	17	18	28	-
T261	OTHER HYPERTENSIVE DISEASES (401, 403, 405)	F	92	-	-	-	-	1	-	-	3	1	13	18	17	39	-
T270	ACUTE MYOCARDIAL INFARCTION (410)	M	962	-	1	2	3	9	16	24	54	79	124	166	191	292	1
T270	ACUTE MYOCARDIAL INFARCTION (410)	F	679	-	-	2	1	3	-	2	6	24	56	92	102	391	-
T271	OTHER ISCHAEMIC HEART DISEASES (411-414)	M	526	-	1	1	-	1	3	4	13	24	50	77	127	225	-
T271	OTHER ISCHAEMIC HEART DISEASES (411-414)	F	577	-	-	-	-	-	1	3	3	11	42	67	72	378	-
T280	DISEASES OF PULMONARY CIRCULATION (415-417)	M	190	1	2	2	1	3	1	3	7	25	22	32	38	53	-
T280	DISEASES OF PULMONARY CIRCULATION (415-417)	F	171	-	1	1	2	-	2	1	1	6	15	23	29	90	-
T281	OTHER FORMS OF HEART DISEASES (420-429)	M	161	3	11	15	7	7	-	5	8	15	11	16	23	40	-
T281	OTHER FORMS OF HEART DISEASES (420-429)	F	172	6	5	6	5	4	2	3	2	6	7	18	25	83	-
T250-T281	ALL FORMS OF HEART DISEASES (390-429)	M	2414	4	15	23	11	30	24	45	104	188	281	395	486	807	1
T250-T281	ALL FORMS OF HEART DISEASES (390-429)	F	2185	6	6	10	11	13	6	13	30	80	181	274	334	1221	-

TABLE 22 INFECTIOUS DISEASES NOTIFIED 1984 TO 1988

Disease	Cases						Deaths				
	1984	1985	1986	1987	1988	1984	1985	1986	1987	1988	
Amoebiasis	29	16	13	6	8	1	2	-	2	-	
Bacillary Dysentery	396	519	344	381	454	-	-	1	-	2	
Cerebrospinal Meningitis & Meningococcal Infections	8	12	6	2	6	-	-	1	-	-	
Chickenpox	2 433	1 194	1 635	1 879	3 436	3	-	1	1	-	
Cholera	1	2	30#	4	2	-	-	1	-	-	
Enteric Fever : Typhoid Paratyphoid	317	267	186	248	157	1	1	1	1	2	
Food Poisoning : Outbreaks	14	20	12	25	25	-	-	-	-	-	
(Persons affected)	233	278	223	378	534	-	-	-	-	-	
Leprosy	(1 340)	(958)	(1 076)	(1 566)	(1 239)	2	-	-	-	-	
	32	32	29	21	22	-	-	-	-	-	
Malaria	113	168	143	106	98	-	-	-	1	-	
Measles	678	280	215	194	3 162	2	1	-	1	8	
Ophthalmia Neonatorum	6	5	5	10	9	-	-	-	-	-	
Poliomyelitis	-	1	-	-	-	-	-	-	-	-	
Rabies (Human)	2*	-	2*	-	1*	2	-	2	-	1	
Scarlet Fever	5	1	9	3	10	-	-	-	-	-	
Tuberculosis	7 843	7 545	7 432	7 269	7 021	420	409	407	405	388	
Typhus (Urban)	1*	1	1	-	3	-	-	-	-	-	
Typhus (Scrub)	6	12	5	4	12	-	-	-	-	-	
Viral Hepatitis	1 780	1 601	1 425	1 554	2 398	12	13	19	23	37	
Whooping Cough	18	21	1	-	8	-	-	-	-	-	
Total	13 915	11 975	11 716	12 084	17 366	443	426	433	434	438	

Remarks : No case of smallpox, plague, epidemic louse-borne typhus, yellow fever or relapsing fever was reported during the specified years.

* Imported cases

Including 7 imported cases

TABLE 23 NOTIFICATION AND DEATH RATES OF SELECTED INFECTIOUS DISEASES 1984 TO 1988

Disease	Notification Rate (per 100 000 population)						Death Rate (per million population)				
	1984	1985	1986	1987	1988	1984	1985	1986	1987	1988	
Amoebiasis	0.54	0.29	0.23	0.11	0.14	0.19	0.37	-	0.36	-	
Bacillary Dysentery	7.34	9.51	6.22	6.79	7.99	-	-	0.18	-	0.35	
Cerebrospinal Meningitis & Meningococcal Infections	0.15	0.22	0.11	0.04	0.11	-	-	0.18	-	-	
Enteric Fever (Typhoid & Paratyphoid)	6.13	5.26	3.58	4.86	3.20	0.19	0.18	0.18	0.18	0.35	
Measles	12.56	5.13	3.89	3.46	55.66	0.37	0.18	-	0.18	1.41	
Tuberculosis	145.30	138.28	134.33	129.49	123.58	77.81	74.96	73.56	72.15	68.29	
Viral Hepatitis	32.98	29.34	25.76	27.68	42.21	2.22	2.38	3.43	4.10	6.51	

TABLE 24 SELECTED INFECTIOUS DISEASES NOTIFIED BY AGE AND SEX 1988

Age Group	Tuberculosis		Viral Hepatitis		Enteric Fever		Bacillary Dysentery	
	M	F	M	F	M	F	M	F
0 - 4	28	17	8	5	12	10	57	31
5 - 9	16	15	42	31	4	8	28	30
10 - 14	27	42	99	60	8	11	27	10
15 - 19	214	194	212	119	9	6	11	19
20 - 24	423	362	395	202	11	12	17	21
25 - 29	497	367	339	139	18	12	15	27
30 - 34	410	252	192	91	7	8	17	14
35 - 39	326	151	108	41	6	9	10	9
40 - 44	256	103	63	19	3	2	3	5
45 - 49	290	79	41	10	3	-	4	2
50 - 54	369	79	43	16	1	1	13	2
55 - 59	447	96	29	14	2	2	6	11
60 - 64	442	107	23	10	-	2	6	7
65 - 69	389	110	9	5	3	2	5	6
70 - 74	303	101	5	4	-	3	6	7
75 & over	335	174	4	6	1	4	4	10
Unknown	-	-	1	4	-	-	3	4
Total	4 772	2 249	1 613	776	88	92	232	215
	7 021		2 398 (9)		182 (2)		454 (7)	

Note : Figures in brackets denote sex unknown included.

TABLE 25 MALARIA 1982 TO 1988

Year	Cases Notified					Total Cases
	Imported	Induced	Indigenous	Relapsing	Undetermined	
1982	77	2	1	-	-	80
1983	94	1	30	-	-	125
1984	101	-	10	2	-	113
1985	162	1	3	-	2	168
1986	127	1	8	3	4	143
1987	96	-	6	3	1	106
1988	94	-	1	3	-	98

Note :

- (1) All imported relapsing cases are grouped under 'imported cases'.
- (2) Congenital and blood transfusion cases are grouped under 'induced cases'.

Identification of Parasites

Year	P. Vivax	P. Falciparum	P. Malariae	P. Ovale	Mixed Infection	Species Undetermined	Total
1982	69	7	3	-	-	1	80
1983	103	9	6	-	-	7	125
1984	92	12	3	1	2	3	113
1985	134	19	4	-	11	-	168
1986	122	8	3	-	7	3	143
1987	92	12	1	-	-	1	106
1988	85	12	1	-	-	-	98

TABLE 26 PROPHYLACTIC IMMUNIZATIONS 1984 TO 1988

Immunizations	1984	1985	1986	1987	1988
Smallpox	229	-	-	-	-
Cholera	5 595	5 691	138 872	7 146	6 238
Diphtheria/Pertussis/Tetanus	263 317	257 083	243 069	234 391	231 818
Diphtheria/Tetanus	177 964	141 742	178 733	177 864	191 294
Typhoid					
1st Dose	1 180	1 147	1 530	58	20
2nd Dose	102	138	75	41	12
Booster Dose	720	858	856	1 718	1 798
Tuberculosis (BCG)					
Infant	78 389	77 199	72 780	71 049	77 187
Others	52 622	60 393	68 956	57 705	67 816
Poliomyelitis					
Type I for Newborn	76 096	74 312	69 357	67 338	74 071
1st Dose - Trivalent	70 608	67 302	63 137	63 813	70 237
2nd Dose - Trivalent	74 679	72 175	67 020	63 545	66 200
Booster Dose - Trivalent	224 226	212 710	227 505	225 159	227 775
Measles	74 788	71 820	67 417	62 905	100 878
Rubella	44 079	45 611	43 388	47 101	47 478
Tetanus#	-	-	-	237 661	223 339
Hepatitis B(HBV)*	-	-	-	-	13 920

Since January 1987

* Since November 15, 1988

TABLE 27 TUBERCULOSIS MORTALITY 1961, 1978 AND 1984 TO 1988

Year	Total Deaths from Tuberculosis	Tuberculosis Death Rate per 100 000 Population	Tuberculosis Deaths as percentage of total registered deaths	Average Age at death from Tuberculosis
1961	1 907	60.2	10.2	43.0
1978	420	9.0	1.8	61.0
1984	420	7.8	1.6	64.5
1985	409	7.5	1.6	65.0
1986	407	7.4	1.6	69.0
1987	405	7.2	1.5	69.0
1988	388	6.8	1.4	69.0

TABLE 28 TUBERCULOSIS IN CHILDHOOD 1961, 1978 AND 1984 TO 1988

Year	Percentage* of newborns receiving BCG	Percentage of Tuberculosis Deaths under 5 years	Percentage of Tuberculosis Deaths under 1 year	Infantile Mortality from Tuberculosis (per 1 000 births)
1961	77.77	11.48	2.62	0.46
1978	98.14	0.48	0.24	0.01
1984	99.68	0.24	0.24	0.01
1985	99.75	-	-	-
1986	99.85	-	-	-
1987	99.81	-	-	-
1988	99.90	0.52	0.26	0.01

* Percentage of newborns based on registered birth figures in 1961 and based on known birth figures since 1970.

TABLE 29 TUBERCULOSIS NOTIFICATIONS 1961, 1978 AND 1984 TO 1988

Year	Government Chest Clinics	Other Government Institutions	Tung Wah Group Hospitals	Other Non- Government Institutions & Private Sources	Total	Notification Rate per 100 000 population
1961	8 957	2 056	947	624	12 584	397.21
1978	3 897	556	244	1 926	6 623	141.90
1984	5 196	506	319	1 822	7 843	145.30
1985	5 118	432	394	1 601	7 545	138.28
1986	5 096	577	254	1 505	7 432	134.33
1987	4 754	493	309	1 713	7 269	129.49
1988	4 625	464	274	1 658	7 021	123.58

TABLE 30 WORK OF TUBERCULOSIS AND CHEST SERVICE 1988

Total attendances	725 468
Total patients attending (old & new)	90 510
Number of new patients	42 863
<u>Classification of new patients</u>	
I) NSD [#] & Unknown	19 608(45.75)
II) Diseases other than tuberculosis	10 677(24.91)
III) Non-respiratory tuberculosis	412 (0.96)
a) Meninges	4(0.01)
b) Bones and joints	42(0.10)
c) Others	366(0.85)
IV) Respiratory tuberculosis	
a) Not active and unknown activity	6 375(14.87)
b) Active	5 590(13.04)
i) By bacteriology and extent	
Negative A1	2 277(5.31)
A2	387(0.90)
A3	56(0.13)
Positive B1	1 337(3.12)
B2	946(2.21)
B3	303(0.71)
Incomplete O1	228(0.53)
O2	40(0.09)
O3	16(0.04)
ii) By previous history and treatment	
No previous history of tuberculosis	4 916(11.47)
Previously diagnosed, no treatment	15(0.03)
Previously diagnosed, with treatment	640(1.49)
Previous history not known	19(0.05)
Total with examination completed	42 662(99.53)

Note : Figures in brackets denote percentage of total new patients.

Nil of significance detected.

TABLE 31 EXAMINATION OF NEW CONTACTS OF TUBERCULOSIS PATIENTS 1988

Number of patients listed	7 433
Number of contacts listed	18 855
(a) Number of children with negative tuberculin/tine*	699
Number of children given BCG	689
(b) Number of contacts X-rayed	14 433 (100.00%)
<u>Results</u>	
NSD# & Unknown	13 681 (94.79%)
Diseases other than TB	175 (1.21%)
Respiratory TB	
Active A (negative by bacteriology)	104 (0.72%)
B (positive by bacteriology)	50 (0.35%)
O (incomplete investigation)	12 (0.08%)
Not active	370 (2.57%)
Non-respiratory TB	3 (0.02%)
Result not yet known	38 (0.26%)

Nil of significance detected.

* For NT Chest Clinics only.

TABLE 32 ANNUAL ATTENDANCES AND TREND OF VENEREAL DISEASES 1979 TO 1988

NEW INCIDENTS	1979	1980	1981	1982	1983	1984	1985	1986	1987	1988
VENEREAL DISEASES										
Syphilis	1 130	1 092	970	830	699	649	634	563	518	429
Non-congenital										
Primary	37	102	109	94	70	36	54	36	59	45
Secondary	14	36	37	20	29	13	19	19	27	21
Early Latent	282	239	188	130	149	150	89	97	77	78
Late Latent	706	663	588	553	428	421	450	376	322	264
All Others	15	18	13	12	10	22	11	26	27	18
Congenital										
Under 1 year	22	6	-	-	2	1	1	-	-	-
Over 1 year	54	28	35	21	11	6	10	9	6	3
Gonorrhoea	2 761	2 629	3 362	4 546	4 275	4 967	4 796	5 005	6 035	4 919
Non-specific Genital Infection*	-	-	549	797	599	564	968	766	630	2 147
Non-gonococcal Urethritis	974	960	943	1 294	1 086	1 203	1 696	2 304	2 679	2 672
Chancroid	163	357	439	310	261	422	628	370	184	137
Lymphogranuloma Venereum	36	76	75	31	31	25	20	14	17	32
Herpes Genitalis+	-	267	268	414	497	351	346	370	731	919
Genital Warts+	-	456	673	971	1 368	1 563	1 897	1 854	2 196	2 330
Pediculosis Pubis+	-	66	42	86	103	137	180	283	367	474
Scabies+	-	-	-	229	390	245	228	183	134	157
Others (unclassified)	324	399	280	298	207	227	264	135	722	604
ALL VENEREAL DISEASES	5 388	6 302	7 601	9 806	9 516	10 353	11 657	11 850	14 213	14 820
NON-VENEREAL DISEASES	4 900	6 250	6 643	6 820	7 701	8 273	14 935	9 226	8 522	6 186
SKIN DISEASES	16 392	15 470	14 964	16 960	17 664	14 922	8 696	10 729	12 271	10 321
NEW ATTENDANCES (ALL TYPES)	26 680	28 022	29 208	33 586	34 881	33 548	35 288	31 805	35 006	25 606 [@]
TOTAL ATTENDANCES (ALL TYPES)	142 691	144 641	150 852	166 933	173 957	176 024	184 534	180 072	177 327	153 851

* Formerly classified as non-veneraeal diseases

+ Formerly classified as skin diseases

@ Before 1988, each new patient attending the clinics was classified under one type of disease and the number of new incidents of all types of diseases added up to the total number of new attendances. Starting from 1988, each new patient would be classified under one or more types of diseases. The total number of incidents of all types of diseases would thus not add up to the total number of new attendances.

TABLE 33 VDRL EXAMINATIONS IN EXPECTANT MOTHERS 1984 TO 1988

Examinations	1984	1985	1986	1987	1988
Venous Blood	82 228	83 948	79 622	79 578	86 325
Positive	438	434	307	362	204
% Positive	0.53	0.52	0.39	0.45	0.24

TABLE 34 LEPROSY CASES 1978 TO 1988

I) Incidence of Leprosy

Year	New Cases		New Cases Admitted to Lai Chi Kok Hospital
	No.#	Incidence Rate per 100 000 population	
1978	74	1.6	23
1979	70	1.4	20
1980	60	1.2	18
1981	55	1.1	10
1982	57	1.1	14
1983	38	0.7	6
1984	32	0.6	4
1985	32	0.6	9
1986	29	0.5	5
1987	21	0.4	4
1988	22	0.4	2

Including imported cases.

II) Number of New Cases by Age 1988

Age Group	No. of cases
Under 1	-
1 - 4	-
5 - 9	-
10 - 14	-
15 - 19	-
20 - 24	2
25 - 29	1
30 - 34	2
35 - 39	3
40 - 44	2
45 - 49	-
50 - 54	6
55 - 59	1
60 & over	5
Total	22

TABLE 35 ANALYSIS OF NEW DERMATOLOGICAL CASES PRESENTING AT CLINICS 1988

Dermatological Condition	No. of New Cases	Dermatological Condition	No. of New Cases
Acanthosis nigricans	1	Panniculitis	1
Acne	621	Parapsoriasis	6
Alopecia	265	Parasitophobia	2
Amyloidosis	26	Paronychia	112
Apthous ulcer	1	Pediculosis	10
Callus	46	Pemphigoid	9
Carcinoma	99	Pemphigus	4
Contact dermatitis	353	Photodermatosis	4
Cysts	30	Pigmentary disorders	232
Dermatitis (all types)	32	Pitted keratolysis	2
Dermatofibroma	12	Pityriasis alba	163
Dermatomyositis	7	Pityriasis capitis (Dandruff)	18
Dermatosis of pregnancy	3	Pityriasis rosea	121
Drug eruption	63	Pityriasis rubra pilaris	1
Eczema (all types)	3 847	Pityriasis versicolor	297
Epidermolysis bullosa	5	Pityrosporum folliculitis	4
Erythema	35	Polyarteritis nodosa	1
Erythrasma	3	Prurigo nodularis	45
Granuloma	27	Pruritus	125
Herpes infections	161	Psoriasis	447
Hyperhidrosis	19	Purpura	10
Ichthyosis	20	Pyoderma	127
Insect bite reaction	87	Rosacea	96
Intertrigo	20	Scabies	310
Keloid	60	Scleroderma	3
Keratoacanthoma	2	Seborrhoeic wart	87
Keratosis (all types)	54	Skin tag	51
Lichen amyloidosis	17	Striae	7
Lichen nitidus	6	Syringoma	1
Lichen planus	23	Tinea (all types)	1 391
Lichen sclerosis et atrophicus	5	TB skin	6
Lipoma	3	Trichoepithelioma	2
Lupus erythematosus (all types)	14	Tumors, benign	11
Lymphocytoma cutis (benign)	1	Urticaria	355
Miliaria	20	Urticaria (Physical)	44
Molluscum contagiosum	31	Vasculitis	1
Monilia infection	17	Venous disorders	13
Nail dystrophy	47	Verruca	1 234
Nevi (all types)	162	Xanthoma	19
Neurodermatitis	380	Leprosy	3
Neurofibroma	3	Miscellaneous	677
		TOTAL	12 680

TABLE 36 DISTRIBUTION OF FAMILY HEALTH CENTRES AS AT 31ST MARCH 1989

Centre	Hong Kong	Kowloon	NT and Islands	Total
<u>Maternal & Child Health</u>				
Full-time				
with Midwifery Service	-	7	3	10
without Midwifery Service	8	8	6	22
Part-time				
with Midwifery Service	-	-	8	8
without Midwifery Service	1	2	2	5
<u>Comprehensive Observation Service</u>				
Full-time	8	16	11	35
Part-time	1	1	8	10
<u>Family Planning</u>				
Full-time	-	2	3	5
Part-time	10	15	18	43

TABLE 37 WORK OF FAMILY HEALTH SERVICE 1987 AND 1988

(Maternal and Child Health)

	1987	1988
<u>Number of Centres (as at 31.12.88)</u>		
Full-time	31	32
Part-time	14	13
<u>Ante-natal Sessions</u>		
Total sessions	4 266	4 371
New attendances	28 972	29 618
Total attendances	203 986	212 681
Average attendance per session	47.82	48.66
Average attendance per person	7.04	7.18
<u>Post-natal Sessions</u>		
Total sessions	1 665	1 664
New attendances	23 703	23 360
Total attendances	23 959	23 757
Percentage presenting with some abnormalities	3.06%	2.96%
<u>Infant Welfare Sessions (0-2 years of age)</u>		
Total sessions	9 876	10 198
New attendances	65 218	70 262
Total attendances	1 043 515	1 074 980
<u>Toddler Welfare Sessions (2-5 years of age)</u>		
Total sessions	1 686	1 721
New attendances	47 355	51 340
Total attendances	134 506	157 477
Percentage presenting with some abnormalities (0-5 years of age)	3.08%	3.40%
<u>Home Visits</u>	106 415	97 541

TABLE 38 WORK OF FAMILY HEALTH SERVICE 1987 AND 1988

(Comprehensive Observation Service)

	<u>1987</u>	<u>1988</u>
Number of centres (as at 31.12.88)		
Full-time	34	35
Part-time	11	10
Number of sessions held	17 666	18 602
Number of children examined	150 195	151 591
Number of new cases	60 551	65 157
Total number of developmental screening tests done	198 787	201 319
Number of children found to have defects/disabilities* (including provisional cases)	2 656	4 651
Number of referrals	3 710	4 544

* Based on notification forms received.

TABLE 39 WORK OF FAMILY HEALTH SERVICE 1987 AND 1988

(Family Planning)

		<u>1987</u>	<u>1988</u>
Number of centres (as at 31.12.88)	Full-time	5	5
	Part-time	43	43
	Total	48	48
Number of sessions provided		8 144	8 265
Number of clients	New	43 063	42 896
	Old	95 377	96 063
	Total	138 440	138 959
Number of attendances		472 468	472 924
Characteristics of new clients			
I. Contraceptive method	Pills	15 028	14 715
	Injections	2 615	2 452
	IUD's	615	562
	Condoms	23 156	23 978
	Other methods	1 649	1 189
	Total	43 063	42 896
II. Age	Under 20	700	683
	20 - 24	7 042	6 129
	25 - 29	19 079	18 924
	30 - 34	11 736	12 399
	35 - 39	3 582	3 729
	40 - 44	731	850
	45 & over	193	182
	Total	43 063	42 896

Note : New clients refer to

- (1) Clients never attend family planning clinics.
- (2) F.P.Á. clients first attend our clinics after the date of take-over.
- (3) Return of clients after pregnancy, advised pregnancy, advised sterilization and referred to hospital.
- (4) Return of non-I.U.D. clients whose date of last visit was over 2 years ago and I.U.D. clients whose date of last visit was over 4 years ago.

TABLE 40 WORK OF OCCUPATIONAL HEALTH DIVISION 1987 AND 1988

	1987	1988
I. Number of Confirmed Occupational Diseases		
Asbestos - related disease	2	4
Beat knee	-	1
Compressed air illness		
Compression barotrauma	1	3
Decompression sickness		
(a) Type I	136	103
(b) Type II	3	2
(c) Dysbaric osteonecrosis	3	-
Cramp of hand or forearm	3	-
Gas poisoning	25	76
Inflammation of skin	27	27
Radiation injury	1	-
Silicosis	168	167
Tenosynovitis of hand or for forearm	10	7
II. Occupational Injuries		
No. of occupational injuries reported	104 793	110 827
No. of accidents requiring notification under Employees' Compensation Ordinance	97 509	103 196
III. Employees' Compensation Case Work		
Total no. of interviews with injured employees	220 994	242 396
Cases assessed by Ordinary Assessment Boards#	20 046	20 196
Cases assessed by Medical Assessment Boards+	4	1
Cases assessed by Special Assessment Boards@	7	5
Cases assessed by Prostheses and Surgical Appliances Boards@	685	643
# Nursing staff assisted in the preparation and clearance of cases of Ordinary Assessment Boards.		
+ Employees' compensation cases occurring before 1.7.83 assessed by Occupational Health Officers.		
@ Employees' compensation cases occurring on and after 1.7.83 are assessed by statutory boards with the enactment of the Employees' Compensation (Amendment) Ordinance. Occupational Health Officers sat on Special Assessment Boards and Prostheses and Surgical Appliances Boards.		

TABLE 41 ENVIRONMENTAL AND BIOLOGICAL MONITORING AND SURVEY WORK OF OCCUPATIONAL HEALTH DIVISION 1988

I. Field Survey Work	No. of Surveys	No. of Samples Taken
(A) GAS, VAPOUR AND MIST MONITORING		
Acetone	9	7
Ammonia	15	19
Air bags (Unknown Compounds)	6	13
Arsine	1	1
Benzene	2	2
Carbon dioxide	9	15
Carbon monoxide	8	12
Chlorine	2	3
Chloroform	5	4
Chromic acid mist	26	17
Cyclohexane	3	3
Degreasing solvent (unknown)	1	1
Diethyl ether	8	8
Esters	5	5
Ethanol	8	8
Ethyl acetate	1	2
Explosive gas	13	23
Formaldehyde	2	1
Hexane	1	1
Hydrocarbon	1	1
Hydrogen chloride	3	3
Hydrogen cyanide	6	11
Hydrogen fluoride	6	3
Hydrogen sulphide	9	14
Freon	3	1
Iso-propyl alcohol	10	8
Ketones	1	1
MEK	2	3
Methyl mercaptan	1	1
Methylene chloride	4	3
MIBK	1	2
Mixed compounds (charcoal tube method)	102	178
Nitrogen dioxide	2	4
Oil mist	11	39
Oxygen	10	19
Ozone	23	20
Perchloroethylene	17	20
Phenol	1	2
Sodium meta bisulphite	1	1
Sulphuric acid mist	8	14
Styrene	15	40
THF	1	-
1,1,1-Trichloroethane	93	50
Trichloroethylene	60	88
Toluene	83	94
Toluene di-isocyanate	10	11
Vinyl chloride	1	2
Xylene	10	16

TABLE 41 (Cont'd)

I. Field Survey Work

<u>Nature of Survey Work</u>	<u>No. of Surveys</u>	<u>No. of Samples Taken</u>
(B) DUST MONITORING		
Asbestos	90	238
Cadmium hydroxide	1	1
Cotton	6	48
Fibre-glass	1	2
Lead	15	15
Nuisance	27	8
Quartz	124	220
Wood	2	1
Zinc	1	1
(C) VENTILATION STUDY		
General ventilation	299	334
Local exhaust	376	508
(D) PHYSICAL HAZARD STUDY		
Laser	1	-
UV	8	3
RF	15	20
General lighting	5	20
Thermal environment	12	19
Total	1 603	2 232

TABLE 41 (Cont'd)

II. Laboratory Analysis Work

<u>Nature of Analysis Work</u>	<u>No. of Analyses</u>	<u>No. of Samples/Specimens Collected</u>	
(A) CHEMICAL ANALYSIS			
Acid mist	(24)		(24)
Asbestos	(75)		(75)
Benzene	(11)		(11)
Chromium	1 (17)	1	(17)
Gas	(10)		(10)
Lead + other metal	(36)		(36)
Major component (solid sample)	(2)		(2)
Metal component	(10)		(10)
Miscellaneous	(5)		(5)
Mixed solvents (bulk)	(185)		(170)
Mixed solvents (charcoal tubes)	(122)		(122)
Oil mist	(31)		(31)
Other analysis (e.g. Gas, pH, H ₂ SO ₄ etc)	(42)		(38)
Quartz	(275)		(250)
Solvent	(2)		(2)
Sulphuric acid mist	8	8	
TDI	(6)		(6)
Welding fumes	(15)		(15)
Zinc	3	5	
(B) PHYSICAL ANALYSIS			
Asbestos analysis	3	1	
Asbestos (counting)	222	213	
Cotton dust	10	10	
Fibre-glass	4	4	
Metal (weighing of filter)	10	10	
Mineral dust	30 (10)	30	(10)
Nuisance dust	2	2	
Quartz analysis	6	6	
Respirable dust	86	83	
(C) BLOOD CHEMISTRY			
Blood lead	1 (5)	1	(5)
Blood heavy metal	1	1	
(D) URINALYSIS			
Glucose	396	396	
Lead	(5)		(5)
Protein	354	354	
Total	1 137 (888)	1 125 (844)	

Note : Figures in brackets were analyses/samples/specimens being referred to the Government Laboratory for chemical analysis.

TABLE 42 WORK OF PORT HEALTH SERVICE 1987 AND 1988

	1987	1988
Number of ships inspected	2 268	2 212
Number of deratting certificates issued	-	4
Number of deratting exemption certificates issued	412	410
Number of radio pratique granted	11 601	13 110
Number of medical assistance and advice given	71	64
Vaccinations done		
cholera	6 261	5 278
yellow fever	1 506	1 139
plague	15	-
typhoid	1 660	1 560

Table 43 WORK OF CENTRAL HEALTH EDUCATION UNIT, 1988

	No. of Occasion	No. of Attendance
I. Number of Centres :		3
II. Number of Campaigns :		14
III. Health Education Activities :		
Exhibition	15	101 240@
Workshop	178	10 020@
Audio-visual Shows	1 577	39 040@
Lectures/Seminars/Speeches/Talks	240	20 070@
Media Interviews (TV, radio, press)	138	
Health Education Van Broadcasting	147	
Health Education Telephone Hotline	74 257 [Ⓜ]	
Counselling and Information Provision	14 156	
IV. Special Project :		
No. of Young Health Leaders Trained	118¢	
Meeting and Training Sessions	17	
Health Education Activities by Young Health Leaders	44	10 158#
New OPD Video Programme	(23)	
Mass Communication Programme		
Newspaper Article (titles)	51	
TV Programme (episodes)	123	
V. Consultation and Advisory Activities :		
No. of Working Group Served	9	
No. of Training Group Served	24	
VI. Production of Health Education Materials :		
Printed Materials	3 485 199 ⁺	(38)
Audio-visual Materials		
Video	999 ⁺	(71)
Slide	101*	(14)
Tapes	728 ⁺	(98)
Kits	1 350*	(9)
Artwork	420	
Exhibits	83	
VII. Purchase of Audio-visual Materials :		
Film	2	
Video	28	
VIII. Resource Supply and Distribution :		
(i) Printed Materials	2 980 254 [≠]	(279)
(ii) Audio-visual Materials	5 937 [∅]	(514)

Notes : @ Figures are rounded to the nearest ten

Ⓜ No. of calls

¢ No. of persons

No. of participants

() No. of items

+ No. of copies

* No. of sets

≠ No. issued

∅ No. loaned out