

TABLE 1 (Cont'd)

Grade	Zone	Headquarters	Queen Mary Hospital	Queen Elizabeth Hospital	Princess Margaret Hospital	Kwai Chung Hospital	Lai Chi Kok Hospital	Kowloon Hospital	Castle Peak Hospital	Mental Health Centres	Tsao Yuk Hospital	Prince of Wales Hospital	Dental Service	TB & Chest Service	Regional Offices	Other Hospitals	Other Clinics & Services	Total	Strength on 31.3.81
*Principal Executive Officer/Chief Executive Officer/Senior Executive Officer/Executive Officer I/II		35		2	1								1		3		5	47	49
*Organisation & Methods Officer																		-	1
*Senior Assignment Officer/Assignment Officer I																		-	2
Senior Treasury Accountant/Treasury Accountant/Accounting Officer I		3																3	4
*Chinese Language Officer II		1																1	2
*Chief Hospital Admin./Senior Hospital Admin./Hospital Admin. I/Hospital Admin. II		8	3	5	4	3	1	2	2		3					1	10	42	37
*General Grade Staff		186	96	167	109	30	8	43	28	22	12	3	76	96	30	29	444	1379	1385
Senior Statistician/Statistician/Statistical Officer I/Statistical Officer II/Student Statistical Officer		18	1	2	1									2				24	18
*Senior Supplies Officer/Supplies Officer/Assistant Supplies Officer/Supplies Supervisor I/Supplies Supervisor II/Supplies Assistant		8	6	11	9	7	1	5	3		1		8			1	36	96	93

TABLE 1 (Cont'd)

Grade	Zone	Headquarters	Queen Mary Hospital	Queen Elizabeth Hospital	Princess Margaret Hospital	Kwai Chung Hospital	Lai Chi Kok Hospital	Kowloon Hospital	Castle Peak Hospital	Mental Health Centres	Tsao Yuk Hospital	Prince of Wales Hospital	Dental Service	TB & Chest Service	Regional Offices	Other Hospitals	Other Clinics & Services	Total	Strength on 31.3.81
Audiology Technician																		4	3
Chiropodist					2													2	-
Calligraphist		1																1	1
Senior Electrical Technician/Electrical Technician			4	4	1													13	10
Senior Foreman/Foreman				12														20	18
*Head Attendant																		-	1
Senior Health Inspector/Health Inspector I/II														5				11	10
Hospital Receptionist			3	3	3	1												11	8
Chief Information Officer/Senior Information Officer/Information Officer/Assistant Information Officer I		7																7	3
Kitchen Supervisor																1		6	5
Laundry Manager/Assistant Laundry Manager				3				1	1								3	6	6
Linen Production Unit Manager/Linen Production Unit Supervisor				1													5	6	6
Machinist																	94	94	81
Medical Board Assistant																	1	1	1

TABLE 1 (Cont'd)

Grade	Zone	Headquarters	Queen Mary Hospital	Queen Elizabeth Hospital	Princess Margaret Hospital	Kwai Chung Hospital	Lai Chi Kok Hospital	Kowloon Hospital	Castle Peak Hospital	Mental Health Centres	Tean Yuk Hospital	Prince of Wales Hospital	Dental Service	TB & Chest Service	Regional Offices	Other Hospitals	Other Clinics & Services	Total	Strength on 31.3.81
Mortuary Supervisor			1	1	1												3	6	6
Senior Optical Technician/ Optical Technician			1	2	1												5	5	4
*Photographer I/II			1									8					1	5	5
Senior Prosthetist/Prosthetist I/ Prosthetist II/Student Prosthetist				4	1	1					1						25	33	27
Scientific Officer (Medical)																	4	10	7
Clinical Psychologist																	2	10	6
Speech Therapist																	3	3	3
Steward I/II/III		1	4	5	5	6	2	3	2	2	1	1				4	10	46	34
Tailor																	4	4	4
Technical Assistant (Social Hygiene)																	1	1	1
Telephone Operator		1	8	8	7	7	4	5	4		4					5	9	63	49
*Training Officer													1					-	1
*Minor Staff		4	868	1291	875	167	104	460	538	67	140	655	76	34	4	337	1561	6526	6223
Total		384	2384	3587	2333	523	204	1168	1168	164	360	655	565	363	137	706	4482	19183	17513

Note : \* Excl. 160 supernumerary posts held against other posts.

TABLE 2  
ORGANISATION OF MEDICAL & HEALTH DEPARTMENT - POSITION AS AT 31.3.81

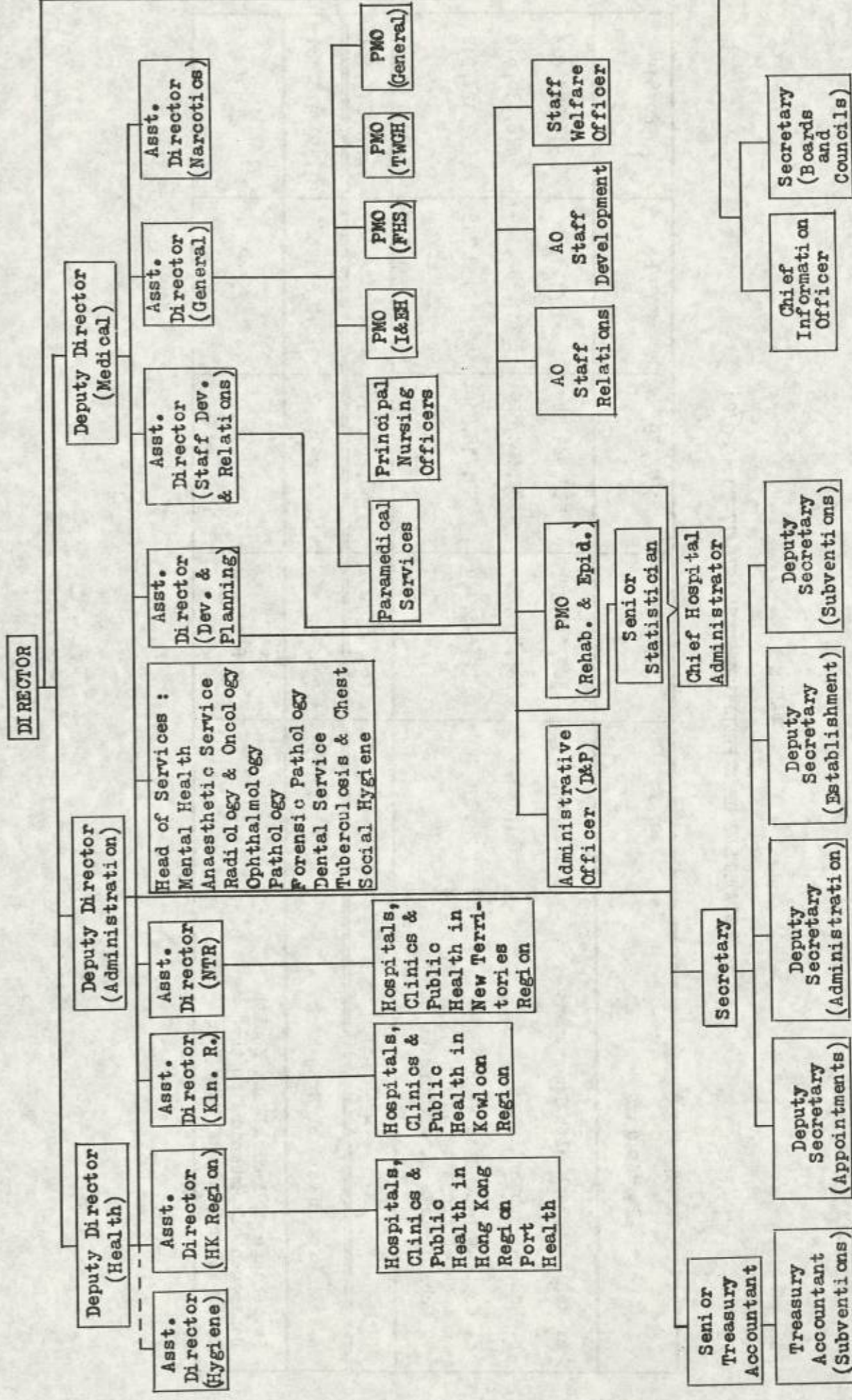


TABLE 3

STATEMENT OF EXPENDITURE FROM 1976/77 TO 1980/81

Particulars	1976/77 \$	1977/78 \$	1978/79 \$	1979/80 \$	1980/81 \$
a. Medical and Health Department	449,748,296	500,669,323	578,943,581	689,151,822	913,778,603
b. Medical Subventions	187,193,402	239,791,565	283,604,825	341,354,229	476,230,616
c. Capital expenditure on medical projects under Public Works Non-Recurrent	28,896,749	22,625,149	95,718,510	8,118,718	252,327,942
TOTAL :	665,838,447	763,086,037	958,266,916	1,038,624,769	1,642,337,161
Actual expenditure of Hong Kong	6,590,911,658	8,296,892,175	11,090,068,357	13,872,331,663	23,593,478,181
Percentage of Medical and Health Department Expenditure to the Total Expenditure of Hong Kong	10.10%	8.48%	8.64%	7.48%	6.96%

TABLE 4

## LEGISLATION OF MEDICAL AND HEALTH IMPORTANCE

April 1980 to March 1981

ORDINANCE

Coroners (Amendment) Ordinance 1980  
 Dangerous Drugs (Amendment) Ordinance 1980  
 Pharmacy and Poisons (Amendment) Ordinance 1980  
 Pneumoconiosis (Compensation) Ordinance 1980  
 Supplementary Medical Profession Ordinance 1980

RULES AND REGULATIONS

Dangerous Drugs Ordinance Chapter 134 :-

Dangerous Drugs (Amendment of First Schedule) Order 1980

Medical Clinics Ordinance Chapter 343 :-

Resolution - Powers of Registrar of Clinics exercisable  
 until 31 December, 1983

Pneumoconiosis (Compensation) Ordinance 1980, No.51 of 1980 :-

Pneumoconiosis (Compensation)  
 (Assessment of Levy) Regulations 1980

Pneumoconiosis (Compensation)  
 (Computation of Earnings) Regulations 1980

Coroners Ordinance, Chapter 14 :-

Places for Post-Mortem Examination (Amendment) Order 1981

TABLE 5  
WORK OF STATUTORY COUNCILS - APRIL 1980 TO MARCH 1981

Work	Council	Medical		Dental		Dental Hygienists
		Overseas List		Dentists Overseas List		
		Local List	Local List	Local List	Local List	
Number on the Register on 31.3.1981		3,181	532	652	136	34
Number of Applications for registration	Registration Provisional Registration	350 151	59	166	34	11
Number of Registrations	Registration Provisional Registration (Part IV of Register)	350 *66	59	70	34	11
Number of Examinations held	Multiple-Choice Question Paper Oral Oral & Practical Written	*1 *1 - *1	- - - -	- - 53 2	- - - -	- - - -
Number of Candidates examined	Multiple-Choice Question Paper Oral Oral & Practical Written	*498 *135 - *105	- - - -	- - 102 37	- - - -	- - - -
Number of successful Candidates	Multiple-Choice Question Paper Oral Oral & Practical Written	*82 *50 - *81	- - - -	- - 33 33	- - - -	- - - -
Disciplinary Hearings held	No. of hearings No. of persons charged	4 4	- -	3 3	- -	- -
Number of removals from Register		53	27	13	3	-

\* Licentiate Scheme for unregistrable doctors

Number of Meetings held : Medical Council - 1  
Dental Council - 0  
Licentiate Committee & its Sub-Committees - 15

Number of Meetings held : Medical Council - 1  
Dental Council - 0  
Licentiate Committee & its Sub-Committees - 15

TABLE 6  
WORK OF STATUTORY BOARDS - APRIL 1980 TO MARCH 1981

Board Work	Nursing					Midwives	Pharmacy & Poisons
	Registered			Enrolled			
	General	Mental	Mentally Sub-normal	General	Mental		
Number on the Register on 31.3.81	10,872	404	2	3,414	213	6,975	347
Number of applications for registration	673	40	-	209	43	268	94
Number of registrations granted	661	40	-	191	43	266	74
Number of examinations held	3	3	-	3	3	4	2
Number of candidates examined	617	38	-	172	47	244	115
Number of successful candidates	585	22	-	160	29	240	23
Disciplinary hearings held	-	-	-	-	-	-	-
No. of hearings	-	-	-	-	-	-	-
No. of persons charged	-	-	-	-	-	-	-
Number of removals from register	1	-	-	-	-	-	9

Number of Meetings held : Nursing Board - 3  
Midwives Board - 4  
Pharmacy and Poisons Board - 2  
Radiation Board - 1

DETAILS OF LICENCES ISSUED BY THE RADIATION BOARD  
1st April 1980 - 31st March 1981

	Irradiating Apparatus		Radioactive
	Possess & Operate	Possess	
Total no. of Licences remained in force as at 31.3.81	553	27	288
No. of Applications for Licences	64	-	71
No. of Licences granted	80	107	92
No. of Licences cancelled	49	80	42

Number of Meetings held : Radiation Board & its Sub-Committees - 4

TABLE 7  
ESTIMATED POPULATION BY AGE GROUP AT MID-1980

Age Group	Male	Female	Total
0	43,300	40,300	83,600
1 - 4	167,800	156,400	324,200
5 - 9	217,800	202,400	420,200
10 - 14	237,400	222,500	459,900
15 - 19	301,300	280,800	582,100
20 - 24	306,200	274,000	580,200
25 - 29	255,500	220,200	475,700
30 - 34	210,300	169,900	380,200
35 - 39	131,500	98,300	229,800
40 - 44	144,900	114,100	259,000
45 - 49	144,700	123,200	267,900
50 - 54	137,000	121,500	258,500
55 - 59	110,300	104,300	214,600
60 - 64	90,200	89,900	180,100
65 - 69	63,900	72,600	136,500
70 - 74	36,200	53,500	89,700
75 - 79	17,700	36,300	54,000
80 and over	10,500	31,800	42,300
<b>Total</b>	<b>2,626,500</b>	<b>2,412,000</b>	<b>5,038,500</b>

TABLE 8 VITAL STATISTICS - HONG KONG (Absolute Number)

Year	Population* (1)	Registered # Live Births (2)	Registered # Deaths (3)	Late Foetal Deaths (Still Births) (4)	Early Neo- Deaths (5)	Late Neo- Deaths (6)	Post Neo- Deaths (7)	Peri- Natal Deaths (8) = (4) + (5)	Neo. Natal Deaths (9) = (5) + (6)	Infant # Deaths (10) = (5) + (6) + (7)	Maternal Deaths (11)
1951	2,015,300	68,500	20,580	1,180	1,205	936	4,144	2,385	2,141	6,285	111
52	2,125,900	71,976	19,459	1,157	1,017	873	3,656	2,174	1,890	5,546	84
53	2,242,200	75,544	18,300	1,158	1,073	875	3,612	2,231	1,948	5,560	75
54	2,364,900	83,317	19,283	1,341	1,002	1,048	3,978	2,343	2,050	6,028	105
55	2,490,400	90,511	19,080	1,250	1,213	882	3,917	2,463	2,095	6,012	107
1956	2,614,600	96,746	19,295	988	1,303	1,039	3,553	2,291	2,342	5,895	88
57	2,736,300	97,834	19,365	1,245	1,323	1,007	3,106	2,568	2,330	5,436	105
58	2,854,100	106,624	20,554	1,297	1,413	1,079	3,294	2,710	2,492	5,786	92
59	2,967,400	104,579	20,250	1,393	1,335	888	2,831	2,728	2,223	5,054	77
60	3,075,300	110,667	19,146	1,680	1,309	1,003	2,279	2,989	2,312	4,591	55
1961	3,168,100	108,726(110,884)	18,738(19,325)	1,683	1,226	1,054	1,818	2,909	2,280	4,098	50
62	3,305,200	111,905(112,503)	20,324(20,933)	1,560	1,260	1,109	1,761	2,820	2,369	4,130	54
63	3,420,900	115,263(114,550)	19,748(20,340)	1,633	1,206	972	1,623	2,839	2,178	3,801	34
64	3,504,600	108,519(107,625)	18,113(18,657)	1,485	1,115	684	1,071	2,600	1,799	2,870	42
65	3,597,900	102,195(101,110)	17,621(18,150)	1,363	1,017	537	871	2,380	1,554	2,425	34
1966	3,629,900	92,476(91,832)	18,700(19,261)	1,246	1,011	407	882	2,257	1,418	2,300	40
67	3,722,800	88,171(88,215)	19,644(20,234)	999	958	440	862	1,957	1,398	2,260	27
68	3,802,700	82,992(82,685)	19,319(19,444)	832	843	404	664	1,675	1,247	1,911	12
69	3,863,900	79,329(82,482)	18,730(19,256)	757	810	373	548	1,567	1,183	1,731	12
70	3,959,000	77,465(79,132)	20,763(19,996)	726	734	252	535	1,460	986	1,521	15
1971	4,045,300	76,818(79,789)	20,253(20,374)	656	716	254	440	1,372	970	1,410	11
72	4,115,700	79,053(80,344)	21,145(21,397)	736	740	174	466	1,476	914	1,380	16
73	4,212,600	80,147(82,252)	21,360(21,251)	681	724	157	464	1,405	881	1,345	8
74	4,319,600	81,879(83,581)	22,050(21,879)	621	717	184	520	1,338	901	1,421	13
75	4,395,800	78,200(79,790)	21,191(21,597)	565	671	133	369	1,236	804	1,173	2
1976	4,443,800	76,342(78,486)	23,195(22,692)	521	564	127	401	1,085	691	1,092	14
77	4,509,800	78,807(79,888)	23,459(23,406)	528	565	140	388	1,093	705	1,093	13
78	4,597,000	79,173(80,785)	22,843(23,885)	431	539	115	280	970	654	934	5
79	4,878,600	82,157(83,019)	26,179(25,268)	389	566	123	403	955	689	1,092	7
80	5,038,500	85,406(86,518)	25,987(25,173)	483	531	134	343	1,014	665	1,008	4

\* 1951-1960 based on the 1961 Census, 1961-1970 based on the 1971 Census, 1971-1980 based on the 1981 Census.  
# Figures in brackets denote adjusted births & deaths for 1961-1968 and known births & deaths for 1969-1980.

TABLE 9 VITAL STATISTICS - HONG KONG (Rate)

Year	Crude* Birth Rate (1)	Crude* Death Rate (2)	Late Foetal Mort. (3)	Early Neo. Mort. (4)	Late Neo. Mort. (5)	Post Neo. Mort. (6)	Peri-Natal Mort. (7)	Neo-Natal Mort. (8)=(4)+(5)	Infant* Mort. (9)=(4)+(5)+(6)	Maternal Mort. (10)
1951	34.0	10.2	16.9	17.6	13.7	60.5	34.2	31.3	91.8	1.59
52	33.9	9.2	15.8	14.1	12.1	50.8	29.7	26.3	77.1	1.15
53	33.7	8.2	15.1	14.2	11.6	47.8	29.1	25.8	73.6	0.98
54	35.2	8.2	15.8	12.0	12.6	47.8	27.7	24.6	72.4	1.24
55	36.3	7.7	13.6	13.4	9.7	43.3	26.8	23.1	66.4	1.17
1956	37.0	7.4	10.1	13.5	10.7	36.7	23.4	24.2	60.9	0.90
57	35.8	7.1	12.6	13.5	10.3	31.8	25.9	23.8	55.6	1.06
58	37.4	7.2	12.0	13.3	10.1	30.9	25.1	23.4	54.3	0.85
59	35.2	6.8	13.1	12.8	8.5	27.1	25.7	21.3	48.3	0.73
60	36.0	6.2	15.0	11.8	9.1	20.6	26.6	20.9	41.5	0.49
1961	34.3 (35.0)	5.9 (6.1)	15.2	11.3	9.7	16.7	26.3	21.0	37.7	0.45
62	33.9 (34.0)	6.1 (6.3)	13.7	11.3	9.9	15.7	24.9	21.2	36.9	0.48
63	33.7 (33.5)	5.8 (6.0)	14.0	10.5	8.4	14.1	24.3	18.9	33.0	0.29
64	31.0 (30.7)	5.2 (5.3)	13.5	10.3	6.3	9.9	23.6	16.6	26.4	0.38
65	28.4 (28.1)	4.9 (5.0)	13.2	10.0	5.3	8.5	23.0	15.2	23.7	0.33
1966	25.5 (25.3)	5.2 (5.3)	13.3	10.9	4.4	9.5	24.1	15.3	24.9	0.43
67	23.7 (23.7)	5.3 (5.4)	11.2	10.9	5.0	9.8	21.9	15.9	25.6	0.30
68	21.8 (21.7)	5.1 (5.1)	9.9	10.2	4.9	8.0	20.0	15.0	23.0	0.14
69	20.5 (21.3)	4.8 (5.0)	9.5	10.2	4.7	6.9	19.6	14.9	21.8	0.15
70	19.6 (20.0)	5.2 (5.1)	9.3	9.5	3.3	6.9	18.7	12.7	19.6	0.19
1971	19.0 (19.7)	5.0 (5.0)	8.5	9.3	3.3	5.7	17.7	12.6	18.4 (17.7)	0.14
72	19.2 (19.5)	5.1 (5.2)	9.2	9.4	2.2	5.9	18.5	11.6	17.5 (17.4)	0.20
73	19.0 (19.5)	5.1 (5.0)	8.4	9.0	2.0	5.8	17.4	11.0	16.8 (16.4)	0.10
74	19.0 (19.3)	5.1 (5.1)	7.5	8.8	2.2	6.4	16.2	11.0	17.4 (16.8)	0.16
75	17.8 (18.2)	4.8 (4.9)	7.2	8.6	1.7	4.7	15.7	10.3	15.0 (14.9)	0.03
1976	17.2 (17.7)	5.2 (5.1)	6.8	7.4	1.7	5.3	14.1	9.1	14.3 (13.8)	0.18
77	17.5 (17.7)	5.2 (5.2)	6.7	7.2	1.8	4.9	13.8	8.9	13.9 (13.5)	0.16
78	17.2 (17.6)	5.0 (5.2)	5.4	6.8	1.5	3.5	12.2	8.3	11.8 (11.8)	0.06
79	16.8 (17.0)	5.4 (5.2)	4.7	6.9	1.5	4.9	11.6	8.4	13.3 (13.0)	0.08
80	17.0 (17.2)	5.2 (5.0)	5.6	6.2	1.6	4.0	11.8	7.8	11.8 (11.5)	0.05

(1) & (2) : per 1,000 population  
 ( Rates : (4), (5), (6), (8) & (9) : per 1,000 live births )  
 ( (3), (7) & (10) : per 1,000 total births )  
 \* Figures in brackets were calculated by using adjusted births & deaths figures for 1961-1968 and known births & deaths for 1969-1980.

TABLE 10 HONG KONG DEATH RATES 1966 TO 1980  
 (Deaths per 1,000 population)

Rate	Year	1966	1967	1968	1969	1970	1971	1972	1973	1974	1975	1976	1977	1978	1979	1980
Standardised * Death Rate		12.13	12.25	12.17	11.55	12.04	11.32	11.35	10.65	10.44	9.87	10.68	10.40	9.70	10.12	9.59
Crude Death Rate		5.15	5.28	5.08	4.85	5.24	5.01	5.14	5.07	5.10	4.82	5.22	5.20	4.97	5.37	5.16
Age Specific Death Rate	0	24.44	26.25	23.59	22.08	19.86	18.65	17.51	16.58	17.33	14.34	14.31	13.78	11.87	13.06	12.06
	1 - 4	2.29	2.93	1.21	0.94	1.18	0.95	0.95	1.07	1.10	0.77	0.84	0.78	0.62	1.01	0.69
	5 - 9	0.48	0.56	0.49	0.34	0.45	0.41	0.44	0.39	0.39	0.39	0.41	0.32	0.23	0.34	0.29
	10 - 14	0.53	0.51	0.45	0.32	0.42	0.36	0.35	0.38	0.36	0.28	0.32	0.33	0.27	0.30	0.29
	15 - 19	0.74	0.71	0.72	0.55	0.71	0.59	0.65	0.65	0.54	0.45	0.57	0.46	0.37	0.51	0.47
	20 - 24	1.09	0.95	0.92	0.83	1.06	0.87	0.99	0.98	0.95	0.74	0.80	0.73	0.61	0.87	0.81
	25 - 29	1.34	1.29	1.28	1.06	1.27	1.26	1.12	1.37	1.18	0.91	1.02	1.01	0.78	1.12	1.00
	30 - 34	1.75	1.68	1.60	1.41	1.75	1.54	1.49	1.66	1.73	1.24	1.60	1.17	1.11	1.30	1.25
	35 - 39	2.37	2.38	2.17	1.98	2.19	2.08	2.13	2.03	1.81	1.61	1.84	1.87	1.56	1.73	1.65
	40 - 44	3.71	3.69	3.58	3.11	3.51	3.28	3.22	3.20	3.08	2.89	2.88	2.80	2.23	2.73	2.39
	45 - 49	5.42	5.14	5.00	4.94	5.35	4.73	4.82	4.66	4.59	4.14	4.65	4.32	3.93	4.37	4.11
	50 - 54	8.76	8.76	8.33	8.15	8.14	8.07	7.42	7.90	7.35	6.83	7.12	6.48	6.66	6.65	6.23
	55 - 59	12.55	12.56	13.07	13.24	14.37	12.67	10.57	11.36	10.98	10.91	10.97	10.79	10.24	10.87	10.72
	60 - 64	21.08	20.27	21.42	19.51	20.45	19.40	19.99	19.71	18.70	17.15	18.10	17.94	15.83	16.59	15.32
	65 - 69	27.38	28.06	28.69	28.31	30.51	28.64	27.66	26.47	26.55	25.92	28.12	27.80	26.14	26.92	25.47
	70 - 74	45.65	43.02	42.56	37.73	42.82	41.67	41.75	38.69	38.69	36.41	39.99	38.18	37.54	38.06	36.01
	75 - 79	60.89	64.62	66.95	67.03	66.91	61.65	60.57	53.53	53.54	53.73	61.01	57.98	53.26	56.12	53.69
	80+	116.38	120.68	118.07	112.69	110.43	106.41	111.74	104.89	103.62	99.87	106.01	109.82	103.92	105.57	102.22

\* Based on population figures for England and Wales 1976  
 (Reference : United Nations Demographic Year-Book 1977)

TABLE 11 MAJOR CAUSES OF INFANT DEATHS 1961, 1970 AND 1976 TO 1980

Disease Group	Detailed List No. 9th Revision (1975)	1961*	1970#	1976#	1977#	1978#	1979	1980
Meningitis	320,322	26	36	17	18	15	15	8
Bronchitis	466,490-491	6	7	7	6	1	5	3
Pneumonia	480-486	1,166	326	137	114	103	137	110
Gastroenteritis, colitis & other diarrhoeal disease	558, 009	627	42	48	41	23	32	14
Congenital anomalies	740-759	157	239	289	328	306	277	249
Obstetric complications & birth trauma	761-763, 767	47	27	46	37	36	16	3
Haemolytic diseases of newborn	773	97	87	29	19	20	22	11
Hypoxia, birth asphyxia & other respiratory conditions	768-770	142	121	134	148	172	316	343
Immaturity	764-765	1,142	398	192	193	141	95	50
Other causes of perinatal mortality	760, 766, 771, 772, 774-779	107	36	92	73	71	77	110
Others	Residues of 001-999	581	202	101	116	46	100	107
All Causes	001-999	4,098	1,521	1,092	1,093	934	1,092	1,008
Total Registered Live-births		108,726	77,465	76,342	78,807	79,173	82,157	85,406

\* Data regrouped according to ICD 8th Revision (1965)  
# Data regrouped according to ICD 9th Revision (1975)

TABLE 12 MAJOR CAUSES OF MATERNAL DEATHS 1961, 1970 AND 1976 TO 1980

Detailed list no. according to 9th (1975) Revision	Pregnancy with abortive outcome other than spontaneous or legally induced	Toxaemia of pregnancy	Haemorrhage of pregnancy & childbirth	Major puerperal infection	Ectopic Pregnancy	Others	Total
Year	630-632 636-639	642, 643	640, 641 & 666	670	633		
1961*	4	10	17	2	3	14	50
1970#	1	3	2	-	5	4	15
1976#	2	3	5	-	1	3	14
1977#	3	1	6	-	1	2	13
1978#	-	1	1	-	-	3	5
1979	1	-	1	2	3	-	7
1980	-	3	1	-	-	-	4

\* Data regrouped according to ICD 8th Revision for the year 1961  
# Data regrouped according to ICD 9th Revision for the years 1970 & 1976 to 1978

TABLE 13

PROPORTIONATE MORTALITY BY DISEASE GROUP, 1961, 1970 AND 1976 TO 1980  
(As Percentage of Total Deaths)

Disease Group	Detailed List No. 9th Revision	1961 *	1970 #	1976 #	1977 #	1978 #	1979	1980
Infective and parasitic Neoplasms	001 - 139 140 - 239	16.2 12.3	7.9 19.1	3.3 23.2	3.2 24.1	2.8 26.2	3.2 23.7	3.1 24.8
Endocrine, nutritional, metabolic, immunity disorders and blood	240 - 289	0.9	1.5	1.7	1.6	1.5	1.6	1.5
Nervous system, sense organs and mental disorders	290 - 389	0.8 @	1.1	0.9	0.9	0.8	0.7	0.7
Circulatory system	390 - 459	18.2	25.1	28.9	28.7	31.1	29.3	28.9
Respiratory system	460 - 519	16.3	15.0	14.5	15.4	14.4	15.6	15.3
Digestive system	520 - 579	7.7	5.3	5.0	4.8	4.4	4.0	4.3
Genitourinary system	580 - 629	2.0	2.8	3.3	3.5	3.6	3.5	3.8
Pregnancy, childbirth and puerperium	630 - 676	0.3	0.1	0.1	0.1	0.0	0.0	0.0
Skin, subcutaneous tissue and musculo-skeletal system	680 - 739	0.2	0.2	0.4	0.3	0.3	0.2	0.2
Congenital anomalies and conditions originating in the perinatal period	740 - 779	8.8	4.8	3.7	3.7	3.5	3.2	3.1
Symptoms, signs and ill-defined conditions	780 - 799	10.4	8.8	6.9	6.2	6.3	7.1	6.3
Injury and poisoning	800 - 999	5.9	8.3	8.1	7.5	5.1	7.9	8.0

@ Excluding Cerebrovascular Disease (formerly Vascular Lesion Affecting Central Nervous System under the Nervous System and Sense Organs) : 7.5% in 1961

# Data regrouped according to I.C.D. 9th Revision (1975)

\* Data regrouped according to I.C.D. 8th Revision (1965)

TABLE 14 THE TEN LEADING CAUSES OF DEATH BY AGE AND SEX 1980

Rank	Cause of Death	Detailed List No. 9th Revision	Sex	Age Group									
				All Ages	0	1-4	5-14	15-44	45-64	65+	Unknown		
	All cause	001-999	M F X T	14,522 11,447 18 25,987	566 442 - 1,008	118 106 - 224	177 77 - 254	1,863 828 - 2,691	5,216 2,556 - 7,772	6,505 7,424 - 13,929	77 14 18 109		
1	Malignant neoplasms	140-208	M F T	4,001 2,429 6,430	3 1 4	8 13 21	25 17 42	433 225 658	2,024 948 2,972	1,508 1,225 2,733	- - -		
2	Heart diseases, including hypertensive heart disease	390-429	M F T	2,090 1,882 3,972	- 1 1	3 1 4	4 4 8	92 62 154	708 392 1,100	1,283 1,422 2,705	- - -		
3	Cerebrovascular disease	430-438	M F T	1,656 1,765 3,421	- 3 3	3 - 3	3 2 5	55 44 99	621 384 1,005	970 1,332 2,302	4 - 4		
4	Pneumonia, all forms	480-486	M F T	1,128 1,149 2,277	67 43 110	19 17 36	14 8 22	72 40 112	271 101 372	685 940 1,625	- - -		
5	Injury and poisoning	800-999	M F X T	1,377 700 1 2,078	22 16 - 38	42 33 - 75	86 21 - 107	712 234 - 946	342 176 - 518	164 220 - 384	9 - 1 10		
6	Nephritis, nephrotic syndrome and nephrosis	580-589	M F T	399 422 821	1 - 1	1 - 1	3 4 7	52 46 98	132 125 257	210 247 457	- - -		

TABLE 14 THE TEN LEADING CAUSES OF DEATH BY AGE AND SEX 1980 (Cont'd.)

Rank	Cause of Death	Detailed List No. 9th Revision	Sex	Age Group							
				All Ages	0	1-4	5-14	15-44	45-64	65+	Unknown
7	Bronchitis, chronic and unspecified, emphysema and asthma	490-493	M	435	1	-	1	14	159	260	-
			F	276	-	-	2	9	50	215	-
			T	711	1	-	3	23	209	475	-
8	Tuberculosis (including late effects of tuberculosis)	010-018, 137	M	438	1	-	3	40	185	209	-
			F	113	-	-	-	16	27	67	-
			T	551	1	3	3	56	212	276	-
9	Certain conditions originating in the perinatal period	760-779	M	301	301	-	-	-	-	-	-
			F	216	216	-	-	-	-	-	-
			T	517	517	-	-	-	-	-	-
10	Chronic liver diseases and cirrhosis	571	M	297	-	-	1	33	181	82	-
			F	92	-	-	-	4	38	50	-
			T	389	-	-	1	37	219	132	-
	Diabetes mellitus	250	M	115	-	-	-	4	56	55	-
			F	196	-	-	-	6	56	133	1
			T	311	-	-	-	10	112	188	1
	Congenital anomalies	740-759	M	144	126	8	4	5	1	-	-
			F	149	123	16	4	3	3	-	-
			T	293	249	24	8	8	4	-	-
	All other causes	Residue of 000-999	M	2,141	44	34	33	351	536	1,079	64
			F	2,058	39	23	15	139	256	1,573	13
			X	17	-	-	-	-	-	-	17
			T	4,216	83	57	48	490	792	2,652	94

TABLE 14(a) SUPPLEMENTARY CLASSIFICATION OF EXTERNAL CAUSES OF INJURY AND POISONING 1980

External Cause of Death	Detailed List No. 9th Rev.	Sex	Age Group							
			All Ages	0	1-4	5-14	15-44	45-64	65+	Unknown
All accidents, poisonings and violence	E800-E999	M	1,385	22	42	86	715	344	167	9
		F	711	16	33	21	237	180	224	-
		X	1	-	-	-	-	-	-	1
		T	2,097	38	75	107	952	524	391	10
Transport accidents	E800-E848	M	342	1	3	30	158	89	61	-
		F	165	-	9	8	28	49	71	-
		T	507	1	12	38	186	138	132	-
Accidental poisonings	E850-E869	M	26	-	2	-	16	8	-	-
		F	17	-	-	-	11	4	2	-
		T	43	-	2	-	27	12	2	-
Other accidents, misadventures & adverse effect	E870-E949	M	511	20	34	51	284	89	28	5
		F	179	14	24	9	62	27	43	-
		X	1	-	-	-	-	-	-	1
		T	691	34	58	60	346	116	71	6
Suicide and self-inflicted injury	E950-E959	M	390	-	-	-	186	135	67	2
		F	294	-	-	2	116	77	99	-
		T	684	-	-	2	302	212	166	2
Homicide and injury purposely inflicted by other persons	E960-E969	M	65	1	3	5	38	13	5	-
		F	18	2	-	1	7	6	2	-
		T	83	3	3	6	45	19	7	-
Other violence	E970-E999	M	51	-	-	-	33	10	6	2
		F	38	-	-	1	13	17	7	-
		T	89	-	-	1	46	27	13	2

TABLE 15 LEADING CAUSES OF DEATH 1961, 1970 AND 1980 (RANKING ACCORDING TO 1961)

Causes of Death	Number of Deaths			Percentage of Deaths from all Causes			Rate per 100,000 population		
	1961	1970	1980	1961	1970	1980	1961	1970	1980
<u>All ages</u>									
All causes	18,738	20,763	25,987	100.0	100.0	100.0	591.5	524.5	515.8
1. Pneumonia, all forms	2,665	1,985	2,277	14.2	9.6	8.8	84.1	50.1	45.2
2. Malignant neoplasms	2,280	3,964	6,430	12.2	19.1	24.7	72.0	100.1	127.6
3. Tuberculosis, all forms	1,907	1,436	551	10.2	6.9	2.1	60.2	36.3	10.9
4. Heart diseases, including hypertensive diseases	1,866	3,121	3,972	9.9	15.0	15.3	58.9	78.8	78.8
5. Cerebrovascular diseases	1,401	1,806	3,421	7.5	8.7	13.2	44.2	45.6	67.9
All other causes	8,619	8,451	9,336	46.0	40.7	35.9	272.1	213.5	185.3

TABLE 15 (Cont'd)

Causes of Death	Number of Deaths			Percentage of Deaths from all Causes			Rate per 100,000 population		
	1961	1970	1980	1961	1970	1980	1961	1970	1980
<u>0 Years</u>									
All causes	4,098	1,521	1,008	100.0	100.0	100.0	3,840.7	1,985.6	1,205.7
1. Pneumonia, all forms	1,166	326	110	28.4	21.4	10.9	1,092.8	425.6	131.6
2. Immaturity, unqualified	1,142	398	50	27.9	26.2	5.0	1,070.3	519.6	59.8
3. Gastroenteritis, colitis and other diarrhoeal diseases	627	42	14	15.3	2.8	1.4	587.6	54.8	16.7
4. Congenital anomalies	157	239	249	3.8	15.7	24.7	147.1	312.0	297.8
5. Anoxic and hypoxic conditions not elsewhere classified	142	121	343	3.5	8.0	34.0	133.1	158.0	410.3
All other causes	864	395	242	21.1	25.9	24.0	809.8	515.7	289.5
<u>1 - 4 Years</u>									
All causes	1,805	407	224	100.0	100.0	100.0	427.5	118.0	69.1
1. Pneumonia, all forms	603	106	36	33.4	26.0	16.1	142.8	30.7	11.1
2. Measles	342	7	3	19.0	1.7	1.3	81.0	2.0	0.9
3. Gastroenteritis, colitis and other diarrhoeal diseases	201	11	3	11.1	2.7	1.3	47.6	3.2	0.9
4. Tuberculosis, all forms	169	9	3	9.4	2.2	1.3	40.0	2.6	0.9
5. Injury and Poisoning	107	113	75	5.9	27.8	33.5	25.3	32.8	23.1
All other causes	383	161	104	21.2	39.6	46.5	90.7	46.7	32.1

TABLE 15 (Cont'd)

Causes of Death	Number of Deaths			Percentage of Deaths from all Causes			Rate per 100,000 population		
	1961	1970	1980	1961	1970	1980	1961	1970	1980
	<u>5 - 14 years</u> All causes	587	453	254	100.0	100.0	100.0	77.7	43.2
1. Injury and poisoning	177	203	107	30.2	44.8	42.1	23.4	19.4	12.2
2. Pneumonia, all forms	83	42	22	14.1	9.3	8.7	11.0	4.0	2.5
3. Tuberculosis, all forms	60	5	3	10.2	1.1	1.2	7.9	0.5	0.3
4. Malignant neoplasms	40	57	42	6.8	12.6	16.5	5.3	5.4	4.8
5. Heart diseases, including hypertensive diseases	33	23	8	5.6	5.1	3.1	4.4	2.2	0.9
All other causes	194	123	72	33.1	27.1	28.4	25.7	11.7	8.2
<u>15 - 44 years</u> All causes	2,665	2,699	2,691	100.0	100.0	100.0	201.6	163.6	107.3
1. Tuberculosis, all forms	553	213	56	20.8	7.9	2.1	41.9	12.9	2.2
2. Malignant neoplasms	512	666	658	19.2	24.7	24.5	38.7	40.4	26.2
3. Injury and poisoning	465	713	946	17.4	26.4	35.2	35.2	43.2	37.7
4. Heart diseases, including hypertensive diseases	246	214	154	9.2	7.9	5.7	18.6	13.0	6.1
5. Pneumonia	100	135	112	3.8	5.0	4.2	7.6	8.2	4.5
All other causes	789	758	765	29.6	28.1	28.3	59.7	45.9	30.5

TABLE 15 (Cont'd)

Causes of Death	Number of Deaths			Percentage of Deaths from all Causes			Rate per 100,000 population		
	1961	1970	1980	1961	1970	1980	1961	1970	1980
	<u>45 - 64 years</u> All causes	5,041	7,127	7,772	100.0	100.0	100.0	1,089.9	1,066.8
1. Malignant neoplasms	1,204	2,048	2,972	23.9	28.7	38.2	260.3	306.5	322.7
2. Tuberculosis, all forms	779	753	212	15.5	10.6	2.7	168.4	112.7	23.0
3. Heart diseases including hypertensive diseases	762	1,141	1,100	15.1	16.0	14.2	164.8	170.8	119.4
4. Cerebrovascular diseases	569	637	1,005	11.3	8.9	12.9	123.0	95.3	109.1
5. Pneumonia, all forms	278	485	372	5.5	6.8	4.8	60.1	72.6	40.4
All other causes	1,449	2,063	2,111	28.7	29.0	27.2	313.3	308.8	229.2
<u>65 years and over</u> All causes	4,524	8,543	13,929	100.0	100.0	100.0	4,519.5	4,975.5	4,319.1
1. Heart diseases, including hypertensive diseases	817	1,732	2,705	18.1	20.3	19.4	816.2	1,008.7	838.8
2. Cerebrovascular diseases	747	1,055	2,302	16.5	12.3	16.5	746.2	614.4	713.8
3. Malignant neoplasms	503	1,162	2,733	11.1	13.6	19.6	502.5	676.8	847.4
4. Pneumonia, all forms	435	889	1,625	9.6	10.4	11.7	434.6	517.8	503.9
5. Tuberculosis, all forms	296	456	276	6.5	5.3	2.0	295.7	265.6	85.6
All other causes	1,726	3,249	4,288	38.2	38.1	30.8	1,724.3	1,892.3	1,329.6

TABLE 16 NUMBER OF CANCER DEATHS BY AGE AND SEX 1980

T-List	Detailed List Number 9th Revision	Cause Group	Sex	All Ages	0-9	10-	20-	30-	35-	40-	45-	50-	55-	60-	65-	70-	75+
T080(a)	147	Malignant neoplasm of nasopharynx	M F	349 118	- -	2 2	10 2	19 5	30 6	26 17	58 19	57 19	63 9	44 11	17 16	16 4	7 8
T080(b)	140-146 148-149	Malignant neoplasm of lip, oral cavity and pharynx, excluding nasopharynx	M F	74 27	- -	- -	- -	- -	1 1	1 1	6 3	10 2	9 5	11 4	20 6	8 2	8 3
T090	150	Malignant neoplasm of oesophagus	M F	287 61	- -	- -	- -	1 1	3 -	6 -	21 1	34 3	51 5	62 11	54 11	35 13	21 22
T091	151	Malignant neoplasm of stomach	M F	295 167	- -	- -	4 1	5 2	3 3	12 12	10 7	27 12	43 22	35 13	71 25	38 31	47 39
T092-T093	152-153	Malignant neoplasm of intestine except rectum	M F	154 164	- -	1 -	1 3	3 2	- 3	5 4	8 4	13 14	27 21	20 16	23 22	22 27	31 48
T094	154	Malignant neoplasm of rectum, rectosigmoid junction and anus	M F	103 93	- -	1 -	5 3	4 2	2 2	4 1	5 5	7 6	15 9	15 13	15 17	11 13	19 22
T100	161	Malignant neoplasm of larynx	M F	77 12	- -	1 -	- -	- -	- -	- 1	3 -	13 -	17 2	14 2	12 2	7 3	10 2
T101	162	Malignant neoplasm of trachea, bronchus and lung	M F	1223 583	- -	1 -	6 4	3 2	5 3	34 14	64 14	123 40	206 79	227 75	245 97	175 94	134 161
T102	170	Malignant neoplasm of bone and articular cartilage	M F	21 10	- -	3 2	2 1	- -	1 1	- 1	1 -	2 1	3 1	2 1	4 -	1 1	2 1
T112-T113	172-173	Malignant neoplasm of skin	M F	10 10	- -	- -	- -	1 -	- -	1 -	1 -	2 -	- 3	- -	1 1	2 1	2 5

TABLE 16 NUMBER OF CANCER DEATHS BY AGE AND SEX 1980 (CONT'D)

T-List	Detailed List Number 9th Revision	Cause Group	Sex	All Ages	0-9	10-	20-	30-	35-	40-	45-	50-	55-	60-	65-	70-	75+
T114-T115	174-175	Malignant neoplasm of breast	M F	1 190	- -	- -	- -	- -	8 -	12 8	21 6	23 26	24 26	36 17	28 18	14 17	24 16
T120	180	Malignant neoplasm of cervix uteri	F	141	-	-	2	1	4	8	6	26	26	17	18	17	16
T121-T122	179 181-182	Malignant neoplasm of uterus, other and unspecified	F	38	-	-	-	2	-	1	2	7	6	6	3	3	8
T124	185	Malignant neoplasm of prostate	M	35	-	-	-	-	1	-	-	1	2	7	3	6	15
T095	155	Malignant neoplasm of liver and intrahepatic bile ducts	M F	689 204	2 1	4 1	7 4	19 2	32 3	44 8	79 18	99 15	109 25	102 23	102 23	50 29	40 52
T142	156-160, 163-165, 171, 183, 184, 186-199 204-208	Malignant neoplasm of other and unspecified sites  Leukaemia	M F	496 471	10 11	14 2	13 13	11 8	9 5	18 8	37 24	52 39	70 55	67 67	88 66	48 69	59 104
T140-T141	200-203	Other malignant neoplasm of lymphatic and haematopoietic tissue	M F	91 75	7 7	14 12	14 4	5 3	2 2	6 4	7 3	7 4	5 7	7 2	8 11	2 4	7 12
T080-T142	140-208	All forms of malignant neoplasm	M F	4001 2429	22 22	45 22	71 41	76 36	92 41	163 94	310 128	458 215	631 305	625 300	676 354	424 331	408 540

TABLE 17 MAIN CAUSES OF DEATH FROM CANCER IN HONG KONG 1971 TO 1980

CAUSE OF DEATH Detailed List Number 9th Revision	Sex	1971 #		1972 #		1973 #		1974 #		1975 #		1976 #		1977 #		1978 #		1979		1980		
		D	R	D	R	D	R	D	R	D	R	D	R	D	R	D	R	D	R	D	R	
ALL FORMS OF CANCER (140 - 208)	M	2469	120.02555	122.02686	125.22788	126.83022	134.63188	140.23396	147.23597	152.93774	149.64001	152.3										
	F	1768	88.91820	90.11853	89.71895	89.32083	96.92180	100.52256	102.42381	106.12429	103.12429	100.7										
Malignant neoplasm of nasopharynx (147)	M	252	12.2	276	13.2	318	14.8	304	13.8	339	15.1	334	14.7	325	14.1	302	12.8	360	14.3	349	13.3	
	F	94	4.7	114	5.6	110	5.3	132	6.2	120	5.6	102	4.7	110	5.0	120	5.3	126	5.3	118	4.9	
Malignant neoplasm of oesophagus (150)	M	150	7.3	158	7.5	179	8.3	189	8.6	182	8.1	222	9.8	200	8.7	227	9.6	264	10.5	287	10.9	
	F	69	3.5	76	3.8	53	2.6	45	2.1	63	2.9	75	3.5	67	3.0	64	2.9	66	2.8	61	2.5	
Malignant neoplasm of stomach (151)	M	233	11.3	231	11.0	231	10.8	256	11.6	248	11.0	279	12.3	281	12.2	274	11.6	286	11.3	295	11.2	
	F	145	7.3	173	8.6	170	8.2	162	7.6	158	7.3	156	7.2	161	7.3	177	7.9	167	7.1	167	6.9	
Malignant neoplasm of intestine except rectum (152 & 153)	M	95	4.6	106	5.1	108	5.0	126	5.7	123	5.5	134	5.9	139	6.0	154	6.5	142	5.6	154	5.9	
	F	102	5.1	115	5.7	120	5.8	126	5.9	129	6.0	140	6.5	117	5.3	145	6.5	158	6.7	164	6.8	
Malignant neoplasm of liver and intrahepatic bile ducts (155)	M	573	27.9	591	28.2	566	26.4	570	25.9	606	27.0	508	22.3	380	16.5	650	27.6	691	27.4	689	26.2	
	F	156	7.8	144	7.1	171	8.3	165	7.8	169	7.9	150	6.9	125	5.7	195	8.7	178	7.6	204	8.5	
Malignant neoplasm of trachea, bronchus and lung (162)	M	534	26.0	582	27.8	634	29.5	676	30.7	758	33.8	803	35.3	919	39.8	999	42.5	1062	42.1	1223	46.6	
	F	375	18.9	367	18.2	394	19.1	397	18.7	474	22.0	532	24.5	529	24.0	562	25.0	600	25.5	583	24.2	
Malignant neoplasm of breast (174 & 15)	M	1	*	3	0.1	3	0.1	1	*	1	*	3	0.1	2	0.1	-	-	1	*	1	*	
	F	170	8.6	175	8.7	189	9.1	169	8.0	193	9.0	193	8.9	195	8.9	210	9.4	205	8.7	190	7.9	
Malignant neoplasm of cervix uteri (180)	F	157	7.9	159	7.9	153	7.4	153	7.2	145	6.7	141	6.5	180	8.2	124	5.5	146	6.2	141	5.8	

# Data regrouped according to ICD 9th Revision (1975). Mortality Rate per 100,000 population.  
\* Denote less than 0.05.

TABLE 18 NEW CASES OF CANCER NOTIFIED TO THE CANCER REGISTRY BY AGE AND SEX 1978

A-List	Detailed List Number 8th Revision	Cause Group	Sex	All Ages	0-9	10-	20-	30-	35-	40-	45-	50-	55-	60-	65-	70-	75+	Unk.
A45(a)	147	Malignant Neoplasm of Nasopharynx	M F	900 362	- 1	15 5	48 30	51 29	102 29	115 47	156 44	130 56	105 39	83 39	47 17	24 10	17 16	7 -
A45(b)	140-146 148-149	Malignant Neoplasm of Buccal Cavity and Pharynx, excluding Nasopharynx	M F	199 93	3 -	1 2	4 5	1 1	4 -	10 8	21 7	38 10	28 9	22 15	29 10	24 13	10 13	4 -
A46	150	Malignant Neoplasm of Oesophagus	M F	415 104	- -	1 1	4 -	1 -	7 1	13 3	21 5	82 10	70 10	66 18	67 16	38 20	39 17	6 3
A47	151	Malignant Neoplasm of Stomach	M F	467 300	- -	2 1	6 17	12 5	10 6	20 17	25 10	48 17	75 34	84 41	78 44	58 38	46 67	3 3
A48	152, 153	Malignant Neoplasm of Intestine, except Rectum	M F	370 324	- -	- 1	9 7	8 5	10 2	17 16	31 21	47 27	50 46	50 46	58 42	42 37	47 72	1 2
A49	154	Malignant Neoplasm of Rectum and Rectosigmoid Junction	M F	289 213	- -	- 1	6 8	18 2	15 4	22 9	20 13	32 23	35 18	40 25	46 30	25 28	29 49	1 3
A50	161	Malignant Neoplasm of Larynx	M F	232 33	- -	1 -	- 2	2 -	2 -	6 1	21 3	42 3	38 6	40 5	50 8	15 1	11 3	4 1
A51	162	Malignant Neoplasm of Trachea, Bronchus and Lung	M F	1187 649	1 1	- 2	11 5	5 5	15 2	36 18	65 48	166 48	178 83	262 91	220 103	132 106	90 136	6 1
A52	170	Malignant Neoplasm of Bone	M F	51 48	2 1	10 9	9 2	2 1	1 1	2 1	4 2	4 8	3 3	7 6	2 5	2 6	3 3	- -

TABLE 18 NEW CASES OF CANCER NOTIFIED TO THE CANCER REGISTRY BY AGE AND SEX 1978 (CONT'D)

A-List	Detailed List Number 8th Revision	Cause Group	Sex	All Ages	0-9	10-	20-	30-	35-	40-	45-	50-	55-	60-	65-	70-	75+	Unk.
A53	172, 173	Malignant Neoplasm of Skin	M F	150 134	2	1 4	9 7	3 6	6 2	10 7	10 8	7 8	21 18	22 14	19 11	12 15	20 28	8 6
A54	174	Malignant Neoplasm of Breast	M F	4 716	-	-	1 13	-	38	50	86	93	-	2 84	-	1 64	-	5
A55	180	Malignant Neoplasm of Cervix Uteri	F	633	1	1	27	32	35	48	71	106	85	90	67	30	35	5
A56	181, 182	Other Malignant Neoplasm of Uterus	F	161	-	-	6	1	4	5	17	24	22	27	24	22	8	1
A57	185	Malignant Neoplasm of Prostate	M	149	-	-	-	1	-	2	3	4	15	14	33	26	49	2
A58(a)	155	Malignant Neoplasm of Liver and Intrahepatic Bile Ducts, Specified as Primary	M F	784 219	4 2	5 2	16 7	20 2	39 3	49 6	90 13	137 25	108 20	111 30	90 34	54 23	57 48	4 4
A58(b)	156-160, 163, 171, 183, 184, 186-199	Malignant Neoplasm of Other and Unspecified Sites	M F	1242 1141	39 17	26 29	36 68	27 37	27 30	53 62	79 70	144 108	162 120	190 128	174 159	135 120	137 183	13 10
A59	204-207	Leukaemia	M F	152 131	42 31	28 37	16 16	7 2	13 3	7 3	6 8	5 6	9 3	10 3	3 4	1 7	5 8	-
A60	200-203, 208-209	Other Neoplasm of Lymphatic and Haematopoietic Tissue	M F	243 143	8 6	25 10	25 10	15 3	18 12	13 2	18 13	26 12	29 21	27 16	12 13	15 11	9 13	3 1
A45-A60	140-209	All forms of Cancer	M F	5834 5404	101 60	115 105	200 230	173 149	269 172	375 303	570 439	912 584	926 617	1030 678	928 709	604 551	569 762	62 45

TABLE 19 NEW OVERSEAS CASES OF CANCER DIAGNOSED IN HONG KONG 1978

A-List	Detailed List Number 8th Revision	Cause Group	Sex	All Ages	0-9	10-	20-	30-	35-	40-	45-	50-	55-	60-	65-	70-	75+
A45(a)	147	Malignant Neoplasm of Nasopharynx	M F	18 5	-	-	1	4	2	3	2	1	3	1	2	-	-
A49	154	Malignant Neoplasm of Rectum and Rectosigmoid Junction	M F	2 -	-	-	-	-	-	-	-	1	-	-	-	1	-
A50	161	Malignant Neoplasm of Larynx	M F	1 -	-	-	-	-	-	-	-	-	-	-	-	1	-
A51	162	Malignant Neoplasm of Trachea, Bronchus and Lung	M F	2 2	-	-	-	-	-	-	1	1	-	1	-	-	-
A54	174	Malignant Neoplasm of Breast	M F	6 -	-	-	-	-	1	-	-	1	3	-	1	-	-
A55	180	Malignant Neoplasm of Cervix Uteri	F	3	-	-	1	-	-	-	-	2	-	-	-	-	-
A58(a)	155	Malignant Neoplasm of Liver and Intrahepatic Bile Ducts, Specified as Primary	M F	1 -	-	-	-	-	-	1	-	-	-	-	-	-	-
A58(b)	156-160, 163, 171, 183, 184, 186-199	Malignant Neoplasm of Other and Unspecified Sites	M F	4 1	-	-	1	-	-	-	-	-	1	-	1	-	-
A45-A60	140-209	All forms of Cancer	M F	27 18	-	-	1 2	4 -	2 1	3 4	3 5	3 4	4 -	2 -	3 2	2 -	-

TABLE 20 DEATHS FROM HEART DISEASES BY AGE AND SEX 1980  
(including Hypertensive Disease)

T-List No.	Cause (with detailed list no.)	Sex	All Ages	Age Group														
				0	10-	20-	30-	35-	40-	45-	50-	55-	60-	65-	70-	75+		
T250	ACUTE RHEUMATIC FEVER (390-392)	M	1	-	-	-	-	-	-	-	-	-	-	-	-	-	-	-
		F	1	-	1	-	-	-	-	-	-	-	-	-	-	-	-	-
T251	CHRONIC RHEUMATIC HEART DISEASES (393-398) Diseases of mitral valve (394)	M	88	-	5	4	2	3	14	14	17	13	10	5	9	11	10	9
		F	133	-	9	7	4	5	8	7	21	15	17	17	11	12	11	11
T260	HYPERTENSIVE HEART DISEASES (402, 404)	M	310	-	-	1	2	3	14	14	25	50	69	55	73	50	69	73
		F	306	-	-	-	1	5	4	5	13	29	37	58	135	29	37	58
T261	OTHER HYPERTENSIVE DISEASES (401, 403, 405)	M	19	-	-	-	-	-	2	2	2	1	1	3	1	1	1	9
		F	23	-	-	-	-	-	1	1	1	1	2	2	15	1	2	15
T270	ACUTE MYOCARDIAL INFARCTION (410)	M	492	1	-	-	3	5	12	19	22	80	110	80	110	80	110	110
		F	373	-	-	1	2	-	-	3	11	21	58	75	163	39	58	75
T271	OTHER ISCHAEMIC HEART DISEASES (411-414)	M	613	-	5	1	4	5	18	18	32	66	115	117	188	66	115	188
		F	568	-	-	1	-	4	4	8	11	40	72	84	320	40	72	84
T280	DISEASES OF PULMONARY CIRCULATION (415-417)	M	469	1	4	1	3	8	18	18	39	43	90	87	97	77	90	97
		F	335	1	1	3	4	-	4	4	7	19	65	62	134	35	65	62
T281	OTHER FORMS OF HEART DISEASES (420-429)	M	98	2	7	6	2	2	4	4	4	1	9	24	4	9	9	24
		F	143	3	4	2	3	1	1	-	-	4	15	20	69	15	11	20

TABLE 21

INFECTIOUS DISEASES NOTIFIED 1976 - 1980

Disease	Cases					Deaths				
	1976	1977	1978	1979	1980	1976	1977	1978	1979	1980
Amoebiasis	33	26	12	46	39	3	5	2	1	6
Bacillary Dysentery	356	322	406	429	437	3	1	2	3	1
Cerebrospinal Meningitis & Meningococcal Infections	9	10	4	33	29	3	-	-	7	3
Chickenpox	1743	899	912	1052	2176	3	1	-	1	1
Cholera	1*	-	2	4	-	-	-	-	1	-
Diphtheria	1	1	-	-	2	1	-	-	-	-
Enteric Fever : Typhoid	465	365	330	331	468	4	2	2	3	6
Paratyphoid	35	24	39	26	32	-	-	-	-	-
Food Poisoning: Outbreaks	112	213	204	146	102	-	-	-	-	-
(Persons affected)	(423)	(555)	(543)	(587)	(754)	-	-	-	-	-
Leprosy	76	73	74	70	60	2	-	1	1	-
Malaria	39	40	47	40	49	-	-	-	1	1
Measles	1463	1537	240	1929	1669	10	12	1	32	5
Ophthalmia Neonatorum	10	5	4	3	1	-	-	-	-	-
Poliomyelitis	-	-	-	2	2	-	-	-	2	-
Puerperal Fever	-	-	-	-	-	-	-	-	-	-
Rabies (Human)	-	1*	-	-	2	-	1*	-	-	2
Scarlet Fever	124	28	13	12	18	-	-	-	-	-
Tuberculosis	7928	7191	6623	7907	8065	568	532	420	523	551
Typhus (Scrub)	2	1*	-	3	5	-	-	-	-	-
Viral Hepatitis	969	1008	1230	964	1554	45	42	47	44	38
Whooping Cough	2	1	-	-	12	-	-	-	-	-
Total	13368	11745	10140	12997	14724	642	596	475	619	615

Remarks : \* Imported cases  
No case of smallpox, plague, epidemic louse-borne typhus, yellow fever or relapsing fever was reported during the specified years.

TABLE 22

INCIDENCE AND DEATH RATES OF CERTAIN INFECTIOUS DISEASES 1976 TO 1980

Diseases	Incidence Rate # (per 100,000 population)					Death Rate (per million population) #				
	1976	1977	1978	1979	1980	1976	1977	1978	1979	1980
Amoebiasis	0.74	0.58	0.26	0.94	0.77	0.68	1.11	0.44	0.20	1.19
Bacillary Dysentery	8.01	7.14	8.83	8.79	8.67	0.68	0.22	0.44	0.61	0.20
Cerebrospinal Meningitis & Meningococcal Infections	0.20	0.22	0.09	0.68	0.58	0.68	-	-	1.43	0.60
Diphtheria	0.02	0.02	-	-	0.04	0.23	-	-	-	-
Enteric Fever (Typhoid & Paratyphoid)	11.25	8.63	8.03	7.32	9.92	0.90	0.44	0.44	0.61	1.19
Measles	32.92	34.08	5.22	39.54	33.12	2.25	2.66	0.22	6.56	0.99
Tuberculosis	178.41	159.45	144.07	162.08	160.07	127.82	117.97	91.36	107.20	109.36
Viral Hepatitis	21.81	22.35	26.76	19.76	30.84	10.13	9.31	10.22	9.02	7.54

# Adjusted according to revised population figures based on the 1981 Census.

TABLE 23

PRINCIPAL INFECTIOUS DISEASES NOTIFIED BY AGE AND SEX 1980

Age Group	Tuberculosis		Viral Hepatitis		Enteric Fever		Bacillary Dysentery	
	M	F	M	F	M	F	M	F
0 - 4	38	35	23	21	11	10	69	49
5 - 9	36	22	61	84	23	15	39	26
10 - 14	32	64	78	71	39	23	14	17
15 - 19	431	349	149	74	49	45	13	15
20 - 24	786	531	238	103	58	58	18	17
25 - 29	606	345	155	65	28	27	11	12
30 - 34	402	185	118	33	22	10	11	10
35 - 39	301	105	45	10	6	8	4	7
40 - 44	329	95	46	12	9	4	7	8
45 - 49	429	116	32	12	7	4	6	9
50 - 54	530	114	31	13	4	3	3	4
55 - 59	480	114	22	7	1	7	6	9
60 - 64	457	131	10	5	4	4	4	11
65 - 69	369	101	6	7	2	2	8	8
70 - 74	177	75	5	3	-	6	3	3
75 & over	157	114	2	2	1	5	6	10
Unknown	1	1	2	1	-	-	-	-
Total	5561	2497	1023	523	264	231	222	215
	8065(7)		1554(8)		500(5)		437	

Note : Figures in brackets denote unknown sex included.

TABLE 24  
MALARIA 1976 TO 1980

Cases Notified

Year	Imported	Local			Total Cases
		Indigenous	Induced	Cryptic	
1976	37	-	1*	1	39
1977	38	1	1*	-	40
1978	44	-	3@	-	47
1979	39	-	1#	-	40
1980	45	3	1#	-	49

\* Blood transfusion case

@ Including 2 blood-transfusion cases and one congenital case

# Congenital case

Identification of Parasites

Year	P. Vivax	P. Falciparum	P. Malariae	Mixed Infection	Species Undertermined
1976	25	7	3	-	4
1977	32	2	4	1	1
1978	34	5	7	-	1
1979	23	7	8	-	2
1980	30	6	5	1	7

TABLE 25  
PROPHYLACTIC IMMUNIZATIONS 1976 TO 1980

	1976	1977	1978	1979	1980
Smallpox	324,587	231,488	124,006	75,184	21,686
Cholera	114,545	91,150	86,833	61,793	21,881
Diphtheria/Pertussia/Tetanus	211,838	225,258	219,942	226,249	225,090
Diphtheria/Tetanus	98,358	153,786	109,692	119,375	77,252
Typhoid					
1st Dose	15,636	15,458	14,626	24,600	23,840
2nd Dose	9,074	5,434	3,613	6,374	3,856
Booster Dose	52,326	44,327	43,142	38,781	37,651
Tuberculosis (BCG)					
Infant	77,736	79,118	80,298	82,886	86,305
Others	80,550	47,149	58,149	53,904	47,808
Poliomyelitis					
Type I for Newborn	74,768	76,709	77,063	79,364	82,525
1st Dose - Trivalent	64,256	76,252	73,151	83,749	76,246
2nd Dose - Trivalent	72,071	73,883	71,358	73,843	71,540
Booster Dose - Trivalent	65,231	62,876	65,058	196,970	135,890
Measles	61,207	61,057	64,256	68,061	59,023
Rubella *	-	-	101,517	40,825	46,336

\* Anti-rubella vaccination was introduced in September, 1978

TABLE 26

## TUBERCULOSIS MORTALITY 1961, 1970 AND 1976 TO 1980

Year	Total Deaths from Tuberculosis	Tuberculosis Death Rate per 100,000 Population #	Tuberculosis Deaths as percentage of total registered deaths	Average Age at death from Tuberculosis
1961	1,907	60.2	10.2	43
1970	1,436	36.3	6.9	57.5
1976	568	12.8	2.4	59.5
1977	532	11.8	2.3	61
1978	420	9.1	1.8	61
1979	523	10.7	2.0	61
1980	551	10.9	2.1	62

# Rates for the years 1977 to 1980 based on revised population estimates after 1981 Census.

TABLE 27

## TUBERCULOSIS IN CHILDHOOD 1961, 1970 AND 1976 TO 1980

Year	Percentage* of newborns receiving BCG	Percentage of Tuberculosis deaths below 5 years	Percentage of Tuberculosis deaths under 1 year	Infantile Mortality from Tuberculosis (per 1,000 births)
1961	77.77	11.48	2.62	0.46
1970	93.32	0.63	-	-
1976	97.87	0.70	-	-
1977	98.01	0.38	-	-
1978	98.35	0.48	0.24	0.01
1979	98.32	0.96	0.19	0.01
1980	98.12	0.73	0.18	0.01

\* Percentage of newborns based on registered birth figures in 1961 and based on known birth figures since 1970.

TABLE 28

## TUBERCULOSIS NOTIFICATIONS 1961, 1970 AND 1976 TO 1980

Year	Government Chest Clinics	Other Govt. Institutions	Tung Wah Group Hospitals	Other Non-govt. Institutions & Private Sources	Total	Notification Rate per 100,000 population*
1961	8,957	2,056	947	624	12,584	397.21
1970	7,061	494	443	2,079	10,077	254.53
1976	4,684	507	234	2,503	7,928	178.41
1977	4,406	489	226	2,070	7,191	159.45
1978	3,897	556	244	1,926	6,623	144.07
1979	4,632	677	281	2,317	7,907	162.08
1980	5,228	584	252	2,001	8,065	160.07

\* Rates for the years 1977 to 1980 based on revised population estimates after 1981 Census.

TABLE 29

## WORK OF TUBERCULOSIS AND CHEST SERVICE 1980

Total attendances	837,594
Total patients attending (old & new)	99,310
Number of new patients	51,902

Classification of new patients

I) NSD # & Unknown	29,531 (56.90)
II) Diseases other than tuberculosis	7,632 (14.70)
III) Non-respiratory tuberculosis	379 (0.73)
a) Meninges	7 (0.01)
b) Bones and joints	36 (0.07)
c) Others	336 (0.65)
IV) Respiratory tuberculosis	
i) Not active and unknown activity	8,108 (15.62)
ii) Active	5,964 (11.49)
a) By bacteriology and extent	
Negative	
A1	1,809 (3.49)
A2	308 (0.59)
A3	85 (0.16)
Positive	
B1	1,284 (2.47)
B2	1,058 (2.04)
B3	625 (1.20)
Incomplete	
O1	661 (1.27)
O2	101 (0.19)
O3	33 (0.06)
b) By previous history and treatment	
No previous history of tuberculosis	4,986 (9.61)
Previously diagnosed, no treatment	37 (0.07)
Previously diagnosed, with treatment	785 (1.51)
Previous history not known	156 (0.30)
Total with examination completed	51,614 (99.45)

Note : Figures in brackets denote percent of total new patients

# Nil of significance detected

TABLE 30

## EXAMINATION OF NEW CONTACTS OF TUBERCULOSIS PATIENTS 1980

Number of patients listed	8,059	
Number of contacts listed	26,039	
(a) Number of children with negative tuberculin	2,417	
Number of children given BCG	2,416	
(b) Number of contacts x-rayed	15,317	(100.00%)
Results		
NSD#	14,052	( 91.74%)
Disease other than TB	364	( 2.38%)
Respiratory TB		
Active A (negative by bacteriology)	124	( 0.81%)
B (positive by bacteriology)	21	( 0.14%)
O (incomplete investigation)	5	( 0.03%)
Not active	713	( 4.65%)
Non-respiratory TB	4	( 0.03%)
Result not yet known	34	( 0.22%)

# Nil of significance detected

TABLE 31

## ANNUAL ATTENDANCES AND TREND OF VENEREAL DISEASES 1971 TO 1980

ATTENDANCES	1971	1972	1973	1974	1975	1976	1977	1978	1979	1980
<b>NEW ATTENDANCES</b>										
Syphilis	1,675	1,228	1,327	1,567	1,439	1,134	1,101	1,244	1,130	1,092
Non-congenital	86	65	118	68	66	179	79	83	37	102
Primary	20	21	34	19	28	17	12	17	14	36
Secondary	428	335	272	459	537	276	250	258	282	239
Early Latent	965	679	769	926	724	582	678	783	706	663
Late Latent	43	33	70	43	40	38	27	9	15	18
All Others										
Congenital	8	5	4	5	3	13	20	27	22	6
Under 1 year	125	90	60	47	41	29	35	67	54	28
Over 1 year										
Gonorrhoea	7,198	8,186	6,727	5,267	4,372	3,279	2,115	2,052	2,761	2,629
Non-Gonococcal Urethritis	687	1,054	1,495	1,285	845	1,095	909	847	974	960
Chancroid	442	396	243	143	157	113	197	234	163	357
Lymphogranuloma Venereum	165	144	80	71	54	33	36	48	36	76
Granuloma Inguinale	-	-	-	-	-	-	-	-	-	-
Others (Unclassified)	586	709	1,725	1,697	1,128	961	660	176	324	399
ALL VENEREAL DISEASES	10,753	11,717	11,597	10,030	7,995	6,615	5,018	4,601	5,388	5,513
NON-VENEREAL DISEASES	11,013	5,974	5,174	7,062	7,709	6,693	5,906	5,316	4,900	6,250
SKIN DISEASES	22,524	23,502	15,774	16,545	20,807	16,438	15,982	16,907	16,392	16,259
NEW ATTENDANCES (ALL TYPES)	44,290	41,193	32,545	33,637	36,511	29,746	26,906	26,824	26,680	28,022
TOTAL ATTENDANCES (ALL TYPES)	204,859	192,327	172,332	169,742	178,277	154,871	139,711	138,858	142,691	144,641

TABLE 32

## VDRL EXAMINATIONS IN EXPECTANT MOTHERS 1976 TO 1980

Examinations	1976	1977	1978	1979	1980
Venous Blood	66,021	66,884	66,790	68,966	71,482
Positive	261	325	385	363	417
% Positive	0.40	0.49	0.58	0.53	0.58

TABLE 33

## LEPROSY CASES 1971 TO 1980

## I) Incidence of Leprosy

Year	New Cases		Imported Cases	New Cases Admitted to	
	No.#	Incidence Rate* per 100,000 population		Hei Ling Chau Leprosarium	Lai Chi Kok Hospital
1971	117	2.9	14	85	-
1972	101	2.5	16	79	-
1973	100	2.4	14	47	-
1974	119	2.8	12	36	-
1975	78	1.8	1	-	27
1976	76	1.7	2	-	34
1977	73	1.6	1	-	24
1978	74	1.6	5	-	23
1979	70	1.4	7	-	20
1980	60	1.2	4	-	18

\* Rates for the years 1977 to 1980 based on revised population estimates after 1981 Census.

# Including imported cases.

## II) Number of New Cases by Age 1980

Age Group	No. of cases
Under 1	-
1 - 4	-
5 - 9	-
10 - 14	2
15 - 19	2
20 - 24	9
25 - 29	7
30 - 34	6
35 - 39	4
40 - 44	3
45 - 49	6
50 - 54	4
55 - 59	7
60 over	10
Total	60

TABLE 34

## ANALYSIS OF DERMATOLOGICAL CONDITIONS PRESENTING AT CLINICS 1980

Dermatological Conditions	Cases	Dermatological Conditions	Cases
Acne	954	Nevi (all types)	66
Alopecia	226	Pediculosis	32
Angioedema	-	Pemphigus	30
Carcinoma	15	Paronychia	159
Contact dermatitis	638	Pityriasis rosea	216
Dermatitis exfoliative	2	Pityriasis alba	285
Dermatitis herpetiformis	3	Pruritus	466
Dermatomyositis	22	Psoriasis	483
Drug eruption	73	Purpura	5
Eczema (all types)	7,139	Pyoderma	76
Epidermolysis bullosa	2	Raynaud's phenomenon	-
Erythema multiforme	23	Rosacea	74
Erythema nodosum	4	Scabies	929
Granulomata	17	Scleroderma	-
Herpes simplex	14	Tinea (all types)	2,028
Herpes zoster	206	TB Cutis	35
Ichthyosis	82	Tumors, benign	-
Keloid	108	Ulcer, varicose	46
Keratosis (all types)	125	Urticaria	643
Lichen amyloidosis	146	Vasculitis	-
Lichen planus	19	Verruca	703
Light sensitivity	-	Vitiligo	222
Lupus erythematosus (all types)	11	Xanthoma	24
Miliaria	59	Leprosy	10
Molluscum contagiosum	31	Miscellaneous	774
Neurodermatitis	746		
Neurofibromatosis	-	Total	17,971

TABLE 35

## DISTRIBUTION OF FAMILY HEALTH CENTRES AS AT 31ST MARCH 1981

Centre	Hong Kong	Kowloon	N.T. and Islands	Total
<u>Maternal &amp; Child Health</u>				
Full-Time				
with Midwifery Service	1	6	2	9
without Midwifery Service	7	6	1	14
Part-Time				
with Midwifery Service	-	-	12	12
without Midwifery Service	1	-	2	3
<u>Family Planning</u>				
Full-Time	-	3	3	6
Part-Time	10	11	14	35

TABLE 36

WORK OF FAMILY HEALTH SERVICE 1979 AND 1980

(Maternal and Child Health)

	<u>1979</u>	<u>1980</u>
<u>Number of centres</u>		
Full-time	23	23
Part-time *	15	15
<u>Ante-natal Sessions</u>		
Total Sessions	3,312	3,320
New attendances	32,462	37,033
Total attendances	205,395	234,619
Average attendance per session	62.02	70.67
Average attendance per person	6.33	6.34
<u>Post-natal Sessions</u>		
Total Sessions	1,683	1,694
New attendances	21,543	23,212
Total attendances	21,717	23,401
Percentage presenting with some abnormality	6.01%	4.69%
<u>Infant Welfare Sessions (0-2 years of age)</u>		
Total Sessions	8,055	8,192
New attendances	75,235	76,996
Total attendances	981,434	961,072
<u>Toddler Welfare Sessions (2-5 years of age)</u>		
Total Sessions	1,430	1,323
New attendances	36,981	36,203
Total attendances	101,075	92,333
<u>Percentage of new attendances presenting with some abnormality (0-5 years of age)</u>	1.35%	1.61%
<u>Home Visits</u>	79,105	89,837

\* Including 1 Temporary Suspended.

Table 36(a)

WORK OF FAMILY HEALTH SERVICE 1979 AND 1980

(Comprehensive Observation Service)

	<u>1979</u>	<u>1980</u>
<u>Number of centres</u>		
Full-time	8	8
Part-time	26	26
<u>Number of sessions held</u>		
	8,546	8,751
<u>Number of children examined</u>		
	72,852	81,854
<u>Number of new cases</u>		
	49,659	46,012
<u>Total number of developmental screening tests done</u>		
	89,831	97,801
<u>Number of new cases with single congenital anomaly/permanent disability</u>		
	1,421	1,473
<u>Number of new cases with multiple congenital anomalies/permanent disabilities</u>		
	222	197
<u>Number of referrals</u>		
	845	1,113

TABLE 37  
WORK OF FAMILY HEALTH SERVICE 1979 AND 1980  
(Family Planning)

		1979	1980
Number of centres	Full-time	6	6
	Part-time	35	35
	Total	41	41
Number of sessions provided		6,245	6,357
Number of clients	New	40,953	42,059
	Old	62,810	66,033
	Total	103,763	108,092
Number of attendances		312,173	333,250
Characteristics of new clients			
I. Contraceptive method	Pills	21,878	21,588
	Injections	312	343
	IUD's	481	500
	Condoms	16,700	17,997
	Other methods	1,582	1,631
	Total	40,953	42,059
II. Age	Under 20	1,910	1,721
	20 - 24	12,875	12,953
	25 - 29	16,870	17,157
	30 - 34	6,505	7,351
	35 - 39	1,803	1,821
	40 - 44	722	764
	45 & over	268	292
	Total	40,953	42,059

Note : New clients refer to clients paying their first visit to government family planning clinics, i.e. clients who have never attended any family planning clinics, and clients of Family Planning Association clinics inside government premises which were taken over by government in 1973/74.

TABLE 38  
WORK OF OCCUPATIONAL HEALTH DIVISION 1979 AND 1980

		1979	1980
<u>I. Number of Occupational Diseases Notified</u>			
Decompression sickness		426	328
Contact dermatitis		3	13
Silicosis #		227	205
Poisoning by lead		2	7
Poisoning by organic chemical		-	1
Gas poisoning #		4	4
Arc eye #		1	3
Asbestosis #		-	1
Toluene Disocyanate Induced Asthma #		-	1
Resin Induced Pharyngitis #		-	1
<u>II. Occupational Injuries</u>			
No. of occupational injuries reported		95,932	89,844
No. of accidents requiring notification under Employees' Compensation Ordinance *		66,835	70,621
<u>III. Workmen's Compensation Case Work</u>			
Total No. of interviews		184,112	163,023
Cases assessed by Industrial Health Officer		807	480
Cases assessed by Medical Board		24,293	23,748

# Voluntary notifications

\* Formerly known as Workmen's Compensation Ordinance

TABLE 39

ENVIRONMENTAL AND BIOLOGICAL MONITORING AND SURVEY WORK  
OF OCCUPATIONAL HEALTH DIVISION 1980I. Field Survey Work

<u>Nature of survey work</u>	<u>No. of surveys</u>	<u>No. of samples taken</u>
(A) Atmospheric monitoring :		
Acetone	3	5
Ammonia	9	18
Carbon dioxide	8	12
Carbon monoxide	9	21
Chloroform	1	1
Chronic acid mist	30	57
Dust	33	180
Explosive gas	12	10
Hydrogen chloride	1	2
Hydrogen cyanide	4	8
Hydrogen sulphide	7	9
Lead	23	58
Methyl ethyl ketone	4	4
Nitrogen dioxide	6	14
Oxygen	8	12
Perchloroethylene	2	2
Styrene	6	14
1, 1, 1-trichloroethane	4	7
Trichloroethylene	24	43
Toluene	6	12
Toluene di-isocyanate	2	5
Xylene	2	3
Hydrocarbons	1	2
Manganese	1	5
Asbestos	1	1
(B) Ventilation surveys		
General ventilation	100	
Local exhaust	270	
(C) Thermal surveys	11	
(D) Noise surveys	79	
(E) Lighting surveys	67	
(F) Radiation surveys	3	
	<u>737</u>	<u>505</u>

TABLE 39 (Cont'd)

II. Laboratory Analysis Work

<u>Nature of analysis work</u>	<u>No. of analyses</u>	<u>No. of samples/ specimens collected</u>
(A) Air-Pollution Monitoring Programme :		
Sulphur dioxide	1,188 )	2,736
Sulphur trioxide	433 )	
Smoke	1,115 )	
pH measurements	24 )	24
Total water insoluble matter	24 )	
Carbon disulphide soluble matter	24 )	
Ash	24 )	
Total water soluble matter	24 )	
Calcium	24 )	
Chloride	24 )	
Sulphate	22 )	
(B) Chemical analysis		
Asbestos	1	1
Lead	157	157
Silica	11	11
Zinc	1	1
Methylene chloride	2	2
Mercury	1	1
(C) Urinalysis		
Glucose	2,371 )	2,240
Protein	2,371 )	
Fluoride	148	148
Coproporphyrin	113	109
Total	<u>8,102</u>	<u>5,430</u>

Note : 199 samples were referred to the Government Laboratory for chemical analysis.



TABLE 41 (Cont'd)

Classification of beds	Internal Medicine	Surgery	Orthopaedics	Gynaecology	Obstetrics/Maternity	Paediatrics & Babies	Mentally-ill	Mentally Handicapped	Tuberculosis & Chest Diseases	Other Infectious Diseases	Geriatrics	Rehabilitation & Chronic	Other Specialties	Radiotherapy & Cancer	Casualty, Observation & Custodian	Unclassified	Total
<b>ii) Government-Assisted Institutions</b>																	
AHML Nethersole Hospital	74	73	-	60	99	63	-	-	-	-	-	90	-	-	-	16	385
Cheshire Home	-	50	140	-	-	-	-	-	-	-	-	-	10	-	-	-	90
Duchess of Kent C.O. Hospital	120	115	42	-	-	24	-	-	324	-	-	-	-	-	-	-	200
Grantham Hospital	-	-	-	-	-	-	-	-	-	-	-	-	-	180	-	-	625
Nam Long Hospital	-	-	-	-	-	-	-	-	390	-	-	-	-	-	-	-	180
Ruttonjee Sanatorium	-	47	112	8	-	-	-	-	-	-	18	-	-	12	-	-	390
Sandy Bay Convalescent Hospital	126	226	-	-	-	21	-	-	-	-	-	-	6	-	-	-	323
Tung Wah Hospital	485	90	10	7	36	-	-	-	-	-	-	-	-	-	-	10	732
Tung Wah Eastern Hospital	86	-	-	-	-	-	-	-	-	-	-	-	-	-	-	-	245
Caritas Medical Centre	234	138	63	78	113	127	-	120	-	98	76	-	18	52	-	26	1,143
HK Buddhist Hospital	199	64	-	10	-	32	-	-	-	-	-	-	-	-	-	45	350
Kwong Wah Hospital	384	290	65	104	303	201	-	-	-	-	-	80	-	-	10	195	1,552
Margaret Trench Medical Rehab. Centre	-	-	-	-	-	-	-	-	-	-	-	-	-	-	-	-	80
Our Lady of Maryknoll Hospital	104	35	-	16	30	56	-	-	-	-	-	-	-	-	-	16	257
United Christian Hospital	120	131	95	45	47	87	30	-	-	-	40	-	-	-	7	30	632
Wong Tai Sin Infirmary	363	71	65	8	-	-	-	-	172	-	-	-	2	-	-	-	681
Haven of Hope Hospital	41	-	-	-	-	-	-	-	197	-	-	58	-	-	-	-	296
Pinehill Village S.G.U.	-	-	-	-	-	-	-	56	-	-	-	-	-	-	-	-	56
Pok Oi Hospital	110	56	-	-	23	29	-	-	-	-	-	-	-	-	-	-	218
Yan Chai Hospital	15	62	-	10	25	15	-	-	-	-	-	-	-	-	-	23	150
<b>Total</b>	<b>2,461</b>	<b>1,448</b>	<b>592</b>	<b>346</b>	<b>676</b>	<b>655</b>	<b>30</b>	<b>176</b>	<b>1,083</b>	<b>98</b>	<b>134</b>	<b>228</b>	<b>36</b>	<b>244</b>	<b>17</b>	<b>361</b>	<b>8,585</b>
<b>(20 Government-Assisted Institutions)</b>																	

TABLE 41 (Cont'd)

Classification of beds	Internal Medicine	Surgery	Orthopaedics	Gynaecology	Obstetrics/Maternity	Paediatrics & Babies	Mentally-ill	Mentally Handicapped	Tuberculosis & Chest Diseases	Other Infectious Diseases	Geriatrics	Rehabilitation & Chronic	Other Specialties	Radiotherapy & Cancer	Casualty, Observation & Custodian	Unclassified	Total
<b>iii) Private Institutions</b>																	
Canossa Hospital	58	64	24	14	32	8	-	-	-	-	-	-	-	-	-	6	200
HK Adventist Hospital	31	23	-	-	13	13	-	-	-	-	-	-	-	-	-	-	86
HK Central Hospital	44	45	-	14	3	5	-	-	6	7	48	8	13	14	-	5	118
HK Sanatorium & Hospital	128	141	4	28	65	99	-	-	6	4	-	-	-	-	-	47	563
Matilda & War Memorial Hospital	-	-	-	-	12	-	6	-	8	-	6	3	14	3	7	5	59
St. Paul's Hospital	111	97	6	38	64	37	-	-	-	-	-	-	-	-	-	5	405
Baptist Hospital	77	66	-	-	31	15	-	-	-	2	-	-	-	-	-	8	199
Evangel Hospital	17	10	-	3	16	4	-	-	-	5	-	-	-	-	-	-	50
Precious Blood Hospital	41	26	-	18	39	6	-	-	6	5	5	15	-	-	-	-	161
St. Teresa's Hospital	-	-	-	-	67	36	-	-	-	11	-	-	-	-	-	411	525
Adventist Hospital	36	36	-	-	23	18	-	-	-	-	-	-	-	-	-	-	113
2 Nursing & Maternity Homes (HKI)	-	-	-	-	6	-	-	-	-	-	-	-	-	-	-	-	6
6 Nursing & Maternity Homes (Kln.)	1	1	-	-	50	-	-	-	-	-	-	-	-	-	-	-	52
Nursing & Maternity Home (NT)	-	-	-	-	-	-	-	-	-	-	-	-	-	-	-	-	-
<b>Total</b>	<b>544</b>	<b>509</b>	<b>34</b>	<b>115</b>	<b>421</b>	<b>241</b>	<b>6</b>	<b>-</b>	<b>20</b>	<b>29</b>	<b>59</b>	<b>26</b>	<b>27</b>	<b>17</b>	<b>7</b>	<b>482</b>	<b>2,537</b>
<b>(19 Private Institutions)</b>																	
All Institutions (HK Island)	1,573	1,289	458	273	661	431	21	-	728	11	72	101	93	227	178	221	6,337
All Institutions (Kowloon)	2,073	1,511	766	409	1,106	930	504	120	286	176	121	95	116	149	139	844	9,345
All Institutions (NT)	519	422	180	46	387	221	2,143	256	197	172	103	58	-	-	321	99	5,124
<b>GRAND TOTAL</b>	<b>4,165</b>	<b>3,222</b>	<b>1,404</b>	<b>728</b>	<b>1,54</b>	<b>1,582</b>	<b>2,668</b>	<b>376</b>	<b>1,211</b>	<b>359</b>	<b>296</b>	<b>254</b>	<b>209</b>	<b>376</b>	<b>638</b>	<b>1,164</b>	<b>20,806</b>

Note: 'Other Specialties' beds include Eye, ENT, Skin & Dental beds.  
 'Unclassified' beds include private wards, intensive care units & staff beds.

TABLE 42  
IN-PATIENTS TREATED IN GOVERNMENT, GOVERNMENT-ASSISTED AND PRIVATE INSTITUTIONS 1980

Institutions	In-patients Discharged					Deaths						Total In-patients Treated		
	General	Infectious	Tuberculosis	Maternity	Psychiatric	Health Services for other reasons	Total	General	Infectious	Tuberculosis	Maternity		Psychiatric	Health Services for other reasons
<b>i) GOVERNMENT INSTITUTIONS</b>														
Queen Mary Hospital	59449	235	584	2835	285	-	63388	2398	20	20	-	-	-	2438
Tang Shiu Kin Hospital	5972	24	11	4	10	-	6021	-	-	-	-	-	-	-
Tsan Yuk Hospital	2408	-	-	9868	-	-	12276	51	-	-	-	-	-	51
Kowloon Hospital	13419	27	1126	480	543	-	15595	202	2	51	-	-	-	255
Lai Chi Kok Hospital	-	22	-	-	24	-	46	3	-	-	-	-	-	3
Queen Elizabeth Hospital	114122	3470	1129	20529	774	-	140024	3538	53	66	2	-	-	3659
Castle Peak Hospital	131	-	-	-	4443	-	4574	64	7	-	-	-	-	71
Fanling Hospital	131	-	-	-	1	-	132	65	-	-	-	-	-	65
Kwai Chung Hospital	-	-	-	-	4	-	4	-	-	-	-	-	-	4
Princess Margaret Hospital	59829	5940	518	9411	319	-	76017	1958	66	27	-	-	-	2051
Siu Lam Hospital	10	1	-	-	5	-	16	11	-	-	-	5	-	16
South Lantau Hospital	22	-	-	50	-	-	72	87	-	-	-	-	-	72
St. John Hospital	658	15	2	233	1	-	909	-	-	-	-	-	-	87
Prison Hosp./Treat. Centre (HK Island)	618	83	85	19	2	-	807	-	-	-	-	-	-	-
Prison Hosp./Treat. Centre (Kowloon)	2008	28	84	-	1560	-	3680	-	-	-	-	-	-	-
Prison Hosp./Treat. Centre (NT)	4075	612	88	211	1149	394	6529	4	-	-	-	-	-	4
Maternity Homes (HK Island)	-	-	-	475	-	-	475	-	-	-	-	-	-	-
Maternity Homes (Kowloon)	-	-	-	11653	-	-	11653	-	-	-	-	-	-	-
Maternity Homes (NT)	-	-	-	11099	-	-	11099	2	-	-	-	-	-	2
<b>TOTAL GOVERNMENT INSTITUTIONS</b>	<b>262852</b>	<b>10457</b>	<b>3627</b>	<b>66867</b>	<b>9120</b>	<b>394</b>	<b>353317</b>	<b>8383</b>	<b>148</b>	<b>164</b>	<b>2</b>	<b>5</b>	<b>-</b>	<b>8702</b>

TABLE 42 (Cont'd)

Institutions	In-patients Discharged					Deaths						Total In-patients Treated		
	General	Infectious	Tuberculosis	Maternity	Psychiatric	Health Services for other reasons	Total	General	Infectious	Tuberculosis	Maternity		Psychiatric	Health Services for other reasons
<b>ii) GOVERNMENT-ASSISTED INSTITUTIONS</b>														
AHML Nethersole Hospital	9042	131	66	6177	8	-	15424	213	-	-	-	-	-	213
Cheshire Home	4	-	-	-	1	-	5	16	-	-	-	-	-	16
Duchess of Kent Children's Orthopaedic Hospital & Convalescent Home	1703	46	32	-	87	-	1868	-	-	-	-	-	-	-
Grantham Hospital	4935	16	784	2	10	-	5747	387	-	21	-	-	-	408
Nam Long Hospital	79	-	-	-	-	-	79	611	-	-	-	-	-	611
Ruttonjee Sanatorium	696	4	923	-	1	-	1624	199	1	29	-	-	-	229
Sandy Bay Convalescent Hospital	2578	27	26	-	12	-	2643	419	8	-	-	-	-	427
Tung Wah Hospital	8497	53	61	1	23	-	8635	496	5	3	-	-	-	504
Tung Wah Eastern Hospital	3685	74	14	1846	84	-	5703	274	2	-	-	-	-	276
Caritas Medical Centre	18753	1253	140	4736	106	-	24988	836	4	9	-	1	-	850
Hong Kong Buddhist Hospital	5884	25	30	252	50	-	6241	855	2	1	-	-	-	858
Kwong Wah Hospital	36074	400	528	12054	612	-	49668	1998	12	45	1	-	-	2056
Margaret Trench Medical Rehab. Centre	415	7	3	-	-	-	425	-	-	-	-	-	-	-
Our Lady of Maryknoll Hospital	6534	142	76	2615	62	117	9546	302	3	-	-	-	-	305
United Christian Hospital	18876	669	300	4943	405	514	25707	1091	11	25	-	-	-	1127
Wong Tai Sin Infirmary	518	1	460	-	4	-	983	548	9	16	-	-	-	573
Haven of Hope Hospital	296	9	698	-	4	-	1007	64	-	50	-	-	-	114
Pok Oi Hospital	5296	40	16	2000	21	-	7373	348	2	2	-	-	-	352
Finehill Village Severe Grade Unit	-	-	-	-	10	-	10	-	-	-	-	-	-	-
Yan Chai Hospital	3593	22	21	2411	6	-	6053	156	-	1	-	-	-	157
<b>TOTAL GOVERNMENT-ASSISTED INSTITUTIONS</b>	<b>127458</b>	<b>2919</b>	<b>4178</b>	<b>37037</b>	<b>1506</b>	<b>631</b>	<b>173729</b>	<b>8813</b>	<b>59</b>	<b>202</b>	<b>1</b>	<b>1</b>	<b>-</b>	<b>9076</b>
<b>TOTAL GOVERNMENT-ASSISTED INSTITUTIONS</b>	<b>127458</b>	<b>2919</b>	<b>4178</b>	<b>37037</b>	<b>1506</b>	<b>631</b>	<b>173729</b>	<b>8813</b>	<b>59</b>	<b>202</b>	<b>1</b>	<b>1</b>	<b>-</b>	<b>9076</b>