



DAILY INFORMATION BULLETIN

ISSUED BY GOVERNMENT INFORMATION SERVICES
BEACONSFIELD HOUSE, HONG KONG. TEL.: 842 8777

THURSDAY, NOVEMBER 25, 1993

<u>CONTENTS</u>	<u>PAGE NO.</u>
NEW LAW TO ENSURE CONSUMER GOODS ARE SAFE	1
SWA : RETURN TO NEGOTIATING TABLE	2
RESIDENTIAL MORTGAGE SURVEY RESULTS FOR OCTOBER	3
SWEATER REVIEW RESULTS DRAW CONCERN	8
ADVICE FOR VESSELS IN CENTRAL VICTORIA HARBOUR	9
PHASING OUT OF CENTRAL-JORDAN ROAD CAR FERRY	11
STRAY CATTLE HAZARDS AND NUISANCES REDUCED	12
APPLICATIONS FOR MINIBUS LICENCES TO CLOSE ON MONDAY	13
FINANCE COMMITTEE MEETS TOMORROW	13
HONG KONG GOVERNMENT EXCHANGE FUND MONEY MARKET OPERATIONS ..	14

NEW LAW TO ENSURE CONSUMER GOODS ARE SAFE

* * * * *

THE GOVERNMENT PROPOSES TO IMPOSE A STATUTORY DUTY ON SUPPLIERS, MANUFACTURERS AND IMPORTERS OF CONSUMER GOODS TO ENSURE THAT THE GOODS THEY SUPPLY FOR SALE IN HONG KONG ARE SAFE.

THE PROPOSALS ARE SET OUT IN THE CONSUMER GOODS SAFETY BILL WHICH WILL BE INTRODUCED TO THE LEGISLATIVE COUNCIL ON DECEMBER 8 THIS YEAR.

"THE BILL INTRODUCES A GENERAL SAFETY REQUIREMENT FOR ALL CONSUMER GOODS, BASED ON THAT IN THE UNITED KINGDOM CONSUMER PROTECTION ACT 1987," A GOVERNMENT SPOKESMAN SAID.

"IT PROVIDES GUIDELINES TO THE SUPPLIERS OF CONSUMER GOODS ON COMPLIANCE WITH THE GENERAL SAFETY REQUIREMENT."

UNDER THE BILL, THE COURT MAY TAKE INTO ACCOUNT THE FOLLOWING FACTORS IN CONSIDERING WHETHER A SUPPLIER OF CONSUMER GOODS HAS COMPLIED WITH THE GENERAL SAFETY REQUIREMENT:

- * THE MANNER IN WHICH, AND THE PURPOSE FOR WHICH, THE CONSUMER GOODS ARE PRESENTED, PROMOTED OR MARKETED;
- * THE USE OF ANY MARK IN RELATION TO THE CONSUMER GOODS AND INSTRUCTIONS OR WARNINGS GIVEN FOR THE KEEPING, USE OR CONSUMPTION OF THE CONSUMER GOODS;
- * COMPLIANCE WITH REASONABLE SAFETY STANDARDS PUBLISHED BY A STANDARDS INSTITUTE APPLYING TO A PARTICULAR CLASS OF CONSUMER GOODS; AND
- * THE EXISTENCE OF ANY REASONABLE MEANS TO MAKE THE CONSUMER GOODS SAFER.

"THE COMMISSIONER OF CUSTOMS AND EXCISE WILL BE THE AUTHORITY TO ENFORCE THE BILL BY ACTING ON COMPLAINTS AND CONDUCTING SPOT CHECKS," HE SAID.

A DEDICATED ENFORCEMENT TEAM OF 27 OFFICERS WILL BE ESTABLISHED. TOTAL ANNUAL RECURRENT FINANCIAL IMPLICATIONS WOULD AMOUNT TO ABOUT \$10 MILLION.

THE PROPOSED MODE OF ENFORCEMENT IS MODELLED CLOSELY ON THE TOYS AND CHILDREN'S PRODUCTS SAFETY ORDINANCE.

THE BILL ESTABLISHES A SAFETY CONTROL NOTICE SYSTEM UNDER WHICH THE COMMISSIONER MAY ISSUE DIFFERENT NOTICE TO SUPPLIERS OF CONSUMER GOODS TO REMEDY ABUSES RESULTED FROM UNSAFE CONSUMER GOODS. THESE NOTICES INCLUDE:

- * NOTICE TO WARN WHICH REQUIRES THE SUPPLIER TO PUBLISH A WARNING THAT SPECIFIED CONSUMER GOODS MAY BE UNSAFE UNLESS CERTAIN STEPS ARE TAKEN;

/* PROHIBITION NOTICE

- * PROHIBITION NOTICE WHICH PROHIBITS THE SUPPLIER FROM SUPPLYING UNSAFE CONSUMER GOODS FOR A SPECIFIED PERIOD OF TIME;
- * RECALL NOTICE WHICH REQUIRES THE SUPPLIER TO RECALL FROM THE MARKET UNSAFE CONSUMER GOODS CAUSING A SIGNIFICANT RISK TO CONSUMERS.

"THE BILL PROVIDES FOR CHECKS AND BALANCES AGAINST POSSIBLE ABUSE OF ENFORCEMENT POWERS," THE SPOKESMAN SAID.

AN APPEAL BOARD PANEL IS PROPOSED TO BE SET UP TO HEAR APPEALS AGAINST NOTICES ISSUED AND CERTAIN DECISIONS MADE BY THE COMMISSIONER.

THE PANEL WILL INCLUDE LEGAL PRACTITIONERS, SCIENTISTS IN PRODUCT TESTING FIELD, AND MEMBERS FROM THE CONSUMER GOODS INDUSTRY AND THE GENERAL PUBLIC.

THE BILL ALSO PROVIDES FOR COMPENSATION FOR WRONGFUL SEIZURE AND DESTRUCTION OF CONSUMER GOODS BY THE ENFORCEMENT AUTHORITY.

"A PERSON WHO SUPPLIES UNSAFE CONSUMER GOODS COMMITS AN OFFENCE," HE SAID.

"HE SHALL BE LIABLE ON FIRST CONVICTION TO A FINE OF \$100,000 AND IMPRISONMENT FOR ONE YEAR, AND ON SUBSEQUENT CONVICTION TO A FINE OF \$500,000 AND IMPRISONMENT FOR TWO YEARS."

THE BILL APPLIES TO ALL GOODS THAT ARE ORDINARILY SUPPLIED FOR PRIVATE USE OR CONSUMPTION, INCLUDING THEIR PACKAGING.

IT DOES NOT APPLY TO CONSUMER GOODS IN TRANSIT, IN THE COURSE OF TRANSHIPMENT OR MANUFACTURED FOR EXPORT.

"THERE WILL BE A ONE-YEAR GRACE PERIOD AFTER ENACTMENT OF THE BILL FOR THE CONSUMER GOODS INDUSTRY TO ADJUST," THE SPOKESMAN SAID.

THE BILL WILL BE GAZETTED ON DECEMBER 3.

- - - - 0 - - - -

SWA : RETURN TO NEGOTIATING TABLE

* * * * *

THE SOCIAL WORK ASSISTANT (SWA) BRANCH REPRESENTATIVES MET SWD MANAGEMENT THIS MORNING (THURSDAY) AND BOTH SIDES AGREED THAT THE SOLUTION TO THE PAY DISPUTE PROBLEM WOULD BE TO RETURN TO THE CONFERENCE TABLE.

IT WAS FURTHER AGREED THAT A TASK GROUP WOULD BE FORMED AND MANAGEMENT AND STAFF SIDES WOULD WORK TOGETHER TO IDENTIFY ANY CHANGE IN JOB CONTENT, WORK COMPLEXITY, DUTIES OR RESPONSIBILITY OF THE SWA GRADE SINCE THE STANDING COMMISSION'S SALARY REVIEW IN 1989.

THE MANAGEMENT RECOGNIZED THAT THERE HAD BEEN CHANGES TO THE JOB CONTENT ETC, BUT WHETHER SUCH WOULD CONSTITUTE SUFFICIENT JUSTIFICATION TO SUBSTANTIATE A CASE FOR SALARY REVIEW REMAINS TO BE SEEN AFTER COMPLETION OF THE WORK OF THE TASK GROUP.

A SOCIAL WELFARE DEPARTMENT SPOKESMAN SAID THAT THE TASK GROUP WOULD AIM TO COMPLETE ITS TASK IN THREE MONTHS. ITS FINDINGS WOULD THEN BE SUBMITTED TO THE SWD MANAGEMENT TO EXAMINE IF THERE WOULD BE A CASE TO SUBSTANTIATE THE SWA BRANCH'S REQUEST FOR SALARY REVIEW.

AS A GESTURE OF GOODWILL ON BOTH SIDES TO COME BACK TO THE CONFERENCE TABLE, THE ADMINISTRATION IS WILLING TO WITHDRAW THE IMPOSITION OF SANCTION, UNDER CSR 610, I.E. DEDUCTION OF SALARY FOR THE THREE DAYS' SIT-IN STAGED BY THE SWA BRANCH REPRESENTATIVES ON 25-27 OCTOBER. ON THE STAFF SIDE, THE SWA BRANCH IS WILLING TO CALL OFF ALL CONFRONTATIONAL ACTION.

- - - - 0 - - - -

RESIDENTIAL MORTGAGE SURVEY RESULTS FOR OCTOBER

* * * * *

THE TOTAL AMOUNT OF OUTSTANDING RESIDENTIAL MORTGAGE LENDING FELL SLIGHTLY IN OCTOBER, ACCORDING TO RESULTS OF THE LATEST MONTHLY SURVEY CONDUCTED BY THE HONG KONG MONETARY AUTHORITY (HKMA).

THE FIGURES SHOW THAT THE TOTAL AMOUNT OF OUTSTANDING LENDING BY THE 28 INSTITUTIONS IN THE SURVEY FELL BY 0.01 PER CENT IN OCTOBER, AGAINST A RISE OF 0.8 PER CENT IN SEPTEMBER.

"THIS IS THE FIRST MONTHLY FALL SINCE FEBRUARY THIS YEAR, REFLECTING A CONSOLIDATION OF THE PROPERTY MARKET IN THE LIGHT OF THE TIGHTENED LENDING POLICIES RECENTLY ADOPTED BY THE BANKING SECTOR," DEPUTY CHIEF EXECUTIVE (BANKING) OF THE HKMA, MR DAVID CARSE, SAID TODAY (THURSDAY).

AVERAGE LENDING OVER THE LAST THREE MONTHS HAS FALLEN SHARPLY TO 13.8 PER CENT (ANNUALISED) FROM 26.1 PER CENT IN THE THREE-MONTH PERIOD TO SEPTEMBER.

NEW LOANS APPROVED BUT NOT YET DRAWN ALSO FELL SLIGHTLY BOTH IN NUMBERS (TO 2,105 FROM 2,186) AND IN VALUE (TO \$2.6 BILLION FROM \$2.9 BILLION).

"JUDGING FROM THESE FIGURES, I EXPECT THE AMOUNT OF OUTSTANDING LENDING TO BE LITTLE CHANGED IN NOVEMBER," MR CARSE SAID.

WHILE WELCOMING THE SLOW-DOWN, MR CARSE NOTED THAT THERE HAD BEEN A CLEAR CYCLICAL PATTERN IN LENDING OVER THE LAST TWO YEARS AND THAT THE PRESENT POSITION COULD PROVE TO BE TEMPORARY.

"INSTITUTIONS SHOULD THEREFORE CONTINUE TO ADOPT A CAUTIOUS APPROACH," HE SAID.

REGARDING LENDING FOR THE PURCHASE OF PROPERTIES IN CHINA, THE LATEST FIGURES SHOW THAT SUCH LENDING ROSE BY 2.3 PER CENT IN OCTOBER, FROM \$3.1 BILLION TO \$3.2 BILLION.

"WE HAVE ESTABLISHED THAT THE INCREASE IS ATTRIBUTABLE TO THE DRAWDOWN OF LOANS FOR THE PURCHASE OF RESIDENTIAL PROPERTIES WHICH WERE APPROVED BY THE LENDING INSTITUTIONS SOME MONTHS AGO," MR CARSE SAID.

NEW LOAN APPROVALS FELL SLIGHTLY IN OCTOBER, FROM \$184 MILLION TO \$176 MILLION.

- - - - -

Residential Mortgage Loans in Hong Kong Results of Survey for October 1993

	<u>October</u> <u>1993</u>	<u>September</u> <u>1993</u>
--	-------------------------------	---------------------------------

(Amount in HK\$ mn)

A. Sample of 28 authorised institutions

1. Outstanding lending

a. Amount	200,062	200,087
b. Monthly growth	-0.01%	0.8%
c. Twelve-month change	14.4%	15.1%
d. Average change (annualized)		
Latest three months	13.8%	26.1%
Latest twelve months	14.6%	15.5%

2. Gross loans made during month

a. Amount	3,630	6,311
b. Number	3006	5167

3. New loans approved during month drawn and undrawn

a. Amount	3,920	4,830
b. Number	3152	3787

4. New loans approved during month but not yet drawn

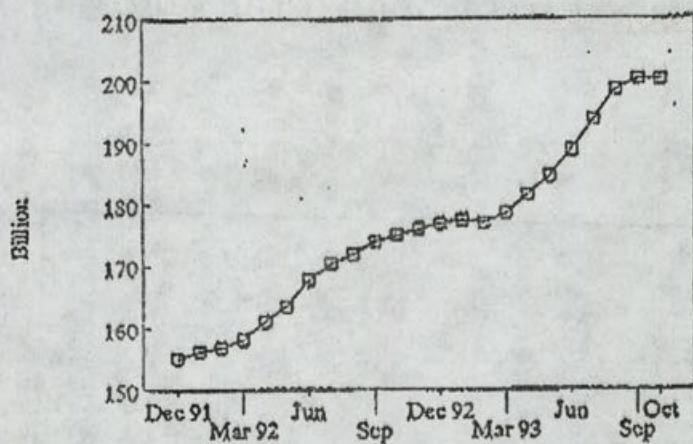
a. Amount	2,564	2,873
b. Number	2105	2186

/Chart A

Chart A

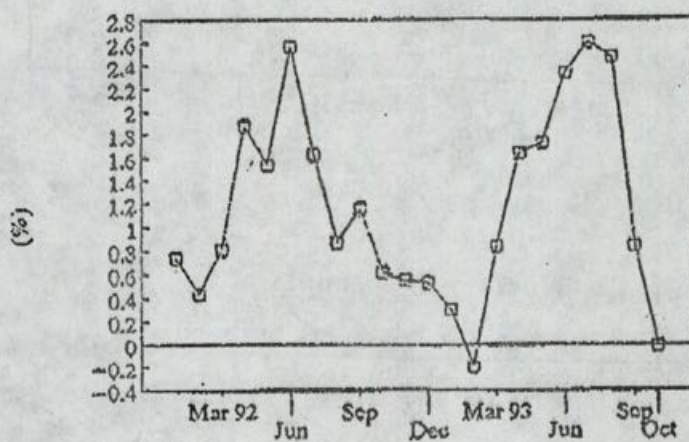
RESIDENTIAL MORTGAGE LOANS IN HONG KONG
(28 institutions)

Outstanding balance at end of month



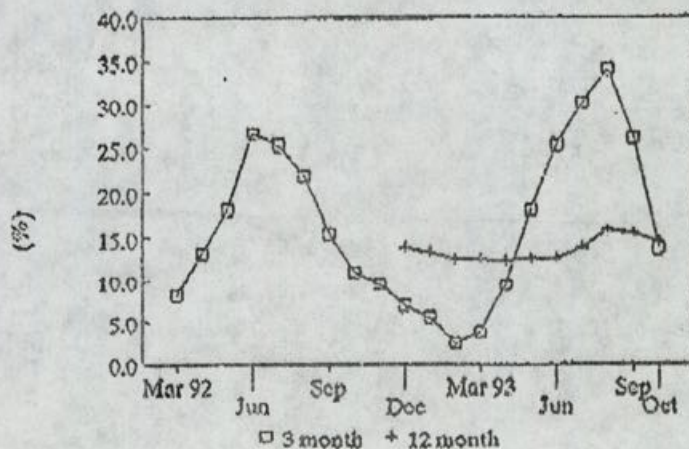
Δ1

Monthly growth rate



Δ2

3 month and 12 month moving average growth rate on annualised basis



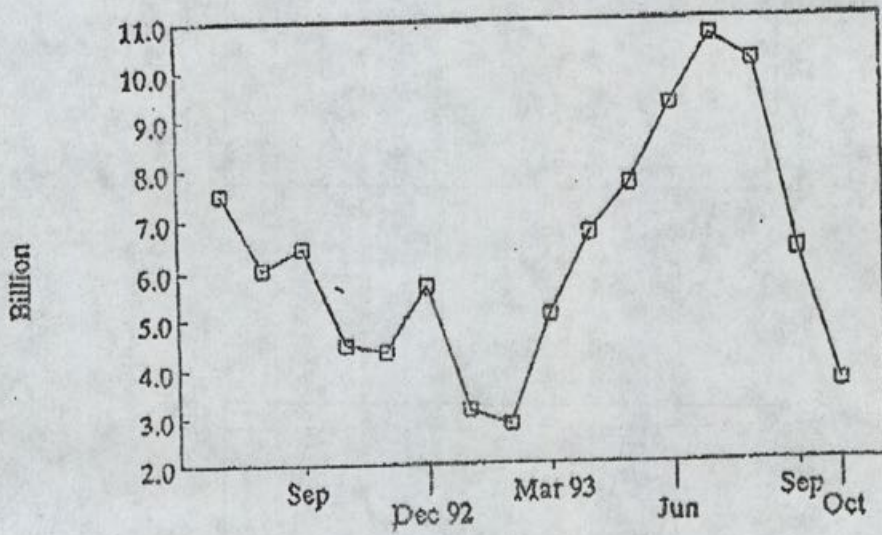
Δ3

Chart B

RESIDENTIAL MORTGAGE LOANS IN HONG KONG
(28 institutions)

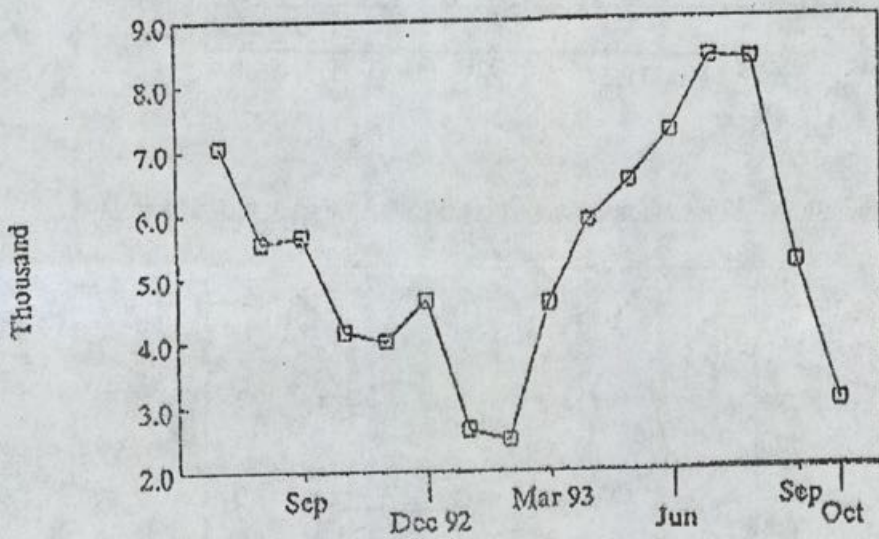
GROSS LOANS MADE DURING THE MONTH

Amount



B1

Number of accounts



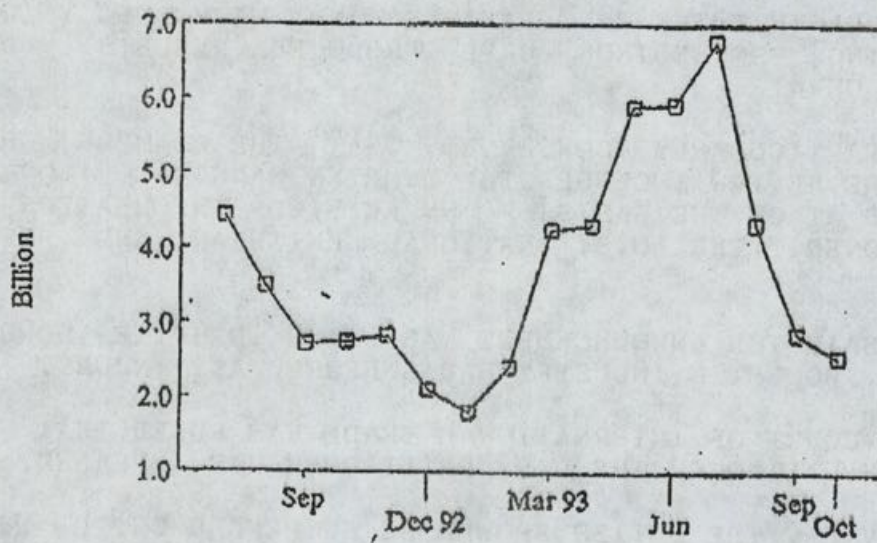
B2

Chart C

RESIDENTIAL MORTGAGE LOANS IN HONG KONG
(28 institutions)

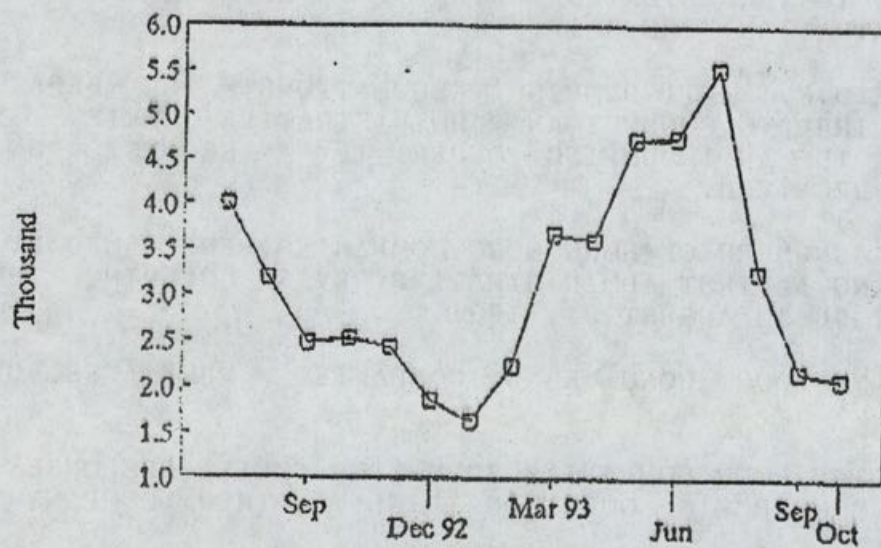
NEW LOANS APPROVED BUT NOT YET DRAWN

Amount



C1

Number of accounts



C2

THURSDAY, NOVEMBER 25, 1993

- 8 -

SWEATER REVIEW RESULTS DRAW CONCERN

* * * * *

ASSISTANT DIRECTOR-GENERAL OF TRADE, MR PETER S T PANG, EXPRESSED DEEP CONCERN AT THE U.S. DEPARTMENT OF COMMERCE'S PRELIMINARY DETERMINATION OF THE FIRST ADMINISTRATIVE REVIEW OF THE ANTI-DUMPING CASE AGAINST MAN-MADE FIBRE SWEATERS FROM HONG KONG.

"THE PRELIMINARY DETERMINATION IS A GREAT DISAPPOINTMENT," MR PANG SAID.

"WE DO FEEL THAT THE CALCULATIONS AND METHODOLOGY UNDER THE U.S. ANTI-DUMPING PROCEEDINGS HAVE PRODUCED RESULTS WHICH ARE UNREALISTIC AND UNFAIR.

"WE ARE PARTICULARLY CONCERNED THAT THE SAMPLE GROUP RATE DETERMINED IN THE REVIEW INCLUDES THE DUMPING MARGIN OF ONE COMPANY WHICH IS ARRIVED AT ON THE BASIS OF UNVERIFIED INFORMATION PROVIDED BY THE PETITIONER, THE U.S. NATIONAL KNITWEAR AND SPORTSWEARS ASSOCIATION."

MR PANG SAID THE ANNOUNCEMENT WAS MADE DESPITE DOUBTS ABOUT WHETHER THE U.S. DOMESTIC INDUSTRY HAD SUFFERED ANY INJURY.

THE U.S. COURT OF INTERNATIONAL TRADE HAS RULED THAT THE CASE REMAINS UNPROVEN, ALTHOUGH THE U.S. PETITIONER HAS APPEALED.

"IN OUR VIEW, THE DUTIES SHOULD BE SUSPENDED UNTIL THE APPEAL IS HEARD.

"THE HONG KONG GOVERNMENT IS IN CLOSE CONTACT WITH REPRESENTATIVES OF THE INDUSTRY, AND WILL ENCOURAGE THE HONG KONG SWEATER INDUSTRY TO TAKE EVERY OPPORTUNITY TO REPRESENT ITS CASE TO THE U.S. ADMINISTRATION," HE SAID.

UNDER THE U.S. ANTI-DUMPING REGULATIONS, THE DEPARTMENT OF COMMERCE IS REQUIRED TO CONDUCT AN ADMINISTRATIVE REVIEW 12 MONTHS FROM THE DATE OF THE ANTI-DUMPING ORDER IF A REQUEST FOR SUCH A REVIEW HAS BEEN RECEIVED.

IN 1991, A NUMBER OF HONG KONG COMPANIES WERE NAMED BY THE U.S. PETITIONER SEEKING A FIRST ADMINISTRATIVE REVIEW COVERING THE PERIOD FROM APRIL 24, 1990 TO AUGUST 31, 1991.

EVENTUALLY FOUR HONG KONG COMPANIES WERE SELECTED FOR INVESTIGATION.

THREE OF THE FOUR COMPANIES SUBMITTED THEIR RESPONSES TO THE DEPARTMENT OF COMMERCE'S QUESTIONNAIRE. ANOTHER COMPANY DID NOT RESPOND.

YESTERDAY (NOVEMBER 24), THE DEPARTMENT OF COMMERCE ANNOUNCED THE PRELIMINARY DETERMINATION OF THE FIRST ADMINISTRATIVE REVIEW IN WHICH IT ASSIGNED NEW RATES TO DIFFERENT GROUPS OF HONG KONG COMPANIES.

/THE FOUR

THE FOUR COMPANIES SELECTED FOR INVESTIGATION IN THE REVIEW WERE ASSIGNED THEIR OWN INDIVIDUAL RATES.

OF THESE, THE THREE COMPANIES THAT CO-OPERATED WITH THE DEPARTMENT OF COMMERCE RECEIVED A NIL RATE IN ONE CASE AND 5.86 PER CENT FOR THE TWO OTHER.

THE COMPANY THAT DID NOT RESPOND TO THE DEPARTMENT OF COMMERCE'S QUESTIONNAIRE RECEIVED A PUNITIVE 115.15 PER CENT RATE.

FOURTEEN OF THE OTHER 22 COMPANIES NAMED BY THE U.S. NATIONAL KNITWEAR AND SPORTSWEARS ASSOCIATION BUT NOT SELECTED FOR INVESTIGATION BY THE DEPARTMENT OF COMMERCE WERE ASSIGNED A NEW "SAMPLE GROUP RATE" OF 31.72 PER CENT, A SHARP INCREASE FROM THE CURRENT RATE OF 5.86 PER CENT.

THIS WAS CALCULATED AS A SIMPLE AVERAGE OF THE INDIVIDUAL RATES ASSIGNED TO THE FOUR COMPANIES INVESTIGATED, INCLUDING THE UNVERIFIED PUNITIVE RATE ON THE COMPANY THAT DID NOT RESPOND IN THE REVIEW.

FOUR OTHER COMPANIES IN THE SAMPLE GROUP THAT HAD NOT RETURNED A SAMPLING QUESTIONNAIRE TO THE DEPARTMENT OF COMMERCE WERE ALSO ASSIGNED THE PUNITIVE 115.15 PER CENT RATE.

THE REMAINING FOUR COMPANIES IN THE SAMPLE GROUP THAT DID NOT EXPORT SWEATERS TO THE U.S. DURING THE REVIEW PERIOD RETAINED THE CURRENT RATE OF 5.86 PER CENT.

OTHER COMPANIES NOT IN THE SAMPLE GROUP WILL CONTINUE TO PAY THE CURRENT ANTI-DUMPING DUTY RATE OF 5.86 PER CENT.

- - - - 0 - - - -

ADVICE FOR VESSELS IN CENTRAL VICTORIA HARBOUR

* * * * *

COXSWAINS OF LOCAL VESSELS ARE ADVISED TO TAKE EXTRA CARE WHEN NAVIGATING IN THE CENTRAL PART OF VICTORIA HARBOUR AS THE PATTERN OF MARINE TRAFFIC WILL CHANGE DRASTICALLY, THE ASSISTANT DIRECTOR OF MARINE (PLANNING AND LOCAL SERVICES), MR S Y TSUI, SAID TODAY (THURSDAY).

"THE MARINE DEPARTMENT EXPECTS THE CLOSURE OF THE BLAKE PIER AND THE RECLAMATION WORKS IN CENTRAL WOULD BRING CHANGES TO THE PATTERN OF MARINE TRAFFIC IN THE AREA," MR TSUI SAID.

"COXSWAINS OF LOCAL VESSELS SHOULD KEEP PROPER LOOKOUT AND PROCEED AT A SAFE SPEED WHEN NAVIGATING IN THAT AREA," HE SAID.

HE ALSO REMINDED THEM TO NAVIGATE AND GIVE WAY ACCORDING TO THE REGULATIONS FOR PREVENTING COLLISIONS AT SEA.

NEW MARINE TRAFFIC ARRANGEMENTS WILL BE INTRODUCED FROM NEXT MONDAY (NOVEMBER 29) TO COPE WITH THE CHANGES AND TO ENSURE LEAST DISRUPTIONS TO THE REGULAR FERRY SERVICES.

THE PART AFFECTED MOST WILL BE THE AREA BETWEEN BLAKE PIER AND THE GOVERNMENT PIER NEAR THE MACAU FERRY TERMINAL.

MR TSUI POINTED OUT THAT ONE SET OF PUBLIC LANDING STEPS NEAR THE GOVERNMENT PIER HAD ALREADY BEEN CLOSED TO FACILITATE THE RECLAMATION WORKS.

"UPON THE CLOSURE OF BLAKE PIER FOR DEMOLITION, ANOTHER FOUR PUBLIC LANDING STEPS WOULD NOT BE AVAILABLE FOR PUBLIC USE FROM TUESDAY (NOVEMBER 30)," HE ADDED.

EXISTING REGULAR USERS OF BLAKE PIER - THE OPERATORS OF THE TUEN MUN AND DISCOVERY BAY FERRIES - WILL HAVE TO BE RELOCATED.

THE TUEN MUN FERRY WOULD START USING THE CENTRAL HARBOUR SERVICE PIERS FROM NEXT MONDAY AND THE DISCOVERY BAY FERRY WILL START USING THE EAST WING OF THE STAR FERRY EAST PIER AT EDINBURGH PLACE BEGINNING ON SUNDAY (NOVEMBER 28).

THE TSIM SHA TSUI EAST HOVERFERRY, WHICH PREVIOUSLY USED THE EAST WING OF THE STAR FERRY EAST PIER, HAS ALREADY BEEN SHIFTED TO THE QUEEN'S PIER.

IN ABOUT THREE MONTHS' TIME, THE HOVERFERRY WOULD BERTH AT A PONTOON TO BE MOORED AT THE EAST SIDE OF QUEEN'S PIER.

DUE TO LAND CONSTRAINT, IT WILL NOT BE POSSIBLE TO PROVIDE OTHER PUBLIC LANDING STEPS IN THE AREA TO REPLACE THOSE WHICH WILL BE CLOSED OR DESIGNATED FOR USE BY LICENSED OR FRANCHISED FERRY OPERATORS.

MR TSUI SAID THE TEMPORARY LOSS OF PUBLIC LANDING FACILITIES IN CENTRAL TOGETHER WITH RELOCATION OF THE REGULAR FERRY SERVICES WOULD RESULT IN HIGHER CONCENTRATION OF VESSELS IN THE VICINITY OF QUEEN'S PIER AND STAR FERRY PIER.

"BEFORE THE NEW PUBLIC LANDING FACILITIES ARE PROVIDED UPON THE COMPLETION OF NEW PIERS IN CENTRAL IN 18 MONTHS' TIME, COXSWAINS OTHER THAN LICENSED AND FRANCHISED FERRY OPERATORS ARE ADVISED NOT TO USE THE PUBLIC LANDING STEPS AT QUEEN'S PIER SO AS TO EASE CONGESTION," HE SAID.

"THERE WERE OTHER PUBLIC LANDING FACILITIES NEARBY SUCH AS THE PUBLIC LANDING STEPS IN FLEMING ROAD, FENWICK STREET, WESTERN PARKLAND AND NORTH POINT," HE SAID.

THE DEPARTMENT HAS DESIGNATED A SMALL CRAFT HOLDING AREA OFF QUEEN'S PIER. THIS HOLDING AREA CENTRES AROUND NAVAL MOORING BUOY NO. 4 WITH A RADIUS OF 150 METRES.

"SHOULD THEY NEED TO USE QUEEN'S PIER, COXSWAINS ARE ADVISED TO WAIT IN THE SMALL CRAFT HOLDING AREA IF THE PIER IS OCCUPIED OR IF THEIR PASSENGERS ARE NOT READY TO BOARD OR DISEMBARK," MR TSUI SAID.

APART FROM SETTING UP THE SMALL CRAFT HOLDING AREA, THE MARINE DEPARTMENT HAS INTRODUCED OTHER MEASURES FOR SAFE NAVIGATION OF VESSELS IN THE AREA.

THESE MEASURES INCLUDED DISSEMINATION OF INFORMATION ON THE MARINE WORKS AND PRECAUTIONS TO BE TAKEN.

"A LEAFLET PROVIDING USEFUL ADVICE TO COXSWAINS AND A CHART SHOWING THE TRAFFIC ARRANGEMENTS HAVE BEEN PRODUCED," HE SAID.

THE LEAFLETS CAN BE OBTAINED FREE OF CHARGE FROM MARINE DEPARTMENT'S PORT FORMALITIES OFFICE AT HARBOUR BUILDING IN CENTRAL AND THE DEPARTMENT'S DISTRICT OFFICES.

"THE BOUNDARY OF THE WORKS AREAS, THE FERRY ROUTES AND THE POSITION OF THE LIGHT BUOYS AS ADDITIONAL AIDS TO NAVIGATION ARE ALSO PROVIDED," MR TSUI SAID.

- - - - 0 - - - -

PHASING OUT OF CENTRAL-JORDAN ROAD CAR FERRY

* * * * *

THE GOVERNOR IN COUNCIL HAS APPROVED THE PHASED CESSATION OF THE VEHICULAR FERRY SERVICE BETWEEN JORDAN ROAD AND JUBILEE STREET IN CENTRAL, TO ENABLE WORK TO PROCEED ON THE WEST KOWLOON AND CENTRAL RECLAMATIONS.

A GOVERNMENT SPOKESMAN SAID THE SERVICE WILL BE REDUCED IN JANUARY NEXT YEAR WHEN THE FERRY PIER AT JORDON ROAD WILL BE AFFECTED BY WEST KOWLOON RECLAMATION WORKS.

THE VEHICULAR FERRY SERVICE WILL CEASE OPERATION IN JUNE NEXT YEAR WHEN THE VEHICLE HOLDING BASIN IN JUBILEE STREET IN CENTRAL WILL HAVE TO BE CLOSED TO MAKE WAY FOR WORKS ON THE CENTRAL RECLAMATION.

THE EXACT DATES OF THE CESSATION WILL BE ANNOUNCED NEARER THE TIME.

THE SPOKESMAN STRESSED THAT THE PASSENGER SERVICE FROM JORDAN ROAD TO CENTRAL WILL CONTINUE TO BE OPERATED.

THE DECISION WAS TAKEN AFTER A COMPREHENSIVE AND THOROUGH SEARCH FOR ALTERNATIVE SITES TO REPROVISION THE VEHICULAR FERRY SERVICE.

"THE OPTIONS AVAILABLE TO US ARE EITHER NOT PRACTICAL, TOO COSTLY OR NOT SUFFICIENTLY CONVENIENT TO ATTRACT MOTORISTS," THE SPOKESMAN SAID.

CONSIDERATION HAS ALSO BEEN GIVEN TO REPROVISION THE PIERS TO TSUEN WAN AND THE TAMAR BASIN.

THE REPROVISIONING WILL COST MORE THAN \$65 MILLION. THIS IS NOT COST EFFECTIVE BECAUSE THE FACILITIES WOULD, AT BEST, ONLY BE REQUIRED FOR TWO TO THREE YEARS UNTIL THE WESTERN HARBOUR CROSSING, WHICH HAS A CAPACITY OF 180,000 VEHICLES PER DAY, OPENS IN MID-1997.

/MOREOVER, A

MOREOVER, A TSUEN WAN TO CENTRAL SERVICE WOULD NOT BE ATTRACTIVE BECAUSE THE JOURNEY WILL TAKE MORE THAN AN HOUR AND THE FARES WILL BE SUBSTANTIALLY HIGHER.

AT PRESENT, THE CENTRAL TO JORDAN ROAD VEHICULAR SERVICE WHICH HAS A DAILY CAPACITY OF 10,000 VEHICLES IS ONLY USED BY 5,700 VEHICLES EACH DAY.

"WE RECOGNISE THAT WITH THE PHASING OUT OF THE JORDAN ROAD TO CENTRAL VEHICULAR FERRY MOST OF THE AFFECTED VEHICLES WILL USE THE EXISTING CROSS HARBOUR TUNNELS. THE TWO TUNNELS HAVE A COMBINED THROUGHPUT OF 200,000 VEHICLES A DAY.

"THE TRANSPORT DEPARTMENT WILL CAREFULLY MONITOR TRAFFIC AT THE CROSS HARBOUR TUNNELS AND ALL POSSIBLE TRAFFIC MANAGEMENT MEASURES WILL BE TAKEN TO MAINTAIN THE TRAFFIC FLOW.

"AN ALTERNATIVE ROUTE IS ALSO AVAILABLE SINCE THE HONGKONG AND YAUMATI FERRY COMPANY WILL CONTINUE TO RUN THE VEHICULAR FERRY SERVICE BETWEEN KOWLOON CITY AND NORTH POINT," THE SPOKESMAN SAID.

- - - - 0 - - - -

STRAY CATTLE HAZARDS AND NUISANCES REDUCED
* * * * *

TRAFFIC HAZARDS, ENVIRONMENTAL NUISANCES AND HYGIENE PROBLEMS CAUSED BY STRAY CATTLE ALONG SOUTH LANTAU ROAD ON LANTAU ISLAND ARE EXPECTED TO BE REDUCED AFTER A SPECIAL OPERATION TO CLEAR THE ANIMALS THIS (THURSDAY) MORNING.

A TOTAL OF 24 STRAY CATTLE WERE CAUGHT IN THE OPERATION CONDUCTED BY THE AGRICULTURE AND FISHERIES DEPARTMENT (AFD) AND ASSISTED BY POLICE, ISLANDS DISTRICT OFFICE AND MARINE DEPARTMENT.

AFD'S SENIOR VETERINARY OFFICER, DR LIU KWEI-KIN, WHO LED THE OPERATION, SAID IT HAD GONE ON SMOOTHLY AND WOULD HELP TO REDUCE THE NUISANCES.

"THE DEPARTMENT TOOK ACTION FOLLOWING ITS OWN FIELD INVESTIGATIONS AS WELL AS REPORTS RECEIVED BY OTHER GOVERNMENT DEPARTMENTS ABOUT THE PROBLEM.

"THE ANIMALS ARE BELIEVED TO HAVE BEEN WANDERING AROUND VEHICULAR ACCESS ROAD, FALLOW FIELDS OR FARMS ON LANTAU FOR QUITE SOME TIME NOW, APPARENTLY WITHOUT ANY OWNERS TAKING CHARGE OF THEM," HE SAID.

THE OPERATION COVERED MOST PARTS OF SOUTH LANTAU ROAD FROM PUI O TO KEUNG SHAN. MORE THAN 30 AFD STAFF, INCLUDING THREE GOVERNMENT VETERINARIANS, TOOK PART IN THE OPERATION WHICH LASTED MORE THAN NINE HOURS.

/THE CATTLE

THE CATTLE CAUGHT ARE BEING KEPT AT THE SHEK WUI HUI GOVERNMENT KENNELS, PENDING DISPOSAL ARRANGEMENTS UNDER THE POUNDS ORDINANCE. IF THEY ARE NOT CLAIMED, THEY WILL BE SOLD BY AUCTION.

DR LIU REITERATED THAT AFD WOULD CONTINUE TO MONITOR THE PROBLEM ON THE ISLAND AND CONSIDER SIMILAR OPERATIONS AGAIN IF NECESSARY.

- - - - 0 - - - -

APPLICATIONS FOR MINIBUS LICENCES TO CLOSE ON MONDAY

* * * * *

THE TRANSPORT DEPARTMENT REMINDED THOSE INTERESTED IN OPERATING THE 16 NEW GREEN MINIBUS ROUTES IN THE TERRITORY TO SEND IN APPLICATIONS BY NEXT MONDAY (NOVEMBER 29).

A SPOKESMAN FOR THE DEPARTMENT SAID DETAILS OF THE NEW ROUTES WERE GAZETTED ON OCTOBER 29.

APPLICATIONS MUST BE MADE ON THE SPECIFIED FORM ENTITLED "APPLICATION FOR PASSENGER SERVICE LICENCE IN RESPECT OF THE PACKAGES OF PUBLIC LIGHT BUS (SCHEDULED) ROUTES GAZETTED IN OCTOBER 1993".

THE FORMS ARE AVAILABLE FREE OF CHARGE ON REQUEST FROM THE TRANSPORT DEPARTMENT HEADQUARTERS, ITS KOWLOON AND NEW TERRITORIES REGIONAL OFFICES AS WELL AS ITS LICENSING OFFICES IN HONG KONG, KWUN TONG AND SHA TIN.

"COMPLETED APPLICATION FORMS MUST BE RETURNED BY REGISTERED MAIL TO THE TRANSPORT DEPARTMENT HEADQUARTERS ON 41ST FLOOR, IMMIGRATION TOWER, 7 GLOUCESTER ROAD, WAN CHAI, HONG KONG ON OR BEFORE NOVEMBER 29.

"APPLICATIONS BY ANY OTHER MEANS OR LATE APPLICATIONS WILL NOT BE CONSIDERED," HE ADDED.

- - - - 0 - - - -

FINANCE COMMITTEE MEETS TOMORROW

* * * * *

THE FINANCE COMMITTEE WILL HOLD A MEETING AT 2.30 PM TOMORROW (FRIDAY) AT THE LEGISLATIVE COUNCIL CHAMBER.

MEMBERS OF THE PUBLIC ARE WELCOME TO OBSERVE THE PROCEEDINGS FROM THE PUBLIC GALLERY. THEY MAY RESERVE SEATS BY CALLING 869 9492.

- - - - -

ATTENTION NEWS EDITORS:

YOUR REPRESENTATIVES ARE INVITED TO COVER THE MEETING.

ADVANCE COPIES OF THE PAPERS FOR THE MEETING WILL BE AVAILABLE AFTER 2.30 PM TODAY (THURSDAY) IN THE PRESS ROOM OF THE LEGISLATIVE COUNCIL BUILDING, JACKSON ROAD, CENTRAL. PLEASE NOTE THAT THE CONTENTS OF THE PAPERS ARE NOT FOR USE UNTIL THE MEETING IS OVER.

- - - - 0 - - - -

THURSDAY, NOVEMBER 25, 1993

- 14 -

HONG KONG GOVERNMENT EXCHANGE FUND
MONEY MARKET OPERATIONS

* * * * *

	\$ MILLION

OPENING BALANCE IN THE ACCOUNT	2,105
REVERSAL OF LAF	+895
BALANCE AFTER REVERSAL OF LAF	3,000
NET INJECTION/WITHDRAWAL TODAY	NIL
EFFECT OF LAF TODAY	-120
CLOSING BALANCE IN THE ACCOUNT	2,880
LAF RATE 2.00 BID/4.00 OFFER	TWI 113.7 *+0.1* 25.11.93

HONG KONG GOVERNMENT EXCHANGE FUND

EF BILLS

EF NOTES/HONG KONG GOVERNMENT BONDS

TERMS	YIELD	TERM	ISSUE	COUPON	PRICE	YIELD
1 WEEK	3.11 PCT	15 MONTHS	2502	4.75	101.41	3.59
1 MONTH	2.97 PCT	18 MONTHS	2505	3.75	99.87	3.88
3 MONTHS	3.04 PCT	21 MONTHS	2508	4.625	100.95	4.09
6 MONTHS	3.15 PCT	24 MONTHS	2511	4.15	99.87	4.26
12 MONTHS	3.48 PCT	35 MONTHS	3610	4.20	98.80	4.70

TOTAL TURNOVER OF BILLS AND BONDS - 18,849 MN

CLOSED 25 NOVEMBER 1993

- - - - 0 - - - -