

TABLE 1 (Cont'd)

Grade	Zone	Headquarters & Health/Miscellaneous Services	Kowloon Hospital	Prince of Wales Hospital	Princess Margaret Hospital	Queen Elizabeth Hospital	Queen Mary Hospital	Tuen Mun Hospital	Medical Services	Mental Health Service	Total	Strength on 31.3.1988
Senior Dental Technologist/Dental Technologist Dental Technician I/Dental Technician II		3			1	1	1				3	2
Tutor Dental Therapist/Senior Dental Therapist/ Dental Therapist/Student Dental Therapist		53									57	50
*Chief Medical Technologist/Senior Medical Technologist/ Medical Technologist/Medical Laboratory Technician I/ Medical Laboratory Technician II/Student Medical Laboratory Technician		256		94	83	98	12	2	232	8	529	531
#Superintendent Occupational Therapist/Senior Occupational Therapist/Occupational Therapist I/Occupational Therapist II/Occupational Therapy Assistant			18	30	19	20	9		49	144	289	283
*Chief Pharmacist/Senior Pharmacist/Pharmacist/ Chief Dispenser/Senior Dispenser/Dispenser/ Student Dispenser		30	7	49	25	28	27		445	12	623	609
Superintendent Physiotherapist/Senior Physiotherapist/ Physiotherapist I/Physiotherapist II			20	36	21	37	24		95	4	237	221
Senior Physicist/Physicist		4		7		7	3	7			28	27
*Superintendent Radiographer/Senior Radiographer/ Radiographer I/Radiographer II/Student Radiographer		1	9	78	32	100	58	24	51	3	356	346

TABLE 1 (Cont'd)

Grade	Zone	Headquarters & Health/Miscellaneous Services	Kowloon Hospital	Prince of Wales Hospital	Princess Margaret Hospital	Queen Elizabeth Hospital	Queen Mary Hospital	Tuen Mun Hospital	Medical Services	Mental Health Service	Total	Strength on 31.3.1988
Mould Laboratory Technologist/Senior Mould Laboratory Technician/Mould Laboratory Technician/ Student Mould Laboratory Technician				7		9	5	7			28	24
Senior X-ray Assistant/X-ray Assistant X-ray Mechanic				7	1	3	4		34		34	33
*Audiology Technician I/Audiology Technician II Chiropodist I/Chiropodist II				1	2				7		7	7
Senior Clinical Psychologist/Clinical Psychologist Senior Dietitian/Dietitian		4	2	5	4	5	4		2	11	15	14
#Senior Electrical Technician/Electrical Technician #Senior Foreman/Foreman		1	1	13	2	8	5		3	4	29	25
#Principal Hospital Administrator/Chief Hospital Administrator/Senior Hospital Administrator/Hospital Administrator I/Hospital Administrator II		10	1	1	4	13	5		3	3	32	31
#Chief Hospital Foreman/Senior Hospital Foreman/ Hospital Foreman		51	2	4	4	7	6	3	2	8	89	83
		8	5	8	5	5	8	1	13	13	66	66

TABLE 1 (Cont'd)

Zone	Grade	Headquarters & Health/Miscellaneous Services	Kowloon Hospital	Prince of Wales Hospital	Princess Margaret Hospital	Queen Elizabeth Hospital	Queen Mary Hospital	Tuen Mun Hospital	Medical Services	Mental Health Service	Total	Strength on 31.3.1988
	Laundry Manager/Assistant Laundry Manager Linen Production Unit Manager/Linen Production Unit Supervisor	3 5				3 1					6 6	6 6
	Machinist	58									58	50
	Mortuary Supervisor			1	1	2	1		3		8	8
	Mortuary Technician			1	1	1	1		3		7	-
	Orthoptist I/Orthoptist II								8		8	8
	#Senior Optical Technician/Optical Technician								8		8	8
	Photographer I/Photographer II	1		2	1	2	1		3		10	8
	Senior Prosthetist/Prosthetist I/Prosthetist II/ Student Prosthetist		1	12		6	6	5	30		60	56
	#Scientific Officer (Medical)			10	2	5			11		30	29
	Speech Therapist								7		7	7
	Tailor	2									2	1
	Senior Training Officer	1									1	1
	Assistant Transport Supervisor		1				1				2	2
	Computer Operator II								2		2	1

TABLE 1 (Cont'd)

Zone	Grade	Headquarters & Health/Miscellaneous Services	Kowloon Hospital	Prince of Wales Hospital	Princess Margaret Hospital	Queen Elizabeth Hospital	Queen Mary Hospital	Tuen Mun Hospital	Medical Services	Mental Health Service	Total	Strength on 31.3.1988
	*Administrative Officer Staff Grade 'B'/ Administrative Officer Staff Grade 'C'/ Senior Administrative Officer/Administrative Officer	4+2@									4+2@	5
	Chauffeur	1									1	1
	*Principal Executive Officer/Chief Executive Officer/ Senior Executive Officer/Executive Officer I/ Executive Officer II	39+1@				1					40+1@	45
	Senior Chinese Language Officer/Chinese Language Officer I/Chinese Language Officer II	4									4	4
	#*General Grade Staff	816	42	168	123	200	115	4	387	108	1 963	1 983
	Senior Health Inspector/Health Inspector I/ Health Inspector II	11									11	11
	Librarian/Assistant Librarian I	2									2	2
	Senior Statistician/Statistician/Statistical Officer I/ Statistical Officer II/Student Statistical Officer	23		1	1	2	1				28	30
	*Chief Supplies Officer/Senior Supplies Officer/ Supplies Officer/Assistant Supplies Officer/ Supplies Supervisor I/Supplies Supervisor II/ Supplies Assistant	45	6	12	10	11	6		30	12	132	134

TABLE 1 (Cont'd)

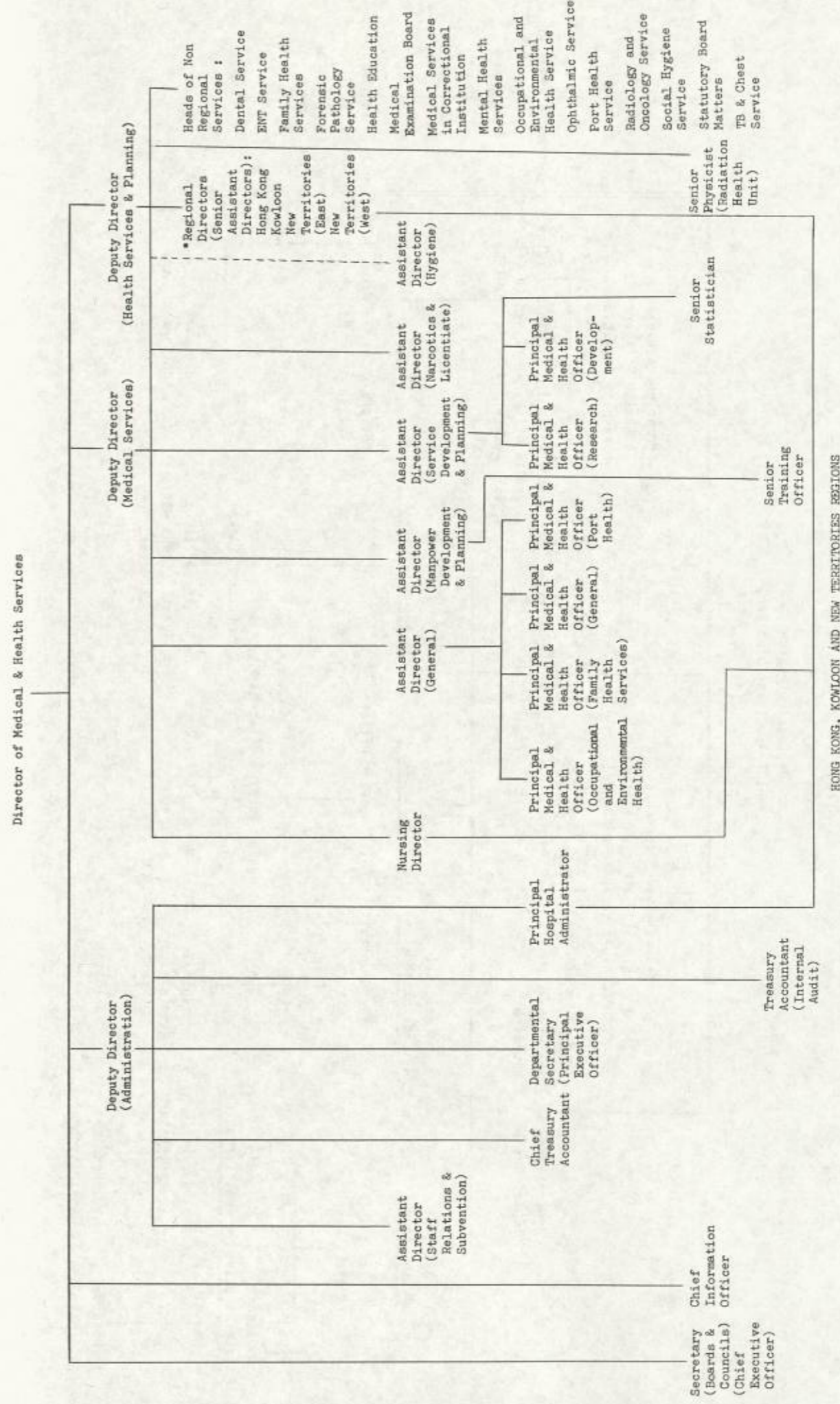
Grade	Zone	Headquarters & Health/Miscellaneous Services	Kowloon Hospital	Prince of Wales Hospital	Princess Margaret Hospital	Queen Elizabeth Hospital	Queen Mary Hospital	Tuen Mun Hospital	Medical Services	Mental Health Service	Total	Strength on 31.3.1988
*Telephone Operator		2	5	7	7	8	7		21	11	68	65
*Chief Treasury Accountant/Senior Treasury Accountant/ Treasury Accountant/Accounting Officer I/ Accounting Officer II		21									21	24
*Minor Staff		924	482	1092	873	1325	880		1465	1245	8286	8008
Total		4171+3@	1099	3486	2758	3997	3360	955	4430	2963	27219+3@	26523

@ Supernumerary posts.

* Excluding (630) supernumerary posts held against other posts.

Excluding (23) supernumerary posts created for short leave replacement.

TABLE 2 ORGANISATION OF MEDICAL & HEALTH DEPARTMENT - POSITION AS AT 31.3.1988



* Organisation of a Region is shown at Table 2(a)

TABLE 4 LEGISLATION OF MEDICAL AND HEALTH IMPORTANCE

APRIL 1987 to MARCH 1988

ORDINANCE

- Dangerous Drugs (Amendment) Ordinance 1987
- Dentists Registration (Amendment) Ordinance - No. 4 of 1988
- Medical Registration (Amendment) Ordinance - No. 3 of 1988
- Midwives Registration (Amendment) Ordinance - No. 6 of 1988
- Nurses Registration (Amendment) Ordinance - No. 5 of 1988
- Pharmacy and Poisons Ordinance, Chapter 138 :
 - Pharmacy and Poisons (Amendment) Regulations 1987
 - Resolution approving the Regulations
 - Pharmacy and Poisons (Amendment) Regulations 1987 (Commencement) Notice 1987
 - Pharmacy and Poisons (Amendment) (No. 2) Regulations 1987
 - Resolution approving the Regulations
 - Pharmacy and Poisons (Amendment) (No. 2) Regulations 1987 (Commencement) Notice 1987
 - Poisons List (Amendment) Regulations 1987
 - Resolution approving the Regulations
 - Poisons List (Amendment) Regulations 1987 (Commencement) Notice 1987
- Pharmacy and Poisons (Amendment) Ordinance 1986, No. 58 of 1986 :
 - Pharmacy and Poisons (Amendment) Ordinance 1986 (Commencement of Sections 5 and 6) Notice 1987
- Pneumoconiosis (Compensation) (Amendment) Ordinance 1987
- Quarantine and Prevention of Disease Ordinance, Chapter 141 :
 - Quarantine and Prevention of Disease (Scale of Charges) (Amendment) Regulations 1987

RULES AND REGULATIONS

- Antibiotics (Amendment) Regulation 1987
- Penalties for Practice of Medicine and Dentistry by Unregistered Persons (Miscellaneous Amendments) Ordinance 1986 (Commencement) Notice 1987

TABLE 5 WORK OF STATUTORY COUNCILS - APRIL 1987 TO MARCH 1988

WORK	COUNCIL	MEDICAL		DENTAL		
		Local List	Overseas List	Dentists		Dental Hygienists
				Local List	Overseas List	
Number on the register on 31.3.1988		5 091	523	1 244	101	67
Number of registrations	Registration (Full) Provisional Registration (Intern) Provisional Registration (Extern)	396 221 *41	28	124	27	-
Number of examinations held	Multiple-Choice Question Paper Oral Written	*1 *1 *2	- - -	1 2 (Practical) 2 (Clinical)	- - -	- - -
Number of candidates examined	Multiple-Choice Question Paper Oral Written	*225 *141 *58	- - -	92 68 (Practical) 18 (Clinical)	- - -	- - -
Number of successful candidates	Multiple-Choice Question Paper Oral Written	*21 *42 *48	- - -	24 11 (Practical) 7 (Clinical)	- - -	- - -
Disciplinary hearings held	No. of hearings No. of persons charged	15 50	- -	1 1	- -	- -
Number of removals from register		103	29	27	18	-

Number of Meetings held : Medical Council - 3 & Related Working Parties - 12
 Dental Council - 4 & Related Working Parties - 19
 Licentiate Committee & its Sub-Committees - 14

* Licentiate Scheme for unregistrable doctors

TABLE 6 WORK OF STATUTORY BOARDS - APRIL 1987 TO MARCH 1988

BOARD WORK	Nursing							Midwives	Pharmacy & Poisons
	Registered			Enrolled		Sick Children	Mental		
	General	Mental	Mentally Sub-normal	General	Mental				
Number on the Register on 31.3.1988	16 387	1 069	8	5 868	486	2	9 182	641	
Number of applications for registration	840	145	-	346	26	-	313	116	
Number of registrations granted	817	145	-	346	26	-	299	58	
Number of examinations held	3	3	-	3	3	-	4	2	
Number of candidates examined	800	167	-	377	27	-	288	72	
Number of successful candidates	764	136	-	332	22	-	285	17	
Disciplinary hearings held	1	-	-	-	-	-	-	-	
No. of hearings	1	-	-	-	-	-	-	-	
No. of persons charged	-	-	-	-	-	-	-	-	
Appeal hearings held	-	-	-	-	-	-	-	4	
No. of appeals	-	-	-	-	-	-	-	4	
Number of removals from register	1	-	-	-	-	-	-	24	
Number of restoration to register	-	-	-	-	-	-	-	2	

Number of Meetings held : Nursing Board - 3 & Related Committee - 104
 Midwives Board - 4
 Pharmacy and Poisons Board - 1
 Poisons Committee - 2

TABLE 6(a) SUPPLEMENTARY MEDICAL PROFESSIONS COUNCIL
 APRIL 1987 TO MARCH 1988

Number of meetings held :-

Supplementary Medical Professions Council	1
Medical Laboratory Technologists Board	3
Physiotherapists Board	3
Radiographers Board	-
Occupational Therapists Board	2
Optometrists Board	7

TABLE 6(b) DETAILS OF LICENCES ISSUED BY THE RADIATION BOARD
 APRIL 1987 TO MARCH 1988

	Irradiating Apparatus		Radioactive Substances
	Possess & Operate	Possess	
Total number of licences remained in force as at 31.3.1988	1 086	99	722
Number of applications for licences	153	-	132
Number of new licences granted	137	136	119
Number of licences cancelled	95	99	102

TABLE 7 ESTIMATED POPULATION BY AGE GROUP AT MID-1987

Age Group	Male	Female	Total
0	38 200	35 400	73 600
1 - 4	172 200	159 800	332 000
5 - 9	221 000	204 800	425 800
10 - 14	227 900	208 500	436 400
15 - 19	232 200	211 700	443 900
20 - 24	282 500	272 300	554 800
25 - 29	319 800	304 500	624 300
30 - 34	280 800	260 700	541 500
35 - 39	236 000	210 300	446 300
40 - 44	153 600	127 700	281 300
45 - 49	137 000	113 500	250 500
50 - 54	147 300	126 400	273 700
55 - 59	136 000	123 200	259 200
60 - 64	112 100	110 800	222 900
65 - 69	83 100	89 100	172 200
70 - 74	58 400	71 100	129 500
75 - 79	30 000	46 500	76 500
80 & over	18 500	50 500	69 000
Total	2 886 600	2 726 800	5 613 400

TABLE 8 VITAL STATISTICS - HONG KONG (Absolute Number)

Year	Population (1)	Registered# Live Births (2)	Registered# Deaths (3)	Late Foetal Deaths (Still Births) (4)	Early Neo Deaths (5)	Late Neo Deaths (6)	Post Neo Deaths (7)	Peri- Natal Deaths (8)=(4)+(5)	Neo- Natal Deaths (9)= (5)+(6)	Infant# Deaths (10)=(5)+ (6)+(7)	Maternal Deaths (11)
1956	2 614 600	96 746	19 295	988	1 303	1 039	3 553	2 291	2 342	5 895	88
1957	2 736 300	97 834	19 365	1 245	1 323	1 007	3 106	2 568	2 330	5 436	105
1958	2 854 100	106 624	20 554	1 297	1 413	1 079	3 294	2 710	2 492	5 786	92
1959	2 967 400	104 579	20 250	1 393	1 335	888	2 831	2 728	2 223	5 054	77
1960	3 075 300	110 667	19 146	1 680	1 309	1 003	2 279	2 989	2 312	4 591	55
1961	3 168 100	108 726(110 884)	18 738(19 325)	1 683	1 226	1 054	1 818	2 909	2 280	4 098(4 106)	50
1962	3 305 200	111 905(112 503)	20 324(20 933)	1 560	1 260	1 109	1 761	2 820	2 369	4 130(4 139)	54
1963	3 420 900	115 263(114 550)	19 748(20 340)	1 633	1 206	972	1 623	2 839	2 178	3 801(3 810)	34
1964	3 504 600	108 519(107 625)	18 113(18 657)	1 485	1 115	684	1 071	2 600	1 799	2 870(2 881)	42
1965	3 597 900	102 195(101 110)	17 621(18 150)	1 363	1 017	537	871	2 380	1 554	2 425(2 435)	34
1966	3 629 900	92 476 (91 832)	18 700(19 261)	1 246	1 011	407	882	2 257	1 418	2 300(2 308)	40
1967	3 722 800	88 171 (88 215)	19 644(20 234)	999	958	440	862	1 957	1 398	2 260(2 268)	27
1968	3 802 700	82 992 (82 685)	19 319(19 444)	832	843	404	664	1 675	1 247	1 911(1 919)	12
1969	3 863 900	79 329 (82 482)	18 730(19 256)	757	810	373	548	1 567	1 183	1 731(1 740)	12
1970	3 959 000	77 465 (79 132)	20 763(19 996)	726	734	252	535	1 460	986	1 521(1 527)	15
1971	4 045 300	76 818 (79 789)	20 253(20 374)	656	716	254	440	1 372	970	1 410(1 415)	11
1972	4 123 600	79 053 (80 344)	21 145(21 397)	736	740	174	466	1 476	914	1 380(1 396)	16
1973	4 241 600	80 147 (82 252)	21 360(21 251)	681	724	157	464	1 405	881	1 345(1 351)	8
1974	4 377 800	81 879 (83 581)	22 050(21 879)	621	717	184	520	1 338	901	1 421(1 407)	13
1975	4 461 600	78 200 (79 790)	21 191(21 597)	565	671	133	369	1 236	804	1 173(1 192)	2
1976	4 518 000	76 342 (78 511)	23 195(22 633)	521	564	127	401	1 085	691	1 092(1 077)	14
1977	4 583 700	78 807 (80 022)	23 459(23 346)	528	565	140	388	1 093	705	1 093(1 081)	13
1978	4 667 500	79 173 (80 957)	22 843(23 830)	431	539	115	280	970	654	934 (956)	5
1979	4 929 700	82 157 (81 975)	26 179(25 125)	389	570	124	398	959	694	1 092(1 011)	7
1980	5 063 100	85 406 (85 290)	25 987(25 008)	483	532	135	341	1 015	667	1 008 (956)	4
1981	5 183 400	87 104 (86 751)	24 978(24 832)	475	471	104	271	946	575	846 (839)	7
1982	5 264 500	86 036 (86 120)	25 460(25 396)	438	482	116	255	920	598	853 (854)	1
1983	5 345 100	82 015 (83 293)	26 485(26 522)	386	465	109	256	851	574	830 (822)	6
1984	5 397 900	77 635 (77 297)	25 580(25 520)	330	393	109	207	723	502	709 (683)	5
1985	5 456 200	76 433 (76 126)	25 325(25 258)	295	296	83	201	591	379	580 (572)	4
1986	5 532 600	72 211 (71 620)	26 030(25 912)	292	303	80	170	595	383	553 (554)	2
1987	5 613 400	70 152 (69 958)	26 959(26 916)	291	257	81	187	548	338	525 (515)	3

Figures in brackets denote adjusted births and deaths for 1961-1968 and known births and deaths for 1969 onwards. Vietnamese refugees are excluded from all known figures.

TABLE 9 VITAL STATISTICS - HONG KONG (Rate)

Year	Crude# Birth Rate (1)	Crude# Death Rate (2)	Late Foetal Mort (3)	Early Neo Mort (4)	Late Neo Mort (5)	Post Neo Mort (6)	Peri- Natal Mort (7)	Neo- Natal Mort (8)=(4)+(5)	Infant # Mort (9)=(4)+(5)+(6)	Maternal Mort (10)
1956	37.0	7.4	10.1	13.5	10.7	36.7	23.4	24.2	60.9	0.90
1957	35.8	7.1	12.6	13.5	10.3	31.7	25.9	23.8	55.6	1.06
1958	37.4	7.2	12.0	13.3	10.1	30.9	25.1	23.4	54.3	0.85
1959	35.2	6.8	13.1	12.8	8.5	27.1	25.7	21.3	48.3	0.73
1960	36.0	6.2	15.0	11.8	9.1	20.6	26.6	20.9	41.5	0.49
1961	34.3 (35.0)	5.9 (6.1)	15.2	11.3	9.7	16.7	26.3	21.0	37.7 (37.0)	0.45
1962	33.9 (34.0)	6.1 (6.3)	13.7	11.3	9.9	15.7	24.9	21.2	36.9 (36.8)	0.48
1963	33.7 (33.5)	5.8 (5.9)	14.0	10.5	8.4	14.1	24.3	18.9	33.0 (33.3)	0.29
1964	31.0 (30.7)	5.2 (5.3)	13.5	10.3	6.3	9.9	23.6	16.6	26.4 (26.8)	0.38
1965	28.4 (28.1)	4.9 (5.0)	13.2	10.0	5.3	8.5	23.0	15.2	23.7 (24.1)	0.33
1966	25.5 (25.3)	5.2 (5.3)	13.3	10.9	4.4	9.5	24.1	15.3	24.9 (25.1)	0.43
1967	23.7 (23.7)	5.3 (5.4)	11.2	10.9	5.0	9.8	21.9	15.9	25.6 (25.7)	0.30
1968	21.8 (21.7)	5.1 (5.1)	9.9	10.2	4.9	8.0	20.0	15.0	23.0 (23.2)	0.14
1969	20.5 (21.3)	4.8 (5.0)	9.5	10.2	4.7	6.9	19.6	14.9	21.8 (21.1)	0.15
1970	19.6 (20.0)	5.2 (5.1)	9.3	9.5	3.3	6.9	18.7	12.7	19.6 (19.3)	0.19
1971	19.0 (19.7)	5.0 (5.0)	8.5	9.3	3.3	5.7	17.7	12.6	18.4 (17.7)	0.14
1972	19.2 (19.5)	5.1 (5.2)	9.2	9.4	2.2	5.9	18.5	11.6	17.5 (17.4)	0.20
1973	18.9 (19.4)	5.0 (5.0)	8.4	9.0	2.0	5.8	17.4	11.0	16.8 (16.4)	0.10
1974	18.7 (19.1)	5.0 (5.0)	7.5	8.8	2.2	6.4	16.2	11.0	17.4 (16.8)	0.16
1975	17.5 (17.9)	4.7 (4.8)	7.2	8.6	1.7	4.7	15.7	10.3	15.0 (14.9)	0.03
1976	16.9 (17.4)	5.1 (5.0)	6.8	7.4	1.7	5.3	14.1	9.1	14.3 (13.7)	0.18
1977	17.2 (17.5)	5.1 (5.1)	6.7	7.2	1.8	4.9	13.8	8.9	13.9 (13.5)	0.16
1978	17.0 (17.3)	4.9 (5.1)	5.4	6.8	1.5	3.5	12.2	8.3	11.8 (11.8)	0.06
1979	16.7 (16.8)	5.3 (5.2)	4.7	6.9	1.5	4.8	11.6	8.4	13.3 (12.3)	0.08
1980	16.9 (17.0)	5.1 (5.0)	5.6	6.2	1.6	4.0	11.8	7.8	11.8 (11.2)	0.05
1981	16.8 (16.8)	4.8 (4.8)	5.4	5.4	1.2	3.1	10.8	6.6	9.7 (9.7)	0.08
1982	16.3 (16.4)	4.8 (4.8)	5.1	5.6	1.3	3.0	10.6	7.0	9.9 (9.9)	0.01
1983	15.3 (15.6)	5.0 (5.0)	4.7	5.7	1.3	3.1	10.3	7.0	10.1 (9.9)	0.07
1984	14.4 (14.4)	4.7 (4.7)	4.2	5.1	1.4	2.7	9.3	6.5	9.1 (8.8)	0.06
1985	14.0 (14.0)	4.6 (4.6)	3.8	3.9	1.1	2.6	7.7	5.0	7.6 (7.5)	0.05
1986	13.1 (13.0)	4.7 (4.7)	4.0	4.2	1.1	2.4	8.2	5.3	7.7 (7.7)	0.03
1987	12.5 (12.5)	4.8 (4.8)	4.1	3.7	1.2	2.7	7.8	4.8	7.5 (7.4)	0.04

Rates : (1) & (2) : per 1 000 population; (4), (5), (6), (8) & (9) : per 1 000 live births;

(3), (7) & (10) : per 1 000 total births

Figures in brackets were calculated by using adjusted births & deaths figures for 1961-1968 and known births & deaths from 1969 onwards. Vietnamese refugees are excluded from all known figures.

TABLE 10 HONG KONG DEATH RATES 1973 TO 1987 (Deaths per 1 000 population)

Rate	Year	1973	1974	1975	1976	1977	1978	1979	1980	1981	1982	1983	1984	1985	1986	1987
Standardised* Death Rate		10.84	10.55	10.19	10.60	10.49	10.18	10.06	9.61	9.09	8.97	9.13	8.52	8.17	8.11	8.06
Crude Death Rate		5.04	5.04	4.75	5.13	5.12	4.89	5.31	5.13	4.82	4.84	4.96	4.74	4.64	4.70	4.80
Age Specific Death Rate	0	16.63	17.37	14.38	14.31	13.78	11.85	13.05	12.04	9.94	9.65	9.62	8.64	7.42	7.28	7.15
	1 - 4	1.07	1.09	0.77	0.84	0.78	0.62	1.01	0.69	0.54	0.53	0.55	0.45	0.39	0.38	0.37
	5 - 9	0.39	0.39	0.38	0.40	0.31	0.23	0.34	0.29	0.22	0.24	0.18	0.24	0.20	0.18	0.16
	10 - 14	0.38	0.36	0.28	0.32	0.33	0.27	0.29	0.29	0.31	0.25	0.24	0.21	0.21	0.23	0.18
	15 - 19	0.64	0.53	0.44	0.56	0.45	0.36	0.50	0.47	0.40	0.39	0.39	0.31	0.31	0.34	0.28
	20 - 24	0.97	0.94	0.73	0.79	0.71	0.60	0.86	0.81	0.59	0.57	0.56	0.49	0.43	0.44	0.40
	25 - 29	1.36	1.16	0.89	1.00	0.99	0.76	1.11	1.00	0.80	0.72	0.61	0.60	0.58	0.50	0.52
	30 - 34	1.65	1.71	1.22	1.57	1.15	1.09	1.28	1.25	1.01	0.92	0.78	0.80	0.72	0.75	0.71
	35 - 39	2.01	1.78	1.58	1.81	1.84	1.53	1.71	1.64	1.39	1.30	1.18	1.00	1.05	1.08	0.98
	40 - 44	3.19	3.06	2.85	2.83	2.75	2.19	2.70	2.37	2.27	2.36	2.09	2.02	1.82	1.82	1.49
	45 - 49	4.63	4.52	4.08	4.56	4.24	3.86	4.32	4.08	3.79	3.65	3.28	3.26	3.10	2.88	3.01
	50 - 54	7.85	7.23	6.71	6.99	6.36	6.55	6.58	6.19	5.87	6.02	5.88	5.41	5.40	5.21	5.06
	55 - 59	11.28	10.84	10.75	10.77	10.59	10.08	10.74	10.61	9.49	9.07	9.18	8.50	8.41	7.78	7.97
	60 - 64	19.59	18.43	16.85	17.79	17.63	15.59	16.41	15.24	14.68	15.07	15.44	14.31	13.28	13.03	12.42
	65 - 69	26.32	26.21	25.57	27.62	27.26	25.64	26.56	25.28	23.38	22.33	22.58	21.54	20.84	20.87	20.78
	70 - 74	38.49	38.10	35.82	39.30	37.55	37.10	37.79	35.85	34.11	34.65	36.82	34.46	32.54	31.90	31.70
	75 - 79	53.38	53.13	53.33	59.98	56.94	52.71	55.47	53.10	51.04	49.10	48.07	48.49	47.05	49.72	49.77
	80+	104.11	102.57	98.59	104.01	108.19	102.49	103.98	101.00	93.24	93.45	97.74	87.45	83.36	81.96	83.75

*Basing on population figures for England and Wales 1980 (Reference : United Nations Demographic Year-Book 1981)

TABLE 11 MAJOR CAUSES OF INFANT DEATHS 1983 TO 1987

Disease Group	Detailed List No. 9th Revision (1975)	1983	1984	1985	1986	1987
Meningitis	320,322	8	1	4	4	2
Bronchitis	466, 490-491	3	-	-	-	3
Viral pneumonia	480	1	-	1	-	-
Pneumococcal pneumonia	481	-	-	-	-	-
Other bacterial pneumonia	482	-	-	-	-	1
Pneumonia due to other specified organism	483	-	-	-	-	-
Bronchopneumonia, organism unspecified	485	50	35	22	10	10
Pneumonia, organism specified	486	21	14	11	5	7
Gastroenteritis, colitis & other diarrheal disease	558, 009	1	-	-	4	-
Congenital anomalies	740-759	254	236	203	205	218
Obstetric complications & birth trauma	761-763, 767	6	2	3	-	-
Intrauterine hypoxia and birth asphyxia	768	73	65	50	47	35
Respiratory distress syndrome	769	107	95	49	87	70
Other respiratory conditions of fetus and newborn	770	71	56	39	20	20
Slow fetal growth and fetal malnutrition	764	-	-	-	-	-
Disorders relating to short gestation and unspecified low birthweight	765	76	43	66	52	42

TABLE 11 (Cont'd)

Disease Group	Detailed List No. 9th Revision (1975)	1983	1984	1985	1986	1987
Fetus or newborn affected by maternal conditions which may be unrelated to present pregnancy	760	-	-	-	-	1
Disorders relating to long gestation and high birthweight	766	-	-	-	-	-
Infections specific to perinatal period	771	20	17	19	23	7
Fetal and neonatal haemorrhage	772	22	28	11	8	19
Haemolytic disease of fetus or newborn due to isoimmunization and other perinatal jaundice	773-774	6	5	2	1	3
Endocrine and metabolic disturbances specific to the fetus and newborn	775	-	1	5	2	1
Haematological disorders of fetus and newborn	776	5	6	4	2	2
Perinatal disorders of digestive system	777	9	9	5	6	8
Conditions involving the integument and temperature regulation of fetus and newborn	778	29	28	24	34	29
Other and ill-defined conditions originating in the perinatal period	779	-	-	-	-	-
Others	Residues of 001-999	68	68	62	43	47
All Causes	001-999	830	709	580	553	525

TABLE 12 NEONATAL AND POST NEONATAL DEATHS BY CAUSE 1983 to 1987

Disease Group	Detailed List No. 9th Revision	1983	1984	1985	1986	1987
<u>Neonatal Deaths (Birth - under 4 weeks)</u>						
All causes	001-999	574	502	379	383	338
Congenital abnormalities	740-759	151	164	120	118	131
Short gestation or unspecified low birthweight and respiratory distress syndrome	765, 769	173	132	104	130	97
Asphyxia and trauma during labour	767-768	76	67	51	43	32
Other specific perinatal disorders (e.g. infections, blood group incompatibilities etc)	760-764, 766, 773-779	48	45	37	43	42
All other causes	Residue of 001-999	126	94	67	49	36
<u>Post Neonatal Deaths (4 weeks - under 1 year)</u>						
All causes	001-999	256	207	201	170	187
Determined in the 'Perinatal Period':						
Congenital abnormalities	740-759	103	72	83	87	87
Short gestation or unspecified low birthweight and respiratory distress syndrome	765, 769	10	6	11	9	15
Birth trauma, asphyxia; and intra-uterine hypoxia	767-768	2	-	-	4	3
Other perinatal disorder (e.g. infections, haemolytic disease etc)	760-764, 766, 770-779	6	19	15	11	15
Acquired after Birth:						
Neoplasms	140-239	3	3	5	1	1
Sudden unexpected death	798	6	3	4	5	6
Injury and Poisoning	800-999	5	16	11	5	4
Other acquired diseases	001-139, 240-739, 780-797, 799	121	88	72	48	56

TABLE 13 MAJOR CAUSES OF MATERNAL DEATHS 1961, 1977 AND 1983 TO 1987

Detailed list No. 9th (1975) Revision	Pregnancy with abortive outcome other than spontaneous or legally induced abortion	Toxaemia of pregnancy	Haemorrhage of pregnancy & childbirth	Major puerperal infection	Ectopic pregnancy	Total	
						Others	Remainder of 630-676
Year	630-639	642,643	640, 641 & 666	670	633		
1961	4	10	17	2	3	14	50
1977	3	1	6	-	1	2	13
1983	-	2	2	-	-	2	6
1984	1	-	1	-	3	-	5
1985	-	2	1	-	-	1	4
1986	-	-	2	-	-	-	2
1987	-	-	1	-	-	2	3

TABLE 14 PROPORTIONATE MORTALITY BY DISEASE GROUP 1961, 1977 AND 1983 TO 1987
(As Percentage of Total Deaths)

Disease Group	Detailed List No. 9th Revision	1961	1977	1983	1984	1985	1986	1987
Infective and parasitic Neoplasms	001 - 139	16.2	3.2	3.0	3.0	3.0	3.0	3.1
Endocrine, nutritional, metabolic, immunity disorders and blood disorders	140 - 239	12.3	24.1	27.3	28.8	29.8	31.0	30.7
Nervous system, sense organs and mental disorders	240 - 289	0.9	1.6	1.0	1.1	1.1	1.1	1.0
Circulatory system	290 - 389	0.8@	0.9	0.9	0.7	0.8	0.7	0.9
Respiratory system	390 - 459	18.2	28.7	29.3	29.1	29.2	28.9	29.2
Digestive system	460 - 519	16.3	15.4	16.9	16.5	16.3	15.8	16.3
Genitourinary system	520 - 579	7.7	4.8	4.3	4.3	4.3	4.1	4.0
Pregnancy, childbirth and puerperium	580 - 629	2.0	3.5	4.0	4.3	4.4	4.6	4.5
Skin, subcutaneous tissue and musculo-skeletal system	630 - 676	0.3	0.1	+	+	+	+	+
Congenital anomalies and conditions originating in the perinatal period	680 - 739	0.2	0.3	0.2	0.2	0.3	0.3	0.2
Symptoms, signs and ill-defined conditions	740 - 779	8.8	3.7	2.8	2.5	2.0	2.0	1.8
Injury and poisoning	780 - 799	10.4	6.2	3.9	3.3	2.5	2.4	2.4
All causes	800 - 999	5.9	7.5	6.4	6.2	6.3	6.1	5.9
	001 - 999	100.0	100.0	100.0	100.0	100.0	100.0	100.0

@ Excluding Cerebrovascular Disease (formerly Vascular Lesion Affecting Central Nervous System
under the Nervous System and Sense Organs) : 7.5% in 1961
+ Denote less than 0.05.

TABLE 15 THE TEN LEADING CAUSES OF DEATH BY AGE AND SEX 1987

Rank	Cause of Death	Detailed List No. 9th Revision	Sex	Age Group							Unknown
				All ages	0	1-4	5-14	15-44	45-64	65+	
	All causes	001-999	M F X T	14 999 11 950 10 26 959	286 238 1 525	68 54 - 122	85 62 1 148	1 240 669 - 1 909	4 759 2 209 - 6 968	8 550 8 715 - 17 265	11 3 8 22
1	Malignant neoplasms	140-208	M F T	5 075 3 183 8 258	1 - 1	15 10 25	20 15 35	372 249 621	2 151 1 017 3 168	2 515 1 892 4 407	1 - 1
2	Heart diseases, including hypertensive heart disease	390-429	M F T	2 390 2 125 4 515	1 1 2	3 1 4	3 2 5	97 41 138	644 327 971	1 641 1 753 3 394	1 - 1
3	Cerebrovascular disease	430-438	M F T	1 469 1 667 3 136	- - -	- - -	2 2 4	50 29 79	435 255 690	978 1 381 2 359	4 - 4
4	Pneumonia, all forms	480-486	M F T	881 800 1 681	8 10 18	6 6 12	2 5 7	31 19 50	177 47 224	657 713 1 370	- - -
5	Injury and poisoning	800-999	M F T	994 590 1 584	5 2 7	18 10 28	32 19 51	452 193 645	261 121 382	225 244 469	1 1 2
6	Nephritis, nephrotic syndrome and nephrosis	580-589	M F T	459 531 990	- - -	- 3 3	2 3 5	19 18 37	135 116 251	302 391 693	1 - 1

TABLE 15 (Cont'd)

Rank	Cause of Death	Detailed List No. 9th Revision	Sex	Age Group							
				All ages	0	1-4	5-14	15-44	45-64	65+	Unknown
7	Bronchitis, chronic and unspecified, emphysema & asthma	490-493	M	346	-	-	1	20	109	215	1
			F	187	-	-	1	9	25	152	-
			T	533	-	-	2	29	134	367	1
8	Tuberculosis (including late effects of tuberculosis)	010-018, 137	M	319	-	-	-	12	109	197	1
			F	86	-	-	1	5	16	64	-
			T	405	-	-	1	17	125	261	1
9	Septicaemia	038	M	173	4	3	3	11	31	121	-
			F	205	1	2	-	12	18	172	-
			T	378	5	5	3	23	49	293	-
10	Chronic liver diseases and cirrhosis	571	M	229	-	-	-	23	127	79	-
			F	81	-	-	-	1	38	42	-
			T	310	-	-	-	24	165	121	-
	Certain conditions originating in the perinatal period	760-779	M	126	126	-	-	-	-	-	-
			F	110	110	-	-	-	-	-	-
			X	1	1	-	-	-	-	-	-
	Diabetes mellitus	250	T	237	237	-	-	-	-	-	-
			M	93	-	-	-	4	23	66	-
			F	139	-	-	1	1	19	118	-
	All other causes	Residue of 001-999	T	232	-	-	1	5	42	184	-
			M	2 445	141	23	20	149	557	1 554	1
			F	2 246	114	22	13	92	210	1 793	2
			X	9	-	-	1	-	-	8	
			T	4 700	255	45	34	241	767	3 347	11

Note : X indicates unknown sex.

TABLE 15(a) SUPPLEMENTARY CLASSIFICATION OF EXTERNAL CAUSES OF INJURY AND POISONING 1987

External Cause of Death	Detailed List No. 9th Revision	Sex	Age Group							
			All ages	0	1-4	5-14	15-44	45-64	65+	Unknown
All accidents, poisonings and violence	E800-E999	M	1 004	5	18	32	457	262	229	1
		F	597	3	10	19	193	123	248	1
		T	1 601	8	28	51	650	385	477	2
Transport accidents	E800-E848	M	185	-	-	16	77	44	48	-
		F	115	-	1	8	17	26	63	-
		T	300	-	1	24	94	70	111	-
Accidental poisonings	E850-E869	M	21	-	-	1	15	3	2	-
		F	7	-	-	-	4	2	1	-
		T	28	-	-	1	19	5	3	-
Other accidents, misadventures & adverse effect	E870-E949	M	328	4	17	13	132	92	70	-
		F	129	2	9	7	21	18	71	1
		T	457	6	26	20	153	110	141	1
Suicide and self-inflicted injury	E950-E959	M	354	-	-	-	166	100	88	-
		F	270	-	-	-	117	60	93	-
		T	624	-	-	-	283	160	181	-
Homicide and injury purposely inflicted by other persons	E960-E969	M	39	-	1	2	25	6	5	-
		F	29	-	-	2	20	3	4	-
		T	68	-	1	4	45	9	9	-
Other violence	E970-E999	M	77	1	-	-	42	17	16	1
		F	47	1	-	2	14	14	16	-
		T	124	2	-	2	56	31	32	1

TABLE 16 LEADING CAUSES OF DEATH 1961, 1977 AND 1987 (Ranking According to 1987 Data)

Cause of Death	Number of Deaths			Percentage of Deaths from all causes			Rate per 100 000 population		
	1961	1977	1987	1961	1977	1987	1961	1977	1987
<u>All ages</u>									
All causes	18 738	23 459	26 959	100.0	100.0	100.0	591.5	511.8	480.3
1. Malignant neoplasms	2 280	5 652	8 258	12.2	24.1	30.6	72.0	123.3	147.1
2. Heart diseases, including hypertensive heart disease	1 866	4 135	4 515	9.9	17.6	16.8	58.9	90.2	80.4
3. Cerebrovascular disease	1 401	2 422	3 136	7.5	10.3	11.6	44.2	52.8	55.9
4. Pneumonia, all forms	2 665	2 312	1 681	14.2	9.9	6.2	84.1	50.4	29.9
5. Injury and poisoning	1 100	1 767	1 584	5.9	7.5	5.9	34.7	38.5	28.2
All other causes	9 426	7 171	7 785	50.3	30.6	28.9	297.6	156.4	138.7
<u>0 years</u>									
All causes	4 098	1 093	525	100.0	100.0	100.0	3 840.7	1 378.1	715.1
1. Congenital anomalies	157	328	218	3.8	30.0	41.5	147.1	413.6	296.4
2. Hypoxia, birth asphyxia & other respiratory conditions	142	148	125	3.4	13.5	23.8	133.1	186.6	169.9
3. Haemolytic disease of fetus or newborn, perinatal jaundice & other causes of perinatal morbidity	204	92	69	5.0	8.4	13.2	191.2	116.0	93.8
4. Immaturity	1 142	193	42	27.9	17.7	8.0	1 070.3	243.3	57.1
5. Pneumonia, all forms	1 166	114	18	28.5	10.4	3.4	1 092.8	143.7	24.5
All other causes	1 287	218	53	31.4	20.0	10.1	1 206.2	274.9	73.4

TABLE 16 (Cont'd)

Cause of Death	Number of Deaths			Percentage of Deaths from all causes			Rate per 100 000 population		
	1961	1977	1987	1961	1977	1987	1961	1977	1987
<u>1-4 years</u>									
All causes	1 805	249	122	100.0	100.0	100.0	427.5	78.1	36.7
1. Injury and poisoning	107	73	28	5.9	29.3	22.9	25.3	22.9	8.4
2. Malignant neoplasms	18	24	25	1.0	9.6	20.5	4.3	7.5	7.5
3. Congenital anomalies	14	38	18	0.8	15.3	14.8	3.3	11.9	5.4
4. Diseases of nervous system	18	14	15	1.0	5.6	12.3	4.3	4.4	4.5
5. Pneumonia, all forms	603	53	12	33.4	21.3	9.8	142.8	16.6	3.6
All other causes	1 045	47	24	57.9	18.9	19.7	247.5	14.7	7.2
<u>5-14 years</u>									
All causes	587	297	148	100.0	100.0	100.0	77.7	31.9	17.2
1. Injury and poisoning	177	111	51	30.2	37.4	34.5	23.4	11.9	5.9
2. Malignant neoplasms	40	56	35	6.8	18.8	23.6	5.3	6.0	4.1
3. Diseases of nervous system	29	16	15	5.0	5.4	10.1	3.8	1.7	1.7
4. Pneumonia, all forms	83	20	7	14.1	6.7	4.7	11.0	2.1	0.8
5. Heart disease, including hypertensive heart disease	33	18	5	5.6	6.1	3.4	4.4	1.9	0.6
All other causes	225	76	35	38.3	25.6	23.7	29.8	8.2	4.1

TABLE 16 (Cont'd)

Cause of Death	Number of Deaths			Percentage of Deaths from all causes			Rate per 100 000 population		
	1961	1977	1987	1961	1977	1987	1961	1977	1987
	<u>15-44 years</u>								
All causes	2 665	2 365	1 909	100.0	100.0	100.0	201.6	110.5	66.0
1. Injury and poisoning	465	745	645	17.4	31.5	33.8	35.2	34.8	22.3
2. Malignant neoplasms	512	657	621	19.2	27.8	32.5	38.7	30.7	21.5
3. Heart diseases, including hypertensive heart disease	246	204	138	9.2	8.6	7.2	18.6	9.5	4.8
4. Cerebrovascular Diseases	74	60	79	2.8	2.6	4.2	5.6	2.8	2.7
5. Pneumonia, all forms	100	107	50	3.8	4.5	2.6	7.6	5.0	1.7
All other causes	1 268	592	376	47.6	25.0	19.7	95.9	27.7	13.0
<u>45-64 years</u>									
All causes	5 041	7 511	6 968	100.0	100.0	100.0	1 089.9	881.2	692.4
1. Malignant neoplasms	1 204	2 732	3 168	23.9	36.4	45.5	260.3	320.5	314.8
2. Heart diseases, including hypertensive heart disease	762	1 328	971	15.1	17.7	13.9	164.8	155.8	96.5
3. Cerebrovascular disease	569	754	690	11.3	10.0	9.9	123.0	88.5	68.6
4. Injury and poisoning	216	484	382	4.3	6.4	5.5	46.7	56.8	38.0
5. Nephritis, nephrotic syndrome and nephrosis	302	141	251	6.0	1.9	3.6	65.3	16.5	24.9
All other causes	1 988	2 072	1 506	39.4	27.6	21.6	429.8	243.1	149.7

TABLE 16 (Cont'd)

Cause of Death	Number of Deaths			Percentage of Deaths from all causes			Rate per 100 000 population		
	1961	1977	1987	1961	1977	1987	1961	1977	1987
	<u>65-years and over</u>								
All causes	4 524	11 926	17 265	100.0	100.0	100.0	4 519.5	4 566.4	3 859.2
1. Malignant neoplasms	503	2 179	4 407	11.1	18.3	25.5	502.5	834.3	985.1
2. Heart diseases, including hypertensive heart disease	817	2 583	3 394	18.1	21.7	19.7	816.2	989.0	758.7
3. Cerebrovascular disease	747	1 600	2 359	16.5	13.4	13.7	746.3	612.6	527.3
4. Pneumonia, all forms	435	1 580	1 370	9.6	13.2	7.9	434.6	605.0	306.2
5. Nephritis, nephrotic syndrome and nephrosis	88	151	693	1.9	1.3	4.0	87.9	57.8	154.9
All other causes	1 934	3 833	5 042	42.8	32.1	29.2	1 932.1	1 467.6	1 127.0

TABLE 17 NUMBER OF CANCER DEATHS BY AGE AND SEX 1987

T-List	Detailed List Number 9th Revision	Cause Group	Sex	All Ages	0-9	10-	20-	30-	35-	40-	45-	50-	55-	60-	65-	70-	75+	Unk
T080 (part)	147	Malignant neoplasm of nasopharynx	M	329	-	-	14	12	22	24	34	58	53	41	39	19	13	-
			F	113	-	-	2	7	8	8	14	13	15	14	9	11	12	-
T090	150	Malignant neoplasm of oesophagus	M	310	-	-	-	-	2	3	12	39	61	63	51	38	41	-
			F	61	-	-	-	-	-	1	1	3	9	8	6	15	18	-
T091	151	Malignant neoplasm of stomach	M	316	-	-	2	3	3	6	17	18	37	56	60	51	63	-
			F	228	-	-	7	10	7	7	4	13	15	26	29	34	76	-
T093	153	Malignant neoplasm of colon	M	267	-	-	2	2	5	-	8	20	26	40	39	54	71	-
			F	243	-	-	2	4	6	4	8	14	20	30	31	37	87	-
T094	154	Malignant neoplasm of rectum, rectosigmoid junction and anus	M	145	-	1	2	1	3	2	11	10	14	13	28	22	38	-
			F	142	-	-	3	2	-	3	4	13	12	12	22	20	51	-
T095	155	Malignant neoplasm of liver and intrahepatic bile ducts	M	820	1	1	11	19	27	35	63	93	129	112	120	101	107	1
			F	234	1	1	-	6	4	1	11	21	28	32	37	28	64	-
T096	157	Malignant neoplasm of pancreas	M	120	-	-	-	1	1	1	5	13	18	17	28	20	16	-
			F	80	-	-	-	-	-	-	1	3	6	11	11	11	37	-
T100	161	Malignant neoplasm of larynx	M	81	-	-	-	-	-	3	3	3	9	17	17	15	14	-
			F	4	-	-	-	-	-	-	-	-	-	-	-	2	2	-
T101	162	Malignant neoplasm of trachea, bronchus and lung	M	1609	-	-	1	7	12	18	55	120	204	279	318	313	282	-
			F	856	-	-	4	2	12	11	17	38	51	107	141	170	303	-

TABLE 17 (Cont'd)

T-List	Detailed List Number 9th Revision	Cause Group	Sex	All Ages	0-9	10-	20-	30-	35-	40-	45-	50-	55-	60-	65-	70-	75+	Unk
T110	170	Malignant neoplasm of bone and articular cartilage	M	26	-	5	2	-	-	1	-	1	3	5	3	2	4	-
			F	23	-	2	3	-	4	1	1	1	2	1	4	-	4	-
T112	172	Malignant melanoma of skin	M	11	-	-	1	1	-	-	-	1	1	4	1	1	1	-
			F	4	-	-	-	-	-	-	-	-	-	-	1	-	3	-
T113	173	Other malignant neoplasm of skin	M	6	-	-	-	-	-	-	-	-	2	-	2	1	1	-
			F	2	-	-	-	-	-	-	-	-	-	-	-	-	2	-
T114	174	Malignant neoplasm of female breast	F	262	-	-	2	4	14	12	22	21	39	41	32	24	51	-
T120	180	Malignant neoplasm of cervix uteri	F	129	-	-	-	6	1	4	15	17	18	22	16	12	18	-
T122	179, 182	Malignant neoplasm of uterus, other and unspecified	F	42	-	1	-	1	1	-	2	6	5	6	8	3	9	-
T123	183	Malignant neoplasm of ovary and other uterine adnexa	F	87	1	-	2	-	4	5	4	7	13	13	12	12	14	-
T124	185	Malignant neoplasm of prostate	M	77	-	-	-	-	-	-	-	3	4	4	10	15	41	-
T125	186	Malignant neoplasm of testis	M	2	-	-	1	-	-	-	-	1	-	-	-	-	-	-

TABLE 17 (Cont'd)

T-List	Detailed List Number 9th Revision	Cause Group	Sex	All Ages	0-9	10-	20-	30-	35-	40-	45-	50-	55-	60-	65-	70-	75+	Unk
T126	188	Malignant neoplasm of bladder	M	125	-	-	-	-	-	-	3	1	11	19	20	31	40	-
T131 (part)	193	Malignant neoplasm of thyroid gland	M F	38	-	-	-	-	-	-	-	-	-	4	7	10	17	-
T140	201	Hodgkin's disease	M F	8	-	-	-	-	-	-	1	-	2	1	1	1	2	-
T141 (part)	200, 202	Non-Hodgkin's lymphoma	M F	21	1	-	-	-	-	-	1	-	1	3	3	9	3	-
T141 (part)	203	Multiple myeloma and immunoproliferative neoplasms	M F	2	-	-	-	-	-	-	-	1	-	1	-	-	-	-
T142	204-208	Leukaemia	M F	3	-	-	-	-	-	1	-	1	-	-	-	-	1	-
	140-146, 148-149, 152, 156, 158-160, 163-165, 171, 175, 181, 184, 187, 189-192, 194-199		M F	109	2	4	4	1	4	4	5	11	12	15	17	11	19	-
			M F	68	1	-	2	2	2	3	1	1	6	9	11	11	19	-
			M F	31	-	-	-	1	-	2	-	3	1	3	5	10	6	-
			M F	26	-	-	-	-	-	-	-	-	3	3	5	2	13	-
			M F	111	11	14	13	9	8	3	4	7	5	6	9	5	17	-
			M F	77	4	6	6	5	3	1	1	8	4	6	6	11	16	-
			M F	570	11	7	6	11	15	19	28	60	74	78	86	90	85	-
			M F	440	11	5	10	9	3	8	13	23	42	57	69	64	126	-
			M F T	8258	44	48	102	126	171	191	369	665	955	1179	1314	1286	1807	1
			M F	5075	25	33	59	68	102	121	249	462	666	774	854	800	861	1
			M F	3183	19	15	43	58	69	70	120	203	289	405	460	486	946	-
			T	8258	44	48	102	126	171	191	369	665	955	1179	1314	1286	1807	1

TABLE 18 MAIN CAUSES OF DEATH FROM CANCER IN HONG KONG 1978 TO 1987

CAUSE OF DEATH Detailed List Number 9th Revision	Sex	1978#		1979		1980		1981		1982		1983		1984		1985		1986		1987	
		D	R	D	R	D	R	D	R	D	R	D	R	D	R	D	R	D	R	D	R
ALL FORMS OF CANCER (140-208)	M	3597	150.4	3774	148.2	4001	152.2	4025	149.1	4214	154.1	4539	163.8	4535	162.4	4590	163.0	4921	172.7	5075	175.8
	F	2381	104.7	2429	101.9	2429	99.8	2561	103.1	2596	102.6	2687	104.4	2812	107.9	2945	111.5	3133	116.8	3183	116.7
Malignant neoplasm of nasopharynx (147)	M	302	12.6	360	14.1	349	13.3	360	13.3	361	13.2	370	13.4	346	12.4	316	11.2	324	11.4	329	11.4
	F	120	5.3	126	5.3	118	4.8	109	4.4	121	4.8	102	4.0	103	4.0	94	3.6	114	4.2	113	4.1
Malignant neoplasm of oesophagus (150)	M	227	9.5	264	10.4	287	10.9	265	9.8	272	9.9	281	10.1	278	10.0	319	11.3	316	11.1	310	10.7
	F	64	2.8	66	2.8	61	2.5	54	2.2	61	2.4	78	3.0	60	2.3	65	2.5	59	2.2	61	2.2
Malignant neoplasm of stomach (151)	M	274	11.5	286	11.2	295	11.2	278	10.3	290	10.6	309	11.2	284	10.2	265	9.4	325	11.4	316	10.9
	F	177	7.8	167	7.0	167	6.9	188	7.6	172	6.8	212	8.2	164	6.3	184	7.0	227	8.5	228	8.4
Malignant neoplasm of colon (153)	M	150	6.3	136	5.3	147	5.6	171	6.3	187	6.8	217	7.8	229	8.2	217	7.7	231	8.1	267	9.2
	F	143	6.3	154	6.5	161	6.6	163	6.6	183	7.2	184	7.1	207	7.9	231	8.7	213	7.9	243	8.9
Malignant neoplasm of rectum, rectosigmoid junction and anus (154)	M	124	5.2	118	4.6	103	3.9	127	4.7	107	3.9	146	5.3	160	5.7	140	5.0	155	5.4	145	5.0
	F	81	3.6	107	4.5	93	3.8	84	3.4	108	4.3	108	4.2	114	4.4	104	3.9	111	4.1	142	5.2
Malignant neoplasm of liver and intrahepatic bile ducts (155)	M	650	27.2	691	27.1	689	26.2	731	27.1	689	25.2	783	28.3	780	27.9	740	26.3	830	29.1	820	28.4
	F	195	8.6	178	7.5	204	8.4	201	8.1	198	7.8	232	9.0	212	8.1	229	8.7	224	8.3	234	8.6
Malignant neoplasm of trachea, bronchus and lung (162)	M	999	41.8	1062	41.7	1223	46.5	1200	44.4	1263	46.2	1370	49.4	1393	49.9	1457	51.7	1537	53.9	1609	55.7
	F	562	24.7	600	25.2	583	24.0	626	25.2	699	27.6	632	24.6	735	28.2	766	29.0	811	30.2	856	31.4
Malignant neoplasm of breast (174 & 175)	M	-	-	1	*	1	*	-	-	2	0.1	1	*	-	-	4	0.1	5	0.2	2	0.1
	F	210	9.2	205	8.6	190	7.8	227	9.1	202	8.0	219	8.5	250	9.6	262	9.9	243	9.1	262	9.6
Malignant neoplasm of cervix uteri (180)	F	124	5.5	146	6.1	141	5.8	155	6.2	108	4.3	140	5.4	127	4.9	141	5.3	150	5.6	129	4.7

Data regrouped according to ICD 9th Revision (1975).

* Denote less than 0.05.

D - No. of Deaths.

R - Mortality Rate per 100 000 population.

TABLE 19 NEW CASES OF CANCER NOTIFIED TO THE CANCER REGISTRY BY AGE AND SEX 1984

T-List	Detailed List Number 9th Revision	Cause Group	Sex	All Ages	0-9	10-	20-	30-	35-	40-	45-	50-	55-	60-	65-	70-	75+	Unk
T080 (part)	147	Malignant neoplasm of nasopharynx	M F	758 274	- -	5 1	29 14	51 33	80 28	81 33	106 36	152 29	92 33	65 20	45 23	35 15	11 9	6 -
T090	150	Malignant neoplasm of oesophagus	M F	462 103	- -	- -	- -	2 -	5 1	13 1	43 -	58 6	73 12	107 17	62 18	56 22	38 25	5 1
T091	151	Malignant neoplasm of stomach	M F	511 307	2 -	- -	4 7	6 11	10 8	17 3	28 20	39 25	66 28	82 29	85 51	102 51	67 72	3 2
T093	153	Malignant neoplasm of colon	M F	472 445	- -	3 -	14 6	9 12	14 12	16 10	28 14	45 29	60 49	70 68	61 62	67 74	83 107	2 2
T094	154	Malignant neoplasm of rectum, rectosigmoid junction and anus	M F	346 229	- -	1 -	8 1	9 6	9 3	17 5	21 14	41 18	45 26	60 25	43 27	56 45	33 59	3 -
T095	155	Malignant neoplasm of liver and intrahepatic bile ducts	M F	799 201	5 2	2 -	22 5	28 2	28 4	65 6	83 7	104 14	128 24	125 21	92 28	75 35	41 52	1 1
T096	157	Malignant neoplasm of pancreas	M F	84 62	- -	- -	3 2	1 1	1 -	- 3	2 -	8 5	10 6	12 11	20 13	16 9	11 12	- -
T100	161	Malignant neoplasm of larynx	M F	222 33	- -	- -	- 1	1 -	1 3	4 -	12 1	25 2	34 3	46 4	45 9	29 5	23 5	2 -
T101	162	Malignant neoplasm of trachea, bronchus and lung	M F	1613 789	1 -	- 2	8 6	13 6	26 8	43 19	65 26	183 56	256 79	299 129	298 129	210 131	211 194	- 4

TABLE 19 (Cont'd)

T-List	Detailed List Number 9th Revision	Cause Group	Sex	All Ages	0-9	10-	20-	30-	35-	40-	45-	50-	55-	60-	65-	70-	75+	Unk
T110	170	Malignant neoplasm of bone and articular cartilage	M F	38 39	- 3	6 8	4 4	4 1	1 -	2 -	5 1	1 2	4 4	3 6	4 1	1 2	2 5	1 2
T112	172	Malignant melanoma of skin	M F	17 26	2 -	- -	1 3	- -	1 2	1 1	- 1	2 1	3 4	2 2	2 3	- 3	3 6	- -
T113	173	Other malignant neoplasm of skin	M F	103 105	- -	- 2	1 1	4 5	6 -	7 4	10 4	13 9	15 9	14 12	5 14	11 15	13 28	4 2
T114	174	Malignant neoplasm of female breast	F	824	-	-	22	33	59	54	89	100	111	102	78	70	104	2
T120	180	Malignant neoplasm of cervix uteri	F	537	-	-	16	26	36	38	67	80	65	70	41	48	44	6
T122	179, 182	Malignant neoplasm of uterus, other and unspecified	F	171	-	-	2	3	5	9	16	30	23	32	22	11	16	2
T123	183	Malignant neoplasm of ovary and other uterine adnexa	F	172	2	8	9	7	5	10	14	22	25	26	16	12	15	1
T124	185	Malignant neoplasm of prostate	M	154	-	-	2	-	2	1	-	4	8	16	30	40	47	4
T125	186	Malignant neoplasm of testis	M	27	2	-	3	7	6	1	-	2	1	-	1	3	1	-

TABLE 19 (Cont'd)

T-List	Detailed List Number 9th Revision	Cause Group	Sex	All Ages	0-9	10-	20-	30-	35-	40-	45-	50-	55-	60-	65-	70-	75+	Unk
T126	188	Malignant neoplasm of bladder	M	379	-	2	3	5	5	7	14	22	41	71	77	62	69	1
T131 (part)	193	Malignant neoplasm of thyroid gland	F	146	-	-	1	3	-	-	-	7	13	24	21	34	43	-
T140	201	Hodgkin's disease	M	40	-	2	8	3	2	3	2	2	8	-	4	3	3	-
T141 (part)	200, 202	Non-Hodgkin's lymphoma	F	149	1	8	21	11	12	10	14	9	17	17	13	6	9	1
T141 (part)	203	Multiple myeloma and immunoproliferative neoplasms	M	25	2	3	7	2	-	-	4	-	-	2	3	1	1	-
T142	204-208	Leukaemia	F	12	1	2	1	2	-	1	-	2	-	-	2	-	1	-
	140-146, 148-149, 152, 156, 158-160, 163-165, 171, 175, 181, 184, 187, 189-192, 194-199	Malignant neoplasm of other and unspecified sites	M	215	11	9	22	12	9	8	8	19	20	25	30	30	10	2
	140-208	All forms of cancer	F	173	4	8	14	14	8	7	10	12	15	13	25	17	23	3
			M	44	-	1	2	3	1	1	3	1	4	7	6	9	5	1
			F	31	-	-	1	-	-	3	2	1	4	4	6	6	4	-
			M	212	47	30	21	3	14	11	5	9	13	20	18	11	8	2
			F	136	22	18	13	9	5	6	6	5	14	9	12	3	13	1
			M	1052	31	14	30	24	26	41	78	127	144	143	155	127	103	9
			F	793	34	17	42	27	29	27	46	62	79	89	96	98	138	9
			T	13330	172	152	384	399	475	589	905	1383	1668	1899	1796	1656	1767	85
T080-T142			M	7573	103	78	192	187	247	339	517	857	1025	1169	1086	944	783	46
			F	5757	69	74	192	212	228	250	388	526	643	730	710	712	984	39
			T	13330	172	152	384	399	475	589	905	1383	1668	1899	1796	1656	1767	85

TABLE 20 NEW OVERSEAS CASES OF CANCER DIAGNOSED IN HONG KONG 1984

T-List	Detailed List Number 9th Revision	Cause Group	Sex	All Ages	0-9	10-	20-	30-	35-	40-	45-	50-	55-	60-	65-	70-	75+
T080 (part)	147	Malignant neoplasm of nasopharynx	M	28	-	1	1	3	3	6	6	3	2	1	2	-	-
T090	150	Malignant neoplasm of oesophagus	F	5	-	-	-	2	1	2	-	-	-	-	-	-	-
	152	Malignant neoplasm of small intestine, including duodenum	M	2	-	-	-	-	-	-	-	-	1	1	-	-	-
T095	155	Malignant neoplasm of liver and intrahepatic bile ducts	M	1	-	-	-	-	-	1	-	-	-	-	-	-	-
T102 (part)	160	Malignant neoplasm of nasal cavities, middle ear and accessory	M	2	-	-	1	-	-	-	1	-	-	-	-	-	-
T101	162	Malignant neoplasm of trachea, bronchus and lung	F	1	-	-	-	-	-	-	-	-	1	-	-	-	-
T114	174	Malignant neoplasm of female breast	F	3	-	-	-	-	-	1	-	-	-	1	1	-	-
T120	180	Malignant neoplasm of cervix uteri	F	1	-	-	-	-	-	-	-	-	-	1	-	-	-
T123	183	Malignant neoplasm of ovary and other uterine adnexa	F	1	-	-	-	-	-	1	-	-	-	-	-	-	-
T141	200	Lymphosarcoma and reticulosarcoma	F	1	-	-	-	-	-	1	-	-	-	-	-	-	-
T140	201	Hodgkin's disease	M	2	-	-	-	1	1	-	-	-	-	-	-	-	-
	148, 187, 188, 191	Malignant neoplasm of other and unspecified sites	M	4	-	-	-	-	-	-	-	-	-	1	-	-	-
T080-T142	140-208	All forms of cancer	M	41	-	1	2	4	4	7	7	5	4	3	4	-	-
			F	13	-	-	-	2	1	6	7	5	3	1	1	-	-
			T	54	-	1	2	6	5	13	13	10	9	4	5	-	-

TABLE 21 DEATHS FROM HEART DISEASES BY AGE AND SEX 1987
(Including Hypertensive Disease)

I-List No.	Cause (with detailed list no.)	Sex	All Ages	Age Group											Unk			
				0-	10-	20-	30-	35-	40-	45-	50-	55-	60-	65-		70-	75+	
T250	ACUTE RHEUMATIC FEVER (390-392)	M F	- -	- -	- -	- -	- -	- -	- -	- -	- -	- -	- -	- -	- -	- -	- -	- -
T251	CHRONIC RHEUMATIC HEART DISEASES (393-398)	M F	72 112	- 1	4 3	- 4	- 4	3 3	5 1	6 6	4 5	6 11	7 17	13 14	11 12	13 35	- -	- -
T260	Diseases of mitral valve (394)	M F	21 27	- 1	1 3	- -	- -	1 -	1 -	1 -	2 1	1 2	1 4	4 3	6 3	3 10	- -	- -
T261	HYPERTENSIVE HEART DISEASES (402, 404)	M F	298 286	- -	- -	- -	- -	1 -	1 -	2 -	5 9	11 4	23 11	31 18	51 35	70 56	101 161	- -
T261	OTHER HYPERTENSIVE DISEASES (401, 403, 405)	M F	131 126	- -	- -	- -	1 -	1 -	3 -	2 1	5 7	9 15	20 24	26 14	23 46	41 46	- -	- -
T270	ACUTE MYOCARDIAL INFARCTION (410)	M F	983 686	1 -	3 -	- -	2 4	5 3	16 1	29 4	53 17	84 29	148 65	189 89	262 341	1 -	- -	- -
T271	OTHER ISCHAEMIC HEART DISEASES (411-414)	M F	550 601	- -	- -	1 -	1 -	- -	3 -	8 -	15 9	35 10	58 38	85 59	113 93	231 392	- -	- -
T280	DISEASES OF PULMONARY CIRCULATION (415-417)	M F	197 200	1 2	- 1	- 1	1 1	3 4	1 2	5 4	6 5	18 4	24 14	36 39	63 93	- -	- -	- -
T281	OTHER FORMS OF HEART DISEASES (420-429)	M F	159 114	2 -	5 2	13 4	15 4	11 3	1 1	6 4	5 1	8 2	9 6	14 6	19 14	51 67	- -	- -
T250- T281	ALL FORMS OF HEART DISEASES (390-429)	M F	2390 2125	4 2	8 4	18 8	20 13	24 13	30 5	65 20	99 48	183 82	297 177	417 257	762 361	1 -	- -	- -

TABLE 22 INFECTIOUS DISEASES NOTIFIED 1983 TO 1987

Disease	Cases							Deaths						
	1983	1984	1985	1986	1987	1988	1989	1984	1985	1986	1987	1988	1989	
Amoebiasis	37	29	16	13	6	2	2	1	2	-	-	-	-	
Bacillary Dysentery	479	396	519	344	381	1	1	-	-	1	-	-	-	
Cerebrospinal Meningitis & Meningococcal Infections	13	8	12	6	2	1	1	-	-	1	-	-	-	
Chickenpox	1 228	2 433	1 194	1 635	1 879	1	1	3	-	1	-	-	-	
Cholera	-	1	2	30#	4	-	-	-	-	1	-	-	-	
Diphtheria	-	-	-	-	-	-	-	-	-	-	-	-	-	
Enteric Fever : Typhoid	346	317	267	186	248	3	-	1	1	1	1	1	1	
Paratyphoid	23	14	20	12	25	-	-	-	-	-	-	-	-	
Food Poisoning : Outbreaks (Persons affected)	169	233	278	223	378	-	-	-	-	-	-	-	-	
Leptosy	(642)	(1 340)	(958)	(1 076)	(1 566)	1	1	2	-	-	-	-	-	
Malaria	38	32	32	29	21	-	-	-	-	-	-	-	-	
Measles	125	113	168	143	106	-	-	-	-	-	-	-	1	
Ophthalmia Neonatorum	888	678	280	215	194	2	2	2	1	-	-	-	1	
Poliomyelitis	1	6	5	5	10	-	-	-	-	-	-	-	-	
Puerperal Fever	1	-	1	-	-	-	-	-	-	-	-	-	-	
Rabies (Human)	-	2*	-	2*	-	-	-	2	-	-	-	-	-	
Scarlet Fever	3	5	1	9	3	-	-	-	-	-	-	-	-	
Tuberculosis	7 301	7 843	7 545	7 432	7 269	446	420	409	407	405	-	-	-	
Typhus (Urban)	-	1*	1	1	-	-	-	-	-	-	-	-	-	
Typhus (Scrub)	3	6	12	5	4	-	-	-	-	-	-	-	-	
Viral Hepatitis	1 783	1 780	1 601	1 425	1 554	28	12	13	19	23	-	-	-	
Whooping Cough	-	18	21	1	-	-	-	-	-	-	-	-	-	
Total	12 438	13 915	11 975	11 716	12 084	485	443	426	433	434	-	-	-	

Remarks : No case of smallpox, plague, epidemic louse-borne typhus, yellow fever or relapsing fever was reported during the specified years.

* Imported cases

Including 7 imported cases in 1986

TABLE 23 NOTIFICATION AND DEATH RATES OF SELECTED INFECTIOUS DISEASES 1983 TO 1987

Disease	Notification Rate (per 100 000 population)						Death Rate (per million population)													
	1983		1984		1985		1986		1987		1983		1984		1985		1986		1987	
	Amoebiasis	0.69	0.54	0.29	0.23	0.11	0.37	0.19	0.18	0.18	0.18	0.36	-	0.18	-	0.18	-	0.18	-	0.18
Bacillary Dysentery	8.96	7.34	9.51	6.22	6.79	0.19	-	-	-	-	-	-	-	-	-	-	-	-	-	
Cerebrospinal Meningitis & Meningococcal Infections	0.24	0.15	0.22	0.11	0.04	0.19	-	-	-	-	-	-	-	-	-	-	-	-	-	
Diphtheria	-	-	-	-	-	-	-	-	-	-	-	-	-	-	-	-	-	-	-	
Enteric Fever (Typhoid & Paratyphoid)	6.90	6.13	5.26	3.58	4.86	0.56	3.89	3.46	0.18	0.18	0.18	0.19	0.37	0.37	0.18	0.18	0.18	0.18		
Measles	16.61	12.56	5.13	3.89	3.46	0.37	134.33	129.49	83.44	77.81	74.96	73.56	72.15	72.15	72.15	72.15	72.15	72.15		
Tuberculosis	136.59	145.30	138.28	134.33	129.49	83.44	25.76	27.68	5.24	2.22	2.38	3.43	4.10	4.10	4.10	4.10	4.10	4.10		
Viral Hepatitis	33.36	32.98	29.34	25.76	27.68	5.24	25.76	27.68	5.24	2.22	2.38	3.43	4.10	4.10	4.10	4.10	4.10	4.10		

TABLE 24 SELECTED INFECTIOUS DISEASES NOTIFIED BY AGE AND SEX 1987

Age Group	Tuberculosis		Viral Hepatitis		Enteric Fever		Bacillary Dysentery	
	M	F	M	F	M	F	M	F
0 - 4	27	21	2	3	4	7	40	30
5 - 9	27	24	26	17	13	10	26	22
10 - 14	29	29	60	36	20	8	20	10
15 - 19	211	222	160	80	12	7	11	17
20 - 24	490	423	246	136	33	24	21	31
25 - 29	528	389	222	100	32	20	13	16
30 - 34	386	234	127	48	12	17	13	15
35 - 39	345	185	74	29	6	3	8	7
40 - 44	239	102	42	19	7	5	8	1
45 - 49	261	77	22	12	2	4	3	4
50 - 54	397	92	24	9	2	3	9	4
55 - 59	476	92	22	9	1	6	2	6
60 - 64	451	103	7	8	1	1	6	8
65 - 69	389	134	4	5	2	1	4	9
70 - 74	286	110	1	1	1	4	5	1
75 & over	298	168	1	1	3	1	3	8
Unknown	15	9	-	-	1	-	-	-
Total	4 855	2 414	1 040	513	152	121	192	189
	7 269		1 554 (1)		273		381	

Note : Figures in brackets denote sex unknown included.

TABLE 25 MALARIA 1982 TO 1987

Cases Notified

Year	Imported	Induced	Indigenous	Relapsing	Undetermined	Total Cases
1982	77	2	1	-	-	80
1983	94	1	30	-	-	125
1984	101	-	10	2	-	113
1985	162	1	3	-	2	168
1986	127	1	8	3	4	143
1987	96	-	6	3	1	106

Note :

- (1) All imported relapsing cases are grouped under 'imported cases'.
 (2) Congenital and blood transfusion cases are grouped under 'induced cases'.

Identification of Parasites

Year	P. Vivax	P. Falciparum	P. Malariae	P. Ovale	Mixed Infection	Species Undetermined	Total
1982	69	7	3	-	-	1	80
1983	103	9	6	-	-	7	125
1984	92	12	3	1	2	3	113
1985	134	19	4	-	11	-	168
1986	122	8	3	-	7	3	143
1987	92	12	1	-	-	1	106

TABLE 26 PROPHYLACTIC IMMUNIZATIONS 1983 TO 1987

Immunizations	1983	1984	1985	1986	1987
Smallpox	578	229	-	-	-
Cholera	5 887	5 595	5 691	138 872	7 146
Diphtheria/Pertussis/Tetanus	267 365	263 317	257 083	243 069	234 391
Diphtheria/Tetanus	147 262	177 964	141 742	178 733	177 864
Typhoid					
1st Dose	829	1 180	1 147	1 530	58
2nd Dose	63	102	138	75	41
Booster Dose	1 097	720	858	856	1 718
Tuberculosis (BCG)					
Infant	84 186	78 389	77 199	72 780	71 049
Others	72 050	52 622	60 393	68 956	57 705
Poliomyelitis					
Type I for Newborn	81 528	76 096	74 312	69 357	67 338
1st Dose - Trivalent	75 670	70 608	67 302	63 137	63 813
2nd Dose - Trivalent	77 768	74 679	72 175	67 020	63 545
Booster Dose - Trivalent	193 452	224 226	212 710	227 505	225 159
Measles	76 211	74 788	71 820	67 417	62 905
Rubella	41 662	44 079	45 611	43 388	47 101
Tetanus#	-	-	-	-	237 661

Since January 1987

TABLE 27 TUBERCULOSIS MORTALITY 1961, 1977 AND 1983 TO 1987

Year	Total Deaths from Tuberculosis	Tuberculosis Death Rate per 100 000 Population	Tuberculosis Deaths as percentage of total registered deaths	Average Age at death from Tuberculosis
1961	1 907	60.2	10.2	43.0
1977	532	11.6	2.3	61.0
1983	446	8.3	1.7	63.0
1984	420	7.8	1.6	64.5
1985	409	7.5	1.6	65.0
1986	407	7.4	1.6	69.0
1987	405	7.2	1.5	69.0

TABLE 28 TUBERCULOSIS IN CHILDHOOD 1961, 1977 AND 1983 TO 1987

Year	Percentage* of newborns receiving BCG	Percentage of Tuberculosis Deaths under 5 years	Percentage of Tuberculosis Deaths under 1 year	Infantile Mortality from Tuberculosis (per 1 000 births)
1961	77.77	11.48	2.62	0.46
1977	97.84	0.38	-	-
1983	99.48	0.45	-	-
1984	99.68	0.24	0.24	0.01
1985	99.75	-	-	-
1986	99.85	-	-	-
1987	99.81	-	-	-

* Percentage of newborns based on registered birth figures in 1961 and based on known birth figures since 1970.

TABLE 29 TUBERCULOSIS NOTIFICATIONS 1961, 1977 AND 1983 TO 1987

Year	Government Chest Clinics	Other Government Institutions	Tung Wah Group Hospitals	Other Non-Government Institutions & Private Sources	Total	Notification Rate per 100 000 population
1961	8 957	2 056	947	624	12 584	397.21
1977	4 406	489	226	2 070	7 191	156.88
1983	4 509	634	385	1 773	7 301	136.59
1984	5 196	506	319	1 822	7 843	145.30
1985	5 118	432	394	1 601	7 545	138.28
1986	5 096	577	254	1 505	7 432	134.33
1987	4 754	493	309	1 713	7 269	129.49

TABLE 30 WORK OF TUBERCULOSIS AND CHEST SERVICE 1987

Total attendances	720 282
Total patients attending (old & new)	90 642
Number of new patients	42 685
Classification of new patients	
I) NSD [#] & Unknown	20 500(48.03)
II) Diseases other than tuberculosis	10 440(24.46)
III) Non-respiratory tuberculosis	467 (1.09)
a) Meninges	10(0.02)
b) Bones and joints	35(0.08)
c) Others	422(0.99)
IV) Respiratory tuberculosis	
a) Not active and unknown activity	5 587(13.09)
b) Active	5 515(12.92)
i) By bacteriology and extent	
Negative A1	2 166(5.07)
A2	267(0.63)
A3	42(0.10)
Positive B1	1 596(3.74)
B2	851(1.99)
B3	278(0.65)
Incomplete 01	250(0.59)
02	48(0.11)
03	17(0.04)
ii) By previous history and treatment	
No previous history of tuberculosis	4 799(11.24)
Previously diagnosed, no treatment	21(0.05)
Previously diagnosed, with treatment	627(1.47)
Previous history not known	68(0.16)
Total with examination completed	42 509(99.59)

Note : Figures in brackets denote percentage of total new patients.

Nil of significance detected.

TABLE 31 EXAMINATION OF NEW CONTACTS OF TUBERCULOSIS PATIENTS 1987

Number of patients listed	7 414	
Number of contacts listed	19 023	
(a) Number of children with negative tuberculin/tine*	690	
Number of children given BCG	677	
(b) Number of contacts X-rayed	15 210	(100.00%)
Results		
NSD# & Unknown	14 504	(95.36%)
Diseases other than TB	190	(1.25%)
Respiratory TB		
Active A (negative by bacteriology)	91	(0.60%)
B (positive by bacteriology)	46	(0.30%)
O (incomplete investigation)	7	(0.05%)
Not active	335	(2.20%)
Non-respiratory TB	8	(0.05%)
Result not yet known	29	(0.19%)

Nil of significance detected.

* For NT Chest Clinics only.

TABLE 32 ANNUAL ATTENDANCES AND TREND OF VENEREAL DISEASES 1978 TO 1987

NEW ATTENDANCES	1978	1979	1980	1981	1982	1983	1984	1985	1986	1987
VENEREAL DISEASES										
Sypphilis	1 244	1 130	1 092	970	830	699	649	634	563	518
Non-congenital	83	37	102	109	94	70	36	54	36	59
Primary	17	14	36	37	20	29	13	19	19	27
Secondary	258	282	239	188	130	149	150	89	97	77
Early Latent	783	706	663	588	553	428	421	450	376	322
Late Latent	9	15	18	13	12	10	22	11	26	27
All Others	27	22	6	-	-	2	1	1	-	-
Congenital	67	54	28	35	21	11	6	10	9	6
Under 1 year	2 052	2 761	2 629	3 362	4 546	4 275	4 967	4 796	5 008	6 035
Over 1 year	-	-	-	549	797	599	564	968	766	630
Non-specific Genital Infection*	847	974	960	943	1 294	1 086	1 203	1 696	2 304	2 679
Non-gonococcal Urethritis	234	163	357	439	310	261	422	628	370	184
Chancroid	48	36	76	75	31	31	25	20	14	17
Lymphogranuloma Venereum	-	-	267	268	414	497	351	346	370	731
Herpes Genitalis+	-	-	456	673	971	1 368	1 563	1 897	1 854	2 196
Genital Warts+	-	-	66	42	86	103	137	180	283	367
Pediculosis Pubis+	-	-	-	-	229	390	245	228	183	134
Scabies#	-	-	-	-	298	207	227	264	135	722
Others (unclassified)	176	324	399	280	298	207	227	264	135	722
ALL VENEREAL DISEASES	4 601	5 388	6 302	7 601	9 806	9 516	10 353	11 657	11 850	14 213
NON-VENEREAL DISEASES	5 316	4 900	6 250	6 643	6 820	7 701	8 273	14 935	9 226	8 522
SKIN DISEASES	16 907	16 392	15 470	14 964	16 960	17 664	14 922	8 696	10 729	12 271
NEW ATTENDANCES (ALL TYPES)	26 824	26 680	28 022	29 208	33 586	34 881	33 548	35 288	31 805	35 006
TOTAL ATTENDANCES (ALL TYPES)	138 858	142 691	144 641	150 852	166 933	173 957	176 024	184 534	180 072	177 327

* Formerly classified as non-veneral diseases

+ Formerly classified as skin diseases

Formerly classified as skin diseases; partly classified as veneral diseases w.e.f. 1982

TABLE 33 VDRL EXAMINATIONS IN EXPECTANT MOTHERS 1983 TO 1987

Examinations	1983	1984	1985	1986	1987
Venous Blood	83 122	82 228	83 948	79 622	79 578
Positive	283	438	434	307	362
% Positive	0.34	0.53	0.52	0.39	0.45

TABLE 34 LEPROSY CASES 1978 TO 1987

I) Incidence of Leprosy

Year	New Cases		New Cases Admitted to Lai Chi Kok Hospital
	No.#	Incidence Rate per 100 000 population	
1978	74	1.6	23
1979	70	1.4	20
1980	60	1.2	18
1981	55	1.1	10
1982	57	1.1	14
1983	38	0.7	6
1984	32	0.6	4
1985	32	0.6	9
1986	29	0.5	5
1987	21	0.4	4

Including imported cases.

II) Number of New Cases by Age 1987

Age Group	No. of cases
Under 1	-
1 - 4	-
5 - 9	-
10 - 14	1
15 - 19	-
20 - 24	-
25 - 29	1
30 - 34	2
35 - 39	1
40 - 44	1
45 - 49	3
50 - 54	1
55 - 59	1
60 & over	10
Total	21

TABLE 35 ANALYSIS OF NEW DERMATOLOGICAL CASES PRESENTING AT CLINICS 1987

Dermatological Condition	No. of New Cases	Dermatological Condition	No. of New Cases
Acne	985	Paronychia	99
Alopecia	230	Pediculosis	5
Angioedema	3	Pemphigus	12
Callus	51	Photo sensitivity	-
Carcinoma	25	Pityriasis alba	186
Contact dermatitis	548	Pityriasis rosea	157
Dermatitis (all types)	24	Porphyria	1
Dermatofibroma	6	Pruritus	303
Dermatomyositis	4	Psoriasis	458
Drug eruption	79	Purpura	11
Eczema (all types)	5 564	Pyoderma	218
Epidermolysis bullosa	-	Raynaud's phenomenoma	-
Erythema	41	Rosacea	112
Granuloma	9	Scabies	482
Herpes simplex	117	Scleroderma	4
Herpes zoster	226	Seborrhoeic wart	129
Ichthyosis	18	Syringoma	2
Insect bite reaction	174	Tinea (all types)	1 915
Keloid	46	Tinea versicolor	387
Keratosis (all types)	51	TB Cutis	3
Lichen amyloidosis	37	Trichoepithelioma	-
Lichen nitidus	2	Tumors, benign	7
Lichen planus	30	Ulcer, varicose	17
Lichen simplex	477	Urticaria	711
Lupus (all types)	20	Vasculitis	3
Miliaria	54	Verruca	988
Molluscum contagiosum	55	Vitiligo	195
Monilia infection	12	Xanthoma	14
Mycosis	1	Leprosy	2
Nail dystrophy	44	Miscellaneous	877
Nevi (all types)	125		
Neurodermatitis	56	TOTAL	16 412

TABLE 36 DISTRIBUTION OF FAMILY HEALTH CENTRES AS AT 31ST MARCH 1988

Centre	Hong Kong	Kowloon	NT and Islands	Total
<u>Maternal & Child Health</u>				
Full-time				
with Midwifery Service	-	7	3	10
without Midwifery Service	8	8	6	22
Part-time				
with Midwifery Service	-	-	8	8
without Midwifery Service	1	2	2	5
<u>Comprehensive Observation Service</u>				
Full-time	8	16	10	34
Part-time	1	1	9	11
<u>Family Planning</u>				
Full-time	-	2	3	5
Part-time	10	15	18	43

TABLE 37 WORK OF FAMILY HEALTH SERVICE 1986 AND 1987

(Maternal and Child Health)

	<u>1986</u>	<u>1987</u>
<u>Number of Centres (as at 31.12.87)</u>		
Full-time	30	31
Part-time	14	14
<u>Ante-natal Sessions</u>		
Total sessions	4 188	4 266
New attendances	30 444	28 972
Total attendances	211 666	203 986
Average attendance per session	50.54	47.82
Average attendance per person	6.95	7.04
<u>Post-natal Sessions</u>		
Total sessions	1 646	1 665
New attendances	24 801	23 703
Total attendances	25 020	23 959
Percentage presenting with some abnormalities	3.73%	3.06%
<u>Infant Welfare Sessions (0-2 years of age)</u>		
Total sessions	9 670	9 876
New attendances	67 685	65 218
Total attendances	1 060 148	1 043 515
<u>Toddler Welfare Sessions (2-5 years of age)</u>		
Total sessions	1 663	1 686
New attendances	48 796	47 355
Total attendances	129 640	134 506
<u>Percentage presenting with some abnormalities (0-5 years of age)</u>	3.08%	3.08%
<u>Home Visits</u>	95 940	106 415

TABLE 38 WORK OF FAMILY HEALTH SERVICE 1986 AND 1987

(Comprehensive Observation Service)

	<u>1986</u>	<u>1987</u>
<u>Number of centres (as at 31.12.87)</u>		
Full-time	33	34
Part-time	11	11
Number of sessions held	17 069	17 666
Number of children examined	151 136	150 195
Number of new cases	62 639	60 551
Total number of developmental screening tests done	199 209	198 787
Number of children found to have defects/disabilities* (including provisional cases)	2 141	2 656
Number of referrals	3 418	3 710

* Based on notification forms received.

TABLE 39 WORK OF FAMILY HEALTH SERVICE 1986 AND 1987

(Family Planning)

		<u>1986</u>	<u>1987</u>
Number of centres (as at 31.12.87)	Full-time	5	5
	Part-time	42	43
	Total	47	48
Number of sessions provided		8 075	8 144
Number of clients	New	45 136	43 063
	Old	92 958	95 377
	Total	138 094	138 440
Number of attendances		472 686	472 468
Characteristics of new clients			
I. Contraceptive method	Pills	16 829	15 028
	Injections	2 026	2 615
	IUD's	567	615
	Condoms	23 659	23 156
	Other methods	2 055	1 649
	Total	45 136	43 063
II. Age	Under 20	878	700
	20 - 24	8 603	7 042
	25 - 29	20 370	19 079
	30 - 34	10 948	11 736
	35 - 39	3 380	3 582
	40 - 44	719	731
	45 & over	238	193
Total	45 136	43 063	

Note : New clients refer to

- (1) Clients never attend family planning clinics.
- (2) F.P.A. clients first attend our clinics after the date of take-over.
- (3) Return of clients after pregnancy, advised pregnancy, advised sterilization and referred to hospital.
- (4) Return of non-I.U.D. clients whose date of last visit was over 2 years ago and I.U.D. clients whose date of last visit was over 4 years ago.

TABLE 40 WORK OF OCCUPATIONAL HEALTH DIVISION 1986 AND 1987

	<u>1986</u>	<u>1987</u>
I. <u>Number of Confirmed Occupational Diseases</u>		
Asbestos - related disease	5	2
Beat hand	1	-
Compressed air illness Compression barotrauma	-	1
Cramp of hand or forearm	-	3
Decompression sickness Type I	-	136
Type II	4	3
Dysbaric osteonecrosis	2	3
Contact dermatitis	31	27
Gas poisoning	55	25
Lead poisoning	1	-
Radiation injury	-	1
Silicosis	176	168
Tenosynovitis of hand or forearm	4	10
II. <u>Occupational Injuries</u>		
No. of occupational injuries reported	94 347	104 793
No. of accidents requiring notification under Employees' Compensation Ordinance	87 101	97 509
III. <u>Employees' Compensation Case Work</u>		
Total no. of interviews with injured employees	200 708	220 994
Cases assessed by Ordinary Assessment Boards#	17 352	20 046
Cases assessed by Medical Assessment Boards+	33	4
Cases assessed by Special Assessment Boards@	7	7
Cases assessed by Protheses and Surgical Appliances Boards@	482	685
# Nursing staff assisted in the preparation and clearance of cases of Ordinary Assessment Boards.		
+ Employees' compensation cases occurring before 1.7.83 assessed by Occupational Health Officers.		
@ Employees' compensation cases occurring on and after 1.7.83 are assessed by statutory boards with the enactment of the Employees' Compensation (Amendment) Ordinance. Occupational Health Officers sat on Special Assessment Boards and Protheses and Surgical Appliances Boards.		

TABLE 41 ENVIRONMENTAL AND BIOLOGICAL MONITORING AND SURVEY WORK OF OCCUPATIONAL HEALTH DIVISION 1987

I. Field Survey Work

Nature of Survey Work	No. of Surveys	No. of Samples Taken
(A) Atmospheric monitoring :		
Acetic acid	1	1
Acetone	11	17
Ammonia	14	18
Asbestos	47	107
Benzene	20	2
Butyl acetate	6	9
Carbon dioxide	9	15
Carbon monoxide	18	31
Carbon tetra-chloride	2	1
Chlorine	7	7
Chloroform	5	5
Chromic acid mist	26	31
Copper	1	1
Cotton dust	14	113
Diethyl ether	1	3
Dust (including mineral dust, wood dust, etc)	136	344
Ethanol	3	17
Ethyl acetate	21	25
Explosive gas	3	3
Formaldehyde	2	3
Gasoline	5	3
Hexane	1	5
Hydrocarbon	4	7
Hydrogen chloride	8	9
Hydrogen cyanide	3	4
Hydrogen fluoride	2	1
Hydrogen sulphide	8	11
Iso-propyl alcohol	6	6
Lead	10	16
Mercury	3	13
Methyl ethyl ketone	11	14
Methylene chloride	7	13
Methyl di-isocyanate	7	33
Nickel	1	1
Nickel salt	1	1
Nitrogen dioxide	10	16
Oil mist	3	7
Organic vapour	56	75
Oxygen	8	12
Ozone	27	33
Perchloroethylene	14	18
Phenol	2	2
Styrene	13	29
Sulphur dioxide	1	2
Sulphuric acid mist	1	2
Toluene	93	125
Toluene di-isocyanate	5	10
1,1,1-Trichloroethane	100	89
Trichloroethylene	58	71
Welding fume	1	4
Xylene	17	32
Zinc	2	3

TABLE 41 (Cont'd)

I. Field Survey Work

Nature of Survey Work	No. of Surveys	No. of Samples Taken
(B) Ventilation surveys :		
General ventilation	354	23
Local exhaust	437	40
(C) Thermal surveys	4	2
(D) Lighting surveys	1	-
(E) Radiation surveys	3	5
Total	1 634	1 490
	=====	=====

II. Laboratory Analysis Work

Nature of Analysis Work	No. of Analyses	No. of Samples/Specimens Collected
(A) Chemical analysis :		
Air bags	(4)	(4)
Asbestos (counting)	207	109
Benzene (bulk solvent samples)	(68)	(68)
Bulk solid samples	(170)	(150)
Bulk solvents samples	(76)	(76)
Dust	10	10
Fibre gass	7	7
Methyl di-isocyanate	(38)	(38)
Lead	15	15
Mercury vapour	(12)	(12)
Mixed solvents (esters, ketones, hydrocarbons, etc.)	(155)	(155)
Oil mist	8	8
Silica	(305)	(305)
Welding fumes (and metals)	(85)	(84)
(B) Blood chemistry :		
Blood lead	(56)	(56)
(C) Urinalysis :		
Glucose	386	386
Protein	340	340
Urine hippuric/methyl hippuric acid	(20)	(10)
Urine lead	(18)	(18)
Total	973 (1 010)	875 (979)
	=====	=====

Note : Figures in brackets were analyses/samples/specimens being referred to the Government Laboratory for chemical analysis.

TABLE 42 WORK OF PORT HEALTH SERVICE 1986 AND 1987

	<u>1986</u>	<u>1987</u>
Number of ships inspected	2 535	2 268
Number of deratting certificates issued	1	-
Number of deratting exemption certificates issued	474	412
Number of radio pratique granted	10 479	11 601
Number of medical assistance and advice given	51	71
Vaccinations done		
cholera	21 758	6 261
yellow fever	1 302	1 506
plague	-	15
typhoid	2 114	1 660

Table 43 WORK OF CENTRAL HEALTH EDUCATION UNIT, 1987

I. Number of Centres :		3
II. Number of Campaigns :		16
	<u>No. of Occasion</u>	<u>No. of Attendance</u>
III. Health Education Activities		
Exhibition	13	89 850@
Workshop	86	5 530@
Audio-visual Shows	1 961	45 740@
Lectures/Seminars/Speeches/Talks	143	10 780@
Media (TV, radio, press) Contacts	136	-
Health Education Van Broadcasting	88	-
Health Education Telephone Hotline	32 478 ^Ω	-
Counselling and Information Provision	14 028	-
Meetings and Co-ordination	9 366	-
Surveys and Evaluation in Health Education	34	2 891*
Miscellaneous Health Education Activities	1 706	-
IV. Young Health Leaders Training Project :		
No. of Young Health Leaders Trained	236‡	-
Meeting and Training Sessions	40	525
Health Education Activities by Young Health Leaders	35	958#
V. Women's Correspondence Course :		
No. of Women Trained	107‡	-
Health Education Materials Delivered	9	33 825+
VI. Production of Materials :		
Health Education Materials, Printed Materials (poster, pamphlet, booklet, bookmark, cards, stickers)	2 662 869 (93)	
Audio-visual Materials (film, video, slide, tape, exhibits, teaching kits)	4 504(164)	
Miscellaneous Materials	236 834	
VII. Resource Supply and Distribution :		
Printed Materials (poster, pamphlet etc)	2 183 735(297)	
Audio-visual Materials (film, video etc)	16 913(406)	

Notes : @ Figures are rounded to the nearest ten.

Ω No. of calls.

* No. of respondents.

‡ No. of persons.

No. of participants.

+ No. of pages.

() No. of items.

