



DAILY INFORMATION BULLETIN

ISSUED BY GOVERNMENT INFORMATION SERVICES
BEACONSFIELD HOUSE, HONG KONG. TEL.: 842 8777

THURSDAY, NOVEMBER 26, 1992

CONTENTS

PAGE NO.

CONTACTS WITH JAPAN FURTHER DEVELOPED	1
GOVERNOR PRAISES JAPAN/HK BUSINESS COMMITTEE	2
GOVERNMENT SUBMITS REVISED PROPOSAL ON PAA FUNDS TO FINANCE COMMITTEE	3
GOVERNMENT COMMITTED TO INVESTING IN INFRASTRUCTURE	4
CONSUMER PRICE INDICES FOR OCTOBER	5
PROVISIONAL TRADE FIGURES FOR OCTOBER	11
SCA WELCOMES ELSIE TU'S MOVE	13
MORE EFFECTIVE CONTROL ON WASTEWATER DISCHARGE	14
CAMERAS TO DETECT RED LIGHT JUMPING	15
FIRE SERVICES PUBLICISES ITS PERFORMANCE PLEDGE	16
ACTION TO CLAMP DOWN EXEMPTED HOUSE IRREGULARITIES	18
BERTHING AND EMBARKATION FEES TO BE REVISED	18
CIVIC EDUCATION DAY IN SHA TIN	19
CAMP FOR DISABLED AT WEEKEND	20
FINANCE COMMITTEE TO MEET TOMORROW	21
HONG KONG GOVERNMENT EXCHANGE FUND MONEY MARKET OPERATIONS ..	22

THURSDAY, NOVEMBER 26, 1992

- 1 -

CONTACTS WITH JAPAN FURTHER DEVELOPED
* * * * *

THE GOVERNOR, THE RT HON CHRISTOPHER PATTEN, TONIGHT (THURSDAY) DESCRIBED HIS FIRST FULL DAY OF MEETINGS IN TOKYO AS EXTREMELY INTERESTING.

DURING A HECTIC ROUND OF ENGAGEMENTS, MR PATTEN HAS MET SOME OF JAPAN'S MOST SENIOR POLITICAL LEADERS, INCLUDING THE PRIME MINISTER, MR MIYAZAWA, AND THE FOREIGN MINISTER, MR MICHIO WATANABE, AS WELL AS A NUMBER OF BUSINESS LEADERS.

SPEAKING TO REPORTERS AFTER THE MEETINGS, THE GOVERNOR SAID HE HAD DISCUSSED THE STRONG ECONOMIC AND TRADE LINKS BETWEEN HONG KONG AND JAPAN, AND TALKED ABOUT HIS "HOPES AND ASPIRATIONS FOR ENSURING THAT THE JOINT DECLARATION IS FULLY IMPLEMENTED OVER THE NEXT FEW YEARS".

"IT HAS BEEN A VERY HELPFUL DAY FOR ME, VERY HELPFUL IN FURTHER DEVELOPING THE CONTACTS BETWEEN FRIENDS IN HONG KONG AND JAPAN," HE ADDED.

THE MEETING WITH MR MIYAZAWA LASTED FOR ABOUT 45 MINUTES, WHICH WAS CONSIDERABLY LONGER THAN HAD BEEN EXPECTED.

ASKED ABOUT THE JAPANESE REACTION TOWARDS HIS PROPOSALS FOR THE 1995 LEGCO ELECTIONS, MR PATTEN SAID HE THOUGHT THE JAPANESE GOVERNMENT RECOGNISED THAT THE ISSUE OF IMPLEMENTATING THE JOINT DECLARATION WAS A MATTER FOR HONG KONG AND CHINA AND BRITAIN.

"THEY ARE NOT, QUITE RIGHTLY, GOING TO INTERFERE IN THAT PROCESS. BUT LIKE OTHER FRIENDS OF HONG KONG, THEY WILL WATCH WITH GREAT INTEREST AT HOW THINGS DEVELOP IN THE NEXT YEARS.

"I'M SURE THAT EVERYBODY WHO WISHES HONG KONG WELL, WISHES FOR A SUCCESSFUL OUTCOME SO THAT WE CAN CONTINUE TO SECURE OUR PROSPERITY AND OUR STABILITY," MR PATTEN SAID.

TOMORROW, THE GOVERNOR HAS ANOTHER BUSY ROUND OF ENGAGEMENTS INCLUDING GIVING A KEYNOTE SPEECH TO A LUNCHEON JOINTLY HOSTED BY THE JAPAN/HONG KONG SOCIETY, THE HONG KONG/JAPAN BUSINESS CO-OPERATION COMMITTEE, THE TRADE DEVELOPMENT COUNCIL AND THE HONG KONG ECONOMIC AND TRADE OFFICE IN TOKYO.

HE WILL ALSO HOLD A PRESS CONFERENCE AT THE JAPAN NATIONAL PRESS CLUB AND HAVE MEETINGS WITH THE FINANCE MINISTER, MR HATA, AND THE MINISTER OF INTERNATIONAL TRADE AND INDUSTRY, MR KOZO WATANABE.

- - - - 0 - - - -

THURSDAY, NOVEMBER 26, 1992

- 2 -

GOVERNOR PRAISES JAPAN/HK BUSINESS COMMITTEE

* * * * *

THE GOVERNOR, THE RT HON CHRISTOPHER PATTEN, THIS (THURSDAY) MORNING OUTLINED HIS THOUGHTS ON THE POLITICAL AND ECONOMIC DEVELOPMENT OF HONG KONG.

IN HIS FIRST SPEECH TO THE JAPAN/HONG KONG, HONG KONG/JAPAN BUSINESS CO-OPERATION COMMITTEE IN TOKYO, MR PATTEN PRAISED THE COMMITTEE FOR BEING A "FORUM WHICH PRODUCES ACTIONS NOT JUST WORDS".

ITS SUCCESSES INCLUDED:

- THE REMOVAL OF ALL ITEMS ON THE HONG KONG EXCLUSION LIST UNDER THE JAPANESE GENERAL SCHEME OF PREFERENCES;
- ENCOURAGING THE JAPANESE TOY ASSOCIATION TO RECOGNISE TWO HONG KONG TESTING CENTRES WHICH GRANT THE "SAFE TOY" MARK ON ITS BEHALF; AND
- BEING INSTRUMENTAL IN HELPING TO ESTABLISH A SHEET METAL PROCESSING UNIT SUPPORTED BY THE JAPANESE GOVERNMENT AT HONG KONG'S VOCATIONAL TRAINING CENTRE.

"ALL THIS HAS HELPED TO STRENGTHEN THE INCREASINGLY CLOSE ECONOMIC RELATIONSHIP BETWEEN HONG KONG AND JAPAN," MR PATTEN SAID.

THE GOVERNOR POINTED OUT THAT JAPAN WAS HONG KONG'S THIRD LARGEST TRADING PARTNER AND WAS CURRENTLY THE BIGGEST INVESTOR IN HONG KONG.

MR PATTEN ALSO LISTED SOME OF HONG KONG'S ECONOMIC ACHIEVEMENTS INCLUDING:

- LOW AND PREDICTABLE TAXES;
- LOW AND CONTROLLED PUBLIC EXPENDITURE;
- MAXIMUM SUPPORT FOR INDUSTRY AND MINIMUM INTERFERENCE.

AS PART OF THE CONDITIONS FOR FUTURE SUCCESS, THE GOVERNOR MENTIONED CONTINUING INVESTMENT IN HONG KONG'S PHYSICAL INFRASTRUCTURE AND "INVESTMENT IN OUR SOCIAL INFRASTRUCTURE, SUCH AS EDUCATION, SOCIAL WELFARE, HOSPITAL SERVICES, AND STANDING UP FOR HONG KONG'S WAY OF LIFE AS DESCRIBED IN THE JOINT DECLARATION."

MR PATTEN ALSO OUTLINED TO THE BUSINESS CO-OPERATION COMMITTEE HIS PROPOSALS FOR THE 1995 LEGISLATIVE COUNCIL ELECTIONS.

HE STRESSED THAT THEY WERE "EXACTLY THAT - PROPOSALS". AND HE WELCOMED OTHER PROPOSALS AND IDEAS, PROVIDED THEY MEANT THE ARRANGEMENTS FOR THE 1995 ELECTIONS WOULD BE OPEN, FAIR AND ACCEPTABLE TO THE PEOPLE OF HONG KONG.

- - - - 0 - - - -

THURSDAY, NOVEMBER 26, 1992

- 3 -

GOVERNMENT SUBMITS REVISED PROPOSAL ON
PAA FUNDS TO FINANCE COMMITTEE

* * * * *

THE GOVERNMENT HAS TODAY (THURSDAY) SUBMITTED A REVISED PROPOSAL TO MEMBERS OF THE FINANCE COMMITTEE ON THE AMOUNT OF FUNDS TO BE ADVANCED TO THE PROVISIONAL AIRPORT AUTHORITY (PAA) FROM THE CAPITAL INVESTMENT FUND.

THE FUNDS ARE NEEDED BY THE PAA FOR THE \$9 BILLION SITE PREPARATION CONTRACT AT CHEK LAP KOK AND FOR OTHER ITEMS OF EXPENDITURE.

THE FINANCIAL SECRETARY, MR HAMISH MACLEOD, SAID: "DURING THE PAST TWO DAYS I HAVE HAD VERY USEFUL MEETINGS WITH MEMBERS OF THE FINANCE COMMITTEE. THERE WAS VERY CONSIDERABLE SUPPORT FOR THE SITE PREPARATION CONTRACT TO GO AHEAD.

"I HAVE ASSURED THE MEMBERS THAT THE GOVERNMENT'S SPENDING ON SOCIAL SERVICES AND OTHER PROGRAMMES WILL NOT BE AFFECTED BY THIS WORK AND THAT IT WILL CONTINUE TO GROW IN LINE WITH GROWTH IN THE ECONOMY. THERE IS NO QUESTION OF PEOPLE'S LIVELIHOOD SUFFERING BECAUSE OF THIS PROJECT.

"HOWEVER MEMBERS HAVE EXPRESSED CONCERNS THAT, AT THIS STAGE, WE SHOULD ONLY PROVIDE FUNDS WHICH ARE ABSOLUTELY ESSENTIAL TO ENABLE THIS PROJECT TO PROCEED," MR MACLEOD SAID.

"IN THE LIGHT OF THESE CONCERNS, WE HAVE IDENTIFIED ITEMS THAT CAN BE TRIMMED OR PHASED. THIS HAS ENABLED US TO SUBMIT A REVISED PROPOSAL WHICH REDUCES THE FUNDS BEING REQUESTED BY \$1.931 BILLION FROM THE ORIGINAL \$8.630 BILLION TO \$6.699 BILLION."

MR MACLEOD EXPLAINED THAT THE \$1.931 BILLION AROSE PARTLY FROM: A REDUCTION FROM 17.15 PER CENT TO 12.5 PER CENT IN THE CONTINGENCY SUM REQUIRED FOR THE SITE PREPARATION CONTRACT AND RELATED WORKS; DEFERRAL OF FUNDS TOTALLING \$1.058 BILLION REQUIRED AFTER JUNE 1993 FOR FINANCING HEADQUARTERS' MANAGEMENT COSTS; AND DEFERRAL OF EIGHT DESIGN CONTRACTS (AS ANNOUNCED ON NOVEMBER 24).

"THE \$6.699 BILLION IS THE MINIMUM NEEDED TO ALLOW THE IMPORTANT SITE PREPARATION CONTRACT AND ITS ESSENTIAL RELATED WORK TO PROCEED, WHILE WE CONTINUE WITH OUR EFFORTS TO OBTAIN AGREEMENT WITH CHINA ON THE OVERALL FINANCING FOR THE AIRPORT," MR MACLEOD SAID.

- - - - 0 - - - -

/4

THURSDAY, NOVEMBER 26, 1992

- 4 -

GOVERNMENT COMMITTED TO INVESTING IN INFRASTRUCTURE

* * * * *

THE GOVERNMENT WILL CONTINUE TO BUILD FOR THE FUTURE AND INVEST IN HONG KONG'S INFRASTRUCTURE, THE FINANCIAL SECRETARY, MR HAMISH MACLEOD, SAID TODAY (THURSDAY).

"AT THE SAME TIME, WE WILL CONTINUE TO STEP UP OUR EFFORTS TO MEET THE HOUSING NEEDS OF THE COMMUNITY AND FULFIL OUR CONTINUING COMMITMENTS TO THE HOUSING PROGRAMME," HE ADDED.

HE WAS OFFICIATING AT THE GROUND-BREAKING CEREMONY OF THE LAND DEVELOPMENT CORPORATION'S REDEVELOPMENT PROJECT AT LI CHIT STREET, WAN CHAI.

MR MACLEOD POINTED OUT THAT BETWEEN NOW AND 1997, AN AVERAGE OF OVER 100 NEW FLATS WOULD BE BUILT EVERY DAY BY THE HOUSING AUTHORITY AND THE HOUSING SOCIETY.

FURTHERMORE, ALL URBAN SQUATTERS ON GOVERNMENT LAND WOULD BE REHOUSED BY MARCH 1996 AND ALMOST THREE-QUARTERS OF THOSE LIVING IN EXISTING TEMPORARY HOUSING AREAS WOULD BE REHOUSED BY 1997, HE SAID.

MEANWHILE, HE SAID, THE GOVERNMENT WOULD BE LAUNCHING A NEW MIDDLE-INCOME HOUSING SCHEME TO BENEFIT ABOUT 13,000 FAMILIES IN THE SANDWICH CLASS BY 1997.

"BEFORE THE FLATS FROM THE NEW SCHEME BECOME AVAILABLE, WE WILL BE BUYING FLATS FROM THE PRIVATE SECTOR TO SELL TO THE SANDWICH CLASS AT AFFORDABLE PRICES.

"THIS SCHEME SHOULD GO A LONG WAY IN EASING THE HOUSING PROBLEMS OF THIS PARTICULAR INCOME GROUP WHO FACE SPECIAL DIFFICULTY IN REALISING THEIR AMBITION TO BUY THEIR OWN HOME," MR MACLEOD SAID.

THE FINANCIAL SECRETARY ALSO STRESSED THE NEED FOR COMPREHENSIVE URBAN REDEVELOPMENT TO UPGRADE HONG KONG'S INFRASTRUCTURE AND TO PROVIDE A MORE COMFORTABLE HOME AND GENERALLY IMPROVED ENVIRONMENT FOR THOSE CURRENTLY LIVING IN OLD AND DILAPIDATED AREAS.

HE CITED AN EXAMPLE THAT HEIGHT RESTRICTIONS WERE CURRENTLY IMPOSED ON BUILDINGS IN KOWLOON PRIMARILY BECAUSE OF AVIATION REQUIREMENTS.

"ONCE THE KAI TAK AIRPORT HAS BEEN RELOCATED TO CHEK LAP KOK, THESE RESTRICTIONS ARE LIKELY TO BE LIFTED.

"AS A RESULT, THIS WOULD OPEN UP CONSIDERABLE NEW DEVELOPMENT AND REDEVELOPMENT OPPORTUNITIES.

"THIS WOULD IN TURN REINFORCE THE NEED FOR A COMPREHENSIVE PROGRAMME OF RENEWAL WITHIN THE EXISTING URBAN AREAS IN ORDER TO FACILITATE THE REDEVELOPMENT PROCESS." HE SAID.

HE SAID IN THIS RESPECT THE LAND DEVELOPMENT CORPORATION ALONG WITH OTHER AGENTS AND THE PRIVATE SECTOR WOULD HAVE A ROLE TO PLAY.

/THE LI

THE LI CHIT STREET REDEVELOPMENT PROJECT, WHEN COMPLETED, WOULD BRING ABOUT A FACE-LIFT TO THE CROWDED URBAN ENVIRONMENT IN WAN CHAI BY PROVIDING THE MUCH-NEEDED OPEN SPACE AND COMMUNITY FACILITIES, INCLUDING A HOME FOR THE ELDERLY, A SOCIAL THERAPY CENTRE AND AN URBAN HOSTEL, MR MACLEOD SAID.

IN ADDITION, IT WILL PROVIDE 30 FLOORS OF NEW RESIDENTIAL PROPERTY COMPRISING 180 FLATS.

A UNIQUE FEATURE OF THIS REDEVELOPMENT WOULD BE THE PRESERVATION OF THE UNIQUE ARCHITECTURAL DESIGN OF THE FACADES OF THE OLD BUILDINGS THROUGH LANDSCAPING.

MR MACLEOD WISHED THE LAND DEVELOPMENT CORPORATION AND THE NEW WORLD DEVELOPMENT LTD, THE JOINT VENTURE PARTNER, EVERY SUCCESS IN THE DEVELOPMENT PROJECT.

- - - - 0 - - - -

CONSUMER PRICE INDICES FOR OCTOBER

* * * * *

CONSUMER PRICE INFLATION MODERATED IN OCTOBER AFTER A RELAPSE IN SEPTEMBER, ACCORDING TO THE FIGURES RELEASED TODAY (THURSDAY) BY THE CENSUS & STATISTICS DEPARTMENT.

THE CONSUMER PRICE INDEX (A) IN OCTOBER 1992 WAS 9.5% HIGHER THAN IN OCTOBER 1991. THIS WAS LOWER THAN THE FIGURE OF 9.9% IN THE PRECEDING MONTH.

THE CPI(B) AND THE HANG SENG CPI WERE HIGHER BY 10% AND 9.5% RESPECTIVELY IN OCTOBER 1992 THAN IN OCTOBER LAST YEAR. THE CORRESPONDING INCREASES IN SEPTEMBER 1992 WERE BOTH 10.2%.

THE COMPOSITE CPI, WHICH WAS COMPILED BASED ON THE COMBINED EXPENDITURE PATTERN OF HOUSEHOLDS COVERED BY THE THREE CPI'S, SHOWED AN INCREASE OF 9.7% IN OCTOBER 1992 OVER THE SAME MONTH IN 1991. THE CORRESPONDING INCREASE IN SEPTEMBER 1992 WAS 10.1%.

COMMENTING ON THE FIGURES, THE FINANCIAL SECRETARY, MR HAMISH MACLEOD, SAID: "ALTHOUGH THE OCTOBER CPI INFLATION FIGURE IS STILL RELATIVELY HIGH, THE LATEST MODERATION SHOWS THAT THE SHARP REBOUND IN SEPTEMBER WAS ONLY TEMPORARY."

"TAKEN TOGETHER, INFLATION FOR THE FIRST 10 MONTHS OF THIS YEAR HAS REMAINED AT A SINGLE-DIGIT LEVEL. OUR FORECAST OF A 9.5% INCREASE IN THE CPI(A) FOR 1992 AS A WHOLE SHOULD BE ACHIEVABLE."

THE SLOWER YEAR-ON-YEAR RATES OF INCREASE IN THE CPI'S IN OCTOBER THAN IN SEPTEMBER THIS YEAR WERE MAINLY DUE TO THE PRICES OF FRESH VEGETABLES RETURNING TO A LOWER LEVEL AFTER THE UPSURGE IN SEPTEMBER.

/COMPARING OCTOBER

COMPARING OCTOBER 1992 WITH OCTOBER 1991, RELATIVELY SLOWER INCREASES IN PRICES WERE RECORDED FOR DURABLE GOODS (1.8% IN BOTH CPI(A) AND CPI(B)); FOOD (EXCLUDING MEALS AT RESTAURANTS) (5.1% IN BOTH CPIS); TRANSPORT (6.1% IN THE CPI(A) AND 6.7% IN THE CPI(B)); FUEL AND LIGHT (6.2% AND 6.0%); AND MISCELLANEOUS GOODS (6.8% AND 6.5%).

ON THE OTHER HAND, RELATIVELY FASTER INCREASES IN PRICES WERE RECORDED FOR CLOTHING AND FOOTWEAR (9.7% IN THE CPI(A) AND 9.8% IN THE CPI(B)); MEALS AT RESTAURANTS (10.2% IN BOTH CPI'S); SERVICES (12.3% IN THE CPI(A) AND 11.1% IN THE CPI(B)); ALCOHOLIC DRINKS AND TOBACCO (13.0% AND 12.4%); AND HOUSING (15.1% AND 15.7%).

COMPARING OCTOBER 1992 WITH SEPTEMBER 1992, THE CPI(A) INCREASED BY 0.1% WHILE THE CPI(B) AND THE HANG SENG CPI INCREASED BY 0.4% AND 0.8% RESPECTIVELY. THIS COMPARISON WAS, HOWEVER, AFFECTED BY SEASONAL FACTORS.

THE INCREASES WERE MAINLY DUE TO HIGHER RENT FOR SOME PRIVATE HOUSING UNITS, HIGHER CHARGES FOR MEALS AT RESTAURANTS, AND A RISE IN THE PRICES OF CIGARETTES AND CHINESE NEWSPAPERS.

FOR THE THREE MONTHS ENDING OCTOBER 1992, THE CPI(A) WAS, ON AVERAGE, HIGHER BY 9.2% THAN IN THE SAME PERIOD LAST YEAR. THE CORRESPONDING FIGURE FOR THE CPI(B) WAS 9.8%.

FOR THE PERIOD FROM JANUARY TO OCTOBER 1992, THE CPI(A) AND THE CPI(B) WERE, ON AVERAGE, HIGHER BY 9.4% AND 9.6% RESPECTIVELY THAN IN THE CORRESPONDING PERIOD IN 1991.

FOR THE 12 MONTHS ENDING OCTOBER 1992, THE CPI(A) AND THE CPI(B) WERE, ON AVERAGE, HIGHER BY 9.6% AND 9.8% RESPECTIVELY THAN IN THE PRECEDING 12-MONTH PERIOD.

SEASONALLY ADJUSTED SERIES ARE ALSO AVAILABLE FOR THE INDICES. THE DESEASONALISED CPI(A) AND CPI(B) INCREASED AT AN AVERAGE RATE OF 0.7% AND 0.8% RESPECTIVELY PER MONTH DURING THE THREE MONTHS ENDING OCTOBER 1992.

THE CONSUMER PRICE INDEX REPORT

MORE DETAILS ARE GIVEN IN THE "CONSUMER PRICE INDEX REPORT" FOR OCTOBER 1992, WHICH IS AVAILABLE AT \$9 PER COPY FROM THE GOVERNMENT PUBLICATIONS SALES CENTRE, GENERAL POST OFFICE BUILDING, GROUND FLOOR, CONNAUGHT PLACE, HONG KONG; OR FROM THE CENSUS AND STATISTICS DEPARTMENT, 19TH FLOOR, WANCHAI TOWER 1, 12 HARBOUR ROAD, WAN CHAI, HONG KONG; OR FROM THE INFORMATION SERVICES DEPARTMENT, FRENCH MISSION BUILDING, 1 BATTERY PATH, HONG KONG FOR LOCAL AND OVERSEAS MAILINGS.

FOR ENQUIRIES ABOUT THE INDICES, PLEASE TELEPHONE THE CONSUMER PRICE INDEX SECTION OF THE CENSUS AND STATISTICS DEPARTMENT ON 805 6403.

DETAILS REGARDING THE HANG SENG CPI ARE CONTAINED IN THE HANG SENG CPI REPORT ISSUED BY THE ECONOMIC RESEARCH DEPARTMENT OF HANG SENG BANK LTD.

- - - - -

Table 1 Consumer Price Indices and Rates of Increase for October 1992
(Oct. 89 - Sep. 90 = 100)

<u>Component</u>	<u>CPI(A)</u>		<u>CPI(B)</u>		<u>Hang Seng CPI</u>		<u>Composite CPI</u>	
	<u>Index for Oct 92</u>	<u>% change over Oct 91</u>	<u>Index for Oct 92</u>	<u>% change over Oct 91</u>	<u>Index for Oct 92</u>	<u>% change over Oct 91</u>	<u>Index for Oct 92</u>	<u>% change over Oct 91</u>
Food	125.6	+7.7	126.9	+8.1	126.2	+8.7	126.2	+8.1
Meals bought away from home	132.3	+10.2	132.3	+10.2	129.5	+10.6	131.7	+10.3
Food, excluding meals bought away from home	118.9	+5.1	119.3	+5.1	120.7	+5.4	119.3	+5.1
Housing	138.1	+15.1	138.6	+15.7	137.0	+12.4	137.9	+14.5
Fuel and light	116.1	+6.2	115.4	+6.0	115.2	+5.4	115.7	+6.0
Alcoholic drinks and tobacco	164.2	+13.0	156.0	+12.4	152.6	+12.3	159.7	+12.7
Clothing and footwear	118.9	+9.7	120.0	+9.8	129.5	+10.3	123.0	+10.0
Durable goods	107.3	+1.8	107.1	+1.8	111.5	+3.8	108.4	+2.4
Miscellaneous goods	120.0	+6.8	117.8	+6.5	116.5	+5.6	118.2	+6.4
Transport	126.7	+6.1	126.7	+6.7	127.9	+7.0	127.0	+6.6
Services	136.1	+12.3	132.6	+11.1	127.0	+9.7	132.0	+11.1
All items	128.4	+9.5	128.4	+10.0	128.6	+9.5	128.5	+9.7

The 1989/90-based consumer price indices are based on the expenditure patterns derived from the 1989/90 Household Expenditure Survey. The CPI(A) is based on the expenditure pattern of about 50% of urban households in Hong Kong, which had an average monthly expenditure of \$2,500-\$9,999 a month in 1989/90. The CPI(B) is based on the expenditure pattern of the next 30% of urban households, which had an average monthly expenditure of \$10,000-\$17,499 in the same period. The Hang Seng CPI is based on the expenditure pattern of the next 10% of urban households, which had an average monthly expenditure of \$17,500-\$37,499 in 1989/90.

Whereas the CPI(A), CPI(B) and Hang Seng CPI are based on the expenditure patterns of groups of households with different magnitudes of household expenditure, the Composite CPI is compiled based on the expenditure pattern of all these households taken together. Thus, while the CPI(A), CPI(B) and Hang Seng CPI show the impact of consumer price changes on different groups of households, the Composite CPI shows the impact of consumer price changes on the household sector generally.

Table 2 Consumer Price Indices for October 1990 - October 1992
(Oct. 89 - Sep. 90 = 100)

<u>Year/month</u>	<u>CPI(A)</u>	<u>CPI(B)</u>	<u>Hang Seng CPI</u>	<u>Composite CPI</u>
1990 October	105.8	105.9	106.7	106.1
November	106.5	106.7	107.8	106.9
December	107.4	107.6	108.1	107.7
1991 January	108.3	108.4	108.6	108.4
February	110.3	110.1	110.2	110.2
March	111.9	111.1	110.7	111.3
April	113.9	113.0	112.0	113.1
May	114.0	113.6	113.4	113.7
June	114.6	114.1	113.9	114.2
July	115.4	114.8	113.9	114.8
August	116.0	115.3	114.6	115.4
September	116.8	116.1	115.8	116.3
October	117.2	116.8	117.4	117.1
November	117.7	117.6	118.7	117.9
December	118.1	118.3	118.5	118.3
1992 January	119.7	119.3	119.4	119.5
February	121.8	121.2	121.0	121.4
March	122.5	121.9	121.8	122.1
April	124.0	123.4	122.9	123.5
May	124.0	123.8	124.2	124.0
June	125.3	125.1	125.2	125.2
July	125.5	125.4	125.4	125.4
August	125.6	125.9	125.8	125.8
September	128.3	127.9	127.5	128.0
October	128.4	128.4	128.6	128.5

/CHART 1

Chart 1 Year-on-year Rates of Increase in CPI(A)

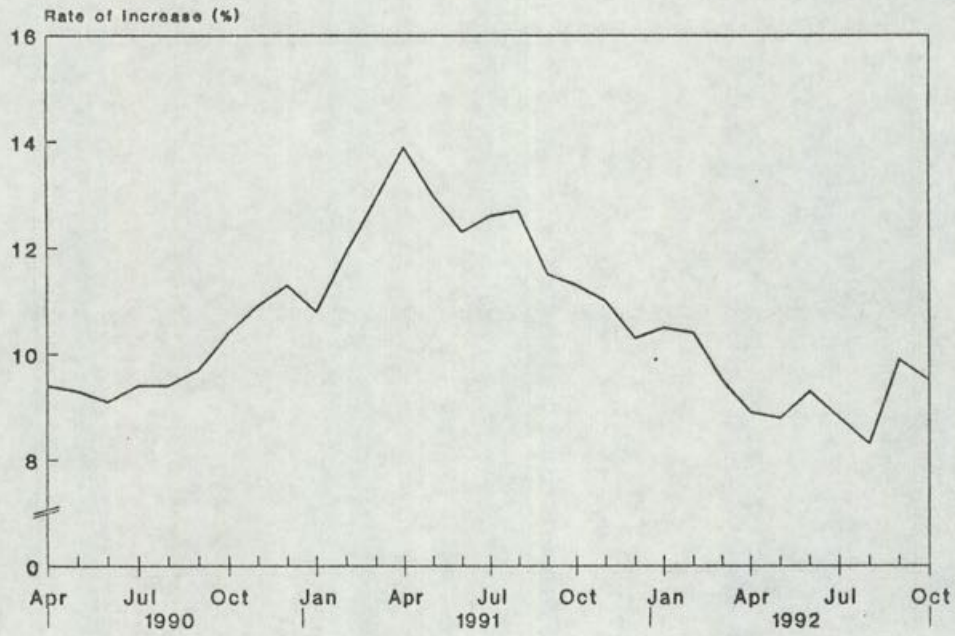


Chart 2 Year-on-year Rates of Increase in CPI(B)

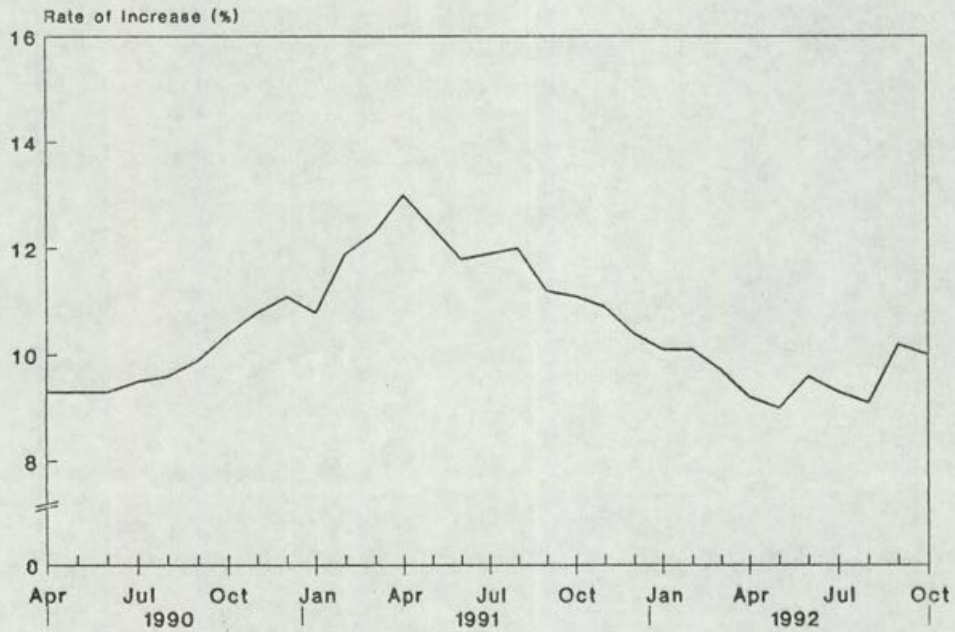


Chart 3 Year-on-year Rates of Increase in Hang Seng CPI

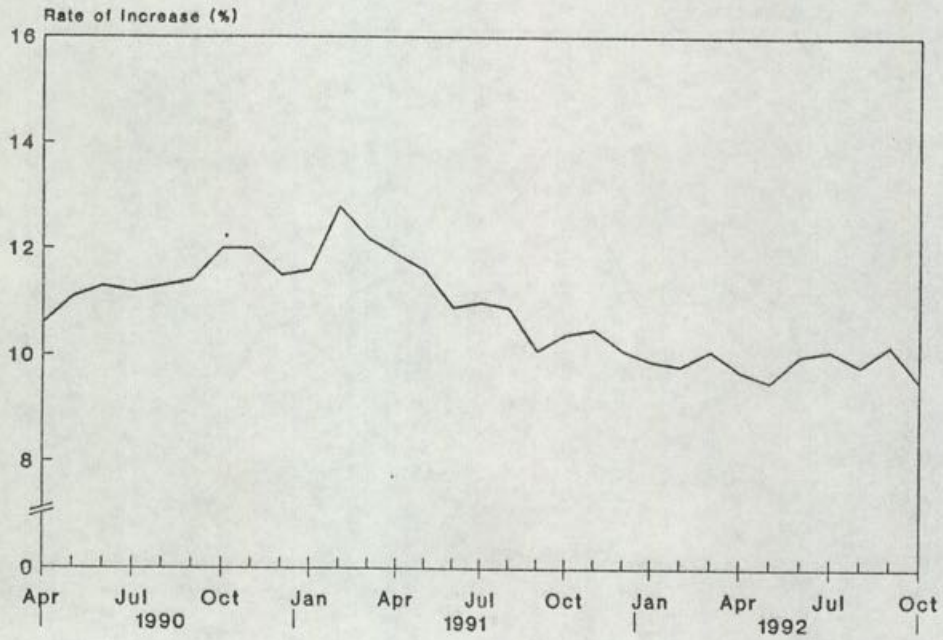
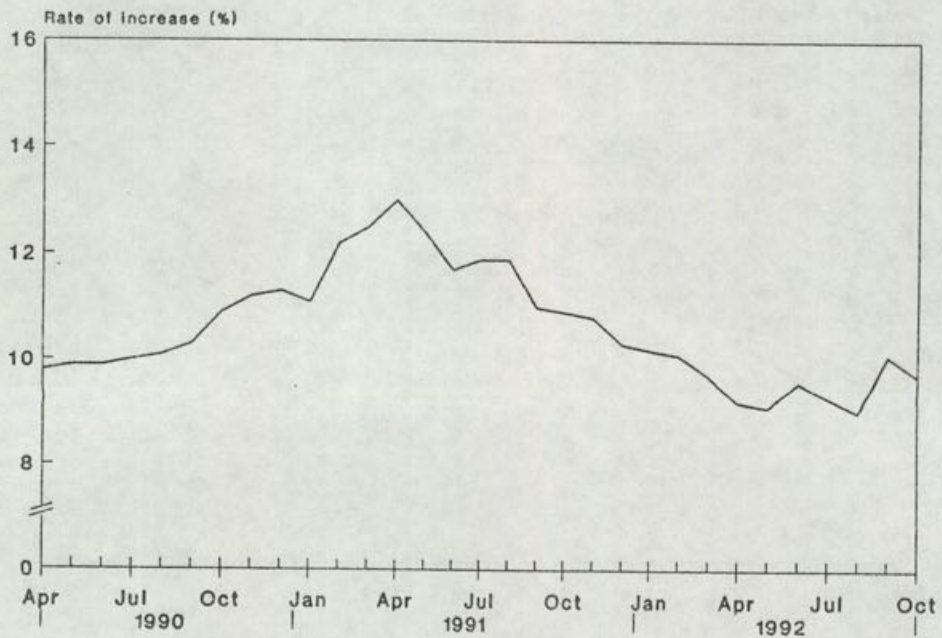


Chart 4 Year-on-year Rates of Increase in Composite CPI



PROVISIONAL TRADE FIGURES FOR OCTOBER

* * * * *

IN OCTOBER 1992, THE PERFORMANCE OF RE-EXPORTS REMAINED STRONG, WHILE DOMESTIC EXPORTS CONTINUED TO INCREASE.

IMPORTS ALSO GREW SHARPLY.

THESE ARE SHOWN IN THE PROVISIONAL TRADE FIGURES RELEASED TODAY (THURSDAY) BY THE CENSUS AND STATISTICS DEPARTMENT.

THE VALUE OF RE-EXPORTS ROSE BY \$16,825 MILLION OR 32.9% OVER A YEAR EARLIER TO \$67,923 MILLION IN OCTOBER 1992.

THE VALUE OF DOMESTIC EXPORTS ALSO INCREASED BY \$558 MILLION OR 2.6% TO \$21,854 MILLION.

TAKING RE-EXPORTS AND DOMESTIC EXPORTS TOGETHER, THE VALUE OF TOTAL EXPORTS IN OCTOBER GREW BY \$17,383 MILLION OR 24.0% OVER A YEAR EARLIER TO \$89,777 MILLION.

MEANWHILE, THE VALUE OF IMPORTS INCREASED BY \$20,739 MILLION OR 29.9% TO \$90,021 MILLION.

AS THE VALUE OF TOTAL EXPORTS WAS SLIGHTLY SMALLER THAN THAT OF TOTAL IMPORTS, A VISIBLE TRADE DEFICIT OF \$244 MILLION, EQUIVALENT TO 0.3% OF THE VALUE OF IMPORTS, WAS RECORDED IN OCTOBER 1992.

THIS COMPARED WITH A SURPLUS OF \$3,112 MILLION, EQUIVALENT TO 4.5% OF THE VALUE OF IMPORTS, RECORDED IN OCTOBER 1991.

IN THE FIRST 10 MONTHS OF 1992, THE VALUE OF RE-EXPORTS INCREASED BY \$133,185 MILLION OR 31.0% OVER A YEAR EARLIER TO \$563,240 MILLION.

THE VALUE OF DOMESTIC EXPORTS AMOUNTED TO \$192,139 MILLION, \$3,850 MILLION OR 2.0% HIGHER THAN IN THE FIRST 10 MONTHS OF 1991.

TAKING RE-EXPORTS AND DOMESTIC EXPORTS TOGETHER, THE VALUE OF TOTAL EXPORTS, AT \$755,379 MILLION IN THE FIRST 10 MONTHS OF 1992, WAS \$137,035 MILLION OR 22.2% HIGHER THAN A YEAR EARLIER.

THE VALUE OF IMPORTS INCREASED BY \$148,663 MILLION OR 23.5% TO \$779,956 MILLION.

A VISIBLE TRADE DEFICIT OF \$24,577 MILLION, EQUIVALENT TO 3.2% OF THE VALUE OF IMPORTS, WAS RECORDED IN THE FIRST 10 MONTHS OF 1992.

THIS COMPARED WITH A DEFICIT OF \$12,949 MILLION, EQUIVALENT TO 2.1% OF THE VALUE OF IMPORTS, RECORDED IN THE SAME PERIOD LAST YEAR.

COMMENTING ON THE OCTOBER TRADE FIGURES, A GOVERNMENT SPOKESMAN SAID WHILE RE-EXPORTS SURGED FURTHER, IT WAS ALSO ENCOURAGING TO NOTE THAT DOMESTIC EXPORTS HAD REGISTERED POSITIVE GROWTH FOR FIVE CONSECUTIVE MONTHS.

THURSDAY, NOVEMBER 26, 1992

- 12 -

THE SUSTAINED INCREASE IN IMPORTS RETAINED FOR LOCAL USE, BY 13.6% IN VALUE TERMS IN THE FIRST 10 MONTHS OF 1992 OVER A YEAR EARLIER, REFLECTED BOTH A ROBUST DOMESTIC DEMAND AND A FAVOURABLE OUTLOOK FOR DOMESTIC EXPORTS IN THE COMING MONTHS.

THE FOLLOWING TABLE PRESENTS THE PROVISIONAL TRADE FIGURES FOR OCTOBER 1992:

MERCHANDISE: DOMESTIC EXPORTS :	\$21,854 MILLION	
RE-EXPORTS :	\$67,923 MILLION	
TOTAL EXPORTS :	\$89,777 MILLION	
IMPORTS :	\$90,021 MILLION	
TRADE BALANCE :	\$244 MILLION	(IN DEFICIT)

COMPARATIVE FIGURES

LATEST 3 MONTHS	AUG 92 TO	AUG 91 TO	INCREASE	
	OCT 92	OCT 91	HK\$ MN.	%
	HK\$ MN.	HK\$ MN.		
DOMESTIC EXPORTS	63,817	62,186	1,631	2.6
RE-EXPORTS	193,226	148,434	44,792	30.2
TOTAL EXPORTS	257,043	210,620	46,423	22.0
IMPORTS	252,343	202,990	49,353	24.3
TRADE BALANCE	4,700	7,630	-2,930	

SAME MONTH LAST YEAR	OCTOBER	OCTOBER	INCREASE	
	1992	1991	HK\$ MN.	%
	HK\$ MN.	HK\$ MN.		
DOMESTIC EXPORTS	21,854	21,296	558	2.6
(% OF TOTAL EXPORTS)	(24.3%)	(29.4%)		
RE-EXPORTS	67,923	51,098	16,825	32.9
TOTAL EXPORTS	89,777	72,394	17,383	24.0
IMPORTS	90,021	69,282	20,739	29.9
TRADE BALANCE	-244	3,112	-3,356	

LAST MONTH	OCTOBER	SEPTEMBER	INCREASE	
	1992	1992	HK\$ MN.	%
	HK\$ MN.	HK\$ MN.		
DOMESTIC EXPORTS	21,854	21,129	725	3.4
(% OF TOTAL EXPORTS)	(24.3%)	(24.7%)		
RE-EXPORTS	67,923	64,361	3,562	5.5
TOTAL EXPORTS	89,777	85,490	4,287	5.0
IMPORTS	90,021	82,952	7,069	8.5
TRADE BALANCE	-244	2,538	-2,782	

/CALENDAR YEAR

- 13 -

CALENDAR YEAR TO-DATE	JAN-OCT	JAN-OCT	INCREASE	
	1992	1991	HK\$ MN.	%
	HK\$ MN.	HK\$ MN.		
DOMESTIC EXPORTS	192,139	188,289	3,850	2.0
(% OF TOTAL EXPORTS)	(25.4%)	(30.5%)		
RE-EXPORTS	563,240	430,055	133,185	31.0
TOTAL EXPORTS	755,379	618,344	137,035	22.2
IMPORTS	779,956	631,293	148,663	23.5
TRADE BALANCE	-24,577	-12,949	-11,628	

LAST 12 MONTHS	NOV 91 TO	NOV 90 TO	INCREASE	
	OCT 92	OCT 91	HK\$ MN.	%
	HK\$ MN.	HK\$ MN.		
DOMESTIC EXPORTS	234,894	230,379	4,515	2.0
RE-EXPORTS	668,027	509,521	158,506	31.1
TOTAL EXPORTS	902,921	739,900	163,021	22.0
IMPORTS	927,645	754,747	172,898	22.9
TRADE BALANCE	-24,724	-14,847	-9,877	

- - - - 0 - - - -

SCA WELCOMES ELSIE TU'S MOVE

* * * * *

THE SECRETARY FOR CONSTITUTIONAL AFFAIRS, MR MICHAEL SZE, TODAY (THURSDAY) WELCOMED MRS ELSIE TU'S MOVE OF PUTTING FORWARD PROPOSALS ON FUNCTIONAL CONSTITUENCIES, HER COMMENTS ON THE ELECTION COMMITTEE AND OTHER ELEMENTS OF THE GOVERNOR'S CONSTITUTIONAL PACKAGE.

RESPONDING TO PRESS ENQUIRIES, MR SZE SAID THE CONSTITUTIONAL AFFAIRS BRANCH WOULD NEED TO STUDY THE PROPOSALS WITH CARE.

"ARRANGEMENTS HAVE BEEN MADE TO DISCUSS THEM IN DETAIL WITH MRS TU, AS WE HAVE DONE WITH OTHERS WHO HAVE PUT FORWARD ALTERNATIVE PROPOSALS," HE SAID.

"BUT ONE THING I CAN SAY IS THAT MRS TU'S PAPER HAS HIGHLIGHTED THE DIFFICULTIES WE FACE IN TRYING TO COME UP WITH PROPOSALS ON FUNCTIONAL CONSTITUENCIES AND THE ELECTION COMMITTEE THAT WILL BE REGARDED BY THE COMMUNITY AS FAIR, OPEN AND ACCEPTABLE."

MR SZE SAID HE HOPED THAT THESE PROPOSALS WOULD ENCOURAGE OTHER PEOPLE TO COME FORWARD WITH COMMENTS AND THEIR OWN IDEAS FOR CONSTITUTIONAL DEVELOPMENT.

- - - - 0 - - - -

MORE EFFECTIVE CONTROL ON WASTEWATER DISCHARGE

* * * * *

MORE EFFECTIVE CONTROL OVER THE DISCHARGE OF WASTEWATER IS PROPOSED TO MAKE HONG KONG A CLEANER AND GREENER PLACE TO LIVE IN.

THE WATER POLLUTION CONTROL (AMENDMENT) BILL, TO BE GAZETTED TOMORROW (FRIDAY), SEEKS TO ADD REGULATION-MAKING POWER TO ENABLE THE DIRECTOR OF ENVIRONMENTAL PROTECTION TO REQUIRE THE CONNECTION OF WASTEWATER TO PUBLIC SEWERAGE AND THE PROPER MAINTENANCE OF PRIVATE WASTEWATER TREATMENT FACILITIES.

UNDER REGULATIONS TO BE MADE UNDER THE AMENDMENT BILL, PROPERTY OWNERS MAY BE REQUIRED BY SERVICE OF A NOTICE TO CONVEY WASTEWATER TO A TERMINAL MANHOLE.

THE GOVERNMENT MAY THEN CONNECT UP THE MANHOLE TO THE NEW PUBLIC SEWERAGE WHICH IS BEING BUILT IN PHASES TO COLLECT WASTEWATER FOR TREATMENT BEFORE DISPOSAL.

A GOVERNMENT SPOKESMAN SAID MOST OF PREMISES IN THE URBAN AREA AND NEW TOWNS WERE PROVIDED WITH TERMINAL MANHOLES. OWNERS OF THESE PROPERTIES WILL UNLIKELY BE AFFECTED BY THE PROPOSED STATUTORY REQUIREMENT.

"IN THE CASE OF SMALL HOUSES LOCATED IN UNSEWERED AREAS, MODIFICATIONS CAN BE MADE TO CONVERT THE EXISTING SEPTIC TANKS TO TERMINAL MANHOLES AT A MODEST COST," THE SPOKESMAN SAID.

OTHER MAIN PROVISIONS IN THE AMENDMENT BILL ARE AS FOLLOWS:

- * OWNERS OF PROPERTY WITH PRIVATE WASTEWATER TREATMENT FACILITIES IN WATER CONTROL ZONES MAY BE REQUIRED BY NOTICE TO CARRY OUT MAINTENANCE AND REPAIR WORKS TO THEIR TREATMENT FACILITIES. THIS WILL ENSURE THAT PRIVATE TREATMENT FACILITIES ARE PROPERLY MAINTAINED AND WILL NOT CAUSE POLLUTION TO NEARBY STREAMS AND BEACHES.
- * THE PENALTY FOR MAKING ILLEGAL DISCHARGES OF WASTE OR POLLUTING MATTERS IN A WATER CONTROL ZONE WILL BE EXTENDED TO INCLUDE A MAXIMUM OF SIX MONTHS' IMPRISONMENT. THE CURRENT MAXIMUM PENALTY IS A FINE OF \$100,000 FOR FIRST CONVICTION, \$200,000 FOR SECOND OR SUBSEQUENT CONVICTION PLUS \$5,000 FOR EACH DAY DURING WHICH THE OFFENCE HAS CONTINUED.
- * A SEPARATE PENALTY PROVISION WILL BE CREATED FOR THE DISCHARGE OF POISONOUS AND NOXIOUS MATTERS INTO COMMUNAL SEWERS OR DRAINS. THE MAXIMUM PENALTY FOR THE NEW OFFENCE IS A FINE OF \$200,000 AND ONE YEAR IMPRISONMENT FOR FIRST CONVICTION, AND A FINE OF \$500,000 AND TWO YEARS' IMPRISONMENT FOR SECOND OR SUBSEQUENT CONVICTION PLUS \$20,000 FOR EACH DAY THE OFFENCE HAS CONTINUED.

* REGULATIONS WILL BE MADE FOR THE REGISTRATION OF PERSONS TO OPERATE AND MAINTAIN COMMERCIAL WASTEWATER TREATMENT FACILITIES. THE PROPOSED REGULATIONS WILL NOT BE BROUGHT INTO EFFECT UNTIL SUFFICIENT TRAINED PERSONNEL ARE AVAILABLE.

IN THE EVENT THAT A PROPERTY OWNER HAS FAILED TO COMPLETE THE REQUIRED WORKS ON WASTEWATER CONNECTION OR PRIVATE TREATMENT FACILITIES WITHIN SPECIFIED TIME, THE NEW REGULATIONS WILL ALSO EMPOWER THE GOVERNMENT TO CARRY OUT THE WORKS AND RECOVER THE COST FROM HIM.

THE GOVERNMENT CAN ALSO CREATE EASEMENT FOR THE CONSTRUCTION OF SEWERS, DRAINS AND RELATED WORKS.

COMPENSATION WILL BE PROVIDED FOR THE LOSS OF VALUE OF LAND DUE TO THE CREATION OF AN EASEMENT AND DAMAGE CAUSED DURING ENTRY INTO PROPERTY OR THE CARRYING OUT OF WORKS.

THE AMENDMENT BILL WILL BE TABLED IN THE LEGISLATIVE COUNCIL NEXT MONTH FOR FIRST AND SECOND READINGS.

- - - - 0 - - - -

CAMERAS TO DETECT RED LIGHT JUMPING

* * * * *

THE TRANSPORT DEPARTMENT WILL INSTALL CAMERAS AT SIGNALISED ROAD JUNCTIONS WHERE RED LIGHT JUMPING IS FOUND TO BE MOST FREQUENT TO DETECT VEHICLES IGNORING RED LIGHT SIGNALS.

THE CAMERAS ARE INSTALLED UNDER A ONE-YEAR PILOT SCHEME WHICH WILL START NEXT MONTH TO ENHANCE ROAD SAFETY, THE SENIOR ENGINEER OF THE ROAD SAFETY AND STANDARDS DIVISION OF THE DEPARTMENT, MR CHING KAM-CHEONG, SAID TODAY (THURSDAY).

EXPLAINING DETAILS OF THE SCHEME, MR CHING SAID THE CAMERAS WOULD BE INSTALLED ROTATIONALLY AT ROAD JUNCTIONS WHERE RIGHT-ANGLED COLLISIONS WERE FREQUENT.

LAST YEAR, 2,932 ACCIDENTS OCCURRED AT SIGNALISED ROAD JUNCTIONS. OF THESE, ABOUT 12 PER CENT MIGHT HAVE BEEN DUE TO RED LIGHT JUMPING, MR CHING SAID.

"RED LIGHT JUMPING IS A SERIOUS OFFENCE. DRIVERS OR VEHICLE OWNERS ARE LIABLE TO A MAXIMUM FINE OF \$5,000 AND THREE MONTHS' IMPRISONMENT ON FIRST CONVICTION AND A MAXIMUM FINE OF \$10,000 AND SIX MONTHS' IMPRISONMENT FOR SUBSEQUENT CONVICTIONS," MR CHING SAID.

"IN ADDITION, THREE DRIVING-OFFENCE POINTS WILL ALSO BE INCURRED", HE SAID.

THE SYSTEM COMPRISES THREE CRUCIAL ELEMENTS - A CAMERA UNIT, A DETECTOR/SENSOR UNIT AND A CONTROL UNIT.

THE CAMERA IS MOUNTED ON A POLE OVERSEEING THE JUNCTION. THE DETECTORS ARE LAID AT SUITABLE DISTANCE BEYOND THE STOP LINE AND THE SENSORS ARE LINKED WITH THE TRAFFIC LIGHT SIGNAL ASPECTS.

THE CAMERA WILL BE SET TO A STANDBY MODE ONLY DURING THE RED PHASE OF THE TRAFFIC LIGHT SIGNAL CYCLE. VEHICLES WILL BE SPOTTED BY THE DETECTORS AS THEY PASS THE STOP LINE AND IGNORED THE RED LIGHT.

IF A VEHICLE IS DETECTED DURING THIS PERIOD, THE CONTROL UNIT WILL IMMEDIATELY TRIGGER THE CAMERA TO TAKE CONSECUTIVELY TWO PHOTOGRAPHS OF THE VEHICLE.

THE TWO PHOTOGRAPHS WILL SHOW THE OFFENDING VEHICLE IN MOTION AND THE RED SIGNAL LIGHT ASPECT.

OTHER KEY INFORMATION SUCH AS TIME, DATE, LOCATION AND SPEED OF THE OFFENDING VEHICLE WILL ALSO BE PRINTED ON THE PHOTOGRAPHS.

THE PHOTOGRAPHS WILL PROVIDE A HARD EVIDENCE FOR THE POLICE TO PROSECUTE THE "RED-LIGHT RUNNERS".

IF A SECOND CAR VIOLATES THE SIGNAL BEFORE THE SECOND PHOTOGRAPH OF THE PRECEDING CAR HAS BEEN SHOT, THE THIRD AND FOURTH PHOTOGRAPHS WILL THEN BE TAKEN.

THE ALL-WEATHER SYSTEM IS OPERATIONAL ROUND-THE-CLOCK.

MR CHING SAID THE SYSTEM WAS NOT INTENDED AS A TRAP TO MOTORISTS AS LONG AS THEY OBSERVE THE TRAFFIC LIGHTS. HOWEVER, OFFENDERS SPOTTED BY THE SYSTEM WOULD BE PROSECUTED.

- - - - 0 - - - -

FIRE SERVICES PUBLICISES ITS PERFORMANCE PLEDGE

* * * *

THE FIRE SERVICES DEPARTMENT TODAY (THURSDAY) ANNOUNCED ITS PERFORMANCE PLEDGE WHICH MADE IT CLEAR TO THE PUBLIC THE STANDARDS OF ITS FIRE AND AMBULANCE SERVICES.

SPEAKING AT A PRESS CONFERENCE, THE DIRECTOR OF FIRE SERVICES, MR LAM CHEK-YUEN, SAID THE PERFORMANCE PLEDGE FORMED PART OF THE 'SERVING THE COMMUNITY' SCHEME, WHICH WAS ANNOUNCED BY THE GOVERNOR IN HIS POLICY ADDRESS IN OCTOBER.

IT COVERS THE RESPONSE TO FIRE CALLS AND EMERGENCY AMBULANCE CALLS, AND COMPLAINTS ON FIRE HAZARDS OR DANGEROUS GOODS.

ON FIRE CALLS INVOLVING BUILDINGS, MR LAM POINTED OUT THAT THE STANDARD RESPONSE TIME FOR BUILT-UP AREAS IS SIX MINUTES AND FOR REMOTE AREAS OR ISOLATED DEVELOPMENTS FROM NINE TO 23 MINUTES.

"IN 1991, WE MET 82.3 PER CENT OF THESE CALLS WITHIN THIS RESPONSE TIME AND FOR 1992/93, OUR TARGET IS TO RAISE IT TO 85 PER CENT," HE SAID.

TURNING TO AMBULANCE CALLS, MR LAM SAID A STANDARD TRAVELLING TIME OF 10 MINUTES HAD BEEN SET FOR AN AMBULANCE TO ARRIVE AT SCENES AFTER A CALL FOR HELP WAS RECEIVED BY THE DEPARTMENT'S COMMUNICATION CENTRE.

LAST YEAR, AMBULANCES MANAGED TO MEET 91.1 PER CENT OF EMERGENCY CALLS BY ARRIVING AT SCENES WITHIN 10 MINUTES, AND THE DEPARTMENT AIMS TO ACHIEVE A TARGET OF 91.5 PER CENT FOR 1992/93.

THE PUBLIC ARE WELCOME TO PROVIDE INFORMATION ON SUSPECTED FIRE HAZARDS OR COMPLAINTS ABOUT ILLEGAL MANUFACTURE, STORAGE OR CONVEYANCE OF DANGEROUS GOODS.

THEY CAN EITHER TELEPHONE THE DEPARTMENT'S HOTLINE ON 723 8787 OR WRITE TO A FIRE PROTECTION REGIONAL OFFICE.

"ON RECEIPT OF A TELEPHONE COMPLAINT ON DANGEROUS GOODS OR FIRE HAZARDS WITH IMMINENT DANGER, WE WILL INVESTIGATE IT WITHIN 24 HOURS," MR LAM SAID.

"WE HAVE BEEN MONITORING OUR PERFORMANCES IN ALL THREE AREAS AND WILL CONTINUE TO DO SO.

"WHEREAS WE HAVE SET THESE STANDARDS FOR ADMINISTRATIVE REASONS IN THE PAST, WE WILL MAKE PUBLIC THE MEASURE OF OUR PERFORMANCES AT LEAST ON AN ANNUAL BASIS," HE SAID.

THE DEPARTMENT, HE ADDED, WELCOMED ANY COMMENTS OR SUGGESTIONS FROM THE PUBLIC CONCERNING THESE SERVICES.

HE ALSO ASSURED THE PUBLIC THAT THEY HAD A RIGHT TO A FULL AND PROMPT EXPLANATION ON OCCASIONS THAT THE SERVICE WAS UNABLE TO RESPOND WITHIN ITS TARGETS.

"SOME OF THE CONSTRAINTS TO EMERGENCY SERVICES, SUCH AS TRAFFIC CONDITIONS, ARE ALREADY WELL-KNOWN AND ACCEPTED BY THE PUBLIC," HE SAID.

AN EXPLANATORY LEAFLET WAS PUBLISHED AND COPIES WILL SOON BE AVAILABLE AT THE DISTRICT OFFICES, OFFICES OF VARIOUS HOUSING ESTATES AND THE FIRE SERVICES DEPARTMENT.

ACTION TO CLAMP DOWN EXEMPTED HOUSE IRREGULARITIES

* * * * *

THE LAND AUTHORITY IS TO STEP UP ENFORCEMENT ACTION IN YUEN LONG AGAINST NEW TERRITORIES EXEMPTED HOUSES NOT COMPLYING WITH THE LAW.

A SPOKESMAN FOR THE YUEN LONG DISTRICT LANDS OFFICE SAID TODAY (THURSDAY) IRREGULARITIES IN EXEMPTED HOUSES IN THE DISTRICT WERE ON THE INCREASE, AND THE SITUATION AT PRESENT CALLED FOR URGENT ACTIONS.

HE SAID ENFORCEMENT ACTION WOULD BE TAKEN TO WEED OUT IRREGULARITIES FOUND IN EXEMPTED HOUSES, SUCH AS ENCLOSED ROOF-TOP STRUCTURES, ENCLOSED BALCONIES, OPEN-SIDED ROOF-TOP STRUCTURES EXCEEDING 50 PER CENT OF BUILD-OVER AREA, GROUND FLOOR EXTENSIONS AND ENLARGED CANOPIES.

"THE FIRST TARGETS OF THE EXERCISE ARE TING FOOK VILLAS AND CHUN HING SAN TSUEN. EXEMPTED HOUSES WITH IRREGULARITIES IN OTHER LOCATIONS, SUCH AS CHUN WAH GARDEN, KWAN LOK SAN TSUEN, MAN YUEN TSUEN AND CHUK YUEN TSUEN, WILL BE THE NEXT TARGETS AT A LATER STAGE," HE SAID.

THE SPOKESMAN SAID ADVISORY LETTERS WERE BEING SENT TO REGISTERED LANDOWNERS INFORMING THEM OF THE IRREGULARITIES AND REQUESTING THEM TO TAKE IMMEDIATE REMEDIAL ACTION.

"THE ADVISORY LETTERS WILL BE REGISTERED WITH THE LAND OFFICE OF THE REGISTRAR GENERAL'S DEPARTMENT IN YUEN LONG AND WILL BE DEREGISTERED ON COMPLETION OF RECTIFICATION ACTION BY THE LANDOWNERS CONCERNED.

"IF THE IRREGULARITIES STILL PERSIST AFTER FINAL WARNING LETTERS ARE SENT, DEMOLITION ACTION WILL BE TAKEN BY THE GOVERNMENT TERM CONTRACTOR AND THE DEMOLITION COST WOULD BE RECOVERED FROM THE LANDOWNERS," HE WARNED.

THE SPOKESMAN SAID THE CRITERIA IN RESPECT OF THE EXEMPTED HOUSES ARE SET OUT IN THE BUILDING ORDINANCE (APPLICATION TO THE NEW TERRITORIES) ORDINANCE.

THESE INCLUDE THE HEIGHT LIMIT OF 8.23 METRES (27 FEET) AND THE ROOF-OVER AREA LIMIT OF 65.03 METRES (700 SQUARE FEET).

- - - - 0 - - - -

BERTHING AND EMBARKATION FEES TO BE REVISED

* * * * *

THE BERTHING FEE FOR VESSELS AND THE EMBARKATION FEE FOR PASSENGERS USING THE HK-MACAU FERRY TERMINAL AND THE CHINA FERRY TERMINAL WILL BE REVISED FROM JANUARY 1 NEXT YEAR, THE DEPUTY DIRECTOR OF MARINE, MR ALLAN PYRKE ANNOUNCED TODAY (THURSDAY).

MR PYRKE SAID: "THE EXECUTIVE COUNCIL APPROVED THE REVISION OF THE TWO FEE ITEMS ON NOVEMBER 17 THIS YEAR.

/"THE BERTHING

"THE BERTHING FEE FOR DYNAMICALLY SUPPORTED CRAFT INCLUDING JETFOIL, HYDROFOIL, CATAMARAN AND HOVERFERRY, AND VESSELS OTHER THAN FERRIES WILL INCREASE FROM \$2.60 TO \$3 PER TON WHILE THE FEE FOR FERRIES WILL INCREASE FROM \$1.30 TO \$1.50 PER TON, REPRESENTING AN INCREASE OF 15 PER CENT.

"THE EMBARKATION FEE FOR PASSENGERS WILL BE INCREASED FROM \$21 TO \$25, REPRESENTING AN INCREASE OF 19 PER CENT.

"IT IS EXPECTED THAT THE EFFECT OF THE INCREASE WILL BE TO RAISE PASSENGER FARES BY TWO TO FOUR PER CENT. FOR EXAMPLE, THE AVERAGE JETFOIL FARE TO MACAU WILL PROBABLY INCREASE FROM \$121 TO \$125 AND THE CATAMARAN FARE TO ZHONGSHAN FROM \$152 TO \$156."

THE REVISION OF THE FEES ARE NECESSARY TO RECOVER THE FULL COST OF OPERATING THE GOVERNMENT-OWNED HK-MACAU FERRY TERMINAL AND THE CHINA FERRY TERMINAL AND TO PROVIDE A REASONABLE RETURN ON THE CAPITAL EMPLOYED.

"THE TWO TERMINALS ARE OPERATED AS PUBLIC UTILITIES AND THE GOVERNMENT RECOVERS ITS COSTS AND OBTAINS A RETURN ON ITS INVESTMENT BY CHARGING FEES TO FERRY OPERATIONS AND PASSENGERS," MR PYRKE SAID.

THE BERTHING FEE AND THE EMBARKATION FEE WERE LAST REVISED IN APRIL AND OCTOBER LAST YEAR RESPECTIVELY.

DETAILS OF THE REVISION OF THE TWO FEE ITEMS WILL BE GAZETTED TOMORROW (FRIDAY).

- - - - 0 - - - -

CIVIC EDUCATION DAY IN SHA TIN

* * * * *

AN ANNUAL CIVIC EDUCATION DAY WILL BE HELD IN SHA TIN THIS SUNDAY (NOVEMBER 29) TO ENHANCE PUBLIC AWARENESS OF HUMAN RIGHTS.

ORGANISED BY THE COMMITTEE ON THE PROMOTION OF CIVIC EDUCATION, THE THEME WILL BE: "KNOW MORE ABOUT HUMAN RIGHTS, ENJOY FULLY YOUR OWN RIGHTS".

IT WILL BE HELD FROM 10 AM TO 5 PM AT THE ATRIUM GALLERY IN PHASE III OF SHA TIN NEW TOWN PLAZA.

THE CHAIRMAN OF THE COMMITTEE, DR DANIEL TSE, AND THE SECRETARY FOR HOME AFFAIRS, MR MICHAEL SUEN, WILL OFFICIATE AT THE OPENING CEREMONY.

THE CEREMONY WILL BE FOLLOWED BY AN INTER-VASITY DEBATE BETWEEN THE CHINESE UNIVERSITY OF HONG KONG AND THE UNIVERSITY OF HONG KONG.

THE TOPIC FOR DEBATE WILL BE "HUMAN RIGHTS SHOULD BE BASED ON PUBLIC INTEREST", THE ADJUDICATORS WILL COMPRISE LEGISLATIVE COUNCILLORS, MRS PEGGY LAM AND MR JAMES TO, AND ASSOCIATE HEAD OF THE DEPARTMENT OF APPLIED SOCIAL STUDIES OF THE CITY POLYTECHNIC OF HONG KONG, MR CHAN WING-TAI.

OTHER ACTIVITIES WILL BE A COMPUTER GAME DESIGNED TO ASSESS PARTICIPANTS' KNOWLEDGE OF THE SUBJECT.

A NEWLY PUBLISHED COMIC BOOK ENTITLED "THE BILL OF RIGHTS AS TOLD BY A WISE OLD WOMAN" WILL BE DISTRIBUTED.

THE FULL-COLOUR BOOK USES LIVELY CARTOONS AND SIMPLE LANGUAGE TO EXPLAIN THE HONG KONG BILL OF RIGHTS.

A SPOKESMAN FOR THE COMMITTEE SAID IN ORDER TO ENSURE THAT THE BILL OF RIGHTS COULD BE IMPLEMENTED MORE EFFECTIVELY, IT WAS ESSENTIAL THAT HONG KONG PEOPLE WERE FAMILIAR WITH THE CONCEPT.

FROM SUNDAY, ALL THE DISTRICTS' CIVIC EDUCATION COMMITTEES WILL BE ORGANISING A SERIES OF ACTIVITIES, INCLUDING EXHIBITIONS, SEMINARS, AND DEBATES, TO PROMOTE THE THEME, HE ADDED.

"WE HOPE ALL THESE EFFORTS WILL ENABLE THE PUBLIC TO KNOW MORE ABOUT THEIR OWN RIGHTS UNDER THE PROTECTION OF THE LAW," THE SPOKESMAN SAID.

THE CIVIC EDUCATION DAY IS CO-ORGANISED BY THE SHA TIN DISTRICT BOARD'S WORKING GROUP ON CIVIC EDUCATION, WITH SPONSORSHIP BY THE APPLE COMPUTER INTERNATIONAL LTD AND HONG KONG TELECOM.

ENQUIRIES CAN BE MADE OF THE COMMITTEE ON TEL 835 1376 OR 835 1380.

- - - - -

ATTENTION NEWS EDITORS:

MEDIA REPRESENTATIVES ARE INVITED TO COVER THE CIVIC EDUCATION DAY WHICH WILL BEGIN AT 10 AM ON SUNDAY (NOVEMBER 29) AT THE ATRIUM GALLERY IN PHASE III OF NEW TOWN PLAZA, SHA TIN.

- - - - 0 - - - -

CAMP FOR DISABLED AT WEEKEND

* * * *

MORE THAN 500 DISABLED PEOPLE AND THEIR FAMILY MEMBERS WILL SHARE THE FUN AND THEIR FAMILY LIFE EXPERIENCES AT AN OVERNIGHT CAMP FOR THE DISABLED AT WU KWAI SHA YOUTH VILLAGE ON SATURDAY (NOVEMBER 28).

THE CAMP, WHICH IS A HIGHLIGHT OF THE "CARE AND SHARE PROGRAMME" ORGANISED BY THE SOCIAL WELFARE DEPARTMENT, IS AIMED AT PROMOTING THE SPIRIT OF INTEGRATION BETWEEN THE ABLED AND THE DISABLED.

A "TAKE-OFF CEREMONY OF LOVE BALLOONS" WILL BE HELD ON SUNDAY TO MARK THE CLOSING OF THE EVENT.

/OFFICIATING AT

THURSDAY, NOVEMBER 26, 1992

- 21 -

OFFICIATING AT THE CLOSING CEREMONY WILL BE THE CHAIRMAN OF REHABILITATION DEVELOPMENT CO-ORDINATING COMMITTEE, DR RAYMOND WU WAI-YUNG, AND THE ASSISTANT DIRECTOR OF SOCIAL WELFARE, MR ANTHONY CHAN WAI-KWAN.

- - - - -

ATTENTION NEWS EDITORS:

MEDIA REPRESENTATIVES ARE INVITED TO COVER THE CLOSING CEREMONY TO BE HELD AT WU KWAI SHA YOUTH VILLAGE AT 11 AM ON SUNDAY (NOVEMBER 29).

A PRESS COACH WILL DEPART FROM TAI WAI KCR STATION TO THE YOUTH VILLAGE AT 10.15 AM SHARP. THOSE WISHING TO MAKE USE OF THE TRANSPORT SHOULD ASSEMBLE OPPOSITE THE TAXI STAND OUTSIDE THE STATION.

AN INFORMATION OFFICER OF THE SOCIAL WELFARE DEPARTMENT WILL BE ON HAND TO HELP.

- - - - 0 - - - -

FINANCE COMMITTEE TO MEET TOMORROW

* * * * *

THE FINANCE COMMITTEE WILL HOLD A SPECIAL MEETING ON NEW AIRPORT FUNDING AT 2.30 PM TOMORROW (FRIDAY) IN THE LEGISLATIVE COUNCIL CHAMBER.

MEMBERS OF THE PUBLIC ARE WELCOME TO OBSERVE THE PROCEEDINGS FROM THE CHAMBER'S PUBLIC GALLERIES. THEY MAY MAKE RESERVATIONS BY CALLING 869 9492.

- - - - -

ATTENTION NEWS EDITORS:

THE COMMITTEE'S PAPERS ARE AVAILABLE FOR ADVANCE READING AFTER 2.30 PM AT THE PRESS ROOM ON THE FIRST FLOOR OF THE LEGISLATIVE COUNCIL BUILDING. PLEASE NOTE THAT THE CONTENTS OF THE PAPERS WILL BE EMBARGOED FOR USE UNTIL THE MEETING ENDS.

- - - - 0 - - - -

THURSDAY, NOVEMBER 26, 1992

- 22 -

HONG KONG GOVERNMENT EXCHANGE FUND
MONEY MARKET OPERATIONS
* * * * *

	\$ MILLION -----
OPENING BALANCE IN THE ACCOUNT	1,500
REVERSAL OF LAF	NIL
BALANCE AFTER REVERSAL OF LAF	1,500
NET INJECTION/WITHDRAWAL TODAY	NIL
EFFECT OF LAF TODAY	NIL
CLOSING BALANCE IN THE ACCOUNT	1,500

LAF RATE 2.00 BID/4.00 OFFER TWI 113.4 *+0.0* 26.11.92

HONG KONG GOVERNMENT EXCHANGE FUND

EF BILLS		HONG KONG GOVERNMENT BONDS				
TERMS	YIELD	TERM	ISSUE	COUPON	PRICE	YIELD
1 WEEK	2.90 PCT	15 MONTHS	2402	5.50	101.25	4.48
1 MONTH	3.68 PCT	18 MONTHS	2405	5.50	101.22	4.69
3 MONTHS	3.78 PCT	21 MONTHS	2408	4.375	99.24	4.89
6 MONTHS	3.85 PCT	24 MONTHS	2411	4.625	99.24	5.10
12 MONTHS	4.35 PCT					

TOTAL TURNOVER OF BILLS AND BONDS - 9,669 MN

CLOSED 26 NOVEMBER 1992

- - - - 0 - - - -