



## DAILY INFORMATION BULLETIN

ISSUED BY GOVERNMENT INFORMATION SERVICES  
BEACONSFIELD HOUSE, HONG KONG. TEL.: 2842 8777

Friday, February 23, 1996

<u>Contents</u>	<u>Page No.</u>
Improvements to law on evidence proposed .....	1
Consumer Price Indices for January .....	3
Analysis of Hong Kong's re-export trade statistics .....	10
Free Legal Advice Scheme extended .....	14
Environmental Study for Tsing Yi North Coastal Road .....	14
Four lots of land up for auction .....	15
Two nominations received for DB by-election .....	16
Contractors summonsed for alleged breach of employment law .....	16
Direct supervision gives strength to HK penal system .....	17
Tenders for footbridge improvement works invited .....	18
SWD distributes blankets to street sleepers .....	19
Hong Kong Monthly Digest of Statistics now on sale .....	19
Application for part-time teachers invited .....	20
Hong Kong Monetary Authority money market operations .....	21

### Improvements to law on evidence proposed

\* \* \* \* \*

The Government will introduce into the Legislative Council amending legislation to improve on the law governing the taking of evidence in Hong Kong in relation to criminal proceedings in overseas jurisdictions.

The amendments also touch on the rules of evidence relating to corroboration in respect of sexual offences.

The proposals are set out in the Evidence (Amendment) Bill 1996 published in the Government Gazette today (Friday).

On the first proposal, a government spokesman explained that the courts at present were subject to restrictions when taking evidence for overseas jurisdictions.

"The restrictions are that the request must be made by or on behalf of a 'court or tribunal', and that the evidence can only be obtained for proceedings which have been instituted or which are likely to be instituted," he said.

The spokesman pointed out that these restrictions created particular difficulty in relation to civil law jurisdictions.

"In a recent case relating to a request from Italy, the Hong Kong court held that it did not have jurisdiction to give effect to the request as it was issued by a magistrate performing the function of public prosecutor under the Italian law and not by or on behalf of a court or tribunal.

"In addition, the restrictions prevent evidence from being obtained for the purpose of proceedings before an examining magistrate who, under the European system, conducts the investigation.

"In such case, it cannot be said with certainty that, if the evidence in question is provided, proceedings are likely to be instituted," he said.

He noted that the inability to respond satisfactorily to requests for juridical assistance would damage the reputation of Hong Kong as an important legal, financial and commercial centre.

Clauses in the Bill to be introduced provide for definition of terms to clarify the range of matters which may be covered in the taking of evidence on request from another jurisdiction.

They also deal with matters in respect of which the High Court must be satisfied before it may exercise the new powers conferred upon it; the forms of assistance that the High Court may provide in response to a request for such assistance by another jurisdiction; and the restrictions subject to which the assistance may be provided.

On the proposed improvements to corroboration rules in respect of sexual offences, the spokesman explained that there were at present two rules.

"One requires that, where the allegation against an accused is supported by one witness only, that witness's evidence shall be corroborated in some material particular by evidence implicating the accused.

"In the absence of such corroborative evidence, the accused cannot properly be convicted of the offence alleged, even if the judge or jury is convinced of the accuser's guilt," he said.

"The other rule requires a judge to give a warning of the dangers of convicting a person on the uncorroborated evidence of a victim.

"A failure to give such a warning is likely to lead to a conviction being quashed on appeal, even though the evidence was, in fact, corroborated," he added.

There are seven types of sexual offences under the Crimes Ordinance for which prosecution evidence must be corroborated. The second rule, requiring the giving of warning by a judge, applies to all other types of sexual offences.

The spokesman pointed out that these rules had increasingly been criticised as unsatisfactory in many common law jurisdictions.

"Their application to sexual offences works particularly to the disadvantage of victims of sexual offence, whose evidence is characterised as inherently unreliable.

"In addition, the rules are extremely difficult to explain and apply, and are rigid in their application," said the spokesman.

The published Bill abolishes the rule requiring a corroboration warning to be given in respect of sexual offences, both in the case of a judge sitting with a jury, and in the case of a judge or a magistrate sitting alone.

The requirement of corroboration in respect of seven sexual offences under the Crimes Ordinance, including the procuring of a person by threats or intimidation to do an unlawful sexual act, and the procuring of a person to become a prostitute, will also be repealed.

End

#### Consumer Price Indices for January

\* \* \* \* \*

Consumer price inflation in terms of the Consumer Price Index (A) showed a remarkable further easing, to 5.9% in January 1996, from 8.2% in November and 6.6% in December 1995. This is the lowest inflation rate recorded since September 1987.

The latest Consumer Price Indices was released by the Census and Statistics Department today (Friday).

Similar moderation was also recorded in the Consumer Price Index (B). In January 1996, CPI(B) rose by 6.8%, compared with 7.3% in December 1995. The corresponding increase for Hang Seng CPI was 7.9%, which was the same as that in December 1995.

Composite CPI, which is compiled based on the combined expenditure pattern of all households, thus had a less rapid year-on-year increase of 6.8% in January 1996, against 7.2% in December 1995.

A government spokesman commented that the marked moderation in consumer price inflation in January, particularly as measured by CPI(A), was partly a reflection of continued moderation in inflationary pressures from both domestic and imported sources, a trend which emerged in the latter part of last year.

A less stringent local resource situation, together with slower increase in import prices brought about by a stronger US dollar, had contributed.

However, the CPI figures for the month were also likely to have been distorted by the difference in timing of the Chinese New Year, which occurred in mid-February this year, but in end-January/early February last year.

Because the prices of those consumer items popular for the occasion were generally higher just before the festival, the increase in CPI on a year-on-year comparison tended to be dampened for the month of January, but lifted for the month of February this year.

Thus for analysis of trend, it was better to combine the figures for the first two months, rather than viewing them in isolation.

Contributing the most to the slower rate of increase in CPI(A) in January 1996 as compared to December 1995 was the prices of foodstuffs, which were influenced directly by the timing of the Chinese New Year.

The prices of miscellaneous consumer services, transport and durable goods also showed less rapid increases. The prices of miscellaneous goods recorded a decline over a year earlier, mainly due to the cheaper prices of some newspapers.

On the other hand, more rapid increases in prices were recorded for clothing and footwear, fuel and light, and alcoholic drinks and tobacco.

Analysed by component, those components with relatively faster price increases than the overall average for January 1996 over January 1995 were housing (10.6% in CPI(A), 11% in CPI(B), 14% in Hang Seng CPI and 11.8% in Composite CPI); and clothing and footwear (10%, 11.4%, 8.7% and 10.1%).

Meanwhile, those components with relatively slower price increases than the overall average for January 1996 over January 1995 were food (excluding meals bought away from home) (1.5% in CPI(A), 2.5% in CPI(B), 3% in Hang Seng CPI and 2.1% in Composite CPI); and durable goods (3.5%, 3.3%, 4.4% and 3.7%).

The miscellaneous goods category recorded a decline for January 1996 over January 1995 (-6.8% in CPI(A), -2.8% in CPI(B), -0.2% in Hang Seng CPI and -3.6% in Composite CPI). This was mainly due to the impact of the decreases in the prices of some Chinese newspapers, books and periodicals.

Comparing January 1996 with December 1995, CPI(A) CPI(B) increased by 0.1% and 0.3% respectively. The corresponding increases for Hang Seng CPI and Composite CPI were 0.1% and 0.2% respectively.

For the three months ended January 1996, CPI(A) and CPI(B) were, on average, higher by 6.9% and 7.5% respectively over a year earlier. The corresponding increases for Hang Seng CPI and Composite CPI were 8.2% and 7.5% respectively.

For the 12 months ended January 1996, CPI(A) and CPI(B) were, on average, higher by 8.4% and 8.9% respectively than the preceding 12-month period. The corresponding increases for Hang Seng CPI and Composite CPI were 9.3% and 8.8% respectively.

Seasonally adjusted series are also available for the CPIs. The seasonally adjusted monthly rate of increase in CPI(A) decreased by an average of 0.1% during the three months ended January 1996, while CPI(B) increased by only 0.1%. The corresponding increases for Hang Seng CPI and Composite CPI were 0.3% and 0.1% respectively.

Further details are shown in Tables 1-2 and Charts 1-4.

More details are given in the Consumer Price Index Report for January 1996, which is on sale at \$37 per copy from the Government Publications Centre, Queensway Government Offices, Low Block, ground floor, 66 Queensway, Hong Kong.

It is also available from the Publications Unit of the Census and Statistics Department, 19th floor, Wanchai Tower, 12 Harbour Road, Wan Chai, Hong Kong.

For local and overseas mailings, contact should be made with the Information Services Department, 28th floor, Siu On Centre, 188 Lockhart Road, Wan Chai, Hong Kong.

For enquiries about the indices, please telephone the Consumer Price Index Section of the Census and Statistics Department on 2805 6403. Details regarding Hang Seng CPI are contained in the Hang Seng CPI Report issued by the Economic Research Department of Hang Seng Bank Ltd.

-----

Table 1 Consumer Price Indices and Rates of Increase for January 1996  
(Oct. 89 - Sep. 90 = 100)

Component	CPI(A)		CPI(B)		Hang Seng CPI		Composite CPI	
	Index for Jan 96	% change over Jan 95	Index for Jan 96	% change over Jan 95	Index for Jan 96	% change over Jan 95	Index for Jan 96	% change over Jan 95
Food	153.0	+3.8	155.5	+4.4	157.3	+3.7	154.8	+4.0
Meals bought away from home	165.8	+5.9	165.2	+5.7	164.8	+4.0	165.3	+5.4
Food, excluding meals bought away from home	140.4	+1.5	142.1	+2.5	144.3	+3.0	141.7	+2.1
Housing	194.5	+10.6	200.2	+11.0	209.6	+14.0	201.4	+11.8
Fuel and light	137.4	+6.8	136.8	+6.6	135.1	+5.2	136.8	+6.5
Alcoholic drinks and tobacco	201.3	+6.4	190.6	+6.9	184.8	+7.4	195.2	+6.7
Clothing and footwear	154.9	+10.0	158.3	+11.4	165.1	+8.7	159.7	+10.1
Durable goods	118.0	+3.5	117.3	+3.3	124.0	+4.4	119.5	+3.7
Miscellaneous goods	129.4	-6.8	130.5	-2.8	131.7	-0.2	130.4	-3.6
Transport	161.7	+5.9	160.9	+5.7	159.3	+5.2	160.7	+5.7
Miscellaneous services	186.8	+8.7	178.3	+7.5	162.3	+5.4	176.1	+7.3
All items	163.2	+5.9	166.0	+6.8	170.7	+7.9	166.2	+6.8

Monthly consumer price indices are compiled on the basis of (a) expenditure patterns of relevant households and (b) prices collected currently in the month. The expenditure patterns underlying the 1989/90-based consumer price indices are based on those patterns derived from the 1989/90 Household Expenditure Survey. The CPI(A) is based on the expenditure pattern of about 50% of households in Hong Kong, which had an average monthly expenditure of \$2,500-\$9,999 in 1989/90 (broadly equivalent to \$3,900-\$16,000 at 1995 prices). The CPI(B) is based on the expenditure pattern of the next 30% of households, which had an average monthly expenditure of \$10,000-\$17,499 in 1989/90 (broadly equivalent to \$16,000-\$28,500 at 1995 prices). The Hang Seng CPI is based on the expenditure pattern of the next 10% of households, which had an average monthly expenditure of \$17,500-\$37,499 in 1989/90 (broadly equivalent to \$28,500-\$61,000 at 1995 prices).

Whereas the CPI(A), CPI(B) and Hang Seng CPI are based on the expenditure patterns of groups of households with different magnitudes of household expenditure, the Composite CPI is compiled based on the expenditure pattern of all these households taken together. Thus, while the CPI(A), CPI(B) and Hang Seng CPI show the impact of consumer price changes on different groups of households, the Composite CPI shows the impact of consumer price changes on the household sector generally.

Table 2 Year-on-year Rate of Change (%) in Consumer Price Indices for January 1993 - January 1996

<u>Year/month</u>	<u>CPI(A)</u>	<u>CPI(B)</u>	<u>Hang Seng CPI</u>	<u>Composite CPI</u>
1993 January	10.1	10.3	10.1	10.2
February	8.6	9.1	9.1	8.9
March	7.8	8.5	9.2	8.4
April	7.7	8.5	9.5	8.5
May	8.5	8.8	9.8	8.9
June	8.6	8.7	9.5	8.8
July	8.2	8.5	9.2	8.6
August	8.5	8.5	9.2	8.7
September	7.9	8.1	9.2	8.3
October	9.0	8.7	9.4	9.0
November	8.4	8.4	9.5	8.7
December	8.6	8.5	10.2	9.0
1994 January	6.2	6.9	9.0	7.2
February	7.8	8.1	9.8	8.4
March	8.0	8.2	9.2	8.4
April	7.7	8.2	9.9	8.4
May	7.8	8.4	10.0	8.6
June	7.5	8.1	10.1	8.4
July	8.5	8.6	9.9	8.9
August	9.8	9.5	10.4	9.8
September	8.6	9.0	10.2	9.2
October	7.9	9.0	10.5	9.0
November	8.6	9.5	10.6	9.5
December	8.9	9.5	10.3	9.5
1995 January	10.1	10.4	10.3	10.3
February	8.9	9.6	9.7	9.4
March	9.5	10.0	9.9	9.8
April	9.6	9.9	9.8	9.8
May	9.1	9.5	9.5	9.3
June	8.9	9.6	9.7	9.4
July	8.5	9.2	10.1	9.2
August	8.3	9.0	9.8	9.0
September	8.9	9.1	9.8	9.2
October	8.4	8.8	9.4	8.8
November	8.2	8.3	8.9	8.4
December	6.6	7.3	7.9	7.2
1996 January	5.9	6.8	7.9	6.8

Chart 1 Year-on-year Rates of Increase  
in CPI(A)

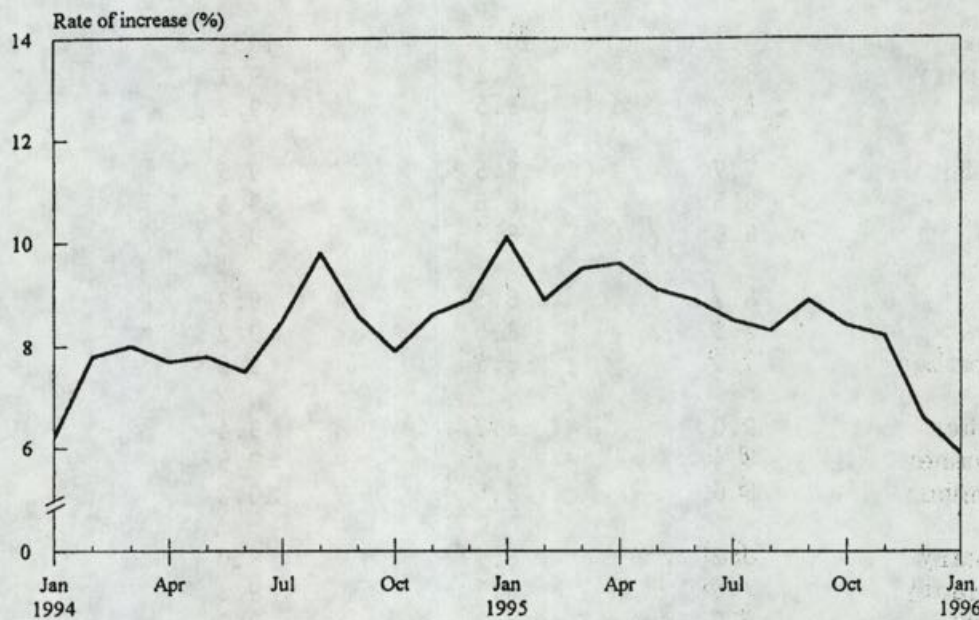


Chart 2 Year-on-year Rates of Increase  
in CPI(B)

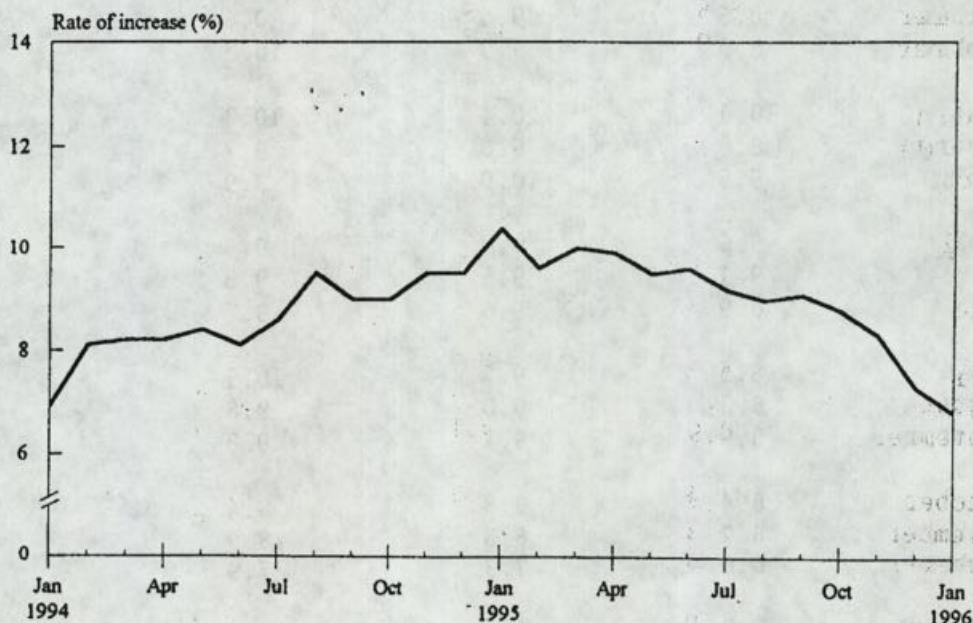


Chart 3 Year-on-year Rates of Increase  
in Hang Seng CPI

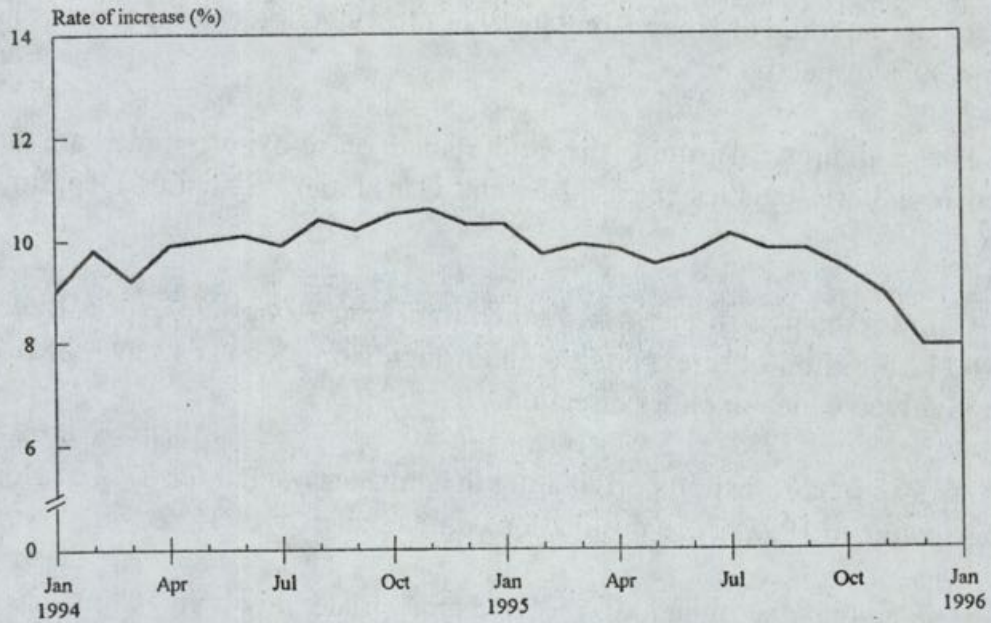
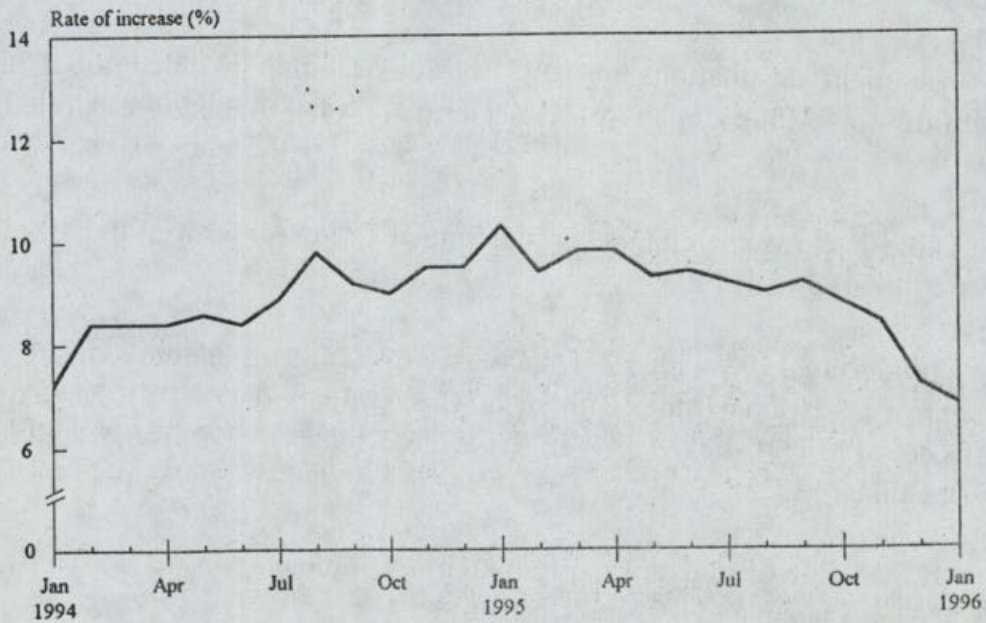


Chart 4 Year-on-year Rates of Increase  
in Composite CPI



### Analysis of Hong Kong's re-export trade statistics

\* \* \* \* \*

Re-exports accounted for 83% of the value of total exports and 39% of the total value of external trade of Hong Kong in 1995. In 1994, the corresponding shares were 81% and 39% respectively.

These figures, affirming the importance of re-export trade, are among the detailed re-export statistics released by the Census and Statistics Department today (Friday).

China remained the largest partner for Hong Kong's re-export trade. Of the total \$1,112.5 billion of re-exports going through Hong Kong in 1995, 88% or \$984.3 billion involved China in either direction.

As a source, re-exports originating in China accounted for 57% of Hong Kong's re-export value in 1995. As a destination, China's share was 35%.

It is noted that much of the re-export trade involving China is related to outward processing, as raw materials and semi-manufactured goods are exported to China for processing, with the final products subsequently returned to Hong Kong, and re-exported to overseas markets.

Other main origins of Hong Kong's re-exports in 1995 included Japan (accounting for 12%), Taiwan (7.5%), the United States (5%) and South Korea (3.4%).

The main destinations in 1995, besides China, included the United States (accounting for 21%), Japan (6.3%), Germany (4.1%) and the United Kingdom (2.9%).

Table 1 shows the changes in the value of re-exports from the 10 main origins in 1995 compared with 1994.

Comparing 1995 with 1994, increases of various magnitudes were recorded in the value of re-exports from all main origins: Singapore (+44%), Malaysia (+41%), South Korea (+37%), Italy (+34%), the United States (+27%), the United Kingdom (+19%), China (+17%), Taiwan (+16%), Japan (+7%) and Germany (+2%).

Of the value of re-exports originating in China in 1995, 34% went to the United States, 9.3% to Japan and 6.7% to Germany.

For goods of Japan origin, 71% of the value of re-exports through Hong Kong in 1995 went to China, 4.9% to the United States and 3.6% to South Korea.

For re-exports originating in Taiwan, an overwhelming proportion (93% of the value in 1995) went to China.

As regards re-exports originating in the United States, 69% of the value in 1995 were shipped to China, 3.9% to Taiwan and 2.9% to South Korea.

Table 2 shows the changes in the value of re-exports to the 10 main destinations.

Comparing 1995 with 1994, increases of various magnitudes were recorded in the value of re-exports to all main destinations: Japan (+28%), Singapore (+28%), France (+28%), Taiwan (+24%), the Netherlands (+23%), China (+19%), the United Kingdom (+18%), South Korea (+17%), Germany (+10%) and the United States (+10%).

Analysed by commodity, significant increases in the value of re-exports to China were recorded for plastics in primary forms (by \$9.8 billion or 50%); textiles (by \$9 billion or 16%) and electrical machinery, apparatus and appliances, and electrical parts thereof (by \$7.9 billion or 33%).

However, decreases in the value of re-exports to China were recorded for road vehicles (by \$14.4 billion or 60%); and machinery specialised for particular industries (by \$329 million or 2.7%).

As regards re-exports to the United States, significant increases in value were recorded for electrical machinery, apparatus and appliances, and electrical parts thereof (by \$5.6 billion or 33%); miscellaneous manufactured articles consisting mainly of baby carriages, toys, games and sporting goods (by \$5.1 billion or 9.1%); and office machines and automatic data processing machines (by \$3.3 billion or 37%).

However, decreases in the value of re-exports to the United States were recorded for clothing (by \$3.4 billion or 14%); and chemical materials and products (by \$124 million or 26%).

Detailed statistics of Hong Kong's re-export trade are published in the December 1995 issue of the Hong Kong External Trade report which will on sale at \$122 per copy around February 27.

The report can be purchased at either the Government Publications Sales Centre, ground floor, Low Block, Queensway Government Offices, 66 Queensway, Hong Kong; or the Publications Unit of the Census and Statistics Department on 19th Floor, Wanchai Tower, 12 Harbour Road, Wan Chai.

Enquiries regarding subscription to this report may be directed to the Publications (Sales) Office, 28th Floor, Siu On Centre, 188 Lockhart Road, Wan Chai, Hong Kong, Tel 2598 8194; and enquiries on trade statistics to the Census and Statistics Department, Tel 2582 4915.

-----

TABLE 1 : RE-EXPORTS FROM THE TEN MAIN ORIGINS

ORIGIN	JAN-DEC	JAN-DEC	YEAR-ON-YEAR CHANGE	
	1995 (HKD Mn.)	1994 (HKD Mn.)	(HKD Mn.)	(% CHANGE)
CHINA	636,392	545,831	+ 90,561	+ 16.6
JAPAN	130,511	121,936	+ 8,575	+ 7.0
TAIWAN	83,307	72,060	+ 11,247	+ 15.6
UNITED STATES	55,636	43,678	+ 11,958	+ 27.4
SOUTH KOREA	37,615	27,444	+ 10,171	+ 37.1
SINGAPORE	21,678	15,069	+ 6,609	+ 43.9
GERMANY	14,886	14,588	+ 299	+ 2.0
MALAYSIA	13,334	9,461	+ 3,873	+ 40.9
ITALY	10,899	8,153	+ 2,747	+ 33.7
UNITED KINGDOM	10,661	8,983	+ 1,678	+ 18.7

TABLE 2 : RE-EXPORTS TO THE TEN MAIN DESTINATIONS

DESTINATION	JAN-DEC	JAN-DEC	YEAR-ON-YEAR CHANGE	
	1995 (HKD Mn.)	1994 (HKD Mn.)	(HKD Mn.)	(% CHANGE)
CHINA	384,043	322,835	+ 61,208	+ 19.0
UNITED STATES	230,997	210,077	+ 20,920	+ 10.0
JAPAN	70,081	54,745	+ 15,336	+ 28.0
GERMANY	45,770	41,617	+ 4,153	+ 10.0
UNITED KINGDOM	32,257	27,318	+ 4,939	+ 18.1
TAIWAN	27,758	22,416	+ 5,342	+ 23.8
SINGAPORE	26,011	20,346	+ 5,665	+ 27.8
SOUTH KOREA	19,292	16,483	+ 2,809	+ 17.0
FRANCE	17,452	13,671	+ 3,781	+ 27.7
NETHERLANDS	16,702	13,542	+ 3,161	+ 23.3

### Free Legal Advice Scheme extended

\* \* \* \* \*

To meet growing public demand for free legal advice, the Central and Western District Office has been designated the sixth Home Affairs Department (HAD) Free Legal Advice Interview Centre.

It will be open every Monday night for volunteer lawyers on duty to provide such service to members of the public.

The Free Legal Advice Scheme is jointly organised by HAD and the Duty Lawyer Service. The other five centres where free advice are given one night a week are at the district offices in Wan Chai, Yau Tsim Mong, Kwun Tong, Sha Tin and Tsuen Wan.

Members of the public who need free legal advice can approach any of the 19 Public Enquiry Service Centres. District Office staff will arrange appointments after taking note of the requisite particulars of the case.

Last year, a total of 4,042 appointments had been made under the scheme.

For more information, members of the public can contact the Public Enquiry Service Centres or call HAD's Central Telephone Enquiry Centre at 2835 2500.

End

### Environmental Study for Tsing Yi North Coastal Road

\* \* \* \* \*

The Highways Department today (Friday) signed a \$1.08 million consultancy agreement with Mouchel Asia Limited for the environmental and drainage impact assessments for Tsing Yi North Coastal Road.

The proposed dual-two road will link up Tsing Tsuen Bridge and Lantau Fixed Crossing.

In view of its proximity to Cheung On Estate and across several natural stream courses, a consultancy is therefore commissioned to study and provide information on the extent of environmental and drainage impact resulting from the proposed road works and to recommend mitigation measures.

The assessment will start this month for completion in August.

End

Four lots of land up for auction

\* \* \* \* \*

Four lots of government land, two on Hong Kong Island, one each in Hung Hom and Tai Po, will be offered for sale at a public auction on March 18. It was notified in the Gazette today (Friday).

The auction will start at 2.30 pm in the Concert Hall of the Hong Kong Cultural Centre, Tsim Sha Tsui.

The first lot, located in Hong Man Street, Chai Wan, has an area of 1,590.7 square metres for non-industrial use, excluding godown, hotel, and service apartment.

The developer has to complete a gross floor area of not less than 8,523 square metres on or before March 31, 1999.

Located at the junction of Wyndham Street and Arbuthnot Road, the second lot has an area of 1,585 square metres. It is intended for non-industrial use, excluding private residential, hotel, service apartment and godown.

The developer will be required to complete a gross floor area of not less than 14,265 square metres on or before March 31, 2000.

With an area of 15,073 square metres, the third lot is located at Hung Hom Bay Reclamation, southwest of Whampoa Street and Po Loi Street. The lot is earmarked for non-industrial use, excluding godown and petrol filling station.

The developer will need to complete a gross floor area of not less than 82,417 square metres on or before April 1, 2001.

The fourth lot located in Area 2, Tai Po, has an area of 465.8 square metres for non-industrial use, excluding godown.

The developer has to complete a gross floor area of not less than 1,700 square metres on or before March 31, 1999.

Full particulars and conditions of the land sale may be obtained from the Lands Department, 14th floor, Murray Building, Garden Road; and the District Lands Offices, Kowloon, Yau Ma Tei Car Park Building, 10th floor, 250 Shanghai Street, Kowloon.

Conditions of sale will also be available at the district lands offices of Sha Tin, Tuen Mun, Yuen Long, Tsuen Wan, Sai Kung, Kwai Tsing, Tai Po, North and the Islands.

End

Two nominations received for DB by-election

\* \* \* \* \*

A total of two nominations were received for the Tuen Mun District Board by-election in respect of Siu Hei constituency to be held on March 24, after the two-week nomination period closes today (Friday).

Details of the nominations are as follows:

<u>Name/Age</u>	<u>Occupation</u>	<u>Tel No</u>
Mr Yim Tin-sang (43)	Regional Councillor	2459 6108 (day) 2452 3605 (night)
Ms Wong Yin-ping (34)	Administrator	2476 5555

End

Contractors summonsed for alleged breach of employment law

\* \* \* \* \*

The Labour Department has recently issued a total of 21 summonses to five building contractors for suspected non-grant of statutory holidays to a number of imported workers from China in August and September last year.

Five of the summonses under Section 39 of the Employment Ordinance were served on Shui On Civil Contractors Limited on February 9 for not granting to five imported workers a statutory holiday on September 9 which was the Chinese Mid-Autumn Festival.

The case will be heard in the Western Magistracy on March 8. The defendant is the contractor of the Airport Railway's Siu Ho Wan Depot Phase I on Lantau Island under the new airport and related project.

In another case, 16 summonses were served on four sub-contractors of the Airport Railway's Tsing Yi Station project on February 16 for not granting 16 imported workers a statutory holiday on August 28.

These sub-contractors included Benco Engineering Company (1 summons); Cheukman Engineering Company Limited (five summonses); Sun Wing Kee Foundation Engineering Limited (five summonses) and Croft Engineering Limited (five summonses).

The case has been scheduled for hearing in Tsuen Wan Magistracy on May 7.

End

#### Direct supervision gives strength to HK penal system

\* \* \* \* \*

The strength of Hong Kong's penal system lies in the method of management by direct supervision, the Commissioner of Correctional Services, Mr Raymond Lai Ming-kee said today (Friday).

Speaking at the Rotary Club Kowloon North luncheon meeting, Mr Lai said the method allowed the Correctional Services Department to maintain control even under the most difficult circumstances.

"Hong Kong runs a multi-ethnic, multi-lingual prison system," he said, adding that this, coupled with overcrowding, could lead to a volatile situation.

The multi-ethnic mix means there will be communication problem, different eating habits, religious belief and all these would lead to tension and an "us and them" mentality among prisoners.

"We have seen incidents of mass fights, food refusals, work stoppages as a result," said Mr Lai.

"The trivia are the main cause of discontent among prisoners is because the big issues which cause problems in some prison systems - sex, drugs, alcohol - are absent in Hong Kong."

Hong Kong prisons did face a problem with gambling, he admitted: "But the resolution with which we tackle this issue means that it rarely gets out of hand, and never causes the sort of problems which occur elsewhere.

"The downside of direct supervision, for the prisoners, is that they do not get the freedom of choice they would need to be able to wrest control from the management," Mr Lai concluded.

End

Tenders for footbridge improvement works invited

\* \* \* \* \*

The Highways Department is inviting tenders for the improvements to the footbridge across Kwun Tong Road at Tsun Yip Lane.

The works include the demolition of the existing footbridge across Kwun Tong Road at Tsun Yip Lane; construction of a covered footbridge with ramps and two-way escalators at both ends to replace the existing footbridge; construction of sewer; and associated footway re-construction and drainage works.

Construction is scheduled to commence in May for completion in May 1998.

A notice on the tender invitation is gazetted today (Friday).

Tender forms and particulars can be obtained from Regional Highway Engineer/Kowloon, Highways Department, 13th floor, Room 1321, Nan Fung Commercial Centre, 19 Lam Lok Street, Kowloon Bay, Kowloon. The contact telephone number is 2707 7436.

Tenders must be clearly marked and addressed to the Chairman, Central Tender Board, and placed in the Government Secretariat Tender Box at the lift lobby on the lower ground floor of the Central Government Offices (East Wing), Lower Albert Road (at its junction with Garden Road), Hong Kong, before noon on March 22.

Late tenders will not be accepted.

The works have been designed and construction will be supervised by Kowloon Region of Highways Department.

End

### SWD distributes blankets to street sleepers

\* \* \* \* \*

Staff of the Social Welfare Department (SWD) had distributed a total of 863 blankets to street sleepers in a territory-wide operation last (Thursday) night.

Among the blankets distributed, 291 were given on Hong Kong Island, 12 in East Kowloon, 446 in West Kowloon, 43 in New Territories East and 71 in New Territories West.

"It is a normal practice for the department to distribute blankets to street sleepers when the temperature drops to or near 10 degrees Celsius," a department spokesman said.

It was the fifth such exercise during the current winter season.

Yesterday, SWD had delivered 500 blankets each to its 13 district offices for distribution to single elderly people through the following channels:

- \* staff in Family Services Centres and Social Security Field Units would identify vulnerable single elderly clients and check whether they need extra blankets or any other services; and
- \* SWD staff would contact Non-governmental organisations running multi-service centres for the elderly and home help teams to identify similar elderly clients who may need help.

End

### Hong Kong Monthly Digest of Statistics now on sale

\* \* \* \* \*

A feature article entitled "Analysis of Hong Kong's retained imports, 1989-1994" is published in the February 1996 issue of the Hong Kong Monthly Digest of Statistics.

Hong Kong's imports cover both goods for domestic use - retained imports - and goods for re-exportation. Statistics on retained imports are of significant value in economic analysis as they measure local demand for imports.

Hong Kong being an important trading centre, a large proportion of imports are re-exported to other countries/territories with the rest being retained for use locally.

The feature article introduces the basic concepts of retained imports and the compilation method of the statistics. The movements of retained imports during the period 1989 to 1994 are also analysed.

The February issue of the Monthly Digest is now on sale at \$50 a copy. It contains most up-to-date information on Hong Kong's situation regarding economic growth, the labour market, inflation and many other social and economic issues.

Purchase can be made at the Government publication Centre, ground floor, Low Block, Queensway Government Offices, 66 Queensway, Hong Kong.

It is also available for sale at the Publications Unit of the Census and Statistics Department, 19th Floor, Wanchai Tower, 12 Harbour Road, Wan Chai, Hong Kong.

Regular subscription can be arranged with the Publications (Sales) Office of the Information Services Department, Tel 2598 8194.

End/

#### Application for part-time teachers invited

\* \* \* \* \*

The Education Department is inviting qualified teachers to fill the evening part-time teaching vacancies in various courses to be given in the 1996-97 school year.

The department's Adult Education Section has organised a number of courses, including English, government evening secondary school and adult education, in centres throughout the territory.

A spokesman for the department said: "Applicants should be qualified teachers with a genuine interest in teaching adults in the evening."

"Experience in teaching English language, Chinese language or arts subjects at post-secondary, secondary six or senior secondary levels; science, social or commercial subjects at senior secondary levels and possession of a Diploma/Certificate in Education or Advanced Certificate in Teacher Training would be an advantage."

The pay scale for part-time teaching is as follows:

- \* \$365 per hour for post-secondary or secondary six level subjects;
- \* \$305 per hour for senior secondary level subjects;
- \* \$240 per hour for junior secondary level subjects; and
- \* \$220 per hour for primary level subjects.

Application forms can be obtained from the Adult Education Section of the Education Department at Wu Chung House, 11th floor, 213 Queen's Road East, Wan Chai.

Completed forms should reach the Adult Education Section on or before March 23. If applicants are not called for interview by May 1, they should assume that their applications have been unsuccessful.

For further information, please contact the Adult Education Section on 2892 6669.

End

#### Hong Kong Monetary Authority money market operations

\*\*\*\*\*

	\$ million	Time (hours)	Cumulative change (\$million)
	-----	-----	-----
Opening balance in the account	2,573	0930	+228
Closing balance in the account	2,771	1000	+228
Change attributable to :		1100	+228
Money market activity	+228	1200	+228
LAF today	-30	1500	+228
		1600	+228

LAF rate 4.00% bid/6.00% offer TWI 123.3 \*+0.1\* 23.2.96

Hong Kong Monetary Authority

EF bills		EF notes				
Terms	Yield	Term	Issue	Coupon	Price	Yield
1 week	4.61	2 years	2802	5.16	100.00	5.23
1 month	4.75	3 years	3901	5.57	100.57	5.43
3 months	4.91	5 years	5012	6.38	101.91	6.00
6 months	4.97	7 years	7211	6.82	103.11	6.34
12 months	5.00	5 years	M502	7.30	104.43	6.29

Total turnover of EF bills and notes - \$20,641 million

Closed February 23, 1996

End