

# DIRECTOR OF MEDICAL AND HEALTH SERVICES

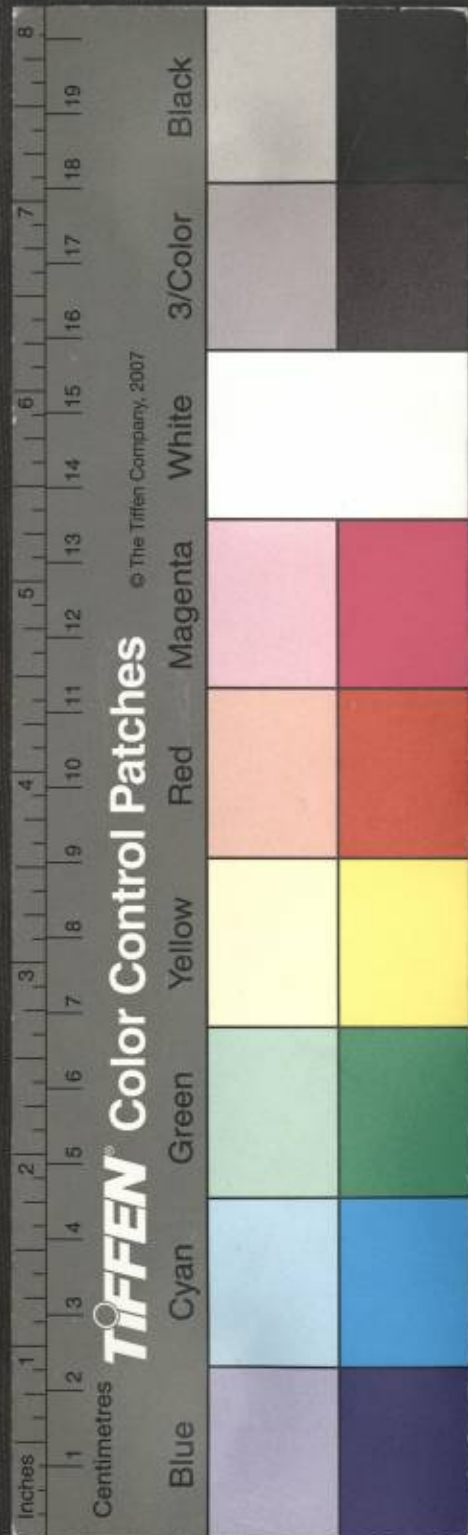


## 1982-1983 DEPARTMENTAL REPORT

歷史檔案館 PRO



000000000269284



HONG KONG  
ANNUAL DEPARTMENTAL REPORT  
BY THE  
DIRECTOR OF  
MEDICAL AND HEALTH SERVICES  
K.L. THONG, C.B.E., J.P.,  
M.B., B.S.(H.K.), F.F.C.M.(U.K.),  
D.P.H. (Malaya)  
FOR THE  
FINANCIAL YEAR 1982-1983\*

\* 1st April 1982 - 31st March 1983


PLEASE RETURN TO  
PUBLIC RECORDS OFFICE  
OF HONG KONG  
REFERENCE LIBRARY



XI 306

CONTENTS

	<u>Page</u>
I. Introduction	1
II. Health of the Community	1
III. Communicable Diseases	2-3
IV. Health Services	3-8
V. Hospital and Clinic Service	8-10
VI. Special Services	11-12
VII. Medical Development	12-13
VIII. Training	13-14
IX. Acknowledgement	14
X. Maps	
XI. Figures	
XII. Statistical Tables	

Public Records Office of Hong Kong Reference Library	
Ref. No.	
Acc. No.	8509
Date	16. 1. 84.

PLEASE RETURN TO  
PUBLIC RECORDS OFFICE  
OF HONG KONG  
REFERENCE LIBRARY

PLEASE RETURN TO  
PUBLIC RECORDS OFFICE  
OF HONG KONG  
REFERENCE LIBRARY

## I Introduction

The Medical and Health Department provides a whole range of medical and health services for the community of Hong Kong. The constant influx of immigrants into Hong Kong, the rising expectations of its people, coupled with the constraints in manpower and resources, have imposed heavy strains on services provided by the department. Attendances at the casualty departments of major Government hospitals, at various general and specialist out-patient clinics, and admissions to hospital wards, are the highest so far recorded. However, the development of medical and health services has shown no signs of slowing down but has in fact made satisfactory progress in keeping pace with the needs of the growing population.

For the 1982/83 financial year, the Medical and Health Department's expenditure was \$1,580.9 million. Subventions totalling about \$793.0 million are also being made to many non-government medical institutions and organisations. The capital expenditure on hospitals and other buildings including furniture and equipment was \$320.3 million.

## II Health of the Community

The general level of health of the population in Hong Kong remains good. This is due largely to anti-epidemic and disease surveillance measures, developments in preventive and personal health services and general improvement in the socio-economic conditions of the population. This progress is reflected by further improvement in the already good health indices and the decline in the incidence of major communicable diseases.

The estimated mid-year population of Hong Kong in 1982 was 5.23 million, an increase of 1.5% compared with the previous year. It was further estimated that about 24.3% of the population were under 15 while 6.9% were 65 and over.

The crude death rate was 4.9 per thousand population. Figure 2 shows the age specific death rates in Hong Kong for the year 1982. The five leading causes of death in Hong Kong were malignant neoplasms, heart diseases, cerebral vascular diseases, pneumonia and various injuries/poisoning. Common forms of malignancy in Hong Kong were cancers of the lung, liver, nasopharynx, stomach and intestine.

The total number of registered live births in the year was 86,036, a crude birth rate of 16.4 per thousand population compared to 16.9 in 1981. In the same year the infant mortality rate was 9.9 per thousand live births against 9.7 in 1981. The major causes of infant deaths recorded were anoxia, hypoxia and birth asphyxia (32%), congenital abnormalities (28%), immaturity (7%) and pneumonia (6%). Maternity mortality rate was 0.01 per thousand total births as compared with 0.08 in 1981.

### III Communicable Diseases

In the year 8 cases of Cholera were reported comprising 5 imported cases and 3 indigenous cases with no recent history of travel abroad. There were no secondary cases due to the prompt application of effective control measures.

One case of canine rabies was notified in the latter part of the year and a number of human contacts were given appropriate prophylactic treatment in a nearby medical centre. No human cases were reported. Preventive measures against rabies were once again stepped up with a further widening of the established 'cordon-sanitaire' in the northern area of the New Territories.

No poliomyelitis case was reported in the year and the incidence of other childhood communicable diseases like whooping cough and diphtheria remains under control. One isolated case of diphtheria was reported. The boy aged nine developed the acute illness with fulminating clinical symptoms. In spite of intensive treatment the patient succumbed with myocarditis. It was noted that the patient had not completed the recommended anti-diphtheria immunization course in early childhood.

In 1982, 1,863 cases of measles were notified with 5 deaths. The measles vaccination campaign continued throughout the year to promote vaccination of children aged one year and above. A total of 70,919 doses of vaccine were administered. During the year a total of 83,823 doses of Type I polio vaccine and 158,430 doses of trivalent vaccine were also administered, covering some 95% of local children under the age of one.

Rubella continued to occur in a sporadic fashion, including an outbreak recorded in the latter part of the year. Cases were reported from some schools, homes and offices. The rubella vaccination programme was introduced in 1978 to primary 6 school girls aged 11-14 years. Presently, the programme covers over 95 percent of all girls in Primary VI classes. The vaccination programme is also available to specific groups of women of child-bearing age including nurses, teachers, social workers and mothers visiting Family Health Centres.

In 1982 a total of 80 cases of malaria were reported, including one indigenous and two congenital cases. The Remainder were fresh recurrent cases and imported cases, affecting mainly foreign and local travellers and refugees from nearby South-East Asian countries. All cases were thoroughly investigated and anti-malaria measures including entomological surveys were instituted where ever necessary. Four cases of Japanese B Encephalitis were confirmed in the course of the year.

Many gastroenteritis diseases are still endemic in the region and they occur from time to time in minor outbreaks. There were 215 outbreaks of acute food poisoning involving some 870 people. The common organisms responsible for these outbreaks include salmonella, E. Coli, staphylococcus and vibroprahaemolyticus. Active case finding and contact tracing were carried out by the regional health teams. Their efforts have helped in limiting the spread of the disease within the community.

Virus Hepatitis remains prevalent in the community with 1,814 cases notified and 42 deaths reported in the year. A total of 16 cases of meningococcal meningitis was notified including 1 fatal case. Extensive epidemiological investigations were carried out, including strenuous efforts to locate possible carriers. Appropriate chemotherapy was given to close contacts.

### IV Health Services

#### Tuberculosis and Chest Services

A total of 7,527 cases of tuberculosis were notified representing a rate of 144 per 100,000 population compared with 150 for 1981. The tuberculosis death rate is 8.7 per 100,000 compared with 9.5 in 1981, representing about 1.8% of the total registered deaths in 1982. Attendances at Government chest clinics numbered 703,343 compared with 749,759 in 1981, a decline of over 6%. The BCG vaccination rate remains very high, covering over 98.9% of newborn infants.

#### Family Health Services

The Family Health Services of the Medical & Health Department operates 42 MCH centres, providing a comprehensive health programme for women of child-bearing age and children up to five years of age. Family Planning is an important component of the Family Health Services. Antenatal and post-natal health consultation sessions are conducted for mothers. Immunisation programmes are carried out against tuberculosis, diphtheria, whooping cough, tetanus, poliomyelitis, measles and rubella. During 1982, about 92 per cent of all newborn babies attended Family Health Centres.

The comprehensive observation scheme was introduced in 1978 to detect and assess early developmental abnormalities, and, where necessary, to provide follow-up treatment. The service is now available at 42 Family Health Centres. Children attending these centres may, if their condition warrants it, be referred to Child Assessment Centres or various specialist units for further examination. The system enables rehabilitation processes to start as early as possible.

A Health Education Unit was set up in 1982 to extend health education to expectant mothers at major Government hospitals. Particular emphasis is placed on the promotion of breastfeeding. In addition, a telephone information service has been established to answer public enquiries on health matters.

The Government-subsidized Family Planning Association of Hong Kong runs 28 birth control clinics providing vasectomy as well as female sterilization services.

### Arran Street Multi-disciplinary Child Assessment Centre

The centre serves children from birth to 12 years old. It provides comprehensive physical, psychological and social assessment as well as therapy, parental counselling and the appropriate placement of children in one of the various institutions and centres run by both Government and voluntary agencies. The centre also works closely with the special child care centre of the Social Welfare Department and the Special Education Service Centres of the Education Department.

Towards the end of the year, a Toy Library was set up as a form of treatment programme. The aim is to enhance the development of children through toys and play. Emphasis is placed on parent-involvement, and includes guidance on the selection of toys. An open day was held in October 1982 to celebrate the 5th anniversary of the opening of the clinic.

In 1982, 1,005 cases were assessed and 4,287 case sessions were held. An expansion programme to set up seven more such child assessment centres on a regional basis is in progress.

### Social Hygiene and Special Skin Service

#### Venereal Disease Service

The incidence of venereal disease recorded in 1982 was 9,806 compared with 7,601 in 1981. About 4.22% of these cases occurred in the teenage (under 15) group. The common sexually transmitted diseases were gonorrhoea (46%), syphilis (8%) and non-gonococcal urethritis (13%). The incidence of other sexually transmitted diseases, e.g. chancroid, genital herpes and lympho-granuloma venereum remained low.

Ante-natal blood tests carried out routinely in all Governmental and non-governmental antenatal centres indicated an initial positive rate of 0.32% compared with 0.34% in the previous year. Of the 90 positive cases referred to the social hygiene clinics only 51 cases (57%) were found to be suffering from syphilis.

The health staff were involved in epidemiological activities such as contact tracing and follow-up of defaulters and those at risk of frequent exposure. Health education in social hygiene was also emphasised through frequent health talks and the issuing of pamphlets and posters to the public.

#### Leprosy Service

There has been a gradual fall in the incidence of leprosy during the past 2½ decades and this trend continued in 1982. The number of new cases treated in 1982 was 57 representing an incidence rate of 1.1 per 100,000 population. The ratio of male to female cases was 6 to 1 and about 54% of the cases were tuberculoid cases.

All leprosy cases needing in-patient treatment are admitted to Lai Chi Kok Hospital and in 1982 there were 14 new admissions.

### Dermatology Service

Total attendances at skin clinics numbered 57,011 including 18,571 new cases. The six most common skin diseases encountered were eczema, tinea, scabies, acne, verruca and neurodermatitis. As in previous years, there was a very low incidence of skin cancer.

### Narcotics and Drugs Administration

The department runs a methadone maintenance and detoxification scheme for drug addicts. There are at present 24 methadone clinics located throughout Hong Kong which operate on a daily basis, including Sundays and Public Holidays. A central laboratory for urine testing, operated by the Government Chemist and providing a fast and efficient analytical support to the methadone clinics was opened in August 1980. The average daily attendance ranges from 6,000 to 8,300.

### Occupational Health and Hygiene

The Occupational Health Division, formerly known as the Industrial Health Division of the Labour Department, provides an advisory service to Government and industry on matters concerning the health of workers and the hygiene of the workplace and a supervisory function in occupational health standards and practice. The aim of occupational health is to maintain and improve the physical and mental well-being of workers, protect them against any hazard arising from their employment and help them in adjusting to their tasks.

A prime responsibility of the division is to investigate notified occupational diseases and potential hazards reported by the factory inspectorate and to determine preventive action. Surveys and monitoring of processes involving possible physical, chemical or biological hazards are also undertaken. The medical examination of Government divers, compressed air workers and personnel exposed to ionizing radiation, is another activity aimed at ensuring that workers are physically fit for their task and that the work does not adversely affect their health.

Occupational health officers and health nurses of the division are also involved in the assessment and rehabilitation of injured workers and the staffing of medical boards required to implement the Employees' Compensation Ordinance and to deal with cases of silicosis under the Pneumoconiosis (Compensation) Ordinance.

The laboratory of the Occupational Health Division carries out analytical tests on biological samples from workers' urine and blood, and miscellaneous samples from the working environment, including silica concentrations. It also assists in conducting analyses required for the general air pollution monitoring programme in Hong Kong.

In 1982, 82 cases of decompression sickness, 9 cases of contact dermatitis and 1 case of lead poisoning were notified. Among the non-notifiable occupational diseases, 510 cases of silicosis were recorded.

836 field surveys and 4,219 laboratory analyses were conducted, representing respectively an increase of 6% and a decrease of 16% compared with 1981.

There were 81,132 occupational injuries reported. Of these, 70,879 non-fatal and 245 fatal cases were processed under the Employees' Compensation Ordinance. In connection with workmen's compensation claims, 333 and 22,833 cases were assessed by occupational health officers and medical assessment boards respectively.

#### Health Education

The Central Health Education Unit provides professional advice on health education and serves as a resource unit providing technical aids and information. It plans, co-ordinates and develops activities within the department and with other organisations. The unit works to a Health Education Co-ordinating Committee set up in the Department to advise on programmes of activities. The committee also provides general guidance and assistance to the unit on the development and implementation of health education programmes.

In 1982, a major campaign entitled "Healthy Heart Campaign - Protect your Heart, have an early start", was organised jointly by the Hong Kong Cardiology Society, the Hong Kong Heart Foundation and the Medical and Health Department. The aim of the campaign was to foster public understanding of heart disease, ways to prevent it, and the importance of early treatment. Other campaigns included eye care, tuberculosis, mental health, anti-smoking and care for the elderly. Public awareness was encouraged through exhibition, public lectures, seminars, workshops and radio programmes.

In January 1983, two Health Educational Audio Visual Centres were set up to provide an extensive range of services to the general public. Comprehensive resource material on various health topics were made available for public viewing and reference. In addition, the centre also operated a free lending service for interested groups, voluntary agencies and schools.

#### Dental Service

A school dental care service was first introduced in 1980. The service provides regular dental examination and simple dental treatment to primary school children. The response from parents to this aspect of preventive dentistry has been very encouraging. At the end of the third year of operation some 134,633 Primary I, II and III school children had participated in the scheme. The participation rate has increased to about 56%, compared with 41% and 29% in the second and first year respectively. Ultimately, the scheme will provide cover for all primary school children, and six more school dental clinics have been planned in addition to the existing two clinics now in operation.

Training in dentistry is provided by the Prince Philip Dental Hospital. Starting in 1980, the school has a maximum capacity for training 60 students a year. The Tang Shiu Kin Dental Therapists Training School offers a 3-year training programme for Student Dental Therapists.

The Government Dental Service provides dental care for all civil servants and their dependants as well as simple dental treatment for the inmates of penal institutions and specialist treatment for patients in Government hospitals. Emergency treatment is also available to the public in a number of district dental clinics.

#### Port Health

The Port Health Services provides enforcement control at Hong Kong International Airport and in the territory's waters, to prevent the introduction of quarantinable diseases and to carry out other measures required under the International Health Regulations.

The service provides facilities for vaccination and the issuing of international vaccination certificates. It also inspects and supervises the eradication of rats from ships on international voyages. The service provides medical assistance to ships in the harbour, transmits medical advice to ships at sea, operates a 24-hour health clearance service for all incoming vessels, and grants radio pratique to ships.

The health staff also maintain close surveillance on the food catering service to international airlines to ensure that food and water supplied by the flight kitchen service is clean and safe.

Epidemiological information is exchanged regularly with the World Health Organisation in Geneva, its Western Pacific Regional Office in Manila and with neighbouring countries.

#### Refugees

The number of refugees arriving in Hong Kong continued to decrease in 1982. Under the Immigration (Amendment) Ordinance 1982, all newly arrived refugees, after undergoing initial disinfection procedures, were transferred to various closed camps for quarantine and detention. A wide range of facilities and services including recreational, social, medical and family planning services are incorporated inside these camps. The health status of these refugees is closely monitored and has been found to be satisfactory.

Voluntary agencies continued to co-operate in the running of clinics for the treatment of minor ailments in open refugee centres, while serious cases were referred to Government hospitals and specialist clinics for examination and treatment.

#### School Medical Service

The School Medical Service Scheme is operated by an independent School Medical Service Board. The scheme offers an economic form of medical treatment service to all school children in Primary I to Form III. Participation is voluntary and, for a token fee of \$5 a year, a participant can receive free medical attention from a general medical practitioner of the school's choice. The Government contributes \$50 a year for each pupil enrolled and also bears the administrative cost of operating the Scheme. The general response to the Scheme is favourable and more than 250 general medical practitioners have enlisted in the Scheme.

Over 280,000 school children from 859 schools have participated in the scheme, representing a coverage of more than 35 percent of the total eligible school population.

The School Health Service, a Government responsibility, deals with the environmental health and sanitation of school premises and the control of communicable diseases. School health officers, health visitors and health inspectors make frequent inspections of schools, and advise on matters concerning the health of the children and organise special health educational activities and immunization campaigns.

## V Hospital and Clinic Service

### Hospitals

There are three types of hospitals in Hong Kong, these being, Government, Government-assisted and Private. Together they provide a total of 22,690 beds, representing 4.3 beds per thousand of the population. Pressure on the service was experienced on all fronts, reflected by the increase in attendance at out-patient clinics, casualty departments and by the number of hospital admissions.

To ensure better co-ordination within the health sector, the Department since 1977 has taken a regional approach to the planning and administration of medical and health services. Under this system, hospital and clinic facilities situated in a common geographical area are grouped together to form an integrated network of services. The aim is to ensure a more even utilization rate of medical facilities in both the Government and Government-subsidized hospitals and clinics. In 1983 further regionalisation was undertaken and the administration of the Regional Offices has been considerably strengthened with the provision of additional senior management staff.

In 1982, the total attendance at Government Casualty departments was 958,178, averaging 2,625 attendances per day. More than 640,800 patients were treated in the 13 Government and 19 Government-assisted hospitals.

### Clinics

General out-patient services form a vital part of the primary health care system. The Government now operates 58 general out-patient clinics and where necessary, cases are referred to polyclinics or specialist clinics for specialist attention. Evening, Sunday and Public Holiday sessions are also held at clinics in the more densely populated areas to help meet the expanding demand for out-patient services. Mobile dispensaries and floating clinics take medical services to the more remote areas of the New Territories, including the outlying islands. Other inaccessible areas are visited regularly by the 'flying doctor' service with assistance from the Royal Hong Kong Auxiliary Air Force.

### Ophthalmic Service

The Unit runs two main full-time out-patient specialist eye centres. In addition, mobile ophthalmic teams are sent around to operate other regional clinics. A total of 209,237 attendances were recorded on a sessional basis in 1982. The Unit also provides a specialist casualty service in the major regional hospitals on a call basis. There are a total of 78 ophthalmic beds in both regional and district hospitals. Mobile ophthalmic teams visit the hospitals on a sessional basis to perform surgery and to deal with cases referred from other clinical units. In 1982 a total of 2,026 operations were performed in the hospitals and a further 2,963 operations were performed in the out-patient clinics. Eight corneal transplantations were performed, including two transplantations from local donor tissues. The number of permanent blindness cases registered was 977. The pattern of causes of blindness has remained unchanged and is observed to be mainly degenerative in nature, occurring both in the senile and inborn group.

### Ear, Nose and Throat Services

The ENT Unit comprises two in-patient divisions with 33 beds based in Queen Mary Hospital and Queen Elizabeth Hospital. The total number of in-patients treated in 1982 was 2,619, with 1,811 major operations performed. The Unit also runs 11 full-time and part-time clinics in urban and rural areas. In 1982 attendances totalled 80,358. Minor surgical operations were also performed in out-patient clinics. Speech therapy services are available for those who have developed speech difficulties as a result of recent disease or surgery. There are 3 speech therapists in the Unit and over the year a total of 4,921 assessment and treatment cases were recorded.

### Mental Health Service

The Mental Health Service, in conjunction with other academic and voluntary bodies, provides a comprehensive psychiatric service for the mentally-ill. Sophisticated treatment facilities are available at the two major psychiatric hospitals - Castle Peak Hospital with 1,927 beds and Kwai Chung Hospital with 984 beds - and at psychiatric units in many regional and district hospitals. In line with the universal trend of providing small psychiatric units in general hospitals, an additional 2,100 beds have been planned for incorporation within future medical projects.

Supplementing the hospital facilities are psychiatric day centres, which provide a wide range of out-patient treatment, assessment, counselling and after care services on a regional basis. The centres also operate day hospital places and provide other social, occupational and recreational therapy services for the mentally-ill.

In 1982 there were 6,442 admissions to the mental hospitals, 631 to the various day hospitals and 188,879 attendances at the out-patient psychiatric centres. Medical staff were hard pressed to cope with the increasing number of medical boards and referrals from courts, probation officers and police. Additional commitments were also generated by the newly established Social Security Appeal Boards and the Compensation Boards for assessing emotional damages to victims of sexual offences and other violent crimes. Clinical psychologists of the Mental Health Service conducted a total of 7,480 interviews, for both therapeutic and assessment purposes.

Pursuing the practice of community psychiatry and adopting the multidisciplinary team approach in patient management, special emphasis is placed on the follow-up and after care of discharged mental patients during their integration back into the community. In the year the newly established Community Psychiatric Nursing Service was expanded on a regional basis to provide continuity in after-care treatment programmes to patients discharged from all mental institutions. Other complimentary rehabilitative supporting services including after care social service, placement service, half way houses, long-stay care homes, social clubs, etc. are organised by the various interested agencies and these services are closely monitored and co-ordinated by the Rehabilitation Development Co-ordinating Committee.

Severely mentally handicapped persons requiring intensive nursing care and medical treatment are cared for in Siu Lam Hospital with 200 beds and the Caritas Medical Centre with 300 beds. In order to meet the great demand in this area, a further 700 beds in this category have been planned for the next decade.

#### Physiotherapy Service

Physiotherapy Services are required for the treatment of patients in acute and convalescent hospitals, in maternity and obstetric wards in out-patient clinics and in the medical rehabilitation centres. They are actively involved in the rehabilitation of the physical and mentally handicapped in various institutes and centres.

In 1982, a total of 172,422 patients were treated and 1,313,413 attendances were recorded. With the heavy demand on the service and the anticipated rapid expansion of the service, the polytechnic was urged to increase its training capacity for physiotherapists from 40 to 60 per year. It is expected that the capacity will further be increased to 80 in 1983.

#### Occupational Therapy Service

Occupational therapy services are required in the treatment of people who are physically or mentally disabled. These people undergo planned activities designed to restore wholly or partly their bodily functions, enhancing their integration back into the community.

In 1982, 20,894 patients were treated with total attendances of 798,275 recorded.

#### Community Nursing Service

The Community Nursing Service extends continuing care to patients discharged from hospitals after suffering from acute illness and provides domiciliary medical care and support for the sick, the disabled and the elderly in their own homes.

The service was jointly operated by eight different agencies including the Medical and Health Department and is largely hospital based. Domiciliary services are delivered through a network of some 37 sub-centres covering the various districts including the New Territories. To monitor the effectiveness of the service, a central consultative committee has been set up to evaluate the progress of the scheme and to ensure the uniformity of the service. During the year 1982/83, 13,097 patients were attended by the 182 community nurses and more than 202,300 home visits were made.

## VI Special Services

### Pathology

The Pathology Service provides clinical and public health laboratory services to Government hospitals and clinics and a consultant service for the Government-assisted sector. It also administers mortuaries and blood banks. In 1982 a total of 8.93 million examinations were undertaken by the services representing an increase of 35% over the previous year. 80,284 units of blood were received by the blood banks in the year.

The Institute of Immunology produces vaccine and other biological products for use in local health services. A total of 654,775 ml. of vaccines were produced locally last year. These were mainly bacterial vaccine (Cholera and Typhoid), rabies vaccine and poliomyelitis vaccine. The Virus Unit provides a central laboratory service for the diagnosis and surveillance of viral infections. It also provides invaluable services for the screening, assessment and guidance of vaccination programmes against viral infections for the community.

The Forensic Pathology Service with its fully established forensic laboratory, works closely with the Royal Hong Kong Police Force on the medical aspects of criminology and other medico-legal work. The work of the service includes investigations in respect of all homicides and coroner's cases. The professional staff dealt with a total of 4,569 post-mortem examinations, 996 clinical examinations and blood groupings, and 3,049 laboratory examinations in 1982.

### Radiology and Oncology

The Institute of Radiology and Oncology comprises three main Divisions. The Radiodiagnostic Division provides diagnostic organ image services for Government institutes as well as a consultancy service to all Government-assisted hospitals and private medical institutions. 1,019,557 examinations were performed in 1982, an increase of 14% over last year's figure. To further upgrade the capability and quality of the diagnostic service, a new Computerized Axial Tomography whole body scanner was installed in the Queen Elizabeth Hospital towards the end of the year and three additional machines are planned for installation in three other regional hospitals.

The Radiation Therapy Division with its modern facilities and equipment provides Comprehensive Radiotherapy programmes of the highest standard to those needing the service. It also offers a chemotherapy service and operates a Central Cancer Registry for Hong Kong.

The Radiation Physics Division is responsible for the maintenance and operation of the radioisotope laboratories, the mould laboratories, radiological workshop and the photographic section.

The Radiation Health Unit was set up in March 1982 to enhance the administrative work of the Radiation Board and the requirements of the Radiation Ordinance and Regulations. Professional staff of the unit undertake regular inspectional visits to medical, commercial and industrial premises to monitor the working conditions of persons whose duties involve contact with radioactive materials. Radiation licences are issued to the proprietors in accordance with the Radiation Ordinance and Regulations. In the year, over 1,000 licences have been issued. A personal radiation monitoring service is offered to over 2,000 radiation workers.

A thermoluminescence dosimetry system will be commissioned in the later part of 1983 to replace the existing film dosimetry system.

#### Pharmaceutical Service

The Pharmaceutical Service is made up of two main divisions; the Hospital and Clinical Pharmacy Service responsible for the dispensing of medicines in all Government hospitals and clinics, and the Pharmacy Law Enforcement Services with 17 pharmacists and 12 clerks. The division supervises and enforces laws pertaining to the control of dangerous drugs, poisons and antibiotics as governed by the respective ordinances. Pharmacy law enforcement measures have been intensified to enable the identification and prosecution of those involved in the illegal production and transaction of poisons and antibiotics. The highlight of the year was the crack-down on Chinese proprietary medicines containing harmful poisons and drugs. A total of 17 million dollars worth of adulterated Chinese medicine in nine different brands was seized.

#### VII Medical Development

Some 15 medical projects including extensions or improvements to existing hospitals and clinics, were completed during the year as part of the vigorous medical and health development programme for the 1980s.

Yet despite this progress, a heavy strain was placed on existing services to meet the demands created by an increasing population, compounded by limited manpower and resources. The pressure of work was felt on all fronts as attendance figures at the casualty departments of major Government hospitals and clinics, as well as hospital admissions, reached unprecedented levels in 1982.

Within the expansion programme, the highlight of the year was the opening of the Prince of Wales Hospital in November by HRH the Duchess of Kent. Located in Sha Tin, the 1,400-bed regional hospital for the Eastern New Territories will serve as a teaching hospital for the medical school at the Chinese University of Hong Kong and will provide much needed treatment facilities for the growing new town. The hospital is to become operational in phases, starting in early 1984. Other major projects completed were the Ngau Tau Kok Clinic, providing necessary out-patient and specialist services in a densely-populated area, and the Yan Oi Polyclinic in Tuen Mun. The school children dental clinic in Argyle Street was operational in the early part of the year, further strengthening the school dental care service in providing regular dental treatment to primary school children in the area.

Overall, the Medical and Health Department's development plan for the decade includes the construction of five major Government hospitals, and aims for the completion of one hospital every two years. In addition to the Prince of Wales Hospital, a 1,600-bed hospital for Tuen Mun new town and three other hospitals, in East Kowloon, Chai Wan and Tai Po, each accommodating 1,400 beds, are under construction or being planned. As well as providing new hospitals, extension blocks are to be built at three existing Government hospitals, namely Queen Mary Hospital, Queen Elizabeth Hospital and Princess Margaret Hospital. Under the development programme, some 20 general clinics and polyclinics are due for completion during the decade.

Apart from these Government projects, subvented and private organizations do also have an important complementary role to play in the provision of medical care for the community. Projects in the pipeline include further extension to Yan Chai Hospital, Pok Oi Hospital and redevelopment of the Ruttonjee Sanatorium into a 430-bed general hospital. Furthermore, three new private hospitals are in the planning stage with a bed capacity ranging from 200 to 600 each.

#### VIII Training

In support of this ambitious medical development programme, additional training facilities are being developed for the training of doctors, nurses and paramedical staff.

Apart from the University of Hong Kong which produces 150 doctors a year, the medical school in the Chinese University of Hong Kong has commenced its first intake of 60 students since September 1981. Opportunities are available for doctors to sit for higher professional examinations in Hong Kong by dual arrangement with various examination bodies in the United Kingdom and Australia. During 1982, over 100 doctors were sent overseas for post-graduate training on Government or other scholarships.

An institute of medical and health care at the Hong Kong Polytechnic provides training for paramedical staff including radiographers, physiotherapists, occupational therapists and medical laboratory technicians. In-service training and post-qualification training courses are also available for paramedical staff within the civil service.

Training for general registered nurses is available in Government, Government-assisted and private hospitals. In 1983, 8 such training schools were in operation with an average annual capacity of 1,235. A further 3 nurse training schools providing over 400 additional training posts are planned for the coming decade. Over the same period, the training capacity for general enrolled nurses will increase from 600 to about 850.

There are three Government hospital schools of nursing for general registered nurses. A fourth will be established in the new Prince of Wales Hospital in 1983 and a fifth school in the Tuen Mun Hospital in 1987. Other approved nurse training schools are attached to Government-assisted and private hospitals.

Psychiatric nurses are mainly employed and trained in the Government sector. At present there is only one training school for psychiatric registered nurses at Kwai Chung Hospital with an annual capacity of 120. Two additional psychiatric nurse training schools are being planned with a further capacity of about 65 students by 1987. Psychiatric enrolled nurses are being trained in Castle Peak Hospital with an average annual intake capacity of 60 students, increasing to 80 by 1986.

The Government also runs post-qualified in-service training courses for registered and enrolled nurses in midwifery, health nursing and community nursing. Selected staff nurses are also sent overseas for special training in health education, occupational health and psychiatric nursing.

#### IX Acknowledgement

I wish to pay tribute to all the staff who have contributed to the efficient and effective functioning of the Department in the year under review. Although there have been pressures and difficulties, all performed their duties with devotion and dedication. I am most grateful for their unflinching support.

The Department acknowledges with thanks the assistance and cooperation given by other Government departments, voluntary agencies, the press, the radio and television networks.

Many public spirited persons have devoted their time and energy to serve on statutory boards, advisory committees, working parties and in voluntary agencies dealing with the many aspects of medical and health services in Hong Kong. Their contributions are greatly appreciated.

Finally, I would like to record my appreciation for the contributions of private individuals as well as local and overseas organisations who have assisted the Department in providing facilities for those in need of medical care. It is hoped that they will continue to contribute to the Medical Development Programme in the challenging years ahead. With such sound support, I am confident that the Department will continue to provide a good service.

(K.L. THONG)  
Director of Medical & Health Services

MAPS

## A

HONG KONG ISLANDGOVERNMENT HOSPITALS

- |  |    |
|--|----|
| a. Queen Mary Hospital (a regional hospital for Hong Kong Island)                                  | A1 |
| b. Tang Shiu Kin Hospital (a general hospital with casualty department and out-patient facilities) | A1 |
| c. Tsan Yuk Hospital (a maternity hospital)  | A1 |

GOVERNMENT-ASSISTED HOSPITALS

- |   |    |
|---|----|
| d. Alice Ho Miu Ling Nethersole Hospital (a general hospital with out-patient facilities) | A1 |
| e. Cheshire Home (a convalescent home)  | B2 |
| f. Duchess of Kent Children's Hospital at Sandy Bay                                       | A1 |
| g. Freni Memorial Convalescent Home   | A1 |
| h. Grantham Hospital (a tuberculosis and cardiothoracic surgery hospital)                 | A1 |
| i. Nam Long Hospital (a cancer hospital)  | A2 |
| j. Ruttonjee Sanatorium (a tuberculosis hospital)   | A1 |
| k. Tung Wah Hospital (a general hospital with out-patient facilities)                     | A1 |
| l. Tung Wah Eastern Hospital (a general hospital with out-patient facilities)             | B1 |
| m. Tung Wah Sandy Bay Convalescent Hospital   | A1 |

PRIVATE HOSPITALS

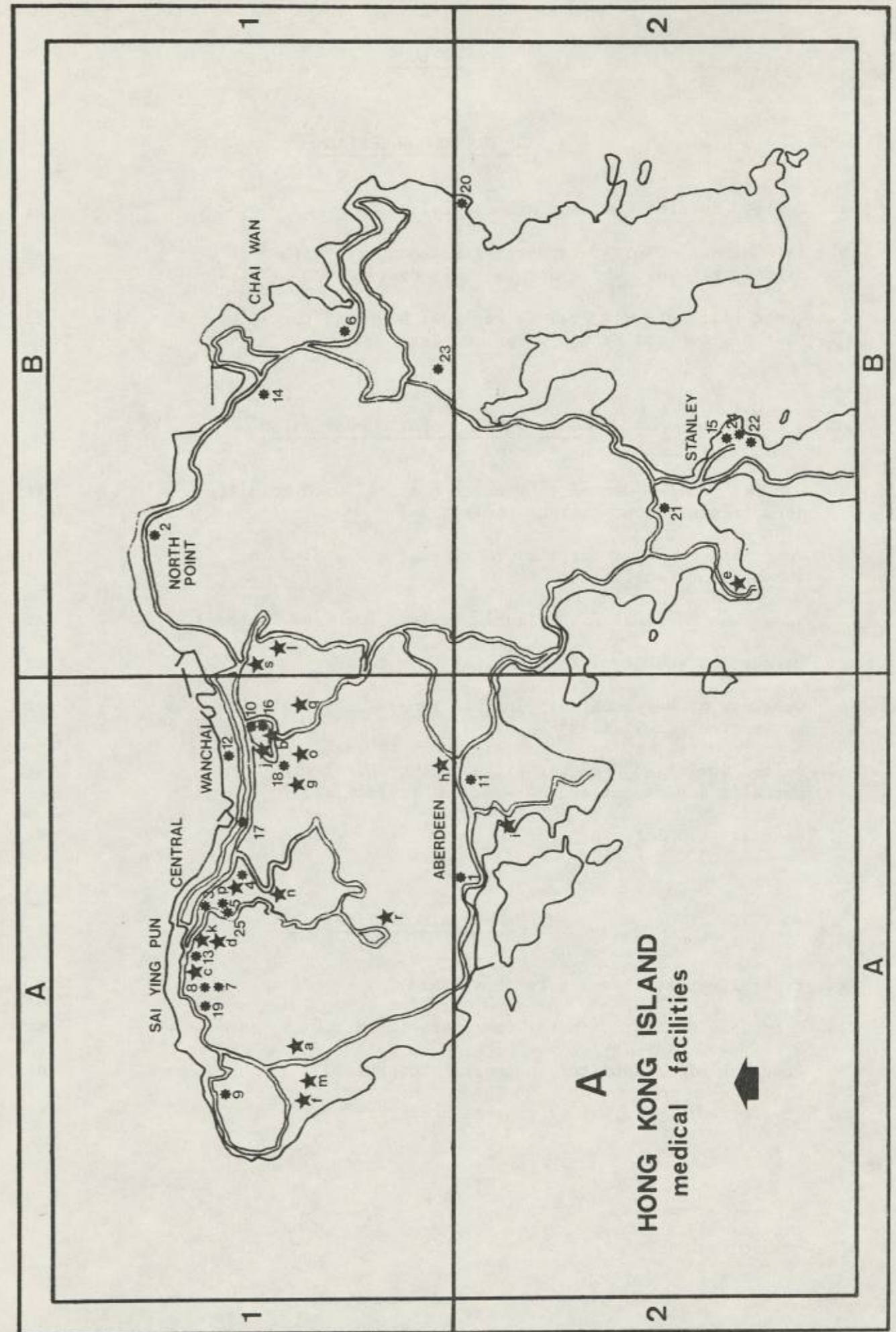
- |   |    |
|---|----|
| n. Canossa Hospital (a general hospital)                  | A1 |
| o. Hong Kong Adventist Hospital (a general hospital)      | A1 |
| p. Hong Kong Central Hospital (a general hospital)        | A1 |
| q. Hong Kong Sanatorium and Hospital (a general hospital) | A1 |
| r. Matilda and War Memorial Hospital (a general hospital) | A1 |
| s. St. Paul's Hospital (a general hospital)               | B1 |

OTHER GOVERNMENT INSTITUTIONS

- |  |    |
|--|----|
| 1. Aberdeen Jockey Club Clinic (general out-patient facilities, family health centre, eye clinic, chest clinic, social hygiene clinic, methadone clinic and dental clinic)   | A2 |
| 2. Anne Black Health Centre (general out-patient facilities, family health centre, eye clinic, dermatological clinic, dental clinic and X-ray survey centre)   | B1 |
| 3. Central District Health Centre (general out-patient facilities, family health centre, eye clinic and dermatological clinic)   | A1 |
| 4. Central Government Offices Dental Clinic  | A1 |
| 5. Central Police Station Medical Post (general out-patient facilities and dental clinic)  | A1 |
| 6. Chai Wan Health Centre (general out-patient facilities, family health centre, psychiatric clinic and methadone clinic)  | B1 |
| 7. David Trench Rehabilitation Centre (embracing Tang Shiu Kin Physiotherapy Unit, Hong Kong Psychiatric Centre and family health centre)  | A1 |
| 8. Eastern Street Methadone Clinic   | A1 |
| 9. Kennedy Town Jockey Club Clinic (general out-patient facilities, family health centre and dental clinic)  | A1 |
| 10. MacLehose Dental Centre  | A1 |
| 11. Aberdeen Police Training School Clinic (general out-patient facilities and dental clinic)  | A2 |
| 12. Port Health Inoculation Centre, Centre Point, Wanchai  | A1 |
| 13. Sai Ying Pun Jockey Club Clinic (general out-patient facilities, eye clinic, ENT clinic, chest clinic, social hygiene clinic, dermatological clinic, dental clinic and specialist clinic for Queen Mary Hospital)                                | A1 |
| 14. Shau Kei Wan Jockey Club Clinic (general out-patient facilities, family health centre, maternity home, eye clinic, ENT clinic, chest clinic, dermatological clinic and dental clinic)  | B1 |
| 15. Stanley Public Dispensary (general out-patient facilities and family health centre)  | B2 |
| 16. Tang Chi Ngong Specialist Clinic (family health centre, eye clinic, ENT clinic, dermatological clinic, general out-patient facilities for English-speaking Government Servants and their families and specialist clinic for Queen Mary Hospital) | A1 |
| 17. Violet Peel Health Centre (general out-patient facilities and methadone clinic)  | A1 |
| 18. Wan Chai Polyclinic (chest clinic, dental clinic and physiotherapy department)   | A1 |
| 19. Western Dental Clinic  | A1 |

PRISON HOSPITALS/TREATMENT CENTRES

- |   |    |
|---|----|
| 20. Cape Collinson Correctional Institution | B2 |
| 21. Ma Hang Prison                          | B2 |
| 22. Stanley Prison                          | B2 |
| 23. Tai Tam Gap Correctional Institution    | B1 |
| 24. Tung Tau Correctional Institution       | B2 |
| 25. Victoria Prison                         | A1 |



## B

KOWLOONGOVERNMENT HOSPITALS

- |  |    |
|--|----|
| a. Kowloon Hospital (a general hospital)   | A1 |
| b. Lai Chi Kok Hospital (a specialised hospital with a Psychiatric Unit and a Special Skin Unit) | A1 |
| c. Queen Elizabeth Hospital (a regional hospital for East Kowloon and East New Territories)      | A2 |

GOVERNMENT-ASSISTED HOSPITALS

- |   |    |
|---|----|
| d. Caritas Medical Centre (a general hospital with casualty department and out-patient facilities)    | A1 |
| e. Hong Kong Buddhist Hospital (a general hospital with out-patient facilities)                       | A1 |
| f. Kwong Wah Hospital (a regional hospital for West Kowloon)  | A2 |
| g. Margaret Trench Medical Rehabilitation Centre  | B2 |
| h. Our Lady of Maryknoll Hospital (a general hospital with out-patient facilities)                    | B1 |
| i. United Christian Hospital (a general hospital with casualty department and out-patient facilities) | B1 |
| j. Wong Tai Sin Infirmary   | B1 |

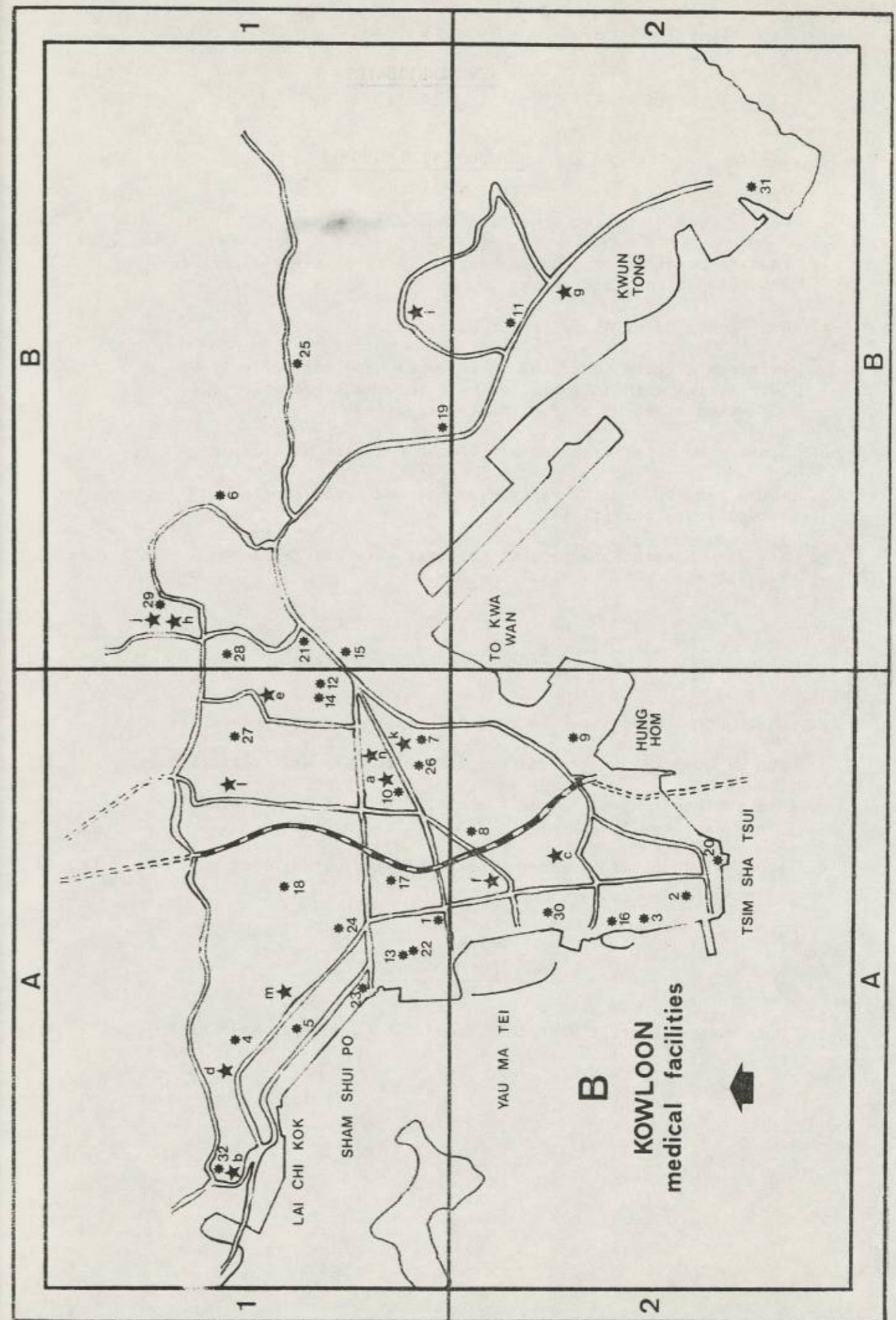
PRIVATE HOSPITALS

- |  |    |
|--|----|
| k. Evangel Hospital (a general hospital)           | A1 |
| l. Hong Kong Baptist Hospital (a general hospital) | A1 |
| m. Precious Blood Hospital (a general hospital)    | A1 |
| n. St. Teresa's Hospital (a general hospital)      | A1 |

OTHER GOVERNMENT INSTITUTIONS

- |  |    |
|--|----|
| 1. Argyle Street School Dental Clinic  | A1 |
| 2. Ashley Road Social Hygiene Clinic (male treatment centre for venereal disease)  | A2 |
| 3. Canton Road Government Medical Clinic (general out-patient facilities and dental clinic)  | A2 |
| 4. Cheung Sha Wan Jockey Club Clinic (general out-patient facilities, family health centre, maternity home and methadone clinic)                               | A1 |
| 5. Cheung Sha Wan Police Quarters Clinic (general out-patient facilities and dental clinic)  | A1 |
| 6. East Kowloon Polyclinic (general out-patient facilities, family health centre and chest clinic)   | B1 |
| 7. Farm Road Dental Clinic   | A1 |
| 8. Ho Man Tin Methadone Clinic   | A2 |
| 9. Hung Hom Clinic (general out-patient facilities, family health centre and methadone clinic)   | A2 |
| 10. Kowloon Hospital Out-patient Department (general out-patient facilities, chest clinic and special skin clinic)   | A1 |
| 11. Kwun Tong Jockey Club Health Centre (general out-patient facilities, family health centre, maternity home, eye clinic, methadone clinic and dental clinic) | B2 |
| 12. Li Kee Memorial Dispensary (general out-patient facilities, methadone clinic and dental clinic)  | A1 |
| 13. Li Po Chun Health Centre (general out-patient facilities, family health centre, maternity home and methadone clinic)                                       | A1 |
| 14. Lions Club Maternal and Child Health Centre (family health centre and maternity home)  | A1 |
| 15. Medical Clinic, Kai Tak Airport  | B1 |
| 16. Medical Examination Board  | A2 |
| 17. Mong Kok Dental Clinic   | A1 |
| 18. Nam Shan Health Centre (general out-patient facilities and family health centre)   | A1 |
| 19. Ngau Tau Kok Jockey Club Clinic (general out-patient facilities, family health centre and maternity home)  | B1 |
| 20. Port Health Inoculation Centre, New World Centre, Tsim Sha Tsui  | A2 |

- |   |    |
|---|----|
| 21. Robert Black Health Centre (general out-patient facilities, family health centre, ENT clinic and methadone clinic)  | B1 |
| 22. Rotary Club of Kowloon Child Assessment Clinic (Arran Street)   | A1 |
| 23. Sham Shui Po Public Dispensary (general out-patient facilities and methadone clinic)  | A1 |
| 24. Shek Kip Mei Health Centre (general out-patient facilities, family health centre, chest clinic, dermatological clinic and methadone clinic)   | A1 |
| 25. Shun Lee Government Clinic (general out-patient facilities)   | B1 |
| 26. Tin Kwong Road Dental Clinic  | A1 |
| 27. Wang Tau Hom Jockey Club Clinic (general out-patient facilities, family health centre, maternity home, eye clinic and methadone clinic)   | A1 |
| 28. Wong Tai Sin Police Quarters Clinic (general out-patient facilities and dental clinic)  | B1 |
| 29. Wu York Yu Health Centre (general out-patient facilities, family health centre, maternity home and methadone clinic)  | B1 |
| 30. Yau Ma Tei Jockey Club Clinic (general out-patient facilities, family health centre, eye clinic, ENT clinic, chest clinic, psychiatric clinic, social hygiene clinic, dermatological clinic, methadone clinic, dental clinic and X-ray survey centre) | A2 |
| 31. Yau Tong Maternal and Child Health Centre (family health centre)  | B2 |
| <u>PRISON HOSPITAL/TREATMENT CENTRE</u>   |    |
| 32. Lai Chi Kok Reception Centre  | A1 |



NEW TERRITORIESGOVERNMENT HOSPITALS

a. Castle Peak Hospital (a mental hospital)	A1
b. Fanling Hospital (a general hospital with casualty department and out-patient facilities)	B1
c. Kwai Chung Hospital (a mental hospital)	A2
d. Princess Margaret Hospital (a regional hospital for West New Territories with an isolation unit for the segregation of suspected cases of quarantinable diseases)	A2
e. Siu Lam Hospital (a hospital for the mentally handicapped)	A2
f. South Lantau Hospital (a general hospital with general out-patient facilities)	A2
g. St. John Hospital (a general hospital with out-patient facilities)	A2

GOVERNMENT-ASSISTED HOSPITALS

h. Haven of Hope Hospital (a tuberculosis and general hospital)	B2
i. Pok Oi Hospital (a general hospital with out-patient facilities)	A1
j. The Society for the Aid and Rehabilitation of Drug Abusers (Shek Kwu Chau Treatment and Rehabilitation Centre)	A2
k. Yan Chai Hospital (a general hospital with out-patient facilities)	A2

PRIVATE HOSPITAL

l. Hong Kong Adventist Hospital, Tsuen Wan (a general hospital)	A1
---	----

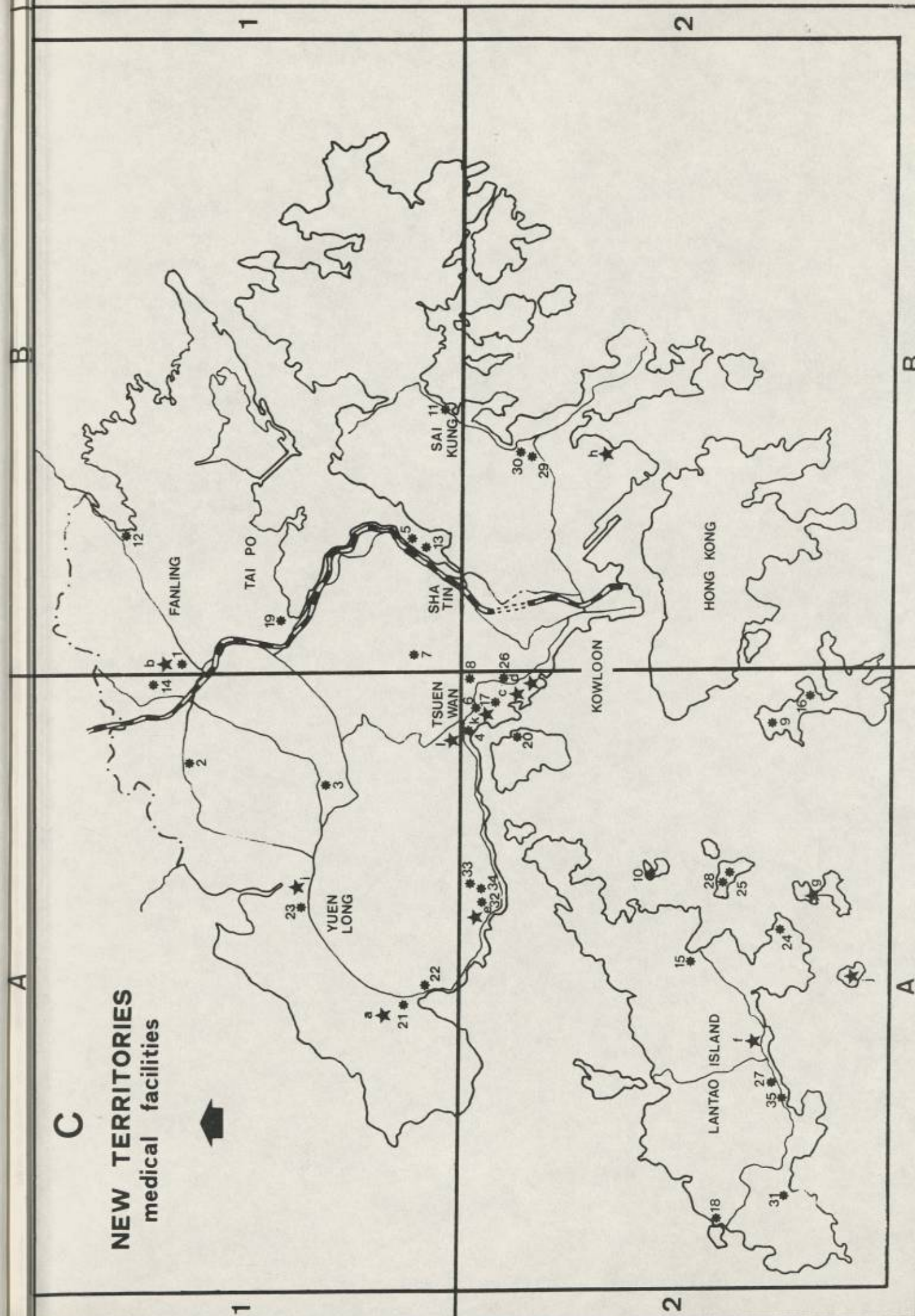
OTHER GOVERNMENT INSTITUTIONS

1. Fanling Dental Clinic	B1
2. Ho Tung Dispensary (general out-patient facilities)	A1
3. Kam Tin Health Centre (general out-patient facilities and family health centre)	A1
4. Lady Trench Polyclinic (general out-patient facilities, eye clinic, dermatological clinic, methadone clinic and dental clinic)	A2
5. Lek Yuen Health Centre (general out-patient facilities and family health centre)	B1
6. Maurine Grantham Health Centre (family health centre and maternity home)	A2
7. Mrs. Wu York Yu Health Centre (general out-patient facilities, family health centre and maternity home)	B1
8. North Kwai Chung Clinic (general out-patient facilities, family health centre and methadone clinic)	A2
9. North Lamma Clinic (general out-patient facilities, family health centre and maternity home)	A2
10. Peng Chau Clinic (general out-patient facilities, family health centre, maternity home, eye clinic, special skin clinic and social hygiene clinic)	A2
11. Sai Kung Government Clinic (general out-patient facilities, family health centre, maternity home, eye clinic and chest clinic)	B1
12. Sha Tau Kok Clinic (general out-patient facilities, family health centre and maternity home)	B1
13. Sha Tin Clinic and Maternity Home (general out-patient facilities, family health centre, maternity home, chest clinic and methadone clinic)	B1
14. Shek Wu Hui Jockey Club Clinic (general out-patient facilities, maternity home, eye clinic, chest clinic, social hygiene clinic and methadone clinic)	A1
15. Mui Wo Dispensary (general out-patient facilities, family health centre and maternity home)	A2
16. Sok Kwu Wan Clinic (general out-patient facilities)	A2
17. South Kwai Chung Jockey Club Polyclinic (general out-patient facilities, family health centre, maternity home, eye clinic, ENT clinic, chest clinic, psychiatric clinic, social hygiene clinic and specialist clinic for Princess Margaret Hospital)	A2

- |  |    |
|--|----|
| 18. Tai O Jockey Club Clinic (general out-patient facilities, family health centre, maternity home, chest clinic and dental clinic)  | A2 |
| 19. Tai Po Jockey Club Clinic (general out-patient facilities, family health centre, maternity home, eye clinic, chest clinic, special skin clinic, social hygiene clinic and dental clinic)                             | B1 |
| 20. Tsing Yi Clinic (general out-patient facilities and family health centre)  | A2 |
| 21. Tuen Mun Clinic (general out-patient facilities, maternity home, eye clinic and methadone clinic)  | A1 |
| 22. Yan Oi Polyclinic (general out-patient facilities, family health centre, chest clinic and dental clinic)   | A1 |
| 23. Yuen Long Jockey Club Health Centre (general out-patient facilities, family health centre, maternity home, eye clinic, chest clinic, special skin clinic, social hygiene clinic, methadone clinic and dental clinic) | A1 |

PRISON HOSPITALS/TREATMENT CENTRES

- |  |    |
|--|----|
| 24. Chi Ma Wan Closed Centre                 | A2 |
| 25. Hei Ling Chau Addiction Treatment Centre | A2 |
| 26. Lai King Training Centre                 | A2 |
| 27. Ma Po Ping Prison                        | A2 |
| 28. Nei Kwu Chau Correctional Institution    | A2 |
| 29. Pik Uk Correctional Institution          | B2 |
| 30. Pik Uk Prison                            | B2 |
| 31. Sha Tsui Detention Centre                | A2 |
| 32. Siu Lam Psychiatric Centre               | A2 |
| 33. Tai Lam Centre for Women                 | A2 |
| 34. Tai Lam Correctional Institution         | A2 |
| 35. Tong Fuk Centre                          | A2 |



**FIGURES**

INDEX TO FIGURES

	<u>FIGURE NO.</u>
<b>I. <u>Vital Statistics</u></b>	
Infant and Neo-natal Mortality Rate 1961 to 1982	1
Age Specific Death Rate by Sex 1982	2
<b>II. <u>Communicable Diseases</u></b>	
Notification Rate of Major Infectious Diseases 1961 to 1982	3
Monthly Measles Notification 1961 to 1982	4
<b>III. <u>Health Services</u></b>	
Tuberculosis Mortality Rate by Age and Sex 1972 and 1982	5
Tuberculosis Notification Rate by Age and Sex 1972 and 1982	6
Tuberculosis Mortality Rate and Percentage of Newborns Vaccinated (B.C.G.) 1952 to 1982	7
Total Syphilis (Non-congenital) 1968 to 1982	8
Gonorrhoea 1968 to 1982	9
<b>IV. <u>Hospital Services</u></b>	
Hospital Beds 1973 to 1982	10
<b>V. <u>Clinic Services</u></b>	
Total Out-patient Attendances in Government Institutions 1973 to 1982	11

**FIGURE 1  
INFANT AND NEO-NATAL MORTALITY RATE 1961 - 1982**

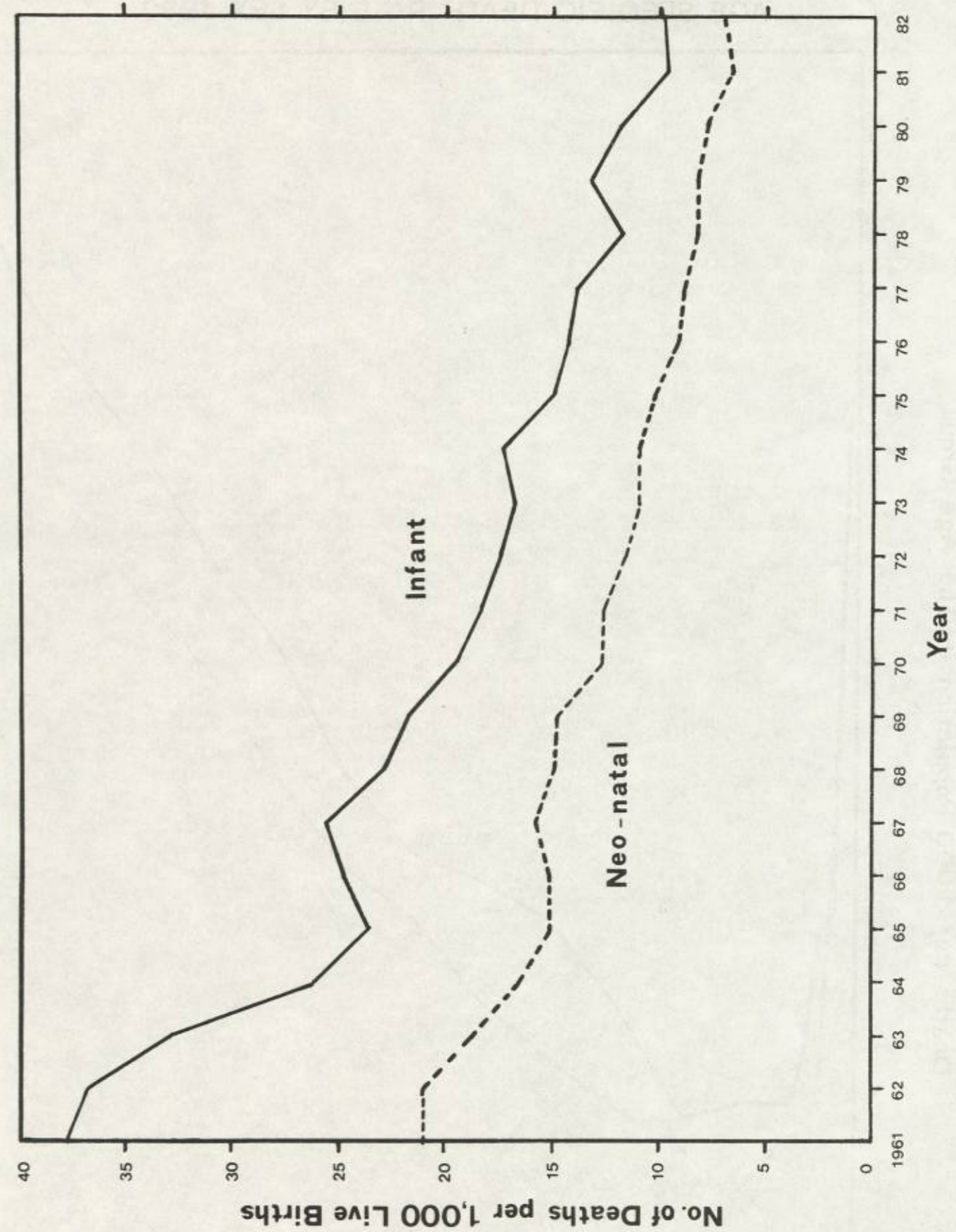


FIGURE 2  
AGE SPECIFIC DEATH RATE BY SEX 1982

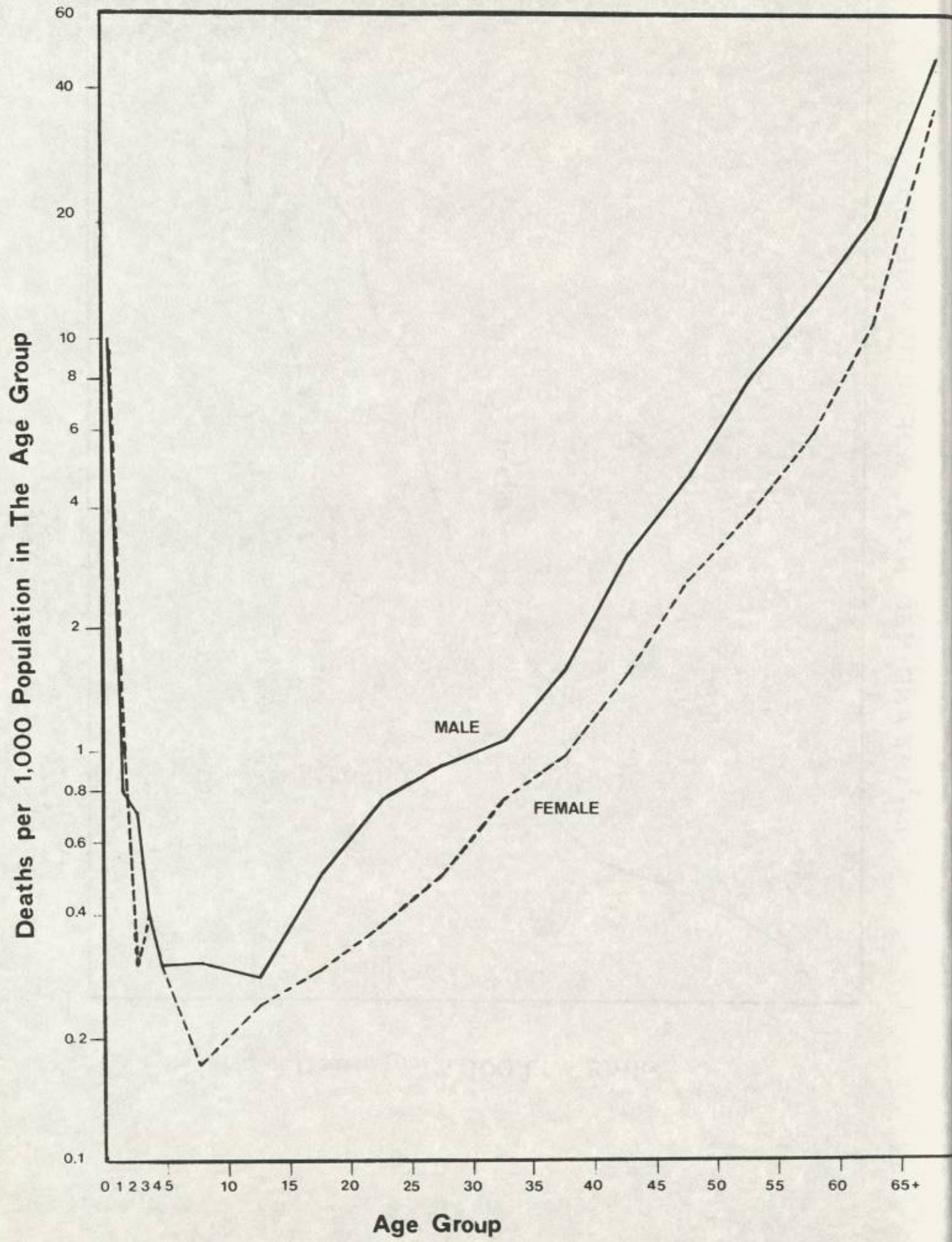
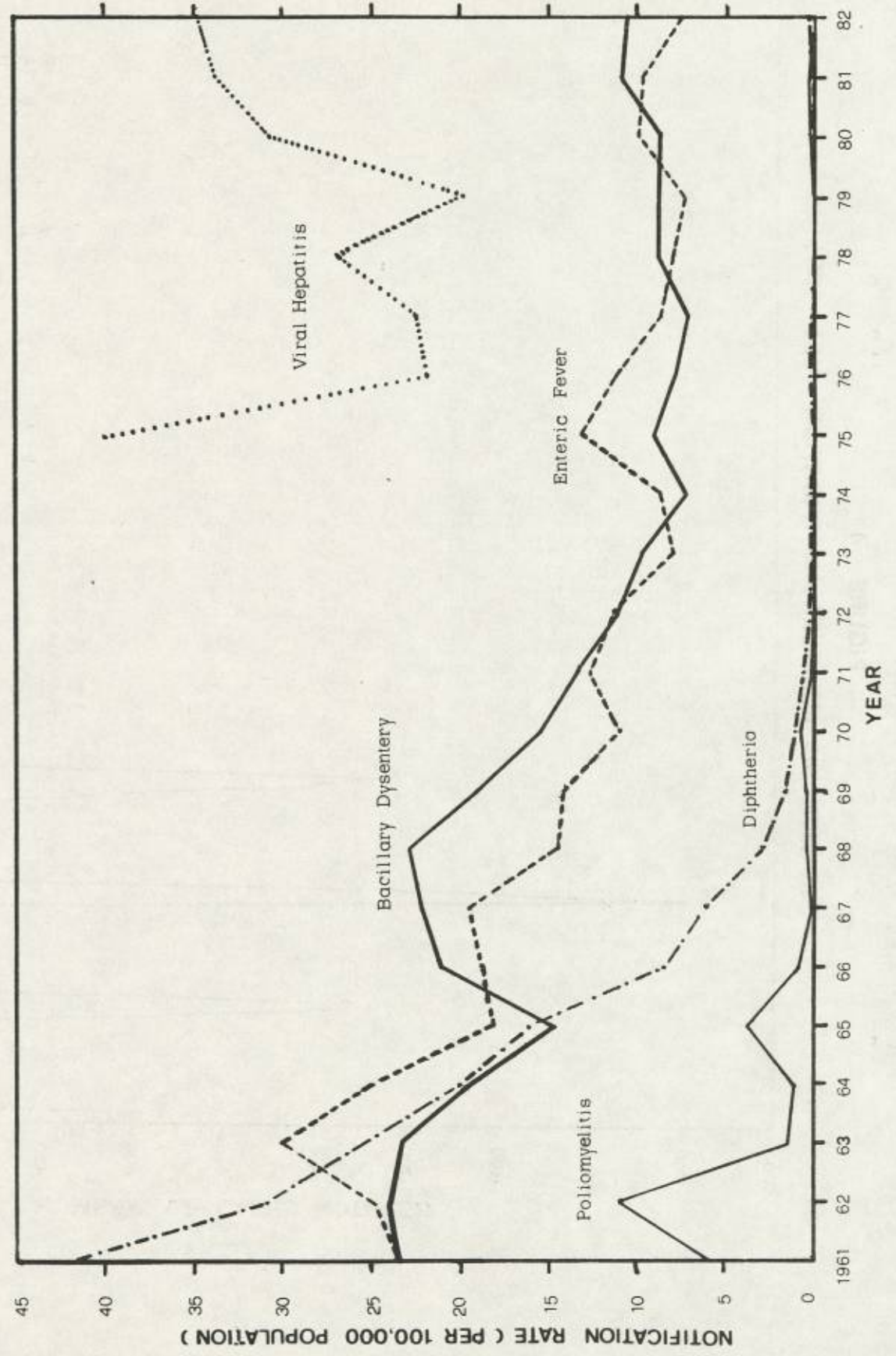
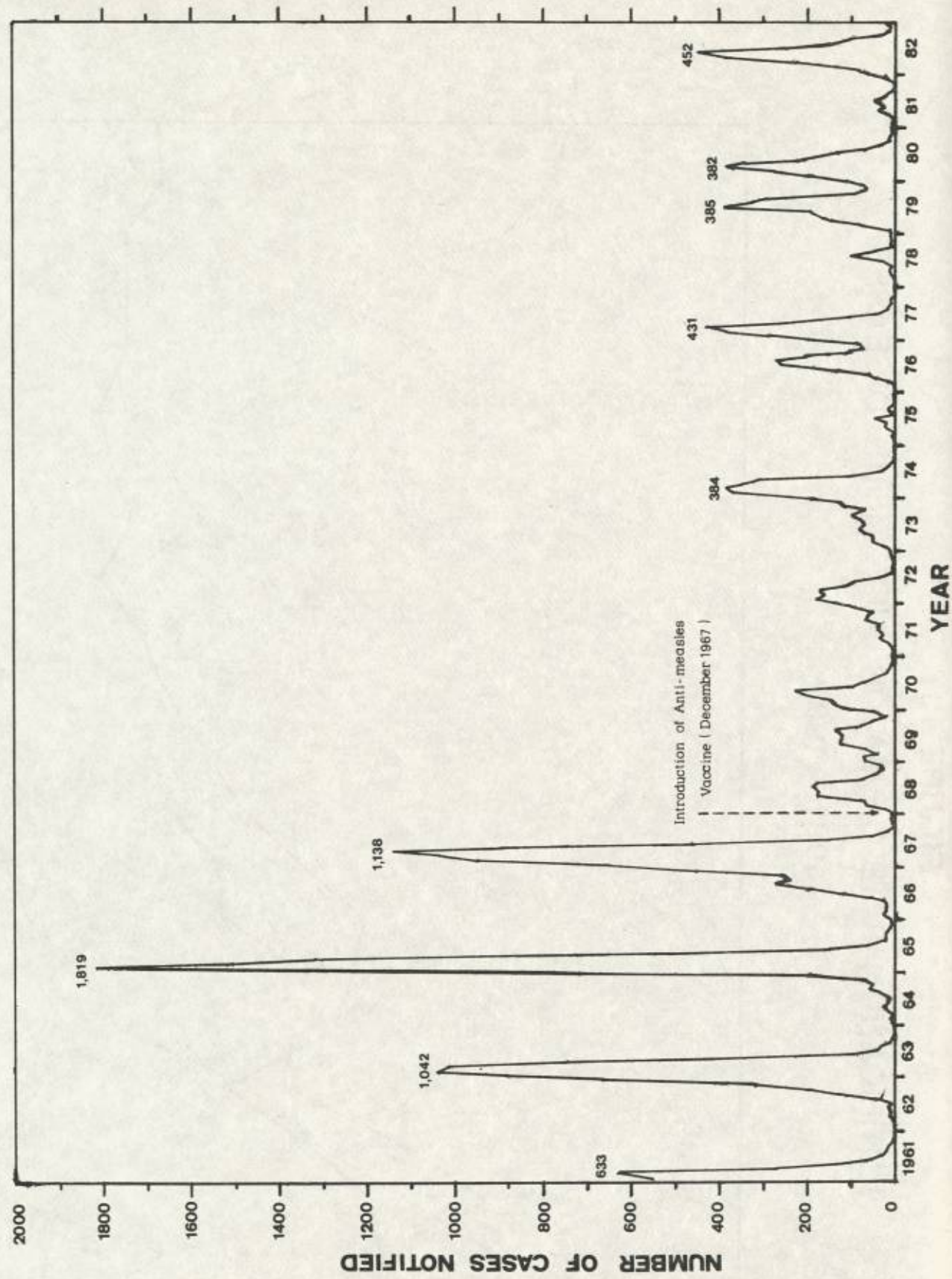


FIGURE 3  
NOTIFICATION RATE OF MAJOR INFECTIOUS DISEASES  
1961 - 1982

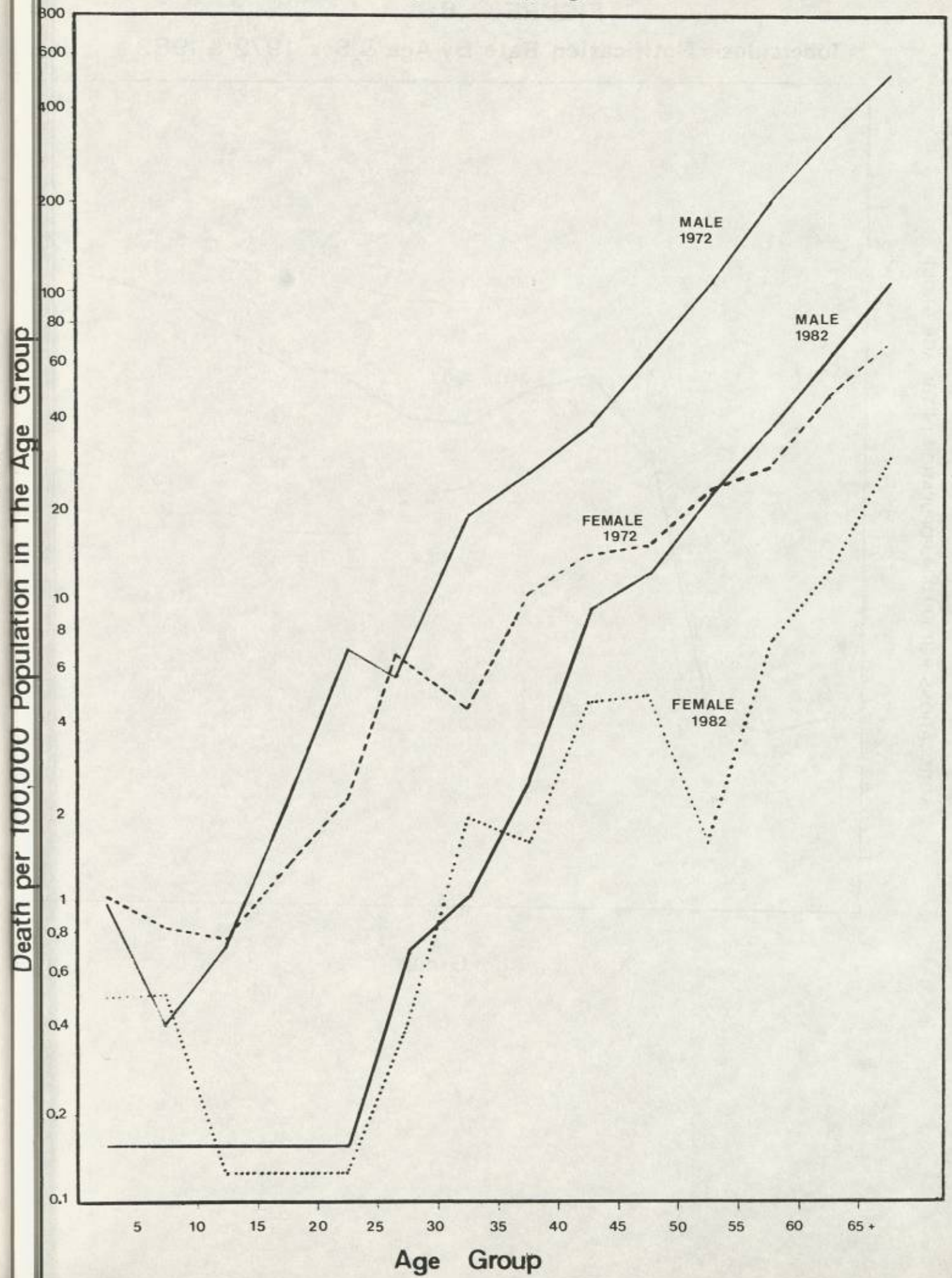


**FIGURE 4**  
MONTHLY MEASLES NOTIFICATION 1961 - 1982

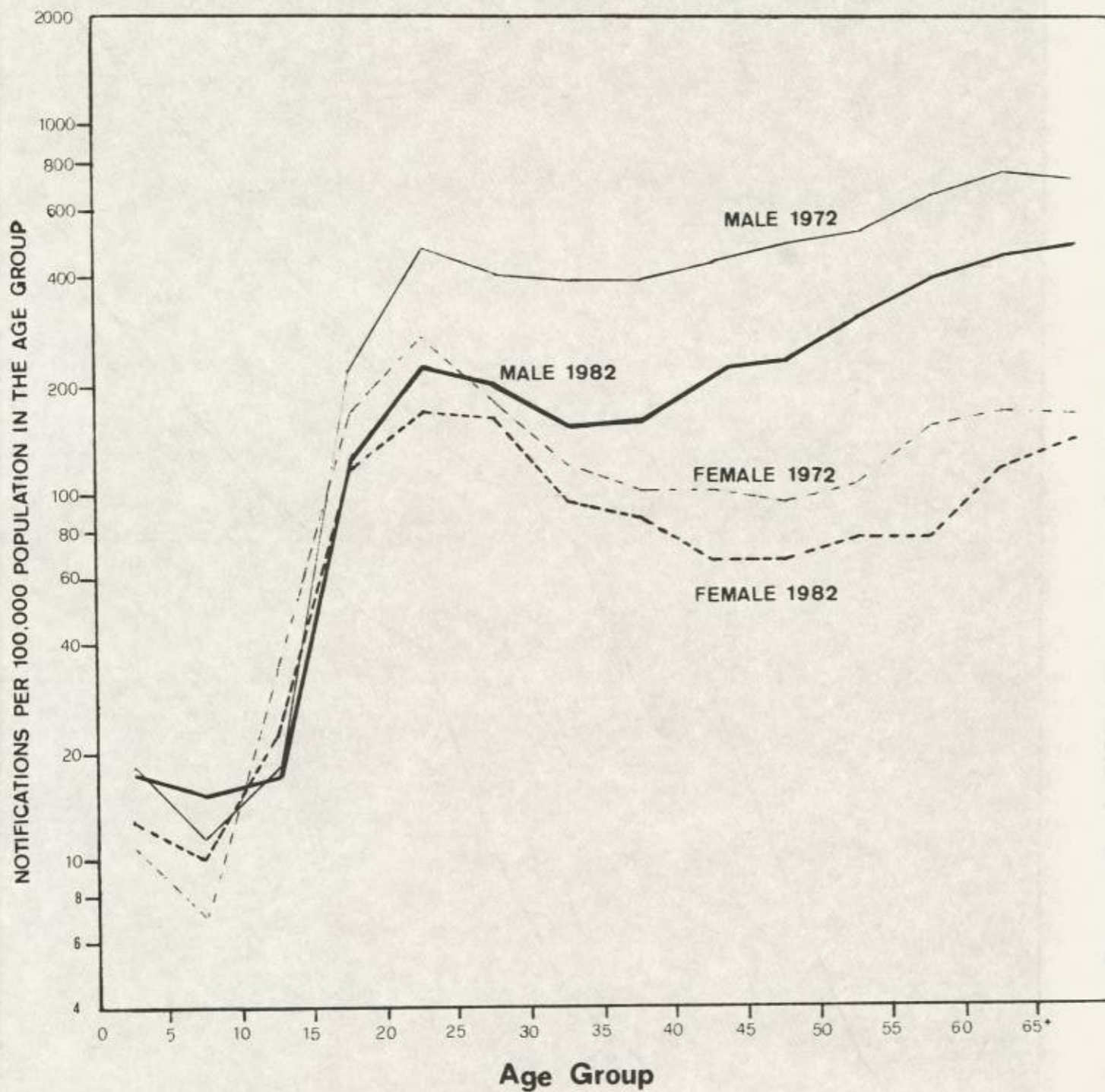


**FIGURE 5**

Tuberculosis Mortality Rate By Age & Sex 1972 & 1982



**FIGURE 6**  
**Tuberculosis Notification Rate By Age & Sex 1972 & 1982**



**FIGURE 7**  
**TUBERCULOSIS MORTALITY RATE & PERCENTAGE OF NEWBORNS VACCINATED (B.C.G.) 1952 - 1982**

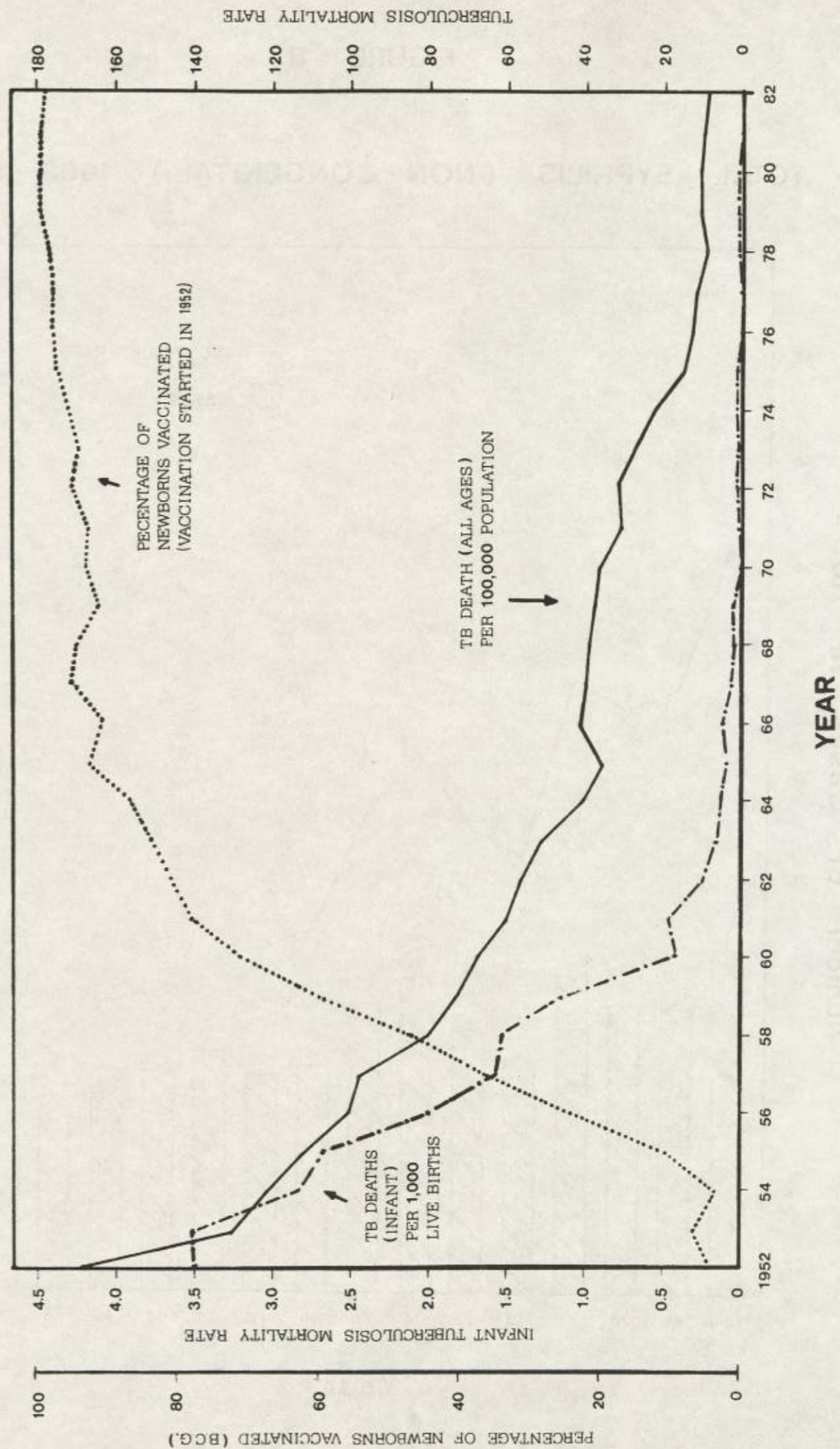
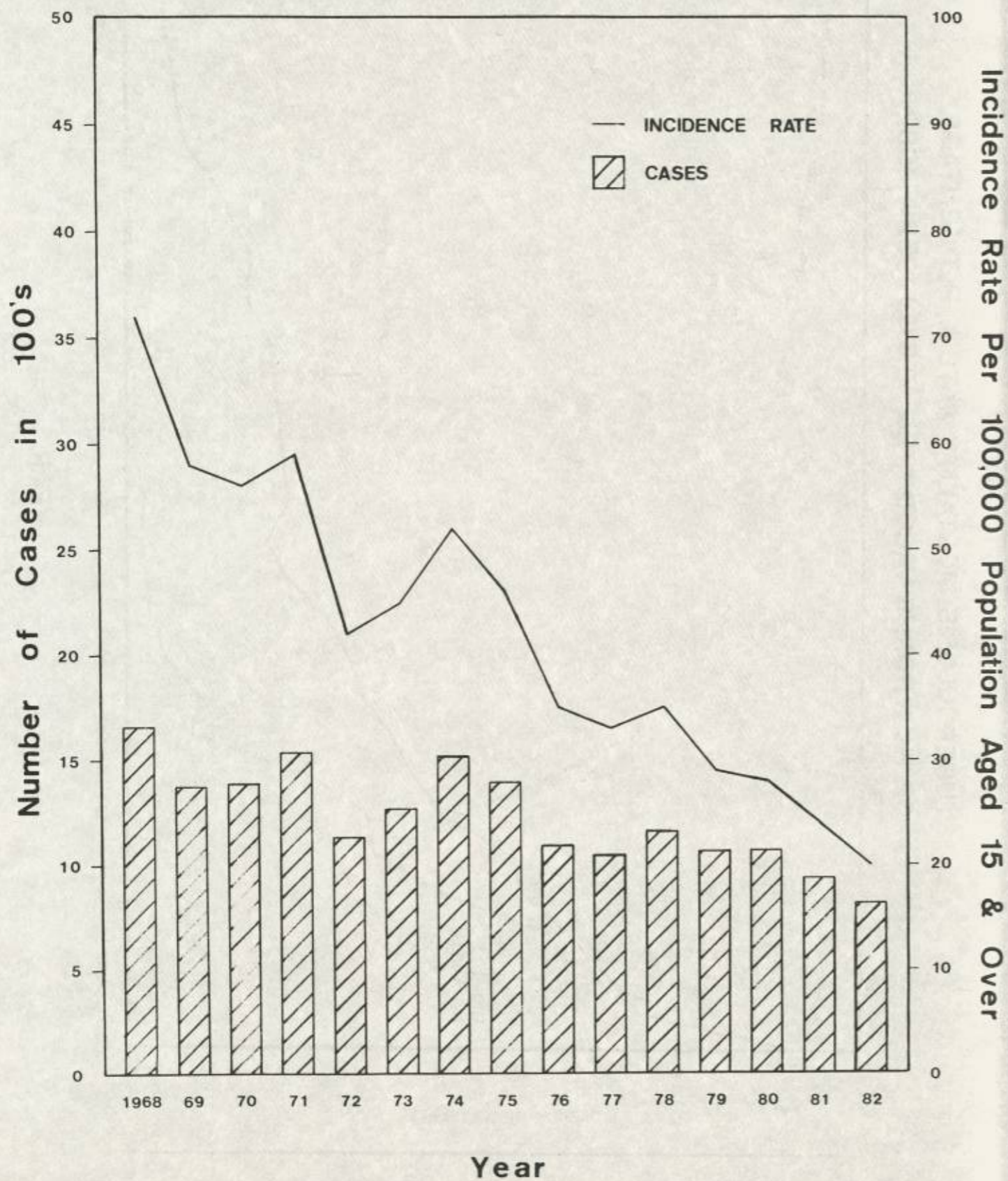


FIGURE 8

TOTAL SYPHILIS (NON-CONGENITAL) 1968 - 1982



Incidence Rate Per 100,000 Population Aged 15 & Over

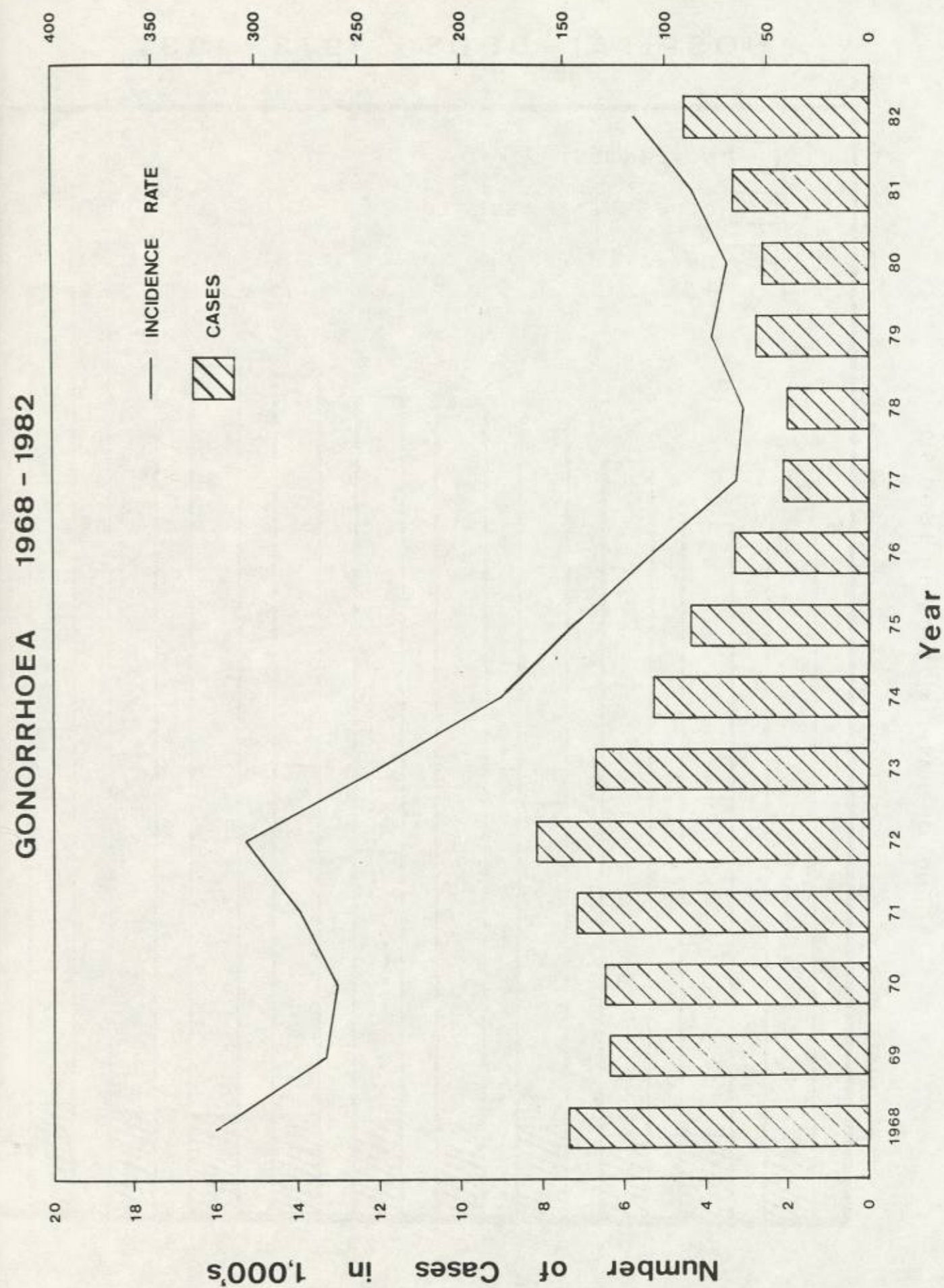


FIGURE 9

GONORRHOEA 1968 - 1982

FIGURE 10

HOSPITAL BEDS 1973 - 1982

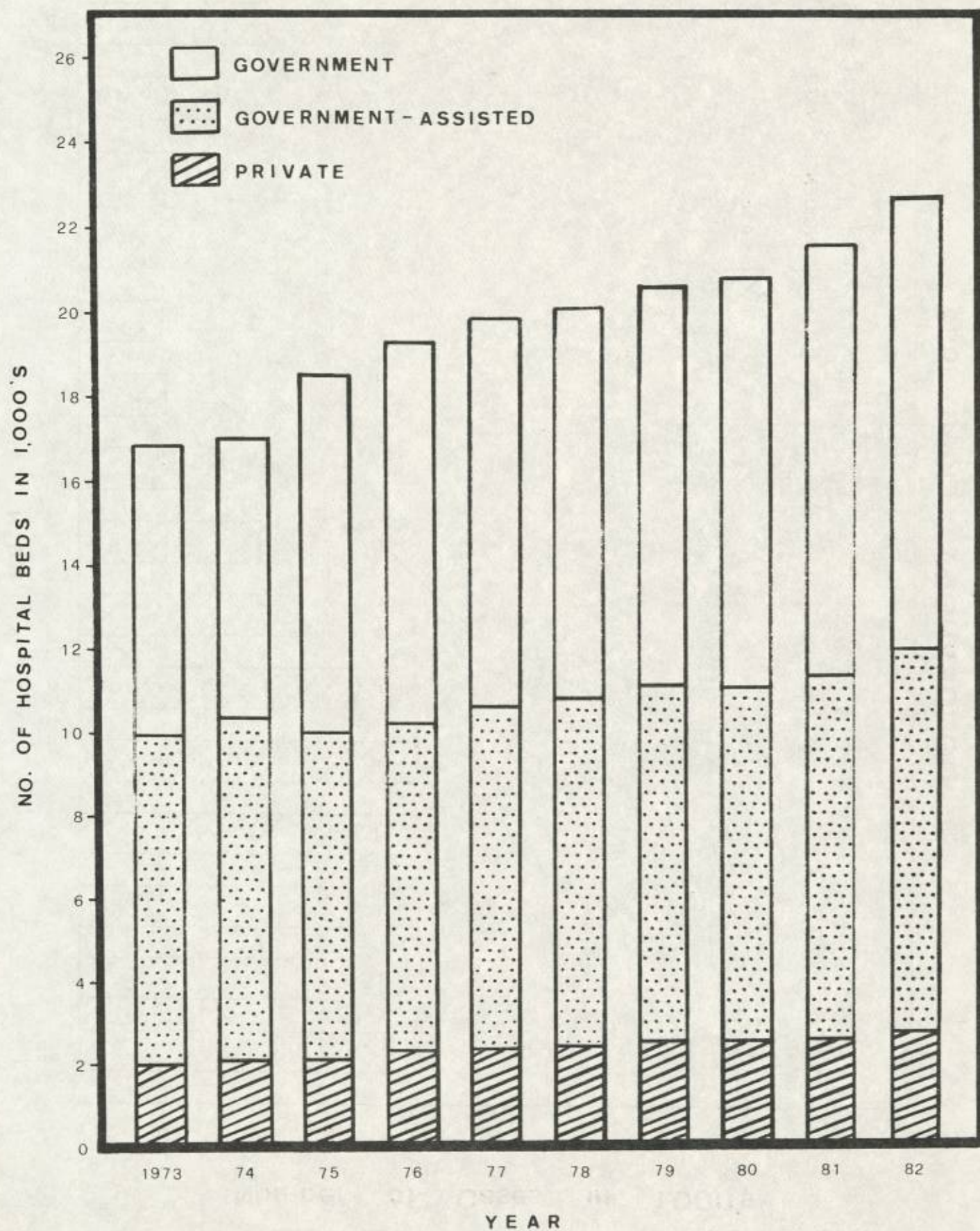
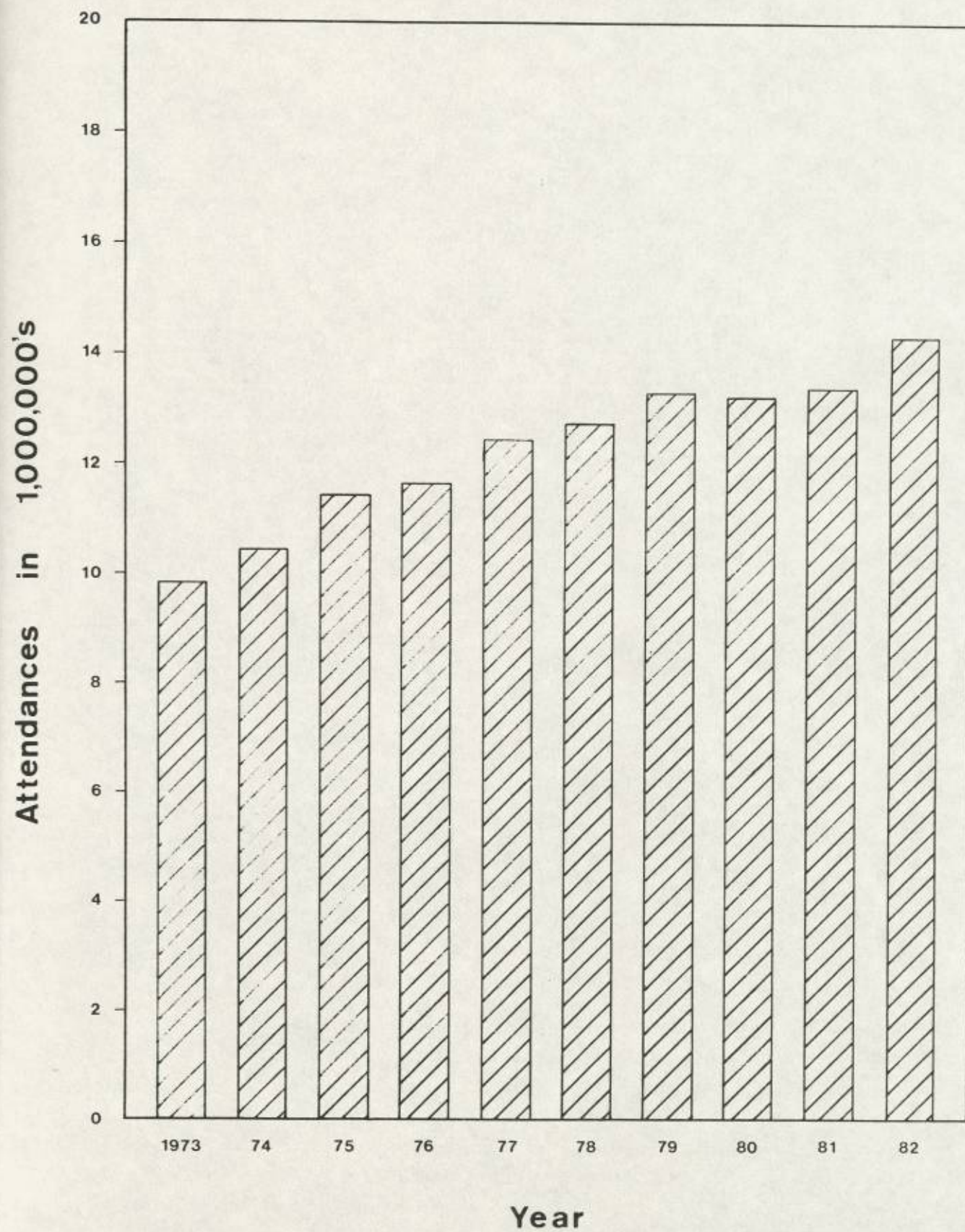


FIGURE 11

TOTAL OUT-PATIENT ATTENDANCES IN GOVERNMENT INSTITUTIONS 1973 - 1982



**STATISTICAL TABLES**

INDEX TO STATISTICAL TABLES

	<u>TABLE NO.</u>
<b>I. <u>Administration</u></b>	
Establishment of the Medical and Health Department as at 31st March 1983	1
Organisation of Medical and Health Department 1982/83	2
Organisation of a Region	2(a)
Statement of Expenditure from 1978/79 to 1982/83	3
Legislation of Medical and Health Importance - April 1982 to March 1983	4
Work of Statutory Councils - April 1982 to March 1983	5
Work of Statutory Boards - April 1982 to March 1983	6
Supplementary Medical Professions Council - April 1982 to March 1983	6(a)
Details of Licences Issued by the Radiation Board - April 1982 to March 1983	6(b)
<b>II. <u>Vital Statistics</u></b>	
Estimated Population by Age Group at Mid-1982	7
Vital Statistics - Hong Kong (Absolute Number) 1956 to 1982	8
Vital Statistics - Hong Kong (Rate) 1956 to 1982	9
Hong Kong Death Rates 1968 to 1982	10
Major Causes of Infant Deaths 1961, 1972 and 1978 to 1982	11
Major Causes of Maternal Deaths 1961, 1972 and 1978 to 1982	12
Proportionate Mortality by Disease Group 1961, 1972 and 1978 to 1982	13
The Ten Leading Causes of Death by Age and Sex 1982	14
Supplementary Classification of External Causes of Injury and Poisoning 1982	14(a)
Leading Causes of Death 1961, 1972 and 1982	15
Number of Cancer Deaths by Age and Sex 1982	16
Main Causes of Death from Cancer in Hong Kong 1973 to 1982	17
New Cases of Cancer Notified to the Cancer Registry by Age and Sex 1980	18
New Overseas Cases of Cancer Diagnosed in Hong Kong 1980	19
Deaths from Heart Diseases by Age and Sex 1982	20

	<u>TABLE NO.</u>
<b>III. <u>Communicable Diseases</u></b>	
Infectious Diseases Notified 1978 to 1982	21
Notification and Death Rates of Certain Infectious Diseases 1978 to 1982	22
Principal Infectious Diseases Notified by Age and Sex 1982	23
Malaria 1978 to 1982	24
Prophylactic Immunizations 1978 to 1982	25
<b>IV. <u>Health Services</u></b>	
<b>a) Tuberculosis and Chest Service</b>	
Tuberculosis Mortality 1961, 1972 and 1978 to 1982	26
Tuberculosis in Childhood 1961, 1972 and 1978 to 1982	27
Tuberculosis Notifications 1961, 1972 and 1978 to 1982	28
Work of Tuberculosis and Chest Service 1982	29
Examination of New Contacts of Tuberculosis Patients 1982	30
<b>b) Social Hygiene Service</b>	
Annual Attendances & Trend of Venereal Diseases 1973 to 1982	31
VDRL Examinations in Expectant Mothers 1978 to 1982	32
Leprosy Cases 1973 to 1982	33
Analysis of Dermatological Conditions Presenting at Clinics 1982	34
<b>c) Family Health Service</b>	
Distribution of Family Health Centres as at 31st March 1983	35
Work of Family Health Service (Maternal and Child Health) 1981 and 1982	36
Work of Family Health Service (Comprehensive Observation Service) 1981 and 1982	37
Work of Family Health Service (Family Planning) 1981 and 1982	38

TABLE NO.

d) Occupational Health Service	
Work of Occupational Health Division 1981 and 1982	39
Environmental and Biological Monitoring and Survey Work of Occupational Health Division 1982	40
e) Port Health Service	
Work of Port Health Service 1981 and 1982	41
V. <u>Hospital Services</u>	
a) Hospital Beds and In-patients	
Number of Hospital Beds in Hong Kong as at 31st December 1982	42
In-patients Treated in Government, Government- assisted and Private Institutions 1982	43
Disease Classification of In-patients Treated in Hospitals and of all Deaths in Hong Kong 1982	44
b) Government Hospitals	
Cost of Selected Hospitals 1981/82 and 1982/83	45
Work of Queen Mary, Tang Shiu Kin, Queen Elizabeth and Princess Margaret Hospitals 1982	46
Work of the Tsan Yuk Hospital 1981 and 1982	47
Psychiatric In-patients 1982	48
Work of Hospital Casualties 1978 to 1982	49
Analysis of Casualty Cases Treated in Hospital 1982	50
c) Government-assisted Hospital	
Government Medical Subventions to Voluntary Institutions 1978/79 to 1982/83	51
Work of Kwong Wah Hospital, United Christian Hospital and Caritas Medical Centre 1982	52
Work of the Grantham Hospital 1981 and 1982	53
Work of Ruttonjee Sanatorium 1981 and 1982	54

TABLE NO.

VI. <u>Clinic Services</u>	
Total Out-patient Attendances at Government and Government-assisted Institutions 1982	55
Total Attendances at Specialist Clinics in Government and Government-assisted Institutions 1982	56
Psychiatric Day-patients and Out-patients 1982	57
Work of Ophthalmic Service 1981 and 1982	58
Causes for Permanent Blindness Registration 1981 and 1982	59
Work of Ear-Nose-Throat Service 1981 and 1982	60
Work of General Dental Service 1978 to 1982	61
Work of Arran Street Child Assessment Clinic 1981 and 1982	62
District Midwifery Service 1981 and 1982	63
School Medical Service 1982/83	64
Medical Clinics Registration as at 31st March 1983	65
VII. <u>Special Services</u>	
Work of the Institute of Pathology 1981 and 1982	66
Work of Blood Banks 1982	67
Work of Public Mortuaries 1981 and 1982	68
Work of Radiodiagnostic Division 1982	69
Work of Radiotherapeutic Division 1981 and 1982	70
Work of Forensic Pathology Laboratories 1981 and 1982	71
VIII. <u>Other Services</u>	
Work of Pharmaceutical Service 1981/82 and 1982/83	72
Work of Medical Social Service 1982	73
Work of Physiotherapy Service 1982	74
Work of Occupational Therapy Service 1982	75
Work of Prosthetic-Orthotic Service 1982	76
Work of Medical Examination Board 1981 and 1982	77

	<u>TABLE NO.</u>
IX. <u>Training Programme</u>	
Training of Nursing Staff in 1982	78
Overseas Courses of Instruction 1982/83	79
Departmental Training 1982/83	80
X. <u>Medical Development</u>	
Building Programme 1982/83	81
XI. <u>Miscellaneous</u>	
Attendance at Conferences etc. Overseas 1982/83	82
Overseas Visitors 1982/83	83
Publications 1982/83	84
Samaritan Fund 1982/83	85
List of Donations Received for the Year Ended 31st March 1983	86

TABLE 1 ESTABLISHMENT OF THE MEDICAL & HEALTH DEPARTMENT AS AT 31.3.1983

Grade	Zone	Strength on 31.3.83								
		Headquarters & Health/Miscellaneous Services	Kowloon Hospital	Prince of Wales Hospital	Princess Margaret Hospital	Queen Elizabeth Hospital	Queen Mary Hospital	Medical Services	Mental Health Service	Total
Director of Medical & Health Services		1								1
Deputy Director of Medical & Health Services		2								2
Senior Assistant Director of Medical & Health Services		4								4
Assistant Director of Medical & Health Services		3+1@		+1@						3+2@
Consultant (Incl. Dental)		12	1		15	24	10	7		82+1#
Principal Medical & Health Officer		14	1	1	1	1	1	2		20
Senior Medical & Health Officer/Medical & Health Officer		192	29	35	179	269	112	324	71	1211
Nursing Director		1								1
*Nursing Staff (Incl. Psychiatric Nursing Staff)		877	466	572	1240	1678	1253	875	956	7917
Senior Inoculator/Inoculator		107								107
*Senior Midwife/Midwife/Student Midwife		152			17		12	154		335
Principal Dental Officer/Senior Dental Officer/ Dental Officer/Assistant Dental officer		110	3		3	4	2		4	126
Dental Hygienist/Student Dental Hygienist		3								3
Dental Inspector		2								2
Senior Dental Surgery Assistant/Dental Surgery Assistant		119	3		3	4	3		4	136



TABLE 1 ESTABLISHMENT OF THE MEDICAL & HEALTH DEPARTMENT AS AT 31.3.1983 (Cont'd)

Grade	Zone	Headquarters & Health/Miscellaneous Services	Kowloon Hospital	Prince of Wales Hospital	Princess Margaret Hospital	Queen Elizabeth Hospital	Queen Mary Hospital	Medical Services	Mental Health Service	Total	Strength on 31.3.83
Laundry Manager/Assistant Laundry Manager		3				3				6	6
Linens Production Unit Manager/Linens Production Unit Supervisor		5				1				6	6
Machinist		84								84	83
Medical Board Assistant		1								1	1
Mortuary Supervisor					1	2	1	3		7	7
*Orthoptist I/Orthoptist II								3		3	3
Senior Optical Technician/Optical Technician								5		5	5
Photographer I/Photographer II					1	2	1	1		5	5
Senior Prosthetist/Prosthetist I/Prosthetist II/Student Prosthetist				11		6		24		41	41
Scientific Officer (Medical)					2	4		9		15	15
Speech Therapist								3		3	3
Tailor		4								4	4
Senior Training Officer		1								1	1
Training Officer (AMS)		1								1	-

TABLE 1 ESTABLISHMENT OF THE MEDICAL & HEALTH DEPARTMENT AS AT 31.3.1983 (Cont'd)

Grade	Zone	Headquarters & Health/Miscellaneous Services	Kowloon Hospital	Prince of Wales Hospital	Princess Margaret Hospital	Queen Elizabeth Hospital	Queen Mary Hospital	Medical Services	Mental Health Service	Total	Strength on 31.3.83
*Administrative Officer Staff Grade 'B' / Administrative Officer Staff Grade 'C' / Senior Administrative Officer/Administrative Officer		5+3@								5+3@	8
Chief Management Services Officer/Senior Management Services Officer/Management Services Officer I/Management Services Officer II		7								7	7
*Principal Executive Officer/Chief Executive Officer/Senior Executive Officer/Executive Officer I/Executive Officer II		40				1				41	46
*Chinese Language Officer I/Chinese Language Officer II		1								1	2
*General Grade Staff		667	40	8	112	174	101	319	100	1521	1563
Senior Health Inspector/Health Inspector I/Health Inspector II		11								11	11
Chief Information Officer/Senior Information Officer/Information Officer/Assistant Information Officer I/Assistant Information Officer II		9								9	9
Senior Statistician/Statistician/Statistical Officer I/Statistical Officer II/Student Statistical Officer		23			1	2	1			27	26
*Chief Supplies Officer/Senior Supplies Officer/Supplies Officer/Assistant Supplies Officer/Supplies Supervisor I/Supplies Supervisor II/Supplies Assistant		37	6	3	10	10	6	24	11	107	103