



DAILY INFORMATION BULLETIN

ISSUED BY GOVERNMENT INFORMATION SERVICES
BEACONSFIELD HOUSE, HONG KONG. TEL: 5-233191

FRIDAY, APRIL 4, 1986

<u>CONTENTS</u>	<u>PAGE NO.</u>
MARIA TAM APPOINTED TAC CHAIRMAN	1
GOVERNOR SEES CHANGING ENVIRONMENT IN WAN CHAI	3
SIR EDWARD PLEASED WITH ADVISORY BOARDS	4
PROTECTION SOUGHT FOR NAMING DISHONEST TRADERS	6
NEW LEGISLATION ON MARINE FEES AND CHARGES	7
JANUARY RETAIL SALES SURVEY RESULTS OUT	8
EXPERIMENTAL STUDY ON CODISPOSAL OF WASTES UNDERWAY	12
BY-ELECTIONS FOR TWO DISTRICTS NEXT MONTH	13
BILL SEEKS UPDATE OF TREATMENT CENTRE LAW	14
BETTER FACILITIES FOR TRAINING OF NURSES	15
NEW I.D. CARD FOR WOMEN BORN 1931 - 1934	16
REGISTRATION TAX BENEFIT FOR DISABLED DRIVERS	17
BOOKLET ABOUT ISLANDS DISTRICT PRODUCED	18
SPECIAL STAMP BOOKLET TO MARK BANK OPENING	18
RE-APPOINTMENT TO MTRC BOARD	19
KWUN TONG FORUM ON HAWKER POLICIES	19
TREE PLANTING SCHEME PROVING POPULAR	20
FIRST ANNUAL CONCERT BY YOUTH SYMPHONY ORCHESTRA	21
KWAI CHUNG, TSING YI FUNDS FOR YOUTH PROGRAMME	21
IMPROVED FACILITIES FOR CHILDREN AT PARK	22
TRAFFIC ARRANGEMENTS FOR HONG KONG ISLAND	23
TRAFFIC AND TRANSPORT CHANGES	23

FRIDAY, APRIL 4, 1986

- 1 -

MARIA TAM APPOINTED TAC CHAIRMAN
* * * *

THE GOVERNOR HAS APPOINTED MISS MARIA TAM TO SUCCEED MR GERALD FORSGATE AS CHAIRMAN OF THE TRANSPORT ADVISORY COMMITTEE (TAC), IT WAS ANNOUNCED TODAY (FRIDAY).

MR FORSGATE, WHO HAS SERVED THE COMMITTEE FOR SIX YEARS, JOINED AS A MEMBER IN APRIL 1980 AND BECAME THE CHAIRMAN IN OCTOBER 1982.

HE HAS GUIDED THE COMMITTEE THROUGH FOUR BUSY YEARS, DURING WHICH THE TAC HAS PLAYED A VITAL ROLE IN IMPROVING THE STANDARD OF SERVICE OF THE TWO MAJOR FRANCHISED BUS COMPANIES AND IN RATIONALISING PUBLIC TRANSPORT SERVICES TO MEET THE CHANGING NEEDS BROUGHT ABOUT BY THE ELECTRIFICATION OF THE KOWLOON-CANTON RAILWAY AND THE OPENING OF THE MASS TRANSIT ISLAND LINE.

MISS TAM IS NOT NEW TO TAC. SHE WAS A MEMBER OF THE COMMITTEE FROM APRIL 1982 TO OCTOBER 1983. APART FROM HER LEGISLATIVE COUNCIL AND EXECUTIVE COUNCIL MEMBERSHIP, SHE IS THE CONVENOR OF THE UMELCO PUBLIC UTILITIES PANEL. HER APPOINTMENT WILL STRENGTHEN THE LINK BETWEEN UMELCO AND TAC.

THE GOVERNOR HAS ALSO APPOINTED NINE NEW MEMBERS TO THE COMMITTEE. THEY ARE MR LIU LIT-FOR, MR RICHARD LAI SING-LUNG, MR TAI CHIN-WAH, MR JACKIE CHAN CHAI-KEUNG, MR LEUNG CHI-KEUNG, MR MAN SAI-CHEONG, DR STEPHEN TANG LUNG-WAI, MR VINCENT LO HONG-SUI AND MR FAN SAI-YEE.

THE NEW MEMBERS REPLACE MR STEPHEN CHEONG KAM-CHUEN, MR CHAN KAM-CHUEN, MR HU FA-KUANG, MR CHAN PAK-KEUNG, MISS ANNA WU, MR HOWARD YOUNG, MR CARL TONG, MR ALFRED TSO AND MR LIU CHING-LEUNG.

IN MAKING THE ANNOUNCEMENT, THE SECRETARY FOR TRANSPORT, MR IAN MACPHERSON, PAID TRIBUTE TO MR FORSGATE AND THE RETIRING MEMBERS.

+DURING THEIR TERM OF SERVICE, THEIR EXPERIENCE AND WISE ADVICE HAS BEEN BROUGHT TO BEAR ON A WIDE RANGE OF TRANSPORT ISSUES WHICH ARE OFTEN COMPLICATED AND DIFFICULT. THEIR VALUABLE SERVICE HAS BEEN DEEPLY APPRECIATED,+ HE SAID.

ON THE NEW APPOINTMENTS, HE SAID, +THEY REPRESENT THE INTERESTS OF A WIDE SPECTRUM OF THE COMMUNITY AND WILL, I AM SURE, BRING THEIR PROFESSIONAL KNOWLEDGE AND CONTACTS WITH MEMBERS OF THE PUBLIC TO THE WORK OF THE COMMITTEE.+

MR RICHARD LAI, A BUSINESSMAN, IS AN ELECTED MEMBER OF THE LEGISLATIVE COUNCIL AND A MEMBER OF THE TSUEN WAN DISTRICT BOARD. HE IS ALSO A MEMBER OF THE HONG KONG PRODUCTIVITY COUNCIL, THE ECONOMIC REVIEW COMMITTEE AND THE TEXTILE ADVISORY BOARD.

/MR TAI

MR TAI CHIN-WAH IS A SOLICITOR BY PROFESSION. HE IS AN ELECTED MEMBER OF THE LEGISLATIVE COUNCIL AND THE YUEN LONG DISTRICT BOARD.

MR LIU LIT-FOR, A BANKER, IS AN ELECTED MEMBER OF THE LEGISLATIVE COUNCIL. HE IS A MEMBER OF THE CENTRAL AND WESTERN DISTRICT BOARD AND THE SOCIAL SECURITY APPEAL BOARD.

MR JACKIE CHAN, A BUSINESSMAN WITH AN ENGINEERING BACKGROUND, IS AN ELECTED MEMBER OF THE LEGISLATIVE COUNCIL AND THE MONG KOK DISTRICT BOARD. HE IS A MEMBER OF THE CHINESE MANUFACTURERS' ASSOCIATION AND THE HONG KONG GENERAL CHAMBER OF COMMERCE.

MR C.K. LEUNG IS THE FIRST VICE-CHAIRMAN OF THE HONG KONG SECTION OF THE CHARTERED INSTITUTE OF TRANSPORT. HE IS A SENIOR LECTURER IN THE FACULTY OF GEOGRAPHY AT THE UNIVERSITY OF HONG KONG, SPECIALISING IN TRANSPORT STUDIES.

MR MAN SAI-CHEONG, A SOLICITOR, IS THE ELECTED URBAN COUNCILLOR REPRESENTING THE NORTH POINT CONSTITUENCY. MR MAN IS A COMMITTEE MEMBER OF THE HONG KONG AFFAIRS SOCIETY LIMITED.

DR STEPHEN TANG LUNG-WAI IS A LECTURER IN SOCIOLOGY AT THE CHINESE UNIVERSITY OF HONG KONG. HE IS THE CHAIRMAN OF THE TRAFFIC AND TRANSPORT COMMITTEE OF THE TAI PO DISTRICT BOARD.

MR FAN SAI-YEE, AN ACCOUNTANT, IS ACTIVE IN COMMUNITY AFFAIRS. HE IS A MEMBER OF THE TRANSPORT TRIBUNAL, AIR TRANSPORT LICENSING AUTHORITY, CONSUMER COUNCIL AND THE CRIMINAL AND LAW ENFORCEMENT INJURIES COMPENSATION BOARD.

MR VINCENT LO HONG-SUI IS A REAL ESTATE DEVELOPER. HE IS A MEMBER OF THE BUILDING CONTRACTORS' ASSOCIATION AND THE PROGRESSIVE HONG KONG SOCIETY.

EXISTING COMMITTEE MEMBERS RE-APPOINTED ARE DR CONRAD LAM KUI-SHING AND MR CHENG WUI-YAU.

THE COMMITTEE MEMBERSHIP WILL COMPRISE 12 UNOFFICIALS AND SIX OFFICIAL MEMBERS. THE OFFICIAL MEMBERS ARE:

- * THE SECRETARY FOR TRANSPORT (VICE-CHAIRMAN)
- * THE SECRETARY FOR DISTRICT ADMINISTRATION OR HIS REPRESENTATIVE
- * THE SECRETARY FOR ECONOMIC SERVICES OR HIS REPRESENTATIVE
- * THE COMMISSIONER OF POLICE OR HIS REPRESENTATIVE
- * THE COMMISSIONER FOR TRANSPORT
- * THE DIRECTOR OF ENGINEERING DEVELOPMENT

FRIDAY, APRIL 4, 1986

- 3 -

GOVERNOR SEES CHANGING ENVIRONMENT IN WAN CHAI

* * * * *

THE GOVERNOR, SIR EDWARD YOUDE, WAS TODAY (FRIDAY) TOLD THAT WAN CHAI IS CHANGING CONSIDERABLY AS URBAN RENEWAL PROJECTS ARE TRANSFORMING THE DISTRICT INTO A MORE EXCITING AND BUSIER PLACE THAN EVER.

THE GOVERNOR TOURED THE DISTRICT THIS AFTERNOON TO SEE VARIOUS DEVELOPMENTS AND VISIT A WELFARE ORGANISATION. HE WAS ACCOMPANIED BY THE DEPUTY REGIONAL SECRETARY FOR HONG KONG AND KOWLOON, MR BRIAN CHAU= WAN CHAI DISTRICT OFFICER, MR ROGER GARCIA= AND THE DISTRICT BOARD CHAIRMAN, MRS PEGGY LAM.

SIR EDWARD FIRST WENT TO THE ROOFTOP OF SUN HUNG KAI CENTRE WHERE HE HAD A PANORAMIC VIEW OF WAN CHAI DISTRICT, AND WAS BRIEFED BY MR GARCIA ON THE BOUNDARIES OF THE DISTRICT'S FIVE AREA COMMITTEES AND THEIR CHARACTERISTICS.

MR GARCIA TOLD SIR EDWARD THERE WAS A LACK OF OPEN SPACE IN THE DISTRICT, BUT WORK ON THE PROPOSED QUEEN'S ROAD EAST PARK AT BULLOCK LANE COULD BEGIN WHEN THE WATERWORKS DEPOT THERE WAS VACATED. THIS, HE SAID, WOULD BE AN IMPORTANT ADDITION TO MUCH-NEEDED RECREATIONAL FACILITIES FOR LOCAL RESIDENTS.

HE ALSO EXPLAINED THAT PRIVATE DEVELOPERS WERE INTERESTED IN URBAN RENEWAL PROJECTS, ESPECIALLY IN THE OLDER AREAS ALONG QUEEN'S ROAD EAST AS WELL AS THE DEVELOPMENT OF THE COMMERCIAL AND RESIDENTIAL COMPLEX ABOVE THE WAN CHAI MTR STATION.

HOWEVER, THE MOST EXCITING DEVELOPMENTS WERE PROBABLY ON THE WAN CHAI RECLAMATION WHICH WAS EVOLVING INTO A MAJOR CULTURAL, COMMERCIAL AND RESIDENTIAL AREA, SIR EDWARD WAS TOLD.

THE CHIEF PUBLIC WORKS OFFICER OF THE URBAN AREA DEVELOPMENT ORGANISATION, MR K.Y. TSANG, AND THE SENIOR ESTATE SURVEYOR OF THE DISTRICT LANDS OFFICE, MR GORDON ONGLEY, BRIEFED SIR EDWARD ON THE VARIOUS DEVELOPMENT PROJECTS NOW TAKING PLACE ON THE RECLAMATION.

AMONG THE MAJOR PROJECTS THAT HAD BEEN COMPLETED WERE THE ACADEMY FOR PERFORMING ARTS, HONG KONG ARTS CENTRE, YMCA INTERNATIONAL HOUSE AND THE URBAN COUNCIL'S SPORTS GROUND AND TRAINING POOL.

SIR EDWARD WAS TOLD THE MOST INTERESTING PROJECT UNDERWAY WAS THE HONG KONG CONVENTION AND EXHIBITION CENTRE, WHICH WOULD HOUSE OFFICES, HOTELS AND RESIDENTIAL BLOCKS. IT WOULD ALSO PROVIDE EXHIBITION HALLS AND CONFERENCE FACILITIES OF INTERNATIONAL STANDARDS.

/THE GOVERNOR

FRIDAY, APRIL 4, 1986

- 4 -

THE GOVERNOR THEN WENT TO THE ST JAMES' SETTLEMENT WHERE HE WAS GREETED BY THE SUPERVISOR-IN-CHARGE, MISS KAY LAI, AND A MEMBER OF THE SETTLEMENT'S EXECUTIVE COMMITTEE, MR JOHN BUDGE.

SIR EDWARD WAS BRIEFED ON THE VARIOUS FACILITIES AND SERVICES PROVIDED BY THE AGENCY, PARTICULARLY THOSE FOR THE MENTALLY HANDICAPPED, THE ELDERLY AND FOR FAMILY AND CHILD WELFARE.

THE PARTY THEN TOURED THE MULTI-SERVICE CENTRE FOR THE ELDERLY AND SHELTERED WORKSHOPS FOR THE MENTALLY RETARDED. THE GOVERNOR ALSO SAW A MODEL OF THE SETTLEMENT'S NEW MULTI-SERVICE COMMUNITY CENTRE AT STONE NULLAH LANE WHICH WAS SCHEDULED FOR COMPLETION LATER THIS YEAR.

SIR EDWARD THEN WENT TO JARDINE'S BAZAAR WHERE HE SAW THE RESULTS OF A RECENT ENVIRONMENTAL IMPROVEMENT PROJECT, WHICH INVOLVED A RECENT CLEARANCE OPERATION THAT SAW THE REMOVAL OF 42 ILLEGAL STRUCTURES AT THE REAR LANE.

THE GOVERNOR LEARNED THAT THIS WAS A CONTINUING EXERCISE IN THE DISTRICT CARRIED OUT BY SEVERAL GOVERNMENT DEPARTMENTS AND CO-ORDINATED BY THE DISTRICT OFFICE IN CONSULTATION WITH THE DISTRICT BOARD.

AFTER TOURING THE DISTRICT, SIR EDWARD MET WAN CHAI DISTRICT BOARD MEMBERS, THE FIVE AREA COMMITTEE CHAIRMEN AND GOVERNMENT OFFICIALS SERVING ON THE DISTRICT MANAGEMENT COMMITTEE.

- - - - 0 - - - -

SIR EDWARD PLEASD WITH ADVISORY BOARDS

* * * *

THE GOVERNOR, SIR EDWARD YOUDE, SAID TODAY (FRIDAY) HE IS EXCEEDINGLY PLEASD WITH, AND GRATEFUL FOR, THE WORK OF ADVISORY BOARDS.

SPEAKING TO REPORTERS AFTER TOURING WAN CHAI DISTRICT THIS AFTERNON, SIR EDWARD DISCOUNTED REPORTS THAT HE WAS NOT HAPPY WITH THE PERFORMANCE OF SOME ADVISORY BOARD MEMBERS.

+THE WHOLE PURPOSE OF THE LUNCHES AND THE MEETINGS WHICH I AM HAVING WITH THE ADVISORY COMMITTEES WAS EXACTLY THE OPPOSITE,+ HE SAID.

+IT WAS IN ORDER TO SAY TO THEM 'THANK YOU VERY MUCH FOR ALL THE GOOD WORK YOU ARE DOING' AND TO GIVE THEM AN OPPORTUNITY TO SAY THINGS TO ME PERSONALLY.

/+I, IN

FRIDAY, APRIL 4, 1986

- 5 -

+I, IN FACT, MEET VERY LARGE NUMBERS OF THEM FAIRLY REGULARLY JUST AS I HAVE BEEN MEETING SOME OF THE DISTRICT PEOPLE THIS AFTERNOON. I HAVE GREAT ADMIRATION FOR THEIR WORK AND I JUST WANT TO DO IT A LITTLE MORE SYSTEMATICALLY SINCE I HAVE SOME TIME NOW. SO ANY IDEA THAT I AM DISSATISFIED YOU CAN FORGET.+

WHEN ASKED ABOUT THE EXCHANGE FUND, SIR EDWARD SAID THE FINANCIAL SECRETARY WOULD MAKE A STATEMENT IN LEGISLATIVE COUNCIL ON THAT MATTER.

WHAT HAD HAPPENED THIS WEEK HAD SHOWN THAT OUR FIRST CONCERN WAS FOR THE INTEREST OF DEPOSITORS AND THE INTEREST OF HONG KONG AS A FINANCIAL CENTRE, AND ITS IMAGE AS A FINANCIAL CENTRE WAS VERY IMPORTANT, HE SAID.

+NOW THE POWERS ARE THERE FOR THE COMMISSIONER OF BANKING AND THE FINANCIAL SECRETARY TO USE, AND I THINK THEY HAVE USED THEM VERY SUCCESSFULLY.

+THE PROOF OF THE PUDDING IS IN THE EATING IN THAT YOU HAVE SEEN THIS WEEK THE SITUATION IN HONG KONG HAS BEEN VERY STABLE.+

ASKED WHETHER THE GOVERNMENT WAS SHOWING FAVOURITISM TOWARDS CERTAIN BANKS, SIR EDWARD SAID THERE HAD BEEN NO FAVOURITISM SHOWN TO ANYBODY.

+EACH CASE IS BEING DEALT WITH BY THE FINANCIAL SECRETARY AND THE COMMISSIONER OF BANKING ON THE MERITS OF THE CASE.

+AND YOU CAN BE QUITE SURE IT IS NOT FAVOURITISM WHICH IS AT ISSUE. IT IS THE INTEREST OF HONG KONG AND INTEREST OF HONG KONG'S FINANCIAL STABILITY.+

ON THE NATIONALITY BILL, SIR EDWARD SAID IT WAS STILL UNDER CONSIDERATION IN LONDON. +BUT I HOPE IT WON'T BE TOO LONG NOW BEFORE WE HEAR SOME NEWS ON THAT.+

-----0-----

FRIDAY, APRIL 4, 1986

- 6 -

PROTECTION SOUGHT FOR NAMING DISHONEST TRADERS
* * * *

THE DEFAMATION (AMENDMENT) BILL WHICH SEEKS TO PROVIDE THE DEFENCE OF QUALIFIED PRIVILEGE FOR THE NEWS MEDIA IN THEIR PUBLICATION OR BROADCAST OF REPORTS ISSUED BY THE CONSUMER COUNCIL WAS GAZETTED TODAY (FRIDAY).

+QUALIFIED PRIVILEGE IS THE LEGAL PROTECTION GIVEN TO THE MAKER OF A DEFAMATORY STATEMENT IF THE STATEMENT IS MADE HONESTLY, THAT IS WITHOUT MALICE, + A GOVERNMENT SPOKESMAN EXPLAINED.

IF THIS PROVISION GOES THROUGH ITS LEGISLATIVE PROCESS, THE NEWS MEDIA WILL BE ABLE TO PUBLICISE CONSUMER COUNCIL REPORTS OF UNSCRUPULOUS OR DISHONEST TRADERS, INCLUDING THE NAMES OF THOSE INVOLVED, WITHOUT FEAR OF LIBEL ACTION BEING TAKEN AGAINST THEM.

THE SPOKESMAN POINTED OUT THAT AT PRESENT, MANY NEWSPAPERS PUBLISHERS AND BROADCASTERS WERE UNWILLING TO PUBLISH THE NAMES OF THE RETAILERS' SHOPS WHICH HAD BEEN FOUND TO BE DISHONEST BY THE CONSUMER COUNCIL.

+THE UNFORTUNATE RESULT IS THAT THE MASS MEDIA ON OCCASIONS PUBLICISE THE MALPRACTICES OF THE RETAILERS' SHOP BUT NOT THE NAMES OF THE SHOPS CONCERNED, DEFEATING LARGELY THE PURPOSE OF THE COUNCIL'S ACTION.

+THIS PROVISION WOULD ENCOURAGE THE PRESS TO REPORT THE INVESTIGATION RESULTS OF THE CONSUMER COUNCIL WHICH WOULD HELP CONSUMERS TO MAKE THEIR PURCHASING DECISIONS ACCORDINGLY, + THE SPOKESMAN ADDED.

THE BILL ALSO SEEKS TO PREVENT DEFAMATION STATEMENTS MADE BY CANDIDATES IN ELECTIONS TO THE LEGISLATIVE COUNCIL AND DISTRICT BOARDS BEING AFFORDED THE DEFENCE OF QUALIFIED PRIVILEGE.

THIS BRINGS INTO LINE THE LAW RELATING TO ALL PUBLIC AND CIVIC ELECTIONS HELD IN HONG KONG SINCE THE PROVISION ALREADY APPLIES TO URBAN AND REGIONAL COUNCILS ELECTIONS.

THE BILL WILL BE INTRODUCED INTO THE LEGISLATIVE COUNCIL FOR FIRST READING ON APRIL 16.

VIEWS ON PROVISIONS OF THE BILL CAN BE SENT TO THE SECRETARY FOR TRADE AND INDUSTRY, GOVERNMENT SECRETARIAT, SIXTH FLOOR, CENTRAL GOVERNMENT OFFICES, LOWER ALBERT ROAD, OR TO UMEICO AT 8 JACKSON ROAD, CENTRAL.

- - - - 0 - - - -

/7

FRIDAY, APRIL 4, 1986

- 7 -

NEW LEGISLATION ON MARINE FEES AND CHARGES
* * * * *

THE GOVERNMENT ANNOUNCED TODAY THAT NEW LEGISLATION WILL BE SOUGHT IN RESPECT OF MARINE FEES AND CHARGES.

EXPLAINING THE BACKGROUND, A GOVERNMENT SPOKESMAN SAID THAT THESE FEES AND CHARGES, OF WHICH THERE ARE ABOUT 1 000, WERE INCREASED IN JUNE LAST YEAR WITH A VIEW TO RECOVERING A HIGHER PROPORTION OF THE COSTS INCURRED BY THE GOVERNMENT IN THE OPERATION AND ADMINISTRATION OF HONG KONG'S PORT AND SHIPPING. THE COSTS ARISE FROM SERVICES SUCH AS THE PROVISION OF ANCHORAGES, MOORINGS AND PUBLIC CARGO WORKING AREAS, HARBOUR CLEANSING AND NAVIGATIONAL AIDS.

THE INCREASES INCLUDED FEES FOR THE KEEPING OF PRIVATE MOORINGS AND FOR PLEASURE VESSEL LICENCES. FOR EXAMPLE, THE FEE FOR A PRIVATE MOORING CAPABLE OF TAKING A 11 METRE YACHT AT THE CAUSEWAY BAY TYPHOON SHELTER WAS INCREASED TO \$500 PER MONTH. THE LEVEL OF THE INCREASED FEE WAS COMPARABLE TO PREVAILING MARKET RATES FOR COMMERCIAL MOORINGS.

SUBSEQUENTLY, HOWEVER, THE LEGAL MEANS BY WHICH THE NEW FEES FOR PRIVATE MOORINGS AND PLEASURE VESSEL LICENCES WERE INTRODUCED WERE QUESTIONED. ACCORDINGLY, IN ORDER TO CLARIFY THE LEGAL BASIS FOR ALL MARINE FEES AND CHARGES, THE GOVERNMENT WILL BE INTRODUCING INTO THE LEGISLATIVE COUNCIL A NEW SHIPPING AND PORT CONTROL (FEES) BILL 1986, WHICH WILL BE GAZETTED ON APRIL 11. THIS BILL SEEKS TO PROVIDE A FIRM AND UNEQUIVOCAL LEGAL BASIS FOR THE SETTING OF MARINE FEES AND CHARGES. IF THE BILL IS PASSED INTO LAW, THE GOVERNMENT INTENDS TO INTRODUCE SUBSIDIARY LEGISLATION THEREAFTER TO SET NEW FEES FOR PLEASURE VESSEL LICENCES, AND FOR MOORINGS HAVING REGARD TO COMMERCIAL MOORING CHARGES. THESE ARE EXPECTED TO BE SUBSTANTIALLY THE SAME AS THOSE INTRODUCED IN JUNE LAST YEAR.

IN THE MEANTIME, HAVING CONSIDERED THE LEGAL ISSUES INVOLVED, THE GOVERNMENT HAS DECIDED, WITH EFFECT FROM MAY 1, 1986, TO REVERT THE CURRENT SCALE OF PRIVATE MOORINGS AND PLEASURE VESSEL LICENCE FEES TO THAT WHICH EXISTED IMMEDIATELY PRIOR TO JUNE 1, 1985. SUBJECT TO THE APPROVAL OF THE FINANCE COMMITTEE OF THE LEGISLATIVE COUNCIL ARRANGEMENTS WILL BE MADE TO REIMBURSE THOSE WHO HAVE PAID THE HIGHER LEVEL OF FEES DURING THE PERIOD JUNE 1, 1985 ONWARDS.

- - - - 0 - - - -

/8

FRIDAY, APRIL 4, 1986

- 8 -

JANUARY RETAIL SALES SURVEY RESULTS OUT

THE VALUE OF TOTAL RETAIL SALES IN JANUARY 1986, ESTIMATED AT \$6 165 MILLION, WAS 5 PER CENT HIGHER THAN IN JANUARY 1985, WHILE THEIR VOLUME WAS 2 PER CENT HIGHER, ACCORDING TO THE PROVISIONAL SURVEY RESULTS RELEASED TODAY (FRIDAY) BY THE CENSUS AND STATISTICS DEPARTMENT.

COMPARED WITH JANUARY 1985, RETAIL SALES OF CLOTHING, FOOTWEAR AND ALLIED PRODUCTS INCREASED BY 13 PER CENT IN VALUE AND 9 PER CENT IN VOLUME. FOODSTUFFS, ALCOHOLIC DRINKS AND TOBACCO ROSE BY 6 PER CENT IN SALES VALUE AND 5 PER CENT IN SALES VOLUME.

RETAIL SALES OF CONSUMER DURABLES WENT UP BY 6 PER CENT IN VALUE AND 3 PER CENT IN VOLUME. FUELS REGISTERED INCREASES OF 2 PER CENT IN SALES VALUE AND 1 PER CENT IN SALES VOLUME. OTHER CONSUMER GOODS SHOWED AN INCREASE OF 1 PER CENT IN SALES VALUE BUT A DECREASE OF 2 PER CENT IN SALES VOLUME.

ANALYSED BY SELECTED TRADES, RETAIL SALES OF SUPERMARKETS AND MOTOR VEHICLES ROSE MODERATELY IN BOTH VALUE AND VOLUME TERMS. DEPARTMENT STORES HAD A SLIGHT INCREASE IN BOTH SALES VALUE AND VOLUME, AND CONSUMER DURABLES OTHER THAN MOTOR VEHICLES HAD A SLIGHT INCREASE IN SALES VALUE BUT NO CHANGE IN SALES VOLUME.

COMPARING THE THREE-MONTH PERIOD NOVEMBER 1985-JANUARY 1986 WITH THE SAME PERIOD A YEAR AGO, TOTAL RETAIL SALES INCREASED BY 5 PER CENT IN VALUE AND 2 PER CENT IN VOLUME. RETAIL SALES OF CLOTHING, FOOTWEAR AND ALLIED PRODUCTS ROSE BY 15 PER CENT IN VALUE AND 9 PER CENT IN VOLUME. CONSUMER DURABLES WENT UP BY 6 PER CENT IN SALES VALUE AND 4 PER CENT IN SALES VOLUME. FOODSTUFFS, ALCOHOLIC DRINKS AND TOBACCO RECORDED INCREASES OF 4 PER CENT IN SALES VALUE AND 3 PER CENT IN SALES VOLUME.

RETAIL SALES OF FUELS ROSE BY 2 PER CENT IN VALUE AND 1 PER CENT IN VOLUME. +OTHER CONSUMER GOODS+ SHOWED AN INCREASE OF 2 PER CENT IN SALES VALUE BUT NO CHANGE IN SALES VOLUME. RETAIL SALES OF SUPERMARKETS AND MOTOR VEHICLES INCREASED MODERATELY IN BOTH VALUE AND VOLUME TERMS. DEPARTMENT STORES AND CONSUMER DURABLES OTHER THAN MOTOR VEHICLES HAD SLIGHT INCREASES IN BOTH SALES VALUE AND VOLUME.

/WHEN COMPARED

WHEN COMPARED WITH DECEMBER 1985, AND BEARING IN MIND THAT THIS COMPARISON IS AFFECTED BY SEASONAL FACTORS, TOTAL RETAIL SALES FOR JANUARY 1986 DECREASED BY 5 PER CENT IN BOTH VALUE AND VOLUME TERMS. RETAIL SALES OF CONSUMER DURABLES RECORDED INCREASES OF 7 PER CENT IN VALUE AND 5 PER CENT IN VOLUME, AND THOSE OF FOODSTUFFS, ALCOHOLIC DRINKS AND TOBACCO SHOWED INCREASES OF 3 PER CENT IN VALUE AND 4 PER CENT IN VOLUME. HOWEVER, FUELS RECORDED DECREASES OF 1 PER CENT IN BOTH SALES VALUE AND VOLUME.

RETAIL SALES OF CLOTHING, FOOTWEAR AND ALLIED PRODUCTS DROPPED BY 7 PER CENT IN VALUE AND 4 PER CENT IN VOLUME. +OTHER CONSUMER GOODS+ SHOWED DECREASES OF 13 PER CENT IN BOTH SALES VALUE AND VOLUME.

RETAIL SALES OF MOTOR VEHICLES ROSE SUBSTANTIALLY AND THOSE OF CONSUMER DURABLES OTHER THAN MOTOR VEHICLES INCREASED SLIGHTLY IN BOTH SALES VALUE AND VOLUME. ON THE OTHER HAND, SUPERMARKETS HAD SLIGHT DECREASES AND DEPARTMENT STORES HAD MODERATE DECREASES IN BOTH SALES VALUE AND VOLUME.

TABLE 1 PRESENTS THE REVISED TOTAL SALES FIGURE FOR DECEMBER 1985 AND THE PROVISIONAL FIGURE FOR JANUARY 1986.

TABLE 2 SHOWS THE VALUE AND VOLUME INDEXES OF RETAIL SALES BY MAJOR TRADE GROUPS AND SELECTED TRADES (WHICH FORM PART OF THE RELEVANT MAJOR TRADE GROUPS), WITH AVERAGE MONTHLY RETAIL SALES IN 1980 TAKEN AS 100.

COMPARISONS OF JANUARY 1986 RESULTS WITH THOSE OF DECEMBER AND JANUARY 1985 AND COMPARISONS OF TOTAL RETAIL SALES IN THE THREE-MONTH PERIOD NOVEMBER 1985-JANUARY 1986 WITH THOSE IN THE SAME PERIOD A YEAR AGO ARE ALSO GIVEN. GRAPHS 1 AND 2 DEPICT THE INDEX MOVEMENTS OF TOTAL RETAIL SALES FROM JANUARY 1983 TO DECEMBER 1985.

THE REPORT CONTAINING THE ANALYSIS OF THE JANUARY 1986 SURVEY RESULTS IS ON SALE AT THE GOVERNMENT PUBLICATION SALES CENTRE, GENERAL POST OFFICE BUILDING, CONNAUGHT PLACE, AT \$1 PER COPY.

ENQUIRES ABOUT THE SURVEY RESULTS MAY BE DIRECTED TO THE WHOLESALE AND RETAIL TRADE STATISTICS SECTION OF THE CENSUS AND STATISTICS DEPARTMENT (TEL. NO. : 3-7216024).

TABLE 1 : TOTAL RETAIL SALES

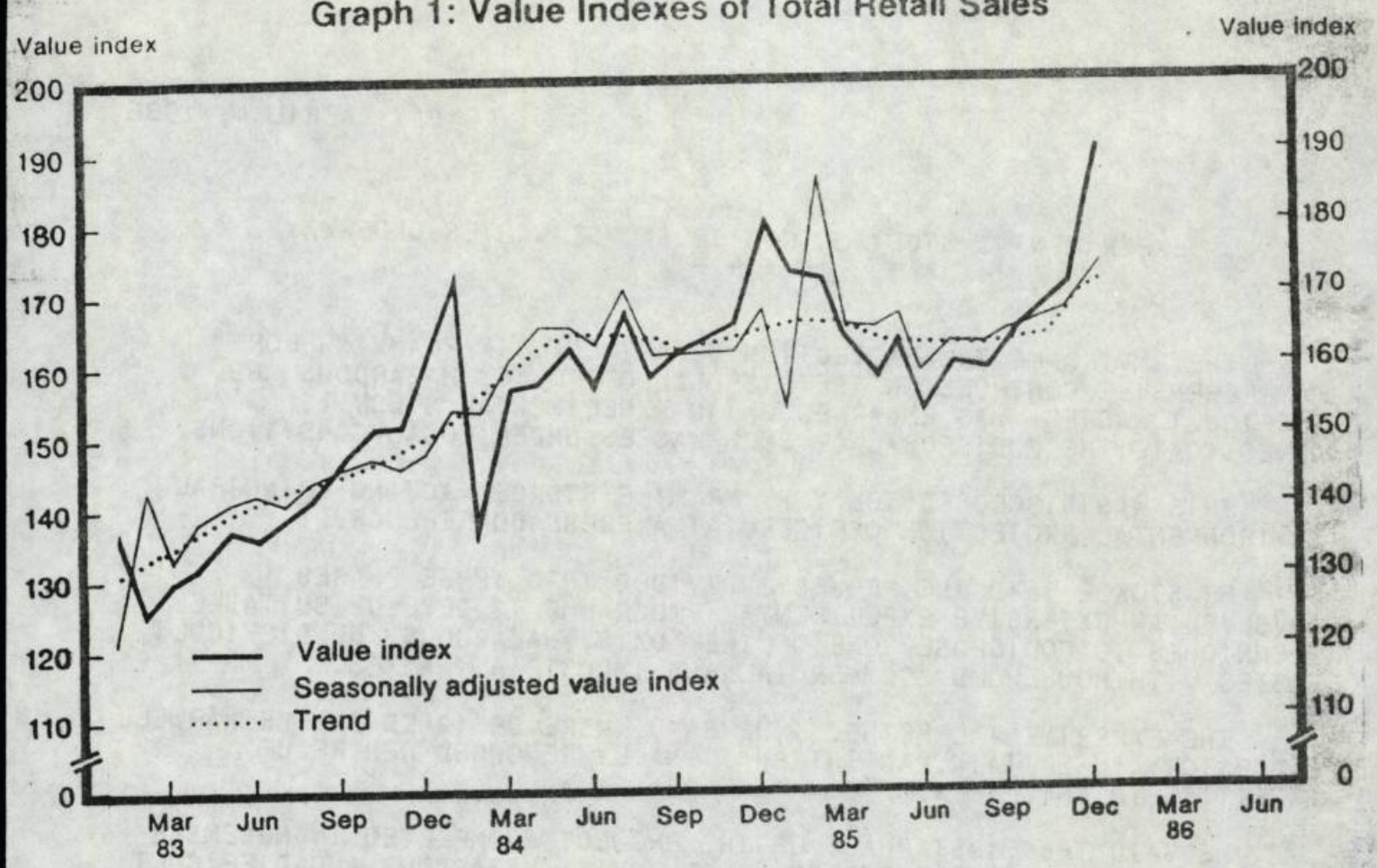
Total Retail Sales for January 1986 (Provisional Figure) = HK\$6 165 million
 for December 1985 (Revised Figure) = HK\$6 473 million

TABLE 2 : VALUE AND VOLUME INDEXES OF RETAIL SALES
 FOR DECEMBER 1985 AND JANUARY 1986
 (Monthly average of 1980 = 100)

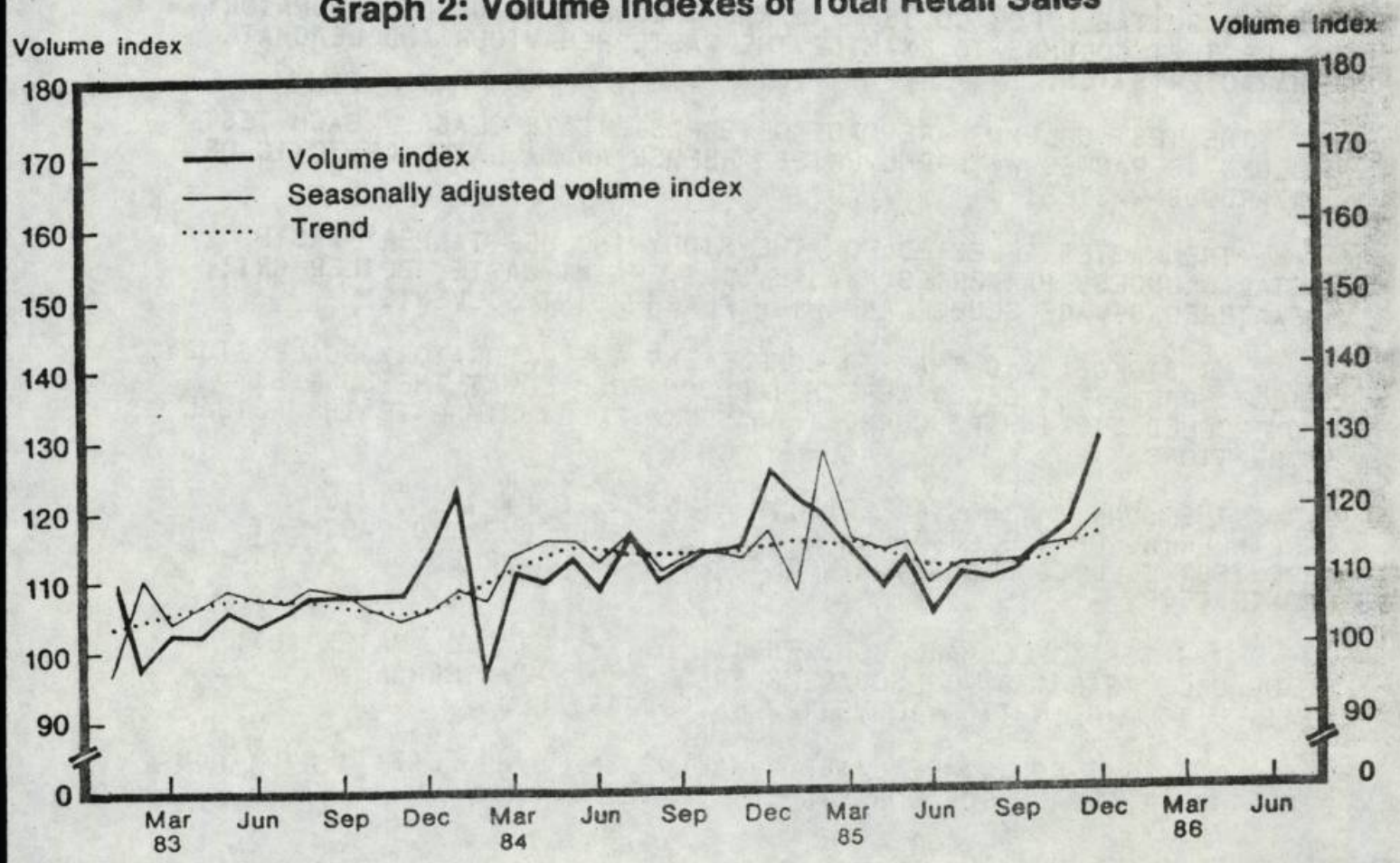
Item	Index of Retail Sales	December 1985	January 1986	January 1986 compared with December 1985		January 1986 compared with January 1985		Nov. 1985 - Jan. 1986 compared with Nov. 1984 - Jan. 1985	
		(Revised figures)	(Provisional figures)	Points	%	Points	%	Points	%
(A) FOR ALL RETAIL TRADES									
	Value	191	181	- 9	- 5	+ 8	+ 5	+ 8	+ 5
	Volume	130	124	- 6	- 5	+ 2	+ 2	+ 3	+ 2
(B) BY MAJOR TRADE GROUPS									
Foodstuffs, alcoholic drinks and tobacco	Value	179	184	+ 5	+ 3	+ 11	+ 6	+ 7	+ 4
	Volume	117	121	+ 4	+ 4	+ 6	+ 5	+ 4	+ 3
Fuels	Value	193	192	- 1	- 1	+ 3	+ 2	+ 3	+ 2
	Volume	125	124	- 1	- 1	+ 2	+ 1	+ 1	+ 1
Clothing, footwear and allied products	Value	289	268	- 21	- 7	+ 31	+ 13	+ 34	+ 15
	Volume	171	164	- 7	- 4	+ 13	+ 9	+ 13	+ 9
Consumer durables	Value	158	170	+ 11	+ 7	+ 10	+ 6	+ 9	+ 6
	Volume	115	121	+ 6	+ 5	+ 3	+ 3	+ 4	+ 4
Other consumer goods	Value	194	169	- 25	- 13	+ 2	+ 1	+ 4	+ 2
	Volume	136	119	- 18	- 13	- 2	- 2	*	*
(C) BY SELECTED TRADES									
Supermarkets	Value	349	333	- 16	- 5	+ 66	+ 25	+ 51	+ 19
	Volume	210	200	- 10	- 5	+ 35	+ 21	+ 26	+ 15
Motor vehicles	Value	86	112	+ 26	+ 30	+ 19	+ 20	+ 12	+ 14
	Volume	49	62	+ 13	+ 27	+ 7	+ 13	+ 4	+ 9
Consumer durables other than motor vehicles	Value	208	209	+ 1	+ 1	+ 4	+ 2	+ 8	+ 4
	Volume	160	161	+ 1	+ 1	*	*	+ 4	+ 3
Department stores	Value	246	212	- 34	- 14	+ 10	+ 5	+ 12	+ 6
	Volume	174	149	- 24	- 14	+ 3	+ 2	+ 6	+ 4

- Notes : 1. "Foodstuffs, alcoholic drinks and tobacco" includes "supermarkets".
 2. "Consumer durables" includes "motor vehicles".
 3. "Other consumer goods" includes "department stores".
 4. Figures denoting changes are derived from the unrounded index figures.
 5. * denotes no change.

Graph 1: Value Indexes of Total Retail Sales



Graph 2: Volume Indexes of Total Retail Sales



Notes: (1) Monthly average of 1980 = 100.
 (2) The seasonally adjusted value and volume indexes and Henderson trends are compiled using the X-11 variant seasonal adjustment program of the U.S. Bureau of the Census.

FRIDAY, APRIL 4, 1986

- 12 -

EXPERIMENTAL STUDY ON CODISPOSAL OF WASTES UNDERWAY
* * * * *

THE ENVIRONMENTAL PROTECTION DEPARTMENT, IN PLANNING FOR COMPREHENSIVE CONTROLS ON THE DISPOSAL OF TOXIC, HAZARDOUS AND DIFFICULT WASTES, HAS EMBARKED ON AN EXPERIMENTAL STUDY TO INVESTIGATE THE CODISPOSAL OF SUCH WASTES UNDER LOCAL CONDITIONS.

THIS WAS DISCLOSED TODAY BY MR MIKE STOKOE, ACTING PRINCIPAL ENVIRONMENTAL PROTECTION OFFICER, AT A PRESS CONFERENCE.

MR STOKOE SAID THE PROJECT, DIVIDED INTO THREE PHASES, INVOLVED AN EXTENSIVE EXPERIMENTAL PROGRAMME TO DEVELOP SUITABLE TECHNIQUES TO CODISPOSE SOME OF THE TOXIC, HAZARDOUS AND DIFFICULT WASTES WITH HOUSEHOLD, COMMERCIAL AND INDUSTRIAL WASTES.

THE EXPERIMENTAL METHODS, HE SAID, WERE DESIGNED BY THE HARWELL LABORATORY IN BRITAIN, AN INTERNATIONALLY RENOWNED CENTRE OF EXPERTISE IN THIS AREA.

HE SAID THE FIRST PHASE OF THE PROJECT, COMPLETED IN NOVEMBER LAST YEAR, INVOLVED THE SCREENING OF TOXIC, HAZARDOUS AND DIFFICULT WASTES SUITABLE FOR CODISPOSAL AND THE SETTING UP OF LABORATORY SCALE TEST COLUMNS TO EXAMINE THE WASTE BEHAVIOUR AND LEACHATE CHARACTERISTICS.

THE TEST COLUMNS ARE MADE OF BOROSILICATE GLASS. EACH TEST COLUMN IS PACKED WITH PULVERISED REFUSE AND A LAYER OF TOXIC OR HAZARDOUS WASTES.

THE WASTES SELECTED FOR THE STUDY INCLUDE TANNERY WASTE, METAL SLUDGES, BATTERIES, WASTE OILS, PAINT WASTE, BOILER GRIT, DEWATERED SEWAGE SLUDGE AND HIGH FLASH-POINT SOLVENTS.

MR STOKOE SAID THAT TO COMPLEMENT THE LABORATORY SCALE STUDY, PILOT SCALE TEST CELLS WERE BEING CONSTRUCTED AT THE JUNK BAY CONTROLLED TIP IN THE CURRENT PHASE TO FULLY SIMULATE THE ACTUAL CONDITIONS.

THE JUNK BAY CONTROLLED TIP IS MANAGED BY THE CIVIL ENGINEERING OFFICE OF THE ENGINEERING DEVELOPMENT DEPARTMENT, AND THE TEST CELL CONSTRUCTION WORKS ARE BEING CARRIED OUT BY ITS CONTRACTOR.

THE TEST CELLS ARE CONSTRUCTED WITH SOFT FILL MATERIALS. EACH CELL MEASURES 400 SQUARE METRES IN AREA INTERNALLY AND IS RAISED TO A HEIGHT OF 10 METRES IN FIVE STAGES.

THE TEST CELLS ARE LINED WITH A 2.5MM HIGH-DENSITY POLYTHENE SHEET AT THE BASE FOR CONTAINMENT OF THE LEACHATE.

FOUR PERFORATED DRAINS ARE LAID ON TOP OF THE LINER IN EACH CELL FOR COLLECTING AND CARRYING THE LEACHATES TO THE MONITORING AREA.

THE TEST CELLS WILL BE FILLED WITH REFUSE AND COMPACTED IN THE NORMAL WAY OF TIPPING.

ONE OF THE CELLS IS DESIGNATED AS THE CONTROL, WHILE THE OTHER THREE CELLS WILL EXPERIMENT WITH SELECTED TOXIC, HAZARDOUS AND DIFFICULT WASTES.

THESE INCLUDE TANNERY WASTE, WASTE OILS, METAL SLUDGES, DEWATERED SEWAGE SLUDGES, PAINT WASTE AND HIGH FLASH-POINT SOLVENTS.

MR STOKOE SAID THE BEHAVIOUR OF THE TEST COLUMNS AND TEST CELLS WOULD BE MONITORED OVER A PERIOD OF ONE AND A HALF YEARS TO TWO YEARS.

THE DATA OBTAINED FROM THE EXPERIMENTAL PROGRAMME WOULD THEN BE USED FOR REFERENCE IN DRAWING UP SUITABLE GUIDELINES IN CARRYING OUT CODISPOSAL OPERATIONS IN HONG KONG.

IN ADDITION, HE SAID, CONSULTANTS WOULD ALSO MAKE RECOMMENDATIONS ON OPERATING PROCEDURES AND MONITORING PROGRAMMES FOR FUTURE CODISPOSAL SITES, AND THEY WOULD BE CONTAINED IN THE WASTE MANAGEMENT REVIEW REPORT WHICH WAS DUE TO BE PRESENTED TO THE GOVERNMENT IN THE NEXT TWO MONTHS.

- - - - - 0 - - - - -

BY-ELECTIONS FOR TWO DISTRICTS NEXT MONTH
* * * * *

BY-ELECTIONS WILL BE HELD NEXT MONTH TO ELECT TWO MEMBERS TO THE CENTRAL - WESTERN AND MONG KOK DISTRICT BOARDS FOLLOWING VACANCIES RESULTING FROM THE URBAN COUNCIL ELECTIONS.

NOTICES PUBLISHED IN THE GAZETTE TODAY (FRIDAY) STATE THAT THERE IS ONE VACANCY EACH IN THE CHUNG WAN CONSTITUENCY OF CENTRAL AND WESTERN DISTRICT, AND THE TAI KOK TSUI CONSTITUENCY IN MONG KOK.

A SPOKESMAN FOR THE CITY AND NEW TERRITORIES ADMINISTRATION SAID UNDER THE ELECTORAL PROVISIONS ORDINANCE ANY MEMBER ELECTED TO THE URBAN COUNCIL MUST VACATE HIS SEAT ON THE DISTRICT BOARD.

NOMINATION OF CANDIDATES FOR THE TWO CONSTITUENCIES WILL BEGIN ON APRIL 18 AND CLOSE ON MAY 2, HE SAID.

/+IF THERE

FRIDAY, APRIL 4, 1986

- 14 -

+IF THERE ARE TWO OR MORE NOMINATIONS FOR EACH OF THE CONSTITUENCIES, BY-ELECTIONS WILL BE HELD ON MAY 22,+ HE ADDED.

+ANY REGISTERED VOTER WHO HAS LIVED IN HONG KONG FOR TEN YEARS OR MORE IS ELIGIBLE TO BE NOMINATED AND STAND FOR ELECTION,+ HE SAID.

+THE CANDIDATE NEED NOT LIVE IN THE CONSTITUENCY OR DISTRICT IN WHICH HE IS STANDING FOR ELECTION,+ THE SPOKESMAN SAID.

NOMINATION FORMS WILL BE AVAILABLE FROM APRIL 14 AT ALL DISTRICT OFFICES AND THE REGISTRATION AND ELECTORAL DIVISION, HARBOUR CENTRE, 10TH FLOOR, 25 HARBOUR ROAD, WAN CHAI.

THERE ARE 8 463 REGISTERED ELECTORS IN THE CHUNG WAN CONSTITUENCY AND 18 113 IN THE TAI KOK TSUI CONSTITUENCY.

- - - - 0 - - - -

BILL SEEKS UPDATE OF TREATMENT CENTRE LAW
* * * * *

A BILL WHICH SEEKS TO UPDATE THE LAW RELATING TO THE ADDICTION TREATMENT CENTRES RUN BY THE SOCIETY FOR THE AID AND REHABILITATION OF DRUG ABUSERS (SARDA) WAS GAZETTED TODAY (FRIDAY).

THE DRUG ADDICTS TREATMENT AND REHABILITATION (AMENDMENT) BILL 1986 AIMS TO AMEND THE DEFINITION OF A +YOUNG PERSON+= ARRANGEMENTS FOR VISITS TO ADDICTION TREATMENT CENTRES= THE EX-OFFICIO MEMBERSHIP OF THE ADDICTION TREATMENT CENTRE APPEAL BOARD AND TO ADJUST THE VARIOUS MONETARY PENALTIES FOR OFFENCES UNDER THE ORDINANCE AND THE REGULATIONS MADE UNDER IT.

UNDER THE PRESENT LAW, THE CONSENT OF A PARENT OR GUARDIAN OF A YOUNG ADDICT AGED BELOW 19 IS REQUIRED BEFORE HE OR SHE CAN BE ADMITTED TO ONE OF THE TWO TREATMENT CENTRES RUN BY SARDA.

THE NEW BILL SEEKS TO LOWER THE AGE REQUIREMENT TO 18 SO THAT PERSONS AGED 18 MAY BE ADMITTED WITHOUT THE NEED FOR PARENTAL CONSENT.

IT ALSO PROPOSES TO PROVIDE FOR VISITS BY JUSTICES OF THE PEACE TO THE TWO TREATMENT CENTRES AT LEAST ONCE EVERY THREE MONTHS.

IN ADDITION, THE BILL PROPOSES THAT THE SECRETARY FOR SECURITY, WHO IS RESPONSIBLE FOR POLICIES RELATING TO NARCOTICS, SHOULD TAKE THE PLACE OF THE FORMER SECRETARY FOR HOME AFFAIRS AS A MEMBER OF THE ADDICTION TREATMENT CENTRE APPEAL BOARD SINCE THE POST OF THE SECRETARY FOR HOME AFFAIRS CEASED TO EXIST AFTER THE RESTRUCTURING OF THE GOVERNMENT SECRETARIAT IN APRIL 1985.

/THE BILL

THE BILL ALSO CALLS FOR THE REVISION OF THE MONETARY PENALTIES IN THE DRUG ADDICTS TREATMENT AND REHABILITATION ORDINANCE.

THE PENALTIES HAVE NOT BEEN REVISED SINCE THE ENACTMENT OF THE ORDINANCE IN 1960.

THE BILL WILL BE INTRODUCED TO THE LEGISLATIVE COUNCIL FOR FIRST READING ON APRIL 16.

- - - - - 0 - - - - -

BETTER FACILITIES FOR TRAINING OF NURSES
* * * * *

TO COPE WITH THE INCREASED DEMAND FOR NURSING STAFF THE GOVERNMENT IS TO BUILD A NURSES' TRAINING SCHOOL AT KOWLOON HOSPITAL AND AN EXTENSION TO THE PSYCHIATRIC NURSES' TRAINING SCHOOL AT CASTLE PEAK HOSPITAL.

TENDERS ARE BEING CALLED FOR THE TWO PROJECTS, WORK ON WHICH IS EXPECTED TO START IN JUNE.

THE KOWLOON CONTRACT WILL CONSIST OF A SIX-STOREY BUILDING HOUSING A PUPIL NURSING AUXILIARY TRAINING SCHOOL ON THE GROUND FLOOR, A KITCHEN, DINING ROOM AND COMMUNAL FACILITIES ON THE FIRST FLOOR AND NURSES' QUARTERS ON THE SECOND TO FIFTH FLOORS. THERE WILL ALSO BE CAR PARKING AND ANCILLARY ACCOMMODATION.

IT IS EXPECTED THAT THE PROJECT WILL BE COMPLETED BY DECEMBER 1987.

FOR THE CASTLE PEAK PROJECT, \$2 MILLION HAS BEEN DONATED BY THE ROYAL HONG KONG JOCKEY CLUB.

THE EXTENSION CONSISTS OF A THREE-STOREY TRAINING SCHOOL COMPRISING LECTURE THEATRES, DEMONSTRATION ROOMS, CLASSROOMS, LIBRARY OFFICES AND SERVICE ROOMS.

IT IS EXPECTED TO BE COMPLETED BY FEBRUARY 1987.

- - - - - 0 - - - - -

FRIDAY, APRIL 4, 1986

- 16 -

NEW I.D. CARD FOR WOMEN BORN 1931 - 1934
* * * * *

THE IMMIGRATION DEPARTMENT ANNOUNCED TODAY (FRIDAY) THAT WOMEN BORN 1931, 1932, 1933 AND 1934 WILL BE REQUIRED TO APPLY FOR NEW I.D. CARDS FROM APRIL 14 TO MAY 17.

THEY SHOULD BRING ALONG THEIR OLD I.D. CARDS AND CALL AT ANY ONE OF THE EIGHT NEW I.D. CARD ISSUE OFFICES DURING THE FIVE-WEEK PERIOD.

THE EIGHT OFFICES ARE OPEN DAILY FROM 8 AM TO 9.30 PM, EXCEPT SUNDAYS AND PUBLIC HOLIDAYS.

THEIR ADDRESSES ARE:

- HONG KONG : BASEMENT, 151 GLOUCESTER ROAD, WAN CHAI.
- EAST KOWLOON : AMOY GARDEN PLAZA, SECOND FLOOR, 77 NGAU TAU KOK ROAD.
- WEST KOWLOON : CANTON ROAD GOVERNMENT OFFICES, SECOND FLOOR, 393 CANTON ROAD, TSIM SHA TSUI.
- TSUEN WAN : EAST ASIA COMMERCIAL CENTRE, GROUND FLOOR, 29-37 TSUEN FU STREET.
- SHA TIN : SHA TIN CENTRE, PODIUM FLOOR, 2-16 WANG POK STREET.
- YUEN LONG : HOP YICK CENTRE, SECOND FLOOR, 31 HOP YICK ROAD.
- TUEN MUN : CHI LOK COMMERCIAL CENTRE, GROUND FLOOR, CHI LOK FA YUEN.
- SHEUNG SHUI : TSUEN WO TAI LAU, GROUND FLOOR, 82-84 SAN FUNG AVENUE, SHEK WU HUI.

A SPOKESMAN FOR THE IMMIGRATION DEPARTMENT SAID THAT GREEN SEAL I.D. CARDS HOLDERS MUST FOLLOW THE SAME APPLICATION SCHEDULE AND WILL NOT BE TREATED SEPARATELY.

+THOSE WHO WANT TO ALTER THEIR LAST NAMES WHEN THEY APPLY FOR NEW CARDS AS A RESULT OF A CHANGE IN MARITAL STATUS SHOULD BRING ALONG RELEVANT DOCUMENTS SUCH AS MARRIAGE OR DIVORCE CERTIFICATES TO SUPPORT THEIR CASES,+ HE SAID.

HE ALSO POINTED OUT THAT THE ISSUE CENTRES ARE FOR THE APPLICATION OF NEW I.D. CARDS ONLY. THOSE WHO WISH TO HAVE THEIR DAMAGED CARDS REPLACED OR THEIR PERSONAL DATA CHANGED SHOULD GO TO THE REGULAR REGISTRATION OF PERSONS OFFICES INSTEAD.

THE SPOKESMAN ALSO REMINDED WOMEN BORN IN 1935, 1936, 1937 AND 1938 WHO HAVE NOT APPLIED FOR THEIR NEW I.D. CARDS TO DO SO WITHOUT FURTHER DELAY AS THERE ARE ONLY FIVE MORE DAYS LEFT BEFORE THE CURRENT PHASE CLOSES ON APRIL 12.

FRIDAY, APRIL 4, 1986

- 17 -

REGISTRATION TAX BENEFIT FOR DISABLED DRIVERS

DISABLED DRIVERS WILL BE ABLE TO ENJOY EXEMPTION FROM THE FIRST REGISTRATION TAX ON VEHICLES IF THEY CAN PROVE THAT THE VALUE OF THEIR PRIVATE CAR, ON THE DAY OF PURCHASE, IS BELOW \$30 000, THE SENIOR EXECUTIVE OFFICER (LICENSING) OF THE TRANSPORT DEPARTMENT, MR WARREN CHENG, SAID TODAY (FRIDAY).

MR CHENG WAS RESPONDING TO REPORTS THAT FLUCTUATIONS IN THE EXCHANGE RATE OF THE HONG KONG DOLLAR IN RECENT MONTHS HAD PUSHED UP THE TAXABLE VALUE OF SOME IMPORTED PRIVATE CARS TO OVER \$30 000.

AT PRESENT, THE FIRST REGISTRATION TAX OF A PRIVATE CAR RANGES FROM 70 TO 90 PER CENT OF ITS COST, INSURANCE AND FREIGHT VALUE. A DISABLED PERSON MAY CLAIM EXEMPTION FROM THE TAX IF THE CIF VALUE OF HIS PRIVATE CAR DOES NOT EXCEED \$30 000 AND IF HE HAS NOT MADE A SIMILAR CLAIM IN THE PREVIOUS FIVE YEARS.

+IF THERE IS CLEARLY A CASE SHOWING THAT SINCE THE SIGNING OF A PURCHASE AGREEMENT BY A DISABLED PERSON, FLUCTUATIONS IN EXCHANGE RATES HAVE BOOSTED THE VALUE OF A PRIVATE CAR INTENDED FOR FIRST REGISTRATION FROM BELOW \$30 000 TO ABOVE \$30 000, THE DEPARTMENT WILL CONSIDER ACCEPTING THE VALUE OF THE VEHICLE AS ON THE DAY WHEN THE PURCHASE AGREEMENT WAS SIGNED,+ MR CHENG SAID.

+IN SUCH CIRCUMSTANCES, A DISABLED CAR OWNER SHOULD BRING ALONG THE VEHICLE PURCHASE AGREEMENT WITH HIM TOGETHER WITH OTHER DOCUMENTS WHEN HE REGISTERS HIS PRIVATE CAR WITH THE DEPARTMENT AND CLAIMS TAX EXEMPTION,+ HE CONTINUED.

MR CHENG ADDED THAT THE DEPARTMENT'S RECORDS SHOWED THAT THE VALUE OF MANY POPULAR MODELS OF PRIVATE CARS DID NOT EXCEED \$30 000. MOREOVER, MANY OF THESE MODELS REMAINED UNAFFECTED BY FLUCTUATIONS IN THE EXCHANGE RATES BECAUSE VALUES WERE DECLARED IN HONG KONG DOLLARS.

IN FACT, POTENTIAL DISABLED CAR OWNERS SHOULD ASK MOTOR DEALERS TO RECOMMEND MODELS WHICH WOULD SURELY QUALIFY THE BUYERS FOR TAX EXEMPTION, HE SUGGESTED.

FURTHER ENQUIRIES ON EXEMPTION FROM THE FIRST REGISTRATION TAX MAY BE MADE TO THE HONG KONG LICENSING OFFICE ON 5-259494.

- - - - - 0 - - - - -

/18

FRIDAY, APRIL 4, 1936

- 18 -

BOOKLET ABOUT ISLANDS DISTRICT PRODUCED
* * * *

A COMPREHENSIVE BOOKLET ON THE ISLANDS DISTRICT, COMPLETE WITH COLOURFUL PICTURES AND ESSENTIAL INFORMATION, HAS BEEN PUBLISHED TO PROMOTE THE DISTRICT AMONG LOCAL RESIDENTS AND VISITORS.

THE 54-PAGE BOOKLET CONTAINS MORE THAN 60 ILLUSTRATIONS THAT DEPICT THE MANY SCENIC AREAS OF THE DISTRICT AND PROVIDE READERS WITH INFORMATIVE BACKGROUND ON PAST AND CURRENT DEVELOPMENTS.

ENTITLED '+PANORAMA OF ISLANDS DISTRICT+', THE BOOKLET IS IN CHINESE AND WILL BE DISTRIBUTED FREE ON WRITTEN REQUEST.

THE PUBLICATION TRACES THE VARIOUS CHANGES OF THE SPRAWLING ISLANDS OF THE DISTRICT.

STUDENTS SHOULD FIND IT A HANDY CIVIC-EDUCATION AID AS THE BOOKLET GIVES AN ACCOUNT OF THE RELATIONSHIP BETWEEN LOCAL ORGANISATIONS, THE DISTRICT BOARD AND THE GOVERNMENT, ALL AIMING TO MAKE THE DISTRICT A BETTER PLACE TO LIVE IN AS WELL AS A MAJOR TOURIST AREA.

THE BOOKLET PROVIDES VISITORS WITH IMPORTANT INFORMATION SUCH AS THE HISTORICAL BACKGROUND OF NUMEROUS SCENIC SPOTS AND FERRY SCHEDULES TO THE ISLANDS.

WITH LIMITED COPIES PRODUCED, ONLY ONE COPY OF THE BOOKLET WILL BE GIVEN TO EACH ORGANISATION ON A FIRST-COME-FIRST-SERVED BASIS.

LETTERS SHOULD BE ADDRESSED TO THE ISLANDS DISTRICT BOARD AT HARBOUR BUILDING, 20TH FLOOR, 38 PIER ROAD, CENTRAL.

----- 0 -----

SPECIAL STAMP BOOKLET TO MARK BANK OPENING
* * * * *

A SPECIAL COMMEMORATIVE STAMP BOOKLET ON THE NEW HONGKONG BANK HEADQUARTERS WILL BE ISSUED BY THE POST OFFICE ON MONDAY (APRIL 7) TO MARK ITS OFFICIAL OPENING.

THE BOOKLET, THE FIRST OF ITS KIND TO BE ISSUED IN HONG KONG, PRESENTS THE NEW HONGKONG BANK HEADQUARTERS BUILDING WITH COLOUR PHOTOGRAPHS AND DETAILED DESCRIPTIONS.

/+IT ALSO

FRIDAY, APRIL 4, 1986

- 19 -

+IT ALSO CONTAINS 10 \$1.70 STAMPS FEATURING THE BANK BUILDING ALONG WITH 24 DEFINITIVE 50 CENTS STAMPS,+ A POST OFFICE SPOKESMAN SAID.

THE BOOKLET, ISSUED IN CO-OPERATION WITH THE BANK, WILL BE SOLD FOR \$29, THE FACE VALUE OF THE STAMPS IT CONTAINS. IT WILL BE AVAILABLE FROM THE GENERAL POST OFFICE, BEACONSFIELD HOUSE AND PEAK POST OFFICES ON THE ISLAND AND TSIM SHA TSUI, AIRPORT AND GRANVILLE ROAD POST OFFICES IN KOWLOON.

-----0-----
RE-APPOINTMENT TO MTRC BOARD
* * * *

THE GOVERNOR HAS RE-APPOINTED MR C.H. TUNG AS A MEMBER OF THE BOARD OF THE MASS TRANSIT RAILWAY CORPORATION FOR A PERIOD OF ONE YEAR FROM MAY 1, 1986.

MR TUNG HAS BEEN SERVING ON THE BOARD SINCE MAY 1, 1984.

THE OTHER MEMBERS OF THE BOARD, WHICH IS CHAIRED BY MR WILFRID NEWTON, ARE MR OSWALD CHEUNG, MR G.M. MACWHINNIE, MR YEUNG PO-KWAN, MR P.J. WRANGHAM, MR D.A.C. NENDICK (SECRETARY FOR MONETARY AFFAIRS), THE SECRETARY FOR LANDS AND WORKS, THE SECRETARY FOR TRANSPORT AND THE MANAGING DIRECTOR OF THE CORPORATION.

-----0-----
KWUN TONG FORUM ON HAWKER POLICIES
* * * *

A PUBLIC FORUM ON HAWKER POLICIES WILL BE HELD IN KWUN TONG ON SUNDAY (APRIL 6) AFTERNOON AND RESIDENTS ARE INVITED TO ATTEND AND EXPRESS THEIR VIEWS ON THE ISSUE.

STARTING AT 2 PM AT WELLINGTON COLLEGE IN TELFORD GARDENS, THE +HAWKER POLICIES PUBLIC FORUM+ HAS BEEN ORGANISED BY AN AD HOC WORKING GROUP SET UP BY THE KWUN TONG DISTRICT BOARD TO CO-ORDINATE DISTRICT CONSULTATION ON THE URBAN COUNCIL'S +CONSULTATIVE DOCUMENT ON HAWKER AND MARKET POLICIES+.

THE CHAIRMAN OF THE WORKING GROUP, MR PANG KAM-FAI, SAID: +THE WORKING GROUP HAS INVITED LOCAL MUTUAL AID COMMITTEES, OWNERS' CORPORATIONS, HAWKER ASSOCIATIONS, AND TRADE ORGANISATIONS TO ATTEND THE FORUM, WHILE DISTRICT BOARD MEMBERS WILL HEAD GROUP DISCUSSIONS.+

/THE CHAIRMAN

FRIDAY, APRIL 4, 1986

- 20 -

THE CHAIRMAN OF THE WORKING PARTY OF THE URBAN COUNCIL MARKETS AND STREET TRADERS SELECT COMMITTEE, MRS ELSIE TU, AND A WORKING PARTY MEMBER, MR LEE CHIK-YUET, WILL ATTEND THE FORUM TO BRIEF PARTICIPANTS ON THE CONSULTATIVE DOCUMENT, MR PANG SAID.

BESIDES HOLDING THE FORUM, THE WORKING GROUP IS INVITING WRITTEN COMMENTS FROM VARIOUS LOCAL BODIES, AND AN OVERALL REPORT WILL BE SUBMITTED TO THE DISTRICT BOARD IN JUNE.

- - - - 0 - - - -

TREE PLANTING SCHEME PROVING POPULAR
* * * * *

THE COMMUNITY TREE PLANTING SCHEME ORGANISED BY THE AGRICULTURE AND FISHERIES DEPARTMENT IS PROVING POPULAR WITH BOTH THE YOUNG AND THE OLD.

THE SCHEME BEGAN ON WEDNESDAY AND ALREADY MORE THAN 4 400 PEOPLE, INCLUDING SOME 200 OLD PEOPLE, HAVE PARTICIPATED IN PLANTING 5 000 TREES IN COUNTRY PARK PLANTATION AREAS RECENTLY DEVASTATED BY FIRE.

A DEPARTMENT SPOKESMAN TODAY (FRIDAY) URGED THE PUBLIC TO TAKE PART IN THE SCHEME ON CHING MING FESTIVAL DAY AND EVERY SUNDAY IN APRIL.

+THEY CAN NOT ONLY HELP RESTOCK OUR PLANTATION BUT ALSO BECOME PERSONALLY INVOLVED IN MEANINGFUL ACTIVITIES TO MAKE HONG KONG'S COUNTRYSIDE A NICER AND GREENER PLACE,+ HE SAID.

THE SPOKESMAN SAID THAT DEPARTMENT STAFF WOULD BE ON DUTY FROM 9 AM TO 4 PM DAILY ON THE ABOVE DAYS AT SIX DESIGNATED SITES TO PROVIDE TREE SEEDLINGS FOR PLANTING BY THE PUBLIC.

THE SITES ARE NEAR THE TWISH MANAGEMENT CENTRE IN TAI LAM COUNTRY PARK; CHUEN LUNG IN TAI MO SHAN COUNTRY PARK; PAK TAM CHUNG IN SAI KUNG COUNTRY PARK; MUI WO NEAR THE FERRY PIER; POK FU LAM COUNTRY PARK NEAR CHI FU FA YUEN; AND AT A PICNIC SITE NEAR MOUNT BUTLER, INSIDE QUARRY BAY COUNTRY PARK.

- - - - 0 - - - -

FRIDAY, APRIL 4, 1986

- 21 -

FIRST ANNUAL CONCERT BY YOUTH SYMPHONY ORCHESTRA
* * * * *

THE HONG KONG YOUTH SYMPHONY ORCHESTRA, WHICH WAS REORGANISED LAST SEPTEMBER, WILL PRESENT ITS FIRST ANNUAL CONCERT ON SUNDAY (APRIL 6), AT THE CITY HALL CONCERT HALL. THE PROGRAMME WILL START AT 8 PM, WITH MR JOHN SZI-CHENG LAU AS GUEST CONDUCTOR.

THE ORCHESTRA, MANAGED BY THE MUSIC OFFICE OF THE MUNICIPAL SERVICES BRANCH, AIMS AT DEVELOPING THE MUSICAL TALENT OF YOUNG PEOPLE AND IT TODAY (FRIDAY) RECEIVED SPONSORSHIP FROM A COMMERCIAL FIRM IN ORDER TO HELP IT TO FURTHER ITS AIMS.

THE SPONSORSHIP FROM THE DHL WORLDWIDE EXPRESS COMES IN THE FORM OF CARDIGANS AND SOUVENIR HANDBOOKS FOR ORCHESTRA MEMBERS, WHICH WERE HANDED OVER IN A SHORT CEREMONY BY THE COMPANY'S GENERAL MANAGER, MR TOBY TSE, TO THE ORCHESTRA'S CONCERT MASTER, MR MA WAI-KWAN.

THE MUSIC ADMINISTRATOR, MRS DORIS HO, WAS PRESENT AT THE CEREMONY HELD IN THE HENRY G. LEONG COMMUNITY CENTRE IN YAU MA TEI.

THE PROGRAMME FOR SUNDAY'S CONCERT INCLUDES BRAHM'S TRAGIC OVERTURE, OP. 18, BEETHOVEN'S SYMPHONY NO. 4 AND GOUNOD'S FAUST BALLET MUSIC.

THE CONCERT WILL CONCLUDE WITH TCHAIKOWSKY'S 1812 OVERTURE, OP. 49, PERFORMED JOINTLY BY THE ORCHESTRA AND THE STOWMARKET SCHOOLS' CONCERT BAND OF ENGLAND WHICH IS CURRENTLY IN HONG KONG ON A CULTURAL EXCHANGE VISIT ORGANISED BY THE MUSIC OFFICE.

TICKETS AT \$5 EACH ARE AVAILABLE AT ALL COMPUTERISED BOX-OFFICES OF THE URBAN COUNCIL. FOR ENQUIRIES, PLEASE TELEPHONE 3-731777.

- - - - 0 - - - -

KWAI CHUNG, TSING YI FUNDS FOR YOUTH PROGRAMME
* * * * *

LOCAL ORGANISATIONS, VOLUNTARY AGENCIES, MUTUAL AID COMMITTEES OF KWAI CHUNG AND TSING YI DISTRICT ARE INVITED TO APPLY FOR FUNDS TO ORGANISE ACTIVITIES FOR THE 1986 SUMMER YOUTH PROGRAMME.

A KWAI CHUNG AND TSING YI DISTRICT SUMMER YOUTH PROGRAMME CO-ORDINATING COMMITTEE HAS BEEN SET UP TO OVERSEE THE ENTIRE PROGRAMME, THE ESTIMATED EXPENDITURE OF WHICH IS \$495 000.

/THIS YEAR'S

FRIDAY, APRIL 4, 1986

- 22 -

THIS YEAR'S THEME IS +CARE FOR YOUR COMMUNITY, GET TO KNOW IT BETTER+.

A COMMITTEE SPOKESMAN SAID THE PROGRAMME WAS A COMMUNITY EXERCISE AIMED AT PROVIDING YOUNG PEOPLE WITH OPPORTUNITIES TO ENRICH THEMSELVES DURING THE SUMMER THROUGH PARTICIPATION IN MEANINGFUL SOCIAL, RECREATIONAL AND COMMUNITY ACTIVITIES.

+THEY CAN DEVELOP THEIR POTENTIAL SKILLS AND UNDERSTAND AND APPRECIATE INTER-HUMAN RELATIONSHIP. THEY CAN ALSO GET TO KNOW THE COMMUNITY IN WHICH THEY LIVE SO AS TO ENHANCE THEIR SENSE OF RESPONSIBILITY TO IT,+ HE SAID.

FOR THIS YEAR, MORE THAN 500 EVENTS HAVE BEEN PLANNED FOR THE DISTRICT IN JULY AND AUGUST.

APPLICATION FORMS FOR FUNDS MAY BE OBTAINED FROM THE KWAI CHUNG AND TSING YI DISTRICT OFFICE AND ITS SUB-OFFICES. DEADLINE IS APRIL 18.

- - - - 0 - - - -

IMPROVED FACILITIES FOR CHILDREN AT PARK
* * * * *

THE PLAYGROUND AND BOATING POND AT VICTORIA PARK WILL BE IMPROVED TO PROVIDE MORE FACILITIES FOR CHILDREN.

THE CHILDREN'S PLAYGROUND IN THE NORTHEASTERN AREA OF THE PARK WILL BE RECONSTRUCTED AND PROVIDED WITH MODERN PLAY EQUIPMENT AND SAFETY MATTING.

THERE ARE ALSO PLANS TO ENLARGE THE MODEL BOATING POOL IN THE PARK AND PROVIDE SPECTATOR AREAS AROUND THE POOL.

WORK ON THE PROJECT IS EXPECTED TO START NEXT MONTH AND BE COMPLETED IN DECEMBER. THE BUILDING DEVELOPMENT DEPARTMENT IS INVITING TENDERS FOR THE WORK.

- - - - 0 - - - -

FRIDAY, APRIL 4, 1986

- 23 -

TRAFFIC ARRANGEMENTS FOR HONG KONG ISLAND

* * * * *

THE TRANSPORT DEPARTMENT ANNOUNCED THAT THE FOLLOWING TRAFFIC ARRANGEMENTS WILL BE IMPLEMENTED IN CENTRAL AND WAN CHAI:

* THE EXISTING BUS-ONLY LANE RESTRICTION ON THE WESTBOUND CARRIAGEWAY OF DES VOEUX ROAD CENTRAL BETWEEN ITS JUNCTION WITH QUEEN'S ROAD CENTRAL AND ICE HOUSE STREET WILL BE LIFTED BETWEEN 7 PM AND 10 PM ON MONDAY (APRIL 7) FOR THE OPENING CEREMONY OF A NEARBY BANK.

* TO FACILITATE ROAD WORKS, THE EXISTING PEAK-HOUR (7 AM TO 10 AM AND 4 PM TO 7 PM) URBAN CLEARWAY RESTRICTION ON THE WESTBOUND CARRIAGEWAY OF WAN CHAI ROAD BETWEEN HOUSE NO. 207 AND ITS JUNCTION WITH TAK YAN STREET WILL BE EXTENDED TO OPERATE 24 HOURS DAILY FROM 10 AM ON MONDAY. THE MEASURE WILL LAST FOR ABOUT NINE DAYS AND NO VEHICLE OTHER THAN FRANCHISED BUSES WILL BE ALLOWED TO STOP FOR PASSENGERS OR GOODS WITHIN THE URBAN CLEARWAY.

* TO FACILITATE THE LAYING OF DUCT NETWORK FOR THE AREA TRAFFIC CONTROL SYSTEM, FROM 10 AM ON MONDAY, THE SECTION OF WAN CHAI ROAD BETWEEN TAK YAN STREET AND TIN LOK LANE WILL BE RE-ROUTED ONE-WAY EASTBOUND, WHILE VEHICLES WILL NOT BE ALLOWED TO TURN LEFT FROM MORRISON HILL ROAD ON TO WAN CHAI ROAD. THE MEASURES WILL AGAIN BE IN EFFECT FOR ABOUT NINE DAYS.

IN ADDITION, FROM 10 AM ON MONDAY, THE UNNAMED ROAD CONNECTING CHUN FAI ROAD AND MOORSOM ROAD IN JARDINE'S LOOKOUT WILL BE OPEN TO TRAFFIC.

- - - - 0 - - - -

TRAFFIC AND TRANSPORT CHANGES

* * * * *

THE TUEN MUN TOWN CENTRE BUS STATION IN AREA 11 WILL COME INTO OPERATION ON MONDAY (APRIL 7) AND TWO NEW KMB NEW TERRITORIES EXPRESS ROUTES 60X AND 61X WILL BE INTRODUCED TO OPERATE FROM IT TO JORDAN ROAD FERRY AND KOWLOON CITY FERRY.

KMB ROUTES 52 AND 60M OPERATING FROM TUEN MUN FERRY TO CHEUNG SHA WAN AND TSUEN WAN MTR STATION WILL BE RELOCATED TO TERMINATE AT THE BUS STATION.

/KMB ROUTE

FRIDAY, APRIL 4, 1986

- 24 -

KMB ROUTE 61 FROM TAI HING TO YUEN LONG EAST WILL BE DIVERTED TO OPERATE BETWEEN TUEN MUN TOWN CENTRE AND YUEN LONG WEST.

TO TIE IN WITH THE OPERATION OF THE BUS STATION, KMB ROUTES 66 AND 66M ON JOURNEYS TO TAI KOK TSUI FERRY AND TSUEN WAN MTR STATION WILL BE DIVERTED TO PUI TO ROAD, TUEN MUN HEUNG SZE WUI ROAD, ROAD D8 AND TUEN MUN ROAD. KMB ROUTES 59, 59B, 59S, 62, 63, 66 AND 66M WILL USE THE BUS LAYBY ON THE SOUTHBOUND CARRIAGEWAY OF TUEN MUN HEUNG SZE WUI ROAD OUTSIDE THE BUS STATION.

FROM 10 AM ON MONDAY, THE FOLLOWING TRAFFIC ARRANGEMENTS WILL BE IMPLEMENTED IN SHEUNG SHUI TO FACILITATE ROAD CONSTRUCTION WORKS AT JOCKEY CLUB ROAD AND SAN FUNG AVENUE:

* ROAD D4 BETWEEN JOCKEY CLUB ROAD AND ROAD L6 WILL BE OPENED TO TRAFFIC- AND

* KMB ROUTES 69, 70, 70K, 73, 73K AND 79K OPERATING ALONG SAN FUNG AVENUE WILL BE DIVERTED TO ROAD D4 AND ROAD L6.

THESE MEASURES WILL BE IMPLEMENTED FOR ABOUT FOUR MONTHS.

WITH EFFECT FROM THE SAME TIME, KAM TSIN ROAD IN SHEUNG SHUI WILL BE CLOSED TO VEHICLES EXCEEDING 5.5 TONNES FOR ABOUT TWO MONTHS TO FACILITATE THE LAYING OF GAS PIPES.

IN KWUN TONG, THE EASTBOUND CARRIAGEWAY OF KAI SHING STREET BETWEEN CARGO CIRCUIT AND THE UNNAMED ROAD LINKING KAI SHING STREET AND WANG KWONG ROAD WILL BE MADE A PUBLIC LIGHT BUS PROHIBITED ZONE FROM 10 AM ON MONDAY. NO PLBS WILL BE ALLOWED TO ENTER THE AREA.

- - - - 0 - - - -