



DAILY INFORMATION BULLETIN

ISSUED BY GOVERNMENT INFORMATION SERVICES
BEACONSFIELD HOUSE, HONG KONG. TEL: 5-233191

TUESDAY, MARCH 10, 1987

<u>CONTENTS</u>	<u>PAGE NO.</u>
LACK OF CONFIDENCE CLAIM NOT PROVED	1
IMPORTANT TO HAVE DEBATE ON BILL	3
LEGCO MEMBERS HAVE BUSY SCHEDULE	4
FUNDS SOUGHT FOR PURCHASE OF CUSTOMS COMPUTER SYSTEM	4
RETAIL SALES SURVEY RESULTS FOR DECEMBER RELEASED	5
DEVELOPMENT POTENTIAL IN NORTH DISTRICT HIGHLIGHTED	10
\$5 MILLION RAISED FOR HOSPITAL EXTENSION	11
ANTI-RABIES DRIVE TO BE STEPPED UP	12
MORE FACTORY INSPECTIONS FOR SAFETY EXERCISE	13
NEED TO PRESERVE TRADITION OF RESPECTING ELDERLY	14
MORE TIME TO APPLY FOR TAXI VOUCHERS	15
PROCEDURE FOR CLAIMS AGAINST AUSTRAVEL	16
CENTRAL ALLOCATION OF PRIMARY ONE PLACES	17
DANCE CONTEST WINNERS SHOW THEIR WINNING STYLE	18
NEW PREMISES, NEW NAME	18
ILLEGAL ROOFTOP STRUCTURES TO BE DEMOLISHED	19
CUSTOM-MADE PLAY EQUIPMENT FOR NEW OPEN SPACE	19
MID-SPAN BRIDGING CEREMONY	20
AUCTION OF SPECIAL CAR NUMBERS	20
APPLICATIONS TO SPONSOR FIREWORKS DISPLAY	21
WORLD ENVIRONMENT DAY ON COMMITTEE'S AGENDA	21
TEMPORARY CLOSURE OF TUNNEL EXIT ROAD	22
SHORTER OPERATING HOURS FOR PARKING METERS	22
PLB PROHIBITED ZONE IN YUEN LONG	22

TUESDAY, MARCH 10, 1987

- 1 -

LACK OF CONFIDENCE CLAIM NOT PROVED
* * * * *

A CLAIM THAT HONG KONG HAS A PERSISTENT PATTERN OF DISQUIET REFLECTED IN THE HESITANT PACE OF INVESTMENT AND IN SUSTAINED CAPITAL OUTFLOWS IS NOT PROVED BY FACTS, THE DIRECTOR OF INDUSTRY, MR K.Y. YEUNG, SAID TODAY (TUESDAY).

SPEAKING AT A LUNCHEON MEETING OF THE ROTARY CLUB OF HONG KONG NORTHWEST, MR YEUNG SAID THERE WERE TWO AREAS THAT HAD RECENTLY BEEN IDENTIFIED BY SOME OBSERVERS AS INDICATING A LACK OF CONFIDENCE IN THE FUTURE OF HONG KONG'S ECONOMY.

THESE WERE CAPITAL OUTFLOWS FROM HONG KONG AND INVESTMENT IN HONG KONG, HE POINTED OUT.

+ON THE FIRST POINT IT SEEMS TO ME THAT WHAT IS MORE IMPORTANT THAN THE EXISTENCE OF A NET OUTFLOW OF FUNDS ON THE CAPITAL ACCOUNT IS THE UNDERLYING MOTIVATION.

+WHILST THERE MUST HAVE BEEN SOME ADJUSTMENT IN INVESTMENT PORTFOLIOS OF HONG KONG RESIDENTS INTO OVERSEAS ASSETS AS A FORM OF INSURANCE AGAINST UNCERTAINTY ABOUT THE FUTURE, THERE IS EVIDENCE THAT MUCH OF THE OUTFLOW HAS BEEN MOTIVATED BY PURELY COMMERCIAL OR FINANCIAL CONSIDERATIONS.

+IN THE MONEY MARKET, FOR EXAMPLE, DESPITE THE ABSENCE OF EXCHANGE RISKS PROVIDED BY THE LINK BETWEEN THE HONG KONG DOLLAR AND THE U.S. DOLLAR, FOR ABOUT TWO YEARS THE INTEREST RETURN AVAILABLE ON HONG KONG DOLLARS HAS BEEN CONSISTENTLY BELOW THAT FOR U.S. DOLLARS, PROVIDING INVESTORS WITH AN INCENTIVE TO SHIFT INTO U.S. DOLLARS THAT HAS NOTHING TO DO WITH LACK OF CONFIDENCE.

+INDEED, OVER THE PAST FEW YEARS NET LENDING TO BANKS OVERSEAS BY BANKS IN HONG KONG HAS BEEN CONSISTENTLY ON THE INCREASE.+

MR YEUNG SAID THERE WERE OTHER INDICATIONS THAT HONG KONG'S CAPITAL OUTFLOWS WERE NOT PRIMARILY MOTIVATED BY LACK OF CONFIDENCE.

+FOR EXAMPLE, IT HAS BEEN REPORTED SEVERAL TIMES IN THE PRESS THAT HONG KONG ACCOUNTS FOR THE LARGEST SHARE OF FOREIGN INVESTMENT IN THE PEOPLE'S REPUBLIC OF CHINA OVER THE PAST SEVEN YEARS.

+FOR THE COUNTRY AS A WHOLE, HONG KONG IS SAID TO HAVE ACCOUNTED FOR OVER 60 PER CENT OF THE TOTAL VALUE OF FOREIGN INVESTMENT. FOR SOUTH CHINA INCLUDING THE SPECIAL ECONOMIC ZONES, HONG KONG'S SHARE IS SAID TO HAVE BEEN IN EXCESS OF 80 PER CENT.

+THE QUESTION THAT ARISES IS WHETHER THIS CAPITAL OUTFLOW CAN BE INDUCED BY LACK OF CONFIDENCE.

/+CLEARLY,

- 2 -

+CLEARLY, EVEN IF ONE WERE SEEKING TO BUY INSURANCE, ONE WOULD DEAL ONLY WITH A COMPANY ONE TRUSTS.+

AS REGARDS THE TREND OF CAPITAL INVESTMENT IN HONG KONG, MR YEUNG SAID DURING THE NEGOTIATIONS ON THE FUTURE OF HONG KONG THERE WAS, NOT SURPRISINGLY, A WAIT-AND-SEE ATTITUDE.

+HOWEVER, IN 1984, ON THE BACK OF RAPID GROWTH IN DOMESTIC EXPORTS IN 1983 AND 1984 PRIVATE INVESTMENT IN PLANT AND MACHINERY INCREASED BY 22 PER CENT TO AN ALL-TIME HIGH.

+WHILE INVESTMENT IN THIS AREA FELL SLIGHTLY IN 1985, TRADE STATISTICS PUBLISHED BY THE GOVERNMENT SHOW CLEARLY A VERY STRONG RECOVERY IN RETAINED IMPORTS OF ALL TYPES OF CAPITAL GOODS IN THE SECOND HALF OF 1986.

+STATISTICS OVER A LONGER PERIOD SHOW THAT, IN THE CASE OF MANUFACTURING, THERE IS A MARKED CORRELATION BETWEEN THE GROWTH RATE IN REAL TERMS OF RETAINED IMPORTS OF INDUSTRIAL MACHINERY FOR USE IN THE MANUFACTURING SECTOR AND THE GROWTH RATE OF DOMESTIC EXPORTS:

GROWTH RATE (%) IN REAL TERMS

	RETAINED IMPORTS OF INDUSTRIAL MACHINERY FOR USE IN MANUFACTURING	DOMESTIC EXPORTS
	<hr style="width: 100%;"/>	<hr style="width: 100%;"/>
1982	-26	-3
1983	19	14
1984	27	17
1985	-4	-5
1986	26 (ESTIMATE)	16

+THUS IT IS DIFFICULT TO RECONCILE THE FACT THAT OVER A LONG PERIOD INVESTORS - PARTICULARLY THOSE IN MANUFACTURING - HAVE BEEN WILLING TO INVEST IN PLANT AND MACHINERY FOR USE IN HONG KONG WITH THE VIEW THAT CAPITAL IS BEING MOVED OUT OF HONG KONG BECAUSE OF A LACK OF CONFIDENCE IN OUR ECONOMIC FUTURE.

+AND IT WOULD SEEM REASONABLE TO INFER FROM THE EVIDENCE THAT EVEN IF SOME OF THE OUTFLOWS WERE ASSOCIATED WITH AN ELEMENT OF UNCERTAINTY THIS IS NOT PREVENTING SIGNIFICANT PRIVATELY FINANCED INVESTMENT IN LONG-TERM PHYSICAL ASSETS BEING UNDERTAKEN IN HONG KONG.

/+FINALLY,

+FINALLY, A SERIOUS LACK OF CONFIDENCE IN THE FUTURE OF HONG KONG'S ECONOMY WOULD BE QUITE INCONSISTENT WITH THE TREND OF INWARD INVESTMENT IN RECENT YEARS.

+STATISTICAL DATA ON THE MANUFACTURING SECTOR IN RESPECT OF PROJECTS FACILITATED BY THE INDUSTRY DEPARTMENT SHOW A SHARPLY RISING TREND:

VALUE OF INWARD INVESTMENT

(\$ MILLION AT CURRENT PRICES)

1983	12
1984	40
1985	286
1986	500

+MOREOVER THE QUALITY OF THAT INVESTMENT HAS BEEN IMPROVING OVER THE YEARS, AS EVIDENCED BY THE INCREASING USE OF COMPUTER-CONTROLLED MACHINES, THE INCREASING APPLICATION OF QUALITY CONTROL, THE INCREASING WILLINGNESS TO CARRY OUT PRODUCT DESIGN LOCALLY AND AN INCREASING NUMBER OF JOINT VENTURES, WHICH IS INDICATIVE AT LEAST OF A WILLINGNESS TO SHARE NEW PRODUCT AND PROCESS TECHNOLOGIES WITH LOCAL MANUFACTURERS.

+THESE ARE ENCOURAGING SIGNS OF GROWING CONFIDENCE IN HONG KONG ON THE PART OF OVERSEAS MANUFACTURING INVESTORS,+ HE SAID.

- - - - 0 - - - -

IMPORTANT TO HAVE DEBATE ON BILL
* * * * *

THE ACTING GOVERNOR, SIR DAVID AKERS-JONES, SAID TODAY (TUESDAY) THAT IT WAS VERY IMPORTANT TO HAVE THE LEGISLATIVE COUNCIL DEBATE ON THE PUBLIC ORDER (AMENDMENT) BILL.

SIR DAVID WAS SPEAKING TO REPORTERS AFTER AN EXECUTIVE COUNCIL MEETING.

ASKED ABOUT HIS REACTION TO COMMENTS EXPRESSED ON THE BILL, SIR DAVID SAID THAT WE HAD TO WAIT NOW UNTIL WE HAD THE DEBATE IN THE LEGISLATIVE COUNCIL TOMORROW.

+THE PUBLIC ORDER BILL IS NOW BEFORE THE LEGISLATIVE COUNCIL AND IT WOULD BE QUITE WRONG OF ME AS PRESIDENT TO COMMENT ANY FURTHER AT THIS STAGE,+ HE SAID.

- - - - 0 - - - -

TUESDAY, MARCH 10, 1987

- 4 -

LEGCO MEMBERS HAVE BUSY SCHEDULE
* * * * *

NINETEEN MEMBERS WILL SPEAK ON THE ADJOURNMENT DEBATE ON THE CONSULTATION DOCUMENT ON THE REDRESS OF GRIEVANCES IN THE LEGISLATIVE COUNCIL TOMORROW (WEDNESDAY).

THE SIR EDWARD YOUDE MEMORIAL FUND BILL 1987 WILL BE INTRODUCED FOR THREE READINGS WHILE THE PARTITION (AMENDMENT) BILL 1987 WILL BE INTRODUCED FOR FIRST AND SECOND READINGS.

FOUR BILLS - THE CONTROL OF PUBLICATIONS CONSOLIDATION (AMENDMENT) BILL 1986, THE PUBLIC ORDER (AMENDMENT) BILL 1986, THE ADOPTION (AMENDMENT) BILL 1987 AND THE HONG KONG EXAMINATIONS AUTHORITY (AMENDMENT) BILL 1987 ARE DUE FOR COMMITTEE STAGE AND THIRD READING.

IN ADDITION, THE FINANCIAL SECRETARY WILL MAKE TWO MOTIONS ON THE EXCHANGE FUND ORDINANCE AND THE PUBLIC FINANCE ORDINANCE.

IN ADDITION, TEN QUESTIONS WILL BE ASKED BY MEMBERS.

- - - - 0 - - - -

FUNDS SOUGHT FOR PURCHASE OF CUSTOMS COMPUTER SYSTEM
* * * * *

THE FINANCE COMMITTEE WILL BE ASKED TOMORROW (WEDNESDAY) TO APPROVE A COMMITMENT OF \$9 585 000 FOR THE PURCHASE AND INSTALLATION OF A COMPUTER SYSTEM FOR THE CUSTOMS AND EXCISE DEPARTMENT AND TO ACCEPT ITS FINANCIAL IMPLICATIONS.

THE PROPOSED SYSTEM WILL CENTRALISE CUSTOMS INTELLIGENCE AND INFORMATION RECORD TO FACILITATE RESEARCH AND INVESTIGATION.

IT WILL ENHANCE THE DISSEMINATION AND EXCHANGE OF CUSTOMS INTELLIGENCE AND INFORMATION, AND PREVENT DUPLICATION AMONG DIFFERENT OFFICES IN COLLECTING AND MAINTAINING SUCH INFORMATION.

THE NEW SYSTEM CAN ALSO IMPROVE EXAMINATION PROCESS OF AIR AND SEA CARGO, MONITORING OF THE MOVEMENT OF DUTIABLE COMMODITIES, AND THE ASSESSMENT AND COLLECTION OF DUTIES.

THE COMMITTEE WILL ALSO BE ASKED TO APPROVE A NUMBER OF OTHER PROVISIONS INCLUDING:

- * THE FINANCIAL IMPLICATIONS OF THE PROPOSAL TO RAISE THE LIMITS OF FEES PAYABLE, UNDER THE LEGAL AID SCHEME, TO PRIVATE LEGAL PRACTITIONERS WHO UNDERTAKE LITIGATION WORK IN RESPECT OF CRIMINAL CASES ON BEHALF OF THE LEGAL AID DEPARTMENT ;

- * \$3 503 000 FOR HIRE OF SERVICES AND PROFESSIONAL FEES BY THE CIVIL AVIATION DEPARTMENT;
- * \$5 000 000 FOR THE EXPANSION AND REPLACEMENT OF PUBLIC ADDRESS, INTER-COMMUNICATION AND BROADCASTING SYSTEMS AND THE INSTALLATION OF A CLOSED CIRCUIT TELEVISION SYSTEM FOR BAGGAGE HANDLING AT HONG KONG INTERNATIONAL AIRPORT;
- * \$7 800 000 FOR A CONTRIBUTION TO THE FOURTH REPLENISHMENT OF THE ASIAN DEVELOPMENT FUND;
- * \$30 417 000 TO MEET OUTSTANDING PAYMENTS FOR PARCEL POST, TRANSIT CHARGES, SURFACE MAIL, AIRMAIL AND SPEEDPOST TERMINAL DUES; AND
- * \$12 MILLION FOR PAYMENT OF A FINAL LUMP SUM SUBVENTION TO THE FEDERATION OF HONG KONG INDUSTRIES.

VARIOUS RECOMMENDATIONS OF THE PUBLIC WORKS SUB-COMMITTEE WILL ALSO BE PRESENTED FOR THE COMMITTEE'S APPROVAL.

- - - - 0 - - - -

RETAIL SALES SURVEY RESULTS FOR DECEMBER RELEASED
* * * * *

THE VALUE OF TOTAL RETAIL SALES IN DECEMBER 1986, PROVISIONALLY ESTIMATED AT \$7 167 MILLION, WAS 11 PER CENT HIGHER THAN IN DECEMBER 1985 WHILE THEIR VOLUME WAS 6 PER CENT HIGHER, ACCORDING TO THE PROVISIONAL RESULTS OF A SURVEY RELEASED TODAY (TUESDAY) BY THE CENSUS AND STATISTICS DEPARTMENT.

COMPARED WITH DECEMBER 1985, RETAIL SALES OF CONSUMER DURABLES INCREASED BY 17 PER CENT IN VALUE AND 7 PER CENT IN VOLUME. FOODSTUFFS, ALCOHOLIC DRINKS AND TOBACCO WENT UP BY 13 PER CENT IN SALES VALUE AND 11 PER CENT IN SALES VOLUME, WHILE THE CORRESPONDING INCREASES FOR +OTHER CONSUMER GOODS+ WERE 11 PER CENT AND 5 PER CENT.

CLOTHING, FOOTWEAR AND ALLIED PRODUCTS INCREASED BY 7 PER CENT IN SALES VALUE AND 1 PER CENT IN SALES VOLUME.

RETAIL SALES OF FUELS DECREASED BY 15 PER CENT IN VALUE BUT RECORDED ALMOST NO CHANGE IN VOLUME.

ANALYSED BY SELECTED TRADES, RETAIL SALES OF MOTOR VEHICLES AND PARTS ROSE VERY SUBSTANTIALLY IN VALUE AND SUBSTANTIALLY IN VOLUME.

SUPERMARKETS EXPERIENCED A CONSIDERABLE INCREASE IN SALES VALUE AND A MODERATE INCREASE IN SALES VOLUME. BOTH DEPARTMENT STORES AND CONSUMER DURABLES OTHER THAN MOTOR VEHICLES AND PARTS EXPERIENCED MODERATE INCREASES IN SALES VALUE AND SLIGHT INCREASES IN SALES VOLUME.

COMPARING THE FOURTH QUARTER OF 1986 WITH THE SAME QUARTER IN 1985, TOTAL RETAIL SALES INCREASED BY 10 PER CENT IN VALUE AND 5 PER CENT IN VOLUME. RETAIL SALES OF CONSUMER DURABLES AND OF CLOTHING, FOOTWEAR AND ALLIED PRODUCTS ROSE BY 16 PER CENT AND 15 PER CENT RESPECTIVELY IN VALUE AND BY 5 PER CENT AND 9 PER CENT RESPECTIVELY IN VOLUME.

FOODSTUFFS, ALCOHOLIC DRINKS AND TOBACCO WENT UP BY 11 PER CENT IN SALES VALUE AND 9 PER CENT IN SALES VOLUME, WHILE +OTHER CONSUMER GOODS+ INCREASED BY 10 PER CENT IN SALES VALUE AND 3 PER CENT IN SALES VOLUME. FUELS DROPPED BY 16 PER CENT IN SALES VALUE BUT HAD ALMOST NO CHANGE IN SALES VOLUME.

RETAIL SALES OF MOTOR VEHICLES AND PARTS ROSE VERY SUBSTANTIALLY IN VALUE AND CONSIDERABLY IN VOLUME, WHILE SALES BY SUPERMARKETS INCREASED CONSIDERABLY IN BOTH VALUE AND VOLUME. BOTH CONSUMER DURABLES OTHER THAN MOTOR VEHICLES AND PARTS AND DEPARTMENT STORES EXPERIENCED MODERATE INCREASES IN SALES VALUE AND SLIGHT INCREASES IN SALES VOLUME.

WHEN COMPARED WITH NOVEMBER 1986, AND BEARING IN MIND THAT THIS COMPARISON IS AFFECTED BY SEASONAL FACTORS, TOTAL RETAIL SALES FOR DECEMBER 1986 INCREASED BY 11 PER CENT IN VALUE AND 12 PER CENT IN VOLUME. RETAIL SALES OF +OTHER CONSUMER GOODS+ WENT UP BY 18 PER CENT IN VALUE AND 19 PER CENT IN VOLUME.

FOODSTUFFS, ALCOHOLIC DRINKS AND TOBACCO ROSE BY 12 PER CENT IN BOTH SALES VALUE AND VOLUME. CONSUMER DURABLES, FUELS AS WELL AS CLOTHING, FOOTWEAR AND ALLIED PRODUCTS INCREASED BY 4 PER CENT, 3 PER CENT AND 2 PER CENT RESPECTIVELY IN BOTH SALES VALUE AND VOLUME.

RETAIL SALES OF DEPARTMENT STORES INCREASED SUBSTANTIALLY IN BOTH SALES VALUE AND VOLUME. SUPERMARKETS AND MOTOR VEHICLES AND PARTS RECORDED CONSIDERABLE INCREASES IN BOTH SALES VALUE AND VOLUME. CONSUMER DURABLES OTHER THAN MOTOR VEHICLES AND PARTS ROSE SLIGHTLY IN BOTH SALES VALUE AND VOLUME.

TUESDAY, MARCH 10, 1987

- 7 -

TABLE 1 (COPIES OF TABLES AND GRAPHS WILL BE SENT BY FACSIMILE NETWORK AND ALSO BOXED FOR COLLECTION) PRESENTS THE REVISED TOTAL RETAIL SALES FIGURE FOR NOVEMBER 1986 AND THE PROVISIONAL FIGURE FOR DECEMBER 1986.

TABLE 2 SHOWS THE VALUE AND VOLUME INDEXES OF RETAIL SALES IN NOVEMBER 1986 AND DECEMBER 1986 (A) FOR ALL RETAIL SALES, (B) BY MAJOR TRADE GROUPS AND (C) BY SELECTED TRADES (WHICH FORM PART OF THE RELEVANT MAJOR TRADE GROUPS), WITH AVERAGE REATIL SALES FROM OCTOBER 1984 TO SEPTEMBER 1985 TAKEN AS 100.

COMPARISONS OF DECEMBER 1986 RESULTS WITH THOSE OF NOVEMBER 1986 AND WITH THOSE OF DECEMBER 1985 AND COMPARISONS OF RETAIL SALES IN THE FOURTH QUARTER 1986 WITH THE SAME QUARTER IN 1985 ARE ALSO GIVEN.

GRAPHS 1 AND 2 DEPICT RESPECTIVELY THE MOVEMENTS OF THE VALUE AND VOLUME INDEXES OF TOTAL RETAIL SALES FROM OCTOBER 1984 TO DECEMBER 1986 AND THE SEASONALLY ADJUSTED INDEXES AND TRENDS, FROM OCTOBER 1984 TO NOVEMBER 1986.

THE REPORT CONTAINING THE ANALYSIS OF THE DECEMBER 1986 SURVEY RESULTS IS ON SALE AT THE GOVERNMENT PUBLICATION SALES CENTRE, GENERAL POST OFFICE BUILDING, CONNAUGHT PLACE, AT \$1 PER COPY.

ENQUIRIES ABOUT THE SURVEY RESULTS MAY BE DIRECTED TO THE WHOLESALE AND RETAIL TRADE STATISTICS SECTION OF THE CENSUS AND STATISTICS DEPARTMENT ON 5-8234941.

/TABLE 1 : TOTAL

TABLE 1 : TOTAL RETAIL SALES

Total Retail Sales for December 1986 (Provisional Figure) = HK\$7 167 million
 for November 1986 (Revised Figure) = HK\$6 436 million

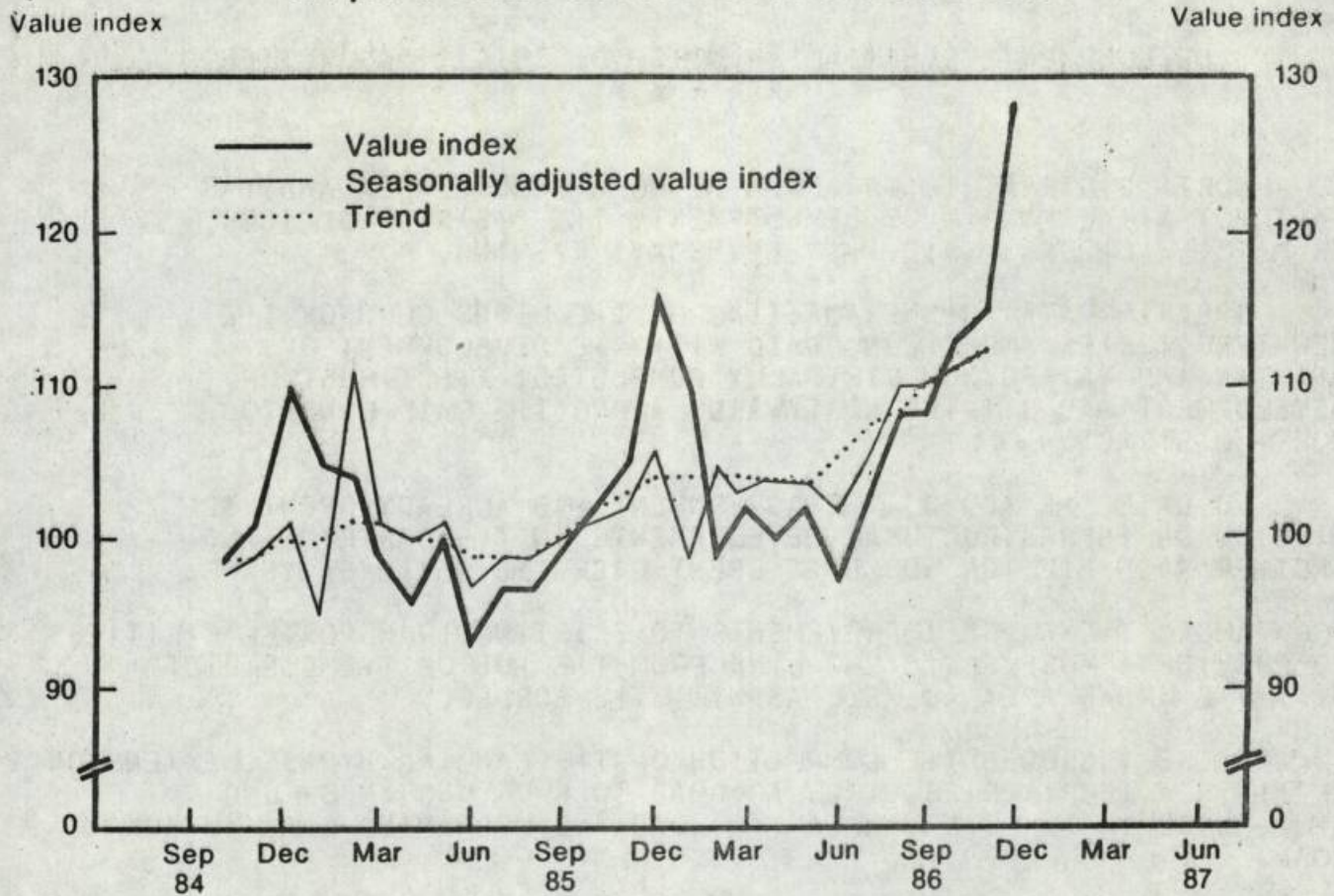
TABLE 2 : VALUE AND VOLUME INDEXES OF RETAIL SALES
FOR NOVEMBER AND DECEMBER 1986

(Monthly average of Oct. 84 - Sept. 85 = 100)

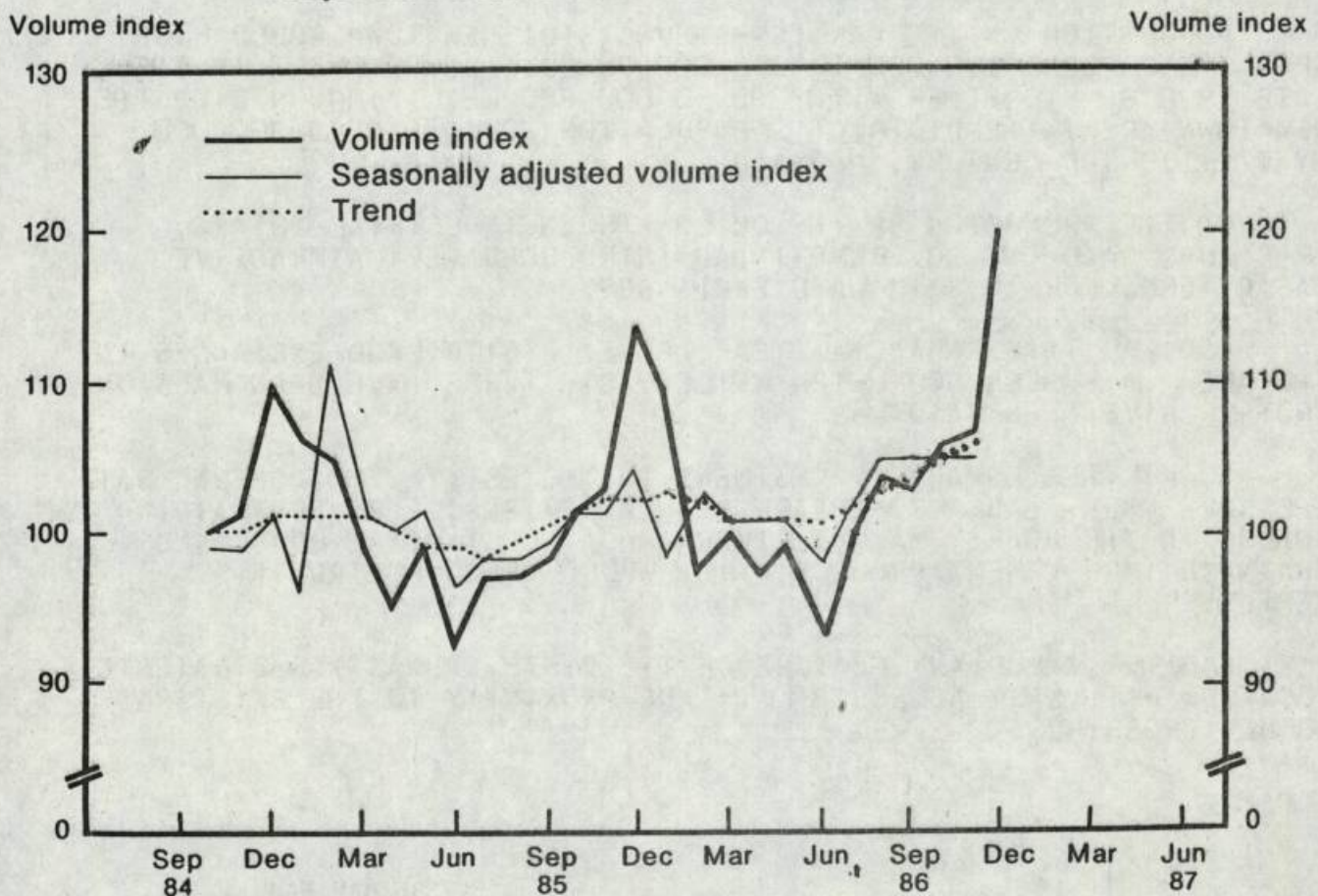
Item	Index of Retail Sales	November 1986	December 1986	December 1986 compared with November 1986		December 1986 compared with December 1985		Oct. - Dec. 86 compared with Oct. - Dec. 85	
		(Revised figures)	(Provisional figures)	Points	%	Points	%	Points	%
(A) FOR ALL RETAIL TRADES									
	Value	115	128	+ 13	+ 11	+ 12	+ 11	+ 11	+ 10
	Volume	108	120	+ 13	+ 12	+ 7	+ 6	+ 5	+ 5
(B) BY MAJOR TRADE GROUPS									
Foodstuffs, alcoholic drinks and tobacco	Value	102	114	+ 12	+ 12	+ 13	+ 13	+ 10	+ 11
	Volume	102	114	+ 12	+ 12	+ 11	+ 11	+ 9	+ 9
Fuels	Value	84	87	+ 3	+ 3	- 15	- 15	- 16	- 16
	Volume	99	102	+ 3	+ 3	*	*	*	*
Clothing, footwear and allied products	Value	149	152	+ 3	+ 2	+ 10	+ 7	+ 19	+ 15
	Volume	132	135	+ 3	+ 2	+ 1	+ 1	+ 10	+ 9
Consumer durables	Value	118	122	+ 5	+ 4	+ 18	+ 17	+ 17	+ 16
	Volume	106	110	+ 4	+ 4	+ 7	+ 7	+ 6	+ 5
Other consumer goods	Value	117	139	+ 22	+ 18	+ 14	+ 11	+ 11	+ 10
	Volume	107	128	+ 21	+ 19	+ 6	+ 5	+ 3	+ 3
(C) BY SELECTED TRADES									
Supermarkets	Value	109	128	+ 19	+ 17	+ 14	+ 12	+ 14	+ 14
	Volume	105	123	+ 18	+ 17	+ 11	+ 9	+ 11	+ 11
Motor vehicles and parts	Value	131	147	+ 16	+ 12	+ 48	+ 49	+ 39	+ 39
	Volume	106	119	+ 13	+ 12	+ 26	+ 28	+ 17	+ 18
Consumer durables other than motor vehicles and parts	Value	114	115	+ 1	+ 1	+ 8	+ 8	+ 10	+ 10
	Volume	106	107	+ 1	+ 1	+ 1	+ 1	+ 2	+ 2
Department stores	Value	126	159	+ 33	+ 26	+ 12	+ 8	+ 10	+ 8
	Volume	112	143	+ 31	+ 27	+ 3	+ 2	+ 3	+ 2

- Notes :
1. "Foodstuffs, alcoholic drinks and tobacco" includes "supermarkets".
 2. "Consumer durables" includes "motor vehicles and parts".
 3. "Other consumer goods" includes "department stores".
 4. Figures denoting changes are derived from the unrounded index figures.
 5. * denotes change of less than 0.5.

Graph 1: Value Indexes of Total Retail Sales



Graph 2: Volume Indexes of Total Retail Sales



Notes: (1) Monthly average of Oct. 84 - Sept. 85 = 100

(2) The seasonally adjusted value and volume indexes and Henderson trends are compiled using the X-11 variant seasonal adjustment program of the U.S. Bureau of the Census.

DEVELOPMENT POTENTIAL IN NORTH DISTRICT HIGHLIGHTED
* * * * *

NORTH DISTRICT IS FAR FROM BEING A REMOTE AREA AND HAS VAST POTENTIAL FOR MAJOR DEVELOPMENT, THE DISTRICT OFFICER, MR MATTHEW CHEUNG, SAID THIS (TUESDAY) EVENING.

SPEAKING AT A DINNER MEETING OF THE LIONS CLUB OF THE NEW TERRITORIES, MR CHEUNG SAID WITH THE DEVELOPMENT OF SHA TIN AND TAI PO NOW VIRTUALLY COMPLETED, THE THRUST OF DEVELOPMENT HAD SHIFTED NORTHWARDS ALONG THE RAIL-LINE TO NORTH DISTRICT.

TO DATE, HE ADDED, THE GOVERNMENT HAD ALREADY SPENT \$2 BILLION ON INFRASTRUCTURAL DEVELOPMENTS IN THE DISTRICT AND ANOTHER \$4.5 BILLION WOULD BE SPENT OVER THE NEXT FEW YEARS.

AMONG THEM WERE IMPROVEMENTS TO EXISTING TRANSPORT FACILITIES TO PROVIDE A MORE EFFICIENT LINK FROM THE HUB OF THE DISTRICT WITH THE URBAN AREA AS WELL AS WITH THE BORDER.

THESE INCLUDED THE COMPLETION OF THE FANLING BYPASS, EXTENSION OF THE NEW TERRITORIES CIRCULAR ROAD TO KWU TUNG IN SHEUNG SHUI, WIDENING OF THE MAN KAM TO ROAD AND UPGRADING SHA TAU KOK ROAD.

MR CHEUNG SAID THAT THE DISTRICT HAD A NUMBER OF FAVOURABLE FACTORS FOR INDUSTRIAL DEVELOPMENT. ONE OF THESE WAS THE ABUNDANT SUPPLY OF LABOUR FORCE.

POPULATION IN THE FANLING-SHEUNG SHUI NEW TOWN WOULD RISE FROM THE PRESENT 110 000 TO 256 000 ON FULL DEVELOPMENT IN THE LATE 1990'S. TOGETHER WITH THE 50 000 PEOPLE LIVING OUTSIDE THE NEW TOWN AREA, THE DISTRICT'S POPULATION WOULD EXCEED 300 000 BY THE TURN OF CENTURY, HE SAID.

ON THE PROMOTION OF THE ON LOK TSUEN INDUSTRIAL ESTATE, MR CHEUNG SAID THE GOVERNMENT HAD INTRODUCED VERY ATTRACTIVE BASIC TERMS FOR IN-SITU LAND EXCHANGES.

+SO FAR THIS FINANCIAL YEAR, FIVE IN-SITU LAND EXCHANGES IN THE AREA HAVE BEEN COMPLETED WHILE BASIC TERMS HAVE BEEN MADE ON ANOTHER FIVE,+ HE SAID.

TO FURTHER ENHANCE INVESTMENT IN THE ESTATE, MR. CHEUNG SAID THE GOVERNMENT HAD ALSO EMBARKED ON AN EXTENSIVE RIVER TRAINING SCHEME IN THE NEARBY MA WAT RIVER AND A SUBSTANTIAL ROADS AND DRAINAGE IMPROVEMENT PROJECT WHICH WOULD BE COMPLETED THIS SEPTEMBER.

ANOTHER IMPORTANT FEATURE OF THE DISTRICT WAS ITS STRATEGIC LOCATION WITH EASY ACCESSIBILITY AND PROXIMITY TO THE EXISTING BORDER CROSSINGS.

TUESDAY, MARCH 10, 1987

- 11 -

THE MAN KAM TO CONTROL POINT TOGETHER WITH THE SHA TAU KOK CONTROL POINT AND THE FUTURE LOK MA CHAU CROSSING, ALL WITHIN A FEW KILOMETRES FROM THE NEW TOWN HAD MADE NORTH DISTRICT WELL PLACED IN DEVELOPING TRADE WITH THE SHENZHEN ECONOMIC ZONE, HE SAID.

MR CHEUNG NOTED THAT THERE WERE INDICATIONS THAT THE PRIVATE SECTOR WAS BECOMING MORE AWARE OF THE POTENTIAL OF THE DISTRICT FOR LONG-TERM INDUSTRIAL DEVELOPMENT.

THIS WAS REFLECTED IN THE INTEREST SHOWN FOR THE THREE PIECES OF GOVERNMENT LAND PUT UP FOR SALE LAST YEAR -- ONE FOR COMMERCIAL-RESIDENTIAL DEVELOPMENT AND TWO FOR INDUSTRIAL PURPOSES, ALL OF WHICH HAD FETCHED UNEXPECTEDLY GOOD PRICES, HE ADDED.

- - - - 0 - - - -

\$5 MILLION RAISED FOR HOSPITAL EXTENSION
* * * * *

KWUN TONG RESIDENTS AND DISTRICT ORGANISATIONS HAVE RAISED MORE THAN \$5 MILLION FOR AN EXTENSION OF THE UNITED CHRISTIAN HOSPITAL IN A YEAR-LONG FUND-RAISING CAMPAIGN INITIATED BY THE DISTRICT BOARD.

THE SECRETARY FOR DISTRICT ADMINISTRATION, MR DONALD LIAO, THIS (TUESDAY) AFTERNOON PRESENTED A CHEQUE FOR \$5.2 MILLION TO THE CHAIRMAN OF THE UNITED CHRISTIAN HOSPITAL FUND-RAISING COMMITTEE, MRS JUNE LI, AT A CEREMONY HELD TO MARK THE END OF THE CAMPAIGN.

SPEAKING AT THE CEREMONY, MR LIAO NOTED THAT THE HOSPITAL HAD CLOSE RELATIONSHIP WITH RESIDENTS OF EAST KOWLOON. OWING TO THE RAPID GROWTH OF POPULATION IN THE AREA, THE HOSPITAL HAD TO BOOST ITS FACILITIES TO COPE WITH DEMANDS.

THE \$730 MILLION EXTENSION PLAN WOULD HELP INCREASE THE NUMBER OF BEDS FROM THE PRESENT 640 TO 1 400 AND THE CONSTRUCTION OF A 20-STOREY BUILDING TO HOUSE NEW TREATMENT DEPARTMENTS, HE SAID.

MR LIAO NOTED THAT A SERIES OF ACTIVITIES SUCH AS CHARITY WALK, FILM PREMIERE, CELEBRITY BASKETBALL MATCH, TAXI AND MINIBUS CHARITY RIDE, AND A FUND-RAISING COMPETITION HAD BEEN STAGED DURING THE CAMPAIGN PERIOD.

/+THE SUCCESS

TUESDAY, MARCH 10, 1987

- 12 -

+THE SUCCESS OF THESE ACTIVITIES HAVE FULLY DEMONSTRATED THE ENTHUSIASM AND CONCERN OF KWUN TONG RESIDENTS FOR THEIR DISTRICT,+ HE ADDED.

MR LIAO SAID IT WAS ENCOURAGING TO KNOW THAT THE CAMPAIGN HAD REACHED ITS ORIGINAL TARGET OF \$5 MILLION.

ALSO SPEAKING AT THE CHEQUE-PRESENTATION CEREMONY, KWUN TONG DISTRICT BOARD CHAIRMAN, MR LAM HANG-FAI, THANKED DONORS AND VARIOUS ORGANISATIONS FOR THEIR SUPPORT.

MR LAM SAID THE FUND-RAISING DRIVE ALSO DEMONSTRATED THE COMMUNITY BUILDING SPIRIT OF KWUN TONG RESIDENTS.

DURING THE CEREMONY, KWUN TONG DISTRICT OFFICER, MR EDDY CHAN, CHAIRMAN OF THE FUND-RAISING COMMITTEE, MRS JUNE LI, AND DR E.H. PATERSON FROM THE HOSPITAL PRESENTED SOUVENIRS TO REPRESENTATIVES OF THE 14 AREAS, TAXI AND MINIBUS ASSOCIATIONS AS WELL AS VARIOUS DISTRICT ORGANISATIONS WHICH TOOK PART IN THE DRIVE.

- - - - 0 - - - -

ANTI-RABIES DRIVE TO BE STEPPED UP
* * * * *

THE AGRICULTURE AND FISHERIES DEPARTMENT WILL STEP UP ITS ANTI-RABIES INOCULATION DRIVE THIS MONTH TO PREVENT A RESURGENCE OF THE DEADLY DISEASE.

SENIOR VETERINARY OFFICER, DR NORMAN CHENG, SAID TODAY (TUESDAY) THAT THE DEPARTMENT WOULD BE INTENSIFYING ITS MOBILE INOCULATION SERVICES TO COVER MORE REMOTE AREAS IN THE NEW TERRITORIES INCLUDING TSING YI ISLAND.

DURING THE PERIOD, THE TEAMS WOULD ALSO VISIT RURAL VILLAGES IN SAI KUNG AND YUEN LONG TO PROVIDE FREE INOCULATION AND LICENSING SERVICES TO DOG OWNERS.

+ANTI-RABIES INOCULATION AND STRAY DOG CONTROL ARE THE PRIMARY WAYS TO PREVENT RABIES OUTBREAK.

+AN INOCULATION IS GOOD FOR THREE YEARS. TO KEEP UP THE IMMUNITY OF PETS, IT IS IMPORTANT THAT THEY RECEIVE INOCULATION AT INTERVALS NOT EXCEEDING THREE YEARS,+ DR CHENG SAID.

/IN ADDITION,

TUESDAY, MARCH 10, 1987

- 13 -

IN ADDITION, OTHER STRINGENT CONTROL MEASURES, INCLUDING QUARANTINE OF IMPORTED DOGS AND CATS AND OBSERVATION OF BITER ANIMALS, WERE IN FORCE TO KEEP THE SITUATION WELL UNDER CONTROL.

ON TSING YI ISLAND, MOBILE INOCULATION TEAMS WILL CALL AT ST. PAUL'S VILLAGE, YIM TIN KOK VILLAGE, LAM TIN NEW VILLAGE, LAM TIN OLD VILLAGE, TAI WONG HA VILLAGE, TAI WONG HA CHAN UK VILLAGE, TAI WONG HA CHEUNG UK VILLAGE, TAI WONG HA TANG UK VILLAGE, SAN UK TSUEN, LO UK TSUEN, CHUNG MEI SHEUNG TSUEN, AND CHUNG MEI HA TSUEN.

THE SAI KUNG VILLAGES TO BE VISITED INCLUDE SHA TSUI, MA NAM WAT, NAM A, MOK TSE CHE, LUNG MEI, NAM SHAN, TAI NO, KAI HAM, NAI CHUNG, CHE HA, KWUN HANG, MA KWU LAM, TSENG TAU, TAI TUNG, HOI HA AND PAK SHA O.

THE YUEN LONG VILLAGES ARE TAI HONG WAI, KAT HING WAI, CHE TONG TSUEN, WING LUNG WAI, KO PO TSUEN, SHUI MEI TSUEN, SHUI TAU TSUEN, KAM TIN SAN TSUEN, SHA PO TSUEN AND FUNG KAT HEUNG.

DOG OWNERS IN THESE AREAS ARE URGED TO MAKE FULL USE OF THE FREE INOCULATION SERVICES AND TO SURRENDER UNWANTED ANIMALS TO THE DOG CONTROL TEAMS.

+THE LAW REQUIRES ALL DOGS OVER FIVE MONTHS' OLD TO BE LICENSED, INOCULATED AGAINST RABIES AND KEPT UNDER CONTROL AT ALL TIMES. FAILURE TO DO SO WILL RENDER THE OWNER LIABLE TO A MAXIMUM FINE OF \$5 000 AND SIX MONTHS' IMPRISONMENT,+ DR CHENG SAID.

- - - - 0 - - - -

MORE FACTORY INSPECTIONS FOR SAFETY EXERCISE
* * * * *

THE FACTORY INSPECTORATE DIVISION OF THE LABOUR DEPARTMENT IS CONDUCTING A SPECIAL FIRE AND CHEMICAL SAFETY CAMPAIGN IN INDUSTRIAL UNDERTAKINGS THROUGHOUT THE TERRITORY.

THE EXERCISE IS AIMED AT STRIKING HOME THE NEED AS WELL AS VARIOUS WAYS AND MEANS OF PREVENTING FIRE AND CHEMICAL HAZARDS AT WORK.

A DEPARTMENT SPOKESMAN SAID FACTORY INSPECTORS WOULD CONDUCT SPOT CHECKS ON FACTORIES UNTIL THE END OF APRIL.

+SPECIAL ATTENTION WILL BE PAID TO THOSE FACTORIES USING DANGEROUS CHEMICAL SUBSTANCES AND JEWELLERY WORKSHOPS USING PETROLEUM VAPOURISING JETS,+ HE SAID.

/+IN ADDITION,

TUESDAY, MARCH 10, 1987

- 14 -

+IN ADDITION, FOLLOW-UP ACTION WILL ALSO BE TAKEN ON FACTORIES THAT HAD BEEN ISSUED WITH 'NO SMOKING' PROHIBITION NOTICES DURING PREVIOUS INSPECTIONS.+

APART FROM CHECKING WORKING CONDITIONS, INSPECTORS WILL DISTRIBUTE TO WORKERS AN ILLUSTRATED LEAFLET ON THE CLASSIFICATION AND LABELLING OF DANGEROUS SUBSTANCES FOR THEIR REFERENCE.

THEY WILL ALSO REMIND EMPLOYERS OF THEIR RESPONSIBILITIES TO CARRY OUT REGULAR CHECKS ON EXHAUST SYSTEMS TO PLANTS AND PROCESSES TO ENSURE SAFETY IN WORKPLACES.

THE SPOKESMAN NOTED THAT THE CURRENT CAMPAIGN IS THE FOURTH MOUNTED BY THE DIVISION SINCE OCTOBER LAST YEAR.

THE FIRST THREE RELATED TO FIRE IN FUR-PROCESSING FACTORIES, SMOKING AT WORK, AND SAFE HANDLING AND USE OF CHEMICALS IN FACTORIES.

ALTOGETHER 7 400 VISITS WERE MADE TO FACTORIES DURING THE LAST THREE CAMPAIGNS RESULTING IN 133 PROSECUTIONS TAKEN OUT AGAINST IRREGULARITIES, THE MAJORITY OF WHICH CONCERNED BREACHES OF THE FIRE PREVENTION REGULATIONS.

AT THE SAME TIME, 2 617 FIRE PROHIBITION NOTICES WERE ISSUED TO PROHIBIT SMOKING IN THOSE FACTORIES WHERE INFLAMMABLE SUBSTANCE OR ARTICLE WAS PRESENT IN CONNECTION WITH ANY INDUSTRIAL PROCESS OR OPERATION.

THE SPOKESMAN DESCRIBED THE RESULTS AS +ENCOURAGING+ AND SAID SIMILAR CAMPAIGNS WOULD BE CARRIED OUT IN FUTURE TO SUSTAIN PROGRESS MADE SO FAR.

- - - - 0 - - - -

NEED TO PRESERVE TRADITION OF RESPECTING ELDERLY

* * * * *

MORE THAN 500 MONG KOK RESIDENTS AGED OVER 70 WERE TODAY (TUESDAY) TREATED TO A FEAST IN HONOUR OF SENIOR CITIZENS IN THE DISTRICT.

OFFICIATING AT THE DINNER RECEPTION, MONG KOK DISTRICT OFFICER, MRS BRENDA FUNG, SAID THE VIRTUE OF RESPECTING THE ELDERLY AND FILIAL PIETY SHOULD BE PRESERVED AND WIDELY PROMOTED.

+THE TRADITION OF RESPECTING THE ELDERLY IS ORIGINALLY DEEPLY ROOTED IN CHINESE SOCIETY. HOWEVER, WITH THE ADVANCEMENT OF MODERN SOCIETY, THIS VALUABLE VIRTUE IS SEEN AS ARCHAIC AND GRADUALLY FADING OUT,+ SHE SAID.

/NOTING

- 15 -

NOTING THAT THIS WAS THE 12TH YEAR FOR THE MONG KOK DISTRICT COUNTRYMEN AND CLANSMEN ASSOCIATION TO ORGANISE THE SENIOR CITIZEN DINNER RECEPTION, MRS FUNG PRAISED THE ASSOCIATION FOR TAKING THE LEAD TO PROMOTE THIS GOOD TRADITION.

SHE SAID THE ASSOCIATION HAD BEEN ACTIVELY HELPING TO BOOST WELFARE OF THE AGED AND TO ORGANISE ACTIVITIES FOR THEM.

THREE WOMEN AND THREE MEN, AGED 90 OR ABOVE, WERE SELECTED THE OLDEST CITIZENS AND RECEIVED SOUVENIRS FROM THE DISTRICT BOARD CHAIRMAN, MR CHOW CHUN-FAI, AND THE ASSISTANT DISTRICT OFFICER, MR EARNEST CHEUNG.

THE RECEPTION WAS SPONSORED BY THE MONG KOK DISTRICT BOARD.

- - - - 0 - - - -

MORE TIME TO APPLY FOR TAXI VOUCHERS
* * * * *

APPLICATION DEADLINE FOR THE TAXI VOUCHER SCHEME, DESIGNED TO SUBSIDISE THE TRAVELLING EXPENSES OF WHEELCHAIR-BOUND DISABLED, HAS BEEN EXTENDED FROM MARCH 14 TO APRIL 14, THE TRANSPORT DEPARTMENT ANNOUNCED TODAY (TUESDAY).

+AS IT WILL TAKE TIME TO COMPLETE APPLICATION FORMS, THE MOVE WILL ALLOW APPLICANTS AMPLE TIME TO SUBMIT THEIR APPLICATIONS,+ A DEPARTMENT SPOKESMAN SAID.

UNDER THE SCHEME, AN ELIGIBLE PERSON WILL BE ISSUED WITH TAXI VOUCHERS AMOUNTING TO \$55 PER MONTH TO PAY FOR TAXI FARES. APPLICANTS SHOULD BE 15 OR ABOVE WITH A MONTHLY HOUSEHOLD INCOME BELOW \$5 400 AND WITHOUT ENJOYING TAX EXEMPTIONS FOR THEIR VEHICLES.

+APPLICANTS OR THEIR REPRESENTATIVES ARE REQUIRED TO MAKE A STATUTORY DECLARATION ON THE APPLICATION FORMS. STATUTORY DECLARATION SERVICES ARE AVAILABLE AT DISTRICT OFFICES AND AT THE OFFICES OF THE TRANSPORT DEPARTMENT.+

APPLICATION FORMS ARE AVAILABLE FROM THE OFFICE OF THE TRANSPORT DEPARTMENT ON THE SECOND FLOOR, LOW BLOCK, QUEENSWAY GOVERNMENT OFFICES, 66 QUEENSWAY, HONG KONG; OR MAY BE OBTAINED THROUGH THE POST ON APPLICATION, EITHER IN WRITING OR BY PHONING (5-8623253).

COMPLETED FORMS SHOULD BE RETURNED BY POST OR BY AGENT TO THE TRANSPORT DEPARTMENT AT THE SECOND FLOOR, LOW BLOCK, QUEENSWAY GOVERNMENT OFFICES, HONG KONG.

/COMPLETED

COMPLETED APPLICATION FORMS CAN ALSO BE SUBMITTED IN PERSON OR BY AGENT TO:

- * TRANSPORT DEPARTMENT'S HEADQUARTERS AT 28/F, HIGH BLOCK, QUEENSWAY GOVERNMENT OFFICES, 66 QUEENSWAY, HONG KONG;
- * TRANSPORT DEPARTMENT'S HONG KONG LICENSING OFFICE AT 2 MURRAY ROAD, HONG KONG;
- * TRANSPORT DEPARTMENT'S SHA TIN LICENSING OFFICE AT KCR HOUSE, FIFTH FLOOR, SHA TIN STATION, NEW TERRITORIES;
- * TRANSPORT DEPARTMENT'S KOWLOON LICENSING OFFICE AT 56 DUNDAS STREET, NINTH FLOOR, KOWLOON; AND
- * TRANSPORT DEPARTMENT'S KWUN TONG LICENSING OFFICE AT KOWLOON EAST GOVERNMENT OFFICES, FIFTH FLOOR, 12 LEI YUE MUN ROAD.

FOR ENQUIRIES CALL 5-8623253.

- - - - 0 - - - -

PROCEDURE FOR CLAIMS AGAINST AUSTRAVEL

* * * * *

THE OFFICIAL RECEIVER ESTABLISHED A SPECIAL PROCEDURE FOR DEALING WITH CLAIMS AGAINST AUSTRAVEL COMPANY LIMITED. TOTAL CLAIMS RECEIVED UP TO YESTERDAY (MONDAY) WERE 3 231 AMOUNTING \$14.35 MILLION IN VALUE.

AS THE MAJORITY OF CLAIMS APPEAR TO HAVE BEEN RECEIVED, CLAIMANTS SHOULD NOTE THAT THE FOLLOWING TWO SPECIAL CENTRES WILL BE CLOSED AS FROM 4 PM TOMORROW (WEDNESDAY):

- * SCOUT HALL, COX'S ROAD, KOWLOON.
- * 47TH FLOOR, QUEENSWAY GOVERNMENT OFFICES, 66 QUEENSWAY, HONG KONG.

AFTER THAT DATE CLAIMANTS SHOULD GO TO THE OFFICIAL RECEIVER'S OFFICE, 12TH FLOOR, QUEENSWAY GOVERNMENT OFFICES, 66 QUEENSWAY, HONG KONG, DURING OFFICE HOURS.

THE PROCEDURE FOR MAKING CLAIMS IS OTHERWISE EXACTLY THE SAME.

- - - - 0 - - - -

TUESDAY, MARCH 10, 1987

- 17 -

CENTRAL ALLOCATION OF PRIMARY ONE PLACES
* * * * *

THE EDUCATION DEPARTMENT ANNOUNCED TODAY (TUESDAY) THAT CHILDREN WHO FAILED TO SECURE A DISCRETIONARY PRIMARY ONE PLACE FROM PUBLIC SECTOR SCHOOLS EARLIER WILL BE CENTRALLY ALLOCATED A PLACE IN A GOVERNMENT OR AIDED PRIMARY SCHOOL.

PARENTS OF SUCH CHILDREN WILL RECEIVE A LETTER FROM THE DEPARTMENT'S PRIMARY ONE ADMISSION UNIT SOON REQUESTING THEM TO GO TO A SPECIFIED DISTRIBUTION OR COLLECTION CENTRE TO COLLECT A +CHOICE OF SCHOOLS+ FORM AND A LIST OF ALL GOVERNMENT AND AIDED PRIMARY SCHOOLS IN THEIR OWN SCHOOL DISTRICT FROM SUNDAY (MARCH 15) TO MARCH 18 BETWEEN 9 AM AND 4 PM.

A DEPARTMENT SPOKESMAN SAID THAT PARENTS SHOULD RETURN COMPLETED FORMS TO THE SAME CENTRE WITHIN THE SAME PERIOD.

PARENTS WHO HAVE NOT RECEIVED THE LETTER BY MARCH 15 SHOULD CONTACT THE PRIMARY ONE ADMISSION UNIT ON 5-724383 DURING OFFICE HOURS AS SOON AS POSSIBLE.

IN DISTRICTS WHERE PUBLIC SECTOR PRIMARY SCHOOLS FALL SHORT OF DEMAND, CHILDREN WILL BE ASSIGNED TO SCHOOLS IN NEIGHBOURING DISTRICTS WHERE SUPPLY EXCEEDS DEMAND.

THE SPOKESMAN ASSURED PARENTS THAT THE ARRANGEMENT WOULD BE MADE IN SUCH A WAY AS TO ENABLE CHILDREN TO BE ALLOCATED TO A SCHOOL NEAR THEIR HOME.

THE CENTRAL ALLOCATION OF PRIMARY ONE PLACES IS SOLELY BASED ON PARENTAL CHOICE WITH NO REFERENCE TO THE POINTS SYSTEM, THE SPOKESMAN SAID, ADDING THAT A RANDOMISATION METHOD WOULD BE USED TO ENSURE FAIRNESS TO ALL APPLICANTS WHEN PLACES AT A SCHOOL ARE OVERSUBSCRIBED.

PARENTS WHO HAVE CHANGED THEIR ADDRESS RECENTLY OR ARE PLANNING TO MOVE TO A NEW ADDRESS IN THE NEAR FUTURE MUST INFORM THE PRIMARY ONE ADMISSION UNIT SO THAT ARRANGEMENTS CAN BE MADE TO ALLOCATE A PLACE TO THEIR CHILDREN IN THEIR NEW RESIDENTIAL DISTRICT.

RESULTS OF THE CENTRAL ALLOCATION OF PRIMARY ONE PLACES WOULD BE ANNOUNCED IN JUNE, THE SPOKESMAN SAID.

----- 0 -----

/18

TUESDAY, MARCH 10, 1987

- 18 -

DANCE CONTEST WINNERS SHOW THEIR WINNING STYLE
* * * * *

SEVENTEEN WINNING DANCING GROUPS OF THE 16TH OPEN DANCE CONTEST RECEIVED THEIR PRIZES AND PERFORMED AT THE CITY HALL CONCERT HALL THIS (TUESDAY) EVENING.

SPEAKING AT THE PRIZE-PRESENTATION CEREMONY, ACTING DEPUTY REGIONAL SECRETARY FOR HONG KONG AND KOWLOON, MR GREGORY LEUNG, SAID THE CONTEST HAD OFFERED A GOOD OPPORTUNITY FOR DANCE ENTHUSIASTS TO SHARE THEIR EXPERIENCE.

HE SAID THE PREPARATORY WORK OF THE CONTEST HAD ALSO PROVIDED A CHANCE FOR RESIDENTS TO TAKE PART IN COMMUNITY AFFAIRS.

THE WINNERS ALSO PERFORMED VARIOUS TYPES OF DANCES INCLUDING WESTERN, ORIENTAL, CLASSICAL AND MODERN DANCES.

THE DANCING GROUPS WERE SELECTED FROM 98 TEAMS WHICH TOOK PART IN THE TERRITORY-WIDE CONTEST HELD IN JANUARY.

THE 16TH OPEN DANCE CONTEST WAS ORGANISED BY THE KWUN TONG DISTRICT OFFICE AND THE KWUN TONG DISTRICT CULTURE AND RECREATION PROMOTION ASSOCIATION (KTDCRPA) AND CO-ORGANISED BY THE URBAN COUNCIL.

ALSO OFFICIATING AT THIS EVENING'S CEREMONY WERE THE KWUN TONG DISTRICT OFFICER, MR EDDY CHAN, LEGISLATIVE COUNCIL MEMBER, MR POON CHI-FAI, CHIEF MANAGER (LEISURE SERVICES), KOWLOON EAST, MR JOHNNY WOO, AND THE FOUNDING PRESIDENT OF KTDCRPA, MRS NG CHU LIN-FUN.

- - - - 0 - - - -

NEW PREMISES, NEW NAME
* * * * *

THE SECRETARIAT OF THE PLANNING COMMITTEE FOR THE THIRD UNIVERSITY WILL MOVE TO NEW PREMISES ON THE EIGHTH FLOOR OF ST JOHN'S BUILDING, 33 GARDEN ROAD, HONG KONG, ON THURSDAY (MARCH 12).

AFTER THE REMOVAL, IT WILL BE KNOWN AS THE SECRETARIAT OF THE PLANNING COMMITTEE FOR THE HONG KONG UNIVERSITY OF SCIENCE AND TECHNOLOGY.

PUBLIC ENQUIRIES MAY BE DIRECTED TO THE GENERAL REGISTRY OF THE SECRETARIAT ON 5-231517.

- - - - 0 - - - -

ILLEGAL ROOFTOP STRUCTURES TO BE DEMOLISHED

ACTION IS TO BE TAKEN TO DEMOLISH ILLEGAL ROOFTOP STRUCTURES IN EAST KOWLOON.

THE BUILDING AUTHORITY WILL APPLY IN HONG KONG DISTRICT COURT ON APRIL 24 FOR CLOSURE ORDERS TO BE MADE AGAINST THE STRUCTURES ON THE ROOF OVER FLATS 3601 AND 3604-3606, AMOY GARDENS, PHASE I, BLOCK B, 77 NGAU TAU KOK ROAD.

THE AUTHORITY TODAY (TUESDAY) POSTED NOTICES OF ITS INTENTION ON CONSPICUOUS PARTS OF THE STRUCTURES.

ORDERS TO DEMOLISH THE STRUCTURES WERE ISSUED TO OCCUPANTS UNDER THE BUILDINGS ORDINANCE IN AUGUST 1984 AND JUNE 1986 BUT THEY HAVE BEEN IGNORED.

THE STRUCTURES WILL BE DEMOLISHED ONCE THE CLOSURE ORDERS ARE MADE AND CLOSING THEM BEFORE DEMOLITION IS NECESSARY TO AVOID DANGER TO THEIR OCCUPANTS OR MEMBERS OF THE PUBLIC.

- - - - 0 - - - -

CUSTOM-MADE PLAY EQUIPMENT FOR NEW OPEN SPACE

A LOCAL OPEN SPACE, WHICH WILL INCLUDE A VARIETY OF PLAY EQUIPMENT, IS TO BE BUILT AT KWAI CHUNG.

CONSTRUCTION BEGAN ON MARCH 6 UNDER A CONTRACT, WORTH \$4.4 MILLION, AWARDED BY THE TERRITORY DEVELOPMENT DEPARTMENT TO K. WONG CONSTRUCTION COMPANY.

IT WILL BE LOCATED BETWEEN KWAI SHING CIRCUIT AND HING SHING ROAD, OCCUPYING AN AREA OF 8 300 SQUARE METRES.

THE CONTRACT INCLUDES LANDSCAPING, LIGHTING EQUIPMENT, SITTING-OUT AREAS, ROOFED SHELTERS AND A FULLY EQUIPPED PLAY AREA OF 240 SQUARE METRES.

THE PROJECT WILL BE HANDED OVER TO THE REGIONAL SERVICES DEPARTMENT ON COMPLETION IN EIGHT MONTHS. IT IS EXPECTED TO CATER MAINLY TO STUDENTS OF SEVERAL SCHOOLS IN THE AREA.

- - - - 0 - - - -

TUESDAY, MARCH 10, 1987

- 20 -

MID-SPAN BRIDGING CEREMONY
* * *

THE \$200 MILLION TSING YI NORTH BRIDGE, DUE FOR COMPLETION IN OCTOBER, WILL HAVE ITS MID-SPAN JOINED AT A CEREMONY TO BE HELD ON THURSDAY (MARCH 12) AT 11.30 AM.

THE PROJECT MANAGER (TSUEN WAN), DR E.G. PRYOR, AND REPRESENTATIVES FROM THE CONTRACTORS AND CONSULTING ENGINEERS WILL OFFICIATE AT THE CEREMONY.

NOTE TO EDITORS:

YOU ARE INVITED TO COVER THE EVENT.

MEDIA REPRESENTATIVES WILL BE TAKEN TO AND FROM THE BRIDGE BY COACH. THEY SHOULD ASSEMBLE AT THE CARPARK PODIUM OF MURRAY BUILDING, GARDEN ROAD, CENTRAL, BY 10 AM.

----- 0 -----

AUCTION OF SPECIAL CAR NUMBERS
* * *

THE TRANSPORT DEPARTMENT WILL HOLD ANOTHER AUCTION OF SPECIAL CAR REGISTRATION NUMBERS ON SATURDAY (MARCH 14) AT 10 AM IN THE CITY HALL RECITAL HALL.

A TOTAL OF 35 SPECIAL CAR NUMBERS WILL BE AVAILABLE FOR BIDDING. THEY ARE:

DL608	DL2888	DM786	DM6638	AB107
DM560	DM866	DL5516	DM3378	DM928
CY8787	DM3181	DM1	DL6222	DN1
DL560	CK3	DM1088	DL313	AC107
DL861	HK638	AP8333	DM230	AC1686
AH2525	DL786	AA635	DM322	7707
DL8818	CK22	DM13	DL5000	DM822

SUCCESSFUL BIDDERS MUST PAY IN CASH OR BY CHEQUE IMMEDIATELY AFTER BIDDING.

TUESDAY, MARCH 10, 1987

- 21 -

A DEPARTMENT SPOKESMAN REMINDED BIDDERS THAT THE VEHICLE REGISTRATION NUMBER WOULD BE ASSIGNED ONLY TO A VEHICLE REGISTERED IN THE NAME OF THE SUCCESSFUL BIDDER WITHIN 12 MONTHS OF THE AUCTION.

PROCEEDS OF THE AUCTION WILL AS USUAL GO TO THE GOVERNMENT LOTTERIES FUND.

THE COMING AUCTION WILL BE THE 112TH ORGANISED BY THE DEPARTMENT SINCE MAY 1973.

- - - - 0 - - - -

APPLICATIONS TO SPONSOR FIREWORKS DISPLAY
* * * * *

APPLICATIONS TO SPONSOR THE 1988 LUNAR NEW YEAR FIREWORKS DISPLAY SHOULD BE SUBMITTED TO THE SECRETARY FOR MUNICIPAL SERVICES AT LEAST NINE MONTHS BEFORE THE DATE PROPOSED FOR THE DISPLAY, THE DEPUTY SECRETARY FOR MUNICIPAL SERVICES, MR CLIVE OXLEY, SAID TODAY (TUESDAY).

FIREWORKS DISPLAY HAS NORMALLY BEEN HELD ON THE EVENING OF THE SECOND DAY OF THE LUNAR NEW YEAR.

APPLICATIONS SHOULD BE SUBMITTED TO THE MSB HEADQUARTERS ON THE 11TH FLOOR, HARBOUR CENTRE, 25 HARBOUR ROAD, WAN CHAI, BY APRIL 30.

AS IN PREVIOUS YEARS, GOVERNMENT RESERVES THE RIGHT TO APPROVE OR DISAPPROVE APPLICATIONS AND TO DECLINE TO GIVE REASONS FOR THE ACCEPTANCE OR REJECTION OF APPLICATIONS.

- - - - 0 - - - -

WORLD ENVIRONMENT DAY ON COMMITTEE'S AGENDA
* * * * *

THE ENVIRONMENTAL COMMITTEE OF YAU MA TEI DISTRICT BOARD WILL MEET ON THURSDAY (MARCH 12) TO DISCUSS WAYS TO COMMEMORATE THE UNITED NATIONS' WORLD ENVIRONMENT DAY ON JUNE 5.

ACTIVITIES HAVE BEEN ORGANISED IN MANY COUNTRIES OVER THE YEARS TO COMMEMORATE THE DAY TO ENHANCE ENVIRONMENTAL AWARENESS.

/OTHER ITEMS

OTHER ITEMS ON THE AGENDA INCLUDE A PROGRESS REPORT ON ENVIRONMENTAL AND BUILDING MANAGEMENT CASES RECEIVED AT THE MEET-THE-PUBLIC SESSIONS AND THE DISTRICT BOARD.

- - - - -

NOTE TO EDITORS:

YOU ARE INVITED TO COVER THE MEETING TO BE HELD AT 2.30 PM ON THURSDAY IN THE CONFERENCE ROOM OF YAU MA TEI DISTRICT OFFICE, SECOND FLOOR, 490 NATHAN ROAD.

- - - - 0 - - - -

TEMPORARY CLOSURE OF TUNNEL EXIT ROAD
* * * * *

THE EXIT ROAD LEADING FROM THE CROSS HARBOUR TUNNEL TO CAUSEWAY BAY WILL BE CLOSED FROM 1 AM TO 6 AM ON THURSDAY (MARCH 12) FOR ROAD WORKS.

DURING THE CLOSURE, AFFECTED VEHICLES WILL BE DIVERTED TO NORTH POINT EXIT ROAD, GLOUCESTER ROAD AND THE FLYOVER TO CAUSEWAY BAY.

- - - - 0 - - - -

SHORTER OPERATING HOURS FOR PARKING METERS
* * * * *

THE OPERATING HOURS FOR GOODS VEHICLE PARKING METERS IN SAN PO KONG INDUSTRIAL AREA WILL BE SHORTENED FROM THE EXISTING 16 HOURS A DAY TO 12 HOURS WITH EFFECT FROM THURSDAY (MARCH 12), THE TRANSPORT DEPARTMENT ANNOUNCED.

THE NEW OPERATING HOURS WILL BE FROM 8 AM TO 8 PM INSTEAD OF FROM 8 AM TO MIDNIGHT.

THESE METERS ARE LOCATED IN NG FONG STREET, SZE MEI STREET, LUK HOP STREET, KING FUK STREET, TSAT PO STREET, PAT TAT STREET, SAM CHUK STREET AND SHEUNG HEI STREET.

- - - - 0 - - - -

PLB PROHIBITED ZONE IN YUEN LONG
* * * * *

TIN SHUI WAI SOUTH WESTERN ACCESS ROAD IN YUEN LONG WILL BE MADE A 24-HOUR PROHIBITED ZONE FOR PUBLIC LIGHT BUSES FROM 10 AM ON FRIDAY (MARCH 13).

NO PLB WILL BE ALLOWED TO ENTER THE RESTRICTED AREA.

- - - - 0 - - - -