



DAILY INFORMATION BULLETIN

ISSUED BY GOVERNMENT INFORMATION SERVICES
BEACONSFIELD HOUSE, HONG KONG. TEL.: 2842 8777

Friday, July 21, 1995

<u>Contents</u>	<u>Page No.</u>
Consumer Price Indices for June 1995	1
Government's final accounts for 1994-1995	7
More endangered species added to protection list	7
Construction of Tsing Ma Bridge main span to start soon	8
Ceiling of severance payment raised	10
Additional polling stations gazetted	11
Village flood protection works	12
Laying of submarine cable system at Deep Water Bay	12
Improvement roadworks proposed	13
Land to be resumed for public open space	14
Rehabilitation programmes for inmates	15
Regional control strategy study for Deep Bay	15
Shark warning flags still up	16
Board amends Tseng Lan Shue Outline Zoning Plan	17
Arts Development Council nomination criteria explained	18
Ancient artefacts exhibition to be closed soon	19
Fresh water cut in Wan Chai	19
Hong Kong Monetary Authority money market operations	20

Consumer Price Indices for June 1995

* * * * *

The year-on-year rate of increase in the Consumer Price Index (A) moderated further to 8.9% in June 1995, from 9.1% in May.

This is shown in the latest Consumer Price Indices released today (Friday) by the Census and Statistics Department.

The rate of increase in the Consumer Price Index (B) and the Hang Seng CPI, at 9.6% and 9.7% respectively in June, was slightly faster than their corresponding increase of 9.5% in May.

The Composite CPI, which is compiled based on the combined expenditure pattern of all households, also showed a slightly faster increase of 9.4% in June, against 9.3% in May.

Commenting on the June figures on the CPI(A), a Government spokesman said faster price increases than in May were recorded for clothing and footwear, alcoholic drinks and transport. But these were more than offset by slower increase in the prices of foodstuffs, particularly the prices of vegetables in which there was actually a fall from a year earlier. A slight moderation in the overall increase in the CPI(A) thus resulted.

The spokesman also noted that, given the difference in weightings, the moderating effect from the lower prices of vegetables had a greater impact on the CPI(A) than on the other CPIs, while the boosting effect from the faster increase in prices of clothing and footwear affected the other CPIs more than the CPI(A).

Comparing June 1995 with June 1994, relatively faster price increases than the overall average were recorded for housing (12.6% in the CPI(A), 14.1% in the CPI(B) and 13.3% in the Composite CPI); miscellaneous services (11.6%, 11.0% and 10.7%); and clothing and footwear (10.6%, 11.1% and 10.8%).

Relatively slower price increases than the overall average were recorded for durable goods (4.3% in the CPI(A), 4.1% in the CPI(B) and 4.2% in the Composite CPI); food (excluding meals bought away from home) (6.5%, 6.8% and 6.7%); alcoholic drinks and tobacco (6.9%, 6.4% and 6.7%); meals bought away from home (7.3%, 7.1% and 7.3%); transport (7.7%, 7.9% and 7.6%); miscellaneous goods (8.2%, 7.0% and 7.4%); and fuel and light (8.7%, 9.0% and 8.6%).

Comparing June 1995 with May 1995, the CPI(A), CPI(B) and Composite CPI all increased by 0.7%.

Taking the first six months together, the increases in the CPI(A) and CPI(B) averaged at 9.3% and 9.8% respectively over a year earlier. The corresponding increase for the Composite CPI was 9.7%.

For the three months ended June 1995, the CPI(A) and CPI(B) were, on average, higher by 9.2% and 9.7% respectively over a year earlier. The corresponding increase for the Composite CPI was 9.5%.

For the 12 months ended June 1995, the CPI(A) and CPI(B) were, on average, higher by 9.0% and 9.5% respectively than in the preceding 12-month period. The corresponding increase for the Composite CPI was 9.5%.

Seasonally adjusted series are also available for the PIs. The deseasonalised CPI(A) and CPI(B) both increased at an average rate of 0.6% per month during the three months ended June 1995. The corresponding increase for the Composite CPI was 0.7%.

Further details are shown in Tables 1-2 and Charts 1-4.

The Consumer Price Index Report

More details are given in the "Consumer Price Index Report" for June 1995, which is available at \$23 per copy from the Government Publications Centre, Queensway Government Offices, ground floor, Low Block, 66 Queensway, Hong Kong; or from the Publications Unit of the Census and Statistics Department, 19th floor, Wanchai Tower, 12 Harbour Road, Wan Chai, Hong Kong.

For local and overseas mailings, contact should be made with the Information Services Department, 28th floor, Siu On Centre, 188 Lockhart Road, Wan Chai, Hong Kong.

For enquiries about the indices, please telephone the Consumer Price Index Section of the Census and Statistics Department at 2805 6403.

Details regarding the Hang Seng CPI are contained in the Hang Seng CPI Report issued by the Economic Research Department of Hang Seng Bank Ltd.

Table 1 Consumer Price Indices and Rates of Increase for June 1995
(Oct. 89 - Sep. 90 = 100)

Component	CPI(A)		CPI(B)		Hang Seng CPI		Composite CPI	
	Index for Jun 95	% change over Jun 94	Index for Jun 95	% change over Jun 94	Index for Jun 95	% change over Jun 94	Index for Jun 95	% change over Jun 94
Food	150.9	+6.9	152.8	+7.0	155.1	+7.5	152.4	+7.1
Meals bought away from home	162.3	+7.3	161.7	+7.1	162.7	+7.9	162.2	+7.3
Food, excluding meals bought away from home	139.5	+6.5	140.5	+6.8	142.0	+6.9	140.3	+6.7
Housing	184.0	+12.6	188.8	+14.1	194.8	+13.1	189.2	+13.3
Fuel and light	134.8	+8.7	134.4	+9.0	133.0	+7.6	134.4	+8.6
Alcoholic drinks and tobacco	199.6	+6.9	188.9	+6.4	184.1	+6.4	193.6	+6.7
Clothing and footwear	152.8	+10.6	156.0	+11.1	175.6	+10.7	161.9	+10.8
Durable goods	117.4	+4.3	117.2	+4.1	123.2	+4.3	119.0	+4.2
Miscellaneous goods	141.8	+8.2	137.3	+7.0	135.8	+6.6	138.5	+7.4
Transport	160.2	+7.7	159.1	+7.9	156.3	+7.1	158.7	+7.6
Miscellaneous services	173.5	+11.6	167.3	+11.0	155.1	+9.3	165.5	+10.7
All items	159.2	+8.9	161.1	+9.6	165.6	+9.7	161.6	+9.4

Monthly consumer price indices are compiled on the basis of (a) expenditure patterns of relevant households and (b) prices collected currently in the month. The expenditure patterns underlying the 1989/90-based consumer price indices are based on those patterns derived from the 1989/90 Household Expenditure Survey. The CPI(A) is based on the expenditure pattern of about 50% of households in Hong Kong, which had an average monthly expenditure of \$2,500-\$9,999 in 1989/90 (broadly equivalent to \$3,900-\$16,000 at 1995 prices). The CPI(B) is based on the expenditure pattern of the next 30% of households, which had an average monthly expenditure of \$10,000-\$17,499 in 1989/90 (broadly equivalent to \$16,000-\$28,500 at 1995 prices). The Hang Seng CPI is based on the expenditure pattern of the next 10% of households, which had an average monthly expenditure of \$17,500-\$37,499 in 1989/90 (broadly equivalent to \$28,500-\$61,000 at 1995 prices).

Whereas the CPI(A), CPI(B) and Hang Seng CPI are based on the expenditure patterns of groups of households with different magnitudes of household expenditure, the Composite CPI is compiled based on the expenditure pattern of all these households taken together. Thus, while the CPI(A), CPI(B) and Hang Seng CPI show the impact of consumer price changes on different groups of households, the Composite CPI shows the impact of consumer price changes on the household sector generally.

Table 2 Consumer Price Indices for June 1992 - June 1995
(Oct. 89 - Sep. 90 = 100)

<u>Year/month</u>	<u>CPI(A)</u>	<u>CPI(B)</u>	<u>Hang Seng CPI</u>	<u>Composite CPI</u>
1992 June	125.3	125.1	125.2	125.2
July	125.5	125.4	125.4	125.4
August	125.6	125.9	125.8	125.8
September	128.3	127.9	127.5	128.0
October	128.4	128.4	128.6	128.5
November	128.5	129.0	129.9	129.0
December	129.3	129.8	130.0	129.7
1993 January	131.8	131.6	131.5	131.7
February	132.4	132.2	132.0	132.2
March	132.0	132.2	133.1	132.4
April	133.5	133.9	134.5	133.9
May	134.5	134.8	136.3	135.1
June	136.0	135.9	137.1	136.3
July	135.8	136.1	136.9	136.2
August	136.3	136.6	137.4	136.7
September	138.4	138.3	139.2	138.6
October	140.0	139.6	140.7	140.0
November	139.4	139.9	142.2	140.3
December	140.4	140.9	143.3	141.3
1994 January	140.0	140.7	143.4	141.1
February	142.7	142.9	144.9	143.3
March	142.5	143.0	145.3	143.4
April	143.8	144.8	147.9	145.2
May	145.0	146.1	150.0	146.7
June	146.2	146.9	151.0	147.7
July	147.3	147.9	150.5	148.3
August	149.6	149.6	151.7	150.1
September	150.3	150.8	153.4	151.3
October	151.1	152.2	155.3	152.6
November	151.4	153.1	157.3	153.5
December	153.0	154.3	158.1	154.8
1995 January	154.1	155.3	158.2	155.6
February	155.4	156.6	159.0	156.7
March	156.1	157.4	159.7	157.5
April	157.6	159.2	162.3	159.4
May	158.1	159.9	164.2	160.4
June	159.2	161.1	165.6	161.6

Chart 1 Year-on-year Rates of Increase
in CPI(A)

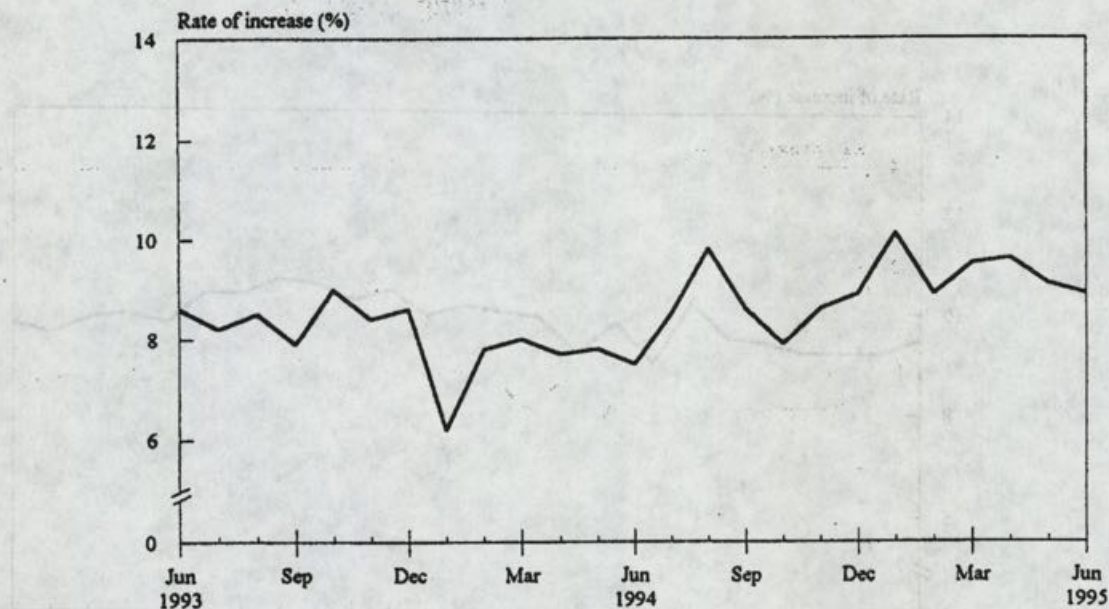


Chart 2 Year-on-year Rates of Increase
in CPI(B)

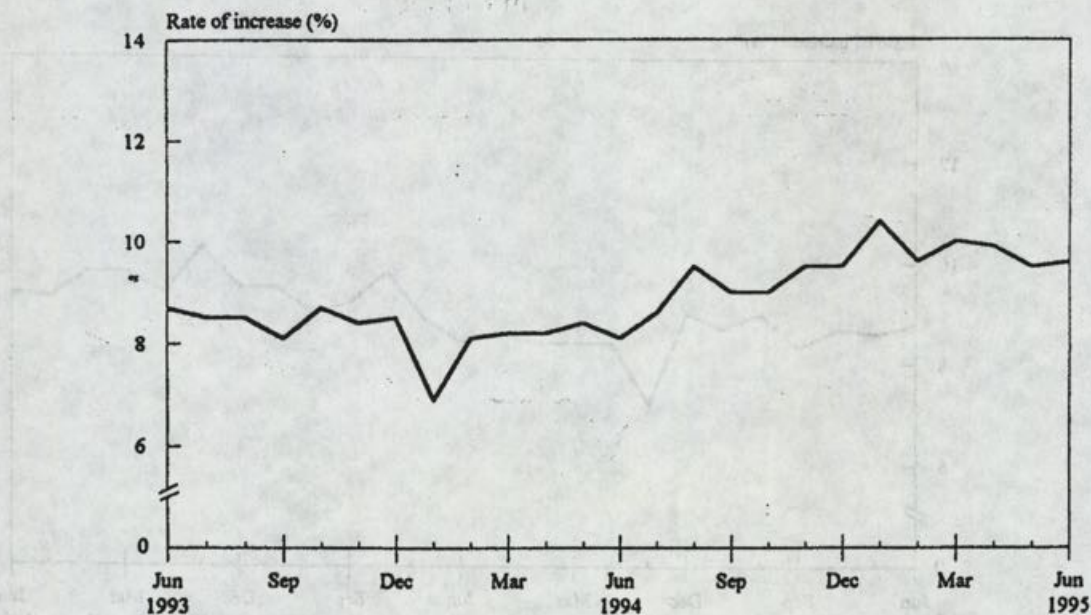


Chart 3 Year-on-year Rates of Increase
in Hang Seng CPI

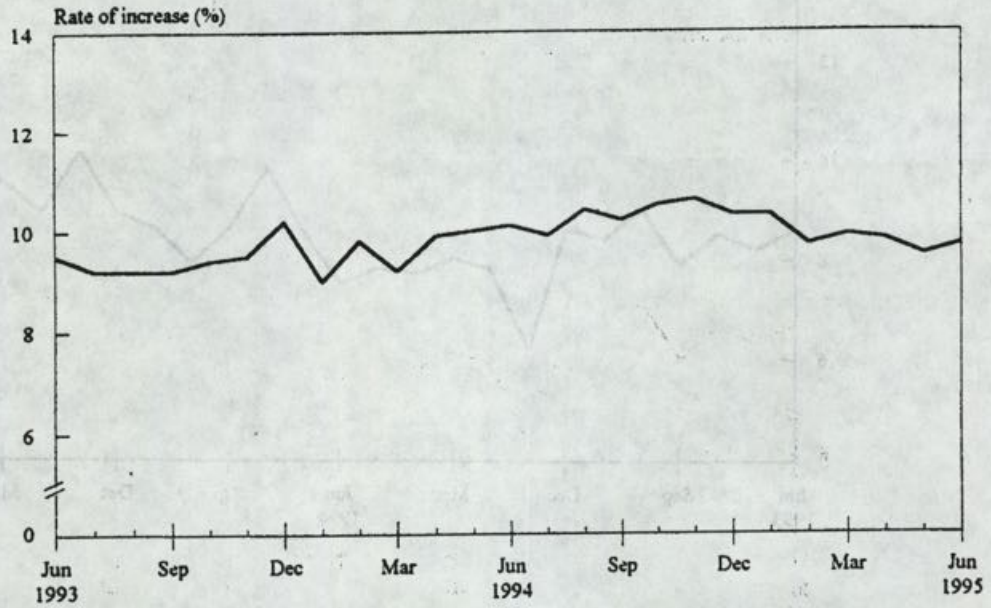
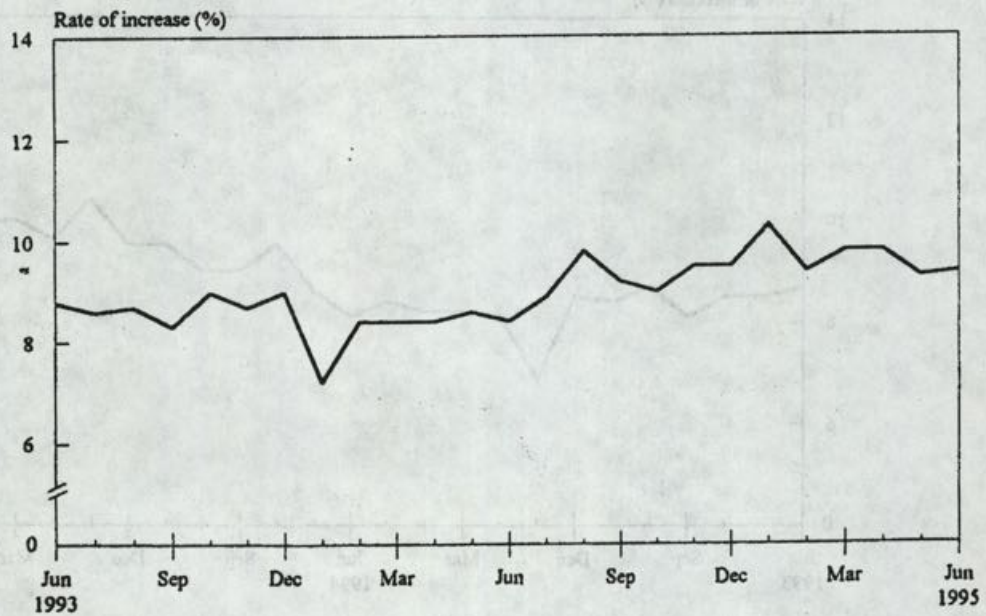


Chart 4 Year-on-year Rates of Increase
in Composite CPI



Government's final accounts for 1994-1995

* * * * *

The Government's final accounts for the financial year 1994-95, which ended on 31 March, 1995, were published today (Friday) in the Gazette.

Total revenue for the year was \$175.0 billion compared to the revised estimate of \$173.5 billion given in the 1995 Budget Speech. Total expenditure was \$164.2 billion against a revised estimate of \$165.8 billion.

A government spokesman said: "The additional revenue reflected the effect of higher interest rates in the final quarter of the year which had boosted the investment earnings on the fiscal reserves, together with higher than anticipated receipts from Stamp Duty following the increase in property transactions around the Lunar New Year."

The underspending of \$1.6 billion, (about 1% of the revised estimate) is made up of a number of minor variances.

As a result, the overall surplus for 1994-95 was \$10.8 billion. This brings the total fiscal reserves to \$151.0 billion at March 31, 1995.

End/Friday, July 21, 1995

More endangered species added to protection list

* * * * *

A number of amendments have been made to the schedules to the Animals and Plants (Protection of Endangered Species) Ordinance to revise the list of species which are subject to licensing control.

Among the species newly added to the control list are hippopotamus, saiga antelope and agar wood which are traded in Hong Kong.

An Agriculture and Fisheries Department (AFD) spokesman today (Friday) said the amendments were made following decisions reached at a conference of the Convention on International Trade in Endangered Species of Wild Fauna and Flora (CITES) last November.

With immediate effect, the import and export of species added to the schedules will be subject to licensing control.

Examples of other newly-listed species which might be of concern to Hong Kong include box turtles, all species of pangolin, Indian flap-shell turtle, tarantulas, emperor scorpions and Himalayan yew.

The spokesman pointed out that Hong Kong also imposed control on possession of endangered species. However, to minimise resource implications, possession licence for saiga antelope horn, hippopotamus teeth, agar wood and some less endangered species would be exempted.

As the control on possession is Hong Kong's own requirement, rather than a CITES requirement, the exemptions would not breach the Convention, he added.

Amendments to the schedules to the Animals and Plants (Protection of Endangered Species) Ordinance published in today's gazette also included certain delistings of species such as aloe vera.

The spokesman said the Endangered Species Advisory Committee, with representatives drawn from the scientific community, the Chinese medicine trade and traders of animals and plants, had been consulted and supported the amendments.

He reminded the public that the maximum penalty for offences under the Animals and Plants (Protection of Endangered Species) Ordinance is a \$5 million fine and two years' imprisonment.

Enquiries on the amendments to the schedules can be made to AFD's Fauna Conservation Section on 2733 2124.

End/Friday, July 21, 1995.

Construction of Tsing Ma Bridge main span to start soon

* * * * *

Work on the Tsing Ma Bridge, one of the world's longest suspension bridges, will soon enter a significant phase.

Lifting of the Tsing Ma Bridge's main span deck sections is set to start in a few weeks' time.

The bridge's main span stretching across the Ma Wan Channel and the side span at Ma Wan will be formed by 95 steel units. Each unit measures 18 metres long, 8 metres high and 41 metres wide and weighs up to 500 tonnes. Most units will be lifted in pairs.

The deck units are being assembled in Dongguan, China, using steel components from Britain and Japan. The assembly work started in the summer of 1993 and all the main steelwork is substantially complete. The units are now being fitted out and painted.

The deck units will be transported by barge, generally two pairs at a time, in a 10-hour journey down the Pearl River Estuary to the bridge.

Tsing Ma Bridge is part of the Lantau Fixed Crossing, one of the 10 projects in the Airport Core Programme (ACP).

"Work on the bridge construction is now about 78 per cent finished and it will be completed on target in mid-1997," the acting Project Director of the Lantau Fixed Crossing Project Management Office of the Highways Department, Mr C K Lau, said today (Friday).

"The aerial spinning of the two main cables started in July last year and was completed on target in April this year. A total of 160,000 kilometres long wires, enough to circle the world four times, were deployed.

"After compaction, the two main cables now measure 1.1 metres each in diameter and will be among the longest and thickest bridge cables to be found anywhere in the world," Mr Lau said.

Mr Lau also said lifting of the 95 deck units would be completed in about six months' time, during which part of the Ma Wan Channel would need to be closed on average for two days each week.

"The Highways Department is liaising closely with the contractor, the Marine Department and the Marine Police to minimise the effect on marine traffic," he said.

When completed, the Tsing Ma Bridge will be a double-decked 2.2 kilometres long suspension bridge carrying six lanes of expressway on the upper deck and two rail tracks and two single emergency traffic lanes on the enclosed lower deck for use in bad weather.

Together with the 820 metres long Kap Shui Mun cable-stayed bridge and the Ma Wan Viaduct, it will form the Lantau Fixed Crossing linking the new airport at Chek Lap Kok and the Tung Chung new town to urban Kowloon and Hong Kong.

The Tsing Ma Bridge is being built by Anglo Japanese Construction Joint Venture under a \$7.2 billion construction contract awarded by the Highways Department in May 1992.

End/Friday, July 21, 1995

Ceiling of severance payment raised

* * * * *

The maximum payment from the Protection of Wages on Insolvency Fund in respect of severance payment has been increased from \$8,000 plus 50 per cent of any excess entitlements to \$24,000 plus 50 per cent of any excess entitlements with effect from today (Friday).

The adjustment was made following an amendment of a resolution to the Protection of Wages on Insolvency Ordinance was passed by the Legislative Council on Wednesday (July 19). Details of the resolution were gazetted today. A Labour Department spokesman pointed out that the increase would only apply to a severance payment the liability for payment of which arose on or after 21 July 1995 when the resolution came into effect.

"The improvement will enable low income employees, particularly those with a shorter length of service, to obtain a relatively higher percentage of severance payment from the Fund," he said.

Enquiries on the increase of severance payment from the Fund can be made to the Wage Security Unit on 2923 5330.

End/Friday, July 21, 1995

Additional polling stations gazetted

* * * * *

A total of 56 more polling stations will be designated for the September Legislative Council elections, it was gazetted today (Friday).

The addition will bring the number of combined polling stations for the geographical constituency (GC) and functional constituency (FC) elections (except the Urban Council, Regional Council and Rural FCs) to 492. A spokesman for the Registration and Electoral Office said opening more polling stations was to make it more convenient for electors to vote.

"Under this arrangement, most electors will be able to cast their votes for both the GC and FC at the same polling station near their home," he said.

The spokesman added that electors whose polling stations have been changed would be notified.

Of the 492 polling stations, 204 will be accessible to electors with a difficulty in walking.

If such electors were assigned to the other polling stations, they may - at least five days before the polling day - apply to the Chief Electoral Officer for re-allocation to vote in a specified polling station in the district.

A total of 32 specified polling stations will be open for the LegCo elections.

The Election Committee Constituency (ECC) and the Urban Council, Regional Council and Rural FCs will each have its own centralised polling station.

End/Friday, July 21, 1995

Village flood protection works

* * * * *

The Government plans to construct an earth bund, a pumping station, a flood storage pond and a drainage channel at Chuk Yuen Tsuen and Ha San Wai, Yuen Long, in order to protect the villages from flooding.

The works will be carried out within an area of 0.89 hectares of foreshore and sea-bed, beginning in late 1996 for completion by mid-1999.

The extent of the area affected is notified in the Gazette today (Friday).

The notice and its related plan can be seen at the Lands Department's Survey and Mapping Office, 14th floor, Murray Building, Garden Road; and at the Yuen Long District Office, Ground Floor, Yuen Long District Branch Office Building, 269 Castle Peak Road, Yuen Long.

The plan can also be purchased at the Survey and Mapping Office.

Any person who considers that his interest, right or easement in or over the foreshore and sea-bed involved will be affected by the works may submit a written objection to the Director of Lands on or before September 21, 1995.

End/Friday, July 21, 1995

Laying of submarine cable system at Deep Water Bay

* * * * *

The Government will grant a licence to Hong Kong Telecom Limited to lay a submarine cable system at Deep Water Bay in order to extend telecommunication services among Hong Kong, Thailand and Vietnam.

The works will be carried out within an area of 595,000 square metres of foreshore and sea-bed at Deep water Bay, beginning in August for completion in about two months.

The extent of the area affected is described in a notice of authorisation published in the Gazette today (Friday).

The notice and its related plan can be seen at the Lands Department's Survey and Mapping office, 14th floor, Murray Building, Garden Road; and at the Central and Western District Office; Public Enquiry Service Centre, ground floor, Harbour Building, 38 Pier Road, Central; the District Lands Office, Hong Kong South, 20th floor, Southorn Centre, 130 Hennessy Road, Wan Chai; and at the Southern District Office, Shop 25, ground floor, Mei Fung Court, Aberdeen Centre, 7-11 Nam Ning Street, Aberdeen.

The plan can also be purchased at the Survey and Mapping Office.

Any person who considers that his interest, right or easement in or over the foreshore and sea-bed involved will be affected by the works may send to the Director of Lands a written claim for compensation on or before July 21, 1996.

He should state the sum of money which he is willing to accept in full and final settlement of his claim and should submit particulars to substantiate his claim.

End/Friday, July 21, 1995

Improvement roadworks proposed

* * * * *

The Government proposes executing roadworks to improve Shun Tat Street in Tuen Mun.

The roadworks are required to improve Shun Tat Street to a carriageway about 10.3 metres wide. It will also include drainage and utility accommodation works.

The extent of the area affected is notified in the Gazette today (Friday).

The notice can be seen on notice boards posted near the site.

The plan and the scheme can also be seen at the Central and Western District Office, Public Enquiry Service Centre, Ground Floor, Harbour Building, 38 Pier Road, Central; at the District Lands Office, Tuen Mun, sixth and seventh floors, Tuen Mun Government Offices, 1 Tuen Hi Road, Tuen Mun; and at the Tuen Mun District Office, second floor, Tuen Mun Government Offices, 1 Tuen Hi Road, Tuen Mun.

Meanwhile, the Government also proposes amending the plan on reconstruction of an access road to Fung Kong Tsuen in Yuen Long.

The amendment is required to tie-in the limit of the works as shown on the plan with the land resumption limit as shown on a resumption plan.

A notice concerning the proposed amendment is notified in the Gazette today (Friday).

The works plan and scheme can be seen at the Central and Western District Office, Public Enquiry Service Centre, Ground floor, Harbour Building, 38 Pier Road, Central; at the District Lands Office, Yuen Long, Yuen Long Government Offices and Tai Kiu Market, ninth to 11th floors, 2 Kiu Lok Square, Yuen Long; and at the Yuen Long District Office, Yuen Long District Branch Offices Building, 269 Castle Peak Road, Yuen Long.

Any person who wishes to object to the above proposed roadworks and amendment may send his objection in writing to the Secretary for Transport, Central Government Offices, East Wing, second floor, Lower Albert Road, not later than September 19, 1995.

End/Friday, July 21, 1995

Land to be resumed for public open space

* * * * *

The Government will resume two vacant lots in Graham Street, Central, for developing a public open space. The lots located at nos 48 and 50 Graham Street, have a total area of about 186 square metres.

A notice of the land resumption is published in the Gazette today (Friday).

The land will be reverted to the Government three months from the date of the Gazette Notice.

End/Friday, July 21, 1995

Rehabilitation programmes for inmates

* * * * *

The Government has placed a growing emphasis on the rehabilitation of offenders over the years, the Chief Secretary, Mrs Anson Chan, said.

Speaking at the passing-out parade of the Correctional Services Department today (Friday), Mrs Chan pointed out that the work of the department nowadays was no longer simply a matter of maintaining offenders in safe custody. She noted that a range of rehabilitative programmes was provided for adults, juveniles and people with special needs, such as drug addicts and those suffering from mental illness.

"The objective of these programmes is to prepare inmates for their successful re-integration into society as law-abiding citizens," she said.

Turning to prison over-crowding, the Chief Secretary praised the Correctional Services Department for taking the initiative to tackle the problem from within its own resources by developing additional penal accommodation at Nei Kwu Detention Centre and Hei Ling Chau Correctional Institution.

"I want to assure you all that we are actively exploring short-term and long-term measures to increase prison accommodation so as to lighten the burden on you all," said Mrs Chan.

End/Friday, July 21, 1995

Regional control strategy study for Deep Bay

* * * * *

Deep Bay, being one of the most polluted bodies of water in Hong Kong, desperately needs a comprehensive strategy to control polluting inputs to a level that the Bay can absorb, the acting Assistant Director of the Environmental Protection Department (EPD), Dr Malcolm Broom, said today (Friday).

He was speaking after the signing of an agreement between the EPD and a joint venture of AXIS Environmental Consultants Ltd and Consultants in Environmental Sciences (Asia) Ltd for a consultancy study to develop a Regional Control Strategy for Deep Bay.

"The study will draw up strategic options for controlling the polluting inputs into Deep Bay so that the water quality objectives can be met.

"This is important to protect the fragile and internationally recognised mudflat and mangrove ecosystems there," Dr Broom said.

For this purpose, the consultants will study in detail the water movements, water quality, and pollution loadings in the Bay.

"A mathematical model of the natural processes of self purification will be developed. This will be used to help determine how much pollution the Bay can absorb.

"Strategic options will then be developed, aimed at ensuring this loading is not exceeded," he said.

The Hong Kong-Guangdong Environmental Protection Liaison Group has endorsed the study as an important step towards acquiring the necessary tools to manage the Deep Bay environment properly.

The study will cost about \$12 million and will take about two years to complete.

Attention News Editors:

For further enquiries, please contact Senior Environmental Protection Officer Mr Anthony Fok at 2835 1239.

End/Friday, July 21, 1995

Shark warning flags still up

Shark warning flags are still being hoisted at eight Sai Kung beaches under the management of the Regional Council.

This serves to remind beachgoers to remain vigilant and to stay away from such beaches for the time being despite the fact that no confirmed shark sightings have been made since July 7.

Members of the public, in particular students now on holiday, wishing to take a dip in the sea, or engage in water activities, should do so only at other gazetted beaches or in waters outside Sai Kung. They may also make use of the 27 swimming complexes under the two municipal councils.

"Parents are urged to help ensure that their children are aware of the potential danger to themselves and to follow the advice of lifeguards and/or the police on the spot," a spokesman for the Recreation and Culture Branch appealed to members of the public today (Friday).

The Government Flying Service is continuing with its dawn surveillance programme over Sai Kung waters during the weekend to monitor the situation. Lifeguards at gazetted beaches and the Marine Police are also on the alert to spot sharks and respond as necessary.

Shark warning flags have been hoisted at the Campers, Clear Water Bay First, Clear Water Bay Second, Hap Mun Bay, Kiu Tsui, Pak Sha Chau, Silverstrand and Trio beaches since June 2.

End/Friday, July 21, 1995

Board amends Tseng Lan Shue Outline Zoning Plan

* * * * *

The Town Planning Board today (Friday) announced an amendment to the draft Tseng Lan Shue Outline Zoning Plan.

A spokesman of the Board said the amendment would facilitate the implementation of a residential development scheme recently approved by the Rural and New Town Planning Committee of the Town Planning Board.

The development restrictions on 'Residential (Group C)1' zone in the 'Remarks' of the Notes of the Plan have been amended from "plot ratio (PR) of 0.9, site coverage (SC) of 45%, height not exceeding 9 metres with two storeys over one level of carport, or PR of 0.9, SC of 30%, height not exceeding 12 metres with three storeys over one level of carport" to "PR of 1.5, SC of 30% and height not exceeding 18 metres with five storeys over one level of carport".

The amendment Plan, No S/SK-TLS/2, is now available for public inspection until August 11 during normal office hours at Planning Department, 16th Floor, Murray Building, Garden Road, Central; Sai Kung & Tseung Kwan O District Planning Office, Suite 1209, 12th Floor, Chinachem Golden Plaza, 77 Mody Road, Tsim Sha Tsui East, Kowloon; and Sai Kung District Office, second floor, Sai Kung Government Offices Building, 34 Chan Man Street, Sai Kung, New Territories.

Any person affected by the amendment plan may submit written objections to the Secretary of the Town Planning Board, c/o Planning Department, 13th Floor, Murray Building, Garden Road, Hong Kong on or before August 11.

Copies of the draft plan are available for sale at the Survey and Mapping Office, Lands Department, 14th floor, Murray Building, Garden Road, and the Kowloon Map Sales Office, ground floor, 382 Nathan Road, Kowloon.

End/Friday, July 21, 1995

Arts Development Council nomination criteria explained

* * * * *

The question of whether and how full-time employees/artists of some professional performing companies which do not have an open membership can participate in the nomination process has been raised at a recent forum organised by the Music and Dance Committee and the Drama and Traditional Performance Committee of the Hong Kong Arts Development Council (ADC).

A representative of the Recreation and Culture Branch told the forum that there were three ways of doing so.

First, the employees/artists may request their employer, i.e. the performing company, to open up its membership by including a class of affiliated members and to apply to be a specified organisation.

"If it becomes so, the employees of the company can, in the capacity of the affiliated members, enjoy the right of being involved in the decisions on the nomination of candidate for consideration by the Governor for appointment as a member of the ADC," he said.

"But this may involve amendments to the respective constitution or the Memorandum and Articles of Association of the performing company."

Secondly, they may consider forming a new organisation themselves and apply to be a specified organisation in the name of that organisation.

Lastly, they may join an existing organisation of the same arts interest either as members or affiliated members if that organisation applies to be a specified organisation.

The spokesman pointed out that persons employed by the Urban Council or the Regional Council were not eligible for nomination or appointment by the Governor under subsection 3(6)(f) of the Hong Kong Arts Development Council Ordinance. Nevertheless, they may still participate in the nomination process, he added.

End/Friday, July 21, 1995

Ancient artefacts exhibition to be closed soon

* * * * *

The exhibition "Rescuing our Archaeological Past - Major Discoveries since 1989" now being held at the Antiquities and Monuments Office at 136 Nathan Road, Kowloon, will be closed from Sunday (July 23), a week earlier than originally scheduled. This is to facilitate urgent repair and renovation work to be carried out on site.

The exhibition features important heritage items discovered in Hong Kong in the past five years. It has been opened to the public since early March.

Members of the public wishing to visit the exhibition can do so during office hours from 9.30 am to 4.30 pm today (Friday) and from 9.30 am to 5 pm tomorrow (Saturday).

End/Friday, July 21, 1995

Fresh water cut in Wan Chai

* * * * *

Fresh water supply to some premises in Wan Chai will be temporarily suspended from 11 pm on Monday (July 24) to 6 am the following day to facilitate water mains leakage detection.

The suspension will affect all the premises at 176A-298 Johnston Road, 106-202 and 107-185 Wan Chai Road, Bullock Lane, Cross lane, Wood Road, Salvation Army Street, 6-8, 7-9 and 44 Oi Kwan Road, Wing Cheung Street, Heard Street, Mallory Street and Burrows Street.

End/Friday, July 21, 1995

Hong Kong Monetary Authority money market operations

	<u>\$ million</u>	<u>Time (hours)</u>	<u>Cumulative change (\$million)</u>
Opening balance in the account	2,004	0930	+297
Closing balance in the account	1,721	1000	+297
Change attributable to :		1100	+297
Money market activity	+297	1200	+297
LAF today	-580	1500	+297
		1600	+297

LAF rate 4.25% bid/6.25% offer TWI 119.2 **+0.2* 21.7.95

Hong Kong Monetary Authority

EF bills		EF notes				
Terms	Yield	Term	Issue	Coupon	Price	Yield
1 week	5.28	2 years	2705	6.40	100.83	5.99
1 month	5.40	3 years	3804	6.90	101.60	6.35
3 months	5.47	5 years	5006	6.60	98.55	7.07
6 months	5.53	5 years	M501	7.90	102.00	7.53
12 months	5.61					

Total turnover of EF bills and notes - \$9,729 million

Closed July 21, 1995

End/Friday, July 21, 1995