



TABLE 1 (Cont'd)

Grade	Zone	Headquarters & Health/Miscellaneous Services	Kowloon Hospital	Prince of Wales Hospital	Princess Margaret Hospital	Queen Elizabeth Hospital	Queen Mary Hospital	Medical Services	Mental Health Service	Total	Strength on 31.3.1984
Laundry Manager/Assistant Laundry Manager		3				3				6	6
Linens Production Unit Manager/Linens Production Unit Supervisor		5				1				6	6
Machinist		84								84	84
Medical Board Assistant		1								1	1
Mortuary Supervisor				1	1	2	1	3		8	8
Orthoptist I								3		3	3
Senior Optical Technician/Optical Technician				1	1	2	1	6		7	5
Photographer I/Photographer II				12	6	4		24		42	40
Senior Prosthetist/Prosthetist I/Prosthetist II/Student Prosthetist				2	2			9		17	17
Scientific Officer (Medical)								3		3	2
Speech Therapist		4								4	4
Tailor		1								1	1
Senior Training Officer											

TABLE 1 (Cont'd)

Grade	Zone	Headquarters & Health/Miscellaneous Services	Kowloon Hospital	Prince of Wales Hospital	Princess Margaret Hospital	Queen Elizabeth Hospital	Queen Mary Hospital	Medical Services	Mental Health Service	Total	Strength on 31.3.1984
*Administrative Officer Staff Grade 'B' / Administrative Officer Staff Grade 'C' / Senior Administrative Officer/Administrative Officer		5+3@								5+3@	9
Chauffeur		1								1	1
Chief Management Services Officer/Senior Management Services Officer/Management Services Officer I/Management Services Officer II		7								7	6
*Principal Executive Officer/Chief Executive Officer/Senior Executive Officer/Executive Officer I/Executive Officer II		37+1@				1				38+1@	38
Chinese Language Officer I/Chinese Language Officer II		2								2	2
*General Grade Staff		710	40	39	113	174	104	319	100	1599	1625
*Senior Health Inspector/Health Inspector I/Health Inspector II		11								11	12
Chief Information Officer/Senior Information Officer/Information Officer/Assistant Information Officer I/Assistant Information Officer II		9								9	6
Senior Statistician/Statistician/Statistical Officer I/Statistical Officer II/Student Statistical Officer		23			1	2	1			27	27

TABLE 1 (Cont'd)

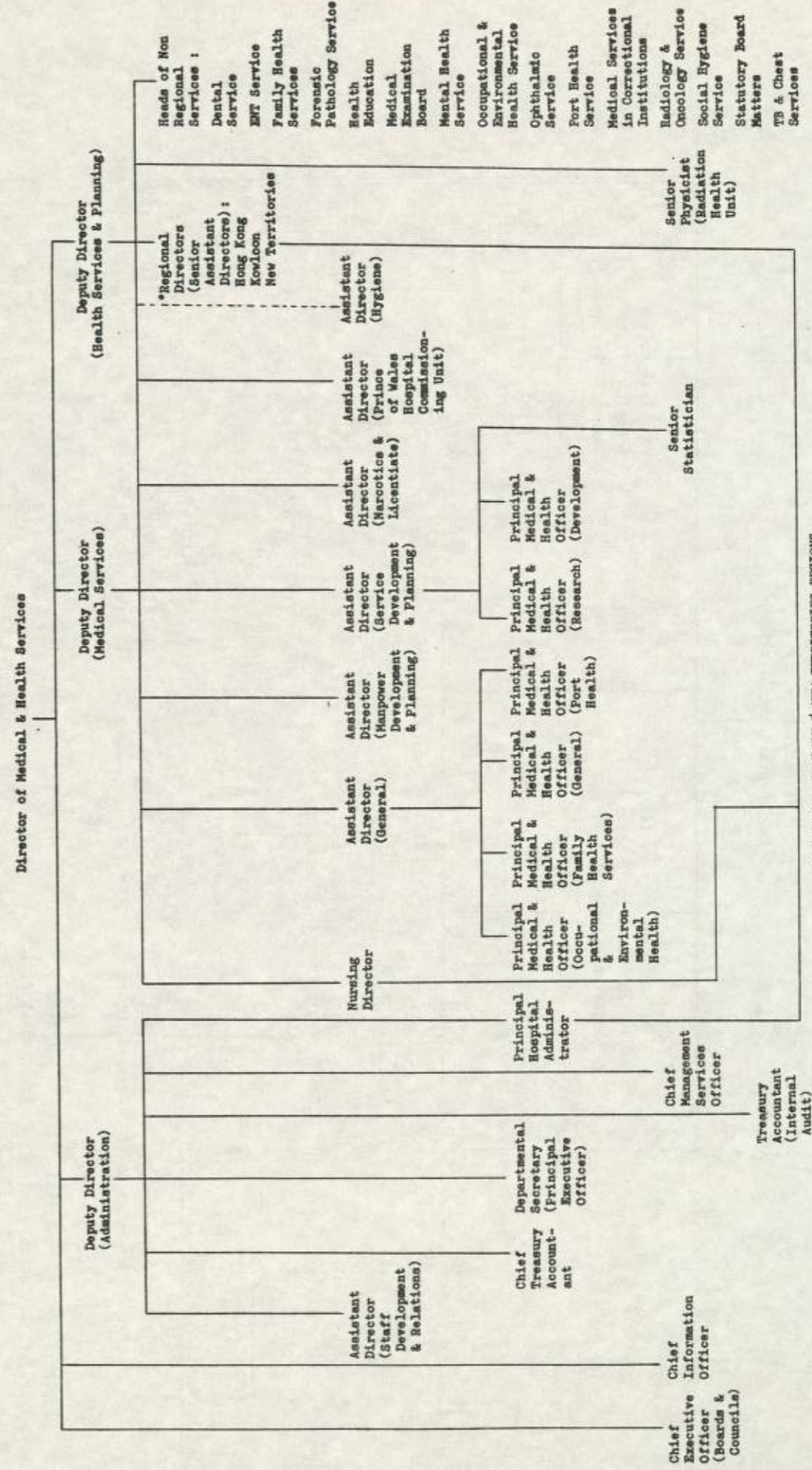
Grade	Headquarters & Health/Miscellaneous Services	Kowloon Hospital	Prince of Wales Hospital	Princess Margaret Hospital	Queen Elizabeth Hospital	Queen Mary Hospital	Medical Services	Mental Health Service	Total	Strength on 31.3.1984
*Chief Supplies Officer/Senior Supplies Officer/ Supplies Officer/Assistant Supplies Officer/ Supplies Supervisor I/Supplies Supervisor II/ Supplies Assistant *Telephone Operator	38	6	9	10	11	6	26	11	117	118
Chief Treasury Accountant/Senior Treasury Accountant/ Treasury Accountant/Accounting Officer I/ Accounting Officer II	2	5	2	7	8	7	18	11	60	61
*Minor Staff	15								15	15
Total	3894+5 <sup>@</sup>	1048	1775	2655	3838	2543	4004	2606	22363+5 <sup>@</sup>	7098

@ Supernumerary posts

\* Excluding (843) supernumerary posts held against other posts

# Excluding (3) supernumerary posts created for short leave replacement

TABLE 2 ORGANISATION OF MEDICAL & HEALTH DEPARTMENT - POSITION AS AT 31.3.1984



\* Organization of a Region is shown at Table 2(a)



TABLE 4 LEGISLATION OF MEDICAL AND HEALTH IMPORTANCE  
APRIL 1983 to MARCH 1984

ORDINANCE

Drug Addiction Treatment Centres (Amendment) Ordinance 1983  
Smoking (Public Health) (Amendment) Ordinance 1983  
Dangerous Drugs (Amendment) Ordinance 1984

RULES AND REGULATIONS

Coroners Ordinance, Chapter 14 :

Places for Post-Mortem Examination  
(Amendment) Order 1983  
(No. 2) Order 1983

Dangerous Drugs Ordinance, Chapter 134 :

Dangerous Drugs (Amendment of First Schedule)  
Order 1983

Drug Addiction Treatment Centres Ordinance, Chapter 244 :

Drug Addiction Treatment Centres (Amendment) Regulations 1983

Medical Clinics Ordinance, Chapter 343 :

Resolution-Powers of Registrar of Clinics  
exercisable until 31 December 1986

Mental Health Ordinance, Chapter 136 :

Mental Health (Kwai Chung Psychiatric Observation Unit)  
(Mental Hospital) Order 1983

Public Health (Animals and Birds) Ordinance, Chapter 139 :

Public Health (Animals and Birds) (Amendment) Regulations 1983  
Regulations of Movement of Dogs Order 1983  
(No. 2) Order 1983  
(No. 3) Order 1983

Quarantine and Prevention of Disease Ordinance, Chapter 141 :

Quarantine and Prevention of Disease (Scale of Charges)  
(Amendment) Regulations 1983

Smoking (Public Health) (Amendment) Ordinance 1983, No.52 of 1983 :

Smoking (Public Health) (Amendment) Ordinance 1983 (Commencement)  
Notice 1983

TABLE 5 WORK OF STATUTORY COUNCILS - APRIL 1983 TO MARCH 1984

WORK	COUNCIL	MEDICAL		DENTAL		
		Local List	Overseas List	Local List	Dentists	
					Overseas List	Dental Hygienists
Number on the Register on 31.3.1984		3 983	528	857	94	57
Number of applications for registration	Registration Provisional Registration (Part II)	326 153	38	124	26	6
Number of Registrations	Registration Provisional Registration (Part IV of Register)	326 *106	38	72	26	6
Number of Examinations held	Multiple-Choice Question Paper Oral Oral & Practical Written	*1 *1 - *2	- - - -	- - 89 2	- - - -	- - - -
Number of Candidates examined	Multiple-Choice Question Paper Oral Oral & Practical Written	*347 *126 - *97	- - - -	- - 160 38	- - - -	- - - -
Number of successful Candidates	Multiple-Choice Question Paper Oral Oral & Practical Written	*84 *107 - *92	- - - -	- - 27 32	- - - -	- - - -
Disciplinary Hearings held	No. of hearings No. of persons charged	5 5	- -	2 2	- -	- -
Number of removals from Register		80	40	33	31	-

Number of Meetings held : Medical Council - 2  
Dental Council - 3  
Licentiate Committee & its Sub-Committees - 17

\* Licentiate Scheme for unregistrable doctors

TABLE 6 WORK OF STATUTORY BOARDS - APRIL 1983 TO MARCH 1984

BOARD  WORK	Nursing							Midwives	Pharmacy & Poisons
	Registered			Enrolled		Sick Children	Mental		
	General	Mental	Mentally Sub-normal	General	Mental				
Number on the Register on 31.3.1984	12 729	602	6	4 246	302	1	7 918	473	
Number of applications for registration	838	89	2	347	25	1	326	62	
Number of registrations granted	810	89	2	329	25	1	323	33	
Number of examinations held	3	3	-	3	3	-	4	2	
Number of candidates examined	772	87	-	340	41	-	314	82	
Number of successful candidates	656	70	-	327	32	-	305	15	
Disciplinary hearings held	1	-	-	-	-	-	1	6	
No. of hearings	1	-	-	-	-	-	1	8	
No. of persons charged	-	-	-	-	-	-	-	9	
Appeal hearings held	-	-	-	-	-	-	-	9	
No. of appeals	4	-	-	-	1	-	1	13	
Number of removals from register	-	-	-	-	-	-	-	3	
Number of restoration to register	-	-	-	-	-	-	-	-	

Number of Meetings held : Nursing Board - 3  
 Midwives Board - 4  
 Pharmacy and Poisons Board - 2  
 Poisons Committee - 4

TABLE 6(a) SUPPLEMENTARY MEDICAL PROFESSIONS COUNCIL  
 APRIL 1983 TO MARCH 1984

Number of meetings held :-

Supplementary Medical Professions Council	1
Supplementary Medical Professions Council Working Party	2
Medical Laboratory Technicians Board	-
Physiotherapists Board	-
Radiographers Board	2
Occupational Therapists Board	1
Occupational Therapists Board Working Party	-

TABLE 6(b) DETAILS OF LICENCES ISSUED BY THE RADIATION BOARD  
 APRIL 1983 TO MARCH 1984

	Irradiating Apparatus		Radioactive Substances
	Possess & Operate	Possess	
Total number of Licences remained in force as at 31.3.84	748	45	446
Number of Applications for Licences	145	-	114
Number of New Licences granted	174	149	126
Number of Licences cancelled	150	133	47

TABLE 7 ESTIMATED POPULATION BY AGE GROUP AT MID-1983

Age Group	Male	Female	Total
0	44 300	41 900	86 200
1 - 4	176 700	165 200	341 900
5 - 9	213 500	197 600	411 100
10 - 14	223 800	207 000	430 800
15 - 19	264 900	246 900	511 800
20 - 24	316 200	293 100	609 300
25 - 29	293 000	263 200	556 200
30 - 34	249 100	213 300	462 400
35 - 39	175 300	140 300	315 600
40 - 44	136 200	105 400	241 600
45 - 49	147 800	120 500	268 300
50 - 54	143 300	124 700	268 000
55 - 59	122 900	113 100	236 000
60 - 64	97 600	96 100	193 700
65 - 69	74 200	80 200	154 400
70 - 74	46 100	60 900	107 000
75 - 79	23 300	41 300	64 600
80 & over	14 700	39 600	54 300
Total	2 762 900	2 550 300	5 313 200

TABLE 8 VITAL STATISTICS - HONG KONG (Absolute Number)

Year	Population* (1)	Registered# Live Births (2)	Registered# Deaths (3)	Late Foetal Deaths (Still Births) (4)	Early@ Neo. Deaths (5)	Late@ Neo. Deaths (6)	Post@ Neo. Deaths (7)	Peri-@ Natal Deaths (8)=(4)+(5)	Neo-@ Natal Deaths (9)=(5)+(6)	Infant# Deaths (10)=(5)+(6)+(7)	Maternal Deaths (11)
1956	2 614 600	96 746	19 295	988	1 303	1 039	3 553	2 291	2 342	5 895	88
1957	2 736 300	97 834	19 365	1 245	1 323	1 007	3 106	2 568	2 330	5 436	105
1958	2 854 100	106 624	20 554	1 297	1 413	1 079	3 294	2 710	2 492	5 786	92
1959	2 967 400	104 579	20 250	1 393	1 335	888	2 831	2 728	2 223	5 054	77
1960	3 075 300	110 667	19 146	1 680	1 309	1 003	2 279	2 989	2 312	4 591	55
1961	3 168 100	108 726(110 884)	18 738(19 325)	1 683	1 226	1 054	1 818	2 909	2 280	4 098	50
1962	3 305 200	111 905(112 503)	20 324(20 933)	1 560	1 260	1 109	1 761	2 820	2 369	4 130	54
1963	3 420 900	115 263(114 550)	19 748(20 340)	1 633	1 206	972	1 623	2 839	2 178	3 801	34
1964	3 504 600	108 519(107 625)	18 113(18 657)	1 485	1 115	684	1 071	2 600	1 799	2 870	42
1965	3 597 900	102 195(101 110)	17 621(18 150)	1 363	1 017	537	871	2 380	1 554	2 425	34
1966	3 629 900	92 476 (91 832)	18 700(19 261)	1 246	1 011	407	882	2 257	1 418	2 300	40
1967	3 722 800	88 171 (88 215)	19 644(20 234)	999	958	440	862	1 957	1 398	2 260	27
1968	3 802 700	82 992 (82 685)	19 319(19 444)	832	843	404	664	1 675	1 247	1 911	12
1969	3 863 900	79 329 (82 482)	18 730(19 256)	757	810	373	548	1 567	1 183	1 731	12
1970	3 959 000	77 465 (79 132)	20 763(19 996)	726	734	252	535	1 460	986	1 521	15
1971	4 045 300	76 818 (79 789)	20 253(20 374)	656	716	254	440	1 372	970	1 410(1 415)	11
1972	4 115 700	79 053 (80 344)	21 145(21 397)	736	740	174	466	1 476	914	1 380(1 396)	16
1973	4 212 600	80 147 (82 252)	21 360(21 251)	681	724	157	464	1 405	881	1 345(1 351)	8
1974	4 319 600	81 879 (83 581)	22 050(21 879)	621	717	184	520	1 338	901	1 421(1 407)	13
1975	4 395 800	78 200 (79 790)	21 191(21 597)	565	671	133	369	1 236	804	1 173(1 192)	2
1976	4 443 800	76 342 (78 486)	23 195(22 692)	521	564	127	401	1 085	691	1 092(1 077)	14
1977	4 509 800	78 807 (80 022)	23 459(23 346)	528	565	140	388	1 093	705	1 093(1 081)	13
1978	4 597 000	79 173 (80 957)	22 843(23 830)	431	539	115	280	970	654	934 (956)	5
1979	4 878 600	82 157 (81 975)	26 179(25 125)	389	570	124	398	959	694	1 092(1 011)	7
1980	5 038 500	85 406 (85 290)	25 987(25 008)	483	532	135	341	1 015	667	1 008 (956)	4
1981	5 154 100	87 104 (86 632)	24 978(24 678)	475	471	104	271	946	575	846 (839)	7
1982	5 232 900	86 036 (86 160)	25 460(25 262)	438	482	116	255	920	598	853 (854)	1
1983	5 313 200	82 015 (83 356)	26 485(26 255)	386	465	109	256	851	574	830 (822)	6

\* 1956-1960 based on the 1961 Census, 1961-1970 based on the 1971 Census, 1971-1976 based on the 1976 By-Census, 1977-1980 based on the 1981 Census.  
 # Figures in brackets denote adjusted births and deaths for 1961-1968 and known births and deaths for 1969-1983.  
 @ Figures adjusted according to computer tabulations for 1976-1983.

TABLE 9 VITAL STATISTICS - HONG KONG (Rate)

Year	Crude* Birth Rate (1)	Crude* Death Rate (2)	Late Foetal Mort. (3)	Early# Neo. Mort. (4)	Late# Neo. Mort. (5)	Post# Neo. Mort. (6)	Peri-# Natal Mort. (7)	Neo-# Natal Mort. (8)=(4)+(5)	Infant* Mort. (9)=(4)+(5)+(6)	Maternal Mort. (10)
1956	37.0	7.4	10.1	13.5	10.7	36.7	23.4	24.2	60.9	0.90
1957	35.8	7.1	12.6	13.5	10.3	31.8	25.9	23.8	55.6	1.06
1958	37.4	7.2	12.0	13.3	10.1	30.9	25.1	23.4	54.3	0.85
1959	35.2	6.8	13.1	12.8	8.5	27.1	25.7	21.3	48.3	0.73
1960	36.0	6.2	15.0	11.8	9.1	20.6	26.6	20.9	41.5	0.49
1961	34.3 (35.0)	5.9 (6.1)	15.2	11.3	9.7	16.7	26.3	21.0	37.7	0.45
1962	33.9 (34.0)	6.1 (6.3)	13.7	11.3	9.9	15.7	24.9	21.2	36.9	0.48
1963	33.7 (33.5)	5.8 (6.0)	14.0	10.5	8.4	14.1	24.3	18.9	33.0	0.29
1964	31.0 (30.7)	5.2 (5.3)	13.5	10.3	6.3	9.9	23.6	16.6	26.4	0.38
1965	28.4 (28.1)	4.9 (5.0)	13.2	10.0	5.3	8.5	23.0	15.2	23.7	0.33
1966	25.5 (25.3)	5.2 (5.3)	13.3	10.9	4.4	9.5	24.1	15.3	24.9	0.43
1967	23.7 (23.7)	5.3 (5.4)	11.2	10.9	5.0	9.8	21.9	15.9	25.6	0.30
1968	21.8 (21.7)	5.1 (5.1)	9.9	10.2	4.9	8.0	20.0	15.0	23.0	0.14
1969	20.5 (21.3)	4.8 (5.0)	9.5	10.2	4.7	6.9	19.6	14.9	21.8	0.15
1970	19.6 (20.0)	5.2 (5.1)	9.3	9.5	3.3	6.9	18.7	12.7	19.6	0.19
1971	19.0 (19.7)	5.0 (5.0)	8.5	9.3	3.3	5.7	17.7	12.6	18.4 (17.7)	0.14
1972	19.2 (19.5)	5.1 (5.2)	9.2	9.4	2.2	5.9	18.5	11.6	17.5 (17.4)	0.20
1973	19.0 (19.5)	5.1 (5.0)	8.4	9.0	2.0	5.8	17.4	11.0	16.8 (16.4)	0.10
1974	19.0 (19.3)	5.1 (5.1)	7.5	8.8	2.2	6.4	16.2	11.0	17.4 (16.8)	0.16
1975	17.8 (18.2)	4.8 (4.9)	7.2	8.6	1.7	4.7	15.7	10.3	15.0 (14.9)	0.03
1976	17.2 (17.7)	5.2 (5.1)	6.8	7.4	1.7	5.3	14.1	9.1	14.3 (13.7)	0.18
1977	17.5 (17.7)	5.2 (5.2)	6.7	7.2	1.8	4.9	13.8	8.9	13.9 (13.5)	0.16
1978	17.2 (17.6)	5.0 (5.2)	5.4	6.8	1.5	3.5	12.2	8.3	11.8 (11.8)	0.06
1979	16.8 (17.0)	5.4 (5.2)	4.7	6.9	1.5	4.8	11.6	8.4	13.3 (12.3)	0.08
1980	17.0 (17.1)	5.2 (5.0)	5.6	6.2	1.6	4.0	11.8	7.8	11.8 (11.2)	0.05
1981	16.9 (16.9)	4.8 (4.8)	5.4	5.4	1.2	3.1	10.8	6.6	9.7 (9.7)	0.08
1982	16.4 (16.5)	4.9 (4.8)	5.1	5.6	1.3	3.0	10.6	7.0	9.9 (9.9)	0.01
1983	15.4 (15.7)	5.0 (4.9)	4.7	5.7	1.3	3.1	10.3	7.0	10.1 (9.9)	0.07

( (1) &amp; (2) : per 1 000 population )

( Rates : (4), (5), (6), (8) &amp; (9) : per 1 000 live births )

( (3), (7) &amp; (10) : per 1 000 total births )

# Figures adjusted according to computer tabulations for 1976-1983.

\* Figures in brackets were calculated by using adjusted births &amp; deaths figures for 1961-1968 and known births &amp; deaths for 1969-1983.

TABLE 10 HONG KONG DEATH RATES 1969 TO 1983 (Deaths per 1 000 population)

Rate	Year	1969	1970	1971	1972	1973	1974	1975	1976	1977	1978	1979	1980	1981	1982	1983
Standardised* Death Rate		11.55	12.04	11.32	11.35	10.65	10.44	9.87	10.68	10.40	9.70	10.12	9.59	8.84	8.58	8.56
Crude Death Rate		4.85	5.24	5.01	5.14	5.07	5.10	4.82	5.22	5.20	4.97	5.37	5.16	4.85	4.87	4.98
Age Specific Death Rate	0	22.08	19.86	18.65	17.51	16.58	17.33	14.34	14.31	13.78	11.87	13.06	12.06	9.96	9.65	9.63
	1 - 4	0.94	1.18	0.95	0.95	1.07	1.10	0.77	0.84	0.78	0.62	1.01	0.69	0.54	0.42	0.55
	5 - 9	0.34	0.45	0.41	0.44	0.39	0.39	0.39	0.41	0.32	0.23	0.34	0.29	0.22	0.24	0.19
	10 - 14	0.32	0.42	0.36	0.35	0.38	0.36	0.28	0.32	0.33	0.27	0.30	0.29	0.32	0.26	0.25
	15 - 19	0.55	0.71	0.59	0.65	0.65	0.54	0.45	0.57	0.46	0.37	0.51	0.47	0.40	0.40	0.39
	20 - 24	0.83	1.06	0.87	0.99	0.98	0.95	0.74	0.80	0.73	0.61	0.87	0.81	0.59	0.58	0.56
	25 - 29	1.06	1.27	1.26	1.12	1.37	1.18	0.91	1.02	1.01	0.78	1.12	1.00	0.81	0.72	0.61
	30 - 34	1.41	1.75	1.54	1.49	1.66	1.73	1.24	1.60	1.17	1.11	1.30	1.25	1.02	0.93	0.78
	35 - 39	1.98	2.19	2.08	2.13	2.03	1.81	1.61	1.84	1.87	1.56	1.73	1.65	1.40	1.31	1.19
	40 - 44	3.11	3.51	3.28	3.22	3.20	3.08	2.89	2.88	2.80	2.23	2.73	2.39	2.29	2.39	2.16
	45 - 49	4.94	5.35	4.73	4.82	4.66	4.59	4.14	4.65	4.32	3.93	4.37	4.11	3.83	3.71	3.34
	50 - 54	8.15	8.14	8.07	7.42	7.90	7.35	6.83	7.12	6.48	6.66	6.65	6.23	5.92	6.05	5.94
	55 - 59	13.24	14.37	12.67	10.57	11.36	10.98	10.91	10.97	10.79	10.24	10.87	10.72	9.57	9.20	9.28
	60 - 64	19.51	20.45	19.40	19.99	19.71	18.70	17.15	18.10	17.94	15.83	16.59	15.32	14.80	15.16	15.57
	65 - 69	28.31	30.51	28.64	27.66	26.47	26.55	25.92	28.12	27.80	26.14	26.92	25.47	23.57	22.48	22.62
	70 - 74	37.73	42.82	41.67	41.75	38.69	38.69	36.41	39.99	38.18	37.54	38.06	36.01	34.35	34.57	36.62
	75 - 79	67.03	66.91	61.65	60.57	53.53	53.54	53.73	61.01	57.98	53.26	56.12	53.69	51.49	48.92	47.07
	80+	112.69	110.43	106.41	111.74	104.89	103.62	99.87	106.01	109.82	103.92	105.57	102.22	93.98	90.00	91.44

\*Basing on population figures for England and Wales 1976 (Reference : United Nations Demographic Year-Book 1977)

TABLE 11 MAJOR CAUSES OF INFANT DEATHS 1979 TO 1983

Disease Group	Detailed List No. 9th Revision (1975)	1979	1980	1981	1982	1983
Meningitis	320,322	15	8	8	15	8
Bronchitis	466, 490-491	5	3	1	3	3
Viral pneumonia	480	5	4	3	4	1
Pneumococcal pneumonia	481	5	2	1	-	-
Other bacterial pneumonia	482	-	1	-	-	-
Pneumonia due to other specified organism	483	-	-	-	-	-
Bronchopneumonia, organism unspecified	485	77	64	29	28	50
Pneumonia, organism specified	486	50	39	34	21	21
Gastroenteritis, colitis & other diarrhoeal disease	558, 009	32	14	13	6	1
Congenital anomalies	740-759	277	249	221	240	254
Obstetric complications & birth trauma	761-763, 767	16	3	6	2	6
Intrauterine hypoxia and birth asphyxia	768	110	113	103	86	73
Respiratory distress syndrome	769	143	161	115	123	107
Other respiratory conditions of fetus and newborn	770	63	69	58	64	71
Slow fetal growth and fetal malnutrition	764	-	-	-	-	-
Disorders relating to short gestation and unspecified low birthweight	765	95	50	82	61	76

TABLE 11 (Cont'd)

Disease Group	Detailed List No. 9th Revision (1975)	1979	1980	1981	1982	1983
Fetus or newborn affected by maternal conditions which may be unrelated to present pregnancy	760	-	-	-	-	-
Disorders relating to long gestation and high birthweight	766	-	-	-	-	-
Infections specific to perinatal period	771	7	16	6	16	20
Fetal and neonatal haemorrhage	772	45	40	38	66	22
Haemolytic disease of fetus or newborn due to isoimmunization and other perinatal jaundice	773-774	28	13	6	3	6
Endocrine and metabolic disturbances specific to the fetus and newborn	775	1	2	1	2	-
Haematological disorders of fetus and newborn	776	3	8	7	9	5
Perinatal disorders of digestive system	777	13	20	6	4	9
Conditions involving the integument and temperature regulation of fetus and newborn	778	1	22	19	27	29
Other and ill-defined conditions originating in the perinatal period	779	1	-	-	-	-
Others	Residues of 001-999	100	107	89	73	68
All Causes	001-999	1 092	1 008	846	853	830

Notes : Figures for the years 1974-1978 have been suppressed as some of the data cannot be regrouped according to the 9th Revision (1975)

TABLE 12 MAJOR CAUSES OF MATERNAL DEATHS 1961, 1973 AND 1979 TO 1983

Detailed list no. according to 9th (1975) Revision	Pregnancy with abortive outcome other than spontaneous or legally induced abortion	Toxaemia of pregnancy	Haemorrhage of pregnancy & childbirth	Major puerperal infection	Ectopic pregnancy	Others	Total
Year							
1961*	4	10	17	2	3	14	50
1973#	1	2	1	-	1	3	8
1979	1	-	1	2	3	-	7
1980	-	3	1	-	-	-	4
1981	-	1	3	-	1	2	7
1982	-	-	1	-	-	-	1
1983	-	2	2	-	-	2	6

\* Data regrouped according to ICD 8th Revision (1965)

# Data regrouped according to ICD 9th Revision (1975)

TABLE 13 PROPORTIONATE MORTALITY BY DISEASE GROUP 1961, 1973 AND 1979 TO 1983  
(As Percentage of Total Deaths)

Disease Group	Detailed List No. 9th Revision	1961*	1973#	1979	1980	1981	1982	1983
Infective and parasitic	001 - 139	16.2	6.5	3.2	3.1	3.1	3.1	3.0
Neoplasms	140 - 239	12.3	21.4	23.7	24.8	26.4	26.8	27.3
Endocrine, nutritional, metabolic, immunity disorders and blood	240 - 289	0.9	1.4	1.6	1.5	1.3	0.9	1.0
Nervous system, sense organs and mental disorders	290 - 389	0.8@	0.7	0.7	0.7	0.7	0.8	0.9
Circulatory system	390 - 459	18.2	25.1	29.3	28.9	28.9	29.3	29.3
Respiratory system	460 - 519	16.3	15.8	15.6	15.3	15.8	15.8	16.9
Digestive system	520 - 579	7.7	5.3	4.0	4.3	4.3	4.6	4.3
Genitourinary system	580 - 629	2.0	3.0	3.5	3.8	3.9	4.1	4.0
Pregnancy, childbirth and puerperium	630 - 676	0.3	+	+	+	+	+	+
Skin, subcutaneous tissue and musculo-skeletal system	680 - 739	0.2	0.3	0.2	0.2	0.2	0.2	0.2
Congenital anomalies and conditions originating in the perinatal period	740 - 779	8.8	4.2	3.2	3.1	2.8	2.9	2.8
Symptoms, signs and ill-defined conditions	780 - 799	10.4	7.4	7.1	6.3	4.8	4.2	3.9
Injury and poisoning	800 - 999	5.9	8.9	7.9	8.0	7.8	7.3	6.4

@ Excluding Cerebrovascular Disease (formerly Vascular Lesion Affecting Central Nervous System under the Nervous System and Sense Organs) : 7.5% in 1961

# Data regrouped according to I.C.D. 9th Revision (1975)

\* Data regrouped according to I.C.D. 8th Revision (1965)

+ Denote less than 0.05

TABLE 14 THE TEN LEADING CAUSES OF DEATH BY AGE AND SEX 1983

Rank	Cause of Death	Detailed List No. 9th Revision	Sex	Age Group							
				All ages	0	1-4	5-14	15-44	45-64	65+	Unknown
	All causes	001-999	M F X T	14 864 11 606 15 26 485	449 379 2 830	94 94 - 188	102 81 - 183	1 425 713 - 2 138	5 247 2 446 - 7 693	7 529 7 888 - 15 417	18 5 13 36
1	Malignant neoplasms	140-208	M F T	4 539 2 687 7 226	2 1 3	11 7 18	22 9 31	406 212 618	2 175 1 004 3 179	1 923 1 453 3 376	- 1 1
2	Heart diseases, including hypertensive heart disease	390-429	M F T	2 253 2 029 4 282	1 - 1	1 3 4	3 3 6	78 57 135	717 374 1 091	1 453 1 591 3 044	- 1 1
3	Cerebrovascular disease	430-438	M F T	1 620 1 689 3 309	1 1 2	- 1 1	- 3 3	52 31 83	551 335 886	1 014 1 318 2 332	2 - 2
4	Pneumonia, all forms	480-486	M F X T	1 092 1 105 1 2 198	34 38 - 72	12 13 - 25	5 7 - 12	58 25 - 83	273 89 - 362	709 933 - 1 642	1 - 1 2
5	Injury and poisoning	800-999	M F T	1 102 598 1 700	2 4 6	29 22 51	47 34 81	530 204 734	306 123 429	187 211 398	1 - 1
6	Nephritis, nephrotic syndrome and nephrosis	580-589	M F T	437 454 891	2 2 4	1 - 1	- - -	45 31 76	153 127 280	235 294 529	1 - 1

TABLE 14 (Cont'd)

Rank	Cause of Death	Detailed List No. 9th Revision	Sex	Age Group							
				All ages	0	1-4	5-14	15-44	45-64	65+	Unknown
7	Bronchitis, chronic and unspecified, emphysema & asthma	490-493	M F T	401 230 631	- - -	- - -	1 2 3	24 9 33	143 45 188	233 174 407	- - -
8	Tuberculosis (including late effects of tuberculosis)	010-018, 137	M F T	350 96 446	- - -	2 - 2	- - -	22 12 34	138 33 171	187 51 238	1 - 1
9	Certain conditions originating in the perinatal period	760-779	M F X T	249 174 1 424	249 174 1 424	- - - -	- - - -	- - - -	- - - -	- - - -	- - - -
10	Chronic liver diseases and cirrhosis	571	M F T	260 89 349	- - -	- - -	1 - 1	30 3 33	153 40 193	76 46 122	- - -
	Congenital anomalies	740-759	M F X T	153 159 1 313	130 123 1 254	9 19 - 28	4 5 - 9	9 11 - 20	1 - - 1	- - - -	- - - -
	Diabetes mellitus	250	M F T	101 114 215	- - -	- - -	- - -	6 5 11	27 29 56	68 80 148	- - -
	All other causes	Residue of 001-999	M F X T	2 307 2 182 12 4 501	28 36 - 64	29 29 - 58	19 18 - 37	165 113 - 278	610 247 - 857	1 444 1 736 - 3 180	12 3 12 27

Note : X indicates unknown sex

TABLE 14(a) SUPPLEMENTARY CLASSIFICATION OF EXTERNAL CAUSES OF INJURY AND POISONING 1983

External Cause of Death	Detailed List No. 9th Revision	Sex	Age Group							Unknown
			All ages							
			0	1-4	5-14	15-44	45-64	65+		
All accidents, poisonings and violence	E800-E999	M	1 119	30	47	535	311	193	1	
		F	605	22	34	207	124	214	-	
		T	1 724	52	81	742	435	407	1	
Transport accidents	E800-E848	M	264	4	13	141	48	57	-	
		F	155	4	11	40	33	66	-	
		T	419	8	24	181	81	123	-	
Accidental poisonings	E850-E869	M	45	-	-	26	14	5	-	
		F	11	1	1	9	-	-	-	
		T	56	1	1	35	14	5	-	
Other accidents, misadventures & adverse effect	E870-E949	M	324	24	30	146	77	46	-	
		F	122	16	17	27	19	41	-	
		T	446	40	47	173	96	87	-	
Suicide and self-inflicted injury	E950-E959	M	270	-	1	106	106	57	-	
		F	188	-	3	68	43	74	-	
		T	458	-	4	174	149	131	-	
Homicide and injury purposely inflicted by other persons	E960-E969	M	53	2	3	30	14	4	-	
		F	22	1	1	10	6	3	-	
		T	75	3	4	40	20	7	-	
Other violence	E970-E999	M	163	-	-	86	52	24	1	
		F	107	-	1	53	23	30	-	
		T	270	-	1	139	75	54	1	

TABLE 15 LEADING CAUSES OF DEATH 1961, 1973 AND 1983 (Ranking According to 1983 Data)

Cause of Death	Number of Deaths			Percentage of Deaths from all causes			Rate per 100 000 population		
	1961*	1973#	1983	1961*	1973#	1983	1961*	1973#	1983
	<u>All ages</u>								
<u>All causes</u>	18 738	21 360	26 485	100.0	100.0	100.0	591.5	507.1	498.5
1. Malignant neoplasms	2 280	4 539	7 226	12.2	21.2	27.3	72.0	107.7	136.0
2. Heart diseases, including hypertensive heart disease	1 866	3 112	4 282	9.9	14.6	16.2	58.9	73.9	80.6
3. Cerebrovascular disease	1 401	1 978	3 309	7.5	9.3	12.5	44.2	47.0	62.3
4. Pneumonia, all forms	2 665	2 238	2 198	14.2	10.5	8.3	84.1	53.1	41.4
5. Injury and poisoning	1 100	1 901	1 700	5.9	8.9	6.4	34.7	45.1	32.0
All other causes	9 426	7 592	7 770	50.3	35.5	29.3	297.6	180.2	146.2
<u>0 years</u>									
<u>All causes</u>	4 098	1 345	830	100.0	100.0	100.0	3 840.7	1 658.4	962.9
1. Congenital anomalies	157	283	254	3.8	21.0	30.6	147.1	349.0	294.7
2. Hypoxia, birth asphyxia & other respiratory conditions	142	128	251	3.4	9.5	30.2	133.1	157.8	291.2
3. Haemolytic disease of fetus or newborn, perinatal jaundice & other causes of perinatal morbidity	204	64	91	5.0	4.8	11.0	191.2	78.9	105.6
4. Immaturity	1 142	326	76	27.9	24.2	9.1	1 070.3	402.0	88.2
5. Pneumonia, all forms	1 166	258	72	28.5	19.2	8.7	1 092.8	318.1	83.5
All other causes	1 287	286	86	31.4	21.3	10.4	1 206.2	352.7	99.8

TABLE 15 (Cont'd)

Cause of Death	Number of Deaths			Percentage of Deaths from all causes			Rate per 100 000 population		
	1961*	1973#	1983	1961*	1973#	1983	1961*	1973#	1983
<u>1-4 years</u>									
All causes	1 805	337	188	100.0	100.0	100.0	427.5	107.3	55.0
1. Injury and poisoning	107	92	51	5.9	27.3	27.1	25.3	29.3	14.9
2. Diseases of nervous system	18	18	29	1.0	5.3	15.4	4.3	5.7	8.5
3. Congenital anomalies	14	25	28	0.8	7.4	14.9	3.3	8.0	8.2
4. Pneumonia, all forms	603	97	25	33.4	28.8	13.3	142.8	30.9	7.3
5. Malignant neoplasms	18	28	18	1.0	8.3	9.6	4.3	8.9	5.3
All other causes	1 045	77	37	57.9	22.9	19.7	247.5	24.5	10.8
<u>5-14 years</u>									
All causes	587	393	183	100.0	100.0	100.0	77.7	38.4	21.7
1. Injury and poisoning	177	161	81	30.2	41.0	44.3	23.4	15.7	9.6
2. Malignant neoplasms	40	55	31	6.8	14.0	16.9	5.3	5.4	3.7
3. Diseases of nervous system	29	25	20	4.9	6.4	10.9	3.8	2.4	2.4
4. Pneumonia, all forms	83	46	12	14.1	11.7	6.6	11.0	4.5	1.4
5. Congenital anomalies	7	10	9	1.2	2.5	4.9	0.9	1.0	1.1
All other causes	251	96	30	42.8	24.4	16.4	33.2	9.4	3.6

TABLE 15 (Cont'd)

Cause of Death	Number of Deaths			Percentage of Deaths from all causes			Rate per 100 000 population		
	1961*	1973#	1983	1961*	1973#	1983	1961*	1973#	1983
<u>15-44 years</u>									
All causes	2 665	2 709	2 138	100.0	100.0	100.0	201.6	147.5	79.3
1. Injury and poisoning	465	850	734	17.4	31.3	34.3	35.2	46.3	27.2
2. Malignant neoplasms	512	623	618	19.2	23.0	28.9	38.7	33.9	22.9
3. Heart diseases, including hypertensive heart disease	246	220	135	9.2	8.1	6.3	18.6	12.0	5.0
4. Cerebrovascular Diseases	74	85	83	2.8	3.2	3.9	5.6	4.6	3.1
5. Pneumonia, all forms	100	121	83	3.8	4.5	3.9	7.6	6.6	3.1
All other causes	1 268	810	485	47.6	29.9	22.7	95.9	44.1	18.0
<u>45-64 years</u>									
All causes	5 041	7 278	7 693	100.0	100.0	100.0	1 089.9	972.5	796.4
1. Malignant neoplasms	1 204	2 359	3 179	23.9	32.4	41.3	260.3	315.2	329.1
2. Heart diseases, including hypertensive heart disease	762	1 075	1 091	15.1	14.8	14.2	164.8	143.6	112.9
3. Cerebrovascular disease	569	653	886	11.3	9.0	11.5	123.0	87.3	91.7
4. Injury and poisoning	216	481	429	4.3	6.6	5.6	46.7	64.3	44.4
5. Pneumonia, all forms	278	479	362	5.5	6.6	4.7	60.1	64.0	37.5
All other causes	2 012	2 231	1 746	39.9	30.6	22.7	435.0	298.1	180.7

TABLE 15 (Cont'd)

Cause of Death	Number of Deaths			Percentage of Deaths from all causes			Rate per 100 000 population		
	1973#		1983	1973#		1983	1973#		1983
	1961*	1973#	1983	1961*	1973#	1983	1961*	1973#	1983
<u>65-years and over</u>									
All causes	4 524	9 289	15 417	100.0	100.0	100.0	4 519.5	4 461.6	4 053.9
1. Malignant neoplasms	503	1 468	3 376	11.1	15.8	21.9	502.5	705.1	887.7
2. Heart diseases, including hypertensive heart disease	817	1 790	3 044	18.1	19.3	19.7	816.2	859.8	800.4
3. Cerebrovascular disease	747	1 223	2 332	16.5	13.1	15.1	746.3	587.4	613.2
4. Pneumonia, all forms	435	1 236	1 642	9.6	13.3	10.7	434.6	593.7	431.8
5. Nephritis, nephrotic syndrome and nephrosis	88	90	529	1.9	1.0	3.4	87.9	43.2	139.1
All other causes	1 934	3 482	4 494	42.8	37.5	29.2	1 932.1	1 672.4	1 181.7

\* Data regrouped according to ICD 8th Revision (1965)

# Data regrouped according to ICD 9th Revision (1975)

TABLE 16 NUMBER OF CANCER DEATHS BY AGE AND SEX 1983

T-List	Detailed List Number 9th Revision	Cause Group	Sex	ALL Ages	0-9	10-	20-	30-	35-	40-	45-	50-	55-	60-	65-	70-	75+	Unk.
T080 (part)	147	Malignant neoplasm of nasopharynx	M F	370 102	- -	1 -	9 3	20 1	21 6	40 7	52 16	58 22	59 12	51 12	31 6	18 9	10 8	- -
T090	150	Malignant neoplasm of oesophagus	M F	281 78	- -	- -	- -	1 1	- -	4 -	11 2	31 5	65 9	56 13	49 10	42 14	22 24	- -
T091	151	Malignant neoplasm of stomach	M F	309 212	- -	- -	3 2	2 6	3 7	6 6	11 6	31 19	39 16	52 27	57 26	59 25	46 71	- 1
T093	153	Malignant neoplasm of colon	M F	217 184	- -	1 -	7 6	5 3	1 -	6 2	11 14	13 15	21 16	35 22	32 28	43 22	42 56	- -
T094	154	Malignant neoplasm of rectum, sigmoid junction and anus	M F	146 108	- -	- 1	4 3	6 3	2 2	5 1	5 3	12 5	21 12	21 14	31 13	21 19	18 32	- -
T095	155	Malignant neoplasm of liver and intrahepatic bile ducts	M F	783 232	1 -	1 -	15 4	17 2	23 6	48 5	81 7	110 18	109 16	119 35	109 31	84 36	66 72	- -
T096	157	Malignant neoplasm of pancreas	M F	96 78	- -	- -	- -	1 1	1 -	2 1	4 3	10 8	9 8	22 8	18 14	19 14	10 21	- -
T100	161	Malignant neoplasm of larynx	M F	84 20	- -	- -	- -	- -	- -	3 -	4 -	8 -	13 3	18 5	13 3	12 3	13 6	- -
T101	162	Malignant neoplasm of trachea, bronchus and lung	M F	1370 632	- -	1 -	2 2	4 1	14 1	19 6	57 16	121 29	197 62	276 109	285 94	212 121	182 191	- -

TABLE 16 (Cont'd)

T-List	Detailed List Number 9th Revision	Cause Group	Sex	All Ages	0-9	10-	20-	30-	35-	40-	45-	50-	55-	60-	65-	70-	75+	Unk.
T110	170	Malignant neoplasm of bone and articular cartilage	M	31	1	4	1	1	-	2	2	3	2	6	5	4	-	-
			F	25	-	3	2	-	-	1	2	1	1	4	3	3	5	-
T112	172	Malignant melanoma of skin	M	4	-	-	-	-	-	-	-	1	-	1	-	1	1	-
			F	3	-	-	-	-	-	-	-	2	-	-	-	-	-	-
T113	173	Other malignant neoplasm of skin	M	11	-	1	-	-	-	-	1	-	3	-	2	-	4	-
			F	6	-	-	-	-	-	-	-	-	-	-	1	1	4	-
T114	174	Malignant neoplasm of female breast	F	219	-	-	6	10	7	11	16	28	27	33	31	20	30	-
T120	180	Malignant neoplasm of cervix uteri	F	140	-	-	-	3	4	6	13	21	31	18	14	11	19	-
T122	179, 182	Malignant neoplasm of uterus, other and unspecified	F	32	-	-	1	-	-	-	1	6	5	5	1	5	8	-
T123	183	Malignant neoplasm of ovary and other uterine adnexa	F	78	-	-	3	2	-	3	5	7	13	12	20	5	8	-
T124	185	Malignant neoplasm of prostate	M	65	-	-	-	-	-	2	2	1	4	8	11	10	27	-
T125	186	Malignant neoplasm of testis	M	3	-	-	1	-	-	-	-	-	-	-	-	1	1	-

TABLE 16 (Cont'd)

T-List	Detailed List Number 9th Revision	Cause Group	Sex	All Ages	0-9	10-	20-	30-	35-	40-	45-	50-	55-	60-	65-	70-	75+	Unk.
T126	188	Malignant neoplasm of bladder	M	92	-	-	-	-	2	-	1	5	7	19	16	19	23	-
			F	45	-	-	-	-	-	-	2	2	1	4	4	9	23	-
T131 (part)	193	Malignant neoplasm of thyroid gland	M	9	-	-	-	-	1	-	1	2	-	4	-	-	1	-
			F	29	-	-	-	-	-	-	2	2	1	2	7	3	12	-
T140	201	Hodgkin's disease	M	5	-	-	-	-	-	-	1	3	1	-	-	-	-	-
			F	6	-	-	-	-	1	-	-	1	1	1	-	-	2	-
T141 (part)	200, 202	Non-Hodgkin's lymphoma	M	92	2	3	8	3	5	3	7	8	12	13	13	8	7	-
			F	51	2	-	2	3	1	2	1	4	6	7	6	7	10	-
T141 (part)	203	Multiple myeloma and immunoproliferative neoplasms	M	15	-	-	-	-	-	-	1	-	3	1	4	2	4	-
			F	14	-	-	-	-	-	-	-	1	2	-	3	3	5	-
T142	204-208	Leukaemia	M	84	7	7	11	2	5	4	5	5	11	14	6	4	3	-
			F	70	4	9	9	1	3	3	5	4	4	9	3	5	11	-
	140-146, 148-149, 152, 156, 158-160, 163-165, 171, 175, 181, 184, 187, 189-192, 194-199	Malignant neoplasm of other and unspecified sites	M	472	13	2	12	8	9	22	21	57	59	67	81	64	57	-
			F	323	4	4	10	6	8	6	11	23	32	38	44	62	75	-
T080-T142	140-208	All forms of cancer	M	4539	24	21	73	70	87	166	278	479	635	783	763	623	537	-
			F	2687	10	17	53	43	46	60	125	223	278	378	362	397	694	1
			T	7226	34	38	126	113	133	226	403	702	913	1125	1020	1231	1	

TABLE 17 MAIN CAUSES OF DEATH FROM CANCER IN HONG KONG 1974 TO 1983

CAUSE OF DEATH Detailed List Number 9th Revision	1974#		1975#		1976#		1977#		1978#		1979		1980		1981		1982		1983		
	D	R	D	R	D	R	D	R	D	R	D	R	D	R	D	R	D	R	D	R	
ALL FORMS OF CANCER (140-208)	M 2788 F 1895	126.8 89.3	3022 2083	134.6 96.9	3188 2180	140.2 100.5	3396 2256	147.2 102.4	3597 2381	152.9 106.1	3774 2429	149.6 103.1	4001 2561	152.3 104.1	4214 2596	154.5 103.6	4539 2687	164.3 105.4			
Malignant neoplasm of nasopharynx (147)	M 304 F 132	13.8 6.2	339 120	15.1 5.6	334 102	14.7 4.7	325 110	14.1 5.0	302 120	12.8 5.3	360 126	14.3 5.3	349 118	13.3 4.9	361 121	13.2 4.8	370 102	13.4 4.0			
Malignant neoplasm of oesophagus (150)	M 189 F 45	8.6 2.1	182 63	8.1 2.9	222 75	9.8 3.5	200 67	8.7 3.0	227 64	9.6 2.9	264 66	10.5 2.8	287 61	10.9 2.5	272 61	10.0 2.4	281 78	10.2 3.1			
Malignant neoplasm of stomach (151)	M 256 F 162	11.6 7.6	248 158	11.0 7.3	279 156	12.3 7.2	281 161	12.2 7.3	274 177	11.6 7.9	286 167	11.3 7.1	295 167	11.2 6.9	290 172	10.6 6.9	309 212	11.2 8.3			
Malignant neoplasm of colon (153)	M 121 F 121	5.5 5.7	121 127	5.4 5.9	130 136	5.7 6.3	136 114	5.9 5.2	150 143	6.4 6.4	136 154	5.4 6.5	147 161	5.6 6.7	187 183	6.9 7.3	217 184	7.9 7.2			
Malignant neoplasm of rectum, rectosigmoid junction and anus (154)	M 66 F 60	3.0 2.8	84 54	3.7 2.5	75 73	3.3 3.4	87 76	3.8 3.5	124 81	5.3 3.6	118 107	4.7 4.5	103 93	3.9 3.9	107 108	3.9 4.3	146 108	5.3 4.2			
Malignant neoplasm of liver and intrahepatic bile ducts (155)	M 570 F 165	25.9 7.8	606 169	27.0 7.9	508 150	22.3 6.9	380 125	16.5 5.7	650 195	27.6 8.7	691 178	27.4 7.6	689 204	26.2 8.5	731 198	25.3 7.9	783 232	28.3 9.1			
Malignant neoplasm of trachea, bronchus and lung (162)	M 676 F 397	30.7 18.7	758 474	33.8 22.0	803 532	35.3 24.5	919 529	39.8 24.0	999 562	42.5 25.0	1062 500	42.1 25.5	1223 583	46.6 24.2	1263 699	46.3 27.9	1370 632	49.6 24.8			
Malignant neoplasm of breast (174 & 175)	M 1 F 169	* 8.0	1 193	* 9.0	3 193	0.1 8.9	2 195	0.1 8.9	1 210	- 9.4	1 205	* 8.7	1 190	* 7.9	- 227	- 9.2	2 202	0.1 8.1	1 219	* 8.6	
Malignant neoplasm of cervix uteri (180)	F 153	7.2	145	6.7	141	6.5	180	8.2	124	5.5	146	6.2	141	5.8	155	6.3	140	5.5			

# Data regrouped according to ICD 9th Revision (1975).

\* Denote less than 0.05.

D - No. of Deaths.

R - Mortality Rate per 100 000 population.

TABLE 18 NEW CASES OF CANCER NOTIFIED TO THE CANCER REGISTRY BY AGE AND SEX 1981

T-List	Detailed List Number 9th Revision	Cause Group	Sex	All Ages	0-9	10-	20-	30-	35-	40-	45-	50-	55-	60-	65-	70-	75+	Unk.
T080 (part)	147	Malignant neoplasm of nasopharynx	M F	673 267	- -	5 3	28 21	60 24	62 22	93 36	113 40	102 26	87 27	62 34	28 16	25 7	5 10	3 1
T090	150	Malignant neoplasm of oesophagus	M F	392 100	- -	- 1	4 -	2 -	3 -	11 4	23 5	62 7	83 17	79 14	67 17	28 12	30 23	- -
T091	151	Malignant neoplasm of stomach	M F	401 250	- -	1 -	2 6	2 7	11 5	9 2	25 8	37 25	52 25	69 36	79 40	69 26	44 69	1 1
T093	153	Malignant neoplasm of colon	M F	318 352	- -	4 1	7 5	11 6	5 1	11 14	23 18	29 30	37 42	54 45	48 54	43 46	46 87	- 3
T094	154	Malignant neoplasm of rectum, rectosigmoid junction and anus	M F	271 268	- -	2 -	8 10	9 4	3 6	11 12	12 19	33 20	37 29	49 27	38 35	35 35	31 70	3 1
T095	155	Malignant neoplasm of liver and intrahepatic bile ducts	M F	729 186	1 -	1 1	14 4	20 1	40 5	54 4	79 13	105 20	135 23	95 27	61 29	73 25	45 32	6 2
T096	157	Malignant neoplasm of pancreas	M F	88 61	- -	- -	- -	1 2	4 -	4 -	2 2	16 8	11 6	13 11	9 9	9 7	19 16	- -
T100	161	Malignant neoplasm of larynx	M F	199 35	- -	- -	2 -	1 -	2 -	2 -	10 -	29 5	32 6	39 8	33 5	32 8	16 3	1 -
T101	162	Malignant neoplasm of trachea, bronchus and lung	M F	1265 602	1 -	1 -	7 3	13 2	15 6	31 13	67 21	138 44	190 82	256 103	234 95	198 86	113 144	1 3

TABLE 18 (Cont'd)

T-List	Detailed List Number 9th Revision	Cause Group	Sex	All Ages	0-9	10-	20-	30-	35-	40-	45-	50-	55-	60-	65-	70-	75+	Unk.
T110	170	Malignant neoplasm of bone and articular cartilage	M F	29 15	1	7	5	1	1	1	2	2	2	2	2	2	1	-
T112	172	Malignant melanoma of skin	M F	26 20	-	-	3	-	1	-	3	2	8	1	1	3	4	-
T113	173	Other malignant neoplasm of skin	M F	100 95	-	1	1	2	1	3	13	9	16	13	11	10	14	6
T114	174	Malignant neoplasm of female breast	F	716	-	-	26	29	29	51	73	95	104	79	84	71	72	3
T120	180	Malignant neoplasm of cervix uteri	F	490	1	-	10	20	27	26	65	78	72	54	53	41	42	1
T122	179, 182	Malignant neoplasm of uterus, other and unspecified	F	153	-	-	3	3	6	8	19	27	25	31	11	16	4	-
T123	183	Malignant neoplasm of ovary and other uterine adnexa	F	139	1	4	5	8	14	12	11	11	23	21	11	9	7	2
T124	185	Malignant neoplasm of prostate	M	110	-	-	-	-	-	-	1	2	9	16	16	21	45	-
T125	186	Malignant neoplasm of testis	M	28	4	4	7	3	-	5	2	-	-	1	2	-	-	-

TABLE 18 (Cont'd)

T-List	Detailed List Number 9th Revision	Cause Group	Sex	All Ages	0-9	10-	20-	30-	35-	40-	45-	50-	55-	60-	65-	70-	75+	Unk.
T126	188	Malignant neoplasm of bladder	M F	318 120	-	-	1	5	3	11	16	23	37	58	67	40	54	3
T131 (part)	193	Malignant neoplasm of thyroid gland	M F	36 114	-	4	4	-	5	3	4	2	1	7	2	3	1	-
T140	201	Hodgkin's disease	M F	13 14	1	2	2	2	2	1	2	-	-	1	-	-	-	-
T141 (part)	200, 202	Non-Hodgkin's lymphoma	M F	132 126	5	3	12	7	4	5	10	17	12	16	19	13	9	-
T141 (part)	203	Multiple myeloma and immunoproliferative neoplasms	M F	29 17	3	-	-	-	-	3	1	5	8	1	3	3	2	-
T142	204-208	Leukaemia	M F	155 106	31 10	25 9	18 14	7 10	7 4	6 5	14 4	12 2	6 5	8 12	13 11	2 11	6 7	- 2
T080-T142	140-146, 148-149, 152, 156, 158-160, 163-165, 171, 175, 181, 184, 187, 189-192, 194-199, 140-208	Malignant neoplasm of other and unspecified sites	M F	861 669	24 21	16 14	34 29	28 28	18 16	38 25	79 32	81 55	97 63	146 80	122 92	93 89	81 123	4 2
		All forms of cancer	M F T	6173 4915 11088	71 34 105	76 43 119	159 173 332	174 163 337	187 154 341	302 244 546	501 360 861	706 498 1204	860 594 1454	986 629 1615	855 628 1483	702 551 1253	566 817 1383	28 27 55

TABLE 19 NEW OVERSEAS CASES OF CANCER DIAGNOSED IN HONG KONG 1981

T-List	Detailed List Number 9th Revision	Cause Group	Sex	All Ages	0-9	10-	20-	30-	35-	40-	45-	50-	55-	60-	65-	70-	75+
T080 (part)	147	Malignant neoplasm of nasopharynx	M	13	-	-	-	2	3	1	2	3	2	-	-	-	-
T100	161	Malignant neoplasm of larynx	F	3	-	-	-	-	-	1	1	1	-	-	-	-	-
T101	162	Malignant neoplasm of trachea, bronchus and lung	M	1	-	-	-	-	-	-	-	-	-	-	-	1	-
T110	170	Malignant neoplasm of bone and articular cartilage	F	1	-	-	-	1	-	-	-	-	-	-	-	-	-
T113	173	Other malignant neoplasm of skin	M	1	-	-	-	1	-	-	-	-	-	-	-	-	-
T114	174	Malignant neoplasm of female breast	F	4	-	-	-	-	2	1	-	1	-	-	-	-	-
T120	180	Malignant neoplasm of cervix uteri	F	2	-	-	-	-	-	1	-	-	1	-	-	-	-
T123	183	Malignant neoplasm of ovary and other uterine adnexa	F	1	-	-	-	-	-	-	-	-	-	-	-	1	-
T131 (part)	193	Malignant neoplasm of thyroid gland	M	1	-	-	-	-	-	-	1	-	-	-	-	-	-
T141 (part)	200	Lymphosarcoma and reticulosarcoma	M	1	-	-	-	-	-	-	-	-	1	-	-	-	-
T080-T142	160, 191, 199 140-208	Malignant neoplasm of other and unspecified sites ALL forms of cancer	M F T	1 2 35	-	-	-	4	3	2	2	3	3	3	1	2	1

TABLE 20 DEATHS FROM HEART DISEASES BY AGE AND SEX 1983  
(Including Hypertensive Disease)

T-List No.	Cause (with detailed list no.)	Sex	All Ages	0-	10-	20-	30-	35-	40-	45-	50-	55-	60-	65-	70-	75+	Unk.
T250	ACUTE RHEUMATIC FEVER (390-392)	M F	1	-	1	-	-	-	-	-	-	-	-	-	-	-	-
T251	CHRONIC RHEUMATIC HEART DISEASES (393-398)	M F	95 153	-	3 2	4 4	5 5	7 7	12 12	6 8	5 12	12 14	19 21	16 17	8 19	14 32	-
T260	Diseases of mitral valve (394)	M F	32 35	-	3 1	2 1	2 3	1 3	1 7	3 -	-	4 1	6 4	5 7	2 4	5 7	-
T261	HYPERTENSIVE HEART DISEASES (402, 404)	M F	415 362	-	1 -	2 1	3 1	3 1	2 5	12 8	20 13	40 26	57 24	67 52	97 63	114 169	-
T270	OTHER HYPERTENSIVE DISEASES (401, 403, 405)	M F	59 31	-	-	-	-	1 -	-	4 1	2 2	5 1	8 3	14 7	13 4	12 12	-
T271	ACUTE MYOCARDIAL INFARCTION (410)	M F	763 562	-	-	-	3 -	3 1	7 -	21 6	47 22	74 35	136 63	158 59	144 106	170 269	1
T280	OTHER ISCHAEMIC HEART DISEASES (411-414)	M F	504 532	-	1 -	-	2 -	1 -	1 -	5 2	12 8	40 15	70 35	89 54	109 77	174 341	-
T281	DISEASES OF PULMONARY CIRCULATION (415-417)	M F	296 259	-	1 -	1 2	1 2	3 1	3 1	9 3	18 4	28 12	43 26	58 39	57 61	75 108	-
T250-T281	OTHER FORMS OF HEART DISEASES (420-429)	M F	120 130	2 2	5 5	12 6	7 2	3 3	3 -	2 -	4 1	9 6	20 3	28 6	16 18	28 78	-
T250-T281	ALL FORMS OF HEART DISEASES (390-429)	M F	2253 2029	2 3	8 7	16 12	19 10	19 13	19 18	59 28	108 62	208 109	342 175	422 234	444 348	587 1009	1

TABLE 21 INFECTIOUS DISEASES NOTIFIED 1979 TO 1983

Disease	Cases					Deaths				
	1979	1980	1981	1982	1983	1979	1980	1981	1982	1983
Amoebiasis	46	39	48	37	37	1	6	-	2	2
Bacillary Dysentery	429	437	563	550	479	3	1	3	1	1
Cerebrospinal Meningitis & Meningococcal Infections	33	29	18	16	13	7	3	1	1	1
Chickenpox	1 052	2 176	1 140	1 621	1 228	1	1	-	3	1
Cholera	4	-	3*	8#	-	1	-	-	-	-
Diphtheria	-	2	-	1	-	-	-	-	1	-
Enteric Fever : Typhoid	331	468	482	369	346	-	6	2	-	3
Paratyphoid	26	32	18	23	23	3	-	2	-	-
Food Poisoning : Outbreaks	146	102	175	215	169	-	-	2	-	-
(Persons affected)	(587)	(754)	(666)	(870)	(642)	-	1	-	-	1
Leprosy	70	60	55	57	38	1	-	2	1	-
Malaria	40	49	62	80	125	1	1	-	-	-
Measles	1 929	1 669	249	1 863	888	32	5	-	5	2
Ophthalmia Neonatorum	3	1	5	4	1	-	-	-	-	-
Poliomyelitis	-	2	3	-	1	-	-	1	-	-
Puerperal Fever	2	2	2	-	-	2	-	-	-	-
Rabies (Human)	-	2	1	-	-	-	2	1	-	-
Scarlet Fever	12	18	3	4	3	-	-	-	-	-
Tuberculosis	7 907	8 065	7 729	7 527	7 301	523	551	489	454	446
Typhus (Scrub)	3	5	6	5	3	-	-	-	-	-
Viral Hepatitis	964	1 554	1 738	1 814	1 783	44	38	26	42	28
Whooping Cough	-	12	2	1	-	-	-	-	-	-
Total	12 997	14 724	12 302	14 195	12 438	619	615	527	510	485

Remarks : No case of smallpox, plague, epidemic louse-borne typhus, yellow fever or relapsing fever was reported during the specified years.

\* Imported cases # Including 5 imported cases

TABLE 22 NOTIFICATION AND DEATH RATES OF CERTAIN INFECTIOUS DISEASES 1979 TO 1983

Disease	Notification Rate (per 100,000 population)					Death Rate (per million population)				
	1979#	1980#	1981	1982	1983	1979#	1980#	1981	1982	1983
Amoebiasis	0.94	0.77	0.93	0.71	0.70	0.20	1.19	-	0.38	0.38
Bacillary Dysentery	8.79	8.67	10.92	10.51	9.02	0.61	0.20	0.58	0.19	0.19
Cerebrospinal Meningitis & Meningococcal Infections	0.68	0.58	0.35	0.31	0.24	1.43	0.60	0.19	0.19	0.19
Diphtheria	-	0.04	-	0.02	-	-	-	-	0.19	-
Enteric Fever (Typhoid & Paratyphoid)	7.32	9.92	9.70	7.49	6.94	0.61	1.19	0.78	-	0.56
Measles	39.54	33.12	4.83	35.60	16.71	0.99	0.99	-	0.96	0.38
Tuberculosis	162.08	160.07	149.96	143.84	137.41	107.20	109.36	94.88	86.76	83.94
Viral Hepatitis	19.76	30.84	33.72	34.67	33.56	9.02	7.54	5.04	8.03	5.27

# Adjusted according to revised population figures based on the 1981 Census.

TABLE 23 PRINCIPAL INFECTIOUS DISEASES NOTIFIED BY AGE AND SEX 1983

Age Group	Tuberculosis		Viral Hepatitis		Enteric Fever		Bacillary Dysentery	
	M	F	M	F	M	F	M	F
0 - 4	32	20	21	6	19	13	86	58
5 - 9	27	21	53	38	20	15	41	29
10 - 14	32	42	119	68	18	15	12	19
15 - 19	336	295	175	101	27	22	14	13
20 - 24	674	469	251	129	32	31	17	19
25 - 29	553	399	220	84	31	26	14	16
30 - 34	351	184	141	45	10	23	13	10
35 - 39	249	97	63	29	10	6	3	3
40 - 44	261	70	44	13	2	6	8	6
45 - 49	355	95	34	16	3	3	8	8
50 - 54	434	96	31	13	1	7	8	7
55 - 59	491	121	20	12	2	3	3	5
60 - 64	411	104	16	7	4	1	6	3
65 - 69	370	96	6	4	3	4	5	7
70 - 74	272	73	8	4	1	6	5	5
75 & over	155	114	2	1	1	4	9	17
Unknown	2	-	2	2	-	-	-	1
Total	5 005	2 296	1 206	572	184	185	252	226
	7 301		1 783 (5)		369		479 (1)	

Note : Figures in brackets denote unknown sex included.

TABLE 24 MALARIA 1979 TO 1983

Year	Cases Notified				
	Imported	Induced	Indigenous	Relapsing	Total Cases
1979	39	1	-	-	40
1980	45	1	1	2	49
1981	61	-	1	-	62
1982	77	2	1	-	80
1983	94	1	30	-	125

Note :

- (1) All imported relapsing cases are grouped under 'imported cases'.
- (2) Congenital and blood transfusion cases are grouped under 'induced cases'.

Identification of Parasites

Year	P. Vivax	P. Falciparum	P. Malariae	Mixed Infection	Species Undetermined	Total
1979	23	7	8	-	2	40
1980	30	6	5	1	7	49
1981	47	7	5	-	3	62
1982	69	7	3	-	1	80
1983	103	9	6	-	7	125

TABLE 25 PROPHYLACTIC IMMUNIZATIONS 1979 TO 1983

Immunization	1979	1980	1981	1982	1983
Smallpox	75 184	21 686	1 676	1 041	578
Cholera	61 793	21 881	7 870	8 053	5 887
Diphtheria/Pertussis/Tetanus	226 249	225 090	251 384	267 477	267 365
Diphtheria/Tetanus	119 375	77 252	102 954	186 054	147 262
Typhoid					
1st Dose	24 600	23 840	25 999	8 258	829
2nd Dose	6 374	3 856	3 687	1 168	63
Booster Dose	38 781	37 651	40 508	12 663	1 097
Tuberculosis (BCG)					
Infant	82 886	86 305	87 694	86 562	84 186
Others	53 904	47 808	51 208	57 213	72 050
Poliomyelitis					
Type I for Newborn	79 364	82 525	84 094	83 823	81 528
1st Dose - Trivalent	83 749	76 246	80 750	78 844	75 670
2nd Dose - Trivalent	73 843	71 540	76 501	79 586	77 768
Booster Dose - Trivalent	196 970	135 890	131 835	229 322	193 452
Measles	68 061	59 023	65 022	70 919	76 211
Rubella	40 825	46 336	35 763	28 474	41 662

TABLE 26 TUBERCULOSIS MORTALITY 1961, 1973 AND 1979 TO 1983

Year	Total Deaths from Tuberculosis	Tuberculosis Death Rate per 100 000 Population	Tuberculosis Deaths as percentage of total registered deaths	Average Age at death from Tuberculosis
1961	1 907	60.2	10.2	43
1973	1 154	27.4	5.4	58
1979	523	10.7	2.0	61
1980	551	10.9	2.1	62
1981	489	9.5	2.0	63
1982	454	8.7	1.8	63
1983	446	8.4	1.7	63

TABLE 27 TUBERCULOSIS IN CHILDHOOD 1961, 1973 AND 1979 TO 1983

Year	Percentage* of newborns receiving BCG	Percentage of Tuberculosis Deaths under 5 years	Percentage of Tuberculosis Deaths under 1 year	Infantile Mortality from Tuberculosis (per 1 000 births)
1961	77.77	11.48	2.62	0.46
1973	94.39	0.35	0.09	0.01
1979	99.58@	0.96	0.19	0.01
1980	99.54@	0.73	0.18	0.01
1981	99.53	0.41	-	-
1982	98.94	0.22	-	-
1983	99.41	0.45	-	-

\* Percentage of newborns based on registered birth figures in 1961 and based on known birth figures since 1970.

@ Figures adjusted after 1981 Census.

TABLE 28 TUBERCULOSIS NOTIFICATIONS 1961, 1973 AND 1979 TO 1983

Year	Government Chest Clinics	Other Government Institutions	Tung Wah Group Hospitals	Other Non- Government Institutions & Private Sources	Total	Notification Rate per 100 000 population
1961	8 957	2 056	947	624	12 584	397.21
1973	5 340	556	226	2 030	8 152	193.51
1979	4 632	677	281	2 317	7 907	162.08
1980	5 228	584	252	2 001	8 065	160.07
1981	4 936	472	328	1 993	7 729	149.96
1982	4 663	594	314	1 956	7 527	143.84
1983	4 509	634	385	1 773	7 301	137.41

TABLE 29 WORK OF TUBERCULOSIS AND CHEST SERVICE 1983

Total attendances	702 950
Total patients attending (old & new)	98 266
Number of new patients	53 469
<u>Classification of new patients</u>	
I) NSD# & Unknown	32 040(59.92)
II) Diseases other than tuberculosis	8 627(16.13)
III) Non-respiratory tuberculosis	404 (0.76)
a) Meninges	6(0.01)
b) Bones and joints	39(0.07)
c) Others	359(0.68)
IV) Respiratory tuberculosis	
a) Not active and unknown activity	6 775(12.67)
b) Active	5 431(10.16)
i) By bacteriology and extent	
Negative A1	2 051(3.84)
A2	403(0.75)
A3	65(0.12)
Positive B1	1 302(2.44)
B2	953(1.78)
B3	440(0.82)
Incomplete O1	148(0.28)
O2	56(0.11)
O3	13(0.02)
ii) By previous history and treatment	
No previous history of tuberculosis	4 787(8.95)
Previously diagnosed, no treatment	4(0.01)
Previously diagnosed, with treatment	573(1.07)
Previous history not known	67(0.13)
Total with examination completed	53 277(99.64)

Note : Figures in brackets denote percent of total new patients

# Nil of significance detected

TABLE 30 EXAMINATION OF NEW CONTACTS OF TUBERCULOSIS PATIENTS 1983

Number of patients listed	7 570
Number of contacts listed	21 310
(a) Number of children with negative tuberculin/tine*	1 899
Number of children given BCG	1 888
(b) Number of contacts X-rayed	14 169 (100.00%)
<u>Results</u>	
NSD# & Unknown	13 431 (94.80%)
Diseases other than TB	131 (0.92%)
Respiratory TB	
Active A (negative by bacteriology)	89 (0.63%)
B (positive by bacteriology)	38 (0.27%)
O (incomplete investigation)	16 (0.11%)
Not active	431 (3.04%)
Non-respiratory TB	2 (0.01%)
Result not yet known	31 (0.22%)

# Nil of significance detected

\* for NT Chest Clinics only

TABLE 31 ANNUAL ATTENDANCES AND TREND OF VENEREAL DISEASES 1974 TO 1983

NEW ATTENDANCES	1974	1975	1976	1977	1978	1979	1980	1981	1982	1983
<b>VENEREAL DISEASES</b>										
Syphilis	1 567	1 439	1 134	1 101	1 244	1 130	1 092	970	830	699
Non-congenital										
Primary	68	66	179	79	83	37	102	109	94	70
Secondary	19	28	17	12	17	14	36	37	20	29
Early Latent	459	537	276	250	258	282	239	188	130	149
Late Latent	926	724	582	678	783	706	663	588	553	428
All Others	43	40	38	27	9	15	18	13	12	10
Congenital										
Under 1 year	5	3	13	20	27	22	6	-	-	2
Over 1 year	47	41	29	35	67	54	28	35	21	11
Gonorrhoea	5 267	4 372	3 279	2 115	2 052	2 761	2 629	3 362	4 546	4 275
Non-specific Genital Infection	1 285*	845*	1 095*	909*	847*	974*	960*	1 492	2 091	1 685
Chancroid	143	157	113	197	234	163	357	439	310	261
Lymphogranuloma Venereum	71	54	33	36	48	36	76	75	31	31
Herpes Genitalis+	-	-	-	-	-	-	267	268	414	497
Genital Warts+	-	-	-	-	-	-	456	673	971	1 368
Pediculosis Pubis+	-	-	-	-	-	-	66	42	86	103
Scabies#	-	-	-	-	-	-	-	-	229	390
Others (unclassified)	1 697	1 128	961	660	176	324	399	280	298	207
<b>ALL VENEREAL DISEASES</b>	10 030	7 995	6 615	5 018	4 601	5 388	6 302	7 601	9 806	9 516
<b>NON-VENEREAL DISEASES</b>	7 062	7 709	6 693	5 906	5 316	4 900	6 250	6 643	6 820	7 701
<b>SKIN DISEASES</b>	16 545	20 807	16 438	15 982	16 907	16 392	15 470	14 964	16 960	17 664
<b>NEW ATTENDANCES (ALL TYPES)</b>	33 637	36 511	29 746	26 906	26 824	26 680	28 022	29 208	33 586	34 881
<b>TOTAL ATTENDANCES (ALL TYPES)</b>	169 742	178 277	154 871	139 711	138 858	142 691	144 641	150 852	166 933	173 957

\* Male cases only, female cases classified under non-veneraeal diseases

+ Formerly classified as skin diseases

# Formerly classified as skin diseases; partly classified as venereal diseases v.e.f. 1982

TABLE 32 VDRL EXAMINATIONS IN EXPECTANT MOTHERS 1979 TO 1983

Examinations	1979*	1980*	1981*	1982	1983
Venous Blood	68 966	71 482	85 837	90 092	83 122
Positive	363	417	294	285	283
% Positive	0.53	0.58	0.34	0.32	0.34

\* Excluding examinations done in AHML Nethersole Hospital, Caritas Medical Centre, Our Lady of Maryknoll Hospital, United Christian Hospital, Pok Oi Hospital and Yan Chai Hospital.

TABLE 33 LEPROSY CASES 1974 TO 1983

## I) Incidence of Leprosy

Year	New Cases		Imported Cases	New Cases Admitted to	
	No.#	Incidence Rate* per 100 000 population		Hei Ling Chau Leprosarium	Lai Chi Kok Hospital
1974	119	2.8	12	36	-
1975	78	1.8	1	-	27
1976	76	1.7	2	-	34
1977	73	1.6	1	-	24
1978	74	1.6	5	-	23
1979	70	1.4	7	-	20
1980	60	1.2	4	-	18
1981	55	1.1	5	-	10
1982	57	1.1	5	-	14
1983	38	0.7	4	-	6

\* Rates for the years 1977 to 1980 based on revised population estimates after 1981 Census.

# Including imported cases.

## II) Number of New Cases by Age 1983

Age Group	No. of cases
Under 1	-
1 - 4	-
5 - 9	-
10 - 14	-
15 - 19	-
20 - 24	1
25 - 29	5
30 - 34	3
35 - 39	2
40 - 44	2
45 - 49	4
50 - 54	6
55 - 59	5
60 & over	10
Total	38

TABLE 34 ANALYSIS OF DERMATOLOGICAL CONDITIONS PRESENTING AT CLINICS 1983

Dermatological Condition	No. of Cases	Dermatological Condition	No. of Cases
Acne	1 051	Nevi (all types)	59
Alopecia	296	Pediculosis	3
Angioedema	3	Pemphigus	95
Carcinoma	25	Paronychia	66
Contact dermatitis	710	Pityriasis rosea	219
Dermatitis exfoliative	6	Pityriasis alba	136
Dermatitis herpetiformis	12	Pruritus	570
Dermatomyositis	20	Psoriasis	705
Drug eruption	68	Purpura	1
Eczema (all types)	6 726	Pyoderma	211
Epidermolysis bullosa	-	Raynaud's phenomema	3
Erythema multiforme	27	Rosacea	165
Erythema nodosum	4	Scabies	1 338
Granuloma	13	Scleroderma	2
Herpes simplex	73	Tinea (all types)	2 323
Herpes zoster	214	TB Cutis	44
Ichthyosis	29	Tumors, benign	-
Keloid	86	Ulcer, varicose	36
Keratosis (all types)	62	Urticaria	700
Lichen amyloidosis	114	Vasculitis	3
Lichen planus	67	Verruca	743
Light sensitivity	22	Vitiligo	198
Lupus (all types)	41	Xanthoma	7
Miliaria	30	Leprosy	6
Molluscum contagiosum	27	Miscellaneous	882
Neurodermatitis	772		
Neurofibromatosis	4	TOTAL	19 017

TABLE 35 DISTRIBUTION OF FAMILY HEALTH CENTRES AS AT 31ST MARCH 1984

Centre	Hong Kong	Kowloon	NT and Islands	Total
<u>Maternal &amp; Child Health</u>				
Full-time				
with Midwifery Service	1	7	3	11
without Midwifery Service	7	7	5	19
Part-time				
with Midwifery Service	-	-	9	9
without Midwifery Service	1	1	2	4
<u>Comprehensive Observation Service</u>				
Full-time	3	14	6	23
Part-time	6	1	13	20
<u>Family Planning</u>				
Full-time	-	2	2	4
Part-time	10	14	19	43

TABLE 36 WORK OF FAMILY HEALTH SERVICE 1982 AND 1983  
(Maternal and Child Health)

	1982	1983
<u>Number of Centres (as at 31.12.83)</u>		
Full-time	28	29
Part-time	14	13
<u>Ante-natal Sessions</u>		
Total sessions	4 124	4 210
New attendances	39 928	37 739
Total attendances	258 191	257 084
Average attendance per session	62.61	61.07
Average attendance per person	6.47	6.81
<u>Post-natal Sessions</u>		
Total sessions	1 756	1 855
New attendances	27 568	28 667
Total attendances	27 815	29 081
Percentage presenting with some abnormalities	6.62%	6.44%
<u>Infant Welfare Sessions (0-2 years of age)</u>		
Total sessions	8 998	9 207
New attendances	79 801	78 012
Total attendances	1 049 283	1 062 216
<u>Toddler Welfare Sessions (2-5 years of age)</u>		
Total sessions	1 720	1 762
New attendances	46 191	48 737
Total attendances	123 812	138 181
Percentage of new attendances presenting with some abnormalities (0-5 years of age)	2.29%	2.75%
<u>Home Visits</u>	93 900	102 295

TABLE 37 WORK OF FAMILY HEALTH SERVICE 1982 AND 1983  
(Comprehensive Observation Service)

	<u>1982</u>	<u>1983</u>
Number of centres (as at 31.12.83)		
Full-time	21	23
Part-time	20	19
Number of sessions held	12 342	13 898
Number of children examined	112 760	125 171
Number of new cases	65 709	62 738
Total number of developmental screening tests done	145 367	163 068
Number of children found to have defects/disabilities* (including provisional cases)	1 282	1 846
Number of referrals	1 526	2 105

\* Based on notification forms received.

TABLE 38 WORK OF FAMILY HEALTH SERVICE 1982 AND 1983  
(Family Planning)

		<u>1982</u>	<u>1983</u>
Number of centres (as at 31.12.83)	Full-time	4	4
	Part-time	41	42
	Total	45	46
Number of sessions provided		7 695	7 975
Number of clients	New	48 690	50 532
	Old	67 135	75 677
	Total	115 825	126 209
Number of attendances		368 104	408 810
Characteristics of new clients			
I. Contraceptive method	Pills	21 007	20 972
	Injections	689	1 835
	IUD's	541	638
	Condoms	24 658	24 551
	Other methods	1 795	2 536
	Total	48 690	50 532
II. Age	Under 20	1 530	1 484
	20 - 24	14 027	13 697
	25 - 29	20 667	22 235
	30 - 34	9 256	9 899
	35 - 39	2 314	2 400
	40 - 44	607	585
	45 & over	289	232
	Total	48 690	50 532

Note : New clients refer to

- (1) Clients never attend family planning clinics.
- (2) F.P.A. clients first attend our clinics after the date of take-over.
- (3) Return of clients after pregnancy, advised pregnancy, advised sterilization and referred to hospital.
- (4) Return of non-I.U.D. clients whose date of last visit was over 2 years ago and I.U.D. clients whose date of last visit was over 4 years ago.

TABLE 39 WORK OF OCCUPATIONAL HEALTH DIVISION 1982 AND 1983

	1982	1983
I. <u>Number of Occupational Diseases Notified</u> (Under the Factories and Industrial Undertakings Regulations)		
Decompression sickness		
Type I	81	1 189
Type II	-	2
Dysbaric osteonecrosis	1	6
Contact dermatitis	9	18
Silicosis	510	295
Poisoning by Lead	1	-
II. <u>Occupational Injuries</u>		
No. of occupational injuries reported	81 132	79 204
No. of accidents requiring notification under Employees' Compensation Ordinance	71 124	71 141
III. <u>Employees' Compensation Case Work</u>		
Total no. of interviews with injured employees	168 108	175 081
Cases assessed by Occupational Health Officers+	333	38
Cases assessed by Medical Assessment Boards+	22 833	18 550
Cases assessed by Special Assessment Boards@	-	14

+ For employees' compensation cases occurring before 1.7.83

@ Employees' compensation cases occurring on and after 1.7.83 are assessed by statutory boards with the enactment of the Employees' Compensation (Amendment) Ordinance. Occupational Health Officers only sit on Special Assessment Boards for these cases.

TABLE 40 ENVIRONMENTAL AND BIOLOGICAL MONITORING AND SURVEY WORK OF OCCUPATIONAL HEALTH DIVISION 1983

<u>Nature of Survey work</u>	<u>No. of surveys</u>	<u>No. of samples taken</u>
I. <u>Field Survey Work</u>		
(A) <u>Atmospheric monitoring :</u>		
Acetic acid	2	5
Acetone	11	12
Ammonia	26	50
Asbestos	16	39
Benzene	3	4
Butyl acetate	3	4
Cadmium	7	13
Carbon dioxide	10	21
Carbon monoxide	15	40
Carbon tetra-chloride	2	2
Chlorine	2	4
Chloroform	2	3
Chromic acid	35	57
Colophony fume	8	30
Dust	166	1 196
Ethyl acetate	6	8
Explosive gas	1	2
Formaldehyde	6	17
Gasoline	2	3
Hydrocarbon	2	3
Hydrogen chloride	3	5
Hydrogen cyanide	9	12
Hydrogen sulphide	5	12
Iso-propyl acetate	1	1
Iso-propyl alcohol	10	15
Lead	22	31
Methyl ethyl ketone	22	28
Methylene chloride	3	4
Natural gas	1	2
Nitric oxide	1	1
Nitrogen dioxide	18	30
Oil mist	1	2
Olefin	1	1
Oxygen	1	3
Ozone	20	32
Perchloroethylene	20	51
Phosgene	5	10
Styrene	16	28
Sulphur dioxide	2	4
Sulphuric acid	2	4
Toluene	36	54
Toluene di-isocyanate	7	13
1,1,1-Trichloroethane	25	40
Trichloroethylene	35	54
Vinyl chloride	1	1
Welding fume	1	2
Xylene	26	37
(B) <u>Ventilation surveys :</u>		
General ventilation	150	-
Local exhaust	162	-
(C) <u>Thermal surveys</u>	5	-
(D) <u>Lighting surveys</u>	9	-
<b>Total</b>	<u>945</u>	<u>1 990</u>

TABLE 40 (Cont'd)

II. Laboratory Analysis Work

Nature of analysis work	No. of analyses	No. of samples/specimens collected
(A) Air-pollution Monitoring Programme :		
Sulphur dioxide	891	891
Sulphur trioxide	364	364
Smoke	891	891
PH measurements	21	)
Total water insoluble matter	21	)
Carbon disulphide soluble matter	21	)
Ash	21	) 21
Total water soluble matter	21	)
Calcium	20	)
Chloride	20	)
Sulphate	20	)
(B) Chemical analysis :		
Aromatics in oil	(2)	(2)
Asbestos	(34)	(34)
Cadmium	(11)	(11)
Lead	(9)	(7)
Mixed solvents (esters, ketones, hydrocarbons, etc.)	(48)	(48)
Oil mist	(3)	(3)
Silica	4 (39)	1 (39)
Tin	(2)	(2)
TDI	(4)	(4)
Metal Composition	(3)	(3)
Quartz	(2)	(2)
Silver	(3)	(3)
Major component	(26)	(26)
Acid mist	4	4
Mineral oil	(2)	(2)
(C) Urinalysis :		
Glucose	580	)
Protein	617	)
Hippuric acid	(21)	(21)
Methyl hippuric acid	(21)	
O-cresol	(21)	
Mercury in blood, urine & hair	(7)	(3)
Total	<u>3 516 (258)</u>	<u>2 789 (210)</u>

Note : Figures in brackets were analyses/samples/specimens being referred to the Government Laboratory for chemical analysis.

TABLE 41 WORK OF PORT HEALTH SERVICE 1982 AND 1983

	1982	1983
Number of ships inspected	3 515	3 381
Number of deratting exemption certificates issued	469	435
Number of radio pratique granted	7 488	7 645
Number of medical assistance and advice given	83	62
Vaccinations done		
smallpox	1 040	580
cholera	6 578	4 482
yellow fever	1 643	1 534
plague	16	85
typhus	9	4
typhoid	994	1 011

