



# DAILY INFORMATION BULLETIN

ISSUED BY GOVERNMENT INFORMATION SERVICES  
BEACONSFIELD HOUSE, HONG KONG. TEL.: 842 8777

THURSDAY, AUGUST 27, 1992

<u>CONTENTS</u>	<u>PAGE NO.</u>
GOVERNOR TO VISIT PEKING .....	1
BEIJING VISIT IMPORTANT IN DEVELOPING RELATIONS WITH CHINA: GOVERNOR	1
CONSUMER PRICE INDICES FOR JULY .....	1
CONTRACT SIGNED TO EXPAND TRANSFER CAPACITY FOR CHINA WATER .....	8
PROVISIONAL TRADE FIGURES FOR JULY 1992 .....	9
POLICY ON EX-CHINESE VIET ILLEGAL IMMIGRANTS EXPLAINED .....	11
NON-INTERVENTIONIST POLICY COMPLEMENTS FREE TRADE REGIME: STI .....	12
GOVT COMMITTED TO PROVIDING ADEQUATE SERVICES FOR DISABLED .....	13
DISABLED A SOURCE OF TALENTED MANPOWER .....	14
MARINE DEPARTMENT OFFICES REMAIN OPEN DURING HOLIDAYS .....	16
IMMIGRATION DEPARTMENT OPENS LAM TIN OFFICE .....	16
POSTAL SERVICE TO SOMALIA SUSPENDED .....	17
NEW PLB ROUTE ON HONG KONG ISLAND .....	17
WATER STORAGE FIGURE .....	17
HONG KONG GOVERNMENT EXCHANGE FUND MONEY MARKET OPERATIONS .....	18

THURSDAY, AUGUST 27, 1992

- 1 -

GOVERNOR TO VISIT PEKING  
\* \* \* \* \*

A GOVERNMENT SPOKESMAN TODAY (THURSDAY) MADE THE FOLLOWING ANNOUNCEMENT:

"AT THE INVITATION OF THE DIRECTOR OF THE HONG KONG AND MACAU AFFAIRS OFFICE OF THE STATE COUNCIL, MR LU PING, THE GOVERNOR, THE RT HON CHRISTOPHER PATTEN, WILL VISIT PEKING FROM OCTOBER 12 TO 14."

- - - - 0 - - - -

BEIJING VISIT IMPORTANT IN DEVELOPING  
RELATIONS WITH CHINA: GOVERNOR  
\* \* \* \* \*

THE GOVERNOR, THE RT HON CHRISTOPHER PATTEN, SAID TODAY (THURSDAY) HE HOPED HIS VISIT TO CHINA WOULD BE SUCCESSFUL IN BEGINNING TO DEVELOP HIS RELATIONS WITH OFFICIALS IN THE PEOPLE'S REPUBLIC OF CHINA.

SPEAKING TO REPORTERS AFTER RECEIVING THE MAYOR OF WUHAN AT GOVERNMENT HOUSE, MR PATTEN SAID: "IT WILL BE MY FIRST VISIT TO BEIJING AS GOVERNOR, THOUGH OF COURSE NOT MY FIRST BECAUSE I'VE HAD TWO PREVIOUS VISITS, ONE WHEN I WAS NEGOTIATING AN IMPORTANT CONCESSIONAL FINANCING AGREEMENT WITH CHINA."

"I LOOK FORWARD, I HOPE, TO MANY FUTURE ONES AND TO WELCOMING MR LU PING AND HIS COLLEAGUES TO HONG KONG FROM TIME TO TIME.

"THERE IS A GREAT DEAL OF WORK TO DO. THERE IS A BIG AGENDA FOR US TO GET THROUGH AND THE MORE WE CAN DEVELOP UNDERSTANDING AND MUTUAL CONFIDENCE, THE EASIER IT WILL BE FOR US TO HANDLE SOME OF THE VERY DIFFICULT ISSUES THAT LIE AHEAD OF US," HE SAID.

- - - - 0 - - - -

CONSUMER PRICE INDICES FOR JULY  
\* \* \* \* \*

THE CONSUMER PRICE INDEX (A) IN JULY THIS YEAR WAS 8.8% HIGHER THAN IN JULY LAST YEAR, ACCORDING TO THE FIGURES RELEASED TODAY (THURSDAY) BY THE CENSUS AND STATISTICS DEPARTMENT.

THIS WAS LOWER THAN THE FIGURE OF 9.3% IN THE PRECEDING MONTH.

THE SLOWER YEAR-ON-YEAR RATE OF INCREASE IN THE CPI(A) LAST MONTH THAN IN JUNE THIS YEAR WAS MAINLY DUE TO LOWER PRICES OF FRESH FRUIT AS WELL AS MORE MODERATE INCREASES IN THE PRICES OF FRESH VEGETABLES AND IN CHARGES FOR MEALS AT RESTAURANTS.

/THE ACTING .....

THURSDAY, AUGUST 27, 1992

- 2 -

THE ACTING FINANCIAL SECRETARY, MR DAVID NENDICK, COMMENTED THAT THE LATEST TREND IN RESPECT OF CPI(A) WAS ENCOURAGING.

THE CPI(B) AND THE HANG SENG CPI WERE HIGHER BY 9.3% AND 10.1% RESPECTIVELY IN JULY 1992 THAN IN JULY LAST YEAR. THE CORRESPONDING INCREASES IN JUNE 1992 WERE 9.6% AND 10.0%.

THE COMPOSITE CPI, WHICH WAS COMPILED BASED ON THE COMBINED EXPENDITURE PATTERN OF HOUSEHOLDS COVERED BY THE THREE CPIS, SHOWED AN INCREASE OF 9.3% IN JULY 1992 OVER THE SAME MONTH IN 1991. THE CORRESPONDING INCREASE IN JUNE 1992 WAS 9.6%.

DUE TO THE SAME REASONS FOR CPI(A), THE YEAR-ON-YEAR RATE OF INCREASE IN THE CPI(B) WAS SLOWER IN JULY THAN IN JUNE.

THE YEAR-ON-YEAR RATE OF INCREASE IN THE HANG SENG CPI WAS, HOWEVER, SLIGHTLY HIGHER IN JULY 1992. THIS WAS MAINLY ATTRIBUTABLE TO A LOW BASE OF COMPARISON FOR CLOTHING AND FOOTWEAR IN JULY LAST YEAR, AS A RESULT OF MAJOR SUMMER SALE IN SOME OF THE RETAIL OUTLETS.

MOREOVER, THE EFFECT OF THE SLOWER INCREASES IN PRICES OF FOOD ITEMS WAS LESS SIGNIFICANT ON THE HANG SENG CPI THAN ON THE CPI(A) AND CPI(B).

COMPARING JULY 1992 WITH JULY 1991, RELATIVELY SLOWER INCREASES IN PRICES WERE RECORDED FOR DURABLE GOODS (2.1% IN BOTH CPI(A) AND CPI(B)); FOOD (EXCLUDING MEALS AT RESTAURANTS) (4.8% IN CPI(A) AND 4.9% IN CPI(B)); TRANSPORT (6.4% AND 6.7%); MISCELLANEOUS GOODS (6.7% AND 6.5%); FUEL AND LIGHT (7.1% AND 6.9%); AND CLOTHING AND FOOTWEAR (8.0% AND 7.7%).

ON THE OTHER HAND, RELATIVELY FASTER INCREASES IN PRICES WERE RECORDED FOR MEALS AT RESTAURANTS (10.2% IN THE CPI(A) AND 10.1% IN THE CPI(B)); ALCOHOLIC DRINKS AND TOBACCO (11.2% AND 11.1%); HOUSING (12.4% AND 13.6%); AND SERVICES (12.6% AND 11.3%).

COMPARING JULY 1992 WITH JUNE 1992, THE CPI(A) INCREASED BY 0.2% WHILE THE CPI(B) AND THE HANG SENG CPI INCREASED BY 0.3% AND 0.1% RESPECTIVELY. THIS COMPARISON WAS, HOWEVER, AFFECTED BY SEASONAL FACTORS.

THE INCREASES IN THE INDICES WERE LARGELY DUE TO HIGHER RENT FOR SOME PRIVATE AND PUBLIC HOUSING UNITS AND AN INCREASE IN THE CHARGES FOR MEALS AT RESTAURANTS, ALTHOUGH FOR THE LATTER THE YEAR-ON-YEAR RATE OF INCREASE WAS ALREADY MODERATING IN JULY. THE EFFECT OF SOME OF THESE PRICE INCREASES WAS OFFSET BY LOWER PRICES OF FRESH FRUIT AND FRESH VEGETABLES DURING THE MONTH.

FOR THE THREE MONTHS ENDED JULY 1992, THE CPI(A) WAS, ON AVERAGE, HIGHER BY 9.0% THAN IN THE SAME PERIOD LAST YEAR. THE CORRESPONDING FIGURE FOR THE CPI(B) WAS 9.3%.

/FOR THE .....

THURSDAY, AUGUST 27, 1992

- 3 -

FOR THE FIRST SEVEN MONTHS OF THIS YEAR, THE CPI(A) AND THE CPI(B) WERE, ON AVERAGE, HIGHER BY 9.4% AND 9.6% RESPECTIVELY THAN IN THE CORRESPONDING PERIOD OF 1991.

FOR THE 12 MONTHS ENDED JULY 1992, BOTH THE CPI(A) AND THE CPI(B) WERE, ON AVERAGE, HIGHER BY 10.2% THAN IN THE PRECEDING 12-MONTH PERIOD.

SEASONALLY ADJUSTED SERIES ARE ALSO AVAILABLE FOR THE INDICES. THE DESEASONALISED CPI(A) AND CPI(B) INCREASED AT AN AVERAGE RATE OF 0.5% AND 0.6% RESPECTIVELY PER MONTH DURING THE THREE MONTHS ENDED JULY 1992.

DETAILS ARE GIVEN IN THE "CONSUMER PRICE INDEX REPORT" FOR JULY 1992, WHICH IS AVAILABLE AT \$9 A COPY FROM THE GOVERNMENT PUBLICATIONS SALES CENTRE, GENERAL POST OFFICE BUILDING, GROUND FLOOR, CONNAUGHT PLACE, HONG KONG; OR FROM THE CENSUS AND STATISTICS DEPARTMENT, 19TH FLOOR, WANCHAI TOWER 1, 12 HARBOUR ROAD, WAN CHAI, HONG KONG; OR FROM THE INFORMATION SERVICES DEPARTMENT, FRENCH MISSION BUILDING, 1 BATTERY PATH, HONG KONG FOR LOCAL AND OVERSEAS MAILINGS.

FOR ENQUIRIES ABOUT THE INDICES, PLEASE TELEPHONE THE CONSUMER PRICE INDEX SECTION OF THE CENSUS AND STATISTICS DEPARTMENT ON 805 6403.

DETAILS OF THE HANG SENG CPI ARE CONTAINED IN THE HANG SENG CPI REPORT ISSUED BY THE ECONOMIC RESEARCH DEPARTMENT OF HANG SENG BANK LTD.

- - - - -

/TABLE 1 .....

Table 1 Consumer Price Indices and Rates of Increase for July 1992  
(Oct. 89 - Sep. 90 = 100)

Component	CPI(A)		CPI(B)		Hang Seng CPI		Composite CPI	
	Index for Jul 92	% change over Jul 91	Index for Jul 92	% change over Jul 91	Index for Jul 92	% change over Jul 91	Index for Jul 92	% change over Jul 91
	Food	124.5	+7.5	125.5	+8.0	124.3	+9.1	124.8
Meals bought away from home	130.2	+10.2	130.1	+10.1	126.7	+11.4	129.4	+10.4
Food, excluding meals bought away from home	118.8	+4.8	119.1	+4.9	120.3	+5.3	119.1	+4.9
Housing	131.7	+12.4	132.3	+13.6	132.9	+11.9	132.3	+12.7
Fuel and light	116.4	+7.1	115.8	+6.9	115.6	+6.4	116.0	+6.9
Alcoholic drinks and tobacco	161.7	+11.2	154.0	+11.1	150.5	+11.0	157.4	+11.1
Clothing and footwear	118.2	+8.0	119.0	+7.7	124.0	+16.5	120.5	+10.7
Durable goods	106.9	+2.1	106.0	+2.1	109.2	+4.5	107.2	+2.8
Miscellaneous goods	115.2	+6.7	114.3	+6.5	113.6	+5.9	114.4	+6.4
Transport	125.5	+6.4	125.4	+6.7	126.3	+6.4	125.7	+6.5
Services	129.5	+12.6	127.4	+11.3	123.2	+10.2	126.7	+11.4
All items	125.5	+8.8	125.4	+9.3	125.4	+10.1	125.4	+9.3

The 1989/90-based consumer price indices are based on the expenditure patterns derived from the 1989/90 Household Expenditure Survey. The CPI(A) is based on the expenditure pattern of about 50% of urban households in Hong Kong, which had an average monthly expenditure of \$2,500-\$9,999 a month in 1989/90. The CPI(B) is based on the expenditure pattern of the next 30% of urban households, which had an average monthly expenditure of \$10,000-\$17,499 in the same period. The Hang Seng CPI is based on the expenditure pattern of the next 10% of urban households, which had an average monthly expenditure of \$17,500-\$37,499 in 1989/90.

Whereas the CPI(A), CPI(B) and Hang Seng CPI are based on the expenditure patterns of groups of households with different magnitudes of household expenditure, the Composite CPI is compiled based on the expenditure pattern of all these households taken together. Thus, while the CPI(A), CPI(B) and Hang Seng CPI show the impact of consumer price changes on different groups of households, the Composite CPI shows the impact of consumer price changes on the household sector generally.

Table 2 Consumer Price Indices for October 1990 - July 1992  
(Oct. 89 - Sep. 90 = 100)

<u>Year/month</u>	<u>CPI(A)</u>	<u>CPI(B)</u>	<u>Hang Seng CPI</u>	<u>Composite CPI</u>
1990 October	105.8	105.9	106.7	106.1
November	106.5	106.7	107.8	106.9
December	107.4	107.6	108.1	107.7
1991 January	108.3	108.4	108.6	108.4
February	110.3	110.1	110.2	110.2
March	111.9	111.1	110.7	111.3
April	113.9	113.0	112.0	113.1
May	114.0	113.6	113.4	113.7
June	114.6	114.1	113.9	114.2
July	115.4	114.8	113.9	114.8
August	116.0	115.3	114.6	115.4
September	116.8	116.1	115.8	116.3
October	117.2	116.8	117.4	117.1
November	117.7	117.6	118.7	117.9
December	118.1	118.3	118.5	118.3
1992 January	119.7	119.3	119.4	119.5
February	121.8	121.2	121.0	121.4
March	122.5	121.9	121.8	122.1
April	124.0	123.4	122.9	123.5
May	124.0	123.8	124.2	124.0
June	125.3	125.1	125.2	125.2
July	125.5	125.4	125.4	125.4

Chart 1 Year-on-year Rates of Increase  
in CPI(A)

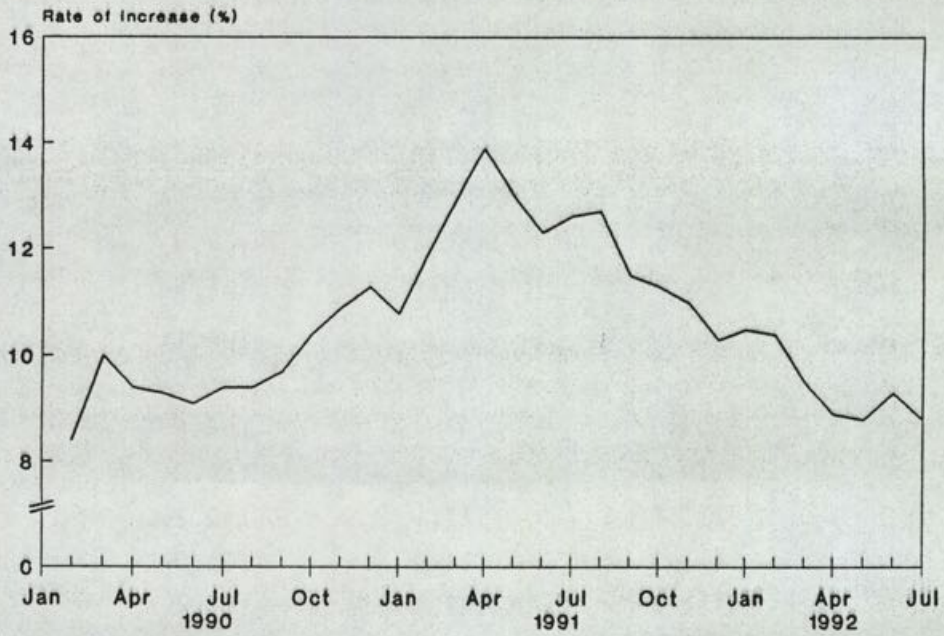
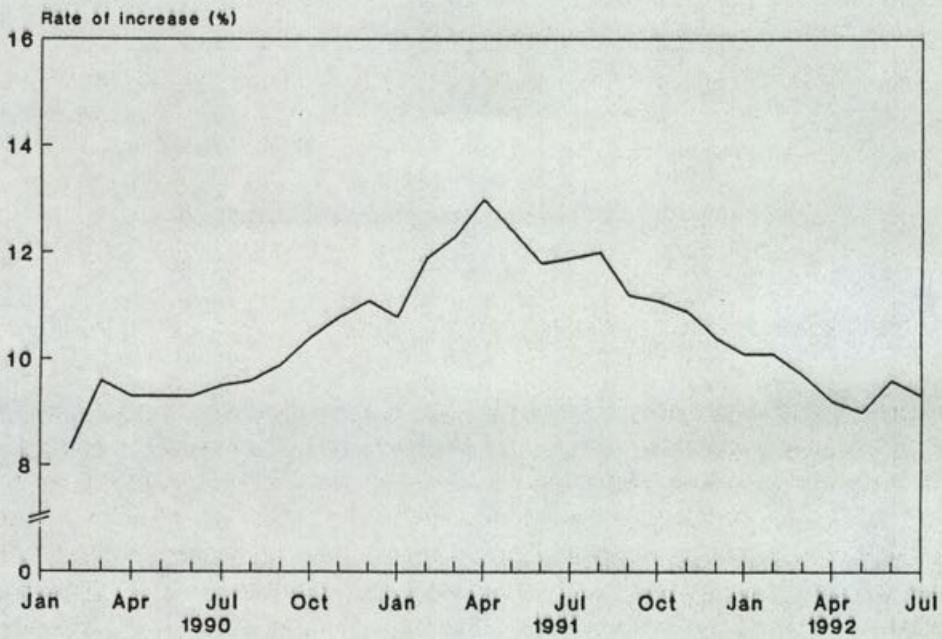


Chart 2 Year-on-year Rates of Increase  
in CPI(B)



/CHART 3 .....

Chart 3 Year-on-year Rates of Increase in Hang Seng CPI

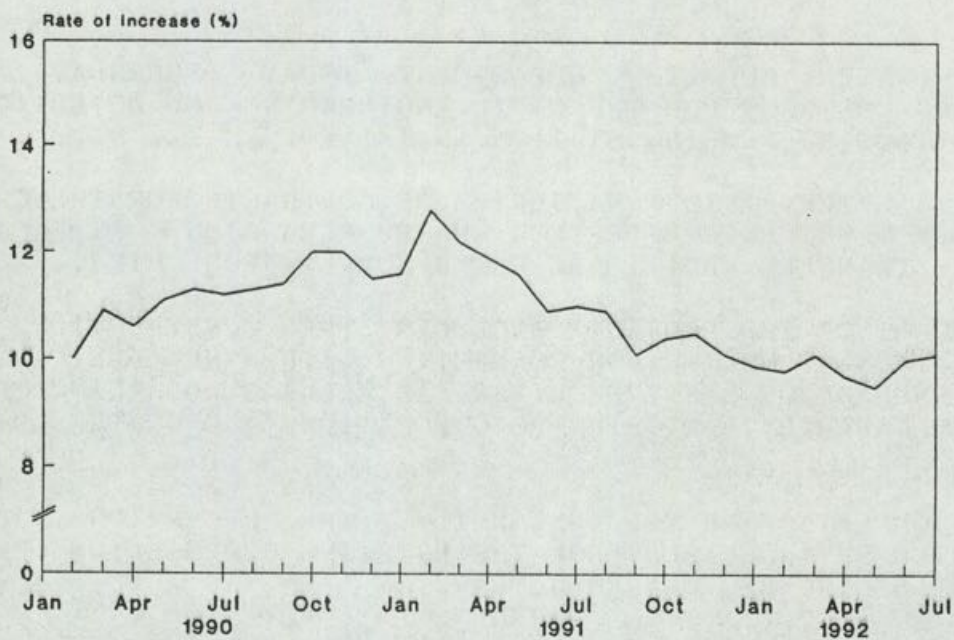
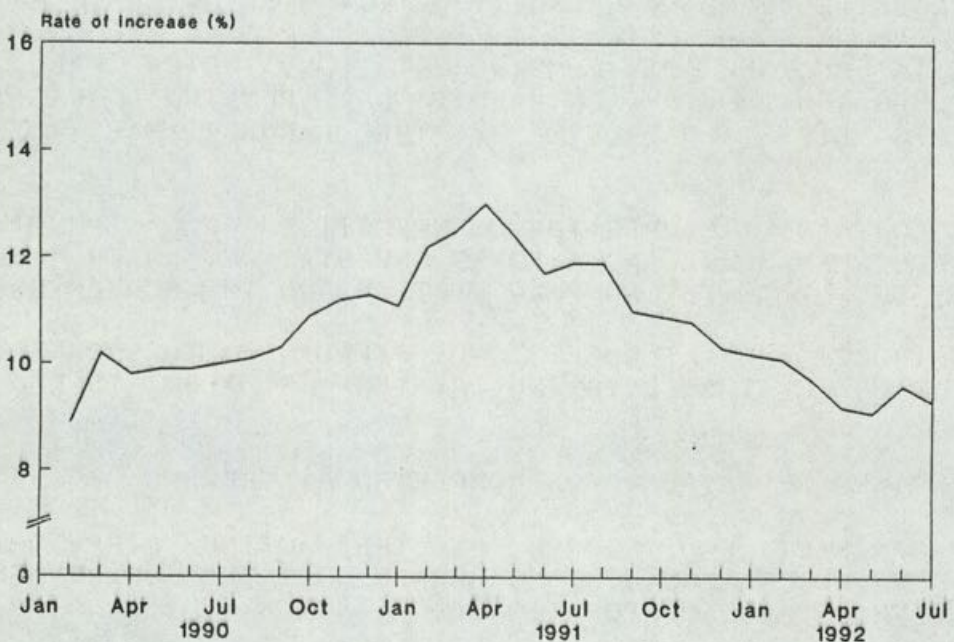


Chart 4 Year-on-year Rates of Increase in Composite CPI



THURSDAY, AUGUST 27, 1992

- 8 -

CONTRACT SIGNED TO EXPAND TRANSFER CAPACITY FOR CHINA WATER

\* \* \* \* \*

THE WATER SUPPLIES DEPARTMENT TODAY (THURSDAY) AWARDED A \$194 MILLION CONTRACT FOR THE CIVIL ENGINEERING AND BUILDING WORKS OF THE TAI PO TAU 'D' PUMPING STATION IN TAI PO.

THIS IS THE FIFTH IN A SERIES OF CONTRACTS FOR THE CHINA WATER SUPPLY PROJECT WHICH PROVIDES FOR PHASED EXPANSION OF FACILITIES TO RECEIVE AND TRANSFER ADDITIONAL WATER SUPPLY FROM CHINA.

STAGE I OF THE PROJECT INCLUDES THE CONSTRUCTION OF A NEW PUMPING STATION AT MUK WU FOR CONNECTING WITH A NEW DELIVERY POINT AT THE NORTHERN BANK OF SHENZHEN RIVER, AS WELL AS UPGRADING THE TRANSFER AND PUMPING CAPABILITY AT STRATEGIC LOCATIONS ALONG THE DISTRIBUTION ROUTES.

ON COMPLETION OF THE EXPANSION, THE RECEPTION AND TRANSFER CAPACITY WILL BE INCREASED FROM THE EXISTING 620 MILLION CUBIC METRES TO 1,100 MILLION CUBIC METRES A YEAR.

TAI PO TAU PUMPING STATION IS A FOCAL POINT IN ONE OF THE ROUTES WHICH RECEIVE WATER FROM MUK WU PUMPING STATION AND WHENCE DISTRIBUTES THE WATER TO PLOVER COVE AND SHA TIN TREATMENT WORKS.

THERE ARE THREE EXISTING PUMPING SYSTEMS AT TAI PO TAU, DESIGNATED AS TAI PO TAU 'A', 'B' AND 'C' PUMPING STATIONS, WHICH PROVIDE A COMBINED PUMPING CAPACITY OF 1.4 MILLION CUBIC METRES A DAY.

THE TAI PO TAU 'D' PUMPING STATION, WHICH WILL ULTIMATELY HOUSE 14 PUMPS AND PROVIDE AN ADDITIONAL PUMPING CAPACITY OF 3.1 MILLION CUBIC METRES A DAY, WILL BE THE LARGEST RAW WATER PUMPING STATION IN HONG KONG.

THE CONTRACT INCLUDES THE CONSTRUCTION OF A PUMPING STATION BUILDING, A SCREEN HOUSE AND A POWER SUB-STATION, WHICH WILL PROVIDE ELECTRICITY SUPPLY TO THE PUMPING STATION AND THE SCREEN HOUSE.

CONSTRUCTION OF TUNNELS AND PIPELINES TO CONNECT THE NEW PUMPING STATION TO THE EXISTING SYSTEM IS ALSO INCLUDED IN THE CONTRACT.

WORKS ARE EXPECTED TO BE COMPLETED BY THE END OF 1994.

THE CONTRACT WAS SIGNED BY THE ACTING DIRECTOR OF WATER SUPPLIES, MR HU MAN-SHIU, ON BEHALF OF THE GOVERNMENT AND A REPRESENTATIVE OF AOKI CORPORATION.

- - - - 0 - - - -

THURSDAY, AUGUST 27, 1992

- 9 -

PROVISIONAL TRADE FIGURES FOR JULY 1992

\* \* \* \* \*

PROVISIONAL TRADE FIGURES RELEASED TODAY (THURSDAY) BY THE CENSUS AND STATISTICS DEPARTMENT SHOWED THAT IN JULY THIS YEAR, RE-EXPORTS CONTINUED TO GROW STRONGLY, WHILE DOMESTIC EXPORTS SHOWED A SMALL INCREASE. IMPORTS ALSO RECORDED A MARKED GROWTH.

THE VALUE OF RE-EXPORTS ROSE BY \$12,275 MILLION OR 25.3% OVER A YEAR EARLIER TO \$60,782 MILLION IN JULY 1992. THE VALUE OF DOMESTIC EXPORTS ALSO INCREASED, BY \$202 MILLION OR 1.0% TO \$21,380 MILLION.

TAKING RE-EXPORTS AND DOMESTIC EXPORTS TOGETHER, THE VALUE OF TOTAL EXPORTS IN JULY GREW BY \$12,477 MILLION OR 17.9% OVER A YEAR EARLIER TO \$82,162 MILLION.

MEANWHILE, THE VALUE OF IMPORTS IN JULY INCREASED BY \$15,884 MILLION OR 23.0% OVER A YEAR EARLIER TO \$84,966 MILLION.

AS THE VALUE OF TOTAL EXPORTS WAS SMALLER THAN THAT OF TOTAL IMPORTS, A VISIBLE TRADE DEFICIT OF \$2,804 MILLION, EQUIVALENT TO 3.3% OF THE VALUE OF IMPORTS, WAS RECORDED IN JULY 1992. THIS COMPARED WITH A SURPLUS OF \$603 MILLION, EQUIVALENT TO 0.9% OF THE VALUE OF IMPORTS, RECORDED IN JULY 1991.

IN THE FIRST SEVEN MONTHS OF 1992, THE VALUE OF RE-EXPORTS INCREASED BY \$88,394 MILLION OR 31.4% OVER A YEAR EARLIER TO \$370,014 MILLION. THE VALUE OF DOMESTIC EXPORTS AMOUNTED TO \$128,321 MILLION, \$2,218 MILLION OR 1.8% HIGHER THAN IN THE FIRST SEVEN MONTHS OF 1991.

TAKING RE-EXPORTS AND DOMESTIC EXPORTS TOGETHER, THE VALUE OF TOTAL EXPORTS, AT \$498,335 MILLION IN THE FIRST SEVEN MONTHS OF 1992, WAS \$90,612 MILLION OR 22.2% HIGHER THAN A YEAR EARLIER.

THE VALUE OF IMPORTS INCREASED BY \$99,309 MILLION OR 23.2% TO \$527,612 MILLION.

A VISIBLE TRADE DEFICIT OF \$29,277 MILLION, EQUIVALENT TO 5.5% OF THE VALUE OF IMPORTS, WAS RECORDED IN THE FIRST SEVEN MONTHS OF 1992. THIS COMPARED WITH THE DEFICIT OF \$20,580 MILLION, EQUIVALENT TO 4.8% OF THE VALUE OF IMPORTS, RECORDED IN THE SAME PERIOD LAST YEAR.

COMMENTING ON THE JULY TRADE FIGURES, A GOVERNMENT SPOKESMAN SAID DOMESTIC EXPORTS HAD REBOUNDED FROM THE EARLIER DECLINE FOR TWO CONSECUTIVE MONTHS, ALTHOUGH THE LATEST INCREASE WAS ONLY SMALL.

THE ROBUST RE-EXPORT PERFORMANCE WAS UNDERPINNED BY THE CONTINUED STRONG GROWTH IN RE-EXPORTS INVOLVING CHINA IN BOTH DIRECTIONS.

INDICATIVE OF A SUSTAINED INCREASE IN DOMESTIC DEMAND AND PROBABLY ALSO A BETTER OUTLOOK FOR DOMESTIC EXPORTS, IMPORTS RETAINED FOR LOCAL USE CONTINUED TO SHOW A SUBSTANTIAL RISE. IN THE FIRST SEVEN MONTHS OF 1992, RETAINED IMPORTS GREW BY 13.1% IN VALUE TERMS OVER A YEAR EARLIER.

/THE FOLLOWING .....

THURSDAY, AUGUST 27, 1992

- 10 -

THE FOLLOWING TABLE PRESENTS THE PROVISIONAL TRADE FIGURES FOR JULY 1992:

MERCHANDISE: DOMESTIC EXPORTS :	\$21,380 MILLION	
RE-EXPORTS :	\$60,782 MILLION	
TOTAL EXPORTS :	\$82,162 MILLION	
IMPORTS :	\$84,966 MILLION	
TRADE BALANCE :	\$2,804 MILLION	(IN DEFICIT)

-----  
COMPARATIVE FIGURES

LATEST 3 MONTHS	MAY 92 TO	MAY 91 TO	INCREASE	
	JUL 92 HK\$ MN	JUL 91 HK\$ MN	HK\$ MN	%
DOMESTIC EXPORTS	61,897	59,420	2,477	4.2
RE-EXPORTS	177,072	135,747	41,325	30.4
TOTAL EXPORTS	238,969	195,167	43,802	22.4
IMPORTS	251,105	199,812	51,293	25.7
TRADE BALANCE	-12,136	-4,645	-7,491	

SAME MONTH LAST YEAR	JULY	JULY	INCREASE	
	1992 HK\$ MN	1991 HK\$ MN	HK\$ MN	%
DOMESTIC EXPORTS	21,380	21,178	202	1.0
(% OF TOTAL EXPORTS)	(26.0%)	(30.4%)		
RE-EXPORTS	60,782	48,507	12,275	25.3
TOTAL EXPORTS	82,162	69,685	12,477	17.9
IMPORTS	84,966	69,082	15,884	23.0
TRADE BALANCE	-2,804	603	-3,407	

LAST MONTH	JULY	JUNE	INCREASE	
	1992 HK\$ MN	1992 HK\$ MN	HK\$ MN	%
DOMESTIC EXPORTS	21,380	21,111	269	1.3
(% OF TOTAL EXPORTS)	(26.0%)	(26.3%)		
RE-EXPORTS	60,782	59,114	1,668	2.8
TOTAL EXPORTS	82,162	80,225	1,937	2.4
IMPORTS	84,966	84,621	345	0.4
TRADE BALANCE	-2,804	-4,396	1,592	

CALENDAR YEAR TO-DATE	JAN-JUL	JAN-JUL	INCREASE	
	1992 HK\$ MN	1991 HK\$ MN	HK\$ MN	%
DOMESTIC EXPORTS	128,321	126,103	2,218	1.8
(% OF TOTAL EXPORTS)	(25.7%)	(30.9%)		
RE-EXPORTS	370,014	281,620	88,394	31.4
TOTAL EXPORTS	498,335	407,723	90,612	22.2
IMPORTS	527,612	428,303	99,309	23.2
TRADE BALANCE	-29,277	-20,580	-8,697	

/LAST 12 .....

THURSDAY, AUGUST 27, 1992

- 11 -

LAST 12 MONTHS	AUG 91 TO	AUG 90 TO	INCREASE	
	JUL 92	JUL 91	HK\$ MN	%
	HK\$ MN	HK\$ MN		
DOMESTIC EXPORTS	233,264	231,031	2,233	1.0
RE-EXPORTS	623,234	476,329	146,905	30.8
TOTAL EXPORTS	856,498	707,360	149,138	21.1
IMPORTS	878,291	724,521	153,770	21.2
TRADE BALANCE	-21,793	-17,161	-4,632	

- - - - 0 - - - -

#### POLICY ON EX-CHINESE VIET ILLEGAL IMMIGRANTS EXPLAINED

\* \* \* \* \*

EX-CHINESE VIETNAMESE ILLEGAL IMMIGRANTS (ECVIIs) WHO HAD PREVIOUSLY RESETTLED IN CHINA BEFORE THEY CAME TO HONG KONG ARE REPATRIATED TO CHINA UPON CONFIRMATION OF THEIR PREVIOUS RESIDENCY IN CHINA, THE SECRETARY FOR SECURITY, MR ALISTAIR ASPREY, SAID TODAY (THURSDAY).

"THESE PEOPLE HAVE SOUGHT AND OBTAINED ASYLUM IN CHINA, HAVE RESETTLED THERE, AND ARE CHINESE RESIDENTS. IF THEY SUBSEQUENTLY ENTERED HONG KONG, THEIR STATUS IS NO DIFFERENT FROM OTHER ILLEGAL IMMIGRANTS FROM CHINA," MR ASPREY EXPLAINED.

MR ASPREY SAID A MARRIAGE BETWEEN AN ECVII AND A VIETNAMESE NON-REFUGEE DID NOT PROVIDE THEM WITH A RIGHT TO REMAIN IN HONG KONG. THE ECVII WOULD HAVE TO BE REPATRIATED TO CHINA AND THE VIETNAMESE NON-REFUGEE WOULD HAVE TO RETURN TO VIETNAM.

"PRIOR TO ANY MARRIAGE BETWEEN AN ECVII AND A VIETNAMESE MIGRANT, THE GOVERNMENT INVARIABLY EXPLAINS THE POSITION TO THEM, AND THEY ARE WELL AWARE OF THEIR LIKELY SEPARATION UPON RETURNING TO CHINA OR VIETNAM.

"IT IS SADDENING TO SEE FAMILIES BEING BROKEN UP AND WIVES BEING SEPARATED FROM THEIR HUSBANDS. HOWEVER, A REPATRIATED WIFE OR HUSBAND CAN APPLY THROUGH NORMAL PROCEDURES IN CHINA TO REJOIN THEIR SPOUSE IN VIETNAM OR VICE VERSA," HE SAID.

HE ADDED THAT THE UNHCR WAS WILLING TO HELP IN SUCH CASES AND TO SEE IF ARRANGEMENTS COULD BE MADE FOR HUSBAND AND WIFE TO REUNITE.

- - - - 0 - - - -

NON-INTERVENTIONIST POLICY COMPLEMENTS FREE TRADE REGIME: STI

\* \* \* \* \*

THE GOVERNMENT'S POSITIVE NON-INTERVENTIONIST POLICY AND THE FREE TRADE REGIME PRACTISED BY HONG KONG HAVE PERFECTED THE ADAPTABILITY, RESILIENCE AND RESOURCEFULNESS OF OUR PRIVATE SECTOR, ACTING SECRETARY FOR TRADE AND INDUSTRY, MISS DENISE YUE, SAID TODAY (THURSDAY).

SPEAKING AT THE Y'S MEN'S CLUB OF HONG KONG LUNCHEON, MISS YUE SAID AN OPEN AND FREE TRADE REGIME MEANT THAT HONG KONG'S ECONOMIC SUCCESS DEPENDED LARGELY ON THE ENTREPRENEURIAL SKILLS, FLEXIBILITY AND RESILIENCE OF ITS BUSINESSMEN.

SHE POINTED OUT THAT ON THE GOVERNMENT'S PART, EFFORTS WERE CENTRED ON COMPLEMENTING THIS PRIVATE SECTOR-LED NATURE OF THE LOCAL ECONOMY.

"UNDER A POSITIVE NON-INTERVENTIONIST REGIME, THE ROLE OF THE GOVERNMENT IS ONE OF FACILITATION.

"IN THE TRADE AREA, FOR EXAMPLE, A SIZEABLE PORTION OF GOVERNMENT RESOURCES IS DEVOTED TO THIS PURPOSE," SHE SAID.

THE REASON FOR THIS IS BECAUSE HONG KONG SURVIVES ON INTERNATIONAL TRADE, IT HAS TO PLAY THE TRADE GAME ACCORDING TO RULES AGREED INTERNATIONALLY.

"WE, THEREFORE, NEED TO ENSURE THAT HONG KONG EXERCISES ITS RIGHTS AND MEETS ITS OBLIGATIONS UNDER VARIOUS TRADE ARRANGEMENTS," SHE SAID.

"THE INTEGRITY OF OUR SYSTEMS AND OUR ABILITY TO ABIDE STAUNCHLY BY OUR INTERNATIONAL OBLIGATIONS HAVE GAINED US THE RESPECT THAT HAS BEEN TRANSLATED INTO CONCRETE TRADE BENEFITS," SHE ADDED.

SHE STRESSED THAT THE BELIEF IN FREE TRADE DID NOT MEAN THAT THE GOVERNMENT REFUSED TO GIVE TRADERS A HELPING HAND.

"THE GOVERNMENT'S EFFORT IN COUNTERING UNJUSTIFIED ANTI-DUMPING ALLEGATIONS AGAINST HONG KONG COMPANIES AND ITS LOBBYING EFFORT IN CONNECTION WITH THE RENEWAL OF CHINA'S MOST-FAVOURLED-NATION TRADING STATUS IN THE U.S. ARE AIMED AT CREATING A CONGENIAL INTERNATIONAL ENVIRONMENT WHERE TRADE CAN CONTINUE ON A FREE AND STABLE BASIS," SHE SAID.

MISS YUE NOTED THAT FREE AND OPEN TRADE HAD SERVED HONG KONG WELL.

"NOTHING EXISTS TO SUGGEST WE NEED TO CHANGE THIS. LIKEWISE NOTHING EXISTS TO SUGGEST THAT THE GOVERNMENT'S POLICY OF MINIMUM INTERVENTION BUT MAXIMUM FACILITATION SHOULD BE CHANGED," SHE SAID.

THURSDAY, AUGUST 27, 1992

- 13 -

GOVT COMMITTED TO PROVIDING ADEQUATE SERVICES FOR DISABLED  
\* \* \* \* \*

THE SECRETARY FOR HEALTH AND WELFARE, MRS ELIZABETH WONG, SAID TODAY (THURSDAY) THAT THE GOVERNMENT WAS DETERMINED TO PROVIDE ADEQUATE REHABILITATION SERVICES FOR THE DISABLED.

ADDRESSING THE OPENING OF THE SOCIAL WELFARE DEPARTMENT'S WING LUNG BANK GOLDEN JUBILEE SHELTERED WORKSHOP AND HOSTEL IN SAI KUNG, MRS WONG APPEALED TO THE COMMUNITY TO SUPPORT THE REHABILITATION SERVICES.

"IN PARTICULAR, I SINCERELY HOPE THAT THE PUBLIC WILL BACK UP PLANS TO CONSTRUCT AND OPERATE REHABILITATION SERVICE UNITS IN THEIR DISTRICTS SO THAT SERVICES FOR THE DISABLED COULD BE SMOOTHLY DEVELOPED.

"IN DOING SO, IT WILL ENABLE THE EARLY PROVISION OF THESE SERVICES. AT THE SAME TIME, IT COULD HELP RELIEVE THEIR FAMILY OF THE BURDEN OF THEIR FAMILY MEMBERS," MRS WONG ADDED.

THE DISABLED COULD DEVELOP THEIR POTENTIAL ABILITIES AND WOULD BECOME USEFUL MEMBERS OF THE COMMUNITY, THROUGH TRAINING AT DAY ACTIVITY CENTRES, SHELTERED WORKSHOPS AND HOSTELS AS WELL AS PROVISION OF SUPPORTED EMPLOYMENT SERVICES, JOB TRAINING AND VARIOUS REHABILITATION SERVICES, SHE SAID.

ON THE NEW WORKSHOP AND HOSTEL, MRS WONG PAID TRIBUTE TO THE WING LUNG BANK FOR ITS DONATION OF \$5 MILLION TOWARDS THE CONSTRUCTION COST OF THE ESTABLISHMENT.

THE WING LUNG BANK GOLDEN JUBILEE SHELTERED WORKSHOP AND HOSTEL PROVIDES 140 SHELTERED WORKSHOP PLACES FOR THE DISABLED AND 100 HOSTEL PLACES FOR MODERATELY MENTALLY HANDICAPPED PEOPLE.

"I ALSO THANK THE BANK'S SUPPORT TO THE MOST NEEDY MEMBERS OF THE COMMUNITY BY OFFERING THEM MEANINGFUL SERVICES," SHE SAID.

THE OPENING OF THE WORKSHOP WAS A GOOD EXAMPLE OF PUBLIC PARTICIPATION, MRS WONG SAID, ADDING THAT THE BANK HAD ALSO SET AN EXCELLENT INSTANCE OF TAKING THE LEAD AMONG COMMERCIAL ESTABLISHMENTS IN SPONSORING REHABILITATION SERVICE UNITS.

- - - - 0 - - - -

DISABLED A SOURCE OF TALENTED MANPOWER

\* \* \* \* \*

THE COMMISSIONER FOR LABOUR, MRS KATHERINE FOK, TODAY (THURSDAY) APPEALED TO EMPLOYERS IN ALL TRADES AND INDUSTRIES TO TAKE ON DISABLED PEOPLE AS THEY PROVIDE AN ABUNDANT SUPPLY OF WORKING TALENTS IN DIFFERENT JOBS.

SPEAKING AT THE 12TH SOUVENIR-PRESENTATION CEREMONY FOR EMPLOYERS' OF DISABLED PERSONS AND OUTSTANDING DISABLED EMPLOYEES, MRS FOK SAID MANY INDUSTRIES HAD BEEN EXPERIENCING ACUTE LABOUR SHORTAGES.

"IT IS BOTH TIMELY AND DESIRABLE TO MAKE BETTER USE OF THIS RELATIVELY UNTAPPED SOURCE OF MANPOWER," MRS FOK POINTED OUT.

"IN ADDITION, THIS WILL ENABLE THEM TO INTEGRATE IN THE COMMUNITY," SHE ADDED.

ORGANISED BY THE SELECTIVE PLACEMENT DIVISION OF THE LABOUR DEPARTMENT, THE ANNUAL EVENT IS AIMED AT PAYING TRIBUTE TO EMPLOYERS WHO HAVE EITHER EMPLOYED THE LARGEST NUMBER OF DISABLED PERSONS OR WHO HAVE MADE SPECIAL EFFORTS TO ACCOMMODATE SUCH WORKERS IN THE PAST YEAR.

DURING THE CEREMONY, DISABLED EMPLOYEES WITH OUTSTANDING PERFORMANCE AT WORK WERE ALSO COMMENDED.

NOTING THAT THE MAJORITY OF THE EMPLOYERS WHO RECEIVED SOUVENIRS BELONG TO THE SERVICE INDUSTRY, MRS FOK SAID THIS WAS IN LINE WITH THE RESTRUCTURING OF HONG KONG'S ECONOMY AS THE TREND WAS SHIFTING TOWARDS THE TERTIARY INDUSTRIES.

"I AM CONFIDENT THAT TOGETHER WE WILL WORK FOR A BRIGHTER FUTURE WHICH IS THE MOTTO ON THE SOUVENIR PLAQUES," MRS FOK SAID.

THE SELECTIVE PLACEMENT DIVISION PROVIDES A FREE COUNSELLING AND PLACEMENT SERVICE FOR DISABLED PERSONS INTERESTED IN OPEN EMPLOYMENT, INCLUDING THE PHYSICALLY HANDICAPPED, MENTALLY RETARDED AND EX-MENTALLY ILL.

"SINCE ITS INAUGURATION IN 1980, THE DIVISION HAS BEEN WORKING STEADILY IN PROMOTING PUBLIC AWARENESS OF THE WORKING ABILITIES OF THE DISABLED AND PLACING DISABLED PERSONS IN SUITABLE EMPLOYMENT IN THE OPEN MARKET," SHE SAID.

"THROUGH A SERIES OF PUBLICITY CAMPAIGNS, INCLUDING EXHIBITIONS, PROMOTION VISITS, ISSUE OF NEWSLETTERS AND PAMPHLETS, EMPLOYERS IN VARIOUS SECTORS HAVE BEEN GREATLY IMPRESSED BY THE SKILLS, MOTIVATION AND RELIABILITY OF THE DISABLED EMPLOYEES," SHE ADDED.

"THE DIVISION MADE A TOTAL OF 1,152 PLACEMENTS BETWEEN JULY 1991 AND JUNE THIS YEAR, REPRESENTING AN INCREASE OF 2.2 PER CENT OVER THE SAME PERIOD IN THE PREVIOUS YEAR," SHE SAID, NOTING THAT THERE WERE 511 EMPLOYERS USING THE SERVICE.

DURING THE CEREMONY, MRS FOK CONGRATULATED EMPLOYERS ON A JOB WELL-DONE. SHE ALSO COMMENDED EMPLOYEES FOR THEIR OUTSTANDING WORK PERFORMANCE.

"THEY HAVE DEMONSTRATED THEIR WORKING ABILITY AND ATTITUDE WHICH HAVE NOT BEEN HAMPERED IN ANY WAY BY THEIR DISABILITIES.

"I AM SURE THEY WILL CONTINUE TO DEVOTE THEMSELVES WHOLEHEARTEDLY TO THEIR WORK," SHE ADDED.

THE TOP 10 EMPLOYERS OF DISABLED PERSONS WHO WERE AWARDED SOUVENIR PLAQUES TOGETHER EMPLOYED 262 DISABLED WORKERS BETWEEN JULY 1991 AND JUNE THIS YEAR.

THEY ARE:

MCDONALD'S RESTAURANTS (HK) LTD,  
 QUALITY SECURITY LTD,  
 ONCLEVER LTD,  
 SECURITY ALLIANCE LTD,  
 FENG KEE CLEANING CO LTD,  
 LO'S CLEANING SERVICES LTD,  
 FAIRWOOD FAST FOOD CO LTD,  
 P.S. FOOD FACTORY,  
 R & G SPEEDPOST & DELIVERY LTD; AND  
 R.G.F. INTERNATIONAL LTD.

IN ADDITION, CERTIFICATES OF APPRECIATION WERE PRESENTED TO THE FOLLOWING 10 ESTABLISHMENTS FOR THEIR SPECIAL EFFORTS IN ARRANGING DUTIES AND REDEPLOYING STAFF TO ACCOMMODATE DISABLED WORKERS:

CHRISTCO LTD,  
 YAT LOY SHUM PEKING FOOD RESTAURANT,  
 KOLINKER INDUSTRIAL EQUIPMENTS LTD,  
 PIONEER FAST FOOD SHOP,  
 JOSIAH'S INSTITUTE OF ENGLISH AND COMMERCE POLYTYPE LTD,  
 SYLVA INDUSTRIES LTD,  
 PARK'N SHOP LTD,  
 TSE SUI LUN JEWELLERY COMPANY LTD; AND  
 GRAND HYATT HONG KONG.

THE 12 RECIPIENTS OF OUTSTANDING DISABLED EMPLOYEES AWARDS FOR THEIR EXEMPLARY WORK PERFORMANCE ARE:

MR CHOW KIN-CHUN OF INFORMATION TECHNOLOGY SERVICES DEPARTMENT,  
 MR MOK HING-WAH OF CORRECTIONAL SERVICES DEPARTMENT,  
 MR NG CHOR-MING OF HONG KONG TELECOM,  
 MR CHAN LAP-KEUNG OF HYATT REGENCY HONG KONG,  
 MR LUI TAT-SHING OF AMERICAN INTERNATIONAL UNDERWRITERS LTD,  
 MISS TONG MAN-SHAN OF C.C.C. NIM TSI SCHOOL,  
 MR CHAN CHI-KWONG OF CATHAY PACIFIC AIRWAYS LTD,  
 MR CHAN SZE-KIT OF BUILDINGS AND LANDS DEPARTMENT,  
 MR LEUNG WAI-KIN OF HOP TUNG CLEANING SERVICES CO,  
 MR WONG CHI-WING OF THE TREASURY,  
 MR YUEN SUN-TAT OF VEGETABLE MARKETING ORGANISATION; AND  
 MISS LAU PUI-FAN OF P & G MANAGEMENT SERVICES LTD.

MARINE DEPARTMENT OFFICES REMAIN OPEN DURING HOLIDAYS

\* \* \* \* \*

THE MARINE DEPARTMENT ANNOUNCED TODAY (THURSDAY) THAT ALL PUBLIC CARGO WORKING AREAS WILL CONTINUE TO BE OPEN FROM 7 AM TO 9 PM DAILY ON AUGUST 29 (SATURDAY), AUGUST 31 (MONDAY) AND SEPTEMBER 12 (SATURDAY) WHICH ARE PUBLIC HOLIDAYS.

THE SENIOR MARINE OFFICER (CENTRAL REGION) OF THE MARINE DEPARTMENT, MR LEUNG LAI-KIT, SAID: "THE PUBLIC CARGO WORKING AREAS ADMINISTERED BY THE DEPARTMENT ARE AT THE WESTERN DISTRICT, SHEUNG WAN, WAN CHAI, SHAM SHUI PO, YAU MA TEI, KWUN TONG, CHA KWO LING, TSUEN WAN AND RAMBLER CHANNEL."

"THE TUEN MUN PUBLIC WATERFRONT WILL ALSO BE OPEN FROM 7 AM TO 9 PM DURING THE HOLIDAYS."

ON THE THREE DAYS, THE MACAU FERRY TERMINAL WILL REMAIN OPEN ROUND THE CLOCK. THE CHINA FERRY TERMINAL IN TSIM SHA TSUI WILL BE OPEN AS USUAL BETWEEN 6 AM AND 10 PM DAILY.

ON AUGUST 30 (SUNDAY), THE VICTORIA MARINE OFFICE IN ROOM 314 ON THE THIRD FLOOR OF HARBOUR BUILDING AT 38 PIER ROAD, CENTRAL, WILL BE OPEN FROM 9 AM TO 11 AM TO FACILITATE ENTRY AND OUTWARD CLEARANCE FOR SHIPS.

THE PORT FORMALITIES OFFICE, WHICH IS IN ROOM 318 ON THE THIRD FLOOR OF HARBOUR BUILDING, WILL ALSO BE OPEN FROM 9 AM TO 11 AM TO HANDLE APPLICATIONS FOR PERMITS NORMALLY ISSUED BY THE OFFICE.

- - - - 0 - - - -

IMMIGRATION DEPARTMENT OPENS LAM TIN OFFICE

\* \* \* \* \*

THE IMMIGRATION DEPARTMENT WILL OPEN A NEW EAST KOWLOON OFFICE ON PODIUM LEVEL 2, SCENEWAY GARDEN, LAM TIN ON SEPTEMBER 1 TO PROVIDE DOCUMENTS SERVICE TO THE PUBLIC.

FROM THE SAME DAY, THE KWUN TONG OFFICE SITUATED IN ROOMS 54-60, SECOND FLOOR, AMOY PLAZA, 77 NGAU TAU KOK ROAD WILL BE CONVERTED TO A FULL REGISTRATION OF PERSONS OFFICE.

THE KWUN TONG OFFICE AT PRESENT PROVIDES BOTH DOCUMENTS AND REGISTRATION OF PERSONS SERVICES.

ON SEPTEMBER 1, THE KOWLOON CITY OFFICE SITUATED ON THE GROUND FLOOR, HANG CHIEN COURT, 7-9 WAI KING STREET WILL BE CLOSED.

"THE CHANGES WILL HELP TO MAXIMISE UTILISATION OF OUR RESOURCES. AS A RESULT, SERVICES IN GENERAL CAN BE IMPROVED," A SPOKESMAN FOR THE DEPARTMENT SAID.

MEMBERS OF THE PUBLIC MAY CALL 824 6111 FOR ENQUIRIES.

- - - - 0 - - - -

THURSDAY, AUGUST 27, 1992

- 17 -

POSTAL SERVICE TO SOMALIA SUSPENDED

\* \* \* \*

THE ACTING POSTMASTER GENERAL, MRS DORIS S Y HO, ANNOUNCED TODAY (THURSDAY) THAT AIR LETTER AND AIR PARCEL SERVICES TO THE SOMALI DEMOCRATIC REPUBLIC HAD BEEN SUSPENDED WITH IMMEDIATE EFFECT.

HOWEVER, AIR LETTER SERVICE TO FOUR DESTINATIONS IN THE NORTH OF THE COUNTRY, NAMELY BERBERA, BORAMO, BURAO AND HARGEISA WILL CONTINUE.

SHE SAID SURFACE LETTER AND PARCEL SERVICES HAD BEEN SUSPENDED SINCE NOVEMBER 1, 1991.

- - - - 0 - - - -

NEW PLB ROUTE ON HONG KONG ISLAND

\* \* \* \* \*

THE TRANSPORT DEPARTMENT TODAY (THURSDAY) ANNOUNCED THAT NEW OVERNIGHT PUBLIC LIGHT BUS (SCHEDULED) ROUTE ON HONG KONG ISLAND, ROUTE 44M, WILL START OPERATION FROM 00.01 AM ON SATURDAY (AUGUST 29) BETWEEN SIU SAI WAN ESTATE AND CHAI WAN MTR STATION.

IT WILL OPERATE FROM MIDNIGHT TO 6 AM DAILY. THE FARE WILL BE \$3 PER SINGLE JOURNEY.

- - - - 0 - - - -

WATER STORAGE FIGURE

\* \* \* \* \*

STORAGE IN HONG KONG'S RESERVOIRS AT 9 AM TODAY (THURSDAY) STOOD AT 85.4 PER CENT OF CAPACITY OR 500.744 MILLION CUBIC METRES.

THIS TIME LAST YEAR THE RESERVOIRS CONTAINED 250.550 MILLION CUBIC METRES OF WATER, REPRESENTING 42.8 PER CENT OF CAPACITY.

- - - - 0 - - - -

THURSDAY, AUGUST 27, 1992

- 18 -

HONG KONG GOVERNMENT EXCHANGE FUND  
MONEY MARKET OPERATIONS  
\* \* \* \* \*

	\$ MILLION -----
OPENING BALANCE IN THE ACCOUNT	1,500
REVERSAL OF LAF	NIL
BALANCE AFTER REVERSAL OF LAF	1,500
NET INJECTION/WITHDRAWAL TODAY	NIL
EFFECT OF LAF TODAY	+500
CLOSING BALANCE IN THE ACCOUNT	2,000

LAF RATE 2.00 BID/4.00 OFFER TWI 108.8 \*-0.0\* 27.8.92

HONG KONG GOVERNMENT EXCHANGE FUND

EF BILLS		HONG KONG GOVERNMENT BONDS				
TERMS	YIELD	TERM	ISSUE	COUPON	PRICE	YIELD
1 WEEK	2.22 PCT	15 MONTHS	2311	6.25	103.42	3.40
1 MONTH	2.35 PCT	18 MONTHS	2402	5.50	102.66	3.66
3 MONTHS	2.45 PCT	21 MONTHS	2405	5.50	102.65	3.93
6 MONTHS	2.67 PCT	24 MONTHS	2408	4.375	100.66	4.06
12 MONTHS	3.17 PCT					

TOTAL TURNOVER OF BILLS AND BONDS - 4,680 MN

CLOSED 27 AUGUST 1992

----- 0 -----