

	TABLE NO.
IX. <u>Training Programme</u>	
Training of Nursing Staff in 1985	81
Overseas Courses of Instruction 1985/86	82
Departmental Training 1985/86	83
X. <u>Medical Development</u>	
Building Programme 1985/86	84
XI. <u>Miscellaneous</u>	
Attendance at Conferences etc. Overseas 1985/86	85
Overseas Visitors 1985/86	86
Publications 1985/86	87
Samaritan Fund 1985/86	88
List of Donations Received for the Year Ended 31 March 1986	89

TABLE 1 ESTABLISHMENT OF MEDICAL & HEALTH DEPARTMENT AS AT 31.3.1986

Grade	Zone	Headquarters & Health/Miscellaneous Services	Kowloon Hospital	Prince of Wales Hospital	Princess Margaret Hospital	Queen Elizabeth Hospital	Queen Mary Hospital	Medical Services	Mental Health Service	Total	Strength on 31.3.1986
Director of Medical & Health Services		1								1	1
Deputy Director of Medical & Health Services		2								2	2
Senior Assistant Director of Medical & Health Services		4								4	4
Assistant Director of Medical & Health Services		4								4	3
#Consultant (Incl Dental)		12	1	1	16	25	10	13	8	86	82
Principal Medical & Health Officer		14	1	1	1	1	1	2		21	14
Senior Medical & Health Officer/Medical & Health Officer		205	13	159	197	305	134	347	80	1440	1331
Nursing Director		1								1	1
#Nursing Staff (Incl Psychiatric Nursing Staff)		1110	467	1669	1251	1713	1400	948	1200	9758	9714
Senior Inoculator/Inoculator		107								107	95
Midwife/Student Midwife		152			17		12	154		335	262
Principal Dental Officer/Senior Dental Officer/ Dental Officer/Assistant Dental Officer		115	3	2	3	4	2		4	133	123
Dental Hygienist/Student Dental Hygienist		4								4	3
Dental Inspector		2								2	2
Senior Dental Surgery Assistant/Dental Surgery Assistant		136	3	2	3	4	3		4	155	140

TABLE 1 (Cont'd)

Grade	Zone	Headquarters & Health/Miscellaneous Services	Kowloon Hospital	Prince of Wales Hospital	Princess Margaret Hospital	Queen Elizabeth Hospital	Queen Mary Hospital	Medical Services	Mental Health Service	Total	Strength on 31.3.1986
Senior Dental Technologist/Dental Technologist Dental Technician I/Dental Technician II/ Student Dental Technician		3		1	1	1	1			3	3
Tutor Dental Therapist/Senior Dental Therapist/ Dental Therapist/Student Dental Therapist		53								57	57
*Chief Medical Technologist/Senior Medical Technologist/ Medical Technologist/Medical Laboratory Technician I/ Medical Laboratory Technician II/Student Medical Laboratory Technician		194								194	186
Superintendent Occupational Therapist/Senior Occupational Therapist/Occupational Therapist I/Occupational Therapist II/Occupational Therapy Assistant		1		91	77	91	13	227	7	507	488
*Chief Pharmacist/Senior Pharmacist/Pharmacist/ Chief Dispenser/Senior Dispenser/Dispenser/ Student Dispenser		30	7	47	25	28	26	381	12	556	528
*Superintendent Physiotherapist/Senior Physiotherapist/ Physiotherapist I/Physiotherapist II			17	34	21	37	24	88	2	223	219
Senior Physicist/Physicist		4		7		5	3			19	19
Superintendent Radiographer/Senior Radiographer/ Radiographer I/Radiographer II/Student Radiographer		13	9	76	30	96	53	47	3	327	327

TABLE 1 (Cont'd)

Grade	Zone	Headquarters & Health/Miscellaneous Services	Kowloon Hospital	Prince of Wales Hospital	Princess Margaret Hospital	Queen Elizabeth Hospital	Queen Mary Hospital	Medical Services	Mental Health Service	Total	Strength on 31.3.1986
*Senior Mould Laboratory Technician/Mould Laboratory Technician/Student Mould Laboratory Technician		7		7		9	5			28	27
Senior X-ray Assistant/X-ray Assistant				7	1	2	4	34		34	33
X-ray Mechanic								1		15	15
Audiology Technician I/Audiology Technician II								4		4	4
Chiropodist I/Chiropodist II				1	2			4		3	3
Clinical Psychologist				1					10	13	11
*Senior Dietitian/Dietitian		3	2	5	4	5	4	1	4	28	28
Senior Electrical Technician/Electrical Technician		1		13	2	4	4	5		29	29
Senior Foreman/Foreman		10	1			12		2	3	28	27
Principal Hospital Administrator/Chief Hospital Administrator/Senior Hospital Administrator/Hospital Administrator I/Hospital Administrator II		51	2	4	4	6	6	4	7	84	76
Chief Hospital Foreman/Senior Hospital Foreman/ Hospital Foreman		9	5	8	5	5	8	13	13	66	64

TABLE 1 (Cont'd)

Zone	Grade	Headquarters & Health/Miscellaneous Services	Kowloon Hospital	Prince of Wales Hospital	Princess Margaret Hospital	Queen Elizabeth Hospital	Queen Mary Hospital	Medical Services	Mental Health Service	Total	Strength on 31.3.1986
	Laundry Manager/Assistant Laundry Manager	3				3				6	6
	Linen Production Unit Manager/Linen Production Unit Supervisor	5				1				6	6
	Machinist	69								69	69
	Medical Board Assistant	1								1	1
	Mortuary Supervisor			1	1	2	1	3		8	8
	Orthoptist I/Orthoptist II							5		5	5
	Senior Optical Technician/Optical Technician							7		7	7
	Photographer I/Photographer II			2	1	2	1	2		8	7
	Senior Prosthetist/Prosthetist I/Prosthetist II/Student Prosthetist	5		12		6		30		53	52
	Scientific Officer (Medical)			8	2	4		10		24	23
	Speech Therapist							3		3	3
	Tailor	3								3	3
	Senior Training Officer	1								1	1
	Assistant Transport Supervisor		1							2	2

TABLE 1 (Cont'd)

Zone	Grade	Headquarters & Health/Miscellaneous Services	Kowloon Hospital	Prince of Wales Hospital	Princess Margaret Hospital	Queen Elizabeth Hospital	Queen Mary Hospital	Medical Services	Mental Health Service	Total	Strength on 31.3.1986
	Administrative Officer Staff Grade 'B'/ Administrative Officer Staff Grade 'C'/ Administrative Officer	5+2@								5+2@	6
	Chauffeur	1								1	1
	*Principal Executive Officer/Chief Executive Officer/ Senior Executive Officer/Executive Officer I/ Executive Officer II	36+1@				1				37+1@	42
	Chinese Language Officer I/Chinese Language Officer II	3								3	3
	#*General Grade Staff	778	41	161	115	176	107	356	105	1839	1856
	Senior Health Inspector/Health Inspector I/ Health Inspector II	11								11	11
	Senior Statistician/Statistician/Statistical Officer I/ Statistical Officer II/Student Statistical Officer	23		1	1	2	1			28	28
	*Chief Supplies Officer/Senior Supplies Officer/ Supplies Officer/Assistant Supplies Officer/ Supplies Supervisor I/Supplies Supervisor II/ Supplies Assistant	43	6	12	10	11	6	29	12	129	129

TABLE 1 (Cont'd)

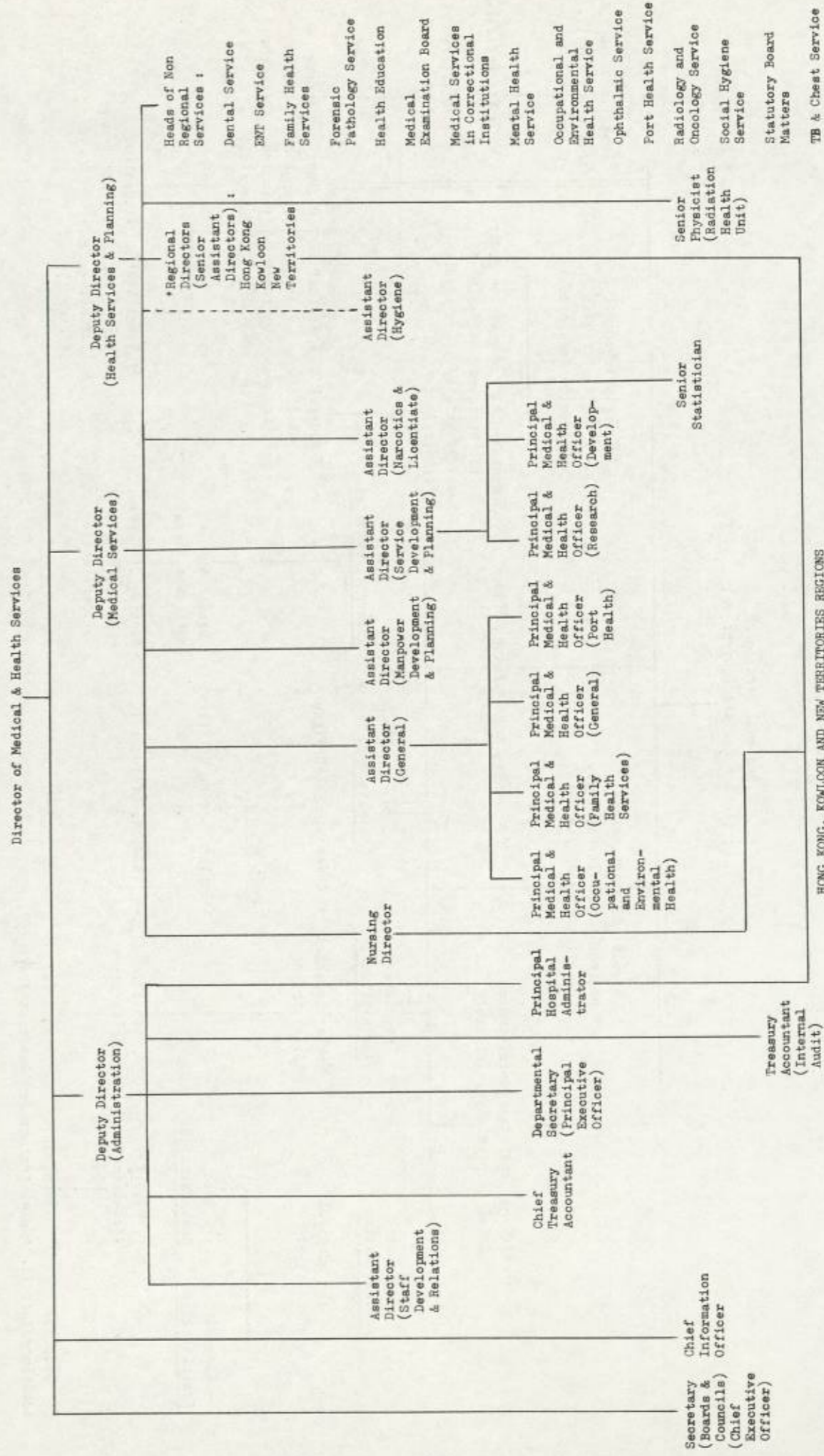
Grade	Zone	Headquarters & Health/Miscellaneous Services	Kowloon Hospital	Prince of Wales Hospital	Princess Margaret Hospital	Queen Elizabeth Hospital	Queen Mary Hospital	Medical Services	Mental Health Service	Total	Strength on 31.3.1986
*Telephone Operator		2	5	7	7	8	7	20	11	67	65
Chief Treasury Accountant/Senior Treasury Accountant/ Treasury Accountant/Accounting Officer I/ Accounting Officer II		17								17	17
*Minor Staff		975	479	1093	884	1325	879	1432	1150	8217	7994
Total		4229+3 [@]	1078	3454	2700	3914	2725	4219	2776	25095+3 [@]	24528

@ Supernumerary posts

* Excluding (680) supernumerary posts held against other posts

Excluding (10) supernumerary posts created for short leave replacement

TABLE 2 ORGANISATION OF MEDICAL & HEALTH DEPARTMENT - POSITION AS AT 31.3.1986



* Organisation of a Region is shown at Table 2(a)

TABLE 4 LEGISLATION OF MEDICAL AND HEALTH IMPORTANCE

APRIL 1985 to MARCH 1986

ORDINANCE

Medical Registration (Amendment) Ordinance 1985

Supplementary Medical Professions, Midwives Registration and Nurses Registration (Amendment) Ordinance 1985

RULES AND REGULATIONS

Dangerous Drugs Ordinance, Chapter 134 :

Dangerous Drugs (Amendment of First Schedule) Order 1985

Drug Addiction Treatment Centres Ordinance, Chapter 244 :

Drug Addiction Treatment Centre (Hei Ling Chau)(Amendment) Order 1985

Midwives Registration Ordinance, Chapter 162 :

Midwives (Registration and Disciplinary Procedure) (Amendment) Regulations 1985

Pneumoconiosis (Compensation) Ordinance, Chapter 360 :

Resolution amending the rate of levy

Resolution amending the Schedule

Resolution amending value of construction works not liable to levy

Radiation Ordinance, Chapter 303 :

Radiation (Control of Irradiating Apparatus) (Amendment) Regulations 1985

Resolution approving the Regulations

Radiation (Control of Radioactive Substances) (Amendment) Regulations 1985

Resolution approving the Regulations

TABLE 5 WORK OF STATUTORY COUNCILS - APRIL 1985 TO MARCH 1986

WORK	COUNCIL	MEDICAL		DENTAL			
		Local List	Overseas List	Local List	Dentists		Dental Hygienists
					Overseas List	Local List	
Number on the register on 31.3.1986		4 533	496	1 070	82	67	
Number of registrations	Registration (Full) Provisional Registration (Intern) Provisional Registration (Extern)	335 146 *88	34	129	17	8	
Number of examinations held	Multiple-Choice Question Paper Oral Written	*1 *1 *2	- - -	- - 1	- - -	- - -	
Number of candidates examined	Multiple-Choice Question Paper Oral Written	*479 *167 *145	- - -	- - 3	- - -	- - -	
Number of successful candidates	Multiple-Choice Question Paper Oral Written	*121 *85 *109	- - -	- - 3	- - -	- - -	
Disciplinary hearings held	No. of hearings No. of persons charged	9 5	- -	3 3	- -	- -	
Number of removals from register		108	46	41	18	-	

Number of Meetings held : Medical Council - 4
Dental Council - 4
Licentiate Committee & its Sub-Committees - 18

* Licentiate Scheme for unregistrable doctors

TABLE 6 WORK OF STATUTORY BOARDS - APRIL 1985 TO MARCH 1986

WORK	BOARD		Nursing						Midwives	Pharmacy & Poisons
	General	Mental	Registered			Enrolled				
			Mentally Sub-normal	Sick Children	General	Mental				
Number on the Register on 31.3.1986	14 401	767	6	1	5 155	413	8 589	564		
Number of applications for registration	1 025	89	-	-	499	61	310	76		
Number of registrations granted	1 012	89	-	-	499	61	308	48		
Number of examinations held	3	3	-	-	3	3	4	2		
Number of candidates examined	1 002	131	-	-	896	80	283	76		
Number of successful candidates	941	102	-	-	573	59	277	17		
Disciplinary hearings held	4	-	-	-	-	-	-	1		
No. of hearings	4	-	-	-	-	-	-	1		
No. of persons charged	-	-	-	-	-	-	-	-		
Appeal hearings held	-	-	-	-	-	-	-	-		
No. of appeals	2	-	-	-	-	-	-	17		
Number of removals from register	1	-	-	-	-	-	-	4		
Number of restoration to register	-	-	-	-	-	-	-	-		

Number of Meetings held : Nursing Board - 3
 Midwives Board - 4
 Pharmacy and Poisons Board - 1
 Poisons Committee - 2

TABLE 6(a) SUPPLEMENTARY MEDICAL PROFESSIONS COUNCIL
 APRIL 1985 TO MARCH 1986

Number of meetings held :-

Supplementary Medical Professions Council	1
Supplementary Medical Professions Council Working Party	1
Medical Laboratory Technicians Board	-
Physiotherapists Board	1
Radiographers Board	3
Occupational Therapists Board	-
Occupational Therapists Board Working Party	-

TABLE 6(b) DETAILS OF LICENCES ISSUED BY THE RADIATION BOARD
 APRIL 1985 TO MARCH 1986

	Irradiating Apparatus		Radioactive Substances
	Possess & Operate	Possess	
Total number of licences remained in force as at 31.3.1986	896	109	636
Number of applications for licences	240	-	120
Number of new licences granted	176	207	135
Number of licences cancelled	89	161	53

TABLE 7 ESTIMATED POPULATION BY AGE GROUP AT MID-1985

Age Group	Male	Female	Total
0	40 600	37 700	78 300
1 - 4	178 200	166 400	344 600
5 - 9	212 400	197 000	409 400
10 - 14	221 100	203 400	424 500
15 - 19	236 300	219 800	456 100
20 - 24	299 400	284 900	584 300
25 - 29	314 200	291 500	605 700
30 - 34	257 900	231 900	489 800
35 - 39	213 400	180 400	393 800
40 - 44	132 200	104 200	236 400
45 - 49	145 800	117 100	262 900
50 - 54	141 800	122 200	264 000
55 - 59	132 200	119 300	251 500
60 - 64	102 300	99 400	201 700
65 - 69	79 900	84 000	163 900
70 - 74	52 100	64 900	117 000
75 - 79	28 000	46 100	74 100
80 & over	18 300	46 500	64 800
Total	2 806 100	2 616 700	5 422 800

TABLE 8 VITAL STATISTICS - HONG KONG (Absolute Number)

Year	Population* (1)	Registered# Live Births (2)	Registered# Deaths (3)	Late Foetal Deaths (Still Births) (4)	Early@ Neo Deaths (5)	Late@ Neo Deaths (6)	Post@ Neo Deaths (7)	Peri-@ Natal Deaths (8) = (4) + (5)	Neo-@ Natal Deaths (9) = (5) + (6)	Infant# Deaths (10) = (5) + (6) + (7)	Maternal Deaths (11)
1956	2 614 600	96 746	19 295	988	1 303	1 039	3 553	2 291	2 342	5 895	88
1957	2 736 300	97 834	19 365	1 245	1 323	1 007	3 106	2 568	2 330	5 436	105
1958	2 854 100	106 624	20 554	1 297	1 413	1 079	3 294	2 710	2 492	5 786	92
1959	2 967 400	104 579	20 250	1 393	1 335	888	2 831	2 728	2 223	5 054	77
1960	3 075 300	110 667	19 146	1 680	1 309	1 003	2 279	2 989	2 312	4 591	55
1961	3 168 100	108 726 (110 884)	18 738 (19 325)	1 683	1 226	1 054	1 818	2 909	2 280	4 098	50
1962	3 305 200	111 905 (112 503)	20 324 (20 933)	1 560	1 260	1 109	1 761	2 820	2 369	4 130	54
1963	3 420 900	115 263 (114 550)	19 748 (20 340)	1 633	1 206	972	1 623	2 839	2 178	3 801	34
1964	3 504 600	108 519 (107 625)	18 113 (18 657)	1 485	1 115	684	1 071	2 600	1 799	2 870	42
1965	3 597 900	102 195 (101 110)	17 621 (18 150)	1 363	1 017	537	871	2 380	1 554	2 425	34
1966	3 629 900	92 476 (91 832)	18 700 (19 261)	1 246	1 011	407	882	2 257	1 418	2 300	40
1967	3 722 800	88 171 (88 215)	19 644 (20 234)	999	958	440	862	1 957	1 398	2 260	27
1968	3 802 700	82 992 (82 685)	19 319 (19 444)	832	843	404	664	1 675	1 247	1 911	12
1969	3 863 900	79 329 (82 482)	18 730 (19 256)	757	810	373	548	1 567	1 183	1 731	12
1970	3 959 000	77 465 (79 132)	20 763 (19 996)	726	734	252	535	1 460	986	1 521	15
1971	4 045 300	76 818 (79 789)	20 253 (20 374)	656	716	254	440	1 372	970	1 410 (1 415)	11
1972	4 115 700	79 053 (80 344)	21 145 (21 397)	736	740	174	466	1 476	914	1 380 (1 396)	16
1973	4 212 600	80 147 (82 252)	21 360 (21 251)	681	724	157	464	1 405	881	1 345 (1 351)	8
1974	4 319 600	81 879 (83 581)	22 050 (21 879)	621	717	184	520	1 338	901	1 421 (1 407)	13
1975	4 395 800	78 200 (79 790)	21 191 (21 597)	565	671	133	369	1 236	804	1 173 (1 192)	2
1976	4 443 800	76 342 (78 486)	23 195 (22 692)	521	564	127	401	1 085	691	1 092 (1 077)	14
1977	4 509 800	78 807 (80 022)	23 459 (23 346)	528	565	140	388	1 093	705	1 093 (1 081)	13
1978	4 597 000	79 173 (80 957)	22 843 (23 830)	431	539	115	280	970	654	934 (956)	5
1979	4 878 600	82 157 (81 975)	26 179 (25 125)	389	570	124	398	959	694	1 092 (1 011)	7
1980	5 038 500	85 406 (85 290)	25 987 (25 008)	483	532	135	341	1 015	667	1 008 (956)	4
1981	5 154 100	87 104 (86 632)	24 978 (24 678)	475	471	104	271	946	575	846 (839)	7
1982	5 232 900	86 036 (86 160)	25 460 (25 262)	438	482	116	255	920	598	853 (854)	1
1983	5 313 200	82 015 (83 356)	26 485 (26 255)	386	465	109	256	851	574	830 (822)	6
1984	5 364 000	77 635 (77 122)	25 580 (25 484)	330	393	109	207	723	502	709 (683)	5
1985	5 422 800	76 433 (76 238)	25 325 (25 303)	295	296	83	201	591	379	580 (572)	4

* Based on Population Censuses and By-Censuses results.
 # Figures in brackets denote adjusted births and deaths for 1961-1968 and known births and deaths for 1969-1985.
 @ Figures adjusted according to computer tabulations for 1976-1985.

TABLE 9 VITAL STATISTICS - HONG KONG (Rate)

Year	Crude* Birth Rate (1)	Crude* Death Rate (2)	Late Foetal Mort (3)	Early# Neo Mort (4)	Late# Neo Mort (5)	Post# Neo Mort (6)	Peri-# Natal Mort (7)	Neo-# Natal Mort (8) = (4) + (5)	Infant* Mort (9) = (4) + (5) + (6)	Maternal Mort (10)
1956	37.0	7.4	10.1	13.5	10.7	36.7	23.4	24.2	60.9	0.90
1957	35.8	7.1	12.6	13.5	10.3	31.8	25.9	23.8	55.6	1.06
1958	37.4	7.2	12.0	13.3	10.1	30.9	25.1	23.4	54.3	0.85
1959	35.2	6.8	13.1	12.8	8.5	27.1	25.7	21.3	48.3	0.73
1960	36.0	6.2	15.0	11.8	9.1	20.6	26.6	20.9	41.5	0.49
1961	34.3 (35.0)	5.9 (6.1)	15.2	11.3	9.7	16.7	26.3	21.0	37.7	0.45
1962	33.9 (34.0)	6.1 (6.3)	13.7	11.3	9.9	15.7	24.9	21.2	36.9	0.48
1963	33.7 (33.5)	5.8 (6.0)	14.0	10.5	8.4	14.1	24.3	18.9	33.0	0.29
1964	31.0 (30.7)	5.2 (5.3)	13.5	10.3	6.3	9.9	23.6	16.6	26.4	0.38
1965	28.4 (28.1)	4.9 (5.0)	13.2	10.0	5.3	8.5	23.0	15.2	23.7	0.33
1966	25.5 (25.3)	5.2 (5.3)	13.3	10.9	4.4	9.5	24.1	15.3	24.9	0.43
1967	23.7 (23.7)	5.3 (5.4)	11.2	10.9	5.0	9.8	21.9	15.9	25.6	0.30
1968	21.8 (21.7)	5.1 (5.1)	9.9	10.2	4.9	8.0	20.0	15.0	23.0	0.14
1969	20.5 (21.3)	4.8 (5.0)	9.5	10.2	4.7	6.9	19.6	14.9	21.8	0.15
1970	19.6 (20.0)	5.2 (5.1)	9.3	9.5	3.3	6.9	18.7	12.7	19.6	0.19
1971	19.0 (19.7)	5.0 (5.0)	8.5	9.3	3.3	5.7	17.7	12.6	18.4 (17.7)	0.14
1972	19.2 (19.5)	5.1 (5.2)	9.2	9.4	2.2	5.9	18.5	11.6	17.5 (17.4)	0.20
1973	19.0 (19.5)	5.1 (5.0)	8.4	9.0	2.0	5.8	17.4	11.0	16.8 (16.4)	0.10
1974	19.0 (19.3)	5.1 (5.1)	7.5	8.8	2.2	6.4	16.2	11.0	17.4 (16.8)	0.16
1975	17.8 (18.2)	4.8 (4.9)	7.2	8.6	1.7	4.7	15.7	10.3	15.0 (14.9)	0.03
1976	17.2 (17.7)	5.2 (5.1)	6.8	7.4	1.7	5.3	14.1	9.1	14.3 (13.7)	0.18
1977	17.5 (17.7)	5.2 (5.2)	6.7	7.2	1.8	4.9	13.8	8.9	13.9 (13.5)	0.16
1978	17.2 (17.6)	5.0 (5.2)	5.4	6.8	1.5	3.5	12.2	8.3	11.8 (11.8)	0.06
1979	16.8 (17.0)	5.4 (5.2)	4.7	6.9	1.5	4.8	11.6	8.4	13.3 (12.3)	0.08
1980	17.0 (17.1)	5.2 (5.0)	5.6	6.2	1.6	4.0	11.8	7.8	11.8 (11.2)	0.05
1981	16.9 (16.9)	4.8 (4.8)	5.4	5.4	1.2	3.1	10.8	6.6	9.7 (9.7)	0.08
1982	16.4 (16.5)	4.9 (4.8)	5.1	5.6	1.3	3.0	10.6	7.0	9.9 (9.9)	0.01
1983	15.4 (15.7)	5.0 (4.9)	4.7	5.7	1.3	3.1	10.3	7.0	10.1 (9.9)	0.07
1984	14.5 (14.4)	4.8 (4.8)	4.2	5.0	1.4	2.7	9.3	6.5	9.1 (8.9)	0.06
1985	14.1 (14.1)	4.7 (4.7)	3.8	3.9	1.1	2.6	7.7	5.0	7.6 (7.5)	0.05

Rates: (1) & (2) : per 1 000 population; (4), (5), (6), (8) & (9) : per 1 000 live births;
(3), (7) & (10) : per 1 000 total births

Figures adjusted according to computer tabulations for 1976-1985.

* Figures in brackets were calculated by using adjusted births & deaths figures for 1961-1968 and known births & deaths for 1969-1985.

TABLE 10 HONG KONG DEATH RATES 1971 TO 1985 (Deaths per 1 000 population)

Rate	Year	1971	1972	1973	1974	1975	1976	1977	1978	1979	1980	1981	1982	1983	1984	1985
Standardised* Death Rate		11.82	11.83	11.09	10.87	10.29	11.14	10.86	10.13	10.53	9.99	9.23	8.95	8.95	8.27	7.84
Crude Death Rate		5.01	5.14	5.07	5.10	4.82	5.22	5.20	4.97	5.37	5.16	4.85	4.87	4.98	4.77	4.67
Age Specific Death Rate	0	18.65	17.51	16.58	17.33	14.34	14.31	13.78	11.87	13.06	12.06	9.96	9.65	9.63	8.66	7.41
	1 - 4	0.95	0.95	1.07	1.10	0.77	0.84	0.78	0.62	1.01	0.69	0.54	0.42	0.55	0.45	0.39
	5 - 9	0.41	0.44	0.39	0.39	0.39	0.41	0.32	0.23	0.34	0.29	0.22	0.24	0.19	0.24	0.21
	10 - 14	0.36	0.35	0.38	0.36	0.28	0.32	0.33	0.27	0.30	0.29	0.32	0.26	0.25	0.22	0.22
	15 - 19	0.59	0.65	0.65	0.54	0.45	0.57	0.46	0.37	0.51	0.47	0.40	0.40	0.39	0.32	0.32
	20 - 24	0.87	0.99	0.98	0.95	0.74	0.80	0.73	0.61	0.87	0.81	0.59	0.58	0.56	0.49	0.43
	25 - 29	1.26	1.12	1.37	1.18	0.91	1.02	1.01	0.78	1.12	1.00	0.81	0.72	0.61	0.59	0.57
	30 - 34	1.54	1.49	1.66	1.73	1.24	1.60	1.17	1.11	1.30	1.25	1.02	0.93	0.78	0.81	0.72
	35 - 39	2.08	2.13	2.03	1.81	1.61	1.84	1.87	1.56	1.73	1.65	1.40	1.31	1.19	1.00	1.05
	40 - 44	3.28	3.22	3.20	3.08	2.89	2.88	2.80	2.23	2.73	2.39	2.29	2.39	2.16	2.05	1.85
	45 - 49	4.73	4.82	4.66	4.59	4.14	4.65	4.32	3.93	4.37	4.11	3.83	3.71	3.34	3.31	3.13
	50 - 54	8.07	7.42	7.90	7.35	6.83	7.12	6.48	6.66	6.65	6.23	5.92	6.05	5.94	5.52	5.58
	55 - 59	12.67	10.57	11.36	10.98	10.91	10.97	10.79	10.24	10.87	10.72	9.57	9.20	9.28	8.53	8.35
	60 - 64	19.40	19.99	19.71	18.70	17.15	18.10	17.94	15.83	16.59	15.32	14.80	15.16	15.57	14.58	13.68
	65 - 69	28.64	27.66	26.47	26.55	25.92	28.12	27.80	26.14	26.92	25.47	23.57	22.48	22.62	21.39	20.53
	70 - 74	41.67	41.75	38.69	38.69	36.41	39.99	38.18	37.54	38.06	36.01	34.35	34.57	36.62	34.52	33.01
	75 - 79	61.65	60.57	53.53	53.54	53.73	61.01	57.98	53.26	56.12	53.69	51.49	48.92	47.07	45.34	42.67
	80+	106.41	111.74	104.89	103.62	99.87	106.01	109.82	103.92	105.57	102.22	93.98	90.00	91.44	80.51	75.90

*Basing on population figures for England and Wales 1980 (Reference : United Nations Demographic Year-Book 1981)

TABLE 11 MAJOR CAUSES OF INFANT DEATHS 1981 TO 1985

Disease Group	Detailed List No. 9th Revision (1975)	1981	1982	1983	1984	1985
Meningitis	320,322	8	15	8	1	4
Bronchitis	466, 490-491	1	3	3	-	-
Viral pneumonia	480	3	4	1	-	1
Pneumococcal pneumonia	481	1	-	-	-	-
Other bacterial pneumonia	482	-	-	-	-	-
Pneumonia due to other specified organism	483	-	-	-	-	-
Bronchopneumonia, organism unspecified	485	29	28	50	35	22
Pneumonia, organism specified	486	34	21	21	14	11
Gastroenteritis, colitis & other diarrhoeal disease	558, 009	13	6	1	-	-
Congenital anomalies	740-759	221	240	254	236	203
Obstetric complications & birth trauma	761-763, 767	6	2	6	2	3
Intrauterine hypoxia and birth asphyxia	768	103	86	73	65	50
Respiratory distress syndrome	769	115	123	107	95	49
Other respiratory conditions of fetus and newborn	770	58	64	71	56	39
Slow fetal growth and fetal malnutrition	764	-	-	-	-	-
Disorders relating to short gestation and unspecified low birthweight	765	82	61	76	43	66

TABLE 11 (Cont'd)

Disease Group	Detailed List No. 9th Revision (1975)	1981	1982	1983	1984	1985
Fetus or newborn affected by maternal conditions which may be unrelated to present pregnancy	760	-	-	-	-	-
Disorders relating to long gestation and high birthweight	766	-	-	-	-	-
Infections specific to perinatal period	771	6	16	20	17	19
Fetal and neonatal haemorrhage	772	38	66	22	28	11
Haemolytic disease of fetus or newborn due to isoimmunization and other perinatal jaundice	773-774	6	3	6	5	2
Endocrine and metabolic disturbances specific to the fetus and newborn	775	1	2	-	1	5
Haematological disorders of fetus and newborn	776	7	9	5	6	4
Perinatal disorders of digestive system	777	6	4	9	9	5
Conditions involving the integument and temperature regulation of fetus and newborn	778	19	27	29	28	24
Other and ill-defined conditions originating in the perinatal period	779	-	-	-	-	-
Others	Residues of 001-999	89	73	68	68	62
All Causes	001-999	846	853	830	709	580

TABLE 12 NEONATAL AND POST NEONATAL DEATHS BY CAUSE 1981 TO 1985

Disease Group	Detailed List No. 9th Revision	1981	1982	1983	1984	1985
<u>Neonatal Deaths (Birth - under 4 weeks)</u>						
All causes	001-999	575	598	574	502	379
Congenital abnormalities	740-759	127	148	151	164	120
Short gestation or unspecified low birthweight	765, 769	187	179	173	132	104
Asphyxia and trauma during labour	767-768	100	86	76	67	51
Other specific perinatal disorders (e.g. infections, blood group incompatibilities etc)	760-764, 766, 773-779	37	40	48	45	37
All other causes	Residue of 001-999	124	145	126	94	67
<u>Post Neonatal Deaths (4 weeks - under 1 year)</u>						
All causes	001-999	271	255	256	207	201
Determined in the 'Perinatal Period':						
Congenital abnormalities	740-759	94	92	103	72	83
Short gestation or unspecified low birthweight	765, 769	10	5	10	6	11
Birth trauma, asphyxia; and intra-uterine hypoxia	767-768	7	1	2	-	-
Other perinatal disorder (e.g. infections, haemolytic disease etc)	760-764, 766, 770-779	11	20	6	19	15
Acquired after Birth:						
Neoplasms	140-239	3	6	3	3	5
Sudden unexpected death	798	5	4	6	3	4
Injury and Poisoning	800-999	28	11	5	16	11
Other acquired diseases	001-139, 240-739, 780-797, 799	113	116	121	88	72

TABLE 13 MAJOR CAUSES OF MATERNAL DEATHS 1961, 1975 AND 1981 TO 1985

Detailed list No. 9th (1975) Revision	Pregnancy with abortive outcome other than spontaneous or legally induced abortion	Toxaemia of pregnancy	Haemorrhage of pregnancy & childbirth	Major puerperal infection	Ectopic pregnancy	Total	
						Others	Remainder of 630-676
Year	630-632 636-639	642,643	640, 641 & 666	670	633		
1961*	4	10	17	2	3	14	50
1975#	-	-	1	-	-	1	2
1981	-	1	3	-	1	2	7
1982	-	-	1	-	-	-	1
1983	-	2	2	-	-	2	6
1984	1	-	1	-	3	-	5
1985	-	2	1	-	-	1	4

* Data regrouped according to ICD 8th Revision (1965)

Data regrouped according to ICD 9th Revision (1975)

TABLE 14 PROPORTIONATE MORTALITY BY DISEASE GROUP 1961, 1975 AND 1981 TO 1985
(As Percentage of Total Deaths)

Disease Group	Detailed List No. 9th Revision	1961*	1975#	1981	1982	1983	1984	1985
Infective and parasitic	001 - 139	16.2	4.0	3.1	3.1	3.0	3.0	3.0
Neoplasms	140 - 239	12.3	24.2	26.4	26.8	27.3	28.8	29.8
Endocrine, nutritional, metabolic, immunity disorders and blood	240 - 289	0.9	1.5	1.3	0.9	1.0	1.1	1.1
Nervous system, sense organs and mental disorders	290 - 389	0.8@	0.9	0.7	0.8	0.9	0.7	0.8
Circulatory system	390 - 459	18.2	27.7	28.9	29.3	29.3	29.1	29.2
Respiratory system	460 - 519	16.3	15.8	15.8	15.8	16.9	16.5	16.3
Digestive system	520 - 579	7.7	4.6	4.3	4.6	4.3	4.3	4.3
Genitourinary system	580 - 629	2.0	3.2	3.9	4.1	4.0	4.3	4.4
Pregnancy, childbirth and puerperium	630 - 676	0.3	+	+	+	+	+	+
Skin, subcutaneous tissue and musculo-skeletal system	680 - 739	0.2	0.3	0.2	0.2	0.2	0.2	0.3
Congenital anomalies and conditions originating in the perinatal period	740 - 779	8.8	4.4	2.8	2.9	2.8	2.5	2.0
Symptoms, signs and ill-defined conditions	780 - 799	10.4	6.7	4.8	4.2	3.9	3.3	2.5
Injury and poisoning	800 - 999	5.9	6.7	7.8	7.3	6.4	6.2	6.3
All causes	001 - 999	100.0	100.0	100.0	100.0	100.0	100.0	100.0

@ Excluding Cerebrovascular Disease (formerly Vascular Lesion Affecting Central Nervous System under the Nervous System and Sense Organs) : 7.5% in 1961

Data regrouped according to I.C.D. 9th Revision (1975)

* Data regrouped according to I.C.D. 8th Revision (1965)

+ Denote less than 0.05

TABLE 15 THE TEN LEADING CAUSES OF DEATH BY AGE AND SEX 1985

Rank	Cause of Death	Detailed List No. 9th Revision	Sex	Age Group							
				All ages	0	1-4	5-14	15-44	45-64	65+	Unknown
1	All causes	001-999	M	14 073	322	76	98	1 299	4 852	7 412	14
			F	11 241	255	57	79	645	2 305	7 895	5
			X	11	3	-	-	-	-	-	8
			T	25 325	580	133	177	1 944	7 157	15 307	27
2	Malignant neoplasms	140-208	M	4 590	2	3	19	414	2 124	2 028	-
			F	2 945	3	9	23	224	1 008	1 677	1
			T	7 535	5	12	42	638	3 132	3 705	1
3	Heart diseases, including hypertensive heart disease	390-429	M	2 211	1	2	7	69	709	1 421	2
			F	2 000	2	2	4	35	332	1 625	-
			T	4 211	3	4	11	104	1 041	3 046	2
4	Cerebrovascular disease	430-438	M	1 425	1	-	1	62	447	911	3
			F	1 534	1	1	1	31	254	1 246	-
			T	2 959	2	1	2	93	701	2 157	3
5	Pneumonia, all forms	480-486	M	816	18	10	5	25	158	599	1
			F	818	16	5	4	14	72	707	-
			T	1 634	34	15	9	39	230	1 306	1
6	Injury and poisoning	800-999	M	992	5	23	33	475	264	190	2
			F	611	8	20	25	199	156	202	1
			T	1 603	13	43	58	674	420	392	3
6	Nephritis, nephrotic syndrome and nephrosis	580-589	M	416	2	2	2	35	127	247	1
			F	496	-	-	1	29	129	337	-
			T	912	2	2	3	64	256	584	1

TABLE 15 (Cont'd)

Rank	Cause of Death	Detailed List No. 9th Revision	Sex	Age Group							
				All ages	0	1-4	5-14	15-44	45-64	65+	Unknown
7	Bronchitis, chronic and unspecified, emphysema & asthma	490-493	M	410	-	-	3	22	141	243	1
			F	219	-	-	1	7	30	181	-
			T	629	-	-	4	29	171	424	1
8	Tuberculosis (including late effects of tuberculosis)	010-018, 137	M	321	-	-	-	19	134	168	-
			F	88	-	-	-	7	17	64	-
			T	409	-	-	-	26	151	232	-
9	Chronic liver diseases and cirrhosis	571	M	221	-	-	-	16	131	74	-
			F	100	-	-	1	3	26	70	-
			T	321	-	-	1	19	157	144	-
10	Certain conditions originating in the perinatal period	760-779	M	157	157	-	-	-	-	-	-
			F	118	118	-	-	-	-	-	-
			X	2	2	-	-	-	-	-	-
Diabetes mellitus	250	M	100	-	-	-	1	33	66	-	
		F	133	-	-	-	1	36	96	-	
		T	233	-	-	-	2	69	162	-	
Congenital anomalies	740-759	M	129	111	12	2	4	-	-	-	
		F	101	91	6	2	1	1	-	-	
		X	1	1	-	-	-	-	-	-	
All other causes	Residue of 001-999	M	285	25	24	26	157	584	1 465	4	
		F	2 078	16	14	17	94	244	1 690	3	
		X	8	-	-	-	-	-	-	8	
			T	4 371	41	38	43	251	3 155	15	

Note : X indicates unknown sex

TABLE 15(a) SUPPLEMENTARY CLASSIFICATION OF EXTERNAL CAUSES OF INJURY AND POISONING 1985

External Cause of Death	Detailed List No. 9th Revision	Sex	Age Group							
			All ages	0	1-4	5-14	15-44	45-64	65+	Unknown
All accidents, poisonings and violence	E800-E999	M	1 016	5	23	35	481	273	197	2
		F	621	8	20	27	203	156	206	1
		T	1 637	13	43	62	684	429	403	3
Transport accidents	E800-E848	M	186	1	2	12	91	38	42	-
		F	115	-	4	5	17	34	55	-
		T	301	1	6	17	108	72	97	-
Accidental poisonings	E850-E869	M	24	-	-	-	14	7	3	-
		F	12	-	-	1	6	3	2	-
		T	36	-	-	1	20	10	5	-
Other accidents, misadventures & adverse effect	E870-E949	M	276	3	18	19	115	70	50	1
		F	116	7	10	11	18	15	55	-
		T	392	10	28	30	133	85	105	1
Suicide and self-inflicted injury	E950-E959	M	410	-	-	1	195	124	90	-
		F	304	-	-	2	129	91	82	-
		T	714	-	-	3	324	215	172	-
Homicide and injury purposely inflicted by other persons	E960-E969	M	49	-	2	2	27	13	5	-
		F	31	-	6	5	13	4	3	-
		T	80	-	8	7	40	17	8	-
Other violence	E970-E999	M	71	1	1	1	39	21	7	1
		F	43	1	-	3	20	9	9	1
		T	114	2	1	4	59	30	16	2

TABLE 16 LEADING CAUSES OF DEATH 1961, 1975 AND 1985 (Ranking According to 1985 Data)

Cause of Death	Number of Deaths			Percentage of Deaths from all causes			Rate per 100 000 population		
	1961*	1975#	1985	1961*	1975#	1985	1961*	1975#	1985
<u>All ages</u>									
All causes	18 738	21 191	25 325	100.0	100.0	100.0	591.5	482.1	467.0
1. Malignant neoplasms	2 280	5 105	7 535	12.2	24.1	29.8	72.0	116.1	138.9
2. Heart diseases, including hypertensive heart disease	1 866	3 312	4 211	9.9	15.6	16.6	58.9	75.3	77.7
3. Cerebrovascular disease	1 401	2 336	2 959	7.5	11.0	11.7	44.2	53.2	54.6
4. Pneumonia, all forms	2 665	2 188	1 634	14.2	10.3	6.5	84.1	49.8	30.1
5. Injury and poisoning	1 100	1 420	1 603	5.9	6.7	6.3	34.7	32.3	29.6
All other causes	9 426	6 830	7 383	50.3	32.3	29.1	297.6	155.4	136.1
<u>0 years</u>									
All causes	4 098	1 173	580	100.0	100.0	100.0	3 840.7	1 434.0	740.7
1. Congenital anomalies	157	324	203	3.8	27.6	35.0	147.1	396.1	259.3
2. Hypoxia, birth asphyxia & other respiratory conditions	142	141	138	3.4	12.0	23.8	133.1	172.4	176.2
3. Haemolytic disease of fetus or newborn, perinatal jaundice & other causes of perinatal morbidity	204	134	70	5.0	11.4	12.1	191.2	163.8	89.4
4. Immaturity	1 142	214	66	27.9	18.3	11.4	1 070.3	261.6	84.3
5. Pneumonia, all forms	1 166	156	34	28.5	13.3	5.8	1 092.8	190.7	43.4
All other causes	1 287	204	69	31.4	17.4	11.9	1 206.2	249.4	88.1

TABLE 16 (Cont'd)

Cause of Death	Number of Deaths			Percentage of Deaths from all causes			Rate per 100 000 population		
	1961*	1975#	1985	1961*	1975#	1985	1961*	1975#	1985
<u>1-4 years</u>									
All causes	1 805	248	133	100.0	100.0	100.0	427.5	77.5	38.6
1. Injury and poisoning	107	72	43	5.9	29.0	32.3	25.3	22.5	12.5
2. Diseases of nervous system	18	15	21	1.0	6.0	15.8	4.3	4.7	6.1
3. Congenital anomalies	14	35	18	0.8	14.1	13.5	3.3	10.9	5.2
4. Pneumonia, all forms	603	48	15	33.4	19.4	11.3	142.8	15.0	4.3
5. Malignant neoplasms	18	23	12	1.0	9.3	9.0	4.3	7.2	3.5
All other causes	1 045	55	24	57.9	22.2	18.1	247.5	17.2	7.0
<u>5-14 years</u>									
All causes	587	325	177	100.0	100.0	100.0	77.7	33.1	21.2
1. Injury and poisoning	177	127	58	30.2	39.1	32.8	23.4	12.9	7.0
2. Malignant neoplasms	40	60	42	6.8	18.5	23.7	5.3	6.1	5.0
3. Diseases of nervous system	29	13	22	4.9	4.0	12.4	3.8	1.3	2.6
4. Heart disease, including hypertensive heart disease	33	14	11	5.6	4.3	6.2	0.5	1.4	1.3
5. Pneumonia, all forms	83	28	9	14.1	8.6	5.1	11.0	2.9	1.1
All other causes	225	83	35	38.4	25.5	19.8	33.6	8.5	4.2

TABLE 16 (Cont'd)

Cause of Death	Number of Deaths			Percentage of Deaths from all causes			Rate per 100 000 population		
	1961*	1975#	1985	1961*	1975#	1985	1961*	1975#	1985
<u>15-44 years</u>									
All causes	2 665	2 221	1 944	100.0	100.0	100.0	201.6	112.4	70.3
1. Injury and poisoning	465	540	674	17.4	24.3	34.7	35.2	27.3	24.4
2. Malignant neoplasms	512	661	638	19.2	29.8	32.8	38.7	33.5	23.1
3. Heart diseases, including hypertensive heart disease	246	176	104	9.2	7.9	5.3	18.6	8.9	3.7
4. Cerebrovascular Diseases	74	82	93	2.8	3.7	4.8	5.6	4.2	3.4
5. Nephritis, nephrotic syndrome and nephrosis	75	125	64	2.8	5.6	3.3	5.7	6.3	2.3
All other causes	1 293	637	371	48.6	28.7	19.1	97.8	32.2	13.4
<u>45-64 years</u>									
All causes	5 041	7 059	7 157	100.0	100.0	100.0	1 089.9	880.1	730.2
1. Malignant neoplasms	1 204	2 560	3 132	23.9	36.3	43.8	260.3	319.2	319.6
2. Heart diseases, including hypertensive heart disease	762	1 103	1 041	15.1	15.6	14.5	164.8	137.5	106.2
3. Cerebrovascular disease	569	766	701	11.3	10.9	9.8	123.0	95.5	71.5
4. Injury and poisoning	216	406	420	4.3	5.7	5.9	46.7	50.6	42.8
5. Pneumonia, all forms	278	475	230	5.5	6.7	3.2	60.1	59.2	23.5
All other causes	2 012	1 749	1 633	39.9	24.8	22.8	435.0	218.1	166.6

TABLE 16 (Cont'd)

Cause of Death	Number of Deaths			Percentage of Deaths from all causes			Rate per 100 000 population		
	1961*	1975#	1985	1961*	1975#	1985	1961*	1975#	1985
<u>65-years and over</u>									
All causes	4 524	10 147	15 307	100.0	100.0	100.0	4 519.5	4 340.0	3 646.3
1. Malignant neoplasms	503	1 798	3 705	11.1	17.7	24.2	502.5	769.0	882.6
2. Heart diseases, including hypertensive heart disease	817	2 011	3 046	18.1	19.8	19.9	816.2	860.1	725.6
3. Cerebrovascular disease	747	1 475	2 157	16.5	14.5	14.1	746.3	630.9	513.8
4. Pneumonia, all forms	435	1 369	1 306	9.6	13.5	8.5	434.6	585.6	311.1
5. Nephritis, nephrotic syndrome and nephrosis	88	238	584	1.9	2.4	3.8	87.9	101.8	139.1
All other causes	1 934	3 256	4 509	42.8	32.1	29.5	1 932.1	1 392.6	1 074.1

* Data regrouped according to ICD 8th Revision (1965)

Data regrouped according to ICD 9th Revision (1975)

TABLE 17 NUMBER OF CANCER DEATHS BY AGE AND SEX 1985

T-List	Detailed List Number 9th Revision	Cause Group	Sex	All Ages	0-9	10-	20-	30-	35-	40-	45-	50-	55-	60-	65-	70-	75+	Unk
T080 (part)	147	Malignant neoplasm of nasopharynx	M	316	-	2	8	15	27	31	37	55	41	34	30	23	13	-
			F	94	-	-	2	2	6	10	14	12	11	10	8	7	12	-
T090	150	Malignant neoplasm of oesophagus	M	319	-	-	-	1	-	7	24	27	55	64	57	51	33	-
			F	65	-	-	-	-	1	-	1	3	8	5	11	14	22	-
T091	151	Malignant neoplasm of stomach	M	265	-	-	1	2	2	6	6	28	30	46	50	46	48	-
			F	184	-	-	6	3	5	7	11	11	21	17	30	24	49	-
T093	153	Malignant neoplasm of colon	M	217	-	1	6	3	6	5	9	20	26	25	30	39	47	-
			F	231	-	-	3	2	1	6	8	8	40	27	27	35	74	-
T094	154	Malignant neoplasm of rectum, rectosigmoid junction and anus	M	140	-	-	6	-	3	4	9	18	24	17	17	19	23	-
			F	104	-	-	-	4	1	1	4	8	8	8	13	21	36	-
T095	155	Malignant neoplasm of liver and intrahepatic bile ducts	M	740	-	2	8	19	31	34	78	109	108	123	105	68	55	-
			F	229	1	3	3	2	3	9	13	13	18	31	39	41	52	1
T096	157	Malignant neoplasm of pancreas	M	110	-	1	-	1	3	2	7	5	18	16	16	19	22	-
			F	101	-	-	-	-	-	2	-	6	11	18	15	19	30	-
T100	161	Malignant neoplasm of larynx	M	78	-	-	-	-	-	1	5	8	12	18	9	11	14	-
			F	7	-	-	-	-	-	-	1	1	1	-	1	3	-	-
T101	162	Malignant neoplasm of trachea, bronchus and lung	M	1457	-	-	6	7	14	19	56	149	210	248	269	260	219	-
			F	766	-	-	4	2	9	7	12	40	61	110	138	140	243	-

TABLE 17 (Cont'd)

T-List	Detailed List Number 9th Revision	Cause Group	Sex	All Ages	0-9	10-	20-	30-	35-	40-	45-	50-	55-	60-	65-	70-	75+	Unk
T110	170	Malignant neoplasm of bone and articular cartilage	M	23	-	1	3	1	-	-	1	1	4	2	3	6	1	-
			F	21	-	3	-	1	1	-	1	4	-	2	3	1	5	-
T112	172	Malignant melanoma of skin	M	3	-	-	-	-	-	-	-	1	-	1	-	-	1	-
			F	4	-	-	-	-	-	-	-	2	-	1	-	1	-	-
T113	173	Other malignant neoplasm of skin	M	4	-	-	-	-	-	-	-	-	1	-	1	1	-	-
			F	6	-	-	-	-	-	-	1	-	-	-	2	1	2	-
T114	174	Malignant neoplasm of female breast	F	262	-	-	1	4	13	6	28	33	38	25	32	32	50	-
T120	180	Malignant neoplasm of cervix uteri	F	141	-	-	2	-	4	4	10	23	25	18	20	14	21	-
T122	179, 182	Malignant neoplasm of uterus, other and unspecified	F	44	-	-	-	-	-	-	2	4	5	6	10	5	12	-
T123	183	Malignant neoplasm of ovary and other uterine adnexa	F	91	-	1	2	3	2	3	5	14	9	16	8	9	19	-
T124	185	Malignant neoplasm of prostate	M	53	-	1	1	-	-	-	-	-	5	5	7	9	25	-
T125	186	Malignant neoplasm of testis	M	6	-	-	-	1	1	-	-	1	-	2	-	-	1	-

TABLE 17 (Cont'd,

T-List	Detailed List Number 9th Revision	Cause Group	Sex	All Ages	0-9	10-	20-	30-	35-	40-	45-	50-	55-	60-	65-	70-	75+	Unk
T126	188	Malignant neoplasm of bladder	M	97	-	-	-	-	2	-	-	2	9	15	18	16	35	-
T131 (part)	193	Malignant neoplasm of thyroid gland	F	54	-	-	-	-	-	-	1	1	2	3	8	11	28	-
T140	201	Hodgkin's disease	M	6	-	-	-	-	-	-	-	1	-	1	2	1	1	-
T141 (part)	200, 202	Non-Hodgkin's lymphoma	F	19	-	-	-	-	-	1	-	2	1	-	4	5	6	-
T141 (part)	203	Multiple myeloma and immunoproliferative neoplasms	M	8	-	-	1	1	-	-	-	1	1	1	-	1	2	-
T142	204-208	Leukaemia	F	4	1	1	1	1	-	-	-	-	-	-	-	1	-	-
			M	78	2	-	6	3	1	3	3	5	11	10	12	14	8	-
			F	51	2	1	2	3	-	2	2	-	5	5	7	6	16	-
			M	27	-	-	-	-	-	1	2	3	6	1	6	4	4	-
			F	17	-	-	-	-	-	-	1	1	-	3	1	2	9	-
			M	112	7	19	15	4	5	9	9	9	6	8	10	4	7	-
			F	83	8	7	8	6	3	2	5	2	8	4	10	8	12	-
			M	531	5	7	8	11	13	21	26	46	81	78	72	73	90	-
			F	367	14	6	15	5	8	8	19	12	41	47	49	42	101	-
			M	4590	14	34	69	69	108	144	272	489	648	715	714	665	649	-
			F	2945	26	22	49	37	57	68	139	200	313	356	436	442	799	1
			T	7535	40	56	118	106	165	212	411	689	961	1071	1150	1107	1448	1

TABLE 18 MAIN CAUSES OF DEATH FROM CANCER IN HONG KONG 1976 TO 1985

CAUSE OF DEATH Detailed List Number 9th Revision	Sex	1976#		1977#		1978#		1979		1980		1981		1982		1983		1984		1985	
		D	R	D	R	D	R	D	R	D	R	D	R	D	R	D	R	D	R	D	R
ALL FORMS OF CANCER (140-208)	M	3188	140.2	3396	147.2	3597	152.9	3774	149.6	4001	152.3	4025	149.4	4214	154.5	4539	164.3	4535	163.0	4590	163.6
	F	2180	100.5	2256	102.4	2381	106.1	2429	103.1	2429	100.7	2561	104.1	2596	103.6	2687	105.4	2812	108.9	2945	112.5
Malignant neoplasm of nasopharynx (147)	M	334	14.7	325	14.1	302	12.8	360	14.3	349	13.3	360	13.4	361	13.2	370	13.4	346	12.4	316	11.3
	F	102	4.7	110	5.0	120	5.3	126	5.3	118	4.9	109	4.4	121	4.8	102	4.0	103	4.0	94	3.6
Malignant neoplasm of oesophagus (150)	M	222	9.8	200	8.7	227	9.6	264	10.5	287	10.9	265	9.8	272	10.0	281	10.2	278	10.0	319	11.4
	F	75	3.5	67	3.0	64	2.9	66	2.8	61	2.5	54	2.2	61	2.4	78	3.1	60	2.3	65	2.5
Malignant neoplasm of stomach (151)	M	279	12.3	281	12.2	274	11.6	286	11.3	295	11.2	278	10.3	290	10.6	309	11.2	284	10.2	265	9.4
	F	156	7.2	161	7.3	177	7.9	167	7.1	167	6.9	188	7.6	172	6.9	212	8.3	164	6.4	184	7.0
Malignant neoplasm of colon (153)	M	130	5.7	136	5.9	150	6.4	136	5.4	147	5.6	171	6.3	187	6.9	217	7.9	229	8.2	217	7.7
	F	136	6.3	114	5.2	143	6.4	154	6.5	161	6.7	163	6.6	183	7.3	184	7.2	207	8.0	231	8.8
Malignant neoplasm of rectum, rectosigmoid junction and anus (154)	M	75	3.3	87	3.8	124	5.3	118	4.7	103	3.9	127	4.7	107	3.9	146	5.3	160	5.8	140	5.0
	F	73	3.4	76	3.5	81	3.6	107	4.5	93	3.9	84	3.4	108	4.3	108	4.2	114	4.4	104	4.0
Malignant neoplasm of liver and intrahepatic bile ducts (155)	M	508	22.3	380	16.5	650	27.6	691	27.4	689	26.2	731	27.1	689	25.3	783	28.3	780	28.0	740	26.4
	F	150	6.9	125	5.7	195	8.7	178	7.6	204	8.5	201	8.2	198	7.9	232	9.1	212	8.2	229	8.8
Malignant neoplasm of trachea, bronchus and lung (162)	M	803	35.3	919	39.8	999	42.5	1062	42.1	1223	46.6	1200	44.6	1263	46.3	1370	49.6	1393	50.1	1457	51.9
	F	532	24.5	529	24.0	562	25.0	600	25.5	583	24.2	626	25.4	699	27.9	632	24.8	735	28.5	766	29.3
Malignant neoplasm of breast (174 & 175)	M	3	0.1	2	0.1	-	-	1	*	1	*	-	-	2	0.1	1	*	-	-	4	0.1
	F	193	8.9	195	8.9	210	9.4	205	8.7	190	7.9	227	9.2	202	8.1	219	8.6	250	9.7	262	10.0
Malignant neoplasm of cervix uteri (180)	F	141	6.5	180	8.2	124	5.5	146	6.2	141	5.8	155	6.3	108	4.3	140	5.5	127	4.9	141	5.4

Data regrouped according to ICD 9th Revision (1975).

* Denote less than 0.05.

D - No. of Deaths.

R - Mortality Rate per 100 000 population.

TABLE 19 NEW CASES OF CANCER NOTIFIED TO THE CANCER REGISTRY BY AGE AND SEX 1983*

T-List	Detailed List Number 9th Revision	Cause Group	Sex	All Ages	0-9	10-	20-	30-	35-	40-	45-	50-	55-	60-	65-	70-	75+	Unk
T080 (part)	147	Malignant neoplasm of nasopharynx	M	887	-	6	38	68	79	128	156	140	109	76	46	25	14	2
T090	150	Malignant neoplasm of oesophagus	F	310	-	3	25	28	30	28	48	44	32	25	18	14	13	2
T091	151	Malignant neoplasm of stomach	M	456	-	1	-	1	6	15	26	63	85	77	79	58	41	4
T093	153	Malignant neoplasm of colon	F	111	-	-	2	2	1	1	5	11	12	13	13	13	38	-
T094	154	Malignant neoplasm of rectum, sigmoid junction and anus	M	554	-	1	6	5	15	16	27	45	76	111	90	89	66	7
T095	155	Malignant neoplasm of liver and intrahepatic bile ducts	F	306	-	1	9	8	6	3	9	35	21	33	40	50	87	4
T096	157	Malignant neoplasm of pancreas	M	441	-	-	11	11	11	9	27	44	55	70	69	64	65	5
T100	161	Malignant neoplasm of larynx	F	441	-	1	9	7	10	8	23	40	41	58	69	56	119	-
T101	162	Malignant neoplasm of trachea, bronchus and lung	M	351	-	-	9	10	8	13	21	38	52	53	59	44	42	2
			F	296	1	1	7	7	3	6	11	24	34	45	41	43	71	2
			M	849	4	8	17	26	34	67	99	116	117	128	99	75	52	7
			F	238	1	1	4	2	11	9	9	16	26	27	34	37	60	1
			M	74	-	-	-	3	2	2	1	7	9	9	13	18	10	-
			F	75	-	-	1	1	-	4	4	5	4	9	13	16	18	-
			M	211	-	1	-	2	2	5	9	21	35	41	32	38	25	-
			F	44	-	-	1	-	-	1	-	3	9	7	6	6	11	-
			M	1841	4	3	17	12	25	45	103	224	274	340	336	236	216	6
			F	746	1	-	3	7	5	17	29	55	92	109	124	127	177	-

TABLE 19 (Cont'd)

T-List	Detailed List Number 9th Revision	Cause Group	Sex	All Ages	0-9	10-	20-	30-	35-	40-	45-	50-	55-	60-	65-	70-	75+	Unk
T110	170	Malignant neoplasm of bone and articular cartilage	M	43	3	13	7	-	1	-	3	5	-	2	4	3	2	-
T112	172	Malignant melanoma of skin	F	31	-	8	3	2	-	2	1	1	2	1	4	2	4	1
T113	173	Other malignant neoplasm of skin	M	15	-	-	3	1	1	-	3	2	-	2	1	1	1	-
T114	174	Malignant neoplasm of female breast	F	22	1	2	1	3	1	-	2	1	1	2	3	2	3	-
T120	180	Malignant neoplasm of cervix uteri	M	107	-	1	2	1	3	6	7	10	8	16	21	16	13	3
T122	179, 182	Malignant neoplasm of uterus, other and unspecified	F	105	-	2	9	2	1	1	2	5	7	10	16	6	42	2
T123	183	Malignant neoplasm of ovary and other uterine adnexa	F	872	-	2	18	44	58	64	99	97	108	91	100	89	100	2
T124	185	Malignant neoplasm of prostate	F	631	-	3	19	33	37	41	75	106	92	102	46	39	33	5
T125	186	Malignant neoplasm of testis	F	165	-	-	8	1	8	8	25	32	26	18	15	10	14	-
			F	194	2	5	11	9	5	10	21	29	30	17	23	19	12	1
			M	165	-	-	1	-	1	-	2	3	6	21	34	38	59	-
			M	23	1	1	7	4	3	3	1	1	1	-	1	-	-	-

TABLE 19 (Cont'd)

T-List	Detailed List Number 9th Revision	Cause Group	Sex	All Ages	0-9	10-	20-	30-	35-	40-	45-	50-	55-	60-	65-	70-	75+	Unk
T126	188	Malignant neoplasm of bladder	M	414	-	2	1	4	5	14	7	30	50	81	79	77	63	1
T131 (part)	193	Malignant neoplasm of thyroid gland	F	146	-	-	-	-	-	2	1	7	9	15	22	32	57	1
T140	201	Hodgkin's disease	M	31	-	1	4	2	1	1	6	1	6	2	4	1	1	1
T141 (part)	200, 202	Non-Hodgkin's lymphoma	F	143	-	5	24	18	16	8	6	6	15	7	19	7	12	-
T141 (part)	203	Multiple myeloma and immunoproliferative neoplasms	M	26	3	-	5	3	2	2	2	3	-	1	2	1	1	1
T142	204-208	Leukaemia	F	17	-	2	2	3	-	-	-	2	1	3	1	2	1	-
	140-146, 148-149, 152, 156, 158-160, 163-165, 171, 175, 181, 184, 187, 189-192, 194-199		M	212	6	10	41	10	14	7	12	11	23	30	22	17	8	1
			F	148	7	8	14	6	4	4	5	12	16	11	17	21	23	-
			M	46	-	-	1	1	2	1	3	7	8	4	6	5	8	-
			F	35	-	-	1	1	-	-	1	7	2	2	9	2	10	-
			M	218	62	24	25	6	4	12	8	7	8	23	16	9	7	7
			F	185	36	21	16	9	16	7	10	7	18	14	7	10	11	3
T080-T142	140-208	All forms of cancer	M	8200	113	87	239	209	250	398	600	916	1078	1284	1182	973	811	60
			F	6087	76	81	226	216	221	259	426	614	694	732	730	712	1068	32
			T	14287	189	168	465	425	471	657	1026	1530	1772	2016	1912	1685	1879	92

* Provisional

TABLE 20 NEW OVERSEAS CASES OF CANCER DIAGNOSED IN HONG KONG 1983

T-List	Detailed List Number 9th Revision	Cause Group	Sex	All Ages	0-9	10-	20-	30-	35-	40-	45-	50-	55-	60-	65-	70-	75+
T080 (part)	145	Malignant neoplasm of other and unspecified parts of mouth	M	2	-	-	-	-	-	-	1	-	-	-	-	-	1
T080 (part)	146	Malignant neoplasm of oropharynx	M	1	-	-	-	-	-	-	-	-	-	-	1	-	-
T080 (part)	147	Malignant neoplasm of nasopharynx	F	1	-	-	-	-	-	-	-	-	-	1	-	-	-
T094	154	Malignant neoplasm of rectum, rectosigmoid junction and anus	M	20	-	-	-	2	1	6	2	2	2	4	1	-	-
T101	162	Malignant neoplasm of trachea, bronchus and lung	F	12	-	-	2	2	-	2	1	1	2	1	-	-	1
T102 (part)	160	Malignant neoplasm of nasal cavities, middle ear and accessory sinuses	F	3	-	-	-	-	-	1	-	-	-	1	1	-	-
T114	174	Malignant neoplasm of female breast	M	1	-	-	-	-	-	-	-	-	-	1	-	-	-
T120	180	Malignant neoplasm of cervix uteri	F	3	-	-	-	1	-	-	-	1	-	-	-	1	-
T131 (part)	193	Malignant neoplasm of thyroid gland	F	1	-	-	-	-	-	-	-	-	-	-	-	1	-
T141	200	Lymphosarcoma and reticulosarcoma	M	1	-	-	-	-	-	-	-	-	-	-	1	-	-
T142	204	Lymphoid leukaemia	F	1	-	-	-	-	-	-	-	-	-	-	-	-	-
	141, 148, 153, 155, 170, 189, 198	Malignant neoplasm of other and unspecified sites	F	2	-	-	-	-	-	-	-	-	-	-	-	-	-
T080-T142	140-208	All forms of cancer	M	32	-	-	1	2	1	7	4	3	3	6	3	1	1
			F	28	-	-	3	3	2	4	1	2	4	3	3	2	1
			T	60	-	-	4	5	3	11	5	5	7	9	6	3	2

TABLE 21 DEATHS FROM HEART DISEASES BY AGE AND SEX 1985
(Including Hypertensive Disease)

I-List No.	Cause (with detailed list no.)	Sex	All Ages	Age Group													Unk	
				0-	10-	20-	30-	35-	40-	45-	50-	55-	60-	65-	70-	75+		
T250	ACUTE RHEUMATIC FEVER (390-392)	M F	- -	- -	- -	- -	- -	- -	- -	- -	- -	- -	- -	- -	- -	- -	- -	- -
T251	CHRONIC RHEUMATIC HEART DISEASES (393-398)	M F	50 96	2 1	1 2	4 5	2 2	7 13	4 4	3 3	7 13	5 12	6 18	8 27	4 27	- -	- -	- -
	Diseases of mitral valve (394)	M F	13 27	- -	1 1	- -	- -	4 3	2 1	- -	4 2	3 1	2 7	1 8	- -	- -	- -	- -
T260	HYPERTENSIVE HEART DISEASES (402, 404)	M F	387 349	- -	- -	- -	- -	25 9	8 25	2 22	8 9	55 22	66 48	88 171	112 171	1 -	- -	- -
T261	OTHER HYPERTENSIVE DISEASES (401, 403, 405)	M F	144 160	- -	- -	- -	- -	5 8	18 11	28 13	28 29	32 65	26 29	26 65	- -	- -	- -	- -
T270	ACUTE MYOCARDIAL INFARCTION (410)	M F	774 547	- -	1 1	1 2	5 2	25 11	6 11	25 11	134 44	151 96	188 286	1 -	- -	- -	- -	- -
T271	OTHER ISCHAEMIC HEART DISEASES (411-414)	M F	529 537	- -	1 1	4 -	- -	22 3	37 14	59 31	94 52	103 96	206 336	- -	- -	- -	- -	- -
T280	DISEASES OF PULMONARY CIRCULATION (415-417)	M F	196 187	- -	- -	2 1	- -	16 -	31 8	20 25	38 54	47 75	- -	- -	- -	- -	- -	- -
T281	OTHER FORMS OF HEART DISEASES (420-429)	M F	131 124	6 5	3 5	11 3	5 1	7 1	17 7	14 13	16 12	22 55	- -	- -	- -	- -	- -	- -
T250- T281	ALL FORMS OF HEART DISEASES (390-429)	M F	2211 2000	7 5	6 7	14 7	15 9	16 9	21 31	51 31	136 40	203 106	384 248	432 362	605 1015	2 -	- -	- -

TABLE 22 INFECTIOUS DISEASES NOTIFIED 1981 TO 1985

Disease	Cases								Deaths				
	1981	1982	1983	1984	1985	1981	1982	1983	1984	1985			
Amoebiasis	48	37	37	29	16	-	2	2	1	2			
Bacillary Dysentery	563	550	479	396	519	3	1	1	-	-			
Cerebrospinal Meningitis & Meningococcal Infections	18	16	13	8	12	1	1	1	-	-			
Chickenpox	1 140	1 621	1 228	2 433	1 194	-	3	1	3	-			
Cholera	3*	8#	-	1	2	-	-	-	-	-			
Diphtheria	-	1	-	-	-	-	1	-	-	-			
Enteric Fever : Typhoid	482	369	346	317	267	2	-	3	1	1			
Paratyphoid	18	23	23	14	20	2	-	-	-	-			
Food Poisoning : Outbreaks (Persons affected)	175 (666)	215 (870)	169 (642)	233 (1 340)	278 (958)	-	-	-	-	-			
Leprosy	55	57	38	32	32	2	1	-	-	-			
Malaria	62	80	125	113	168	-	-	-	-	-			
Measles	249	1 863	888	678	280	-	5	2	2	1			
Ophthalmia Neonatorum	5	4	1	6	5	-	-	-	-	-			
Poliomyelitis	3	-	1	-	1	1	-	-	-	-			
Puerperal Fever	2	-	-	-	-	-	-	-	-	-			
Rabies (Human)	1	-	-	2*	-	1	-	-	2	-			
Scarlet Fever	3	4	3	5	1	-	-	-	-	-			
Tuberculosis	7 729	7 527	7 301	7 843	7 545	489	454	446	420	409			
Typhus (Urban)	-	-	-	1*	1	-	-	-	-	-			
Typhus (Scrub)	6	5	3	6	12	-	-	-	-	-			
Viral Hepatitis	1 738	1 814	1 783	1 780	1 601	26	42	28	12	13			
Whooping Cough	2	1	-	18	21	-	-	-	-	-			
Total	12 302	14 195	12 438	13 915	11 975	527	510	485	443	426			

Remarks : No case of smallpox, plague, epidemic louse-borne typhus, yellow fever or relapsing fever was reported during the specified years.

* Imported cases

Including 5 imported cases

TABLE 23 NOTIFICATION AND DEATH RATES OF CERTAIN INFECTIOUS DISEASES 1981 TO 1985

Disease	Notification Rate (per 100 000 population)					Death Rate (per million population)				
	1981	1982	1983	1984	1985	1981	1982	1983	1984	1985
Amoebiasis	0.93	0.71	0.70	0.54	0.30	-	0.38	0.38	0.19	0.37
Bacillary Dysentery	10.92	10.51	9.02	7.38	9.57	0.58	0.19	0.19	-	-
Cerebrospinal Meningitis & Meningococcal Infections	0.35	0.31	0.24	0.15	0.22	0.19	0.19	0.19	-	-
Diphtheria	-	0.02	-	-	-	-	0.19	-	-	-
Enteric Fever (Typhoid & Paratyphoid)	9.70	7.49	6.94	6.17	5.29	0.78	-	0.56	0.19	0.18
Measles	4.83	35.60	16.71	12.64	5.16	-	0.96	0.38	0.37	0.18
Tuberculosis	149.96	143.84	137.41	146.22	139.13	94.88	86.76	83.94	78.30	75.42
Viral Hepatitis	33.72	34.67	33.56	33.18	29.52	5.04	8.03	5.27	2.24	2.40

TABLE 24 PRINCIPAL INFECTIOUS DISEASES NOTIFIED BY AGE AND SEX 1985

Age Group	Tuberculosis		Viral Hepatitis		Enteric Fever		Bacillary Dysentery	
	M	F	M	F	M	F	M	F
0 - 4	22	19	15	7	5	11	69	57
5 - 9	23	12	26	15	17	15	53	40
10 - 14	34	56	64	47	25	7	29	31
15 - 19	227	209	169	83	19	14	13	27
20 - 24	572	417	239	127	22	26	16	24
25 - 29	656	349	231	95	25	21	10	24
30 - 34	457	262	123	52	11	12	7	10
35 - 39	304	167	81	24	9	4	6	5
40 - 44	329	120	31	22	7	2	4	9
45 - 49	355	88	31	13	2	6	8	5
50 - 54	438	100	30	9	2	3	5	8
55 - 59	485	108	17	9	3	3	5	4
60 - 64	443	131	9	9	1	1	6	4
65 - 69	347	95	6	7	2	3	7	5
70 - 74	275	96	2	-	4	2	7	4
75 & over	225	120	1	-	1	2	6	10
Unknown	4	-	2	-	-	-	-	-
Total	5 196	2 349	1 077	519	155	132	251	267
	7 545		1 601 (5)		287		519 (1)	

Note : Figures in brackets denote sex unknown included.

TABLE 25 MALARIA 1981 TO 1985

Cases Notified

Year	Imported	Induced	Indigenous	Relapsing	Undetermined	Total Cases
1981	61	-	1	-	-	62
1982	77	2	1	-	-	80
1983	94	1	30	-	-	125
1984	101	-	10	2	-	113
1985	162	1	3	-	2	168

Note :

- (1) All imported relapsing cases are grouped under 'imported cases'.
 (2) Congenital and blood transfusion cases are grouped under 'induced cases'.

Identification of Parasites

Year	P. Vivax	P. Falci- parum	P. Malariae	P. Ovale	Mixed Infection	Species Undetermined	Total
1981	47	7	5	-	-	3	62
1982	69	7	3	-	-	1	80
1983	103	9	6	-	-	7	125
1984	92	12	3	1	2	3	113
1985	134	19	4	-	11	-	168

TABLE 26 PROPHYLACTIC IMMUNIZATIONS 1981 TO 1985

Immunizations	1981	1982	1983	1984	1985
Smallpox	1 676	1 041	578	229	-
Cholera	7 870	8 053	5 887	5 595	5 691
Diphtheria/Pertussis/Tetanus	251 384	267 477	267 365	263 317	257 083
Diphtheria/Tetanus	102 954	186 054	147 262	177 964	141 742
Typhoid					
1st Dose	25 999	8 258	829	1 180	1 147
2nd Dose	3 687	1 168	63	102	138
Booster Dose	40 508	12 663	1 097	720	858
Tuberculosis (BCG)					
Infant	87 694	86 562	84 186	78 389	77 199
Others	51 208	57 213	72 050	52 622	60 393
Poliomyelitis					
Type I for Newborn	84 094	83 823	81 528	76 096	74 312
1st Dose - Trivalent	80 750	78 844	75 670	70 608	67 302
2nd Dose - Trivalent	76 501	79 586	77 768	74 679	72 175
Booster Dose - Trivalent	131 835	229 322	193 452	224 226	212 710
Measles	65 022	70 919	76 211	74 788	71 820
Rubella	35 763	28 474	41 662	44 079	45 611

TABLE 27 TUBERCULOSIS MORTALITY 1961, 1975 AND 1981 TO 1985

Year	Total Deaths from Tuberculosis	Tuberculosis Death Rate per 100 000 Population	Tuberculosis Deaths as percentage of total registered deaths	Average Age at death from Tuberculosis
1961	1 907	60.2	10.2	43.0
1975	646	14.7	3.0	58.5
1981	489	9.5	2.0	63.0
1982	454	8.7	1.8	63.0
1983	446	8.4	1.7	63.0
1984	420	7.8	1.6	64.5
1985	409	7.5	1.6	65.0

TABLE 28 TUBERCULOSIS IN CHILDHOOD 1961, 1975 AND 1981 TO 1985

Year	Percentage* of newborns receiving BCG	Percentage of Tuberculosis Deaths under 5 years	Percentage of Tuberculosis Deaths under 1 year	Infantile Mortality from Tuberculosis (per 1 000 births)
1961	77.77	11.48	2.62	0.46
1975	97.62	1.39	0.31	0.03
1981	99.53	0.41	-	-
1982	98.94	0.22	-	-
1983	99.41	0.45	-	-
1984	99.91	0.24	0.24	0.01
1985	99.44	-	-	-

* Percentage of newborns based on registered birth figures in 1961 and based on known birth figures since 1970.

TABLE 29 TUBERCULOSIS NOTIFICATIONS 1961, 1975 AND 1981 TO 1985

Year	Government Chest Clinics	Other Government Institutions	Tung Wah Group Hospitals	Other Non-Government Institutions & Private Sources	Total	Notification Rate per 100 000 population
1961	8 957	2 056	947	624	12 584	397.21
1975	4 886	583	254	2 469	8 192	186.36
1981	4 936	472	328	1 993	7 729	149.96
1982	4 663	594	314	1 956	7 527	143.84
1983	4 509	634	385	1 773	7 301	137.41
1984	5 196	506	319	1 822	7 843	146.22
1985	5 118	432	394	1 601	7 545	139.13

TABLE 30 WORK OF TUBERCULOSIS AND CHEST SERVICE 1985

Total attendances	763 420
Total patients attending (old & new)	99 178
Number of new patients	54 505
<u>Classification of new patients</u>	
I) NSD [#] & Unknown	30 876 (56.64)
II) Diseases other than tuberculosis	10 720 (19.67)
III) Non-respiratory tuberculosis	476 (0.87)
a) Meninges	8 (0.01)
b) Bones and joints	112 (0.21)
c) Others	356 (0.65)
IV) Respiratory tuberculosis	
a) Not active and unknown activity	6 282 (11.53)
b) Active	5 629 (10.33)
i) By bacteriology and extent	
Negative A1	2 274 (4.17)
A2	499 (0.92)
A3	73 (0.13)
Positive B1	1 250 (2.29)
B2	938 (1.72)
B3	415 (0.76)
Incomplete O1	129 (0.24)
O2	42 (0.08)
O3	9 (0.02)
ii) By previous history and treatment	
No previous history of tuberculosis	4 932 (9.05)
Previously diagnosed, no treatment	14 (0.03)
Previously diagnosed, with treatment	571 (1.04)
Previous history not known	112 (0.21)
Total with examination completed	53 983 (99.04)

Note : Figures in brackets denote percent of total new patients

Nil of significance detected

TABLE 31 EXAMINATION OF NEW CONTACTS OF TUBERCULOSIS PATIENTS 1985

Number of patients listed	8 292	
Number of contacts listed	21 089	
(a) Number of children with negative tuberculin/tine*	909	
Number of children given BCG	902	
(b) Number of contacts X-rayed	15 990	(100.00%)
Results		
NSD# & Unknown	15 139	(94.68%)
Diseases other than TB	216	(1.35%)
Respiratory TB		
Active A (negative by bacteriology)	127	(0.79%)
B (positive by bacteriology)	35	(0.22%)
O (incomplete investigation)	13	(0.08%)
Not active	418	(2.62%)
Non-respiratory TB	5	(0.03%)
Result not yet known	37	(0.23%)

Nil of significance detected

* for NT Chest Clinics only

TABLE 32 ANNUAL ATTENDANCES AND TREND OF VENEREAL DISEASES 1976 TO 1985

NEW ATTENDANCES	1976	1977	1978	1979	1980	1981	1982	1983	1984	1985
VENEREAL DISEASES										
Syphilis	1 134	1 101	1 244	1 130	1 092	970	830	699	649	634
Non-congenital										
Primary	179	79	83	37	102	109	94	70	36	54
Secondary	17	12	17	14	36	37	20	29	13	19
Early Latent	276	250	258	282	239	188	130	149	150	89
Late Latent	582	678	783	706	663	588	553	428	421	450
All Others	38	27	9	15	18	13	12	10	22	11
Congenital										
Under 1 year	13	20	27	22	6	-	-	2	1	1
Over 1 year	29	35	67	54	28	35	21	11	6	10
Gonorrhoea	3 279	2 115	2 052	2 761	2 629	3 362	4 546	4 275	4 967	4 796
Non-specific Genital Infection*	-	-	-	-	-	549	797	599	564	968
Non-gonococcal Urethritis	1 095	909	847	974	960	943	1 294	1 086	1 203	1 696
Chancroid	113	197	234	163	357	439	310	261	422	628
Lymphogranuloma Venereum	33	36	48	36	76	75	31	31	25	20
Herpes Genitalis+	-	-	-	-	267	268	414	497	351	346
Genital Warts+	-	-	-	-	456	673	971	1 368	1 563	1 897
Pediculosis Pubis+	-	-	-	-	66	42	86	103	137	180
Scabies#	-	-	-	-	-	-	229	390	245	228
Others (unclassified)	961	660	176	324	399	280	298	207	227	264
ALL VENEREAL DISEASES	6 615	5 018	4 601	5 388	6 302	7 601	9 806	9 516	10 353	11 657
NON-VENEREAL DISEASES	6 693	5 906	5 316	4 900	6 250	6 643	6 820	7 701	8 273	14 935
SKIN DISEASES	16 438	15 982	16 907	16 392	15 470	14 964	16 960	17 664	14 922	8 696
NEW ATTENDANCES (ALL TYPES)	29 746	26 906	26 824	26 680	28 022	29 208	33 586	34 881	33 548	35 288
TOTAL ATTENDANCES (ALL TYPES)	154 871	139 711	138 858	142 691	144 641	150 852	166 933	173 957	176 024	184 534

* Formerly classified as non-veneral diseases

+ Formerly classified as skin diseases

Formerly classified as skin diseases; partly classified as venereal diseases w.e.f. 1982

TABLE 33 VDRL EXAMINATIONS IN EXPECTANT MOTHERS 1981 TO 1985

Examinations	1981*	1982*	1983	1984	1985
Venous Blood	85 837	74 430	83 122	82 228	83 948
Positive	294	276	283	438	434
% Positive	0.34	0.37	0.34	0.53	0.52

* Excluding examinations done in AHML Nethersole Hospital, Caritas Medical Centre, Our Lady of Maryknoll Hospital, United Christian Hospital, Pok Oi Hospital and Yan Chai Hospital.

TABLE 34 LEPROSY CASES 1976 TO 1985

I) Incidence of Leprosy

Year	New Cases		Imported Cases	New Cases Admitted to Lai Chi Kok Hospital
	No. #	Incidence Rate* per 100 000 population		
1976	76	1.7	2	34
1977	73	1.6	1	24
1978	74	1.6	5	23
1979	70	1.4	7	20
1980	60	1.2	4	18
1981	55	1.1	5	10
1982	57	1.1	5	14
1983	38	0.7	4	6
1984	32	0.6	-	4
1985	32	0.6	-	9

* Rates for the years 1977 to 1980 based on revised population estimates after 1981 Census.

Including imported cases.

II) Number of New Cases by Age 1985

Age Group	No. of cases
Under 1	-
1 - 4	-
5 - 9	-
10 - 14	-
15 - 19	-
20 - 24	1
25 - 29	4
30 - 34	1
35 - 39	2
40 - 44	2
45 - 49	3
50 - 54	1
55 - 59	3
60 & over	15
Total	32

TABLE 35 ANALYSIS OF NEW DERMATOLOGICAL CASES PRESENTING AT CLINICS 1985

Dermatological Condition	No. of New Cases	Dermatological Condition	No. of New Cases
Acne	1 081	Nevi (all types)	194
Alopecia	322	Pediculosis	-
Angioedema	-	Pemphigus	15
Carcinoma	29	Paronychia	33
Contact dermatitis	707	Pityriasis rosea	528
Dermatitis exfoliative	38	Pityriasis alba	482
Dermatitis herpetiformis	-	Pruritus	482
Dermatomyositis	19	Psoriasis	985
Drug eruption	81	Purpura	1
Eczema (all types)	5 768	Pyoderma	533
Epidermolysis bullosa	7	Raynaud's phenomenoma	-
Erythema multiforme	29	Rosacea	348
Erythema nodosum	10	Scabies	784
Granuloma	21	Scleroderma	11
Herpes simplex	146	Tinea (all types)	2 230
Herpes zoster	239	TB Cutis	-
Ichthyosis	20	Tumors, benign	-
Keloid	69	Ulcer, varicose	9
Keratosis (all types)	81	Urticaria	960
Lichen amyloidosis	96	Vasculitis	-
Lichen planus	57	Verruca	711
Lichen simplex	923	Vitiligo	282
Light sensitivity	-	Xanthoma	6
Lupus (all types)	8	Leprosy	-
Miliaria	3	Miscellaneous	140
Molluscum contagiosum	37		
Neurofibromatosis	5	TOTAL	18 530

TABLE 36 DISTRIBUTION OF FAMILY HEALTH CENTRES AS AT 31ST MARCH 1986

Centre	Hong Kong	Kowloon	NT and Islands	Total
<u>Maternal & Child Health</u>				
Full-time				
with Midwifery Service	1	7	2	10
without Midwifery Service	7	7	6	20
Part-time				
with Midwifery Service	-	-	9	9
without Midwifery Service	1	2	2	5
<u>Comprehensive Observation Service</u>				
Full-time	3	15	6	24
Part-time	6	1	13	20
<u>Family Planning</u>				
Full-time	-	2	2	4
Part-time	10	14	19	43

TABLE 37 WORK OF FAMILY HEALTH SERVICE 1984 AND 1985

(Maternal and Child Health)

	<u>1984</u>	<u>1985</u>
<u>Number of Centres (as at 31.12.85)</u>		
Full-time	30	30
Part-time	14	14
<u>Ante-natal Sessions</u>		
Total sessions	4 204	4 195
New attendances	35 503	34 347
Total attendances	243 778	238 695
Average attendance per session	57.99	56.90
Average attendance per person	6.87	6.95
<u>Post-natal Sessions</u>		
Total sessions	1 590	1 647
New attendances	26 478	25 619
Total attendances	26 851	25 992
Percentage presenting with some abnormalities	5.42%	4.21%
<u>Infant Welfare Sessions (0-2 years of age)</u>		
Total sessions	9 395	9 555
New attendances	72 870	71 672
Total attendances	1 127 879	1 089 902
<u>Toddler Welfare Sessions (2-5 years of age)</u>		
Total sessions	1 745	1 664
New attendances	49 949	52 174
Total attendances	152 692	141 846
<u>Percentage of new attendances* presenting with some abnormalities (0-5 years of age)</u>	2.78%	2.74%
<u>Home Visits</u>	105 949	105 156

* Figure for 1985 refers to new and old attendances whereas that for 1984 refers to new attendances only.

TABLE 38 WORK OF FAMILY HEALTH SERVICE 1984 AND 1985

(Comprehensive Observation Service)

	<u>1984</u>	<u>1985</u>
<u>Number of centres (as at 31.12.85)</u>		
Full-time	23	24
Part-time	21	20
<u>Number of sessions held</u>	15 599	16 561
<u>Number of children examined</u>	140 357	148 497
<u>Number of new cases</u>	66 818	67 268
<u>Total number of developmental screening tests done</u>	184 226	195 691
<u>Number of children found to have defects/disabilities* (including provisional cases)</u>	2 031	2 137
<u>Number of referrals</u>	2 489	2 644

* Based on notification forms received.

TABLE 39 WORK OF FAMILY HEALTH SERVICE 1984 AND 1985

(Family Planning)

		1984	1985
Number of centres (as at 31.12.85)	Full-time	4	4
	Part-time	43	43
	Total	47	47
Number of sessions provided		7 972	7 982
Number of clients	New	49 322	48 189
	Old	84 107	89 147
	Total	133 429	137 336
Number of attendances		446 301	468 643
Characteristics of new clients			
I. Contraceptive method	Pills	20 068	18 237
	Injections	1 959	1 409
	IUD's	726	667
	Condoms	23 486	25 070
	Other methods	3 083	2 806
	Total	49 322	48 189
II. Age	Under 20	1 228	1 118
	20 - 24	11 964	10 609
	25 - 29	21 796	21 300
	30 - 34	10 450	10 820
	35 - 39	3 009	3 431
	40 - 44	621	688
	45 & over	254	223
Total	49 322	48 189	

Note : New clients refer to

- (1) Clients never attend family planning clinics.
- (2) F.P.A. clients first attend our clinics after the date of take-over.
- (3) Return of clients after pregnancy, advised pregnancy, advised sterilization and referred to hospital.
- (4) Return of non-I.U.D. clients whose date of last visit was over 2 years ago and I.U.D. clients whose date of last visit was over 4 years ago.

TABLE 40 WORK OF OCCUPATIONAL HEALTH DIVISION 1984 AND 1985

	1984	1985
<u>I. Number of Confirmed Occupational Diseases</u>		
Compressed Air Illness Compression Barotrauma	4	4
Decompression sickness Type I	609	163
Type II	6	1
Dysbaric osteonecrosis	10	1
Contact dermatitis	47	32
Silicosis	232	179
Mercury poisoning	1	-
Benzene poisoning	1	-
Gas poisoning	22	17
Traumatic inflammation of tendons of hand or forearm or of the associated tendon sheath	-	1
<u>II. Occupational Injuries</u>		
No. of occupational injuries reported	83 491	87 851
No. of accidents requiring notification under Employees' Compensation Ordinance	81 171	79 556
<u>III. Employees' Compensation Case Work</u>		
Total no. of interviews with injured employees	188 240	197 391
Cases assessed by Ordinary Assessment Boards#	16 044	17 573
Cases assessed by Medical Assessment Boards+	1 181	171
Cases assessed by Special Assessment Boards@	70	10
Cases assessed by Protheses and Surgical Appliances Boards@	312	471
# Nursing staff assisted in the preparation and clearance of cases of Ordinary Assessment Boards.		
+ Employees' compensation cases occurring before 1.7.83 assessed by Occupational Health Officers.		
@ Employees' compensation cases occurring on and after 1.7.83 are assessed by statutory boards with the enactment of the Employees' Compensation (Amendment) Ordinance. Occupational Health Officers sat on Special Assessment Boards and Protheses and Surgical Appliances Boards.		

TABLE 41 ENVIRONMENTAL AND BIOLOGICAL MONITORING AND SURVEY WORK OF OCCUPATIONAL HEALTH DIVISION 1985

I. Field Survey Work

<u>Nature of Survey Work</u>	<u>No. of surveys</u>	<u>No. of samples taken</u>
(A) Atmospheric monitoring :		
Acetic acid	2	2
Acetone	7	10
Acid mist (Sulphuric acid mist)	1	3
Ammonia	24	41
Asbestos	10	22
Benzene	3	5
Carbon dioxide	1	1
Carbon monoxide	4	7
Charcoal tubes samples (Organic solvent vapour)	1	5
Chlorine	4	6
Chloroform	3	3
Chromic acid mist	25	42
Cotton dust	32	108
Cyclohexanone	1	2
Diethyl ether	1	2
Dust	167	618
Ether	1	1
Ethyl acetate	16	19
Explosive gas	2	2
Fluoride dust	13	31
Formaldehyde	4	6
Glycol ethers	27	27
Hydrocarbon	3	5
Hydrogen chloride	5	4
Hydrogen cyanide	13	15
Hydrogen fluoride	1	2
Hydrogen sulphide	1	2
Isocyanate	1	1
Lead	41	48
Lead dust	1	1
Manganese dioxide	1	4
Methyl ethyl ketone	13	15
Methylene chloride	6	6
Nitrogen dioxide	7	9
Organic solvents	5	13
Organic vapours	12	26
Ozone	83	169
Perchloroethylene	8	13
Phenol	1	1
Phosgene	1	1
Iso-propyl alcohol	5	5
Silica dust	11	35
Soda ash	1	1
Sulphur dioxide	2	2
Styrene	31	51
Tetrahydrofuran	1	1
1, 1, 1-trichloroethane	90	153
Trichloroethylene	58	94
Toluene	68	93
Toluene di-isocyanate	8	15
Vinyl chloride	1	1
Welding fume	1	1
Xylene	13	19

TABLE 41 (Cont'd)

	<u>No. of surveys</u>	<u>No. of samples taken</u>
(B) Ventilation surveys :		
General ventilation	286	-
Local exhaust	335	-
(C) Thermal surveys	6	-
(D) Lighting surveys	8	-
(E) Radiation surveys :		
Radio frequency	2	-
Laser	1	-
Total	<u>1 480</u>	<u>1 769</u>
	=====	=====

II. Laboratory Analysis Work

<u>Nature of analysis work</u>	<u>No. of analyses</u>	<u>No. of samples/ specimens collected</u>
(A) Chemical Analysis :		
Asbestos	(2)	(2)
2-Butoxyacetic acid	(36)	(-)
Butyl cellusolve	(8)	(8)
Cellusolve acetate	(8)	(8)
2-Ethoxyacetic acid	(36)	(36)
Glycol ethers	27	-
Hippuric acid	(36)	(-)
Isocyanate	(1)	(1)
Lead	(10)	(9)
Major composition of solvent vapour	(69)	(69)
Methylhippuric acid	(36)	(-)
Ozone	39	39
Phenol	(36)	(-)
Resin	(1)	(-)
Silica	(25)	(23)
Trichlorotri-fluoroethane	(2)	(2)
(B) Urinalysis :		
Glucose	468	468
Protein	468	-
Total	<u>1 002 (306)</u>	<u>507 (158)</u>
	=====	=====

Note : Figures in brackets were analyses/samples/specimens being referred to the Government Laboratory for chemical analysis.

TABLE 42 WORK OF PORT HEALTH SERVICE 1984 AND 1985

	<u>1984</u>	<u>1985</u>
Number of ships inspected	2 669	2 781
Number of deratting exemption certificates issued	426	462
Number of radio pratique granted	8 881	7 687
Number of medical assistance and advice given	83	65
Vaccinations done		
smallpox	226	-
cholera	4 249	4 117
yellow fever	1 408	1 316
plague	64	-
typhus	3	-
typhoid	1 253	1 586

Table 43 WORK OF HEALTH EDUCATION UNIT, 1985

I. Number of Centres/Regional Offices		3
II. Health Education Activities		
(A) Communication with public	<u>No. of Occasion</u>	<u>No. of Attendance[@]</u>
Exhibitions	9	58 360
Workshops	208	13 990
Shows (films, videos and slides)	1 815	51 320
Health talks	216	14 680
Lectures, seminars and speeches	88	7 090
Training projects	17	1 320
Radio/TV programmes; press/TV/ radio interviews	359	-
Surveys and evaluation in health education	21	1 860*
Miscellaneous (incl special events, judging of competition and others)	2 256	-
(B) Counselling		
Number of telephone counselling	5 464	
Number of counselling interviews	3 657	
Number of special counselling	95	
Number of telephone hotline calls	29 823	
(C) Number of health packets, printed materials and pamphlets distributed	181 620 [@]	
(D) Meetings/visitors and guests		
Number of meetings	242	
Number of visitors and guests	713	
(E) Training		
Number of staff trained	103	
Number of staff from other departments trained	285	

* Number of respondents

[@] Figures are rounded to the nearest ten