



DAILY INFORMATION BULLETIN

ISSUED BY GOVERNMENT INFORMATION SERVICES
BEACONSFIELD HOUSE, HONG KONG. TEL.: 842 8777

MONDAY, MAY 23, 1994

<u>CONTENTS</u>	<u>PAGE NO.</u>
TWO MORE ACP CONTRACTS AWARDED	1
AIRPORT CONSULTATIVE COMMITTEE MEETS AGAIN	2
FIGURES SHOW A DECLINE IN EMIGRATION	2
IMPLEMENTATION OF UN SANCTIONS AGAINST HAITI.....	3
CONSUMER PRICE INDICES FOR APRIL	4
NON-GRADUATE TEACHER ASSESSMENT RESULTS ANNOUNCED	10
PLANNING APPLICATION FORM AND GUIDANCE NOTES REVISED	11
WATER STORAGE FIGURE	11
CLOSURE OF KWUN TONG UNAUTHORISED STRUCTURE SOUGHT	11
HONG KONG MONETARY AUTHORITY MONEY MARKET OPERATIONS	12

MONDAY, MAY 23, 1994

- 1 -

TWO MORE ACP CONTRACTS AWARDED

* * * * *

THE CENTRAL TENDER BOARD HAS APPROVED THE AWARD OF TWO AIRPORT CORE PROGRAMME (ACP) CONTRACTS WITH A TOTAL VALUE OF OVER \$64.3 MILLION.

A \$39.9-MILLION CONTRACT HAS BEEN AWARDED TO CHUN WO CONSTRUCTION AND ENGINEERING COMPANY LIMITED FOR THE CONSTRUCTION OF THE PUI O "B" PUMPING STATION, WATERMAINS AND ANCILLARY WORKS.

THE CONTRACT IS PART OF THE NORTH LANTAU WATER SUPPLY PROJECT TO PROVIDE A PERMANENT FRESH WATER SUPPLY TO THE NEW AIRPORT AT CHEK LAP KOK, TUNG CHUNG NEW TOWN AND OTHER PROPOSED DEVELOPMENTS IN NORTH LANTAU.

WORK WILL START LATER THIS MONTH AND WILL BE COMPLETED IN EARLY 1996.

THE OTHER CONTRACT, WHICH HAS BEEN AWARDED TO HONG KONG KWONG TAI BUILDERS LIMITED AT A PRICE OF \$24.4 MILLION, COVERS THE CONSTRUCTION OF A MICROWAVE LINK RELAY STATION IN NORTH LANTAU FOR THE NEW AIRPORT AT CHEK LAP KOK.

THE COMPANY WILL BE RESPONSIBLE FOR THE CONSTRUCTION OF A SINGLE-STOREY BUILDING WHICH COMPRISES AN EQUIPMENT ROOM, PERMANENT AND EMERGENCY POWER SUPPLY FACILITIES, FIRE PROTECTION PROVISION, A STEEL TOWER TO ACCOMMODATE THE ANTENNAS, A HELIPAD FOR ACCESS AND LANDSCAPING WORKS.

WORK WILL COMMENCE NEXT MONTH FOR COMPLETION IN MID-1995.

THE AWARD OF THESE TWO CONTRACTS BRINGS THE TOTAL NUMBER OF ACP CONTRACTS AWARDED BY THE GOVERNMENT TO 42, WITH A TOTAL VALUE OF MORE THAN \$32 BILLION.

TOGETHER WITH THE SIX CONSTRUCTION CONTRACTS, VALUED AT \$10.7 BILLION, AWARDED BY THE PROVISIONAL AIRPORT AUTHORITY, AND THE \$5.7 BILLION CONSTRUCTION CONTRACT AWARDED BY THE WESTERN HARBOUR TUNNEL COMPANY LIMITED, THE TOTAL VALUE OF CONSTRUCTION CONTRACTS AWARDED FOR THE ACP IS OVER \$48.4 BILLION.

----- 0 -----

2/

MONDAY, MAY 23, 1994

- 2 -

AIRPORT CONSULTATIVE COMMITTEE MEETS AGAIN

* * * * *

MEMBERS OF THE CONSULTATIVE COMMITTEE ON THE NEW AIRPORT AND RELATED PROJECTS WILL MEET AT 11 AM ON WEDNESDAY (MAY 25) TO DISCUSS THE ADMINISTRATION'S FUNDING PROPOSAL FOR THE AIRPORT RAILWAY IMMERSSED TUBE AND RELATED WORKS.

THE MEETING WILL TAKE PLACE IN THE CONFERENCE HALL, FIRST FLOOR, CENTRAL GOVERNMENT OFFICES, MAIN WING (NEW ANNEXE), LOWER ALBERT ROAD, CENTRAL.

MEMBERS OF THE PUBLIC WHO WISH TO OBSERVE THE PROCEEDINGS ARE REQUESTED TO RESERVE A SEAT BY TELEPHONING MR CHAN HO-KEUNG AT 829 6745 DURING OFFICE HOURS.

AS SEATING IN THE CONFERENCE HALL IS LIMITED, BOOKINGS WILL BE ACCEPTED ON A FIRST-COME-FIRST-SERVED BASIS.

- - - - -

ATTENTION NEWS EDITORS:

YOUR REPRESENTATIVES ARE INVITED TO COVER THE MEETING.

- - - - - 0 - - - - -

FIGURES SHOW A DECLINE IN EMIGRATION

* * * * *

THE LATEST STATISTICS ON EMIGRATION COMPILED BY THE GOVERNMENT SHOW A MARKED DECREASE IN THE NUMBER OF LOCAL RESIDENTS EMIGRATING LAST YEAR.

ANNOUNCING THE STATISTICS, A GOVERNMENT SPOKESMAN SAID TODAY (MONDAY) AN ESTIMATED 53,000 PEOPLE EMIGRATED FROM HONG KONG IN 1993.

COMPARABLE FIGURES FOR 1991 AND 1992 ARE 60,000 AND 66,000 RESPECTIVELY.

"THE STATISTICS ARE BASED ON THE NUMBER OF VISAS ISSUED BY THE CONSULATES OF MAIN DESTINATION COUNTRIES IN HONG KONG, TAKING INTO ACCOUNT THE LEAD TIME FOR THE TAKING UP OF THE VISAS BY THE EMIGRANTS," THE SPOKESMAN SAID.

"THE FIGURES DO NOT INCLUDE IMMIGRANT VISAS ISSUED IN OTHER COUNTRIES TO LOCAL RESIDENTS," HE SAID.

MONDAY, MAY 23, 1994

- 3 -

"THERE ARE INDICATIONS THAT AN INCREASING NUMBER OF PEOPLE ARE OBTAINING IMMIGRANT VISAS OUTSIDE HONG KONG."

COMMENTING ON THE FIGURE FOR 1993, THE SPOKESMAN SAID THE DECREASE WAS POSSIBLY DUE TO THE ECONOMIC DOWNTURN AND REDUCED INTAKE OF SOME DESTINATION COUNTRIES.

ON THE TREND FOR THE FUTURE, HE SAID THE NUMBER OF EMIGRANTS WOULD STILL DEPEND HEAVILY ON THE IMMIGRATION POLICIES OF DESTINATION COUNTRIES.

EMIGRATION IN 1994 IS EXPECTED TO BE AROUND THE 60,000 MARK.

- - - - - 0 - - - - -

IMPLEMENTATION OF UN SANCTIONS AGAINST HAITI

* * * * *

SPECIFIC POWERS FOR THE BETTER IMPLEMENTATION OF A UNITED NATIONS RESOLUTIONS BY THE HONG KONG GOVERNMENT IN EXTENDING A RANGE OF SANCTIONS AGAINST HAITI HAVE BEEN PROVIDED IN A UNITED KINGDOM ORDER IN COUNCIL WHICH COMES INTO FORCE TODAY (MONDAY).

THE RESOLUTION WAS ADOPTED BY THE UNITED NATIONS SECURITY COUNCIL ON MAY 6.

THE ORDER RE-ENACTS WITH CERTAIN MODIFICATIONS, THE PROVISIONS OF THE HAITI (UNITED NATIONS SANCTIONS) ORDER 1993 AND IMPOSES FURTHER RESTRICTIONS PURSUANT TO SECURITY COUNCIL RESOLUTION NO. 917 ON THE EXPORT OF GOODS TO HAITI AND THE SUPPLY OF GOODS TO PERSONS CONNECTED WITH HAITI AND ON THE IMPORTATION OF GOODS THEREFROM.

THE ORDER RESTRICTS CERTAIN RELATED ACTIVITIES INCLUDING THE CARRIAGE OF PROHIBITED GOODS IN SHIPS AND AIRCRAFT.

THE ORDER ALSO PROHIBITS AIRCRAFT FROM TAKING OFF FROM, LANDING IN OR OVER-FLYING HONG KONG IF THEY ARE DESTINED FOR, OR HAVE TAKEN OFF FROM, HAITI, UNLESS THE AIRCRAFT IS CARRYING PASSENGERS AND UNDERTAKING A SCHEDULED JOURNEY FOR THE PURPOSE OF PUBLIC TRANSPORT.

THE ORDER ALSO RESTRICTS THE MAKING OF PAYMENTS UNDER ANY BOND IN RESPECT OF A CONTRACT THE PERFORMANCE OF WHICH IS UNLAWFUL BY VIRTUE OF THE ORDER, AND PROHIBITS THE MAKING OR OBTAINING OF PAYMENTS UNDER CERTAIN INDEMNITIES IN RESPECT OF SUCH BONDS.

MONDAY, MAY 23, 1994

- 4 -

THE GOVERNMENT WILL TAKE ALL NECESSARY MEASURES TO IMPLEMENT FULLY HONG KONG'S OBLIGATIONS UNDER THE ORDER IN COUNCIL.

ENQUIRIES ON THE SUBJECT SHOULD BE DIRECTED TOWARDS THE RESPECTIVE GOVERNMENT DEPARTMENTS AS FOLLOWS:

GENERAL AND PRESS ENQUIRIES:
DUTY OFFICER, GOVERNMENT INFORMATION SERVICES
(TEL NO: 842 8747)

TRADE RELATED MATTERS:
TRADE DEPARTMENT
(TEXTILE - TEL NO: 398 5450)
(NON-TEXTILES - TEL NO: 398 5556/398 5572)

CUSTOMS AND EXCISE DEPARTMENT
(TEL NO: 852 3303)

MARINE MATTERS:
MARINE DEPARTMENT
(TEL NO: 852 4403)

FLIGHTS AND AVIATION RELATED MATTERS:
CIVIL AVIATION DEPARTMENT
(TEL NO: 867 4210 OR 867 4211)

FINANCIAL SERVICES RELATED MATTERS:
FINANCIAL SERVICES BRANCH
(TEL NO: 527 1893)

CONSUMER PRICE INDICES FOR APRIL

* * * * *

THE CONSUMER PRICE INDEX (A) IN APRIL 1994 WAS 7.7% HIGHER THAN IN APRIL 1993, ACCORDING TO FIGURES RELEASED TODAY (MONDAY) BY THE CENSUS AND STATISTICS DEPARTMENT.

THE CORRESPONDING INCREASE IN THE CPI(A) WAS 8.0% IN MARCH. THE SLOWER INCREASE IN APRIL WAS MAINLY DUE TO A MODERATION IN THE PRICES OF MOST FRESH FOOD ITEMS AND IN THE CHARGES FOR MEALS AT RESTAURANTS.

TAKING THE FIRST FOUR MONTHS TOGETHER, THE CPI(A) ROSE BY 7.4% OVER THE SAME PERIOD IN 1993. THIS WAS CONSIDERABLY LOWER THAN THE AVERAGE INCREASE OF 8.5% RECORDED IN 1993.

THE CPI(B) AND THE HANG SENG CPI WERE HIGHER BY 8.2% AND 9.9% RESPECTIVELY IN APRIL 1994 THAN IN THE SAME MONTH LAST YEAR. THE CORRESPONDING INCREASES IN MARCH 1994 WERE 8.2% AND 9.2%.

THE FASTER YEAR-ON-YEAR RATE OF INCREASE IN THE HANG SENG CPI IN APRIL THAN IN MARCH WAS MAINLY DUE TO FASTER INCREASES IN THE RENT FOR PRIVATE DWELLINGS AND THE PRICES OF OUTERCLOTHING, WHICH MORE THAN OFFSET THE EFFECT OF THE SLOWER INCREASE IN FOOD PRICES.

THE COMPOSITE CPI, WHICH IS COMPILED BASED ON THE COMBINED EXPENDITURE PATTERN OF HOUSEHOLDS COVERED BY THE THREE CPIS, SHOWED AN INCREASE OF 8.4% IN APRIL 1994 OVER THE SAME MONTH IN 1993. INCREASE OF THE SAME MAGNITUDE WAS ALSO RECORDED IN MARCH.

COMPARING APRIL 1994 WITH APRIL 1993, RELATIVELY SLOWER PRICE INCREASES THAN THE OVERALL AVERAGE WERE RECORDED FOR FUEL AND LIGHT (2.2% IN THE CPI(A) AND 2.3% IN THE CPI(B)); DURABLE GOODS (2.4% AND 2.6%); FOOD (EXCLUDING MEALS AT RESTAURANTS) (2.9% AND 3.5%); ALCOHOLIC DRINKS AND TOBACCO (5.2% AND 5.9%); AND MISCELLANEOUS GOODS (6.8 % AND 6.1%).

ON THE OTHER HAND, RELATIVELY FASTER PRICE INCREASES THAN THE OVERALL AVERAGE WERE RECORDED FOR MISCELLANEOUS SERVICES (11.7% IN THE CPI(A) AND 10.8% IN THE CPI(B)); HOUSING (11.0% AND 11.4%); TRANSPORT (10.2% AND 9.6%); AND CLOTHING AND FOOTWEAR (8.0% AND 8.4%).

AS FOR MEALS AT RESTAURANTS, THE CORRESPONDING INCREASE WAS 7.9% IN THE CPI(A) AND 7.7% IN THE CPI(B).

COMPARING APRIL 1994 WITH MARCH 1994, THE CPI(A) AND CPI(B) INCREASED BY 0.9% AND 1.3% RESPECTIVELY. HOWEVER, THIS COMPARISON COULD HAVE BEEN AFFECTED BY SEASONAL FACTORS.

FOR THE PERIOD FROM JANUARY TO APRIL 1994, THE CPI(A) AND CPI(B) WERE, ON AVERAGE, HIGHER BY 7.4% AND 7.8% RESPECTIVELY THAN IN THE CORRESPONDING PERIOD IN 1993.

FOR THE 12 MONTHS ENDED APRIL 1994, THE CPI(A) AND CPI(B) WERE, ON AVERAGE, HIGHER BY 8.1% AND 8.3% RESPECTIVELY THAN IN THE PRECEDING 12-MONTH PERIOD.

SEASONALLY ADJUSTED SERIES ARE ALSO AVAILABLE FOR THE CPIS. THE DESEASONALISED CPI(A) AND CPI(B) BOTH INCREASED AT AN AVERAGE RATE OF 0.9% PER MONTH DURING THE THREE MONTHS ENDED APRIL 1994.

FURTHER DETAILS ARE SHOWN IN TABLES 1-2 AND CHARTS 1-4.

MORE DETAILS ARE GIVEN IN THE "CONSUMER PRICE INDEX REPORT" FOR APRIL 1994, WHICH IS AVAILABLE AT \$16.5 PER COPY FROM THE GOVERNMENT PUBLICATIONS CENTRE, GENERAL POST OFFICE BUILDING, GROUND FLOOR, CONNAUGHT PLACE, HONG KONG; OR FROM THE PUBLICATIONS SECTION OF THE CENSUS AND STATISTICS DEPARTMENT, 19TH FLOOR, WANCHAI TOWER, 12 HARBOUR ROAD, WAN CHAI, HONG KONG.

FOR LOCAL AND OVERSEAS MAILINGS, CONTACT SHOULD BE MADE WITH THE INFORMATION SERVICES DEPARTMENT, FRENCH MISSION BUILDING, 1 BATTERY PATH, HONG KONG.

FOR ENQUIRIES ABOUT THE INDICES, PLEASE TELEPHONE THE CONSUMER PRICE INDEX SECTION OF THE CENSUS AND STATISTICS DEPARTMENT AT 805 6403.

DETAILS REGARDING THE HANG SENG CPI ARE CONTAINED IN THE HANG SENG CPI REPORT ISSUED BY THE ECONOMIC RESEARCH DEPARTMENT OF HANG SENG BANK LIMITED.

Table 1 Consumer Price Indices and Rates of Increase for April 1994
(Oct. 89 - Sep. 90 = 100)

Component	CPI(A)		CPI(B)		Hang Seng CPI		Composite CPI	
	Index for Apr 94	% change over Apr 93	Index for Apr 94	% change over Apr 93	Index for Apr 94	% change over Apr 93	Index for Apr 94	% change over Apr 93
Food	137.9	+5.5	140.3	+6.1	142.0	+7.3	139.6	+6.1
Meals bought away from home	150.4	+7.9	150.0	+7.7	149.9	+9.2	150.2	-8.1
Food, excluding meals bought away from home	125.5	+2.9	126.8	+3.5	128.6	+3.7	126.5	-3.3
Housing	160.8	+11.0	162.3	+11.4	168.4	+14.8	163.8	+12.4
Fuel and light	121.9	+2.2	121.4	+2.3	122.1	+2.7	121.8	+2.3
Alcoholic drinks and tobacco	185.6	+5.2	176.5	+5.9	172.0	+6.0	180.5	+5.5
Clothing and footwear	138.6	+8.0	140.8	+8.4	147.5	+10.4	142.5	+9.0
Durable goods	111.9	+2.4	111.7	+2.6	117.2	+2.5	113.4	+2.5
Miscellaneous goods	130.2	+6.8	127.3	+6.1	126.2	+6.0	128.1	+6.3
Transport	146.0	+10.2	144.6	+9.6	143.6	+8.2	144.8	+9.4
Miscellaneous services	154.2	+11.7	149.5	+10.8	141.2	+9.1	148.5	+10.6
All items	143.8	+7.7	144.8	+8.2	147.9	+9.9	145.2	+8.4

The 1989/90-based consumer price indices are based on the expenditure patterns derived from the 1989/90 Household Expenditure Survey. The CPI(A) is based on the expenditure pattern of about 50% of urban households in Hong Kong, which had an average monthly expenditure of \$2,500-\$9,999 in 1989/90. The CPI(B) is based on the expenditure pattern of the next 30% of urban households, which had an average monthly expenditure of \$10,000-\$17,499 in the same period. The Hang Seng CPI is based on the expenditure pattern of the next 10% of urban households, which had an average monthly expenditure of \$17,500-\$37,499 in 1989/90.

Whereas the CPI(A), CPI(B) and Hang Seng CPI are based on the expenditure patterns of groups of households with different magnitudes of household expenditure, the Composite CPI is compiled based on the expenditure pattern of all these households taken together. Thus, while the CPI(A), CPI(B) and Hang Seng CPI show the impact of consumer price changes on different groups of households, the Composite CPI shows the impact of consumer price changes on the household sector generally.

Table 2 Consumer Price Indices for January 1992 - April 1994
(Oct. 89 - Sep. 90 = 100)

<u>Year/month</u>	<u>CPI(A)</u>	<u>CPI(B)</u>	<u>Hang Seng CPI</u>	<u>Composite CPI</u>
1992 January	119.7	119.3	119.4	119.5
February	121.8	121.2	121.0	121.4
March	122.5	121.9	121.8	122.1
April	124.0	123.4	122.9	123.5
May	124.0	123.8	124.2	124.0
June	125.3	125.1	125.2	125.2
July	125.5	125.4	125.4	125.4
August	125.6	125.9	125.8	125.8
September	128.3	127.9	127.5	128.0
October	128.4	128.4	128.6	128.5
November	128.5	129.0	129.9	129.0
December	129.3	129.8	130.0	129.7
1993 January	131.8	131.6	131.5	131.7
February	132.4	132.2	132.0	132.2
March	132.0	132.2	133.1	132.4
April	133.5	133.9	134.5	133.9
May	134.5	134.8	136.3	135.1
June	136.0	135.9	137.1	136.3
July	135.8	136.1	136.9	136.2
August	136.3	136.6	137.4	136.7
September	138.4	138.3	139.2	138.6
October	140.0	139.6	140.7	140.0
November	139.4	139.9	142.2	140.3
December	140.4	140.9	143.3	141.3
1994 January	140.0	140.7	143.4	141.1
February	142.7	142.9	144.9	143.3
March	142.5	143.0	145.3	143.4
April	143.8	144.8	147.9	145.2

Chart 3 Year-on-year Rates of Increase in Hang Seng CPI

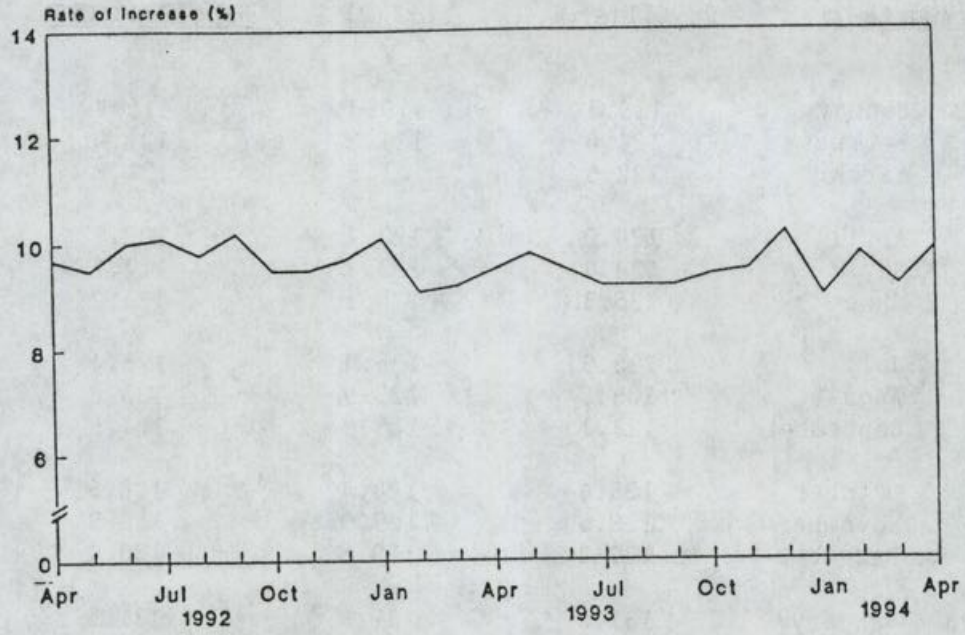


Chart 4 Year-on-year Rates of Increase in Composite CPI

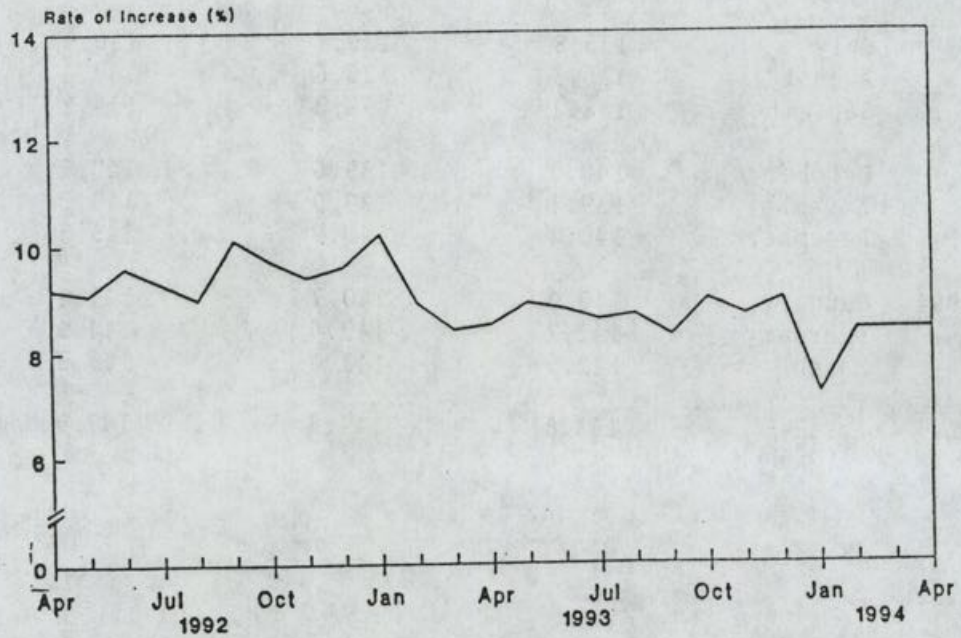


Chart 1 Year-on-year Rates of Increase in CPI(A)

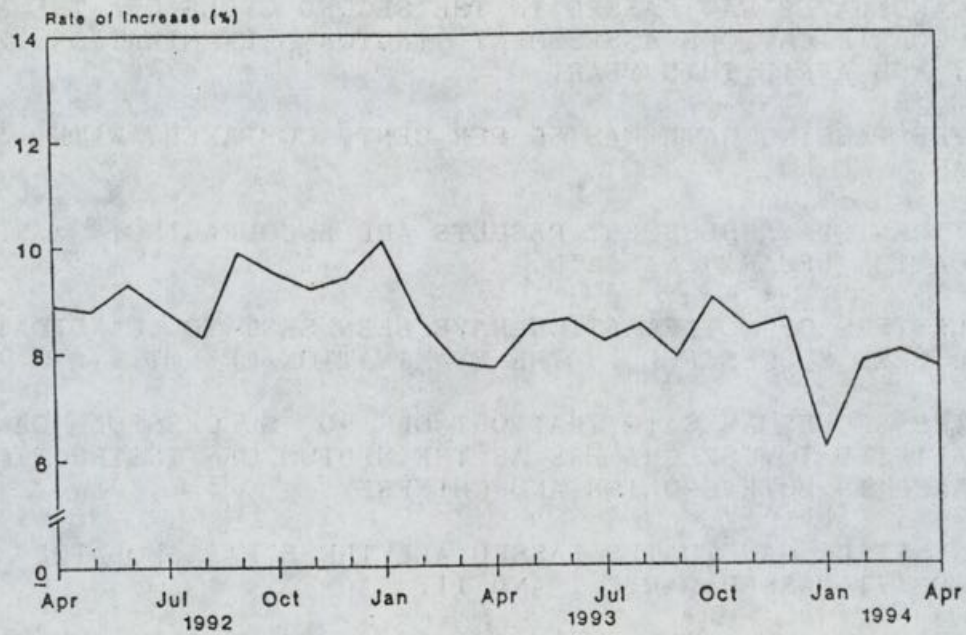
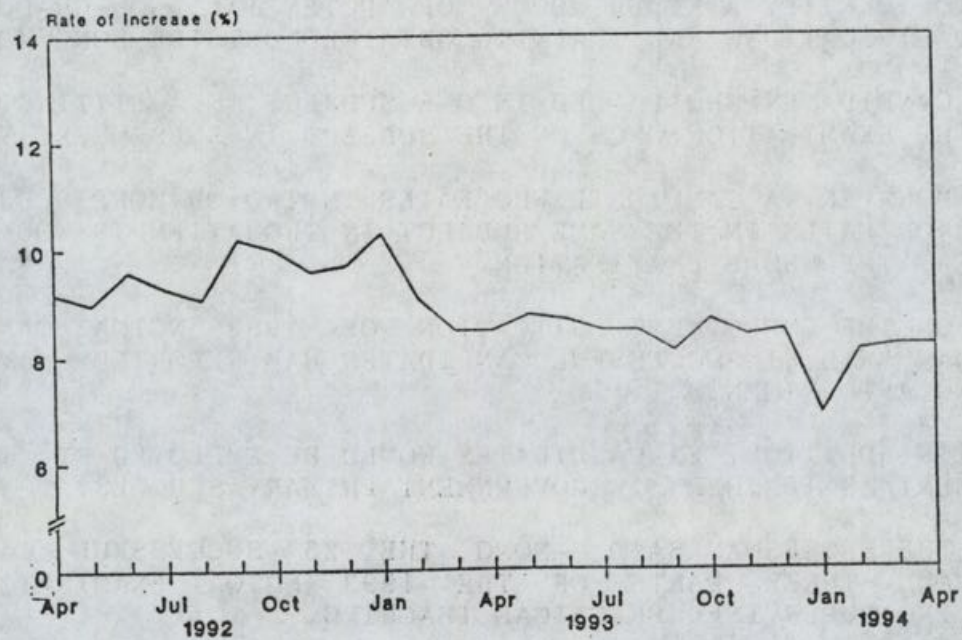


Chart 2 Year-on-year Rates of Increase in CPI(B)



NON-GRADUATE TEACHER ASSESSMENT RESULTS ANNOUNCED

* * * * *

THE EDUCATION DEPARTMENT ANNOUNCED TODAY (MONDAY) THAT 90 OUT OF 137 CANDIDATES HAD PASSED IN THE SECOND CYCLE OF THE NON-GRADUATE TEACHER QUALIFICATIONS ASSESSMENT (NGTQA) EXAMINATION HELD BETWEEN FEBRUARY AND APRIL THIS YEAR.

THE PASSING RATE WAS 66 PER CENT, COMPARED WITH 52 PER CENT LAST YEAR.

"THE 1994 ASSESSMENT RESULTS ARE ENCOURAGING," A SPOKESMAN FOR THE EDUCATION DEPARTMENT SAID.

LETTERS OF NOTIFICATION HAVE BEEN SENT TO CANDIDATES, WHETHER THEY HAD BEEN SUCCESSFUL IN THE EXAMINATION OR NOT.

THE SPOKESMAN SAID THAT OUT OF 90 SUCCESSFUL CANDIDATES, 71 WERE QUALIFIED TO USE CHINESE AS THE MEDIUM OF INSTRUCTION WHILE 19 COULD TEACH IN BOTH ENGLISH AND CHINESE.

NINETEEN CANDIDATES PASSED ALL THREE PARTS OF THE EXAMINATION. A TOTAL OF 71 PASSED PARTS I AND II.

PART I OF THE EXAMINATION IS TO TEST THE CANDIDATES ON GENERAL EDUCATION, PART II ON THE MEDIUM OF INSTRUCTION AND PART III, PROFESSIONAL TRAINING.

THE SPOKESMAN SAID THE NGTQA SCHEME WAS INTRODUCED IN ACCORDANCE WITH RECOMMENDATIONS OF THE EDUCATION COMMISSION REPORT NO. 5 TO IDENTIFY A WIDER POOL OF POTENTIAL NON-GRADUATE TEACHERS WITH QUALIFICATIONS AND TRAINING OBTAINED OUTSIDE HONG KONG.

CANDIDATES WHO FAILED IN ONE SUBJECT IN A SITTING MAY APPLY TO RESIT THE EXAMINATION ONCE ON THE SUBJECT IN SUBSEQUENT YEARS.

HOWEVER, A CANDIDATE WHO FAILS IN TWO OR MORE SUBJECTS IN ONE SITTING OR FAILS IN THE SAME SUBJECT IN TWO ATTEMPTS WOULD BE REQUIRED TO REPEAT THE WHOLE EXAMINATION.

ON THE EMPLOYMENT SITUATION OF 1993 NGTQA CANDIDATES, THE SPOKESMAN SAID 61 SUCCESSFUL CANDIDATES HAD REPORTED HAVING OBTAINED TEACHING APPOINTMENTS.

IN ADDITION, 21 CANDIDATES WOULD BE EMPLOYED BY THE EDUCATION DEPARTMENT AS TEACHERS IN GOVERNMENT PRIMARY SCHOOLS.

THE SPOKESMAN SAID AMONG THE 23 SUCCESSFUL CANDIDATES WHO PASSED ALL THREE PARTS OF THE 1993 NGTQA EXAMINATION, 18 WERE UNDERGOING SUPERVISED PRACTICAL TEACHING.

THEY WOULD BE GIVEN QUALIFIED TEACHER STATUS ON SUCCESSFUL COMPLETION OF THE SUPERVISED TEACHING PERIOD.

THE SPOKESMAN SAID THAT ON THE WHOLE, THE TEACHING PERFORMANCE OF TEACHERS QUALIFIED THROUGH THE NGTQA SCHEME WAS SATISFACTORY.

PLANNING APPLICATION FORM AND GUIDANCE NOTES REVISED
* * * * *

THE TOWN PLANNING BOARD HAS REVISED THE FORM AND GUIDANCE NOTES FOR PLANNING APPLICATIONS MADE UNDER SECTION 16 OF THE TOWN PLANNING ORDINANCE IN RESPECT OF AREAS COVERED BY OUTLINE ZONING PLAN (OZPS), A SPOKESMAN FOR THE BOARD ANNOUNCED TODAY (MONDAY).

THE SPOKESMAN SAID: "THE CURRENT FORM ONLY CATERS FOR THE NEED OF PLANNING APPLICATIONS IN THE MAIN URBAN AREAS AND NEW TOWNS WHERE BASIC INFRASTRUCTURE HAS BEEN PROVIDED.

"THERE IS NO REQUIREMENT FOR DETAILED INFORMATION ON PLANNING PROPOSALS SUCH AS SITE FORMATION AND INFRASTRUCTURAL PROVISIONS.

"WITH THE GRADUAL PUBLICATION OF RURAL OZPS WHICH REPLACE THE DEVELOPMENT PERMISSION AREA PLANS IN THE RURAL NEW TERRITORIES, IT IS NECESSARY TO AMEND THE CURRENT APPLICATION FORM SO THAT THE BOARD WILL HAVE SUFFICIENT INFORMATION TO CONSIDER APPLICATIONS," THE SPOKESMAN ADDED.

SO FAR, A TOTAL OF THREE RURAL OZPS HAVE BEEN PUBLISHED. THEY ARE PING KONG OZP, FA SAM HANG AND KWUN YAM SHAN OZP AND HO CHUNG OZP.

COPIES OF THE REVISED FORMS CAN BE OBTAINED FROM THE PLANNING DEPARTMENT, 16TH FLOOR, MURRAY BUILDING, GARDEN ROAD, HONG KONG; THE TOWN PLANNING BOARD SECRETARIAT, 13TH FLOOR, MURRAY BUILDING; AND THE DISTRICT PLANNING OFFICES OF THE PLANNING DEPARTMENT.

----- 0 -----

WATER STORAGE FIGURE
* * * * *

STORAGE IN HONG KONG'S RESERVOIRS AT 9 AM TODAY (MONDAY) STOOD AT 64.7 PER CENT OF CAPACITY OR 379.403 MILLION CUBIC METRES.

THIS TIME LAST YEAR THE RESERVOIRS CONTAINED 299.432 MILLION CUBIC METRES OF WATER REPRESENTING 51.1 PER CENT OF CAPACITY.

----- 0 -----

CLOSURE OF KWUN TONG UNAUTHORISED STRUCTURE SOUGHT
* * * * *

THE BUILDING AUTHORITY IS SEEKING TO CLOSE AN UNAUTHORISED STRUCTURE IN KWUN TONG SO THAT IT CAN BE DEMOLISHED WITHOUT CAUSING DANGER TO OCCUPANTS AND THE PUBLIC.

THE SINGLE-STOREY STRUCTURE, USED FOR DWELLING PURPOSE, IS ON THE ROOFTOP OF A BUILDING AT 20 YUET WAH STREET.

A NOTICE OF INTENTION APPLYING FOR A CLOSURE ORDER FROM THE HONG KONG DISTRICT COURT UNDER THE BUILDINGS ORDINANCE ON SEPTEMBER 27 WAS POSTED ON THE PREMISES TODAY (MONDAY).

DEMOLITION WORK IS EXPECTED TO START AS SOON AS THE CLOSURE ORDER IS ISSUED.

MONDAY, MAY 23, 1994

- 12 -

HONG KONG MONETARY AUTHORITY
MONEY MARKET OPERATIONS

* * * * *

	\$ MILLION	TIME (HOURS)	CUMULATIVE CHANGE (\$ MILLION)
	-----	-----	-----
OPENING BALANCE IN THE ACCOUNT	1,612	0930	-8
CLOSING BALANCE IN THE ACCOUNT	1,404	1000	-59
CHANGE ATTRIBUTABLE TO :		1100	+100
MONEY MARKET ACTIVITY	+112	1200	+112
LAF TODAY	-320	1500	+112
		1600	+112

LAF RATE 2.50 BID/4.50 OFFER TWI 124.7 *-0.1* 23.5.94

HONG KONG MONETARY AUTHORITY

EF BILLS

EF NOTES/HONG KONG GOVERNMENT BONDS

TERMS	YIELD	TERM	ISSUE	COUPON	PRICE	YIELD
1 WEEK	3.73	18 MONTHS	2511	4.15	97.90	5.71
1 MONTH	3.88	24 MONTHS	2605	6.35	100.63	6.10
3 MONTHS	4.26	29 MONTHS	3610	4.20	95.30	6.41
6 MONTHS	4.74	32 MONTHS	3701	4.60	95.48	6.57
12 MONTHS	5.22	35 MONTHS	3704	6.15	98.92	6.67

TOTAL TURNOVER OF BILLS AND BONDS - 11,354 MN

CLOSED 23 MAY 1994

----- 0 -----