



## DAILY INFORMATION BULLETIN

ISSUED BY GOVERNMENT INFORMATION SERVICES  
BEACONSFIELD HOUSE, HONG KONG. TEL: 5-233191

THURSDAY, SEPTEMBER 11, 1986

<u>CONTENTS</u>	<u>PAGE NO.</u>
SIR EDWARD SEES WIDE SCOPE FOR BRITISH INVESTMENT .....	1
GOVERNOR RETURNING ON SATURDAY .....	3
RETAIL SALES SURVEY RESULTS FOR JUNE RELEASED .....	3
TALKS ON PENSIONS IN PEKING .....	9
NOMINATIONS OPEN FOR KOWLOON CITY DB VACANCY .....	9
SOUTHERN DB TO BEGIN CIVIC EDUCATION DRIVE .....	10
TSUEN WAN COMMITTEE TO STUDY TRANSPORT PLAN .....	11
SECOND PHASE NEIGHBOURHOOD WATCH SCHEME LAUNCHING .....	12
47 TO GET AWARDS FOR SAVING LIVES .....	12
STATUTORY HOLIDAY ON SEPTEMBER 19 .....	13
EASTERN GETS READY FOR FUN DAY .....	13
STUDENTS TO HELP BEAUTIFY ENVIRONMENT .....	14
LAND FOR SEAMEN'S TRAINING CENTRE BEING RECLAIMED .....	15
TRAFFIC CHANGES IN CENTRAL, WAN CHAI .....	15

THURSDAY, SEPTEMBER 11, 1986

- 1 -

SIR EDWARD SEES WIDE SCOPE FOR BRITISH INVESTMENT  
\* \* \* \* \*

THERE IS STILL MUCH ROOM FOR EXPANSION AND DEVELOPMENT OF BRITISH INVESTMENT IN HONG KONG WHERE BRITISH FIRMS CAN AND DO SUCCEED DESPITE THE TERRITORY'S COMPETITIVE NATURE, THE GOVERNOR, SIR EDWARD YOUDE, SAID IN THE UNITED KINGDOM TODAY (THURSDAY).

SPEAKING ON +HONG KONG: OPPORTUNITIES FOR TRADE AND INVESTMENT+ AT THE ANNUAL DINNER IN LONDON OF THE HONG KONG TRADE DEVELOPMENT COUNCIL, SIR EDWARD SAID IT WAS NOT WIDELY ENOUGH RECOGNISED THAT MANY BRITISH COMPANIES WERE ACTIVE AND SUCCESSFUL IN THE TERRITORY.

HE CITED EXAMPLES RANGING FROM BANKS AND INSURANCE COMPANIES IN THE FINANCIAL SECTOR TO COMPANIES CARRYING OUT PUBLIC WORKS CONTRACTS. IN ADDITION, BRITISH EQUIPMENT WAS HEAVILY USED IN SECTORS RANGING FROM ENERGY TO COMMUNICATIONS AND TRANSPORT, WITH, FOR EXAMPLE, THERE BEING SEVERAL THOUSAND BRITISH BUSES ON THE ROADS.

SIR EDWARD ALSO DESCRIBED HONG KONG AS A WELL-PLACED CENTRE FOR DEVELOPING TRADE AND INVESTMENT IN CHINA AND THE ASIAN PACIFIC REGION.

HE SAID SOME 50 BRITISH COMPANIES HAD SET UP FACTORIES WITH A TOTAL INVESTMENT OF MORE THAN POUND STERLING 70 MILLION.

+BUT BRITISH INVESTMENT IN OUR MANUFACTURING SECTOR ACCOUNTS FOR LESS THAN SEVEN PER CENT OF THE TOTAL OVERSEAS INVESTMENTS IN OUR MANUFACTURING SECTOR, FAR BEHIND THE UNITED STATES AND JAPAN,+ HE SAID.

+HONG KONG IS AN ATTRACTIVE OFF-SHORE MANUFACTURING BASE FOR FOREIGN COMPANIES AND THERE IS NO REASON WHY BRITISH COMPANIES CANNOT FOLLOW THE EXAMPLES OF THE U.S. AND JAPAN IN ENHANCING THE COMPETITIVENESS OF THEIR PRODUCTS IN WORLD MARKETS, PARTICULARLY FOR THE ASIAN PACIFIC REGION.+

SIR EDWARD NOTED THAT BRITAIN RANKED AS HONG KONG'S FIFTH LARGEST TRADING PARTNER. LAST YEAR THE TERRITORY SOLD TO BRITAIN GOODS WORTH ABOUT POUND STERLING 960 MILLION AND IN RETURN BOUGHT GOODS WORTH ABOUT POUND STERLING 830 MILLION - MAKING THE TOTAL MERCHANDISE TRADE NEARLY POUND STERLING 1.8 BILLION WITHOUT TAKING INTO ACCOUNT THE VERY SUBSTANTIAL TRADE IN SERVICES.

HONG KONG STOOD AS ONE OF BRITAIN'S LARGEST MARKETS IN THE FAR EAST, SECOND ONLY TO JAPAN. DESPITE AN OVERALL BALANCE OF TRADE IN HONG KONG'S FAVOUR, THE TERRITORY ACTUALLY BOUGHT FROM BRITAIN PER HEAD OF POPULATION NINE TIMES WHAT BRITAIN BOUGHT FROM IT.

THE GOVERNOR ALSO REFERRED TO HONG KONG'S CONCERN AT THE GROWTH OF PROTECTIONIST SENTIMENT IN ITS MAJOR MARKETS, PARTICULARLY THE UNITED STATES. AS HE HAD DONE DURING HIS RECENT NORTH AMERICAN TOUR, HE STRESSED THAT THE TERRITORY WAS A FIRM BELIEVER IN AND A REAL PRACTITIONER OF FREE TRADE PRINCIPLES.

/HE SAID: .....

THURSDAY, SEPTEMBER 11, 1986

- 2 -

HE SAID: +WE APPRECIATE THE RECOGNITION IN THE EUROPEAN COMMUNITY'S MANDATE ON TEXTILES NEGOTIATIONS THAT SUPPLIERS WITH OPEN MARKETS SHOULD BE GIVEN MORE FAVOURABLE TREATMENT. WE SINCERELY HOPE THAT THIS VERY APPROPRIATE PROVISION IN THE MANDATE WILL BE TRANSLATED INTO ACTION IN THE HONG KONG-EUROPEAN ECONOMIC COMMUNITY NEGOTIATIONS TO BE HELD IN BRUSSELS LATER THIS MONTH.+

REVIEWING HONG KONG'S ECONOMIC DEVELOPMENTS SINCE HE LAST SPOKE TO A LONDON BUSINESS AUDIENCE, AT THE STOCK EXCHANGE IN JANUARY 1985, SIR EDWARD NOTED THERE HAD BEEN A RESUMPTION IN POSITIVE GROWTH IN DOMESTIC EXPORTS WHICH, IN THE FIRST SIX MONTHS OF THIS YEAR, HAD RISEN BY EIGHT PER CENT.

THE ANNUAL RATE OF INCREASE IN CONSUMER PRICES STOOD AT LESS THAN THREE PER CENT AND THE TERRITORY WAS WELL ON THE WAY TO ACHIEVING THE FORECAST REAL GROWTH RATE OF 4.5 PER CENT IN GOP.

SIR EDWARD SAID THE JOINT LIAISON GROUP SET UP UNDER THE SINO-BRITISH JOINT DECLARATION ON HONG KONG'S FUTURE CONTINUED TO MAKE GOOD PROGRESS. HE REFERRED TO THE PARTICULAR IMPORTANCE OF THE AGREEMENT EARLIER THIS YEAR THAT HONG KONG SHOULD BECOME A CONTRACTING PARTY TO THE GENERAL AGREEMENT ON TARIFFS AND TRADE, AND REMAIN SO AFTER 1997.

+IT IS A GOOD OMEN FOR THE FUTURE THAT THIS KEYSTONE OF OUR WORLD TRADING POSITION HAS BEEN SET IN PLACE SO QUICKLY. IT AUGURS WELL FOR CONTINUING CO-OPERATION BETWEEN BRITAIN AND CHINA, AND SHOWS A HEARTENING RECOGNITION BY THE WORLD'S TRADING NATIONS OF THE IMPORTANCE OF THE SINO-BRITISH AGREEMENT+, HE SAID.

HE NOTED THAT THE OPENING UP OF CHINA'S ECONOMY HAD ADDED A NEW DIMENSION TO HONG KONG'S ROLE IN INTERNATIONAL TRADE AND THE OPPORTUNITIES IT COULD OFFER TO BRITAIN. THE TERRITORY'S WELL-DEVELOPED INFRASTRUCTURE AND ITS FINANCIAL AND OTHER SERVICES COULD BE OF DIRECT BENEFIT TO CHINA IN ITS DRIVE TO EXPAND TRADE AND INVESTMENT AND TO BRITISH COMPANIES SEEKING A ROLE IN THAT EXPANSION.

HONG KONG'S TRADE IN GOODS AND SERVICES WITH CHINA HAD ALREADY INCREASED SUBSTANTIALLY IN RECENT YEARS.

SIR EDWARD ALSO POINTED OUT THAT HONG KONG PRODUCTS HAD INCREASINGLY EARNED A REPUTATION FOR QUALITY AND RELIABILITY, AND ITS MANUFACTURERS WERE ABLE TO MEET THE REQUIREMENT OF BUYERS IN TERMS OF BOTH COMPETITIVE PRICES AND IN QUALITY AND RELIABILITY OF DELIVERY.

/+THIS HAS .....

THURSDAY, SEPTEMBER 11, 1986

- 3 -

+THIS HAS BEEN MADE POSSIBLE THROUGH THE INCREASED USE OF ADVANCED PRODUCTION TECHNIQUES AND OF GOOD INDUSTRIAL DESIGN, AND THROUGH THE INCREASINGLY HIGH STANDARD OF OUR PRODUCT TESTING SERVICES. WE NATURALLY WELCOME BRITISH TECHNOLOGY TO ENHANCE OUR CAPABILITIES EVEN FURTHER.+

IN CONCLUSION, HE SAID THE OPTIMISM HE HAD EXPRESSED 18 MONTHS AGO WAS NOT MISPLACED, AND IT WOULD REMAIN THE CONSTANT OBJECTIVE OF AN UNREMITTING EFFORT ON THE PART OF THE HONG KONG GOVERNMENT TO MAINTAIN HONG KONG AS A VIBRANT AND EXCITING CITY.

- - - - 0 - - - -

GOVERNOR RETURNING ON SATURDAY  
\* \* \* \* \*

THE GOVERNOR, SIR EDWARD YOUDE, AND THREE UNOFFICIAL MEMBERS OF THE EXECUTIVE COUNCIL WILL RETURN TO HONG KONG FROM LONDON ON SATURDAY (SEPTEMBER 13).

THEY WILL BE ARRIVING ON FLIGHT BR 382, ETA 5.55 PM.

- - - - -

NOTE TO EDITORS:

THERE WILL BE A PHOTOGRAPHIC FACILITY FOR MEDIA REPRESENTATIVES COVERING THEIR ARRIVAL ON SATURDAY. THEY SHOULD ASSEMBLE IN THE AIRPORT PRESS ROOM BY 5.05 PM.

GIS OFFICERS WILL BE ON HAND TO ASSIST.

- - - - 0 - - - -

RETAIL SALES SURVEY RESULTS FOR JUNE RELEASED  
\* \* \* \* \*

THE VALUE OF TOTAL RETAIL SALES IN JUNE 1986, PROVISIONALLY ESTIMATED AT \$5 440 MILLION, WAS 5 PER CENT HIGHER THAN IN JUNE 1985 WHILE THEIR VOLUME WAS 1 PER CENT HIGHER, ACCORDING TO THE PROVISIONAL RESULTS OF A SURVEY RELEASED TODAY BY THE CENSUS AND STATISTICS DEPARTMENT.

COMPARED WITH JUNE 1985, RETAIL SALES OF CLOTHING, FOOTWEAR AND ALLIED PRODUCTS INCREASED BY 23 PER CENT IN VALUE AND 15 PER CENT IN VOLUME. CONSUMER DURABLES WENT UP BY 11 PER CENT IN SALES VALUE AND 3 PER CENT IN SALES VOLUME, AND FOODSTUFFS, ALCOHOLIC DRINKS AND TOBACCO ROSE BY 4 PER CENT AND 3 PER CENT IN SALES VALUE AND VOLUME RESPECTIVELY.

/RETAIL SALES .....

THURSDAY, SEPTEMBER 11, 1986

- 4 -

RETAIL SALES OF +OTHER CONSUMER GOODS+ INCREASED BY 1 PER CENT IN VALUE BUT DECREASED BY 4 PER CENT IN VOLUME. FUELS WENT DOWN BY 14 PER CENT IN SALES VALUE BUT RECORDED A SLIGHT INCREASE OF 1 PER CENT IN SALES VOLUME.

ANALYSED BY SELECTED TRADES, RETAIL SALES OF MOTOR VEHICLES AND PARTS INCREASED CONSIDERABLY IN VALUE AND MODERATELY IN VOLUME.

CONSUMER DURABLES OTHER THAN MOTOR VEHICLES AND PARTS ROSE SLIGHTLY IN SALES VALUE AND VOLUME. BOTH SUPERMARKETS AND DEPARTMENT STORES RECORDED SLIGHT INCREASES IN SALES VALUE, BUT THE FORMER RECORDED ALMOST NO CHANGE IN SALES VOLUME WHILE THE LATTER RECORDED A SLIGHT DECREASE IN SALES VOLUME.

COMPARING THE SECOND QUARTER OF 1986 WITH THE SAME QUARTER IN 1985, TOTAL RETAIL SALES INCREASED BY 4 PER CENT IN VALUE AND 1 PER CENT IN VOLUME. RETAIL SALES OF CLOTHING, FOOTWEAR AND ALLIED PRODUCTS SHOWED INCREASES OF 17 PER CENT IN VALUE AND 10 PER CENT IN VOLUME.

FOODSTUFFS, ALCOHOLIC DRINKS AND TOBACCO RECORDED INCREASES OF 4 PER CENT IN BOTH SALES VALUE AND VOLUME. CONSUMER DURABLES AND +OTHER CONSUMER GOODS+ ROSE BY 5 PER CENT AND 2 PER CENT RESPECTIVELY IN SALES VALUE, BUT BOTH OF THEM DROPPED BY 2 PER CENT IN SALES VOLUME.

FUELS SHOWED DECREASES OF 13 PER CENT IN SALES VALUE AND 1 PER CENT IN SALES VOLUME. RETAIL SALES OF MOTOR VEHICLES AND PARTS ROSE MODERATELY IN VALUE BUT DECREASED SLIGHTLY IN VOLUME.

SUPERMARKETS SHOWED SLIGHT INCREASES IN BOTH SALES VALUE AND VOLUME. RETAIL SALES OF DEPARTMENT STORES AND CONSUMER DURABLES OTHER THAN MOTOR VEHICLES AND PARTS WENT UP SLIGHTLY IN VALUE BUT DROPPED SLIGHTLY IN VOLUME.

WHEN COMPARED WITH MAY 1986, AND BEARING IN MIND THAT THIS COMPARISON IS AFFECTED BY SEASONAL FACTORS, TOTAL RETAIL SALES FOR JUNE 1986 DROPPED BY 5 PER CENT IN VALUE AND 6 PER CENT IN VOLUME. RETAIL SALES OF CLOTHING, FOOTWEAR AND ALLIED PRODUCTS DECREASED BY 11 PER CENT IN BOTH VALUE AND VOLUME TERMS, AND THOSE OF +OTHER CONSUMER GOODS+ DECREASED BY 9 PER CENT IN VALUE AND 10 PER CENT IN VOLUME.

FOODSTUFFS, ALCOHOLIC DRINKS AND TOBACCO WENT DOWN BY 1 PER CENT IN SALES VALUE AND 4 PER CENT IN SALES VOLUME, WHILE CONSUMER DURABLES RECORDED NEGLIGIBLE CHANGES IN SALES VALUE AND VOLUME. RETAIL SALES OF FUELS FELL BY 3 PER CENT IN VALUE BUT ROSE BY 1 PER CENT IN VOLUME.

/ANALYSED BY .....

THURSDAY, SEPTEMBER 11, 1986

- 5 -

ANALYSED BY SELECTED TRADES, RETAIL SALES OF SUPERMARKETS, MOTOR VEHICLES AND PARTS AND DEPARTMENT STORES SHOWED SLIGHT INCREASES IN BOTH VALUE AND VOLUME TERMS. ON THE OTHER HAND, CONSUMER DURABLES OTHER THAN MOTOR VEHICLES AND PARTS HAD ALMOST NO CHANGE IN SALES VALUE AND VOLUME.

A NEW RETAIL SALES INDEX SERIES BASED ON THE PERIOD OCTOBER 1984 TO SEPTEMBER 1985 (MONTHLY AVERAGE IN THE PERIOD TAKEN AS 100) IS ALSO RELEASED BY THE DEPARTMENT, REPLACING THE OLD SERIES WHICH WAS BASED ON 1980 AND INTRODUCED IN 1982.

THE RETAIL SALES INDEXES WERE REBASED IN ORDER THAT THE WEIGHTS USED IN DERIVING THE PRICE DEFLATORS FOR COMPILING THE VOLUME INDEXES CAN BETTER REFLECT THE UPDATED PATTERN OF RETAIL SALES.

TABLE 1 PRESENTS THE REVISED TOTAL RETAIL SALES FIGURE FOR MAY 1986 AND THE PROVISIONAL FIGURE FOR JUNE 1986.

TABLE 2 SHOWS THE NEW VALUE AND VOLUME INDEXES OF RETAIL SALES IN MAY 1986 AND JUNE 1986 (A) FOR ALL RETAIL SALES, (B) BY MAJOR TRADE GROUPS AND (C) BY SELECTED TRADES (WHICH FORM PART OF THE RELEVANT MAJOR TRADE GROUPS), WITH AVERAGE RETAIL SALES FROM OCTOBER 1984 TO SEPTEMBER 1985 TAKEN AS 100.

COMPARISONS OF JUNE 1986 RESULTS WITH THOSE OF MAY 1986 AND WITH THOSE OF JUNE 1985 AND COMPARISONS OF TOTAL RETAIL SALES IN THE SECOND QUARTER OF 1986 WITH THE SAME QUARTER IN 1985 ARE ALSO GIVEN. TABLE 3 PRESENTS THE TOTAL RETAIL SALES AND THE NEW RETAIL SALES INDEX SERIES FROM 1981 TO JUNE 1986.

GRAPHS 1 AND 2 DEPICT RESPECTIVELY THE MOVEMENTS OF THE NEW VALUE AND VOLUME INDEXES OF TOTAL RETAIL SALES, INCLUDING THE SEASONALLY ADJUSTED INDEXES AND TRENDS, FROM OCTOBER 1984 TO MAY 1986.

THE REPORT CONTAINING THE ANALYSIS OF THE JUNE 1986 SURVEY RESULTS IS ON SALE AT THE GOVERNMENT PUBLICATION SALES CENTRE, GENERAL POST OFFICE BUILDING, CONNAUGHT PLACE, AT \$1 PER COPY.

ENQUIRIES ABOUT THE SURVEY RESULTS MAY BE DIRECTED TO THE WHOLESALE AND RETAIL TRADE STATISTICS SECTION OF THE CENSUS AND STATISTICS DEPARTMENT ON 3-7216024.

/TABLE 1 .....

TABLE 1 : TOTAL RETAIL SALES

Total Retail Sales for June 1986 (Provisional Figure) = HK\$5 440 million  
 for May 1986 (Revised Figure) = HK\$5 736 million

TABLE 2 : VALUE AND VOLUME INDEXES OF RETAIL SALES  
FOR MAY AND JUNE 1986

(Monthly average of Oct. 84 - Sept. 85 = 100)

	Index of Retail Sales	May 1986	June 1986 (Provisional figures)	June 1986 compared with May 1986		June 1986 compared with June 1985		Apr. - June 86 compared with Apr. - June 85	
				Points	%	Points	%	Points	%
<b>(A) FOR ALL RETAIL TRADES</b>									
	Value	102	97	- 5	- 5	+ 5	+ 5	+ 4	+ 4
	Volume	99	93	- 6	- 6	+ 1	+ 1	+ 1	+ 1
<b>(B) BY MAJOR TRADE GROUPS</b>									
Foodstuffs, alcoholic drinks and tobacco	Value	104	103	- 1	- 1	+ 4	+ 4	+ 4	+ 4
	Volume	105	101	- 4	- 4	+ 3	+ 3	+ 4	+ 4
Fuels	Value	89	87	- 2	- 3	- 15	- 14	- 13	- 13
	Volume	101	102	+ 1	+ 1	+ 1	+ 1	- 1	- 1
Clothing, footwear and allied products	Value	115	102	- 13	- 11	+ 19	+ 23	+ 16	+ 17
	Volume	105	93	- 12	- 11	+ 12	+ 15	+ 9	+ 10
Consumer durables	Value	108	108	*	*	+ 11	+ 11	+ 5	+ 5
	Volume	100	100	*	*	+ 3	+ 3	- 2	- 2
Other consumer goods	Value	98	89	- 9	- 9	+ 1	+ 1	+ 2	+ 2
	Volume	93	84	- 9	- 10	- 3	- 4	- 2	- 2
<b>(C) BY SELECTED TRADES</b>									
Supermarkets	Value	106	112	+ 6	+ 6	+ 2	+ 2	+ 3	+ 2
	Volume	103	109	+ 6	+ 5	- 1	*	+ 1	+ 1
Motor vehicles and parts	Value	121	123	+ 2	+ 2	+ 27	+ 28	+ 14	+ 14
	Volume	104	105	+ 1	+ 1	+ 10	+ 10	- 2	- 2
Consumer durables other than motor vehicles and parts	Value	104	103	*	*	+ 6	+ 6	+ 2	+ 2
	Volume	99	99	*	*	+ 1	+ 1	- 3	- 3
Department stores	Value	88	89	+ 2	+ 2	+ 4	+ 5	+ 4	+ 4
	Volume	81	82	+ 1	+ 1	- 3	- 3	- 2	- 2

- Notes :
- "Foodstuffs, alcoholic drinks and tobacco" includes "supermarkets".
  - "Consumer durables" includes "motor vehicles and parts".
  - "Other consumer goods" includes "department stores".
  - Figures denoting changes are derived from the unrounded index figures.
  - \* denotes change of less than 0.5.

TABLE 3 : VALUE OF TOTAL RETAIL SALES AND INDEX OF RETAIL SALES

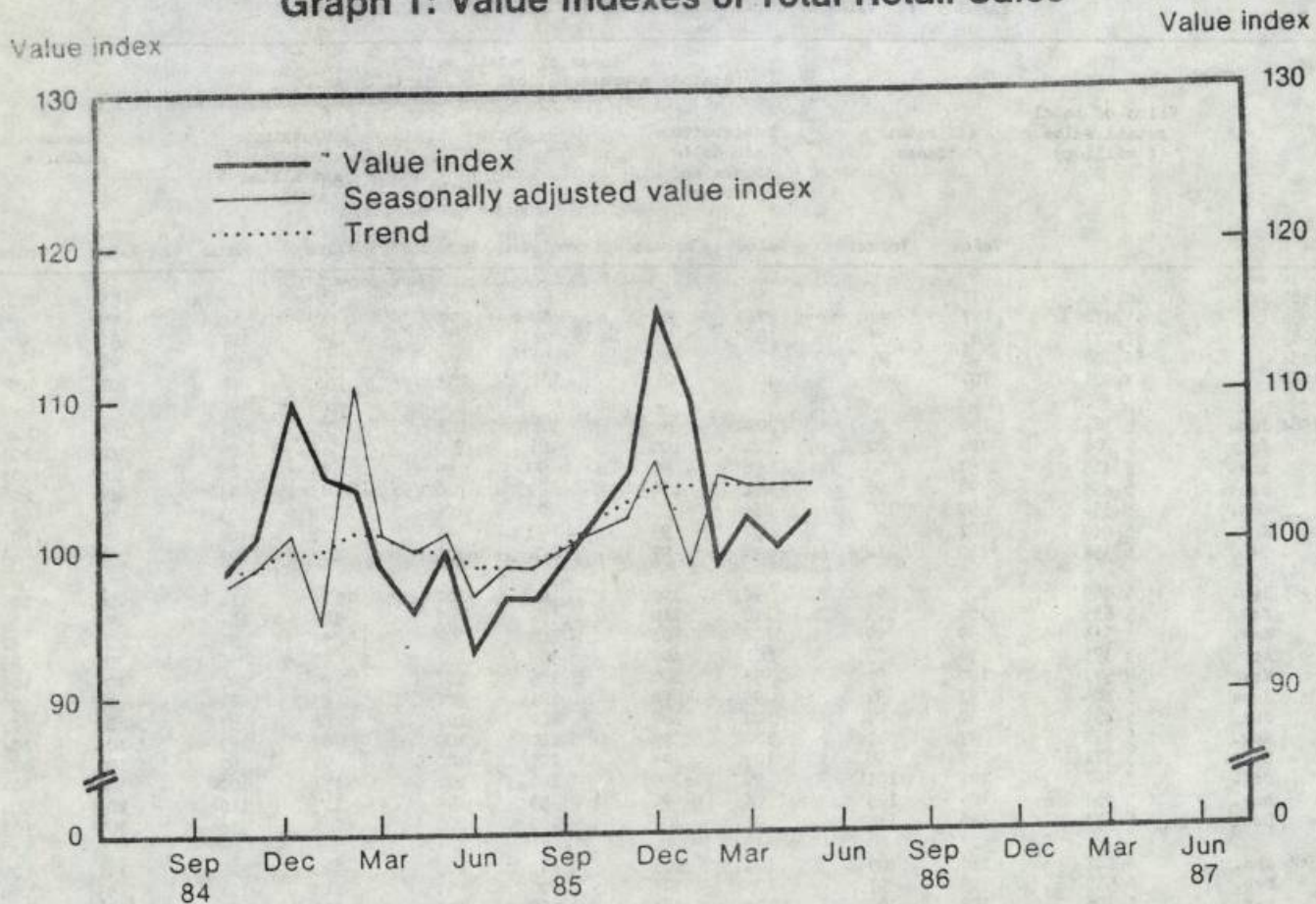
	Value of total retail sales (\$ million)	Index of retail sales (Monthly average of Oct. 84 - Sept. 85 = 100)									
		All retail trades		Foodstuffs, alcoholic drinks and tobacco		Fuels		Clothing, footwear and allied products		Consumer durables	
		Value	Volume	Value	Volume	Value	Volume	Value	Volume	Value	Volume
1981	48,960	73	95	68	90	69	89	62	88	81	101
1982	51,471	77	92	74	88	80	97	66	84	77	91
1983	57,377	85	93	86	93	94	98	75	89	81	91
1984	66,108	98	99	98	98	99	99	93	99	98	99
1985	67,901	101	101	101	101	101	100	104	102	101	101
1984 June	5 363	96	96	100	98	101	100	79	83	105	106
July	5 704	102	102	101	100	101	100	84	89	107	108
Aug.	5 415	97	98	98	97	99	99	79	85	100	101
Sept.	5 495	98	98	102	100	99	100	88	94	100	100
Oct.	5 556	99	100	94	95	100	101	99	103	98	97
Nov.	5 640	101	101	92	93	98	99	101	100	97	97
Dec.	6 154	110	110	97	99	100	101	123	122	98	98
1985 Jan.	5 889	105	106	98	100	100	100	116	118	105	105
Feb.	5 839	104	105	110	110	89	89	119	124	96	96
Mar.	5 543	99	99	102	101	103	102	94	96	97	97
Apr.	5 393	96	95	101	100	102	101	97	96	95	95
May	5 577	100	99	99	100	105	104	99	97	105	109
June	5 186	93	92	99	98	101	101	83	81	97	97
July	5 452	97	97	102	102	102	102	88	87	102	102
Aug.	5 413	97	97	100	99	100	100	87	87	103	104
Sept.	5 571	99	98	107	103	100	100	93	90	102	102
Oct.	5 707	102	101	95	95	102	102	111	107	101	102
Nov.	5 857	105	103	94	95	99	99	117	110	103	102
Dec.	6 473	116	114	101	103	102	102	142	134	105	103
1986 Jan.	6 147	110	109	104	106	101	101	130	128	112	109
Feb.	5 539	99	97	105	104	90	90	115	114	93	90
Mar.	5 706	102	100	104	104	99	102	106	103	99	95
Apr.	5 578	100	97	104	105	92	100	111	103	101	94
May	5 736	102	99	104	105	89	101	115	105	108	100
June*	5 440	97	93	103	101	87	102	102	93	108	100

	Value	Volume	Index of retail sales (Monthly average of Oct. 84 - Sept. 85 = 100)									
			Other consumer goods		Supermarkets		Motor vehicles and parts		Consumer durables other than motor vehicles and parts		Department stores	
			Value	Volume	Value	Volume	Value	Volume	Value	Volume	Value	Volume
1981	75	96	45	64	126	192	67	80	66	84		
1982	80	95	56	71	89	119	73	85	72	85		
1983	89	95	74	84	64	73	86	95	80	86		
1984	100	100	95	96	79	82	103	103	96	96		
1985	101	100	103	103	102	101	101	101	102	101		
1984 June	93	92	106	107	77	79	113	112	80	80		
July	104	104	107	108	87	89	113	113	81	81		
Aug.	98	99	102	103	78	79	106	106	97	97		
Sept.	97	97	101	102	85	86	104	103	81	81		
Oct.	103	103	90	91	91	92	100	99	96	96		
Nov.	108	108	84	85	90	91	100	99	100	99		
Dec.	121	122	98	100	89	90	100	100	144	145		
1985 Jan.	107	109	87	88	106	107	105	105	120	122		
Feb.	104	104	114	116	97	98	95	95	112	113		
Mar.	99	100	95	95	94	94	98	98	92	93		
Apr.	93	92	94	93	102	101	94	93	81	80		
May	95	94	107	106	115	115	107	107	87	86		
June	88	87	110	109	96	95	98	98	85	85		
July	94	94	110	109	102	102	101	102	89	89		
Aug.	94	93	104	103	108	107	102	103	108	107		
Sept.	95	94	106	105	109	108	100	100	86	85		
Oct.	104	102	99	98	99	97	102	103	106	102		
Nov.	110	107	98	97	99	94	104	104	113	107		
Dec.	125	122	114	112	98	93	107	106	147	140		
1986 Jan.	108	107	108	107	127	116	108	107	126	124		
Feb.	96	94	122	120	104	94	89	88	94	93		
Mar.	102	98	109	107	98	87	99	97	92	89		
Apr.	95	91	101	99	112	98	97	93	87	82		
May	98	93	106	103	121	104	104	99	88	81		
June*	89	84	112	109	123	105	103	99	89	82		

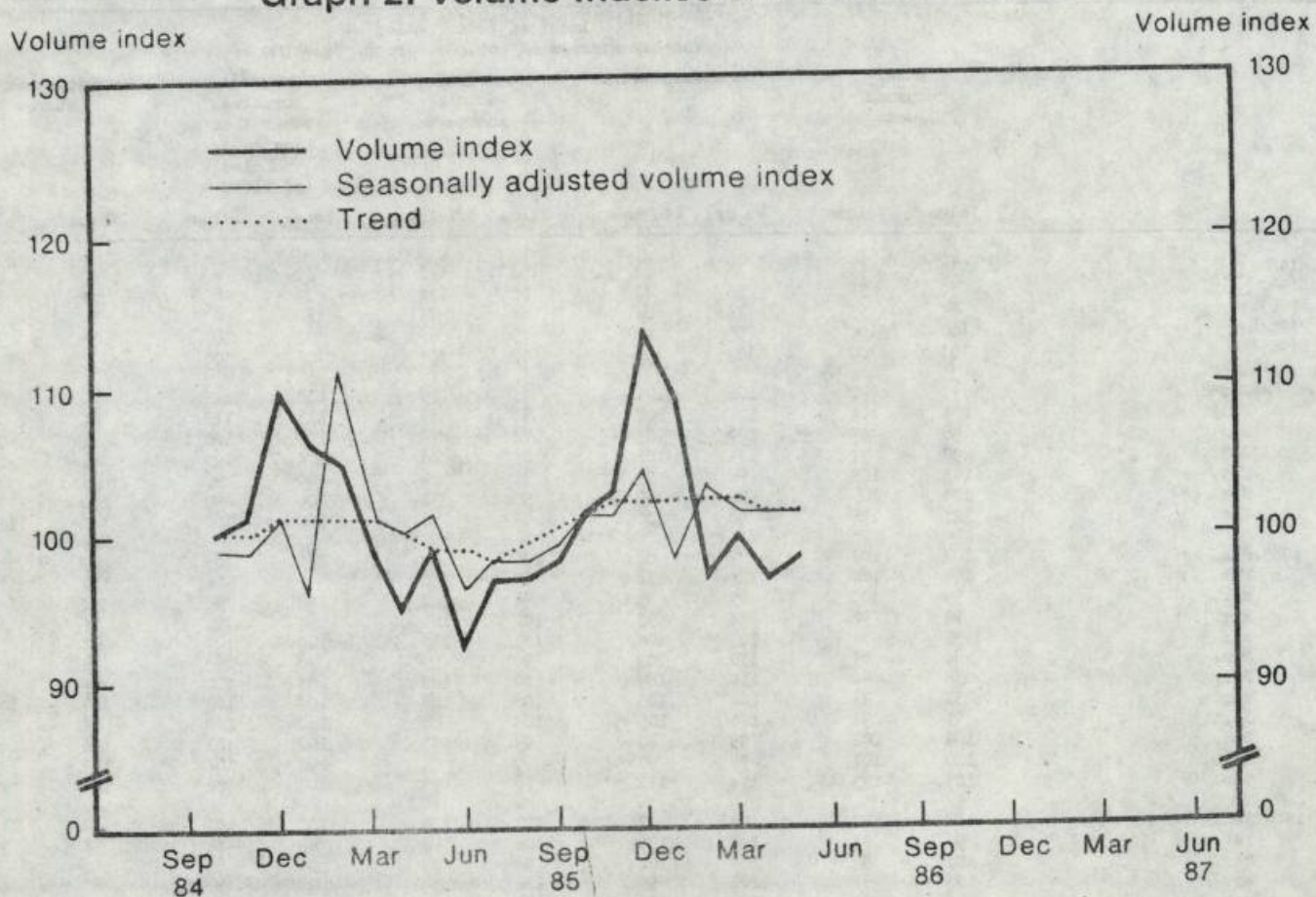
\* Provisional figures

/Graph 1: .....

**Graph 1: Value Indexes of Total Retail Sales**



**Graph 2: Volume Indexes of Total Retail Sales**



Notes: (1) Monthly average of Oct. 84 - Sept. 85 = 100  
 (2) The seasonally adjusted value and volume indexes and Henderson trends are compiled using the X-11 variant seasonal adjustment program of the U.S. Bureau of the Census.

----- 0 -----

THURSDAY, SEPTEMBER 11, 1986

- 9 -

TALKS ON PENSIONS IN PEKING  
\* \* \* \* \*

A TEAM OF OFFICIALS WILL LEAVE FOR PEKING ON TUESDAY (SEPTEMBER 23) FOR FURTHER DISCUSSIONS WITH THE CHINESE ON THE PROPOSED NEW PENSION SCHEME FOR THE CIVIL SERVICE.

THE TEAM WILL AGAIN BE LED BY DEPUTY SECRETARY FOR THE CIVIL SERVICE, MR HAIDER BARMA, AND WILL INCLUDE:

MR KEITH SHIPLEY,	PRINCIPAL ASSISTANT SECRETARY FOR THE CIVIL SERVICE
MR ROY FOSTER,	FROM THE BRITISH GOVERNMENT ACTUARY'S DEPARTMENT AND
MRS CARRIE WILLIS,	CHIEF EXECUTIVE OFFICER (PENSIONS) CIVIL SERVICE BRANCH

AT THE LAST TALKS A CONSIDERABLE AMOUNT OF MATERIAL ON THE NEW PENSION SCHEME WAS HANDED TO THE CHINESE SIDE WHICH REQUIRED TIME TO STUDY.

THIS SECOND ROUND OF TALKS WILL BE TO ANSWER ANY FURTHER QUESTIONS THE CHINESE SIDE MAY HAVE CONCERNING THE NEW SCHEME.

THE TEAM ARE EXPECTED TO RETURN TO HONG KONG ON SEPTEMBER 28.

- - - - 0 - - - -

NOMINATIONS OPEN FOR KOWLOON CITY DB VACANCY  
\* \* \* \* \*

NOMINATION OF CANDIDATES FOR A VACANCY IN THE HO MAN TIN SOUTH CONSTITUENCY OF THE KOWLOON CITY DISTRICT BOARD MAY BE MADE FROM TOMORROW (FRIDAY) UNTIL SEPTEMBER 26.

THE VACANCY FOLLOWS THE RESIGNATION OF AN ELECTED MEMBER, MR LEE WAI-HAU, ON AUGUST 9.

A BY-ELECTION WILL BE HELD ON OCTOBER 16 IF THERE ARE TWO OR MORE NOMINATIONS.

ANY REGISTERED VOTER WHO HAS LIVED IN HONG KONG FOR 10 YEARS, IMMEDIATELY PRECEDING THE NOMINATION DATE, IS ELIGIBLE TO BE NOMINATED FOR THE BY-ELECTION.

A SPOKESMAN FOR THE CITY AND NEW TERRITORIES ADMINISTRATION SAID A CANDIDATE HAD TO BE NOMINATED BY 10 ELECTORS, INCLUDING ONE PROPOSER AND ONE SECONDER, IN THE CONSTITUENCY.

+HOWEVER, HE NEED NOT LIVE IN THE CONSTITUENCY OR DISTRICT IN WHICH HE IS STANDING FOR ELECTION,+ THE SPOKESMAN SAID.

THURSDAY, SEPTEMBER 11, 1986

- 10 -

+BEFORE SUBMITTING THE NOMINATION PAPER IN PERSON TO THE KOWLOON CITY DISTRICT OFFICER, WHO WILL BE THE RETURNING OFFICER, A CANDIDATE IS REQUIRED TO PLACE A DEPOSIT OF \$1 000 WITH THE TREASURY WHICH WILL BE RETURNED TO HIM IF HE POLLS NOT LESS THAN ONE EIGHTH OF THE VOTES CAST,+ HE SAID.

NOMINATION FORMS ARE AVAILABLE AT ALL DISTRICT OFFICES AND THE REGISTRATION OFFICER AT HARBOUR CENTRE, 10TH FLOOR, 25 HARBOUR ROAD, HONG KONG.

NOMINATIONS MAY BE MADE TO THE RETURNING OFFICER DURING OFFICE HOURS, MONDAY TO FRIDAY, UP TO AND INCLUDING SEPTEMBER 26.

- - - - 0 - - - -

SOUTHERN DB TO BEGIN CIVIC EDUCATION DRIVE  
\* \* \* \* \*

THE SOUTHERN DISTRICT BOARD WILL ANNOUNCE DETAILS OF ITS YEAR-LONG CIVIC EDUCATION CAMPAIGN AT A PRESS CONFERENCE TOMORROW (FRIDAY).

THE CAMPAIGN, TO BEGIN ON SATURDAY, SEPTEMBER 20, WILL BE IMPLEMENTED IN THREE PHASES. THE AIM IS TO ENCOURAGE RESIDENTS TO BECOME BETTER CITIZENS BY TAKING A GREATER INTEREST IN PUBLIC AFFAIRS AND PLAYING A MORE ACTIVE PART IN COMMUNITY ACTIVITIES.

THE DISTRICT BOARD'S COMMUNITY BUILDING COMMITTEE HAS ENDORSED THE ALLOCATION OF ABOUT \$60 000 TO IMPLEMENT THE FIRST PHASE OF THE CAMPAIGN, FROM SEPTEMBER TO NOVEMBER. IN THIS PHASE A VARIETY OF ACTIVITIES WILL BE ORGANISED TO SPREAD THE CIVIC EDUCATION MESSAGE.

AMONG THOSE ATTENDING THE PRESS CONFERENCE WILL BE THE COMMUNITY BUILDING COMMITTEE CHAIRMAN, MR PAUL YOUNG, ACTING SOUTHERN DISTRICT OFFICER, MRS ANGELA TSANG, AND ASSISTANT DISTRICT OFFICER, MISS OLIVIA NIP.

- - - - -

NOTE TO EDITORS:

YOU ARE INVITED TO COVER THE SOUTHERN DISTRICT BOARD'S PRESS CONFERENCE ON CIVIC EDUCATION TO BEGIN AT NOON TOMORROW IN THE SOUTHERN DISTRICT OFFICE CONFERENCE ROOM, NO. 7-11, NAM NING STREET, SECOND FLOOR, MEI FUNG COURT, ABERDEEN CENTRE, HONG KONG.

THERE WILL BE NO SIMULTANEOUS INTERPRETATION SERVICE.

- - - - 0 - - - -

/11 .....

THURSDAY, SEPTEMBER 11, 1986

- 11 -

TSUEN WAN COMMITTEE TO STUDY TRANSPORT PLAN  
\* \* \* \* \*

MEMBERS OF THE ENVIRONMENTAL AND TRANSPORT AFFAIRS COMMITTEE OF THE TSUEN WAN DISTRICT BOARD WILL DISCUSS A DRAFT DEVELOPMENT PROGRAMME ON PUBLIC TRANSPORT SERVICES AT A MEETING TOMORROW (FRIDAY).

THE PAPER WILL BE PRESENTED BY THE TRANSPORT DEPARTMENT. MEMBERS VIEWS ARE BEING SOUGHT ON THE DRAFT PROGRAMME FOR THE DISTRICT IN RELATION TO POPULATION CHANGES, A REVIEW ON CO-ORDINATION OF PUBLIC TRANSPORT, AND A STUDY OF CROSS-HARBOUR SERVICES.

A PROGRESS REPORT ON VARIOUS ITEMS LISTED AS MINOR ENVIRONMENTAL IMPROVEMENT PROJECTS WILL ALSO BE TABLED FOR CONSIDERATION. THE PROJECTS INCLUDE ROADSIDE PLANTING AND THE CONSTRUCTION OF A SITTING-OUT-AREA.

MEMBERS WILL BE BRIEFED ON PROGRESS MADE BY THE WORKING GROUP ON POLLUTION PROBLEMS IN TSUEN WAN.

THE AGENDA ALSO INCLUDES PAPERS ON MATTERS RELATING TO WATER SUPPLY FOR MA WAN AND FOR SQUATTER AREAS IN TSUEN WAN.

THE MEETING WILL BEGIN AT 2.30 PM IN THE MAIN CONFERENCE ROOM OF THE REGIONAL COUNCIL ON THE SECOND FLOOR OF TSUEN WAN STATION MULTI-STOREY CARPARK BUILDING, 174-208 CASTLE PEAK ROAD, TSUEN WAN.

-----

NOTE TO EDITORS:

YOU ARE INVITED TO COVER THE MEETING.

----- 0 -----

/12 .....

THURSDAY, SEPTEMBER 11, 1986

- 12 -

SECOND PHASE NEIGHBOURHOOD WATCH SCHEME LAUNCHING  
\* \* \* \* \*

WAN CHAI DISTRICT OFFICER, MR ROGER GARCIA, WILL OFFICIATE AT THE INAUGURATION CEREMONY OF THE DISTRICTS SECOND PHASE NEIGHBOURHOOD WATCH SCHEME AT 7.45 PM TOMORROW (FRIDAY) AT THE RUBY RESTAURANT, YEE WO STREET, CAUSEWAY BAY.

OTHER OFFICIATING GUESTS INCLUDE THE WAN CHAI POLICE DISTRICT COMMANDER, MR LAU TO-YEE; THE WAN CHAI POLICE COMMUNITY RELATIONS OFFICER, MR LAU KIN-YEUK; THE ASSISTANT DISTRICT OFFICER, MISS DONNA WONG; THE CHAIRMAN OF THE DISTRICT FIGHT CRIME COMMITTEE, MR CHENG HOK-YIN; THE WAN CHAI DISTRICT BOARD CHAIRMAN, MRS PEGGY LAM; AND THE FIVE CHAIRMEN OF THE DISTRICT'S AREA COMMITTEES.

-----

NOTE TO EDITORS:

YOU ARE INVITED TO COVER THE INAUGURATION CEREMONY OF THE WAN CHAI DISTRICT NEIGHBOURHOOD WATCH SCHEME AT 7.45 PM TOMORROW AT THE RUBY RESTAURANT.

----- 0 -----

47 TO GET AWARDS FOR SAVING LIVES  
\* \* \* \* \*

THE DIRECTOR OF AGRICULTURE AND FISHERIES, DR LAWRENCE LEE, WILL PRESENT THE RESCUE STAR TO 47 GOVERNMENT LIFE GUARDS AND PUBLIC-SPIRITED CITIZENS AT A CEREMONY TOMORROW (FRIDAY) FOR THEIR BRAVERY IN SAVING LIFE AT SWIMMING POOLS, AT SEA AND AT PUBLIC BEACHES.

AMONG THE RECIPIENTS ARE 25 LIFE GUARDS OF THE URBAN SERVICES AND REGIONAL SERVICES DEPARTMENTS, 10 MEMBERS OF THE HONG KONG LIFE GUARD CLUB AND 12 MEMBERS OF PUBLIC, SEVEN OF THEM FISHERMEN.

-----

NOTE TO EDITORS:

YOU ARE INVITED TO SEND A REPRESENTATIVE TO COVER THE PRESENTATION CEREMONY, TO BE HELD AT THE HONG KONG LIFE GUARD CLUB IN SOUTH BAY ROAD, REPULSE BAY, AT 2 PM TOMORROW.

----- 0 -----

THURSDAY, SEPTEMBER 11, 1986

- 13 -

STATUTORY HOLIDAY ON SEPTEMBER 19

\* \* \* \*

THE LABOUR DEPARTMENT TODAY (THURSDAY) REMINDED EMPLOYERS THAT THE DAY FOLLOWING THE MID-AUTUMN FESTIVAL - SEPTEMBER 19 - IS ONE OF THE 11 STATUTORY HOLIDAYS.

UNDER THE EMPLOYMENT ORDINANCE, ALL MANUAL EMPLOYEES AND THOSE NON-MANUAL EMPLOYEES EARNING NOT MORE THAN \$10 500 A MONTH ARE ENTITLED TO THE HOLIDAY AND MUST BE PAID FOR THE DAY OFF IF THEY HAVE WORKED CONTINUOUSLY FOR THREE MONTHS IMMEDIATELY PRECEDING THE STATUTORY HOLIDAY.

HOLIDAY PAY SHOULD BE EQUIVALENT TO AN EMPLOYEE'S EARNINGS ON A NORMAL WORKING DAY AND SHOULD INCLUDE BASIC WAGES AS WELL AS ALLOWANCES THAT CAN BE EXPRESSED IN MONEY TERMS SUCH AS MEALS AND COST OF LIVING ALLOWANCES.

+WHERE THE EARNINGS VARY FROM DAY TO DAY, HOLIDAY PAY SHOULD BE THE AVERAGE DAILY EARNINGS DURING EVERY COMPLETE WAGE PERIOD, WHICH COULD BE BETWEEN 28 DAYS TO 31 DAYS PRECEDING THE HOLIDAY,+ A LABOUR DEPARTMENT SPOKESMAN SAID.

+IF AN EMPLOYEE IS REQUIRED TO WORK ON A STATUTORY HOLIDAY, HE MUST BE GIVEN AN ALTERNATIVE DAY OFF WITHIN 60 DAYS BEFORE OR AFTER THAT DAY.+

ENQUIRIES ABOUT STATUTORY HOLIDAYS MAY BE MADE AT BRANCH OFFICES OF THE LABOUR RELATIONS SERVICE.

- - - - - 0 - - - - -

EASTERN GETS READY FOR FUN DAY

\* \* \* \* \*

AN EASTERN DISTRICT CIVIC FUN DAY WILL BE HELD ON SUNDAY (SEPTEMBER 14) AT VICTORIA PARK IN CAUSEWAY BAY. IT WILL BEGIN AT 2.30 PM.

THE FUN DAY IS JOINTLY ORGANISED BY THE EASTERN DISTRICT BOARD, EASTERN DISTRICT OFFICE AND THE URBAN COUNCIL. IT WILL FEATURE A TELEMATCH, 20 GAME STALLS AND A FUN FAIR FOR CHILDREN.

OVER 10 DISTRICT ORGANISATIONS, AREA COMMITTEES AND OUTSIDE BODIES WILL COMPETE IN FOUR TELEMATCH GAMES INCORPORATING THE MESSAGE OF COMMUNITY INVOLVEMENT AND ENVIRONMENTAL PROTECTION.

THE ORGANISING COMMITTEE HAS PREPARED 20 000 GIFTS TO BE DISTRIBUTED TO ALL THOSE WHO TRY THEIR SKILL AT GAME STALLS. THE GIFTS WILL BE GIVEN OUT ON THE BASIS OF POINTS SCORED.

THE FUN FAIR WILL INCLUDE AN AIR-INFLATED ELEPHANT PLAYHOUSE AND A HUGE PUBLICITY BALLOON.

/TO HELP .....

THURSDAY, SEPTEMBER 11, 1986

- 14 -

TO HELP ENHANCE CIVIC AWARENESS AND THE SPIRIT OF CIVIC EDUCATION, THE EASTERN DISTRICT BOARD WILL SET UP A PUBLIC ENQUIRIES COUNTER AT THE VENUE. THIS WILL BE MANNED BY BOARD MEMBERS TO EXPLAIN THEIR WORK TO THE PUBLIC.

THE FIRST RUNNER-UP IN THE MISS HONG KONG PAGEANT, MISS NG YUEN-FONG, AND THE SECOND RUNNER-UP, MISS NGAI SHUN-TUNG, WILL BE PRESENT TO HELP DISTRIBUTE VOTER REGISTRATION FORMS.

ADMISSION-GAMESTALL TICKETS FOR THE CIVIC FUN DAY ARE NOW AVAILABLE AT THE EASTERN DISTRICT OFFICE AND SUB-OFFICES.

- - - - 0 - - - -

#### STUDENTS TO HELP BEAUTIFY ENVIRONMENT

\* \* \* \*

FIVE HUNDRED TSUEN WAN STUDENTS WILL TAKE PART IN A SEED PLANTING AND ENVIRONMENTAL IMPROVEMENT EXERCISE AT THE TAI MO SHAN COUNTRY PARK ON SATURDAY (SEPTEMBER 13) AS PART OF THE DISTRICT'S SUMMER YOUTH PROGRAMME.

THE CHAIRMAN OF THE TSUEN WAN DISTRICT BOARD, MR CHAU HOW-CHEN, DISTRICT OFFICER MR ANGUS MIU, AND COUNTRY PARKS MANAGEMENT OFFICER OF THE AGRICULTURE AND FISHERIES DEPARTMENT, MR YEUNG KA-KUI, WILL OFFICIATE AT A CEREMONY TO BEGIN THE EXERCISE.

A CARNIVAL WILL LATER BE HELD AT THE SHA TSUI ROAD PLAYGROUND AND WILL INCLUDE GAME STALLS, A FLOWER DISPLAY AND PAINTING BY STUDENTS.

THE PAINTINGS WILL EVENTUALLY BE DISPLAYED AT THE PRINCESS ALEXANDRA COMMUNITY CENTRE.

- - - - -

#### NOTE TO EDITORS:

YOU ARE INVITED TO COVER THE SEED PLANTING AT TAI MO SHAN COUNTRY PARK AT 9.30 AM ON SATURDAY AND THE CARNIVAL TO BEGIN AT 2 PM AT THE SHA TSUI ROAD PLAYGROUND.

A COACH TO TAKE MEDIA REPRESENTATIVES TO TAI MO SHAN COUNTRY PARK WILL LEAVE THE CARPARK OF PRINCESS ALEXANDRA COMMUNITY CENTRE, AT 60 TAI HO ROAD, TSUEN WAN AT 9 AM.

- - - - 0 - - - -

THURSDAY, SEPTEMBER 11, 1986

- 15 -

LAND FOR SEAMEN'S TRAINING CENTRE BEING RECLAIMED  
\* \* \* \* \*

WORK HAS STARTED ON CONSTRUCTING A STORMWATER BOX CULVERT AND THE ASSOCIATED RECLAMATION AT THE SOUTH-EASTERN PORTION OF TAI LAM BAY IN THE NEW TERRITORIES.

UNDER A \$7.7 MILLION CONTRACT AWARDED BY THE CIVIL ENGINEERING SERVICES DEPARTMENT, A THREE-CELL STORMWATER BOX CULVERT, ABOUT 135 METRES IN LENGTH, WILL BE BUILT AND ABOUT HALF A HECTARE OF FORESHORE AND SEABED RECLAIMED.

WHEN COMPLETED IN SEPTEMBER NEXT YEAR, THE CULVERT AND RECLAMATION WILL FORM AN EXTENSION TO THE EXISTING RECLAMATION WHICH IS TO ACCOMMODATE THE VOCATIONAL TRAINING COUNCIL'S PERMANENT SEAMEN'S TRAINING CENTRE NOW UNDER CONSTRUCTION.

- - - - 0 - - - -

TRAFFIC CHANGES IN CENTRAL, WAN CHAI

\* \* \* \* \*

NO VEHICLE WILL BE ALLOWED TO TURN RIGHT FROM EASTBOUND CONNAUGHT ROAD CENTRAL INTO MORRISON STREET FROM 10 AM ON SUNDAY (SEPTEMBER 14) FOR ROAD WORKS IN CONNECTION WITH THE RECONSTRUCTION OF DES VOEUX ROAD CENTRAL.

THE MEASURE WILL BE IN FORCE FOR ABOUT THREE MONTHS.

MEANWHILE, THE SLIP ROAD LINKING VICTORIA PARK ROAD TO INNER GLOUCESTER ROAD WILL BE TEMPORARILY CLOSED TO TRAFFIC BETWEEN 8 AM AND 1 PM ON THE SAME DAY FOR THE INSTALLATION OF CABLES FOR AREA TRAFFIC CONTROL SYSTEM.

DURING THE CLOSURE, VEHICLES ON WESTBOUND VICTORIA PARK ROAD HEADING FOR INNER GLOUCESTER ROAD WILL BE DIVERTED TO USE THE ENTRANCE AT THE JUNCTION OF PERCIVAL STREET AND INNER GLOUCESTER ROAD.

- - - - 0 - - - -