



DAILY INFORMATION BULLETIN

ISSUED BY GOVERNMENT INFORMATION SERVICES
BEACONSFIELD HOUSE, HONG KONG. TEL.: 2842 8777

Friday, March 1, 1996

<u>Contents</u>	<u>Page No.</u>
Governor's transcript	1
More money to boost key services	2
Proposed estimates on education welcomed	6
Monetary statistics for January	6
Residential mortgage survey results for January	9
New Deputy Commissioner of Police appointed	14
Government vehicle maintenance service explained	15
Fire Services strikes to maintain high standard of services	16
Bus fare increases to take effect on Sunday	17
Voters urged to support Tuen Mun by-election	18
Three nominations for Eastern DB by-election	18
North-east Lantau Port Outline Zoning Plan amended	19
Tenders invited for mainslaying works in Sham Tseng	21
Road construction and improvement works in Tai Po Kau	21
Hong Kong Monetary Authority money market operations	22

Governor's transcript

* * * * *

Following is the transcript of the media session by the Governor, the Rt Hon Christopher Patten, after opening the renovated Queen Mary Hospital this (Friday) afternoon:

Question: About the Budget. Does the Government give a copy to the Chinese side?

Governor: I think you'd better ask the Financial Secretary any questions about the Budget. We'll be doing what we always do with budgets or have done in the last few years. And as you know, we've kept the Chinese side fully informed about the process of budget making this year. We have to go further in the next financial year quite properly because the next budget will cover nine months after the change of sovereignty.

Question: What about the expenditure ...? Social welfare expenditure will get the largest increment ...

Governor: I'm sure everybody in the community will be delighted by that because the community wants to see us providing good and comprehensive services for the needy, for the elderly, for the sake, for those with disabilities. So I'm sure that everybody will be delighted that welfare spending in real terms -- that is after inflation -- is going up in the coming year by almost 15 per cent.

Question: (on PM's visit)

Governor: My first priority will be to ensure that he is up to date about the challenges facing Hong Kong. Of course, I am in touch with him reasonably frequently, so what I say to him won't come as a great surprise. He wanted to come to Hong Kong for a couple of pretty obvious reasons. First of all, he's taking part at the moment in the Europe-Asia Summit Meeting in Bangkok and he believes as I do that Hong Kong is the major gateway to Asia for European Union countries, just as Britain in a sense is the main gateway to Europe for Asian countries. So Hong Kong has a really key part in the economic and trading relationship between Europe and Asia as it does between Asia and the United States. Secondly, I'm sure that he will want to make it clear to the people of Hong Kong, to legislators, to Executive Council members, to businessmen and to ordinary members of the public that he meets that Britain has a strong sense of commitment to Hong Kong not just up to 1997 but beyond that as well, morally and in other ways. And I'm sure he'll want to underline that.

Question: (on visa free access)

Governor: You all know what my position is on that. I've been pressing in public and in private for visa free access for SAR passport holders to the United Kingdom, just as I've been pressing the Chinese side to come forward as soon as possible with practical proposals for implementing Mr Qian Qichen's promise that everybody with permanent residence before 1997 will have it after 1997. We want to see proposals on that brought forward as soon as possible. Now the United Kingdom's response to my request and to the request of Legislative Councillors and Executive Councillors is for the Prime Minister and ... to set out. I very much hope that we'll be able to deal with that issue as soon as possible. I noticed that British ministers said we could expect a decision soon. I hope soon really means soon.

Question: Do you think Mr Major will announce the free entry ...?

Governor: I just answered that question.

Question: Back to the expenditure. The Chinese side has criticised the Government over the social welfare expenditure, but it still got the largest increase here. Will this lead to further criticism ...?

Governor: That shows that we have in Government people who listen to what the aspirations and ambitions and concerns of the ordinary people of Hong Kong are. It shows that the Government listens to the public. It shows that the Government listens to legislators and acts. It also shows that we have a strong economy which we are determined to keep strong. So we have to be prudent in all we do. While we've seen a substantial increase in spending on welfare, which will continue, overall we've seen a proper control of public spending so that it remains in relation to the economy overall at a fiscally responsible level. Thank you very much.

End

More money to boost key services

* * * * *

The draft estimates of expenditure for 1996-97, published today (Friday) together with the gazetting of the Appropriation Bill, propose significant increases in spending to improve services in areas where they are most needed.

Announcing this today, the Secretary for the Treasury, Mr K C Kwong emphasised that the draft estimates had been drawn up in accordance with the long established budgetary principle that over time, the growth in government expenditure should not exceed the trend growth rate of the economy.

"With a forecast trend economic growth rate of 5% a year in real terms, we are able once again to make significant improvements to services in the areas where they are most needed and to do so whilst still living within our means," he said.

"The estimates represent a further step towards achieving the improvement targets for the future set by the Governor in his policy addresses since 1992. They also provide the funds to meet the commitments published by policy secretaries in October last year," he said.

Total government expenditure, including expenditure by the funds, for the new financial year will rise to \$183.7 billion.

Mr Kwong explained that, of the total of \$183.7 billion, \$137.9 billion is for recurrent expenses on existing and new services and \$45.8 billion on capital projects.

"Our spending priorities have been decided after consultations held by the Financial Secretary with members of the Legislative Council and community groups during the past year," he said.

Some examples are :

On social welfare, the Government recurrent spending will grow to \$16.5 billion.

The Government will be providing :

* For the elderly :

an extra 1594 residential places
43 social centres
3 day care centres and
6 multi-service centres;

* For people with a disability :

an additional 384 residential places and
848 day places;

* For children with a disability :

an additional 537 pre-school places;

- * For children generally :
 - an extra 1400 day nursery places
 - 447 day creche places
 - 175 residential home places
 - 9 small group homes
 - 75 occasional child care places and
 - 40 foster care places;

- * For vulnerable children :
 - an extra 32 social workers for the child protection and custody services;

- * For youths at school :
 - 22 extra school social workers;

- * To strengthen family support :
 - an extra 68 family caseworkers
 - 11 clinical psychologists and
 - 12 home help teams;

- * A new counselling centre for psychotropic substance abusers

- * A comprehensive package of improvements to the comprehensive social security assistance scheme

On health, the Government recurrent spending will grow to \$22.6 billion.

New facilities will include :

- * 830 additional hospital beds

- * 8 new patients and carers resources centres

- * 3 new general out-patients clinics

- * 3 new elderly health centres

- * 2 new maternal and child health centres

- * a new health centre for women
- * a new renal dialysis centre
- * a new adolescent care centre
- * a new child assessment centre
- * a new school dental clinic
- * 4 additional specialist medical teams to provide medical and psychiatric care for 15,000 elderly patients a year
- * 2 additional rehabilitation co-ordination teams for the chronically ill
- * and extension of the student health service to secondary students

On education, the Government recurrent spending will grow to \$34.5 billion.

"This increased spending is despite a declining school age population (the number of children in the 6-14 age group is estimated to drop from 721,700 in 1995-96 to 712,200 in 1996-97).

"We will therefore be able to make further improvements in pupil teacher ratios and class sizes in primary schools, provide for 300 additional graduate teachers in primary schools and enhance support for Band 5 students," said Mr Kwong.

For a better environment, the Government recurrent spending will increase to \$2.6 billion.

"This will provide extra staff to implement air quality improvement programmes and additional resources for the proper disposal of waste."

For the fight against crime the Government will be providing :

- * 227 additional posts for the police to strengthen anti-triad work
- * 37 posts for customs and excise to tackle the illicit use of diesel oil and for enhancing the protection of intellectual property rights.

"These impressive improvements in services are all made possible by our continuing economic growth. Sustained economic growth will permit continued improvements in services in the future." he said.

End

Proposed estimates on education welcomed

* * * * *

In response to media enquiries, the Director of Education, Mrs Helen C P Lai Yu, today (Friday) welcomed the Government's proposal to allocate over \$19 billion to the Education Department for recurrent spending in the 1996-97 financial year.

She said: "This is an increase of more than \$727 million, or four per cent in real terms, over the 1995-96 revised estimates of \$18.38 billion. The proposed allocation is evidence of the priority Government continues to give to education services.

"It will enable us to fulfil the Governor's policy commitments announced in October 1995 and to initiate new improvement measures as well as enhance some existing services."

End

Monetary statistics for January

* * * * *

Total deposits rose moderately in January while total loans and advances fell, according to statistics published by the Hong Kong Monetary Authority today (Friday).

Table 1 summarises the figures for January and the comparisons with earlier months.

Deposits

Total deposits rose modestly by 0.2% in January, compared with the 1.6% increase in December. The growth was due to a 0.8% increase in Hong Kong dollar deposits, offsetting the 0.5% reduction in foreign currency deposits.

Within Hong Kong dollar deposits, demand deposits rose by 5.4% in January. Growth might have been boosted by the Chinese New Year payrolls and bonuses. Besides, refunds to unsuccessful subscribers of two new stock issues on January 31 might have also contributed to the increase in demand deposit growth.

Both Hong Kong dollar savings deposits and Hong Kong dollar time deposits decelerated to 0.2% and 0.5% growth during the month from 4.1% and 2.4% respectively in December.

Foreign currency swap deposits fell by a further 3.9% in January, cumulating in a 54% reduction since the peak of November 1994.

The foreign currency deposits fell by 0.5% and was attributable to a 1.9% decrease in US dollar deposits, which more than offset the 0.9% increase in non-US dollar foreign currency deposits during the month.

Loans and advances

Total loans and advances fell by 1.4% in January, after a 0.2% increase in December. This was mainly due to the fall of 3.6% in the loans for use outside Hong Kong (including those where the place of use is unknown). Loans for use in Hong Kong (including those to finance visible trade), on the other hand, rose by 1.6% in January.

Analysed by currency, Hong Kong dollar loans rose by 1.8% and foreign currency loans fell by 3% during the month.

As Hong Kong loans grew more rapidly than Hong Kong deposits, the Hong Kong dollar loan-to-deposit ratio rebounded to 106.7%, compared with 105.7% in December.

Money supply

In line with the increase in Hong Kong dollar demand deposits, HK\$M1 rose by 2.9% in January. HK\$M2 and HK\$M3 rose by 0.9% and 0.8% respectively.

TABLE 1 : MONETARY STATISTICS - JANUARY 1996^a

	(HK\$mn)			
	Jan 1996	Earlier months (% change to Jan 1996)		
		Dec 1995	Oct 1995	Jan 1995
<u>Money Supply</u>				
M1 - HK\$	176,481	171,424 (2.9)	171,127 (3.1)	177,110 (-0.4)
Foreign currency	19,351	18,227 (6.2)	16,457 (17.6)	16,095 (20.2)
Total	195,832	189,651 (3.3)	187,584 (4.4)	193,205 (1.4)
M2 - HK\$@	1,271,678	1,260,212 (0.9)	1,254,130 (1.4)	1,103,955 (15.2)
Foreign currency*	1,000,073	1,005,065 (-0.5)	978,009 (2.3)	882,945 (13.3)
Total	2,271,751	2,265,277 (0.3)	2,232,139 (1.8)	1,986,900 (14.3)
M3 - HK\$@	1,287,896	1,278,079 (0.8)	1,271,260 (1.3)	1,122,490 (14.7)
Foreign currency*	1,062,069	1,068,318 (-0.6)	1,038,934 (2.2)	943,652 (12.5)
Total	2,349,965	2,346,398 (0.2)	2,310,194 (1.7)	2,066,142 (13.7)
Notes and coins in circulation	82,403	81,667 (0.9)	78,597 (4.8)	96,966 (-15.0)
of which held by public	70,949	71,335 (-0.5)	69,176 (2.6)	83,950 (-15.5)
<u>Total Deposits</u>				
Total Demand deposits	124,883	118,316 (5.6)	118,408 (5.5)	109,255 (14.3)
Total Savings deposits	440,940	439,397 (0.4)	422,555 (4.4)	378,246 (16.6)
Total Time deposits with licensed banks	1,592,643	1,594,478 (-0.1)	1,580,246 (0.8)	1,378,997 (15.5)
Total Time deposits with restricted licence banks	37,119	38,125 (-2.6)	36,186 (2.6)	37,685 (-1.5)
Total Time deposits with deposit-taking companies	17,013	18,356 (-7.3)	18,636 (-8.7)	19,754 (-13.9)
HKS deposits@	1,180,868	1,171,418 (0.8)	1,167,617 (1.1)	1,010,113 (16.9)
Demand deposits	105,532	100,089 (5.4)	101,951 (3.5)	93,159 (13.3)
Savings deposits	301,200	300,697 (0.2)	292,768 (2.9)	261,509 (15.2)
Time deposits@	774,135	770,631 (0.5)	772,898 (0.2)	655,444 (18.1)
US\$ deposits*	513,709	523,731 (-1.9)	508,533 (1.0)	483,983 (6.1)
Other foreign currency deposits*	518,021	513,523 (0.9)	499,881 (3.6)	429,841 (20.5)
Foreign currency deposits*	1,031,730	1,037,255 (-0.5)	1,008,414 (2.3)	913,824 (12.9)
All deposits	2,212,597	2,208,673 (0.2)	2,176,031 (1.7)	1,923,937 (15.0)
Foreign currency swap deposits	47,849	49,808 (-3.9)	55,772 (-14.2)	88,886 (-46.2)
<u>Total Loans and advances</u>				
To finance H.K.'s visible trade	157,225	155,737 (1.0)	154,687 (1.6)	133,899 (17.4)
To finance merchandising trade not touching H.K.	19,106	17,732 (7.7)	17,830 (7.2)	14,934 (27.9)
Other loans for use in H.K.	1,419,941	1,398,137 (1.6)	1,376,341 (3.2)	1,276,243 (11.3)
Other loans for use outside H.K.	2,050,772	2,128,148 (-3.6)	2,107,243 (-2.7)	1,825,629 (12.3)
Other loans where the place of use is not known	38,225	38,106 (0.3)	37,387 (2.2)	42,050 (-9.1)
Loans in HK\$	1,259,605	1,237,641 (1.8)	1,224,203 (2.9)	1,127,900 (11.7)
Loans in foreign currencies	2,425,663	2,500,219 (-3.0)	2,469,284 (-1.8)	2,164,854 (12.0)
Total loans and advances	3,685,268	3,737,860 (-1.4)	3,693,487 (-0.2)	3,292,754 (11.9)

* Adjusted to exclude foreign currency swap deposits.

@ Adjusted to include foreign currency swap deposits.

Note : Data may not add up to total due to rounding.

End

Residential mortgage survey results for January

* * * * *

The growth of residential mortgage loans for the purchase of properties in Hong Kong slightly moderated in January, according to the results of the latest monthly survey conducted by the Hong Kong Monetary Authority (HKMA).

The latest figures show that the total amount of outstanding mortgage lending by the 33 institutions in the survey grew by 1.2% in January (1.4% in December 1995) to \$276 billion. The growth rate is slightly below the monthly average of 1.3% over the last 12 months.

"The growth rate in January reflects the modest trading activity in the property market during December 1995", said the Deputy Chief Executive (Banking) of HKMA, Mr David Carse.

The annualised rate of growth in lending over the last three months increased to 15.8% from 13.5% in the three-month period to December. The 12-month average of outstanding loans showed an annualised growth rate of 15.7%, compared with 15% in December 1995.

The amount of new loans approved but not yet drawn increased by \$0.5 billion (9.3%) to \$5.8 billion in January.

"These figures, coupled with the increased trading activity in both the primary and secondary property market in January, suggest that the growth rate of outstanding loans will be higher in February," said Mr Carse.

Lending for the purchase of properties in China increased by 1.3% to \$5.4 billion in January. Gross loans made in January increased both in number (to 293 from 131) and in amount (to \$147 million from \$118 million).

New loans approved in January also increased both in number (to 279 from 222) and in amount (to \$146 million from \$131 million).

**Residential Mortgage Loans in Hong Kong
Results of Survey for January 1996**

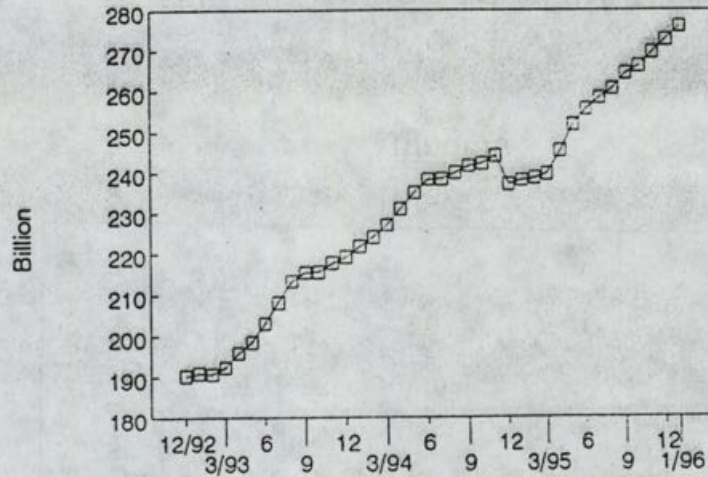
	<u>Jan</u> <u>1996</u> HK\$ Mn	<u>Dec</u> <u>1995</u> HK\$ Mn
<u>33 authorised institutions</u>		
1. <u>Outstanding lending</u>		
a. Amount	275,968	272,695
b. Monthly change	1.2%	1.4% **
c. Twelve-month change	15.7%	14.9% **
d. Average change (annualized)		
Latest three months	15.8%	13.5% **
Latest twelve months	15.7%	15.0% **
2. <u>Gross loans made during month</u>		
a. Amount	9,312	9,356
b. Number	7208	6957
3. <u>New loans approved during month</u>		
a. Amount	9,029	8,530
b. Number	7117	6189
4. <u>New loans approved during month but not yet drawn</u>		
a. Amount	5,818	5,323
b. Number	4462	3854

Note : ** Adjusted for the effect of sale and reclassification of residential mortgage loans by some institutions amounting to HK\$0.6 billion.

Chart A

**RESIDENTIAL MORTGAGE LOANS IN HONG KONG
(33 institutions)**

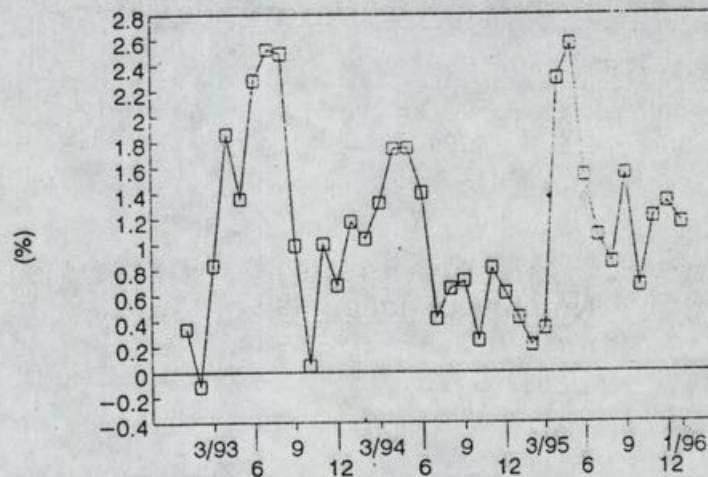
Outstanding balance at end of month



A1

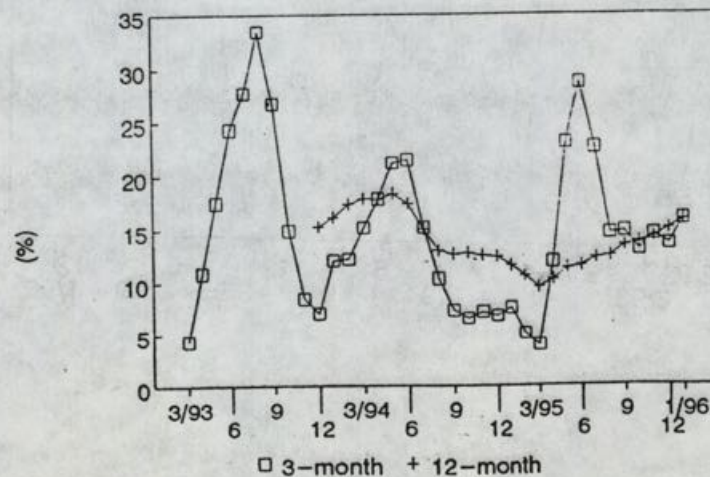
Remarks : The significant fall of outstanding balance in December 1994 was due to the effect of reclassification, securitization and sale of loans by some institutions.

Monthly growth rate



A2

3-month and 12-month moving average growth rate on annualised basis



A3

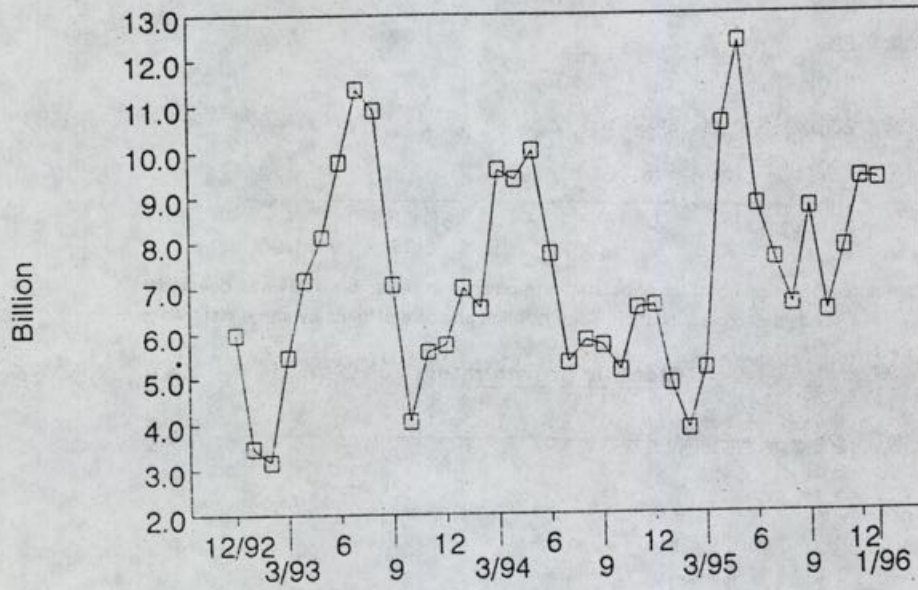
□ 3-month + 12-month

Chart B

RESIDENTIAL MORTGAGE LOANS IN HONG KONG
(33 institutions)

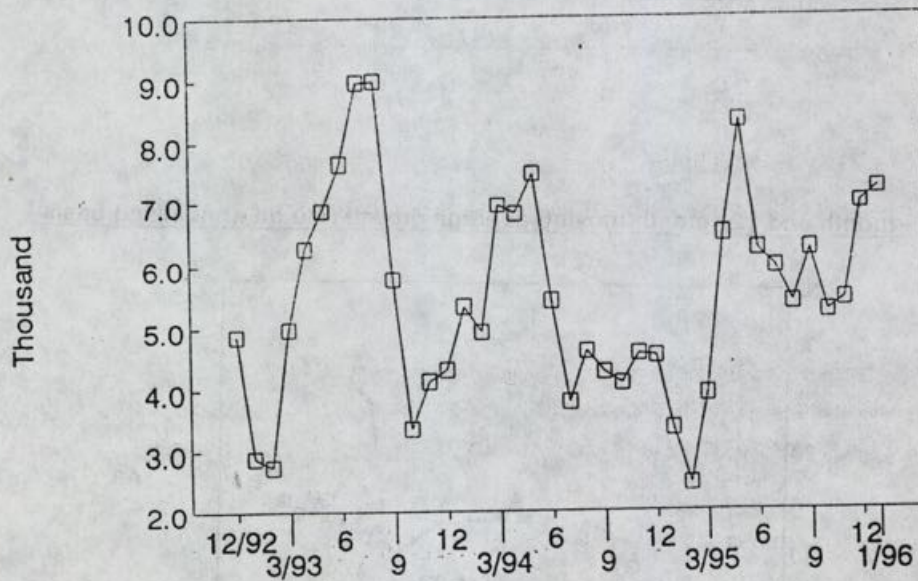
GROSS LOANS MADE DURING THE MONTH

Amount



B1

Number of accounts

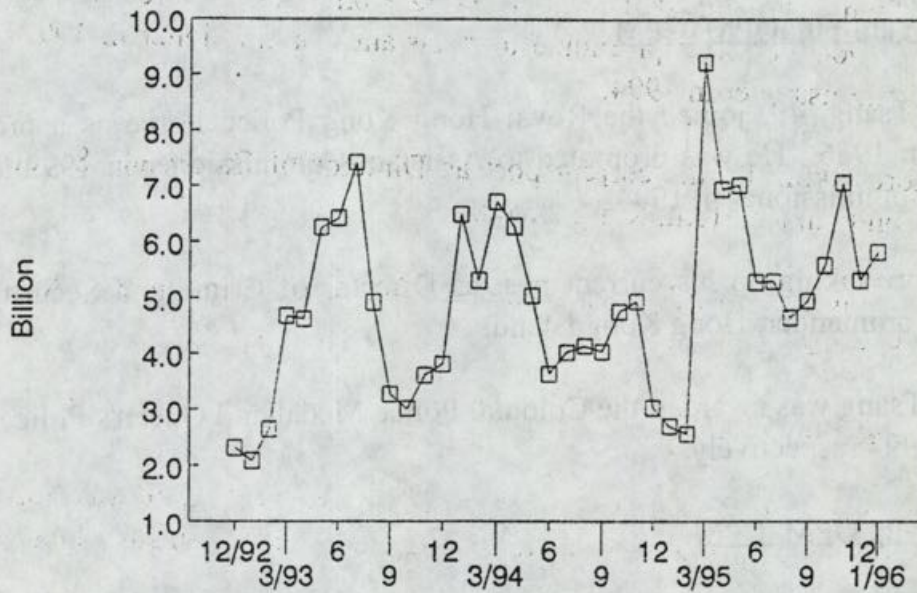


B2

RESIDENTIAL MORTGAGE LOANS IN HONG KONG
(33 institutions)

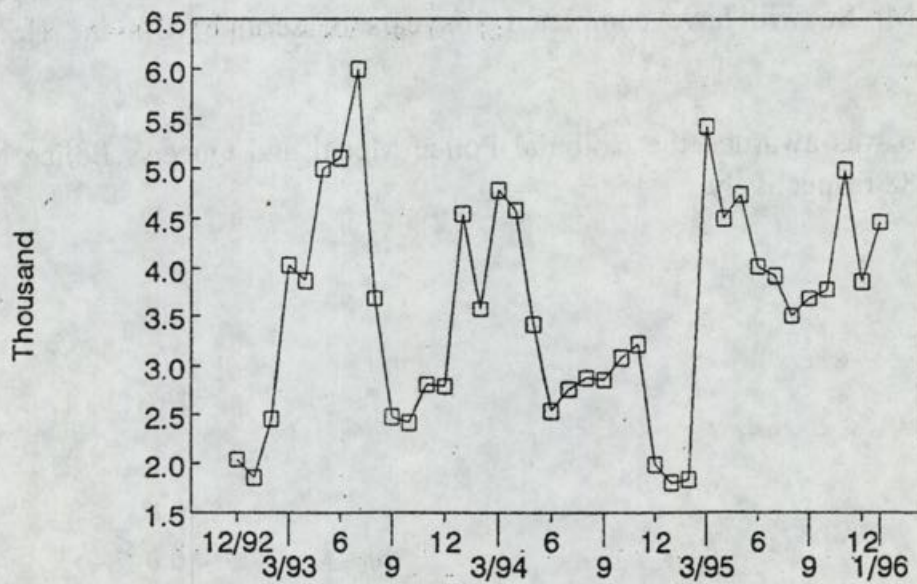
NEW LOANS APPROVED BUT NOT YET DRAWN

Amount



C1

Number of accounts



C2

New Deputy Commissioner of Police appointed

* * * * *

The Government announced today (Friday) that Mr Tsang Yam-pui will be promoted to the rank of Deputy Commissioner of Police with effect from May 1. He will replace Mr So Lai-yin who will begin his pre-retirement leave on the same day.

Following are biographical notes of Mr Tsang and Mr So:

Mr Tsang Yam-pui, QPM, CPM

Mr Tsang, 49, joined the Royal Hong Kong Police Force as a probationary Inspector in 1966. He was promoted to Assistant Commissioner in 1992 and Senior Assistant Commissioner in 1994.

Before taking up his current post as Director of Crime and Security, he was Regional Commander, Hong Kong Island.

Mr Tsang was awarded the Colonial Police Medal and Queen's Police Medal in 1987 and 1994 respectively.

Mr So Lai-yin, QPM, CPM

Mr So, 54, joined the Government in April, 1961, and was appointed as a probationary Inspector of the Royal Hong Kong Police Force in July the same year.

He was promoted to Assistant Commissioner in 1985, Senior Assistant Commissioner in 1991 and Deputy Commissioner in 1994. On his retirement at the age of 55, Mr So will have completed 36 years of service with the Hong Kong Government.

Mr So was awarded the Colonial Police Medal and Queen's Police Medal in 1981 and 1988 respectively.

End

Government vehicle maintenance service explained

* * * * *

The Government car fleet is heavily utilised and the mileage of the majority of the vehicles are much higher than the average mileage of a private saloon, with some of the vehicles having mileage four to six times more than that of an average private vehicle, a spokesman for the Electrical and Mechanical Services Department (EMSD) said today (Friday).

He said some vehicles were fitted with special equipment and accessories requiring more items to maintain, and thus more care and attention were needed. For specialist vehicles, technical complexity was even more profound.

The EMSD vehicle maintenance service has been established for over 40 years. The types of vehicles being maintained range from ambulances, police vehicles, road sweeper, refuse collection vehicles to common types of saloons, light buses and trucks.

Currently, the department is maintaining over 7,300 vehicles for the various government departments. Many of the special vehicles require special maintenance set ups and skills.

"It is our duty of care to maintain all vehicles in good physical conditions. All vehicle bodies and paint works are regularly carried out on need basis. Poor looking vehicles affect the image of the government departments," he said.

"As a government department, EMSD is conscious that it has to set an example on the engineering standards associated with its maintenance service. Accordingly, it has set itself a high quality standards in its vehicle maintenance services.

"All vehicles are serviced regularly at intervals recommended by the manufacturers. They are certified road worthy which in turn enhance drivers, passengers and pedestrians safety. Besides, it is our policy to use only genuine spare parts and consumable.

"Vehicles are maintained at good condition and are thus available for use whenever needed. This is particularly important for police cars, ambulance and public service vehicles."

He explained that all engines were tuned to optimise fuel combustion and to minimise smoke emission. This helps to conserve energy efficiency and reduce air pollution. All solid and fluid waste arising from vehicle services are disposed of properly to protect our environment.

Vehicle bodies are always maintained at good condition. One could hardly find a government vehicle with a loose bumper, dented body or with faded body paint running in the streets.

"As far as cost is concerned, we tend to compare ourselves with major servicing centres and from the data available to us, we consider ourselves broadly comparable with the charges of the private sector in terms of labour hourly rates.

"We have data to indicate that for comprehensive maintenance, i.e. all inclusive of preventive maintenance, corrective maintenance, fault attendance, vehicles towing, etc, our charges are comparable with the large servicing centres in the private sector," he said.

The spokesman added that refuse collection vehicles cost a lot more to maintain because its refuse compactor were heavily used, and the refuse collecting bins and parts were subject to heavy corrosion from refuse.

It also takes time to clean some of the refuse stuck in the machine parts which are difficult to access during normal cleaning. As a result, over 60% of the vehicle servicing charges of the Regional Council and the Urban Council are on the refuse collection vehicles.

End

Fire Services strikes to maintain high standard of services

* * * * *

The Fire Services Department enjoys an enviable reputation among fire brigades around the world because of the full support of all its staff with their hard work, dedication and professionalism, the Deputy Director of Fire Services, Mr John Tsang Kwong-yu, said today (Friday).

Speaking at the department's passing-out parade, Mr Tsang said fire services personnel were often admired for their devotion and bravery.

"We all know that higher and higher standard of government services is the essential demand of the modern society of Hong Kong," he said.

Noting that he had witnessed rapid development of the department in the past three decades, Mr Tsang said: "There is one thing that the department never changes - its aims to render the best possible standard of services."

Mr Tsang called upon the graduates on parade to commit themselves to upkeep the high standard maintained by their predecessors and to provide quality services to the community.

"During this transition period, I am pleased to commit myself, together with all of you new graduates, to offer our best endeavour for the prosperity and security of Hong Kong," Mr Tsang said.

In order to enhance the department's operational efficiency, Mr Tsang said five new fire stations, a fireboat station in Tuen Mun and the Lam Tin Ambulance Depot would be put in commission between 1996 and 1997.

On parade were 12 Probation Station Officers and 43 Firemen who had completed their respective basic training courses and who would soon be posted out to various fire stations to gain more field experience.

End

Bus fare increases to take effect on Sunday

* * * * *

Fare increases for Citybus and China Motor Bus (CMB) will take effect on Sunday (March 3).

A 9.5 per cent fare increase for Citybus's Hong Kong Island routes, and a 10 per cent fare increase for its cross harbour routes were approved by the Governor-in-Council on February 13. The increase is well below the anticipated inflation since Citybus's last fare adjustment.

Meanwhile, a 10.7 per cent fare increase will be levied on CMB's Hong Kong Island routes as well as a 10 per cent fare increase for its cross harbour routes.

The new fares will take effect on Sunday.

As most cross harbour routes are jointly operated by CMB, Citybus and KMB, it is necessary to maintain a common fare scale to avoid confusion to the commuters. For this reason, a 10 per cent fare increase will also be applied to the cross harbour routes operated by KMB.

CMB will also extend its elderly concessionary fare scheme to cover all its cross harbour routes when the new fares come into effect.

End

Voters urged to support Tuen Mun by-election

* * * * *

Tuen Mun district officer, Mr Patrick Chan, today (Friday) urged registered voters to cast their ballots in this Sunday's Tuen Mun District Board by-election for the Tin King constituency.

Mr Chan reminded the electorate that district boards are an important consultative body on government policies and had made important contributions to improving the living environment, public services, new town planning and facilities in the district.

"The district board is the avenue through which your valuable views on local matters are collected and reflected to the Government for discussion," he said.

The balloting will be held from 7.30 am to 10.30 pm.

A polling station will be set up at the Ho Sau Ki School, Ting King Estate, Tuen Mun. Voters are reminded to bring their identity cards and their poll cards.

Four candidates - Mr Lee Hung-sham, Ms Ho Hang-mui, Mr Tse Yee-fong and Mr Lee Yiu-hung - will be vying for the seat vacated by Mr Li Man-kwong.

The Tin King constituency, comprising mainly Ting King Estate, Siu Pong Court and Siu Kwai Court, has an electorate of 8,387.

Enquiries can be made to the Tuen Mun district office on 2465 1401.

End

Three nominations for Eastern DB by-election

* * * * *

A total of three nominations were received for the Eastern District Board by-election in respect of Kam Ping constituency to be held on March 31, after the two-week nomination period closes today (Friday).

All three nominations were received today.

Details of the nominations are as follows:

<u>Name/Age</u>	<u>Occupation</u>	<u>Tel</u>
Ms Leung Suk-ching (43)	Chinese Medical Practitioner	2898 3399 (day/night) 7116 8923 #2320
Mr Shek Kwei-chun (44)	Civil Engineer	2856 3331 (day) 2973 0233 (night)
Ms Tsang Angela (48)	Principal	2578 1745 (day) 2561 2296 (day) 7112 8909 (night) #1607

This by-election is the third of its kind scheduled in March.

The two other by-elections, for the Tin King and the Siu Hei constituencies of the Tuen Mun District Board, will be held on Sunday (March 3) and March 24 respectively.

End

North-east Lantau Port Outline Zoning Plan amended

* * * * *

The Town Planning Board today (Friday) announced amendments to the draft North-east Lantau Port Outline Zoning Plan.

The changes include minor textual amendments to the notes of the plan to rectify the discrepancies between the annotations for three 'Other Specified Uses' ('OU') zones and the description for the corresponding 'OU' zones in the notes, a spokesman for the Board said.

The amendments are as follows:

- (a) 'OU' zone annotated 'Container Back-up Uses' has been amended to 'OU' zone annotated 'Container Back-up Area';

- (b) 'OU' zone annotated 'River Trade Cargo Terminal and Back-up Uses' has been amended to 'OU' zone annotated 'River Trade Cargo Terminal and Back-up Area'; and
- (c) 'OU' zone annotated 'Boatyard, Marine-oriented Industrial Use and Marine Services Support Use' has been amended to 'Boatyard, Marine-oriented Industrial Use and Marine Services Support Area'.

The amendment plan (No S/I-NELP/2) is now available for public inspection until March 22 during normal office hours at:

- * Planning Department,
16th floor, Murray Building,
Garden Road, Central, Hong Kong;
- * Sai Kung and Islands District Planning Office,
10th floor, Leighton Centre,
77 Leighton Road, Causeway Bay, Hong Kong;
- * Islands District Office,
20th floor, Harbour Building,
38 Pier Road, Central, Hong Kong;
- * Islands District Office, Mui Wo Sub-office,
ground floor, Mui Wo Government Offices,
2 Ngan Kwong Wan Road,
Mui Wo, Lantau Island; and
- * Tsuen Wan District Office,
first floor, Tsuen Wan Station Multi-storey
Car Park Building,
174-208 Castle Peak Road,
Tsuen Wan, New Territories.

Any person affected by the amendment plan may submit written objections to the Secretary of the Town Planning Board, c/o Planning Department, 13th floor, Murray Building, Garden Road, Central, Hong Kong before March 22.

Copies of the draft plan are available for sale at the Survey and Mapping Office, Lands Department, 14th floor, Murray Building, Garden Road, Hong Kong and Kowloon Map Sales Office, ground floor, 382 Nathan Road, Kowloon.

End

Tenders invited for mainslaying works in Sham Tseng

* * * * *

The Water Supplies Department is inviting tenders for the laying of about 1,600 metres of 300 millimetres diameter ductile iron fresh water mains in Sham Tseng.

The contract will be the first to be awarded under the \$191.7 million Water Supply to Tsing Lung Tau and Sham Tseng Stage II project. When completed, the project will improve the water supply system in the areas to meet future demand.

Work will commence in June and scheduled for completion in 10 months.

Details of the tender notice are contained in the Government Gazette published today (Friday).

Tender forms and further particulars may be obtained from the Water Supplies Department, Immigration Tower, 44th floor, 7 Gloucester Road, Wan Chai, Hong Kong.

Tenders must be clearly marked and addressed to the Chairman of the Public Works Tender Board. They must be placed in the Public Works Tender Box at the lift lobby on 34th floor, Queensway Government Offices, 66 Queensway, Hong Kong before noon on Friday, March 22.

Late tenders will not be accepted.

End

Road construction and improvement works in Tai Po Kau

* * * * *

The prospective grantee of a land lot in Tai Po has proposed to construct an access road from Tai Po Road to the proposed residential development.

The proposed works will also include improvements to the section of Tai Po Road at Tai Po Kau and closure of some access roads affected.

During the construction period, necessary access will be maintained to minimise inconvenience to the public. A notice concerning the proposed works is contained in the Government Gazette published today (Friday).

A plan showing the proposed works can be seen at the Central and Western District Office, Public Enquiry Centre, Ground Floor, Harbour Building, 38 Pier Road, Central, Hong Kong and at the District Lands Office (Tai Po) and Tai Po District Office, on the first and second floor of Tai Po Government Offices Building, 1 Ting Kok Road, Tai Po, New Territories.

Any person objecting the proposed works must submit a written objection to the Secretary for Transport, Central Government Offices, East Wing, second floor, Lower Albert Road, Hong Kong not later than April 30, 1996.

End

Hong Kong Monetary Authority money market operations

* * * * *

	<u>\$ million</u>	<u>Time (hours)</u>	<u>Cumulative change (\$million)</u>
Opening balance in the account	2,050	0930	+752
Closing balance in the account	2,057	1000	+752
Change attributable to :		1100	+752
Money market activity	+757	1200	+762
LAF today	- 750	1500	+762
		1600	+757

LAF rate 4.00% bid/6.00% offer TWI 123.5 *+0.1* 01.03.96

Hong Kong Monetary Authority

EF bills		EF notes				
Terms	Yield	Term	Issue	Coupon	Price	Yield
1 week	4.72	2 years	2802	5.16	99.49	5.51
1 month	4.83	3 years	3901	5.57	99.60	5.80
3 months	4.98	5 years	5012	6.38	100.60	6.33
6 months	5.09	7 years	7302	6.02	96.71	6.72
12 months	5.17	5 years	M502	7.30	103.10	6.62

Total turnover of EF bills and notes - \$15,497 million

Closed March 1, 1996

End