

DIRECTOR OF MEDICAL AND HEALTH SERVICES

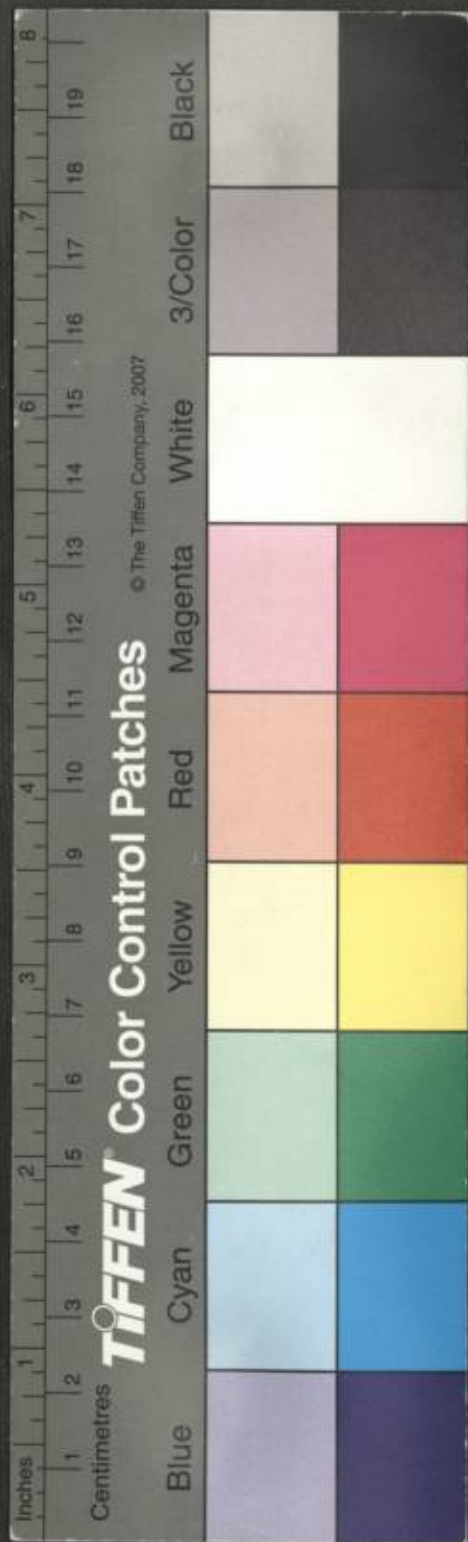


1980-1981 DEPARTMENTAL REPORT

歷史檔案館 PRO



000000000269282



HONG KONG
ANNUAL DEPARTMENTAL REPORT
BY THE
DIRECTOR OF
MEDICAL AND HEALTH SERVICES
K. L. THONG, C.B.E., J.P.,
M.B., B.S.(H.K.), F.F.C.M. (U.K.),
D.P.H. (Malaya)
FOR THE
FINANCIAL YEAR 1980-81 *

* 1st April 1980 - 31st March 1981

Public Records Office of Hong Kong
Reference Library

Ref. No.	
Acc. No.	
Date	

PLEASE RETURN TO
PUBLIC RECORDS OFFICE
OF HONG KONG
REFERENCE LIBRARY



C O N T E N T S

	<u>Page</u>
I Introduction	1
II Health of the Community	1 - 2
III Communicable Diseases	2 - 3
IV Health Services	4 - 9
V Hospital and Clinic Services	9 - 12
VI Special Services	13 - 14
VII Training Programmes	14 - 15
VIII Medical Development	15 - 16
IX Acknowledgement	16
X Maps	
XI Figures	
XII Statistical Tables	

Public Records Office of Hong Kong Reference Library	
Ref. No.	
Acc. No.	7139
Date	5.2.82.

PLEASE RETURN TO
PUBLIC RECORDS OFFICE
OF HONG KONG
REFERENCE LIBRARY

PLEASE RETURN TO
PUBLIC RECORDS OFFICE
OF HONG KONG
REFERENCE LIBRARY

I Introduction

The Medical & Health Department provides a whole range of medical and health services for the community of Hong Kong. Since 1977 the provision of services has been organised along regional lines. Each region is provided with comprehensive general and specialist facilities with the regional hospital as the centre supported by district hospitals, specialist and general clinics. Regionalisation aims at ensuring a better appreciation of the medical and health needs of each of the main population centres.

Demand for medical and health services has significantly risen during the past years with a sudden and rapid increase in population. This, coupled with the rising expectation of Hong Kong people for better and more social services, has brought great pressure to bear on the Medical and Health Department.

For the 1980/81 financial year, the Medical and Health Department's estimated expenditure was \$913.8 million. In addition, subventions totalling \$476.2 million were made to many non-government medical institutions and organisations. The capital expenditure on hospitals and other buildings, including furniture and equipment, was \$252.3 million.

II Health of the Community

Hong Kong people continued to enjoy good general health. Improvements in preventive, curative and rehabilitative health measures by the health authority on top of the improvements in the socio-economical condition have contributed to a low mortality rates and a decline in the incidence of major communicable diseases.

The estimated mid-year population of Hong Kong in 1980 was 5.04 million, an increase of 3.3% compared with the previous year. It is also estimated that about 25.6% were under 15 and 6.4% of the population were 65 and over.

The crude death rate was 5.16 per thousand population. Figure 2 shows the age specific death rates in Hong Kong for the year 1980. The five leading causes of death in Hong Kong were malignant neoplasms, heart diseases, cerebrovascular diseases, pneumonia and various injury and poisoning. Common forms of malignancies in Hong Kong were cancers of the lung, liver, nasopharynx, stomach and oesophagus.

/The total number

The total number of live births in the year was 85,406, a crude birth rate of 17.0 per thousand population compared to 16.8 per thousand in 1979. In the same year the infant mortality rate was 11.8 per thousand live births against 13.3 in 1979. The major causes of infant deaths recorded were anoxia, hypoxia and birth asphyxia (34%), congenital abnormalities (25%), pneumonia (11%) and immaturity (5.0%). Obstetric complications and birth trauma only responsible for less than 0.3% of the deaths.

Maternity mortality rate was 0.05 per thousand total births as compared with 0.08 in 1979. Of the four maternal deaths reported three were due to toxæmia of pregnancy and one case of postpartum haemorrhage.

III Communicable diseases

Because of stringent health measures, Hong Kong has been free from quarantinable diseases for many years and 1980 was no exception. However, rabies which had disappeared for 25 years struck the colony in October 1980 claiming two human lives and killing eleven dogs. The Agriculture and Fisheries Department took swift measures by stepping up stray dog patrols, setting up inoculation centres for dogs and prohibiting the free movement of dogs into and out of the infected area in the northern part of the New Territories. In the early part of 1981 the Director of Agriculture and Fisheries and the Director of Medical & Health Services visited the Health Authorities in Guangdong to discuss effective measures in controlling the spread of the disease around the border area.

A medical advisory committee on rabies was set up consisting of professional staff from both the University and the Department. Five special centres for the pre-exposure prophylaxis and post-exposure treatment of the disease were established to cope with the situation.

Many gastroenteritis diseases are still endemic in the region and they occur from time to time in minor outbreaks, e.g. amoebic dysentery, bacillary dysenteries and typhoid fever which claimed 13 lives in 1980. There were 102 outbreaks of acute food poisoning involving some 754 people. The common organisms responsible for these outbreaks included salmonella, E. coli, staphylococcus aureus and viboparahaemolyticus. Active case finding and contact tracing were carried out by the regional health staff. Their efforts have helped in limiting the spread of the disease within the community, but in many cases the primary sources of the infections could not be identified with precision and therefore total eradication was not possible.

The number of viral hepatitis cases notified in the year totalled 1,554 cases with 38 deaths compared with 964 cases in 1979. Seroepidemiological surveys confirmed that Hepatitis A and Hepatitis B are endemic in Hong Kong with a high prevalence of carriage of Hepatitis B surface antigen (HbsAg).

The year 1980 saw poliomyelitis, which has been non-existent for some 6 years, rearing its ugly head again in Hong Kong with two confirmed cases recorded. Two children developed the paralytic disease at the age of one and two. Both children had not completed the anti-polioimmunization schedule available in the MGH clinics. The reappearance of the disease serves as a reminder that the virulent polioviruses are still amongst our community and that the maintenance of a high level of personal immunity is still required.

During the year, a total of 82,525 doses of Type I vaccine and 147,786 doses of trivalent vaccine were given covering over some 97% and 89% respectively of the local young population under the age of one.

Chickenpox and measles are endemic in Hong Kong. In 1980, 1,669 cases of measles were notified with 5 reported deaths. Since the introduction of the measles vaccination in 1967, the incidence of the disease has reduced dramatically. The previous biennial epidemic cycle had been replaced by a new three-yearly cycle of comparatively lower magnitude. Measles vaccination campaign continues throughout the year to cover children from the age of one onward. A total of 59,023 doses of vaccine were given covering less than 50% of the target population. This is not entirely satisfactory as it is not adequate for preventing future outbreaks.

Rubella continued to occur in a sporadic fashion, with slight increase in incidence during the first five months of the year. A registry for congenital rubella was set up in the department and a total of 24 cases were recorded including four new cases in 1980.

Three types of influenza virus already prevalent in Hong Kong: A(H1 N1), A(H3 N2) and B were responsible for several outbreaks of sporadic cases, but a small influenza wave was observed between May and July when infection with all three virus types occurred concurrently.

A total of 29 cases of meningococcal meningitis was notified with three deaths. Follow-up activities revealed another 26 positive nasopharyngeal carriers amongst the contacts. The majority of these cases and contacts were residents in the Refugee Camps.

There has been an increase in the number of malaria cases in 1980. Most of the 49 cases were thoroughly investigated and found to be imported cases involving foreign visitors, tourists and refugees from the nearby Southeast Asia countries. The Medical & Health Department together with the New Territories Services Department have stepped up anti-malarial measures for controlling the vector and the disease.

Outbreaks of pediculosis infestations were reported amongst some urban and rural schools. Regional health staff initiated a succession of screening and treatment programme on request and over 3,000 children were treated. Health educational activities were directed towards emphasizing on the importance of maintaining an adequate standard of personal hygiene.

IV Health Services

Tuberculosis and the Chest Services

A total of 8,065 cases of tuberculosis were notified representing a rate of 160.1 per 100,000 population compared with 162.1 per 100,000 population for 1979. The tuberculosis death rate is 10.9 per 100,000 compared with 10.7 in 1979 or about 2.1% of the total registered deaths in the year.

Attendances at government chest clinic were 837,594 compared with 1.02 million in 1979, a decline of almost 18%. The BCG vaccination rate remains very high, covering over 98% of the newborns.

A registry for pneumoconiosis cases (Silicosis and Asbestosis) is kept by the pneumoconiosis clinic within the Government Chest Service. Medical staff in the chest services took an active part in the assessment of the degree of disability of the patients in the register for the purpose of compensation under the pneumoconiosis compensation ordinance 1980. By February 1981 phase I of the pneumoconiosis compensation scheme was completed and 1,328 cases were fully assessed and the results were forwarded to the Labour Department and subsequently the Pneumoconiosis Fund Board for compensation.

Family Health Service

The family health service provides a comprehensive health care programme for women of child bearing age and children from birth to five years of age.

The department runs a total of 38 maternal and child health centres, 23 of which are full time and the remainder operate on a part-time basis. Clinical assessment and health education plays a major role in the delivery of service. Home visits are carried out in cases of defaulters and those of high risk. Family planning services are available in 41 family planning centres. Post-natal check up service is also provided in these clinics.

During the year, about 90% of the newborns attended the Family Health Centres.

A comprehensive observation scheme was introduced in 1978 to screen, detect and assess early developmental anomalies amongst the infants from birth to the age of five and to initiate appropriate remedial therapy as early as possible.

Under the scheme, children with physical disease and disabilities are referred to the various specialist clinics for in-depth assessment and treatment. Other children with handicap are referred to the multidisciplinary child assessment centre for further observation and treatment.

The total attendance was 1.6 million, similar to that in 1979.

/Arran Street

Arran Street Multidisciplinary Child Assessment Centre

The emphasis here is on multidisciplinary approach and the working team consists of paediatricians, clinical psychologists, medical social workers, ophthalmologists, audiology technicians, speech therapists, physiotherapists, occupational therapists and nurses. Each individual team member provides a particular perspective to understand and deal with the child's problem.

The centre serves children from birth to 12 years old. It provides comprehensive physical, psychological and social assessment as well as therapy, parental counselling and appropriate placement of the child in the various institutions and centres run by the government and the voluntary agencies. The centre also works closely with the special child care centre of the Social Welfare Department and the Special Education Service centres of the Education Department.

In 1980, 757 cases were assessed and 2,861 case sessions were held.

The RDCC has recommended and the MDAC has endorsed that 6 more similar child assessment centres should be established on a regional basis. All these have been incorporated into the Medical Development Programme and should be completed by 1986.

Social Hygiene and Special Skin Service

Venereal Disease Service

The incidence of venereal disease recorded in 1980 was 5,513 compared with 5,388 in 1979. About 3.17% of these cases occurred in the teenage (under 15) group. The common sexually transmitted diseases were gonorrhoea (48%), syphilis (20%) and non-gonococcal urethritis (17%). The incidence of other sexually transmitted diseases e.g. chancroid and lympho-granuloma venereum remained low.

Ante-natal blood tests carried out routinely in all governmental and non-governmental ante-natal centres indicated an initial positive rate of 0.58% compared with 0.53% in the previous year. Of the 254 positive cases referred to the social hygiene clinics only 112 cases (44%) were found to be suffering from syphilis.

The health staff were involved in epidemiological activities such as contact tracing and follow-up of defaulters and those at risk of frequent exposure. Health education in social hygiene was also emphasised through frequent health talks and the issuing of pamphlets and posters to the public.

Leprosy Service

There has been a gradual fall in the incidence of leprosy during the past 2½ decades and this trend continued in 1980. The number of new cases treated in 1980 was 60 representing an incidence rate of 1.2 per 100,000 population. The ratio of male to female cases was 3.6 to 1 and about 43% of the cases were tuberculoid cases.

/All leprosy

All leprosy cases needing in-patient treatment are admitted into Lai Chi Kok Hospital and in 1980 there were 18 new admissions.

Dermatology Service

The total number of attendance in the skin clinics was 51,582 including 17,971 new cases. The six commonest skin diseases encountered were eczema, fungal infections, acne, scabies, lichen simplex and verruca. As in previous years there was a very low incidence of skin cancer.

Narcotics and Drugs Administration

The department runs a methadone maintenance as well as detoxification scheme for drug addicts. There are at present 20 methadone clinics over Hong Kong operating daily including Sundays and Public holidays. In August 1980, a central laboratory for urine testing was opened and operated by the Government Chemist, providing a fast and efficient analytical support to the methadone clinics. The average daily attendance of the services ranges from 6,500 to 7,000.

Occupational Health and Hygiene

The Occupational Health Division, formerly known as the Industrial Health Division of the Labour Department, provides an advisory service to government and industry on matters concerning the health of workers and the hygiene of the workplace and also performs a supervisory function in occupational health standards and practice. The aim of occupational health is to maintain and improve the physical and mental well-being of workers, protecting them against any hazard arising from their employment and helping in their adjustment to their tasks.

The need to develop services to cope with increase in population and industry in recent years has been recognised in the White Paper on "the Further Development of Medical and Health Services". A consultant in occupational health has now been appointed to head the division to plan and guide expansion of the division into a full occupational health service.

The division consists of medical and nursing sections responsible for the assessment of the worker and the effects of employment on health, and an occupational hygiene unit concerned with the recognition, evaluation and control of physical, chemical and biological hazards in the working environment. A team approach is usually adopted in practice.

A prime responsibility of the division is the investigation of notified occupational disease and potential hazards reported by the Factory Inspectorate to determine preventive action. In addition, planned surveys and monitoring of processes involving possible physical, chemical or biological hazards are conducted (e.g. cotton dust in the textile industry, chromium plating, use of manganese etc.). The medical examination of personnel exposed to ionizing radiation and government divers and compressed air workers is another on-going activity aimed at ensuring that the worker is fit for his task and that the work is not adversely affecting his health.

The Occupational Health Officers and Health Visitors and Nurses of the division are also involved in the assessment and rehabilitation of injured workers and staffing the medical boards required to implement the Employees' Compensation Ordinance and also deal similarly with cases of silicosis under the Pneumoconiosis (Compensation) Ordinance.

The laboratory of the Occupational Health Division carries out analytical procedures on biological samples from workers' urine, blood, etc. and the working environment e.g. concentration of silica. It also assists in analysis required by the general air pollution monitoring programme in Hong Kong.

In 1980, there were 328 cases of decompression sickness, 13 cases of contact dermatitis, 7 cases of lead poisoning and 1 case of poisoning by organic chemical notified. Among the non-notifiable occupational diseases, 205 cases of silicosis, 4 cases of gas poisoning, 3 cases of arc eye and 1 case each of asbestosis, toluene diisocyanate induced asthma and resin induced pharyngitis were recorded.

737 field surveys and 8,102 laboratory analyses were conducted, representing respectively a decrease of 30% and an increase of 20% as compared with those of 1979.

There were 89,844 occupational injuries reported. Of these, 70,386 non-fatal and 235 fatal cases were processed under the Employees' Compensation Ordinance. In connection with workmen's compensation claims, 480 and 23,748 cases were assessed by industrial health officers and medical assessment boards respectively.

Health Education

The Central Health Education Unit provides professional advice on health education, and serves as a resource unit to give technical aids and information. It plans, co-ordinates and develops activities within the department and with other organisations.

The unit works to a Health Education Co-ordinating Committee set up in the Department to advise on programmes of activities and decide on priorities. The committee also provides general guidance and assistance to the Unit on the development and implementation of health education programmes.

In the early part of the year the unit continued to stage a Family Health Campaign with major exhibitions in City Hall, district exhibitions in Tsuen Wan and Kwun Tong. A total attendance of over 50,000 was recorded. An anti-smoking campaign was held in association with the Hong Kong Cardiological Society and the Hong Kong Heart Foundation Ltd. The theme of the exhibition was "Smoking or Health, the choice is yours". Emphasis was placed on the education of the public through the mass media and posters. The Campaign was directed towards the smokers as well as the non-smokers with the aim of creating a non-smoking norm. The message on the health hazards of smoking was further integrated into all the other health educational programmes.

In the later part of the year activities were centred around an anti-cancer campaign organised jointly with the Hong Kong Anti-Cancer Association and the Stoma Association of Hong Kong. The response was encouraging and over 65,000 attended the 3-day exhibition in City Hall and a further 15,000 people attended the Tsuen Wan and Yuen Long Exhibition.

The Central Health Education Unit has further expanded and developed its resource and supply service. Demand for the service has increased tremendously with the wider circulation of the resource catalogue. This offers an opportunity for voluntary organisations, schools, interesting departments and units within the Medical & Health Department to borrow and utilise films, slides, tapes or obtain printed material for their own health education activities.

Dental Service

The Government Dental Service provides dental care for all monthly-paid Government servants and their dependants as well as simple dental treatment for the inmate of penal institutions and specialist treatment for patients in Government hospitals. Emergency treatment is also provided for the public in a number of clinics. A school dental care service based at MacLehose Dental Centre was introduced in September to provide regular dental health care to school children who join the scheme and at the same time promote dental hygiene amongst the school population. The centre incorporates a training school for dental therapists and hygienists and a school dental clinic. Six more school dental clinics are being planned on a regional basis.

In 1980, there were 344,025 attendances, and 78,771 persons were given dental checks and treatment.

Training in dentistry is now available in Hong Kong in the Prince Philip Dental Hospital which took in its first batch of 60 students in September 1980 and it is expected that they will graduate by the year 1985 to serve the local community.

Port Health

The port health authority enforces health controls at the Hong Kong International Airport and in the territory's water, to prevent the introduction of quarantinable diseases and to carry out other health measures required under the International Health Regulations. The health staff regularly check the food and water supply of air-food-catering service inside the Airport to ensure that they are clean and safe for consumption.

The service provides facilities for vaccination and the issuing of international vaccination certificates. It also inspects and supervises the eradication of rats on board the vessels.

On the disbandment of the Fumigation Bureau on 1.8.1980, five commercial firms were approved to provide fumigation service to ships. In addition, the staff of the Port Health Office also carried out disinfection of junks and ships which carried Vietnamese refugees at Western Quarantine Anchorage.

The medical staff on duty provides medical assistance to ships in the harbour, transmits medical advice to ships at sea, operates a 24 hour health clearance service for all incoming vessels and grants radio pratique to ships from "clean" ports.

Despite the strain placed on the service since 1979 by the inflow of boat refugees from Vietnam, Hong Kong remained free of all major quarantinable diseases.

Up to date Epidemiological information is exchanged regularly with the World Health Organisation in Geneva and its Western Pacific Regional Office in Manila and with neighbouring countries.

In 1980, 3,696 ships arriving in Hong Kong were cleared. The number of vaccinations given at port health inoculation centres totalled 27,615.

School Medical Service

The School Medical Service is operated by the School Medical Board which is an independent body. Participation is voluntary and for a token fee of \$5 a year, a participant can receive free medical attention from any one of the practitioner of their choice. On 31st March 1981 a total of 207,508 pupils from 801 schools participate in the medical scheme. The government contributes \$50 a year for each pupil enrolled in the scheme and also bears the administrative cost of running the scheme.

V Hospital and Clinic Services

The provision of hospital and clinic services is organised on a regional basis. Regionalisation ensures that the needs of each region is better assessed and that performance is better monitored. The occupancy rate for beds in regional hospitals has been constantly high. Attendances at casualty departments have also increased. All these reflect the growing demand for services as a result of the rapidly increasing population.

District hospitals provide basic hospital services in support of regional hospitals. Utilization of these hospitals has been improved with an average bed occupancy rate of 80.2%.

As at 31.12.1980, there were a total of 20,806 beds in 44 hospitals (excluding those maintained by the armed forces), 18 prison hospitals/treatment centres, 21 government clinics/maternity homes and 8 private nursing and maternity homes.

Hospital services are supported by specialist clinics which provide out-patient specialist services and general clinics which provide out-patient general health services. Specialist clinic services are available in every region except East NT which will be served by the Prince of Wales Hospital and Polyclinic when it is completed in 1982. 53 general clinics are located all over the territory.

Attendances at these clinics remain constantly high (general out-patient : 4.34 million, specialist : 8.17 million). Evening, Sunday/public holiday sessions are available at some clinics where required.

Ophthalmic Services

The Unit runs two main full time out-patient specialist eye centres. In addition, mobile ophthalmic teams are sent around to operate other regional clinics. A total of 221,348 attendances were recorded on a sessional basis in 1980. The Unit is also providing a specialist Casualty service in the major regional hospitals on a call basis. There are a total of 78 ophthalmic beds in both regional and district hospitals. Mobile ophthalmic teams visit the hospitals on a sessional basis to perform surgery and to deal with cases referred from other clinical units. In 1980 a total of 1,654 operations were performed in the hospitals and a further 2,598 operations were performed in the out-patient clinics. 11 corneal transplantations were done but only two transplantations were from local donor tissues. The number of persons first registered as blind were 596. The pattern of causes of blindness has remained unchanged and is observed to be mainly degenerative in nature occurring both in the senile and inborn group.

Ear, Nose and Throat Services

The ENT Unit comprises of two in-patient divisions with 34 beds based in Queen Mary Hospital and Queen Elizabeth Hospital. The total number of in-patient treated in 1980/81 was 4,874 with 1,877 major operations performed. The Unit also runs 11 full time and part time clinics in urban and rural area. In 1980/81 total attendances were 66,630. Minor surgeries were also performed in out-patient clinics. Speech therapy services were available for those who have developed speech difficulties as a result of recent diseases or surgery. There are 3 speech therapists in the unit and over the year a total of 6,420 assessment and treatment was performed.

Mental Health Service

The mental health service is geared towards a multi-disciplinary approach using medical, paramedical and other professional staff including psychiatric doctors, nurses, occupational therapists, clinical psychologists and medical social workers.

Until recently, Castle Peak Hospital had been the only Mental Institution in Hong Kong with its bed state progressively increased from the original 1,500 to 1,900 over the years. With the opening in 1981 of the new 1,300-bed Kwai Chung Hospital the overcrowded conditions in Castle Peak Hospital have been considerably relieved. The new hospital incorporates a variety of new specialist functions such the provision of child psychiatric wards, psychogeriatric wards and the establishment of a small core of psychiatric community nursing service in the later part of 1981.

/In 1980,

In 1980, there were 5,284 admissions to the mental hospitals, 647 to the various day hospitals and 164,130 attendances at the out-patient psychiatric centres. Medical staff were hard pressed by the increasing number of medical boards, and of referrals from courts, probation officers and police as well as the newly established Social Security Appeal Boards and the Compensation Boards for assessing emotional damage of sexual offence and other violent crimes. Clinical psychologists of the Mental Health Services conducted a total of 3,246 interviews which entailed assessment and therapeutic function. Continuing efforts are being directed towards the re-integration of the mentally ill back into the community.

The Psychiatric Unit at Kowloon Hospital, United Christian Hospital and the University Psychiatric Unit at Queen Mary Hospital also provide comprehensive psychiatric service in a general hospital setting. Having regard to the modern, universal trend in hospital development, future psychiatric units will be incorporated in general hospitals along with other specialised treatment unit. Convalescent/infirmity type of residential psychiatric care was provided in the Lai Chi Kok Hospital.

Supplementing the hospital facilities are five major day centres - The Hong Kong Psychiatric Centre, the Psychiatric Unit at Kowloon Hospital, the Yau Ma Tei Psychiatric Centre, the Chai Wan Psychiatric Centre and the South Kwai Chung Psychiatric Centre. They provide a range of services : day hospital, out-patient treatment, assessments and analytical, occupational, social and recreational therapy services.

Severely mentally-handicapped patients are cared for at the 200-bed Siu Lam Hospital. The Caritas Medical Centre also provide 300 places for this category of patients. The Government plans to expand facilities for the mentally ill by providing a further 1,700 psychiatric hospital beds by the end of the decade. In addition, six psychiatric out-patient clinics and 300 day centre places will be made available in the next six or seven years.

Medical Social Service

A Medical Social Unit is attached to each of the regional hospitals and clinics. There is also a special section serving specialist units such as Mental Health Services, Chest Services, Special Skin Services and the Narcotics and drug administration. The number of cases handled in 1980 was 72,699.

Medical social workers help patients and their families to cope with or solve their personal and social problems which often adversely affect their illness or disabilities. They interview patients or their family members at the hospitals or clinics or visit their homes. They also make full use of the facilities and services provided by government or other social welfare agencies, (e.g. public assistance, compassionate rehousing, vocational training, job placement services, child care centres, sheltered workshops etc.) in order that the sick or disabled can obtain a speedy recovery.

/Physiotherapy

Physiotherapy

The physiotherapy services are required for the treatment of patients in acute and convalescent hospitals, in the maternity and obstetric wards, in the out-patient clinics and also in the medical rehabilitation centres. They are also involved in the rehabilitation of the physically and mentally handicapped in geriatric and mentally ill hospitals and day centres and other special centres for children and adults.

In 1980 a total of 144,622 patients were treated and 1,120,550 attendances were recorded. With the increasing demand and rapid expansion of the service there is a general shortage of trained personnel. The first batch of 40 qualified physiotherapists trained in the Polytechnic will complete the course in July 1981, ready to serve the community. In spite of this, short term recruitment from overseas is still being carried out to meet the present shortfall. There is a need to recruit people with wider experience and training in special fields.

Occupational Therapy

Occupational therapy is a form of treatment for people who are physically and/or mentally ill and disabled. Under the instruction of qualified therapists, patients are involved in activities designed to restore wholly or partly their bodily functions so that they can be fitted into the working environment and become productive again.

In 1980, 14,182 patients were treated with a total attendance of 698,999. A local 3-year training course for occupational therapists has been established at the Polytechnic and the first batch of 40 qualified occupational therapists will be coming out by July 1981. Direct recruitment from overseas for experienced occupational therapist is still continuing but the result has not been very encouraging.

Community Nursing Service

The community nursing service has become part of the government medical and health service since 1979. Throughout the year there was a rapid expansion of this type of service in both the government and subvented sector. A joint consultative committee has been set up to assess the effectiveness of the service, to evaluate the progress of the scheme and to establish a uniformity of standards. At present there are 33 centres covering the whole of Hong Kong Island, Kowloon and part of the New Territories. Special subcentres were set up in all the major hospitals to facilitate the provision of effective service. The service aims at extending care to patients discharged from hospitals after acute illness, and providing continuing care for the sick, the disabled and the elderly in their homes, thus relieving the much needed hospital beds.

During 1980/81, 8,743 patients were looked after by 130 community nurses and over 123,298 home visits were made.

/VI

VI Special Services

Pathology

The Institute of Pathology runs clinical pathology and public health laboratory services for the government and a consultant service for the government assisted sector. It also administers mortuaries and blood banks. In 1980 a total of 5.88 million examinations were undertaken by the Institute representing an increase of 3% over the previous year.

69,415 units of blood were received by the blood banks. 6.13% of the donated blood were found to be positive for Hepatitis B surface antigen.

The institute also produces and issues some type of vaccine to various hospitals and clinics including private practitioners. A total of 417,220 ml. of vaccine were produced locally last year.

Forensic Pathology

The forensic pathology service with its newly established forensic laboratory works closely with the Royal Hong Kong Police Force on the medical aspect of criminology and other medico-legal work. The work of the service includes investigations in all homicides, suspected homicides, deaths while in custody, traffic 'hit and run' and other Coroner's cases. The professional staff dealt with a total of 537 autopsies, 899 clinical examinations and blood groupings and 2,009 laboratory examinations in 1980.

Radiology and Oncology

The radio-diagnostic division provides x-ray diagnostic services to hospitals, polyclinics, clinics and mobile radiography stations. 877,369 examinations were performed in 1980, an increase of 3% over last year's figure.

The radiotherapy division is based in both Queen Elizabeth Hospital and Queen Mary Hospital and treats about 90% of patients requiring the service. The division in addition offers a chemotherapy service and also operates a Cancer Registry covering the whole of Hong Kong. A total of 5,057 patients were treated in the unit during the year.

The radiation physics division is responsible for the operation of the Radioisotope laboratories, the mould laboratories, the Radiological workshop, the Photographic Section and the Radiation Health Unit. The latter undertakes regular inspection visits to medical, commercial and industrial premises to monitor the working conditions of radiation workers and to ensure that radioactive equipments and irradiating apparatus are well maintained and the handling of radioactive substances are safely controlled in accordance with the Radiation Ordinance and Regulations.

/Anaesthesia

Anaesthesia

The anaesthetic service carried out 247 operating sessions a week and 9 emergency operating theatres on a 24 hour basis. 60,902 operations were performed under anaesthesia in 1980, an increase of 2% compared with 1979. The staff in Anaesthesia Unit of Princess Margaret Hospital continued to provide anaesthetic service to other district hospitals and clinical units in the New Territories on a part time basis.

VII Training Programmes

Medical Staff

Graduates of the Faculty of Medicine at the University of Hong Kong have been recognised by the General Medical Council of Great Britain since 1911. Both the Government and the University maintain a comprehensive post graduate training programme. Opportunities are available for doctors to sit for higher professional examinations in Hong Kong by dual arrangement with various organisations in U.K. and Australia. Higher professional examinations were held here by the Royal College of Physician, the Royal College of Obstetrician and Gynaecologists, the Royal Australian College of Surgeons and the Royal Australian College of Radiologists. In 1980/81 over 100 doctors were sent overseas for postgraduate medical training on government or other scholarships.

The University of Hong Kong is now producing about 150 medical doctors a year. The second medical school, in the Chinese University of Hong Kong, will start its first intake of 60 students in September 1981 who will be qualified by 1985.

Dental Staff

Training in dentistry is now available in Hong Kong in the Prince Philip Dental Hospital which made its first intake of 60 students in September 1980 and it is expected that they shall graduate by the year 1985 to serve the local community. Dental therapists and hygienists are being trained in the MacLehose Dental Centre and they are providing a reasonable standard of regular dental health care to school children who have joined the school dental scheme.

Nursing Staff

There are at present three government hospital schools of nursing for general registered nurses. A fourth school will be established in the New Prince of Wales Hospital in 1982, and another school in the future Tuen Mun Hospital in 1985. Other approved nurse training schools are attached to government assisted or private hospitals.

/Two psychiatric

Two psychiatric nurse training schools are established in Castle Peak Hospital and the new Kwai Chung Hospital and the former also offers training for enrolled nurses. In addition there is an enrolled nurse training school in Kowloon Hospital with an output of about 120 nurses per year. Another similar enrolled nurse training school has been planned for Queen Elizabeth Hospital.

1,869 general and 208 psychiatric student nurses are undergoing a 3-year training course leading to registration with the Nursing Board of Hong Kong. 656 general and 94 psychiatric pupil nurses are undergoing a 2-year training course leading to enrollment with the Nursing Board of Hong Kong.

The Government also runs post graduate in-service training courses for both the registered and enrolled nurses in midwifery, health nursing and community nursing. In 1980, 26 nurses were sent overseas for training in special courses in health education, occupational health and psychiatric nursing.

Para-Medical Staff

An institute of Medical and Health Care at the Hong Kong Polytechnic provides training for various grades of paramedical staff including radiographers, physiotherapists, occupational therapists, medical laboratory technicians and dental laboratory technicians. In-service training and post qualification training courses are also available for those serving in the civil services.

VIII Medical Development

A White Paper titled "The Further Development of Medical and Health Services in Hong Kong" published in 1974 provides a blue print for the future development of the services in the next 10 years. Development is reviewed annually by the Medical Development Advisory Committee (MDAC). A 10-year Medical Development programme published in 1979 contained proposals for the further development of medical and health services over the next decade.

Further expansion of the medical development programme includes the establishment of 5 major hospitals of over 1,000 beds each and more than 20 clinics and polyclinics in the new towns and population centres.

The Prince of Wales Hospital and Polyclinic is scheduled to open in 1983 serving the East NT Region. It will also be the teaching hospital for the medical school of the Chinese University of Hong Kong. Another major hospital of about 1,400 beds is being planned for Tuen Mun New Town serving the West NT Region. Other major hospitals are planned for East Kowloon, Tai Po and Shau Kei Wan.

/Specialist clinics

Specialist clinics and polyclinics are also planned in conjunction with each future major hospital : at Shatin, East Kowloon, Tuen Mun, Tai Po, and Shau Kei Wan. The Violet Peel Polyclinic will be reprovisioned. For general clinics, it is planned that future clinics will be located near population centres, especially in the housing estates. These future clinics will either be standard urban clinics, like Lek Yuen Health Centre, or estate clinics, like the one in Cheung Hong Estate on Tsing Yi Island.

IX Acknowledgement

I wish to pay tribute to all the staff who have contributed to the efficient and effective functioning of the Department in the year under review. Though there had been pressure and difficulties, all performed their duties with devotion and dedication. I am most grateful for their unfailing support.

The Department acknowledges with thanks the assistance and cooperation given by other government departments, voluntary agencies, the press, the radio and television networks.

Many public spirited persons have devoted their time and energy to serve on statutory boards, advisory committees, working parties and in voluntary agencies dealing with the many aspects of medical and health services in Hong Kong. Their contributions are much appreciated.

Finally, I would like to record my appreciation for the contributions of private individuals as well as local and overseas organisations who have assisted the Department in providing facilities for those in need of medical care. It is hoped that they will continue to contribute to the Medical Development Programme in the challenging years ahead. With such sound support I am confident that the Department will continue to provide a good service.

(K.L. Thong)
Director of Medical & Health Services

MAPS

A

HONG KONG ISLANDGOVERNMENT HOSPITALS

- a. Queen Mary Hospital (a regional hospital for Hong Kong Island) A1
- b. Tang Shiu Kin Hospital (a general hospital with casualty department, out-patient facilities) A1
- c. Tsan Yuk Hospital (a maternity hospital) A1

GOVERNMENT-ASSISTED HOSPITALS

- d. Alice Ho Miu Ling Nethersole Hospital (a general hospital with general out-patient facilities) A1
- e. Cheshire Home (a convalescent home) B2
- f. Duchess of Kent Children's Orthopaedic Hospital and Convalescent Home A1
- g. Freni Memorial Convalescent Home A1
- h. Grantham Hospital (a tuberculosis and cardiothoracic surgery hospital) A2
- i. Nam Long Hospital (a cancer hospital) A2
- j. Ruttonjee Sanatorium (a tuberculosis hospital) A1
- k. Sandy Bay Convalescent Hospital A1
- l. Tung Wah Hospital (a general hospital with general out-patient facilities) A1
- m. Tung Wah Eastern Hospital (a general hospital with general out-patient facilities) B1

PRIVATE HOSPITALS

- n. Canossa Hospital (a general hospital) A1
- o. Hong Kong Adventist Hospital (a general hospital) A1
- p. Hong Kong Central Hospital (a general hospital) A1
- q. Hong Kong Sanatorium and Hospital (a general hospital) A1
- r. Matilda and War Memorial Hospital (a general hospital) A1
- s. St. Paul's Hospital (a general hospital) B1

OTHER GOVERNMENT INSTITUTIONS

1. Aberdeen Jockey Club Clinic (general out-patient facilities, dental clinic, family health centre, eye clinic, chest clinic, social hygiene clinic and methadone clinic) A2
2. Anne Black Health Centre (general out-patient facilities, family health centre, x-ray survey centre, eye clinic and dermatological clinic) B1
3. Central District Health Centre (general out-patient facilities, family health centre, eye clinic and dermatological clinic) A1
4. Central Government Offices Dental Clinic A1
5. Central Police Station Medical Post (general out-patient facilities and dental clinic) A1
6. Chai Wan Health Centre (general out-patient facilities, family health centre, psychiatric clinic and methadone clinic) B1
7. David Trench Rehabilitation Centre (embracing Tang Shiu Kin Physiotherapy Unit, Hong Kong Psychiatric Centre and family health centre) A1
8. Eastern Street Methadone Clinic A1
9. Kennedy Town Jockey Club Clinic (general out-patient facilities, family health centre and dental clinic) A1
10. MacLehose Dental Centre A1
11. Port Health Inoculation Centre, Centre Point, Wanchai A1
12. Sai Ying Pun Jockey Club Polyclinic (general out-patient facilities, chest clinic, dental clinic, eye clinic, ENT clinic, dermatological clinic, social hygiene clinic and specialist clinic for Queen Mary Hospital) A1
13. Shau Kei Wan Jockey Club Clinic (general out-patient facilities, family health centre, maternity home, chest clinic, dental clinic, eye clinic, ENT clinic and dermatological clinic) B1
14. Stanley Dental Clinic B2
15. Stanley Dispensary (general out-patient facilities and family health centre) B2
16. Tang Chi Ngong Specialist Clinic (family health centre, eye clinic, ENT clinic, dermatological clinic, general out-patient facilities for English-speaking Government Servants and their families and specialist clinic for Queen Mary Hospital) A1
17. Violet Peel Polyclinic (general out-patient facilities and methadone clinic) A1
18. Wan Chai Clinic (dental clinic, chest clinic and physiotherapy department) A1

19. Western Dental Clinic

PRISON HOSPITALS/TREATMENT CENTRES

20. Cape Collinson Training Centre

21. Ma Hang Prison

22. Stanley Prison

23. Tai Tam Gap Prison

24. Victoria Prison

A1

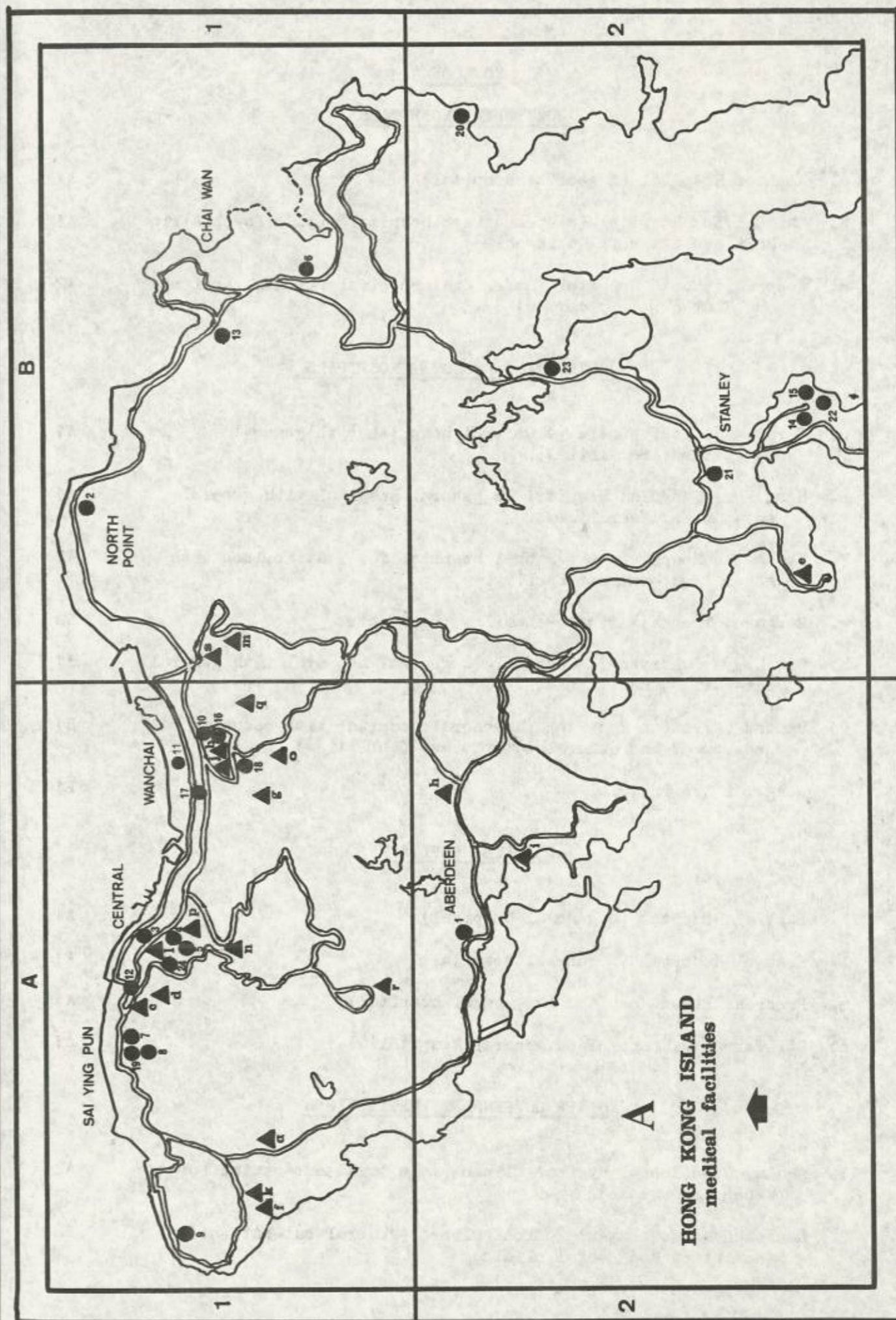
B2

B2

B2

B2

A1



B

KOWLOONGOVERNMENT HOSPITALS

- | | |
|--|----|
| a. Kowloon Hospital (a general hospital) | A1 |
| b. Lai Chi Kok Hospital (a specialised hospital with a Psychiatric Unit and a special skin unit) | A1 |
| c. Queen Elizabeth Hospital (a regional hospital for East Kowloon and East New Territories) | A2 |

GOVERNMENT-ASSISTED HOSPITALS

- | | |
|---|----|
| d. Caritas Medical Centre (a general hospital with general out-patient facilities) | A1 |
| e. Hong Kong Buddhist Hospital (a general hospital with general out-patient facilities) | A1 |
| f. Kwong Wah Hospital (a regional hospital for West Kowloon with general out-patient facilities) | A2 |
| g. Margaret Trench Medical Rehabilitation Centre | B2 |
| h. Out Lady of Maryknoll Hospital (a general hospital with general out-patient facilities) | B1 |
| i. United Christian Hospital (a general hospital with casualty department and general out-patient facilities) | B1 |
| j. Wong Tai Sin Infirmary | B1 |

PRIVATE HOSPITALS

- | | |
|---|----|
| k. Baptist Hospital (a general hospital) | A1 |
| l. Evangel Hospital (a general hospital) | A1 |
| m. Precious Blood Hospital (a general hospital) | A1 |
| n. St. Teresa's Hospital (a general hospital) | A1 |

OTHER GOVERNMENT INSTITUTIONS

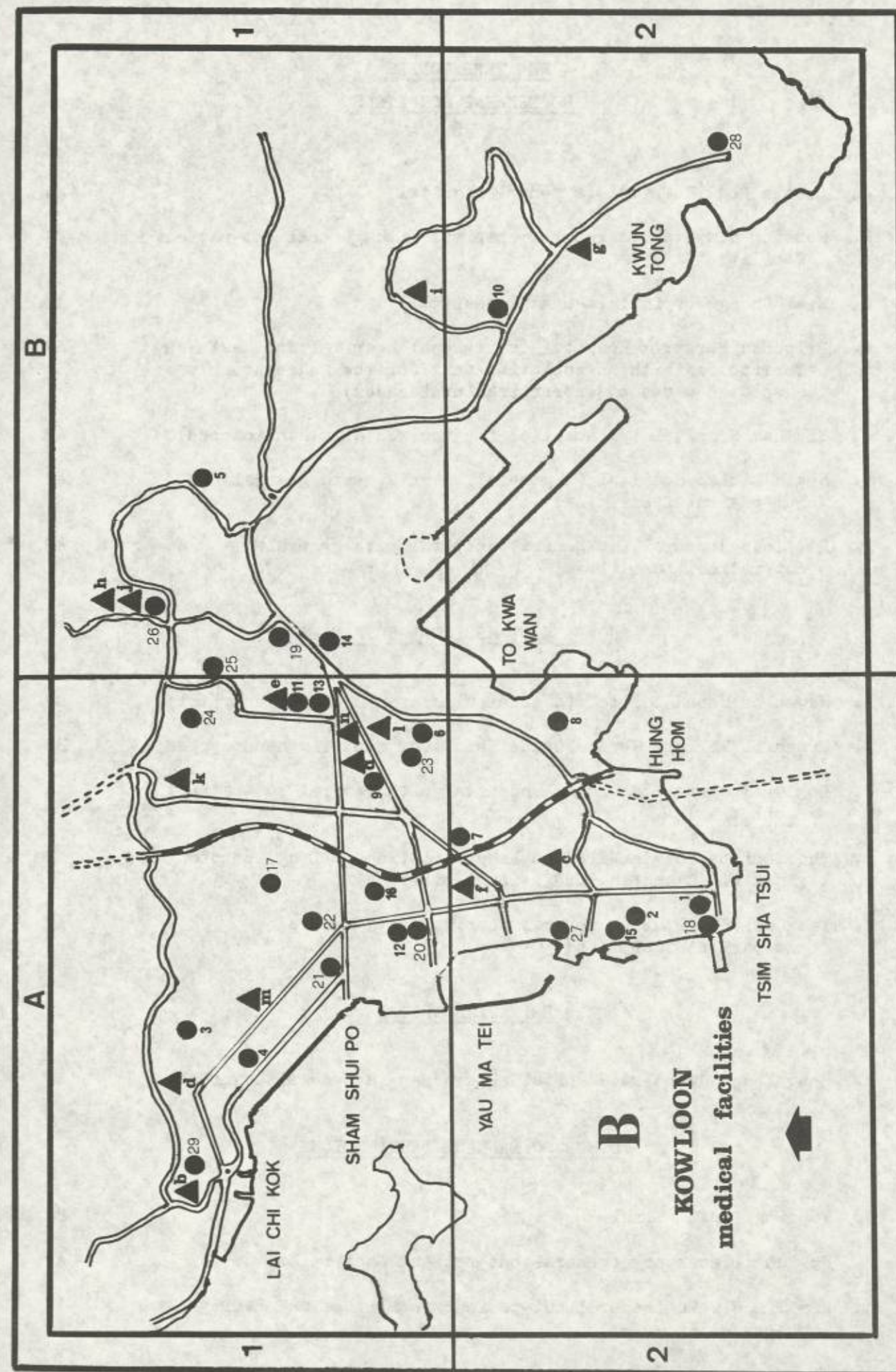
- | | |
|---|----|
| 1. Ashley Road Social Hygiene Clinic (male treatment centre for venereal disease) | A2 |
| 2. Canton Road Government Medical Clinic (general out-patient facilities and dental clinic) | A2 |

- | | |
|--|----|
| 3. Cheung Sha Wan Jockey Club Clinic (general out-patient facilities, family health centre, maternity home and methadone clinic) | A1 |
| 4. Cheung Sha Wan Police Quarters Clinic (general out-patient facilities and dental clinic) | A1 |
| 5. East Kowloon Polyclinic (general out-patient facilities, chest clinic and family health centre) | B1 |
| 6. Farm Road Dental Clinic | A1 |
| 7. Ho Man Tin Methadone Clinic | A2 |
| 8. Hung Hom Clinic (general out-patient facilities and family health centre) | A2 |
| 9. Kowloon Out-patient Department (general out-patient facilities, chest clinic and special skin clinic) | A1 |
| 10. Kwun Tong Jockey Club Health Centre (general out-patient facilities, family health centre, maternity home, dental clinic, eye clinic and methadone clinic) | B2 |
| 11. Li Kee Memorial Dispensary (general out-patient facilities, dental clinic and methadone clinic) | A1 |
| 12. Li Po Chun Health Centre (general out-patient facilities, family health centre, maternity home and methadone clinic) | A1 |
| 13. Lions Club Maternal and Child Health Centre (family health centre and maternity home) | A1 |
| 14. Medical Clinic, Kai Tak Airport | B1 |
| 15. Medical Examination Board | A2 |
| 16. Mong Kok Dental Clinic | A1 |
| 17. Nam Shan Health Centre (general out-patient facilities) | A1 |
| 18. Port Health Inoculation Centre, Star House, Tsim Sha Tsui | A2 |
| 19. Robert Black Health Centre (general out-patient facilities, family health centre, ENT clinic and methadone clinic) | B1 |
| 20. Rotary Club of Kowloon Child Assessment Clinic (Arran Street) | A1 |
| 21. Sham Shui Po Public Dispensary (general out-patient facilities and methadone clinic) | A1 |
| 22. Shek Kip Mei Health Centre (general out-patient facilities, dermatological clinic, chest clinic, family health centre and methadone clinic) | A1 |
| 23. Tin Kwong Road Police Quarters Dental Clinic | A1 |

- | | |
|---|----|
| 24. Wang Tau Hom Jockey Club Clinic (general out-patient facilities, family health centre, maternity home, eye clinic and methadone clinic) | A1 |
| 25. Wong Tai Sin Police Quarters Clinic (general out-patient facilities and dental clinic) | B1 |
| 26. Wu York Yu Clinic (general out-patient facilities, family health centre, maternity home and methadone clinic) | B1 |
| 27. Yau Ma Tei Jockey Club Clinic (general out-patient facilities, social hygiene clinic, dermatological clinic, dental clinic, eye clinic, ENT clinic, chest clinic, family health centre, x-ray survey centre, psychiatric clinic and methadone clinic) | A2 |
| 28. Yau Tong Maternal and Child Health Centre (family health centre) | B2 |

PRISON HOSPITAL/TREATMENT CENTRE

- | | |
|----------------------------------|----|
| 29. Lai Chi Kok Reception Centre | A1 |
|----------------------------------|----|



NEW TERRITORIES
GOVERNMENT HOSPITALS

a. Castle Peak Hospital (a mental hospital)	A1
b. Fanling Hospital (a general hospital with general out-patient facilities)	B1
c. Kwai Chung Hospital (a mental hospital)	A2
d. Princess Margaret Hospital (a regional hospital for West New Territories with an isolation unit for the segregation of suspected cases of quarantinable diseases)	A2
e. Siu Lam Hospital (a hospital for the mentally handicapped)	A2
f. South Lantau Hospital (a general hospital with general out-patient facilities)	A2
g. St. John Hospital (a general hospital with general out-patient facilities)	A2

GOVERNMENT-ASSISTED HOSPITALS

h. Haven of Hope Hospital (a tuberculosis and general hospital)	B2
i. Pinehill Village Severe Grade Unit (for mentally handicapped)	B1
j. Pok Oi Hospital (a general hospital with general out-patient facilities)	A1
k. The Society for the Aid and Rehabilitation of Drug Addicts (Shek Kwu Chau Drug Addiction Centre)	A2
l. Yan Chai Hospital (a general hospital with general out-patient facilities)	A2

PRIVATE HOSPITAL

m. Hong Kong Adventist Hospital, Tsuen Wan (a general hospital)	A2
---	----

OTHER GOVERNMENT INSTITUTIONS

1. Fanling Dental Clinic	B1
2. Ho Tung Dispensary (general out-patient facilities)	A1
3. Kam Tin Clinic (general out-patient facilities and family health centre)	A1

4. Lady Trench Polyclinic (general out-patient facilities, dental clinic, eye clinic, dermatological clinic and methadone clinic)	A2
5. Lek Yuen Health Centre (general out-patient facilities)	B1
6. Maurine Grantham Health Centre (family health centre and maternity home)	A2
7. North Kwai Chung Clinic (general out-patient facilities, family health centre and methadone clinic)	A2
8. North Lamma Clinic (general out-patient facilities, family health centre and maternity home)	A2
9. Peng Chau Dispensary (general out-patient facilities, family health centre, maternity home, eye clinic, special skin clinic and social hygiene clinic)	A2
10. Sai Kung Dispensary (general out-patient facilities, family health centre, maternity home, eye clinic and chest clinic)	B2
11. Sha Tau Kok Clinic (general out-patient facilities, family health centre and maternity home)	B1
12. Sha Tin Clinic and Maternity Home (general out-patient facilities, family health centre, maternity home and chest clinic)	B1
13. Shek Wu Hui Jockey Club Clinic (general out-patient facilities, family health centre, maternity home, eye clinic, chest clinic, social hygiene clinic and methadone clinic)	A1
14. Mui Wo Dispensary (general out-patient facilities, family health centre and maternity home)	A2
15. South Kwai Chung Jockey Club Polyclinic (general out-patient facilities, chest clinic, family health centre, maternity home, eye clinic, ENT clinic, psychiatric clinic, social hygiene clinic and specialist clinic for Princess Margaret Hospital)	A2
16. Tai O Jockey Club Clinic (general out-patient facilities, family health centre, maternity home, dental clinic and chest clinic)	A2
17. Tai Po Jockey Club Clinic (general out-patient facilities, family health centre, maternity home, dental clinic, eye clinic, chest clinic, special skin clinic and social hygiene clinic)	B1
18. Tuen Mun Clinic (general out-patient facilities, family health centre, maternity home, eye clinic, chest clinic and methadone clinic)	A1
19. Yuen Long Jockey Club Health Centre (general out-patient facilities, family health centre, maternity home, dental clinic, eye clinic, chest clinic, special skin clinic and social hygiene clinic)	A1

PRISON HOSPITALS/TREATMENT CENTRES

20. Chi Ma Wan Prison	A2
21. Hei Ling Chau Addiction Treatment Centre	A2
22. Lai King Training Centre	A2
23. Ma Po Ping Prison	A2
24. Nei Kwa Chau Detention Centre	A2
25. Pik Uk Correctional Institution	B2
26. Pik Uk Prison	B2
27. Sha Tsui Detention Centre	A2
28. Siu Lam Psychiatric Centre	A2
29. Tai Lam Centre for Women	A2
30. Tai Lam Addiction Treatment Centre	A2
31. Tong Fuk Centre	A2

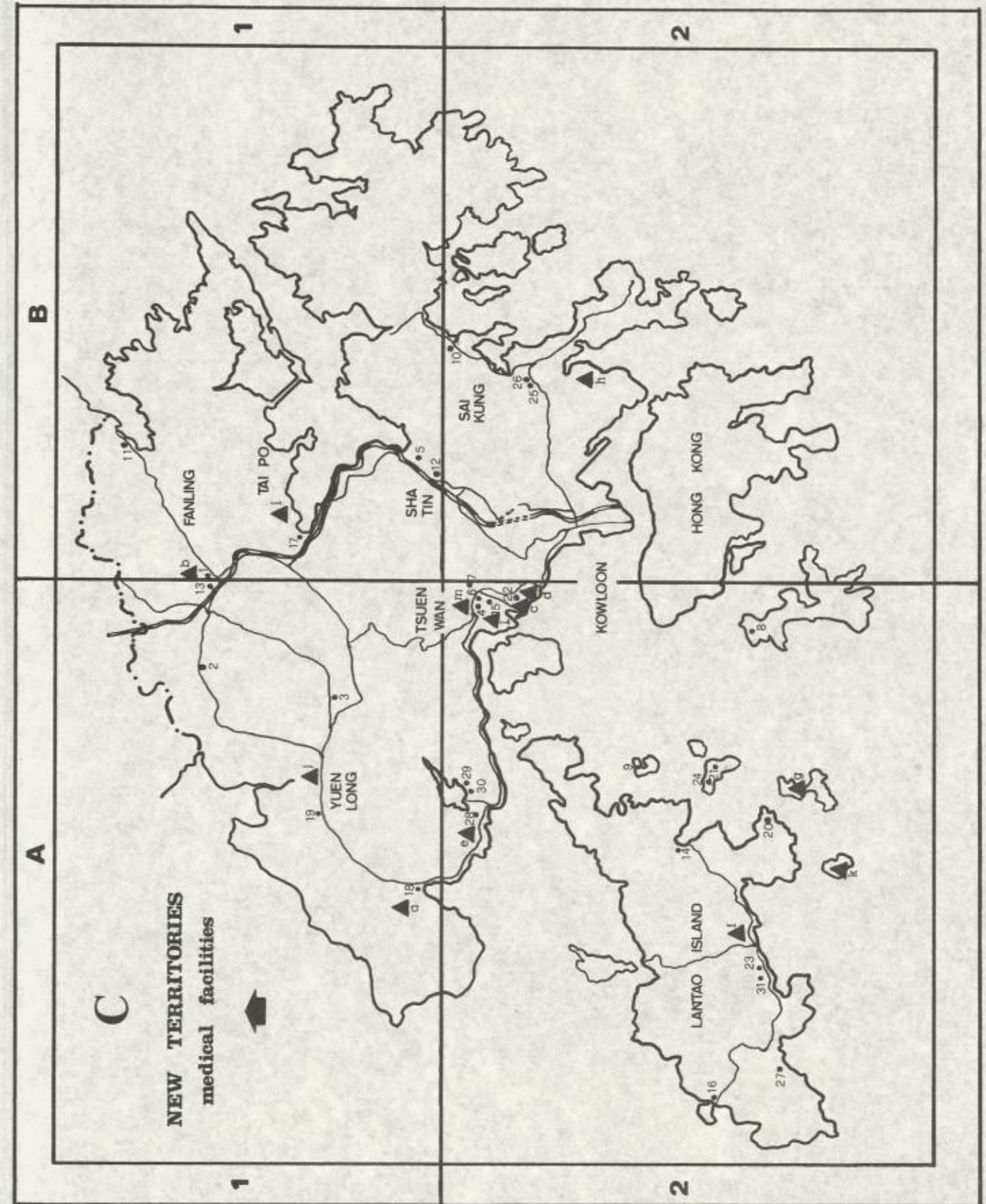


TABLE I

Number of specimens of *...*

...

...

...

FIGURES

...

...

...

...

...

...

...

INDEX TO FIGURES

	<u>Figure No.</u>
<u>I. Vital Statistics</u>	
Infant and Neo-natal Mortality Rate 1961 to 1980	1
Age Specific Death Rate by Sex 1980	2
<u>II. Communicable Diseases</u>	
Notification Rate of Major Infectious Diseases 1961 to 1980	3
Monthly Measles Notifications 1961 to 1980	4
<u>III. Health Services</u>	
Tuberculosis Mortality Rate by Age and Sex 1970 and 1980	5
Tuberculosis Notification Rate by Age and Sex 1970 and 1980	6
Tuberculosis Mortality Rates and Percentage of New Borns Vaccinated (B.C.G.) 1952 to 1980	7
Total Syphilis (Non-congenital) 1966 to 1980	8
Gonorrhoea 1966 to 1980	9
<u>IV. Hospital Services</u>	
Hospital Beds 1971 to 1980	10
<u>V. Clinic Services</u>	
Total Out-patient Attendances in Government Institutions 1971 to 1980	11

FIGURE 1
INFANT AND NEO-NATAL MORTALITY RATE 1961 - 1980

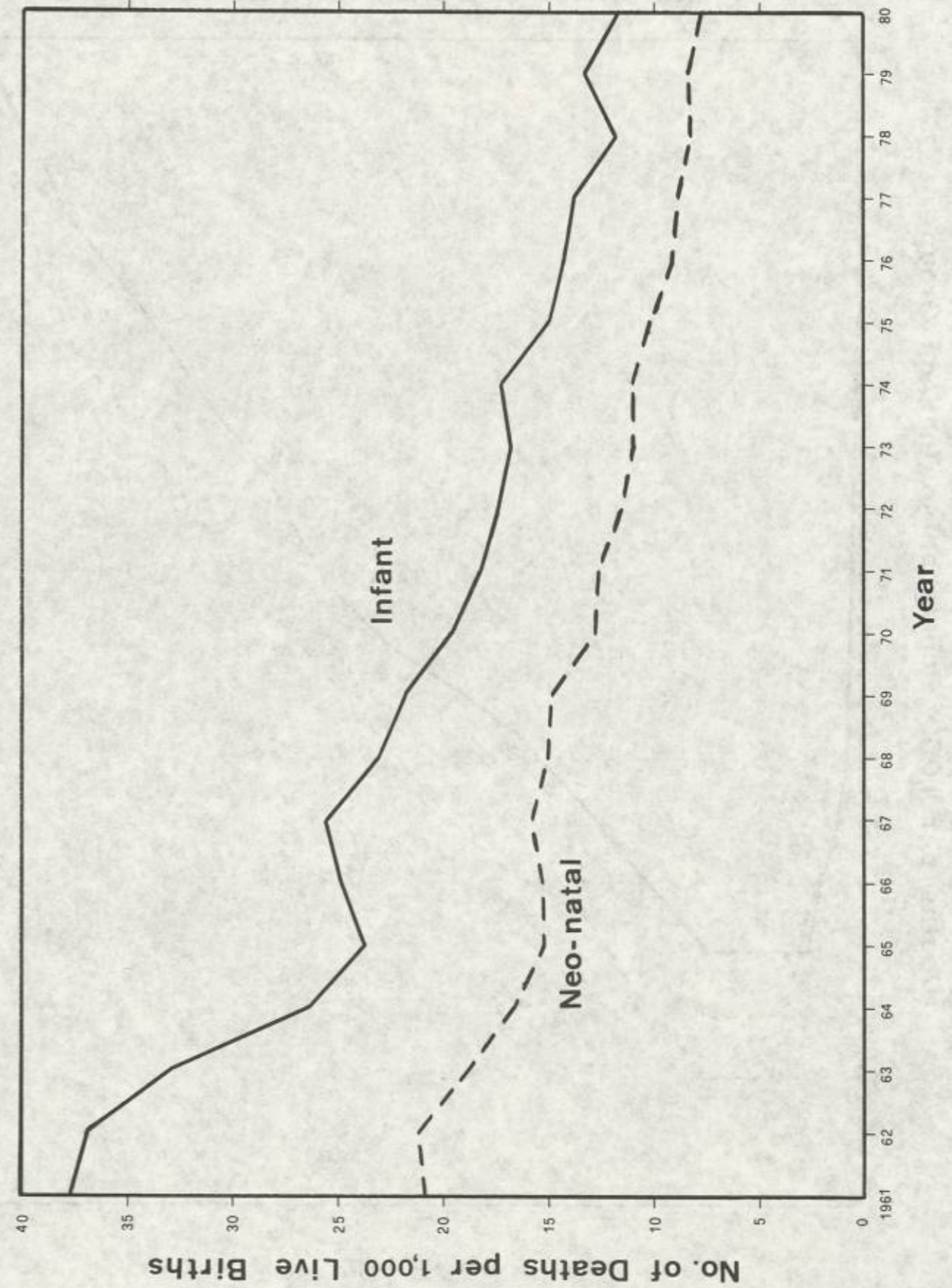


FIGURE 2

AGE SPECIFIC DEATH RATE BY SEX 1980

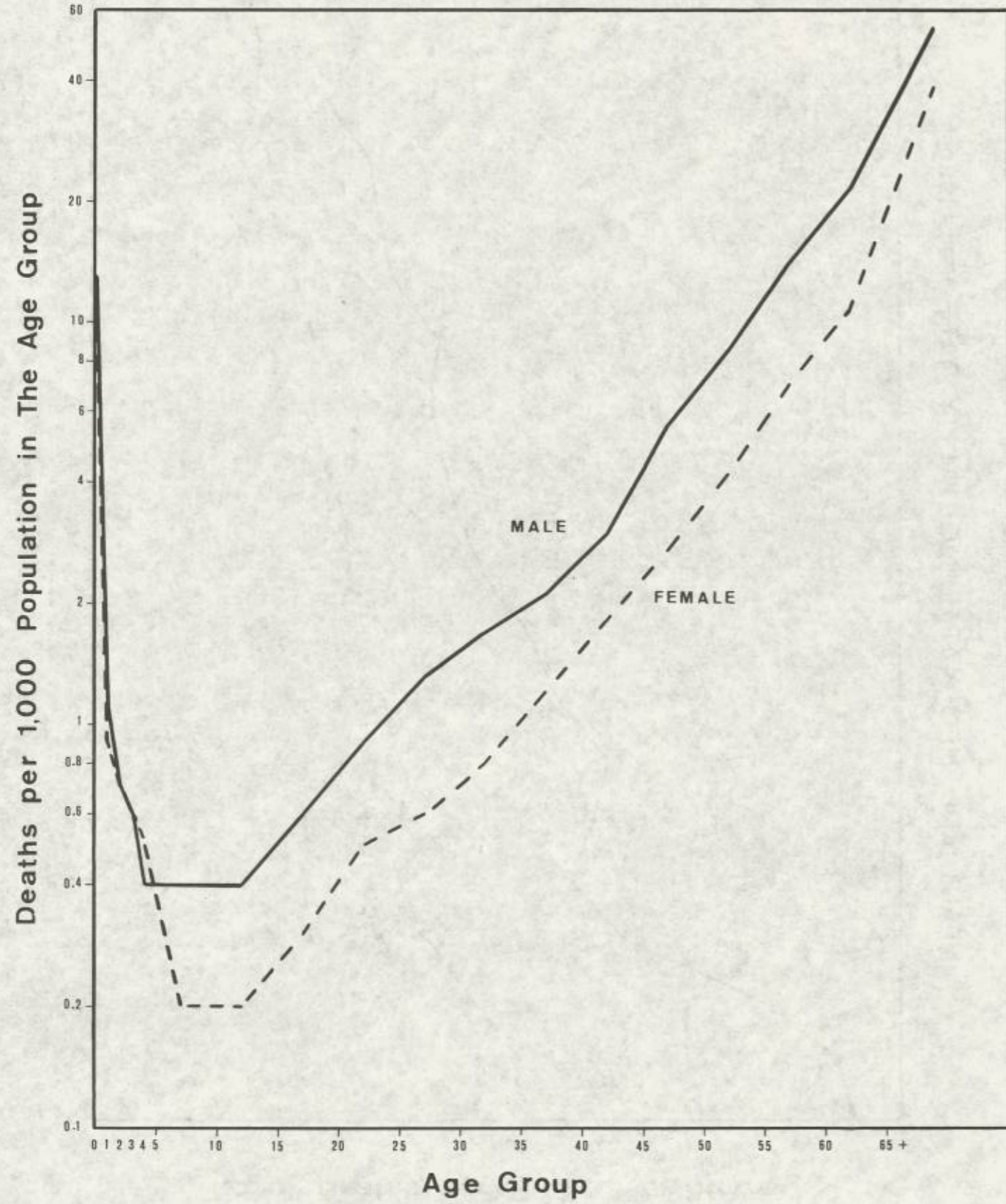


FIGURE 3
NOTIFICATION RATE OF MAJOR INFECTIOUS DISEASES
1961 TO 1980

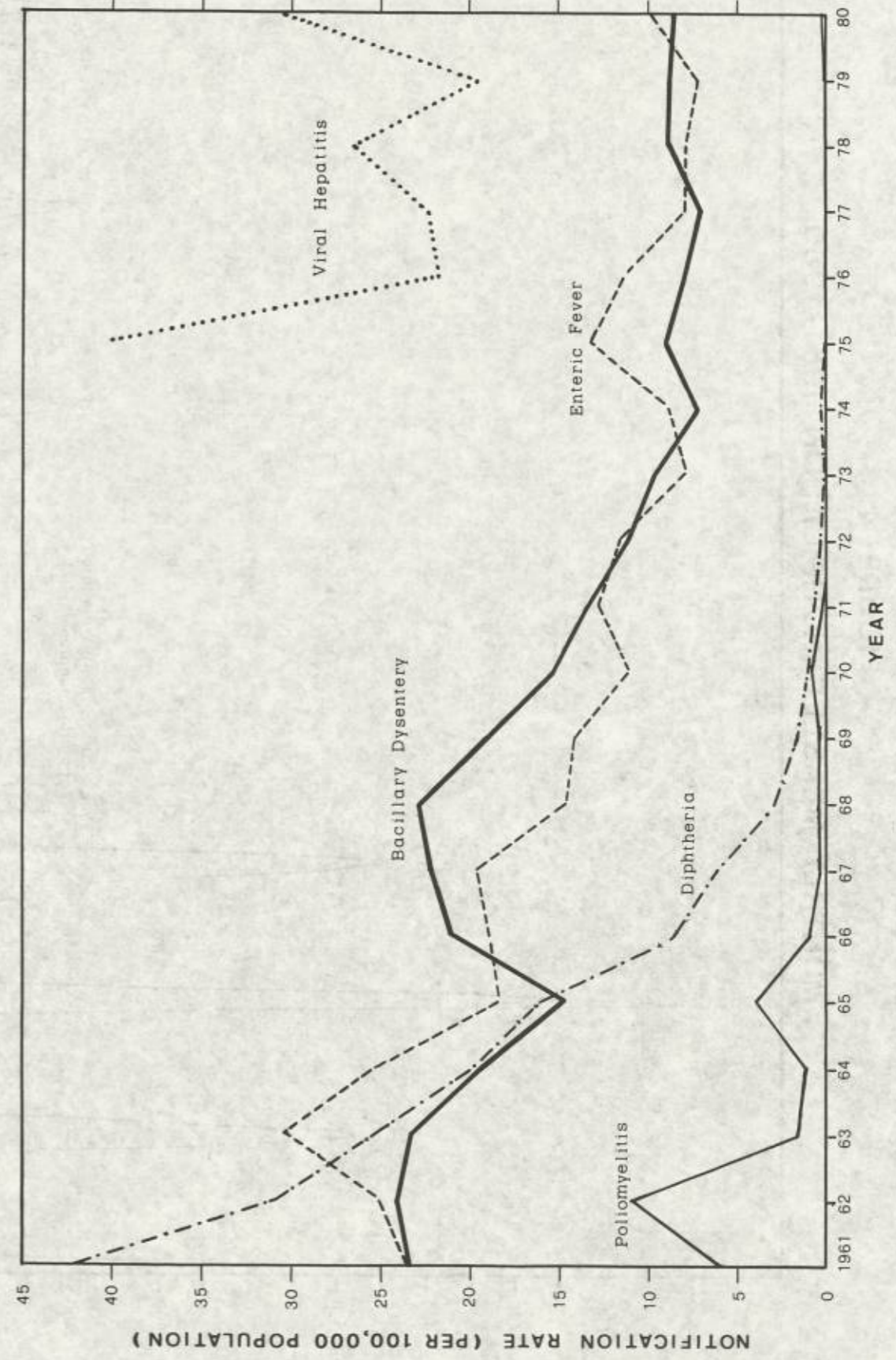


FIGURE 4
MONTHLY MEASLES NOTIFICATION 1961-1980

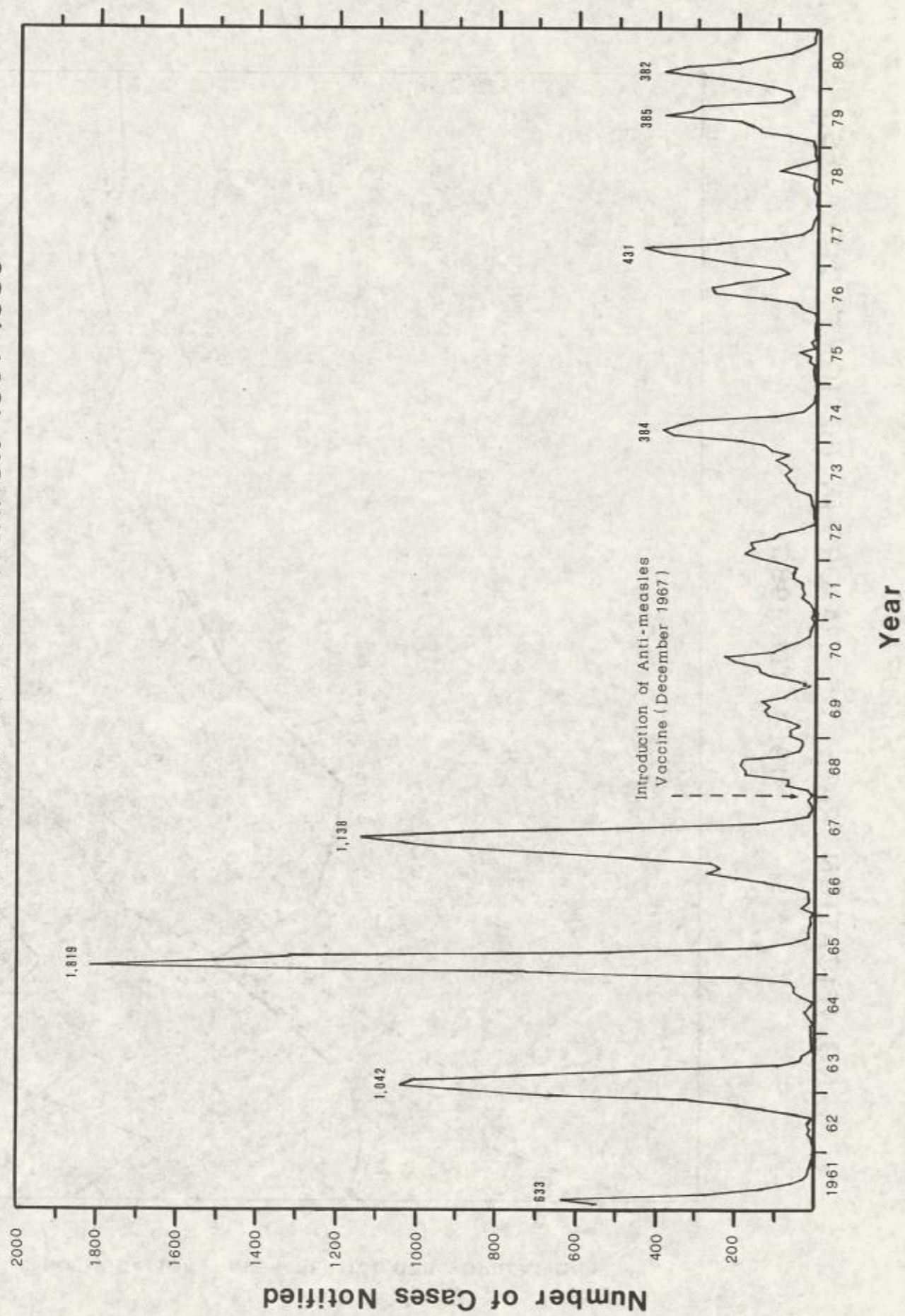


FIGURE 5

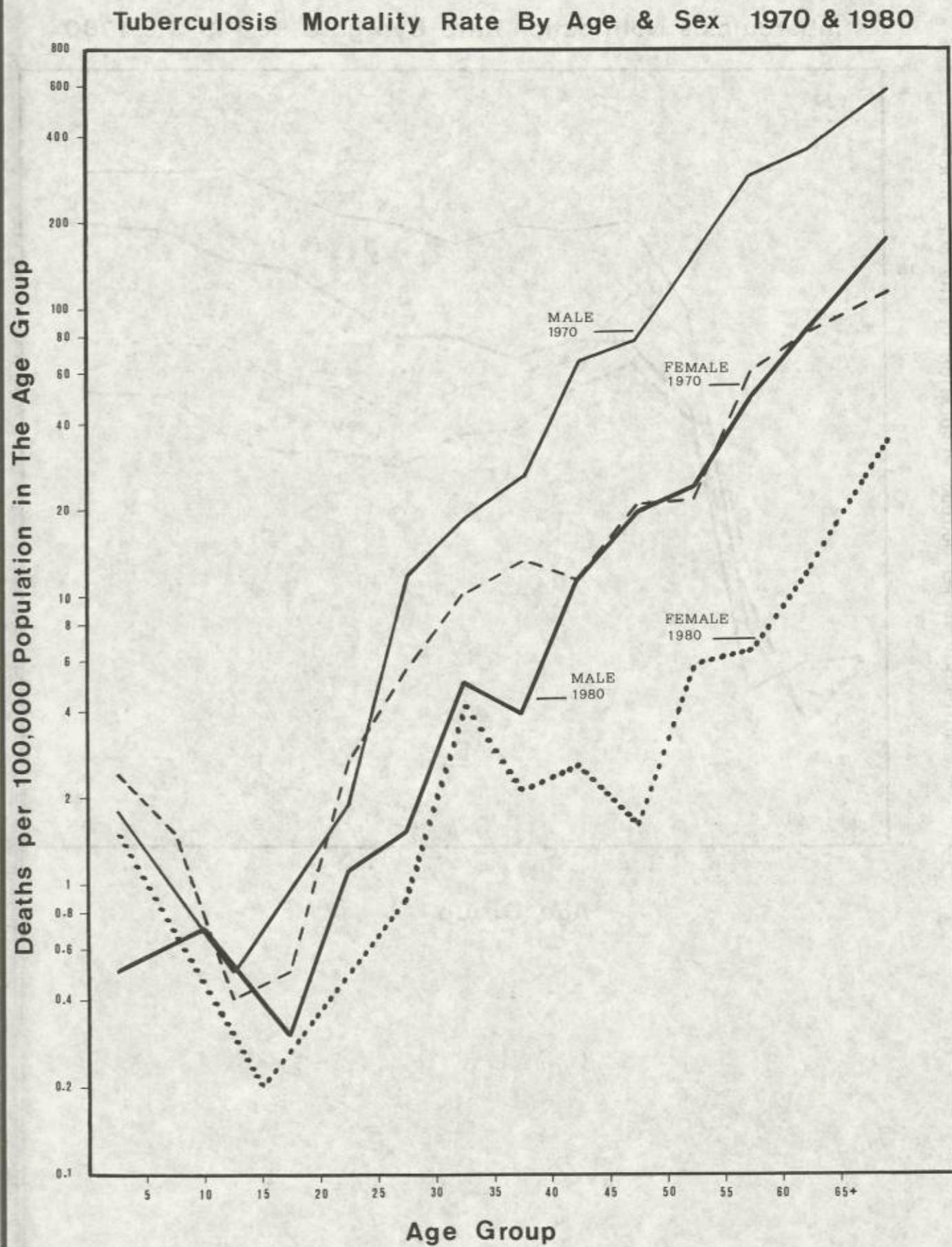


FIGURE 6

Tuberculosis Notification Rate By Age & Sex 1970 & 1980

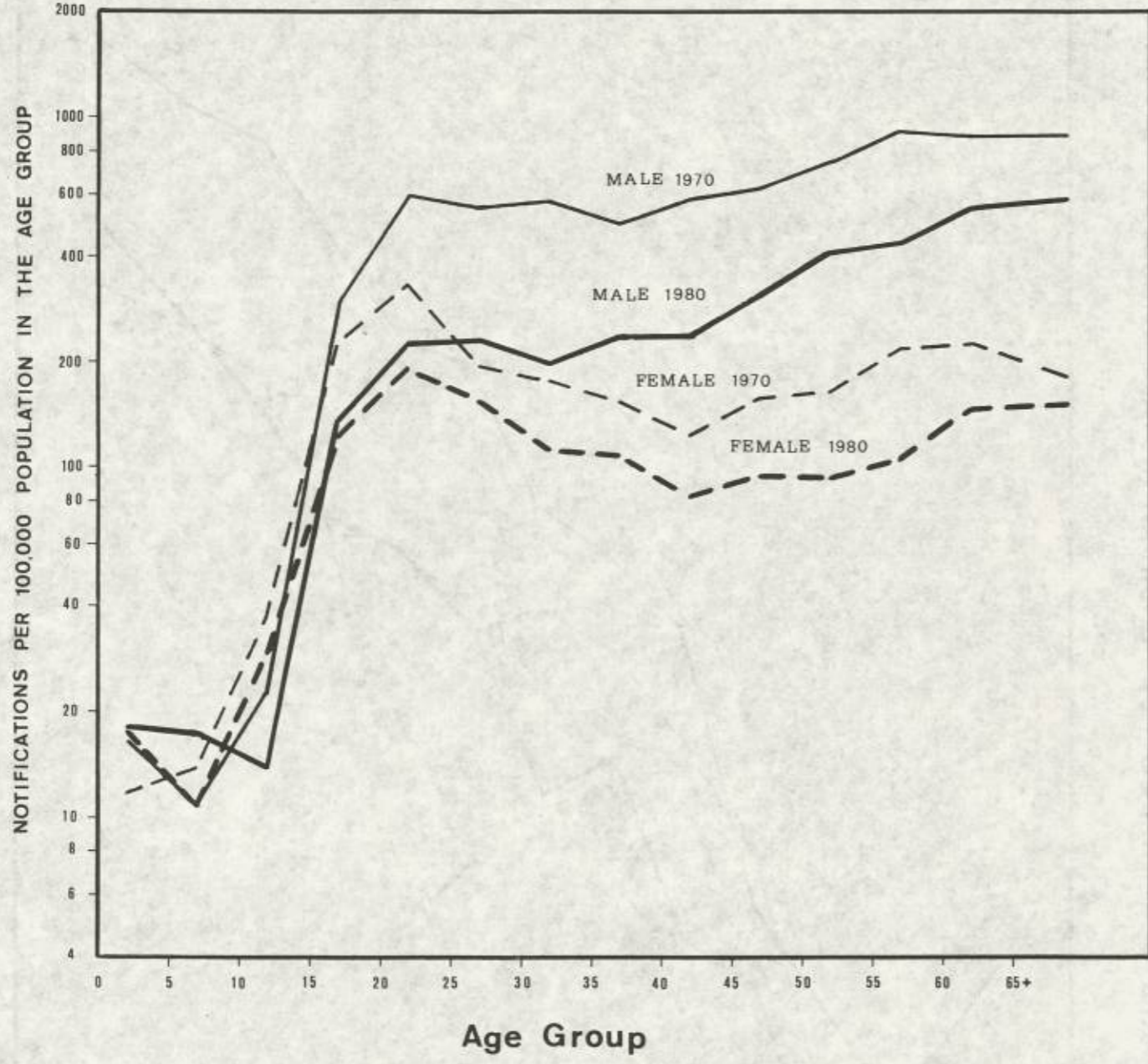


FIGURE 7

TUBERCULOSIS MORTALITY RATES & PERCENTAGE OF NEW BORN VACCINATED (B.C.G.) 1952 TO 1980

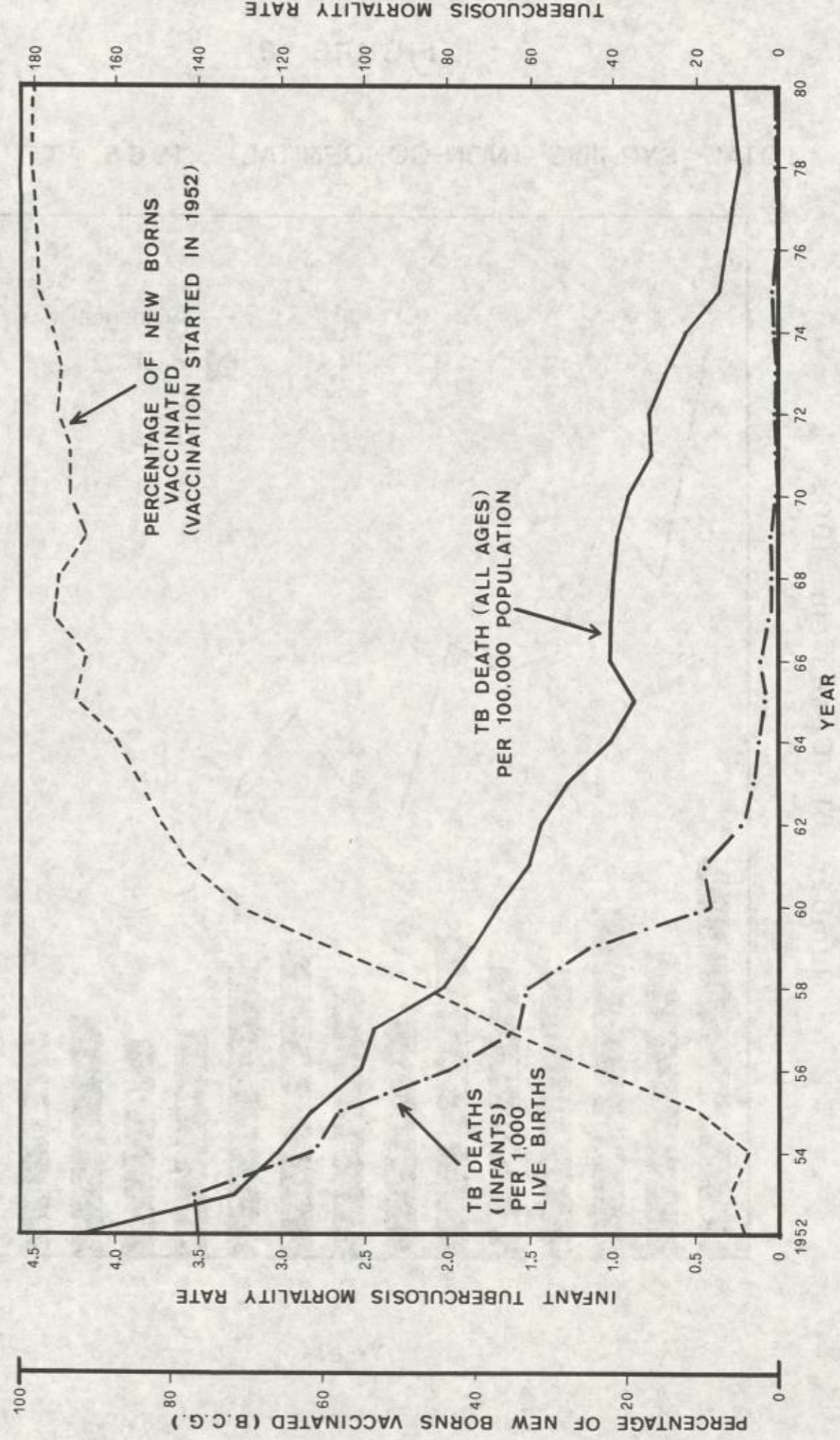
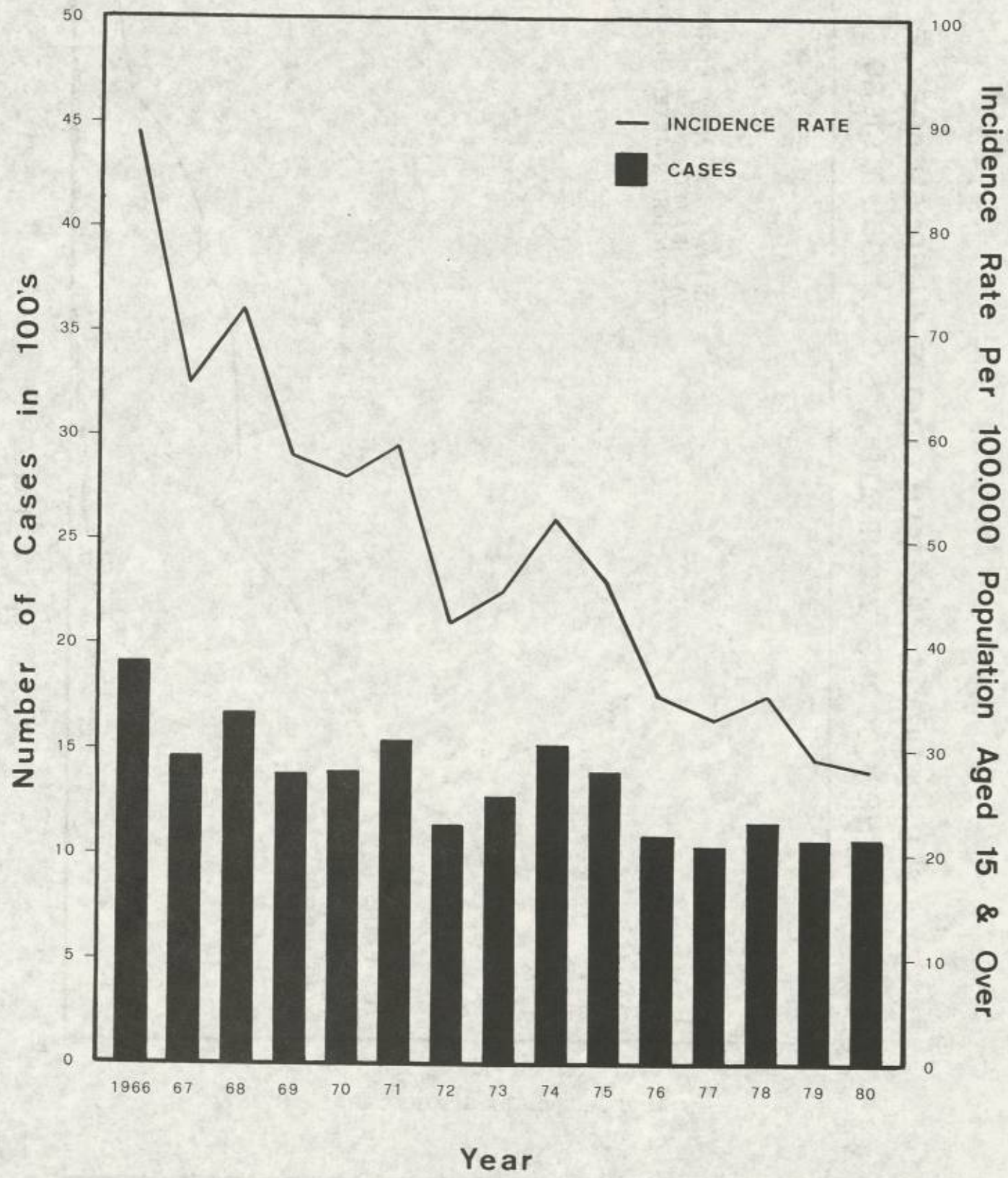


FIGURE 8

TOTAL SYPHILIS (NON-CONGENITAL) 1966 TO 1980



Incidence Rate Per 100,000 Population Aged 15 & Over

FIGURE 9
GONORRHOEA 1966 TO 1980

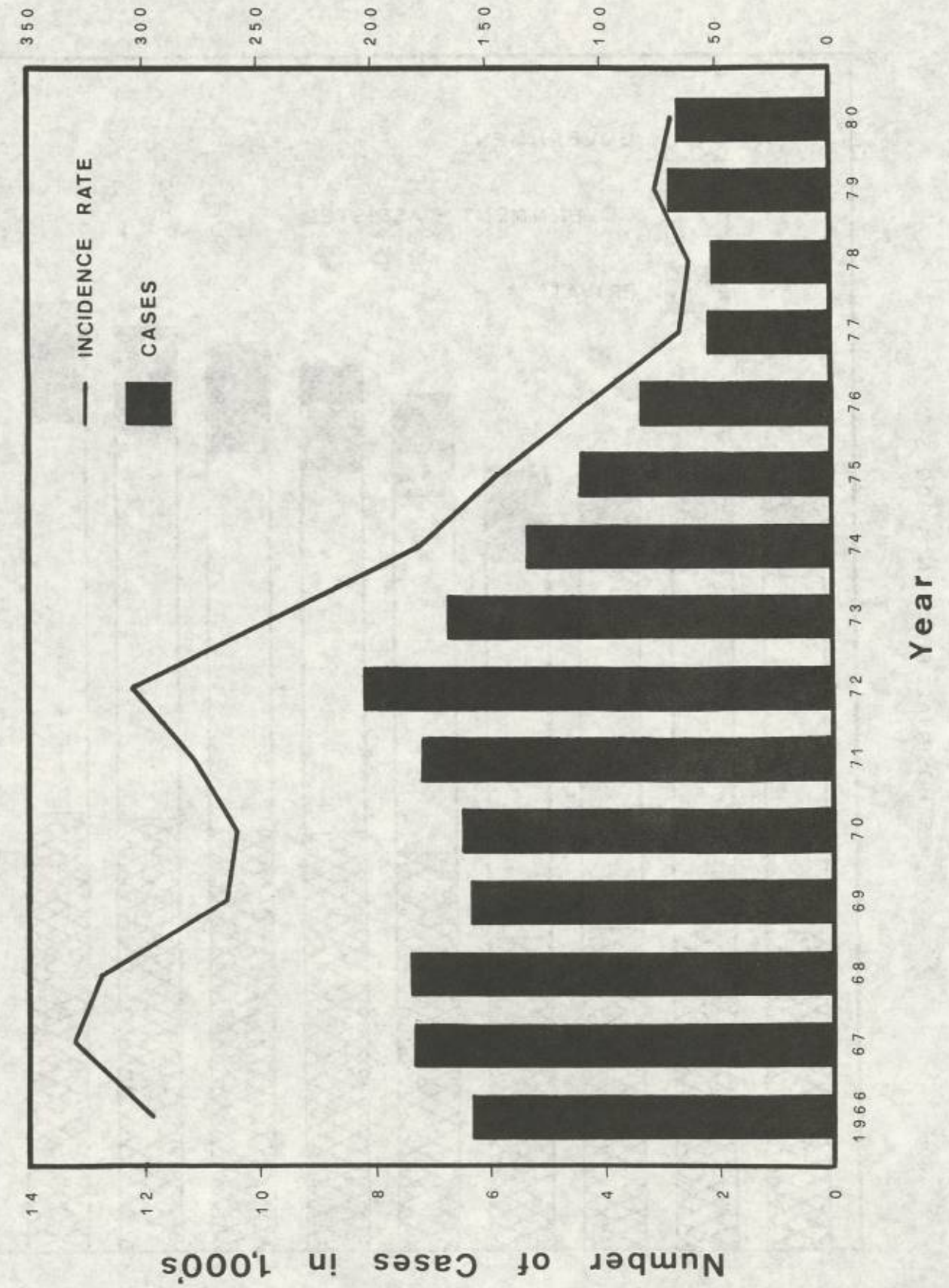


FIGURE 10

HOSPITAL BEDS 1971 - 1980

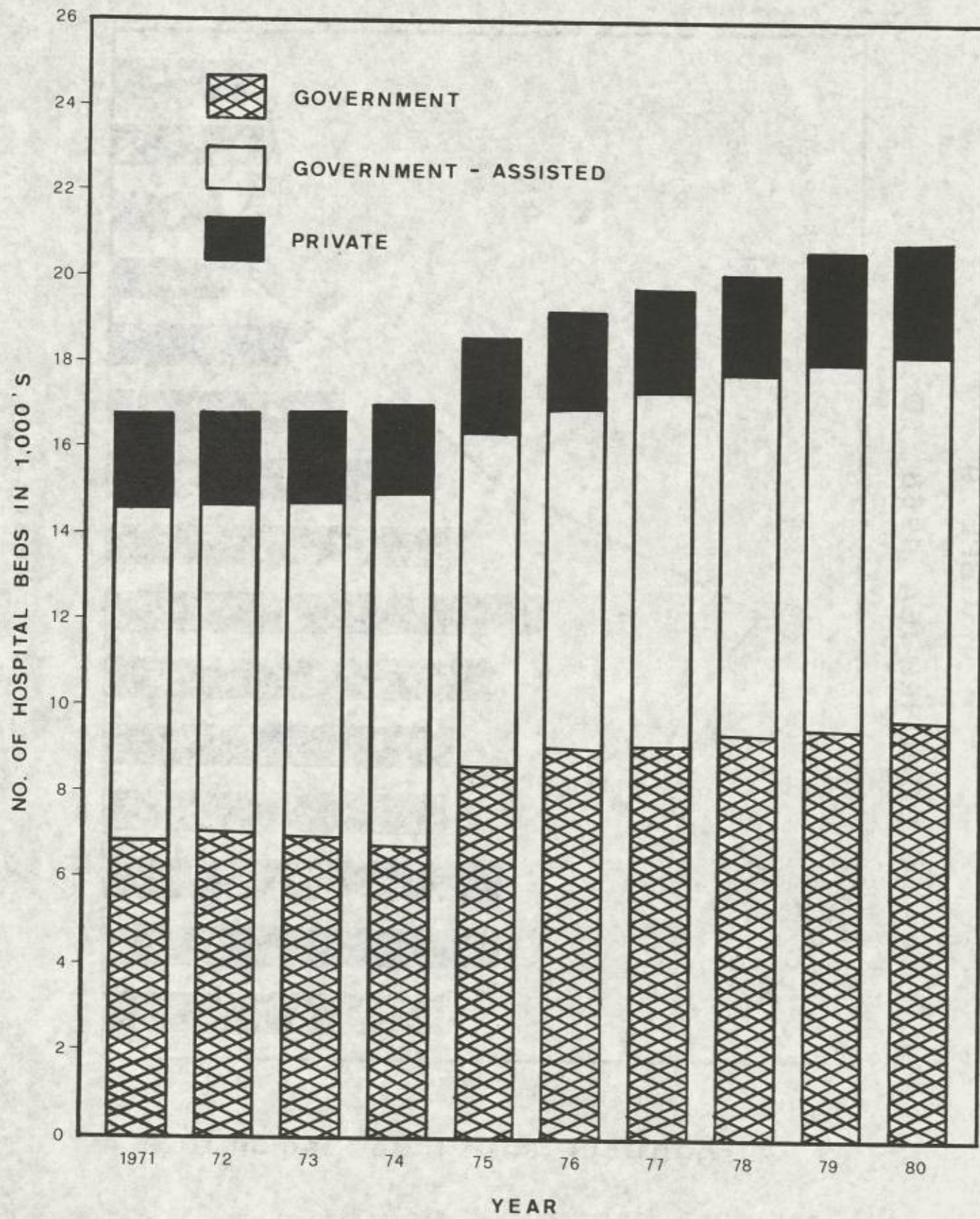
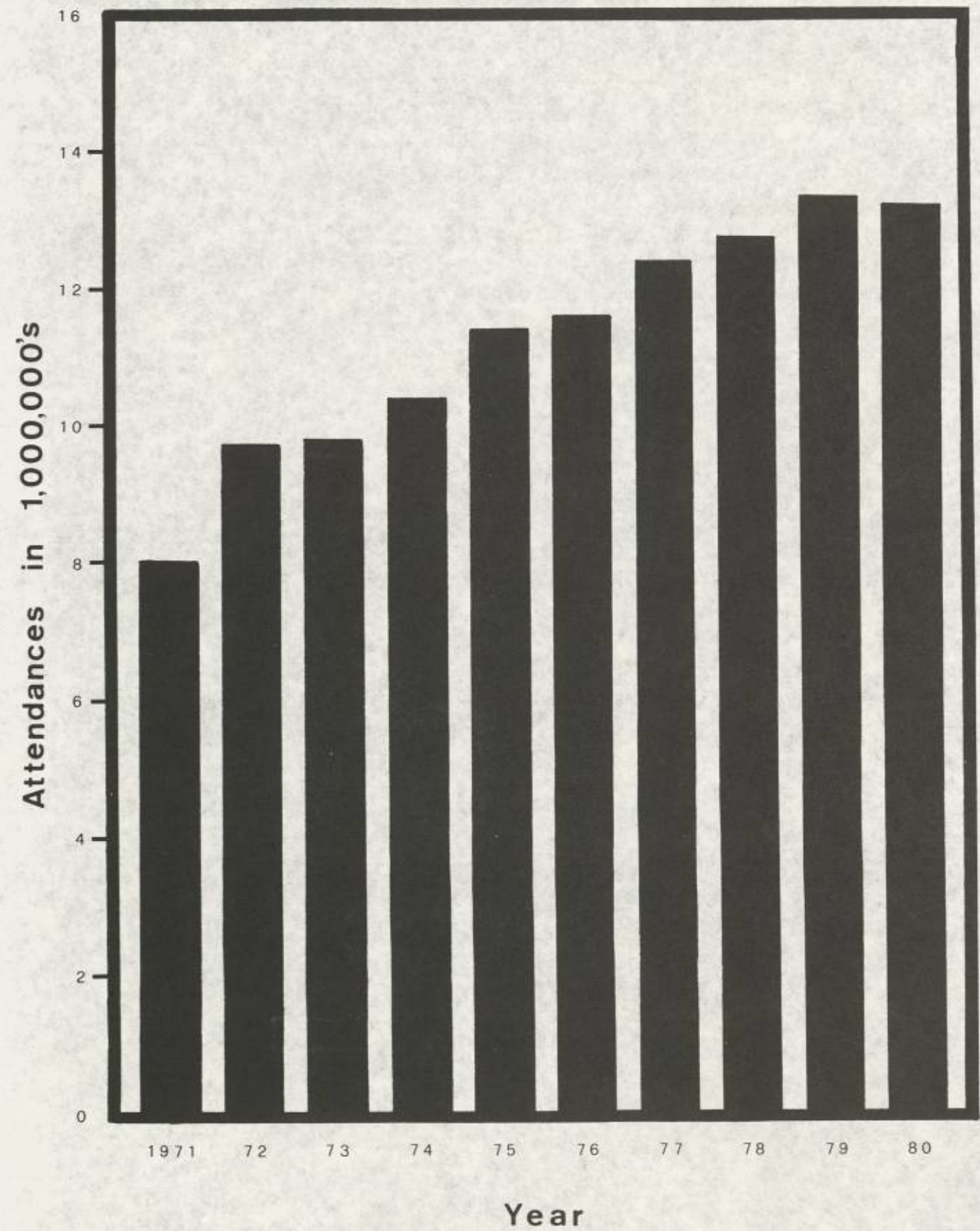
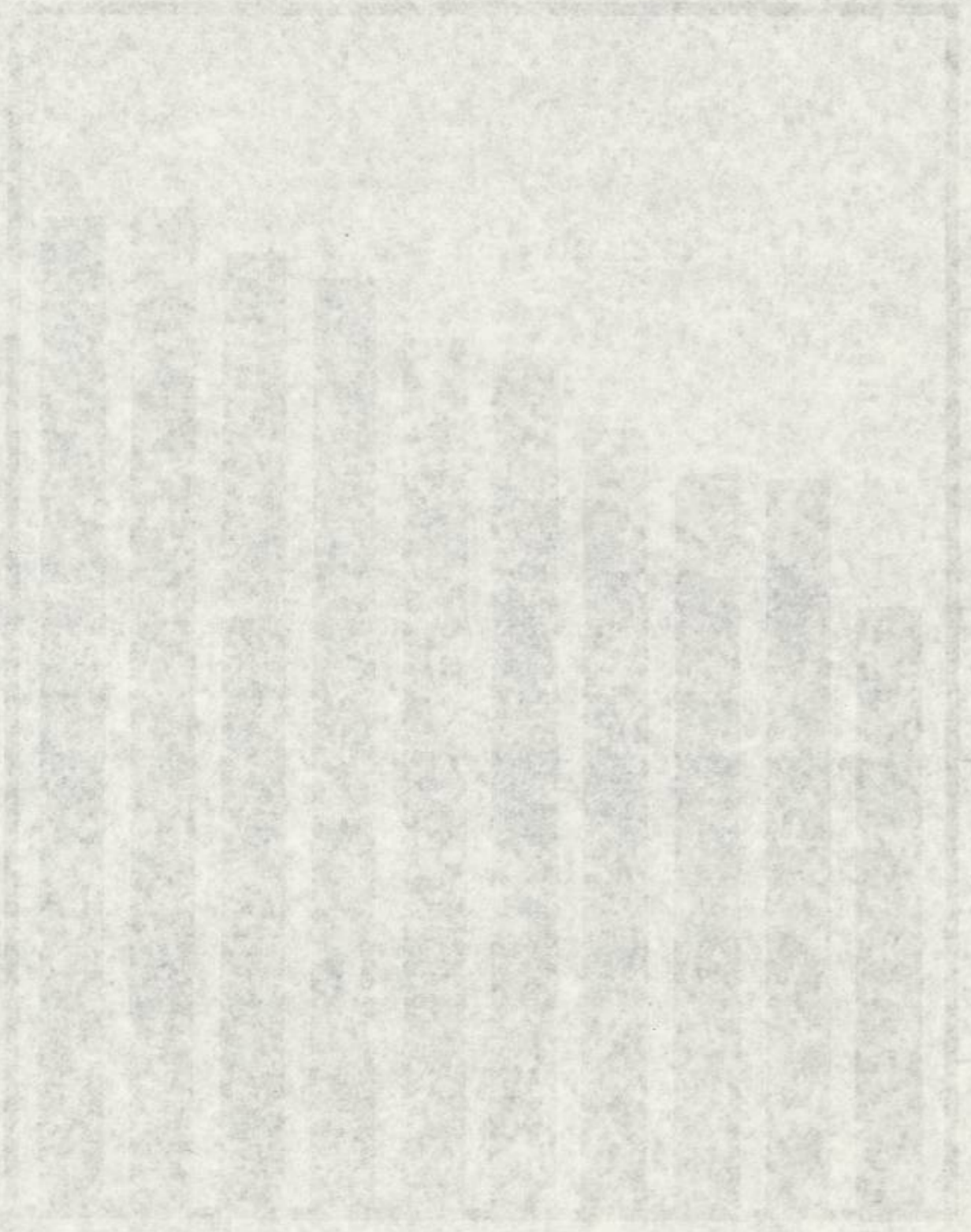


FIGURE 11

TOTAL OUT-PATIENT ATTENDANCES IN GOVERNMENT INSTITUTIONS 1971 TO 1980



U.S. GOVERNMENT PRINTING OFFICE: 1967



1000000

STATISTICAL TABLES

INDEX TO STATISTICAL TABLES

	TABLE NO.
I. <u>Administration</u>	
Establishment of the Medical and Health Department as at 31st March 1981	1
Organisation of Medical and Health Department 1980/81	2
Statement of expenditure from 1976/77 to 1980/81	3
Legislation of Medical and Health Importance April 1980 to March 1981	4
Work of Statutory Councils - April 1980 to March 1981	5
Work of Statutory Boards - April 1980 to March 1981	6
II. <u>Vital Statistics</u>	
Estimated Population By Age Group at Mid-1980	7
Vital Statistics (Absolute Number) 1951 to 1980	8
Vital Statistics (Rate) 1951 to 1980	9
Hong Kong Death Rates 1966 to 1980	10
Major Causes of Infant Deaths 1961, 1970 and 1976 to 1980	11
Major Causes of Maternal Deaths 1961, 1970 and 1976 to 1980	12
Proportionate Mortality by Disease Group 1961, 1970 and 1976 to 1980	13
The Ten Leading Causes of Death by Age and Sex 1980	14
Supplementary Classification of External Causes of Injury and Poisoning 1980	14(a)
Leading Causes of Death 1961, 1970 and 1980	15
Number of Cancer Deaths by Age and Sex 1980	16
Main Causes of Death from Cancer in Hong Kong 1971 to 1980	17
New Cases of Cancer Notified to the Cancer Registry by Age and Sex 1978	18
New Overseas Cases of Cancer Diagnosed in Hong Kong 1978	19
Deaths from Heart Diseases by Age and Sex 1980	20

	TABLE NO.
III. <u>Communicable Diseases</u>	
Infectious Diseases Notified 1976 to 1980	21
Incidence and Death Rates of Certain Infectious Diseases 1976 to 1980	22
Principal Infectious Diseases Notified by Age and Sex 1980	23
Malaria 1976 to 1980	24
Prophylactic Immunizations 1976 to 1980	25
IV. <u>Health Services</u>	
(a) Tuberculosis and Chest Service	
Tuberculosis Mortality 1961, 1970 and 1976 to 1980	26
Tuberculosis in Childhood 1961, 1970 and 1976 to 1980	27
Tuberculosis Notifications 1961, 1970 and 1976 to 1980	28
Work of Tuberculosis and Chest Service 1980	29
Examination of New Contacts of Tuberculosis Patients 1980	30
(b) Social Hygiene Service	
Annual Attendances & Trend of Venereal Diseases 1971 to 1980	31
VDRL Examinations in Expectant Mothers 1976 to 1980	32
Leprosy Cases 1971 to 1980	33
Analysis of Dermatological Conditions Presenting at Clinics 1980	34
(c) Family Health Services	
Distribution of Family Health Centres as at 31st March 1981	35
Work of Family Health Services (Maternal and Child Health) 1979 and 1980	36
Work of Family Health Services (Comprehensive Observation Service) 1979 and 1980	36(a)
Work of Family Health Services (Family Planning) 1979 and 1980	37

TABLE NO.

(d) Occupational Health Service	
Work of Occupational Health Division 1979 and 1980	38
Environmental and Biological Monitoring and Survey Work of Occupational Health Division 1980	39
(e) Port Health Service	
Work of the Port Health Service 1979 and 1980	40
V. Hospital Services	
(a) Hospital Beds and In-patients	
Number of Hospital Beds in Hong Kong as at 31st December 1980	41
In-patients Treated in Government, Government- Assisted and Private Institutions 1980	42
Disease Classification of In-patients Treated in Hospitals and of all Deaths in Hong Kong 1980	43
(b) Government Hospitals	
Expenditure on Selected Hospitals 1979/80 and 1980/81	44
Work of Queen Mary, Tang Shiu Kin, Queen Elizabeth and Princess Margaret Hospitals 1980	45
Work of the Tsan Yuk Hospital 1979 and 1980	46
Psychiatric In-patients 1980	47
Work of Hospital Casualties 1976 to 1980	48
Analysis of Casualty Cases Treated 1980	49
(c) Government-Assisted Hospitals	
Government Medical Subventions to Voluntary Institutions 1976/77 to 1980/81	50
Work of Kwong Wah Hospital, United Christian Hospital and Caritas Medical Centre 1980	51
Work of the Grantham Hospital 1979 and 1980	52
Work of the Ruttonjee Sanatorium 1979 and 1980	53

TABLE NO.

VI. Clinic Services	
Total Out-patient Attendances at Government and Government-assisted Institutions 1980	54
Total Attendances at Specialist Clinics in Government and Government-assisted Institutions 1980	55
Psychiatric Day-patients and Out-patients 1980	56
Work of the Ophthalmic Service 1979 and 1980	57
Causes for Permanent Blindness Registration 1979 and 1980	58
Work of the Ear-Nose-Throat Service 1979 and 1980	59
Work of the General Dental Service 1976 to 1980	60
Work of Arran Street Assessment Clinic 1979 and 1980	60(a)
District Midwifery Service 1979 and 1980	61
School Medical Service 1980/81	62
Medical Clinics Registration as at 31st March 1981	63
VII. Special Services	
Work of the Institute of Pathology 1979 and 1980	64
Work of Blood Banks 1980	65
Work of Public Mortuaries 1979 and 1980	66
Work of Radiodiagnostic Division 1980	67
Work of Radiotherapeutic Division 1979 and 1980	68
Work of the Forensic Pathology Laboratories 1979 and 1980	69
VIII. Other Services	
Work of Pharmaceutical Service 1979/80 and 1980/81	70
Work of Medical Social Service 1980	71
Work of Physiotherapy Service 1980	72
Work of Occupational Therapy Service 1980	73
Work of Prosthetic-Orthotic Service 1980	74
Work of Medical Examination Board 1979 and 1980	75

TABLE NO.

IX. <u>Training Programmes</u>	
Training of Nursing Staff in 1980	76
Overseas Courses of Instruction 1980/81	77
Departmental Training 1980/81	78
X. <u>Medical Development</u>	
Building Programme 1980/81	79
XI. <u>Miscellaneous</u>	
Attendance at Conferences etc. Overseas 1980/81	80
Overseas Visitors 1980/81	81
Publications 1980/81	82
Samaritan Fund 1980/81	83
List of Donations Received for the Year Ended 31st March 1981	84

TABLE 1
ESTABLISHMENT OF THE MEDICAL AND HEALTH DEPARTMENT AS AT 31.3.81

Grade	Zone	Establishment													Total	Strength on 31.3.81			
		Headquarters	Queen Mary Hospital	Queen Elizabeth Hospital	Princess Margaret Hospital	Kwai Chung Hospital	Lai Chi Kok Hospital	Kowloon Hospital	Castle Peak Hospital	Mental Health Centres	Tsuan Yuk Hospital	Prince of Wales Hospital	Dental Service	TB & Chest Service			Regional Offices	Other Hospitals	Other Clinics & Services
Director of Medical & Health Services		1																1	1
Deputy Director of Medical & Health Services		2																2	2
Assistant Director of Medical & Health Services		4																8	6
Consultant (Incl. Dental)			10	23	15	2	2	2	1	1		6	3					77	69
Principal Medical & Health Officer		3	2	1	1		1	1										12	7
Senior Medical & Health Officer/ Medical & Health Officer		88	98	151	115	9	36	16	14	11	35		35	11	78	334		1034	957
*Principal Nursing Officer		1																1	2
*Nursing Staff (Excl. Midwifery Staff)		4	1138	1632	999	260	549	501	28	40	558	156	15	237	1011	203		7198	6363
*Midwife/Student Midwife (Incl. Senior Midwife)			12		19					129								363	321
Senior Inoculator/Inoculator			4	5	4		2											125	87
Senior Dietitian/Dietitian						3												20	19
Principal Dental Officer/Senior Dental Officer/Dental Officer/ Assistant Dental Officer			2	4	3	1	3	1										117	107
Tutor Dental Therapist/Dental Therapist/Student Dental Therapist																		115	113

TABLE 1 (Cont'd)

Grade	Zone	Headquarters	Queen Mary Hospital	Queen Elizabeth Hospital	Princess Margaret Hospital	Kwai Chung Hospital	Lai Chi Kok Hospital	Kowloon Hospital	Castle Peak Hospital	Mental Health Centres	Tsuan Yuk Hospital	Prince of Wales Hospital	Dental Service	TB & Chest Service	Regional Offices	Other Hospitals	Other Clinics & Services	Total	Strength on 31.3.81
Dental Hygienist/Student Hygienist													12					12	8
Dental Inspector													2					2	1
*Senior Dental Surgery Assistant/ Dental Surgery Assistant		3	4	3	1	3		3					111				6	134	129
Seni or Dental Technologist/Dental Technologist													3					3	3
Dental Technician I/Dental Technician II/Student Dental Technician		1	1	1									53					56	49
Chief Medical Technologist/Seni or Medical Technologist/Medical Technologist/Medical Laboratory Technician I/Medical Laboratory Technician II/Student Medical Laboratory Technician		17	64	61	3	3											138	296	264
Assistant Bi ochemist																			1
Principal Medical Social Worker/ Seni or Medical Social Worker/ Social Work Officer/Assistant Social Work Officer		3	13	17	15	2	1	11	9	11	2			15			49	148	124
Superintendent Occupational Therapist/Seni or Occupational Therapist/Occupational Therapist I/ Occupational Therapy Assistant			5	8	12	14	6	14	45	12							21	137	126

TABLE 1 (Cont'd)

Grade	Zone	Headquarters	Queen Mary Hospital	Queen Elizabeth Hospital	Princess Margaret Hospital	Kwai Chung Hospital	Lai Chi Kok Hospital	Kowloon Hospital	Castle Peak Hospital	Mental Health Centres	Tsuan Yuk Hospital	Prince of Wales Hospital	Dental Service	TB & Chest Service	Regional Offices	Other Hospitals	Other Clinics & Services	Total	Strength on 31.3.81
*Superintendent Physiotherapist/ Seni or Physiotherapist/ Physiotherapist I/Physiotherapist II/ Student Physiotherapist			15	50	20	1	1	16										150	116
*Chief Pharmacist/Seni or Pharmacist/ Pharmacist/Chief Dispenser/Seni or Dispenser/Dispenser/Student Dispenser			23	25	22	4	1	7	3	4	2	20		8		6	305	430	302
*Seni or Physicist/Physicist			3	6														9	9
Superintendent Radi ographer/Seni or Radi ographer/Radi ographer/Student Radi ographer			36	66	23			4	1			21					31	184	170
Seni or Mould Laboratory Technician/ Mould Laboratory Technician/Student Mould Laboratory Technician			3	7								5						15	13
Seni or X-ray Assistant/X-ray Assistant																		35	20
X-ray Mechanic			4	2														6	3
Admin. Officer Staff Grade 'B'/'C'/ Seni or Admin. Officer/Admin. Officer		5															1	6	7