



# DAILY INFORMATION BULLETIN

ISSUED BY GOVERNMENT INFORMATION SERVICES  
BEACONSFIELD HOUSE, HONG KONG. TEL.: 842 8777

THURSDAY, OCTOBER 21, 1993

<u>CONTENTS</u>	<u>PAGE NO.</u>
CREDIBLE LEGISLATURE FUNDAMENTAL FOR HK: GOVERNOR .....	1
MORE VEGETABLES INTERCEPTED .....	2
VIEWS TO BE SOUGHT ON DISTRICT BOARD ELECTORAL BOUNDARIES ...	2
15TH ROUND OF ELECTION TALKS SCHEDULED .....	5
CONSUMER PRICE INDICES FOR SEPTEMBER .....	6
WORKING ENVIRONMENT IMPORTANT TO EMPLOYEES' HEALTH .....	12
ARTS DEVELOPMENT COUNCIL WORKING GROUP GOES FULL STEAM AHEAD	13
EDUCATION COMMISSION SETS UP WORKING GROUPS .....	14
EMPLOYMENT OF DISABLED URGED .....	15
TOGETHER WE DEVELOP OUR ABILITIES .....	16
HK CUSTOMS RETURNS LOST CARS TO U.S. CUSTOMS .....	18
LAST REPORT ON BEACH WATER QUALITY GRADING THIS YEAR .....	19
CLOSURE OF UNAUTHORISED STRUCTURE SOUGHT .....	22
56 LEGCO MEMBERS DEBATED POLICY ADDRESS .....	22
HONG KONG GOVERNMENT EXCHANGE FUND MONEY MARKET OPERATIONS ..	23

THURSDAY, OCTOBER 21, 1993

- 1 -

CREDIBLE LEGISLATURE FUNDAMENTAL FOR HK: GOVERNOR

\* \* \* \* \*

A CREDIBLE LEGISLATURE IS FUNDAMENTAL TO THE CONTINUATION OF THE RULE OF LAW AND THE WAY OF LIFE OF HONG KONG, THE GOVERNOR, THE RT. HON. CHRISTOPHER PATTEN, SAID TODAY (THURSDAY).

"NOT A WHOLLY DIRECTLY ELECTED LEGISLATURE, NOT NECESSARILY A LEGISLATURE MODELLED PRECISELY ON THE WESTMINSTER MODEL.

"BUT A LEGISLATURE TO WHICH THE ELECTIONS ARE CLEAN, NOT COMPROMISED; ELECTIONS IN WHICH PEOPLE HAVE A GENUINE CHOICE," HE SAID.

HE WAS ADDRESSING A JOINT LUNCHEON BY THE FRENCH, GERMAN AND DUTCH BUSINESS ASSOCIATIONS.

MR PATTEN SAID IF ELECTIONS WERE NOT OPEN AND FAIR, IF THE ELECTIONS TO THE LEGISLATURE WERE COMPROMISED, IF ELECTIONS WERE ARRANGED IN A MANNER WHICH WOULD TILT THE RESULT IN ONE DIRECTION OR ANOTHER, AND IF THE PEOPLE OF A GENUINE FREE CHOICE WERE DEPRIVED OF AT THE BALLOT BOX, THEN:

"YOU SET OFF A PROCESS THAT COULD ULTIMATELY UNRAVEL THE ENTIRE RULE OF LAW IN HONG KONG."

IF HONG KONG IS TO CONTINUE TO BE THE ATTRACTIVE LOCATION FOR INTERNATIONAL INVESTORS AS WELL AS A DECENT PLACE TO LIVE IN, IT MUST HAVE VIGOROUS, HEALTHY INSTITUTIONS AS THE JOINT DECLARATION ENVISAGED.

"AND THAT MEANS A VIGOROUS - DARE I SAY IT, OCCASIONALLY TIRESOME - LEGISLATURE, IT MEANS A SOUND, CLEAN GOVERNMENT, AND IT MEANS A FREE, INQUISITIVE PRESS," HE ADDED.

HE POINTED OUT THAT ALL THESE THINGS STOOD TOGETHER. THEY WERE THE THINGS THAT HAD HELPED TO MAKE THIS PLACE A SERIOUSLY SUCCESSFUL BUSINESS LOCATION.

ON THE WORLD TRADING ORDER, MR PATTEN SAID HONG KONG LIVED BY THE GATT RULES. HONG KONG AS MUCH AS ANYONE HAD A VITAL INTEREST IN A SUCCESSFUL CONCLUSION TO THE URUGUAY ROUND.

HE DESCRIBED AS SPECIOUS THE ARGUMENT THAT THE ONLY WAY TO SAFEGUARD EUROPEAN SOCIAL MARKET ECONOMIES WAS TO APPLY A BIT OF PROTECTION.

NOTING THAT THE ARGUMENT WOULD DO EUROPE ABSOLUTELY NO GOOD, MR PATTEN SAID EUROPE ABOVE ALL SHOULD BE IDEOLOGICALLY FREE TRADING IN THE YEARS AHEAD.

HE HOPES THAT EUROPE AND ASIA CAN WORK TOGETHER TO LEARN FROM ONE ANOTHER.

- - - - 0 - - - -

/2 .....

MORE VEGETABLES INTERCEPTED

\* \* \* \* \*

DEPARTMENT OF HEALTH'S FOOD INSPECTORS AT MAN KAM TO BORDER CHECKPOINT YESTERDAY (WEDNESDAY) INTERCEPTED A LORRY OF VEGETABLES COMING FROM A SUSPECTED FARM, A SPOKESMAN FOR THE DEPARTMENT SAID TODAY.

THE SPOKESMAN SAID THE VEGETABLES SEIZED, CONSISTING OF CHINESE FLOWERING CABBAGE (CHOI SUM), CHINESE WHITE CABBAGE AND CHINESE KALE WEIGHED 3,000 KILOGRAMS, WERE DESTROYED TODAY.

THE SPOKESMAN URGED MEMBERS OF THE PUBLIC TO TAKE THE FOLLOWING PRECAUTIONARY MEASURES TO PREVENT FOOD POISONING BY PESTICIDE-CONTAMINATED VEGETABLES:

- \* DON'T BUY VEGETABLES WITH AN OBVIOUS STRANGE SMELL;
- \* WASH WELL BEFORE COOKING;
- \* DIP VEGETABLES INTO CLEAN WATER FOR SOME TIME TO ALLOW PESTICIDES TO LEACH OUT;
- \* BLANCH IN BOILING WATER AND POUR AWAY THE WATER USED FOR BLANCHING AS IT MAY CONTAIN DISSOLVED PESTICIDES; AND
- \* COOK THOROUGHLY BEFORE CONSUMPTION.

- - - - 0 - - - -

VIEWS TO BE SOUGHT ON DISTRICT BOARD ELECTORAL BOUNDARIES

\* \* \* \* \*

MEMBERS OF THE PUBLIC ARE INVITED TO GIVE THEIR VIEWS ON THE PROVISIONAL CONSTITUENCY BOUNDARIES DRAWN UP BY THE BOUNDARY AND ELECTION COMMISSION FOR THE DISTRICT BOARD ELECTIONS NEXT YEAR.

ANNOUNCING DETAILS OF A PUBLIC CONSULTATION EXERCISE ON ITS RECOMMENDATIONS TODAY (THURSDAY), THE CHAIRMAN OF THE COMMISSION, MR JUSTICE WOO KWOK-HING, SAID REPRESENTATIONS SHOULD BE SENT TO THE COMMISSION SECRETARIAT BETWEEN OCTOBER 29 AND NOVEMBER 27.

"THE COMMISSION WILL REPORT TO THE GOVERNOR BY THE END OF THE YEAR AFTER THE CONCLUSION OF THE CONSULTATION EXERCISE," MR JUSTICE WOO SAID.

A NOTICE OF THE ARRANGEMENTS FOR PUBLIC CONSULTATION WILL BE GAZETTED NEXT FRIDAY (OCTOBER 29).

THE THREE-MEMBER COMMISSION WAS ESTABLISHED IN JULY THIS YEAR TO TAKE CHARGE OF ELECTORAL MATTERS INCLUDING THE DELINEATION OF GEOGRAPHICAL CONSTITUENCY BOUNDARIES.

THE OTHER TWO MEMBERS OF THE COMMISSION ARE MR ROBERT GEORGE KOTEWALL QC AND PROFESSOR LEUNG CHI-KEUNG.

"THIS IS THE FIRST TIME IN HONG KONG THAT A POPULATION QUOTA IS APPLIED IN THE DEMARCATION OF ELECTORAL BOUNDARIES," MR JUSTICE WOO SAID.

"WHILST THIS IS THE MOST IMPORTANT CONSIDERATION TAKEN BY THE COMMISSION, DUE REGARD HAS ALSO TO BE MADE TO OTHER CONSIDERATIONS AS APPROPRIATE, SUCH AS COMMUNITY IDENTITIES, LOCAL TIES AND THE PHYSICAL FEATURES, ACCESSIBILITY AND DEVELOPMENT OF THE AREAS CONCERNED.

"IN MANY CASES, THIS MEANS HAVING TO STRIKE A FINE BALANCE OF ALL THE RELEVANT FACTORS."

IN DRAWING UP ITS RECOMMENDATIONS, MR JUSTICE WOO SAID THE NUMBER OF CONSTITUENCIES IN EACH DISTRICT WAS DETERMINED BY REFERENCE TO THE PROJECTED DISTRICT POPULATION FOR NEXT YEAR AND THE POPULATION QUOTA.

"THE CONSTITUENCY BOUNDARIES IN EACH DISTRICT ARE THEN DEMARCATED AND THE CIRCUMSTANCES EXAMINED IN DETAIL TO ASCERTAIN THE NUMBER OF CONSTITUENCIES JUSTIFIED FOR THE DISTRICT."

MAPS SHOWING THE DELINEATION OF THE PROPOSED CONSTITUENCY AREAS AND THE DESCRIPTION TABLES OF THEIR BOUNDARIES WILL BE AVAILABLE FOR PUBLIC INSPECTION FROM OCTOBER 29 AT OVER 400 LOCATIONS IN THE TERRITORY. THEY ARE:

- (1) REGISTRATION AND ELECTORAL OFFICE ON THE 10TH FLOOR IN HARBOUR CENTRE AT 25 HARBOUR ROAD, WAN CHAI;
- (2) THE CITY AND NEW TERRITORIES ADMINISTRATION HEADQUARTERS AT SOUTHOEN CENTRE, 130 HENNESSY ROAD; DISTRICT OFFICES AND SUB-OFFICES;
- (3) ESTATE OFFICES OF ALL PUBLIC HOUSING ESTATES;
- (4) ALL URBAN COUNCIL AND REGIONAL COUNCIL PUBLIC LIBRARIES;
- (5) ALL POST OFFICES; AND
- (6) THE GOVERNMENT PUBLICATIONS SALES CENTRE ON THE GROUND FLOOR IN FRENCH MISSION BUILDING AT 1 BATTERY PATH, CENTRAL.

WRITTEN REPRESENTATIONS WITH NAME AND ADDRESS SUPPLIED SHOULD BE SENT ON OR BEFORE SATURDAY, NOVEMBER 27 TO THE BOUNDARY AND ELECTION COMMISSION SECRETARIAT ON THE 10TH FLOOR IN HARBOUR CENTRE AT 25 HARBOUR ROAD, WAN CHAI, HONG KONG.

MR JUSTICE WOO EXPLAINED THAT THE BOUNDARY AND ELECTION COMMISSION ORDINANCE ALLOWED ONLY 30 DAYS FOR REPRESENTATIONS AND THAT SUBMISSIONS RECEIVED AFTER NOVEMBER 27 WOULD NOT BE CONSIDERED.

MEMBERS OF THE PUBLIC MAY ALSO MAKE THEIR VIEWS KNOWN TO THE COMMISSION DURING TWO PUBLIC MEETINGS TO BE HELD IN THE CULTURAL ACTIVITIES HALL ON THE SECOND FLOOR OF SHA TIN TOWN HALL AT 1 YUEN WO ROAD, SHA TIN ON NOVEMBER 23 AND 24.

THURSDAY, OCTOBER 21, 1993

- 4 -

THE MEETING SCHEDULES WILL BE AS FOLLOWS:-

DATE: TUESDAY NOVEMBER 23

URBAN DISTRICTS

-----  
TIME

9.15 AM TO 9.45 AM	CENTRAL & WESTERN
9.45 AM TO 10.15 AM	WAN CHAI
10.15 AM TO 10.45 AM	EASTERN
11 AM TO 11.30 AM	SOUTHERN
11.30 AM TO NOON	YAU TSIM MONG
NOON TO 1 PM	GENERAL ASPECTS
2 PM TO 2.30 PM	SHAM SHUI PO
2.30 PM TO 3 PM	KOWLOON CITY
3 PM TO 3.30 PM	WONG TAI SIN
3.30 PM TO 4 PM	KWUN TONG
4.15 PM TO 5.45 PM	GENERAL ASPECTS

/DATE .....

THURSDAY, OCTOBER 21, 1993

- 5 -

DATE: WEDNESDAY NOVEMBER 24

NEW TERRITORIES DISTRICTS

-----  
TIME  
-----

9.15 AM TO 9.45 AM	TSUEN WAN
9.45 AM TO 10.15 AM	TUEN MUN
10.15 AM TO 10.45 AM	YUEN LONG
11 AM TO 11.30 AM	NORTH
11.30 AM TO NOON	TAI PO
NOON TO 1 PM	GENERAL ASPECTS
2 PM TO 2.30 PM	SAI KUNG
2.30 PM TO 3 PM	SHA TIN
3 PM TO 3.30 PM	KWAI TSING
3.30 PM TO 4 PM	ISLANDS
4.15 PM TO 5.45 PM	GENERAL ASPECTS

ENQUIRIES CAN BE MADE WITH THE BOUNDARY AND ELECTION COMMISSION SECRETARIAT ON TEL 827 7144.

- - - - 0 - - - -

15TH ROUND OF ELECTION TALKS SCHEDULED

\* \* \* \* \*

"THE BRITISH SIDE AND THE CHINESE SIDE HAVE AGREED THAT THE BRITISH GOVERNMENT REPRESENTATIVE, SIR ROBIN MCLAREN, BRITISH AMBASSADOR TO CHINA, AND THE CHINESE GOVERNMENT REPRESENTATIVE, MR JIANG ENZHU, VICE FOREIGN MINISTER OF THE PEOPLE'S REPUBLIC OF CHINA, WILL HOLD THEIR FIFTEENTH ROUND OF TALKS IN BEIJING ON 27 AND 28 OCTOBER 1993 ON THE ARRANGEMENTS FOR THE 1994/95 ELECTIONS IN HONG KONG IN ACCORDANCE WITH THE SINO-BRITISH JOINT DECLARATION, THE PRINCIPLE OF CONVERGENCE WITH THE BASIC LAW AND THE RELEVANT AGREEMENTS AND UNDERSTANDINGS REACHED BETWEEN BRITAIN AND CHINA."

- - - - 0 - - - -

## CONSUMER PRICE INDICES FOR SEPTEMBER

\* \* \* \* \*

THE CONSUMER PRICE INDEX (A) IN SEPTEMBER WAS 7.9% HIGHER THAN IN THE SAME MONTH LAST YEAR, ACCORDING TO FIGURES RELEASED TODAY (THURSDAY) BY THE CENSUS AND STATISTICS DEPARTMENT.

A GOVERNMENT SPOKESMAN SAID THIS WAS APPRECIABLY LOWER THAN THE CORRESPONDING INCREASE OF 8.5% IN AUGUST AND WAS THE LOWEST SINCE APRIL THIS YEAR.

"THE SLOWER INCREASE IN THE CPI(A) IN SEPTEMBER THAN IN AUGUST WAS MAINLY DUE TO MORE MODERATE RISE IN THE PRICES OF FRESH VEGETABLES AND IN RENT FOR HOUSING. THE RATES OF INCREASE IN THE PRICES OF MANY OTHER COMPONENTS IN THE CPI REMAINED GENERALLY STABLE," THE SPOKESMAN SAID.

HOWEVER, THERE WERE INDICATIONS THAT, AFFECTED BY THE TYPHOON IN LATE SEPTEMBER, THE PRICES OF FRESH VEGETABLES HAD SURGED SIGNIFICANTLY IN EARLY OCTOBER.

"TAKING THE FIRST NINE MONTHS TOGETHER, THE YEAR-ON-YEAR RATE OF INCREASE IN THE CPI(A) AVERAGED AT 8.4%, AND WAS A FRACTION OF A PERCENTAGE POINT LOWER THAN THE REVISED FORECAST INFLATION RATE OF 9.0% FOR 1993 AS A WHOLE," HE SAID.

THE CPI(B) AND THE HANG SENG CPI WERE HIGHER BY 8.1% AND 9.2% RESPECTIVELY IN SEPTEMBER THAN IN THE SAME MONTH LAST YEAR. THE CORRESPONDING INCREASES IN AUGUST WERE 8.5% AND 9.2%.

THE COMPOSITE CPI, WHICH IS COMPILED BASED ON THE COMBINED EXPENDITURE PATTERN OF HOUSEHOLDS COVERED BY THE THREE CPIS, SHOWED AN INCREASE OF 8.3% IN SEPTEMBER OVER THE SAME MONTH LAST YEAR. THIS WAS SLOWER THAN THE CORRESPONDING INCREASE OF 8.7% IN AUGUST.

COMPARING SEPTEMBER 1993 WITH SEPTEMBER 1992, RELATIVELY SLOWER INCREASES IN PRICES WERE RECORDED FOR DURABLE GOODS (2.6% IN BOTH CPI(A) AND CPI(B)); FOOD EXCLUDING MEALS AT RESTAURANTS (3.6% IN THE CPI(A) AND 3.9% IN THE CPI(B)); FUEL AND LIGHT (3.9% IN BOTH CPI'S); MISCELLANEOUS GOODS (6.9% IN THE CPI(A) AND 6.4% IN THE CPI(B)); AND CLOTHING AND FOOTWEAR (7.2% IN BOTH CPI'S).

ON THE OTHER HAND, RELATIVELY FASTER INCREASES IN PRICES WERE RECORDED FOR HOUSING (11.5% IN BOTH CPI(A) AND CPI(B)); ALCOHOLIC DRINKS AND TOBACCO (10.7% IN THE CPI(A) AND 9.5% IN THE CPI(B)); AND MISCELLANEOUS SERVICES (9.9% AND 9.6%).

AS FOR MEALS AT RESTAURANTS AND TRANSPORT, THEIR CORRESPONDING INCREASES WERE 8.3% AND 8.6% IN THE CPI(A) AND 8.3% AND 7.8% IN THE CPI(B).

COMPARING SEPTEMBER 1993 WITH AUGUST 1993, THE CPI(A) AND CPI(B) INCREASED BY 1.6% AND 1.3% RESPECTIVELY. HOWEVER, THIS COMPARISON COULD HAVE BEEN AFFECTED BY SEASONAL FACTORS.

/FOR THE .....

FOR THE THREE MONTHS ENDING SEPTEMBER 1993, THE CPI(A) WAS, ON AVERAGE, HIGHER BY 8.2% THAN IN THE THREE MONTHS ENDING SEPTEMBER 1992. THE CORRESPONDING INCREASE FOR THE CPI(B) WAS 8.4%.

FOR THE PERIOD FROM JANUARY TO SEPTEMBER 1993, THE CPI(A) AND CPI(B) WERE, ON AVERAGE, HIGHER BY 8.4% AND 8.8% RESPECTIVELY THAN IN THE CORRESPONDING PERIOD IN 1992.

FOR THE 12 MONTHS ENDING SEPTEMBER 1993, THE CPI(A) AND CPI(B) WERE, ON AVERAGE, HIGHER BY 8.7% AND 9.0% RESPECTIVELY THAN IN THE PRECEDING 12-MONTH PERIOD.

SEASONALLY ADJUSTED SERIES ARE ALSO AVAILABLE FOR THE CPI'S. THE DESEASONALISED CPI(A) AND CPI(B) INCREASED AT AN AVERAGE RATE OF 0.5% AND 0.6% RESPECTIVELY PER MONTH DURING THE THREE MONTHS ENDING SEPTEMBER 1993.

THE CONSUMER PRICE INDEX REPORT  
-----

MORE DETAILS ARE GIVEN IN THE "CONSUMER PRICE INDEX REPORT" FOR SEPTEMBER 1993, WHICH IS AVAILABLE AT \$12 A COPY FROM:

- \* THE GOVERNMENT PUBLICATIONS CENTRE, GENERAL POST OFFICE BUILDING, GROUND FLOOR, CONNAUGHT PLACE, HONG KONG; AND
- \* THE PUBLICATIONS SECTION OF THE CENSUS AND STATISTICS DEPARTMENT, 19TH FLOOR, WANCHAI TOWER, 12 HARBOUR ROAD, WAN CHAI, HONG KONG.

FOR LOCAL AND OVERSEAS MAILINGS, CONTACT SHOULD BE MADE WITH THE INFORMATION SERVICES DEPARTMENT, FRENCH MISSION BUILDING, 1 BATTERY PATH, HONG KONG.

FOR ENQUIRIES ABOUT THE INDICES, PLEASE TELEPHONE THE CONSUMER PRICE INDEX SECTION OF THE CENSUS AND STATISTICS DEPARTMENT ON 805 6403. DETAILS REGARDING THE HANG SENG CPI ARE CONTAINED IN THE HANG SENG CPI REPORT ISSUED BY THE ECONOMIC RESEARCH DEPARTMENT OF HANG SENG BANK LTD.

-----

Table 1 Consumer Price Indices and Rates of Increase for September 1993  
(Oct. 89 - Sep. 90 = 100)

Component	CPI(A)		CPI(B)		Hong Kong CPI		Composite CPI	
	Index for Sep 93	% change over Sep 92	Index for Sep 93	% change over Sep 92	Index for Sep 93	% change over Sep 92	Index for Sep 93	% change over Sep 92
Food	134.9	+6.0	136.2	+6.5	135.7	+7.5	135.5	+6.5
Meals bought away from home	142.7	+8.3	142.8	+8.3	140.0	+9.4	142.1	+8.5
Food, excluding meals bought away from home	127.0	+3.6	127.1	+3.9	128.5	+4.2	127.3	+3.8
Housing	152.0	+11.5	152.1	+11.5	153.9	+13.6	152.6	+12.2
Fuel and light	121.0	+3.9	120.3	+3.9	120.0	+3.8	120.5	+3.9
Alcoholic drinks and tobacco	179.1	+10.7	168.7	+9.5	164.0	+8.7	173.3	+10.0
Clothing and footwear	126.6	+7.2	127.9	+7.2	136.0	+8.4	130.3	+7.6
Durable goods	109.9	+2.6	109.4	+2.6	114.1	+3.2	110.9	+2.7
Miscellaneous goods	124.2	+6.9	122.5	+6.4	121.5	+6.1	122.8	+6.5
Transport	137.3	+8.6	136.2	+7.8	136.0	+6.5	136.6	+7.7
Miscellaneous services	149.0	+9.9	144.7	+9.6	137.3	+8.5	143.8	+9.3
All items	138.4	+7.9	138.3	+8.1	139.2	+9.2	138.6	+8.3

The 1989/90-based consumer price indices are based on the expenditure patterns derived from the 1989/90 Household Expenditure Survey. The CPI(A) is based on the expenditure pattern of about 50% of urban households in Hong Kong, which had an average monthly expenditure of \$2,500-\$9,999 in 1989/90. The CPI(B) is based on the expenditure pattern of the next 30% of urban households, which had an average monthly expenditure of \$10,000-\$17,499 in the same period. The Hong Kong CPI is based on the expenditure pattern of the next 10% of urban households, which had an average monthly expenditure of \$17,500-\$37,499 in 1989/90.

Whereas the CPI(A), CPI(B) and Hong Kong CPI are based on the expenditure patterns of groups of households with different magnitudes of household expenditure, the Composite CPI is compiled based on the expenditure pattern of all these households taken together. Thus, while the CPI(A), CPI(B) and Hong Kong CPI show the impact of consumer price changes on different groups of households, the Composite CPI shows the impact of consumer price changes on the household sector generally.

Table 2 Consumer Price Indices for January 1991 - September 1993  
(Oct. 89 - Sep. 90 = 100)

<u>Year/month</u>	<u>CPI(A)</u>	<u>CPI(B)</u>	<u>Hang Seng CPI</u>	<u>Composite CPI</u>
1991 January	108.3	108.4	108.6	108.4
February	110.3	110.1	110.2	110.2
March	111.9	111.1	110.7	111.3
April	113.9	113.0	112.0	113.1
May	114.0	113.6	113.4	113.7
June	114.6	114.1	113.9	114.2
July	115.4	114.8	113.9	114.8
August	116.0	115.3	114.6	115.4
September	116.8	116.1	115.8	116.3
October	117.2	116.8	117.4	117.1
November	117.7	117.6	118.7	117.9
December	118.1	118.3	118.5	118.3
1992 January	119.7	119.3	119.4	119.5
February	121.8	121.2	121.0	121.4
March	122.5	121.9	121.8	122.1
April	124.0	123.4	122.9	123.5
May	124.0	123.8	124.2	124.0
June	125.3	125.1	125.2	125.2
July	125.5	125.4	125.4	125.4
August	125.6	125.9	125.8	125.8
September	128.3	127.9	127.5	128.0
October	128.4	128.4	128.6	128.5
November	128.5	129.0	129.9	129.0
December	129.3	129.8	130.0	129.7
1993 January	131.8	131.6	131.5	131.7
February	132.4	132.2	132.0	132.2
March	132.0	132.2	133.1	132.4
April	133.5	133.9	134.5	133.9
May	134.5	134.8	136.3	135.1
June	136.0	135.9	137.1	136.3
July	135.3	136.1	136.9	136.2
August	136.3	136.5	137.4	136.7
September	138.4	138.3	139.2	138.6

Chart 1 Year-on-year Rates of Increase in CPI(A)

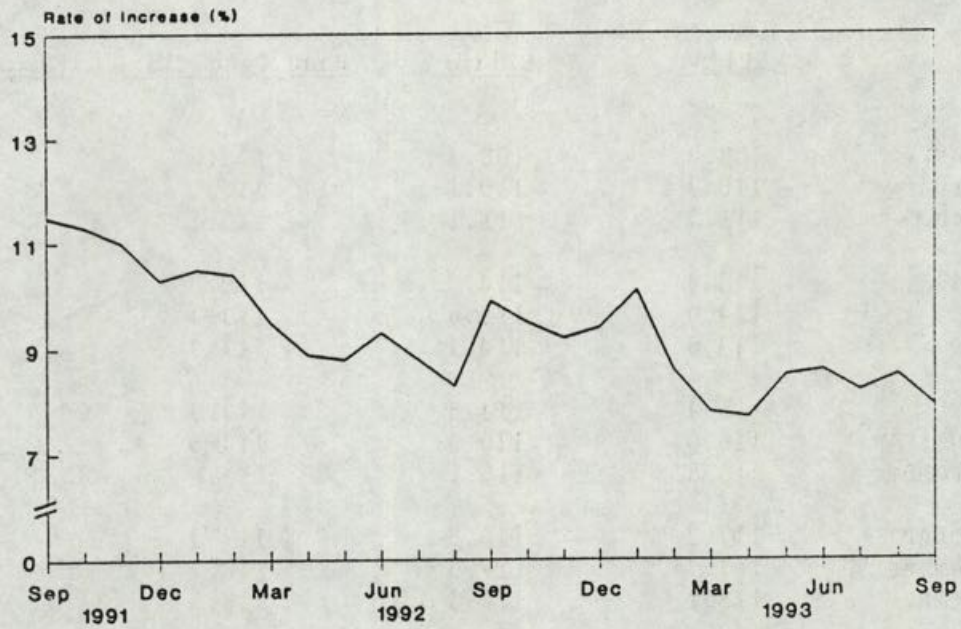
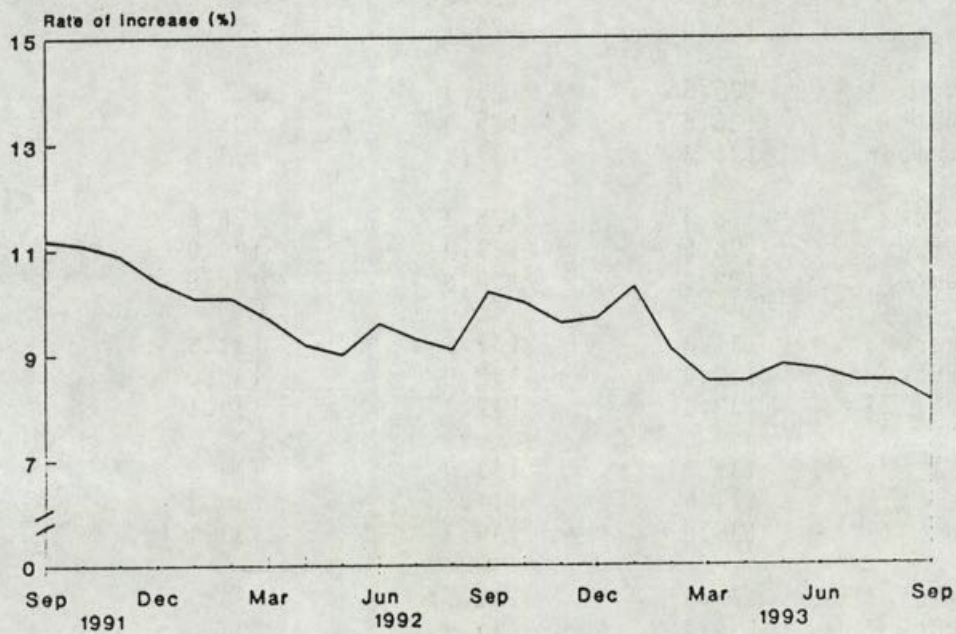


Chart 2 Year-on-year Rates of Increase in CPI(B)



/CHART 3 .....

Chart 3 Year-on-year Rates of Increase in Hang Seng CPI

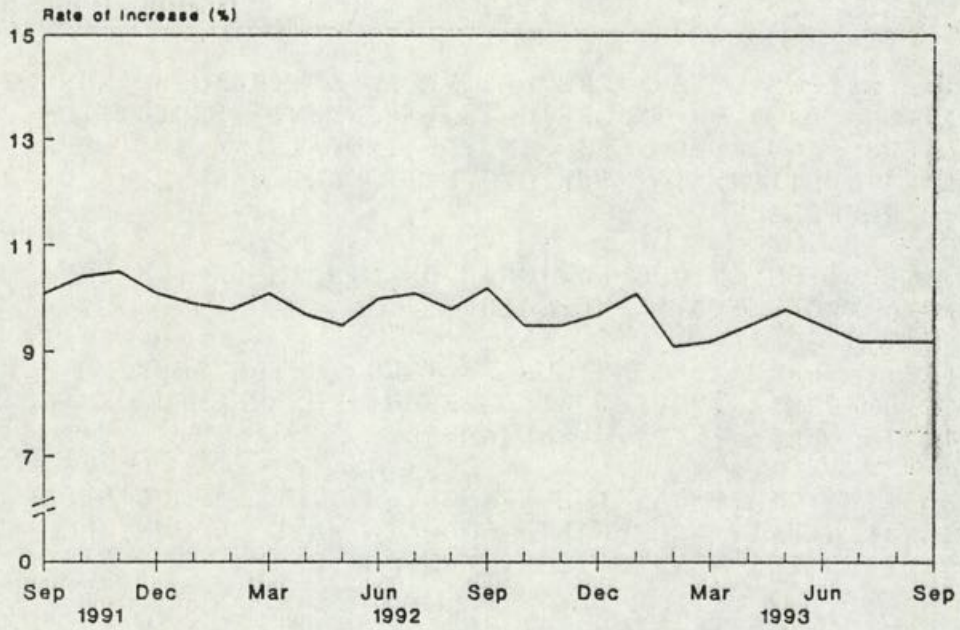
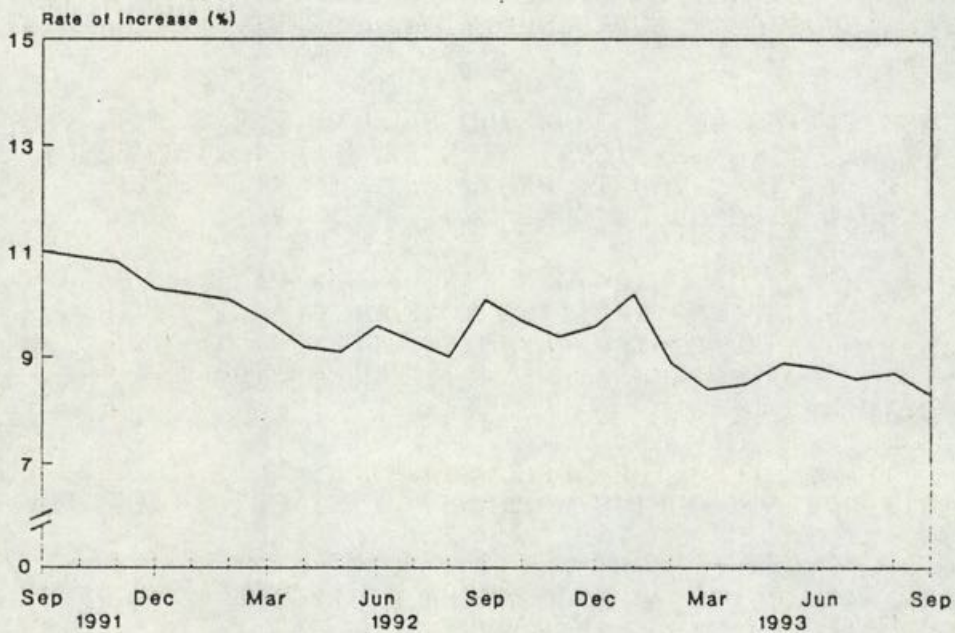


Chart 4 Year-on-year Rates of Increase in Composite CPI



THURSDAY, OCTOBER 21, 1993

- 12 -

WORKING ENVIRONMENT IMPORTANT TO EMPLOYEES' HEALTH

\* \* \* \* \*

THE WORKING ENVIRONMENT IS IMPORTANT TO AND WILL DIRECTLY AFFECT EMPLOYEES' HEALTH AND EFFICIENCY IN ANY KIND OF TRADE, THE COMMISSIONER FOR LABOUR, MRS KATHERINE FOK, SAID THIS (THURSDAY) MORNING.

IN THE WELCOMING REMARKS DELIVERED AT THE OPENING CEREMONY OF THE "OCCUPATIONAL HEALTH IN OFFICE ENVIRONMENT" EXHIBITION, MRS FOK SAID: "EMPLOYERS AND EMPLOYEES IN THE INDUSTRIAL SECTOR ARE USED TO PAY SPECIAL ATTENTION TO THE OCCUPATIONAL HEALTH AND SAFETY IN FACTORIES AND WORKPLACES."

"THE QUESTION OF OCCUPATIONAL HEALTH IN OFFICE ENVIRONMENT IS GENERALLY BEING NEGLECTED," SHE SAID.

"IN FACT, THERE ARE VARIOUS FACTORS IN THE OFFICE ENVIRONMENT, WHICH IF NOT PROPERLY HANDLED, WILL AFFECT THE HEALTH OF THE EMPLOYEES AND THEIR WORKING EFFICIENCY," SHE ADDED.

NOTING THAT THIS WAS THE REASON WHY THE LABOUR DEPARTMENT AND THE OCCUPATIONAL SAFETY AND HEALTH COUNCIL HAVE CHOSEN SUCH THEME AND JOINTLY ORGANISED THE EXHIBITION, MRS FOK SAID:

"THE EXHIBITION IS AIMED AT AROUSING PUBLIC AWARENESS ON THE POTENTIAL HEALTH HAZARDS IN OFFICE ENVIRONMENT AND PROVIDING INFORMATION ON HOW TO MAINTAIN A HEALTHY WORKING ENVIRONMENT AND IMPROVE WORKING EFFICIENCY."

OTHER OFFICIATING GUESTS INCLUDE LEGISLATIVE COUNCILLOR, DR LEONG CHE-HUNG; THE ACTING DIRECTOR OF HEALTH, DR MARGARET CHAN AND THE EXECUTIVE DIRECTOR OF THE OCCUPATIONAL SAFETY AND HEALTH COUNCIL, MR YIP YUK-LUN.

THE EXHIBITION WHICH IS BEING HELD ON THE GROUND FLOOR OF THE NEW WORLD PLAZA, TSIM SHA TSUI, WILL BE OPEN TO THE PUBLIC FREE OF CHARGE FROM 1 PM TO 7 PM TODAY, FROM 10 AM TO 7 PM BETWEEN OCTOBER 22 AND 26, AND END AT 2 PM ON OCTOBER 27.

AT THE EXHIBITION, VISITORS CAN GAIN A BETTER UNDERSTANDING OF SOME OF THE HEALTH HAZARDS RELATING TO POOR OFFICE ENVIRONMENT AND THE BENEFITS OF HAVING A HEALTHY WORKING ENVIRONMENT THROUGH PHOTOGRAPHS, DISPLAYS, VIDEO SHOWS AND A FULL-SIZE DEMONSTRATION OF A TYPICAL OFFICE WORK STATION.

THERE WILL ALSO BE DEMONSTRATIONS OF SIMPLE RELAXATION EXERCISES SUITABLE FOR OFFICE WORKERS TO TRY OUT IN THEIR OWN OFFICE ENVIRONMENT.

ANOTHER ATTRACTION IS A COMPUTER QUIZ GAME TO ENHANCE VISITORS' UNDERSTANDING ON A HEALTHY OFFICE ENVIRONMENT.

- - - - - 0 - - - - -

THURSDAY, OCTOBER 21, 1993

- 13 -

ARTS DEVELOPMENT COUNCIL WORKING GROUP  
GOES FULL STEAM AHEAD

\* \* \* \* \*

THE HONG KONG ARTS DEVELOPMENT COUNCIL WORKING GROUP IS MOVING QUICKLY TO GET ON WITH ITS TASK TOWARDS THE SETTING UP OF A STATUTORY COUNCIL TO PLAN AND PROMOTE THE BROAD DEVELOPMENT AND APPRECIATION OF AND PARTICIPATION IN THE ARTS.

THIS IS WITH A VIEW TO IMPROVING THE QUALITY OF LIFE OF THE WHOLE COMMUNITY, PLACING PARTICULAR EMPHASIS ON THE PERFORMING, VISUAL AND LITERARY ARTS.

THE WORKING GROUP IS TASKED WITH DRAWING UP RECOMMENDATIONS REGARDING THE MEMBERSHIP GUIDELINES, TERMS OF REFERENCE, FUNCTIONS, OBJECTIVES, STRUCTURE, STAFFING AND MODUS OPERANDI THAT THE HONG KONG ARTS DEVELOPMENT COUNCIL WILL NEED TO ENABLE IT TO CARRY OUT ITS MISSION IN THE MOST APPROPRIATE MANNER FOR HONG KONG.

THE WORKING GROUP WILL TAKE INTO ACCOUNT THE VIEWS AND COMMENTS OF THE ARTS COMMUNITY AND OTHER INTERESTED PARTIES IN DRAWING UP ITS PLANS.

THE WORKING GROUP WILL ALSO HAVE TO PREPARE FOR THE HONG KONG ARTS DEVELOPMENT COUNCIL TO TAKE OVER THE FUNDING AND ACTIVITIES OF THE COUNCIL FOR THE PERFORMING ARTS.

THE WORKING GROUP HAS ALREADY HELD TWO MEETINGS SINCE ITS INAUGURATION ON OCTOBER 8, CHAIRMAN OF THE WORKING GROUP, SIR JOSEPH HOTUNG SAID.

TO HELP THE WORKING GROUP GET ON WITH ITS WORK, FIVE COMMITTEES HAVE BEEN ESTABLISHED.

THESE ARE THE POLICY COMMITTEE, MANAGEMENT AND FINANCE COMMITTEE, TRANSITIONAL ARRANGEMENTS COMMITTEE, LEGISLATION COMMITTEE AND COMMUNITY LIAISON COMMITTEE.

MORE COMMITTEES MIGHT BE REQUIRED LATER TO LOOK AT OTHER IMPORTANT MATTERS SUCH AS EDUCATION AND INDIVIDUAL ART FORMS AFTER THE BROAD POLICY OBJECTIVES HAVE BEEN WORKED OUT, SIR JOSEPH SAID.

THE TERMS OF REFERENCE FOR THE COMMITTEES ARE BEING DRAWN UP.

WHILE MEMBERSHIP OF THESE COMMITTEES COMPRISES ARTS PRACTITIONERS AND ADMINISTRATORS AS WELL AS OTHERS, OTHER MEMBERS OF THE WORKING GROUP CAN JOIN THESE COMMITTEES AS OBSERVERS AND ADDITIONAL EXPERTS FROM THE ARTS COMMUNITY WILL ALSO BE INVITED TO PARTICIPATE AS AND WHEN THEIR ADVICE IS REQUIRED.

"WE ARE ALSO SEEKING TO CONSULT, INFORMALLY OR FORMALLY, WITH THE ARTS COMMUNITY ABOUT RELEVANT MATTERS PERTAINING TO THE MISSION OF THE ARTS DEVELOPMENT COUNCIL," SIR JOSEPH SAID.

THE COMMUNITY LIAISON COMMITTEE HAD BEEN SET UP TO FACILITATE THIS PROCESS, HE ADDED.

/IT WOULD .....

IT WOULD MEET SHORTLY TO CONSIDER THE BEST WAYS OF LIAISING WITH THE ARTS COMMUNITY AND THE PUBLIC AT LARGE.

TO SERVICE THE SECRETARIAT OF THE WORKING GROUP, THE POSTS OF EXECUTIVE SECRETARY AND SUPPORTING STAFF HAVE BEEN ALREADY ADVERTISED.

IT IS HOPED THAT PEOPLE WHO ARE KNOWLEDGEABLE ABOUT AND INTERESTED IN THE ARTS IN HONG KONG WILL APPLY TO TAKE UP THESE MEANINGFUL AND CHALLENGING JOBS.

ONE OR TWO ADDITIONAL POSTS WILL ALSO BE ADVERTISED AS THE WORKING GROUP TAKES ON AN INCREASING WORKLOAD.

INTERESTED PARTIES SHOULD APPLY TO THE SECRETARIAT OF THE WORKING GROUP, WHICH IS CURRENTLY BEING STAFFED ON A TEMPORARY BASIS BY MEMBERS OF THE RECREATION AND CULTURE BRANCH.

THE WORKING GROUP HAS ALREADY ESTABLISHED ITS OWN OFFICE. THE TELEPHONE NUMBER OF THE OFFICE IS 594 6668 AND THE FAX NUMBER IS 519 9301. ITS ADDRESS IS ROOM 4004, 40TH FLOOR, REVENUE TOWER, 5 GLOUCESTER ROAD, WAN CHAI, HONG KONG.

THE WORKING GROUP WILL BE HAPPY TO RECEIVE COMMENTS FROM THE PUBLIC WHO MAY WISH TO PROVIDE THEIR VIEWS ON THE DEVELOPMENT OF THE ARTS TO THE WORKING GROUP.

TO FACILITATE ITS WORK THE WORKING GROUP HAS BEEN GIVEN A FULL SET OF THE COMMENTS AND VIEWS SUBMITTED EARLIER DURING THE CONSULTATION PERIOD AFTER THE RELEASE OF THE ARTS POLICY REVIEW REPORT FROM WHICH EMERGED A CONSENSUS FOR THE SETTING UP OF AN ARTS COUNCIL TO PROMOTE THE ARTS.

"WE ARE TRYING TO MEET A TIGHT TIMETABLE AS THE WORKING GROUP AIMS TO COMPLETE ITS WORK AND TO GAIN THE RELEVANT GOVERNMENT APPROVALS EARLY NEXT YEAR TO ENABLE THE SETTING UP OF THE PROVISIONAL HONG KONG ARTS DEVELOPMENT COUNCIL.

THE PROVISIONAL BODY WILL THEN START WORK ON PROMOTION AND DEVELOPMENT OF THE ARTS AND WORK TOWARDS THE SUBSEQUENT ESTABLISHMENT OF THE STATUTORY BODY IN EARLY 1995," SIR JOSEPH SAID.

- - - - 0 - - - -

#### EDUCATION COMMISSION SETS UP WORKING GROUPS

\* \* \* \* \*

THE EDUCATION COMMISSION HAS SET UP THREE WORKING GROUPS TO CONDUCT STUDIES ON EDUCATIONAL STANDARDS, LANGUAGE PROFICIENCY, AND SCHOOL FUNDING.

THE GROUPS HAVE ALREADY HELD INITIAL MEETINGS AND THEY WILL AIM TO SUBMIT DRAFT REPORTS TO THE COMMISSION BY THE END OF MAY NEXT YEAR.

EACH WORKING GROUP IS CHAIRED BY A MEMBER OF THE COMMISSION, AND INCLUDES FOUR COMMISSION MEMBERS AS WELL AS THE CHAIRMAN OF THE COMMISSION, PROFESSOR ROSIE YOUNG.

/"IN ADDITION .....

"IN ADDITION, EACH GROUP HAS CO-OPTED THREE OR FOUR PEOPLE FROM OUTSIDE THE COMMISSION TO CONTRIBUTE THEIR IDEAS AND EXPERIENCE TO THE STUDIES," A SPOKESMAN FOR THE COMMISSION SAID TODAY (THURSDAY).

"THE COMMISSION WANTS EACH STUDY TO DRAW AS FULLY AS POSSIBLE ON LOCAL EXPERTISE AND RESEARCH.

"THE SECRETARY OF THE COMMISSION HAS THEREFORE WRITTEN TO ALL LOCAL TERTIARY INSTITUTIONS, SEEKING THEIR HELP IN IDENTIFYING RELEVANT RESEARCH PROJECTS AND PROVIDING NAMES OF ACADEMIC EXPERTS WHO MIGHT BE ABLE TO PROVIDE EVIDENCE FOR THE STUDIES," HE ADDED.

EDUCATORS AND OTHER MEMBERS OF THE PUBLIC ARE ALSO INVITED TO SUBMIT VIEWS AND SUGGESTIONS TO THE WORKING GROUPS.

THEY SHOULD WRITE TO THE SECRETARY, EDUCATION COMMISSION, 38TH FLOOR, EXCHANGE SQUARE TOWER II, 8 CONNAUGHT PLACE, HONG KONG.

- - - - 0 - - - -

#### EMPLOYMENT OF DISABLED URGED

\* \* \* \* \*

THE GOVERNMENT WILL ACTIVELY PROMOTE OPEN EMPLOYMENT AND SELF-EMPLOYMENT FOR DISABLED PERSONS TO HELP THEM DEVELOP THEIR POTENTIALS, IMPROVE LIVING STANDARD AND INTEGRATE INTO THE COMMUNITY, THE SECRETARY FOR HEALTH AND WELFARE, MRS ELIZABETH WONG, SAID TODAY (THURSDAY).

THIS WILL ALSO HELP THE COMMUNITY UNDERSTAND MORE CORRECTLY THE POTENTIALS OF THE DISABLED AND SAVE PLACES FOR REHABILITATION SERVICES FOR OTHER DISABLED PERSONS QUEUING ON THE REGISTER.

SPEAKING AT THE PRESENTATION OF SOUVENIRS CEREMONY ORGANISED BY THE SELECTIVE PLACEMENT DIVISION OF THE LABOUR DEPARTMENT, MRS WONG URGED EMPLOYERS TO SUPPORT THE REHABILITATION POLICIES OF THE GOVERNMENT AND GIVE A CHANCE TO DISABLED PERSONS TO PROVE THEIR WORKING ABILITIES.

"TO INTEGRATE DISABLED PERSONS INTO OUR COMMUNITY THROUGH GAINFUL EMPLOYMENT RELIES ON THE CO-OPERATION OF DIFFERENT PARTIES CONCERNED," SHE SAID.

FIRST OF ALL, EMPLOYERS, COLLEAGUES AND FAMILY MEMBERS HAVE TO GIVE THEM OPPORTUNITY AND SUPPORT, ESPECIALLY IN HELPING THEM TO ADJUST TO THE NEW WORKING ENVIRONMENT.

SECONDLY, DISABLED PERSONS THEMSELVES HAVE TO STRIVE HARD AND EQUIP THEMSELVES IN EDUCATIONAL ATTAINMENTS, TECHNICAL SKILLS AND INTERPERSONAL RELATIONSHIP.

AT THE SAME TIME, GOVERNMENT DEPARTMENTS AND REHABILITATION AGENCIES HAVE TO SECURE ADEQUATE RESOURCES TO PROVIDE CO-ORDINATED SERVICES ON VOCATIONAL TRAINING, COUNSELLING AND EMPLOYMENT ASSISTANCE SO THAT THE NEEDS OF DISABLED PERSONS CAN BE WELL TAKEN CARE OF, SHE ADDED.

/TO OVERCOME .....

TO OVERCOME THE RESISTANCE OF SOME LOCAL RESIDENTS TO REHABILITATION SERVICES IN CERTAIN DISTRICTS, MRS WONG SAID THE GOVERNMENT WAS REINFORCING THE EFFORTS IN PUBLIC EDUCATION.

BETWEEN NOW AND 1996/97, WE SHALL BE MAKING USE OF \$31 MILLION FOR PUBLIC EDUCATION ON REHABILITATION, SHE SAID.

THIS SHOWS THE GOVERNMENT'S DETERMINATION TO ELIMINATE DISCRIMINATION AGAINST DISABLED PERSONS IN THE COMMUNITY, SHE ADDED.

"WE HOPE THAT BY MEANS OF DIFFERENT PROMOTIONAL CHANNELS, MEMBERS OF THE PUBLIC CAN CULTIVATE AN ATTITUDE OF UNDERSTANDING AND ACCEPTANCE TOWARDS DISABLED PERSONS IN OUR COMMUNITY," SHE SAID.

THE AIM OF THE GOVERNMENT AND THE REHABILITATION AGENCIES FOR UTILISING COMMUNITY RESOURCES TO PROVIDE REHABILITATION SERVICES IS TO ENABLE THE DISABLED TO LIVE A DIGNIFIED AND RICH LIFE, AS THEIR ABLE-BODIED COUNTERPARTS, MRS WONG SAID.

- - - - 0 - - - -

TOGETHER WE DEVELOP OUR ABILITIES

\* \* \* \* \*

DISABLED PERSONS SHOULD TREASURE THEIR EMPLOYMENT OPPORTUNITIES, EXCEL IN WORK PERFORMANCE AND WORK FOR THE GROWTH OF THE COMMUNITY.

THEY SHOULD WORK TOGETHER WITH THEIR ABLE-BODIED COUNTERPARTS TO ACHIEVE THE GOAL "TOGETHER WE DEVELOP OUR ABILITIES".

THIS WAS STATED BY THE COMMISSIONER FOR LABOUR, MRS KATHERINE FOK, TODAY (THURSDAY) IN THE WELCOMING REMARKS AT THE PRESENTATION OF SOUVENIRS CEREMONY 1993 FOR EMPLOYERS OF DISABLED PERSONS AND OUTSTANDING DISABLED EMPLOYEES.

MRS FOK SAID THE EMPLOYERS WHO WERE COMMENDED HAD BEEN SELECTED FROM MORE THAN 600 EMPLOYING ESTABLISHMENTS.

"ALL OF THEM HAVE ADOPTED AN OPEN-MINDED ATTITUDE IN EMPLOYING DISABLED PERSONS, INCLUDING THE TOTALLY BLIND, THE SPASTIC, THE MENTALLY RESTORED AND THE WHEEL-CHAIR BOUND," SHE SAID.

SOME OF THEM HAVE ALSO PROVIDED A GOOD LEVEL OF SUPPORT TO THEIR DISABLED EMPLOYEES WITHIN THEIR COMPANIES.

"BY USING VARIOUS MEANS TO BOOST THEIR EMPLOYEES' CONFIDENCE AT WORK, THESE EMPLOYERS HAVE CONTRIBUTED POSITIVELY TO INTEGRATING THE DISABLED, THROUGH WORK, INTO THE COMMUNITY," MRS FOK ADDED.

THE LABOUR COMMISSIONER ALSO CONGRATULATED THE WINNERS OF THIS YEAR'S OUTSTANDING DISABLED EMPLOYEES AWARD AND APPEALED TO OTHER DISABLED PERSONS TO FOLLOW THEIR EXAMPLES.

ORGANISED BY THE SELECTIVE PLACEMENT DIVISION (SPD) OF THE LABOUR DEPARTMENT, THE CEREMONY IS AIMED AT PAYING TRIBUTE TO EMPLOYERS WHO HAVE EMPLOYED A HIGH PERCENTAGE OF DISABLED PERSONS COMPARED TO THEIR TOTAL WORKFORCE OR HAVE EMPLOYED PERSONS WITH SEVERE DISABILITY, AND THOSE WHO HAVE MADE SPECIAL EFFORTS TO ACCOMMODATE SUCH WORKERS DURING THE PAST YEAR.

IT ALSO AIMED AT RECOGNISING DISABLED EMPLOYEES NOMINATED BY THEIR EMPLOYERS FOR THEIR OUTSTANDING PERFORMANCE AT WORK.

THE SECRETARY FOR HEALTH AND WELFARE, MRS ELIZABETH WONG ALSO PRESENTED THE OUTSTANDING DISABLED EMPLOYEES AWARDS (ODEA) TO 15 EMPLOYEES FOR THEIR EXEMPLARY WORK PERFORMANCE AND SOUVENIRS TO THEIR NOMINATING EMPLOYERS.

THE ODEA WINNERS WERE:

- \* MR CHAN CHI-CHUNG OF THE REPULSE BAY COMPANY LTD;
- \* MR CHAN MUN-KUEN OF THE WING ON DEPARTMENT STORES (HONG KONG) LTD;
- \* MR KENNETH CHANG KIN-FAI OF THE AMERICAN INTERNATIONAL ASSURANCE CO (BERMUDA) LTD;
- \* MS LOLITTA HO SUET-MUI OF TRADE DEPARTMENT;
- \* MR LAM WING-CHUEN OF THE WING ON DEPARTMENT STORES (HONG KONG) LTD;
- \* MR LAU KUI-WAH OF THE OMNI PRINCE HOTEL HONG KONG;
- \* MR LAU SHUI-MAN OF THE ROYAL HONG KONG JOCKEY CLUB;
- \* MR RAYMOND LEUNG CHEUK-WING OF SECRETARIES LTD;
- \* MISS LEUNG HING-LING OF TIM FUNG STEAM LAUNDRY CO LTD;
- \* MR JACKY LEUNG KAM-WING OF KWAI SHING SCHOOL;
- \* MR LI PAUL-WAH OF HONG KONG POST OFFICE;
- \* MISS MA YUK-YI OF THE SUCCESS CHART INDUSTRIES LTD;
- \* MR MUI YUNG-CHIAO OF THE ROCHESTER POLYBAG MANUFACTURING CO LTD;
- \* MR NG YIU-TIM OF THE HONG KONG TELECOMMUNICATIONS LTD; AND
- \* MR YUEN WAI-TO OF WAI YUEN TONG MED. CO LTD.

MEANWHILE, 16 EMPLOYERS RECEIVED SOUVENIR PLAQUES FROM MRS FOK FOR THEIR EFFORTS AND OPEN-MINDED ATTITUDE IN EMPLOYING DISABLED WORKERS THROUGH THE SPD SERVICE BETWEEN JULY 1992 AND JUNE THIS YEAR.

OF THESE EMPLOYERS, SOME OF THEM HAVE EMPLOYED PERSONS WITH SEVERE DISABILITIES SUCH AS TOTALLY BLIND, WHEEL-CHAIR BOUND, THE SPASTICS AND THE EX-MENTALLY ILL.

SOME EMPLOYERS ALSO MADE SPECIAL EFFORTS IN ACCOMMODATING DISABLED EMPLOYEES INCLUDING THE PROVISION OF EMPLOYMENT AIDS, ADJUSTMENTS MADE TO OFFICE ACCOMMODATION, JOB RESTRUCTURING, STAFF REDEPLOYMENT, SPECIAL TIME ALLOWANCE GIVEN FOR MEDICAL TREATMENT AND PERSONAL ENCOURAGEMENT.

THESE EMPLOYERS WERE:

ASIA PRODUCTION;  
EDUCATION DEPARTMENT;  
ENVIRONMENTAL PROTECTION DEPARTMENT;  
FAIRWOOD HOLDINGS LTD;  
FAST DELIVERY SERVICES COMPANY;  
HONG KONG FACTORY FOR THE BLIND;  
JOYFUL SERVICES LTD;  
LAB SERVICES;  
MANAGEMENT SOCIETY FOR HEALTHCARE PROFESSIONALS;  
MICROWARE USA LTD;  
OCEAN EMPIRE INTERNATIONAL LTD;  
OI SEE SHOES COMPANY;  
STANDARD CHARTERED BANK;  
TAI PAN BREAD & CAKES CO LTD;  
TC TECHNOLOGY LTD; AND  
THE WING ON DEPARTMENT STORES (HONG KONG) LTD.

- - - - 0 - - - -

HK CUSTOMS RETURNS LOST CARS TO U.S. CUSTOMS  
\* \* \* \* \*

HONG KONG CUSTOMS TODAY (THURSDAY) HANDED BACK 12 LEFT-HAND DRIVE CARS SEIZED IN JULY TO THE U.S. CUSTOMS REPRESENTATIVES IN HONG KONG FOR SUBSEQUENT RETURN TO THEIR OWNERS IN THE USA.

ACTING ON A TIP-OFF BY THE U.S. CUSTOMS SERVICE, HONG KONG CUSTOMS FOUND 12 LEFT-HAND DRIVE CARS INSIDE SIX CONTAINERS AT KWAI CHUNG CONTAINER TERMINAL ON JULY 22.

THE VEHICLES, BEING SHIPPED FROM NEW YORK AND MANIFESTED AS MIXED METAL SCRAPS, WERE INTENDED FOR SMUGGLING TO CHINA.

ASSISTED BY THE OFFICE OF THE U.S. CUSTOMS REPRESENTATIVES IN HONG KONG, THE CARS WERE THEN CONFIRMED TO HAVE BEEN REPORTED STOLEN IN THE USA, MAINLY FROM PHILADELPHIA.

THE HEAD OF CUSTOMS PROSECUTION, INTELLIGENCE AND INVESTIGATION BUREAU, MR CHIK WAH-WAI, COMMENTED THAT THE OCCASION HAD SUCCESSFULLY REFLECTED THE IMPORTANCE OF CO-OPERATION BETWEEN HONG KONG AND U.S. CUSTOMS IN COMBATING SMUGGLING ACTIVITIES.

"HONG KONG CUSTOMS WILL CONTINUE TO STRENGTHEN THE MUTUAL CO-OPERATIVE RELATIONSHIP BETWEEN THE TWO ADMINISTRATIONS BY EXCHANGE OF INTELLIGENCES AND JOINT OPERATIONS," HE ADDED.

- - - - 0 - - - -

LAST REPORT ON BEACH WATER QUALITY GRADING THIS YEAR

\* \* \* \* \*

THE ENVIRONMENTAL PROTECTION DEPARTMENT (EPD) TODAY (THURSDAY) ANNOUNCED GRADES ON THE BACTERIOLOGICAL WATER QUALITY OF ALL BATHING BEACHES IN HONG KONG.

THE PURPOSE OF THE GRADING SYSTEM IS TO INFORM SWIMMERS AND THE GENERAL PUBLIC ABOUT THE STATE OF BACTERIOLOGICAL POLLUTION AT VARIOUS BEACHES.

A SPOKESMAN FOR THE DEPARTMENT SAID THE GRADING WOULD BE ANNOUNCED BIWEEKLY DURING THE BATHING SEASON TO COINCIDE WITH THE FREQUENCY AT WHICH BEACH WATERS WERE USUALLY SAMPLED.

THE GRADING IS BASED ON THE MOST RECENT E COLI DATA OBTAINED BY EPD IN ITS ROUTINE MONITORING PROGRAMME.

AS WITH LAST YEAR, THE GRADING ALSO INCLUDES AN ESTIMATE OF THE RISK OF SUFFERING SOME MINOR SKIN OR GASTROINTESTINAL COMPLAINTS AS A RESULT OF SWIMMING AT A BEACH WHICH HAS SOME DEGREE OF POLLUTION.

THE ESTIMATE IS BASED ON A VERY LARGE BODY OF STATISTICAL INFORMATION GATHERED IN HONG KONG IN RECENT BATHING SEASONS.

THE GRADING OF SOME BEACHES MAY VARY DURING THE SUMMER. THIS REPRESENTS A NATURAL FLUCTUATION IN THE BACTERIOLOGICAL QUALITY OF BATHING WATERS IN MOST CASES, AS RAIN AND TIDES BRING MORE OR LESS POLLUTION TO THE BEACHES.

HOWEVER, THE GRADES GIVE A GOOD GENERAL PICTURE OF THE WATER QUALITY AT BATHING BEACHES AT THE TIME OF REPORTING AND FORM THE BEST AVAILABLE FORECAST FOR THE IMMEDIATE FUTURE.

"BEACHES WITH HIGHLY DEVELOPED HINTERLANDS ARE LIKELY TO BE MORE POLLUTED THAN THE GRADES SUGGEST DURING AND AFTER HEAVY RAIN.

"BATHERS SHOULD AVOID SUCH BEACHES FOR TWO OR THREE DAYS AFTER A STORM, LONGER IF THE WEATHER REMAINS OVERCAST OR LESS IF THERE IS STRONG SUNSHINE." THE SPOKESMAN SAID.

THE SYSTEM FOR GRADING BEACH WATER QUALITY IS AS FOLLOWS:

- \* GRADE "1" INDICATES THAT THE WATER QUALITY IS GOOD. THE E COLI COUNT IS NO MORE THAN 24 PER 100 MILLILITRES AT EACH BEACH SO GRADED, AND THE EXPECTED RISK OF MINOR ILLNESS TO SWIMMERS IS UNDETECTABLE.
- \* GRADE "2" INDICATES THAT THE WATER QUALITY IS FAIR. THE E COLI COUNT IS NO MORE THAN 180 PER 100 MILLILITRES AT EACH BEACH SO GRADED, AND THE EXPECTED HEALTH RISK IS NO MORE THAN 10 CASES OF MINOR ILLNESS PER 1,000 SWIMMERS.
- \* GRADE "3" INDICATES THAT THE WATER QUALITY IS POOR. THE E COLI COUNT IS NO MORE THAN 610 PER 100 MILLILITRES AT EACH BEACH SO GRADED, AND THE EXPECTED HEALTH RISK IS NO MORE THAN 15 CASES OF MINOR ILLNESS PER 1,000 SWIMMERS.

- \* GRADE "4" INDICATES THAT THE WATER QUALITY IS VERY POOR. THE E COLI COUNT IS MORE THAN 610 PER 100 MILLILITRES AT EACH BEACH SO GRADED, AND THE EXPECTED HEALTH RISK IS MORE THAN 15 CASES OF MINOR ILLNESS PER 1,000 SWIMMERS.

THE DECISION ON WHETHER OR NOT TO CLOSE A BEACH TO SWIMMERS IS BASED ON A JUDGEMENT OF WHAT DEGREE OF POLLUTION IS ACCEPTABLE.

NORMALLY, THE CLOSURE OF A BEACH WOULD ONLY BE CONSIDERED BY THE URBAN COUNCIL OR REGIONAL COUNCIL IF A GRADE "4" OCCURRED REPEATEDLY, SO THAT THE AVERAGE HEALTH RISK OVER THE BATHING SEASON EXCEEDED 15 CASES PER 1,000 SWIMMERS.

AT PRESENT, TWO BATHING BEACHES, NAMELY CASTLE PEAK AND OLD CAFETERIA, HAVE BEEN DECLARED UNSUITABLE FOR SWIMMING BASED ON THE WATER QUALITY DURING PAST SEASONS.

THEY ARE POLLUTED BY FAECAL WASTES. THE PUBLIC ARE ADVISED NOT TO SWIM AT THESE TWO BEACHES.

IN ADDITION, ROCKY BAY BEACH HAS BEEN CLOSED FOR SWIMMING BY THE URBAN COUNCIL. THESE THREE BEACHES ARE IDENTIFIED BY AN "X" IN THE FOLLOWING LIST.

THE GRADES ON THE BACTERIOLOGICAL WATER QUALITY OF VARIOUS BEACHES ARE LISTED BELOW:

BEACH -----	PREVIOUS GRADING ----- (AS AT 7.10.93)	PRESENT GRADING ----- (AS AT 21.10.93)
HONG KONG SOUTH -----		
BIG WAVE BAY	2	2
CHUNG HOM KOK	2	2
DEEP WATER BAY	2	2
HAIRPIN	1	1
MIDDLE BAY	1	1
REPULSE BAY	2	1
SHEK O	2	2
SOUTH BAY	1	1
ST. STEPHEN'S	1	1
TURTLE COVE	2	1
STANLEY MAIN	2	1
ROCKY BAY	X	X
TO TEI WAN*	1	1
TUEN MUN DISTRICT -----		
OLD CAFETERIA	X	X
NEW CAFETERIA	3	2
CASTLE PEAK	X	X
KADOORIE	2	2
BUTTERFLY	3	3

## SAI KUNG DISTRICT

-----

CAMPERS	1	1
CLEAR WATER BAY 1ST BEACH	2	2
CLEAR WATER BAY 2ND BEACH	2	1
HAP MUN BAY	1	1
KIU TSUI	1	1
PAK SHA CHAU	1	1
SILVERSTRAND	2	2
TRIO (HEBE HAVEN)	2	2

## ISLANDS DISTRICT

-----

CHEUNG SHA UPPER	1	1
CHEUNG SHA LOWER	2	2
DISCOVERY BAY*	2	2
HUNG SHING YEH	1	1
KWUN YAM WAN	1	1
TONG FUK	1	1
LO SO SHING	1	1
PUI O	1	1
SILVERMINE BAY	2	2
TUNG WAN, CHEUNG CHAU	1	1
TUNG O*	1	1

## TSUEN WAN DISTRICT

-----

ANGLERS'	4	3
APPROACH	3	3
CASAM	3	3
GEMINI	2	3
HOI MEI WAN	3	2
LIDO	2	2
TING KAU	3	3
TUNG WAN, MA WAN	2	2

NOTE : "X" THE BEACH HAS BEEN CLOSED FOR SWIMMING PURPOSES.  
\* NON-GAZETTED BEACHES

THE FOLLOWING BEACHES HAVE CHANGED GRADING ON THIS OCCASION:

REPULSE BAY, TURTLE COVE, STANLEY MAIN AND CLEAR WATER BAY 2ND BEACH FROM "2" TO "1"; HOI MEI WAN AND NEW CAFETERIA FROM "3" TO "2"; ANGLERS' FROM "4" TO "3"; GEMINI FROM "2" TO "3".

ALL OF THE CHANGES ARE WITHIN THE NORMAL RANGE OF FLUCTUATION OF THE BACTERIOLOGICAL WATER QUALITY OF THESE BEACHES.

THIS IS THE LAST REPORT ON BEACH WATER QUALITY GRADINGS THIS YEAR, AS THE BATHING SEASON WILL COME TO AN END BY LATE OCTOBER.

AN ANNUAL REVIEW ON THE WATER QUALITY OF VARIOUS BATHING BEACHES IN THIS BATHING SEASON WILL BE PREPARED BY EPD BY THE END OF THIS YEAR.

-----

FOR FURTHER ENQUIRIES, PLEASE CONTACT PRINCIPAL ENVIRONMENTAL PROTECTION OFFICER OF EPD DR M J BROOM ON TEL 835 1234.

- - - - 0 - - - -

CLOSURE OF UNAUTHORISED STRUCTURE SOUGHT

\* \* \* \* \*

THE BUILDING AUTHORITY IS SEEKING TO CLOSE AN UNAUTHORISED STRUCTURE IN SHAM SHUI PO SO THAT IT CAN BE DEMOLISHED WITHOUT CAUSING DANGER TO THE OCCUPIERS AND THE PUBLIC.

THE UNAUTHORISED SINGLE-STOREY STRUCTURE, ERECTED ON A VACANT SITE AT 252 YU CHAU STREET, IS BEING USED FOR STORAGE OF WASTE PAPER.

NOTICE OF INTENTION TO APPLY FOR A CLOSURE ORDER FROM THE HONG KONG DISTRICT COURT UNDER THE BUILDINGS ORDINANCE ON DECEMBER 16 WAS POSTED ON THE PREMISES TODAY (THURSDAY).

DEMOLITION OF THE UNAUTHORISED STRUCTURE WILL START AS SOON AS THE CLOSURE ORDER IS ISSUED.

- - - - 0 - - - -

56 LEGCO MEMBERS DEBATED POLICY ADDRESS

\* \* \* \* \*

A TOTAL OF 56 MEMBERS OF THE LEGISLATIVE COUNCIL SPOKE IN A TWO-DAY DEBATE ON A MOTION OF THANKS FOR THE GOVERNOR'S POLICY ADDRESS WHICH ENDED TODAY (THURSDAY).

GOVERNMENT OFFICIALS WILL REPLY TO THE POINTS RAISED WHEN THE DEBATE RESUMES NEXT WEDNESDAY (OCTOBER 27).

- - - - 0 - - - -

THURSDAY, OCTOBER 21, 1993

- 23 -

HONG KONG GOVERNMENT EXCHANGE FUND  
MONEY MARKET OPERATIONS

\* \* \* \* \*

	\$ MILLION -----
OPENING BALANCE IN THE ACCOUNT	3,960
REVERSAL OF LAF	-960
BALANCE AFTER REVERSAL OF LAF	3,000
NET INJECTION/WITHDRAWAL TODAY	NIL
EFFECT OF LAF TODAY	NIL
CLOSING BALANCE IN THE ACCOUNT	3,000

LAF RATE 2.00 BID/4.00 OFFER TWI 112.8 \*\*0.0\* 21.10.93

HONG KONG GOVERNMENT EXCHANGE FUND

EF BILLS

EF NOTES/HONG KONG GOVERNMENT BONDS

TERMS	YIELD	TERM	ISSUE	COUPON	PRICE	YIELD
1 WEEK	2.91 PCT	13 MONTHS	2411	4.625	101.59	3.13
1 MONTH	2.82 PCT	16 MONTHS	2502	4.75	101.89	3.30
3 MONTHS	2.71 PCT	19 MONTHS	2505	3.75	100.40	3.52
6 MONTHS	2.81 PCT	22 MONTHS	2508	4.625	101.82	3.61
12 MONTHS	3.08 PCT					

TOTAL TURNOVER OF BILLS AND BONDS - 18,016 MN

CLOSED 21 OCTOBER 1993

----- 0 -----