



# DAILY INFORMATION BULLETIN

ISSUED BY GOVERNMENT INFORMATION SERVICES  
BEACONSFIELD HOUSE, HONG KONG. TEL.: 842 8777

FRIDAY, APRIL 22, 1994

<u>CONTENTS</u>	<u>PAGE NO.</u>
WITHDRAWAL OF CHINA'S MFN STATUS AFFECTS CONFIDENCE IN HK .	1
TRANSCRIPT OF GOVERNOR'S MEDIA SESSION .....	1
COMMUNITY PARTNERSHIP BENEFITS EVERYONE .....	2
TRANSCRIPT OF CHIEF SECRETARY'S MEDIA SESSION .....	3
CS AGAINST TRADE SANCTIONS .....	5
AIRPORT'S COST CONTROL MECHANISM WORKING WELL .....	5
MORE ASSISTANCE FOR LIVESTOCK FARMERS .....	6
PETITION ON INTERIM MEASURE ON TRANSFER TO LOCAL CONDITION OF SERVICE .....	8
DIRECTOR REFLECTS STAFF CONCERN OVER LOCALISATION .....	9
CONSUMER PRICE INDICES FOR MARCH 1994 .....	9
MOST PEOPLE SATISFIED WITH PRESENT SITUATION: POLL .....	15
NOISE MEASUREMENTS AT HK STADIUM RELEASED .....	16
GOOD START FOR GREEN MANAGER SCHEME .....	16
DESIGNATION OF POLLING STATIONS .....	17
BOARD AMENDS DRAFT TUEN MUN OUTLINE ZONING PLAN .....	17
/TOWN PLANNING .....	

**CONTENTS**

**PAGE NO.**

TOWN PLANNING (AMENDMENT) ORDINANCE 1994 ENACTED .....	19
LICENCE FEES FOR HOTELS AND GUESTHOUSES TO BE REVISED .....	19
ROCK HILL STREET TO BE EXTENDED .....	20
PIER PLANNED FOR PAK WAN .....	21
TENDERS INVITED FOR SEABED PREPARATION WORKS .....	21
JETTY FOR NEW AIRPORT .....	22
MATRIMONIAL CAUSES AND MAGISTRATES FEES ON RISE .....	22
TOTAL BAN ON TIGER MEDICINES FROM NEXT THURSDAY .....	23
TRADE DEPARTMENT CUSTOMER LIAISON GROUP HOLDS ITS FIRST MEETING .....	24
WIDER WORK SAFETY PROTECTION FOR YOUNG PEOPLE .....	25
HIGHWAYS DEPARTMENT ASSURES PUBLIC OF SERVICE STANDARD .....	27
ED RECRUITS ASSISTANT DIRECTOR .....	28
RESULTS OF CONDUCT COUNCIL ELECTION ANNOUNCED .....	29
DISTRICT BOARD MEMBERS VISIT PREVOCATIONAL SCHOOL .....	30
REHABILITATION SERVICES HELP DISABLED INTEGRATE INTO COMMUNITY .....	31
SWIMMING SAFETY ADVICE .....	32
TAI PO RESIDENTS URGED TO REGISTER AS VOTERS .....	33
GOVERNMENT STAFF INTER-DEPARTMENTAL RACE 1994 .....	33
HONG KONG MONETARY AUTHORITY MONEY MARKET OPERATIONS ....	34

WITHDRAWAL OF CHINA'S MFN STATUS AFFECTS CONFIDENCE IN HK

\* \* \* \* \*

THE GOVERNOR, THE RT HON CHRISTOPHER PATTEN, TODAY (FRIDAY) SAID HONG KONG NEEDED UNCONDITIONAL RENEWAL OF CHINA'S MOST FAVOURED NATION (MFN) STATUS, OR ITS CONFIDENCE WOULD BE SERIOUSLY AFFECTED AT A CRUCIAL TIME.

SPEAKING AT A LUNCHEON HOSTED BY THE AMERICAN CHAMBER OF COMMERCE, MR PATTEN NOTED HONG KONG WOULD BE HARDER HIT BY THE DAMAGE MFN WITHDRAWAL WOULD DO TO CHINA.

"NO DOUBT WE WOULD BOUNCE BACK IN TIME; BUT THE SHORT-TERM IMPACT WOULD BE EXTREMELY SERIOUS.

"OUR LATEST ESTIMATES ARE THAT OUR ECONOMIC GROWTH WOULD BE CUT BY MORE THAN HALF; AND OUR UNEMPLOYMENT WOULD MORE THAN DOUBLE," THE GOVERNOR SAID.

HE SAID SUCH A BLOW WOULD COME AT A WORST POSSIBLE TIME FOR HONG KONG WHICH WAS IN THE FINAL THREE YEARS OF THE TRANSITION FROM BRITISH TO CHINESE SOVEREIGNTY.

"THE FACT THAT IT HAS GENERALLY GONE PRETTY WELL SO FAR HAS BEEN IN LARGE PART DUE TO HONG KONG'S ROBUST ECONOMIC PERFORMANCE, WHICH IN TURN HAS BEEN DUE IN LARGE PART TO THE GROWTH OF CHINA TRADE.

"A BODY BLOW TO THAT TRADE WOULD BE A BODY BLOW TO CONFIDENCE IN HONG KONG AT A CRUCIAL TIME. IT WOULD PUT AT RISK ALL THAT WE ARE TRYING TO DO TO SECURE HONG KONG'S FUTURE."

THE GOVERNOR SAID THE MFN RENEWAL WAS IN THE INTERESTS NOT ONLY OF HONG KONG - BUT OF THE U.S., OF ASIA AND THE REST OF THE WORLD.

HE NOTED THAT 900 U.S. FIRMS WERE ESTABLISHED IN THE TERRITORY AND U.S. INVESTMENT IN HONG KONG WAS OVER US\$9 BILLION.

"WE BUY MORE U.S. EXPORTS PER HEAD THAN THE EUROPEAN UNION OR JAPAN, AND THE GROWING U.S. INVESTMENT AND TRADE INTERESTS IN THE BOOMING CHINA MARKET ARE TO A LARGE EXTENT MANAGED THROUGH HONG KONG," THE GOVERNOR SAID.

- - - - 0 - - - -

TRANSCRIPT OF GOVERNOR'S MEDIA SESSION

\* \* \* \* \*

THE FOLLOWING IS THE TRANSCRIPT OF THE GOVERNOR THE RT HON CHRISTOPHER PATTEN'S MEDIA SESSION AFTER THE AMERICAN CHAMBER OF COMMERCE LUNCHEON MEETING TODAY (FRIDAY):

GOVERNOR: ... THINK SHE'LL HAVE A GREAT IMPACT IN WASHINGTON AND MORE TO THE POINT, SO DO THE AMERICANS LIKE THE MEMBERS OF THE CHAMBER OF COMMERCE THAT I'VE BEEN TALKING TO TODAY.

/QUESTION: .....

QUESTION: CAN YOU EXPLAIN FURTHER WHY THIS CRUCIAL TIMING IS SO IMPORTANT FOR THE RENEWAL OF MFN?

GOVERNOR: I THINK THAT IT'S ALWAYS THE CASE THAT OPEN TRADE IS CRUCIAL AND IMPORTANT TO HONG KONG. I MADE THE POINT MYSELF WHEN I WAS IN WASHINGTON LAST YEAR THAT CHINA AND THE UNITED STATES ARE OUR TWO BIGGEST TRADING PARTNERS, WE NEED AS GOOD AND OPEN A TRADING RELATIONSHIP WITH BOTH OF THEM AND THAT'S AN IMPORTANT PART OF OUR ECONOMIC GROWTH WHICH SUSTAINS OUR LIVELIHOOD AND HELPS TO ENSURE OUR STABILITY. SO I THINK IT'S EXTREMELY IMPORTANT THAT WE SHOULD CONTINUE TO HAVE THE BEST POSSIBLE TRADING RELATIONSHIP BETWEEN CHINA AND THE UNITED STATES IN ORDER TO SECURE OUR ECONOMIC PROSPERITY.

QUESTION: IN THE SPEECH YOU MENTIONED SHANGHAI AND GUANGZHOU, BUT YOU MISSED OUT BEIJING. IS THAT AT ALL RELATED TO THE FACT THAT THE QUESTION OF DISSIDENTS THERE HAS BEEN PARTICULARLY STRONG? AND HOW CAN THE UNITED STATES JUSTIFY CARRYING ON TRADE WHEN THE CRACKDOWN ON DISSIDENTS HAS BEEN GOING ON SO STRONGLY RECENTLY?

GOVERNOR: WELL, THE FIRST ANSWER TO YOUR QUESTION IS THAT IT HAD EVERYTHING TO DO WITH THE ECONOMIC GROWTH RATES IN SHANGHAI AND GUANGDONG. AS EVERYBODY KNOWS, THE COASTAL PROVINCES HAVE BEEN GROWING MORE RAPIDLY THAN THE AREAS TO THE WEST AND TO THE NORTH. SECONDLY, I'VE MADE IT CLEAR AGAIN AND AGAIN THAT WHATEVER OUR COLLECTIVE AND INDIVIDUAL CONCERNS ABOUT HUMAN RIGHTS, I THINK THAT TRADE AND POLITICAL ISSUES, TRADE AND HUMAN RIGHTS SHOULD BE KEPT SEPARATE AND IT IS POSSIBLE TO HAVE A SERIOUS DIALOGUE, AS FOR EXAMPLE, BRITAIN HAS DONE WITH CHINA AND AS FOR EXAMPLE THE AUSTRALIANS DO WITH CHINA, WITHOUT MIXING UP TRADE AND POLITICS. THAT'S BEEN MY VIEW SINCE BEFORE I WENT TO WASHINGTON TO ARGUE THE CASE LAST YEAR.

QUESTION: OBVIOUSLY YOU FELT COMPELLED NOT TO BRING UP WHAT'S AGAIN THE QUESTION. YOU DON'T WANT TO BE SEEN AS A SALESMAN FOR CHINA. WHY ARE YOU SO SENSITIVE ON THE POINT?

GOVERNOR: WELL IF I DID ACT AS A SALESMAN FOR CHINA, THE NEW CHINA NEWS AGENCY WOULD COME DOWN ON ME LIKE A TON OF, DARE I SAY, BRICKS.

- - - - 0 - - - -

#### COMMUNITY PARTNERSHIP BENEFITS EVERYONE

\* \* \* \* \*

THE PARTNERSHIP BETWEEN PRIVATE ORGANISATIONS, THE GOVERNMENT AND THE JOCKEY CLUB HAS PROVED ITSELF TO BE RESPONSIVE TO THE NEEDS OF THE COMMUNITY AND HAS BROUGHT EVERYONE GREAT BENEFIT, THE GOVERNOR, THE RT HON CHRISTOPHER PATTEN, SAID TODAY (FRIDAY).

OFFICIATING AT THE OPENING CEREMONY OF THE RUTTONJEE HOSPITAL, MR PATTEN SAID THE HISTORY OF DEVELOPMENT OF THE HOSPITAL WAS A TREMENDOUS EXAMPLE OF THIS PARTNERSHIP.

THE HOSPITAL'S PREDECESSOR, THE RUTTONJEE SANATORIUM, WAS SET UP BY THE HONG KONG TUBERCULOSIS, CHEST AND HEART DISEASES ASSOCIATION WITH SUPPORT FROM THE GOVERNMENT AND THE JOCKEY CLUB.

MR PATTEN SAID SUCH PARTNERSHIP HELPED TO LAUNCH A TUBERCULOSIS PREVENTION CAMPAIGN IN THE 1950'S.

"THESE EFFORTS WERE TREMENDOUSLY SUCCESSFUL, LEADING TO A REDUCTION IN MORTALITY FROM TUBERCULOSIS FROM 208 PER 100,000 IN THE POPULATION IN 1951 TO ONLY 7.3 PER 100,000 BY THE LATE 1980'S," HE SAID.

WHILE CONTINUING TO CARE FOR TUBERCULOSIS, CHEST AND HEART DISEASES, THE NEW HOSPITAL WILL PROVIDE MANY MORE BEDS FOR GERIATRIC CASES AND WILL PROVIDE TREATMENT FOR AILMENTS THAT COMMONLY AFFECT OLDER PEOPLE.

"IT WILL PROVIDE THE MOST COMPREHENSIVE SERVICE TO GERIATRIC PATIENTS OF ALL THE HOSPITALS ON HONG KONG ISLAND," HE SAID.

- - - - 0 - - - -

TRANSCRIPT OF CHIEF SECRETARY'S MEDIA SESSION

\* \* \* \* \*

THE FOLLOWING IS THE TRANSCRIPT OF THE MEDIA SESSION BY THE CHIEF SECRETARY, MRS ANSON CHAN, AT THE CGO LOBBY THIS (FRIDAY) AFTERNOON BEFORE HER DEPARTURE FOR THE VISIT TO THE UNITED STATES:-

CS: AS YOU KNOW, I SHALL BE LEAVING FOR WASHINGTON THIS EVENING, SO TO SAVE YOU A TRIP OUT TO THE AIRPORT, I THOUGHT I MIGHT SAY A FEW WORDS TO YOU RIGHT NOW. I SHALL BE SPENDING FOUR AND A HALF DAYS IN WASHINGTON AND ONE AND A HALF DAYS IN NEW YORK. I HAVE A VERY FULL AND A VERY HECTIC PROGRAMME INDEED. DURING MY VISIT, I SHALL BE SEEING THE ACTING SECRETARY OF STATE, MR STROBE TALBOTT, THE TREASURY SECRETARY, MR LLOYD BENTSEN. I SHALL ALSO BE MEETING WITH SENATE MAJORITY LEADER, MR GEORGE MITCHELL, AND THE SPEAKER OF THE HOUSE, MR TOM FOLEY AND OTHER CONGRESSIONAL LEADERS. I HAVE ALSO TWO FAIRLY IMPORTANT SPEAKING ENGAGEMENTS, FIRST OF ALL, TO THE NATIONAL PRESS CLUB IN WASHINGTON AND TO THE ASIA SOCIETY IN NEW YORK.

THE PURPOSE OF MY VISIT THIS TIME IS TWO-FOLD: FIRST, TO STRENGTHEN THE TRADITIONALLY CLOSE ECONOMIC AND TRADE TIES THAT WE HAVE WITH THE UNITED STATES, AND SECONDLY, OF COURSE, TO EXPRESS OUR CONCERN OVER THE POSSIBLE WITHDRAWAL OF THE MFN STATUS FOR CHINA. I THINK THAT ON THE HONG KONG ECONOMIC FRONT, I HAVE A GOOD MESSAGE TO BRING TO THE PEOPLE IN THE STATES. OUR ECONOMY CONTINUES TO PERFORM VERY ROBUSTLY AND ALTHOUGH BETWEEN NOW AND 1997, NO DOUBT, THERE WILL BE UPS AND DOWNS, ON THE WHOLE, THE ECONOMIC PROSPECTS ARE VERY BRIGHT AND I HOPE THIS WILL BE A VERY GOOD AND CLEAR MESSAGE TO THOSE WHO CONTINUE TO WANT TO TRADE WITH US AND REGARD HONG KONG AS THE HUB OF BUSINESS ACTIVITIES IN THE ASIA PACIFIC REGION.

/DURING MY .....

DURING MY VISIT, OF COURSE, I SHALL ALSO BE LOBBYING FOR THE UNCONDITIONAL EXTENSION OF MFN STATUS FOR CHINA. I WANT TO EXPLAIN VERY CLEARLY THAT ANY THREATENED WITHDRAWAL OF MFN STATUS FOR CHINA WILL DEAL AN ECONOMIC BODY BLOW TO HONG KONG AT THE TIME WHEN WE CAN LEAST AFFORD IT, THAT IS, ABOUT SLIGHTLY OVER THREE YEARS FROM 1997. THERE WILL BE ENOUGH UNCERTAINTIES ON THE HORIZON AND WE FEEL THAT TO HAVE TO ALSO FACE ECONOMIC UNCERTAINTIES, THE POSSIBLE WITHDRAWAL OF MFN IS SOMETHING THAT WE DESPERATELY WISH TO AVOID. WE HAVE DONE SOME LATEST ASSESSMENT OF THE HARM TO OUR ECONOMY THAT THIS MIGHT DO AND OUR ASSESSMENTS INDICATE THAT IF MFN WAS WITHDRAWN, THEN OUR ECONOMIC GROWTH WOULD BE HALVED AND OUR UNEMPLOYMENT RATE WOULD BE TREBLE. I'LL ANSWER A FEW QUESTIONS. BEFORE I DO SO, PERHAPS I CAN SAY THE SAME IN CHINESE.

QUESTION: MRS CHAN, HOW WOULD YOU COUNTER QUESTIONS THAT YOU WOULD ALMOST CERTAINLY HEAR FROM SOME US CONGRESSMEN AND SENATORS THAT IT IS VERY HARD TO RENEW CHINESE MFN WHILE CHINA CHOOSE TO BE GOING ON A HARD-LINE SWING, CRACKING DOWN ON DISSIDENTS AND THE XI YANG CASE?

CS: OUR VIEW HAS CONSISTENTLY BEEN THAT WHILST ON THE SAME HAND, WE ARE CLEARLY VERY CONCERNED ABOUT HUMAN RIGHTS. INDEED, I WOULD GO AS FAR AS TO SAY THAT THERE ARE PROBABLY NO PEOPLE ANYWHERE ON THIS EARTH WHO ARE MORE CONCERNED ABOUT HUMAN RIGHTS THAN PEOPLE IN HONG KONG, PARTICULARLY WITH THE REVERSION OF SOVEREIGNTY TO CHINA IN ABOUT THREE YEARS' TIME. BUT, WE ALSO FEEL THAT USING TRADE SANCTIONS IS NOT THE RIGHT WAY NOR IS IT AN EFFECTIVE WAY OF ENSURING THAT THERE IS IMPROVEMENT IN HUMAN RIGHTS CONDITION IN CHINA. OUR VIEW IS THAT THE WAY TO ACHIEVE THIS OBJECTIVE IS TO CONTINUE TO ENGAGE THE CHINESE TO CONTINUE TO TRADE WITH THEM BECAUSE WE BELIEVE THAT IN THE WAKE OF ECONOMIC PROGRESS, THERE WILL BE, IN FACT, POLITICAL PROGRESS AND PEOPLE WOULD HAVE MORE CHOICES.

QUESTION: MRS CHAN, WHAT DO YOU THINK THE ADVANTAGE OF YOU BEING A CHINESE TO ADVOCATE .... AS A SALESMAN FOR THE CHINESE GOVERNMENT?

CS: I HAVE STATED ON NUMEROUS OCCASIONS THAT I INTEND TO STAY HERE IN HONG KONG BOTH NOW AND AFTER 1997. WE ALL WISH TO CONTINUE TO SEE HONG KONG PROSPER AND IF WE PROSPER, CHINA WILL PROSPER. AND, OBVIOUSLY, IN TERMS OF STABILITY AND PROSPERITY, EXTENSION OF MFN WILL BE THE BEST WAY OF ENSURING THAT CHINA MAKES PROGRESS BOTH IN ITS ECONOMY AND ON THE POLITICAL FRONT AND THAT HONG KONG CAN CONTINUE TO GROW AND ITS PEOPLE CAN CONTINUE TO ENJOY A HIGHER STANDARD OF LIVING.

QUESTION: MRS CHAN, .... TO THE AMERICAN GOVERNMENT AND AMERICAN POLITICIANS, THIS IS NOT JUST ANOTHER TRADE POINT. IT'S A MORAL POINT. AMAZINGLY, HOW CAN WE DO WHAT YOU ARE ASKING US TO DO WITHOUT APPEARING THAT WE'RE COMPROMISING A VERY IMPORTANT MORAL POINT?

CS: I DO NOT DENY THAT THERE IS A MORAL POINT INVOLVED HERE. BUT I WISH TO STRESS AGAIN THAT THE HUMAN RIGHTS FRONT, IMPROVEMENT ON THE HUMAN RIGHTS FRONT CAN BE ACHIEVED BY WAYS OTHER THAN ECONOMIC AND TRADE SANCTIONS. WE KNOW FOR A FACT THAT SANCTIONS ELSEWHERE DO NOT DO THE TRICK. THEY HAVE QUITE THE OPPOSITE EFFECT AND IF WE ALL WISH TO SEE IMPROVEMENT IN THE HUMAN RIGHTS CONDITION IN CHINA, THEN THE WAY TO ACHIEVE THIS IS TO CONTINUE TO ENGAGE THE CHINESE, CONTINUE TO HAVE A WAY OF INFLUENCING CHINESE AND CONTINUE TO GIVE THE PEOPLE IN CHINA MORE CHOICES. WE SEE FOR OURSELVES, FOR EXAMPLE, IN QUANGDONG, THAT BECAUSE THEY ENJOY ECONOMIC GROWTH, THEY NOW HAVE MORE CHOICES. THEY ARE FAR FREER, I WOULD SAY, THAN PEOPLE ELSEWHERE IN THE INTERIOR OF CHINA. SO, OBVIOUSLY, THAT IS THE WAY TO GO.

## CS AGAINST TRADE SANCTIONS

\* \* \* \* \*

HONG KONG PEOPLE ARE CLEARLY VERY CONCERNED ABOUT HUMAN RIGHTS BUT FEEL THAT USING TRADE SANCTIONS IS NOT THE RIGHT WAY NOR IS IT AN EFFECTIVE WAY OF ENSURING THAT THERE IS IMPROVEMENT IN THE HUMAN RIGHTS CONDITION IN CHINA, THE CHIEF SECRETARY, MRS ANSON CHAN, SAID THIS (FRIDAY) AFTERNOON.

SPEAKING TO REPORTERS AT THE CENTRAL GOVERNMENT OFFICES BEFORE HER DEPARTURE FOR AN OFFICIAL VISIT TO THE UNITED STATES, MRS CHAN SAID: "OUR VIEW IS THAT THE WAY TO ACHIEVE THIS OBJECTIVE IS TO CONTINUE TO ENGAGE THE CHINESE TO CONTINUE TO TRADE WITH THEM BECAUSE WE BELIEVE THAT IN THE WAKE OF ECONOMIC PROGRESS, THERE WILL BE, IN FACT, POLITICAL PROGRESS AND PEOPLE WOULD HAVE MORE CHOICES."

MRS CHAN EMPHASISED THAT IMPROVEMENT ON THE HUMAN RIGHTS FRONT COULD BE ACHIEVED BY WAYS OTHER THAN ECONOMIC AND TRADE SANCTIONS.

"WE KNOW FOR A FACT THAT SANCTIONS ELSEWHERE DO NOT DO THE TRICK. THEY HAVE QUITE THE OPPOSITE EFFECT," SHE SAID.

ON THE EFFECT OF MOST FAVOURED NATION (MFN) EXTENSION ON HONG KONG, MRS CHAN SAID: "WE ALL WISH TO CONTINUE TO SEE HONG KONG PROSPER AND IF WE PROSPER, CHINA WILL PROSPER."

"OBVIOUSLY, IN TERMS OF STABILITY AND PROSPERITY, EXTENSION OF MFN WILL BE THE BEST WAY OF ENSURING THAT CHINA MAKES PROGRESS BOTH IN ITS ECONOMY AND ON THE POLITICAL FRONT AND THAT HONG KONG CAN CONTINUE TO GROW AND ITS PEOPLE CAN CONTINUE TO ENJOY A HIGHER STANDARD OF LIVING."

- - - - 0 - - - -

## AIRPORT'S COST CONTROL MECHANISM WORKING WELL

\* \* \* \* \*

THE VERY STRINGENT COST CONTROL MECHANISM THAT THE GOVERNMENT HAS SPECIFICALLY SET UP TO MONITOR EXPENDITURE UNDER THE AIRPORT CORE PROGRAMME (ACP) HAS PROVED TO BE WORKING VERY WELL, THE SECRETARY FOR THE TREASURY, MR DONALD TSANG, SAID TODAY (FRIDAY).

SPEAKING TO A GROUP OF AMERICAN JOURNALISTS IN WASHINGTON DC, USA, MR TSANG SAID THE GOVERNMENT COULD NOW TRIM DOWN ITS FORECAST REQUIREMENT FOR THE SEVEN GOVERNMENT PROJECTS BY \$7.6 BILLION, FROM \$60.1 BILLION ESTIMATED IN EARLY 1992 TO \$52.5 BILLION ESTIMATED IN EARLY 1994.

"THE SUBSTANTIAL SAVING STEMS MAINLY FROM HIGHLY COMPETITIVE TENDERING ON A VERY COST-EFFECTIVE PROGRAMME.

"IT IS ALSO DUE TO REDUCTIONS IN THE LEVELS OF CONTINGENCY ALLOWANCES AND REVISIONS IN OUR CONSTRUCTION INFLATION FORECASTS," HE SAID.

- 6 -

ON U.S. PARTICIPATION IN THE ACP, MR. TSANG NOTED THAT THE AMERICAN PROJECT MANAGEMENT CONSULTANT, INTERNATIONAL BECHTEL INCORPORATED, HAD HELPED CONTRIBUTE TOWARDS THE REMARKABLE PROGRESS TO-DATE.

ANOTHER AMERICAN FIRM, MORGAN STANLEY, HAD SINCE 1990 BEEN APPOINTED AS THE OVERALL ACP FINANCIAL ADVISER, HE SAID.

APART FROM THE TWO CONSULTANCIES, AMERICAN FIRMS HAVE ALSO PARTICIPATED IN OVER 30 OTHER ACP CONSULTANCIES. AMONGST OTHERS, THEY INCLUDE:

- \* THE NEW AIRPORT MASTER PLAN CONSULTANCY (GREINER INCORPORATED);
- \* THE DESIGN CONSULTANCY FOR THE OPERATIONAL WINDSHEAR WARNING SYSTEM (WEATHER INFORMATION TECHNOLOGIES, INC.); AND
- \* THE PROJECT MANAGEMENT CONSULTANCY FOR THE AIR TRAFFIC CONTROL SYSTEM AT THE NEW AIRPORT (HUGHES SYSTEMS PACIFIC LTD).

"ALL IN ALL, OPPORTUNITIES ARE PLENTY FOR PRIVATE SECTOR PARTICIPATION IN HONG KONG'S MAJOR INFRASTRUCTURAL PROJECTS FOR THE COMING YEARS," MR. TSANG SAID.

"HONG KONG WILL CONTINUE TO PROSPER AS WE EMBARK ON OUR AMBITIOUS BUT ESSENTIAL WORKS PROGRAMMES TO BUILD FOR THE FUTURE.

"AND WE CERTAINLY LOOK FORWARD TO GREATER CO-OPERATION WITH AMERICAN FIRMS IN ALL THESE," HE SAID.

- - - - 0 - - - -

#### MORE ASSISTANCE FOR LIVESTOCK FARMERS

\* \* \* \* \*

THE GOVERNMENT HAS PROPOSED A GENEROUS PACKAGE OF MEASURES TO LIVESTOCK FARMERS TO TACKLE THE PROBLEM OF INDISCRIMINATE DUMPING OF LIVESTOCK WASTE WHICH IS SERIOUSLY POLLUTING HONG KONG'S STREAMS AND RIVERS AND POSING HEALTH RISKS.

THE MEASURES HAVE BEEN WORKED OUT AFTER EXTENSIVE CONSULTATION WITH THE LIVESTOCK INDUSTRY AND RELEVANT BODIES INCLUDING THE ENVIRONMENTAL POLLUTION ADVISORY COMMITTEE (NOW RENAMED THE ADVISORY COUNCIL ON THE ENVIRONMENT), AS WELL AS THE ENVIRONMENTAL AFFAIRS PANEL AND BILLS COMMITTEE OF LEGCO.

THEY REPRESENT A MAJOR IMPROVEMENT OVER THOSE IN THE ORIGINAL LIVESTOCK WASTE CONTROL SCHEME INTRODUCED IN 1987. THE CURRENT PROPOSAL SEEKS TO CONTROL LIVESTOCK WASTE DISCHARGE THROUGH A LICENSING SYSTEM.

/PRINCIPAL ASSISTANT .....

PRINCIPAL ASSISTANT SECRETARY FOR PLANNING, ENVIRONMENT AND LANDS, MR WILLIAM HUI, SAID UNDER THE REVISED SCHEME, THE CAPITAL GRANT TO ASSIST FARMERS IN SETTING UP A TREATMENT SYSTEM ON THEIR FARMS HAS BEEN INCREASED SUBSTANTIALLY - IN SOME CASES THE SUM IS DOUBLE - TO REFLECT MORE ACCURATELY THE MARKET COST OF INSTALLING THESE FACILITIES.

A LOW INTEREST LOAN IS ALSO AVAILABLE FROM THE KADOORIE AGRICULTURE AID LOAN FUND TO MEET UP TO 50 PER CENT OF THE COST OF SETTING UP A TREATMENT SYSTEM.

IF A FARMER CHOOSES TO CEASE BUSINESS, AN EX-GRATIA ALLOWANCE WILL BE PAID, THE RATES OF WHICH HAS ALSO BEEN INCREASED.

THE FINANCE COMMITTEE HAS APPROVED AN ADDITIONAL \$53 MILLION TO BRING THE FINANCIAL COMMITMENT FOR CAPITAL GRANTS TO \$115 MILLION.

AN INCREASE IN COMMITMENT BY \$169 MILLION TO \$790 MILLION HAS ALSO BEEN APPROVED FOR THE PAYMENT OF EX-GRATIA ALLOWANCE.

THE 10-YEAR LIVESTOCK WASTE CONTROL SCHEME (1987 - 1997) IS ESTIMATED TO COST \$1,346 MILLION.

MR HUI SAID: "WE HAVE ALSO GONE SOME WAY IN MEETING FARMERS' REQUEST FOR FLEXIBILITY IN SELECTING A TREATMENT SYSTEM AND ALSO THEIR REQUEST FOR A LONGER LEAD TIME TO ACHIEVE THE ULTIMATE DISCHARGE STANDARD."

UNDER THE REVISED SCHEME, FARMERS ARE FREE TO CHOOSE THE SYSTEM MOST APPROPRIATE TO THEIR SITUATION SO LONG AS IT IS ACCEPTED BY THE ENVIRONMENTAL PROTECTION DEPARTMENT (EPD) AS BEING CAPABLE OF ACHIEVING THE ULTIMATE DISCHARGE STANDARD OF 50:50 (MEASURED IN TERMS OF BIOCHEMICAL OXYGEN DEMAND AND SUSPENDED SOLIDS IN WATER).

"MOREOVER, FARMERS WILL BE GIVEN AT LEAST THREE YEARS TO ACHIEVE THIS STANDARD IN THREE PHASES, INITIALLY AT 250:250 AND THEN 100:100 BEFORE ATTAINING THE FINAL LEVEL OF 50:50.

"THE STANDARD HAS BEEN PROVED ACHIEVABLE BY THE TREATMENT METHODS RECOMMENDED BY THE EPD. IN FACT, A NUMBER OF FARMS HAVE USED SUCCESSFULLY THE PIG-ON-LITTER METHOD TO ACHIEVE THE REQUIRED STANDARD," HE SAID.

"HAVING CONSIDERED CAREFULLY FARMERS' VIEWS, WE HAVE ALSO CHANGED THE PROPOSAL OF BANNING ALL LIVESTOCK FARMERS IN THE RESTRICTION AREAS."

OUR INTENTION NOW IS THAT ONLY NEW FARMS AND RE-START FARMS WILL NOT BE PERMITTED TO OPERATE IN A RESTRICTION AREA. THE BAN WILL NOT APPLY TO EXISTING ACTIVE FARMS IN SUCH AREAS SO LONG AS THEY MEET THE LICENSING REQUIREMENTS WITHIN THE SPECIFIED TIME FRAME.

"MOREOVER, FARMERS WHO HAVE APPLIED FOR A CAPITAL GRANT TO SET UP A TREATMENT SYSTEM MAY OPT OUT WITHOUT FORFEITING THEIR RIGHT TO APPLY FOR EX-GRATIA PAYMENT FOR WINDING UP THEIR BUSINESS WITHIN ONE YEAR," MR HUI SAID.

MR HUI SAID THE REVISED SCHEME WAS WORKED OUT AFTER THE INDUSTRY HAD BEEN CONSULTED AT LENGTH IN THE PAST TWO YEARS THROUGH THE LIVESTOCK WASTE DISPOSAL CONSULTATIVE COMMITTEE, WHICH IS WIDELY REPRESENTED BY ALL MAJOR LIVESTOCK FARM BODIES, AND SOME INDIVIDUAL FARMING ORGANISATIONS.

"WE HAVE ALSO CONSULTED RELEVANT ENVIRONMENTAL GROUPS AND HAVE THE GENERAL SUPPORT OF THE LEGCO'S BILLS COMMITTEE WHICH HAD MET SEVEN TIMES TO CONSIDER THE TWO RELEVANT BILLS."

MR HUI SAID THE REVISED PACKAGE WAS GENEROUS ENOUGH TO ASSIST FARMERS IN SETTING UP A TREATMENT SYSTEM THAT WOULD SUIT THEIR REQUIREMENT AND MEET THE DISCHARGE STANDARD.

SUCH FINANCIAL ASSISTANCE IS NOT AVAILABLE TO OTHER INDUSTRIES WHICH ARE REQUIRED TO MEET EVEN MORE STRINGENT ENVIRONMENTAL STANDARDS.

HE EMPHASISED THAT THE WATER QUALITY IN HONG KONG'S WATERCOURSES AND COASTAL WATERS WOULD NOT PERMIT ANY FURTHER RELAXATION OF CONTROL ON LIVESTOCK WASTE NOR WOULD IT BE IN THE PUBLIC INTEREST TO DELAY THE IMPLEMENTATION

DEBATE ON THE TWO RELEVANT BILLS - THE WASTE DISPOSAL (AMENDMENT) BILL 1993 AND THE PUBLIC HEALTH (ANIMALS AND BIRDS) (AMENDMENT) BILL 1993 - WILL RESUME IN THE LEGISLATIVE COUNCIL NEXT WEDNESDAY WHEN THE BILLS ARE TABLED FOR SECOND READING.

SUBJECT TO THE PASSAGE OF THE BILLS, THE REVISED CONTROL SCHEME IS EXPECTED TO BE INTRODUCED THIS SUMMER.

----- 0 -----

PETITION ON INTERIM MEASURE ON  
TRANSFER TO LOCAL CONDITION OF SERVICE

\* \* \* \* \*

IN RESPONSE TO THE PETITION STAGED BY TWO STAFF ASSOCIATIONS OF THE BUILDINGS DEPARTMENT TODAY (FRIDAY), A CIVIL SERVICE BRANCH SPOKESMAN URGED MEMBERS OF THE ASSOCIATIONS TO REMAIN CALM.

HE SAID THE GOVERNMENT UNDERSTOOD THE CONCERNS OF THE STAFF, WHICH HAD BEEN FULLY AND FAITHFULLY REFLECTED BY THE DIRECTOR OF BUILDINGS.

"TO ADDRESS THOSE CONCERNS AND THOSE OF STAFF IN OTHER DEPARTMENTS, WE HAVE PUT FORWARD A PACKAGE TO THE SENIOR NON-EXPATRIATE OFFICERS ASSOCIATION (SNEOA), THE ASSOCIATION OF EXPATRIATE CIVIL SERVANTS AND ALSO TO THE LEGISLATIVE COUNCIL PANEL ON PUBLIC SERVICE," THE SPOKESMAN SAID.

"UNFORTUNATELY, HOWEVER, THE SNEOA HAS REJECTED THE PACKAGE. AS A RESULT, THE LEGISLATIVE COUNCIL HAS EXTENDED THE PUBLIC OFFICERS (VARIATION OF CONDITIONS OF SERVICE) (TEMPORARY PROVISIONS) ORDINANCE.

/"THIS MEANS .....

- 9 -

"THIS MEANS THAT NO TRANSFER TO LOCAL TERMS IS ALLOWED TO TAKE PLACE AT LEAST UNTIL JULY 6 AND CERTAIN ELEMENTS OF OUR PACKAGE CAN THEREFORE NOT BE IMPLEMENTED," HE SAID.

THE SPOKESMAN NOTED THAT THE GOVERNMENT WOULD NOW HAVE TO RECONSIDER WHAT COULD BE DONE TO REACH A SETTLEMENT.

"CERTAINLY IN THIS PROCESS WE SHALL CONSIDER VERY CAREFULLY STAFFS' VIEWS. MEANWHILE, WE WILL, AS PRACTICAL, TAKE INTO ACCOUNT THE CIRCUMSTANCES OF INDIVIDUAL DEPARTMENT," HE ADDED.

- - - - 0 - - - -

#### DIRECTOR REFLECTS STAFF CONCERN OVER LOCALISATION

\* \* \* \* \*

COMMENTING ON THE RALLY OF TWO STAFF ASSOCIATIONS OF THE BUILDINGS DEPARTMENT AT THE CENTRAL GOVERNMENT OFFICES THIS (FRIDAY) EVENING, THE DIRECTOR OF BUILDINGS, MRS HELEN YU, URGED COLLEAGUES OF HER DEPARTMENT TO BE PATIENT AND TO CONTINUE TO SERVE THE PUBLIC WITH THEIR USUAL PROFESSIONAL EFFICIENCY.

NOTING THE CONCERNS OF STAFF AND STAFF ASSOCIATIONS OVER THE APPLICATION TO THE BUILDINGS DEPARTMENT OF THE GOVERNMENT'S INTERIM MEASURE UNDER THE LOCALISATION POLICY, MRS YU SAID: "I CAN UNDERSTAND THE SENTIMENTS OF MY COLLEAGUES. I HAVE BEEN IN DIALOGUE WITH THEM REGULARLY.

"MEANWHILE, I HAVE PERSONALLY REFLECTED ALL THEIR REASONABLE AND LEGITIMATE CONCERNS TO THE SECRETARY FOR THE CIVIL SERVICE.

"CIVIL SERVICE BRANCH HAS BEEN MEETING WITH ME TO RESOLVE MATTERS: WE ARE ALL AWARE OF THE NEED FOR SETTLEMENT OF THESE DELICATE AND COMPLEX ISSUES AS SOON AS PRACTICABLE.

"MY COLLEAGUES KNOW THAT THEY CAN COME TO ME TO AIR THEIR VIEWS AND THAT I WILL TRY MY LEVEL BEST TO WORK OUT WITH THEM POSITIVE SOLUTIONS," SHE ADDED.

- - - - 0 - - - -

#### CONSUMER PRICE INDICES FOR MARCH 1994

\* \* \* \* \*

THE CONSUMER PRICE INDEX (A) LAST MONTH WAS 8.0% HIGHER THAN IN MARCH 1993, ACCORDING TO FIGURES RELEASED TODAY (FRIDAY) BY THE CENSUS AND STATISTICS DEPARTMENT.

THE CORRESPONDING INCREASE IN THE CPI(A) WAS 7.8% IN FEBRUARY. THE SLIGHTLY FASTER INCREASE IN MARCH WAS MAINLY INFLUENCED BY THE PRICES OF FRESH VEGETABLES.

TAKING THE FIRST THREE MONTHS TOGETHER, THE CPI(A) ROSE BY 7.3% OVER THE SAME PERIOD IN 1993. THIS WAS CONSIDERABLY LOWER THAN THE AVERAGE INCREASE OF 8.5% RECORDED IN 1993 AND THE FORECAST ALSO OF 8.5% FOR 1994 AS A WHOLE.

/THE CPI(B) .....

THE CPI(B) AND THE HANG SENG CPI WERE HIGHER BY 8.2% AND 9.2% RESPECTIVELY IN MARCH 1994 THAN IN THE SAME MONTH LAST YEAR. THE CORRESPONDING INCREASES IN FEBRUARY 1994 WERE 8.1% AND 9.8%.

THE COMPOSITE CPI, WHICH IS COMPILED BASED ON THE COMBINED EXPENDITURE PATTERN OF HOUSEHOLDS COVERED BY THE THREE CPIS, SHOWED AN INCREASE OF 8.4% IN MARCH 1994 OVER THE SAME MONTH IN 1993. THIS WAS THE SAME AS THE CORRESPONDING INCREASE IN FEBRUARY 1994.

COMPARING MARCH 1994 WITH MARCH 1993, RELATIVELY SLOWER PRICE INCREASES THAN THE OVERALL AVERAGE WERE RECORDED FOR FUEL AND LIGHT (2.4% IN THE CPI(A) AND 2.5% IN THE CPI(B)); DURABLE GOODS (2.9% AND 3.0%); CLOTHING AND FOOTWEAR (5.0% AND 4.7%); ALCOHOLIC DRINKS AND TOBACCO (5.7% AND 6.3%); FOOD (EXCLUDING MEALS AT RESTAURANTS) (5.9% AND 5.8%); AND MISCELLANEOUS GOODS (6.5% AND 5.7%).

ON THE OTHER HAND, RELATIVELY FASTER PRICE INCREASES THAN THE OVERALL AVERAGE WERE RECORDED FOR MISCELLANEOUS SERVICES (11.4% IN THE CPI(A) AND 10.6% IN THE CPI(B)); TRANSPORT (10.2% AND 9.7%); AND HOUSING (9.9% AND 10.7%).

AS FOR MEALS AT RESTAURANTS, THE CORRESPONDING INCREASE WAS 8.3% IN THE CPI(A) AND 8.2% IN THE CPI(B).

COMPARING MARCH 1994 WITH FEBRUARY 1994, THE CPI(A) DECREASED BY 0.1% WHILE THE CPI(B) INCREASED BY 0.1%. HOWEVER, THIS COMPARISON COULD HAVE BEEN AFFECTED BY SEASONAL FACTORS.

FOR THE FIRST QUARTER OF 1994, THE CPI(A) AND CPI(B) WERE, ON AVERAGE, HIGHER BY 7.3% AND 7.7% RESPECTIVELY THAN IN THE SAME QUARTER LAST YEAR.

FOR THE TWELVE MONTHS ENDED MARCH 1994, THE CPI(A) AND CPI(B) WERE, ON AVERAGE, HIGHER BY 8.1% AND 8.3% RESPECTIVELY THAN IN THE PRECEDING TWELVE-MONTH PERIOD.

SEASONALLY ADJUSTED SERIES ARE ALSO AVAILABLE FOR THE CPIS. THE DESEASONALISED CPI(A) AND CPI(B) INCREASED AT AN AVERAGE RATE OF 0.5% AND 0.6% RESPECTIVELY PER MONTH DURING THE THREE MONTHS ENDED MARCH 1994.

FURTHER DETAILS ARE SHOWN IN TABLES 1-2 AND CHARTS 1-4.

MORE DETAILS ARE GIVEN IN THE "CONSUMER PRICE INDEX REPORT" FOR MARCH 1994, WHICH IS AVAILABLE AT \$16.5 PER COPY FROM THE GOVERNMENT PUBLICATIONS CENTRE, GENERAL POST OFFICE BUILDING, GROUND FLOOR, CONNAUGHT PLACE, HONG KONG; OR FROM THE PUBLICATIONS SECTION OF THE CENSUS AND STATISTICS DEPARTMENT, 19TH FLOOR, WANCHAI TOWER, 12 HARBOUR ROAD, WAN CHAI, HONG KONG.

FOR LOCAL AND OVERSEAS MAILINGS, CONTACT SHOULD BE MADE WITH THE INFORMATION SERVICES DEPARTMENT, FRENCH MISSION BUILDING, 1 BATTERY PATH, HONG KONG.

FOR ENQUIRIES ABOUT THE INDICES, PLEASE TELEPHONE THE CONSUMER PRICE INDEX SECTION OF THE CENSUS AND STATISTICS DEPARTMENT AT 805 6403.

DETAILS REGARDING THE HANG SENG CPI ARE CONTAINED IN THE HANG SENG CPI REPORT ISSUED BY THE ECONOMIC RESEARCH DEPARTMENT OF HANG SENG BANK LTD.

Table 1 Consumer Price Indices and Rates of Increase for March 1994  
(Oct. 89 - Sep. 90 = 100)

Component	CPI (A)		CPI (B)		Hang Seng CPI		Composite CPI	
	Index for Mar 94	% change over Mar 93	Index for Mar 94	% change over Mar 93	Index for Mar 94	% change over Mar 93	Index for Mar 94	% change over Mar 93
Food	139.0	+7.2	141.0	+7.3	142.4	+8.3	140.4	+7.4
Meals bought away from home	150.3	+8.3	149.9	+8.2	149.6	+9.7	150.0	+8.6
Food, excluding meals bought away from home	127.8	+5.9	128.7	+5.8	130.1	+5.5	128.5	+5.8
Housing	158.3	+9.9	160.3	+10.7	165.0	+13.7	161.2	+11.4
Fuel and light	122.0	+2.4	121.5	+2.5	122.2	+2.8	121.9	+2.5
Alcoholic drinks and tobacco	183.9	+5.7	174.5	+6.3	170.2	+6.4	178.7	+6.0
Clothing and footwear	125.1	+5.0	125.2	+4.7	133.4	+3.3	127.9	+4.3
Durable goods	111.4	+2.9	111.1	+3.0	115.6	+2.1	112.5	+2.7
Miscellaneous goods	129.3	+6.5	126.4	+5.7	124.9	+5.0	127.1	+5.8
Transport	141.5	+10.2	141.7	+9.7	142.2	+9.0	141.7	+9.7
Miscellaneous services	153.1	+11.4	148.4	+10.6	140.5	+9.2	147.5	+10.4
All items	142.5	+8.0	143.0	+8.2	145.3	+9.2	143.4	+8.4

The 1989/90-based consumer price indices are based on the expenditure patterns derived from the 1989/90 Household Expenditure Survey. The CPI(A) is based on the expenditure pattern of about 50% of urban households in Hong Kong, which had an average monthly expenditure of \$2,500-\$9,999 in 1989/90. The CPI(B) is based on the expenditure pattern of the next 30% of urban households, which had an average monthly expenditure of \$10,000-\$17,499 in the same period. The Hang Seng CPI is based on the expenditure pattern of the next 10% of urban households, which had an average monthly expenditure of \$17,500-\$37,499 in 1989/90.

Whereas the CPI(A), CPI(B) and Hang Seng CPI are based on the expenditure patterns of groups of households with different magnitudes of household expenditure, the Composite CPI is compiled based on the expenditure pattern of all these households taken together. Thus, while the CPI(A), CPI(B) and Hang Seng CPI show the impact of consumer price changes on different groups of households, the Composite CPI shows the impact of consumer price changes on the household sector generally.

Table 2 Consumer Price Indices for January 1991 - March 1994  
(Oct. 89 - Sep. 90 = 100)

<u>Year/month</u>	<u>CPI(A)</u>	<u>CPI(B)</u>	<u>Hang Seng CPI</u>	<u>Composite CPI</u>	
1991	January	108.3	108.4	108.6	108.4
	February	110.3	110.1	110.2	110.2
	March	111.9	111.1	110.7	111.3
	April	113.9	113.0	112.0	113.1
	May	114.0	113.6	113.4	113.7
	June	114.6	114.1	113.9	114.2
	July	115.4	114.8	113.9	114.8
	August	116.0	115.3	114.6	115.4
	September	116.8	116.1	115.8	116.3
	October	117.2	116.8	117.4	117.1
	November	117.7	117.6	118.7	117.9
	December	118.1	118.3	118.5	118.3
1992	January	119.7	119.3	119.4	119.5
	February	121.8	121.2	121.0	121.4
	March	122.5	121.9	121.8	122.1
	April	124.0	123.4	122.9	123.5
	May	124.0	123.8	124.2	124.0
	June	125.3	125.1	125.2	125.2
	July	125.5	125.4	125.4	125.4
	August	125.6	125.9	125.8	125.8
	September	128.3	127.9	127.5	128.0
	October	128.4	128.4	128.6	128.5
	November	128.5	129.0	129.9	129.0
	December	129.3	129.8	130.0	129.7
1993	January	131.8	131.6	131.5	131.7
	February	132.4	132.2	132.0	132.2
	March	132.0	132.2	133.1	132.4
	April	133.5	133.9	134.5	133.9
	May	134.5	134.8	136.3	135.1
	June	136.0	135.9	137.1	136.3
	July	135.8	136.1	136.9	136.2
	August	136.3	136.6	137.4	136.7
	September	138.4	138.3	139.2	138.6
	October	140.0	139.6	140.7	140.0
	November	139.4	139.9	142.2	140.3
	December	140.4	140.9	143.3	141.3
1994	January	140.0	140.7	143.4	141.1
	February	142.7	142.9	144.9	143.3
	March	142.5	143.0	145.3	143.4

Chart 1 Year-on-year Rates of Increase in CPI(A)

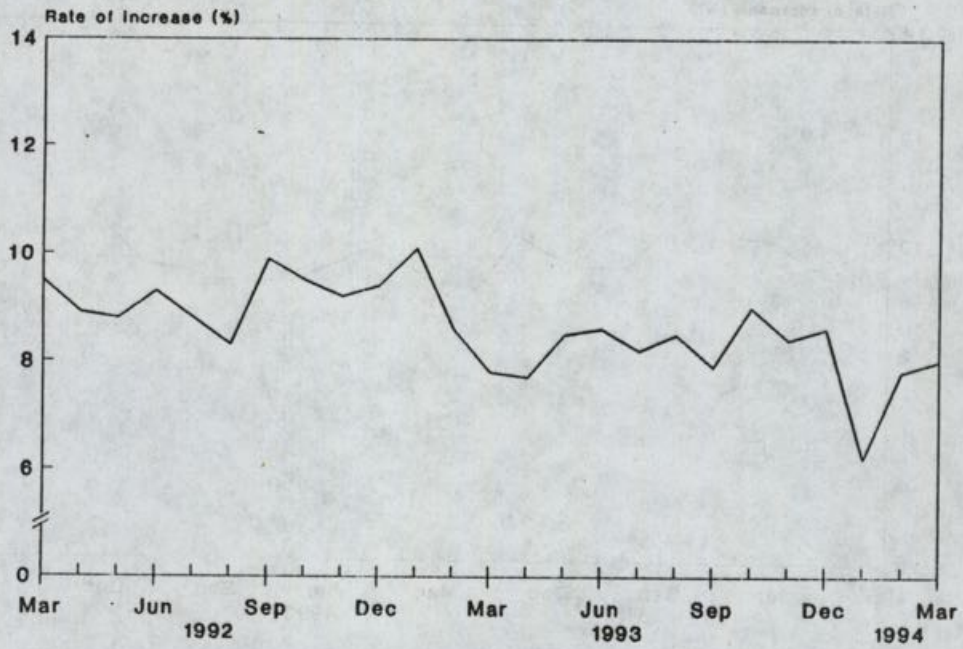
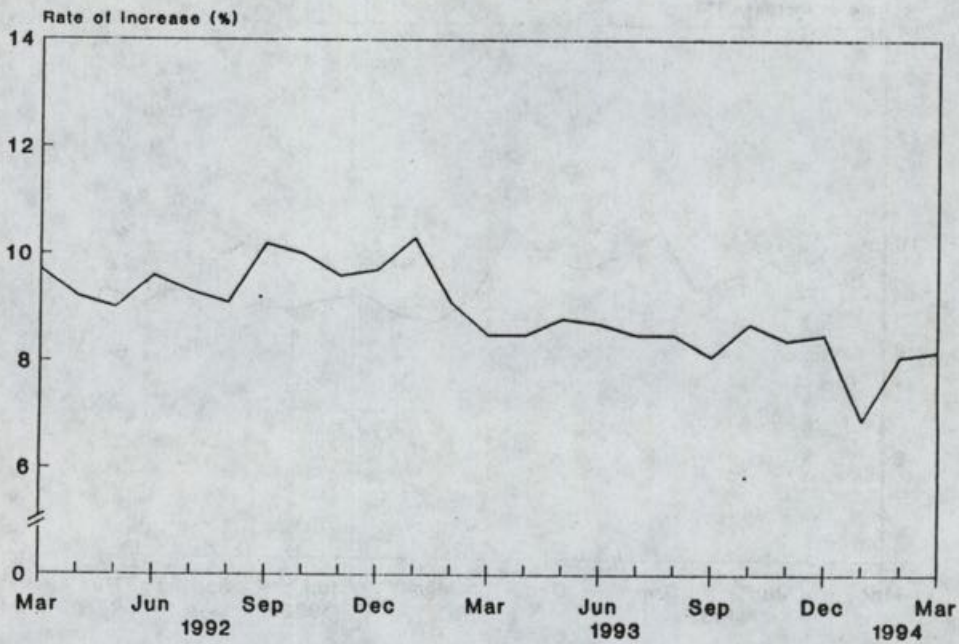


Chart 2 Year-on-year Rates of Increase in CPI(B)



/Chart 3 .....

Chart 3 Year-on-year Rates of Increase in Hang Seng CPI

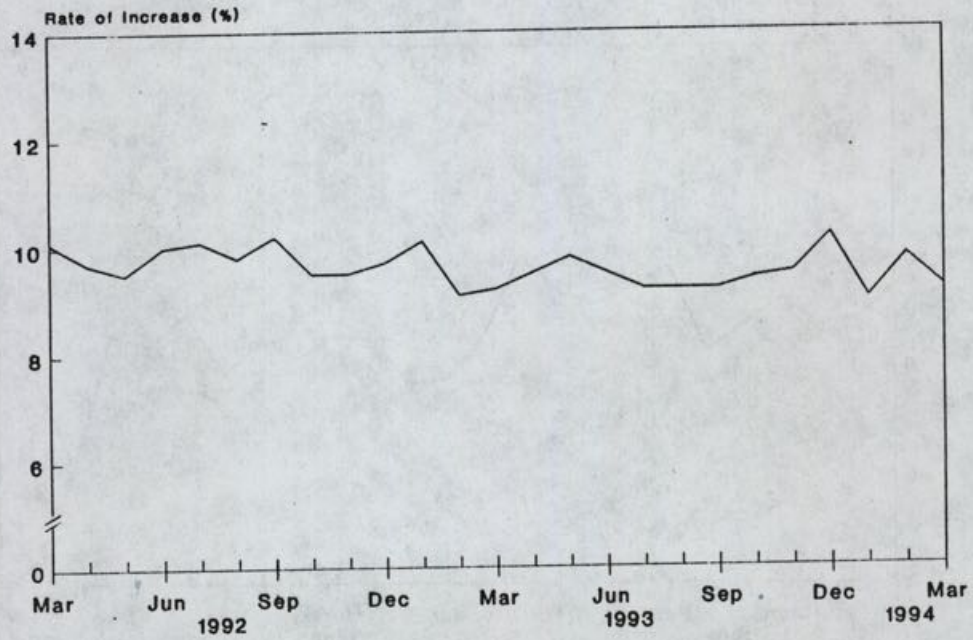
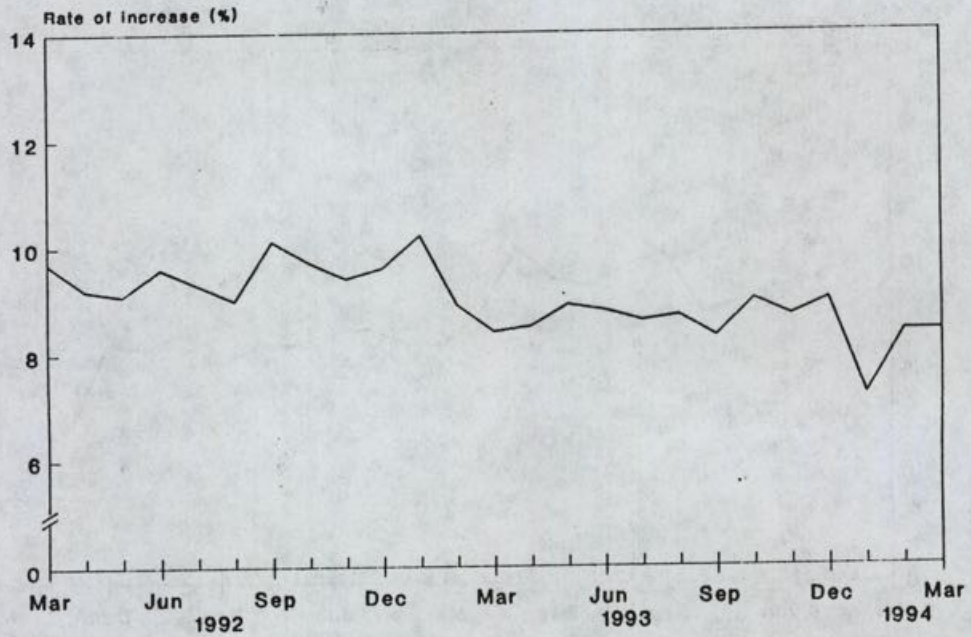


Chart 4 Year-on-year Rates of Increase in Composite CPI



MOST PEOPLE SATISFIED WITH PRESENT SITUATION: POLL

\* \* \* \* \*

A BI-MONTHLY SURVEY CONDUCTED BY THE HOME AFFAIRS BRANCH HAS REVEALED THAT 76 PER CENT OF THE RESPONDENTS WERE SATISFIED WITH THE PRESENT SITUATION IN HONG KONG.

THE FIGURE IS HIGHER THAN THE 74 PER CENT RECORDED IN THE JANUARY SURVEY.

RELEASING THE FINDINGS OF THE REGULAR TELEPHONE OPINION POLL IN MARCH, A SPOKESMAN FOR THE HOME AFFAIRS BRANCH SAID TODAY (FRIDAY) THAT PEOPLE'S EXPECTATION OF THE FUTURE HAD ALSO IMPROVED.

IN THIS CONNECTION, 67 PER CENT OF RESPONDENTS BELIEVED THAT THE SITUATION WOULD EITHER IMPROVE IN THE NEXT 12 MONTHS OR STAY ABOUT THE SAME. THIS COMPARED WITH 63 PER CENT IN THE LAST POLL.

THE PERCENTAGE OF RESPONDENTS WHO SAID THEY WERE CONFIDENT THAT HONG KONG WOULD CONTINUE TO BE PROSPEROUS AND STABLE REMAINED THE SAME AT 61 PER CENT.

OF THE THREE MOST-MENTIONED PROBLEMS FACING THE TERRITORY, "HOUSING-RELATED PROBLEMS" HAD REPLACED THE CONCERN FOR "HONG KONG FUTURE" TO TOP THE LIST AT 43 PER CENT.

THIS WAS FOLLOWED BY "HONG KONG FUTURE" (A DROP FROM 42 PER CENT TO 35 PER CENT) AND "TRANSPORT-RELATED PROBLEMS" WHICH REMAINED THE SAME AT 25 PER CENT.

AS TO SATISFACTION WITH THE OVERALL PERFORMANCE OF THE GOVERNMENT AND CIVIL SERVANTS' WORKING ATTITUDE, THE PERCENTAGE REMAINED MORE OR LESS THE SAME AT 48 PER CENT AND 56 PER CENT RESPECTIVELY.

THE POLL WAS THE 51ST IN THE SERIES TO GAUGE THE TREND OF PUBLIC OPINION IN RESPECT OF PERCEIVED PROBLEMS IN HONG KONG AND THE COMMUNITY'S EXPECTATION OF THE GENERAL SITUATION.

A TOTAL OF 2,609 HOUSEHOLDS WERE SUCCESSFULLY CONTACTED IN THIS SURVEY WHICH WAS CONDUCTED BETWEEN MARCH 14 AND 18.

WITHIN THE HOUSEHOLD OF A SELECTED TELEPHONE NUMBER, A RESPONDENT AGED BETWEEN 15 AND 64 WAS RANDOMLY CHOSEN FOR INTERVIEW.

FRIDAY, APRIL 22, 1994

- 16 -

NOISE MEASUREMENTS AT HK STADIUM RELEASED

\* \* \* \* \*

IN VIEW OF MEDIA AND PUBLIC INTEREST IN NOISE MEASUREMENTS TAKEN AT THE CONCERTS TO BE HELD FROM APRIL 22 TO 24 AT THE HONG KONG STADIUM, THE ENVIRONMENTAL PROTECTION DEPARTMENT INTENDS TO RELEASE THE RESULTS OF THE MEASUREMENTS ON THE DAY FOLLOWING THAT ON WHICH THEY ARE TAKEN.

THE MEASUREMENTS ARE TAKEN DURING REHEARSALS AND THE CONCERTS.

THE NOISE MEASUREMENTS RECORDED BY THE DEPARTMENT AT YESTERDAY'S REHEARSAL AT THE HONG KONG STADIUM WILL BE FAXED.

SINCE THE NOISE LEVELS HAVE EXCEEDED THOSE STIPULATED IN THE NOISE CONTROL ORDINANCE, THE DEPARTMENT WILL LAY INFORMATION BEFORE THE COURT WITH A VIEW TO ISSUING WEMBLEY INTERNATIONAL WITH A SUMMONS.

- - - - 0 - - - -

GOOD START FOR GREEN MANAGER SCHEME

\* \* \* \* \*

THE GREEN MANAGER SCHEME INTRODUCED BY THE GOVERNMENT TO PROMOTE GREEN HOUSEKEEPING WITHIN THE ADMINISTRATION HAS MADE AN ENCOURAGING START, THE SECRETARY FOR PLANNING, ENVIRONMENT AND LANDS, MR TONY EASON, SAID TODAY (FRIDAY).

ADDRESSING A WORKSHOP FOR GREEN MANAGERS, MR EASON SAID MANY OF THE GREEN MANAGERS HAD ALREADY STARTED THE GREEN HOUSEKEEPING PROGRAMME AND MORE ATTENTION WAS BEING PAID TO THE IMPACT GOVERNMENT ACTIVITIES HAD ON THE ENVIRONMENT.

THE SCHEME, ANNOUNCED BY THE GOVERNOR IN HIS LAST POLICY ADDRESS, INVOLVES THE APPOINTMENT OF SENIOR STAFF AT ALL POLICY BRANCHES AND DEPARTMENTS AS GREEN MANAGERS TO IMPLEMENT AND PROMOTE GREEN HOUSEKEEPING.

THE WORKSHOP WAS ORGANISED BY THE PLANNING, ENVIRONMENT AND LANDS BRANCH TO PROVIDE AN OPPORTUNITY FOR ALL GREEN MANAGERS TO FERTILISE EXPERIENCE.

MR EASON SAID A WORKING GROUP COMPRISING GREEN MANAGERS FROM A REPRESENTATIVE SAMPLE OF BRANCHES AND DEPARTMENTS HAD BEEN SET UP TO REVIEW PROGRESS, DISCUSS PROBLEMS AND RECOMMEND WAYS OF IMPROVEMENTS.

HE SAID IN THE NEXT PHASE OF THE GREEN MANAGER SCHEME, THE GOVERNMENT WOULD BE LOOKING AT THE DEVELOPMENT AND APPLICATION OF AN ENVIRONMENTAL MANAGEMENT SYSTEM PROGRESSIVELY IN DIFFERENT PARTS OF THE GOVERNMENT.

TWO GOVERNMENT DEPARTMENTS, THE ELECTRICAL AND MECHANICAL SERVICES DEPARTMENT AND THE PLANNING DEPARTMENT, ARE CURRENTLY INVOLVED IN A PILOT STUDY ON DEVELOPING A COMPREHENSIVE ENVIRONMENTAL MANAGEMENT SYSTEM.

- - - - 0 - - - -

DESIGNATION OF POLLING STATIONS

\* \* \* \* \*

A LIST OF POLLING STATIONS FOR THE NEXT DISTRICT BOARD ELECTIONS IS PUBLISHED IN A SPECIAL SUPPLEMENT TO THE GAZETTE TODAY (FRIDAY).

THIS FOLLOWS A REVIEW ON POLLING STATIONS FOR GEOGRAPHICAL CONSTITUENCY ELECTIONS AND BY-ELECTIONS, TO TAKE ACCOUNT OF THE NEWLY DELINEATED DISTRICT BOARD CONSTITUENCY BOUNDARIES.

THERE WILL BE A TOTAL OF 440 POLLING STATIONS FOR THE 346 NEW DISTRICT BOARD CONSTITUENCIES.

AS THE \* PROPOSED URBAN COUNCIL AND REGIONAL COUNCIL CONSTITUENCIES ARE BEING DELINEATED, THE POLLING STATIONS IN RESPECT OF THOSE CONSTITUENCIES WILL BE STIPULATED IN THE FINAL REGISTER OF ELECTORS TO BE PUBLISHED LATER IN THE YEAR.

THE LIST OF THE DESIGNATED POLLING STATIONS AND THE MAPS WILL BE AVAILABLE FOR PUBLIC INSPECTION AT THE REGISTRATION AND ELECTORAL OFFICE.

A LIST OF THE STATIONS IN EACH DISTRICT AND THE RELEVANT MAP WILL ALSO BE AVAILABLE AT THE RESPECTIVE DISTRICT OFFICES.

EACH ELECTOR WILL BE NOTIFIED BY END OF NEXT MONTH OF THE NEW DISTRICT BOARD CONSTITUENCY AND POLLING STATION TO WHICH HE HAS BEEN REALLOCATED.

- - - - 0 - - - -

BOARD AMENDS DRAFT TUEN MUN OUTLINE ZONING PLAN

\* \* \* \* \*

THE TOWN PLANNING BOARD TODAY (FRIDAY) ANNOUNCED AMENDMENTS TO THE DRAFT TUEN MUN OUTLINE ZONING PLAN.

"MAJOR AMENDMENTS INCLUDE REZONING THE AREAS EAST OF THE EXISTING CEMENT PLANT IN TUEN MUN WEST FROM INDUSTRIAL AND SEWAGE TREATMENT PLANT DEVELOPMENTS TO THE DEVELOPMENT OF A RIVER TRADE TERMINAL AND A SPECIAL INDUSTRIES AREA.

"THE PROPOSAL IS RECOMMENDED IN A CONSULTANCY STUDY FOR THE AREAS AND IN THE PORT AND AIRPORT DEVELOPMENT STRATEGY," A SPOKESMAN FOR THE BOARD SAID.

THE AREAS NORTH OF TUEN MUN ROAD IN TUEN MUN WEST HAVE ALSO BEEN REZONED TO PROVIDE FOR "GOVERNMENT/INSTITUTION/COMMUNITY" (G/IC) USES, INCLUDING A PHYSICAL MODEL LABORATORY AND TUEN MUN GOVERNMENT DEPOT, SERVICE RESERVOIRS AND OPEN SPACES.

IN ADDITION, SITES FOR "GREEN BELTS" AND A CONTAINER STORAGE AND REPAIR DEPOT HAVE BEEN DESIGNATED.

"AN AREA TO THE NORTHWEST OF BUTTERFLY ESTATE HAS BEEN REZONED TO 'OTHER SPECIFIED USES' ANNOTATED 'PUBLIC RECREATION AND SPORTS CENTRE' TO FACILITATE THE DEVELOPMENT OF A RECREATION AND SPORTS CENTRE BY THE REGIONAL COUNCIL FOR THE PROVISION OF GOLFING, HORSE-RIDING AND OTHER SPORTS AND RECREATIONAL FACILITIES TO THE PUBLIC," THE SPOKESMAN SAID.

ANOTHER AMENDMENT IS TO RESERVE A SIZABLE SITE EAST OF SIU HONG COURT FOR TERTIARY EDUCATION DEVELOPMENT BY LINGNAN COLLEGE WITH RESIDENTIAL AND OTHER USE IN THE SURROUNDING.

"TWO PIECES OF LAND NEAR SO KWUN WAT AND HONG KONG GOLD COAST HAVE BEEN REZONED TO 'COMPREHENSIVE DEVELOPMENT AREA' TO ENABLE BETTER CONTROL ON FUTURE DEVELOPMENT IN THE AREA," THE SPOKESMAN ADDED.

THE LAND EAST OF THE HONG KONG GOLD COAST HOTEL HAS ALSO BEEN REZONED TO INCLUDE AREAS FOR COMPREHENSIVE DEVELOPMENT, "G/IC", LRT TERMINUS, RESIDENTIAL AND OPEN SPACE USES.

MEANWHILE, THE AREAS WEST OF HANFORD GARDEN HAVE BEEN REZONED TO INCLUDE "G/IC" USES, A MULTI-STOREY LORRY OR CAR PARK AND AN ELECTRICITY SUB-STATION.

TO FACILITATE A PRIVATE SECTOR PARTICIPATION SCHEME HOUSING DEVELOPMENT, THE AREA NORTH OF SUN TUEN MUN CENTRE HAS BEEN REZONED TO "RESIDENTIAL (GROUP A)" AND "G/IC". THE AREA TO THE NORTH OF TIN KING ESTATE HAS ALSO BEEN REZONED TO "RESIDENTIAL (GROUP A)".

OTHER AMENDMENTS INCLUDE REZONING THE AREAS OPPOSITE THE CEMENT PLANT IN TUEN MUN WEST AND SOUTH OF THE CREMATORIUM TO "GREEN BELTS", THE AREAS ON BOTH SIDES OF LUNG MUN ROAD NEAR WU TIP WAN TO "INDUSTRIAL", "G/IC", AND "GREEN BELT", AND THE SITES ON THE EASTERN SIDE OF CASTLE PEAK ROAD OPPOSITE CHI LOK FA YUEN AND TO THE SOUTHEAST OF HONG KONG GOLD COAST FOR ELECTRICITY SUB-STATIONS.

THE AMENDMENT PLAN (NO. S/TM/S) IS NOW AVAILABLE FOR PUBLIC INSPECTION UNTIL JUNE 22 AT:

- \* PLANNING DEPARTMENT,  
16TH FLOOR, MURRAY BUILDING,  
GARDEN ROAD,  
HONG KONG;
- \* TUEN MUN AND YUEN LONG DISTRICT PLANNING OFFICE,  
LEVEL 11, TOWER 1, METROPLAZA,  
223 HING FONG ROAD, KWAI CHUNG,  
NEW TERRITORIES; AND
- \* TUEN MUN DISTRICT OFFICE,  
SECOND FLOOR, TUEN MUN GOVERNMENT OFFICES,  
1 TUEN HI ROAD,  
TUEN MUN.

ANY PERSON AFFECTED BY THE AMENDMENTS MAY SUBMIT WRITTEN OBJECTIONS TO THE SECRETARY OF THE TOWN PLANNING BOARD, C/O PLANNING DEPARTMENT, MURRAY BUILDING, GARDEN ROAD, HONG KONG ON OR BEFORE JUNE 22.

COPIES OF THE AMENDMENT PLAN ARE AVAILABLE FOR SALE AT THE SURVEY AND MAPPING OFFICE, LANDS DEPARTMENT, 14TH FLOOR, MURRAY BUILDING AND THE KOWLOON MAP SALES OFFICE, 382 NATHAN ROAD, KOWLOON.

TOWN PLANNING (AMENDMENT) ORDINANCE 1994 ENACTED  
\* \* \* \* \*

THE TOWN PLANNING (AMENDMENT) ORDINANCE 1994, WHICH INTRODUCES TWO TECHNICAL AMENDMENTS TO THE TOWN PLANNING ORDINANCE, WAS ENACTED TODAY (FRIDAY), A SPOKESMAN FOR THE PLANNING DEPARTMENT SAID.

EXPLAINING THE BACKGROUND OF THE AMENDMENTS, THE SPOKESMAN SAID 30 DEVELOPMENT PERMISSION AREA (DPA) PLANS WOULD CEASE TO TAKE EFFECT UPON BEING REPLACED BY OUTLINE ZONING PLANS (OZPS) WHICH WERE SCHEDULED FOR GAZETTING IN MID-1994.

HOWEVER, THIS WOULD POSE A PROBLEM FOR THOSE DPA PLANNING APPLICATIONS WHICH ARE PENDING CONSIDERATION OR REVIEW BY THE TOWN PLANNING BOARD ON THE DATE OF GAZETTING OF THE OZPS.

THIS WILL ALSO APPLY TO APPLICATIONS PENDING APPEAL TO THE TOWN PLANNING APPEAL BOARD.

"THE FIRST AMENDMENT, THEREFORE, IS TO INCLUDE A TRANSITIONAL PROVISION IN THE ORDINANCE TO EMPOWER THE TWO BOARDS TO CONSIDER AND DETERMINE SUCH PLANNING APPLICATIONS AND APPEALS."

THE SPOKESMAN ALSO EXPLAINED THAT UNDER THE EXISTING ORDINANCE, THE PLANNING AUTHORITY HAS THE POWER TO ENTER LAND WITH UNAUTHORISED DEVELOPMENTS TO TAKE STEPS TO DISCONTINUE SUCH DEVELOPMENTS, TO PREVENT ADVERSE EFFECTS OR TO REINSTATE THE LAND.

THE PLANNING AUTHORITY IS ALSO EMPOWERED TO REMOVE THE PROPERTY, SUCH AS ITEMS OF PLANT AND MACHINERY, SCRAP METAL, ABANDONED VEHICLES OR CONTAINERS, REMAINING ON THE LAND BEFORE THE NECESSARY REMEDIAL WORK CAN BE CARRIED OUT.

THE SECOND AMENDMENT, THEREFORE, AFFIRMS THE POWER OF THE PLANNING AUTHORITY TO TAKE POSSESSION, REMOVE, DETAIN AND DISPOSE OF PROPERTY REMAINING ON THE LAND WHERE REMEDIAL WORK HAS TO BE CARRIED OUT.

DETAILED PROCEDURES WILL BE SET OUT IN REGULATIONS TO BE MADE BY THE GOVERNOR IN COUNCIL, HE SAID.

- - - - 0 - - - -

LICENCE FEES FOR HOTELS AND GUESTHOUSES TO BE REVISED  
\* \* \* \* \*

THE FEES FOR THE ISSUE OR RENEWAL OF LICENCES AND CERTIFICATES OF EXEMPTION TO HOTELS AND GUESTHOUSES WILL GO UP BY 20 PER CENT FROM MAY 26 TO HELP COVER THE INCREASE IN ADMINISTRATIVE COSTS.

THE NEW RATES ARE SET OUT IN THE HOTEL AND GUESTHOUSE ACCOMMODATION (FEES) (AMENDMENT) REGULATION 1994, WHICH WAS GAZETTED TODAY (FRIDAY).

A SPOKESMAN FOR THE CITY AND NEW TERRITORIES ADMINISTRATION (CNTA) SAID THESE FEES WERE SUBJECT TO REVIEW ONCE A YEAR.

HE POINTED OUT THAT THE FEES FOR THE ISSUE OR RENEWAL OF LICENCES OR CERTIFICATES OF EXEMPTION WERE INTRODUCED IN JUNE 1991 AND WAS LAST REVISED IN JANUARY 1993.

"IN ORDER TO COVER THE COST INCREASE, IT IS NECESSARY TO INCREASE THE FEES BY 20 PER CENT WITH EFFECT FROM MAY 26," HE ADDED.

THE NEW FEES FOR THE ISSUE OR RENEWAL OF LICENCES WILL RANGE FROM \$4,065 TO \$24,740, DEPENDING ON THE NUMBER OF ROOMS.

AS TO THE ISSUE OR RENEWAL OF CERTIFICATES OF EXEMPTION, THE FEES WILL BE INCREASED TO \$720.

PUBLIC ENQUIRIES ON THE FEES INCREASE CAN BE MADE OF CNTA'S OFFICE OF THE LICENSING AUTHORITY ON TEL 881 7034.

- - - - 0 - - - -

#### ROCK HILL STREET TO BE EXTENDED

\* \* \* \* \*

THE HIGHWAYS DEPARTMENT IS INVITING TENDERS FOR THE EXTENSION OF ROCK HILL STREET AND ASSOCIATED ROAD WORKS.

THE WORKS COMPRISE THE CONSTRUCTION OF A NEW ROAD LINKING SANDS STREET WITH SMITHFIELD, AND RECONSTRUCTION OF SECTIONS OF EXISTING ROADS TOGETHER WITH THE ASSOCIATED GEOTECHNICAL WORKS, TRAM TRACK REALIGNMENT, WATERMAIN LAYING AND DRAINAGE IMPROVEMENT WORKS AT KENNEDY TOWN.

WORKS ARE EXPECTED TO COMMENCE IN JULY THIS YEAR AND WILL TAKE ABOUT 24 MONTHS TO COMPLETE.

A NOTICE ON THE TENDER INVITATION WAS PUBLISHED IN THE GAZETTE TODAY (FRIDAY).

TENDER FORMS AND FURTHER PARTICULARS MAY BE OBTAINED FROM THE REGIONAL HIGHWAY ENGINEER/HONG KONG, HIGHWAYS DEPARTMENT, EIGHTH FLOOR, HENNESSY CENTRE, 500 HENNESSY ROAD, CAUSEWAY BAY, HONG KONG. ENQUIRIES CAN BE MADE ON TEL 895 8405.

TENDERS MUST BE CLEARLY MARKED AND ADDRESSED TO THE CHAIRMAN, CENTRAL TENDER BOARD, AND PLACED IN THE GOVERNMENT SECRETARIAT TENDER BOX AT THE LIFT LOBBY ON THE LOWER GROUND FLOOR OF THE CENTRAL GOVERNMENT OFFICES (EAST WING), LOWER ALBERT ROAD (AT ITS JUNCTION WITH GARDEN ROAD), HONG KONG, BEFORE NOON ON MAY 20.

LATE TENDERS WILL NOT BE ACCEPTED.

THE WORKS HAVE BEEN DESIGNED AND CONSTRUCTION WILL BE SUPERVISED BY THE HIGHWAYS/HONG KONG REGION OF HIGHWAYS DEPARTMENT.

- - - - 0 - - - -

PIER PLANNED FOR PAK WAN

\* \* \* \* \*

A PIER IS TO BE BUILT AT PAK WAN, MA WAN TO SERVE THE CONSTRUCTION NEEDS ASSOCIATED WITH THE COMPREHENSIVE DEVELOPMENT PLAN FOR MA WAN.

RECLAMATION AND RELATED WORKS WILL TAKE PLACE WITHIN AN AREA OF ABOUT 2.12 HECTARES OF FORESHORE AND SEABED FOR SITE FORMATION AND CONSTRUCTION OF THE PIER.

WORK IS EXPECTED TO START IN SEPTEMBER THIS YEAR AND WILL TAKE ABOUT ONE YEAR TO COMPLETE.

THE EXTENT OF THE AREA AFFECTED IS DESCRIBED IN A GAZETTE NOTICE PUBLISHED TODAY (FRIDAY).

THE NOTICE AND THE RELATED PLAN CAN BE SEEN AT THE LANDS DEPARTMENT'S SURVEY AND MAPPING OFFICE, 14TH FLOOR, MURRAY BUILDING, GARDEN ROAD, CENTRAL, HONG KONG AND AT THE TSUEN WAN DISTRICT OFFICE, FIRST FLOOR, TSUEN WAN STATION MULTI-STOREY CARPARK BUILDING, 174-208 CASTLE PEAK ROAD, TSUEN WAN, NEW TERRITORIES.

ANY PERSON WHO CONSIDERS THAT HIS INTEREST, RIGHT OR EASEMENT IN OR OVER THE FORESHORE AND SEABED INVOLVED WILL BE AFFECTED BY THE WORKS MAY SEND A WRITTEN CLAIM TO THE DIRECTOR OF LANDS ON OR BEFORE APRIL 22, 1995.

HE SHOULD STATE IN HIS SUBMISSION THE SUM OF MONEY HE IS WILLING TO ACCEPT IN FULL AND FINAL SETTLEMENT OF HIS CLAIM AND ANY PARTICULARS TO SUBSTANTIATE HIS CLAIM.

- - - - 0 - - - -

TENDERS INVITED FOR SEABED PREPARATION WORKS

\* \* \* \* \*

THE TERRITORY DEVELOPMENT DEPARTMENT'S NEW TERRITORIES EAST DEVELOPMENT OFFICE IS INVITING TENDERS FOR A WORKS CONTRACT FOR THE CONTINUING DEVELOPMENT PROGRAMME FOR THE TSEUNG KWAN O NEW TOWN.

THE CONTRACT COMPRISES SEABED PREPARATION AND CONSTRUCTION OF 800 METRES OF SEAWALLS ALONG THE WESTERN AND SOUTHERN BOUNDARIES OF TSEUNG KWAN O AREA 86 TO PROVIDE A STRATEGIC PUBLIC DUMPING AREA.

THE WORKS ARE SCHEDULED TO BEGIN IN JULY THIS YEAR FOR COMPLETION IN 26 MONTHS.

TENDER FORMS AND FURTHER PARTICULARS MAY BE OBTAINED FROM THE OFFICE OF MAUNSELL CONSULTANTS ASIA LIMITED AT 4 FUNG WO LANE, WO CHE, SHA TIN.

THE TENDER CLOSING DATE IS NOON ON MAY 20.

- - - - 0 - - - -

JETTY FOR NEW AIRPORT  
\* \* \* \* \*

THE GOVERNMENT WILL BUILD A JETTY TO PROVIDE ACCESS TO A NEW NAVIGATIONAL AID FACILITY AT LUNG KWU CHAU FOR THE CHEK LAP KOK AIRPORT.

THE JETTY WILL BE BUILT ON 2.65 HECTARES OF FORESHORE AND SEABED AT LUNG KWU CHAU. THE WORK WILL BEGIN IN NOVEMBER AND WILL TAKE ABOUT ONE YEAR TO COMPLETE.

THE EXTENT OF THE AREA AFFECTED IS DESCRIBED IN A GAZETTE NOTICE PUBLISHED TODAY (FRIDAY).

THE NOTICE, TOGETHER WITH ITS RELATED PLAN, CAN BE SEEN NEAR THE WORK SITE.

THE PLAN CAN ALSO BE SEEN AT THE LANDS DEPARTMENT'S SURVEY AND MAPPING OFFICE, 14TH FLOOR, MURRAY BUILDING, GARDEN ROAD, CENTRAL, HONG KONG AND AT THE TUEN MUN DISTRICT OFFICE, SECOND FLOOR, TUEN MUN GOVERNMENT OFFICES, 1 TUEN HI ROAD, TUEN MUN, NEW TERRITORIES.

ANY PERSON WHO CONSIDERS THAT HE HAS AN INTEREST, RIGHT OR EASEMENT IN OR OVER THE FORESHORE AND SEABED INVOLVED MAY SEND A WRITTEN OBJECTION TO THE DIRECTOR OF LANDS ON OR BEFORE JUNE 15.

- - - - 0 - - - -

MATRIMONIAL CAUSES AND MAGISTRATES FEES ON RISE  
\* \* \* \* \*

FEES COLLECTED BY THE JUDICIARY IN PROVIDING VARIOUS SERVICES UNDER THE MATRIMONIAL CAUSES ORDINANCE AND THE MAGISTRATES ORDINANCE WILL GO UP BY 10 PER CENT FROM TODAY (FRIDAY).

THE FEES WERE LAST REVIEWED IN 1992.

"THE FEE REVISION HAS TAKEN ACCOUNT OF THE INCREASE IN THE COSTS OF PROVIDING THE SERVICES SINCE THE LAST REVIEW," A GOVERNMENT SPOKESMAN SAID.

HE EXPLAINED THAT THE REVISION WAS A ROUTINE ADJUSTMENT AIMED AT RECOVERING THE INCREASED ADMINISTRATIVE COSTS.

THE MATRIMONIAL CAUSES (FEES) (AMENDMENT) RULES 1994 AND THE MAGISTRATES (FEES) (AMENDMENT) REGULATION 1994, WHICH PROVIDE FOR THE INCREASE, WERE GAZETTED TODAY (FRIDAY).

- - - - 0 - - - -

TOTAL BAN ON TIGER MEDICINES FROM NEXT THURSDAY

\* \* \* \* \*

EFFECTIVE NEXT THURSDAY (APRIL 28), THE POSSESSION OF ALL MEDICINES CONTAINING OR CLAIMING TO CONTAIN TIGER INGREDIENTS WILL BE STRICTLY CONTROLLED IN HONG KONG.

AN ASSISTANT DIRECTOR OF THE AGRICULTURE AND FISHERIES DEPARTMENT (AFD), MR FRANK LAU SIN-PANG, ISSUED THE REMINDER A WEEK BEFORE THE EXPIRY OF A THREE-MONTH GRACE PERIOD FOR DISPOSING TIGER MEDICINES IN POSSESSION.

TO TIE IN WITH THE CONTROL, THE DEPARTMENT WILL STEP UP ENFORCEMENT WORK IN ITS INSPECTION OF CHINESE MEDICINE SHOPS IN THE COMING MONTHS.

MR LAU SAID FROM APRIL 28, POSSESSION OF MEDICINES CONTAINING OR CLAIMING TO CONTAIN TIGER INGREDIENTS WOULD ONLY BE PERMITTED, IN THE FORM OF A POSSESSION LICENCE ISSUED BY AFD, UNDER VERY EXCEPTIONAL CIRCUMSTANCES.

HE POINTED OUT THAT CONTROLS OVER THE IMPORT AND EXPORT OF SUCH ITEMS HAD BECOME EFFECTIVE FOLLOWING AMENDMENTS TO THE ANIMALS AND PLANTS (PROTECTION OF ENDANGERED SPECIES) ORDINANCE IN LATE JANUARY THIS YEAR. NO IMPORT OR EXPORT LICENCE HAS SINCE BEEN ISSUED.

"THIS IS TO COMPLY WITH THE REQUEST OF THE SECRETARIAT OF THE CONVENTION ON INTERNATIONAL TRADE IN ENDANGERED SPECIES OF WILD FAUNA AND FLORA (CITES) THAT MEASURES BE TAKEN TO HALT THE TRADE IN MEDICINES CONTAINING OR CLAIMING TO CONTAIN TIGER INGREDIENTS SINCE THE ANIMAL'S POPULATION IS AT A CRITICAL LEVEL."

IN ADDITION, MR LAU POINTED OUT THAT MEDICINES CONTAINING OR CLAIMING TO CONTAIN RHINO INGREDIENTS HAD BEEN BANNED IN HONG KONG SINCE DECEMBER 1989.

HE CALLED ON MEMBERS OF THE COMMUNITY, PARTICULARLY TRADITIONAL CHINESE MEDICINE TRADERS OR SHOPOWNERS, NOT TO BREACH THE ORDINANCE BY POSSESSING, IMPORTING OR EXPORTING THESE MEDICINES.

UNDER THE ORDINANCE, ANY PERSON FOUND GUILTY OF POSSESSING, IMPORTING OR EXPORTING THESE BANNED MEDICINES OR OTHER PROHIBITED ITEMS OF ENDANGERED SPECIES WITHOUT A LICENCE ISSUED BY AFD WOULD BE LIABLE TO A MAXIMUM FINE OF \$25,000 ON FIRST CONVICTION, AND \$50,000 PLUS SIX MONTHS' IMPRISONMENT ON SUBSEQUENT CONVICTIONS.

TO UPHOLD HONG KONG'S GOOD IMAGE IN ENDANGERED SPECIES CONSERVATION, MR LAU STRESSED THAT THE GOVERNMENT IS DETERMINED TO CRACK DOWN ANY ILLEGAL ACTIVITIES IN ENDANGERED SPECIES TRADE.

HE SAID: "DURING THE PAST SIX MONTHS, THE AFD HAS INSPECTED MORE THAN 2,000 CHINESE MEDICINE SHOPS FOR SUSPECTED RHINO AND TIGER PRODUCTS. THIS COVERS MORE THAN 90 PER CENT OF SUCH SHOPS IN THE TERRITORY.

/"DURING THE .....

"DURING THE OPERATIONS, A TOTAL OF 2,234 PACKETS OF MEDICINES CONTAINING OR CLAIMING TO CONTAIN RHINO INGREDIENTS, TWO RHINO HORNS AND TWO PIECES OF HORN SCRAP, AS WELL AS SOME 6.31 KG OF CLAIMED HIDE, VALUED AT ABOUT \$350,000, WERE SEIZED FROM 145 SHOPS.

"PROSECUTION OF 68 OF THESE CASES HAD BEEN CONCLUDED, RESULTING IN A TOTAL FINE OF \$250,300."

ALSO, IN 46 OF THESE SHOPS INSPECTED, CLAIMED TIGER PARTS (INCLUDING 7.14 KG OF BONE, 175 PIECES OF PENIS AND SIX PAWS) WORTH ABOUT \$270,000 WERE SEIZED. SO FAR, 26 CASES OF PROSECUTION WERE COMPLETED, WITH FINES TALLING \$146,500.

MR LAU BELIEVED THAT THE INCREASED ENFORCEMENT WORK HAD BROUGHT ILLICIT RHINO PRODUCT TRADE UNDER GOOD CONTROL.

"IN THE COMING MONTHS, THE GOVERNMENT'S ENFORCEMENT WORK WILL BE FOCUSING ON TIGER PARTS AND MEDICINES CONTAINING OR CLAIMING TO CONTAIN TIGER INGREDIENTS.

"CHINESE MEDICINE SHOPS HAD BEEN INFORMED BY LETTERS OF THE NEW CONTROLS WHICH WILL TAKE EFFECT FROM APRIL 28. ANOTHER ROUND OF INSPECTIONS OF CHINESE MEDICINE SHOPS HAS BEEN PLANNED IN THE COMING MONTHS AND SHOPS THAT HAD BEEN CHECKED BEFORE WOULD BE VISITED AGAIN."

HE URGED MEMBERS OF THE PUBLIC TO HELP MAKE THE CAMPAIGN A SUCCESS BY REFRAINING TO PURCHASE ANY SUCH ILLEGAL PRODUCTS AND INFORMING THE AFD, POLICE OR CUSTOMS OF ANY SUCH ILLICIT TRADE.

MR LAU REITERATED THAT THE GOVERNMENT WOULD ALSO CONTINUE ITS PUBLIC EDUCATION EFFORTS AND MAKE THE PUBLIC MORE AWARE OF THE NEED TO PROTECT ENDANGERED SPECIES.

- - - - 0 - - - -

TRADE DEPARTMENT CUSTOMER LIAISON GROUP  
HOLDS ITS FIRST MEETING

\* \* \* \* \*

THE TRADE DEPARTMENT'S CUSTOMER LIAISON GROUP (CLG) MET FOR THE FIRST TIME TODAY (FRIDAY).

THE SETTING UP OF THE 30-MEMBER CLG IS AIMED TO PROVIDE FOR A DIRECT AND ON-GOING DIALOGUE BETWEEN THE DEPARTMENT AND ITS CUSTOMERS.

"OUR CUSTOMERS' CONCERNS ARE OUR CONCERNS," THE DIRECTOR-GENERAL OF TRADE, MR TONY MILLER, SAID AT THE INAUGURATION CEREMONY OF THE CLG.

"THE DEPARTMENT WILL TAKE THE GROUP'S SUGGESTIONS AND FEEDBACK SERIOUSLY AND MAKE GOOD USE OF THE FORUM TO BETTER UNDERSTAND THE NEEDS OF OUR CUSTOMERS," HE SAID.

MEMBERS OF THE CLG, WHO COME FROM IMPORT AND EXPORT, MANUFACTURING, SHIPPING, FORWARDING AND TRANSPORTATION COMPANIES, HAVE BEEN CHOSEN FROM APPLICATIONS FROM COMPANIES REGISTERED WITH THE DEPARTMENT AND REPRESENT THE MAJOR SECTORS OF ITS CLIENTELE.

MEETINGS OF THE CLG WILL BE HELD AT A QUARTERLY INTERVAL AND CHAIRED BY DR VICTOR CHA MOU-ZING, WHO IS ALSO A NON-OFFICIAL MEMBER OF THE TEXTILES ADVISORY BOARD. TRADE DEPARTMENT'S CLG IS THE FIRST OF ITS KIND THAT HAS A NON-OFFICIAL CHAIRMAN.

SPEAKING AT THE SAME OCCASION, DR CHA SAID AS A MANUFACTURER HIMSELF, HE KNEW THAT UNDERSTANDING THE NEED OF CUSTOMERS WAS A DETERMINING FACTOR OF SUCCESS.

HE BELIEVED THAT THE NEWLY FORMED CLG COULD REFLECT THE VIEW OF USERS OF TRADE DEPARTMENT'S MAJOR SERVICES AND THEREFORE HELPED IMPROVE THE DEPARTMENT'S EFFICIENCY THROUGH REINFORCING THE COMMUNICATION BETWEEN THE DEPARTMENT AND ITS CLIENTS.

MR MILLER ALSO ANNOUNCED THE LAUNCHING OF THE SECOND PHASE OF THE DEPARTMENT'S PERFORMANCE PLEDGE WHICH INCLUDE REDUCED WAITING TIME FOR A NUMBER OF SERVICES AND DECLARED A MULTI-MEDIA ENQUIRY SYSTEM OPERATIONAL.

THE \$0.29 MILLION-WORTH SYSTEM EMPLOYS COMPUTERISED TOUCH-SCREEN TECHNOLOGY WHICH HELPS TRADERS OBTAIN INFORMATION OF THE DEPARTMENT'S SERVICES WITHIN SECONDS.

A NEWLY RENOVATED INFORMATION COUNTER WAS ALSO OFFICIALLY OPENED TODAY AS ONE OF THE MEASURES TO IMPROVE CUSTOMER-ORIENTED FACILITIES.

- - - - 0 - - - -

#### WIDER WORK SAFETY PROTECTION FOR YOUNG PEOPLE

\* \* \* \* \*

THE PASSAGE OF THE CONSTRUCTION SITES (SAFETY) (AMENDMENT) (NO. 2) REGULATION 1994 IN THE LEGISLATIVE COUNCIL WILL BRING WIDER WORK SAFETY PROTECTION FOR YOUNG PEOPLE.

THE REGULATION, WHICH WAS GAZETTED TODAY (FRIDAY), SEEKS TO PROHIBIT UNTRAINED YOUNG PERSONS UNDER 18 FROM WORKING ON CONSTRUCTION SITES.

SPEAKING AT A MEDIA SESSION THIS MORNING, AN ASSISTANT COMMISSIONER FOR LABOUR, MR MAK SAI-YIU, SAID THERE WERE ALREADY SAFETY AND HEALTH LAWS PROVIDING FOR SOME FORM OF RESTRICTION ON UNDERAGE YOUNG PEOPLE DOING HAZARDOUS WORK.

"THE NEWLY PASSED AMENDMENT REGULATION WILL GIVE WIDER AND ADDITIONAL PROTECTION TO YOUNG WORKERS AS THEY ARE NOT ALLOWED TO WORK ON CONSTRUCTION SITES STARTING FROM JUNE 22.

"HOWEVER, YOUNG PERSONS UNDER 18 WHO ARE RECEIVING OR HAVE RECEIVED APPROPRIATE TRAINING WOULD STILL BE ALLOWED TO WORK ON CONSTRUCTION SITES," HE SAID.

MR MAK SAID THE LABOUR DEPARTMENT WOULD INFORM THE PUBLIC OF THE AMENDMENT REGULATION THROUGH RADIO BROADCASTS, PRESS RELEASES AND BRIEFINGS FOR SCHOOL LEAVERS AND SUMMER JOB-SEEKERS.

/"WE SHALL .....

"WE SHALL ALSO SEEK HELP FROM THE SOCIAL WELFARE DEPARTMENT, VOLUNTARY YOUTH AGENCIES AND THE CAREERS SECTION OF THE EDUCATION DEPARTMENT TO PUBLICISE THE MESSAGE IN SCHOOLS AND YOUTH CENTRES."

MR MAK NOTED THAT THE HONG KONG CONSTRUCTION ASSOCIATION HAD AGREED TO PUBLICISE THE AMENDMENT REGULATION AMONG ITS MEMBERS.

HE URGED BUILDING AND CIVIL ENGINEERING CONTRACTORS NOT TO HIRE UNTRAINED PEOPLE AGED UNDER 18 WHO ARE MORE PRONE TO ACCIDENTS.

"OUR FACTORY INSPECTORS WILL ENFORCE THE AMENDMENT REGULATION DURING A SPECIAL SITE INSPECTION CAMPAIGN PLANNED FOR THIS SUMMER.

"CONTRACTORS SHOULD NOT TAKE THE RISK OF EMPLOYING UNTRAINED YOUNG PEOPLE AS THE MAXIMUM PENALTY STIPULATED IN THE AMENDMENT REGULATION IS A FINE OF \$50,000," HE SAID.

HE SAID A HOTLINE SERVICE OFFERED BY THE FACTORY INSPECTORATE DIVISION WOULD BE STEPPED UP WHEN THE AMENDMENT REGULATION CAME INTO FORCE.

"IT WILL ALSO BE USED TO RECEIVE INFORMATION ABOUT THE VIOLATION OF THE SITE SAFETY REGULATION."

MR MAK ADVISED SITE WORKERS AND STAFF TO CALL THE 24-HOUR HOTLINE 815 0678 IF THEY DISCOVERED OR SUSPECTED ANY CONTRACTOR OR SUB-CONTRACTOR HIRING UNTRAINED YOUNG PEOPLE UNDER 18 ON CONSTRUCTION SITES.

"ALL INFORMATION AND PARTICULARS OF INFORMANTS WILL BE TREATED AS CONFIDENTIAL," HE SAID.

ALSO SPEAKING AT THE MEDIA SESSION, THE EXECUTIVE DIRECTOR OF THE CONSTRUCTION INDUSTRY TRAINING AUTHORITY (CITA), MR TONG YAT-CHU, INTRODUCED VARIOUS BASIC CRAFT TRAINING COURSES SPECIALLY DESIGNED FOR YOUNGSTERS.

MR TONG ADVISED YOUNG PEOPLE WISHING TO ENTER THE CONSTRUCTION INDUSTRY AS CRAFTSMEN TO ENROL, FIRST OF ALL, ONTO APPROPRIATE BASIC CRAFT TRAINING COURSES AND THEN JOIN AN APPRENTICESHIP SCHEME FOR ON-THE-JOB TRAINING.

SUCH APPRENTICESHIP SCHEMES ARE MONITORED BY THE VOCATIONAL TRAINING COUNCIL.

"APART FROM OBTAINING PROPER TRAINING, TRAINEES RECEIVE SUBSIDIARY ALLOWANCES FROM CITA DURING THE INITIAL PHASE OF TRAINING AND PROPER WAGES DURING THE SUBSEQUENT ON-THE-JOB TRAINING.

"THOSE WISHING TO WORK IN THE CONSTRUCTION INDUSTRY SHOULD ACT NOW WHILE THERE ARE STILL PLENTY OF AVAILABLE CITA TRAINING PLACES," HE ADDED.

MR TONG ALSO EMPHASISED THE SAFETY ASPECT OF TRAINING EMBEDDED IN CITA'S COURSES.

HIGHWAYS DEPARTMENT ASSURES PUBLIC OF SERVICE STANDARD

\* \* \* \* \*

MEMBERS OF THE PUBLIC ARE ASSURED OF THE STANDARD OF SERVICES PROVIDED BY THE HIGHWAYS DEPARTMENT WITH THE LAUNCHING OF ITS PERFORMANCE PLEDGE SCHEME TODAY (FRIDAY).

ANNOUNCING DETAILS OF THE PLEDGE, A SPOKESMAN FOR THE DEPARTMENT SAID THE PERFORMANCE STANDARDS COVERED SIX DIFFERENT TYPES OF SERVICES.

THESE INCLUDE RESPONSE TO PUBLIC ENQUIRIES AND COMPLAINTS, ON-SITE DISPLAY OF THE PURPOSE AND ANTICIPATED COMPLETION DATE OF ROAD WORKS, REPAIR OF ROAD SURFACES AND TRAFFIC SIGNS, ISSUE OF ROAD EXCAVATION PERMITS AND CONSTRUCTION OF RUN-IN AND REPAIR OF DAMAGED ROAD SURFACE FOLLOWING BUILDING DEVELOPMENT.

ON COMPLAINTS OR ENQUIRIES, THE SPOKESMAN SAID STAFF OF THE DEPARTMENT WOULD REPLY WITHIN 10 WORKING DAYS UPON RECEIPT OF COMPLAINTS OR ENQUIRIES.

FOR MORE COMPLICATED CASES WHICH MIGHT INVOLVE OTHER PARTIES, AN INTERIM REPLY WOULD BE GIVEN WITHIN 10 WORKING DAYS TO BE FOLLOWED BY A DETAILED REPLY AS SOON AS INFORMATION IS AVAILABLE.

A SIMPLE DESCRIPTION OF ROAD WORKS WITH ANTICIPATED COMPLETION DATE WILL BE DISPLAYED ON SITE TO ENABLE THE PUBLIC TO UNDERSTAND WHY THE WORKS ARE NECESSARY AND WHEN THEY WILL BE COMPLETED.

REPAIR OF HOLES ON ROADS WILL BE COMPLETED AND DAMAGED TRAFFIC SIGNS WILL BE REPAIRED WITHIN 48 HOURS AFTER RECEIVING A COMPLAINT.

ROAD EXCAVATION PERMITS WILL BE ISSUED TO PUBLIC UTILITIES COMPANIES WITHIN 14 WORKING DAYS OF THE RECEIPT OF THE APPLICATIONS.

ON THE CONSTRUCTION OF RUN-IN AND REPAIR OF DAMAGED ROAD SURFACE FOLLOWING BUILDING DEVELOPMENT, WORK WILL START WITHIN 14 WORKING DAYS OF THE AVAILABILITY OF SITE.

"ALL THESE PLEDGED PERFORMANCE STANDARDS WILL BE MONITORED INTERNALLY AND THE RESULT WILL BE PUBLISHED EVERY YEAR," THE SPOKESMAN SAID.

A LEAFLET SETTING OUT DETAILS OF THE PERFORMANCE PLEDGE IS NOW AVAILABLE AT ALL DISTRICT OFFICES. REQUEST FOR COPIES CAN ALSO BE MADE TO THE HIGHWAYS DEPARTMENT BY TELEPHONING 762 3333.

THE SPOKESMAN SAID THE DEPARTMENT WELCOMED COMMENTS AND SUGGESTIONS ON THE WAY THE SERVICES WERE DELIVERED.

"MEMBERS OF THE PUBLIC WHO HAVE ANY VIEWS OR WHO ARE NOT SATISFIED WITH THE QUALITY OF THE SERVICES SHOULD WRITE TO THE SENIOR ENGINEER (HIGHWAY COMPLAINT) AT THE HIGHWAYS DEPARTMENT HEADQUARTERS, FIFTH FLOOR, HO MAN TIN GOVERNMENT OFFICES, 88 CHUNG HAU STREET, HO MAN TIN, KOWLOON," HE SAID.

ED RECRUITS ASSISTANT DIRECTOR

\* \* \* \* \*

THE EDUCATION DEPARTMENT IS INVITING APPLICATIONS TO FILL AN ASSISTANT DIRECTOR POST IN THE CURRICULUM DEVELOPMENT INSTITUTE (CDI) ON AGREEMENT TERMS FOR TWO AND A HALF YEARS.

APPLICANTS SHOULD HAVE A HONG KONG OR BRITISH FIRST DEGREE PLUS A HONG KONG OR BRITISH HIGHER DEGREE, BOTH RELEVANT TO THE SCHOOL CURRICULUM, OR EQUIVALENT QUALIFICATIONS; A POSTGRADUATE CERTIFICATE IN EDUCATION, OR AN EQUIVALENT QUALIFICATION.

AN EDUCATION DEPARTMENT SPOKESMAN SAID APPLICATIONS SHOULD ALSO HAVE AT LEAST 12 YEARS' POST-FIRST-DEGREE EXPERIENCE IN TEACHING AND ONE OR MORE OF THE FOLLOWING FULL-TIME BASIS INSPECTIONS OF SCHOOLS; CURRICULUM DEVELOPMENT WORK; TEACHER EDUCATION; AND RESEARCH IN EDUCATION.

IN ADDITION, APPLICANTS SHOULD HAVE AWARENESS OF RECENT DEVELOPMENTS IN THE SCHOOL SYSTEM WITH PARTICULAR REFERENCE TO CURRENT TRENDS IN CURRICULUM DEVELOPMENT, THE SPOKESMAN SAID.

THE APPLICANTS SHOULD HAVE AT LEAST FIVE OF THE 12 YEARS' EXPERIENCE IN A KEY ADMINISTRATIVE POST IN THE FIELD OF EDUCATION.

THE SPOKESMAN SAID THE SUCCESSFUL CANDIDATE'S DUTIES WOULD INCLUDE DIRECTING AND OVERSEEING THE CURRICULUM DEVELOPMENT INSTITUTE AND THE DEVELOPMENT AND PREPARATION OF CURRICULA, THE PROVISION OF CURRICULUM SUPPORTING MATERIALS AND THE IMPLEMENTATION OF CURRICULUM INNOVATIONS AND PROJECTS.

THE SALARY SCALE FOR THE POST IS FROM \$79,400 TO \$84,250 PER MONTH PLUS A GRATUITY AT 25 PER CENT OF GROSS BASIS SALARY, THE SPOKESMAN SAID.

HE SAID THE USUAL FRINGE BENEFITS INCLUDING PAID LEAVE, MEDICAL AND DENTAL BENEFITS, EDUCATION ALLOWANCE AND ASSISTANCE IN HOUSING WOULD BE GIVEN TO THE SUCCESSFUL CANDIDATE.

APPLICATIONS WITH DETAILED RESUME SHOULD BE SENT TO THE APPOINTMENTS REGISTRY OF THE EDUCATION DEPARTMENT, ROOM 1631, 16TH FLOOR, WU CHUNG HOUSE, 213 QUEEN'S ROAD EAST, WAN CHAI, HONG KONG.

THE CLOSING DATE FOR APPLICATION IS MAY 7, 1994. ENQUIRIES MAY BE DIRECTED TO THE APPOINTMENT REGISTRY ON TEL 892 6170.

## RESULTS OF CONDUCT COUNCIL ELECTION ANNOUNCED

\* \* \* \* \*

THE EDUCATION DEPARTMENT TODAY (FRIDAY) ANNOUNCED RESULTS OF THE ELECTION TO THE COUNCIL ON PROFESSIONAL CONDUCT IN EDUCATION, WHICH WAS HELD ON WEDNESDAY (APRIL 20).

THE ELECTION WAS HELD IN 1,775 SCHOOLS. A TOTAL OF 43,001 TEACHERS CAST VOTES IN THE ELECTION, REPRESENTING 89 PER CENT OF ALL ELIGIBLE VOTERS.

A TOTAL OF 45 ORGANISATIONS PARTICIPATED IN THE VOTING, REPRESENTING 61 PER CENT OF ALL ELIGIBLE ORGANISATIONS.

THE DIRECTOR OF EDUCATION, MR DOMINIC S W WONG, EXPRESSED GREAT SATISFACTION WITH THE HIGH TURNOUT FOR THE ELECTIONS, PARTICULARLY AMONG TEACHERS.

THE ELECTIONS RETURNED 23 CANDIDATES TO THE COUNCIL THEY ARE :

CATEGORY	NAME OF CANDIDATE	NUMBER OF VOTES
<u>I. TEACHERS</u>		
SECONDARY (GOVERNMENT)	MR LEUNG YAN-WING	7,697
SECONDARY (AIDED)	MR HA MAN-HO	7,871
	MR CHEONG CHEE-LUP	3,956
	MR LEE WAI-KAI	3,773
SECONDARY (PRIVATE)	MS CHAN CHUK-YUE	4,467
PRIMARY (AIDED)	MR PUN TIN-CHI	11,735
	MR CHAN HUNG	7,613
	MR CHOW KA-KONG	6,103
PRIMARY (PRIVATE)	MR CHING PING-YAN	5,609
KINDERGARTEN	MS YAU SIU-HA	2,135
	MS WAN KAM-FONG	1,955
SPECIAL SCHOOLS	MR CHAN KWOK-KUEN	678
	MS POON KOON-FONG	448

II. ORGANISATIONS

TEACHER EDUCATION INSTITUTIONS:	DR CHENG KAI-MING
ORGANISATIONS OF EDUCATIONAL PERSONNEL:	MR CHIU CHI-SHING MR LEUNG SIU-TONG
SCHOOLS COUNCILS AND ORGANISATIONS OF SPONSORING BODIES:	MR CHEUNG MAN-SUN MS CHEUNG YEE-HING

/ORGANISATIONS OF .....

ORGANISATIONS OF SCHOOL HEADS:	MR LEUNG SHIU-CHUN
SUBJECT-RELATED ORGANISATIONS:	MRS PANG CHU WAI-SEE MR HO WING-KAN
TEACHERS' UNIONS:	MS YU WAI-PING
OTHER EDUCATIONAL ORGANISATIONS:	MR TSE KAR-CHEUNG

TWO CANDIDATES FOR ONE OF THE TEACHERS' UNIONS SEATS IN THE ORGANISATION-NOMINATED CATEGORIES, MR LEE SEE-YUEN OF THE HONG KONG TEACHERS' ASSOCIATION AND MR WOU TCHONG-HONG OF THE HONG KONG AIDED SCHOOL TEACHERS' ASSOCIATION, RECEIVED THE SAME NUMBER OF VOTES IN THE ELECTION.

THE RELEVANT ORGANISATIONS HAVE BEEN ASKED TO VOTE AGAIN AS SOON AS POSSIBLE BETWEEN THE TWO CANDIDATES SO AS TO ELECT ONE OF THEM TO THE COUNCIL. AN EDUCATION DEPARTMENT SPOKESMAN SAID THAT THIS WOULD NOT AFFECT THE FIRST MEETING OF THE NEW COUNCIL.

THE DIRECTOR OF EDUCATION IS EXPECTED TO NOMINATE THREE MEMBERS, INCLUDING THE ASSISTANT DIRECTOR OF EDUCATION (SCHOOLS) AND TWO LAY MEMBERS, TO THE COUNCIL IN THE NEXT FEW DAYS.

THE FIRST MEETING OF THE NEW COUNCIL WILL BE HELD ON APRIL 27.

----- 0 -----

#### DISTRICT BOARD MEMBERS VISIT PREVOCATIONAL SCHOOL

\* \* \* \* \*

DISTRICT BOARD MEMBERS TODAY (FRIDAY) HAD AN INSIGHT INTO THE ACTIVITIES OF A PREVOCATIONAL SCHOOL DURING THE THIRD IN A SERIES OF FAMILIARISATION VISITS TO EDUCATIONAL FACILITIES.

A TOTAL OF NINE MEMBERS FROM YAU TSIM, KWUN TONG, MONG KOK AND WONG TAI SIN DISTRICT BOARDS PARTICIPATED IN THE VISIT. HEADING THE DELEGATION WAS THE CHAIRMAN OF KWUN TONG DISTRICT BOARD, MR LAM HANG-FAI.

OTHER MEMBERS WERE MR JOHN WU (YAU TSIM); MR FAN WAI-KONG (KWUN TONG); MR HENRY CHAN AND MRS TAM CHEUNG KIT-YING (MONG KOK); MR CHAN CHOW-FAN, MR CHAN CHUN-FAT, MR CHEUNG CHI-WAH AND DR ALBERT LI (WONG TAI SIN).

DURING THEIR VISIT TO THE CCC ROTARY PREVOCATIONAL SCHOOL IN LOK FU, THEY WERE BRIEFED BY THE ASSISTANT DIRECTOR OF EDUCATION (SCHOOLS), MR TSUI SEE-MING, AND THE PRINCIPAL, MR KWOK HIN-WAH.

THE SCHOOL WAS SET UP IN 1972. ITS SPECIALITY SUBJECTS ARE ACCOMMODATION AND CATERING SERVICES, PRINTING AND FASHION AND CLOTHING.

/THE VISITORS .....

THE VISITORS WERE TOLD THAT PREVOCATIONAL SCHOOLS WERE AN INTEGRAL PART OF THE EDUCATION SYSTEM IN HONG KONG, OFFERING AN ALTERNATIVE FORM OF SECONDARY EDUCATION TO THAT PROVIDED IN GRAMMER AND SECONDARY-TECHNICAL SCHOOLS.

PREVOCATIONAL SCHOOLS PROVIDE THE LINK BETWEEN GENERAL EDUCATION AND EDUCATION FOR EMPLOYMENT THROUGH A KNOWLEDGE OF BROAD-BASED BASIC SKILLS AND A WIDE RANGE OF APPLICATIONS OF MODERN TECHNIQUES IN AT LEAST TWO MAJOR FIELDS OF LOCAL EMPLOYMENT.

WITH THE INTRODUCTION OF SIXTH FORM CLASSES IN THESE SCHOOLS IN 1992, STUDENTS CAN PURSUE TECHNOLOGICAL OR OTHER STUDIES IN THE POLYTECHNICS, UNIVERSITIES OR OTHER TERTIARY INSTITUTIONS.

- - - - 0 - - - -

REHABILITATION SERVICES HELP DISABLED INTEGRATE INTO COMMUNITY

\* \* \* \* \*

THE BASIC OBJECTIVE OF HONG KONG'S REHABILITATION SERVICES IS TO DEVELOP THE POTENTIAL OF DISABLED PERSONS AND TO ENABLE THEM TO WORK AND LIVE HAPPILY AND AS INDEPENDENTLY AS POSSIBLE IN THE COMMUNITY.

THIS WAS STATED BY THE DIRECTOR OF SOCIAL WELFARE, MR IAN STRACHAN, WHEN HE OFFICIATED AT THE OPENING CEREMONY OF THE SPASTICS ASSOCIATION OF HONG KONG - BRADBURY TAK TIN WORKSHOP AND BRADBURY WONG TAI SIN HOSTEL TODAY (FRIDAY).

"INTEGRATION OF THE DISABLED INTO THE COMMUNITY IS OUR ULTIMATE GOAL. SO IT IS IMPORTANT THAT WE ESTABLISH REHABILITATION FACILITIES WITHIN THE COMMUNITY.

"SO WHEN WE IDENTIFY OPPOSITION TO THE ESTABLISHMENT OF REHABILITATION FACILITIES WITHIN THE COMMUNITY, WE MUST ASCERTAIN THE REASONS," MR STRACHAN SAID.

NOTING THAT THE RESISTANCE MIGHT BE DUE TO RESIDENTS' UNCERTAINTY AND FEAR, HE STRESSED THAT ACTION HAD TO BE TAKEN TO ALLAY THESE CONCERNS.

"WE NEED TO COMMUNICATE AND EXPLAIN OUR POLICIES TO LOCAL RESIDENTS, AND TRUST THAT THE GOODWILL AND THE GOOD SENSE OF THE GOVERNMENT AND PARTIES CONCERNED WILL LEAD TO THE ACCEPTANCE OF THE DISABLED LIVING AND WORKING AMONG US."

POINTING OUT THAT SHELTERED WORKSHOPS HAD BEEN ONE OF THE EARLIEST REHABILITATION SERVICES DEVELOPED FOR DISABLED PERSONS, MR STRACHAN SAID SHELTERED EMPLOYMENT HELPED THOSE NOT YET READY TO COMPETE FOR A PLACE IN THE OPEN JOB MARKET.

"WITH THE AIM OF FOSTERING SELF-RESPECT AND INDEPENDENCE, SHELTERED WORKSHOPS PROVIDE OPPORTUNITIES FOR WORK ADJUSTMENT AND ADVANCEMENT.

"THE ULTIMATE GOAL IS THAT SHELTERED WORKERS WITH APPROPRIATE TRAINING, CAN PROGRESS TO SUPPORTED AND OPEN EMPLOYMENT," HE CONCLUDED.

THE SPASTICS ASSOCIATION OF HONG KONG, FOUNDED IN 1963, HAS BEEN ONE OF THE FIRST NON-GOVERNMENTAL ORGANISATIONS PROVIDING REHABILITATION SERVICES FOR DISABLED PERSONS. IT OPERATES FOUR SHELTERED WORKSHOPS AND FIVE HOSTELS, SERVING NEARLY 670 HANDICAPPED PERSONS.

THE NEW BRADBURY TAK TIN WORKSHOP AND BRADBURY WONG TAI SIN HOSTEL WILL PROVIDE AN ADDITIONAL 120 WORKSHOP PLACES AND 50 RESIDENTIAL PLACES.

- - - - 0 - - - -

#### SWIMMING SAFETY ADVICE

\* \* \* \* \*

WITH THE APPROACH OF THE SWIMMING SEASON, A GOVERNMENT SPOKESMAN TODAY (FRIDAY) REMINDED SWIMMERS THAT A FEW POINTERS OUGHT TO BE HEEDED IN ORDER TO ENSURE SAFETY WHEN SWIMMING OFF BEACHES.

"ALWAYS GO TO A GAZETTED BEACH WHERE LIFEGUARDS ARE ON DUTY," THE SPOKESMAN STRESSED.

SWIMMERS SHOULD NOT ENTER THE WATER ONCE THE SHARK WARNING FLAG IS HOISTED.

EVEN WHEN NO SHARK WARNING FLAG IS HOISTED, SWIMMERS SHOULD STILL OBSERVE THE FOLLOWING PRECAUTIONS:

- \* DO NOT SWIM ALONE;
- \* DO NOT SWIM IF YOU ARE BLEEDING OR HAVE ANY OPEN WOUNDS;
- \* IF SCHOOLS OF FISH START TO BEHAVE ERRATICALLY OR START TO CONGREGATE IN UNUSUALLY LARGE NUMBERS, LEAVE THE WATER AND MAKE A REPORT TO THE LIFEGUARDS ON DUTY OR TO THE POLICE;
- \* IF A LARGE FISH IS SEEN, LEAVE THE WATER AS QUICKLY AND CALMLY AS POSSIBLE AND MAKE A REPORT TO THE LIFEGUARDS ON DUTY OR TO THE POLICE; AND
- \* ALWAYS SWIM WITHIN THE BOUNDARIES DESIGNATED.

THE SPOKESMAN ADDED THAT PEOPLE SHOULD NOT SWIM AT DAWN, AT DUSK OR AT NIGHT.

HE SAID DESPITE PREVIOUS PUBLICITY, MANY SWIMMERS HAD IGNORED THIS ADVICE ON SAFETY PRECAUTIONS, PARTICULARLY THE POINT ABOUT NOT SWIMMING AT DAWN, DUSK OR NIGHT.

"THIS IS REALLY REGRETTABLE," THE SPOKESMAN SAID, "AS SWIMMERS THUS EXPOSE THEMSELVES TO DANGER UNNECESSARILY."

- - - - 0 - - - -

TAI PO RESIDENTS URGED TO REGISTER AS VOTERS

\* \* \* \* \*

THE TAI PO DISTRICT OFFICER, MR PO PUI-LEONG, TODAY (FRIDAY) URGED RESIDENTS IN TAI PO TO EXERCISE THEIR CIVIC RIGHT TO REGISTER AS VOTERS.

SPEAKING AT THE INAUGURATION CEREMONY OF THE TAI PO SOCIETY FRATERNAL ASSOCIATION, MR PO SAID A LARGE SCALE VOTER REGISTRATION CAMPAIGN WAS ALREADY UNDERWAY IN THE TERRITORY TO CALL ON THE TWO MILLION ELIGIBLE VOTERS TO REGISTER FOR THE 1994/95 DISTRICT BOARD, MUNICIPAL COUNCIL AND LEGISLATIVE COUNCIL ELECTIONS.

ECHOING THE CAMPAIGN SLOGAN "MAKE YOURSELF HEARD, REGISTER TO VOTE", HE SAID PEOPLE COULD EFFECTIVELY REFLECT THEIR VIEWS TO THE GOVERNMENT THROUGH THEIR DISTRICT BOARD MEMBERS OR COUNCILLORS.

MR PO ALSO REMINDED REGISTERED ELECTORS TO REPORT ANY CHANGE OF HOME ADDRESS TO THE REGISTRATION AND ELECTORAL OFFICE TO ENSURE THAT THEY VOTE IN THE RIGHT CONSTITUENCY.

- - - - 0 - - - -

GOVERNMENT STAFF INTER-DEPARTMENTAL RACE 1994

\* \* \* \* \*

THE GOVERNMENT STAFF INTER-DEPARTMENTAL RACE, WHICH IS ORGANISED BY THE CORRECTIONAL SERVICES DEPARTMENT (CSD) THIS YEAR, WILL BE HELD AT PAK TAM CHUNG IN THE SAI KUNG COUNTRY PARK TOMORROW (SATURDAY), STARTING AT 9.30 AM.

THE ROUTE WILL TAKE PARTICIPANTS THROUGH THE SCENIC LANDSCAPE OF PAK TAM CHUNG WITH THE PO LEUNG KUK HOLIDAY CAMP AS STARTING AND FINISHING POINTS. THE LENGTH OF THE COURSE FOR MEN IS ABOUT 10 KILOMETRES WHILE THAT FOR LADIES IS ABOUT 5.8 KILOMETRES.

PARTICIPANTS WILL COMPETE UNDER FOUR CATEGORIES - INDIVIDUAL SECTION FOR MEN, LADIES AND VETERANS AND TEAM SECTION FOR DEPARTMENTS. THERE WILL BE 50 GOVERNMENT DEPARTMENTS AND 1,077 CIVIL SERVANTS PARTICIPATING IN THE RACE THIS YEAR.

THE RACE IS AN ANNUAL EVENT TO PROMOTE LONG-DISTANCE RUNNING AND FRIENDSHIP AMONG CIVIL SERVANTS.

THERE WERE 993 PARTICIPANTS IN LAST YEAR'S RACE ORGANISED BY THE FIRE SERVICES DEPARTMENT.

- - - - 0 - - - -

FRIDAY, APRIL 22, 1994

- 34 -

HONG KONG MONETARY AUTHORITY  
MONEY MARKET OPERATIONS  
\* \* \* \* \*

	\$ MILLION	TIME (HOURS)	CUMULATIVE CHANGE (\$ MILLION)
OPENING BALANCE IN THE ACCOUNT	1,916	0930	+894
CLOSING BALANCE IN THE ACCOUNT	2,805	1000	+944
CHANGE ATTRIBUTABLE TO :		1100	+894
MONEY MARKET ACTIVITY	+919	1200	+919
LAF TODAY	-30	1500	+919
		1600	+919

LAF RATE 2.00 BID/4.00 OFFER TWI 125.2 \*+0.2\* 22.4.94

HONG KONG MONETARY AUTHORITY

EF BILLS		EF NOTES/HONG KONG GOVERNMENT BONDS				
TERMS	YIELD	TERM	ISSUE	COUPON	PRICE	YIELD
1 WEEK	2.85 PCT	16 MONTHS	2508	4.625	99.42	5.14
1 MONTH	3.28 PCT	19 MONTHS	2511	4.15	98.30	5.35
3 MONTHS	3.84 PCT	22 MONTHS	2602	4.40	98.04	5.62
6 MONTHS	4.25 PCT	30 MONTHS	3610	4.20	95.87	6.08
12 MONTHS	4.85 PCT	33 MONTHS	3701	4.60	96.08	6.26

TOTAL TURNOVER OF BILLS AND BONDS - 26,191 MN

CLOSED 22 APRIL 1994

----- 0 -----