



## DAILY INFORMATION BULLETIN

ISSUED BY GOVERNMENT INFORMATION SERVICES  
BEACONSFIELD HOUSE, HONG KONG. TEL: 5-233191

MONDAY, SEPTEMBER 23, 1985

<u>CONTENTS</u>	<u>PAGE NO.</u>
GOVERNOR TO VISIT ID CARD CENTRE .....	1
SIR JOHN SEES SOME RECOVERY IN DOMESTIC EXPORTS .....	1
PROPOSED REVISION OF TRADE BILL 'OBJECTIONABLE' .....	8
UK TRANSPORT CHIEF TOURS SHA TIN .....	10
PUBLIC HELP URGED FOR DISTRICT OFFICE WORK .....	10
SPECIAL MEETING TO DISCUSS HOUSING GREEN PAPER .....	11
PROVISIONAL COUNCIL ENDORSES BUDGET PROPOSAL .....	11
BOARD TO COMMENT ON ACTION AGAINST '+RIP-OFF+' BARS .....	12
'MEDICAL CARE WITHIN EASY REACH OF ALL' .....	13
NEED FOR MANAGEMENT TALENT STRESSED .....	14
THIRD MEETING .....	15
'EDUCATION FOR OFFENDERS' .....	15
QUARTERS TO BE BUILT AT POKFULAM FIRE STATION .....	15
CONTROL OF HOMES FOR ELDERLY UNDER STUDY .....	16
ONE MAIL DELIVERY NEXT MONDAY .....	16
ROAD SAFETY DRIVE STARTS WITH TV SHOW .....	17
MORE POSTAL COUNTERS TO COPE WITH 'FLOWER' RUSH .....	18
BOARD MEMBERS SEE KCRC CONTROL CENTRE .....	18
SAI YING PUN WATER CUT .....	19
WATER STORAGE FIGURE .....	19

MONDAY, SEPTEMBER 23, 1985

- 1 -

GOVERNOR TO VISIT ID CARD CENTRE

\* \* \*

THE GOVERNOR, SIR EDWARD YOUDE, WILL VISIT THE HONG KONG NEW IDENTITY CARD ISSUE OFFICE OF THE IMMIGRATION DEPARTMENT ON WEDNESDAY (SEPTEMBER 25) AFTERNOON.

HE WILL BE ACCOMPANIED BY THE DIRECTOR OF IMMIGRATION, MR ALAN CARTER.

- - - - -

NOTE TO EDITORS:

YOU ARE INVITED TO COVER THE VISIT BY THE GOVERNOR TO THE HONG KONG NEW IDENTITY CARD ISSUE OFFICE ON WEDNESDAY (SEPTEMBER 25) AFTERNOON AT THE BASEMENT OF 151 GLOUCESTER ROAD, WAN CHAI. ENTRANCE TO THE OFFICE FACES TONNOCHY ROAD.

PRESS MEMBERS COVERING THE EVENT SHOULD BE PRESENT BY 4 PM.

GIS AND IMMIGRATION DEPARTMENT OFFICERS WILL BE ON HAND TO ASSIST.

- - - - 0 - - - -

SIR JOHN SEES SOME RECOVERY IN DOMESTIC EXPORTS

\* \* \* \*

THE FINANCIAL SECRETARY, SIR JOHN BREMIDGE TONIGHT FORECAST +SOME RECOVERY+ IN DOMESTIC EXPORT PERFORMANCE IN THE SECOND HALF OF THE YEAR WHICH WOULD RESULT IN A GROWTH RATE OF ONE PER CENT IN REAL TERMS FOR THE YEAR AS A WHOLE.

THIS RECOVERY, HE SAID, WOULD DEPEND ON A REBOUNDED OF THE UNITED STATES ECONOMY, +AS IS GENERALLY EXPECTED+.

IT WAS ALSO +SUBSTANTIALLY BELOW+ HIS BUDGET FORECAST OF 11 PER CENT AND WOULD NOT EVEN BE SO EASY TO ACHIEVE, HE SAID.

REVIEWING THE ECONOMY IN A TALK TO THE HONG KONG MANAGEMENT ASSOCIATION, SIR JOHN ALSO:

\* REDUCED THE FORECAST GROWTH RATE IN REAL TERMS OF THE GROSS DOMESTIC PRODUCT IN 1985 TO BETWEEN 4.5 PER CENT AND FIVE PER CENT, FROM THE BUDGET FORECAST OF ABOUT SEVEN PER CENT, AND THE ACHIEVED GROWTH RATE OF NINE PER CENT IN 1984;

\* STRESSED AGAIN THAT THE LINKED RATE BETWEEN THE HONG KONG DOLLAR AND THE U.S. DOLLAR WOULD BE MAINTAINED;

/\* CAUTIONED THE .....

- \* CAUTIONED THE PUBLIC ABOUT THE +STRUCTURAL IMBALANCE THAT COULD RESULT+ IF THE LOW LOCAL INTEREST RATES +ENCOURAGED PROPERTY SPECULATION TO AN EXTENT UNJUSTIFIED BY THE BASIC ECONOMIC FUNDAMENTALS+;
- \* DISCLOSED THAT, AFTER LENGTHY AND CAREFUL CONSULTATION WITH THE FINANCIAL COMMUNITY, AND SUBJECT TO EXECUTIVE COUNCIL'S ADVICE, AMENDMENT BILLS WOULD BE INTRODUCED INTO THE LEGISLATIVE COUNCIL AT THE END OF THE YEAR FOR FURTHER IMPROVEMENTS IN THE SYSTEM OF PRUDENTIAL SUPERVISION OF BANKS AND DEPOSIT-TAKING COMPANIES;
- \* WARNED ABOUT THE THREAT OF CALLS FOR FURTHER PROTECTIONIST MEASURES, IN PARTICULAR THE CONTROVERSIAL JENKINS BILL WHICH, IF PASSED INTO LAW, WOULD UNDERMINE NOT ONLY WORLD TRADE IN THE TEXTILES SECTOR, BUT ALSO THE MULTI-FIBRE ARRANGEMENT AND THE GATT ITSELF BECAUSE IT CONTRAVENED SOME OF THE VITAL PRINCIPLES UNDERLYING THESE AGREEMENTS, AND
- \* SAID THAT THERE WERE INDICATIONS OF A PROBABLE IMPROVEMENT IN THE GOVERNMENT'S ACCOUNTS COMPARED WITH THE BUDGETED DEFICIT OF \$1 BILLION FOR 1985-86.

DISCUSSING HONG KONG'S ECONOMIC PERFORMANCE IN THE FIRST HALF OF THIS YEAR, SIR JOHN SAID IT HAD BEEN CHARACTERISED BY A FALL IN DOMESTIC EXPORTS -- BY SIX PER CENT; A LARGER INCREASE IN RE-EXPORTS -- BY 36 PER CENT; A LOW RATE OF INFLATION AND VIRTUALLY NO UNEMPLOYMENT, AT THREE PER CENT.

COMPARED WITH THE FIRST HALF OF LAST YEAR, IN REAL TERMS TOTAL EXPORTS, COMPRISING DOMESTIC EXPORTS AND RE-EXPORTS, GREW BY NINE PER CENT.

DOMESTIC EXPORTS TO CHINA, HE SAID GREW BY 70 PER CENT, REFLECTING THE ADOPTION BY CHINA OF MORE LIBERAL ECONOMIC POLICIES, AND IN PARTICULAR THE FOUR MODERNISATIONS PROGRAMME.

TOTAL IMPORTS GREW BY NINE PER CENT IN REAL TERMS. A VISIBLE TRADE SURPLUS OF \$278 MILLION OR 0.2 PER CENT OF THE VALUE OF IMPORTS WAS RECORDED IN THE FIRST HALF OF THIS YEAR, COMPARED WITH A VISIBLE TRADE GAP OF FIVE PER CENT IN THE FIRST HALF OF 1984.

+THE LAST TIME A HALF-YEARLY VISIBLE TRADE SURPLUS WAS RECORDED WAS IN 1951. IN THE 12 MONTHS TO JULY 1985, THERE WAS A FAVOURABLE TRADE BALANCE OF \$5.3 BILLION. IN THE PREVIOUS 12 MONTHS THE ADVERSE BALANCE WAS \$10.5 BILLION.

+THIS IS AN AMAZING SWING,+ SIR JOHN SAID.

DOMESTIC CONSUMER DEMAND WAS SLUGGISH, AS INDICATED BY THE RELATIVELY LOW GROWTH RATES OF RETAINED IMPORTS OF FOODSTUFFS AND OF CONSUMER GOODS. THE GROWTH RATE OF RETAINED IMPORTS OF CAPITAL GOODS ALSO SLOWED DOWN IN THE SECOND QUARTER, AS THE WEAK DOMESTIC EXPORT PERFORMANCE SO FAR THIS YEAR BEGAN TO HAVE AN EFFECT ON MANUFACTURERS' INVESTMENT INTENTIONS.

NEVERTHELESS, SIR JOHN SAID, THE PROPERTY MARKET HAD SHOWN +CLEAR SIGNS OF REVIVAL+.

THE RATE OF TAKE-UP FOR ALL MAJOR CATEGORIES HAD IMPROVED, WITH PRICES AND RENTALS RECORDING INCREASES.

A NUMBER OF FAVOURABLE FACTORS, SUCH AS THE RISE IN REAL INCOMES FOLLOWING THE BUOYANT ECONOMIC PERFORMANCE IN 1984, THE FALL IN PROPERTY PRICES AND RENTALS OVER THE PAST FEW YEARS TO MORE REALISTIC LEVELS AND SEVERAL REDUCTIONS IN MORTGAGE RATES HAD COMBINED TO BRING A RESURGENCE OF INTEREST IN PROPERTY PURCHASE.

THE UNEMPLOYMENT RATE AT 3.0 PER CENT, AND UNDEREMPLOYMENT RATE AT 1.0 PER CENT IN THE SECOND QUARTER OF THIS YEAR, REMAINED STABLE.

+WE STILL RECKON THAT AN UNEMPLOYMENT RATE OF ABOUT 3.5 PER CENT REPRESENTS EFFECTIVE FULL EMPLOYMENT IN HONG KONG,+ SIR JOHN SAID.

AS CHANGES IN UNEMPLOYMENT TENDED TO LAG BEHIND CHANGES IN OTHER ECONOMIC CONDITIONS AND AS EMPLOYERS TENDED TO HANG ON TO THEIR LABOUR, THE SLACKENING IN DOMESTIC EXPORT PERFORMANCE IN RECENT MONTHS HAD NOT RESULTED IN A MEASUREABLE RISE IN THE UNEMPLOYMENT RATE, SIR JOHN ADDED.

SPEAKING OF THE MARKED LOW RATE OF INFLATION, SIR JOHN SAID THAT WHILE THE RELATIVE STRENGTH OF THE HONG KONG DOLLAR EARLIER IN THE YEAR HAD HAD SOME FAVOURABLE EFFECTS ON IMPORT PRICES, THE MODERATE RATE OF INFLATION IN HONG KONG'S MAJOR TRADING PARTNERS AND THE CONTINUED EASING IN WORLD COMMODITY PRICES HAD ALSO HELPED.

HIS BUDGET FORECAST OF AN AVERAGE INCREASE OF 5.5 PER CENT IN THE CPI (A) FOR THE YEAR NOW APPEARED TO BE HIGH, AND HE THEREFORE REDUCED IT TO FOUR PER CENT.

+WE MAY DO BETTER. OF COURSE MUCH DEPENDS ON FUTURE MOVEMENTS OF THE U.S. DOLLAR, TO WHICH THE HONG KONG DOLLAR IS FIRMLY FIXED,+ SIR JOHN SAID.

SPEAKING OF THE HONG KONG DOLLAR, HE SAID THAT, +DESPITE GYRATIONS+ IN THE EXCHANGE RATE OF THE U.S. DOLLAR AGAINST OTHER MAJOR CURRENCIES, THE EXCHANGE RATE OF THE HONG KONG DOLLAR TO THE U.S. DOLLAR HAD REMAINED CLOSE TO THE LINKED RATE.

IN JULY THIS YEAR, HE SAID, +AN EUPHORIC FEELING ABOUT THE LOCAL STOCK AND PROPERTY MARKETS, PLUS A SHARP WEAKENING OF THE U.S. DOLLAR AND SOME UNDOUBTED SPECULATION+ HAD MOVED THE EXCHANGE RATE MOMENTARILY TO AROUND HK\$7.72 PER U.S. DOLLAR.

THIS REPRESENTED ONLY A ONE PER CENT VARIATION FROM THE LINKED RATE WHICH, WHEN COMPARED WITH THE FALL IN THE U.S. DOLLAR AGAINST, FOR EXAMPLE, THE DEUTSCHEMARK OF AROUND 17 PER CENT IN THE FIVE MONTHS FROM MARCH TO JULY THIS YEAR, WAS VERY SMALL.

+YET SOME TOOK THE OPPORTUNITY TO SPREAD UNFOUNDED RUMOURS ABOUT THE LINK. IN THE EVENT THE HONG KONG DOLLAR INTEREST RATES WERE LOWERED SUBSTANTIALLY BELOW THOSE FOR THE U.S. DOLLAR AND IN DUE COURSE THE EXCHANGE RATE OF THE HONG KONG DOLLAR AGAINST THE U.S. DOLLAR MOVED BACK CLOSE TO 7.80.

+I REPEAT YET AGAIN THAT THE LINK WILL BE MAINTAINED AT 7.80,+ SIR JOHN SAID.

REFERRING TO CONCERN EXPRESSED BY SOME ABOUT THE INFLATIONARY CONSEQUENCES FOR HONG KONG OF A POSSIBLE CONTINUED FALL IN THE U.S. DOLLAR, SIR JOHN SAID SUCH CONCERN HAD TO BE PUT IN CONTEXT.

THE FALL IN THE U.S. DOLLAR FROM ITS PEAK IN FEBRUARY TO ITS TROUGH IN AUGUST BY 21 PER CENT AGAINST THE DEUTSCHEMARK AND 33 PER CENT AGAINST STERLING, MEANT A DEPRECIATION OF THE HONG KONG DOLLAR ON A TRADE-WEIGHTED BASIS FROM A HIGH OF 79.1 ON MARCH 6, TO A LOW OF 74 ON AUGUST 22. THIS REFLECTED A FALL OF ABOUT SIX PER CENT IN FIVE AND A HALF MONTHS WHICH NOT ONLY SHOULD NOT CAUSE CONCERN BUT WAS CLEARLY BENEFICIAL TO EXPORTERS, SIR JOHN SAID.

+WE SHOULD ALSO BEAR IN MIND THAT THIS WAS PRECEDED BY A PERIOD DURING WHICH THE U.S. DOLLAR HAD STRENGTHENED SHARPLY. IT HAS DONE SO AGAIN RECENTLY. DOGMATISM IN THIS AREA IS VERY DANGEROUS,+ SIR JOHN SAID.

TO RESTRAIN THE -INFLOW OF FUNDS INTO THE HONG KONG DOLLAR AND TO VALIDATE THE LINK TO THE U.S. DOLLAR, THE LOCAL INTEREST RATES HAD BEEN RELATIVELY LOW THIS YEAR.

THIS WAS HELPFUL TO HOME BUYERS AND TO THE ECONOMY GENERALLY. +BUT WE SHOULD BE AWARE OF THE STRUCTURAL IMBALANCE THAT COULD RESULT IF SUCH LOW RATE ENCOURAGED PROPERTY SPECULATION TO AN EXTENT UNJUSTIFIED BY THE BASIC ECONOMIC FUNDAMENTALS.

+I HOPE THE PAINFUL LESSONS OF THE RECENT PAST ARE STILL FRESH IN INVESTORS' MINDS.

+WE SHOULD NOTE THAT WITH THE LINK, HONG KONG DOLLAR INTEREST RATES SHOULD NOT IN THE LONG TERM DEVIATE SUBSTANTIALLY FROM U.S. DOLLAR INTEREST RATES,+ HE SAID.

MONDAY, SEPTEMBER 23, 1985

- 5 -

TURNING TO BANKING, SIR JOHN SAID THAT THE FAILURE OF TWO BANKS HAD PROPERLY RAISED QUESTIONS ABOUT THE ADEQUACY OF THE SYSTEM OF PRUDENTIAL SUPERVISION.

AFTER LENGTHY AND CAREFUL CONSULTATION WITH THE FINANCIAL COMMUNITY, VARIOUS AREAS FOR IMPROVEMENTS HAD BEEN IDENTIFIED. RECENT EVENTS HAD SHOWN THAT THE LIQUIDITY AND MINIMUM CAPITAL REQUIREMENTS IN THE BANKING AND DEPOSIT-TAKING COMPANIES ORDINANCES HAD TO BE TIGHTENED UP, AND CONSEQUENTLY NEW APPROACHES TO LIQUIDITY, CAPITAL ADEQUACY AND OTHER ITEMS OF CONCERN HAD BEEN DEVELOPED.

AREAS FOR IMPROVEMENT ALSO INCLUDED NEW STATISTICAL RETURNS TO ENABLE A CLOSER MONITORING OF FINANCIAL INSTITUTIONS BY THE COMMISSIONER OF BANKING AND DEPOSIT-TAKING COMPANIES, THE WIDER USE OF THE COMMISSIONER'S DISCRETIONARY POWERS ALREADY PROVIDED FOR IN THE TWO ORDINANCES GENERALLY TO ENSURE SOUND BUSINESS PRACTICE AMONG FINANCIAL INSTITUTIONS AND AN ENHANCED BASIS FOR INVOLVING AUDITORS WITH SUPERVISORS.

REFERRING TO +SOME MORE FAVOURABLE LAND SALES,+ SIR JOHN SAID THAT COUPLED WITH CONTINUING TIGHT CONTROLS OVER PUBLIC SECTOR EXPENDITURE AND GOOD YIELDS FROM TAXES AND DUTIES, THERE WERE INDICATIONS OF A PROBABLE IMPROVEMENT IN THE GOVERNMENT'S ACCOUNTS COMPARED WITH THE BUDGETED DEFICIT OF \$1 BILLION FOR 1985-86.

+NEXT FINANCIAL YEAR, GIVEN NO EXTERNAL SHOCKS, WE CAN STILL EXPECT BALANCE,+ HE SAID.

WITH REGARD TO PUBLIC SECTOR SPENDING, SIR JOHN SAID THAT THE RELATIVE SIZE OF THE PUBLIC SECTOR HAD BEEN REDUCED FROM 19.1 PER CENT OF GDP IN 1982-83 TO 18.6 PER CENT IN 1983-84, AND TO 16.1 PER CENT IN 1984-85.

+THE LATEST ESTIMATE OF EXPENDITURE ON THE CONSOLIDATED ACCOUNT FOR 1985-86, BASED ON PERFORMANCE OVER THE FIRST FIVE MONTHS, WAS \$43.9 BILLION, A DECREASE OF \$1.7 BILLION ON THE BUDGET ESTIMATE.

THIS WAS ATTRIBUTABLE MAINLY TO LOWER-THAN-EXPECTED CAPITAL EXPENDITURE DUE IN PART TO THE COMPLETION OF A NUMBER OF MAJOR PROJECTS, HE SAID.

REFERRING TO EXPORTS, SIR JOHN REVISED HIS FORECAST GROWTH RATE IN REAL TERMS OF TOTAL EXPORTS FOR THE YEAR TO 11 PER CENT COMPARED WITH HIS BUDGET FORECAST OF 18 PER CENT.

+BY WORLD STANDARDS THIS IS STILL PRETTY GOOD,+ HE SAID.

/SIR JOHN .....

SIR JOHN ALSO REVISED: PRIVATE CONSUMPTION EXPENDITURE IN REAL TERMS SLIGHTLY DOWNWARDS TO SIX PER CENT FROM SEVEN PER CENT, AND FORECAST PRIVATE SECTOR EXPENDITURE ON BUILDING AND CONSTRUCTION TO GROW BY AN INCREASED FIVE PER CENT IN REAL TERMS, AGAINST A BUDGET FORECAST OF TWO PER CENT, AND PRIVATE SECTOR INVESTMENT IN PLANT AND MACHINERY TO GROW AT SEVEN PER CENT, BELOW THE BUDGET FORECAST OF 16 PER CENT.

AS FOR PUBLIC SECTOR EXPENDITURE ON BUILDING AND CONSTRUCTION, HE SAID THAT, GIVEN THE COMPLETION OF A MAJOR PART OF THE MTR ISLAND LINE PROJECT AND A NUMBER OF MAJOR CAPITAL WORKS PROJECTS BY THE GOVERNMENT, HE FORECAST A DECLINE BY 16 PER CENT IN REAL TERMS, COMPARED WITH THE BUDGET FORECAST OF A DECLINE OF EIGHT PER CENT. PUBLIC SECTOR EXPENDITURE ON PLANT AND MACHINERY WAS FORECAST TO DECLINE BY 15 PER CENT IN REAL TERMS.

+THUS, TAKING GROSS DOMESTIC FIXED CAPITAL FORMATION AS A WHOLE, THE FORECAST GROWTH RATE IN REAL TERMS IS THREE PER CENT, AS COMPARED WITH THE BUDGET FORECAST OF FIVE PER CENT,+ HE SAID.

CONSISTENT WITH THE ABOVE REVISIONS, HE SAID, THE FORECAST GROWTH RATE IN REAL TERMS OF IMPORTS WAS ALSO REVISED DOWNWARDS TO 11 PER CENT.

+THE NET RESULT OF THE ABOVE REVISIONS IS TO REDUCE THE FORECAST GROWTH RATE IN REAL TERMS OF THE GDP IN 1985 TO 4.5 PER CENT TO FIVE PER CENT, FROM THE BUDGET FORECAST OF ABOUT SEVEN PER CENT AND THE ACHIEVED GROWTH RATE OF NINE PER CENT IN 1984.

+THIS IS DISAPPOINTING BUT HARDLY DRAMATIC. THERE ARE MANY OTHERS WHO WILL ENVY US,+ HE SAID.

THE REVISED FORECAST OF EXPENDITURE ON THE GDP IN 1985 WAS THUS \$188 BILLION AT CONSTANT (1980) PRICES. WITH A FORECAST INCREASE IN THE GDP DEFLATOR OF SEVEN PER CENT, THE REVISED FORECAST OF EXPENDITURE ON THE GDP AT CURRENT PRICES WAS \$278 BILLION.

IN PER CAPITA TERMS 1985 GDP AT CURRENT PRICES WAS FORECAST TO BE ABOUT \$51 280 (OR U.S.\$6 570), REPRESENTING AN ANNUAL GROWTH RATE OF 10 PER CENT IN MONEY TERMS OR THREE PER CENT IN REAL TERMS.

DUE PARTLY TO THE SLOWER GROWTH RATE OF OUTPUT, HIS FORECAST FOR THE INCREASE IN THE CONSUMER PRICE INDEX (A) WAS REVISED DOWNWARDS FROM 5.5 PER CENT TO FOUR PER CENT.

SIR JOHN SAID THAT ECONOMIC GROWTH IN 1985 WOULD CONTINUE TO BE EXPORT-LED, WITH MOST OF THE IMPETUS COMING FROM THE STRONG GROWTH IN RE-EXPORTS.

WITHIN DOMESTIC DEMAND, PRIVATE SECTOR DEMAND WAS EXPECTED TO GROW BY FIVE PER CENT IN REAL TERMS, WHILE PUBLIC SECTOR DEMAND WAS FORECAST TO DECLINE BY FOUR PER CENT, HE SAID.

WITH THE EXPECTED COMMENCEMENT OF THE TUEN MUN LIGHT RAIL SYSTEM IN 1986, SIR JOHN SAID, PUBLIC SECTOR EXPENDITURE ON BUILDING AND CONSTRUCTION WAS EXPECTED TO PICK UP AGAIN IN THE COMING YEAR OR SO.

+WE CAN LOOK FORWARD TO THE START OF CONSTRUCTION OF THE NEW EASTERN HARBOUR, THE TATE'S CAIRN AND THE SHATIN TUNNELS,+ HE SAID.

+THE GOVERNMENT REMAINS COMMITTED TO PROVIDING THE INFRASTRUCTURE THE COMMUNITY REQUIRES.+

SIR JOHN SAID THAT IT HAD, HOWEVER, TO BE RECOGNISED THAT THE ECONOMY REMAINED, AS ALWAYS, CRUCIALLY DEPENDENT ON TRADE AND VULNERABLE TO EXTERNAL FORCES OUTSIDE HONG KONG'S CONTROL.

THE WORLD ECONOMY WAS BY NATURE CYCLICAL AND CYCLICAL MOVEMENTS IN HONG KONG'S OWN ECONOMIC AND EXPORT PERFORMANCE COULD STILL BE EXPECTED IN FUTURE.

FROM THIS SPRUNG THE NEED TO BE VERY CAUTIOUS ABOUT THE PUBLIC FINANCES, HE SAID.

IN RECENT YEAR, HE SAID, CHINA HAD PROVIDED THE HONG KONG ECONOMY WITH A NEW SOURCE OF GROWTH.

+THE RAPIDLY EXPANDING VOLUME OF TRADE WITH CHINA HAS STRENGTHENED THE ECONOMIC TIES AND COOPERATION BETWEEN US, AND HONG KONG'S ROLE AS A MAJOR ENTREPOT FOR CHINA HAS RE-EMERGED.

+HONG KONG AS THE MAJOR FINANCIAL CENTRE IN THE ASIA-PACIFIC REGION, SHOULD ALSO BE ABLE TO INCREASE ITS CONTRIBUTION OF EXPERTISE IN THE FINANCIAL AND RELATED SERVICES THAT LINK CHINA WITH THE REST OF THE WORLD,+ HE SAID.

AMONG EXTERNAL ADVERSE FORCES THREATENING HONG KONG, CALLS FOR FURTHER PROTECTIONIST MEASURE IN PARTICULAR IN THE U.S. POSED THE MOST IMMEDIATE THREAT TO THE PERFORMANCE OF THE HONG KONG ECONOMY, SIR JOHN SAID.

+THE CONTROVERSIAL JENKINS BILL WOULD, IF PASSED INTO LAW, UNDERMINE NOT ONLY WORLD TRADE IN THE TEXTILES SECTOR, BUT ALSO THE MULTI-FIBRE ARRANGEMENT AND THE GATT ITSELF BECAUSE IT CONTRAVENES SOME OF THE VITAL PRINCIPLES UNDERLYING THOSE INTERNATIONAL AGREEMENTS.

+GIVEN THAT THE HONG KONG ECONOMY IS SMALL AND OPEN, SUCH TRENDS IN RISING PROTECTIONISM ARE VERY WORRYING INDEED.

MONDAY, SEPTEMBER 23, 1985

- 8 -

+I CAN ASSURE YOU THAT THE GOVERNMENT IS DOING ITS BEST TO LOOK AFTER OUR TRADING INTERESTS,+ HE SAID.

SUMMING UP, SIR JOHN SAID THAT HONG KONG'S EARLIER HOPES FOR 1985 WERE UNLIKELY TO BE ACHIEVED AS FAR AS THE GROWTH RATE OF THE ECONOMY WAS CONCERNED.

THE EXPECTED GROWTH RATE OF 4.5 PER CENT TO FIVE PER CENT NEVERTHELESS REMAINED HIGH BY WORLD STANDARDS, AND THE INFLATION AND UNEMPLOYMENT RATES WERE LOW.

MOREOVER, THE MODERATE REVIVAL IN THE PROPERTY MARKET SHOULD HELP REMEDY IMBALANCES IN THAT SECTOR.

+ALL IN ALL, THE OUTLOOK IS STEADY AS SHE GOES,+ SIR JOHN SAID.

- - - - 0 - - - -

PROPOSED REVISION OF TRADE BILL 'OBJECTIONABLE'  
\* \* \*

COMMENTING ON AN AMENDED VERSION OF THE TEXTILE AND APPAREL TRADE ENFORCEMENT BILL LIKELY TO BE PROPOSED THIS WEEK BY SENATOR THURMOND, THE DIRECTOR OF TRADE, MR HAMISH MACLEOD, SAID THAT THE BILL IF AMENDED AS ENVISAGED WAS STILL THOROUGHLY OBJECTIONABLE.

HE SAID ALTHOUGH THE PROPOSED CUTS HAVE BEEN LIMITED TO NOT MORE THAN 30 PER CENT IN ANY CATEGORY, THE REVISED BILL HAS SINGLED OUT THOSE WHO PROVIDE 10 PER CENT OR MORE OF THE UNITED STATES IMPORTS (PROVISIONALLY, KOREA, TAIWAN AND HONG KONG) FOR THE HARSHTEST TREATMENT.

+AS FAR AS HONG KONG IS CONCERNED, THE AMENDED BILL IS STILL UNJUST AND UNJUSTIFIED, AND CLEARLY INCONSISTENT WITH THE PHILOSOPHY OF FAIR TRADE ESPOUSED BY PRESIDENT REAGAN AND MANY OTHER UNITED STATES POLITICIANS.

+FURTHERMORE, OUR FUNDAMENTAL OBJECTION TO THEIR UNILATERAL APPROACH TO SOLVING TRADE PROBLEMS REMAINS, THE BILL, EVEN IF AMENDED, STILL RUNS COUNTER TO THE GATT, THE MFA AND THE UNITED STATES OBLIGATIONS UNDER EXISTING BILATERAL TEXTILE AGREEMENTS. THE LATEST VERSION IS MERELY A DIVISIVE PLOY. WE ARE AS DETERMINED AS EVER IN OPPOSING IT.+

/THE PRINCIPAL .....

MONDAY, SEPTEMBER 23, 1985

- 9 -

THE PRINCIPAL AMENDMENTS PROPOSED TO THE BILL INCLUDE:

- \* DEFINING AS +MAJOR EXPORTING COUNTRIES+ THOSE WHO PROVIDE 10 PER CENT OR MORE OF UNITED STATES IMPORTS (PROVISIONALLY, TAIWAN, KOREA AND HONG KONG -- THE EEC IS EXCLUDED FROM THE BILL). THIS GROUP IS SUBJECTED TO CUTBACKS AS BEFORE, WITH A MAXIMUM 30 PER CENT CUTBACK IN TRADE IN ANY CATEGORY FROM 1984 IMPORT LEVELS.
- \* DEFINING OTHER SUPPLIERS AS +EXPORTING COUNTRIES+ GENERALLY TO BE GIVEN NO GROWTH IN 1985 ON 1984 IMPORTS AND NOT MORE THAN ONE PER CENT GROWTH THEREAFTER.
- \* EXCLUDING DOLLS AND TOYS FROM THE BILL.
- \* PROVIDING FOR CUTBACKS IN NON-RUBBER FOOTWEAR IMPORTS.

THE BROAD EFFECT ON HONG KONG APPEARS TO BE TO CUT MFA EXPORTS BY AN AVERAGE OF ABOUT EIGHT PER CENT (COMPARED WITH 12 PER CENT UNDER THE ORIGINAL BILL), AND TO CUT NON-MFA EXPORTS BY ABOUT 30 PER CENT (COMPARED WITH 70 PER CENT). OTHER OBJECTIONABLE FEATURES IN THE ORIGINAL BILL REMAIN FOR HONG KONG AND OTHER SUPPLIERS.

+WE KNEW ABOUT THE POSSIBLE AMENDED VERSION LATE LAST WEEK. IN CONSULTATION WITH THE TEXTILES ADVISORY BOARD (TEXTAB), WE REVIEWED OUR TACTICS IN THE LIGHT OF THESE POSSIBLE AMENDMENTS, AND REVISED INSTRUCTIONS HAVE BEEN ISSUED TO OUR LOBBYISTS THROUGH MR DORWARD,+ MR MACLEOD ADDED.

+THE POSITION IS EXTREMELY FLUID AND WE HAVE TO REVIEW OUR TACTICS DAY BY DAY; TEXTAB MEETS AS FREQUENTLY AS REQUIRED.+

IN THE MEANTIME, THE ORIGINAL VERSION OF THE BILL HAS BEEN PASSED WITHOUT AMENDMENT BY THE HOUSE TRADE SUB-COMMITTEE AND IS DUE FOR CONSIDERATION BY THE WAYS AND MEANS COMMITTEE OF THE HOUSE OF REPRESENTATIVES ON SEPTEMBER 26. IN THE SENATE HEARINGS ON THE BILL BY THE FINANCE COMMITTEE WILL BE RESUMED ON SEPTEMBER 23.

+ALTHOUGH WE STILL EXPECT THE BILL TO REACH A CLIMAX SOME TIME IN OCTOBER,+ SAID MR MACLEOD,+THE SEQUENCE OF LEGISLATIVE EVENTS MAY CHANGE AND VARIOUS AMENDMENTS MAY BE PROPOSED, AS THE BILL PROGRESSES THROUGH CONGRESS. OR INDEED FASTER PROGRESS MAY BE OBTAINED IF THE BILL'S SUPPORTERS SUCCEED IN TAGGING IT ON TO SOME OTHER BILL ALREADY BEING PROCESSED THROUGH CONGRESS.

+THE TRADE DEPARTMENT IS IN DAILY CONTACT WITH HONG KONG'S LOBBYING TEAMS IN WASHINGTON. BESIDES CONSULTING TEXTAB, THE TRADE DEPARTMENT WILL CONTINUE TO KEEP MAJOR RELEVANT TRADE AND MANUFACTURING GROUPS IN HONG KONG INFORMED OF DEVELOPMENTS.+

- - - - 0 - - - -

/10 .....

MONDAY, SEPTEMBER 23, 1985

- 10 -

UK TRANSPORT CHIEF TOURS SHA TIN

\* \* \*

THE SECRETARY OF STATE FOR TRANSPORT, MR NICHOLAS RIDLEY TODAY (MONDAY) SAW VARIOUS DEVELOPMENTS IN SHA TIN DURING A VISIT TO THE NEW TOWN.

MR RIDLEY FIRST WENT TO THE LION'S PAVILION FOR A PANORAMIC VIEW OF THE NEW TOWN.

AFTER A BRIEFING ON SHA TIN'S DEVELOPMENTS BY DISTRICT OFFICER, MR LAM WOON-KWONG, HE WENT TO KAU TO HILL TO SEE THE NEWLY-COMPLETED TOLO HARBOUR COASTAL TRUNK ROAD LINKING SHA TIN AND TAI PO NEW TOWNS.

THE HIGHWAY IS SCHEDULED TO BE OPENED TO TRAFFIC ON WEDNESDAY (SEPTEMBER 25).

MR RIDLEY ALSO HEARD ABOUT THE DEVELOPMENT OF MA ON SHAN, WHICH IS THE MAIN EXTENSION TO SHA TIN NEW TOWN, AND THAT THE TARGET POPULATION OF 800 000 IN SHA TIN WAS EXPECTED TO BE REACHED BY THE 1990'S.

- - - 0 - - -

PUBLIC HELP URGED FOR DISTRICT OFFICE WORK

\* \* \* \*

THE WORKLOAD OF DISTRICT OFFICES HAD BECOME INCREASINGLY HEAVIER IN THE PAST FEW YEARS WITH THE RAPID DEVELOPMENT OF DISTRICT ADMINISTRATION, THE REGIONAL SECRETARY FOR HONG KONG AND KOWLOON, MR BARRIE WIGGHAM, SAID TODAY (MONDAY).

+THOUGH ALL OUR STAFF ARE DOING THEIR BEST, IT IS DIFFICULT TO REACH OUR TARGET WITHOUT THE HELP AND UNDERSTANDING OF THE PUBLIC,+ HE SAID.

HE SAID THE DISTRICT BOARD ELECTIONS, THE URBAN COUNCIL ELECTION, THE VOTER REGISTRATION EXERCISES, PUBLIC CONSULTATIONS ON THE +GREEN PAPER ON THE FURTHER DEVELOPMENT OF REPRESENTATIVE GOVERNMENT IN HONG KONG+ AND THE SINO-BRITISH DRAFT AGREEMENT ON THE FUTURE OF HONG KONG, AND THE FIRST LEGISLATIVE COUNCIL ELECTION THIS THURSDAY, WERE EXAMPLES OF THE EXTENSIVE WORK DISTRICT OFFICE STAFF ARE INVOLVED IN.

MR WIGGHAM WAS SPEAKING AT THE OPENING CEREMONY OF THE NEW CENTRAL AND WESTERN DISTRICT OFFICE THIS MORNING ON THE 11TH FLOOR OF THE NEW HARBOUR BUILDING IN CENTRAL.

/THE NEW .....

MONDAY, SEPTEMBER 23, 1985

- 11 -

THE NEW PREMISES IS LOCATED NEAR THE OUTLYING ISLANDS FERRY PIER IN CENTRAL, AND THE DISTRICT OFFICE OCCUPIES A FLOOR AREA OF ABOUT 655 SQUARE METRES, INCLUDING A STANDARD-SIZED PUBLIC ENQUIRY SERVICES COUNTER OPERATING ON THE GROUND FLOOR.

MR WIGGHAM SAID THE NEW OFFICES WOULD PROVIDE THE STAFF WITH MORE EFFICIENT COMMUNICATION, AND MAKE IT MORE CONVENIENT FOR MEMBERS OF THE PUBLIC TO REACH THEM.

MORE THAN 300 GUESTS, INCLUDING DISTRICT BOARD MEMBERS, LOCAL COMMUNITY LEADERS AND REPRESENTATIVES OF VARIOUS GOVERNMENT DEPARTMENTS, ATTENDED TODAY'S RECEPTION.

- - - - 0 - - - -

SPECIAL MEETING TO DISCUSS HOUSING GREEN PAPER  
\* \* \* \*

KWAI CHUNG AND TSING YI DISTRICT BOARD MEMBERS WILL ATTEND A SPECIAL MEETING OF THE BOARD'S COMMUNITY AFFAIRS COMMITTEE TO DISCUSS THE +GREEN PAPER ON HOUSING SUBSIDY TO TENANTS OF PUBLIC HOUSING+ TOMORROW (TUESDAY) AFTERNOON.

THE ASSISTANT DIRECTOR OF HOUSING (ESTATE MANAGEMENT), MR CHAN PAK; AND A MEMBER OF THE OPERATIONS COMMITTEE OF THE HONG KONG HOUSING AUTHORITY AND THE COMMITTEE ON HOUSING SUBSIDY TO TENANTS OF PUBLIC HOUSING, MR CHEUNG KIN-CHUNG, WILL BE PRESENT TO LISTEN TO MEMBERS' VIEWS ON THE GREEN PAPER.

- - - - 0 - - - -

PROVISIONAL COUNCIL ENDORSES BUDGET PROPOSAL  
\* \* \* \*

THE WAYS AND MEANS SELECT COMMITTEE OF THE PROVISIONAL REGIONAL COUNCIL TODAY (MONDAY) ENDORSED A PROVISIONAL ACCEPTABLE LEVEL (PAL) OF EXPENDITURE OF \$869 MILLION PROPOSED FOR USE IN THE PREPARATION OF THE REGIONAL COUNCIL'S BUDGET FOR 1986-87.

IN SUBMITTING THE PROPOSAL AT THE MONTHLY MEETING, THE SENIOR TREASURY ACCOUNTANT OF THE REGIONAL SERVICES DEPARTMENT, MRS MARIA YIP, RECALLED THAT AT A PREVIOUS COUNCIL MEETING IN JUNE, MEMBERS WHILE CONSIDERING A COMMITTEE PAPER IN RESPECT OF THE FIVE-YEAR FORECAST OF REVENUE AND EXPENDITURE 1985-86 TO 1989-90, WERE INFORMED THAT THE REGIONAL COUNCIL'S ANNUAL BUDGET WOULD BE PREPARED WITHIN THE FRAMEWORK OF A +PAL+ FIGURE APPROVED BY THE COUNCIL AND THAT THEIR ENDORSEMENT OF THE +PAL+ FOR 1986-87 WOULD BE SOUGHT IN DUE COURSE.

/SEE EXPLAINED .....

SHE EXPLAINED THAT THE SYSTEM OF PREPARING ANNUAL FIVE-YEAR FORECAST OF EXPENDITURE AND REVENUE WAS INTRODUCED BY GOVERNMENT SOME YEARS AGO AS A BUDGET MANAGEMENT TOOL. IT CALLS FOR THE PREPARATION, ANNUALLY, OF FIVE-YEAR FORECASTS ON A ROLL-FORWARD BASIS BY ALL GOVERNMENT DEPARTMENTS, WHICH ARE THEN COLLATED AND ASSESSED BY THE FINANCE BRANCH OF THE GOVERNMENT SECRETARIAT.

+BUT THE 'PAL' FIGURE RELATES TO AND APPLIES ONLY TO THE FIRST YEAR OF THE FIVE-YEAR FORECAST PERIOD,+ SHE SAID.

REFERRING TO THE \$869 MILLION +PAL+, SHE SAID, IT REPRESENTED THE TOTAL RECURRENT EXPENDITURE FOR 1986-87 (EXCLUDING THE COST OF CAPITAL WORK) ESTIMATED BY THE REGIONAL SERVICES DEPARTMENT.

SHE SAID THAT FOLLOWING THE ENDORSEMENT OF THE +PAL+, THE RSD WOULD PROCEED TO PREPARE THE DETAILED DRAFT ESTIMATE FOR 1986-87.

- - - - 0 - - - -

BOARD TO COMMENT ON ACTION AGAINST +RIP-OFF+ BARS  
\* \* \* \*

THE CHAIRMAN OF THE URBAN COUNCIL'S LIQUOR LICENSING BOARD, MR PETER C.K. CHAN, WILL MAKE A STATEMENT ON ACTION AGAINST +RIP-OFF+ BARS AT THE BOARD'S MEETING ON WEDNESDAY (SEPTEMBER 25).

DURING THE MEETING, THE BOARD WILL ALSO CONSIDER THE FOLLOWING APPLICATIONS FOR LIQUOR LICENCES FROM :

THE 747 RESTAURANT AND BAR (WINDSOR) IN LOCKHART ROAD, WAN CHAI CHIU CHOW KUI RESTAURANT IN SALISBURY ROAD, TSIM SHA TSUI KHYBER RESTAURANT IN ASHLEY ROAD, TSIM SHA TSUI FOUR SISTERS' CAFE IN MINDEN ROW, TSIM SHA TSUI SEOUL HOUSE RESTAURANT IN HILLWOOD ROAD, TSIM SHA TSUI LYCHEE VILLAGE RESTAURANT IN CAMERON ROAD, TSIM SHA TSUI SHING YUEN RESTAURANT IN LUNG KONG ROAD, KOWLOON CITY AND HOI KEE RESTAURANT IN LUNG KONG ROAD, KOWLOON CITY.

THE BOARD WILL ALSO DECIDE ON AN APPLICATION BY THE POLICE FOR REVOCATION OF THE LIQUOR LICENCE OF THE GOLDEN PALACE NIGHT CLUB IN NATHAN ROAD, MONG KOK.

NOTE TO EDITORS:

YOU ARE INVITED TO SEND A REPORTER AND/OR PHOTOGRAPHER TO COVER THE MEETING WHICH WILL BEGIN AT THE URBAN COUNCIL CHAMBERS, EDINBURGH PLACE, AT 8.30 A.M. ON WEDNESDAY SEPTEMBER 25.

- - - - 0 - - - -

MONDAY, SEPTEMBER 23, 1985

- 13 -

'MEDICAL CARE WITHIN EASY REACH OF ALL'  
\* \* \* \*

IN THE PAST FIVE YEARS THE GOVERNMENT HAS SPENT \$885 MILLION ON NEW HOSPITALS AND \$183 MILLION ON CLINICS TO BRING HIGH-QUALITY MEDICAL TREATMENT WITHIN EASY REACH OF ALL, THE SECRETARY FOR LANDS AND WORKS, MR NICKY CHAN, SAID AT A LUNCHEON MEETING OF THE TUNG WAH GROUP OF HOSPITALS TODAY (MONDAY).

+IN THE CURRENT FINANCIAL YEAR SOME \$312 MILLION, NEARLY SIX PER CENT OF TOTAL EXPENDITURE IN THE CAPITAL WORKS PROGRAMME, HAS BEEN ALLOCATED TO MEDICAL AND HEALTH PROJECTS.

+CONSTRUCTION IS NOW IN HAND ON A MAJOR NEW HOSPITAL AT TUEN MUN. THE HOSPITAL WILL COST SOME \$900 MILLION AND WILL PROVIDE 1 600 BEDS, MAKING IT ONE OF THE LARGEST HOSPITALS BEING BUILT IN THE WORLD,+ MR CHAN SAID.

WORK HAD ALSO BEGUN ON SITE FORMATION FOR THE SHAU KEI WAN HOSPITAL AND POLYCLINIC. THE ESTIMATED COST WAS OVER \$1.2 BILLION AND IT WOULD PROVIDE 1 580 ADDITIONAL BEDS ON COMPLETION IN 1991, HE ADDED.

+THESE FIGURES ARE FAIRLY BREATHTAKING IN THEMSELVES, BUT THEY ARE FAR FROM THE WHOLE STORY. AT PRESENT THERE ARE A TOTAL OF 38 MEDICAL ITEMS IN CATEGORIES A AND AB OF THE PUBLIC WORKS PROGRAMME ON WHICH WORK HAS ALREADY STARTED OR IS DUE TO START IN THE NEXT TWO YEARS.

+THEY INCLUDE NOT ONLY NEW HOSPITALS AND CLINICS BUT A RANGE OF OTHER IMPORTANT ANCILLARY SERVICES SUCH AS NURSE TRAINING SCHOOLS AND OTHER SPECIALIST FACILITIES.

+AT A COST OF OVER \$4 BILLION THEY REPRESENT A FORMIDABLE COMMITMENT ON TECHNICAL AND PLANNING RESOURCES OF THE BUILDING DEVELOPMENT DEPARTMENT AND THE MEDICAL AND HEALTH DEPARTMENT.+

MR CHAN SAID THAT HIS CONCENTRATION ON GOVERNMENT PROJECTS WAS NOT INTENDED TO BELITTLE THE SCALE OF BUILDING ACTIVITY IN THE SUBVENTED SECTOR.

HE POINTED OUT THAT IN THE 1985-86 FINANCIAL YEAR THE GOVERNMENT WAS COMMITTED TO SPENDING OVER \$1 BILLION ON CAPITAL GRANTS TO SUBVENTED HOSPITALS, THE BULK OF WHICH WOULD GO TOWARDS FINANCING NEW HOSPITAL BUILDING.

+MAJOR PROJECTS IN HAND INCLUDE THE EXTENSIONS TO CARITAS MEDICAL CENTRE AT A TOTAL COST OF \$130 MILLION, CONTINUING DEVELOPMENT OF THE YAN CHAI AND POK OI HOSPITALS IN THE NEW TERRITORIES, COSTING \$300 MILLION AND \$56 MILLION RESPECTIVELY, AND THE CONTINUING DEVELOPMENT AND IMPROVEMENT OF FACILITIES AT THE TUNG WAH GROUP'S HOSPITALS.

/+THESE INCLUDE .....

MONDAY, SEPTEMBER 23, 1985

- 14 -

+THESE INCLUDE THE CONSTRUCTION OF A NEW BLOCK FOR PARAMEDICAL SERVICES AT THE TUNG WAH EASTERN HOSPITAL, COSTING \$40 MILLION AND DUE FOR COMPLETION IN 1988.+

MR CHAN SAID THE LARGEST SINGLE PROJECT IN THE SUBVENTED SECTOR WAS THE \$680 MILLION EXTENSION TO THE UNITED CHRISTIAN HOSPITAL. THIS WOULD PROVIDE AN ADDITIONAL 725 BEDS AND A FULL RANGE OF SUPPORTING FACILITIES.

- - - - 0 - - - -

#### NEED FOR MANAGEMENT TALENT STRESSED

\* \* \* \*

THE CHALLENGE AND OPPORTUNITY FACING HONG KONG OVER THE NEXT FEW YEARS WAS TO CREATE A POOL OF PROFESSIONAL MANAGEMENT TALENT THAT WOULD BE LOOKED ON INTERNATIONALLY AS HONG KONG'S CONTRIBUTION TO THE REGION, DIRECTOR OF THE VOCATIONAL TRAINING COUNCIL'S MANAGEMENT DEVELOPMENT CENTRE, DR R.I. TRICKER, SAID TODAY.

SPEAKING AT A LUNCHEON MEETING OF THE AMERICAN CHAMBER OF COMMERCE THIS (MONDAY) AFTERNOON, DR TRICKER SAID HONG KONG HAD BEEN RECOGNISED AS A CENTRE FOR SHIPPING, COMMUNICATIONS, FINANCE AND TRADE, BUT NOT AS A CENTRE FOR MANAGEMENT.

+IF HONG KONG IS TRULY TO FULFIL ITS POTENTIAL AS A HUB OF MULTI-NATIONAL COMPANIES' ASIAN OPERATIONS AND THE PORT OF ACCESS BETWEEN THE WORLD AND CHINA, THE NEEDS FOR SKILLED AND EXPERIENCED MANAGEMENT MUST BE MET,+ HE SAID.

THERE WAS ALREADY A SHORTAGE OF PEOPLE WITH GENERAL MANAGEMENT ABILITY, ABLE TO OPERATE JOINT-VENTURES WITH CHINESE BUSINESS, OF LOCAL GENERAL MANAGERS ABLE TO PLAY THEIR PART IN MULTI-NATIONAL CORPORATIONS, AND OF MIDDLE AND SENIOR MANAGERS COMPETENT TO COPE WITH THE GROWING COMPLEXITY AND ACCELERATING RATE OF CHANGE IN HONG KONG BASED COMPANIES.

SPEAKING OF THE MANAGEMENT DEVELOPMENT CENTRE, HE SAID ITS FUNCTION WAS TO UNDERTAKE RESEARCH, TO DEVELOP PROGRAMMES AND THE MATERIALS THAT COULD BE USED BY COMPANIES AND THE EXISTING TEACHING INSTITUTIONS, TO COORDINATE THE ACTIVITIES OF THE EXISTING MANAGEMENT TEACHING INSTITUTIONS, AND TO PROMOTE THE IMPORTANCE OF EFFECTIVE MANAGEMENT DEVELOPMENT AND TRAINING.

- - - - 0 - - - -

/15 .....

MONDAY, SEPTEMBER 23, 1985

- 15 -

THIRD MEETING  
\* \* \*

THE TRAFFIC AND TRANSPORT COMMITTEE OF THE CENTRAL AND WESTERN DISTRICT BOARD WILL HOLD ITS THIRD MEETING AT 2.30 PM TOMORROW (TUESDAY) IN THE CONFERENCE ROOM OF THE DISTRICT OFFICE, HARBOUR BUILDING, 14TH FLOOR, AT 38 PIER ROAD, CENTRAL.

- - - - 0 - - - -

'EDUCATION FOR OFFENDERS'  
\* \* \* \*

THE COMMISSIONER OF CORRECTIONAL SERVICES, MR CHAN WA-SHEK, WILL GIVE A TALK ON +EDUCATION FOR OFFENDERS+ AT THE LUNCHEON MEETING OF THE ROTARY CLUB OF KOWLOON EAST IN THE CHING ROOM OF THE SHERATON HOTEL AT 1 PM TOMORROW (TUESDAY).

HIS TALK WILL BE DELIVERED IN CANTONESE.

- - - - 0 - - - -

QUARTERS TO BE BUILT AT POKFULAM FIRE STATION  
\* \* \* \* \*

A 27-STOREY HOUSING BLOCK WILL BE BUILT IN POKFULAM AT THE END OF THE MONTH TO PROVIDE HOMES FOR FIRE STATION STAFF.

IT WILL INCLUDE TWO STOREYS OF CAR PARKS AND 50 UNITS OF OFFICERS' QUARTERS.

THE BUILDING DEVELOPMENT DEPARTMENT HAS AWARDED THE \$33 MILLION CONTRACT FOR CONSTRUCTION OF THE BUILDING WHICH IS EXPECTED TO BE COMPLETED BY MAY 1987.

THE QUARTERS WILL FORM PART OF AN \$83 MILLION POKFULAM DIVISIONAL FIRE STATION AND AMBULANCE DEPOT COMPLEX ON THE CORNER OF POKFULAM AND VICTORIA ROADS.

THE COMPLEX WILL COMPRISES A STANDARD FOUR-STOREY AMBULANCE DEPOT, A STANDARD THREE-STOREY DIVISIONAL FIRE STATION FOR 10 FIRE APPLIANCES, DUTY AND SERVICE ROOMS, BARRACKS, CANTEEN AND RECREATIONAL ROOMS AND THE HOUSING BLOCK.

A DRILL TOWER, DRILL YARD, DANGEROUS GOODS STORES AND FOAM STORES WILL ALSO BE BUILT.

- - - - 0 - - - -

MONDAY, SEPTEMBER 23, 1985 .

- 16 -

CONTROL OF HOMES FOR ELDERLY UNDER STUDY  
\*\*\*

MEMBERS OF THE SOCIAL WELFARE ADVISORY COMMITTEE TODAY ADVISED THAT WHILE THERE WERE +NO COMPELLING REASONS TO IMPOSE IMMEDIATELY+ LEGISLATIVE CONTROL OVER PRIVATE HOMES FOR THE ELDERLY, SUCH CONTROL MIGHT BE NECESSARY IN THE LONG TERM. SUCH CONTROLS WOULD BE TO ENSURE AN ADEQUATE STANDARD OF SERVICE, PARTICULARLY THE SAFETY AND HEALTH ASPECTS.

HOWEVER, MEMBERS FELT THAT INITIALLY, GUIDANCE SHOULD BE GIVEN TO OPERATORS THROUGH A CODE OF PRACTICE.

THE COMMITTEE HAD CONSIDERED A SURVEY REPORT ON THESE PRIVATE HOMES, AND NOTED THAT IN GENERAL, EXISTING SERVICES GAVE NO CAUSE FOR CONCERN.

TO ENABLE FURTHER CONSIDERATION TO BE GIVEN TO THE MOST APPROPRIATE FORM OF LEGISLATIVE CONTROL, MEMBERS FELT THAT IT WOULD BE NECESSARY TO TAKE INTO ACCOUNT THE EXPERIENCES OF OTHER COUNTRIES AND TO CONSULT OTHER GOVERNMENT DEPARTMENTS.

FOR THE PRESENT, THE COMMITTEE ADVISED THAT THE SOCIAL WELFARE DEPARTMENT SHOULD CONTINUE TO PERFORM AN ADVISORY ROLE, AND TO PAY LIAISON VISITS TO THESE HOMES TO OFFER ASSISTANCE TO THE OPERATORS AND RESIDENTS WHEN NECESSARY.

THE COMMITTEE ALSO ENDORSED AND COMMENTED ON A NUMBER OF PROPOSED IMPROVEMENTS TO THE PUBLIC ASSISTANCE AND SPECIAL NEEDS ALLOWANCE SCHEMES AND TO THE CRIMINAL AND LAW ENFORCEMENT INJURIES SCHEME AND THE EMERGENCY RELIEF FUND. IF THESE IMPROVEMENTS WERE ACCEPTED, THEY WOULD ALSO APPLY TO THE TRAFFIC ACCIDENT VICTIMS ASSISTANCE SCHEME.

THE VIEWS OF THE COMMITTEE WOULD BE TAKEN INTO ACCOUNT BY THE GOVERNMENT WHEN DECIDING ON IMPROVEMENTS TO THE VARIOUS SCHEMES.

- - - - 0 - - - -

ONE MAIL DELIVERY NEXT MONDAY  
\*\*\*

THERE WILL BE ONE MAIL DELIVERY ON SEPTEMBER 30 (MONDAY), WHICH IS A PUBLIC HOLIDAY, THE POSTMASTER GENERAL ANNOUNCED TODAY (MONDAY).

THIRTY-NINE POST OFFICES INCLUDING THE GENERAL POST OFFICE ON HONG KONG ISLAND, KOWLOON CENTRAL AND TSIM SHA TSUI POST OFFICES IN KOWLOON, AND TSUEN WING STREET, SHA TIN CENTRAL AND TAI PO POST OFFICES IN THE NEW TERRITORIES WILL BE OPEN FOR BUSINESS FROM 9 AM TO NOON THAT DAY.

DETAILS OF THE OTHER POST OFFICES WHICH WILL BE OPEN CAN BE OBTAINED FROM ANY POST OFFICE OR FROM THE POST OFFICE ENQUIRY BUREAU AT 5-231071 OR 5-231072.

- - - - 0 - - - -

/17 .....

MONDAY, SEPTEMBER 23, 1985

- 17 -

## ROAD SAFETY DRIVE STARTS WITH TV SHOW

\* \* \* \*

THIS YEAR'S ROAD SAFETY CAMPAIGN GETS UNDERWAY TOMORROW WITH A ONE-AND-A-HALF HOUR LIVE TELEVISION SHOW.

THE +ROAD SAFETY NIGHT+ PROGRAMME, JOINTLY ORGANISED BY THE ROAD SAFETY PUBLICITY COMMITTEE AND TELEVISION BROADCASTS LIMITED, WILL BE AIMED AT DRIVERS, PEDESTRIANS, AND CYCLISTS, WITH EMPHASIS ON THE USE OF HIGH-CAPACITY ROADS.

A SPOKESMAN FOR THE ROAD SAFETY PUBLICITY COMMITTEE SAID THAT AS MORE HIGH-CAPACITY ROADS WOULD BE OPENED IN THE NEAR FUTURE, DRIVERS SHOULD LEARN HOW TO DRIVE SAFELY ON THEM AND WHAT TO DO IN CASE OF VEHICLE BREAKDOWNS OR EMERGENCIES.

PEDESTRIANS SHOULD ALSO LEARN TO USE FOOTBRIDGES AND FOOTPATHS, AND CYCLISTS SHOULD LEARN TO USE THE CYCLE TRACKS WHEN TRAVELLING ON THESE HIGH-CAPACITY ROADS, HE ADDED.

FEATURES ABOUT THE SHA TIN-FANLING SECTION OF THE NEW TERRITORIES TRUNK ROAD, WHICH WILL BE OPENED BY THE GOVERNOR TOMORROW, WILL ALSO BE SCREENED DURING THE PROGRAMME.

THE PROGRAMME WILL INCLUDE A LYRICS COMPETITION FOR CHILDREN AGED 11 OR BELOW, A HOME QUIZ, AND SINGING AND DANCING PERFORMANCES, ALL CENTRED ON THE ROAD SAFETY THEME.

+EACH PARTICIPANT WILL HAVE TO SING ANY ONE OF THE THREE LYRICS WRITTEN BY THE ORGANISERS,+ THE SPOKESMAN EXPLAINED. +AND EACH LYRIC HAS A SEPARATE THEME, EITHER ON PEDESTRIAN SAFETY, CYCLING SAFETY OR DRIVING SAFETY.+

SIX FINALISTS WILL COMPETE ON THE SHOW. THE CHAMPION, AND FIRST AND SECOND RUNNERS-UP WILL BE AWARDED SCHOLARSHIPS OF \$5 000, \$3 000, AND \$2 000 RESPECTIVELY BY THE MANAGING DIRECTOR OF CALTEX OIL HONG KONG LIMITED, MR W.A. BEST, JR.

THE THREE CONSOLATION PRIZE WINNERS WILL EACH RECEIVE \$1 000.

THE HOME QUIZ IS A WRITE-IN GAME OPEN TO THE HOME AUDIENCE WHO MUST PICK THE WINNER OF A PRE-FILMED CHARITY WALK BY EIGHT CELEBRITIES ON THE SHA TIN-FANLING SECTION OF THE N.T. TRUNK ROAD.

ASSISTANT DIRECTOR OF INFORMATION SERVICES DEPARTMENT, MR PETER MOSS WILL OFFICIATE AT A LUCKY DRAW TO PICK 10 WINNERS FROM THE HOME AUDIENCE WHO HAVE MADE THE CORRECT CHOICE. EACH WINNER WILL BE AWARDED A CASH PRIZE OF \$1 000.

DURING THE +ROAD SAFETY NIGHT+ PROGRAMME, THE AUDIENCE WILL ALSO BE ABLE TO VIEW DOCUMENTARIES ABOUT VARIOUS TRAFFIC BLACK SPOTS, THE ROAD SAFETY BUS, AND THE OPENING OF THE SHA TIN-FANLING SECTION OF THE N.T. TRUNK ROAD.

MONDAY, SEPTEMBER 23, 1985

- 18 -

THE ROAD SAFETY PUBLICITY COMMITTEE HAD IN THE PAST ORGANISED AN ANNUAL PUBLICITY FUNCTION TO START OFF THE ROAD SAFETY CAMPAIGN, THE SPOKESMAN SAID.

THIS YEAR, WE HAVE ADOPTED A DIFFERENT FORMAT, USING TELEVISION TO REACH MORE PEOPLE, HE SAID.

+ROAD SAFETY NIGHT+ IS SPONSORED BY CALTEX OIL HONG KONG LIMITED. IT WILL BE BROADCAST LIVE ON THE JADE'S CHANNEL'S +ENJOY YOURSELF TONIGHT+ PROGRAMME AT 9.35 PM TOMORROW (TUESDAY).

- - - - 0 - - - -

MORE POSTAL COUNTERS TO COPE WITH 'FLOWER' RUSH

\* \* \* \* \*

ADDITIONAL COUNTERS AT 17 POST OFFICES WILL BE SET ASIDE FOR NORMAL POSTAL BUSINESS ON WEDNESDAY (SEPTEMBER 25) TO COPE WITH THE EXPECTED RUSH WHEN THE SPECIAL +FLOWERS OF HONG KONG+ STAMP SET IS PUT ON SALE THAT DAY.

A POST OFFICE SPOKESMAN ANNOUNCED TODAY (MONDAY) THAT THE HONG KONG ISLAND OUTLETS WERE THE GENERAL POST OFFICE, BEACONSFIELD HOUSE, CAUSEWAY BAY, HENNESSY ROAD, MORRISON HILL, NORTH POINT, QUEEN'S ROAD AND SHEUNG WAN, WHILE IN KOWLOON AND THE NEW TERRITORIES THEY WERE KOWLOON CENTRAL, CHEUNG SHA WAN, GILLIES AVENUE, KOWLOON CITY, KWUN TONG, MONG KOK, SHAM SHUI PO, TSIM SHA TSUI AND TSUEN WAN.

MORE STAFF WOULD BE ON DUTY, BUT AS LONG QUEUES OF PEOPLE ARE EXPECTED, MEMBERS OF THE PUBLIC ARE REQUESTED TO BE TOLERANT AND, IF POSSIBLE, TO TRANSACT THEIR NORMAL POSTAL BUSINESS ON THE DAY BEFORE OR AFTER THE ISSUE OF THE SPECIAL STAMPS, HE SAID.

- - - - 0 - - - -

BOARD MEMBERS SEE KCRC CONTROL CENTRE

\* \* \* \* \*

SHA TIN DISTRICT BOARD MEMBERS TODAY (MONDAY) TOURED THE KOWLOON-CANTON RAILWAY CORPORATION CONTROL CENTRE TO SEE HOW IT OPERATES.

LED BY THE BOARD CHAIRMAN, MR NG CHAN-LAM, MEMBERS FIRST TOURED THE CONTROL CENTRE AT THE KOWLOON STATION IN HUNG HOM, WATCHING THE OPERATION OF THE AUTOMATIC REVENUE COLLECTION CONTROL SYSTEM.

/THEY THEN .....

MONDAY, SEPTEMBER 23, 1985

- 19 -

THEY THEN BOARDED A SPECIAL TRAIN FOR THE ELECTRICAL MULTIPLE UNIT DEPOT AND HO TUNG LAU WORKSHOP, AND WERE GIVEN A BRIEFING ON DEVELOPMENT PLANS BY KCRC MANAGING DIRECTOR, MR PETER QUICK, AT THE HEAD OFFICE IN SHA TIN.

WHAT THEY LEARNED DURING THE VISIT WOULD BE USEFUL TO MEMBERS WHEN EXPLAINING ISSUES RELATED TO THE KCRC AT MEETINGS WITH THE PUBLIC, BOARD CHAIRMAN, MR NG CHAN-LAM, SAID AFTER THE TOUR.

ACCOMPANYING THE GROUP DURING TODAY'S VISIT WAS SHA TIN DISTRICT OFFICER, MR LAM WOON-KWONG.

- - - - 0 - - - -

SAI YING PUN WATER CUT  
\* \* \*

FRESH WATER SUPPLY TO CERTAIN PREMISES IN SAI YING PUN WILL BE TURNED OFF FROM 11 PM ON THURSDAY (SEPTEMBER 26) TO 6 AM THE FOLLOWING DAY FOR LEAKAGE TEST.

THE AFFECTED AREA IS BOUNDED BY CONNAUGHT ROAD WEST, EASTERN STREET, QUEEN'S ROAD WEST AND WESTERN STREET.

- - - - 0 - - - -

WATER STORAGE FIGURE  
\* \* \*

STORAGE IN HONG KONG'S RESERVOIRS AT 9 AM TODAY (MONDAY) STOOD AT 79.4 PER CENT OF CAPACITY OR 465.581 MILLION CUBIC METRES.

THIS TIME LAST YEAR THE RESERVOIRS CONTAINED 506.740 MILLION CUBIC METRES OF WATER, REPRESENTING 86.5 PER CENT OF CAPACITY.

- - - - 0 - - - -



# DAILY INFORMATION BULLETIN – SUPPLEMENT

ISSUED BY GOVERNMENT INFORMATION SERVICES  
BEACONSFIELD HOUSE, HONG KONG. TEL: 5-233191

MONDAY, SEPTEMBER 23, 1985

PRESS ARRANGEMENTS FOR THE COVERAGE OF  
THE LEGISLATIVE COUNCIL ELECTIONS ON

SEPTEMBER 26, 1985

## Legislative Council Elections

September 26, 1985

### Media Arrangements

#### Introduction

A total of 64 candidates have come forward for the Legislative Council elections to be held on September 26, 1985. Of them, six are uncontested, leaving 58 candidates to compete for a total of 18 elected seats - 38 for 11 electoral college seats and 20 for 7 functional constituency seats.

A list of all candidates is at Annex A.

A table showing the constituencies for which elections are to be held is at Annex B.

#### A. ELECTORAL COLLEGE

Since the Provisional Regional Council constituency is uncontested, there will only be 11 polling stations altogether, one for each constituency. Voting will be by a repeated ballot system.

The first poll for all geographical constituencies will take place between 10 am and 10.30 am. If it is necessary for any subsequent polls to be taken, these will also be of 30-minute duration and commence 45 minutes after the declaration of the results of the immediate preceding poll.

The first poll for the Urban Council constituency will take place between 3 pm and 3.30 pm.

#### Media Arrangements

The hall/conference room which has been gazetted as a polling/counting station will consist of two parts. Part A of the room/hall will be the polling/counting station proper where the issuing of ballot papers and the casting of votes will be done.

/Part B...

Part B of the room/hall which is outside the boundary of the polling station is the waiting area where electors assemble before and after the casting of votes and before the result of the poll is announced. Part A and B will be separated by screens. After all electors have cast their votes or when the polling time is up, the polling station will become the counting station. A sketch plan of a typical polling/counting station is at Annex C and a list of all polling stations is at Annex D.

The media will be allowed inside the polling/counting stations and the waiting areas for electors only during the following specific times:

- (1) Before polling - Prior to 9.30 am media representatives can go into the waiting areas for electors, which is either partitioned off from the voting/counting station or for some constituencies, is situated in a separate room altogether, to take pictures of them assembling. They will not be able to go into the waiting area during the intervening periods between polls. For the Urban Council constituency, they can photograph electors assembling in the waiting room before 2.30 pm.
- (2) Beginning of counting - at the end of each poll, media representatives will be able to photograph the ballot boxes being opened and the ballot papers being removed from the boxes. They will not be able to photograph the counting of votes.
- (3) Declaration of counting results - the media will be able to cover the declaration of results when the counting of votes is finished.

GIS officers will be present at all polling stations to assist. If media representatives wish to interview a particular candidate/elector, they should contact the Information Officer

/there who will...

there who will approach the candidate/elector concerned and on his/her agreement, will arrange the interview to be conducted in an area outside the room. Full details of the result of each poll will be issued by GIS over the teleprinter and facsimile systems.

B. FUNCTIONAL CONSTITUENCIES

Elections of the functional constituencies will take the form of a preferential voting system. There will be 33 polling stations for the seven contested constituencies. There will be no special facilities for the media at these polling stations.

The counting of votes for all functional constituencies will take place in the arena of the Queen Elizabeth Stadium (QES) in Oi Kwan Road, Wan Chai, where there will be special arrangements for the media.

The counting of votes will be conducted in the following order, commencing around 7:45 pm:-

<u>Order</u>	<u>Functional Constituency</u>	<u>No. of Electors</u>
1	Social Services	145
2	Commercial I	1,244
3	Industrial II	1,284
4	Legal	978
5	Engineering etc	2,314
6	Medical	2,934
7	Teaching	34,182

Counting will be conducted on the basis of one functional constituency at any one time, with the possible exception of the counting for the engineering and medical functional constituencies which

/could be held...

could be held simultaneously. Barring unforeseen circumstances, the entire process can be expected to finish by 2 am on September 27.

Full polling results for each constituency will be issued over the teleprinter and facsimile networks.

A sketch of the counting station at QES is at Annex E.

#### Media Arrangements

Once balloting of a constituency is completed, the ballot boxes will be taken to the counting centre in Queen Elizabeth Stadium. Media representatives will be able to go into the arena to cover the opening of the ballot boxes but will not be able to cover the actual counting of votes.

The Returning Officer will announce the results of each constituency once they are confirmed. The media will be escorted by GIS officers into the arena to just in front of the stage to cover these announcements.

In addition, with the permission of the Returning Officer, television and radio reporters will be able to do "live" reports for their main newscasts from sections 1 and 8 spectator stands (as shown in Annex E) inside the arena, with the counting of votes in the background, but only for three minutes.

- - - - -

/PRESS CENTRE...

PRESS CENTRE

For the convenience of the media, a press centre will be set up inside the Queen Elizabeth Stadium in Gymnasium II and half of the adjacent lobby. The press centre will be one floor below the counting centre in the arena. A floor plan of the press centre is at Annex F.

The press centre will come into operation from 7 am on September 26 until all election results are known.

Six separate booths for broadcasting will be provided inside the Gym for use by the four radio channels and the two television stations. Stations requiring additional communications equipment can have them installed after 10 am on September 25. All equipment must be removed before 3 pm on September 27.

Parking spaces inside the Stadium and on the opposite side of Oi Kwan Road have been reserved for outside broadcast vehicles.

A working area with typewriters, result forms, and stationery, will be provided for media representatives both inside the Gym and in the lobby. An area inside the Gym will be screened off as a rest/interview room. Television sets will be installed to enable journalists to watch election-related programmes.

There will be eight wireless telephones inside booths for use by the press.

Refreshments (tea, coffee, soft drinks and sandwiches) will be available throughout the day.

There will be a GIS desk in the press centre for the collection and dissemination of election news and other related stories. All press enquiries on the election should be directed to this GIS desk on that day. Special telephone numbers for the desk are 5-753747, 5-754045, 94850744 and 04850746.

/Display boards...

Display boards will be put up inside the press centre to show the latest voter turn-out for the functional constituencies and the polling results for the two electoral divisions by breakdown of candidates. Similar boards will also be put up in the News Division of GIS Headquarters.

It is expected that a number of senior government officials will visit the press centre on election day and on-the-spot interviews will be arranged. Transport will also be available to take media representatives to cover VIP visits to polling stations etc.

## List of Nominated Candidates for Legislative Council Elections, 1985

## Electoral College Constituencies

(1 seat each)

Constituency	Name of Candidate		Sex	Age	Occupation
	(in English)	(in Chinese)			
New Territories (East)	1 Andrew WONG Wang-fat	黃宏發	M	41	University Lecturer
	2 WAI Hon-leung	韋漢良	M	53	Merchant
	3 PANG Hang-yin	彭鏗然	M	41	Merchant
	4 LIU Ching-leung	廖正亮	M	42	Merchant
	5 Stephen WONG Yuen-cheung	黃源章	M	56	Real Estate Developer
New Territories (South)	1 Richard LAI	雷聲隆	M	39	Merchant
	2 HO Tung-ching	何冬青	M	57	School Principal
	3 LAM Wai-keung	林偉強	M	36	Land Developer
New Territories (West)	1 TANG Siu-tong	鄧兆棠	M	42	Doctor
	2 TSO Shiu-wai	曹紹偉	M	34	Company Director
	3 William MAN For-tai	文伙泰	M	48	Merchant
	4 TAI Chin-wah	戴展華	M	32	Solicitor
	5 Kingsley SIT Ho-yin	薛浩然	M	36	Loss Adjustor
Hong Kong Island (East)	1 LEE Kam-kai (LEE Kwong-lam)	李錦基 (李廣林)	M	48	Merchant
	2 Peggy LAM PEI	林貝聿嘉	F	57	Welfare Administrator
	3 KWAN Lim-ho	關廉豪	M	38	Lawyer
	4 CHUM Ting-pong	覃定邦	M	31	Research Scholar
	5 Albert CHEUNG Chi-piu	張熾標	M	36	Biochemist
	6 LEE Yu-tai	李汝大	M	40	Course Coordinator

Constituency	Name of Candidate		Sex	Age	Occupation
	(in English)	(in Chinese)			
Hong Kong Island (West)	1 LIU Lit-for	廖烈科	M	54	Banker
	2 Anthony NG Sung-man	吳崇文	M	38	Doctor
	3 Keith LAM Hon-keung	林漢強	M	45	Merchant
Kowloon City	1 Peter CHAN Chi-kwan	陳子鈞	M	49	Barrister-at-Law
	2 PAO Ping-wing	浦炳榮	M	38	Community Service & Development Consultant
	3 Daniel TSE Chi-wai	謝志偉	M	50	College President
Kwun Tong	1 CHENG Kwan-suen	鄭君旋	M	36	Merchant
	2 POON Chi-fai	潘志輝	M	33	Executive
	3 LI Wah-ming	李華明	M	30	Social Worker
Sham Shui Po	1 Ambrose CHEUNG Wing-sum	張永森	M	34	Solicitor
	2 CHUNG Pui-lam	鍾沛林	M	44	Solicitor
South Kowloon	1 IP Kwok-chung	葉國忠	M	34	Secretary
	2 Ena YUEN Yin-hung	袁燕紅	F	34	Social Work Supervisor
	3 CHAN Lai-sang	陳藜生	M	34	Social Worker
	4 Jackie CHAN Chai-keung	陳濟強	M	46	Chartered Engineer
Wong Tai Sin	1 Conrad LAM Kui-shing	林鉅成	M	50	General Practitioner (Medical)
	2 LIU Koon-sing	廖官勝	M	53	Real Estate Developer

Constituency	Name of Candidate		Sex	Age	Occupation
	(in English)	(in Chinese)			
Provisional Regional Council (U)	1 LAU Wong-fat	劉皇發	M	48	Merchant
Urban Council	1 Hilton CHEONG-LEEN	張有興	M	63	Company Director
	2 Elsie ELLIOTT TU	杜葉錫恩	F	72	School Teacher & Supervisor

\* (U) = Uncontested

List of Nominated Candidates for Legislative Council Elections, 1985

Functional Constituencies

Constituency	Name of Candidate		Sex	Age	Occupation
	(in English)	(in Chinese)			
Commercial I (1 seat)	1 Anne Cornelis Willem BLAAUW	包偉能	M	63	Managing Director
	2 Thomas CLYDESDALE	格士德	M	51	Professional Accountant
Commercial II (1 seat) (U)	1 HO Sai-chu	何世柱	M	48	Merchant
Industrial I (1 seat) (U)	1 Stephen CHEONG Kam-chuen	張鑑泉	M	44	Company Director
Industrial II (1 seat)	1 NGAI Shiu-kit	倪少傑	M	60	Merchant
	2 HO Yuk-wing	何煜榮	M	53	Designer
Financial (1 seat) (U)	1 David LI Kwok-po	李國寶	M	46	Chartered Accountant/ Banker
Labour (2 seats) (U)	1 PANG Chun-hoi	彭震海	M	64	Retired Textile Employee
	2 TAM Yiu-chung	譚耀宗	M	36	Trade Union Officer
Social Services (1 seat)	1 Maria Joyce CHANG Sau-han	陳秀嫻	F	43	Social Worker
	2 HUI Yin-fat	許賢發	M	49	Social Worker
	3 MAK Hoi-wah	麥海華	M	34	Social Worker
Medical (1 seat)	1 Edward LEONG Che-hung	梁智鴻	M	46	Medical Practitioner
	2 CHIU Hin-kwong	招顯光	M	57	Medical Practitioner

\* (U) = Uncontested

Constituency	Name of Candidate		Sex	Age	Occupation
	(in English)	(in Chinese)			
Teaching (1 seat)	1 CHAN Yat-tung	陳一東	M	47	Headmaster
	2 SZETO Wah	司徒華	M	54	Headmaster
	3 KO Gra-yee	高家裕	M	45	School Principal
	4 Luke YIP Jing-ping	葉敬平	M	50	School Principal
	5 WU Siu-wai	胡少偉	M	25	Teacher
Legal (1 seat)	1 Martin LEE Chu-ming	李柱銘	M	47	Queen's Counsel
	2 Edmund CHOW Wai-hung	鄒偉雄	M	60	Solicitor
	3 Henry Dennis LITTON	烈顯倫	M	51	Queen's Counsel
Engineering, Architectural, Surveying and Planning (1 seat)	1 CHENG Hon-kwan	鄭漢鈞	M	58	Consulting Engineer
	2 TAO Liang-te	道良德	M	61	Partner with a Consulting Engineering Firm
	3 Raymond HO Chung-tai	何鍾泰	M	46	Civil and Structural Engineer

ANNEX B

<u>Constituency</u>	<u>No. of Elected seats</u>	<u>No. of Candidates</u>	<u>No. of Polling Stations</u>	<u>Hours of Poll</u>
<b>A. <u>Electoral</u></b>				
<b><u>College</u></b>				
<b><u>Constituency</u></b>				
Urban Council	1	2	1	3 pm - 3.30 pm for the first poll
Hong Kong Island (East)	1	6	1	} 10 am - 10.30 am for the first poll. If it should be necessary for any subsequent polls to be taken, these will be of like duration and commence 45 minutes after the declaration of the results of the immediate preceding poll.
Hong Kong Island (West)	1	3	1	
Kwun Tong	1	3	1	
Wong Tai Sin	1	2	1	
Kowloon City	1	3	1	
Sham Shui Po	1	2	1	
South Kowloon	1	4	1	
New Territories (East)	1	5	1	
New Territories (West)	1	5	1	
New Territories (South)	1	3	1	
<b>B. <u>Functional</u></b>				
<b><u>Constituency</u></b>				
Commercial I	1	2	2	} 9 am - 7 pm
Industrial II	1	2	2	
Social Services	1	3	1	
Medical	1	2	4	} 9 am - 9 pm
Teaching	1	5	21	
Legal	1	3	1	
Engineering, Architectural, Surveying and Planning	1	3	2	
	<u>18</u>	<u>58</u>	<u>44</u>	

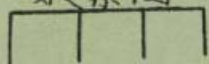
Set-up of Polling/Counting Stations for  
DB Electoral College Constituencies for  
LegCo Elections 1985

一九八五年立法局選舉  
區議會選舉團組別投票/點票站位置圖  
Beard marking candidates' votes  
候選人獲票紀錄板

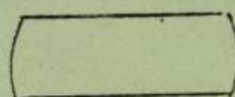
Part A  
Polling  
Station

第一部份  
投票站

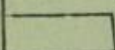
Polling Booths  
投票間



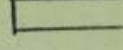
ARO RO ARO PO



Screen 屏幕



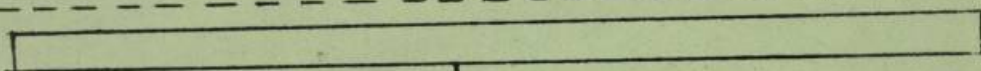
屏幕 Screen



exit  
出口



Screen 屏幕



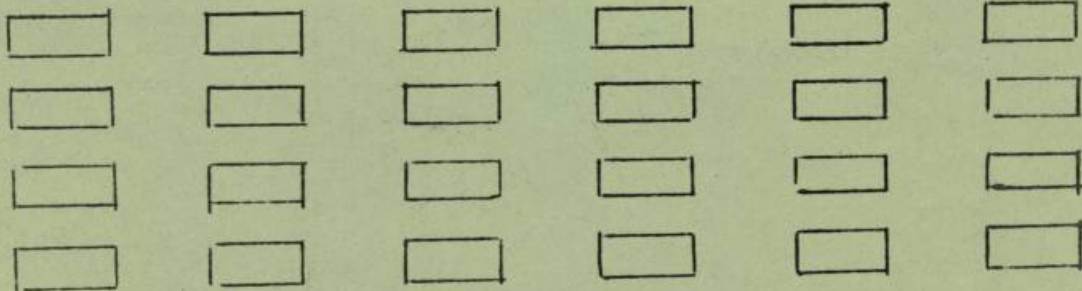
entrance  
入口



Boundary  
Polling/  
counting  
station  
投票/點票  
界綫

Part B  
Waiting  
Area

第二部份  
輪候處



chairs/  
benches  
長椅

Key: ARO = Assistant Returning Officer 助理選舉主任  
RO = Returning Officer 選舉主任  
PO = Presiding Officer 投票站主任

POLLING AND COUNTING STATIONS  
ELECTORAL COLLEGE CONSTITUENCIES

Names of Electoral College Constituencies	Names and Addresses of places designated as Polling/Counting Stations
Urban Council	The Urban Council Chamber, 3rd floor, Urban Council Chambers, Edinburgh Place, Central.
Hong Kong Island (East)	Queen's College, 120 Causeway Road, Causeway Bay.
Hong Kong Island (West)	Loke Yew Hall, Hong Kong University, Pok Fu Lam Road.
Kwun Tong	Kwun Tong District Office Conference Room, Kwun Tong District Branch Offices Building, 3rd floor, Tung Yan Street, Kwun Tong.
Wong Tai Sin	Fung Ming Hall, Sik Sik Yuen (Wong Tai Sin Temple), 2 Chak Yuen Village, Wong Tai Sin.
Kowloon City	Kowloon City District Office Conference Room, 1st floor, 141-143 Kau Pui Lung Road, Kowloon City.
Sham Shui Po	Cheung Sha Wan Community Centre, 55 Fat Cheung Street, Cheung Sha Wan.
South Kowloon	Henry G. Leong Yau Ma Tei Community Centre Conference Room, Room 503, 60 Public Square Street, Yau Ma Tei.
New Territories (East)	Tai Po Community Centre (Multi-purpose Hall), Heung Sze Wui Street, Tai Po Market, Tai Po.
New Territories (West)	Dance Studio, 3rd floor, Yan Oi Tong Community and Indoor Sports Centre, Yan Ching Circuit, Tuen Mun.
New Territories (South)	City and New Territories Administration Headquarters Conference Room, 12th floor, World Shipping Centre, 7 Canton Road, Tsim Sha Tsui.

POLLING STATIONS  
FUNCTIONAL CONSTITUENCIES

Names of Functional Constituencies and Electoral Divisions	Names and Addresses of places designated as Polling Stations
Commercial I	The Hong Kong General Chamber of Commerce (Tsim Sha Tsui Office), Room 1226, Ocean Centre, Tsim Sha Tsui.
	Boardroom, The Hong Kong General Chamber of Commerce, 22nd floor, United Centre, Queensway.
Industrial II	Room 604, Hong Kong & Shanghai Bank Building, 673 Nathan Road, Mong Kok.
	Conference Hall, The Chinese Manufacturers' Association of Hong Kong, 27th floor, CMA Building, 64-66 Connaught Road Central.
Social Services	Lady Trench Auditorium, The Hong Kong Council of Social Services, 1st floor, Duke of Windsor Social Service Building, 15 Hennessy Road, Wan Chai.
Medical	Entrance Lobby, 2nd floor, Main Block, Prince of Wales Hospital, 30-32 Ngan Shing Street, Sha Tin.
	Main Hall, The Hong Kong Medical Association, 5th floor, Duke of Windsor Social Service Building, 15 Hennessy Road, Wan Chai.
	Conference Room (next to Accident & Emergency Department Building), Queen Mary Hospital, 102 Pok Fu Lam Road.
	Doctors' Recreation Room (at rear dining hall, Queen Elizabeth Hospital Staff Canteen), Ground floor, Block B, Queen Elizabeth Hospital, 30 Gascoigne Road.

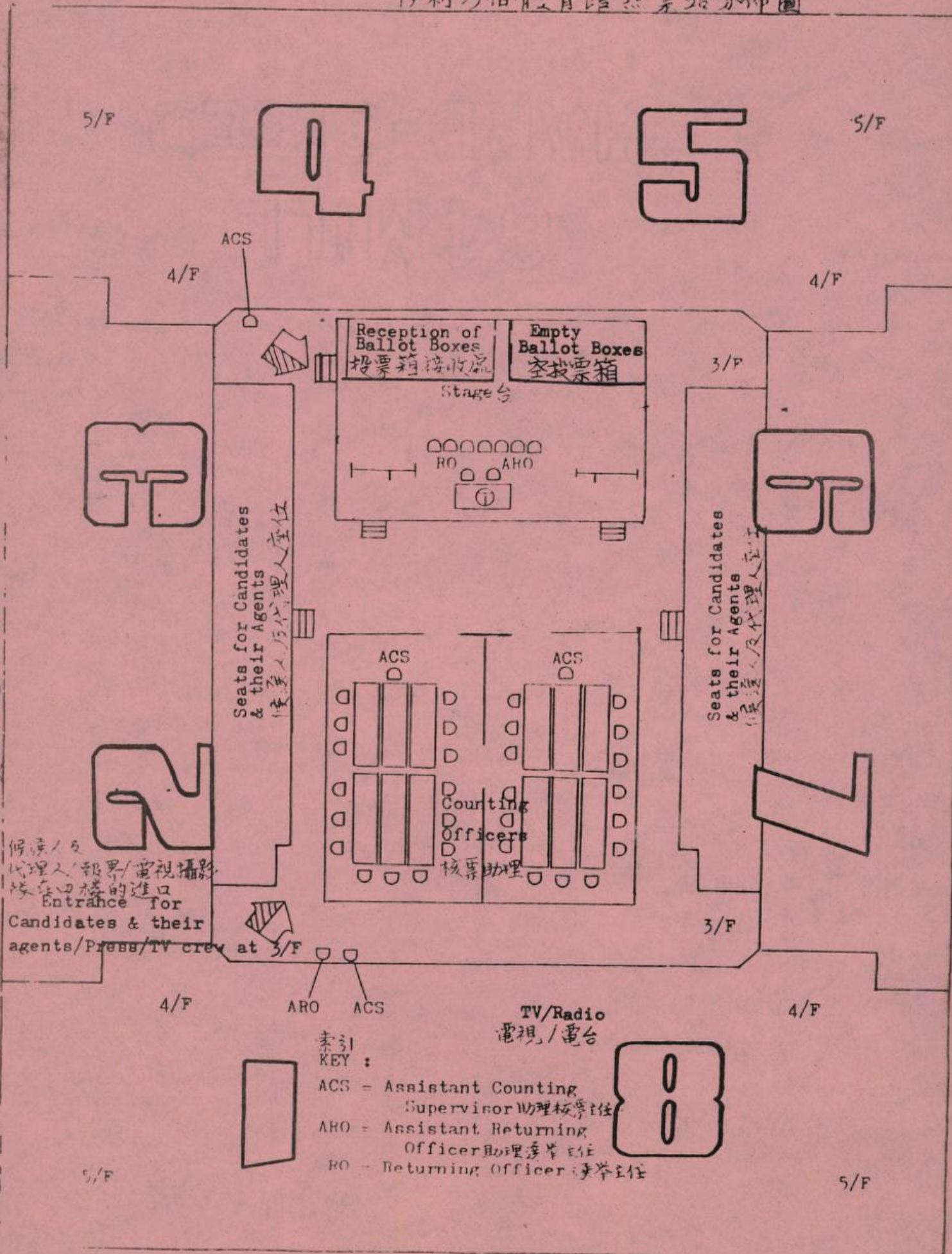
Names of Functional Constituencies and Electoral Divisions	Names and Addresses of places designated as Polling Stations
Teaching	Islands District Office Conference Room, 20th floor, Harbour Building, 38 Pier Road, Central.
	Cheung Wah Community Hall, Cheung Wah Estate, Fanling.
	Cheng Chek Chee Secondary School of Sai Kung & Hang Hau District, N.T., Lot 9 in DD 231, Chuk Kok, Hiram's Highway, Sai Kung.
	Baptist Lui Ming Choi Secondary School, Lek Yuen Estate, Sha Tin.
	Wong Shiu Chi Middle School, Tai Po Market, Tai Po.
	Tsuen Wan Government Secondary School, 70 Hoi Pa Street, Tsuen Wan.
	St. Simon's Lui Ming Choi Secondary Technical School, 85 Tuen Mun Heung Sze Wui Road, Tuen Mun.
	N.T. Heung Yee Kuk Yuen Long District Secondary School, 123 Kau Yuk Road, Yuen Long.
	Kiangsu-Chekiang College, Kwai Chung, 83 Hing Shing Road, Kwai Chung.
	King's College, 63A Bonham Road.
	Morrison Hill Technical Institute, 6 Oi Kwan Road, Wan Chai.
	Clementi Middle School, 30 Fortress Hill Road, North Point.
	St. Mark's School, 460 Shau Kei Wan Road, Shau Kei Wan.

Names of Functional Constituencies and Electoral Divisions	Names and Addresses of places designated as Polling Stations
Teaching (Cont'd)	Pui Tak Canossian Primary School, 180 Aberdeen Main Road, Aberdeen.
	Pui Ching Middle School, 80 Waterloo Road, Homantin.
	Tang King Po School, 16 Tin Kwong Road, To Kwa Wan.
	Kwun Tong Lutheran School, 2 Horse Shoe Lane, Kwun Tong.
	Hong Kong Playground Association Queen Elizabeth II Youth Centre, 10 Yim Po Fong Street, Mong Kok.
	Tack Ching Girls' Middle School, 101 Castle Peak Road, Sham Shui Po.
	Lok Sin Tong Wong Chung Ming Secondary School, 161 Lok Sin Road, Kowloon City.
	Assembly Hall, The Scout Association of Hong Kong, Ground floor, Morse House, 9 Cox's Road.
Legal	Conference Room, The Law Society of Hong Kong, Room 1229, Swire House, 9-25 Chater Road, Central.
Engineering, Architectural, Surveying and Planning	Lecture Hall, Hong Kong Museum of History, Block 61 and 62, Kowloon Park, Tsim Sha Tsui.
	Treasury Central Collection Office, Central Government Offices, West Wing, 11 Ice House Street, 2nd floor, (Side entrance to the Building in Ice House Street)

Layout Plan of  
Queen Elizabeth Stadium Counting Station  
伊利沙伯體育館點票站分佈圖

附錄 E  
Annex E

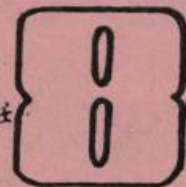
18 01 Kwan Road  
灣仔道十八號



候選人及  
代理人、報界/電視攝影  
隊在四樓的進口  
Entrance for  
Candidates & their  
agents/Press/TV crew at 3/F



- 索引  
KEY :
- ACS = Assistant Counting Supervisor 助理點票主任
  - ARO = Assistant Returning Officer 助理選舉主任
  - RO = Returning Officer 選舉主任



TV/Radio  
電視/電台

- Key:
- (T) Telephones 電話
  - (W) Wireless Telephones 無線電話
  - (X) Xerox Machine 影印機
  - (Fax R/T) Fax receiver and transmitter 傳真接收及發送機
  - (TP) Teleprinter Receiver 電訊接收機

