

TABLE 1 ESTABLISHMENT OF THE MEDICAL & HEALTH DEPARTMENT AS AT 31.3.1983 (Cont'd)

Grade	Zone	Headquarters & Health/Miscellaneous Services	Kowloon Hospital	Prince of Wales Hospital	Princess Margaret Hospital	Queen Elizabeth Hospital	Queen Mary Hospital	Medical Services	Mental Health Service	Total	Strength on 31.3.83
*Telephone Operator		2	5		7	8	7	18	11	58	59
Chief Treasury Accountant/Senior Treasury Accountant/ Treasury Accountant/Accounting Officer I/ Accounting Officer II		14								14	13
*Minor Staff		963	436	20	880	1324	873	1330	1088	6914	6811
	Total	3795+4@	1046	715+1@	2641	3817	2532	3847+1#	2442	20835+6	20341

@ Supernumerary posts

1 supernumerary post of consultant created for short leave replacement upto and including 13.9.83

* Excluding (490) supernumerary posts held against other posts

** Excluding 1 supernumerary post of Foreman created for short leave replacement upto and including 30.4.83

TABLE 2
ORGANISATION OF MEDICAL & HEALTH DEPARTMENT - POSITION AS AT 31.3.83

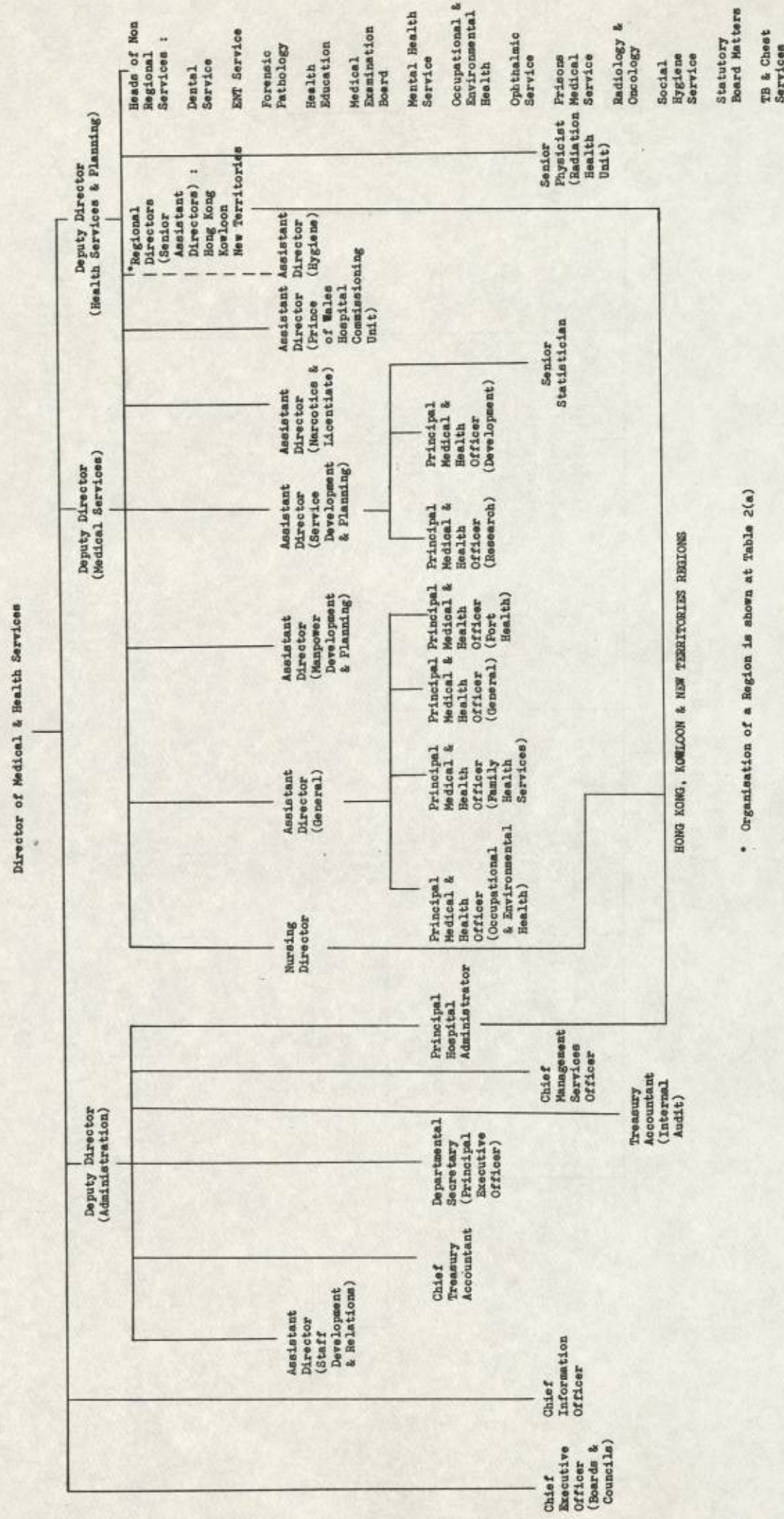


TABLE 4 LEGISLATION OF MEDICAL AND HEALTH IMPORTANCE
APRIL 1982 to MARCH 1983

ORDINANCE

Dangerous Drugs (Amendment) Ordinance 1982
 Dangerous Drugs (Amendment)(No. 2) Ordinance 1982
 Medical Registration (Amendment) Ordinance 1982
 Offences against the Person (Amendment) Ordinance 1982
 Smoking (Public Health) Ordinance 1982
 Pneumoconiosis (Compensation)(Amendment) Ordinance 1983

RULES AND REGULATIONS

Dangerous Drugs (Amendment)(No. 2) Ordinance 1982, No. 48 of 1982 :-
 Dangerous Drugs (Amendment)(No. 2) Ordinance 1982 (Commencement) Notice 1982

Medical Registration Ordinance, Chapter 161 :-
 Medical Practitioners (Registration and Disciplinary Procedure)
 (Amendment) Regulations 1982

Public Health (Animals and Birds) Ordinance
 Dairies (Amendment) Regulations 1982
 Regulations of Movement of Dogs Order 1982

Smoking (Public Health) Ordinance 1982, No. 58 of 1982 :-
 Smoking (Public Health) Ordinance 1982 (Commencement) Notice 1982
 Smoking (Public Health) Regulations 1982
 Smoking (Public Health) (Notices) Order 1982

Dogs and Cats Ordinance, Chapter 167 :-
 Dogs and Cats (Fees) (Amendment) Order 1983

Pneumoconiosis (Compensation) Ordinance, Chapter 360 :-
 Pneumoconiosis (Compensation) (Assessment of Levy) (Amendment)
 Regulations 1983
 Resolution amending the First Schedule

Pneumoconiosis (Compensation) (Amendment) Ordinance 1983, No. 1 of 1983 :-
 Pneumoconiosis (Compensation) (Amendment) Ordinance 1983
 (Commencement) Notice 1983

Public Health (Animals and Birds) Ordinance, Chapter 139 :-
 Regulation of Movement of Dogs Order 1983

Smoking (Public Health) Ordinance 1982, No. 58 of 1982 :-
 Smoking (Public Health) (Notices) (Amendment) Order 1983

TABLE 5 WORK OF STATUTORY COUNCILS - APRIL 1982 TO MARCH 1983

WORK	COUNCIL		MEDICAL		DENTAL			
	Local List	Overseas List	Local List	Overseas List	Dentists		Dental Hygienists	
					Local List	Overseas List		
Number on the Register on 31.3.1983	3724	529	807	103	51			
Number of applications for registration	300 159	33	173	29	12			
Number of Registrations	300 *65	33	75	29	12			
Number of Examinations held	*1 *1 - *1	- - - -	- - 75 2	- - - -	- - - -	- - - -		
Number of Candidates examined	*464 *102 - *64	- - - -	- - 138 40	- - - -	- - - -	- - - -		
Number of successful Candidates	*54 *59 - *54	- - - -	- - 26 37	- - - -	- - - -	- - - -		
Disciplinary Hearings held	2 2	- -	1 1	- -	- -	- -		
Number of removals from Register	68	37	14	92				

Number of Meetings held : Medical Council - 3
 Dental Council - 2
 Licentiate Committee & its Sub-Committees - 12

* Licentiate Scheme for unregistrable doctors

TABLE 6 WORK OF STATUTORY BOARDS - APRIL 1982 TO MARCH 1983

BOARD WORK	Nursing						Midwives	Pharmacy & Poisons
	Registered			Enrolled				
	General	Mental	Mentally Sub-normal	General	Mental			
Number on the Register on 31/3/1983	11918	513	4	3917	277	7595	441	
Number of applications for registration	516	50	-	707	33	312	64	
Number of registrations granted	514	50	-	277	33	312	40	
Number of examinations held	3	3	-	3	3	4	2	
Number of candidates examined	604	79	-	295	41	271	90	
Number of successful candidates	532	58	-	267	31	271	13	
Disciplinary hearings held	-	-	-	-	-	-	2	
No. of hearings	-	-	-	-	-	-	2	
No. of persons charged	1	-	-	-	-	-	-	
Appeal Hearings held	2	-	-	-	-	-	-	
No. of Appeals	1	-	-	-	-	-	6	
Number of removals from register	-	-	-	-	-	-	4	
Number of restoration to register	-	-	-	-	-	-	-	

Number of Meetings held : Nursing Board - 3
Midwives Board - 4
Pharmacy and Poisons Board - 1
Poisons Committee - 1

TABLE 6(a) SUPPLEMENTARY MEDICAL PROFESSIONS COUNCIL
APRIL 1982 TO MARCH 1983

Number of meetings held :-

Supplementary Medical Professions Council	3
Supplementary Medical Professions Council Working Party	2
Medical Laboratory Technician Board	2
Physiotherapist Board	1
Radiographers Board	4
Occupational Therapist Board	3
Occupational Therapist Board Working Party	1

TABLE 6(b) DETAILS OF LICENCES ISSUED BY THE RADIATION BOARD
APRIL 1982 TO MARCH 1983

	Irradiating Apparatus		Radioactive Substances
	Possess & Operate	Possess	
Total number of Licences remained in force as at 31.3.83	724	29	367
Number of Applications for Licences	120	-	98
Number of Licences granted	136	132	90
Number of Licences cancelled	22	136	58

No. of Meetings held : 6

TABLE 7
ESTIMATED POPULATION BY AGE GROUP AT MID-1982

Age Group	Male	Female	Total
0	45,700	42,700	88,400
1 - 4	172,200	161,500	333,700
5 - 9	215,300	198,300	413,600
10 - 14	225,400	209,600	435,000
15 - 19	280,200	261,400	541,600
20 - 24	317,800	290,300	608,100
25 - 29	280,100	247,500	527,600
30 - 34	241,100	202,300	443,400
35 - 39	156,200	121,600	277,800
40 - 44	141,000	108,700	249,700
45 - 49	147,000	121,400	268,400
50 - 54	142,600	124,400	267,000
55 - 59	117,900	109,600	227,500
60 - 64	95,600	94,400	190,000
65 - 69	71,300	77,900	149,200
70 - 74	43,000	58,800	101,800
75 - 79	21,200	38,900	60,100
80 & over	13,100	36,900	50,000
Total	2,726,700	2,506,200	5,232,900

TABLE 8 VITAL STATISTICS - HONG KONG (Absolute Number)

Year	Population* (1)	Registered# Live Births (2)	Registered# Deaths (3)	Late Foetal Deaths (Still Births) (4)	Early@ Neo. Deaths (5)	Late@ Neo. Deaths (6)	Post@ Neo. Deaths (7)	Peri-@ Natal Deaths (8)=(4)+(5)	Neo.@ Natal Deaths (9)= (5)+(6)	Infant# Deaths (10)=(5)+ (6)+(7)	Maternal Deaths (11)
1956	2,614,600	96,746	19,295	988	1,303	1,039	3,553	2,291	2,342	5,895	88
1957	2,736,300	97,834	19,365	1,245	1,323	1,007	3,106	2,568	2,330	5,436	105
1958	2,854,100	106,624	20,554	1,297	1,413	1,079	3,294	2,710	2,492	5,786	92
1959	2,967,400	104,579	20,250	1,393	1,335	888	2,831	2,728	2,223	5,054	77
1960	3,075,300	110,667	19,146	1,680	1,309	1,003	2,279	2,989	2,312	4,591	55
1961	3,168,100	108,726(110,884)	18,738(19,325)	1,683	1,226	1,054	1,818	2,909	2,280	4,098	50
1962	3,305,200	111,905(112,503)	20,324(20,933)	1,560	1,260	1,109	1,761	2,820	2,369	4,130	54
1963	3,420,900	115,263(114,550)	19,748(20,340)	1,633	1,206	972	1,623	2,839	2,178	3,801	34
1964	3,504,600	108,519(107,625)	18,113(18,657)	1,485	1,115	684	1,071	2,600	1,799	2,870	42
1965	3,597,900	102,195(101,110)	17,621(18,150)	1,363	1,017	537	871	2,380	1,554	2,425	34
1966	3,629,900	92,476(91,832)	18,700(19,261)	1,246	1,011	407	882	2,257	1,418	2,300	40
1967	3,722,800	88,171(88,215)	19,644(20,234)	999	958	440	862	1,957	1,398	2,260	27
1968	3,802,700	82,992(82,685)	19,319(19,444)	832	843	404	664	1,675	1,247	1,911	12
1969	3,863,900	79,329(82,482)	18,730(19,256)	757	810	373	548	1,567	1,183	1,731	12
1970	3,959,000	77,465(79,132)	20,763(19,996)	726	734	252	535	1,460	986	1,521	15
1971	4,045,300	76,818(79,789)	20,253(20,374)	656	716	254	440	1,372	970	1,410(1,415)	11
1972	4,115,700	79,053(80,344)	21,145(21,397)	736	740	174	466	1,476	914	1,380(1,396)	16
1973	4,212,600	80,147(82,252)	21,360(21,251)	681	724	157	464	1,405	881	1,345(1,351)	8
1974	4,319,600	81,879(83,581)	22,050(21,879)	621	717	184	520	1,338	901	1,421(1,407)	13
1975	4,395,800	78,200(79,790)	21,191(21,597)	565	671	133	369	1,236	804	1,173(1,192)	2
1976	4,443,800	76,342(78,486)	23,195(22,692)	521	564	127	401	1,085	691	1,092(1,077)	14
1977	4,509,800	78,807(80,022)	23,459(23,346)	528	565	140	388	1,093	705	1,093(1,081)	13
1978	4,597,000	79,173(80,957)	22,843(23,830)	431	539	115	280	970	654	934(956)	5
1979	4,878,600	82,157(81,975)	26,179(25,125)	389	570	124	398	959	694	1,092(1,011)	7
1980	5,038,500	85,406(85,290)	25,987(25,008)	483	532	135	341	1,015	667	1,008(956)	4
1981	5,154,100	87,104(86,632)	24,978(24,678)	475	471	104	271	946	575	846(839)	7
1982	5,232,900	86,036(86,160)	25,460(25,262)	438	482	116	255	920	598	853(854)	1

* 1956-1960 based on the 1961 Census, 1961-1970 based on the 1971 Census, 1971-1976 based on the 1976 By-Census, 1977-1980 based on the 1981 Census.

Figures in brackets denote adjusted births and deaths for 1961-1968 and known births and deaths for 1969-1982.

@ Figures adjusted according to computer tabulations for 1976-1982.

TABLE 9 VITAL STATISTICS - HONG KONG (RATE)

Year	Crude* Birth Rate (1)	Crude* Death Rate (2)	Late Foetal Mort. (3)	Early# Neo. Mort. (4)	Late# Neo. Mort. (5)	Post# Neo. Mort. (6)	Peri-# Natal Mort. (7)	Neo-# Natal Mort. (8)=(4)+(5)	Infant* Mort. (9)=(4)+(5)+(6)	Maternal Mort. (10)
1956	37.0	7.4	10.1	13.5	10.7	36.7	23.4	24.2	60.9	0.90
1957	35.8	7.1	12.6	13.5	10.3	31.8	25.9	23.8	55.6	1.06
1958	37.4	7.2	12.0	13.3	10.1	30.9	25.1	23.4	54.3	0.85
1959	35.2	6.8	13.1	12.8	8.5	27.1	25.7	21.3	48.3	0.73
1960	36.0	6.2	15.0	11.8	9.1	20.6	26.6	20.9	41.5	0.49
1961	34.3 (35.0)	5.9 (6.1)	15.2	11.3	9.7	16.7	26.3	21.0	37.7	0.45
1962	33.9 (34.0)	6.1 (6.3)	13.7	11.3	9.9	15.7	24.9	21.2	36.9	0.48
1963	33.7 (33.5)	5.8 (6.0)	14.0	10.5	8.4	14.1	24.3	18.9	33.0	0.29
1964	31.0 (30.7)	5.2 (5.3)	13.5	10.3	6.3	9.9	23.6	16.6	26.4	0.38
1965	28.4 (28.1)	4.9 (5.0)	13.2	10.0	5.3	8.5	23.0	15.2	23.7	0.33
1966	25.5 (25.3)	5.2 (5.3)	13.3	10.9	4.4	9.5	24.1	15.3	24.9	0.43
1967	23.7 (23.7)	5.3 (5.4)	11.2	10.9	5.0	9.8	21.9	15.9	25.6	0.30
1968	21.8 (21.7)	5.1 (5.1)	9.9	10.2	4.9	8.0	20.0	15.0	23.0	0.14
1969	20.5 (21.3)	4.8 (5.0)	9.5	10.2	4.7	6.9	19.6	14.9	21.8	0.15
1970	19.6 (20.0)	5.2 (5.1)	9.3	9.5	3.3	6.9	18.7	12.7	19.6	0.19
1971	19.0 (19.7)	5.0 (5.0)	8.5	9.3	3.3	5.7	17.7	12.6	18.4 (17.7)	0.14
1972	19.2 (19.5)	5.1 (5.2)	9.2	9.4	2.2	5.9	18.5	11.6	17.5 (17.4)	0.20
1973	19.0 (19.5)	5.1 (5.0)	8.4	9.0	2.0	5.8	17.4	11.0	16.8 (16.4)	0.10
1974	19.0 (19.3)	5.1 (5.1)	7.5	8.8	2.2	6.4	16.2	11.0	17.4 (16.8)	0.16
1975	17.8 (18.2)	4.8 (4.9)	7.2	8.6	1.7	4.7	15.7	10.3	15.0 (14.9)	0.03
1976	17.2 (17.7)	5.2 (5.1)	6.8	7.4	1.7	5.3	14.1	9.1	14.3 (13.7)	0.18
1977	17.5 (17.7)	5.2 (5.2)	6.7	7.2	1.8	4.9	13.8	8.9	13.9 (13.5)	0.16
1978	17.2 (17.6)	5.0 (5.2)	5.4	6.8	1.5	3.5	12.2	8.3	11.8 (11.8)	0.06
1979	16.8 (17.0)	5.4 (5.2)	4.7	6.9	1.5	4.8	11.6	8.4	13.3 (12.3)	0.08
1980	17.0 (17.1)	5.2 (5.0)	5.6	6.2	1.6	4.0	11.8	7.8	11.8 (11.2)	0.05
1981	16.9 (16.9)	4.8 (4.8)	5.4	5.4	1.2	3.1	10.8	6.6	9.7 (9.7)	0.08
1982	16.4 (16.5)	4.9 (4.8)	5.1	5.6	1.3	3.0	10.6	7.0	9.9 (9.9)	0.01

((1) & (2) : per 1,000 population)
 (Rates : (4), (5), (6), (8) & (9) : per 1,000 live births)
 ((3), (7) & (10) : per 1,000 total births)

Figures adjusted according to computer tabulations for 1976-1982.

* Figures in brackets were calculated by using adjusted births & deaths figures for 1961-1968 and known births & deaths for 1969-1982.

TABLE 10 HONG KONG DEATH RATES 1968 TO 1982 (Deaths per 1,000 population)

Rate	Year	1968	1969	1970	1971	1972	1973	1974	1975	1976	1977	1978	1979	1980	1981	1982
Standardised* Death Rate		12.17	11.55	12.04	11.32	11.35	10.65	10.44	9.87	10.68	10.40	9.70	10.12	9.59	8.84	8.58
Crude Death Rate		5.08	4.85	5.24	5.01	5.14	5.07	5.10	4.82	5.22	5.20	4.97	5.37	5.16	4.85	4.87
Age Specific Death Rate																
0		23.59	22.08	19.86	18.65	17.51	16.58	17.33	14.34	14.31	13.78	11.87	13.06	12.06	9.96	9.65
1 - 4		1.21	0.94	1.18	0.95	0.95	1.07	1.10	0.77	0.84	0.78	0.62	1.01	0.69	0.54	0.42
5 - 9		0.49	0.34	0.45	0.41	0.44	0.39	0.39	0.39	0.41	0.32	0.23	0.34	0.29	0.22	0.24
10 - 14		0.45	0.32	0.42	0.36	0.35	0.38	0.36	0.28	0.32	0.33	0.27	0.30	0.29	0.32	0.26
15 - 19		0.72	0.55	0.71	0.59	0.65	0.65	0.54	0.45	0.57	0.46	0.37	0.51	0.47	0.40	0.40
20 - 24		0.92	0.83	1.06	0.87	0.99	0.98	0.95	0.74	0.80	0.73	0.61	0.87	0.81	0.59	0.58
25 - 29		1.28	1.06	1.27	1.26	1.12	1.37	1.18	0.91	1.02	1.01	0.78	1.12	1.00	0.81	0.72
30 - 34		1.60	1.41	1.75	1.54	1.49	1.66	1.73	1.24	1.60	1.17	1.11	1.30	1.25	1.02	0.93
35 - 39		2.17	1.98	2.19	2.08	2.13	2.03	1.81	1.61	1.84	1.87	1.56	1.73	1.65	1.40	1.31
40 - 44		3.58	3.11	3.51	3.28	3.22	3.20	3.08	2.89	2.88	2.80	2.23	2.73	2.39	2.29	2.39
45 - 49		5.00	4.94	5.35	4.73	4.82	4.66	4.59	4.14	4.65	4.32	3.93	4.37	4.11	3.83	3.71
50 - 54		8.33	8.15	8.14	8.07	7.42	7.90	7.35	6.83	7.12	6.48	6.66	6.65	6.23	5.92	6.05
55 - 59		13.07	13.24	14.37	12.67	10.57	11.36	10.98	10.91	10.97	10.79	10.24	10.87	10.72	9.57	9.20
60 - 64		21.42	19.51	20.45	19.40	19.99	19.71	18.70	17.15	18.10	17.94	15.83	16.59	15.32	14.80	15.16
65 - 69		28.69	28.31	30.51	28.64	27.66	26.47	26.55	25.92	28.12	27.80	26.14	26.92	25.47	23.57	22.48
70 - 74		42.56	37.73	42.82	41.67	41.75	38.69	38.69	36.41	39.99	38.18	37.54	38.06	36.01	34.35	34.57
75 - 79		66.95	67.03	66.91	61.65	60.57	53.53	53.54	53.73	61.01	57.98	53.26	56.12	53.69	51.49	48.92
80+		118.07	112.69	110.43	106.41	111.74	104.89	103.62	99.87	106.01	109.82	103.92	105.57	102.22	93.98	90.00

*Basing on population figures for England and Wales 1976 (Reference : United Nations Demographic Year-Book 1977)

TABLE 11 MAJOR CAUSES OF INFANT DEATHS 1961, 1972 AND 1978 TO 1982

Disease Group	Detailed List No. 9th Revision (1975)	1961*	1972#	1978#	1979	1980	1981	1982
Meningitis	320, 322	26	14	15	15	8	8	15
Bronchitis	466, 490-491	6	5	1	5	3	1	3
Pneumonia	480-486	1,166	299	103	137	110	67	53
Gastroenteritis, colitis & other diarrhoeal disease	558, 009	627	70	23	32	14	13	6
Congenital anomalies	740-759	157	284	306	277	249	221	240
Obstetric complications & birth trauma	761-763,767	47	34	36	16	3	6	2
Hypoxia, birth asphyxia & other respiratory conditions	768-770	142	107	172	316	343	276	273
Immaturity	764-765	1,142	349	141	95	50	82	61
Haemolytic disease of fetus or newborn, perinatal jaundice and other causes of perinatal morbidity and mortality	760, 766, 771-779	204	86	91	99	121	83	127
Others	Residues of 001-999	581	132	46	100	107	89	73
All Causes	001-999	4,098	1,380	934	1,092	1,008	846	853
Total Registered Live-births		108,726	79,053	79,173	82,157	85,406	87,104	86,036

* Data regrouped according to ICD 8th Revision (1965)
Data regrouped according to ICD 9th Revision (1975)

TABLE 12 MAJOR CAUSES OF MATERNAL DEATHS 1961, 1972 AND 1978 TO 1982

Detailed list no. according to 9th (1975) Revision	Pregnancy with abortive outcome other than spontaneous or legally induced	Toxaemia of pregnancy	Haemorrhage of pregnancy & childbirth	Major puerperal infection	Ectopic Pregnancy	Total	
						Others	Remainder of 630-676
Year	630-632 636-639	642,643	640, 641 & 666	670	633		
1961*	4	10	17	2	3	14	50
1972#	2	4	4	-	3	3	16
1978#	-	1	1	-	-	3	5
1979	1	-	1	2	3	-	7
1980	-	3	1	-	-	-	4
1981	-	1	3	-	1	2	7
1982	-	-	1	-	-	-	1

* Data regrouped according to ICD 8th Revision (1965)
Data regrouped according to ICD 9th Revision (1975)

TABLE 13 PROPORTIONATE MORTALITY BY DISEASE GROUP, 1961, 1972 AND 1978 TO 1982
(As Percentage of Total Deaths)

Disease Group	Detailed List No. 9th Revision	1961*	1972#	1978#	1979	1980	1981	1982
Infective and parasitic	001 - 139	16.2	6.9	2.8	3.2	3.1	3.1	3.1
Neoplasms	140 - 239	12.3	20.8	26.2	23.7	24.8	26.4	26.8
Endocrine, nutritional, metabolic, immunity disorders and blood	240 - 289	0.9	1.3	1.5	1.6	1.5	1.3	0.9
Nervous system, sense organs and mental disorders	290 - 389	0.8@	0.7	0.8	0.7	0.7	0.7	0.8
Circulatory system	390 - 459	18.2	24.4	31.1	29.3	28.9	28.9	29.3
Respiratory system	460 - 519	16.3	17.2	14.4	15.6	15.3	15.8	15.8
Digestive system	520 - 579	7.7	4.9	4.4	4.0	4.3	4.3	4.6
Genitourinary system	580 - 629	2.0	2.9	3.6	3.5	3.8	3.9	4.1
Pregnancy, childbirth and puerperium	630 - 676	0.3	0.1	+	+	+	+	+
Skin, subcutaneous tissue and musculo-skeletal system	680 - 739	0.2	0.2	0.3	0.2	0.2	0.2	0.2
Congenital anomalies and conditions originating in the perinatal period	740 - 779	8.8	4.4	3.5	3.2	3.1	2.8	2.9
Symptoms, signs and ill-defined conditions	780 - 799	10.4	7.8	6.3	7.1	6.3	4.8	4.2
Injury and poisoning	800 - 999	5.9	8.4	5.1	7.9	8.0	7.8	7.3

@ Excluding Cerebrovascular Disease (formerly Vascular Lesion Affecting Central Nervous System under the Nervous System and Sense Organs) : 7.5% in 1961

Data regrouped according to I.C.D. 9th Revision (1975)

* Data regrouped according to I.C.D. 8th Revision (1965)

+ Denote less than 0.05

TABLE 14 THE TEN LEADING CAUSES OF DEATH BY AGE AND SEX 1982

Rank	Cause of Death	Detailed List No. 9th Revision	Sex	All ages	Age Group						
					0	1-4	5-14	15-44	45-64	65+	Unknown
	All causes	001-999	M F X T	14,252 11,193 15 25,460	454 395 4 853	97 80 - 177	128 83 - 211	1,574 743 - 2,317	5,124 2,450 - 7,574	6,858 7,436 - 14,294	17 6 11 34
1	Malignant neoplasms	140-208	M F T	4,214 2,596 6,810	2 4 6	8 10 18	29 16 45	425 232 657	2,057 957 3,014	1,692 1,377 3,069	1 - 1
2	Heart diseases, including hypertensive heart disease	390-429	M F T	2,201 1,903 4,104	- - -	2 1 3	1 4 5	95 48 143	699 376 1,075	1,403 1,474 2,877	1 - 1
3	Cerebrovascular disease	430-438	M F T	1,522 1,671 3,193	- - -	- 1 1	- 3 3	44 43 87	510 355 865	966 1,269 2,235	2 - 2
4	Pneumonia, all forms	480-486	M F T	995 1,011 2,006	25 28 53	13 14 27	9 7 16	55 19 74	277 90 367	614 853 1,467	2 - 2
5	Injury and poisoning	800-999	M F T	1,205 644 1,849	9 6 15	35 21 56	49 25 74	636 220 856	294 154 448	177 213 390	5 5 10
6	Nephritis, nephrotic syndrome and nephrosis	580-589	M F T	447 450 897	- - -	- - -	- 4 4	55 43 98	168 125 293	224 278 502	- - -

TABLE 14 THE TEN LEADING CAUSES OF DEATH BY AGE AND SEX 1982 (Cont'd)

Rank	Cause of Death	Detailed List No. 9th Revision	Sex	Age Group							
				All ages	0	1-4	5-14	15-44	45-64	65+	Unknown
7	Bronchitis, chronic and unspecified, emphysema & asthma	490-493	M	358	1	1	4	17	134	200	1
			F	218	-	-	1	15	50	152	-
			T	576	1	1	5	32	184	352	1
8	Certain conditions originating in the perinatal period	760-779	M	250	250	-	-	-	-	-	-
			F	213	213	-	-	-	-	-	-
			T	463	463	-	-	-	-	-	-
9	Tuberculosis (including late effects of tuberculosis)	010-018, 137	M	348	-	-	-	25	159	164	-
			F	106	-	1	1	13	28	63	-
			T	454	-	1	1	38	187	227	-
10	Chronic liver diseases and cirrhosis	571	M	278	1	-	-	38	171	68	-
			F	91	-	-	-	2	36	53	-
			T	369	1	-	-	40	207	121	-
	Congenital anomalies	740-759	M	149	130	10	4	4	1	-	-
			F	120	106	10	1	3	-	-	-
			X	4	4	-	-	-	-	-	-
			T	273	240	20	5	7	1	-	-
	Diabetes mellitus	250	M	79	-	-	-	3	23	53	-
			F	124	-	-	-	-	30	94	-
			T	203	-	-	-	3	53	147	-
	All other causes	Residue of 001-999	M	2206	36	28	32	177	631	1297	5
			F	2046	38	22	21	105	249	1610	1
			X	11	-	-	-	-	-	-	11
			T	4263	74	50	53	282	880	2907	17

Note : X indicates unknown sex

TABLE 14(a) SUPPLEMENTARY CLASSIFICATION OF EXTERNAL CAUSES OF INJURY AND POISONING 1982

External Cause of Death	Detailed List No. 9th Revision	Sex	Age Group							
			All ages	0	1-4	5-14	15-44	45-64	65+	Unknown
All accidents, poisonings and violence	E800-E999	M	1207	9	35	49	637	295	177	5
		F	644	6	21	25	220	154	213	5
		T	1851	15	56	74	857	449	390	10
Transport accidents	E800-E848	M	322	-	2	17	161	78	64	-
		F	180	1	-	11	42	54	72	-
		T	502	1	2	28	203	132	136	-
Accidental poisonings	E850-E869	M	47	-	-	-	31	12	4	-
		F	12	-	-	1	11	-	-	-
		T	59	-	-	1	42	12	4	-
Other accidents, misadventures & adverse effect	E870-E949	M	358	7	28	28	171	71	49	4
		F	136	4	18	10	29	24	48	3
		T	494	11	46	38	200	95	97	7
Suicide and self-inflicted injury	E950-E959	M	271	-	-	-	147	89	35	-
		F	177	-	-	-	81	40	56	-
		T	448	-	-	-	228	129	91	-
Homicide and injury purposely inflicted by other persons	E960-E969	M	65	2	5	2	40	12	4	-
		F	38	1	3	3	14	8	7	2
		T	103	3	8	5	54	20	11	2
Other violence	E970-E999	M	144	-	-	2	87	33	21	1
		F	101	-	-	-	43	28	30	-
		T	245	-	-	2	130	61	51	1

TABLE 15 LEADING CAUSES OF DEATH 1961, 1972, 1982 (RANKING ACCORDING TO 1982)

Causes of Death	Number of Deaths			Percentage of Deaths from all causes			Rate per 100,000 population		
	1961*	1972#	1982	1961*	1972#	1982	1961*	1972#	1982
<u>All ages</u>									
All causes	18,738	21,145	25,460	100.0	100.0	100.0	591.5	513.8	486.5
1. Malignant neoplasms	2,280	4,370	6,810	12.2	20.7	26.7	72.0	106.2	130.1
2. Heart diseases, including hypertensive heart disease	1,866	3,038	4,104	9.9	14.4	16.1	58.9	73.8	78.4
3. Cerebrovascular disease	1,401	1,892	3,193	7.5	8.9	12.5	44.2	46.0	61.0
4. Pneumonia, all forms	2,665	2,359	2,006	14.2	11.2	7.9	84.1	57.3	38.3
5. Injury and poisoning	1,100	1,765	1,849	5.9	8.3	7.3	34.7	42.9	35.3
All other causes	9,426	7,721	7,498	50.3	36.5	29.5	297.6	187.6	143.3
<u>0 year</u>									
All causes	4,098	1,380	853	100.0	100.0	100.0	3,840.7	1,751.3	964.9
1. Hypoxia, birth asphyxia & other respiratory conditions	142	107	273	3.4	7.7	32.0	133.1	135.8	308.8
2. Congenital anomalies	157	284	240	3.8	20.6	28.1	147.1	360.4	271.5
3. Haemolytic disease of fetus or newborn, perinatal jaundice & other causes of perinatal morbidity	204	86	127	5.0	6.2	14.9	191.2	109.1	143.7
4. Immaturity	1,142	349	61	27.9	25.3	7.2	1,070.3	442.9	69.0
5. Pneumonia, all forms	1,166	299	53	28.5	21.7	6.2	1,092.8	379.4	60.0
All other causes	1,287	255	99	31.4	18.5	11.6	1,206.2	323.6	112.0

TABLE 15 (Cont'd)

Causes of Death	Number of Deaths			Percentage of Deaths from all causes			Rate per 100,000 population		
	1961*	1972#	1982	1961*	1972#	1982	1961*	1972#	1982
<u>1-4 years</u>									
All causes	1,805	302	177	100.0	100.0	100.0	427.5	94.9	53.0
1. Injury and poisoning	107	104	56	5.9	34.4	31.6	25.3	32.7	16.8
2. Pneumonia, all forms	603	90	27	33.4	29.8	15.3	142.8	28.3	8.1
3. Diseases of nervous system	18	15	26	1.0	5.0	14.7	4.3	4.7	7.8
4. Congenital anomalies	14	32	20	0.8	10.6	11.3	3.3	10.1	6.0
5. Malignant neoplasms	18	22	18	1.0	7.3	10.2	4.3	6.9	5.4
All other causes	1,045	39	30	57.9	12.9	16.9	247.5	12.2	9.0
<u>5-14 years</u>									
All causes	587	410	211	100.0	100.0	100.0	77.7	39.6	24.9
1. Injury and poisoning	177	172	74	30.2	42.0	35.1	23.4	16.6	8.7
2. Malignant neoplasms	40	53	45	6.8	12.9	21.3	5.3	5.1	5.3
3. Diseases of nervous system	29	16	28	4.9	3.9	13.3	3.8	1.5	3.3
4. Pneumonia, all forms	83	52	16	14.1	12.7	7.6	11.0	5.0	1.9
5. Congenital anomalies	7	19	5	1.2	4.6	2.3	0.9	1.8	0.6
All other causes	251	98	43	42.8	23.9	20.4	33.2	9.5	5.1

TABLE 15 (Cont'd)

Causes of Death	Number of Deaths			Percentage of Deaths from all causes			Rate per 100,000 population		
	1961*	1972#	1982	1961*	1972#	1982	1961*	1972#	1982
<u>15-44 years</u>									
All causes	2,665	2,587	2,317	100.0	100.0	100.0	201.6	146.2	87.5
1. Injury and poisoning	465	733	856	17.5	28.3	37.0	35.2	41.4	32.3
2. Malignant neoplasms	512	649	657	19.2	25.1	28.4	38.7	36.7	24.8
3. Heart diseases, including hypertensive heart disease	246	202	143	9.2	7.8	6.1	18.6	11.4	5.4
4. Nephritis, nephrotic syndrome and nephrosis	75	96	98	2.8	3.7	4.2	5.7	5.4	3.7
5. Cerebrovascular Disease	74	91	87	2.8	3.5	3.8	5.6	5.1	3.3
All other causes	1,293	816	476	48.5	31.6	20.5	97.8	46.1	18.0
<u>45-64 years</u>									
All causes	5,041	7,144	7,574	100.0	100.0	100.0	1,089.9	992.9	794.8
1. Malignant neoplasms	1,204	2,250	3,014	23.9	31.5	39.8	260.3	312.7	316.3
2. Heart diseases, including hypertensive heart disease	762	1,048	1,075	15.1	14.7	14.2	164.8	145.7	112.8
3. Cerebrovascular disease	569	656	865	11.3	9.2	11.4	123.0	91.2	90.8
4. Injury and poisoning	216	484	448	4.3	6.8	5.9	46.7	67.3	47.0
5. Pneumonia, all forms	278	544	367	5.5	7.6	4.9	60.1	75.6	38.5
All other causes	2,012	2,162	1,805	39.9	30.2	23.8	435.0	300.5	189.4

TABLE 15 (Cont'd)

Causes of Death	Number of Deaths			Percentage of Deaths from all causes			Rate per 100,000 population		
	1961*	1972#	1982	1961*	1972#	1982	1961*	1972#	1982
<u>65 years and over</u>									
All causes	4,524	9,269	14,294	100.0	100.0	100.0	4,519.5	4,790.2	3,958.5
1. Malignant neoplasms	503	1,392	3,069	11.1	15.0	21.5	502.5	719.4	849.9
2. Heart diseases, including hypertensive heart disease	817	1,767	2,877	18.1	19.1	20.1	816.2	913.2	796.7
3. Cerebrovascular disease	747	1,127	2,235	16.5	12.2	15.6	746.3	582.4	618.9
4. Pneumonia, all forms	435	1,208	1,467	9.6	13.0	10.3	434.6	624.3	406.3
5. Nephritis, nephrotic syndrome and nephrosis	88	156	502	1.9	1.7	3.5	87.9	80.6	139.0
All other causes	1,934	3,619	4,144	42.8	39.0	29.0	1,932.1	1,870.3	1,147.6

* Data regrouped according to ICD 8th Revision (1965)

Data regrouped according to ICD 9th Revision (1975)

TABLE 16 NUMBER OF CANCER DEATHS BY AGE AND SEX 1982

T-List	Detailed List Number 9th Revision	Cause Group	Sex	All Ages	0-9	10-	20-	30-	35-	40-	45-	50-	55-	60-	65-	70-	75+	Unk.
T080 (part)	147	Malignant neoplasm of nasopharynx	M F	361 121	- -	3 1	11 6	20 9	26 8	48 9	56 17	55 19	45 15	44 11	28 10	15 9	10 7	- -
T090	150	Malignant neoplasm of oesophagus	M F	272 61	- -	- -	1 1	1 1	- -	5 -	25 -	47 3	61 7	41 14	42 10	26 10	23 15	- -
T091	151	Malignant neoplasm of stomach	M F	290 172	- -	- -	5 2	4 3	5 6	9 5	12 5	21 13	43 10	49 24	64 25	41 23	37 56	- -
T093	153	Malignant neoplasm of colon	M F	187 183	- -	1 -	1 2	3 2	6 4	4 5	6 5	11 13	20 14	29 23	30 32	39 29	37 54	- -
T094	154	Malignant neoplasm of rectum, sigmoid junction and anus	M F	107 108	- -	1 1	4 4	3 3	3 3	5 3	3 9	11 6	12 11	21 12	13 11	12 13	19 32	- -
T095	155	Malignant neoplasm of liver and intrahepatic bile ducts	M F	689 198	- 1	1 4	7 4	16 4	23 2	57 5	72 17	115 20	105 12	104 21	77 34	61 35	51 39	- -
T096	157	Malignant neoplasm of pancreas	M F	111 81	- -	- -	1 -	1 1	1 -	2 1	4 4	14 7	12 4	22 11	16 14	19 14	19 25	- -
T100	161	Malignant neoplasm of larynx	M F	85 11	- -	- -	- -	- -	- -	2 -	2 -	8 1	14 1	16 2	17 5	17 1	9 1	- -
T101	162	Malignant neoplasm of trachea, bronchus and lung	M F	1263 699	- 1	- -	1 5	5 5	11 6	23 13	65 29	134 35	180 65	236 119	241 129	186 105	181 187	- -

TABLE 16 (Cont'd)

T-List	Detailed List Number 9th Revision	Cause Group	Sex	All Ages	0-9	10-	20-	30-	35-	40-	45-	50-	55-	60-	65-	70-	75+	Unk.
T110	170	Malignant neoplasm of bone and articular cartilage	M F	32 11	- -	3 -	4 1	- -	- -	- -	4 1	5 1	5 -	3 1	3 4	2 1	3 2	- -
T112	172	Malignant melanoma of skin	M F	8 2	- -	- -	- -	- -	- -	- -	- -	1 -	1 -	3 1	- -	2 -	1 1	- -
T113	173	Other malignant neoplasm of skin	M F	4 5	- -	- -	- -	- -	- -	- 1	- -	- -	- -	1 -	1 -	2 -	- 4	- -
T114	174	Malignant neoplasm of female breast	F	202	-	-	2	4	9	8	17	22	25	28	25	23	39	-
T120	180	Malignant neoplasm of cervix uteri	F	108	-	-	1	3	3	4	8	13	23	17	15	11	10	-
T122	179, 182	Malignant neoplasm of uterus, other and unspecified	F	35	-	-	-	1	1	2	-	4	8	7	7	1	4	-
T123	183	Malignant neoplasm of ovary and other uterine adnexa	F	77	-	-	1	3	4	5	9	8	9	16	11	7	4	-
T124	185	Malignant neoplasm of prostate	M	53	-	-	1	-	1	-	-	3	6	7	7	13	15	-
T125	186	Malignant neoplasm of testis	M	5	1	-	-	-	-	-	1	1	-	1	1	-	-	-

TABLE 16 (Cont'd)

T-List	Detailed List Number 9th Revision	Cause Group	Sex	All Ages	0-9	10-19	20-29	30-39	35-39	40-44	45-49	50-54	55-59	60-64	65-69	70-74	75+	Unk.
T126	188	Malignant neoplasm of bladder	M	83	-	-	-	-	1	-	1	7	5	15	17	10	27	-
T131 (part)	193	Malignant neoplasm of thyroid gland	F	40	-	-	-	-	-	1	-	1	-	5	4	9	20	-
T140	201	Hodgkin's disease	M	6	-	-	-	1	2	-	1	-	-	1	-	1	-	-
T141 (part)	200, 202	Non-Hodgkin's lymphoma	F	4	-	-	-	-	-	1	-	-	1	-	1	-	-	-
T141 (part)	203	Multiple myeloma and immunoproliferative neoplasms	M	86	2	5	8	1	2	2	3	7	10	15	12	8	11	-
T142	204-208	Leukaemia	F	66	1	1	8	2	2	2	4	2	4	6	12	9	13	-
	140-146, 148-149, 152, 156, 158-160, 163-165, 171, 175, 181, 184, 187, 189-192, 194-199		M	14	-	-	-	-	-	-	1	4	1	2	3	2	1	-
	140-208	All forms of cancer	F	8	-	-	-	-	-	-	-	1	1	1	2	1	2	-
			M	89	10	12	13	6	3	4	4	6	7	7	3	7	7	-
			F	67	7	9	3	2	3	3	4	4	5	5	5	9	8	-
			M	466	10	12	15	7	6	11	33	42	55	71	84	61	58	1
			F	325	10	4	6	1	3	7	13	18	36	44	48	45	90	-
T080-T142			T	6810	46	58	118	112	144	248	436	684	833	1061	1063	882	1124	1
			M	4214	24	38	72	68	90	172	293	493	582	689	659	524	509	1
			F	2596	22	20	46	44	54	76	143	191	251	372	404	358	615	-
				6810	46	58	118	112	144	248	436	684	833	1061	1063	882	1124	1

TABLE 17 MAIN CAUSES OF DEATH FROM CANCER IN HONG KONG 1973 TO 1982

CAUSE OF DEATH Detailed List Number 9th Revision	1973#		1974#		1975#		1976#		1977#		1978#		1979		1980		1981		1982	
	D	R	D	R	D	R	D	R	D	R	D	R	D	R	D	R	D	R	D	R
ALL FORMS OF CANCER (140-208)	2686	125.2	2788	126.8	3022	134.6	3188	140.2	3396	147.2	3597	152.9	3774	149.6	4001	152.3	4025	149.4	4214	154.5
	1853	89.7	1895	89.3	2083	96.9	2180	100.5	2256	102.4	2381	106.1	2429	103.1	2429	100.7	2561	104.1	2596	103.6
Malignant neoplasm of nasopharynx (147)	318	14.8	304	13.8	339	15.1	334	14.7	325	14.1	302	12.8	360	14.3	349	13.3	360	13.4	361	13.2
	110	5.3	132	6.2	120	5.6	102	4.7	110	5.0	120	5.3	126	5.3	118	4.9	109	4.4	121	4.8
Malignant neoplasm of oesophagus (150)	179	8.3	189	8.6	182	8.1	222	9.8	200	8.7	227	9.6	264	10.5	287	10.9	265	9.8	272	10.0
	53	2.6	45	2.1	63	2.9	75	3.5	67	3.0	64	2.9	66	2.8	61	2.5	54	2.2	61	2.4
Malignant neoplasm of stomach (151)	231	10.8	256	11.6	248	11.0	279	12.3	281	12.2	274	11.6	286	11.3	295	11.2	278	10.3	290	10.6
	170	8.2	162	7.6	158	7.3	156	7.2	161	7.3	177	7.9	167	7.1	167	6.9	188	7.6	172	6.9
Malignant neoplasm of colon (153)	103	4.8	121	5.5	121	5.4	130	5.7	136	5.9	150	6.4	136	5.4	147	5.6	171	6.3	187	6.9
	119	5.8	121	5.7	127	5.9	136	6.3	114	5.2	143	6.4	154	6.5	161	6.7	163	6.6	183	7.3
Malignant neoplasm of rectum, rectosigmoid junction and anus (154)	71	3.3	66	3.0	84	3.7	75	3.3	87	3.8	124	5.3	118	4.7	103	3.9	127	4.7	107	3.9
	42	2.0	60	2.8	54	2.5	73	3.4	76	3.5	81	3.6	107	4.5	93	3.9	84	3.4	108	4.3
Malignant neoplasm of liver and intrahepatic bile ducts (155)	566	26.4	570	25.9	606	27.0	508	22.3	380	16.5	650	27.6	691	27.4	689	26.2	731	27.1	689	25.3
	171	8.3	165	7.8	169	7.9	150	6.9	125	5.7	195	8.7	178	7.6	204	8.5	201	8.2	198	7.9
Malignant neoplasm of trachea, bronchus and lung (162)	634	29.5	676	30.7	758	33.8	803	35.3	919	39.8	999	42.5	1062	42.1	1223	46.6	1200	44.6	1263	46.3
	394	19.1	397	18.7	474	22.0	532	24.5	529	24.0	582	25.0	600	25.5	583	24.2	626	25.4	699	27.9
Malignant neoplasm of breast (174 & 175)	3	0.1	1	*	1	*	3	0.1	2	0.1	-	-	1	*	1	*	-	-	2	0.1
	189	9.1	169	8.0	193	9.0	193	8.9	195	8.9	210	9.4	205	8.7	190	7.9	227	9.2	202	8.1
Malignant neoplasm of cervix uteri (180)	153	7.4	153	7.2	145	6.7	141	6.5	180	8.2	124	5.5	146	6.2	141	5.8	155	6.3	108	4.3

Data regrouped according to ICD 9th Revision (1975). Mortality Rate per 100,000 population.

* Denote less than 0.05.

TABLE 18 NEW CASES OF CANCER NOTIFIED TO THE CANCER REGISTRY BY AGE AND SEX 1980

T-List	Detailed List Number 9th Revision	Cause Group	Sex	All Ages	0-9	10-	20-	30-	35-	40-	45-	50-	55-	60-	65-	70-	75+	Unk.
T080 (part)	147	Malignant neoplasm of nasopharynx	M F	717 245	- -	7 4	33 15	63 20	70 18	110 33	111 25	109 33	85 28	58 21	36 19	17 17	17 10	1 2
T090	150	Malignant neoplasm of oesophagus	M F	421 93	- -	- -	1 1	2 1	- -	5 -	24 2	67 3	89 13	84 15	63 15	49 19	34 24	4 -
T091	151	Malignant neoplasm of stomach	M F	397 201	- -	- -	8 6	4 5	7 8	18 6	21 7	40 19	50 21	79 17	79 34	51 35	39 43	1 -
T093	153	Malignant neoplasm of colon	M F	343 324	- -	1 -	5 8	15 10	9 8	11 5	31 15	38 26	35 37	50 37	49 43	36 39	62 96	1 -
T094	154	Malignant neoplasm of rectum, rectosigmoid junction and anus	M F	208 234	1 -	- 2	4 1	8 6	8 5	12 10	19 19	21 17	23 16	27 26	28 43	26 29	29 57	2 3
T095	155	Malignant neoplasm of liver and intrahepatic bile ducts	M F	704 155	4 1	1 1	12 11	24 1	28 5	58 4	71 13	110 10	112 12	91 19	89 21	61 25	39 32	4 -
T096	157	Malignant neoplasm of pancreas	M F	65 58	- -	- 1	1 -	1 -	2 -	2 1	5 3	4 6	13 7	10 8	6 9	10 10	9 13	2 -
T100	161	Malignant neoplasm of larynx	M F	199 27	- -	- -	- -	- -	2 -	6 -	7 2	21 1	38 1	50 4	32 5	23 12	19 2	1 -
T101	162	Malignant neoplasm of trachea, bronchus and lung	M F	1180 526	- -	1 -	10 8	10 3	8 7	32 14	70 15	140 45	179 65	233 78	224 79	149 74	119 135	5 3

TABLE 18 (Cont'd)

T-List	Detailed List Number 9th Revision	Cause Group	Sex	All Ages	0-9	10-	20-	30-	35-	40-	45-	50-	55-	60-	65-	70-	75+	Unk.
T110	170	Malignant neoplasm of bone and articular cartilage	M F	28 17	- -	11 3	4 2	1 -	1 -	2 -	1 2	2 3	2 -	1 3	1 1	2 1	- 2	- -
T112	172	Malignant melanoma of skin	M F	15 11	- -	- 1	- 1	1 -	- -	3 -	2 -	2 1	2 -	2 1	- 1	1 5	2 -	- 1
T113	173	Other malignant neoplasm of skin	M F	86 103	- -	1 -	3 -	4 3	3 2	5 4	9 4	11 5	5 15	9 16	10 11	14 6	8 36	4 1
T114	174	Malignant neoplasm of female breast	F	638	-	2	9	26	25	49	75	87	67	81	81	58	73	5
T120	180	Malignant neoplasm of cervix uteri	F	534	1	-	14	28	39	44	48	76	89	73	42	37	39	4
T122	179, 182	Malignant neoplasm of uterus, other and unspecified	F	161	-	-	2	1	3	10	20	34	29	22	12	12	15	1
T123	183	Malignant neoplasm of ovary and other uterine adnexa	F	102	-	2	8	3	6	6	9	18	17	9	11	6	6	1
T124	185	Malignant neoplasm of prostate	M	117	-	2	-	-	-	1	1	6	6	20	19	36	26	1
T125	186	Malignant neoplasm of testis	M	27	7	1	6	3	6	1	2	1	-	-	-	-	-	-

TABLE 18 (Cont'd)

T-List	Detailed List Number 9th Revision	Cause Group	Sex	All Ages	0-9	10-	20-	30-	35-	40-	45-	50-	55-	60-	65-	70-	75+	Unk.
T126	188	Malignant neoplasm of bladder	M	316	-	4	4	2	1	3	7	26	40	66	57	58	47	5
T131 (part)	193	Malignant neoplasm of thyroid gland	F	118	-	-	-	-	2	2	-	4	13	17	21	26	28	4
T140	201	Hodgkin's disease	M	33	-	4	4	1	1	1	7	4	4	3	5	-	3	-
T141 (part)	200, 202	Non-Hodgkin's lymphoma	F	120	1	2	20	13	3	4	12	16	11	12	7	5	13	1
T141 (part)	203	Multiple myeloma and immunoproliferative neoplasms	M	17	1	1	2	3	-	-	3	2	3	-	1	-	1	-
T142	204-208	Leukaemia	F	8	-	1	2	1	-	-	-	-	-	1	-	3	-	-
	140-146, 148-149, 152, 156, 158-160, 163-165, 171, 175, 181, 184, 187, 189-192, 194-199		M	157	9	6	13	13	6	11	16	16	12	23	15	6	9	2
	140-208	All forms of cancer	F	97	3	5	11	5	-	4	7	11	14	12	7	7	8	3
			M	22	-	-	-	-	-	-	2	2	4	6	5	3	-	-
			F	23	-	-	-	-	-	-	1	-	-	1	6	3	11	-
			M	137	23	23	21	3	6	9	8	5	10	11	8	4	6	-
			F	86	13	14	6	4	4	10	4	2	5	7	8	4	4	1
T080-T142			M	6060	61	69	160	179	177	344	477	736	832	949	855	643	542	36
			F	4514	34	47	145	142	142	239	324	469	531	574	559	516	752	40
			T	10574	95	116	305	321	319	583	801	1205	1363	1523	1414	1159	1294	76

TABLE 19 NEW OVERSEAS CASES OF CANCER DIAGNOSED IN HONG KONG 1980

T-List	Detailed List Number 9th Revision	Cause Group	Sex	All Ages	0-9	10-	20-	30-	35-	40-	45-	50-	55-	60-	65-	70-	75+
T080 (part)	147	Malignant neoplasm of nasopharynx	M	27	-	1	1	3	4	5	4	3	2	2	3	-	-
T093	153	Malignant neoplasm of colon	F	5	-	-	-	1	1	-	-	1	-	1	-	-	1
T094	154	Malignant neoplasm of rectum, sigmoid junction and anus	M	1	-	-	-	-	-	-	-	-	1	-	-	-	-
T101	162	Malignant neoplasm of trachea, bronchus and lung	F	1	-	-	-	-	-	-	1	-	-	-	-	-	-
T114	174	Malignant neoplasm of female breast	M	2	-	-	-	-	-	-	-	-	2	-	-	-	-
T120	180	Malignant neoplasm of cervix uteri	F	2	-	-	-	-	-	-	-	-	-	2	-	-	-
T141 (part)	200	Lymphosarcoma and reticulosarcoma	F	3	-	-	-	-	-	-	1	-	-	-	-	-	-
T142 (part)	204	Lymphoid leukaemia	M	1	-	-	-	-	-	-	-	-	-	-	-	-	-
	145, 146, 160, 171, 198	Malignant neoplasm of other and unspecified sites	F	4	-	-	-	1	1	-	-	-	-	-	-	1	-
T080-T142	140-208	All forms of cancer	M	38	1	-	1	4	5	5	5	4	5	2	5	1	-
			F	14	-	1	-	1	1	-	1	3	3	3	-	-	1
			T	52	1	1	1	5	6	5	6	7	8	5	5	1	1

TABLE 20 DEATHS FROM HEART DISEASES BY AGE AND SEX 1982
(including Hypertensive Disease)

T-List No.	Cause (with detailed list no.)	Sex	All Ages	0-	10-	20-	30-	35-	40-	45-	50-	55-	60-	65-	70-	75+	Unk.
T250	ACUTE RHEUMATIC FEVER (390-392)	M F	- -	- -	- -	- -	- -	- -	- -	- -	- -	- -	- -	- -	- -	- -	- -
T251	CHRONIC RHEUMATIC HEART DISEASES (393-398)	M F	88 134	- -	2 2	8 9	1 8	4 -	5 3	6 10	10 10	13 22	11 17	10 21	10 11	8 21	- -
	Diseases of mitral valve (394)	M F	30 44	- -	1 -	1 4	1 2	- -	1 1	3 4	5 1	4 7	3 3	3 6	5 4	3 12	- -
T260	HYPERTENSIVE HEART DISEASES (402, 404)	M F	373 291	- -	- -	- 1	3 1	2 1	8 2	11 8	23 14	36 19	59 18	62 30	75 61	94 136	- -
T261	OTHER HYPERTENSIVE DISEASES (401, 403, 405)	M F	37 43	- -	- -	- -	- -	- -	- -	2 3	3 2	5 3	9 5	5 1	4 7	9 22	- -
T270	ACUTE MYOCARDIAL INFARCTION (410)	M F	642 454	- -	- -	- -	3 2	7 1	9 1	26 8	51 17	62 26	86 50	141 63	116 74	140 212	1 -
T271	OTHER ISCHAEMIC HEART DISEASES (411-414)	M F	582 584	- -	- 1	2 -	1 1	4 -	5 1	6 3	26 10	53 17	68 37	105 59	99 110	213 345	- -
T280	DISEASES OF PULMONARY CIRCULATION (415-417)	M F	372 280	- -	- 1	1 -	2 1	2 -	4 2	8 3	15 7	38 15	48 30	73 45	80 51	101 125	- -
T281	OTHER FORMS OF HEART DISEASES (420-429)	M F	107 117	2 1	2 5	6 7	8 -	5 1	2 1	6 6	4 2	4 7	10 7	15 11	15 12	28 57	- -
T250- T281	ALL FORMS OF HEART DISEASES (390-429)	M F	2201 1903	2 1	4 9	17 17	18 13	24 3	33 10	65 41	132 62	211 109	291 164	411 230	399 326	593 918	1 -

TABLE 21 INFECTIOUS DISEASES NOTIFIED 1978-1982

Diseases	Cases						Deaths					
	1978	1979	1980	1981	1982	1982	1978	1979	1980	1981	1982	
Amoebiasis	12	46	39	48	37	2	1	6	2	-	2	
Bacillary Dysentery	406	429	437	563	550	2	3	1	3	1	1	
Cerebrospinal Meningitis & Meningococcal Infections	4	33	29	18	16	-	7	3	1	1	1	
Chickenpox	912	1052	2176	1140	1621	-	1	1	1	-	3	
Cholera	2	4	-	3*	8#	-	1	-	-	-	-	
Diphtheria	-	-	2	-	1	-	-	-	-	-	1	
Enteric Fever : Typhoid	330	331	468	482	369	2	3	6	2	2	1	
Paratyphoid	39	26	32	18	23	-	-	-	2	2	-	
Food Poisoning : Outbreaks (Persons affected)	204	146	102	175	215	-	-	-	-	-	-	
(543)	74	(587)	(754)	(666)	(870)	-	-	1	-	-	-	
Leprosy	74	70	60	55	57	1	1	-	2	-	1	
Malaria	47	40	49	62	80	-	1	1	-	-	-	
Measles	240	1929	1669	249	1863	1	32	5	-	-	5	
Ophthalmia Neonatorum	4	3	1	5	4	-	-	-	-	-	-	
Polioyelitis	-	-	2	3	-	-	-	-	-	-	-	
Puerperal Fever	-	2	2	2	-	-	2	-	-	-	-	
Rabies (Human)	-	-	2	1	-	-	-	-	2	1	-	
Scarlet Fever	13	12	18	3	4	-	-	-	-	-	-	
Tuberculosis	6623	7907	8065	7729	7527	420	523	551	489	454	454	
Typhus (Scrub)	-	3	5	6	5	-	-	-	-	-	-	
Viral Hepatitis	1230	964	1554	1738	1814	47	44	38	26	42	42	
Whooping Cough	-	-	12	2	1	-	-	-	-	-	-	
Total	10140	12997	14724	12302	14195	475	619	615	527	510		

Remarks : No case of smallpox, plague, epidemic louse-borne typhus, yellow fever or relapsing fever was reported during the specified years.

* Imported cases

Including 5 imported cases

TABLE 22 NOTIFICATION AND DEATH RATES OF CERTAIN INFECTIOUS DISEASES 1978 TO 1982

Diseases	Notification Rate (per 100,000 population)					Death Rate (per million population)				
	1978#	1979#	1980#	1981	1982	1978#	1979#	1980#	1981	1982
	Amoebiasis	0.26	0.94	0.77	0.93	0.71	0.44	0.20	1.19	-
Bacillary Dysentery	8.83	8.79	8.67	10.92	10.51	0.44	0.61	0.20	0.58	0.19
Cerebrospinal Meningitis & Meningococcal Infections	0.09	0.68	0.58	0.35	0.31	-	1.43	0.60	0.19	0.19
Diphtheria	-	-	0.04	-	0.02	-	-	-	-	0.19
Enteric Fever (Typhoid & Paratyphoid)	8.03	7.32	9.92	9.70	7.49	0.44	0.61	1.19	0.78	-
Measles	5.22	39.54	33.12	4.83	35.60	0.22	6.56	0.99	-	0.96
Tuberculosis	144.07	162.08	160.07	149.96	143.84	91.36	107.20	109.36	94.88	86.76
Viral Hepatitis	26.76	19.76	30.84	33.72	34.67	10.22	9.02	7.54	5.04	8.03

Adjusted according to revised population figures based on the 1981 Census.

TABLE 23 PRINCIPAL INFECTIOUS DISEASES NOTIFIED BY AGE AND SEX 1982

Age Group	Tuberculosis		Viral Hepatitis		Enteric Fever		Bacillary Dysentery	
	M	F	M	F	M	F	M	F
0 - 4	39	27	15	19	15	17	53	68
5 - 9	33	20	52	38	11	7	45	37
10 - 14	40	48	103	64	30	21	29	21
15 - 19	359	315	214	127	20	26	20	25
20 - 24	715	511	277	137	47	52	21	21
25 - 29	563	416	197	58	25	26	25	9
30 - 34	382	196	144	48	19	22	12	12
35 - 39	254	106	64	15	6	5	8	2
40 - 44	319	72	44	13	6	4	10	9
45 - 49	348	83	32	13	2	3	13	8
50 - 54	441	97	30	11	4	2	9	7
55 - 59	467	86	22	13	4	4	6	5
60 - 64	440	119	17	9	2	1	8	8
65 - 69	323	101	7	8	2	-	7	4
70 - 74	227	83	5	5	-	3	10	15
75 & over	173	121	2	5	2	4	9	13
Unknown	2	1	3	2	-	-	-	-
Total	5,125	2,402	1,228	585	195	197	285	264
	7,527		1,814(1)		392		550(1)	

Note : Figures in brackets denote unknown sex included.

TABLE 24 MALARIA 1978 TO 1982

Cases Notified

Year	Imported	Local			Total Cases
		Indigenous	Induced	Cryptic	
1978	44	-	3@	-	47
1979	39	-	1#	-	40
1980	45	3	1#	-	49
1981	61	1	-	-	62
1982	77	1	2#	-	80

* Blood transfusion case.

@ Including 2 blood-transfusion cases and one congenital case.

Congenital case.

Identification of Parasites

Year	P. Vivax	P. Falciparum	P. Malariae	Mixed Infection	Species Undetermined
1978	34	5	7	-	1
1979	23	7	8	-	2
1980	30	6	5	1	7
1981	47	7	5	-	3
1982	69	7	3	-	1

TABLE 25 PROPHYLACTIC IMMUNIZATIONS 1978 TO 1982

Immunizations	1978	1979	1980	1981	1982
Smallpox	124,006	75,184	21,686	1,676	1,041
Cholera	86,833	61,793	21,881	7,870	8,053
Diphtheria/Pertussis/Tetanus	219,942	226,249	225,090	251,384	267,477
Diphtheria/Tetanus	109,692	119,375	77,252	102,954	186,054
Typhoid					
1st Dose	14,626	24,600	23,840	25,999	8,258
2nd Dose	3,613	6,374	3,856	3,687	1,168
Booster Dose	43,142	38,781	37,651	40,508	12,663
Tuberculosis (BCG)					
Infant	80,298	82,886	86,305	87,694	86,562
Others	58,149	53,904	47,808	51,208	57,213
Poliomyelitis					
Type I for Newborn	77,063	79,364	82,525	84,094	83,823
1st Dose - Trivalent	73,151	83,749	76,246	80,750	78,844
2nd Dose - Trivalent	71,358	73,843	71,540	76,501	79,586
Booster Dose - Trivalent	65,058	196,970	135,890	131,835	229,322
Measles	64,256	68,061	59,023	65,022	70,919
Rubella*	101,517	40,825	46,336	35,763	28,474

* Anti-rubella vaccination was introduced in September 1978

TABLE 26 TUBERCULOSIS MORTALITY 1961, 1972 AND 1978 TO 1982

Year	Total Deaths from Tuberculosis	Tuberculosis Death Rate per 100,000 Population	Tuberculosis Deaths as percentage of total registered deaths	Average Age at death from Tuberculosis
1961	1907	60.2	10.2	43
1972	1312	31.9	6.2	59
1978	420	9.1	1.8	61
1979	523	10.7	2.0	61
1980	551	10.9	2.1	62
1981	489	9.5	2.0	63
1982	454	8.7	1.8	63

TABLE 27 TUBERCULOSIS IN CHILDHOOD 1961, 1972 AND 1978 TO 1982

Year	Percentage* of newborns receiving BCG	Percentage of Tuberculosis deaths below 5 years	Percentage of Tuberculosis deaths under 1 year	Infantile Mortality from Tuberculosis (per 1,000 births)
1961	77.77	11.48	2.62	0.46
1972	95.08	0.30	0.15	0.02
1978	98.14@	0.48	0.24	0.01
1979	99.58@	0.96	0.19	0.01
1980	99.54@	0.73	0.18	0.01
1981	99.53	0.41	-	-
1982	98.94	0.22	-	-

* Percentage of newborns based on registered birth figures in 1961 and based on known birth figures since 1970

@ Figures adjusted after 1981 Census

TABLE 28 TUBERCULOSIS NOTIFICATIONS 1961, 1972 AND 1978 TO 1982

Year	Government Chest Clinics	Other Government Institutions	Tung Wah Group Hospitals	Other Non-Government Institutions & Private Sources	Total	Notification Rate per 100,000 population
1961	8957	2056	947	624	12584	397.21
1972	5509	599	281	2031	8420	204.58
1978	3897	556	244	1926	6623	144.07
1979	4632	677	281	2317	7907	162.08
1980	5228	584	252	2001	8065	160.07
1981	4936	472	328	1993	7729	149.96
1982	4663	594	314	1956	7527	143.84

TABLE 29 WORK OF TUBERCULOSIS AND CHEST SERVICE 1982

Total attendances	703,343
Total patients attending (old & new)	101,769
Number of new patients	53,825
<u>Classification of new patients</u>	
I) NSD [#] & Unknown	31,521(58.56)
II) Diseases other than tuberculosis	9,257(17.20)
III) Non-respiratory tuberculosis	432(0.80)
a) Meninges	10(0.02)
b) Bones and joints	42(0.08)
c) Others	380(0.71)
IV) Respiratory tuberculosis	
a) Not active and unknown activity	7,053(13.10)
b) Active	5,407(10.05)
i) By bacteriology and extent	
Negative A1	2,206(4.10)
A2	348(0.65)
A3	68(0.13)
Positive B1	1,231(2.29)
B2	911(1.69)
B3	432(0.80)
Incomplete O1	168(0.31)
O2	22(0.04)
O3	21(0.04)
ii) By previous history and treatment	
No previous history of tuberculosis	4,628(8.60)
Previously diagnosed, no treatment	6(0.01)
Previously diagnosed, with treatment	608(1.13)
Previous history not known	165(0.31)
Total with examination completed	53,670(99.71)

Note : Figures in brackets denote percent of total new patients

Nil of significance detected

TABLE 30 EXAMINATION OF NEW CONTACTS OF TUBERCULOSIS PATIENTS 1982

Number of patients listed	7,913	
Number of contacts listed	22,150	
(a) Number of children with negative tuberculin/tine*	1,932	
Number of children given BCG	1,927	
(b) Number of contacts X-rayed	14,586	(100.00%)
Results		
NSD#	13,781	(94.48%)
Disease other than TB	156	(1.07%)
Respiratory TB		
Acting A (negative by bacteriology)	95	(0.65%)
B (positive by bacteriology)	37	(0.25%)
O (incomplete investigation)	8	(0.06%)
Not active	476	(3.26%)
Non-respiratory TB	11	(0.08%)
Result not yet known	22	(0.15%)

Nil of significance detected

* for NT Chest Clinics only

TABLE 31 ANNUAL ATTENDANCES AND TREND OF VENEREAL DISEASES 1973 TO 1982

ATTENDANCES	1973	1974	1975	1976	1977	1978	1979	1980	1981	1982
NEW ATTENDANCES										
Syphilis	1,327	1,567	1,439	1,134	1,101	1,244	1,130	1,092	970	830
Non-congenital	118	68	66	179	79	83	37	102	109	94
Primary	34	19	28	17	12	17	14	36	37	20
Secondary	272	459	537	276	250	258	282	239	188	130
Early Latent	769	926	724	582	678	783	706	663	588	553
Late Latent	70	43	40	38	27	9	15	18	13	12
All Others	4	5	3	13	20	27	22	6	-	-
Congenital	60	47	41	29	35	67	54	28	35	21
Under 1 year	6,727	5,267	4,372	3,279	2,115	2,052	2,761	2,629	3,362	4,546
Over 1 year	1,495*	1,285*	845*	1,095*	909*	847*	974*	960*	1,492	2,091
Gonorrhoea	243	143	157	113	197	234	163	357	439	310
Non-specific Genital Infection	80	71	54	33	36	48	36	76	75	31
Chancroid	-	-	-	-	-	-	-	267	268	414
Lymphogranuloma Venereum	-	-	-	-	-	-	-	456	673	971
Herpes Genitalis+	-	-	-	-	-	-	-	66	42	86
Genital Warts+	-	-	-	-	-	-	-	-	-	229
Pediculosis Pubis+	-	-	-	-	-	-	-	-	-	-
Scabies#	-	-	-	-	-	-	-	-	-	-
Others (unclassified)	1,725	1,697	1,128	961	660	176	324	399	280	298
ALL VENEREAL DISEASES	11,597	10,030	7,995	6,615	5,018	4,601	5,388	6,302	7,601	9,806
NON-VENEREAL DISEASES	5,174	7,062	7,709	6,693	5,906	5,316	4,900	6,250	6,643	6,820
SKIN DISEASES	15,774	16,545	20,807	16,438	15,982	16,907	16,392	15,470	14,964	16,960
NEW ATTENDANCES (ALL TYPES)	32,545	33,637	36,511	29,746	26,906	26,824	26,680	28,022	29,208	33,586
TOTAL ATTENDANCES (ALL TYPES)	172,332	169,742	178,277	154,871	139,711	138,858	142,691	144,641	150,852	166,933

* Male cases only, female cases classified under non-veneral diseases

+ Formerly classified as skin diseases

Formerly classified as skin diseases; partly classified as venereal diseases w.e.f. 1982

TABLE 32 VDRL EXAMINATIONS IN EXPECTANT MOTHERS 1978 TO 1982

Examinations	1978*	1979*	1980*	1981*	1982
Venous Blood	66,790	68,966	71,482	85,837	90,092
Positive	385	363	417	294	285
% Positive	0.58	0.53	0.58	0.34	0.32

* Excluding examinations done in AHML Nethersole Hospital, Caritas Medical Centre, Our Lady of Maryknoll Hospital, United Christian Hospital, Pok Oi Hospital and Yan Chai Hospital

TABLE 33 LEPROSY CASES 1973 TO 1982

I) Incidence of Leprosy

Year	New Cases		Imported Cases	New Cases Admitted to	
	No.#	Incidence Rate* per 100,000 population		Hei Ling Chau Leprosarium	Lai Chi Kok Hospital
1973	100	2.4	14	47	-
1974	119	2.8	12	36	-
1975	78	1.8	1	-	27
1976	76	1.7	2	-	34
1977	73	1.6	1	-	24
1978	74	1.6	5	-	23
1979	70	1.4	7	-	20
1980	60	1.2	4	-	18
1981	55	1.1	5	-	10
1982	57	1.1	5	-	14

* Rates for the years 1977 to 1980 based on revised population estimates after 1981 Census.

Including imported cases.

II) Number of New Cases by Age 1982

Age Group	No. of cases
Under 1	-
1 - 4	-
5 - 9	-
10 - 14	1
15 - 19	2
20 - 24	4
25 - 29	6
30 - 34	5
35 - 39	8
40 - 44	4
45 - 49	6
50 - 54	2
55 - 59	7
60 & over	12
Total	57

TABLE 34 ANALYSIS OF DERMATOLOGICAL CONDITIONS PRESENTING AT CLINICS 1982

Dermatological Conditions	Cases	Dermatological Conditions	Cases
Acne	1104	Nevi (all types)	82
Alopecia	300	Pediculosis	9
Angioedema	2	Pemphigus	12
Carcinoma	16	Paronychia	109
Contact dermatitis	768	Pityriasis rosea	165
Dermatitis exfoliative	1	Pityriasis alba	158
Dermatitis herpetiformis	-	Pruritus	443
Dermatomyositis	15	Psoriasis	600
Drug eruption	85	Purpura	1
Eczema (all types)	6756	Pyoderma	106
Epidermolysis bullosa	4	Raynaud's phenomema	-
Erythema multiforme	18	Rosacea	100
Erythema nodosum	2	Scabies	1343
Granulomata	21	Scleroderma	-
Herpes simplex	48	Tinea (all types)	1946
Herpes zoster	140	TB Cutis	64
Ichthyosis	25	Tumors, benign	-
Keloid	61	Ulcer, varicose	17
Keratosis (all types)	54	Urticaria	763
Lichen amyloidosis	58	Vasculitis	-
Lichen planus	23	Verruca	929
Light sensitivity	-	Vitiligo	260
Lupus erythematosus (all types)	35	Xanthoma	5
Miliaria	10	Leprosy	14
Molluscum contagiosum	26	Miscellaneous	1076
Neurodermatitis	797	Total	18571
Neurofibromatosis	-		

TABLE 35 DISTRIBUTION OF FAMILY HEALTH CENTRES AS AT 31ST MARCH 1983

Centre	Hong Kong	Kowloon	NT and Islands	Total
<u>Maternal & Child Health</u>				
Full-time				
with Midwifery Service	1	7	3	11
without Midwifery Service	7	7	4	18
Part-time				
with Midwifery Service	-	-	10	10
without Midwifery Service	1	-	2	3
<u>Family Planning</u>				
Full-time				
	-	2	2	4
Part-time				
	10	13	19	42

TABLE 36 WORK OF FAMILY HEALTH SERVICE 1981 AND 1982

(Maternal and Child Health)

	<u>1981</u>	<u>1982</u>
<u>Number of centres</u>		
Full-time	25	28
Part-time	15*	14
<u>Ante-natal Sessions</u>		
Total Sessions	3,513	4,124
New attendances	38,575	39,928
Total attendances	248,446	258,191
Average attendance per session	70.72	62.61
Average attendance per person	6.44	6.47
<u>Post-natal Sessions</u>		
Total Sessions	1,681	1,756
New attendances	24,404	27,568
Total attendances	24,841	27,815
Percentage presenting with some abnormality	6.65%	6.62%
<u>Infant Welfare Sessions (0-2 years of age)</u>		
Total Sessions	8,101	8,998
New attendances	78,947	79,801
Total attendances	972,407	1,049,283
<u>Toddler Welfare Sessions (2-5 years of age)</u>		
Total Sessions	1,371	1,720
New attendances	40,139	46,191
Total attendances	97,999	123,812
<u>Percentage of new attendances presenting with some abnormality (0-5 years of age)</u>	1.91%	2.29%
<u>Home Visits</u>	92,067	93,900

* Including 1 Temporary Suspended.

TABLE 37 WORK OF FAMILY HEALTH SERVICE 1981 AND 1982

(Comprehensive Observation Service)

	<u>1981</u>	<u>1982</u>
<u>Number of centres</u>		
Full-time	18	21
Part-time	19	20
Number of sessions held	9,976	12,342
Number of children examined	98,648	112,760
Number of new cases	58,631	65,709
Total number of developmental screening tests done	118,791	145,367
Number of children found to have defects/disabilities	1,355	1,197
Number of referrals	1,204	1,526

TABLE 38 WORK OF FAMILY HEALTH SERVICE 1981 AND 1982

(Family Planning)

		<u>1981</u>	<u>1982</u>
Number of centres	Full-time	6	4
	Part-time	36	41
	Total	42	45
Number of sessions provided		7,121	7,695
Number of clients	New	42,208	48,690
	Old	68,013	67,135
	Total	110,221	115,825
Number of attendances		340,611	368,104
Characteristics of new clients			
I. Contraceptive method	Pills	20,189	21,007
	Injections	260	689
	IUD's	450	541
	Condoms	19,776	24,658
	Other methods	1,533	1,795
	Total	42,208	48,690
II. Age	Under 20	1,552	1,530
	20 - 24	12,960	14,027
	25 - 29	17,549	20,667
	30 - 34	7,642	9,256
	35 - 39	1,701	2,314
	40 - 44	606	607
	45 & over	198	289
Total	42,208	48,690	

Note : New clients refer to

- (1) Clients never attend family planning clinics.
- (2) F.P.A. clients first attend our clinics after the date of take-over.
- (3) Return of clients after pregnancy, advised pregnancy, advised sterilization and referred to hospital.
- (4) Return of non-I.U.D. clients whose date of last visit was over 2 years ago and I.U.D. clients whose date of last visit was over 4 years ago.

TABLE 39 WORK OF OCCUPATIONAL HEALTH DIVISION 1981 AND 1982

		<u>1981</u>	<u>1982</u>
I. <u>Number of Occupational Diseases Notified</u>			
Decompression sickness			
	Type I	210	81
	Type II	-	-
	Dysbaric osteonecrosis	4	1
Contact dermatitis			
		15	9
Silicosis			
		446	510
Poisoning by			
	Lead	3	1
	Managanese	1	-
	Nitrous fumes	1	-
	Organic chemicals	1	-
II. <u>Occupational Injuries</u>			
No. of occupational injuries reported		82495	81132
No. of accidents requiring notification under Employees' Compensation Ordinance		69428	71124
III. <u>Employees' Compensation Case Work</u>			
Total no. of interviews		159351	168108
Cases assessed by Occupational Health Officers		376	333
Cases assessed by Medical Assessment Boards		21216	22833

TABLE 40 ENVIRONMENTAL AND BIOLOGICAL MONITORING AND SURVEY WORK OF OCCUPATIONAL HEALTH DIVISION 1982

I. Field Survey Work

<u>Nature of Survey work</u>	<u>No. of surveys</u>	<u>No. of samples taken</u>
(A) Atmospheric monitoring :		
Acetone	5	7
Ammonia	4	6
Asbestos	1	3
Butyl acetate	5	10
Carbon dioxide	7	9
Carbon monoxide	6	10
Chloride	22	29
Chloroform	3	30
Chromic acid mist	68	332
Cyclohexanone	2	8
Dust	117	1023
Ethyl acetate	5	9
Explosive gas	1	1
Formaldehyde	8	17
Free silica	2	4
Freons	2	2
Gasoline	1	2
Hydrocarbon	1	5
Hydrogen chloride	2	4
Hydrogen cyanide	3	4
Hydrogen sulphide	2	3
Isophorone	1	2
Iso-propyl alcohol	2	4
Lead	21	46
Manganese	1	3
Mercury	2	10
Methyl ethyl ketone	8	14
Methylene chloride	1	2
Methylene diphenyl isocyanate	1	2
Nitrogen dioxide	3	6
Oxygen	2	2
Perchloroethylene	41	38
Sulphur dioxide	1	2
Sulphuric acid	1	2
Styrene	8	20
Tetrahydrofuran	2	8
1,1,1-trichloroethane	16	26
Trichloroethylene	50	92
Toluene	40	77
Toluene-, 4-diisocyanate	10	23
Xylene	7	9
(B) Ventilation surveys :		
General ventilation	85	-
Local exhaust	231	-
(C) Thermal surveys	12	-
(D) Noise surveys	15	-
(E) Lighting surveys	8	-
Total	836	1906

TABLE 40 (Cont'd)

II. Laboratory Analysis Work

<u>Nature of analysis work</u>	<u>No. of analyses</u>	<u>No. of samples/ specimens collected</u>
(A) Air-pollution Monitoring Programme :		
Sulphur dioxide	1112	1112
Sulphur trioxide	369	369
Smoke	1117	1117
PH measurements	24)
Total water insoluble matter	24)
Carbon disulphide soluble matter	24)
Ash	24) 24
Total water soluble matter	24)
Calcium	24)
Chloride	24)
Sulphate	24)
(B) Chemical analysis :		
Aluminium	(5)	-
Asbestos	(14)	(14)
Beryllium	(1)	(1)
Cadmium	(4)	(2)
Calcium	(26)	(26)
Chloroform	(2)	(2)
Combustible content	(1)	(1)
Hippuric acid	(25)	(25)
Iron	(14)	(4)
Lead	1 (71)	1 (71)
Manganese	(1)	-
Metallic Composition	(3)	(3)
Mixed solvents (esters, ketones, hydrocarbons, etc.)	(33)	(33)
Pseudo-cholinesterase	(9)	(9)
Silica	30 (26)	27 (16)
Silver	(1)	(1)
Sulphuric acid	2	2
Trichloroethylene	(1)	(1)
Toluene	(26)	(26)
Toluene diisocyanate	(13)	(13)
(C) Urinalysis :		
Glucose	615)
Protein	615) 615
Fluoride	152	152
Coproporphyrin	14	14
Total	4219 (276)	3433 (248)

Note : Figures in brackets were analyses/samples being referred to the Government Laboratory for chemical analysis.

TABLE 41 WORK OF PORT HEALTH SERVICE 1981 AND 1982

	1981	1982
Number of ships inspected	3,516	3,515
Number of ships fumigated	-	-
Number of deratting exemption certificates issued	377	469
Number of radio pratique granted	7,177	7,488
Number of medical assistance and advice given	92	83
Vaccinations done		
smallpox	1,654	1,040
cholera	6,939	6,578
yellow fever	2,171	1,643
plague	1	16
typhus	5	9
typhoid	1,914	994

TABLE 42 NUMBER OF HOSPITAL BEDS IN HONG KONG AS AT 31st DECEMBER 1982

Classification of beds	Internal Medicine	Surgery	Orthopaedics	Gynaecology	Obstetrics/ Maternity	Paediatrics & Babies	Mentally-ill	Mentally Handicapped	Tuberculosis & Chest Diseases	Other Infectious Diseases	Geriatrics	Rehabilitation & Chronic	Other Specialties	Radiotherapy & Cancer	Casualty, Observation & Custodian	Unclassified	Total
I. Government Institutions	353	329	147	107	64	133	15	-	-	-	-	-	43	18	20	68	1297
Queen Mary Hospital	-	10	-	-	-	-	-	-	-	-	-	-	9	-	-	61	80
Tang Shiu Kin Hospital	-	-	-	-	246	50	-	-	-	-	-	-	-	-	-	-	296
Tsan Yuk Hospital	-	-	-	-	-	-	-	-	-	-	-	-	-	-	-	-	-
Kowloon Hospital	100	264	305	34	-	42	147	-	106	-	-	-	23	-	-	8	1029
Lai Chi Kok Hospital	-	-	-	-	-	-	324	-	-	60	-	-	-	-	-	-	384
Queen Elizabeth Hosp. (British Military Hosp.)	381	406	176	94	265	315	-	-	-	-	-	-	63	97	28	113	1938
Castle Peak Hospital	38	9	-	5	5	10	3	-	-	-	-	-	10	-	-	-	80
Fanling Hospital	46	10	16	-	-	6	1927	-	-	-	20	-	-	-	-	-	1927
Kwai Chung Hospital	-	-	-	-	-	-	984	-	-	-	-	-	-	-	-	-	98
Princess Margaret Hosp.	236	268	164	36	90	180	-	-	172	-	74	-	4	-	8	70	984
Siu Lam Hospital	-	-	-	-	-	-	-	200	-	-	-	-	-	-	-	-	1302
South Lantau Hospital	6	-	-	-	4	3	-	-	-	-	-	-	-	-	-	2	200
St. John Hospital	62	-	-	-	6	2	-	-	-	-	19	-	-	-	1	-	15
5 Prison Hosp./TC (HKI)	-	-	-	-	-	-	-	-	-	-	-	-	-	-	-	-	90
1 Prison Hosp./TC (Kin.)	-	-	-	-	-	-	-	-	-	-	-	-	-	-	-	-	139
11 Prison Hosp./TC (NT)	-	-	-	-	-	-	-	-	-	-	-	-	-	-	-	-	94
1 Maternity Home/ Clinic (HKI)	-	-	-	-	26	-	-	-	-	-	-	-	-	-	-	-	26
7 Maternity Homes/ Clinics (Kin.)	-	-	-	-	164	-	-	-	-	-	-	-	-	-	-	-	164
15 Maternity Homes/ Clinics (NT)	-	-	-	-	240	-	-	-	-	-	-	-	-	-	-	-	253
Total (53 Government Institutions)	1222	1296	808	276	1110	741	3400	200	106	232	113	-	152	115	650	322	10743

TABLE 42 (Cont'd)

Classification of beds	Internal Medicine	Surgery	Orthopaedics	Gynaecology	Obstetrics/Maternity	Paediatrics & Babies	Mentally-ill	Mentally Handicapped	Tuberculosis & Chest Diseases	Other Infectious Diseases	Geriatrics	Rehabilitation & Chronic	Other Specialties	Radiotherapy & Cancer	Casualty, Observation & Custodian	Unclassified	Total
II. Government-Assisted Institutions																	
AHML Metherole Hosp.	74	94	-	60	99	42	-	-	-	-	-	90	-	-	-	16	385
Cheshire Home	-	-	-	-	-	-	-	-	-	-	-	-	-	-	-	-	90
Duchess of Kent Children's Hosp. at Sandy Bay	-	52	148	-	-	-	-	-	-	-	-	-	-	-	-	-	200
Grantham Hospital	80	155	42	-	-	24	-	-	324	-	-	-	-	180	-	-	625
Mae Long Hospital	-	-	-	-	-	-	-	-	-	-	-	-	-	-	-	-	180
Ruttonjee Sanatorium	-	-	-	-	-	-	-	-	390	-	-	-	-	12	-	-	390
Tung Wah Sandy Bay Convallescent Hosp.	144	47	112	8	-	-	-	-	-	-	-	-	-	-	-	-	323
Tung Wah Hospital	488	265	-	-	-	21	-	-	-	-	-	-	26	-	-	7	807
Tung Wah Eastern Hosp.	86	90	10	7	36	-	-	-	-	-	-	-	6	-	-	10	245
Caritas Medical Centre	198	157	102	70	105	88	-	-	-	40	300	-	14	64	-	26	1464
HK Buddhist Hospital	209	64	-	-	-	32	-	-	-	-	-	-	8	-	-	45	358
Kwong Wah Hospital	384	302	106	104	247	218	-	-	-	-	56	-	-	-	10	195	1622
Margaret Trench Medical Rehab. Centre	-	-	-	-	-	-	-	-	-	-	-	80	-	-	-	-	80
Our Lady of Maryknoll Hospital	104	35	-	16	30	56	-	-	-	-	-	-	-	-	-	16	257
United Christian Hosp.	120	134	100	45	47	87	30	-	-	-	40	-	-	-	7	37	647
Wong Tai Sin Infirmary	438	80	137	8	-	-	-	-	172	-	48	-	2	-	-	-	885
Haven of Hope Hospital	41	-	-	-	-	-	-	-	197	-	-	58	-	-	-	-	296
Pok Oi Hospital	81	40	45	-	23	29	-	-	-	-	-	-	-	-	-	-	218
Yan Chai Hospital	15	62	-	10	25	15	-	-	-	-	-	-	-	-	-	23	150
Total (19 Government-Assisted Institutions)	2462	1577	802	328	612	612	30	300	1083	40	444	228	56	256	17	375	9222

TABLE 42 (Cont'd)

Classification of beds	Internal Medicine	Surgery	Orthopaedics	Gynaecology	Obstetrics/Maternity	Paediatrics & Babies	Mentally-ill	Mentally Handicapped	Tuberculosis & Chest Diseases	Other Infectious Diseases	Geriatrics	Rehabilitation & Chronic	Other Specialties	Radiotherapy & Cancer	Casualty, Observation & Custodian	Unclassified	Total
III. Private Institutions																	
Canossa Hospital	60	64	24	14	30	8	-	-	-	-	-	-	-	-	-	-	200
HK Adventist Hospital	31	27	-	-	13	13	-	-	-	-	-	-	-	-	-	6	90
HK Central Hospital	47	45	-	14	3	5	-	-	-	7	-	-	-	-	4	4	129
HK Sanatorium & Hosp. Matilda & War Memorial Hospital	123	144	-	35	65	98	-	-	4	4	48	6	27	5	-	4	563
St. Paul's Hospital	108	97	6	38	64	37	6	-	8	-	6	3	14	3	7	6	403
Baptist Hospital	136	118	-	-	51	61	-	-	-	2	-	-	-	-	-	6	374
Evangel Hospital	18	11	-	3	16	4	-	-	-	-	-	-	-	-	-	-	52
Precious Blood Hosp.	63	57	-	-	45	-	-	-	-	-	-	-	-	-	-	-	165
St. Teresa's Hospital	-	-	-	-	67	36	-	-	-	11	-	-	-	-	-	406	520
HK Adventist Hosp. (TW)	42	-	-	-	23	18	-	-	-	-	-	-	-	-	-	-	83
Nursing & Maternity Home (HKI)	-	-	-	-	-	-	-	-	-	-	-	-	-	-	-	-	-
5 Nursing & Maternity Homes (Kln.)	1	1	-	-	44	-	-	-	-	-	-	25	-	-	-	9	80
Nursing & Maternity Home (NT)	-	-	-	-	-	-	-	-	-	-	-	-	-	-	-	-	-
Total (16 Private Institutions)	629	564	30	104	433	280	6	-	12	24	54	34	41	8	11	495	2725
All Institutions (HKI)	1594	1419	489	283	658	431	21	-	726	11	54	99	125	218	170	236	6534
All Institutions (Kln.)	2190	1638	926	379	1086	949	504	300	278	113	444	105	120	161	139	861	10193
All Institutions (NT)	529	380	225	46	411	253	2911	200	197	172	113	58	4	-	369	95	5963
GRAND TOTAL	4313	3437	1640	708	2155	1633	3436	500	1201	296	611	262	249	379	678	1192	22690

Note : 'Other Specialties' beds include Eye, ENT, Skin & Dental Beds.
 'Unclassified' beds include private wards, intensive care units and staff beds.

TABLE 43 IN-PATIENTS TREATED IN GOVERNMENT, GOVERNMENT-ASSISTED AND PRIVATE INSTITUTIONS 1982

Institutions	In-patients Discharged						Deaths						Total In-patients Treated	
	General	Infectious	Tuberculosis	Maternity	Psychiatric	Health Services for other reasons	Total	General	Infectious	Tuberculosis	Maternity	Psychiatric		Health Services for other reasons
i) GOVERNMENT INSTITUTIONS														
Queen Mary Hospital	77672	575	589	3526	452	-	82814	2254	16	19	-	-	-	2289
Tang Shiu Kin Hospital	5412	11	3	-	2	-	5428	-	-	-	-	-	-	-
Tsan Yuk Hospital	1690	1	-	10445	-	-	12136	26	-	-	-	-	-	26
Kowloon Hospital	16222	37	1283	587	558	-	18687	259	3	42	-	-	-	304
Lai Chi Kok Hospital	-	24	-	-	18	-	42	3	-	-	-	-	-	3
Queen Elizabeth Hospital	144274	3550	972	21420	1237	-	171453	3871	85	67	-	-	-	4024
Castle Peak Hospital	77	-	-	-	2623	-	2700	51	5	1	-	-	-	57
Fanling Hospital	97	1	-	-	1	-	99	105	1	-	-	-	-	106
Kwai Chung Hospital	117	2	1	-	2524	-	2644	7	1	-	-	-	-	8
Princess Margaret Hospital	94449	9944	336	12280	536	-	117545	1892	56	17	-	-	-	1965
Siu Lam Hospital	6	-	-	-	-	-	6	5	-	-	-	-	-	6
South Lantau Hospital	29	1	-	31	-	-	61	-	-	-	-	-	-	12
St. John Hospital	806	8	3	254	6	-	1077	72	-	-	-	-	-	61
Prison Hosp./Treat. Centres (HK Island)	848	104	32	113	2	62	1161	3	-	-	-	-	-	72
Prison Hosp./Treat. Centres (Kowloon)	1637	2	58	-	1864	-	3561	1	-	-	-	-	-	3
Prison Hosp./Treat. Centres (NT)	3654	377	112	106	1338	357	5944	2	-	-	-	-	-	1
Maternity Homes (HK Island)	-	-	-	392	-	-	392	-	-	-	-	-	-	2
Maternity Homes (Kowloon)	-	-	-	10848	-	-	10848	-	-	-	-	-	-	392
Maternity Homes (NT)	-	-	-	12804	-	-	12804	-	-	-	-	-	-	10848
TOTAL GOVERNMENT INSTITUTIONS	346990	14637	3389	72806	11161	419	449402	8551	167	146	1	1	-	8866

TABLE 43 (Cont'd)

Institutions	In-patients Discharged						Deaths						Total In-patients Treated	
	General	Infectious	Tuberculosis	Maternity	Psychiatric	Health Services for other reasons	Total	General	Infectious	Tuberculosis	Maternity	Psychiatric		Health Services for other reasons
ii) GOVERNMENT-ASSISTED INSTITUTIONS														
AHML Nethersole Hospital	11544	228	118	6493	-	-	18383	141	1	3	-	-	-	145
Cheshire Home	38	-	-	-	-	-	38	-	-	-	-	-	-	-
Duchess of Kent Children's Hospital at Sandy Bay	2539	82	40	-	5	-	2666	1	-	-	-	-	-	1
Grantham Hospital	4342	7	850	2	4	-	5205	477	-	32	-	-	-	509
Nam Long Hospital	291	-	-	-	-	-	291	651	-	-	-	-	-	651
Ruttonjee Sanatorium	509	1	971	-	-	174	1655	177	2	22	-	-	-	201
Tung Wah Sandy Bay	2817	13	24	6	13	-	2873	462	3	3	-	-	-	468
Convalescent Hospital	-	-	-	-	-	-	-	-	-	-	-	-	-	-
Tung Wah Hospital	12551	57	98	2	11	-	12719	564	4	-	-	-	-	568
Tung Wah Eastern Hospital	4782	122	14	1715	168	-	6801	238	-	-	-	-	-	238
Caritas Medical Centre	27461	1875	193	5715	289	-	35533	1208	14	6	-	-	-	1228
Hong Kong Buddhist Hospital	6176	34	34	39	60	-	6343	881	2	-	-	-	-	883
Kwong Wah Hospital	45341	513	510	11406	581	-	58351	1843	38	3	-	-	-	1884
Margaret Trench Medical Rehab. Centre	381	11	3	-	-	-	395	-	-	-	-	-	-	-
Our Lady of Maryknoll Hospital	6144	142	59	2559	40	95	9039	238	5	1	-	-	-	244
United Christian Hospital	21412	798	288	4846	353	1235	28932	1035	26	17	-	-	-	1078
Wong Tai Sin Infirmary	762	3	446	1	5	-	1217	553	6	20	-	-	-	579
Haven of Hope Hospital	393	3	647	-	2	-	1045	63	-	49	-	-	-	112
Pok Oi Hospital	7065	126	4	2316	8	-	9519	443	1	2	-	-	-	446
Yan Chai Hospital	4139	11	8	2754	8	-	6920	153	-	-	-	-	-	153
TOTAL GOVERNMENT-ASSISTED INSTITUTIONS	158687	4026	4307	37854	1547	1504	207925	9128	102	158	-	-	-	9388