



DAILY INFORMATION BULLETIN

ISSUED BY GOVERNMENT INFORMATION SERVICES
BEACONSFIELD HOUSE, HONG KONG. TEL: 5-233191

TUESDAY, AUGUST 4, 1987

<u>CONTENTS</u>	<u>PAGE NO.</u>
MEMORIAL FOR SIR EDWARD YOUDE	1
CONCERTED EFFORTS IN CONTROLLING COMMERCIAL CRIME STRESSED .	2
MAY RETAIL SALES SURVEY RESULTS RELEASED	4
SAI KUNG RESIDENTS URGED TO SUPPORT VOTERS REGISTRATION	9
NEW INTERCHANGE FOR TUEN MUN NEW TOWN	10
SITE FORMATION AT SIU SAI WAN	10
UPGRADING OF TING KOK ROAD	11
TAI PO AMBULANCE DEPOT OPENS	12
SURVEY ON GREEN PAPER	12
DISCUSSION ON SOCIAL WELFARE BENEFITS	13
EASTERN DISTRICT BOARD TO MEET	14
YOUTH ORCHESTRA ON UK VISIT	14
TAXI RESTRICTED ZONES IN TSUEN WAN	15
TRAFFIC ARRANGEMENTS IN KOWLOON TONG AND TSUEN WAN	16
DEPOSIT-TAKING COMPANY LICENCE REVOKED	16

MEMORIAL FOR SIR EDWARD YOUDE

* * * * *

A NUMBER OF PROJECTS WILL BE DEVELOPED IN THE NEXT FEW MONTHS IN TRIBUTE TO THE LATE GOVERNOR, SIR EDWARD YOUDE.

THE PROJECTS INCLUDE A PAVILION IN THE NEW TERRITORIES AND A MEMORIAL PLAQUE AT ST JOHN'S CATHEDRAL. AN AVIARY IN CENTRAL WILL ALSO BE NAMED IN MEMORY OF SIR EDWARD, A SPOKESMAN FOR THE CITY AND NEW TERRITORIES ADMINISTRATION SAID TODAY (TUESDAY).

"THE NORTH DISTRICT BOARD ON ITS OWN INITIATIVE DECIDED TO BUILD, WITH DONATIONS FROM ITS MEMBERS, A PAVILION IN THE LUK KENG COUNTRY PARK IN MEMORY OF SIR EDWARD AND TO NAME IT AFTER HIM," THE SPOKESMAN SAID.

"THE MEMBERS REGARDED SIR EDWARD AND LADY YOUDE AS WEEKEND RESIDENTS OF NORTH DISTRICT WHO WERE REGULAR TREKKERS IN THE LUK KENG AREA," HE ADDED.

LADY YOUDE HAD WELCOMED THE PROPOSAL AND DURING HER RECENT VISIT TO HONG KONG, STUDIED THE DESIGN AND INSPECTED THE SITE FOR THE PAVILION.

THE AVIARY TO BE PROVIDED IN A FUTURE PARK ON THE VICTORIA BARRACKS SITE WOULD BE NAMED AFTER SIR EDWARD WHOSE LOVE OF NATURE, PARTICULARLY OF BIRDS, WAS WELL KNOWN, THE SPOKESMAN SAID.

UPON LADY YOUDE'S SUGGESTION, THE RECREATION SELECT COMMITTEE OF THE URBAN COUNCIL HAD AGREED THAT ADMISSION TO THE AVIARY WOULD BE FREE. LADY YOUDE WOULD BE FURTHER CONSULTED ON THE NAME OF THE MEMORIAL AVIARY.

THE ADMINISTRATIVE SERVICE ASSOCIATION HAS RAISED \$28,000 FROM ITS MEMBERS AND OTHER CIVIL SERVICE ASSOCIATIONS FOR THE PLACING OF A MEMORIAL PLAQUE IN ST JOHN'S CATHEDRAL, THE SPOKESMAN SAID.

"LADY YOUDE HAS AGREED TO A SIMPLE SERVICE OF DEDICATION FOR THE PLACING OF THE PLAQUE AND THE OPENING OF THE LUK KENG PAVILION WHEN SHE COMES BACK TO HONG KONG NEXT FEBRUARY," THE SPOKESMAN SAID.

THE SPOKESMAN ADDED THAT THE SIR EDWARD YOUDE MEMORIAL FUND WHICH IS THE PRINCIPAL MEMORIAL TO THE LATE GOVERNOR NOW STOOD AT MORE THAN \$84 MILLION.

- - - - 0 - - - -

CONCERTED EFFORTS IN CONTROLLING COMMERCIAL CRIME STRESSED

* * * * *

THE HONG KONG GOVERNMENT WILL BE SCRUPULOUS IN UPHOLDING HONG KONG'S STANDING AS AN INTERNATIONAL FINANCIAL AND TRADING CENTRE WHICH DEPENDS ON THE REPUTATION OF INDIVIDUAL COMPANIES AND THE MARKETS.

THIS WAS STRESSED TODAY (TUESDAY) BY THE SECRETARY FOR MONETARY AFFAIRS, MR DAVID NENDICK, WHEN HE ADDRESSED THE ECONOMIC CRIME WORKSHOP ORGANISED BY THE CROWN AGENTS OF THE UNITED KINGDOM.

NOTING THAT LEGISLATION COULD ONLY BE PART OF THE ANSWER TO DEAL WITH COMMERCIAL CRIME, MR NENDICK HAS IDENTIFIED FOUR AREAS WHERE ACTION TO BUTTRESS THE GENERAL LEGISLATIVE FRAMEWORK WAS CONSIDERED TO BE IMPORTANT.

THE FIRST AND BASIC BUTTRESS, SAID MR NENDICK, WAS THE PROPER BEHAVIOUR OF THE BOARD OF DIRECTORS OF A COMPANY. HE POINTED OUT THAT TO GUARD AGAINST A COMPANY FROM INVOLVING IN COMMERCIAL CRIMES, IT WOULD BE NECESSARY TO KEEP CONSTANT VIGILANCE OF THE DIRECTORS.

HE COMMENDED THE RECENT ACTION OF THE HONGKONG AND SHANGHAI BANKING CORPORATION IN SETTING UP WHAT WAS, IN EFFECT, AN AUDIT COMMITTEE DRAWN FROM THE MEMBERS OF ITS BOARD OF DIRECTORS ON WHICH NON-EXECUTIVE DIRECTORS WERE IN THE MAJORITY.

"THIS COMMITTEE HAS BEEN GIVEN WIDE RANGING POWERS WITH ACCESS TO INTERNAL PAPERS AND TO THE AUDITORS BOTH INTERNAL AND EXTERNAL. THE HONGKONG BANK, OF COURSE, CHOSE WISELY IN THE FIRST PLACE BY APPOINTING INDEPENDENT MINDED MEN OF INTEGRITY TO ITS BOARD. BUT PUTTING THEM TOGETHER IN THIS SORT OF WAY IS A MAJOR STEP IN ENSURING THE ACCOUNTABILITY OF THE MANAGEMENT OF A COMPANY WHERE, OF NECESSITY, THE EXECUTIVE HAS CONSIDERABLE FINANCIAL SCOPE AND POWER," MR NENDICK SAID.

"SIMILAR STEPS HAVE BEEN TAKEN BY LARGE COMPANIES IN OTHER COUNTRIES TO ENSURE THE ACCOUNTABILITY OF EXECUTIVES AND I COMMEND THIS EXAMPLE TO THE BOARDS OF OTHER LARGE ENTITIES HERE WHO WISH THEIR INVESTORS AND POTENTIAL INVESTORS TO VIEW THEIR COMPANIES IN THE MOST FAVOURABLE LIGHT," MR NENDICK SAID.

THE SECOND VITAL BUTTRESS, ACCORDING TO MR NENDICK, WAS ADEQUATE DISCLOSURE.

"THERE ARE THREE ASPECTS. THE FIRST IS THE FLOW OF COMMERCIAL INFORMATION FROM THE COMPANY TO THE PUBLIC AT THE EARLIEST POSSIBLE MOMENT. THE SECOND IS THE DISCLOSURE OF HOLDINGS OF CONTROLLERS AND DIRECTORS SO THAT THEIR ACTIONS CAN BE APPROPRIATELY JUDGED. THE THIRD IS THE EARLY IDENTIFICATION OF LARGE INVESTORS WHO MAY BECOME TOMORROW'S CONTROLLERS.

/HE NOTED

HE NOTED THAT HONG KONG IN RECENT YEARS HAD MOVED ALONG A PATTERN OF DISCLOSURE FOR THE BENEFIT OF INVESTORS AND DEPOSITORS AND THE GENERAL WELL BEING OF THE COMPANIES CONCERNED.

"IN THE NEW BANKING ORDINANCE, FOR INSTANCE, WE HAVE TAKEN POWERS TO VET THE FITNESS OF CONTROLLERS AND DIRECTORS, SOMETHING WE HAD ALREADY PUT INTO OUR INSURANCE LEGISLATION IN THE CONCEPT OF 'A FIT AND PROPER PERSON'.

"AND WE WENT FURTHER AND REQUIRED ALL NEW INVESTORS TO BE VETTED IF THEIR SHAREHOLDING IN A BANK OR DEPOSIT-TAKING COMPANY REACHES 10 PER CENT OF THE COMPANIES' EQUITY.

"AND WE ARE PRESSING AHEAD GENERALLY WITH MORE CORPORATE DISCLOSURE REQUIREMENTS ON SHAREHOLDINGS AND ON PURCHASES, ON THE LINES OF THOSE WHICH APPLY IN THE UNITED KINGDOM," HE SAID.

THE THIRD BUTTRESS, SAID MR NENDICK, WAS THE ROLE OF AUDITORS. "HERE AGAIN IT IS A QUESTION OF INDIVIDUAL STANDARDS."

HE SAID THAT WHILE THE BOARD OF DIRECTORS MUST BEAR THE PRIME RESPONSIBILITY, SHAREHOLDERS AND ALL THOSE INVOLVED IN THE MARKETS EXPECTED THE PUBLISHED ACCOUNTS TO PRESENT A TRUE AND FAIR VIEW.

"IN ESTABLISHING THIS ESSENTIAL QUALITY IN THE ACCOUNTS, THE AUDITOR MUST HAVE THE HIGHEST STANDARD OF INDEPENDENCE AND MUST FOLLOW THE BEST PRACTICES OF HIS PEER FIRMS. FRAUD IS ADMITTEDLY HARD TO DISCOVER IF PRACTISED CAREFULLY AND MOST DIFFICULT OF ALL IF THE FRAUD IS DIRECTED FROM THE TOP OF A COMPANY.

"I BELIEVE THAT IF THERE IS IN PLACE AN INDEPENDENT AND RIGOROUS FORM OF AUDIT, MOVING FROM ONE BAD STEP TO A WORSE BECOMES MUCH MORE DIFFICULT AND THE ROLE OF THE NON-EXECUTIVE DIRECTORS AND BEHIND THEM THAT OF THE SHAREHOLDERS IS GREATLY STRENGTHENED," MR NENDICK SAID.

THE FINAL BUTTRESS MR NENDICK TOLD THE PARTICIPANTS WAS THE ROLE OF THE AUTHORITIES.

"HERE IN HONG KONG WE CAN FAIRLY CLAIM TO BE HEADING IN THE RIGHT DIRECTION. THE AUTHORITIES MUST DEAL WITH COMMERCIAL CRIME WITH THE PROMPTNESS AND SEVERITY IT DESERVES. DETECTION MAY BE DIFFICULT. BUT IT MUST BE SEEN THAT ONCE IT IS DETECTED IT WILL BE DEALT WITH WITHOUT FEAR OR FAVOUR.

/"THE PROMPTNESS

TUESDAY, AUGUST 4, 1987

- 4 -

"THE PROMPTNESS WITH WHICH WE HAVE BROUGHT MAJOR CASES TO THE COURTS AND THE MANNER IN WHICH OUR COURTS HAVE DEALT WITH THEM SHOULD BE THE WARNING AND THE DETERRENT THEY ARE MEANT TO BE," HE SAID.

MR NENDICK REITERATED THAT HONG KONG WAS NOT A PLACE WHERE THOSE WHO COMMITTED COMMERCIAL CRIME WOULD BE TOLERATED. "WE SEE OUR STANDING AS AN INTERNATIONAL FINANCIAL AND TRADING CENTRE AS AT STAKE. HONG KONG'S REPUTATION DEPENDS ON THE REPUTATION OF ITS INDIVIDUAL COMPANIES AND OUR MARKETS. THE GOVERNMENT WILL BE SCRUPULOUS IN DEFENDING THAT REPUTATION," HE ADDED.

- - - - 0 - - - -

MAY RETAIL SALES SURVEY RESULTS RELEASED

* * * * *

THE VALUE OF TOTAL RETAIL SALES IN MAY THIS YEAR, ESTIMATED AT \$6,632 MILLION, WAS 16 PER CENT HIGHER THAN IN MAY 1986 WHILST THEIR VOLUME WAS 8 PER CENT HIGHER, ACCORDING TO THE PROVISIONAL RESULTS OF A SURVEY RELEASED TODAY (TUESDAY) BY THE CENSUS AND STATISTICS DEPARTMENT.

COMPARED WITH MAY 1986, RETAIL SALES OF CLOTHING, FOOTWEAR AND ALLIED PRODUCTS INCREASED BY 24 PER CENT IN VALUE AND 17 PER CENT IN VOLUME. CONSUMER DURABLES AND "OTHER CONSUMER GOODS" ROSE BY 18 PER CENT AND 17 PER CENT RESPECTIVELY IN SALES VALUE AND 10 PER CENT AND 8 PER CENT RESPECTIVELY IN SALES VOLUME.

FOODSTUFFS, ALCOHOLIC DRINKS AND TOBACCO WENT UP BY 10 PER CENT IN SALES VALUE AND 5 PER CENT IN SALES VOLUME, WHILE THE CORRESPONDING INCREASES FOR FUELS WERE 6 PER CENT AND 3 PER CENT.

RETAIL SALES OF DEPARTMENT STORES ROSE VERY SUBSTANTIALLY IN BOTH VALUE AND VOLUME.

MOTOR VEHICLES AND PARTS RECORDED A VERY SUBSTANTIAL INCREASE IN SALES VALUE AND A SUBSTANTIAL INCREASE IN SALES VOLUME.

SUPERMARKET SALES INCREASED CONSIDERABLY IN BOTH VALUE AND VOLUME. SALES OF CONSUMER DURABLES OTHER THAN MOTOR VEHICLES AND PARTS REGISTERED A CONSIDERABLE INCREASE IN VALUE AND A MODERATE INCREASE IN VOLUME.

COMPARING THE THREE MONTHS MARCH TO MAY 1987 WITH THE SAME PERIOD IN 1986, TOTAL RETAIL SALES INCREASED BY 14 PER CENT IN VALUE AND 8 PER CENT IN VOLUME.

/RETAIL SALES

TUESDAY, AUGUST 4, 1987

- 5 -

RETAIL SALES OF CLOTHING, FOOTWEAR AND ALLIED PRODUCTS INCREASED BY 21 PER CENT IN VALUE AND 14 PER CENT IN VOLUME. CONSUMER DURABLES AND "OTHER CONSUMER GOODS" INCREASED BY 18 PER CENT AND 16 PER CENT RESPECTIVELY IN SALES VALUE AND 10 PER CENT AND 8 PER CENT RESPECTIVELY IN SALES VOLUME.

RETAIL SALES OF FOODSTUFFS, ALCOHOLIC DRINKS AND TOBACCO ROSE BY 9 PER CENT IN VALUE AND 5 PER CENT IN VOLUME.

FUEL SALES WENT UP BY 2 PER CENT IN VALUE AND 5 PER CENT IN VOLUME. RETAIL SALES OF MOTOR VEHICLES AND PARTS ROSE VERY SUBSTANTIALLY IN BOTH VALUE AND VOLUME TERMS.

DEPARTMENT STORES' SALES EXPERIENCED A SUBSTANTIAL INCREASE IN VALUE AND A CONSIDERABLE INCREASE IN VOLUME. SUPERMARKET SALES INCREASED CONSIDERABLY IN BOTH VALUE AND VOLUME. SALES OF CONSUMER DURABLES OTHER THAN MOTOR VEHICLES AND PARTS RECORDED A CONSIDERABLE INCREASE IN VALUE AND SLIGHT INCREASE IN VOLUME.

WHEN COMPARED WITH APRIL 1987, AND BEARING IN MIND THAT THIS COMPARISON IS AFFECTED BY SEASONAL FACTORS, TOTAL RETAIL SALES FOR MAY 1987 INCREASED BY 5 PER CENT IN VALUE AND 4 PER CENT IN VOLUME.

"CLOTHING, FOOTWEAR AND ALLIED PRODUCTS" AND CONSUMER DURABLES WENT UP BY 8 PER CENT AND 7 PER CENT RESPECTIVELY IN SALES VALUE WHILE BOTH GROUPS INCREASED IN SALES VOLUME BY 6 PER CENT. "OTHER CONSUMER GOODS" ROSE BY 6 PER CENT IN SALES VALUE AND 4 PER CENT IN SALES VOLUME.

IN BOTH SALES VALUE AND VOLUME, FOODSTUFFS, ALCOHOLIC DRINKS AND TOBACCO INCREASED BY 1 PER CENT WHILE FUELS RECORDED ALMOST NO CHANGE.

RETAIL SALES OF DEPARTMENT STORES AND CONSUMER DURABLES OTHER THAN MOTOR VEHICLES AND PARTS INCREASED CONSIDERABLY IN BOTH VALUE AND VOLUME. SUPERMARKETS REGISTERED SLIGHT INCREASES IN BOTH SALES VALUE AND VOLUME.

SALES OF MOTOR VEHICLES AND PARTS DECREASED SLIGHTLY IN BOTH VALUE AND VOLUME.

THE REPORT CONTAINING THE ANALYSIS OF THE MAY 1987 SURVEY RESULTS IS NOW ON SALE AT GOVERNMENT PUBLICATION SALES CENTRE, GENERAL POST OFFICE BUILDING, CONNAUGHT PLACE, AT \$1 PER COPY.

/ENQUIRIES ABOUT

TUESDAY, AUGUST 4, 1987

- 6 -

ENQUIRIES ABOUT THE SURVEY RESULTS MAY BE DIRECTED TO THE WHOLESALE AND RETAIL TRADE STATISTICS SECTION OF THE CENSUS AND STATISTICS DEPARTMENT ON 5-8234941.

NOTE TO EDITORS:

TWO TABLES AND GRAPHS WILL BE SENT BY THE FACSIMILE LATER AND BOXED FOR COLLECTION.

TABLE 1 PRESENTS THE REVISED TOTAL RETAIL SALES FIGURE FOR APRIL 1987 AND THE PROVISIONAL FIGURE FOR MAY 1987.

TABLE 2 SHOWS THE VALUE AND VOLUME INDICES OF RETAIL SALES IN APRIL 1987 AND MAY 1987 (A) FOR ALL RETAIL TRADES, (B) BY MAJOR TRADE GROUPS AND (C) BY SELECTED TRADES (WHICH FORM PART OF THE RELEVANT MAJOR TRADE GROUPS), WITH AVERAGE RETAIL SALES FROM OCTOBER 1984 TO SEPTEMBER 1985 TAKEN AS 100. COMPARISONS OF MAY 1987 RESULTS WITH THOSE FOR APRIL 1987 AND WITH THOSE FOR MAY 1986 AND COMPARISONS OF RETAIL SALES IN THE THREE MONTHS MARCH TO MAY 1987 WITH THE SAME PERIOD IN 1986 ARE ALSO GIVEN.

GRAPHS 1 AND 2 DEPICT, RESPECTIVELY, THE MOVEMENTS OF THE VALUE AND VOLUME INDICES OF TOTAL RETAIL SALES FROM OCTOBER 1984 TO MAY 1987 AND THE SEASONALLY ADJUSTED INDICES AND TRENDS FROM OCTOBER 1984 TO APRIL 1987.

/TABLE 1 :

TABLE 1 : TOTAL RETAIL SALES

Total Retail Sales for May 1987 (Provisional Figure) = HK\$6 632 million
for April 1987 (Revised Figure) = HK\$6 307 million

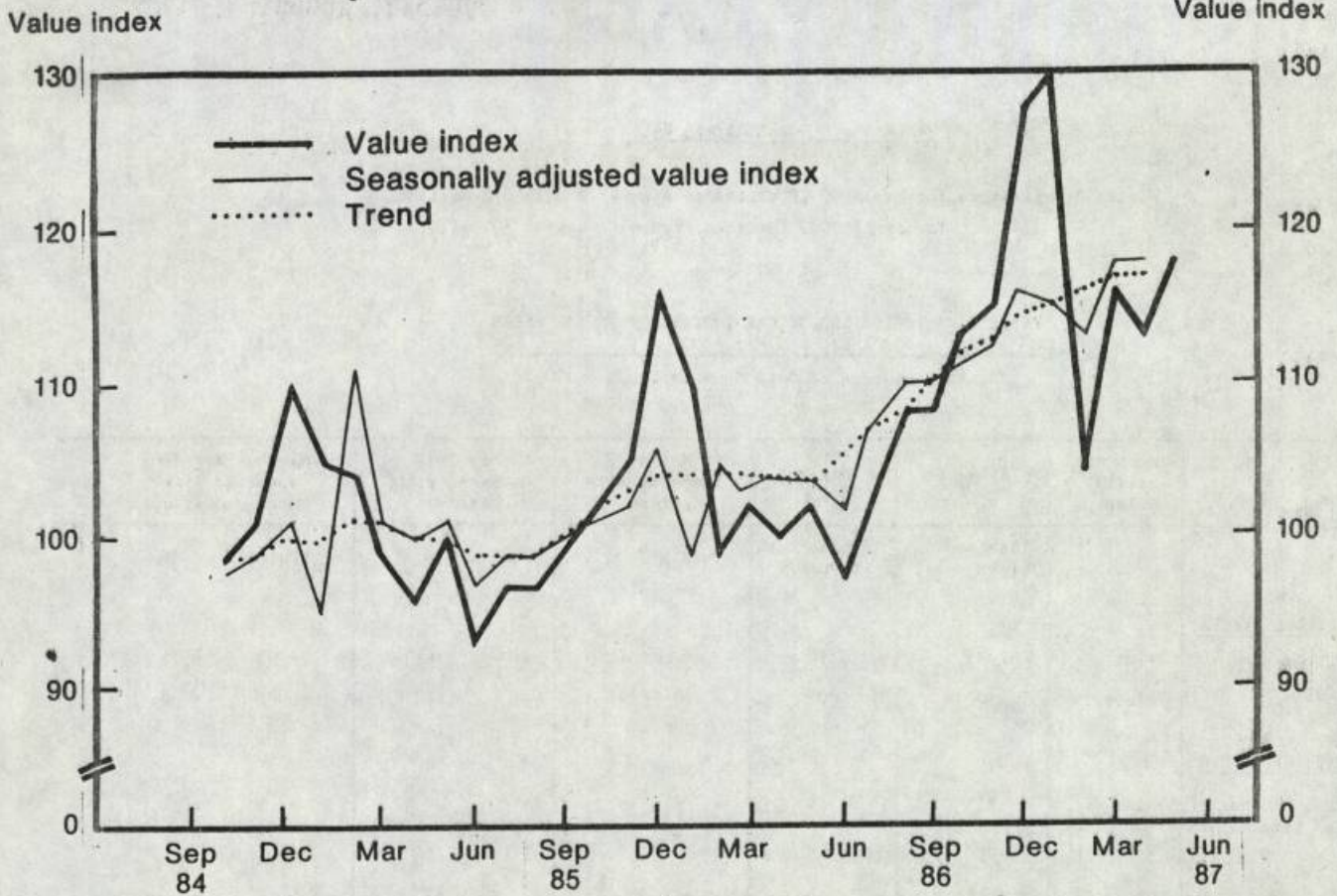
TABLE 2 : VALUE AND VOLUME INDEXES OF RETAIL SALES
FOR APRIL AND MAY 1987

(Monthly average of Oct. 84 - Sept. 85 = 100)

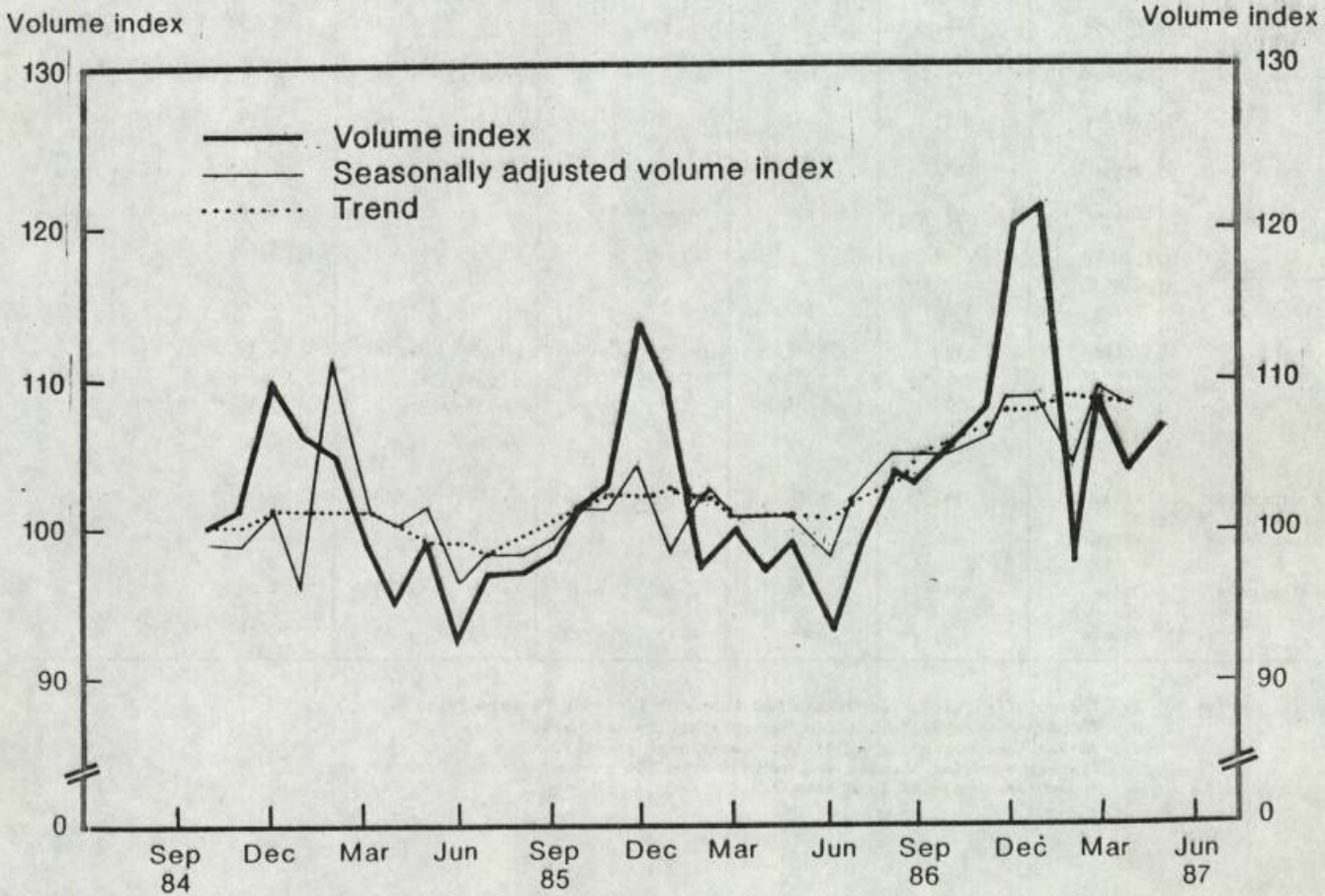
Item	Index of Retail Sales	April 1987	May 1987	May 1987 compared with April 1987		May 1987 compared with May 1986		March - May 1987 compared with March - May 1986	
				Points	%	Points	%	Points	%
(A) FOR ALL RETAIL TRADES									
	Value	113	118	+ 6	+ 5	+ 16	+ 16	+ 15	+ 14
	Volume	103	107	+ 4	+ 4	+ 8	+ 8	+ 8	+ 8
(B) BY MAJOR TRADE GROUPS									
Foodstuffs, alcoholic drinks and tobacco	Value	113	114	+ 1	+ 1	+ 10	+ 10	+ 9	+ 9
	Volume	109	110	+ 1	+ 1	+ 5	+ 5	+ 5	+ 5
Fuels	Value	94	94	*	*	+ 5	+ 6	+ 2	+ 2
	Volume	104	105	*	*	+ 3	+ 3	+ 5	+ 5
Clothing, footwear and allied products	Value	132	143	+ 11	+ 8	+ 28	+ 24	+ 23	+ 21
	Volume	116	123	+ 7	+ 6	+ 18	+ 17	+ 15	+ 14
Consumer durables	Value	119	127	+ 9	+ 7	+ 20	+ 18	+ 19	+ 18
	Volume	105	110	+ 6	+ 6	+ 10	+ 10	+ 10	+ 10
Other consumer goods	Value	108	114	+ 7	+ 6	+ 17	+ 17	+ 16	+ 16
	Volume	97	100	+ 4	+ 4	+ 7	+ 8	+ 8	+ 8
(C) BY SELECTED TRADES									
Supermarkets	Value	122	125	+ 3	+ 3	+ 20	+ 18	+ 20	+ 19
	Volume	115	118	+ 3	+ 2	+ 15	+ 14	+ 15	+ 15
Motor vehicles and parts	Value	166	163	- 4	- 2	+ 42	+ 35	+ 49	+ 44
	Volume	133	127	- 6	- 5	+ 23	+ 22	+ 30	+ 31
Consumer durables other than motor vehicles and parts	Value	104	116	+ 12	+ 12	+ 13	+ 12	+ 10	+ 10
	Volume	96	105	+ 9	+ 10	+ 7	+ 7	+ 4	+ 4
Department stores	Value	104	122	+ 18	+ 17	+ 34	+ 39	+ 20	+ 23
	Volume	92	106	+ 13	+ 15	+ 25	+ 31	+ 14	+ 16

- Notes :
1. "Foodstuffs, alcoholic drinks and tobacco" includes "supermarkets".
 2. "Consumer durables" includes "motor vehicles and parts".
 3. "Other consumer goods" includes "department stores".
 4. Figures denoting changes are derived from the unrounded index figures.
 5. * denotes change of less than 0.5.

Graph 1: Value Indexes of Total Retail Sales



Graph 2: Volume Indexes of Total Retail Sales



Notes: (1) Monthly average of Oct. 84 - Sept. 85 = 100

(2) The seasonally adjusted value and volume indexes and Henderson trends are compiled using the X-11 variant seasonal adjustment program of the U.S. Bureau of the Census.

TUESDAY, AUGUST 4, 1987

- 9 -

SAI KUNG RESIDENTS URGED TO SUPPORT VOTERS REGISTRATION

* * * * *

SAI KUNG DISTRICT RESIDENTS WHO ARE ELIGIBLE TO REGISTER AS VOTERS SHOULD EXERCISE THEIR RIGHT FOR THE DISTRICT BOARD ELECTION NEXT YEAR, SAI KUNG ASSISTANT DISTRICT OFFICER, MISS BETTY CHING, SAID TODAY (TUESDAY).

MISS CHING, WHO RECENTLY MOVED TO SAI KUNG ESTABLISHING HERSELF A RESIDENT OF THE DISTRICT, TOOK THE LEAD TO FILL IN THE NOTICE OF CHANGE OF RESIDENTIAL ADDRESS IN HER VOTER REGISTRATION PARTICULARS.

THE SAI KUNG DISTRICT VOTERS' REGISTRATION EXERCISE WAS LAUNCHED TODAY AND WILL LAST UNTIL THE END OF SEPTEMBER.

APPEAL LETTERS HAD ALREADY BEEN DISTRIBUTED TO ALL VILLAGES, MUTUAL AID COMMITTEES, OWNERS' CORPORATIONS, RURAL COMMITTEES AND LOCAL ORGANISATIONS IN THE DISTRICT URGING PEOPLE TO REGISTER.

PUBLICITY SIGNBOARDS AND POSTERS WILL BE MOUNTED THROUGHOUT THE DISTRICT TO PUBLICISE THE THEME OF THE EXERCISE -- "EXERCISE YOUR RIGHTS, REGISTER AS ELECTOR".

A BROADCASTING VAN WILL ALSO TOUR THE DISTRICT TO SPREAD THE VOTER REGISTRATION MESSAGE.

SAI KUNG DISTRICT OFFICE STAFF WILL ALSO CONDUCT DOOR-TO-DOOR VISITS FROM AUGUST 5 TO SEPTEMBER 30, COVERING THE AREAS OF SAI KUNG TOWN, HANG HAU AND RENNIE'S MILL.

FACTORIES AND ELDERLY CENTRES IN THE DISTRICT WILL ALSO BE VISITED TO SUPPORT VOTER REGISTRATION.

RESIDENTS AGED 21 OR ABOVE BY THE END OF THE YEAR, BEING HONG KONG RESIDENTS OR HAVING RESIDED IN HONG KONG FOR SEVEN YEARS ARE ELIGIBLE FOR REGISTRATION.

VOTER REGISTRATION FORMS ARE AVAILABLE AT THE OFFICES OF THE SAI KUNG AND HANG HAU RURAL COMMITTEES AND THE PUBLIC ENQUIRY SERVICE COUNTER OF THE SAI KUNG DISTRICT OFFICE, MAN NIN STREET, SAI KUNG TOWN.

- - - - 0 - - - -

/10

TUESDAY, AUGUST 4, 1987

- 10 -

NEW INTERCHANGE FOR TUEN MUN NEW TOWN
* * * *

A NEW INTERCHANGE WILL BE BUILT AT TUEN MUN NEW TOWN TO FORM PART OF THE ROAD NETWORK SERVING THE RESIDENTIAL, INDUSTRIAL AND CARGO HANDLING AREAS NEAR YAU OI ESTATE.

THE INTERCHANGE AT WONG CHU ROAD WILL INCLUDE A SECTION OF NEW ROAD, FOUR SLIP ROADS, A ROAD BRIDGE, A PEDESTRIAN SUBWAY AND ASSOCIATED STORMWATER DRAINAGE.

ANCILLARY WORKS WILL ALSO BE CARRIED OUT AT FOUR OTHER LOCATIONS AS PART OF THE CONTINUING PROGRAMME FOR THE DEVELOPMENT OF THE NEW TOWN.

THESE COMPRISE BUILDING A NEW ROAD, TOGETHER WITH ASSOCIATED DRAINAGE WORK, OPPOSITE TSING HOI CIRCUIT; TREATMENT WORK TO SLOPES OPPOSITE CHI LOK FA YUEN AND LEUNG KING ESTATE; AND PROVISION OF AN ADDITIONAL STAIRCASE FOR THE FOOTBRIDGE IN CHUNG UK TSUEN, LAM TEI.

• THE TERRITORY DEVELOPMENT DEPARTMENT IS INVITING TENDERS FOR THE PROJECT, WORK ON WHICH IS EXPECTED TO START IN OCTOBER AND BE COMPLETED WITHIN 24 MONTHS.

THE DEADLINE FOR SUBMITTING TENDERS IS NOON ON AUGUST 21.

- - - - 0 - - - -

SITE FORMATION AT SIU SAI WAN
* * *

CIVIL ENGINEERING WORKS ARE TO START SOON IN CONNECTION WITH STAGE II DEVELOPMENT AT SIU SAI WAN ON HONG KONG ISLAND.

THE WORKS INCLUDE FORMING 10.8 HECTARES OF SITE, RECLAIMING 7.6 HECTARES OF FORESHORE AND SEA-BED, AND CONSTRUCTING 440 METRES OF SEAWALL, 850 METRES OF CARRIAGEWAY AND ASSOCIATED DRAINAGE WORKS.

A TOTAL OF 18.4 HECTARES OF LAND WILL EVENTUALLY BE FORMED FOR DIFFERENT USES, INCLUDING PUBLIC RENTAL HOUSING, PRIVATE SECTOR PARTICIPATION SCHEME HOUSING, AND RESIDENTIAL/COMMERCIAL, INDUSTRIAL, GOVERNMENT, INSTITUTION, COMMUNITY, OPEN SPACE, ROADS AND OTHER DEVELOPMENTS.

WHEN A DUAL, TWO-LANE CARRIAGEWAY IS COMPLETED, IT WILL PROVIDE ACCESS FROM CHAI WAN ROAD TO THE FUTURE HOUSING ESTATE AND SIU SAI WAN DEVELOPMENT AREA.

WORK IS EXPECTED TO START IN NOVEMBER AND TAKE ABOUT TWO-AND-A-HALF YEARS TO COMPLETE.

/THE CIVIL

TUESDAY, AUGUST 4, 1987

- 11 -

THE CIVIL ENGINEERING SERVICES DEPARTMENT IS INVITING TENDERS BY NOON ON AUGUST 21.

THE WORKS HAVE BEEN DESIGNED AND CONSTRUCTION WILL BE SUPERVISED BY THE DEVELOPMENT AND AIRPORT DIVISION OF THE DEPARTMENT'S CIVIL ENGINEERING OFFICE.

- - - - 0 - - - -

UPGRADING OF TING KOK ROAD

* * *

TING KOK ROAD WILL BE IMPROVED TO ENHANCE TRAFFIC SAFETY AND TRANSPORT FACILITIES FOR MOTORISTS, CYCLISTS AND PEDESTRIANS BETWEEN TAI PO INDUSTRIAL ESTATE AND TAI MEI TUK.

THE SCHEME, DESIGNED BY THE NEW TERRITORIES/NORTHEAST DEVELOPMENT OFFICE OF THE TERRITORY DEVELOPMENT DEPARTMENT, WILL INVOLVE THE UPGRADING OF TING KOK ROAD FROM TAI PO INDUSTRIAL ESTATE TO PLUMMER VILLAGE AND THE EXTENSION OF A SEGREGATED CYCLE TRACK THROUGH TO TAI MEI TUK.

A PROJECT ENGINEER OF THE DEPARTMENT, MR DOVER WONG, SAID THAT AT PRESENT CYCLISTS ENDANGERED THEMSELVES AND OTHERS BY VYING FOR RIGHT OF WAY WITH MOTORISTS. THE SITUATION WAS ESPECIALLY SERIOUS DURING WEEKENDS AND HOLIDAYS WHEN VISITORS TOURED THE SURROUNDING AREA AND LEISURE FACILITIES ON BICYCLES.

TO INCREASE MUCH NEEDED TRANSPORT FACILITIES FOR HOLIDAY-MAKERS AND VILLAGE RESIDENTS AROUND TAI MEI TUK, THE IMPROVEMENT ALSO PROVIDES FOR RECLAMATION OF APPROXIMATELY FIVE HECTARES OF FORESHORE AND SEABED AT TAI MEI TUK TO PROVIDE LAND FOR THE CONSTRUCTION OF TRANSPORT FACILITIES SUCH AS A BUS TERMINUS, CAR AND COACH PARKING FACILITIES AND A TAXI RANK, DISTRICT OPEN SPACE FACILITIES, AND SUBWAY CROSSINGS FOR PEDESTRIANS AND CYCLISTS.

ANOTHER MAJOR PROVISION IN THE SCHEME IS THE INSTALLATION OF A SEWER FROM SAM MUN TSAI TO TAI PO SEWAGE TREATMENT WORKS ON TAI PO INDUSTRIAL ESTATE TO CATER FOR PRIVATE DEVELOPMENT UNDER PLANNING IN THE AREA.

DESCRIPTIONS OF THE WORKS TO BE CARRIED OUT UNDER THE SCHEME WERE PUBLISHED IN THE LATEST ISSUE OF THE GOVERNMENT GAZETTE.

WRITTEN OBJECTIONS SHOULD REACH THE SECRETARY FOR TRANSPORT BEFORE SEPTEMBER 29.

- - - - 0 - - - -

/12

TUESDAY, AUGUST 4, 1987

- 12 -

TAI PO AMBULANCE DEPOT OPENS

* * *

THE \$7 MILLION TAI PO AMBULANCE DEPOT SERVING RESIDENTS IN THE EASTERN PART OF NEW TERRITORIES WAS OFFICIALLY OPENED TODAY (TUESDAY) BY THE CHIEF AMBULANCE OFFICER, MR PANG TAK-SUM.

SPEAKING AT THE OPENING CEREMONY, MR PANG SAID THE GOVERNMENT WAS ALWAYS KEEPING PACE WITH ADVANCED COUNTRIES IN PROVIDING AN EFFICIENT AMBULANCE SERVICE AND EFFECTIVE PRE-HOSPITAL CARE TO THE PEOPLE.

"THERE ARE NOW 64 AMBULANCES OPERATING FROM 10 AMBULANCE DEPOTS AND FOUR FIRE STATIONS IN THE NEW TERRITORIES.

"A NEW AMBULANCE DEPOT IN TIN SUM, SHA TIN HAS BEEN COMPLETED RECENTLY AND WILL BE PUT IN COMMISSION SOON.

"PLANS ARE IN HAND TO SPLIT THE NEW TERRITORIES DIVISION OF THE AMBULANCE COMMAND INTO TWO TO FACILITATE EFFICIENT OPERATION AND ADMINISTRATION," MR PANG SAID.

THE NEW DEPOT, LOCATED ON TAI WO ROAD, TAI PO, HAS BEEN IN OPERATION SINCE JANUARY 20, AND RESPONDED ON AVERAGE 43 CALLS A DAY.

- - - - 0 - - - -

SURVEY ON GREEN PAPER

* * *

A SURVEY TO COLLECT RESIDENTS' VIEWS ON THE GREEN PAPER ON THE REVIEW OF DEVELOPMENTS IN REPRESENTATIVE GOVERNMENT IS BEING CONDUCTED IN THE YAU MA TEI DISTRICT.

THE SURVEY IS BEING CARRIED OUT BY A CONSULTANT FIRM COMMISSIONED BY THE YAU MA TEI DISTRICT BOARD'S WORKING GROUP ON POLITICAL REFORM.

"A TOTAL OF 400 PEOPLE IN THE DISTRICT WILL BE RANDOMLY SELECTED FOR TELEPHONE INTERVIEWS DURING THE SURVEY PERIOD WHICH WILL LAST UNTIL AUGUST 11," A SPOKESMAN FOR THE WORKING GROUP SAID.

THE FINDINGS OF THE SURVEY WILL BE SUBMITTED TO THE WORKING GROUP IN SEPTEMBER AND THE INFORMATION WILL BE PASSED ON TO THE DISTRICT BOARD AND THE SURVEY OFFICE, HE ADDED.

THE SURVEY IS PART OF A SERIES OF ACTIVITIES ORGANISED BY THE WORKING GROUP TO HELP PUBLICISE THE DOCUMENT AMONG RESIDENTS.

/A SUM

A SUM OF \$88,000 HAS BEEN ALLOCATED FROM DISTRICT BOARD FUNDS TO SUPPORT THE ACTIVITIES WHICH INCLUDE PRINTING LEAFLETS, POSTERS, LETTERGRAMMES, DISPLAYING BANNERS, HOLDING EXHIBITIONS AND SEMINARS.

THE DISTRICT BOARD HAS ALSO ARRANGED SPECIAL MEET-THE-PUBLIC SESSIONS EVERY WEDNESDAY EVENING TO GATHER VIEWS FROM THE RESIDENTS ON THE DOCUMENT.

- - - - 0 - - - -

DISCUSSION ON SOCIAL WELFARE BENEFITS
* * * * *

THE CURRENT LEVEL OF PUBLIC ASSISTANCE AND OLD AGE ALLOWANCE WILL BE DISCUSSED AT THE SHA TIN DISTRICT BOARD'S HEALTH, EDUCATION AND WELFARE COMMITTEE MEETING TOMORROW (WEDNESDAY) AFTERNOON.

DISTRICT BOARD MEMBER, MR WONG HON-CHUNG, WILL ASK IF THERE ARE ANY GUIDELINES FOR DETERMINING THE RATE OF ASSISTANCE AND IF THERE ARE PLANS FOR REVISION. SHA TIN DISTRICT SOCIAL WELFARE OFFICER, MRS LESLIE HUNG, WILL ATTEND TO ANSWER QUESTIONS.

THE COMMITTEE WILL ALSO DISCUSS PAPERS ON THE DREDGING WORK IN THE SHING MUN RIVER AND SURVEY OF INDUSTRIAL EFFLUENTS, WHICH WILL BE PRESENTED BY THE CIVIL ENGINEERING SERVICES AND ENVIRONMENTAL PROTECTION DEPARTMENTS RESPECTIVELY.

ALSO ON THE AGENDA WILL BE A PAPER ON THE SUI WO COURT CHILDREN AND YOUTH CENTRE, FIVE YEAR FORECASTS AND ANNUAL ESTIMATES OF FUNDS FOR THE BOARD, AS WELL AS PROGRESS REPORTS FROM THE COMMITTEE'S WORKING GROUPS.

- - - - -

NOTE TO EDITORS:

YOU ARE INVITED TO COVER THE COMMITTEE MEETING TO BE HELD AT 2.30 PM TOMORROW (WEDNESDAY) IN THE DB CONFERENCE ROOM ON 6/F., KCR HOUSE, SHA TIN STATION.

- - - - 0 - - - -

TUESDAY, AUGUST 4, 1987

- 14 -

EASTERN DISTRICT BOARD TO MEET

* * * * *

THE EASTERN DISTRICT BOARD WILL DISCUSS THE CONSULTATION PAPER ON MANAGEMENT IN PRIVATE MULTI-STORY BUILDINGS AT THEIR MEETING ON THURSDAY (AUGUST 6).

BOARD MEMBERS WILL ALSO COMMENT ON THE PROPOSED ARRANGEMENT FOR THE DISPOSAL OF SURPLUS EXCAVATED MATERIAL FROM THE FUTURE DEVELOPMENT OF THE SHAU KEI WAN FOOTHILLS (WEST) PUBLIC HOUSING ESTATE.

SITE FORMATION WORKS FOR THE PUBLIC HOUSING ESTATE WILL BE CARRIED OUT BETWEEN NOVEMBER 1988 AND APRIL 1992 AND ABOUT 4,200 FLATS FOR 160,000 PEOPLE WILL BE PROVIDED BY THE END OF 1994.

- - - - -

NOTE TO EDITORS:

YOU ARE INVITED TO COVER THE MEETING AT 2.30 PM ON THURSDAY (AUGUST 6) IN THE CONFERENCE ROOM OF THE DISTRICT OFFICE ON THE 1ST FLOOR, 880-886 KING'S ROAD.

- - - - 0 - - - -

YOUTH ORCHESTRA ON UK VISIT

* * * * *

SIXTY-EIGHT MEMBERS OF THE MUSIC OFFICE'S HONG KONG YOUTH SYMPHONY ORCHESTRA WILL VISIT THE UNITED KINGDOM FROM AUGUST 8 TO 23.

A 'MEET-THE-MEDIA' SESSION TO ANNOUNCE DETAILS OF THE TOUR, ORGANISED BY THE MUSIC OFFICE OF THE MUNICIPAL SERVICES BRANCH, WILL BE HELD TOMORROW (WEDNESDAY).

THE MUSIC ADMINISTRATOR, MRS DORIS HO, ASSISTANT MUSIC ADMINISTRATOR (PROFESSIONAL), MR THOMAS WANG, AND MEMBERS OF THE TOUR GROUP WILL BE PRESENT AT THE 'MEET-THE-MEDIA' SESSION AND AVAILABLE FOR INTERVIEWS AFTERWARDS.

- - - - -

NOTE TO EDITORS:

YOU ARE CORDIALLY INVITED TO COVER THE SESSION TO BE HELD AT THE LECTURE ROOM OF THE NGAU CHI WAN CIVIC CENTRE, 3RD FLOOR, URBAN COUNCIL NGAU CHI WAN COMPLEX, 11 CLEARWATER BAY ROAD (NEAR THE CHOI HUNG MTR STATION) TOMORROW (WEDNESDAY) AT 3 PM. FURTHER INFORMATION CAN BE OBTAINED ON 5-8235337.

- - - - 0 - - - -

/15

TUESDAY, AUGUST 4, 1987

- 15 -

TAXI RESTRICTED ZONES IN TSUEN WAN

* * * * *

A NUMBER OF ROADS IN TSUEN WAN WILL BE DESIGNATED PROHIBITED ZONES FOR NEW TERRITORIES TAXIS FROM 10 AM ON FRIDAY (AUGUST 7).

THESE ROADS ARE:

- * THE SECTION OF WAI TSUEN ROAD SOUTH OF ITS JUNCTION WITH TSUEN KAM INTERCHANGE;
- * THE SLIP ROAD LINKING THE NORTHBOUND CARRIAGEWAY OF TEXACO ROAD NORTH WITH SHEK WAI KOK ROAD;
- * THE SECTION OF SHING MUN ROAD SOUTH OF ITS JUNCTION WITH MIU KONG STREET;
- * THE SECTION OF THE EASTBOUND CARRIAGEWAY OF CASTLE PEAK ROAD EAST OF ITS JUNCTION WITH TAI HO ROAD;
- * THE SLIP ROAD LINKING THE NORTHBOUND CARRIAGEWAY OF TAI HO ROAD WITH THE WESTBOUND CARRIAGEWAY OF CASTLE PEAK ROAD;
- * THE LOOP ROAD LINKING THE NORTHBOUND CARRIAGEWAY OF TAI HO ROAD WITH THE SOUTHBOUND CARRIAGEWAY OF TAI HO ROAD;
- * THE SECTION OF HOI PA STREET WEST OF ITS JUNCTION WITH TAI HO ROAD;
- * THE SECTION OF SHA TSUI ROAD EAST OF ITS JUNCTION WITH TAI HO ROAD;
- * THE SECTION OF TAI HO ROAD SOUTH OF ITS JUNCTION WITH TAI HO ROAD ROUNDABOUT;
- * THE SECTION OF SHA TSUI ROAD WEST OF ITS JUNCTION WITH TAI HO ROAD ROUNDABOUT; AND
- * THE SECTION OF SHA TSUI ROAD EAST OF ITS JUNCTION WITH TAI HO ROAD ROUNDABOUT.

NO NT TAXIS WILL BE ALLOWED TO ENTER THE PROHIBITED ZONES 24-HOUR DAILY.

WITH EFFECT FROM THE SAME TIME, THE FOLLOWING ROAD SECTIONS WILL BE MADE NT TAXI RESTRICTED ZONES 24-HOUR DAILY:

- * THE SECTION OF NORTHBOUND CARRIAGEWAY OF TEXACO ROAD NORTH BETWEEN ITS JUNCTION WITH SHING MUN ROAD AND TSUEN KAM INTERCHANGE;
- * MIU KONG STREET;

/ * THE SECTION

TUESDAY, AUGUST 4, 1987

- 16 -

- * THE SECTION OF SHING MUN ROAD BETWEEN ITS JUNCTIONS WITH MIU KONG STREET AND TEXACO ROAD NORTH;
- * TAI HO ROAD NORTH;
- * TAI HO ROAD SOUTHBOUND CARRIAGEWAY BETWEEN ITS JUNCTIONS WITH HOI PA STREET AND SHA TSUI ROAD; AND
- * TAI HO ROAD NORTHBOUND CARRIAGEWAY BETWEEN ITS JUNCTIONS WITH SHA TSUI ROAD AND SAI LAU KOK ROAD.

ALL NT TAXIS WILL BE PROHIBITED FROM STOPPING FOR PASSENGERS OR GOODS WITHIN THESE AREAS.

- - - - 0 - - - -

TRAFFIC ARRANGEMENTS IN KOWLOON TONG AND TSUEN WAN
* * * * *

TEMPORARY TRAFFIC ARRANGEMENTS WILL BE IMPLEMENTED IN KOWLOON TONG FOR ABOUT A MONTH FOR ROAD WORK FROM 10 AM ON FRIDAY (AUGUST 7).

HO TUNG ROAD BETWEEN LANCASHIRE ROAD AND DERBY ROAD; AND DERBY ROAD BETWEEN CHESTER ROAD AND HO TUNG ROAD WILL BE CLOSED TO TRAFFIC.

TRAFFIC ON CHESTER ROAD HEADING FOR DERBY ROAD WILL HAVE TO TURN LEFT ON TO DERBY ROAD AND WATERLOO ROAD.

IN TSUEN WAN, WAI TSUEN ROAD BETWEEN THE ACCESS ROAD TO LUK YEUNG SUN CHUEN AND MIU KONG STREET WILL BE CLOSED TO TRAFFIC FOR ABOUT NINE MONTHS FOR THE CONSTRUCTION OF AN UNDERPASS.

MOTORISTS HEADING FOR TSUEN WAN WILL BE DIVERTED VIA TEXACO ROAD NORTH OR TAI HO ROAD NORTH.

- - - - 0 - - - -

DEPOSIT-TAKING COMPANY LICENCE REVOKED
* * * * *

THE COMMISSIONER OF BANKING ANNOUNCED THAT THE REGISTRATION OF CHIAP HUA CREDIT LIMITED AS A DEPOSIT-TAKING COMPANY HAS BEEN REVOKED TODAY (TUESDAY) AT ITS OWN REQUEST UNDER SECTION 31(2) OF THE BANKING ORDINANCE 1986.

- - - - 0 - - - -