

	<u>TABLE NO.</u>
IX. <u>Training Programme</u>	
Training of Nursing Staff in 1984	81
Overseas Courses of Instruction 1984/85	82
Departmental Training 1984/85	83
X. <u>Medical Development</u>	
Building Programme 1984/85	84
XI. <u>Miscellaneous</u>	
Attendance at Conferences etc. Overseas 1984/85	85
Overseas Visitors 1984/85	86
Publications 1984/85	87
Samaritan Fund 1984/85	88
List of Donations Received for the Year Ended 31st March 1985	89

TABLE 1 ESTABLISHMENT OF MEDICAL & HEALTH DEPARTMENT AS AT 31.3.1985

Grade	Zone	Establishment as at 31.3.1985										Strength on 31.3.1985		
		Headquarters & Health/Miscellaneous Services	Kowloon Hospital	Prince of Wales Hospital	Princess Margaret Hospital	Queen Elizabeth Hospital	Queen Mary Hospital	Medical Services	Mental Health Service	Total				
Director of Medical & Health Services		1												1
Deputy Director of Medical & Health Services		2												2
Senior Assistant Director of Medical & Health Services		4												4
Assistant Director of Medical & Health Services		4												4
#Consultant (Incl Dental)		12	1	1	16	25	10	13	8					88
Principal Medical & Health Officer		14	1	1	1	1	1	2						14
Senior Medical & Health Officer/Medical & Health Officer		197	12	147	193	305	120	343	78					1309
Nursing Director		1												1
##Nursing Staff (Incl Psychiatric Nursing Staff)		972	467	1628	1241	1697	1254	936	1195					9241
Senior Inoculator/Inoculator		107												107
Midwife/Student Midwife		152			17		12	154						276
Principal Dental Officer/Senior Dental Officer/ Dental Officer/Assistant Dental Officer		111	3	2	3	4	2		4					125
Dental Hygienist/Student Dental Hygienist		3												3
Dental Inspector		2												2
Senior Dental Surgery Assistant/Dental Surgery Assistant		120	3	2	3	4	3		4					131

TABLE 1 (Cont'd)

Grade	Zone	Headquarters & Health/Miscellaneous Services	Kowloon Hospital	Prince of Wales Hospital	Princess Margaret Hospital	Queen Elizabeth Hospital	Queen Mary Hospital	Medical Services	Mental Health Service	Total	Strength on 31.3.1985
Senior Dental Technologist/Dental Technologist Dental Technician I/Dental Technician II/ Student Dental Technician		3		1	1	1	1			3	3
Tutor Dental Therapist/Senior Dental Therapist/ Dental Therapist/Student Dental Therapist		191								191	189
*Chief Medical Technologist/Senior Medical Technologist/ Medical Technologist/Medical Laboratory Technician I/ Medical Laboratory Technician II/Student Medical Laboratory Technician		1		80	77	90	13	220	7	488	442
Superintendent Occupational Therapist/Senior Occupational Therapist/Occupational Therapist I/Occupational Therapist II/Occupational Therapy Assistant			15	17	19	20	9	47	138	265	253
*Chief Pharmacist/Senior Pharmacist/Pharmacist/ Chief Dispenser/Senior Dispenser/Dispenser/ Student Dispenser		30	7	37	25	28	26	357	12	522	497
*Superintendent Physiotherapist/Senior Physiotherapist/ Physiotherapist I/Physiotherapist II			17	34	21	37	24	88	2	223	192
Senior Physicist/Physicist		4		7		5	3			19	18
Superintendent Radiographer/Senior Radiographer/ Radiographer I/Radiographer II/Student Radiographer		1	9	66	30	96	53	47	3	305	286

TABLE 1 (Cont'd)

Grade	Zone	Headquarters & Health/Miscellaneous Services	Kowloon Hospital	Prince of Wales Hospital	Princess Margaret Hospital	Queen Elizabeth Hospital	Queen Mary Hospital	Medical Services	Mental Health Service	Total	Strength on 31.3.1985
*Senior Mould Laboratory Technician/Mould Laboratory Technician/Student Mould Laboratory Technician				7		8	3			18	19
Senior X-ray Assistant/X-ray Assistant X-ray Mechanic				5	1	2	4	34		34	33
Audiology Technician I/Audiology Technician II					2			1		4	3
Chiropodist I/Chiropodist II					2			4		2	2
Clinical Psychologist		3		4	4	5	4	2	9	11	11
Senior Dietitian/Dietitian				13	2	4	4	5	4	27	27
Senior Electrical Technician/Electrical Technician						12		2		28	26
Senior Foreman/Foreman		10	1			6	5	2	3	28	27
Principal Hospital Administrator/Chief Hospital Administrator/Senior Hospital Administrator/Hospital Administrator I/Hospital Administrator II		50	2	4	4	4	5	4	7	82	79
Chief Hospital Foreman/Senior Hospital Foreman/ Hospital Foreman		9	5	8	5	5	7	13	13	65	57

TABLE 1 (Cont'd)

Grade	Zone	Headquarters & Health/Miscellaneous Services	Kowloon Hospital	Prince of Wales Hospital	Princess Margaret Hospital	Queen Elizabeth Hospital	Queen Mary Hospital	Medical Services	Mental Health Service	Total	Strength on 31.3.1985
Laundry Manager/Assistant Laundry Manager		3				3				6	6
Linen Production Unit Manager/Linen Production Unit Supervisor		5				1				6	6
Machinist		84								84	77
Medical Board Assistant		1								1	1
Mortuary Supervisor				1	1	2	1	3		8	8
Orthoptist I/Orthoptist II								4		4	4
Senior Optical Technician/Optical Technician								7		7	7
Photographer I/Photographer II				2	1	2	1	2		8	7
Senior Prosthetist/Prosthetist I/Prosthetist II/Student Prosthetist				12		6		30		48	48
Scientific Officer (Medical)				7	2	4		10		23	22
Speech Therapist		4						3		3	1
Tailor		1								4	3
Senior Training Officer										1	1
Assistant Transport Supervisor			1				1			2	2

TABLE 1 (Cont'd)

Grade	Zone	Headquarters & Health/Miscellaneous Services	Kowloon Hospital	Prince of Wales Hospital	Princess Margaret Hospital	Queen Elizabeth Hospital	Queen Mary Hospital	Medical Services	Mental Health Service	Total	Strength on 31.3.1985
Administrative Officer Staff Grade 'B' / Administrative Officer Staff Grade 'C' / Senior Administrative Officer/Administrative Officer		5+3@								5+3@	7
Chauffeur		1								1	1
*Principal Executive Officer/Chief Executive Officer/Senior Executive Officer/Executive Officer I/Executive Officer II		36+1@				1				37+1@	39
Chinese Language Officer I/Chinese Language Officer II		3								3	3
#*General Grade Staff		749	40	127	114	175	104	334	103	1746	1837
Senior Health Inspector/Health Inspector I/Health Inspector II		11								11	10
Senior Statistician/Statistician/Statistical Officer I/Statistical Officer II/Student Statistical Officer		23		1	1	2	1			28	28
*Chief Supplies Officer/Senior Supplies Officer/Supplies Officer/Assistant Supplies Officer/Supplies Supervisor I/Supplies Supervisor II/Supplies Assistant		43	6	10	10	11	6	29	12	127	126

TABLE 1 (Cont'd)

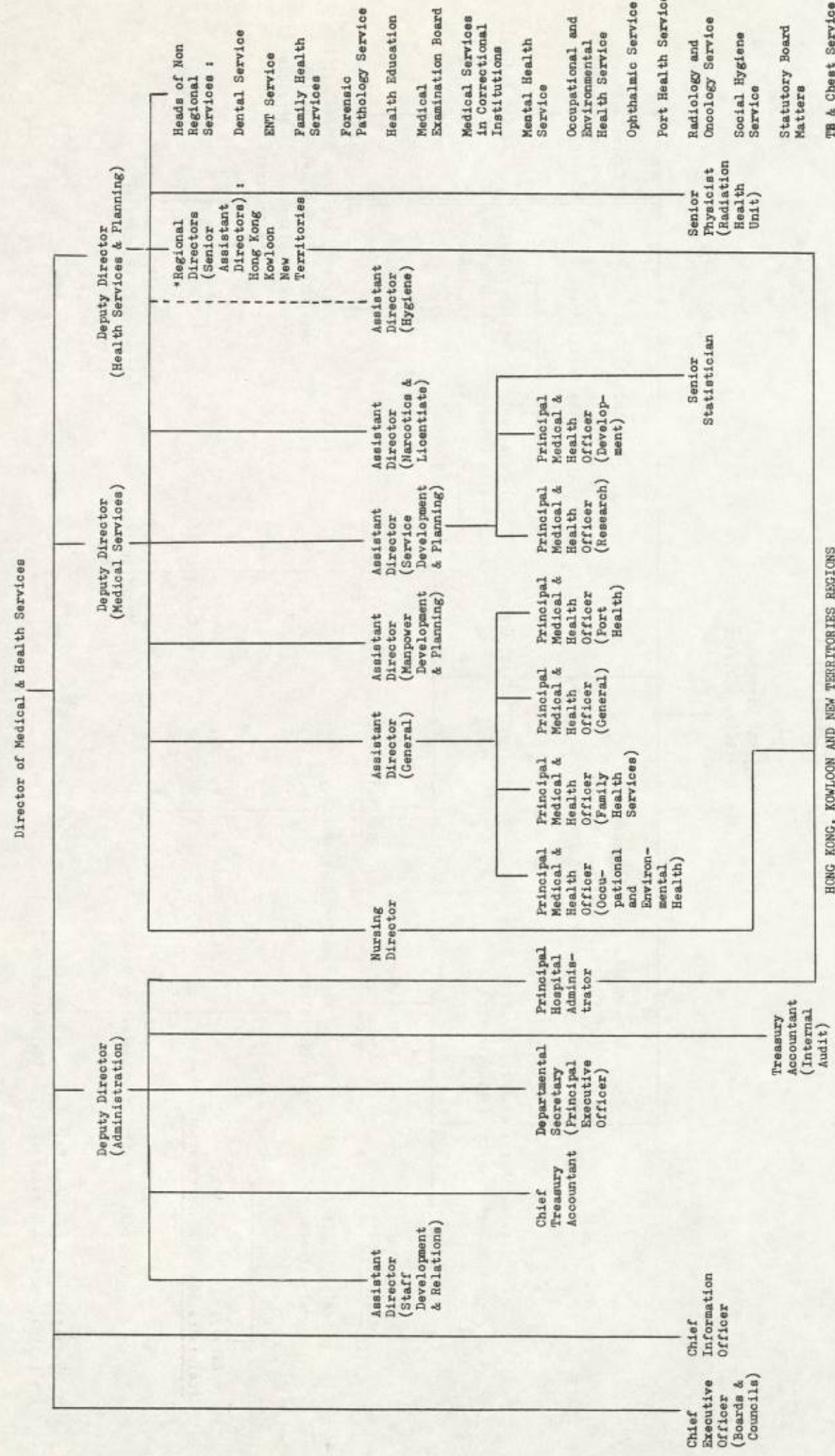
Grade	Zone	Headquarters & Health/Miscellaneous Services	Kowloon Hospital	Prince of Wales Hospital	Princess Margaret Hospital	Queen Elizabeth Hospital	Queen Mary Hospital	Medical Services	Mental Health Service	Total	Strength on 31.3.1985
*Telephone Operator		2	5	7	7	8	7	20	11	67	65
Chief Treasury Accountant/Senior Treasury Accountant/ Treasury Accountant/Accounting Officer I/ Accounting Officer II		17								17	15
*Minor Staff		971	478	981	884	1324	877	1422	1147	8084	7798
	Total	4016+4 <sup>@</sup>	1075	3212	2685	3894	2556	4137	2760	24335+4 <sup>@</sup>	23643

<sup>@</sup> Supernumerary posts

\* Excluding (768) supernumerary posts held against other posts

# Excluding (13) supernumerary posts created for short leave replacement

TABLE 2 ORGANISATION OF MEDICAL & HEALTH DEPARTMENT - POSITION AS AT 31.3.1985



\* Organisation of a Region is shown at Table 2(a)



TABLE 4 LEGISLATION OF MEDICAL AND HEALTH IMPORTANCE

APRIL 1984 to MARCH 1985

ORDINANCE

Antibiotics, Pharmacy and Poisons (Miscellaneous Amendments) Ordinance 1984  
Dentists Registration (Amendment) Ordinance 1984  
Medical Clinics (Amendment) Ordinance 1984  
Medical Registration (Amendment) Ordinance 1984  
School Medical Service Board Incorporation (Amendment) Ordinance 1984  
Smoking (Public Health (Amendment)) Ordinance 1984

RULES AND REGULATIONS

Coroners Ordinance, Chapter 14 :  
Places for Post-Mortem Examination  
(Amendment) Order 1984

Dangerous Drugs Ordinance, Chapter 134 :  
Dangerous Drugs (Amendment of Fourth  
Schedule) Order 1984  
(No. 2) Order 1984

Drug Addiction Treatment Centres Ordinance,  
Chapter 244 :  
Drug Addiction Treatment Centre (Hei  
Ling Chau) Order 1984

Medical Registration (Amendment) Ordinance  
1984, No. 25 of 1984 :  
Medical Registration (Amendment)  
Ordinance 1984 (Commencement)  
Notice 1984

Pharmacy and Poisons Ordinance,  
Chapter 138 :  
Pharmacy and Poisons (Amendment)  
Regulations 1984  
Resolution approving the Regulations  
Poisons List (Amendment) Regulations  
1984  
Resolution approving the Regulations

Public Health (Animals and Birds) Ordinance,  
Chapter 139 :  
Regulation of Movement of Dogs Order  
1984

Smoking (Public Health) Ordinance,  
Chapter 371 :  
Smoking (Public Health) (Amendment)  
Regulations 1984  
Smoking (Public Health) (Specification of  
Newspaper Circulation) Notice 1984

Smoking (Public Health) (Amendment)  
Ordinance 1984, No. 26 of 1984  
Smoking (Public Health) (Amendment)  
Ordinance 1984 (Commencement)  
Notice 1984

Coroners Ordinance, Chapter 14 :  
Coroners (Fees) (Amendment) Rules  
1985

Dentists Registration Ordinance,  
Chapter 156 :  
Dentists (Registration and Disciplinary  
Procedure) (Amendment) Regulations  
1985

Pharmacy and Poisons Ordinance,  
Chapter 138 :  
Pharmacy and Poisons (Amendment)  
Regulations 1984 (Commencement)  
Notice 1985  
Poison List (Amendment) Regulations  
1984 (Commencement) Notice 1985

Public Health (Animals and Birds) Ordinance  
Chapter 139 :  
Public Health (Animals and Birds)  
Regulations (Amendment of Second  
Schedule) Notice 1985

TABLE 5 WORK OF STATUTORY COUNCILS - APRIL 1984 TO MARCH 1985

WORK	COUNCIL	MEDICAL		DENTAL		
		Local List	Overseas List	Dentists		Dental Hygienists
				Local List	Overseas List	
Number on the register on 31.3.1985		4 288	496	980	82	59
Number of applications for registration	Registration Provisional Registration (Part II)	352 150	21 -	139 -	15 -	2 -
Number of registrations	Registration Provisional Registration (Part IV of Register)	352 *78	21 -	139 -	15 -	2 -
Number of examinations held	Multiple-Choice Question Paper	*1	-	-	-	-
	Oral	*1	-	-	-	-
	Oral & Practical Written	- *2	- -	76 1	- -	- -
Number of candidates examined	Multiple-Choice Question Paper	*351 *129	- -	- -	- -	- -
	Oral	-	-	-	-	-
	Oral & Practical Written	- *155	- -	147 37	- -	- -
Number of successful candidates	Multiple-Choice Question Paper	*127 *73	- -	- -	- -	- -
	Oral	-	-	-	-	-
	Oral & Practical Written	- *122	- -	41 33	- -	- -
Disciplinary hearings held	No. of hearings	10	-	1	-	-
	No. of persons charged	7	-	1	-	-
Number of removals from register		80	56	28	22	-

Number of Meetings held : Medical Council - 3  
Dental Council - 2  
Licentiate Committee & its Sub-Committees - 15

\* Licentiate Scheme for unregistrable doctors

TABLE 6 WORK OF STATUTORY BOARDS - APRIL 1984 TO MARCH 1985

WORK	BOARD	Nursing							Midwives	Pharmacy & Poisons
		Registered			Enrolled					
		General	Mental	Mentally Sub-normal	Sick Children	General	Mental			
Number on the Register on 31.3.1985		13 391	678	6	1	4 651	352	8 281	520	
Number of applications for registration		681	76	-	-	405	50	372	82	
Number of registrations granted		662	76	-	-	405	50	363	47	
Number of examinations held		3	3	-	-	3	3	4	2	
Number of candidates examined		810	84	-	-	397	45	296	72	
Number of successful candidates		748	58	-	-	364	39	290	16	
Disciplinary hearings held		-	-	-	-	-	-	-	5	
No. of hearings		-	-	-	-	-	-	-	4	
No. of persons charged		-	-	-	-	-	-	-	5	
Appeal hearings held		-	-	-	-	-	-	-	6	
No. of appeals		1	-	-	-	-	-	-	16	
Number of removals from register		-	-	-	-	-	-	-	1	
Number of restoration to register		-	-	-	-	-	-	-	-	

Number of Meetings held : Nursing Board - 3  
Midwives Board - 4  
Pharmacy and Poisons Board - 2  
Poisons Committee - 1

TABLE 6(a) SUPPLEMENTARY MEDICAL PROFESSIONS COUNCIL  
APRIL 1984 TO MARCH 1985

Number of meetings held :-

Supplementary Medical Professions Council	1
Supplementary Medical Professions Council Working Party	-
Medical Laboratory Technicians Board	-
Physiotherapists Board	-
Radiographers Board	-
Occupational Therapists Board	-
Occupational Therapists Board Working Party	-

TABLE 6(b) DETAILS OF LICENCES ISSUED BY THE RADIATION BOARD  
APRIL 1984 TO MARCH 1985

	Irradiating Apparatus		Radioactive Substances
	Possess & Operate	Possess	
Total number of licences remained in force as at 31.3.1985	809	63	554
Number of applications for licences	193	-	121
Number of new licences granted	137	154	159
Number of licences cancelled	76	136	51

TABLE 7 ESTIMATED POPULATION BY AGE GROUP AT MID-1984

Age Group	Male	Female	Total
0	42 500	39 400	81 900
1 - 4	178 000	166 900	344 900
5 - 9	212 700	196 900	409 600
10 - 14	222 200	205 100	427 300
15 - 19	248 500	232 000	480 500
20 - 24	309 000	290 300	599 300
25 - 29	304 600	278 100	582 700
30 - 34	253 300	222 000	475 300
35 - 39	194 400	160 500	354 900
40 - 44	131 800	103 100	234 900
45 - 49	146 900	118 700	265 600
50 - 54	142 900	123 700	266 600
55 - 59	127 800	116 400	244 200
60 - 64	99 200	97 400	196 600
65 - 69	77 200	82 100	159 300
70 - 74	49 000	62 900	111 900
75 - 79	25 600	43 700	69 300
80 & over	16 300	42 900	59 200
Total	2 781 900	2 582 100	5 364 000

TABLE 8 VITAL STATISTICS - HONG KONG (Absolute Number)

Year	Population* (1)	Registered# Live Births (2)	Registered# Deaths (3)	Late Foetal Deaths (Still Births) (4)	Early@ Neo Deaths (5)	Late@ Neo Deaths (6)	Post@ Neo Deaths (7)	Peri-@ Natal Deaths (8)=(4)+(5)	Neo-@ Natal Deaths (9)=(5)+(6)	Infant# Deaths (10)=(5)+(6)+(7)	Maternal Deaths (11)
1956	2 614 600	96 746	19 295	988	1 303	1 039	3 553	2 291	2 342	5 895	88
1957	2 736 300	97 834	19 365	1 245	1 323	1 007	3 106	2 568	2 330	5 436	105
1958	2 854 100	106 624	20 554	1 297	1 413	1 079	3 294	2 710	2 492	5 786	92
1959	2 967 400	104 579	20 250	1 393	1 335	888	2 831	2 728	2 223	5 054	77
1960	3 075 300	110 667	19 146	1 680	1 309	1 003	2 279	2 989	2 312	4 591	55
1961	3 168 100	108 726(110 884)	18 738(19 325)	1 683	1 226	1 054	1 818	2 909	2 280	4 098	50
1962	3 305 200	111 905(112 503)	20 324(20 933)	1 560	1 260	1 109	1 761	2 820	2 369	4 130	54
1963	3 420 900	115 263(114 550)	19 748(20 340)	1 633	1 206	972	1 623	2 839	2 178	3 801	34
1964	3 504 600	108 519(107 625)	18 113(18 657)	1 485	1 115	684	1 071	2 600	1 799	2 870	42
1965	3 597 900	102 195(101 110)	17 621(18 150)	1 363	1 017	537	871	2 380	1 554	2 425	34
1966	3 629 900	92 476 (91 832)	18 700(19 261)	1 246	1 011	407	882	2 257	1 418	2 300	40
1967	3 722 800	88 171 (88 215)	19 644(20 234)	999	958	440	862	1 957	1 398	2 260	27
1968	3 802 700	82 992 (82 685)	19 319(19 444)	832	843	404	664	1 675	1 247	1 911	12
1969	3 863 900	79 329 (82 482)	18 730(19 256)	757	810	373	548	1 567	1 183	1 731	12
1970	3 959 000	77 465 (79 132)	20 763(19 996)	726	734	252	535	1 460	986	1 521	15
1971	4 045 300	76 818 (79 789)	20 253(20 374)	656	716	254	440	1 372	970	1 410(1 415)	11
1972	4 115 700	79 053 (80 344)	21 145(21 397)	736	740	174	466	1 476	914	1 380(1 396)	16
1973	4 212 600	80 147 (82 252)	21 360(21 251)	681	724	157	464	1 405	881	1 345(1 351)	8
1974	4 319 600	81 879 (83 581)	22 050(21 879)	621	717	184	520	1 338	901	1 421(1 407)	13
1975	4 395 800	78 200 (79 790)	21 191(21 597)	565	671	133	369	1 236	804	1 173(1 192)	2
1976	4 443 800	76 342 (78 486)	23 195(22 692)	521	564	127	401	1 085	691	1 092(1 077)	14
1977	4 509 800	78 807 (80 022)	23 459(23 346)	528	565	140	388	1 093	705	1 093(1 081)	13
1978	4 597 000	79 173 (80 957)	22 843(23 830)	431	539	115	280	970	654	934 (956)	5
1979	4 878 600	82 157 (81 975)	26 179(25 125)	389	570	124	398	959	694	1 092(1 011)	7
1980	5 038 500	85 406 (85 290)	25 987(25 008)	483	532	135	341	1 015	667	1 008 (956)	4
1981	5 154 100	87 104 (86 632)	24 978(24 678)	475	471	104	271	946	575	846 (839)	7
1982	5 232 900	86 036 (86 160)	25 460(25 262)	438	482	116	255	920	598	853 (854)	1
1983	5 313 200	82 015 (83 356)	26 485(26 255)	386	465	109	256	851	574	830 (822)	6
1984	5 364 000	77 635 (77 122)	25 580(25 484)	330	393	109	207	723	502	709 (683)	5

\* Based on Population Censuses and By-Censuses results.

# Figures in brackets denote adjusted births and deaths for 1961-1968 and known births and deaths for 1969-1984.

@ Figures adjusted according to computer tabulations for 1976-1984.

TABLE 9 VITAL STATISTICS - HONG KONG (Rate)

Year	Crude* Birth Rate (1)	Crude* Death Rate (2)	Late Foetal Mort (3)	Early# Neo Mort (4)	Late# Neo Mort (5)	Post# Neo Mort (6)	Peri-# Natal Mort (7)	Neo-# Natal Mort (8)=(4)+(5)	Infant* Mort (9)=(4)+(5)+(6)	Maternal Mort (10)
1956	37.0	7.4	10.1	13.5	10.7	36.7	23.4	24.2	60.9	0.90
1957	35.8	7.1	12.6	13.5	10.3	31.8	25.9	23.8	55.6	1.06
1958	37.4	7.2	12.0	13.3	10.1	30.9	25.1	23.4	54.3	0.85
1959	35.2	6.8	13.1	12.8	8.5	27.1	25.7	21.3	48.3	0.73
1960	36.0	6.2	15.0	11.8	9.1	20.6	26.6	20.9	41.5	0.49
1961	34.3 (35.0)	5.9 (6.1)	15.2	11.3	9.7	16.7	26.3	21.0	37.7	0.45
1962	33.9 (34.0)	6.1 (6.3)	13.7	11.3	9.9	15.7	24.9	21.2	36.9	0.48
1963	33.7 (33.5)	5.8 (6.0)	14.0	10.5	8.4	14.1	24.3	18.9	33.0	0.29
1964	31.0 (30.7)	5.2 (5.3)	13.5	10.3	6.3	9.9	23.6	16.6	26.4	0.38
1965	28.4 (28.1)	4.9 (5.0)	13.2	10.0	5.3	8.5	23.0	15.2	23.7	0.33
1966	25.5 (25.3)	5.2 (5.3)	13.3	10.9	4.4	9.5	24.1	15.3	24.9	0.43
1967	23.7 (23.7)	5.3 (5.4)	11.2	10.9	5.0	9.8	21.9	15.9	25.6	0.30
1968	21.8 (21.7)	5.1 (5.1)	9.9	10.2	4.9	8.0	20.0	15.0	23.0	0.14
1969	20.5 (21.3)	4.8 (5.0)	9.5	10.2	4.7	6.9	19.6	14.9	21.8	0.15
1970	19.6 (20.0)	5.2 (5.1)	9.3	9.5	3.3	6.9	18.7	12.7	19.6	0.19
1971	19.0 (19.7)	5.0 (5.0)	8.5	9.3	3.3	5.7	17.7	12.6	18.4 (17.7)	0.14
1972	19.2 (19.5)	5.1 (5.2)	9.2	9.4	2.2	5.9	18.5	11.6	17.5 (17.4)	0.20
1973	19.0 (19.5)	5.1 (5.0)	8.4	9.0	2.0	5.8	17.4	11.0	16.8 (16.4)	0.10
1974	19.0 (19.3)	5.1 (5.1)	7.5	8.8	2.2	6.4	16.2	11.0	17.4 (16.8)	0.16
1975	17.8 (18.2)	4.8 (4.9)	7.2	8.6	1.7	4.7	15.7	10.3	15.0 (14.9)	0.03
1976	17.2 (17.7)	5.2 (5.1)	6.8	7.4	1.7	5.3	14.1	9.1	14.3 (13.7)	0.18
1977	17.5 (17.7)	5.2 (5.2)	6.7	7.2	1.8	4.9	13.8	8.9	13.9 (13.5)	0.16
1978	17.2 (17.6)	5.0 (5.2)	5.4	6.8	1.5	3.5	12.2	8.3	11.8 (11.8)	0.06
1979	16.8 (17.0)	5.4 (5.2)	4.7	6.9	1.5	4.8	11.6	8.4	13.3 (12.3)	0.08
1980	17.0 (17.1)	5.2 (5.0)	5.6	6.2	1.6	4.0	11.8	7.8	11.8 (11.2)	0.05
1981	16.9 (16.9)	4.8 (4.8)	5.4	5.4	1.7	3.1	10.8	6.6	9.7 (9.7)	0.08
1982	16.4 (16.5)	4.9 (4.8)	5.1	5.6	1.3	3.0	10.6	7.0	9.9 (9.9)	0.01
1983	15.4 (15.7)	5.0 (4.9)	4.7	5.7	1.3	3.1	10.3	7.0	10.1 (9.9)	0.07
1984	14.5 (14.4)	4.8 (4.8)	4.2	5.0	1.4	2.7	9.3	6.5	9.1 (8.9)	0.06

Rates : (1) &amp; (2) : per 1 000 population; (4), (5), (6), (8) &amp; (9) : per 1 000 live births; (3), (7) &amp; (10) : per 1 000 total births

# Figures adjusted according to computer tabulations for 1976-1984.

\* Figures in brackets were calculated by using adjusted births &amp; deaths figures for 1961-1968 and known births &amp; deaths for 1969-1984.

TABLE 10 HONG KONG DEATH RATES 1970 TO 1984 (Deaths per 1 000 population)

Rate	Year	1970	1971	1972	1973	1974	1975	1976	1977	1978	1979	1980	1981	1982	1983	1984
Standardised* Death Rate		12.56	11.82	11.83	11.09	10.87	10.29	11.14	10.86	10.13	10.53	9.99	9.23	8.95	8.95	8.27
Crude Death Rate		5.24	5.01	5.14	5.07	5.10	4.82	5.22	5.20	4.97	5.37	5.16	4.85	4.87	4.98	4.77
Age Specific Death Rate																
0		19.86	18.65	17.51	16.58	17.33	14.34	14.31	13.78	11.87	13.06	12.06	9.96	9.65	9.63	8.66
1 - 4		1.18	0.95	0.95	1.07	1.10	0.77	0.84	0.78	0.62	1.01	0.69	0.54	0.42	0.55	0.45
5 - 9		0.45	0.41	0.44	0.39	0.39	0.39	0.41	0.32	0.23	0.34	0.29	0.22	0.24	0.19	0.24
10 - 14		0.42	0.36	0.35	0.38	0.36	0.28	0.32	0.33	0.27	0.30	0.29	0.32	0.26	0.25	0.22
15 - 19		0.71	0.59	0.65	0.65	0.54	0.45	0.57	0.46	0.37	0.51	0.47	0.40	0.40	0.39	0.32
20 - 24		1.06	0.87	0.99	0.98	0.95	0.74	0.80	0.73	0.61	0.87	0.81	0.59	0.58	0.56	0.49
25 - 29		1.27	1.26	1.12	1.37	1.18	0.91	1.02	1.01	0.78	1.12	1.00	0.81	0.72	0.61	0.59
30 - 34		1.75	1.54	1.49	1.66	1.73	1.24	1.60	1.17	1.11	1.30	1.25	1.02	0.93	0.78	0.81
35 - 39		2.19	2.08	2.13	2.03	1.81	1.61	1.84	1.87	1.56	1.73	1.65	1.40	1.31	1.19	1.00
40 - 44		3.51	3.28	3.22	3.20	3.08	2.89	2.88	2.80	2.23	2.73	2.39	2.29	2.39	2.16	2.05
45 - 49		5.35	4.73	4.82	4.66	4.59	4.14	4.65	4.32	3.93	4.37	4.11	3.83	3.71	3.34	3.31
50 - 54		8.14	8.07	7.42	7.90	7.35	6.83	7.12	6.48	6.66	6.65	6.23	5.92	6.05	5.94	5.52
55 - 59		14.37	12.67	10.57	11.36	10.98	10.91	10.97	10.79	10.24	10.87	10.72	9.57	9.20	9.28	8.53
60 - 64		20.45	19.40	19.99	19.71	18.70	17.15	18.10	17.94	15.83	16.59	15.32	14.80	15.16	15.57	14.58
65 - 69		30.51	28.64	27.66	26.47	26.55	25.92	28.12	27.80	26.14	26.92	25.47	23.57	22.48	22.62	21.39
70 - 74		42.82	41.67	41.75	38.69	38.69	36.41	39.99	38.18	37.54	38.06	36.01	34.35	34.57	36.62	34.52
75 - 79		66.91	61.65	60.57	53.53	53.54	53.73	61.01	57.98	53.26	56.12	53.69	51.49	48.92	47.07	45.34
80+		110.43	106.41	111.74	104.89	103.62	99.87	106.01	109.82	103.92	105.57	102.22	93.98	90.00	91.44	80.51

\*Basing on population figures for England and Wales 1980 (Reference : United Nations Demographic Year-Book 1981)

TABLE 11 MAJOR CAUSES OF INFANT DEATHS 1980 TO 1984

Disease Group	Detailed List No. 9th Revision (1975)	1980	1981	1982	1983	1984
Meningitis	320,322	8	8	15	8	1
Bronchitis	466, 490-491	3	1	3	3	-
Viral pneumonia	480	4	3	4	1	-
Pneumococcal pneumonia	481	2	1	-	-	-
Other bacterial pneumonia	482	1	-	-	-	-
Pneumonia due to other specified organism	483	-	-	-	-	-
Bronchopneumonia, organism unspecified	485	64	29	28	50	35
Pneumonia, organism specified	486	39	34	21	21	14
Gastroenteritis, colitis & other diarrhoeal disease	558, 009	14	13	6	1	-
Congenital anomalies	740-759	249	221	240	254	236
Obstetric complications & birth trauma	761-763, 767	3	6	2	6	2
Intrauterine hypoxia and birth asphyxia	768	113	103	86	73	65
Respiratory distress syndrome	769	161	115	123	107	95
Other respiratory conditions of fetus and newborn	770	69	58	64	71	56
Slow fetal growth and fetal malnutrition	764	-	-	-	-	-
Disorders relating to short gestation and unspecified low birthweight	765	50	82	61	76	43

TABLE 11 (Cont'd)

Disease Group	Detailed List No. 9th Revision (1975)	1980	1981	1982	1983	1984
Fetus or newborn affected by maternal conditions which may be unrelated to present pregnancy	760	-	-	-	-	-
Disorders relating to long gestation and high birthweight	766	-	-	-	-	-
Infections specific to perinatal period	771	16	6	16	20	17
Fetal and neonatal haemorrhage	772	40	38	66	22	28
Haemolytic disease of fetus or newborn due to isoimmunization and other perinatal jaundice	773-774	13	6	3	6	5
Endocrine and metabolic disturbances specific to the fetus and newborn	775	2	1	2	-	1
Haematological disorders of fetus and newborn	776	8	7	9	5	6
Perinatal disorders of digestive system	777	20	6	4	9	9
Conditions involving the integument and temperature regulation of fetus and newborn	778	22	19	27	29	28
Other and ill-defined conditions originating in the perinatal period	779	-	-	-	-	-
Others	Residues of 001-999	107	89	73	68	68
All Causes	001-999	1 008	846	853	830	709

TABLE 12 NEONATAL AND POST NEONATAL DEATHS BY CAUSE 1980 to 1984

Disease Group	Detailed List No. 9th Revision	1980	1981	1982	1983	1984
<u>Neonatal Deaths (Birth - under 4 weeks)</u>						
All causes	001-999	667	575	598	574	502
Congenital abnormalities	740-759	139	127	148	151	164
Short gestation or unspecified low birthweight	765, 769	200	187	179	173	132
Asphyxia and trauma during labour	767-768	113	100	86	76	67
Other specific perinatal disorders (e.g. infections, blood group incompatibilities etc)	760-764, 766, 773-779	64	37	40	48	45
All other causes	Residue of 001-999	151	124	145	126	94
<u>Post Neonatal Deaths (4 weeks - under 1 year)</u>						
All causes	001-999	341	271	255	256	207
Determined in the 'Perinatal Period':						
Congenital abnormalities	740-759	110	94	92	103	72
Short gestation or unspecified low birthweight	765, 769	11	10	5	10	6
Birth trauma, asphyxia; and intra-uterine hypoxia	767-768	2	7	1	2	-
Other perinatal disorder (e.g. infections, haemolytic disease etc)	760-764, 766, 770-779	10	11	20	6	19
Acquired after Birth:						
Neoplasms	140-239	2	3	6	3	3
Sudden unexpected death	798	5	5	4	6	3
Injury and Poisoning	800-999	34	28	11	5	16
Other acquired diseases	001-139, 240-739, 780-797, 799	167	113	116	121	88

TABLE 13 MAJOR CAUSES OF MATERNAL DEATHS 1961, 1974 AND 1980 TO 1984

Detailed list No. 9th (1975) Revision	Pregnancy with abortive outcome other than spontaneous or legally induced abortion	Toxaemia of pregnancy	Haemorrhage of pregnancy & childbirth	Major puerperal infection	Ectopic pregnancy	Others	Total
1961*	4	10	17	2	3	14	50
1974#	-	1	8	-	1	3	13
1980	-	3	1	-	-	-	4
1981	-	1	3	-	1	2	7
1982	-	-	1	-	-	-	1
1983	-	2	2	-	-	2	6
1984	1	-	1	-	3	-	5

\* Data regrouped according to ICD 8th Revision (1965)

# Data regrouped according to ICD 9th Revision (1975)

TABLE 14 PROPORTIONATE MORTALITY BY DISEASE GROUP 1961, 1974 AND 1980 TO 1984  
(As Percentage of Total Deaths)

Disease Group	Detailed List No. 9th Revision	1961*	1974#	1980	1981	1982	1983	1984
Infective and parasitic	001 - 139	16.2	5.8	3.1	3.1	3.1	3.0	3.0
Neoplasms	140 - 239	12.3	21.4	24.8	26.4	26.8	27.3	28.8
Endocrine, nutritional, metabolic, immunity disorders and blood	240 - 289	0.9	1.2	1.5	1.3	0.9	1.0	1.1
Nervous system, sense organs and mental disorders	290 - 389	0.8@	0.9	0.7	0.7	0.8	0.9	0.7
Circulatory system	390 - 459	18.2	25.4	28.9	28.9	29.3	29.3	29.1
Respiratory system	460 - 519	16.3	17.2	15.3	15.8	15.8	16.9	16.5
Digestive system	520 - 579	7.7	5.1	4.3	4.3	4.6	4.3	4.3
Genitourinary system	580 - 629	2.0	2.7	3.8	3.9	4.1	4.0	4.3
Pregnancy, childbirth and puerperium	630 - 676	0.3	0.1	+	+	+	+	+
Skin, subcutaneous tissue and musculo-skeletal system	680 - 739	0.2	0.3	0.2	0.2	0.2	0.2	0.2
Congenital anomalies and conditions originating in the perinatal period	740 - 779	8.8	4.3	3.1	2.8	2.9	2.8	2.5
Symptoms, signs and ill-defined conditions	780 - 799	10.4	7.7	6.3	4.8	4.2	3.9	3.3
Injury and poisoning	800 - 999	5.9	7.9	8.0	7.8	7.3	6.4	6.2
All causes	001 - 999	100.0	100.0	100.0	100.0	100.0	100.0	100.0

@ Excluding Cerebrovascular Disease (formerly Vascular Lesion Affecting Central Nervous System under the Nervous System and Sense Organs) : 7.5% in 1961

# Data regrouped according to I.C.D. 9th Revision (1975)

\* Data regrouped according to I.C.D. 8th Revision (1965)

+ Denote less than 0.05

TABLE 15 THE TEN LEADING CAUSES OF DEATH BY AGE AND SEX 1984

Rank	Cause of Death	Detailed List No. 9th Revision	Sex	Age Group							
				All ages	0	1-4	5-14	15-44	45-64	65+	Unknown
	All causes	001-999	M F X T	14 11 16 25	342 222 4 580	86 70 - 156	100 93 - 193	1 368 644 2 012	5 017 2 282 7 299	7 361 7 818 15 179	18 2 12 32
1	Malignant neoplasms	140-208	M F T	4 2 7	535 812 347	10 16 26	20 22 42	428 223 651	2 163 3 117	1 913 1 594 3 507	- 1 1 1
2	Heart diseases, including hypertensive heart disease	390-429	M F T	2 1 4	095 910 005	1 1 2	6 4 10	64 47 111	631 344 975	1 391 1 512 2 903	1 - - 1
3	Cerebrovascular disease	430-438	M F T	1 1 3	521 709 230	- 1 1	6 5 11	44 27 71	505 297 802	966 1 378 2 344	- - -
4	Pneumonia, all forms	480-486	M F T	945 938 1 883	22 27 49	8 11 19	7 4 11	35 21 56	222 66 288	648 809 1 457	3 - 3
5	Injury and poisoning	800-999	M F T	1 561 1 593	032 51 593	8 13 50	33 39 72	512 183 695	266 129 395	169 187 356	7 - 7
6	Nephritis, nephrotic syndrome and nephrosis	580-589	M F T	480 474 954	- 1 1	- 1 1	1 - 1	47 24 71	145 130 275	287 318 605	- - -

TABLE 15 (Cont'd)

Rank	Cause of Death	Detailed List No. 9th Revision	Sex	Age Group							
				All ages	0	1-4	5-14	15-44	45-64	65+	Unknown
7	Bronchitis, chronic and unspecified, emphysema & asthma	490-493	M F T	430 232 662	- - -	- - -	4 2 6	24 9 33	148 46 194	252 175 427	2 - 2
8	Tuberculosis (including late effects of tuberculosis)	010-018, 137	M F T	325 95 420	1 - 1	- - -	- - -	19 7 26	136 28 164	169 60 229	- - -
9	Certain conditions originating in the perinatal period	760-779	M F X T	197 156 2 355	197 156 2 355	- - - -	- - - -	- - - -	- - - -	- - - -	- - - -
10	Chronic liver diseases and cirrhosis	571	M F T	239 65 304	- - -	- - -	- - -	22 3 25	147 21 168	70 41 111	- - -
	Congenital anomalies	740-759	M F X T	159 111 2 272	136 98 2 236	13 10 - 23	2 - - 2	8 3 - 11	- - - -	- - - -	- - - -
	Diabetes mellitus	250	M F T	92 126 218	- - -	- - -	- - -	3 1 4	29 31 60	60 94 154	- - -
	All other causes	Residue of 001-999	M F X T	2 292 2 033 12 4 337	26 16 - 42	17 17 - 34	21 17 - 38	162 96 - 258	625 236 - 861	1 436 1 650 - 3 086	5 1 12 18

Note : X indicates unknown sex

TABLE 15(a) SUPPLEMENTARY CLASSIFICATION OF EXTERNAL CAUSES OF INJURY AND POISONING 1984

External Cause of Death	Detailed List No. 9th Revision	Sex	Age Group							
			All ages	0	1-4	5-14	15-44	45-64	65+	Unknown
All accidents, poisonings and violence	E800-E999	M	1 033	8	37	33	512	266	170	7
		F	565	11	13	39	184	130	188	-
		T	1 598	19	50	72	696	396	358	7
Transport accidents	E800-E848	M	197	1	6	13	92	42	43	-
		F	122	1	3	15	18	31	54	-
		T	319	2	9	28	110	73	97	-
Accidental poisonings	E850-E869	M	35	-	-	-	20	13	2	-
		F	12	-	-	1	6	5	-	-
		T	47	-	-	1	26	18	2	-
Other accidents, misadventures & adverse effect	E870-E949	M	252	6	28	17	99	62	40	-
		F	98	8	8	16	17	8	41	-
		T	350	14	36	33	116	70	81	-
Suicide and self-inflicted injury	E950-E959	M	302	-	-	-	163	87	50	2
		F	197	-	-	1	75	62	59	-
		T	499	-	-	1	238	149	109	2
Homicide and injury purposely inflicted by other persons	E960-E969	M	63	1	3	2	38	14	3	2
		F	29	1	2	3	9	7	7	-
		T	92	2	5	5	47	21	10	2
Other violence	E970-E999	M	184	-	-	1	100	48	32	3
		F	107	1	-	3	59	17	27	-
		T	291	1	-	4	159	65	59	3

TABLE 16 LEADING CAUSES OF DEATH 1961, 1974 AND 1984 (Ranking According to 1984 Data)

Cause of Death	Number of Deaths		Percentage of Deaths from all causes		Rate per 100 000 population		
	1961*	1974#	1961*	1974#	1961*	1974#	
	1984	1984	1984	1984	1984	1984	
<u>All ages</u>							
All causes	18 738	22 050	25 580	100.0	100.0	591.5	476.9
1. Malignant neoplasms	2 280	4 683	7 347	12.2	21.2	72.0	137.0
2. Heart diseases, including hypertensive heart disease	1 866	3 271	4 005	9.9	14.8	58.9	74.7
3. Cerebrovascular disease	1 401	2 105	3 230	7.5	9.6	44.2	60.2
4. Pneumonia, all forms	2 665	2 563	1 883	14.2	11.6	84.1	35.1
5. Injury and poisoning	1 100	1 748	1 593	5.9	7.9	34.7	29.7
All other causes	9 426	7 680	7 522	50.3	34.9	297.6	140.2
<u>0 years</u>							
All causes	4 098	1 421	709	100.0	100.0	3 840.7	865.7
1. Congenital anomalies	157	327	236	3.8	23.0	147.1	288.2
2. Hypoxia, birth asphyxia & other respiratory conditions	142	157	216	3.4	11.0	133.1	263.7
3. Haemolytic disease of fetus or newborn, perinatal jaundice & other causes of perinatal morbidity	204	82	94	5.0	5.8	191.2	114.8
4. Pneumonia, all forms	1 166	251	49	28.5	17.7	1 092.8	59.8
5. Immaturity	1 142	265	43	27.9	18.6	1 070.3	52.5
All other causes	1 287	339	71	31.4	23.9	1 206.2	86.7

TABLE 16 (Cont'd)

Cause of Death	Number of Deaths			Percentage of Deaths from all causes			Rate per 100 000 population		
	1961*	1974#	1984	1961*	1974#	1984	1961*	1974#	1984
<u>1-4 years</u>									
All causes	1 805	348	156	100.0	100.0	100.0	427.5	110.0	45.2
1. Injury and poisoning	107	96	50	5.9	27.6	32.0	25.3	30.3	14.5
2. Malignant neoplasms	18	23	26	1.0	6.6	16.7	4.3	7.3	4.1
3. Congenital anomalies	14	34	23	0.8	9.8	14.7	3.3	10.7	6.7
4. Pneumonia, all forms	603	81	19	33.4	23.3	12.2	142.8	25.6	5.5
5. Diseases of nervous system	18	21	14	1.0	6.0	9.0	4.3	6.6	7.5
All other causes	1 045	93	24	57.9	26.7	15.4	247.5	29.4	7.0
<u>5-14 years</u>									
All causes	587	380	193	100.0	100.0	100.0	77.7	37.7	23.1
1. Injury and poisoning	177	154	72	30.2	40.5	37.3	23.4	15.3	8.6
2. Malignant neoplasms	40	55	42	6.8	14.5	21.8	5.3	5.5	5.0
3. Diseases of nervous system	29	11	12	4.9	2.9	6.2	3.8	1.1	1.4
4. Pneumonia, all forms	83	38	11	14.1	10.0	5.7	11.0	3.8	1.3
5. Cerebrovascular disease	4	11	11	0.7	2.9	5.7	0.5	1.1	1.3
All other causes	254	111	45	43.3	29.2	23.3	33.6	11.0	5.4

TABLE 16 (Cont'd)

Cause of Death	Number of Deaths			Percentage of Deaths from all causes			Rate per 100 000 population		
	1961*	1974#	1984	1961*	1974#	1984	1961*	1974#	1984
<u>15-44 years</u>									
All causes	2 665	2 590	2 012	100.0	100.0	100.0	201.6	135.6	73.8
1. Injury and poisoning	465	748	695	17.4	28.9	34.6	35.2	39.2	25.5
2. Malignant neoplasms	512	638	651	19.2	24.6	32.4	38.7	33.4	23.9
3. Heart diseases, including hypertensive heart disease	246	178	111	9.2	6.9	5.5	18.6	9.3	4.1
4. Cerebrovascular Diseases	74	81	71	2.8	3.1	3.5	5.6	4.2	2.6
5. Nephritis, nephrotic syndrome and nephrosis	75	92	71	2.8	3.6	3.5	5.7	4.8	2.6
All other causes	1 293	853	413	48.6	32.9	20.5	97.8	44.7	15.1
<u>45-64 years</u>									
All causes	5 041	7 265	7 299	100.0	100.0	100.0	1 089.9	932.8	750.2
1. Malignant neoplasms	1 204	2 445	3 117	23.9	33.7	42.7	260.3	313.9	320.3
2. Heart diseases, including hypertensive heart disease	762	1 084	975	15.1	14.9	13.4	164.8	139.2	100.2
3. Cerebrovascular disease	569	664	802	11.3	9.1	11.0	123.0	85.3	82.4
4. Injury and poisoning	216	467	395	4.3	6.4	5.4	46.7	60.0	40.6
5. Pneumonia, all forms	278	537	288	5.5	7.4	3.9	60.1	69.0	29.6
All other causes	2 012	2 068	1 722	39.9	28.5	23.6	435.0	265.5	177.0

TABLE 16 (Cont'd)

Cause of Death	Number of Deaths			Percentage of Deaths from all causes			Rate per 100 000 population		
	1961*	1974#	1984	1961*	1974#	1984	1961*	1974#	1984
	65-years and over								
All causes	4 524	10 012	15 179	100.0	100.0	100.0	4 519.5	4 471.6	3 797.6
1. Malignant neoplasms	503	1 515	3 507	11.1	15.1	23.1	502.5	676.6	877.4
2. Heart diseases, including hypertensive heart disease	817	1 978	2 903	18.1	19.8	19.1	816.2	883.4	726.3
3. Cerebrovascular disease	747	1 333	2 344	16.5	13.3	15.4	746.3	595.4	586.4
4. Pneumonia, all forms	435	1 531	1 457	9.6	15.3	9.6	434.6	683.8	364.5
5. Nephritis, nephrotic syndrome and nephrosis	88	214	605	1.9	2.1	4.0	87.9	95.6	151.4
All other causes	1 934	3 441	4 363	42.8	34.4	28.8	1 932.1	1 536.8	1 091.6

\* Data regrouped according to ICD 8th Revision (1965)

# Data regrouped according to ICD 9th Revision (1975)

TABLE 17 NUMBER OF CANCER DEATHS BY AGE AND SEX 1984

T-List	Detailed List Number 9th Revision	Cause Group	Sex	All Ages	0-9	10-	20-	30-	35-	40-	45-	50-	55-	60-	65-	70-	75+	Unk
T080 (part)	147	Malignant neoplasm of nasopharynx	M F	346 103	- -	3 -	7 2	16 4	28 11	27 14	47 16	58 4	62 17	51 9	21 16	16 5	10 5	- -
T090	150	Malignant neoplasm of oesophagus	M F	278 60	- -	- -	- -	- -	1 -	13 -	22 1	34 2	40 5	60 4	46 14	35 9	27 25	- -
T091	151	Malignant neoplasm of stomach	M F	284 164	- -	- -	2 5	1 6	5 3	10 3	16 7	20 17	38 13	51 18	48 22	52 21	41 49	- -
T093	153	Malignant neoplasm of colon	M F	229 207	- -	- -	5 5	4 4	4 4	2 3	11 3	25 11	18 24	37 26	40 30	29 29	54 68	- -
T094	154	Malignant neoplasm of rectum, sigmoid junction and anus	M F	160 114	- -	- -	4 1	4 1	6 2	5 1	9 5	23 8	17 11	22 12	23 19	27 18	20 36	- -
T095	155	Malignant neoplasm of liver and intrahepatic bile ducts	M F	780 212	1 -	3 1	18 3	15 2	21 2	48 4	77 8	88 13	136 27	131 27	99 30	76 44	67 51	- -
T096	157	Malignant neoplasm of pancreas	M F	99 78	- -	- -	- -	1 2	1 1	- 1	3 1	10 5	15 5	19 10	22 10	12 18	16 25	- -
T100	161	Malignant neoplasm of larynx	M F	69 6	- -	- -	- -	- -	- -	1 1	1 1	7 -	9 -	19 1	16 1	10 2	7 1	- -
T101	162	Malignant neoplasm of trachea, bronchus and lung	M F	1393 735	1 -	1 -	1 -	10 8	11 2	21 10	46 20	134 33	186 69	258 93	274 117	222 167	228 216	- -

TABLE 17 (Cont'd)

T-List	Detailed List Number 9th Revision	Cause Group	Sex	All Ages	0-9	10-	20-	30-	35-	40-	45-	50-	55-	60-	65-	70-	75+	Unk
T110	170	Malignant neoplasm of bone and articular cartilage	M F	32 28	- 1	7 2	2 -	- -	1 -	- -	2 -	2 1	1 2	5 3	5 4	4 8	3 7	- -
T112	172	Malignant melanoma of skin	M F	7 4	- -	- -	- -	1 -	- -	- -	1 1	1 -	1 1	- -	- -	2 -	1 2	- -
T113	173	Other malignant neoplasm of skin	M F	5 4	- -	- -	- -	- -	- -	- -	- -	- -	- -	1 1	1 1	1 -	3 2	- -
T114	174	Malignant neoplasm of female breast	F	250	-	-	-	7	9	9	27	29	26	29	45	33	36	-
T120	180	Malignant neoplasm of cervix uteri	F	127	-	-	1	4	2	4	13	18	17	23	12	15	18	-
T122	179, 182	Malignant neoplasm of uterus, other and unspecified	F	47	-	-	-	1	1	1	3	6	2	10	9	6	8	-
T123	183	Malignant neoplasm of ovary and other uterine adnexa	F	89	-	-	3	2	4	3	6	13	11	12	7	11	17	-
T124	185	Malignant neoplasm of prostate	M	64	-	-	-	-	-	-	1	1	1	10	17	13	21	-
T125	186	Malignant neoplasm of testis	M	8	-	-	2	2	-	2	-	-	-	1	-	1	-	-

TABLE 17 (Cont'd)

T-List	Detailed List Number 9th Revision	Cause Group	Sex	All Ages	0-9	10-	20-	30-	35-	40-	45-	50-	55-	60-	65-	70-	75+	Unk
T126	188	Malignant neoplasm of bladder	M F	99 43	- -	- -	- -	1 -	1 -	1 -	1 -	3 1	11 -	14 6	21 6	26 8	20 22	- -
T131 (part)	193	Malignant neoplasm of thyroid gland	M F	14 18	- -	1 -	- -	- -	- -	1 -	2 1	3 -	3 2	- 3	4 5	2 3	2 3	- -
T140	201	Hodgkin's disease	M F	9 2	- -	1 -	- -	- -	1 -	- -	1 -	- -	- -	2 -	3 -	1 1	- -	- -
T141 (part)	200, 202	Non-Hodgkin's lymphoma	M F	66 58	1 2	1 2	5 4	3 4	4 4	3 2	1 6	6 3	10 6	11 4	12 6	5 8	4 11	- -
T141 (part)	203	Multiple myeloma and immunoproliferative neoplasms	M F	12 13	- -	- -	- -	1 -	- -	- 1	1 -	1 -	3 2	3 -	1 3	1 3	1 4	- -
T142	204-208	Leukaemia	M F	109 82	8 10	15 9	17 12	2 6	3 4	4 4	7 2	10 1	7 4	12 6	11 7	4 6	9 11	- -
	140-146, 148-149, 152, 156, 158-160, 163-165, 171, 175, 181, 184, 187, 189-192, 194-199	Malignant neoplasm of other and unspecified sites	M F	472 368	12 18	3 4	13 6	7 5	9 4	24 6	23 12	56 26	74 39	71 50	64 45	63 53	53 99	- 1
T080-T142	140-208	All forms of cancer	M F T	4535 2812 7347	23 31 54	35 18 53	76 42 118	68 57 125	96 49 145	161 66 227	272 133 405	482 191 673	632 283 915	777 347 1124	724 408 1132	602 470 1072	587 716 1303	- 1 1

TABLE 18 MAIN CAUSES OF DEATH FROM CANCER IN HONG KONG 1975 TO 1984

CAUSE OF DEATH Detailed List Number 9th Revision	1975#		1976#		1977#		1978#		1979		1980		1981		1982		1983		1984	
	D	R	D	R	D	R	D	R	D	R	D	R	D	R	D	R	D	R	D	R
ALL FORMS OF CANCER (140-208)	M 3022 F 2083	134.6 96.9	M 3188 F 2180	140.2 100.5	M 3396 F 2256	147.2 102.4	M 3597 F 2381	152.9 106.1	M 3774 F 2429	149.6 103.1	M 4001 F 2429	152.3 100.7	M 4214 F 2596	154.5 103.6	M 4539 F 2687	164.3 105.4	M 4535 F 2812	163.0 108.9		
Malignant neoplasm of nasopharynx (147)	M 339 F 120	15.1 5.6	M 334 F 102	14.7 4.7	M 325 F 110	14.1 5.0	M 302 F 120	12.8 5.3	M 360 F 126	14.3 5.3	M 349 F 118	13.3 4.9	M 361 F 121	13.2 4.8	M 370 F 102	13.4 4.0	M 346 F 103	12.4 4.0		
Malignant neoplasm of oesophagus (150)	M 182 F 63	8.1 2.9	M 222 F 75	9.8 3.5	M 200 F 67	8.7 3.0	M 227 F 64	9.6 2.9	M 264 F 66	10.5 2.8	M 287 F 61	10.9 2.5	M 272 F 61	10.0 2.4	M 281 F 78	10.2 3.1	M 278 F 60	10.0 2.3		
Malignant neoplasm of stomach (151)	M 248 F 158	11.0 7.3	M 279 F 156	12.3 7.2	M 281 F 161	12.2 7.3	M 274 F 177	11.6 7.9	M 286 F 167	11.3 7.1	M 295 F 167	11.2 6.9	M 290 F 172	10.6 6.9	M 309 F 212	11.2 8.3	M 284 F 164	10.2 6.4		
Malignant neoplasm of colon (153)	M 121 F 127	5.4 5.9	M 130 F 136	5.7 6.3	M 136 F 114	5.9 5.2	M 150 F 143	6.4 6.4	M 136 F 154	5.4 6.5	M 147 F 161	5.6 6.7	M 187 F 183	6.9 7.3	M 217 F 184	7.9 7.2	M 229 F 207	8.2 8.0		
Malignant neoplasm of rectum, rectosigmoid junction and anus (154)	M 84 F 54	3.7 2.5	M 75 F 73	3.3 3.4	M 87 F 76	3.8 3.5	M 124 F 81	5.3 3.6	M 118 F 107	4.7 4.5	M 103 F 93	3.9 3.9	M 107 F 108	3.9 4.3	M 146 F 108	5.3 4.2	M 160 F 114	5.8 4.4		
Malignant neoplasm of liver and intrahepatic bile ducts (155)	M 606 F 169	27.0 7.9	M 508 F 150	22.3 6.9	M 380 F 125	16.5 5.7	M 650 F 195	27.6 8.7	M 691 F 178	27.4 7.6	M 689 F 204	26.2 8.5	M 689 F 198	25.3 7.9	M 783 F 232	28.3 9.1	M 780 F 212	28.0 8.2		
Malignant neoplasm of trachea, bronchus and lung (162)	M 758 F 474	33.8 22.0	M 803 F 532	35.3 24.5	M 919 F 529	39.8 24.0	M 999 F 562	42.5 25.0	M 1062 F 600	42.1 25.5	M 1223 F 583	46.6 24.2	M 1263 F 699	46.3 27.9	M 1370 F 632	49.6 24.8	M 1393 F 735	50.1 28.5		
Malignant neoplasm of breast (174 & 175)	M 1 F 193	* 9.0	M 3 F 193	0.1 8.9	M 2 F 195	0.1 8.9	M - F 210	- 9.4	M 1 F 205	* 8.7	M 1 F 190	* 7.9	M 2 F 202	0.1 8.1	M 1 F 219	* 8.6	M - F 250	- 9.7		
Malignant neoplasm of cervix uteri (180)	F 145	6.7	F 141	6.5	F 180	8.2	F 124	5.5	F 146	6.2	F 141	5.8	F 108	4.3	F 140	5.5	F 127	4.9		

# Data regrouped according to ICD 9th Revision (1975).

\* Denote less than 0.05.

D - No. of Deaths.

R - Mortality Rate per 100 000 population.

TABLE 19 NEW CASES OF CANCER NOTIFIED TO THE CANCER REGISTRY BY AGE AND SEX 1982

T-List	Detailed List Number 9th Revision	Cause Group	Sex	All Ages	0-9	10-	20-	30-	35-	40-	45-	50-	55-	60-	65-	70-	75+	Unk.
T080 (part)	147	Malignant neoplasm of nasopharynx	M F	732 301	- 2	10 3	38 22	50 31	62 26	87 40	105 29	118 38	84 26	82 29	54 15	19 21	21 18	2 1
T090	150	Malignant neoplasm of oesophagus	M F	433 121	- -	- -	- 2	2 1	6 -	10 1	37 1	57 7	87 15	79 31	62 23	53 16	40 24	- -
T091	151	Malignant neoplasm of stomach	M F	391 246	- -	1 -	14 5	10 6	8 5	10 15	19 9	39 20	47 16	56 36	69 19	68 32	48 83	2 -
T093	153	Malignant neoplasm of colon	M F	349 306	- -	2 -	13 5	6 10	13 6	14 8	24 19	33 22	40 40	55 35	52 41	48 51	49 69	- -
T094	154	Malignant neoplasm of rectum, rectosigmoid junction and anus	M F	305 246	- 1	- 1	8 8	11 8	6 4	10 10	29 14	36 18	37 25	44 41	48 36	43 29	33 51	- -
T095	155	Malignant neoplasm of liver and intrahepatic bile ducts	M F	708 197	1 1	2 1	11 3	17 10	25 3	53 6	78 12	117 20	126 16	104 26	70 30	59 29	39 37	6 3
T096	157	Malignant neoplasm of pancreas	M F	79 65	- -	- 1	2 1	2 1	2 2	4 -	8 1	12 4	9 6	9 8	7 14	9 9	15 18	- -
T100	161	Malignant neoplasm of larynx	M F	197 30	- -	- -	2 -	1 -	2 -	4 -	10 -	32 4	31 5	38 5	37 6	24 2	15 8	1 -
T101	162	Malignant neoplasm of trachea, bronchus and lung	M F	1530 744	- -	4 -	6 10	12 5	14 4	41 21	83 37	204 41	232 79	313 115	277 151	192 111	151 167	1 3

TABLE 19 (Cont'd)

T-List	Detailed List Number 9th Revision	Cause Group	Sex	All Ages	0-9	10-	20-	30-	35-	40-	45-	50-	55-	60-	65-	70-	75+	Unk.
T110	170	Malignant neoplasm of bone and articular cartilage	M F	39 31	2 2	11 6	3 1	2 -	4 -	1 6	2 2	3 -	2 2	1 -	5 5	1 3	2 4	- -
T112	172	Malignant melanoma of skin	M F	23 13	- 1	1 1	3 2	- -	1 1	1 1	2 -	2 1	1 -	5 2	2 1	1 1	5 2	- -
T113	173	Other malignant neoplasm of skin	M F	80 92	- 1	2 2	2 2	3 5	2 1	3 4	6 1	10 6	7 5	10 7	9 12	11 11	15 35	- -
T114	174	Malignant neoplasm of female breast	F	691	-	1	11	32	46	57	87	70	97	82	64	64	75	5
T120	180	Malignant neoplasm of cervix uteri	F	518	-	1	14	16	21	46	50	73	88	84	61	29	30	5
T122	179, 182	Malignant neoplasm of uterus, other and unspecified	F	161	-	-	4	2	7	8	14	29	39	26	9	11	12	-
T123	183	Malignant neoplasm of ovary and other uterine adnexa	F	138	2	2	7	6	5	10	15	18	17	19	18	10	9	-
T124	185	Malignant neoplasm of prostate	M	109	-	-	2	-	1	1	2	2	4	11	22	22	42	-
T125	186	Malignant neoplasm of testis	M	35	5	3	8	4	3	1	3	3	1	3	1	-	-	-

TABLE 19 (Cont'd)

T-List	Detailed List Number 9th Revision	Cause Group	Sex	All Ages	0-9	10-	20-	30-	35-	40-	45-	50-	55-	60-	65-	70-	75+	Unk.
T126	188	Malignant neoplasm of bladder	M F	327 135	- -	1 -	2 -	2 -	10 -	9 3	14 3	28 7	33 5	59 26	59 20	53 27	57 42	1 1
T131 (part)	193	Malignant neoplasm of thyroid gland	M F	36 115	1 -	3 8	5 15	3 8	3 4	1 10	3 13	4 8	3 11	3 14	2 8	2 4	3 11	- 1
T140	201	Hodgkin's disease	M F	22 8	7 -	3 -	2 2	2 -	1 -	- -	1 3	- 1	3 -	2 2	- -	- -	1 -	- -
T141 (part)	200, 202	Non-Hodgkin's lymphoma	M F	179 154	12 4	10 2	10 23	9 7	9 10	12 5	12 9	20 14	17 10	22 22	18 14	18 14	9 18	1 2
T141 (part)	203	Multiple myeloma and immunoproliferative neoplasms	M F	40 33	- -	- -	1 1	- -	2 -	2 -	1 2	6 3	5 2	7 4	4 5	6 9	5 7	1 -
T142	204-208	Leukaemia	M F	205 128	47 20	32 19	42 22	6 9	2 4	4 4	10 6	6 6	14 6	9 6	11 8	10 9	11 9	1 -
	140-146, 148-149, 152, 156, 158-160, 163-165, 171, 175, 181, 184, 187, 189-192, 194-199	Malignant neoplasm of other and unspecified sites	M F	1004 690	23 19	21 7	30 29	8 17	18 18	34 33	70 35	119 63	133 64	145 95	149 82	136 80	111 142	7 6
T080- T142	140-208	All forms of cancer	M F T	6823 5163 11986	98 53 151	104 56 160	204 189 393	150 174 324	194 167 361	302 288 590	519 362 881	851 473 1324	916 574 1490	1057 715 1772	958 642 1600	775 572 1347	672 871 1543	23 27 50

TABLE 20 NEW OVERSEAS CASES OF CANCER DIAGNOSED IN HONG KONG 1982

T-List	Detailed List Number 9th Revision	Cause Group	Sex	All Ages	0-9	10-	20-	30-	35-	40-	45-	50-	55-	60-	65-	70-	75+
T080 (part)	147	Malignant neoplasm of nasopharynx	M	12	-	-	1	3	2	1	2	3	-	-	-	-	-
T090	150	Malignant neoplasm of oesophagus	F	11	-	-	1	1	1	2	3	2	-	-	1	-	-
T100	161	Malignant neoplasm of larynx	M	2	-	-	-	-	-	-	-	-	-	1	-	-	-
T101	162	Malignant neoplasm of trachea, bronchus and lung	M	7	-	-	-	-	-	-	-	2	1	4	-	-	-
T113	173	Other malignant neoplasm of skin	M	1	-	-	-	-	-	-	-	-	-	-	-	-	1
T114	174	Malignant neoplasm of female breast	F	6	-	-	-	1	1	-	-	-	3	1	-	-	-
T120	180	Malignant neoplasm of cervix uteri	F	4	-	-	-	-	-	-	-	3	-	-	-	-	1
T122 (part)	182	Malignant neoplasm of body of uterus	F	2	-	-	-	-	-	-	1	-	-	-	-	-	1
T123	183	Malignant neoplasm of ovary and other uterine adnexa	F	1	-	-	-	-	-	-	-	1	-	-	-	-	-
T131 (part)	193	Malignant neoplasm of thyroid gland	M	1	-	-	-	1	-	-	-	-	-	-	-	-	-
T141 (part)	200	Lymphosarcoma and reticulosarcoma	M	2	-	-	-	-	-	-	-	-	-	-	-	-	1
			F	3	-	-	2	-	1	-	-	-	-	-	-	-	-
			M	3	-	-	1	1	-	-	-	-	-	-	-	-	-
			F	1	-	-	-	-	-	-	-	1	-	-	-	-	-
T080-T142	140-208	All forms of cancer	M	30	-	-	1	5	3	1	2	5	1	5	2	3	2
			F	28	-	-	3	2	3	2	4	7	3	1	1	1	2
			T	58	-	-	4	7	6	3	6	12	4	6	3	3	4

TABLE 21 DEATHS FROM HEART DISEASES BY AGE AND SEX 1984  
(Including Hypertensive Disease)

I-List No.	Cause (with detailed list no.)	Sex	All Ages	0-	10-	20-	30-	35-	40-	45-	50-	55-	60-	65-	70-	75+	Unk
T250	ACUTE RHEUMATIC FEVER (390-392)	M	-	-	-	-	-	-	-	-	-	-	-	-	-	-	-
		F	-	-	-	-	-	-	-	-	-	-	-	-	-	-	-
T251	CHRONIC RHEUMATIC HEART DISEASES (393-398)	M	75	-	4	3	4	3	3	6	10	5	9	9	6	13	-
		F	144	-	1	4	5	9	7	6	17	15	18	19	15	28	-
	Diseases of mitral valve (394)	M	25	-	2	-	4	-	-	3	3	-	4	2	3	4	-
		F	27	-	-	-	1	-	-	1	1	4	4	7	4	5	-
T260	HYPERTENSIVE HEART DISEASES (402, 404)	M	330	-	-	-	-	-	-	8	12	24	48	63	74	100	1
		F	344	-	-	-	-	-	2	5	11	14	35	52	69	156	-
T261	OTHER HYPERTENSIVE DISEASES (401, 403, 405)	M	140	-	-	-	1	3	4	-	7	10	27	28	40	20	-
		F	106	-	1	-	-	-	-	4	5	4	17	18	21	36	-
T270	ACUTE MYOCARDIAL INFARCTION (410)	M	722	-	-	3	-	2	13	22	41	81	106	135	153	166	-
		F	480	-	-	-	1	2	1	1	12	20	47	61	90	245	-
T271	OTHER ISCHAEMIC HEART DISEASES (411-414)	M	497	-	-	-	1	2	1	4	16	39	48	89	112	185	-
		F	545	-	-	-	1	1	-	1	9	18	33	63	101	318	-
T280	DISEASES OF PULMONARY CIRCULATION (415-417)	M	223	-	-	1	-	1	3	3	11	27	33	41	48	55	-
		F	185	-	-	2	-	-	2	1	3	6	26	27	33	85	-
T281	OTHER FORMS OF HEART DISEASES (420-429)	M	108	2	5	6	4	3	-	6	9	9	13	15	12	27	-
		F	106	4	3	4	1	2	1	1	2	4	9	13	9	53	-
T250-T281	ALL FORMS OF HEART DISEASES (390-429)	M	2095	2	9	13	10	14	24	49	103	195	284	380	445	566	1
		F	1910	4	5	10	8	14	13	19	59	81	185	253	338	921	-

TABLE 22 INFECTIOUS DISEASES NOTIFIED 1980 TO 1984

Disease	Cases					Deaths				
	1980	1981	1982	1983	1984	1980	1981	1982	1983	1984
	Amoebiasis	39	48	37	37	29	6	-	2	2
Bacillary Dysentery	437	563	550	479	396	1	3	1	1	-
Cerebrospinal Meningitis & Meningococcal Infections	29	18	16	13	8	3	1	1	1	-
Chickenpox	2 176	1 140	1 621	1 228	2 433	1	-	3	1	3
Cholera	-	3*	8#	-	1	-	-	-	-	-
Diphtheria	2	-	1	-	-	-	-	1	-	-
Enteric Fever : Typhoid	468	482	369	346	317	6	2	-	3	1
Paratyphoid	32	18	23	23	14	-	2	-	-	-
Food Poisoning : Outbreaks	102	175	215	169	233	-	-	-	-	-
(Persons affected)	(754)	(666)	(870)	(642)	(1 340)	1	-	-	1	2
Leprosy	60	55	57	38	32	-	2	1	-	-
Malaria	49	62	80	125	113	1	-	-	-	-
Measles	1 669	249	1 863	888	678	5	-	5	2	2
Ophthalmia Neonatorum	1	5	4	1	6	-	-	-	-	-
Poliomyelitis	2	3	-	1	-	-	1	-	-	-
Puerperal Fever	2	2	-	-	-	-	-	-	-	-
Rabies (Human)	2	1	-	-	2*	2	1	-	-	2
Scarlet Fever	18	3	4	3	5	-	-	-	-	-
Tuberculosis	8 065	7 729	7 527	7 301	7 843	551	489	454	446	420
Typhus (Urban)	-	-	-	-	1*	-	-	-	-	-
Typhus (Scrub)	5	6	5	3	6	-	-	-	-	-
Viral Hepatitis	1 554	1 738	1 814	1 783	1 780	38	26	42	28	12
Whooping Cough	12	2	1	-	18	-	-	-	-	-
Total	14 724	12 302	14 195	12 438	13 915	615	527	510	485	443

Remarks : No case of smallpox, plague, epidemic louse-borne typhus, yellow fever or relapsing fever was reported during the specified years.

\* Imported cases

# Including 5 imported cases

TABLE 23 NOTIFICATION AND DEATH RATES OF CERTAIN INFECTIOUS DISEASES 1980 TO 1984

Disease	Notification Rate (per 100 000 population)					Death Rate (per million population)				
	1980#	1981	1982	1983	1984	1980#	1981	1982	1983	1984
	Amoebiasis	0.77	0.93	0.71	0.70	0.54	1.19	-	0.38	0.38
Bacillary Dysentery	8.67	10.92	10.51	9.02	7.38	0.20	0.58	0.19	0.19	-
Cerebrospinal Meningitis & Meningococcal Infections	0.58	0.35	0.31	0.24	0.15	0.60	0.19	0.19	0.19	-
Diphtheria	0.04	-	0.02	-	-	-	-	0.19	-	-
Enteric Fever (Typhoid & Paratyphoid)	9.92	9.70	7.49	6.94	6.17	1.19	0.78	-	0.56	0.19
Measles	33.12	4.83	35.60	16.71	12.64	0.99	-	0.96	0.38	0.37
Tuberculosis	160.07	149.96	143.84	137.41	146.22	109.36	94.88	86.76	83.94	78.30
Viral Hepatitis	30.84	33.72	34.67	33.56	33.18	7.54	5.04	8.03	5.27	2.24

# Adjusted according to revised population figures based on the 1981 Census.

TABLE 24 PRINCIPAL INFECTIOUS DISEASES NOTIFIED BY AGE AND SEX 1984

Age Group	Tuberculosis		Viral Hepatitis		Enteric Fever		Bacillary Dysentery	
	M	F	M	F	M	F	M	F
0 - 4	38	23	19	12	9	10	57	38
5 - 9	29	20	49	50	17	21	41	25
10 - 14	29	51	95	69	15	7	14	22
15 - 19	320	278	156	98	15	12	17	13
20 - 24	649	515	255	132	42	39	14	23
25 - 29	683	411	252	97	26	26	11	11
30 - 34	446	236	129	36	16	17	9	8
35 - 39	311	142	77	23	5	5	6	4
40 - 44	293	86	42	13	5	4	5	2
45 - 49	363	79	37	16	1	3	4	5
50 - 54	440	84	31	11	6	3	10	6
55 - 59	478	92	16	8	2	4	2	5
60 - 64	467	127	16	6	3	2	3	8
65 - 69	372	97	10	4	1	4	4	4
70 - 74	257	89	4	2	-	2	6	8
75 & over	204	128	3	7	2	6	2	7
Unknown	4	2	3	2	-	1	2	-
Total	5 383	2 460	1 194	586	165	166	207	189
	7 843		1 780		331		396	

TABLE 25 MALARIA 1980 TO 1984

Cases Notified

Year	Imported	Induced	Indigenous	Relapsing	Total Cases
1980	45	1	1	2	49
1981	61	-	1	-	62
1982	77	2	1	-	80
1983	94	1	30	-	125
1984	101	-	10	2	113

Note :

- (1) All imported relapsing cases are grouped under 'imported cases'.  
 (2) Congenital and blood transfusion cases are grouped under 'induced cases'.

Identification of Parasites

Year	P. Vivax	P. Falci- parum	P. Malariae	P. Ovale	Mixed Infection	Species Undetermined	Total
1980	30	6	5	-	1	7	49
1981	47	7	5	-	-	3	62
1982	69	7	3	-	-	1	80
1983	103	9	6	-	-	7	125
1984	92	12	3	1	2	3	113

TABLE 26 PROPHYLACTIC IMMUNIZATIONS 1980 TO 1984

Immunizations	1980	1981	1982	1983	1984
Smallpox	21 686	1 676	1 041	578	229
Cholera	21 881	7 870	8 053	5 887	5 595
Diphtheria/Pertussis/Tetanus	225 090	251 384	267 477	267 365	263 317
Diphtheria/Tetanus	77 252	102 954	186 054	147 262	177 964
Typhoid					
1st Dose	23 840	25 999	8 258	829	1 180
2nd Dose	3 856	3 687	1 168	63	102
Booster Dose	37 651	40 508	12 663	1 097	720
Tuberculosis (BCG)					
Infant	86 305	87 694	86 562	84 186	78 389
Others	47 808	51 208	57 213	72 050	52 622
Poliomyelitis					
Type I for Newborn	82 525	84 094	83 823	81 528	76 096
1st Dose - Trivalent	76 246	80 750	78 844	75 670	70 608
2nd Dose - Trivalent	71 540	76 501	79 586	77 768	74 679
Booster Dose - Trivalent	135 890	131 835	229 322	193 452	224 226
Measles	59 023	65 022	70 919	76 211	74 788
Rubella	46 336	35 763	28 474	41 662	44 079

TABLE 27 TUBERCULOSIS MORTALITY 1961, 1974 AND 1980 TO 1984

Year	Total Deaths from Tuberculosis	Tuberculosis Death Rate per 100 000 Population	Tuberculosis Deaths as percentage of total registered deaths	Average Age at death from Tuberculosis
1961	1 907	60.2	10.2	43
1974	974	22.5	4.4	58
1980	551	10.9	2.1	62
1981	489	9.5	2.0	63
1982	454	8.7	1.8	63
1983	446	8.4	1.7	63
1984	420	7.8	1.6	64

TABLE 28 TUBERCULOSIS IN CHILDHOOD 1961, 1974 AND 1980 TO 1984

Year	Percentage* of newborns receiving BCG	Percentage of Tuberculosis Deaths under 5 years	Percentage of Tuberculosis Deaths under 1 year	Infantile Mortality from Tuberculosis (per 1 000 births)
1961	77.77	11.48	2.62	0.46
1974	95.83	0.82	0.21	0.02
1980	99.54@	0.73	0.18	0.01
1981	99.53	0.41	-	-
1982	98.94	0.22	-	-
1983	99.41	0.45	-	-
1984	99.91	0.24	0.24	0.01

\* Percentage of newborns based on registered birth figures in 1961 and based on known birth figures since 1970.

@ Figures adjusted after 1981 Census.

TABLE 29 TUBERCULOSIS NOTIFICATIONS 1961, 1974 AND 1980 TO 1984

Year	Government Chest Clinics	Other Government Institutions	Tung Wah Group Hospitals	Other Non- Government Institutions & Private Sources	Total	Notification Rate per 100 000 population
1961	8 957	2 056	947	624	12 584	397.21
1974	5 522	397	323	2 078	8 320	192.61
1980	5 228	584	252	2 001	8 065	160.07
1981	4 936	472	328	1 993	7 729	149.96
1982	4 663	594	314	1 956	7 527	143.84
1983	4 509	634	385	1 773	7 301	137.41
1984	5 196	506	319	1 822	7 843	146.22

TABLE 30 WORK OF TUBERCULOSIS AND CHEST SERVICE 1984

Total attendances	766 263
Total patients attending (old & new)	105 902
Number of new patients	59 532
<u>Classification of new patients</u>	
I) NSD <sup>#</sup> & Unknown	33 474(56.23)
II) Diseases other than tuberculosis	12 089(20.31)
III) Non-respiratory tuberculosis	484 (0.81)
a) Meninges	9(0.01)
b) Bones and joints	52(0.09)
c) Others	423(0.71)
IV) Respiratory tuberculosis	
a) Not active and unknown activity	7 214(12.12)
b) Active	6 057(10.17)
i) By bacteriology and extent	
Negative A1	2 642(4.44)
A2	464(0.78)
A3	72(0.12)
Positive B1	1 244(2.10)
B2	949(1.59)
B3	398(0.67)
Incomplete O1	217(0.36)
O2	56(0.09)
O3	10(0.02)
ii) By previous history and treatment	
No previous history of tuberculosis	5 403(9.08)
Previously diagnosed, no treatment	13(0.02)
Previously diagnosed, with treatment	580(0.97)
Previous history not known	61(0.10)
Total with examination completed	59 318(99.64)

Note : Figures in brackets denote percent of total new patients

# Nil of significance detected

TABLE 31 EXAMINATION OF NEW CONTACTS OF TUBERCULOSIS PATIENTS 1984

Number of patients listed	8 684
Number of contacts listed	23 031
(a) Number of children with negative tuberculin/tine*	1 335
Number of children given BCG	1 321
(b) Number of contacts X-rayed	16 782 (100.00%)
<u>Results</u>	
NSD# & Unknown	15 741 (93.80%)
Diseases other than TB	199 (1.19%)
Respiratory TB	
Active A (negative by bacteriology)	132 (0.79%)
B (positive by bacteriology)	51 (0.30%)
O (incomplete investigation)	25 (0.15%)
Not active	587 (3.50%)
Non-respiratory TB	16 (0.09%)
Result not yet known	31 (0.18%)

# Nil of significance detected

\* for NT Chest Clinics only

TABLE 32 ANNUAL ATTENDANCES AND TREND OF VENEREAL DISEASES 1975 TO 1984

NEW ATTENDANCES	1975	1976	1977	1978	1979	1980	1981	1982	1983	1984
<b>VENEREAL DISEASES</b>										
Syphilis	1 439	1 134	1 101	1 244	1 130	1 092	970	830	699	649
Non-congenital										
Primary	66	179	79	83	37	102	109	94	70	36
Secondary	28	17	12	17	14	36	37	20	29	13
Early Latent	537	276	250	258	282	239	188	130	149	150
Late Latent	724	582	678	783	706	663	588	553	428	421
All Others	40	38	27	9	15	18	13	12	10	22
Congenital										
Under 1 year	3	13	20	27	22	6	-	-	2	1
Over 1 year	41	29	35	67	54	28	35	21	11	6
Gonorrhoea	4 372	3 279	2 115	2 052	2 761	2 629	3 362	4 546	4 275	4 967
Non-specific Genital Infection	845*	1 095*	909*	847*	974*	960*	1 492	2 091	1 685	1 767
Chancroid	157	113	197	234	163	357	439	310	261	422
Lymphogranuloma Venereum	54	33	36	48	36	76	75	31	31	25
Herpes Genitalis+	-	-	-	-	-	267	268	414	497	351
Genital Warts+	-	-	-	-	-	456	673	971	1 368	1 563
Pediculosis Pubis+	-	-	-	-	-	66	42	86	103	137
Scabies#	-	-	-	-	-	-	-	229	390	245
Others (unclassified)	1 128	961	660	176	324	399	280	298	207	227
<b>ALL VENEREAL DISEASES</b>	7 995	6 615	5 018	4 601	5 388	6 302	7 601	9 806	9 516	10 353
<b>NON-VENEREAL DISEASES</b>	7 709	6 693	5 906	5 316	4 900	6 250	6 643	6 820	7 701	8 273
<b>SKIN DISEASES</b>	20 807	16 438	15 982	16 907	16 392	15 470	14 964	16 960	17 664	14 922
<b>NEW ATTENDANCES (ALL TYPES)</b>	36 511	29 746	26 906	26 824	26 680	28 022	29 208	33 586	34 881	33 548
<b>TOTAL ATTENDANCES (ALL TYPES)</b>	178 277	154 871	139 711	138 858	142 691	144 641	150 852	166 933	173 957	176 024

\* Male cases only, female cases classified under non-veneraeal diseases

+ Formerly classified as skin diseases

# Formerly classified as skin diseases; partly classified as venereal diseases w.e.f. 1982

TABLE 33 VDRL EXAMINATIONS IN EXPECTANT MOTHERS 1980 TO 1984

Examinations	1980*	1981*	1982*	1983	1984
Venous Blood	71 481	85 837	74 430	83 122	82 228
Positive	417	294	276	283	438
% Positive	0.58	0.34	0.37	0.34	0.53

\* Excluding examinations done in AHML Nethersole Hospital, Caritas Medical Centre, Our Lady of Maryknoll Hospital, United Christian Hospital, Pok Oi Hospital and Yan Chai Hospital.

TABLE 34 LEPROSY CASES 1975 TO 1984

## I) Incidence of Leprosy

Year	New Cases		Imported Cases	New Cases Admitted to Lai Chi Kok Hospital
	No.#	Incidence Rate* per 100 000 population		
1975	78	1.8	1	27
1976	76	1.7	2	34
1977	73	1.6	1	24
1978	74	1.6	5	23
1979	70	1.4	7	20
1980	60	1.2	4	18
1981	55	1.1	5	10
1982	57	1.1	5	14
1983	38	0.7	4	6
1984	32	0.6	-	4

\* Rates for the years 1977 to 1980 based on revised population estimates after 1981 Census.

# Including imported cases.

## II) Number of New Cases by Age 1984

Age Group	No. of cases
Under 1	-
1 - 4	-
5 - 9	-
10 - 14	-
15 - 19	-
20 - 24	5
25 - 29	3
30 - 34	6
35 - 39	2
40 - 44	1
45 - 49	-
50 - 54	1
55 - 59	2
60 & over	12
Total	32

TABLE 35 ANALYSIS OF NEW DERMATOLOGICAL CASES PRESENTING AT CLINICS 1984

Dermatological Condition	No. of New Cases	Dermatological Condition	No. of New Cases
Acne	1 300	Nevi (all types)	89
Alopecia	244	Pediculosis	1
Angioedema	14	Pemphigus	28
Carcinoma	24	Paronychia	34
Contact dermatitis	849	Pityriasis rosea	251
Dermatitis exfoliative	10	Pityriasis alba	170
Dermatitis herpetiformis	2	Pruritus	676
Dermatomyositis	14	Psoriasis	914
Drug eruption	85	Purpura	4
Eczema (all types)	5 808	Pyoderma	302
Epidermolysis bullosa	1	Raynaud's phenomema	-
Erythema multiforme	28	Rosacea	119
Erythema nodosum	13	Scabies	1 173
Granuloma	18	Scleroderma	-
Herpes simplex	55	Tinea (all types)	2 663
Herpes zoster	175	TB Cutis	7
Ichthyosis	19	Tumors, benign	-
Keloid	74	Ulcer, varicose	45
Keratosis (all types)	59	Urticaria	965
Lichen amyloidosis	76	Vasculitis	-
Lichen planus	23	Verruca	1 061
Light sensitivity	1	Vitiligo	265
Lupus (all types)	22	Xanthoma	12
Miliaria	20	Leprosy	-
Molluscum contagiosum	21	Miscellaneous	660
Neurodermatitis	991	TOTAL	19 386
Neurofibromatosis	1		

TABLE 36 DISTRIBUTION OF FAMILY HEALTH CENTRES AS AT 31ST MARCH 1985

Centre	Hong Kong	Kowloon	NT and Islands	Total
<u>Maternal &amp; Child Health</u>				
Full-time				
with Midwifery Service	1	7	2	10
without Midwifery Service	7	7	6	20
Part-time				
with Midwifery Service	-	-	9	9
without Midwifery Service	1	2	2	5
<u>Comprehensive Observation Service</u>				
Full-time	3	14	6	23
Part-time	6	2	13	21
<u>Family Planning</u>				
Full-time	-	2	2	4
Part-time	10	14	19	43

TABLE 37 WORK OF FAMILY HEALTH SERVICE 1983 AND 1984

(Maternal and Child Health)

	1983	1984
<u>Number of Centres (as at 31.12.84)</u>		
Full-time	29	30
Part-time	13	14
<u>Ante-natal Sessions</u>		
Total sessions	4 210	4 204
New attendances	37 739	35 503
Total attendances	257 084	243 778
Average attendance per session	61.07	57.99
Average attendance per person	6.81	6.87
<u>Post-natal Sessions</u>		
Total sessions	1 855	1 590
New attendances	28 667	26 478
Total attendances	29 081	26 851
Percentage presenting with some abnormalities	6.44%	5.42%
<u>Infant Welfare Sessions (0-2 years of age)</u>		
Total sessions	9 207	9 395
New attendances	78 012	72 870
Total attendances	1 062 216	1 127 879
<u>Toddler Welfare Sessions (2-5 years of age)</u>		
Total sessions	1 762	1 745
New attendances	48 737	49 949
Total attendances	138 181	152 692
<u>Percentage of new attendances presenting with some abnormalities (0-5 years of age)</u>	2.75%	2.78%
<u>Home Visits</u>	102 295	105 949

TABLE 38 WORK OF FAMILY HEALTH SERVICE 1983 AND 1984

(Comprehensive Observation Service)

	<u>1983</u>	<u>1984</u>
Number of centres (as at 31.12.84)		
Full-time	23	23
Part-time	19	21
Number of sessions held	13 898	15 599
Number of children examined	125 171	140 357
Number of new cases	62 738	66 818
Total number of developmental screening tests done	163 068	184 226
Number of children found to have defects/disabilities* (including provisional cases)	1 846	2 031
Number of referrals	2 105	2 489

\* Based on notification forms received.

TABLE 39 WORK OF FAMILY HEALTH SERVICE 1983 AND 1984

(Family Planning)

		<u>1983</u>	<u>1984</u>
Number of centres (as at 31.12.84)	Full-time	4	4
	Part-time	42	43
	Total	46	47
Number of sessions provided		7 975	7 972
Number of clients	New	50 532	49 322
	Old	75 677	84 107
	Total	126 209	133 429
Number of attendances		408 810	446 301
Characteristics of new clients			
I. Contraceptive method	Pills	20 972	20 068
	Injections	1 835	1 959
	IUD's	638	726
	Condoms	24 551	23 486
	Other methods	2 536	3 083
	Total	50 532	49 322
II. Age	Under 20	1 484	1 228
	20 - 24	13 697	11 964
	25 - 29	22 235	21 796
	30 - 34	9 899	10 450
	35 - 39	2 400	3 009
	40 - 44	585	621
	45 & over	232	254
	Total	50 532	49 322

Note : New clients refer to

- (1) Clients never attend family planning clinics.
- (2) F.P.A. clients first attend our clinics after the date of take-over.
- (3) Return of clients after pregnancy, advised pregnancy, advised sterilization and referred to hospital.
- (4) Return of non-I.U.D. clients whose date of last visit was over 2 years ago and I.U.D. clients whose date of last visit was over 4 years ago.

TABLE 40 WORK OF OCCUPATIONAL HEALTH DIVISION 1983 AND 1984

	1983	1984
<b>I. Number of Confirmed Occupational Diseases*</b>		
Compressed Air Illness Compression Barotrauma	-	4
Decompression sickness	1 189	609
Type I	2	6
Type II	6	10
Dysbaric osteonecrosis		
Contact dermatitis	18	47
Silicosis	295	232
Mercury poisoning	-	1
Benzene poisoning	-	1
Gas poisoning	233	22
<b>II. Occupational Injuries</b>		
No. of occupational injuries reported	79 204	83 491
No. of accidents requiring notification under Employees' Compensation Ordinance	71 141	81 171
<b>III. Employees' Compensation Case Work</b>		
Total no. of interviews with injured employees	175 081	188 240
Cases assessed by Ordinary Assessment Boards#	3 831	16 044
Cases assessed by Medical Assessment Boards+	18 550	1 181
Cases assessed by Special Assessment Boards@	14	70
Cases assessed by Prostheses and Surgical Appliances Boards@	209	312

\* Figures for 1983 refer to the number of occupational diseases notified under the Factories and Industrial Undertakings Regulations.

# Nursing staff assisted in the preparation and clearance of cases of Ordinary Assessment Boards.

+ Employees' compensation cases occurring before 1.7.83 assessed by Occupational Health Officers.

@ Employees' compensation cases occurring on and after 1.7.83 are assessed by statutory boards with the enactment of the Employees' Compensation (Amendment) Ordinance. Occupational Health Officers sat on Special Assessment Boards and Prostheses and Surgical Appliances Boards.

TABLE 41 ENVIRONMENTAL AND BIOLOGICAL MONITORING AND SURVEY WORK OF OCCUPATIONAL HEALTH DIVISION 1984

<b>I. Field Survey Work</b>	No. of surveys	No. of samples taken
<b>Nature of Survey Work</b>		
<b>(A) Atmospheric monitoring :</b>		
Acetic acid	2	3
Acetone	5	6
Aluminium	1	3
Ammonia	20	35
Asbestos	6	17
Benzene	4	5
Beryllium	1	2
Butyl acetate	4	4
Butyl cellosolve	6	12
Carbon dioxide	3	5
Carbon monoxide	6	12
Chloroform	2	3
Chromic acid mist	40	66
Cyclohexane	1	2
Cyclohexanone	2	4
Diethyl ether	1	1
Dust	188	633
Ethanol	1	1
Ethyl acetate	17	25
Formaldehyde	4	11
Freon	1	4
Gasoline	1	2
Glycol ethers	38	25
Hexane	1	1
Hydrogen chloride	1	1
Hydrogen cyanide	20	32
Hydrogen sulphide	11	42
Isophorone	3	6
Iso-propyl alcohol	4	6
Lead	8	18
Mercury	6	41
Methylene chloride	7	10
Methyl ethyl ketone	13	21
Nitrogen dioxide	5	10
Organic vapours	14	31
Oxygen	6	13
Ozone	24	34
Perchloroethylene	19	33
Styrene	6	9
Sulphuric acid	1	2
Toluene	36	57
Toluene di-isocyanate	1	2
1,1,1-Trichloroethane	21	34
Trichloroethylene	68	103
Vinyl chloride	1	1
Welding fumes	1	2
Xylene	7	7