



DAILY INFORMATION BULLETIN

ISSUED BY GOVERNMENT INFORMATION SERVICES
BEACONSFIELD HOUSE, HONG KONG. TEL.: 842 8777

FRIDAY, JUNE 26, 1992

<u>CONTENTS</u>	<u>PAGE NO.</u>
CONSUMER PRICE INDICES FOR MAY	1
DISCUSSIONS WITH GOVERNOR-DESIGNATE USEFUL -- FS	7
MORE TO GET LEGAL AID BENEFITS	8
TWO ANTI-DRUG RULES EFFECTIVE TODAY	9
KOWLOON WALLED CITY CLEAREES URGED TO LEAVE BY TUESDAY	10
REVISED FEES FOR AFD SERVICES	10
SCHOOLS GIVEN MORE FLEXIBILITY AND ROOM FOR INITIATIVE	12
HK FULLY CO-OPERATES IN DRUG FIGHT	14
PROVISIONAL TRADE FIGURES FOR MAY	16
SURVEY FINDINGS ON MEDIA INFLUENCE ON YOUTH RELEASED	18
TWO BOAT CLUB INSHORE PROJECTS GAZETTED	21
ALBANY ROAD PLAYGROUND TO GET IMPROVEMENTS	22
TENDERS INVITED FOR SEWAGE PUMPING STATION	22
EDUCATION GOALS NEED TRIPARTITE PARTNERSHIP	23
SHEUNG WAN ROADS TO BE CLOSED FOR URBAN RENEWAL	24
GOVT TO CONDUCT HEALTH MANPOWER SURVEY	24
PRE-QUALIFIED TENDERERS INVITED TO BID FOR TWO DEMOLITION WORKS	25
TRIPARTITE EFFORTS TO BOOST CHILD CARE SERVICES	26
NEW TB CASES ON DECLINE	27
BANKING LICENCE REVOKED	28
HONG KONG GOVERNMENT EXCHANGE FUND MONEY MARKET OPERATIONS	28

FRIDAY, JUNE 26, 1992

- 1 -

CONSUMER PRICE INDICES FOR MAY

* * * * *

CONSUMER PRICE INFLATION CONTINUED TO MODERATE LAST MONTH, ACCORDING TO FIGURES RELEASED TODAY (FRIDAY) BY THE CENSUS AND STATISTICS DEPARTMENT.

THE CONSUMER PRICE INDEX (A) WAS 8.8% HIGHER THAN IN MAY LAST YEAR. THIS COMPARED WITH A SLIGHTLY HIGHER FIGURE OF 8.9% IN THE PRECEDING MONTH, AND THE PEAK FIGURE OF 13.9% IN APRIL LAST YEAR.

THE CPI(B) AND THE HANG SENG CPI SHOWED A SIMILAR TREND. IN MAY 1992, THEY WERE HIGHER BY 9.0% AND 9.5% RESPECTIVELY THAN IN MAY LAST YEAR.

THE CORRESPONDING INCREASES IN THE PRECEDING MONTH WERE 9.2% AND 9.7%.

THE COMPOSITE CPI, WHICH WAS COMPILED BASED ON THE COMBINED EXPENDITURE PATTERN OF HOUSEHOLDS COVERED BY THE THREE CPIS, SHOWED AN INCREASE OF 9.1% IN MAY 1992 OVER THE SAME MONTH IN 1991.

THE CORRESPONDING INCREASE IN THE PRECEDING MONTH WAS 9.2%.

THE FINANCIAL SECRETARY, MR HAMISH MACLEOD, WELCOMED THE CONTINUING DOWNWARD TREND IN THE INFLATION FIGURES.

THE LESS RAPID INCREASE IN THE CPIS IN MAY 1992 WAS MAINLY DUE TO THE PRICES OF FRESH VEGETABLES, WHICH SHOWED A MUCH SLOWER YEAR-ON-YEAR RATE OF INCREASE.

COMPARING MAY 1992 WITH MAY 1991, THE PRICES OF ALCOHOLIC DRINKS AND TOBACCO REGISTERED A DECREASE OF 0.8% IN THE CPI(A) AND AN INCREASE OF 2.0% IN THE CPI(B).

RELATIVELY SLOWER INCREASES IN PRICES WERE RECORDED FOR DURABLE GOODS (2.2% IN THE CPI(A) AND 2.3% IN THE CPI(B)); TRANSPORT (5.8% AND 6.0%); FUEL AND LIGHT (6.3% AND 5.9%); MISCELLANEOUS GOODS (7.0% AND 6.5%); FOOD (EXCLUDING MEALS AT RESTAURANT) (7.4% AND 7.1%); AND CLOTHING AND FOOTWEAR (8.2% AND 8.0%).

ON THE OTHER HAND, RELATIVELY FASTER INCREASES IN PRICES WERE RECORDED FOR MEALS AT RESTAURANTS (10.7% IN THE CPI(A) AND 10.6% IN THE CPI(B)); HOUSING (11.5% AND 11.8%); AND SERVICES (12.1% AND 11.5%).

COMPARING MAY 1992 WITH APRIL 1992, THE CPI(A) SHOWED LITTLE CHANGE, WHILE THE CPI(B) AND THE HANG SENG CPI INCREASED BY 0.3% AND 1.1% RESPECTIVELY.

THIS COMPARISON WAS, HOWEVER, AFFECTED BY SEASONAL FACTORS. THE RISE WAS LARGELY DUE TO HIGHER RENTS FOR SOME PRIVATE HOUSING UNITS, HIGHER CHARGES FOR MEALS AT RESTAURANTS, AND HIGHER MTR, KCR AND LRT FARES.

/THE EFFECT

FRIDAY, JUNE 26, 1992

- 2 -

THE EFFECT OF THESE PRICE INCREASES WAS NEVERTHELESS OFFSET TO A SIGNIFICANT EXTENT BY THE CHEAPER PRICES OF FRESH VEGETABLES.

FOR THE THREE MONTHS ENDED MAY 1992, THE CPI(A) WAS, ON AVERAGE, HIGHER BY 9.0% THAN IN THE THREE MONTHS ENDED MAY 1991. THE CORRESPONDING FIGURE WAS 9.3% FOR THE CPI(B).

FOR THE PERIOD OF JANUARY TO MAY 1992, BOTH THE CPI(A) AND CPI(B) WERE, ON AVERAGE, HIGHER BY 9.6% THAN IN THE CORRESPONDING PERIOD OF 1991.

FOR THE 12 MONTHS ENDED MAY 1992, THE CPI(A) WAS, ON AVERAGE, HIGHER BY 10.8% THAN IN THE PRECEDING 12-MONTH PERIOD. THE CORRESPONDING FIGURE WAS 10.6% FOR THE CPI(B).

ON A SEASONALLY ADJUSTED BASIS, BOTH THE CPI(A) AND CPI(B) INCREASED AT AN AVERAGE RATE OF 0.8% PER MONTH DURING THE THREE MONTHS ENDED MAY 1992.

THE CONSUMER PRICE INDEX REPORT

MORE DETAILS ARE GIVEN IN THE "CONSUMER PRICE INDEX REPORT" FOR MAY 1992, WHICH IS AVAILABLE AT \$9 A COPY FROM THE GOVERNMENT PUBLICATIONS SALES CENTRE, GENERAL POST OFFICE BUILDING, GROUND FLOOR, CONNAUGHT PLACE, HONG KONG; OR FROM THE CENSUS AND STATISTICS DEPARTMENT, 19TH FLOOR, WANCHAI TOWER I, 12 HARBOUR ROAD, WAN CHAI, HONG KONG; OR FROM THE INFORMATION SERVICES DEPARTMENT, FRENCH MISSION BUILDING, 1 BATTERY PATH, HONG KONG FOR LOCAL AND OVERSEAS MAILINGS.

FOR ENQUIRIES ABOUT THE INDICES, PLEASE TELEPHONE THE CONSUMER PRICE INDEX SECTION OF THE CENSUS AND STATISTICS DEPARTMENT ON 805 6403.

DETAILS REGARDING THE HANG SENG CPI ARE CONTAINED IN THE HANG SENG CPI REPORT ISSUED BY THE ECONOMIC RESEARCH DEPARTMENT OF HANG SENG BANK LTD.

/Table 1

Table 1 Consumer Price Indices and Rates of Increase for May 1992
(Oct. 89 - Sep. 90 = 100)

Component	CPI(A)		CPI(B)		Hang Seng CPI		Composite CPI	
	Index for May 92	% change over May 91	Index for May 92	% change over May 91	Index for May 92	% change over May 91	Index for May 92	% change over May 91
Food	122.7	+9.1	123.8	+9.2	122.6	+9.6	123.1	+9.2
Meals bought away from home	128.5	+10.7	128.4	+10.6	124.8	+10.9	127.7	+10.7
Food, excluding meals bought away from home	117.0	+7.4	117.5	+7.1	118.8	+7.2	117.5	+7.3
Housing	129.1	+11.5	128.6	+11.8	129.9	+11.8	129.2	+11.7
Fuel and light	115.7	+6.3	115.1	+5.9	114.9	+5.0	115.3	+5.9
Alcoholic drinks and tobacco	161.2	-0.8	153.3	+2.0	149.7	+3.5	156.8	+0.7
Clothing and footwear	120.5	+8.2	121.5	+8.0	129.1	+11.1	123.9	+9.1
Durable goods	107.2	+2.2	106.9	+2.3	109.4	+3.7	107.8	+2.6
Miscellaneous goods	114.9	+7.0	113.8	+6.5	113.3	+5.8	114.1	+6.5
Transport	124.9	+5.8	124.6	+6.0	125.0	+6.2	124.8	+6.0
Services	127.0	+12.1	125.2	+11.5	121.5	+10.1	124.7	+11.3
All items	124.0	+8.8	123.8	+9.0	124.2	+9.5	124.0	+9.1

The 1989/90-based consumer price indices are based on the expenditure patterns derived from the 1989/90 Household Expenditure Survey. The CPI(A) is based on the expenditure pattern of about 50% of urban households in Hong Kong, which had an average monthly expenditure of \$2,500-\$9,999 a month in 1989/90. The CPI(B) is based on the expenditure pattern of the next 30% of urban households, which had an average monthly expenditure of \$10,000-\$17,499 in the same period. The Hang Seng CPI is based on the expenditure pattern of the next 10% of urban households, which had an average monthly expenditure of \$17,500-\$37,499 in 1989/90.

Whereas the CPI(A), CPI(B) and Hang Seng CPI are based on the expenditure patterns of groups of households with different magnitudes of household expenditure, the Composite CPI is compiled based on the expenditure pattern of all these households taken together. Thus, while the CPI(A), CPI(B) and Hang Seng CPI show the impact of consumer price changes on different groups of households, the Composite CPI shows the impact of consumer price changes on the household sector generally.

Table 2 Consumer Price Indices for October 1990 - May 1992
(Oct. 89 - Sep. 90 = 100)

<u>Year/month</u>	<u>CPI(A)</u>	<u>CPI(B)</u>	<u>Hang Seng CPI</u>	<u>Composite CPI</u>
1990 October	105.8	105.9	106.7	106.1
November	106.5	106.7	107.8	106.9
December	107.4	107.6	108.1	107.7
1991 January	108.3	108.4	108.6	108.4
February	110.3	110.1	110.2	110.2
March	111.9	111.1	110.7	111.3
April	113.9	113.0	112.0	113.1
May	114.0	113.6	113.4	113.7
June	114.6	114.1	113.9	114.2
July	115.4	114.8	113.9	114.8
August	116.0	115.3	114.6	115.4
September	116.8	116.1	115.8	116.3
October	117.2	116.8	117.4	117.1
November	117.7	117.6	118.7	117.9
December	118.1	118.3	118.5	118.3
1992 January	119.7	119.3	119.4	119.5
February	121.8	121.2	121.0	121.4
March	122.5	121.9	121.8	122.1
April	124.0	123.4	122.9	123.5
May	124.0	123.8	124.2	124.0

Chart 1 Year-on-year Rates of Increase in CPI(A)

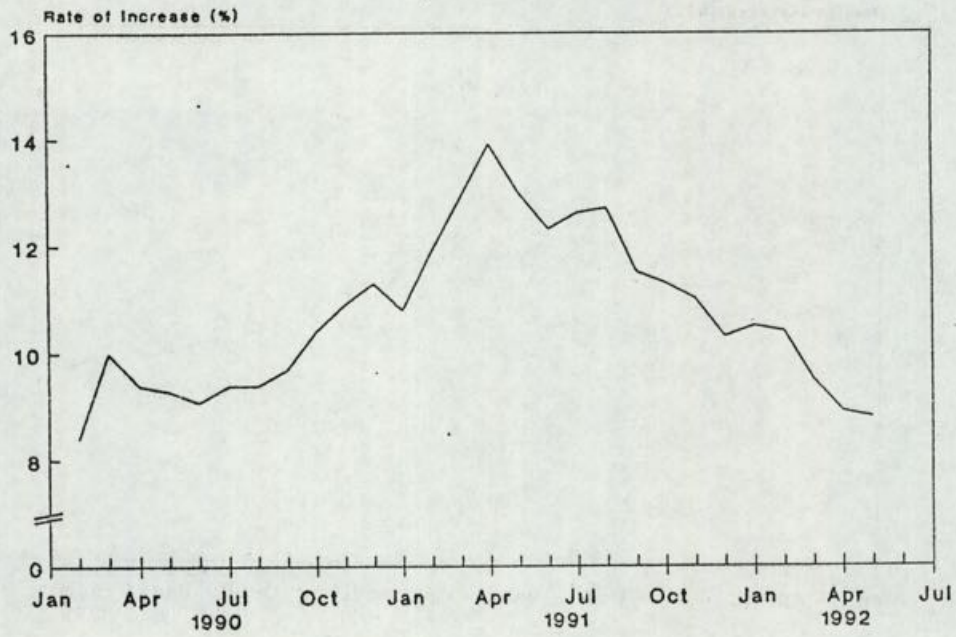
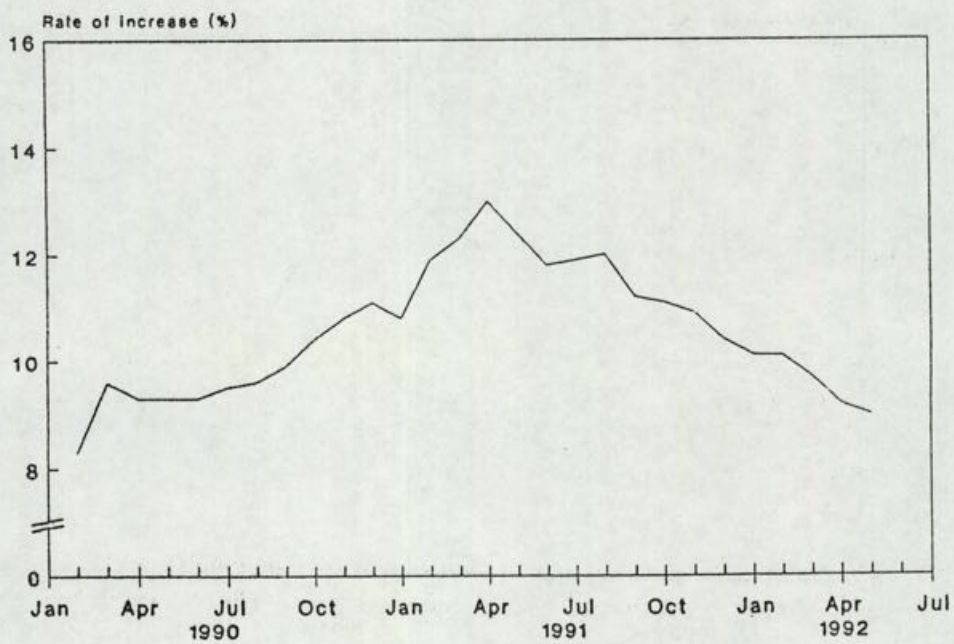


Chart 2 Year-on-year Rates of Increase in CPI(B)



/Chart 3

Chart 3 Year-on-year Rates of Increase in Hang Seng CPI

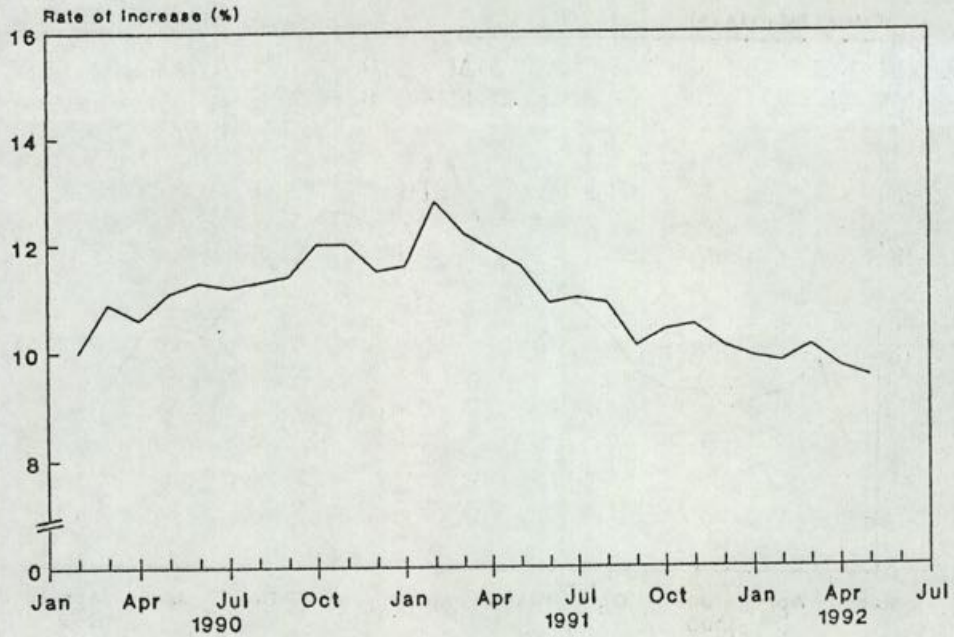
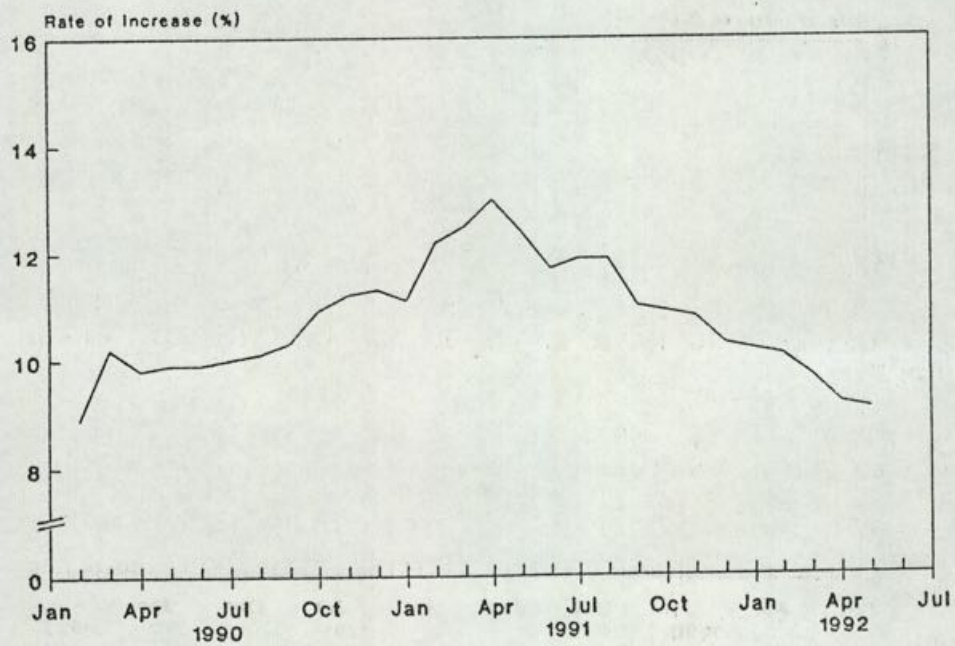


Chart 4 Year-on-year Rates of Increase in Composite CPI



DISCUSSIONS WITH GOVERNOR-DESIGNATE USEFUL -- FS
* * * * *

THE FINANCIAL SECRETARY, MR HAMISH MACLEOD, SAID TODAY (FRIDAY) THAT HE HAD A VERY GOOD TRIP TO LONDON AND HAD VERY THOROUGH DISCUSSIONS WITH THE GOVERNOR-DESIGNATE, MR CHRIS PATTEN, ON MOST OF THE KEY ISSUES.

ASKED BY MEMBERS OF THE MEDIA ON HIS RETURN AT KAI TAK ABOUT HIS MEETINGS WITH MR PATTEN, MR MACLEOD SAID THE GOVERNOR-DESIGNATE WAS WELL INFORMED AND EXTREMELY ENTHUSIASTIC TO GET ON AND GRAPPLE WITH THOSE ISSUES.

"I SPENT MONDAY MORNING WITH HIM AND AGAIN WE RESUMED ON TUESDAY MORNING. SO WE HAD A CHANCE FOR A VERY THOROUGH RUN OVER MOST OF THE AREAS WHICH I COVER".

MR MACLEOD SAID MR PATTEN HAD ALREADY READ BRIEFS FROM HONG KONG AND THEY WERE THEREFORE ABLE TO GET STRAIGHT INTO THE HEART OF ISSUES SUCH AS INFLATION, THE AIRPORT CORE PROGRAMME, HIS EXPERIENCES IN THE LAST BUDGET AND THOUGHTS ABOUT HOW TO HANDLE THE NEXT BUDGET.

MR MACLEOD SAID HE FOUND SUCH CLEAR, DIRECT CONVERSATIONS BETWEEN THE TWO OF THEM EXTREMELY USEFUL.

ASKED TO COMMENT ON THE INFLATION FIGURE FOR THE MONTH OF MAY, MR MACLEOD SAID IT WAS SLIGHTLY DOWN FROM 8.9 PER CENT TO 8.8 PER CENT AND HE WAS ENCOURAGED THAT IT WAS STILL GOING DOWN.

"WE HAD A VERY CONSIDERABLE DOWNWARD TREND SINCE THE 13.9 PER CENT WHICH WAS ONLY ABOUT A YEAR AGO -- APRIL 1991. BUT I AM NOT OF COURSE AT ALL SAYING THAT THE PROBLEM IS OVER. CLEARLY WE ARE CONCERNED THAT IT IS STILL HIGH."

HE SAID IN PARTICULAR, THE GOVERNMENT WOULD KEEP A WATCH ON DOMESTIC PROPERTY PRICES AND THE ECONOMY IN GENERAL.

ASKED WHETHER THERE WAS CONCERN IN LONDON ABOUT THE AIRPORT PROJECT, MR MACLEOD SAID: "CERTAINLY THERE'S A LOT OF INTEREST IN THE AIRPORT PROJECT AND HOW SOON WE CAN GET ON WITH THE TALKS."

IN REPLY TO A QUESTION ON WHEN A FIRM DATE WOULD BE SET FOR THE HIGH LEVEL TALKS, MR MACLEOD SAID HE DID NOT KNOW, BUT HE HOPED THAT IT WOULD BE VERY SOON. "I THINK THERE'S NO DISAGREEMENT ON THAT, THAT WE SHOULD GET ON AND HAVE THOSE TALKS AND TRY TO REACH A SOLUTION FAIRLY SOON."

ON HIS VISIT, MR MACLEOD TOLD REPORTERS THAT HE TOOK THE OPPORTUNITY TO CALL ON THE GOVERNOR OF THE BANK OF ENGLAND AND SOME OF HIS KEY STAFF. "IT'S QUITE IMPORTANT FOR ME TO KEEP IN TOUCH WITH THE BANK OF ENGLAND WHO ARE VERY HELPFUL TO US IN GIVING US ADVICE AND OCCASIONALLY LENDING US EXPERTS ON MONETARY MATTERS."

HE ALSO MET THE SECRETARY OF STATE FOR TRADE AND INDUSTRY, MR MICHAEL HESELTINE, TO TALK ABOUT ISSUES OF MUTUAL INTEREST. OTHER SENIOR OFFICIALS WHOM MR MACLEOD MET IN LONDON INCLUDED THE TWO PERMANENT SECRETARIES OF THE UNITED KINGDOM TREASURY.

FRIDAY, JUNE 26, 1992

STANDARD 8-80-31700 11114
* * * * *
MORE TO GET LEGAL AID BENEFITS

* * * * *

MORE PEOPLE ARE EXPECTED TO BECOME FINANCIALLY ELIGIBLE FOR LEGAL AID UNDER A NEW MEANS TEST WHICH WILL TAKE EFFECT ON JULY 1.

THE NECESSARY FUNDING FOR THE NEW MEANS TEST, CALLED THE "FINANCIAL CAPACITY" APPROACH, HAS BEEN APPROVED BY THE FINANCE COMMITTEE TODAY (FRIDAY).

ANY PERSON APPLYING FOR LEGAL AID HAS TO SATISFY THE ELIGIBILITY CRITERIA ON BOTH MEANS AND MERITS GROUNDS.

AT PRESENT, AN APPLICANT IS REQUIRED TO SATISFY THE FINANCIAL LIMITS ON BOTH DISPOSABLE MONTHLY INCOME (\$2,200) AND DISPOSABLE CAPITAL (\$15,000).

THIS APPROACH DISADVANTAGES APPLICANTS WHOSE RESOURCES CONSIST MAINLY OF EITHER INCOME OR CAPITAL.

MOREOVER, THE FINANCIAL LIMITS WHICH WERE LAST REVISED IN 1986 LAG BEHIND INCREASES IN EARNINGS OVER THE YEARS AND NEED TO BE UPDATED.

THE NEW "FINANCIAL CAPACITY" APPROACH TOWARDS MEANS TESTING REMOVES THE DRAWBACKS OF THE EXISTING SYSTEM FOR ASSESSING MEANS AND BRINGS THE FINANCIAL LIMITS UP TO DATE.

UNDER THIS APPROACH, AN APPLICANT'S MEANS ARE ASSESSED ON THE BASIS OF HIS AGGREGATE "FINANCIAL RESOURCES", INCLUDING DISPOSABLE ANNUAL INCOME AND DISPOSABLE CAPITAL.

THE NEW LIMIT OF THE "FINANCIAL RESOURCES" AT \$120,000 WILL ALSO ENABLE MORE APPLICANTS TO BECOME FINANCIALLY ELIGIBLE FOR LEGAL AID.

THE LAWS HAVE ALSO BEEN AMENDED TO GIVE THE DIRECTOR OF LEGAL AID THE DISCRETION TO GRANT LEGAL AID IN CRIMINAL CASES TO APPLICANTS WHOSE FINANCIAL RESOURCES EXCEED THE \$120,000 LIMIT.

THIS DISCRETION WILL BE EXERCISED WHERE THE APPLICANT CANNOT AFFORD THE COST OF LEGAL REPRESENTATION BUT WHERE PROVISION OF LEGAL ASSISTANCE AT PUBLIC EXPENSE IS DESIRABLE IN THE INTERESTS OF JUSTICE.

THE NECESSARY LEGISLATIVE WORK FOR IMPLEMENTING THE "FINANCIAL CAPACITY" APPROACH HAS BEEN COMPLETED.

RESOURCES HAVE BEEN PROVIDED FOR IMPLEMENTING THE APPROACH IN THE CURRENT FINANCIAL YEAR.

FRIDAY, JUNE 26, 1992

- 9 -

TWO ANTI-DRUG RULES EFFECTIVE TODAY

* * * * *

TWO ANTI-DRUG BILLS PASSED BY THE LEGISLATIVE COUNCIL ON WEDNESDAY CAME INTO EFFECT TODAY (FRIDAY).

THEY ARE THE DANGEROUS DRUGS (AMENDMENT) (NO. 2) ORDINANCE 1992 AND THE ACETYLATED SUBSTANCES (CONTROL) (AMENDMENT) ORDINANCE 1992.

A SPOKESMAN FOR THE NARCOTICS DIVISION OF GOVERNMENT SECRETARIAT SAID AMENDMENTS TO THE ORDINANCES WERE MADE AS A RESULT OF AN APPEAL COURT RULING LAST YEAR THAT CERTAIN PRESUMPTIONS IN THE DANGEROUS DRUGS ORDINANCE HAD BEEN REPEALED BY THE BILL OF RIGHTS ORDINANCE.

"THE OPPORTUNITY HAS ALSO BEEN TAKEN TO UPDATE CERTAIN PROVISIONS TO MAINTAIN AN APPROPRIATE LEVEL OF DETERRENT," HE SAID.

AMENDMENTS TO THE DANGEROUS DRUGS ORDINANCE INCLUDE:

- * REMOVING THE SEPARATE OFFENCE OF POSSESSION OF DANGEROUS DRUGS FOR THE PURPOSES OF UNLAWFUL TRAFFICKING AND INCLUDING THIS OFFENCE AS A TRAFFICKING OFFENCE;
- * INCREASING THE MAXIMUM PENALTIES FOR POSSESSION OFFENCES ON INDICTMENT TO SEVEN YEARS' IMPRISONMENT AND A FINE OF \$1 MILLION;
- * INCREASING THE MAXIMUM FINE FOR POSSESSION OFFENCES ON SUMMARY CONVICTION TO \$100,000, WHILE RETAINING THE MAXIMUM TERM OF IMPRISONMENT AT THREE YEARS; AND
- * AMENDING AND REPEALING INCOMPATIBLE PRESUMPTIONS, FOR EXAMPLE, THE PRESCRIBED MINIMUM AMOUNTS OF DRUGS FOR THE PURPOSE OF UNLAWFUL TRAFFICKING WERE REPEALED, AND THE SCOPE OF THE PRESUMPTION CONCERNING POSSESSION OF DANGEROUS DRUGS WAS RESTRICTED.

THE ACETYLATED SUBSTANCES (CONTROL) (AMENDMENT) ORDINANCE 1992 HAS MADE SIMILAR AMENDMENTS TO RESTRICT THE SCOPE OF THE PRESUMPTION CONCERNING POSSESSION OF ACETYLATED SUBSTANCES.

- - - - 0 - - - -

/10

KOWLOON WALLED CITY CLEARREES URGED TO LEAVE BY TUESDAY

* * * * *

THE DEPUTY SECRETARY FOR HOME AFFAIRS (SPECIAL DUTIES), MR PHILIP CHOK, TODAY (FRIDAY) URGED KOWLOON WALLED CITY CLEARREES STILL REMAINING IN PHASE III OF THE CLEARANCE TO LEAVE BY NEXT TUESDAY (JUNE 30) REGARDLESS OF WHETHER OR NOT THEY HAVE ACCEPTED GOVERNMENT'S COMPENSATION OFFERS.

"THE GOVERNMENT IS DETERMINED TO SEE THIS CLEARANCE THROUGH. IT WILL BE STRICTLY ENFORCED ON JULY 1," MR CHOK SAID.

AT PRESENT, 232 HOUSEHOLDS REMAIN IN PHASE III. OF THESE, ONLY 86 HAVE YET TO ACCEPT GOVERNMENT'S COMPENSATION OFFERS.

MR CHOK ADDED THAT THOSE PHASE III CLEARREES WHO REMAIN DISSATISFIED WITH GOVERNMENT'S COMPENSATION OFFERS WOULD HAVE UP TO AUGUST 2 EITHER TO SUBMIT DOCUMENTS TO SUBSTANTIATE A CLAIM FOR HIGHER COMPENSATION OR TO APPEAL TO THE ASSESSMENT REVIEW BOARD.

"FURTHERMORE, AUGUST 2 WILL ALSO BE THE DEADLINE FOR APPEALS TO THE APPEALS TRIBUNAL FOR CLEARREES FROM ALL PHASES OF THE WALLED CITY," HE SAID.

WITH THE COMPLETION OF PHASE III CLEARANCE, THE WALLED CITY WILL BE FREE OF INHABITANTS.

THE GOVERNMENT WILL SPEED UP ASBESTOS REMOVAL WORK AND PREPARE FOR THE SITE TO BE HANDED OVER TO THE DEMOLITION CONTRACTOR IN OCTOBER.

THE PROJECT IS ESTIMATED TO COST OVER \$3.1 BILLION. SO FAR GOVERNMENT HAS PAID OUT \$2.84 BILLION.

- - - - 0 - - - -

REVISED FEES FOR AFD SERVICES

* * * * *

THE AGRICULTURE AND FISHERIES DEPARTMENT (AFD) TODAY (FRIDAY) ANNOUNCED THAT FEES FOR SEVERAL CATEGORIES OF ITS SERVICES WILL BE REVISED FROM JULY 1.

THESE INCLUDE FEES FOR RE-EXPORT CERTIFICATES ISSUED IN RELATION TO THE CONVENTION ON INTERNATIONAL TRADE IN ENDANGERED SPECIES OF WILD FAUNA AND FLORA (CITES); FEES FOR HEALTH CERTIFICATES AND OFFICIAL VETERINARY EXAMINATION OF MAMMALS AND BIRDS; AND FEES FOR THE PURCHASE OF FOREST END ORNAMENTAL TREE SEEDLINGS FROM THE AFD.

FEES FOR CITES RE-EXPORT CERTIFICATES WILL GO UP FROM \$110 TO \$135, A SPOKESMAN FOR THE DEPARTMENT SAID, ADDING THAT THE LAST FEE REVISION WAS MADE IN MAY LAST YEAR.

/THESE CERTIFICATES

THESE CERTIFICATES WERE ISSUED MAINLY FOR THE PURPOSE OF RE-EXPORTING HANDBAGS, SHOES, BELTS AND OTHER MANUFACTURED PRODUCTS MADE FROM SKINS OF SNAKES, LIZARDS AND CROCODILES; ARTIFICIALLY PROPAGATED PLANT MATERIALS AND PRODUCTS SUCH AS AMERICAN GINSENG ROOT; AS WELL AS HIPPO TEETH CARVINGS AND MINK COATS, HE EXPLAINED.

AS FOR THE OFFICIAL VETERINARY EXAMINATION (INCLUDING ISSUE OF HEALTH CERTIFICATES) OF MAMMALS, BIRDS, REPTILES, AMPHIBIANS, FISH, INVERTEBRATES, BEES, ANIMAL BY-PRODUCTS, ANIMAL FEEDING STUFFS AND FOOD CONTAINING ANIMAL OR POULTRY PRODUCTS FOR EXPORT FROM HONG KONG, THE FOLLOWING FEES WILL BE CHARGED:

	EXAMINATION FEES \$	VISITING FEES \$
1. FOR EXAMINATION OF MAMMALS:		
(A) FOR A SINGLE ANIMAL	145	655
(B) FOR A CONSIGNMENT OF UP TO 50 HEADS OF ANIMALS	350	655
(C) FOR A CONSIGNMENT EXCEEDING 50 HEADS OF ANIMALS	555	655
2. FOR EXAMINATION OF BIRDS, REPTILES, AMPHIBIANS, FISH AND INVERTEBRATES OTHER THAN BEES:		
(A) FOR A SINGLE ANIMAL	145	655
(B) FOR A CONSIGNMENT OF UP TO 100 HEADS OF ANIMALS	350	655
(C) FOR A CONSIGNMENT OF EXCEEDING 100 HEADS OF ANIMALS	555	655
3. FOR EXAMINATION OF ANIMAL BY-PRODUCTS AND ANIMAL FEEDING STUFFS:		
(A) FOR A CONSIGNMENT OF UP TO 10,000 KGS.	165	295
(B) FOR A CONSIGNMENT EXCEEDING 10,000 KGS. AND UP TO 20,000 KGS.	210	295
(C) FOR A CONSIGNMENT EXCEEDING 20,000 KGS.	275	295
4. FOR EXAMINATION OF BEES:		
(A) FOR EACH HIVE	155	735
(B) FOR EACH ADDITIONAL HIVE	105	-
5. FOR EXAMINATION OF FOOD CONTAINING ANIMAL OR POULTRY PRODUCTS	3,800	-

THE REVISED FEES ARE CHARGED ON A FULL COST RECOVERY BASIS AND TAKE INTO ACCOUNT THE INFLATION RATE SINCE THE FEES WERE LAST SET IN JUNE 1989.

REGARDING THE PURCHASE OF FOREST AND ORNAMENTAL TREE SEEDLINGS FROM THE DEPARTMENT, THE FOLLOWING NEW CHARGES WILL APPLY:

APPROXIMATE HEIGHT ----- (MM)	UNIT PRICE ----- (\$)
150 TO 300	6.5
301 TO 600	13.5
601 TO 1,750	20.0

PREVIOUS FEES FOR THIS SERVICE WERE SET IN SEPTEMBER 1990, THE SPOKESMAN SAID.

HE ADDED THAT A LIST OF THE SEEDLINGS AVAILABLE AND INFORMATION ON THE SALE AND ORDERING PROCEDURES MAY BE OBTAINED ON APPLICATION FROM THE DIRECTOR OF AGRICULTURE AND FISHERIES.

THE VARIOUS REVISIONS OF FEES WERE GAZETTED TODAY (FRIDAY).

----- 0 -----

SCHOOLS GIVEN MORE FLEXIBILITY AND ROOM FOR INITIATIVE

* * * * *

THE GOVERNMENT PLANS TO EXTEND THE SCHOOL MANAGEMENT INITIATIVE (SMI) SCHEME THROUGHOUT PUBLIC SECTOR SCHOOLS WITHIN A FEW YEARS.

AT PRESENT, 21 VOLUNTEER-AIDED SECONDARY SCHOOLS HAVE TAKEN PART IN THE FIRST PHASE OF IMPLEMENTATION OF THIS NEW INITIATIVE.

THE EDUCATION DEPARTMENT HAS SELECTED 10 GOVERNMENT SCHOOLS AND IS INVITING MORE AIDED SCHOOLS TO JOIN THE SECOND STAGE OF IMPLEMENTATION WHICH WILL BEGIN IN SEPTEMBER THIS YEAR.

"THE SCHEME WILL BE EXTENDED TO GOVERNMENT AND AIDED PRIMARY SCHOOLS IN SEPTEMBER 1993 AND FURTHER TO SPECIAL SCHOOLS IN SEPTEMBER 1994," THE SECRETARY FOR EDUCATION AND MANPOWER, MR JOHN CHAN, SAID TODAY (FRIDAY).

"INEVITABLY THERE WILL BE TEETHING PROBLEMS IN THE EARLY STAGES, BUT WITH GOODWILL AND THE COMMITMENT TO PROVIDE QUALITY EDUCATION, IT SHOULD BE POSSIBLE TO EXTEND SMI IN A TRIED AND TESTED MANNER TO ALL OTHER SCHOOLS IN THE PUBLIC SECTOR - PRIMARY AS WELL AS SECONDARY - WITHIN A FEW YEARS," HE ADDED.

MR CHAN WAS SPEAKING AT THE PO LEUNG KUK DIRECTORS' LUNCHEON.

EXPLAINING THE BACKGROUND AND AIMS OF THE SMI, MR CHAN SAID IT WAS IN ESSENCE A CO-ORDINATED SET OF PROPOSALS FOR ENABLING SCHOOLS TO MAKE THOSE DECISIONS ABOUT THEIR SERVICES WHICH WERE BEST MADE AT THE SCHOOL LEVEL.

HE SAID SMI ALSO TOUCHED ON A FUNDAMENTAL PROBLEM CONNECTED WITH THE PRESENT FRAMEWORK OF CONTROLS UNDER THE EDUCATION ORDINANCE AND THE CODES OF AID WHICH WERE BASED ON A "POLICING" PHILOSOPHY.

THE LEGISLATION CONTAINS A LARGE NUMBER OF PENALTIES AIMED AT THE CONTROL OF "WRONGDOING" IN SCHOOLS WHILE THE CODES CONTAIN A LOT OF DETAIL AIMED AT CONTROLLING COST.

BUT THERE IS LITTLE IN THE PRESENT FRAMEWORK ABOUT ENCOURAGING EFFECTIVENESS.

"IN DEVOLVING MORE POWER TO SCHOOLS TO RUN THEMSELVES MORE EFFICIENTLY, THEREFORE, SMI SEEKS TO CHANGE THE ROLE OF THE EDUCATION AUTHORITIES FROM ONE OF CONTROL, TO ONE OF SUPPORT AND ENCOURAGEMENT FOR SCHOOLS, PROVIDING A FRAMEWORK WHERE EACH SCHOOL HAS MORE FLEXIBILITY AND ROOM FOR INITIATIVE BETTER TO SERVE THE NEEDS OF ITS STUDENTS," MR CHAN SAID.

"IN LINE WITH THIS NEW APPROACH, WE ARE CURRENTLY REVIEWING THE EDUCATION ORDINANCE AND THE CODES OF AID.

BUT MR CHAN WAS QUICK TO DISMISS THE MISUNDERSTANDING AND MISREPRESENTATION OF SOME COMMENTATORS THAT THE IMPLEMENTATION OF THE SMI WAS AN ATTEMPT BY THE GOVERNMENT TO WASH ITS HANDS OF RESPONSIBILITY FOR EDUCATION.

NOR DID HE AGREE THAT IT IS SIMPLY A TRICK TO REDUCE THE FUNDING OF SCHOOLS AND A DEVICE TO FORCE SCHOOLS INTO A STRAITJACKET OF CONTROLS.

HE EXPLAINED: "THE PRESENT EMPHASIS IN THE ARRANGEMENTS WITH THESE SCHOOLS, AS I HAVE ALREADY SAID IS ON OVER-DETAILED CONTROLS, WHICH DO LITTLE TO ENCOURAGE, AND MAY INDEED HAMPER, GOOD MANAGEMENT AND QUALITY SERVICE.

"THE AIM OF SMI IS TO CHANGE THE EMPHASIS, TOWARDS A FRAMEWORK WHERE RESPONSIBILITIES ARE CLEARLY DEFINED; WHERE MORE DECISION-MAKING AUTHORITY IS DEVOLVED TO SCHOOLS; AND WHERE THOSE WHO USE THE SERVICES OF THE SCHOOL CAN BE INFORMED OF ITS ACHIEVEMENTS.

"THE GOVERNMENT WILL RETAIN, UNDER THIS NEW FRAMEWORK, ULTIMATE RESPONSIBILITY FOR THE EDUCATION SERVICE, AND WILL CONTINUE TO BACK SCHOOLS UP WITH FUNDING, CENTRAL SUPPORT SERVICES, ADVICE, AND - WHERE NECESSARY - CONTROLS."

AS REGARDS FUNDING, MR CHAN NOTED THAT A SCHOOL JOINING THE SMI WOULD RECEIVE THE SAME FUNDING AS A COMPARABLE SCHOOL NOT IN THE SMI.

THE DIFFERENCE LIES IN THE FLEXIBILITY THE SMI SCHOOL WILL ENJOY IN THE USE OF ITS BLOCK GRANT FOR ITEMS OTHER THAN TEACHER SALARIES.

"THIS FLEXIBILITY, ALLIED WITH THE NEW PLANNING AND MANAGEMENT PROCEDURES BEING DEVELOPED IN THE SMI SCHOOLS, SHOULD SIGNIFICANTLY ENHANCE THE MOTIVATION AND MORALE OF SCHOOLS AND THEIR STAFF, WITH OBVIOUS BENEFITS TO THE QUALITY OF THEIR SERVICE," HE SAID.

"IT IS TRUE, OF COURSE, THAT THE EDUCATION DEPARTMENT AND EDUCATION AND MANPOWER BRANCH ARE UNDER CONSTANT PRESSURE TO FIND WAYS TO OBTAIN MORE PRODUCTIVE USE OF THE ENORMOUS RESOURCES DEVOTED TO SCHOOLS.

"THIS IS ESSENTIAL IF WE ARE TO FUND THE MANY IMPORTANT IMPROVEMENT MEASURES WHICH YOU AND THE GENERAL PUBLIC SO EAGERLY DESIRE.

"BUT ANY SAVINGS WE IDENTIFY WILL APPLY TO SCHOOLS GENERALLY," HE STRESSED.

- - - - 0 - - - -

HK FULLY CO-OPERATES IN DRUG FIGHT
* * * * *

HONG KONG CO-OPERATES TO THE FULLEST POSSIBLE EXTENT IN THE INTERNATIONAL FIGHT AGAINST DRUG ABUSE AND DRUG TRAFFICKING.

THIS WAS STATED BY THE SECRETARY FOR SECURITY, MR ALISTAIR ASPREY, TODAY (FRIDAY) WHEN OFFICIATING AT AN ANTI-DRUG EXHIBITION TO COMMEMORATE THE ANNUAL INTERNATIONAL DAY AGAINST DRUG ABUSE AND ILLICIT TRAFFICKING.

HE SAID: "WE HAVE ENTERED INTO BILATERAL MUTUAL LEGAL ASSISTANCE AGREEMENTS WITH 10 OVERSEAS JURISDICTIONS TO ENABLE FOREIGN COURT ORDERS TO BE ENFORCED IN HONG KONG, AND VICE VERSA.

"THIS MEANS THAT WE ARE ABLE TO CONFISCATE THE PROCEEDS OF THOSE WHO BENEFIT FROM DRUG TRAFFICKING.

"LAST DECEMBER WE ALSO ASSISTED THE WORLD HEALTH ORGANISATION IN ORGANISING A WORKSHOP ON DRUG ABUSE PREVENTION AND CONTROL IN CHINA, HONG KONG, AND MACAU."

MR ASPREY ADDED THAT AS A RESULT OF THE WORKSHOP, HONG KONG HAD CONTINUED TO CO-OPERATE WITH CHINA AND MACAU IN PREVENTION, TREATMENT AND REHABILITATION.

"HONG KONG ALSO CONTINUES TO PARTICIPATE ACTIVELY IN THE BUSINESS OF INTERNATIONAL ORGANISATIONS, SUCH AS THE UNITED NATIONS COMMISSION ON NARCOTIC DRUGS, THE FINANCIAL ACTION TASK FORCE AND THE CHEMICAL ACTION TASK FORCE."

/THE SECRETARY

THE SECRETARY EMPHASISED THAT THE POLICE FORCE AND THE CUSTOMS AND EXCISE DEPARTMENT CONTINUED TO TAKE VIGOROUS ACTION TO RESTRICT THE FLOW OF NARCOTIC DRUGS AND PSYCHOTROPIC SUBSTANCES INTO HONG KONG, RESULTING IN A NUMBER OF LARGE SEIZURES OF DRUGS DESTINED FOR HONG KONG, BUT PRINCIPALLY FOR TRANSIT ELSEWHERE.

WHILE TALKING ABOUT TREATMENT AND REHABILITATION PROGRAMMES, MR ASPREY SAID HONG KONG HAD, FOR MANY YEARS, ADOPTED A WIDE RANGE OF MEASURES, AIMED AT PROVIDING HELP TO THOSE WHO HAD FALLEN VICTIMS TO DRUG ABUSE.

HE SAID DRUG ABUSE WAS A CHRONICALLY RELAPSING DISEASE, AND, THEREFORE, IT WAS NOT SURPRISING THAT MANY VICTIMS FOUND THEMSELVES UNABLE TO CONTINUE TREATMENT.

"BUT WE MUST CONTINUE TO TRY TO ENCOURAGE THEM TO COME FORWARD, IN THE HOPE THAT, ONE DAY, THEY WILL BE MOTIVATED SUFFICIENTLY TO STOP TAKING DRUGS AND TO BEGIN TO MAKE A MEANINGFUL CONTRIBUTION TO SOCIETY," HE SAID.

TURNING TO PREVENTIVE EDUCATION AND PUBLICITY CAMPAIGN, MR ASPREY SAID: "OUR EFFORTS ARE AIMED AT EXPLAINING THE DANGERS OF DRUG ABUSE AND ENCOURAGING YOUNG PEOPLE, IN PARTICULAR, TO SAY NO TO DRUGS."

"COMMUNITY INVOLVEMENT IS ESSENTIAL IF PUBLIC AWARENESS OF THE DRUG PROBLEM AND OF THE ADVANTAGES OF A DRUG-FREE LIFESTYLE IS TO BE PROMOTED."

HE URGED YOUNG PEOPLE TO HELP CREATE A DRUG-FREE HONG KONG, AND TO HELP OTHERS TO LEAD A HEALTHY LIFESTYLE, FREE FROM THE SCOURGE OF DRUGS.

THE ANTI-DRUG EXHIBITION, ORGANISED BY THE ACTION COMMITTEE AGAINST NARCOTICS (ACAN), IS HELD AT METROPLAZA, KWAI FONG, UNTIL SUNDAY (JUNE 28).

SUPPLEMENTED BY VIDEOS, A WIDE RANGE OF PANEL DISPLAYS INTRODUCING HONG KONG'S OVERALL ANTI-DRUG WORK ARE ON STAGE.

ALSO ON DISPLAY INCLUDE SEIZED DRUGS, DRUG-SMOKING PARAPHERNALIA AND DRUG CONCEALMENT DEVICES FROM BOTH THE POLICE AND CUSTOMS.

PUBLICITY MATERIALS, INCLUDING PAPER CLIPS AND BALLOONS, ARE DISTRIBUTED TO VISITORS ON A FIRST-COME, FIRST-SERVED BASIS.

THREE LOCAL POP SINGERS WILL HELP DISSEMINATE ANTI-DRUG MESSAGE AT A MINI-CONCERT AT 2 PM TOMORROW (SATURDAY) AND ON SUNDAY AT THE EXHIBITION VENUE.

ALSO ATTENDING THE CEREMONY WERE ACAN CHAIRMAN, DR GERALD CHOA, AND THE ACTING COMMISSIONER FOR NARCOTICS, MS ANISSA WONG. A BUS PARADE WAS LAUNCHED AT THE MAIN ENTRANCE TO METROPLAZA.

A TOTAL OF FOUR DOUBLE-DECKERS TOOK PART IN THE PARADE AND TRAVELLED AROUND THE TERRITORY WITH 50 YOUNG VOLUNTEERS TO DISSEMINATE ANTI-DRUG MESSAGES AND TO DISTRIBUTE PUBLICITY MATERIALS TO THE PUBLIC.

FRIDAY, JUNE 26, 1992

- 16 -

PROVISIONAL TRADE FIGURES FOR MAY

* * * * *

RE-EXPORTS LAST MONTH RECORDED A FURTHER MARKED INCREASE OVER A YEAR EARLIER, WHILE DOMESTIC EXPORTS SHOWED LITTLE CHANGES. IMPORTS CONTINUED TO RISE SIGNIFICANTLY.

THESE ARE SHOWN IN THE PROVISIONAL TRADE FIGURES RELEASED TODAY (FRIDAY) BY THE CENSUS AND STATISTICS DEPARTMENT.

THE VALUE OF RE-EXPORTS ROSE BY \$12,252 MILLION OR 27.3% OVER A YEAR EARLIER TO \$57,176 MILLION LAST MONTH.

ON THE OTHER HAND, THE VALUE OF DOMESTIC EXPORTS IN MAY, AT \$19,406 MILLION, WAS \$25 MILLION OR 0.1% LOWER.

TAKING RE-EXPORTS AND DOMESTIC EXPORTS TOGETHER, THE VALUE OF TOTAL EXPORTS IN MAY GREW BY \$12,227 MILLION OR 19.0% OVER A YEAR EARLIER TO \$76,582 MILLION.

MEANWHILE, THE VALUE OF IMPORTS IN MAY INCREASED BY \$14,380 MILLION OR 21.4% OVER A YEAR EARLIER TO \$81,518 MILLION.

AS THE VALUE OF TOTAL EXPORTS WAS SMALLER THAN THAT OF TOTAL IMPORTS, A VISIBLE TRADE DEFICIT OF \$4,936 MILLION, EQUIVALENT TO 6.1% OF THE VALUE OF IMPORTS, WAS RECORDED IN MAY THIS YEAR.

THIS COMPARED WITH THE DEFICIT OF \$2,783 MILLION, EQUIVALENT TO 4.1% OF THE VALUE OF IMPORTS, RECORDED IN MAY LAST YEAR.

IN THE FIRST FIVE MONTHS OF 1992, THE VALUE OF RE-EXPORTS INCREASED BY \$59,320 MILLION OR 31.1% OVER A YEAR EARLIER TO \$250,118 MILLION.

THE VALUE OF DOMESTIC EXPORTS AMOUNTED TO \$85,830 MILLION, \$283 MILLION OR 0.3% LESS THAN IN THE SAME PERIOD LAST YEAR.

TAKING RE-EXPORTS AND DOMESTIC EXPORTS TOGETHER, THE VALUE OF TOTAL EXPORTS IN THE FIRST FIVE MONTHS OF 1992, AT \$335,948 MILLION, WAS \$59,037 MILLION OR 21.3% HIGHER THAN A YEAR EARLIER.

THE VALUE OF IMPORTS INCREASED BY \$62,395 MILLION OR 21.1% TO \$358,025 MILLION.

A VISIBLE TRADE DEFICIT OF \$22,077 MILLION, EQUIVALENT TO 6.2% OF THE VALUE OF IMPORTS, WAS RECORDED IN THE FIRST FIVE MONTHS OF 1992.

THIS COMPARED WITH THE DEFICIT OF \$18,719 MILLION, EQUIVALENT TO 6.3% OF THE VALUE OF IMPORTS, RECORDED IN THE SAME PERIOD IN 1991.

/A GOVERNMENT

A GOVERNMENT SPOKESMAN COMMENTED THAT APART FROM THE SUSTAINED RAPID GROWTH IN RE-EXPORTS, IMPORTS ALSO ROSE SIGNIFICANTLY IN RECENT MONTHS AND THIS WAS SUPPORTED IN PART BY A CONTINUED GROWTH IN RETAINED IMPORTS, BY 8.6% IN VALUE TERMS IN THE FIRST FIVE MONTHS OF 1992 OVER A YEAR EARLIER.

THIS SHOULD HAVE FAVOURABLE IMPLICATIONS FOR DOMESTIC DEMAND IN THE COMING MONTHS, HE SAID.

FOLLOWING IS A TABLE PRESENTING THE PROVISIONAL TRADE FIGURES FOR MAY 1992:

MERCHANDISE: DOMESTIC EXPORTS	:	\$19,406 MILLION	
RE-EXPORTS	:	\$57,176 MILLION	
TOTAL EXPORTS	:	\$76,582 MILLION	
IMPORTS	:	\$81,518 MILLION	
TRADE BALANCE	:	\$4,936 MILLION	(IN DEFICIT)

COMPARATIVE FIGURES

LATEST 3 MONTHS	MAR 92 TO	MAR 91 TO	INCREASE	
	MAY 92	MAY 91	HK\$ MN.	%
	HK\$ MN.	HK\$ MN.		
DOMESTIC EXPORTS	54,175	52,591	1,584	3.0
RE-EXPORTS	161,729	120,316	41,413	34.4
TOTAL EXPORTS	215,904	172,907	42,997	24.9
IMPORTS	233,942	189,960	43,982	23.2
TRADE BALANCE	-18,038	-17,053	-985	

SAME MONTH LAST YEAR	MAY	MAY	INCREASE	
	1992	1991	HK\$ MN.	%
	HK\$ MN.	HK\$ MN.		
DOMESTIC EXPORTS	19,406	19,431	-25	-0.1
(% OF TOTAL EXPORTS)	(25.3%)	(30.2%)		
RE-EXPORTS	57,176	44,924	12,252	27.3
TOTAL EXPORTS	76,582	64,355	12,227	19.0
IMPORTS	81,518	67,138	14,380	21.4
TRADE BALANCE	-4,936	-2,783	-2,153	

LAST MONTH	MAY	APRIL	INCREASE	
	1992	1992	HK\$ MN.	%
	HK\$ MN.	HK\$ MN.		
DOMESTIC EXPORTS	19,406	17,718	1,688	9.5
(% OF TOTAL EXPORTS)	(25.3%)	(24.9%)		
RE-EXPORTS	57,176	53,330	3,846	7.2
TOTAL EXPORTS	76,582	71,048	5,534	7.8
IMPORTS	81,518	78,551	2,967	3.8
TRADE BALANCE	-4,936	-7,503	2,567	

- 18 -

CALENDAR YEAR TO-DATE	JAN-MAY	JAN-MAY	INCREASE	
	1992	1991	HK\$ MN.	%
DOMESTIC EXPORTS	85,830	86,113	-283	-0.3
(% OF TOTAL EXPORTS)	(25.5%)	(31.1%)		
RE-EXPORTS	250,118	190,798	59,320	31.1
TOTAL EXPORTS	335,948	276,911	59,037	21.3
IMPORTS	358,025	295,630	62,395	21.1
TRADE BALANCE	-22,077	-18,719	-3,358	

LAST 12 MONTHS	JUN 91 TO	JUN 90 TO	INCREASE	
	MAY 92	MAY 91	HK\$ MN.	%
DOMESTIC EXPORTS	230,762	230,296	466	0.2
RE-EXPORTS	594,161	455,895	138,266	30.3
TOTAL EXPORTS	824,923	686,191	138,732	20.2
IMPORTS	841,378	698,348	143,030	20.5
TRADE BALANCE	-16,455	-12,157	-4,298	

- - - - 0 - - - -

SURVEY FINDINGS ON MEDIA INFLUENCE ON YOUTH RELEASED

* * * * *

YOUNG PEOPLE ARE KEEN CONSUMERS OF THE MASS MEDIA, ACCORDING TO A SURVEY CONDUCTED BY THE COMMISSION ON YOUTH.

THEY SPEND AN AVERAGE OF MORE THAN 21 HOURS WATCHING TELEVISION EVERY WEEK, 7.5 HOURS LISTENING TO THE RADIO AND 3.5 HOURS READING NEWSPAPERS.

ANNOUNCING THE FINDINGS OF THE SURVEY AT A PRESS CONFERENCE TODAY (FRIDAY), THE CONVENOR OF THE WORKING GROUP ON THE STUDY ON THE INFLUENCE OF THE MASS MEDIA ON YOUTH, PROFESSOR NELSON CHOW, SAID YOUNG PEOPLE'S CHOICE OF THE MEDIA AND ITS PROGRAMMES OR CONTENTS DEPENDED LARGELY ON HOW MUCH ENTERTAINMENT THEY COULD GET THROUGH THAT PARTICULAR MEDIUM.

FOR EXAMPLE, YOUNG PEOPLE PREFER ENTERTAINING TELEVISION PROGRAMMES AND DRAMA SERIES. THE ENTERTAINMENT PAGE IN NEWSPAPERS IS ALSO POPULAR.

PROFESSOR CHOW SAID: "THE MORE LEISURE TIME THE STUDENTS HAVE, THE HIGHER THEIR PROPENSITY TO WATCH TELEVISION, READ MAGAZINES AND PLAY VIDEO GAMES.

"YET, STUDENTS CAN STILL FIND TIME TO READ NEWSPAPERS EVEN WHEN THEY ARE BUSY. WORKING YOUTH, ON THE OTHER HAND, WOULD READ COMIC BOOKS EVEN IF THEY ARE OCCUPIED.

"IDOL ADORATION IS PREVALENT AMONG SECONDARY SCHOOL STUDENTS. ABOUT 40 PER CENT HAVE AN IDOL - POP SINGERS, AND MOVIE OR TELEVISION STARS."

PROFESSOR CHOW SAID THE SURVEY ALSO REVEALED THAT 81 PER CENT OF THE YOUNG PEOPLE HAD A VIDEO RECORDER OR LASER DISC PLAYER AT HOME, AND THEY WERE GIVEN A HIGH DEGREE OF FREEDOM IN RENTING VIDEO TAPES OF THEIR CHOICE.

THE SURVEY ALSO AIMED AT SOLICITING YOUNG PEOPLE'S ASSESSMENT ON THE VARIOUS MODES OF MASS MEDIA.

"IN GENERAL, THEY CONSIDER NEWSPAPER A CREDIBLE AND INFORMATION MEDIUM BUT NEITHER IS IT ENTERTAINING NOR SUITING THEIR TASTE," HE SAID.

"MAGAZINE RANKS MODERATELY IN TERMS OF ENTERTAINMENT, WHILE COMIC BOOK IS REGARDED AS ENTERTAINING BUT LACKS EDUCATIONAL VALUE.

"FOR THE ELECTRONIC MEDIA, YOUNG PEOPLE FOUND THAT RADIO IS INFORMATIVE WHILE TELEVISION IS WELCOMED BY MOST AS ENTERTAINING, CREDIBLE, MEETING THEIR NEEDS AND TO SOME EXTENT EDUCATIONAL," HE ADDED.

PROFESSOR CHOW SAID THEY ALSO TRIED TO FIND OUT IN THE SURVEY THE RELATIONSHIP BETWEEN MEDIA CONSUMPTION AND CERTAIN ATTITUDES OF YOUTH.

HE SAID: "DIFFERENT MEDIA USES ARE FOUND TO BE ASSOCIATED WITH CERTAIN ATTITUDES.

"FREQUENT TELEVISION, COMIC AND MOVIE CONSUMERS TEND TO ACCEPT THE 'NONSENSE' SUB-CULTURE.

"THOSE WHO FREQUENTLY READ COMIC BOOKS AND MAGAZINES, OR SEE MOVIES AND VIDEO TAPES TEND TO HAVE A HIGHER DEGREE OF ACCEPTANCE OF BEFRIENDING TRIAD MEMBERS."

MOREOVER, PROFESSOR CHOW SAID IDOL ADMIRATION WAS MORE COMMON AMONG YOUNG FEMALE RESPONDENTS AND POP SINGERS WERE MOST FAVOURED.

THE FINDINGS ALSO INDICATED THAT THE ADORATION OF SINGERS WAS NOT SO MUCH RELATED TO NEWSPAPER USE BUT TELEVISION EXPOSURE.

ON THE KNOWLEDGE OF CURRENT AFFAIRS, THE FINDINGS SHOWED THAT THOSE WHO READ NEWSPAPERS FREQUENTLY WERE MORE KNOWLEDGEABLE.

REFERRING TO THE INITIAL OBSERVATIONS OF THE WORKING GROUP ON THE SURVEY FINDINGS, PROFESSOR CHOW SAID TELEVISION APPEARED TO BE AN OMNIPOTENT MEDIA FOR YOUNG PEOPLE AND MESSAGES PUT ACROSS IN TELEVISION PROGRAMMES WOULD HAVE A GREAT IMPACT ON YOUNG PEOPLE.

"PROGRAMME PRODUCERS SHOULD THEREFORE BE WATCHFUL IN DESIGNING THE CONTENTS OF THEIR PROGRAMMES.

"SINCE YOUNG PEOPLE HAVE A STRONG PREFERENCE FOR ENTERTAINING ELEMENTS, WE FEEL THAT EDUCATIONAL MESSAGES COULD BE MORE EFFECTIVELY CONVEYED TO YOUTH IF THEY ARE PRESENTED IN AN ENTERTAINING MANNER.

"MOREOVER, IT IS DESIRABLE TO EXPLORE WHETHER EDUCATION ON THE CHOICE AND USE OF MEDIA SHOULD BE PROMOTED IN HONG KONG," HE ADDED.

FRIDAY, JUNE 26, 1992

- 20 -

YOUNG PEOPLE TEND TO CHOOSE THE MEDIA THAT THEY FAVOUR AND THIS IN TURN IS INFLUENCED BY THE POPULAR TRENDS AND MESSAGES RELAYED THROUGH THE MASS MEDIA.

"MEDIA CHOICE EDUCATION MAY HELP YOUNG PEOPLE BECOME DISCERNING VIEWERS WHO CAN MAKE THE BEST OUT OF THE MEDIA AVAILABLE TO THEM.

"TELEVISION STARS AND POP SINGERS CAN ALSO BE EFFECTIVE AGENTS FOR CONVEYING HEALTHY AND POSITIVE MESSAGES TO YOUNG PEOPLE," PROFESSOR CHOW SAID.

THE SURVEY ALSO FOUND THAT YOUNG PEOPLE WERE NOT A HOMOGENOUS GROUP. DIFFERENT ARCHETYPES OF YOUTH WITHIN A CERTAIN AGE GROUP COULD BE IDENTIFIED.

"EACH GROUP HAS ITS UNIQUE MEDIA CONSUMPTION PATTERN AND SPECIFIC ATTITUDES.

"THE ARCHETYPES OF YOUTH IDENTIFIED IN THIS SURVEY WOULD BE USEFUL TO PEOPLE INVOLVED IN YOUTH DEVELOPMENT WORK, FOR EXAMPLE WE NOW HAVE A CLEARER PICTURE AS TO WHICH MEDIA WE SHOULD USE TO REACH A PARTICULAR ARCHETYPE OF YOUNG PEOPLE MORE EFFECTIVELY," PROFESSOR CHOW EXPLAINED.

ON FOLLOW-UP ACTIONS, PROFESSOR CHOW SAID A SEMINAR TO DISCUSS THE SURVEY FINDINGS WOULD BE HELD LATER THIS YEAR.

THE SECONDARY ANALYSIS OF THE SURVEY WOULD ALSO BE PUBLISHED FOR SALE.

PROFESSOR CHOW ALSO HOPED TO EXPLORE THE POSSIBILITY OF INVITING MEDIA EXPERTS TO WRITE ARTICLES FOR PUBLICATION, BASED ON THE SURVEY FINDINGS.

THE SURVEY WAS CONDUCTED IN JUNE LAST YEAR, WITH THE OBJECTIVES OF IDENTIFYING THE YOUTH'S CONSUMPTION PREFERENCE OF MASS MEDIA; CORRELATING THE YOUTH'S MEDIA EXPOSURE WITH THEIR VALUES, SOCIAL PERCEPTION AND SOCIAL KNOWLEDGE; AND IDENTIFYING THE ARCHETYPES OF YOUTH AND THEIR RESPECTIVE MEDIA BEHAVIOUR.

THIS SURVEY WAS FOLLOWED BY A SECONDARY ANALYSIS OF THE DATA COLLECTED BY A RESEARCHER.

- - - - 0 - - - -

/21

FRIDAY, JUNE 26, 1992

- 21 -

TWO BOAT CLUB INSHORE PROJECTS GAZETTED

* * * * *

PERMISSION HAS BEEN GIVEN TO THE ABERDEEN BOAT CLUB TO CARRY OUT RECLAMATION AT THE NORTHERN COAST OF TONG PO CHAU IN REPULSE BAY TO PROVIDE ABOUT 760 SQUARE METRES OF LAND FOR CONSTRUCTING A CLUBHOUSE, BOATSHED AND ADDITIONAL HARDSTANDING.

THIS FOLLOWS THE GRANTING OF AN EXTENSION TO THE CLUB'S EXISTING TENANCY INVOLVING AN AREA OF ABOUT 6,300 SQUARE METRES OF FORESHORE AND SEABED.

THE RECLAMATION WORK WILL BEGIN IN AUGUST AND BE COMPLETED BY APRIL 1993.

MEANWHILE, THE GOVERNMENT INTENDS TO PERMIT THE AMERICAN CLUB TO BUILD A FLOATING PIER WITHIN AN AREA OF ABOUT 1,160 SQUARE METRES OF FORESHORE AND SEABED AT TAI TAM BAY FOR THE BERTHING OF VESSELS VISITING THE CLUB.

THE PROJECT INCLUDES AN UPGRADED RAMP AND CONCRETE BRIDGE TO THE FLOATING PIER. IT IS SCHEDULED TO BEGIN AFTER AUTHORISATION AND WILL BE COMPLETED IN ABOUT TWO YEARS.

THE EXTENTS OF THE AREAS AFFECTED BY THE TWO PROJECTS ARE DESCRIBED IN SEPARATE NOTICES GAZETTED TODAY (FRIDAY).

THE NOTICES, IN BOTH ENGLISH AND CHINESE, TOGETHER WITH THE RELATED PLANS CAN BE SEEN ON NOTICE BOARDS NEAR THE SITES.

THE PLANS CAN ALSO BE SEEN OR PURCHASED ON ORDER, AT THE BUILDINGS AND LANDS DEPARTMENT SURVEY AND MAPPING OFFICE, 14TH FLOOR, MURRAY BUILDING, GARDEN ROAD, HONG KONG.

THEY CAN ALSO BE SEEN AT THE DISTRICT OFFICES AND DISTRICT LAND OFFICES CONCERNED.

ANY PERSON WHO CONSIDERS THAT HIS INTEREST IN OR OVER THE FORESHORE AND SEABED INVOLVED IN THE ABERDEEN BOAT CLUB PROJECT WILL BE AFFECTED BY THE UNDERTAKING MAY DELIVER A WRITTEN CLAIM FOR COMPENSATION TO THE DIRECTOR OF BUILDINGS AND LANDS ON OR BEFORE JUNE 25 NEXT YEAR.

THOSE WHO CONSIDER THAT THEIR INTEREST IN OR OVER THE FORESHORE AND SEABED INVOLVED IN THE AMERICAN CLUB PROJECT WILL BE AFFECTED BY THE PROPOSED WORK MAY SUBMIT A WRITTEN OBJECTION TO THE DIRECTOR ON OR BEFORE AUGUST 25 THIS YEAR.

- - - - 0 - - - -

ALBANY ROAD PLAYGROUND TO GET IMPROVEMENTS

* * * * *

THE ARCHITECTURAL SERVICES DEPARTMENT IS INVITING TENDERS FOR IMPROVEMENT WORKS FOR ALBANY ROAD CHILDREN PLAYGROUND IN CENTRAL.

THE WORKS, WHICH INVOLVE THE UPGRADING OF PAVING, PLANTERS, ARBOURS AND PLAY EQUIPMENT, ARE EXPECTED TO START IN SEPTEMBER AND TAKE HALF A YEAR TO COMPLETE.

TENDER OFFER WILL CLOSE AT NOON ON JULY 17.

FORMS OF TENDER AND FURTHER PARTICULARS MAY BE OBTAINED FROM THE ARCHITECTURAL SERVICES DEPARTMENT, 34TH FLOOR, QUEENSWAY GOVERNMENT OFFICES, 66 QUEENSWAY, HONG KONG.

- - - - 0 - - - -

TENDERS INVITED FOR SEWAGE PUMPING STATION

* * * * *

THE DRAINAGE SERVICES DEPARTMENT IS INVITING TENDERS FOR THE CONSTRUCTION OF THE TAI PO SEWAGE PUMPING STATION UNDER THE TOLO HARBOUR EFFLUENT EXPORT SCHEME.

THE WORKS WILL INCLUDE THE CONSTRUCTION OF A REINFORCED CONCRETE PUMPING STATION AND BALANCING RESERVOIR INSIDE THE TAI PO SEWAGE TREATMENT WORKS WITH PIPEWORK AND ASSOCIATED REINFORCED CONCRETE CHAMBERS.

AS PART OF THE TOLO HARBOUR ACTION PLAN, THE TOLO HARBOUR EFFLUENT EXPORT SCHEME IS BEING IMPLEMENTED BY THE GOVERNMENT WITH THE AIM OF REDUCING POLLUTION IN TOLO HARBOUR, ONE MANIFESTATION OF WHICH IS THE FORMATION OF "RED TIDES".

UNDER THE SCHEME, THE PUMPING STATION WILL PUMP TREATED SEWAGE EFFLUENT FROM TAI PO SEWAGE TREATMENT WORKS THROUGH A SUBMARINE PIPELINE TO SHA TIN SEWAGE TREATMENT WORKS.

THE COMBINED TREATED SEWAGE FROM SHA TIN AND TAI PO WILL THEN BE PUMPED THROUGH A TWIN PUMPING MAIN AND THEN GRAVITATES THROUGH A 7.4-KILOMETRE LONG TUNNEL TO KAI TAK NULLAH AND FINALLY DISCHARGED TO VICTORIA HARBOUR, THUS ELIMINATING THE NUTRIENT-RICH EFFLUENT DISCHARGES INTO THE ENCLOSED WATERS OF TOLO HARBOUR.

WORKS ON THE PUMPING STATION ARE EXPECTED TO START THIS OCTOBER AND BE COMPLETED BY JANUARY 1995.

THE WORKS HAVE BEEN DESIGNED AND CONSTRUCTION WILL BE SUPERVISED BY BALFOURS-HASWELL, CONSULTING ENGINEERS, FOR DRAINAGE SERVICES DEPARTMENT.

FRIDAY, JUNE 26, 1992

- 23 -

FORMS OF TENDER AND FURTHER PARTICULARS MAY BE OBTAINED FROM BALFOURS-HASWELL, 10TH FLOOR, 1 KOWLOON PARK DRIVE, KOWLOON. THEY MAY BE CONTACTED ON TELEPHONE 317 5933.

TENDERS SHOULD BE PLACED IN THE GOVERNMENT SECRETARIAT TENDER BOX, SITUATED IN THE LIFT LOBBY ON THE LOWER GROUND FLOOR OF THE CENTRAL GOVERNMENT OFFICES (EAST WING), LOWER ALBERT ROAD, HONG KONG BEFORE NOON ON AUGUST 7.

- - - - 0 - - - -

EDUCATION GOALS NEED TRIPARTITE PARTNERSHIP

* * * * *

THERE IS A NEED TO ESTABLISH A GOOD PARTNERSHIP BETWEEN TEACHERS, STUDENTS AND PARENTS TO ACHIEVE EDUCATION GOALS AND TO PROVIDE A GOOD STUDYING ENVIRONMENT FOR CHILDREN, THE DIRECTOR OF EDUCATION, MR LI YUET-TING, SAID TODAY (FRIDAY).

ADDRESSING A SEMINAR FOR FIRST ASSISTANT PRINCIPALS OF SECONDARY GOVERNMENT SCHOOLS, MR LI SAID CLEAR TARGET AND SOUND RESOURCES REQUIRED THE SUPPORT OF FRONTLINE TEACHERS.

"THEY PLAY AN IMPORTANT ROLE IN IMPLEMENTING THESE NEW MEASURES," HE SAID.

NOTING THAT THE RECENTLY ANNOUNCED EDUCATION COMMISSION REPORT NO. 5 RECOMMENDED IMPROVEMENTS TO PRIMARY SCHOOL TEACHERS' STANDARD, MR LI SAID GOVERNMENT WOULD OFFER DEGREE COURSES FOR COLLEGES OF EDUCATION GRADUATES.

"FUNDS WILL ALSO BE ALLOCATED TO IMPROVE THE TEACHING STANDARD AND FACILITIES OF THE COLLEGES OF EDUCATION TO ACHIEVE THE GOAL OF FILLING 35 PER CENT OF PRIMARY TEACHING POSTS BY GRADUATES," HE ADDED.

CREATED IN 1991 AFTER THE RECOMMENDATIONS MADE IN THE CIVIL SERVICE SALARIES AND CONDITIONS OF SERVICE REPORT NO. 26, THE POST OF ASSISTANT PRINCIPAL IS TO HELP SCHOOL PRINCIPALS STRENGTHEN ADMINISTRATION, AND SERVE AS A COMMUNICATION LINK BETWEEN PRINCIPALS AND TEACHING STAFF.

- - - - 0 - - - -

SHEUNG WAN ROADS TO BE CLOSED FOR URBAN RENEWAL

* * * * *

THE GOVERNMENT PROPOSES TO CLOSE PERMANENTLY KWONG YUEN STREET WEST, KWONG YUEN STREET EAST, WING SING STREET AND THE LANE AT THE REAR OF WING WO STREET TEMPORARY PLAYGROUND IN SHEUNG WAN ON HONG KONG ISLAND TO FACILITATE AN URBAN RENEWAL PROJECT.

THE DEVELOPMENT WILL CONTAIN URBAN COUNCIL FACILITIES AND COMMERCIAL ACCOMMODATION. MOREOVER, A LANDSCAPED OPEN SPACE WILL BE CONSTRUCTED FOR THE USE OF THE PUBLIC.

DETAILS OF THE PROPOSED ROAD CLOSURES WERE GAZETTED TODAY (FRIDAY).

A PLAN SHOWING THE PROPOSED WORKS CAN BE SEEN AT THE FOLLOWING GOVERNMENT OFFICES DURING OFFICE HOURS:

- * CENTRAL AND WESTERN DISTRICT OFFICE, PUBLIC ENQUIRY SERVICE CENTRE, GROUND FLOOR, HARBOUR BUILDING, 38 PIER ROAD, CENTRAL; AND
- * DISTRICT LANDS OFFICE, HONG KONG WEST, 19TH FLOOR, SOUTHOEN CENTRE, 130 HENNESSY ROAD, WAN CHAI.

ANY PERSON OBJECTING TO THE PROPOSAL MUST SEND HIS OBJECTION IN WRITING TO THE SECRETARY FOR TRANSPORT AT THE CENTRAL GOVERNMENT OFFICES, EAST WING, SECOND FLOOR, LOWER ALBERT ROAD, CENTRAL NO LATER THAN AUGUST 25, 1992, DESCRIBING HIS INTEREST AND MANNER IN WHICH HE ALLEGES HE WILL BE AFFECTED BY THE PROPOSAL.

- - - - 0 - - - -

GOVT TO CONDUCT HEALTH MANPOWER SURVEY

* * * * *

THE DEPARTMENT OF HEALTH WILL CONDUCT A HEALTH MANPOWER SURVEY NEXT MONTH (JULY) TO UPDATE INFORMATION ON THE SIZE AND CHARACTERISTICS OF THE WORKFORCE OF THE LOCAL HEALTH INDUSTRY.

ANNOUNCING THIS TODAY (FRIDAY), A SPOKESMAN FOR THE DEPARTMENT SAID THE INFORMATION COLLECTED WOULD FORM USEFUL INPUTS FOR THE FORMULATION OF POLICIES ON HEALTH MANPOWER PLANNING AND TRAINING IN HONG KONG.

THE SPOKESMAN EXPLAINED THAT THE SURVEY WOULD COVER THE VARIOUS GRADES OF MEDICAL, DENTAL, NURSING AND OTHER RELATED PROFESSIONS IN DIFFERENT SECTORS OF THE HEALTH CARE INDUSTRY.

FRIDAY, JUNE 26, 1992

- 25 -

"QUESTIONNAIRES WILL BE SENT EARLY NEXT MONTH TO MORE THAN 10,000 INSTITUTIONS IN BOTH THE PUBLIC AND PRIVATE SECTORS REQUESTING THEM TO SUPPLY THE RELEVANT INFORMATION TO THE DEPARTMENT.

"THE INSTITUTIONS INCLUDE HOSPITALS, CLINICS, MATERNITY HOMES, PRIVATE PRACTITIONERS' OFFICES, DENTAL SURGERIES, MEDICAL, X-RAY AND DENTAL LABORATORIES, DISPENSARIES, ELDERLY HOMES AND OPTICAL SHOPS," HE ADDED.

IT IS HOPED THAT THESE INSTITUTIONS WOULD GIVE THE SURVEY FULL SUPPORT AND RETURN THE COMPLETED QUESTIONNAIRES AND FORMS TO THE STATISTICS UNIT OF THE DEPARTMENT OF HEALTH ON OR BEFORE JULY 16 THIS YEAR.

"THEIR PARTICIPATION AND CO-OPERATION ARE EXTREMELY IMPORTANT TO MAKE THE SURVEY A SUCCESS," THE SPOKESMAN SAID.

HE STRESSED THAT THE INFORMATION SUPPLIED BY INDIVIDUALS AND INSTITUTIONS WOULD BE TREATED IN STRICT CONFIDENCE AND USED IN GLOBAL ANALYSIS ONLY.

A SIMILAR HEALTH MANPOWER SURVEY WAS CONDUCTED IN 1990 BY THE DEPARTMENT OF HEALTH AND THE HOSPITAL SERVICES DEPARTMENT.

- - - - 0 - - - -

PRE-QUALIFIED TENDERERS INVITED TO BID FOR TWO DEMOLITION WORKS
* * * * *

THE CIVIL ENGINEERING DEPARTMENT IS INVITING PRE-QUALIFIED CONTRACTORS TO TENDER FOR THE DEMOLITION WORKS OF THE KOWLOON WALLED CITY AND TWO CHIMNEYS AT THE DISUSED LOK ON PAI DESALTER.

BOTH CONTRACTS WILL PERMIT THE USE OF EXPLOSIVES AS AN ALTERNATIVE TO CONVENTIONAL DEMOLITION METHODS.

THE DEMOLITION OF THE KOWLOON WALLED CITY IS SCHEDULED TO START IN OCTOBER AND TAKES ABOUT 18 MONTHS TO COMPLETE.

IT IS THE LARGEST SINGLE DEMOLITION PROJECT OF ITS KIND IN HONG KONG.

THE HISTORICAL 'YAMEN' BUILDING, IN THE CENTRE OF THE WALLED CITY, WILL BE PRESERVED DURING THE DEMOLITION.

ABOUT 2.7 HECTARES OF THE SITE WILL BE EARMARKED FOR A PUBLIC PARK, WITH THE YAMEN BUILDING AS THE CENTRAL THEME.

/FOR THE

FRIDAY, JUNE 26, 1992

- 26 -

FOR THE DEMOLITION OF THE LOK ON PAI DESALTER CHIMNEYS, WHICH ARE 126 METRES HIGH, THE CONTRACT PERIOD WILL BE THREE MONTHS STARTING SEPTEMBER THIS YEAR.

THE SITE WILL BE USED AS PART OF THE TRANSHIPMENT AREA FOR THE PROVISIONAL AIRPORT AUTHORITY AFTER THE DEMOLITION WORK IS COMPLETED.

THE DEADLINES FOR SUBMISSION OF TENDERS FOR THE CONTRACTS ARE JULY 31 AND 17 RESPECTIVELY.

- - - - 0 - - - -

TRIPARTITE EFFORTS TO BOOST CHILD CARE SERVICES

* * * * *

THE CONTINUED DEVELOPMENT OF STRONG AND HEALTHY CHILD-CARE SERVICES IN HONG KONG IS A MATTER NOT ONLY FOR THE GOVERNMENT BUT ALSO FOR THE COMMUNITY AT LARGE AND THE NON-GOVERNMENTAL WELFARE AGENCIES, THE DIRECTOR OF SOCIAL WELFARE, MR M. D. CARTLAND, SAID TODAY (FRIDAY).

ADDRESSING THE OPENING OF THE SALVATION ARMY'S TSUEN WAN DAY NURSERY, HE SAID AT PRESENT THERE WERE MORE THAN 32,600 REGISTERED CHILD-CARE PLACES AVAILABLE FOR CHILDREN AGED BELOW SIX IN DAY NURSERIES, AND A FURTHER 1,100 PLACES FOR CHILDREN IN DAY CRECHES.

"IT IS THE INTENTION TO CONTINUE THE CURRENT EXPANSION OF THE PROVISION OF AIDED NURSERIES BY ADDING 1,400 NEW PLACES PER ANNUM UNTIL THE DEMAND IS FULL MET," HE ADDED.

AS FOR CHILDREN AGED BELOW TWO, MR CARTLAND POINTED OUT THAT DAY CRECHE PLACES WERE PROVIDED BY BOTH NON-GOVERNMENTAL ORGANISATIONS AND PRIVATE ESTABLISHMENTS.

"THE PROVISION OF DAY CRECHES WILL BE EXPANDED BY PHASES, PARTICULARLY IN THE NEW TOWNS, AND IT IS THE INTENTION TO TREBLE THE NUMBER OF PLACES CURRENTLY AVAILABLE BY THE END OF THE DECADE," HE SAID.

TO IMPROVE THE SERVICE AND CATER FOR CHANGING NEEDS, NEW APPROACHES IN OPERATING CHILD-CARE CENTRES, INCLUDING FLEXIBLE OPENING HOURS, OCCASIONAL CHILD-CARE SERVICES AND THE ESTABLISHMENT OF WORK-BASED CHILD-CARE FACILITIES, WERE BEING DEVELOPED AND IMPLEMENTED TO SUIT THE REQUIREMENTS OF WORKING PARENTS, MR CARTLAND SAID.

- - - - 0 - - - -

FRIDAY, JUNE 26, 1992

- 27 -

NEW TB CASES ON DECLINE

* * * * *

THE NUMBER OF NEW TUBERCULOSIS (TB) CASES IN HONG KONG CONTINUES TO DROP OVER THE PAST YEAR, THE DIRECTOR OF HEALTH, DR S.H. LEE, SAID TODAY (FRIDAY).

SPEAKING IN HIS CAPACITY AS PRESIDENT OF THE HONG KONG TUBERCULOSIS, CHEST AND HEART DISEASES ASSOCIATION AT ITS ANNUAL GENERAL MEETING, HE SAID THERE WAS A TOTAL OF 6,283 NEW TB CASES LAST YEAR WITH A NOTIFICATION RATE OF 109.2 PER 100,000 POPULATION, COMPARED WITH 6,510 CASES AND A NOTIFICATION RATE OF 114.1 IN 1990.

DR LEE SAID A TOTAL OF 409 TB DEATHS WERE REPORTED LAST YEAR, GIVING A RATE OF 7.1 PER 100,000 POPULATION.

TB MORTALITY VARIED SLIGHTLY BUT NOT SIGNIFICANTLY WHEN COMPARED WITH 382 DEATHS AND A RATE OF 6.7 PER 100,000 POPULATION IN 1990.

DURING THE PAST YEAR, DR LEE SAID 281 VIETNAMESE MIGRANTS WERE FOUND TO HAVE ACTIVE TB AND TREATED.

AS THE INFLUX OF VIETNAMESE MIGRANTS APPEARED TO HAVE STOPPED, DR LEE HOPED THAT THE IMPACT ON THE TB SITUATION BY THEM WOULD SOON BE GONE.

"CONSIDERABLE ACHIEVEMENTS HAVE BEEN MADE IN OUR FIGHT AGAINST TB, BUT OUR EFFORTS MUST CONTINUE IF WE ARE TO BRING THE TB SITUATION IN HONG KONG TO A STAGE OF NEAR ERADICATION," HE ADDED.

"THE IMPACT OF HIV INFECTION ON TB CONTROL PROGRAMME IN MANY COUNTRIES AND THE RISING NUMBER OF TB CASES AMONG THE DUALY (HIV/TB) INFECTED PERSONS IN THE UNITED STATES, AFRICA AND SOME ASIAN COUNTRIES RECEIVE INCREASING ATTENTION," DR LEE SAID.

"FORTUNATELY, HONG KONG HAS NOT BEEN FACING SUCH A SERIOUS PROBLEM."

HE SAID TWO SURVEYS HAD BEEN CONDUCTED ON 485 TB IN-PATIENTS AND 905 TB OUT-PATIENTS LAST YEAR WITH NO POSITIVE CASES DETECTED.

"HOWEVER, ALL PREVENTIVE AND CONTROL MEASURES CERTAINLY HAVE TO BE MAINTAINED, AND IF NECESSARY, REINFORCED," HE SAID.

ON LUNG CANCER DEATHS, DR LEE SAID THE FIGURE DROPPED SLIGHTLY FROM 2,638 IN 1990 TO 2,597 LAST YEAR.

"THIS UP AND DOWN TREND IS LIKELY TO OCCUR FOR A WHILE BEFORE THE FIGHT AGAINST CIGARETTE SMOKING BECOMES MORE SUCCESSFUL," HE ADDED.

TURNING TO OCCUPATIONAL LUNG DISEASES, DR LEE SAID 118 CASES OF SILICOSIS AND ONE CASE OF ASBESTOSIS WERE ASSESSED, REPORTED AND COMPENSATED.

/SO FAR,

- 28 -

SO FAR, A TOTAL OF 3,640 PNEUMOCONIOSIS CASES HAVE BEEN COMPENSATED.

ON HEART DISEASES, DR LEE SAID, IT CLAIMED A TOTAL OF 4,858 LIVES LAST YEAR, 118 LESS THAN IN 1990.

DR LEE EXPRESSED HIS APPRECIATION FOR THE GOOD WORK DONE BY THE CARDIAC MEDICAL AND SURGICAL TEAMS AT GRANTHAM HOSPITAL.

LAST YEAR, A TOTAL OF 1,017 CARDIAC OPERATIONS WERE PERFORMED IN THE HOSPITAL WITH A HIGH SUCCESS RATE.

- - - - 0 - - - -

BANKING LICENCE REVOKED

* * * * *

A GOVERNMENT SPOKESMAN SAID TODAY (FRIDAY) THAT THE BANKING LICENCE OF MANUFACTURERS HANOVER TRUST COMPANY (MHT) HAS BEEN REVOKED AT THE REQUEST OF THE BANK.

MHT MERGED WITH CHEMICAL BANK ON JUNE 20, 1992 CONSEQUENT UPON THE MERGER BETWEEN THEIR RESPECTIVE HOLDING COMPANIES, MANUFACTURERS HANOVER CORPORATION AND CHEMICAL BANKING CORPORATION, IN THE UNITED STATES.

AFTER THE REVOCATION, THERE ARE 161 LICENSED BANKS IN HONG KONG, OF WHICH 131 ARE INCORPORATED OUTSIDE HONG KONG.

- - - - 0 - - - -

HONG KONG GOVERNMENT EXCHANGE FUND
MONEY MARKET OPERATIONS

* * * * *

	\$ MILLION

OPENING BALANCE IN THE ACCOUNT	1,588
REVERSAL OF LAF	-600
BALANCE AFTER REVERSAL OF LAF	988
NET INJECTION/WITHDRAWAL TODAY	NIL
EFFECT OF LAF TODAY	+700
CLOSING BALANCE IN THE ACCOUNT	1,688

LAF RATE 2.50 BID/4.50 OFFER TWI 110.4 *-0.2* 26.6.92

/HONG KONG

FRIDAY, JUNE 26, 1992

- 29 -

HONG KONG GOVERNMENT EXCHANGE FUND

EF BILLS		HONG KONG GOVERNMENT BONDS				
TERMS	YIELD	TERM	ISSUE	COUPON	PRICE	YIELD
1 WEEK	2.79 PCT	17 MONTHS	2311	6.25	102.53	4.40
1 MONTH	2.79 PCT	20 MONTHS	2402	5.50	101.21	4.77
3 MONTHS	2.81 PCT	23 MONTHS	2405	5.50	100.94	5.03
6 MONTHS	3.18 PCT					
12 MONTHS	3.90 PCT					

TOTAL TURNOVER OF BILLS AND BONDS - 3,280 MN

CLOSED 26 JUNE 1992

- - - - 0 - - - -